

Introduction to Hazards on the Homefront



Produced by



as part of the **Local Hazardous Waste Management Program** in King County

What is household hazardous waste?



- Any waste or combination of wastes which may cause
- irreversible illness.
 - an increase in mortality.
 - a threat to human health or the environment.

It is waste generated by individuals rather than by businesses or institutions.

Why is household hazardous waste a concern?

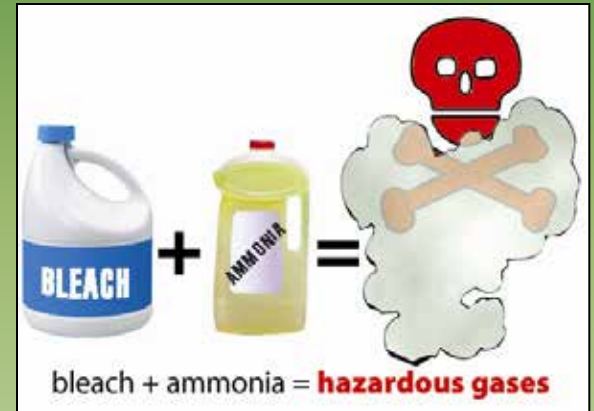
- Harmful to health, especially children's health.
- Hazardous to pets, fish, birds, beneficial insects, and other wildlife.
- Causes long-term negative effects on our environment.
- Can be carried by rainwater into our local waterways. Even low levels can be harmful.
- Most chemicals from household products and medicines can't be removed in water treatment process.



Stand up if

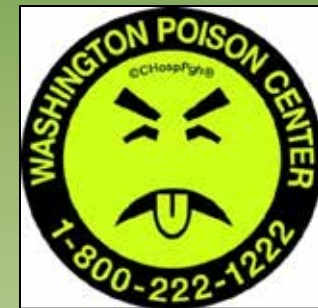
- You read or look at a label on a product before you buy it or use it.
- You've ever used rechargeable batteries.
- You know which products in your house are flammable.
- You know how using pesticides or herbicides on a lawn can affect salmon and other fish.
- You know the difference between a storm drain and a sewer.
- You know a safer alternative to a hazardous product.
- You have stood up more than twice.

The four hazards

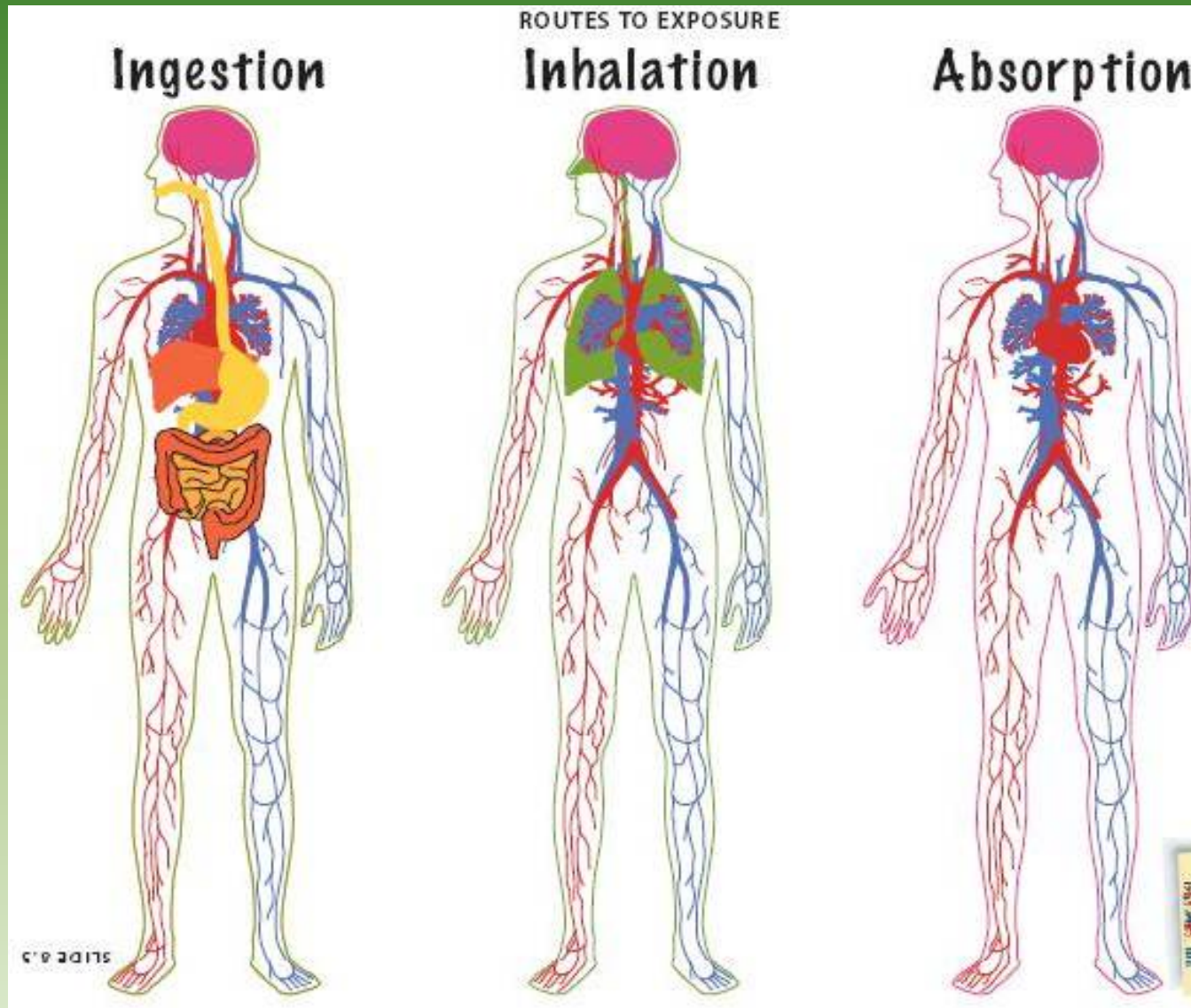


Toxic or poisonous

Capable of causing injury or death if swallowed, breathed in, or absorbed through the skin.



Routes to exposure



Flammable or combustible

Can catch fire at relatively low temperatures.



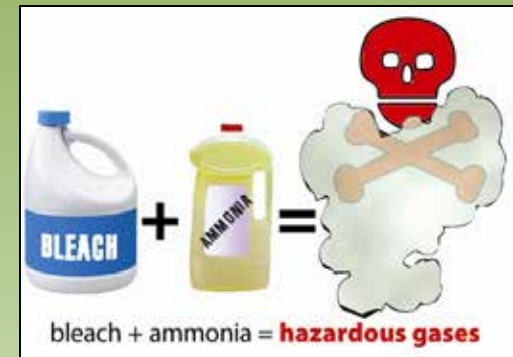
Corrosive

Can eat away materials and burn living tissue by chemical action.



Reactive

Can react with air, water or other substances and result in fire, explosions, or toxic gases.



Hazardous products in our homes

The average household has 60 hazardous product containers.

Sometimes they are not stored or disposed of properly.



**What are these products?
What's missing?**



Dangerous look-alikes





Hazardous and non-hazardous products can look alike. Labels and proper storage can prevent accidents.

What do you notice about these products?



What's required on a label?

<p>Usage: Intended for use as a Topical Anti-infective and Rubefacient for massage use and the treatment of minor cuts and abrasions.</p> <p>Directions: apply to affected area for first-aid treatment of minor cuts and abrasions. In case of deep or puncture wounds consult a physician. Discontinue use and get medical aid if redness, irritation or infection develops. Apply liberally for rubbing.</p>	 <p>Isopropyl Alcohol, 70% v/v</p> <p>For External Use Only. Ingestion will result in severe gastrointestinal disturbance, unconsciousness and death</p> <p>Lot #: Expiration:</p> <p>Medical Chemical Corp., Torrance CA</p>	<p>Active ingredient: Isopropyl alcohol, 70%</p> <p>Also contains: water</p> <p>Warning: Avoid contact with eyes or mucous membranes. Keep out of reach of children. In case of ingestion contact a poison control center immediately.</p> <p>Flammable: Avoid sources of ignition. Do not use around open flames.</p> <p>Catalog # 105B NDC 012745-105B</p> 
---	--	--

DANGER: CORROSIVE.

FIRST AID: IF IN EYES: Hold eye open and rinse slowly and gently with water for 15-20 minutes. Remove contact lenses, if present, after the first 5 minutes, then continue rinsing eye. **IF ON SKIN OR CLOTHING:** Take off contaminated clothing. Rinse skin immediately with plenty of water for 15-20 minutes. **IN EITHER CASE, CALL A POISON CONTROL CENTER OR DOCTOR IMMEDIATELY FOR**

<p>300 TILE CLEANER INSTRUCTIONS & WARNINGS KEEP OUT OF REACH OF CHILDREN CAUTION - CORROSIVE</p> <p>Apply to the surface of the tile and scrub with a stiff brush. Rinse thoroughly with water. Do not use on other surfaces. Do not use on other tiles.</p>	 <p>300 Swimming Pool TILE CLEANER CONCENTRATED THICKER FORMULA Removes Calcium Deposits, Dissolves Oil, Grease and Mold Spots. Fast Acting!</p> <p>CAUTION KEEP OUT OF REACH OF CHILDREN MAY BE FATAL IF SWALLOWED CAN CAUSE SEVERE BURNS TO EYES AND SKIN See and Read Important Safety Precautions and First Aid On Side Panel. BIO-DEX LABORATORIES Piscataway, New Jersey</p>	<p>300 TILE CLEANER INSTRUCTIONS & WARNINGS KEEP OUT OF REACH OF CHILDREN CAUTION - CORROSIVE</p> <p>Apply to the surface of the tile and scrub with a stiff brush. Rinse thoroughly with water. Do not use on other surfaces. Do not use on other tiles.</p>
---	---	---



Look at some hazardous product labels. Make a list of the information you find.

Signal words



Highest hazard	DANGER, POISON
Less hazardous	CAUTION, WARNING
Safer	You don't see: DANGER, POISON CAUTION or WARNING

Danger or Poison – The product is highly toxic, poisonous, corrosive, flammable, or reactive.

Caution or Warning – The product is slightly or moderately toxic, flammable, irritating, or reactive.

No signal word – The product is not indicated as hazardous.

Label reading game

Object of the game is to correctly identify the

- **type of product**
- **signal word(s)**
- **principal hazard(s)**

of the product label taped on your back.

Label game rules

- Circulate around the room, asking *yes* or *no* questions of your fellow students.
 - Ask only two questions of each person.
 - When you figure out what your product is, return to your seat.
- ★ Bonus - Can you identify a safer alternative to your product?

Product label information

STUDENT HANDOUT

Household Product Labels Data Sheet

Name _____

Name of household product	Signal words	Principal hazards	Precautionary statements	First-aid information	Ingredients	Customer toll-free number	Directions for use	Storage & disposal

SC11CUB-41HW-2-R-9/91 rev. 4/09/12 • ECY Publication 09-04-004

