

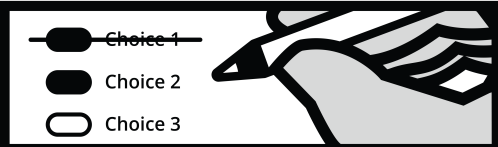
Instructions

How to vote



Completely fill in the oval next to your choice.

How to correct a mistake



To make a correction, draw a line through the entire choice. You then have the option of making a different choice by completely filling in another oval.

Begin voting here



City

**City of Seattle
Initiative Measure No. 135**

City of Seattle Initiative Measure 135 concerns developing and maintaining affordable social housing in Seattle.

This measure would create a public development authority (PDA) to develop, own, and maintain publicly financed mixed-income social housing developments. The City would provide start-up support for the PDA. The City Council would determine the amount of ongoing City support. Before it transfers any public lands for nonpublic use, the City would be required to consider a transfer to the PDA. The PDA's Charter would govern the election, composition, and duties of the PDA's Board of Directors.

Should this measure be approved?

- Yes**
- No**

End of Ballot

Sample

Sample