

2020 STI Surveillance Data and COVID-19

STI case numbers in 2020 may be affected by the COVID-19 pandemic. The first stay at home orders for King County were issued near the end of quarter 1 and any observed decreases in STIs may be from changes in STI screening and/or changes in sexual behavior during the pandemic.

STI Case Counts

	2019		2020	
	2019Q1	YTD	2020Q1	YTD
Gonorrhea (GC)*	1092	1092	1141	1141
GC: MSM	570	570	508	508
Urethral GC	152	152	137	137
Rectal GC	273	273	229	229
Pharyngeal GC	108	108	53	53
GC: Women^	260	260	278	278
GC: MSW^	166	166	165	165
GC: Transgender‡	5	5	9	9
Chlamydia (CT)*	2578	2578	2246	2246
CT: Men	1316	1316	1100	1100
CT: Women	1252	1252	1136	1136
CT: Transgender‡	7	7	1	1
Total Syphilis (all stages)*	275	275	228	228
Primary and secondary	93	93	80	80
Early latent	104	104	95	95
Late + unk duration	78	78	53	53
Early syphilis: MSM	167	167	136	136
Early syphilis: Women	5	5	8	8
Early syphilis: MSW	12	12	11	11
Early syphilis: Transgender	4	4	3	3
Congenital syphilis	0	0	0	0

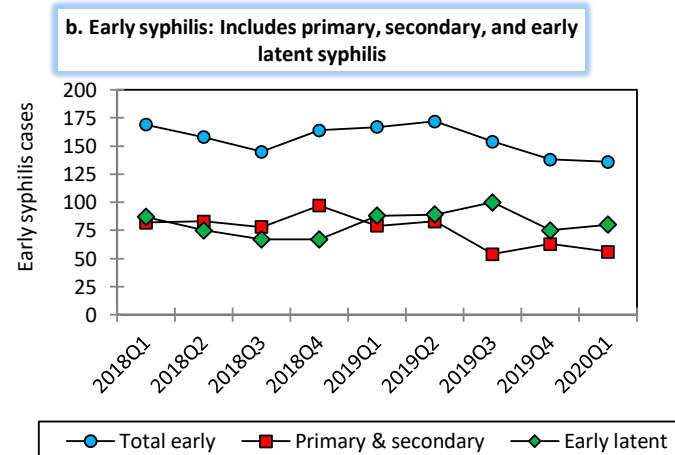
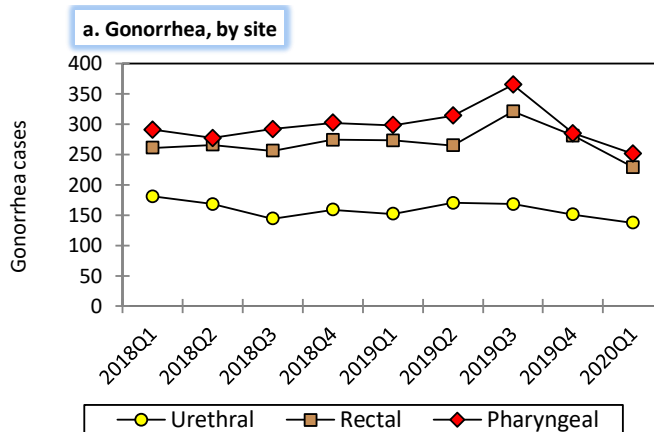
*Column may not equal total due to missing gender or sexual preference data.
^ Genital tract infection
‡ Transgender identity relies on reporting from medical providers and Partner Services Interviews. Data presented here are a potential undercount.

	2018		2019	
	2018Q4	YTD	2019Q4	YTD
Total†	76	297	69	260
MSM	42	154	41	158
Women	18	82	15	55
MSW	3	11	2	8
Transgender‡	0	1	0	4

* Data shown for prior quarter due to reporting delay.
† Column may not equal total due to missing sexual preference data.
‡ Transgender identity relies on review of information documented in medical records and obtained through Partner Services Interviews. Data presented here are a potential undercount.

Trends in STI Morbidity

Figure 2: Quarterly King County STI morbidity among MSM**



**Footnote: Chlamydia case data on gender of sex partners and anatomic site of infection are incomplete for these time periods. For this reason chlamydia cases are not shown for MSM or MSW.

Trends in STI Morbidity

Figure 1: Quarterly King County STI morbidity, women and MSW

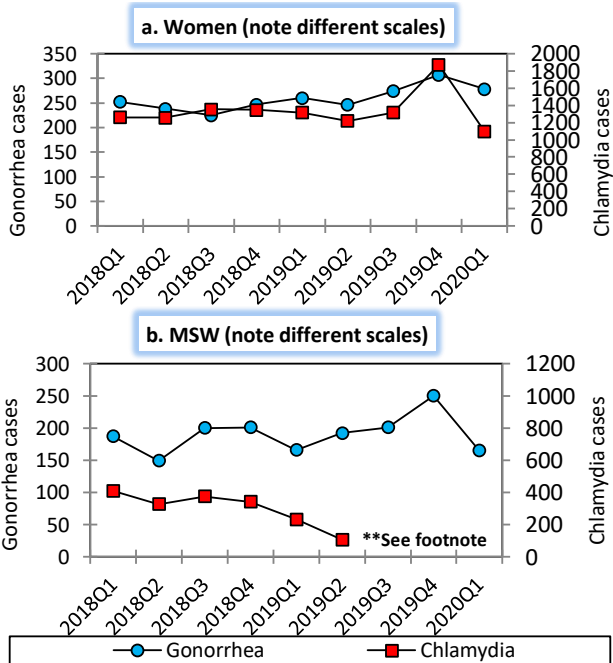
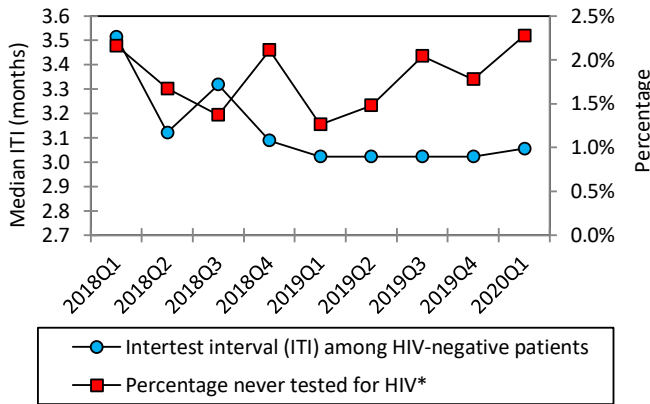


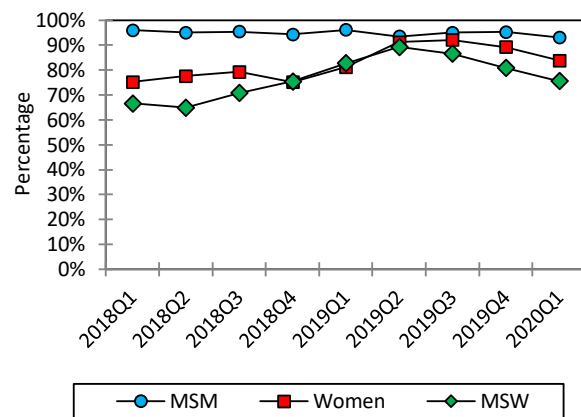
Figure 3: HIV testing among PHSKC Sexual Health Clinic patients, MSM (note different scales)



* Denominator includes patients who reported never testing or negative/unknown results

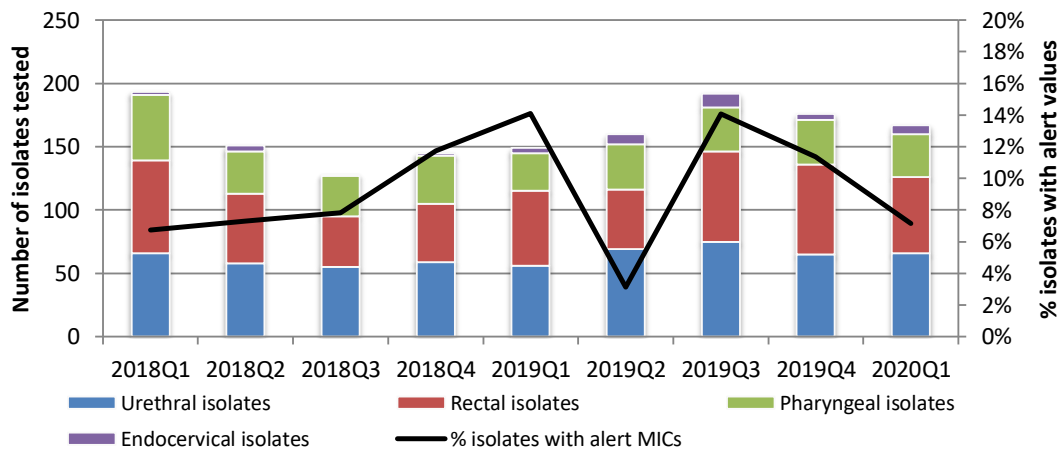
HIV testing should be performed annually on low-risk MSM and quarterly on high-risk MSM^a.

Figure 4: Percentage of King County residents with a bacterial STI tested for HIV (excludes HIV+ residents)



Anyone diagnosed with a bacterial STI should be tested for HIV.

Figure 5: Percentage of SURRG^b isolates with alert values for cephalosporins or azithromycin (note scales)



Alert value = Minimum Inhibitory Concentration (MIC, lowest antibiotic concentration needed to halt bacterial growth) is higher than preset thresholds^c. Alert value MICs represent decreased susceptibility to an antibiotic but may not represent resistance.

Footnotes and Abbreviations:

MSM = Men who have sex with men
 MSW = Men who have sex with women
^aHigh-risk = MSM with any one of the following in the prior year: diagnosis of a bacterial STI, methamphetamine or popper use, ≥10 sex partners (anal or oral), or unprotected anal sex with a partner of unknown or discordant HIV status
 Low-risk = sexually active MSM who do not meet high-risk criteria
^bSURRG = Strengthening the U.S. Response to Resistant Gonorrhea Surveillance, supported by the Centers for Disease Control and Prevention
^cAlert values:
 Ceftriaxone MIC ≥ 0.125 µg/ml
 Cefixime MIC ≥ 0.25 µg/ml
 Azithromycin MIC ≥ 2.0 µg/ml

Table 3: SURRG isolates with alert values for cephalosporins (ceph) or azithromycin (azi)

	2020Q1		YTD	
Unique cases tested*	134		134	
MSM	100		100	
MSW	25		25	
Women	7		7	
Transgender	1		1	
Alert cases and % of cases with alert MICs	Azi	Ceph	Azi	Ceph
	N (%)	N (%)	N (%)	N (%)
Unique alert cases*	7 (5)	1 (1)	7 (5)	1 (1)
MSM	5 (5)	1 (1)	5 (5)	1 (1)
MSW	1 (4)	0 (0)	1 (4)	0 (0)
Women	1 (14)	0 (0)	1 (14)	0 (0)
Transgender	0 (0)	0 (0)	0 (0)	0 (0)

* Column may not equal total due to missing sexual preference data