

2020 STI Surveillance Data and COVID-19

STI case numbers in 2020 may be affected by the COVID-19 pandemic. The first stay at home orders for King County were issued near the end of quarter 1 and any observed decreases in STIs maybe be from changes in STI screening and/or changes in sexual behavior during the pandemic.

STI Case Counts

	2020		2021	
	2020Q2	YTD	2021Q2	YTD
Gonorrhea (GC)*	831	1971	919	1916
GC: MSM	219	727	406	803
Urethral GC	62	199	109	209
Rectal GC	108	337	197	421
Pharyngeal GC	88	339	200	373
GC: Women^	262	540	250	529
GC: MSW^	154	335	151	325
GC: Transgender‡	9	18	28	49
Chlamydia (CT)*	1854	4460	1843	3902
CT: Men	856	2160	866	1796
CT: Women	988	2278	969	2080
CT: Transgender‡	6	7	6	14
Total Syphilis (all stages)*	183	411	305	612
Primary and secondary	77	156	143	269
Early latent	71	166	94	190
Late + unk duration	35	89	67	151
Early syphilis: MSM	102	238	152	291
Early syphilis: Women	9	16	27	59
Early syphilis: MSW	12	22	39	61
Early syphilis: Transgender‡	8	12	3	5
Congenital syphilis	0	0	0	1

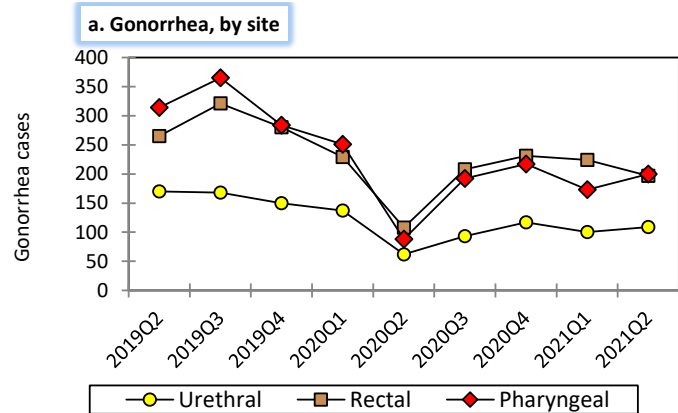
*Column may not equal total due to missing gender or sexual preference data.
^ Genital tract infection
‡ Transgender identity relies on reporting from medical providers and Partner Services Interviews. Data presented here are a potential undercount.

	2020		2021	
	2020Q1	YTD	2021Q1	YTD
Total†	50	50	45	45
MSM	34	34	30	30
Women	10	10	6	6
MSW	2	2	2	2
Transgender‡	1	1	2	2

* Data shown for prior quarter due to reporting delay.
† Column may not equal total due to missing sexual preference data.
‡ Transgender identity relies on review of information documented in medical records and obtained through Partner Services Interviews. Data presented here are a potential undercount.

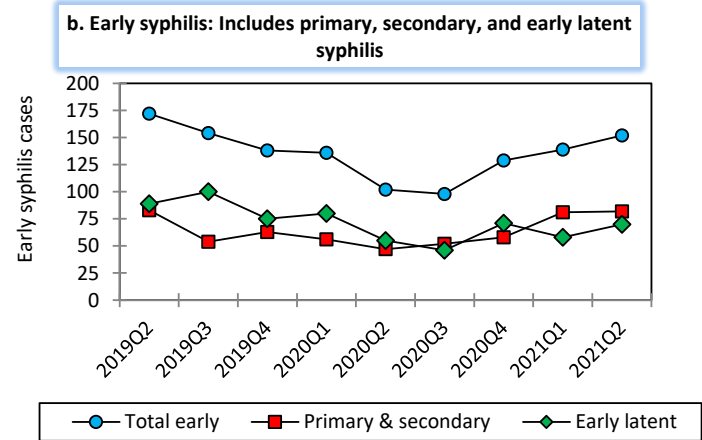
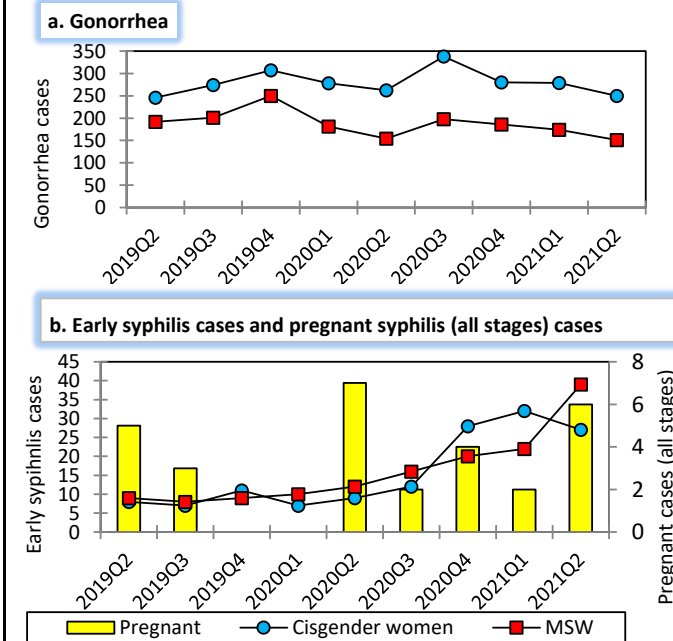
Trends in STI Morbidity

Figure 2: Quarterly King County STI morbidity among MSM**



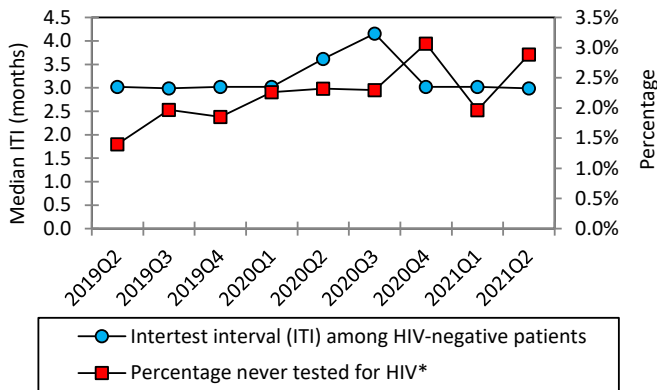
Trends in STI Morbidity

Figure 1: Quarterly King County STI morbidity, women and MSW**



**Footnote: Chlamydia case data on gender of sex partners and anatomic site of infection are incomplete for these time periods. For this reason chlamydia cases are not shown by population.

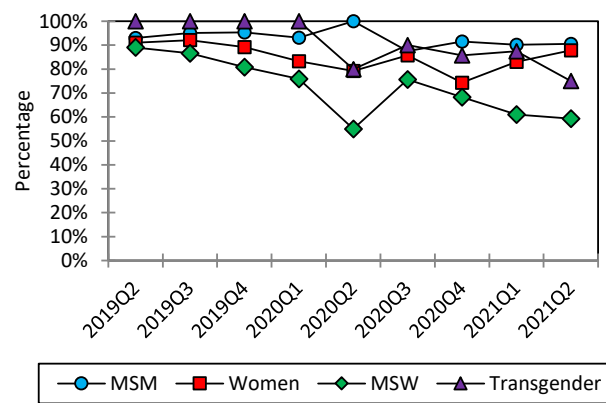
Figure 3: HIV testing among PHSKC Sexual Health Clinic patients, MSM (note different scales)



* Denominator includes patients who reported never testing or negative/unknown results

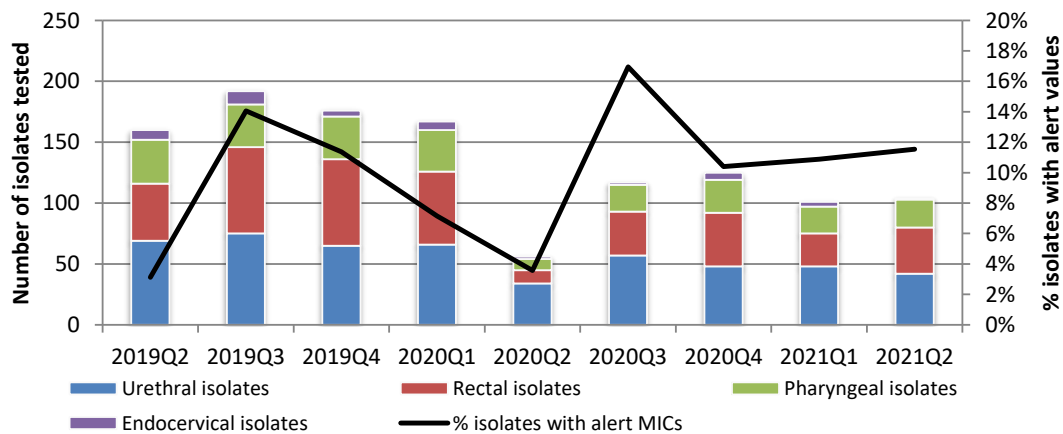
HIV testing should be performed annually on low-risk MSM and quarterly on high-risk MSM^a.

Figure 4: Percentage of King County residents with a bacterial STI tested for HIV (excludes HIV+ residents)



Anyone diagnosed with a bacterial STI should be tested for HIV.

Figure 5: Percentage of SURRG^b isolates with alert values for cephalosporins or azithromycin (note scales)



Alert value = Minimum Inhibitory Concentration (MIC, lowest antibiotic concentration needed to halt bacterial growth) is higher than preset thresholds^c. Alert value MICs represent decreased susceptibility to an antibiotic but may not represent resistance.

Footnotes and Abbreviations:

MSM = cisgender men who have sex with men
 MSW = cisgender men who have sex with women
^aHigh-risk = MSM with any one of the following in the prior year: diagnosis of a bacterial STI, methamphetamine or popper use, ≥10 sex partners (anal or oral), or unprotected anal sex with a partner of unknown or discordant HIV status
 Low-risk = sexually active MSM who do not meet high-risk criteria
^bSURRG = Strengthening the U.S. Response to Resistant Gonorrhea Surveillance, supported by the Centers for Disease Control and Prevention
^cAlert values:
 Ceftriaxone MIC ≥ 0.125 µg/ml Cefixime MIC ≥ 0.25 µg/ml
 Azithromycin MIC ≥ 2.0 µg/ml

Table 3: SURRG isolates with alert values for cephalosporins (ceph) or azithromycin (azi)

	2021Q2		YTD	
Unique cases tested*	80		158	
MSM	63		118	
MSW	13		31	
Cisgender Women	2		6	
Transgender	2		3	
Alert cases and % of cases with alert MICs	Azi	Ceph	Azi	Ceph
	N (%)	N (%)	N (%)	N (%)
Unique alert cases*	9 (11)	0 (0)	17 (11)	0 (0)
MSM	8 (13)	0 (0)	15 (13)	0 (0)
MSW	1 (8)	0 (0)	2 (6)	0 (0)
Cisgender Women	0 (0)	0 (0)	0 (0)	0 (0)
Transgender	0 (0)	0 (0)	0 (0)	0 (0)

* Column may not equal total due to missing sexual preference data