

2020 STI Surveillance Data and COVID-19

STI case numbers in 2020 may be affected by the COVID-19 pandemic. The first stay at home orders for King County were issued near the end of quarter 1 and any observed decreases in STIs maybe be from changes in STI screening and/or changes in sexual behavior during the pandemic.

STI Case Counts

	2020		2021	
	2020Q3	YTD	2021Q3	YTD
Gonorrhea (GC)*	1221	3192	1138	3054
GC: MSM	393	1120	533	1336
Urethral GC	93	292	135	344
Rectal GC	208	545	253	674
Pharyngeal GC	192	531	266	639
GC: Women^	338	878	277	806
GC: MSW^	198	533	211	536
GC: Transgender‡	9	27	28	77
Chlamydia (CT)*	2454	6914	1992	5894
CT: Men	1146	3306	951	2747
CT: Women	1295	3573	1029	3109
CT: Transgender‡	9	16	10	24
Total Syphilis (all stages)*	198	609	361	973
Primary and secondary	79	235	180	449
Early latent	74	240	97	287
Late + unk duration	44	133	79	230
Early syphilis: MSM	98	336	168	459
Early syphilis: Women	12	28	30	89
Early syphilis: MSW	16	38	55	116
Early syphilis: Transgender‡	6	18	9	14
Congenital syphilis	1	1	5	6

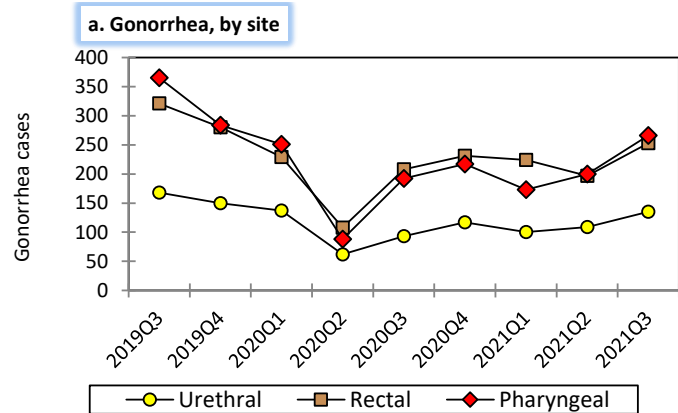
*Column may not equal total due to missing gender or sexual preference data.
^ Genital tract infection
‡ Transgender identity relies on reporting from medical providers and Partner Services Interviews. Data presented here are a potential undercount.

	2020		2021	
	2020Q2	YTD	2021Q2	YTD
Total†	48	98	53	98
MSM	33	67	35	64
Women	9	19	5	11
MSW	1	3	2	4
Transgender‡	1	2	5	8

* Data shown for prior quarter due to reporting delay.
† Column may not equal total due to missing sexual preference data.
‡ Transgender identity relies on review of information documented in medical records and obtained through Partner Services Interviews. Data presented here are a potential undercount.

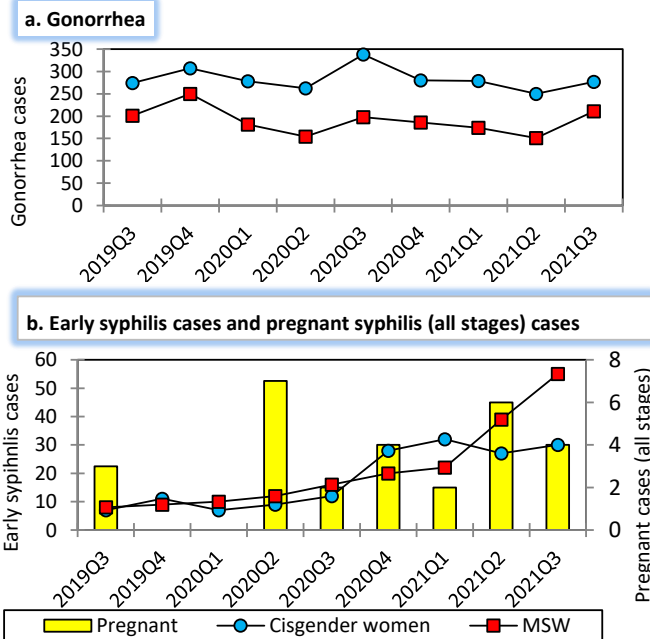
Trends in STI Morbidity

Figure 2: Quarterly King County STI morbidity among MSM**

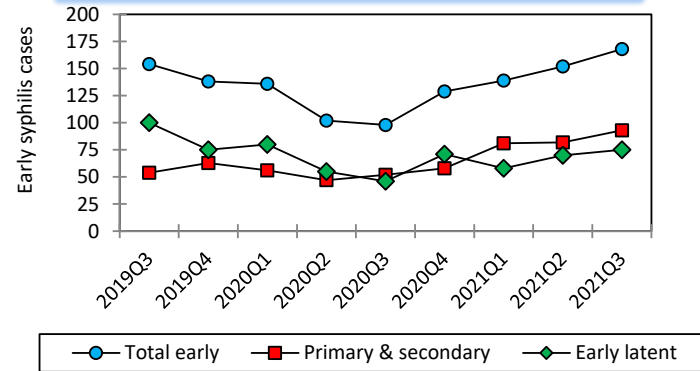


Trends in STI Morbidity

Figure 1: Quarterly King County STI morbidity, women and MSW**

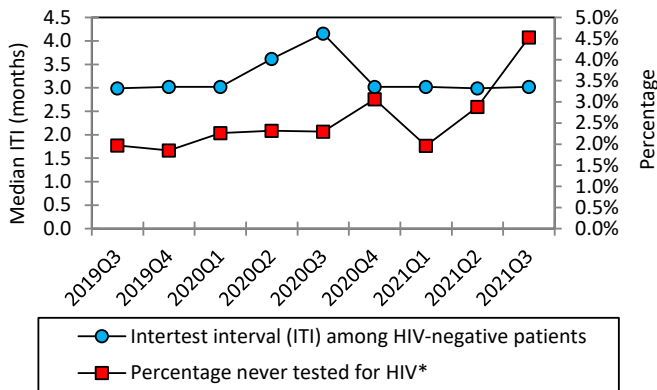


b. Early syphilis: Includes primary, secondary, and early latent syphilis



**Footnote: Chlamydia case data on gender of sex partners and anatomic site of infection are incomplete for these time periods. For this reason chlamydia cases are not shown by population.

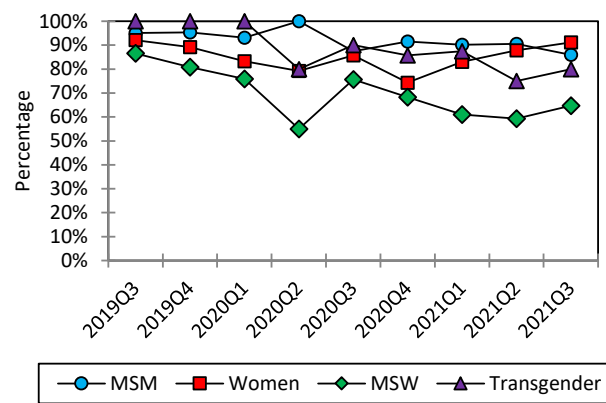
Figure 3: HIV testing among PHSKC Sexual Health Clinic patients, MSM (note different scales)



* Denominator includes patients who reported never testing or negative/unknown results

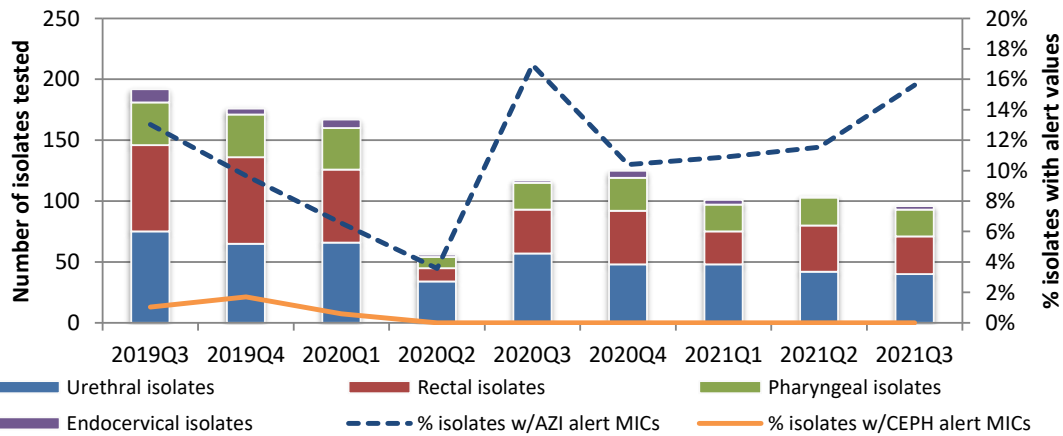
HIV testing should be performed annually on low-risk MSM and quarterly on high-risk MSM^a.

Figure 4: Percentage of King County residents with a bacterial STI tested for HIV (excludes HIV+ residents)



Anyone diagnosed with a bacterial STI should be tested for HIV.

Figure 5: Percentage of SURRG^b isolates with alert values for cephalosporins (CEPH) or azithromycin (AZI) (note scales)



Alert value = Minimum Inhibitory Concentration (MIC, lowest antibiotic concentration needed to halt bacterial growth) is higher than preset thresholds^c. Alert value MICs represent decreased susceptibility to an antibiotic but may not represent resistance.

Footnotes and Abbreviations:

MSM = cisgender men who have sex with men
 MSW = cisgender men who have sex with women
^aHigh-risk = MSM with any one of the following in the prior year: diagnosis of a bacterial STI, methamphetamine or popper use, ≥10 sex partners (anal or oral), or unprotected anal sex with a partner of unknown or discordant HIV status
 Low-risk = sexually active MSM who do not meet high-risk criteria
^bSURRG = Strengthening the U.S. Response to Resistant Gonorrhea Surveillance, supported by the Centers for Disease Control and Prevention
^cAlert values:
 Ceftriaxone MIC ≥ 0.125 µg/ml Cefixime MIC ≥ 0.25 µg/ml
 Azithromycin MIC ≥ 2.0 µg/ml

Table 3: SURRG isolates with alert values for cephalosporins (ceph) or azithromycin (azi)

	2021Q3		YTD	
Unique cases tested*	89		263	
MSM	68		195	
MSW	17		55	
Cisgender Women	4		10	
Transgender	0		3	
Alert cases and % of cases with alert MICs	Azi N (%)	Ceph N (%)	Azi N (%)	Ceph N (%)
Unique alert cases*	14 (16)	0 (0)	33 (13)	0 (0)
MSM	13 (19)	0 (0)	31 (16)	0 (0)
MSW	1 (6)	0 (0)	2 (4)	0 (0)
Cisgender Women	0 (0)	0 (0)	0 (0)	0 (0)
Transgender	0 (-)	0 (-)	0 (0)	0 (0)

* Column may not equal total due to missing sexual preference data