

2020 STI Surveillance Data and COVID-19

STI case numbers in 2020 may be affected by the COVID-19 pandemic. The first stay at home orders for King County were issued near the end of quarter 1 and any observed decreases in STIs maybe be from changes in STI screening and/or changes in sexual behavior during the pandemic.

STI Case Counts

	2021		2022	
	2021Q3	YTD	2022Q3	YTD
Gonorrhea (GC)*	1128	3041	1126	3317
GC: MSM	528	1328	551	1715
Urethral GC	135	343	114	390
Rectal GC	250	670	234	805
Pharyngeal GC	265	637	327	992
GC: Women^	276	804	245	714
GC: MSW^	208	534	178	541
GC: Transgender‡	28	77	35	104
Chlamydia (CT)*	1996	5906	1991	5768
CT: Men	953	2752	952	2783
CT: Women	1031	3116	1028	2950
CT: Transgender‡	10	24	10	26
Total Syphilis (all stages)*	368	983	444	1273
Primary and secondary	180	448	177	508
Early latent	96	287	143	387
Late + unk duration	86	241	119	367
Early syphilis: MSM	164	454	172	496
Early syphilis: Women	33	91	52	141
Early syphilis: MSW	56	117	58	174
Early syphilis: Transgender‡	9	14	10	26
Congenital syphilis	6	7	4	10

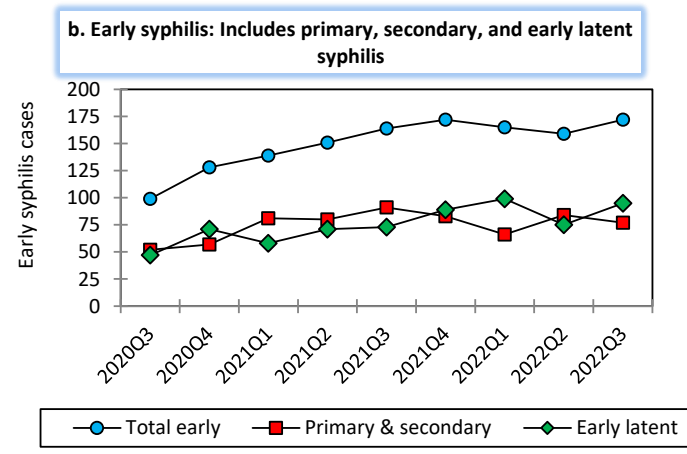
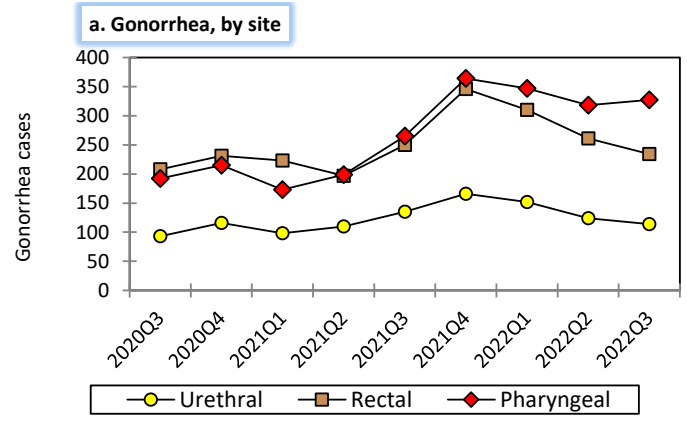
*Column may not equal total due to missing gender or sexual preference data.
^ Genital tract infection
‡ Transgender identity relies on reporting from medical providers and Partner Services Interviews. Data presented here are a potential undercount.

	2021		2022	
	2021Q2	YTD	2022Q2	YTD
Total†	41	80	68	100
MSM	32	57	40	62
Women	2	7	8	12
MSW	2	4	7	10
Transgender‡	3	6	2	3

* Data shown for prior quarter due to reporting delay.
† Column may not equal total due to missing sexual preference data.
‡ Transgender identity relies on review of information documented in medical records and obtained through Partner Services Interviews. Data presented here are a potential undercount.

Trends in STI Morbidity

Figure 2: Quarterly King County STI morbidity among MSM**



**Footnote: Chlamydia case data on gender of sex partners and anatomic site of infection are incomplete for these time periods. For this reason chlamydia cases are not shown by population.

Trends in STI Morbidity

Figure 1: Quarterly King County STI morbidity, women and MSW**

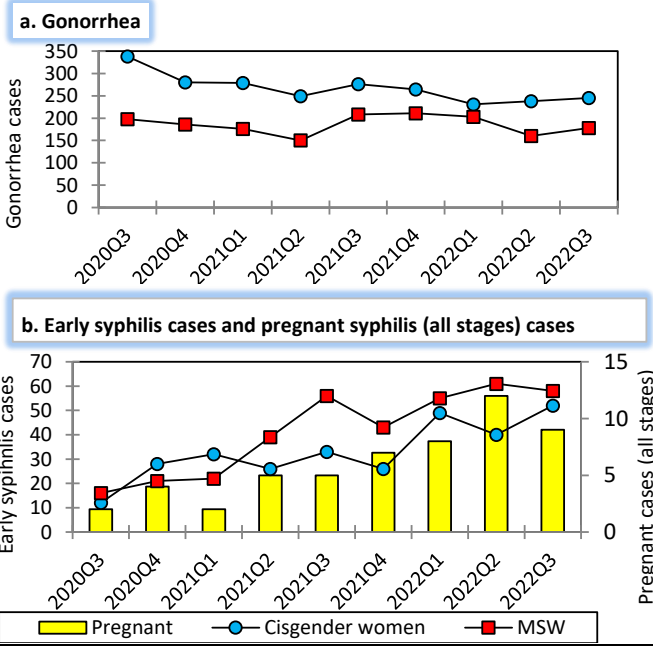
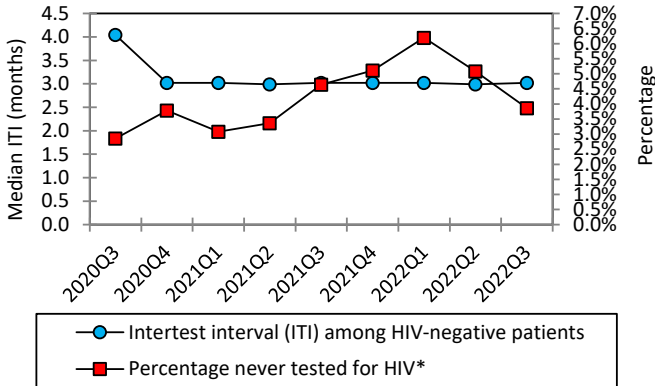


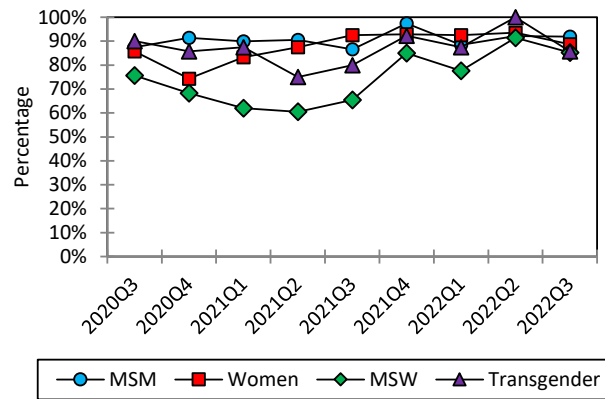
Figure 3: HIV testing among PHSKC Sexual Health Clinic patients, MSM (note different scales)



* Denominator includes patients who reported never testing or negative/unknown results

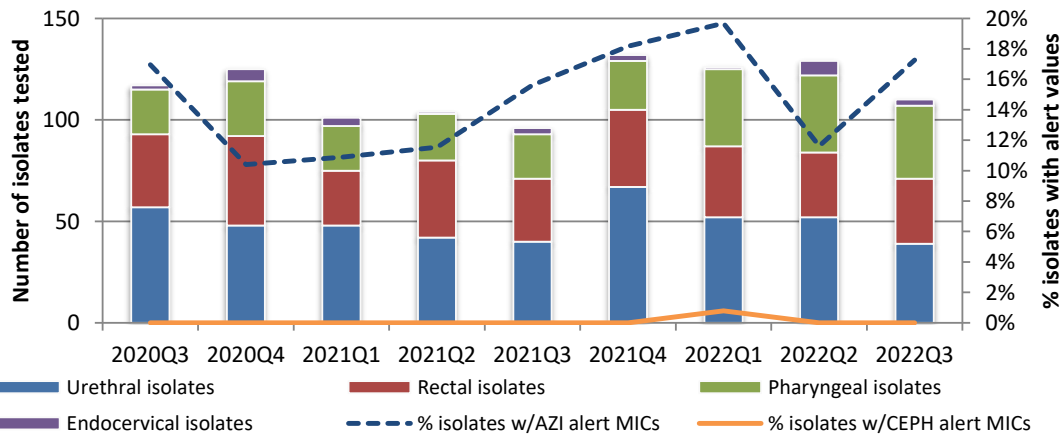
HIV testing should be performed annually on low-risk MSM and quarterly on high-risk MSM^a.

Figure 4: Percentage of King County residents with a bacterial STI tested for HIV (excludes HIV+ residents)



Anyone diagnosed with a bacterial STI should be tested for HIV.

Figure 5: Percentage of SURRG^b isolates with alert values for cephalosporins (CEPH) or azithromycin (AZI) (note scales)



Alert value = Minimum Inhibitory Concentration (MIC, lowest antibiotic concentration needed to halt bacterial growth) is higher than preset thresholds^c. Alert value MICs represent decreased susceptibility to an antibiotic but may not represent resistance.

Footnotes and Abbreviations:

MSM = cisgender men who have sex with men
 MSW = cisgender men who have sex with women
^aHigh-risk = MSM with any one of the following in the prior year: diagnosis of a bacterial STI, methamphetamine or popper use, ≥10 sex partners (anal or oral), or unprotected anal sex with a partner of unknown or discordant HIV status
 Low-risk = sexually active MSM who do not meet high-risk criteria
^bSURRG = Strengthening the U.S. Response to Resistant Gonorrhea Surveillance, supported by the Centers for Disease Control and Prevention
^cAlert values:
 Ceftriaxone MIC ≥ 0.125 µg/ml Cefixime MIC ≥ 0.25 µg/ml
 Azithromycin MIC ≥ 2.0 µg/ml

Table 3: SURRG isolates with alert values for cephalosporins (ceph) or azithromycin (azi)

	2022Q3		YTD	
Unique cases tested*	97		322	
MSM	74		247	
MSW	14		53	
Cisgender Women	5		15	
Transgender	4		7	
Alert cases and % of cases with alert MICs	Azi N (%)	Ceph N (%)	Azi N (%)	Ceph N (%)
Unique alert cases*	19 (20)	0 (0)	52 (16)	1 (0)
MSM	15 (20)	0 (0)	45 (18)	1 (0)
MSW	2 (14)	0 (0)	4 (8)	0 (0)
Cisgender Women	0 (0)	0 (0)	1 (7)	0 (0)
Transgender	2 (50)	0 (0)	2 (29)	0 (0)

* Column may not equal total due to missing sexual preference data