

2020 STI Surveillance Data and COVID-19

STI case numbers in 2020 may be affected by the COVID-19 pandemic. The first stay at home orders for King County were issued near the end of quarter 1 and any observed decreases in STIs maybe be from changes in STI screening and/or changes in sexual behavior during the pandemic.

STI Case Counts

	2020		2021	
	2020Q4	YTD	2021Q4	YTD
Gonorrhea (GC)*	1068	4260	1237	4278
GC: MSM	449	1569	677	2008
Urethral GC	117	409	167	512
Rectal GC	231	776	347	1017
Pharyngeal GC	217	748	365	1003
GC: Women^	280	1158	264	1068
GC: MSW^	186	719	209	740
GC: Transgender‡	24	51	43	120
Chlamydia (CT)*	2022	8245	1774	7673
CT: Men	921	3838	855	3565
CT: Women	1089	4363	912	4063
CT: Transgender‡	10	26	7	31
Total Syphilis (all stages)*	257	866	363	1346
Primary and secondary	101	336	155	603
Early latent	92	332	113	400
Late + unk duration	63	196	91	332
Early syphilis: MSM	129	465	169	626
Early syphilis: Women	28	56	26	117
Early syphilis: MSW	20	58	41	157
Early syphilis: Transgender‡	3	21	15	29
Congenital syphilis	0	1	4	11

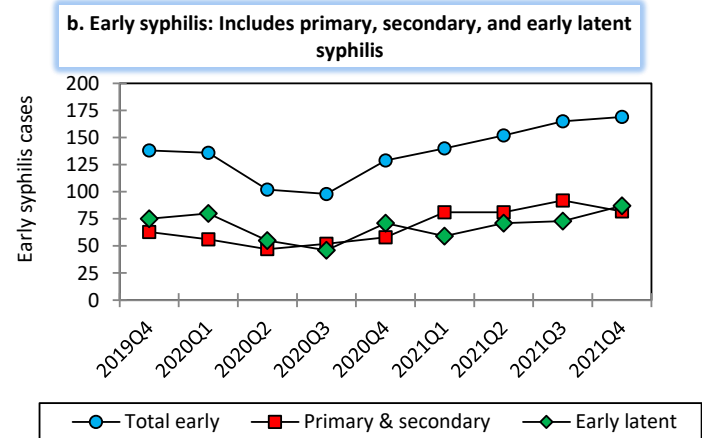
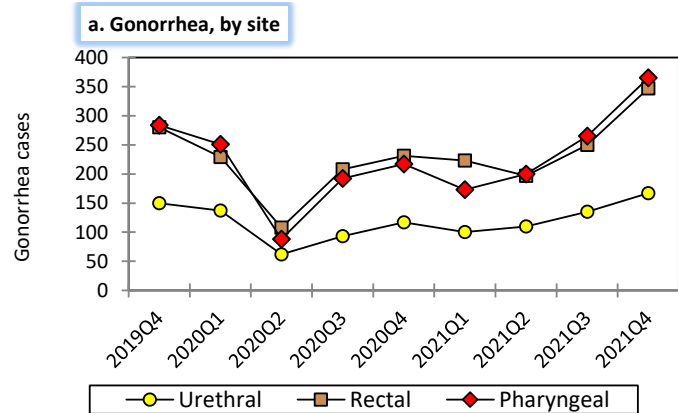
*Column may not equal total due to missing gender or sexual preference data.
^ Genital tract infection
‡ Transgender identity relies on reporting from medical providers and Partner Services Interviews. Data presented here are a potential undercount.

	2020		2021	
	2020Q3	YTD	2021Q3	YTD
Total†	47	144	75	174
MSM	35	102	44	110
Women	7	26	15	25
MSW	0	3	4	8
Transgender‡	1	3	0	8

* Data shown for prior quarter due to reporting delay.
† Column may not equal total due to missing sexual preference data.
‡ Transgender identity relies on review of information documented in medical records and obtained through Partner Services Interviews. Data presented here are a potential undercount.

Trends in STI Morbidity

Figure 2: Quarterly King County STI morbidity among MSM**



**Footnote: Chlamydia case data on gender of sex partners and anatomic site of infection are incomplete for these time periods. For this reason chlamydia cases are not shown by population.

Trends in STI Morbidity

Figure 1: Quarterly King County STI morbidity, women and MSW**

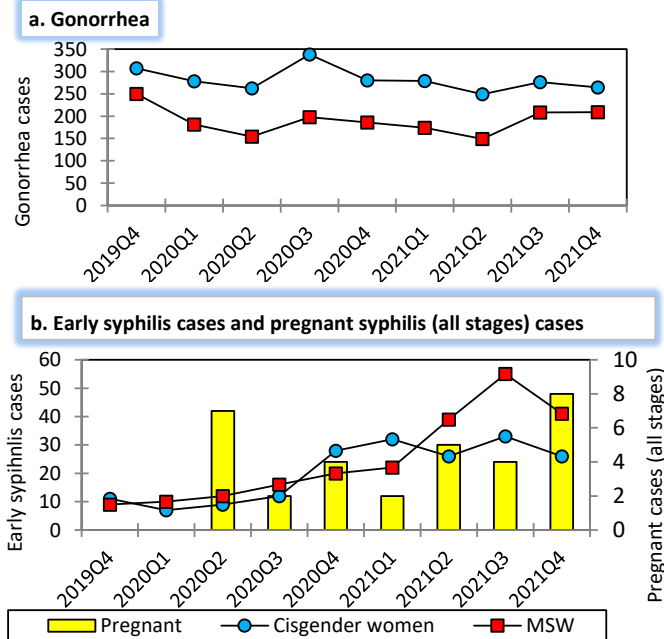
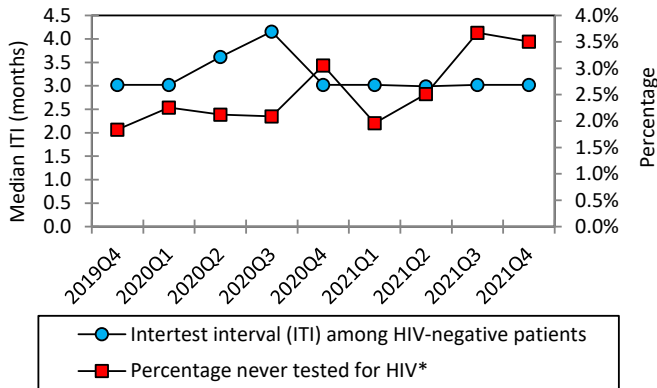


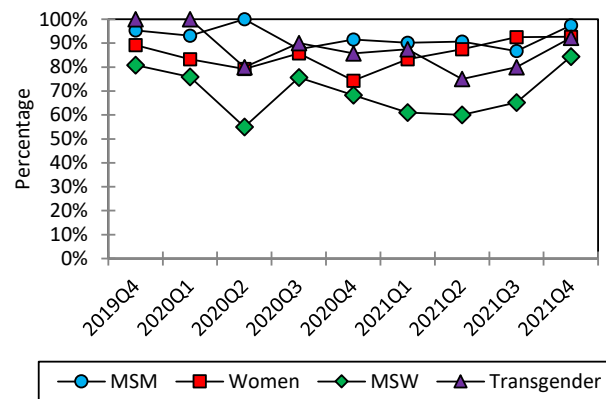
Figure 3: HIV testing among PHSKC Sexual Health Clinic patients, MSM (note different scales)



* Denominator includes patients who reported never testing or negative/unknown results

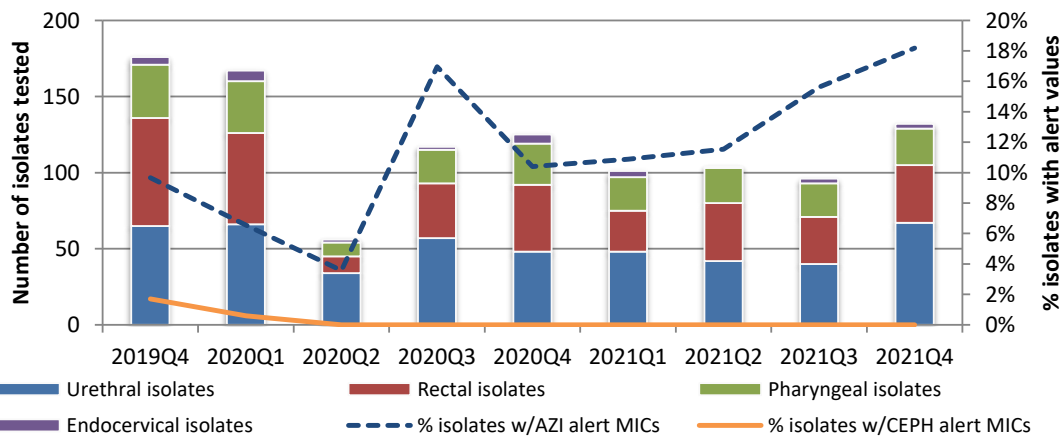
HIV testing should be performed annually on low-risk MSM and quarterly on high-risk MSM^a.

Figure 4: Percentage of King County residents with a bacterial STI tested for HIV (excludes HIV+ residents)



Anyone diagnosed with a bacterial STI should be tested for HIV.

Figure 5: Percentage of SURRG^b isolates with alert values for cephalosporins (CEPH) or azithromycin (AZI) (note scales)



Alert value = Minimum Inhibitory Concentration (MIC, lowest antibiotic concentration needed to halt bacterial growth) is higher than preset thresholds^c. Alert value MICs represent decreased susceptibility to an antibiotic but may not represent resistance.

Footnotes and Abbreviations:

MSM = cisgender men who have sex with men
 MSW = cisgender men who have sex with women
^aHigh-risk = MSM with any one of the following in the prior year: diagnosis of a bacterial STI, methamphetamine or popper use, ≥10 sex partners (anal or oral), or unprotected anal sex with a partner of unknown or discordant HIV status
 Low-risk = sexually active MSM who do not meet high-risk criteria
^bSURRG = Strengthening the U.S. Response to Resistant Gonorrhea Surveillance, supported by the Centers for Disease Control and Prevention
^cAlert values:
 Ceftriaxone MIC ≥ 0.125 µg/ml Cefixime MIC ≥ 0.25 µg/ml
 Azithromycin MIC ≥ 2.0 µg/ml

Table 3: SURRG isolates with alert values for cephalosporins (ceph) or azithromycin (azi)

	2021Q4		YTD	
Unique cases tested*	122		386	
MSM	94		290	
MSW	22		77	
Cisgender Women	5		15	
Transgender	1		4	
Alert cases and % of cases with alert MICs	Azi N (%)	Ceph N (%)	Azi N (%)	Ceph N (%)
Unique alert cases*	21 (17)	0 (0)	54 (14)	0 (0)
MSM	19 (20)	0 (0)	50 (17)	0 (0)
MSW	1 (5)	0 (0)	3 (4)	0 (0)
Cisgender Women	0 (0)	0 (0)	0 (0)	0 (0)
Transgender	1 (100)	0 (0)	0 (0)	0 (0)

* Column may not equal total due to missing sexual preference data