

**NOTES**

1. CONTRACTOR SHALL FIELD VERIFY ALL DIMENSIONS.
2. CONTRACTOR SHALL MAINTAIN A 10'-0" MINIMUM SEPARATION BETWEEN THE PROPOSED GPS UNIT, TRANSMITTING ANTENNAS AND EXISTING GPS UNITS.
3. ANTENNAS AND MOUNTS OMITTED FOR CLARITY.



5701 SOUTH SANTA FE DRIVE  
LITTLETON, CO 80120



1000 HOLCOMB WOODS PKWY,  
SUITE 210  
ROSWELL, GA 30076  
678-280-2325



UBI NUMBER: 604-106-184

IT IS A VIOLATION OF LAW FOR ANY PERSON, UNLESS THEY ARE ACTING UNDER THE DIRECTION OF A LICENSED PROFESSIONAL ENGINEER, TO ALTER THIS DOCUMENT.

DRAWN BY:	CHECKED BY:	APPROVED BY:
MAM	DM	MSB

RFDS REV #: ---

**CONSTRUCTION DOCUMENTS**

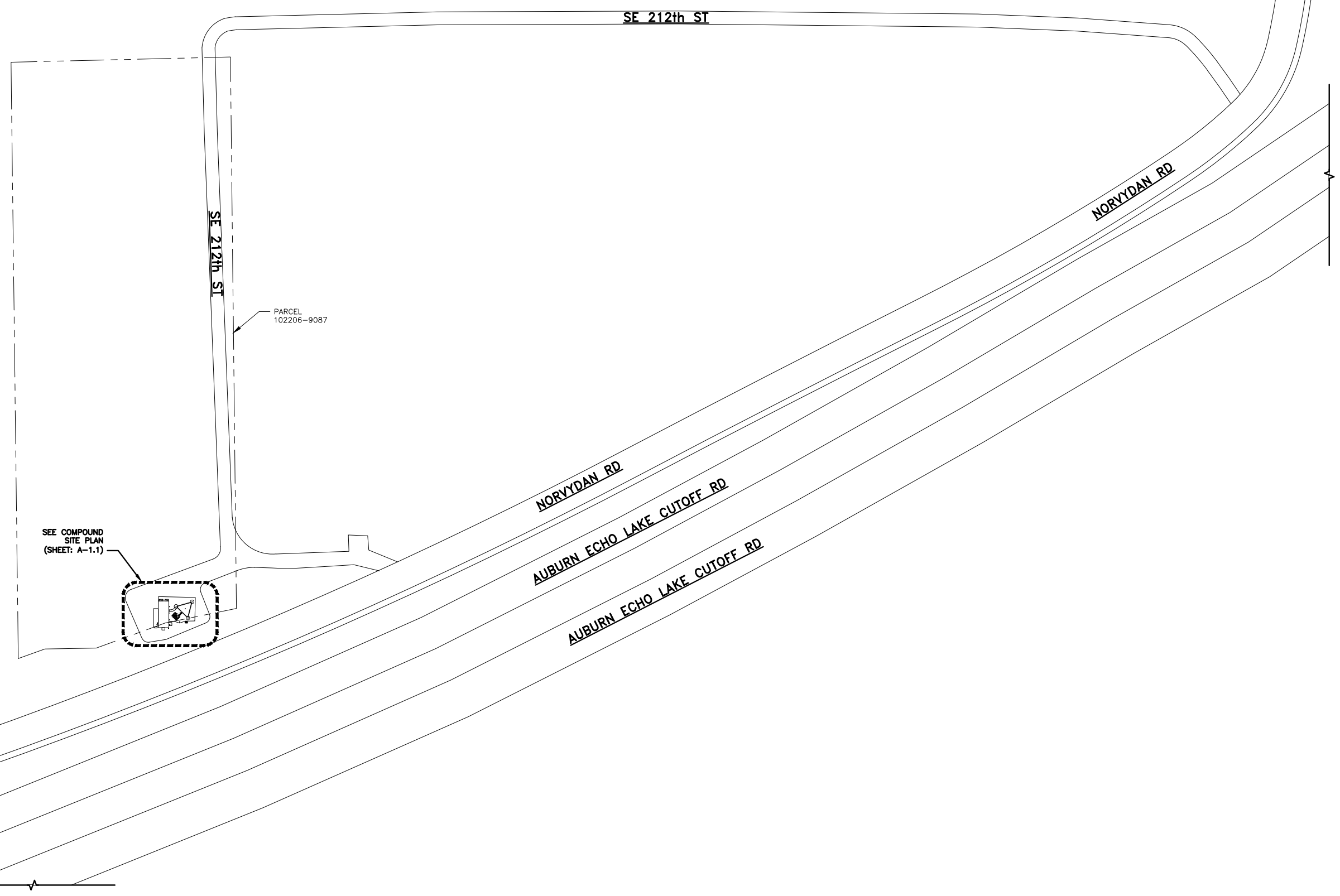
SUBMITTALS		
REV	DATE	DESCRIPTION
A	09/15/2021	ISSUED FOR REVIEW
0	09/30/2021	ISSUED FOR CONSTRUCTION

A&E PROJECT NUMBER  
21CCD5N-0048

DISH Wireless L.L.C.  
PROJECT INFORMATION  
  
SESEA00235A  
23235 SE 212TH ST.  
MAPLE VALLEY, WA 98038

SHEET TITLE  
OVERALL PARCEL  
PLAN

SHEET NUMBER  
**A-1**



PARCEL  
102206-9087

SEE COMPOUND  
SITE PLAN  
(SHEET: A-1.1)



**OVERALL PARCEL PLAN**

