



**King County
Permitting Division**

Department of Local Services
35030 SE Douglas Street, Suite 210
Snoqualmie, WA 98065-9266
206-296-6600 TTY Relay: 711
www.kingcounty.gov/permits

Notice of Application

(Type 2)

Project Name: Khalsa Short Plat	File No.: SPLT21-0003
Applicant: Navdeep Gill 27410 Marine View DR S. Des Moines, WA 98198	Permitting Project Manager: Christi Vogler, KC Associate Planner Telephone No.: 206-477-0358 E-mail: christine.vogler@kingcounty.gov
	Date Application Filed: April 29, 2021 Date Determined Complete: July 19, 2021 Date of Mailing: August 2, 2021
Project Location: 14030 SE 187 th St, Renton, 98058 Parcel No. 342305-9076	
Project Description: 6-lot Short subdivision of approximately 141,131 SF lot, zoned R-6, for the development of detached single-family residences.	
Permits requested in this application: Short Subdivision	
Relevant documents are available online at www.kingcounty.gov/permits/ , or at the address above.	
Consistency with applicable County plans and regulations: This proposal will be reviewed for compliance with all applicable King County Codes, including Roads Standards, Surface water Design Manual, Zoning, Grading and Critical Areas Codes.	
Other permits not included in this application, known at this time: N/A	

The Department of Local Services, Permitting Division will issue a decision on this application following a minimum **21-day public comment period which ends Thursday, August 26, 2021**. Written comments on this application must be submitted to Permitting Division at the address above. A public hearing is not required for this application prior to the Permitting Division's decision. However, the decision may be appealed to the King County Hearing Examiner, who would conduct an appeal hearing prior to making a decision on the appeal. Details of the appeal process will be included in the notice of decision.

Any person wishing additional information on this proposed project should contact the Project Manager at the phone number or e-mail listed above. You may review the application and any documents or studies in our Snoqualmie office, or at www.kingcounty.gov/permits/.

NOTE: To request this information in alternative formats for people with disabilities, please call 206-296-6600 or TTY Relay: 711.

If you wish to receive a copy of the Permitting Division's Report and Decision on this application, complete and return the portion below to the Department of Local Services, Permitting Division at the address listed above.

=====
Please send me notification of any official notices concerning this application. **(Please print clearly)**

File No.: _____

Name: _____ Telephone: _____

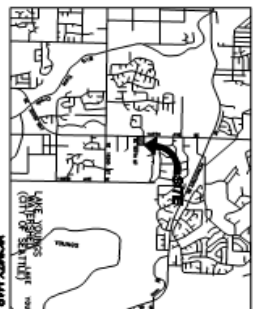
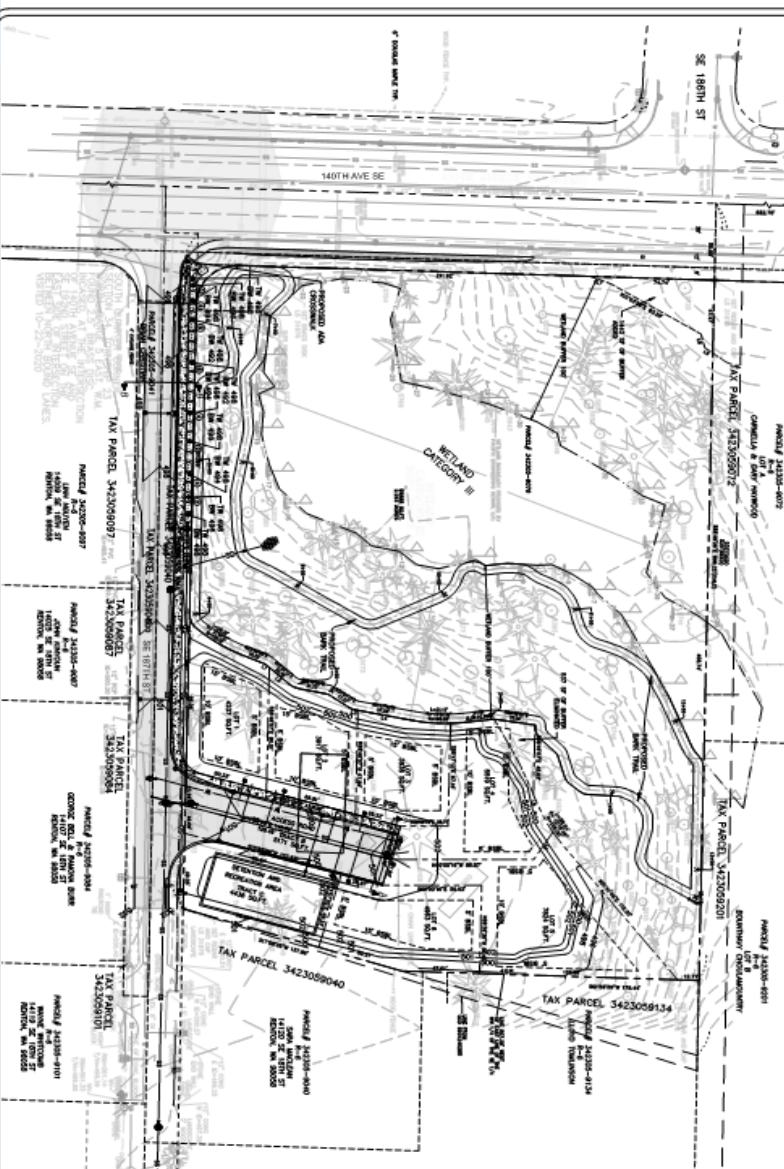
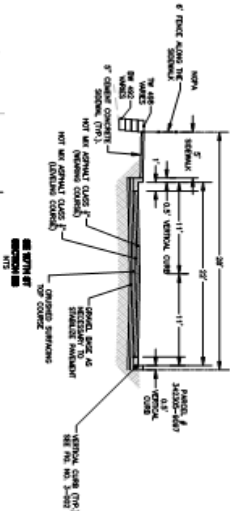
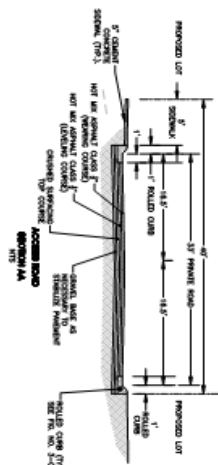
Email: _____

Address: (optional): _____

Notifications will be sent via email unless hard copy is requested

PROJECT NO. 200903

PRELIMINARY PLAT



LEGEND

- 1.00' WETLAND CATEGORY II
- 2.00' WETLAND CATEGORY II
- 3.00' WETLAND CATEGORY II
- 4.00' WETLAND CATEGORY II
- 5.00' WETLAND CATEGORY II
- 6.00' WETLAND CATEGORY II
- 7.00' WETLAND CATEGORY II
- 8.00' WETLAND CATEGORY II
- 9.00' WETLAND CATEGORY II
- 10.00' WETLAND CATEGORY II
- 11.00' WETLAND CATEGORY II
- 12.00' WETLAND CATEGORY II
- 13.00' WETLAND CATEGORY II
- 14.00' WETLAND CATEGORY II
- 15.00' WETLAND CATEGORY II
- 16.00' WETLAND CATEGORY II
- 17.00' WETLAND CATEGORY II
- 18.00' WETLAND CATEGORY II
- 19.00' WETLAND CATEGORY II
- 20.00' WETLAND CATEGORY II
- 21.00' WETLAND CATEGORY II
- 22.00' WETLAND CATEGORY II
- 23.00' WETLAND CATEGORY II
- 24.00' WETLAND CATEGORY II
- 25.00' WETLAND CATEGORY II
- 26.00' WETLAND CATEGORY II
- 27.00' WETLAND CATEGORY II
- 28.00' WETLAND CATEGORY II
- 29.00' WETLAND CATEGORY II
- 30.00' WETLAND CATEGORY II
- 31.00' WETLAND CATEGORY II
- 32.00' WETLAND CATEGORY II
- 33.00' WETLAND CATEGORY II
- 34.00' WETLAND CATEGORY II
- 35.00' WETLAND CATEGORY II
- 36.00' WETLAND CATEGORY II
- 37.00' WETLAND CATEGORY II
- 38.00' WETLAND CATEGORY II
- 39.00' WETLAND CATEGORY II
- 40.00' WETLAND CATEGORY II
- 41.00' WETLAND CATEGORY II
- 42.00' WETLAND CATEGORY II
- 43.00' WETLAND CATEGORY II
- 44.00' WETLAND CATEGORY II
- 45.00' WETLAND CATEGORY II
- 46.00' WETLAND CATEGORY II
- 47.00' WETLAND CATEGORY II
- 48.00' WETLAND CATEGORY II
- 49.00' WETLAND CATEGORY II
- 50.00' WETLAND CATEGORY II
- 51.00' WETLAND CATEGORY II
- 52.00' WETLAND CATEGORY II
- 53.00' WETLAND CATEGORY II
- 54.00' WETLAND CATEGORY II
- 55.00' WETLAND CATEGORY II
- 56.00' WETLAND CATEGORY II
- 57.00' WETLAND CATEGORY II
- 58.00' WETLAND CATEGORY II
- 59.00' WETLAND CATEGORY II
- 60.00' WETLAND CATEGORY II
- 61.00' WETLAND CATEGORY II
- 62.00' WETLAND CATEGORY II
- 63.00' WETLAND CATEGORY II
- 64.00' WETLAND CATEGORY II
- 65.00' WETLAND CATEGORY II
- 66.00' WETLAND CATEGORY II
- 67.00' WETLAND CATEGORY II
- 68.00' WETLAND CATEGORY II
- 69.00' WETLAND CATEGORY II
- 70.00' WETLAND CATEGORY II
- 71.00' WETLAND CATEGORY II
- 72.00' WETLAND CATEGORY II
- 73.00' WETLAND CATEGORY II
- 74.00' WETLAND CATEGORY II
- 75.00' WETLAND CATEGORY II
- 76.00' WETLAND CATEGORY II
- 77.00' WETLAND CATEGORY II
- 78.00' WETLAND CATEGORY II
- 79.00' WETLAND CATEGORY II
- 80.00' WETLAND CATEGORY II
- 81.00' WETLAND CATEGORY II
- 82.00' WETLAND CATEGORY II
- 83.00' WETLAND CATEGORY II
- 84.00' WETLAND CATEGORY II
- 85.00' WETLAND CATEGORY II
- 86.00' WETLAND CATEGORY II
- 87.00' WETLAND CATEGORY II
- 88.00' WETLAND CATEGORY II
- 89.00' WETLAND CATEGORY II
- 90.00' WETLAND CATEGORY II
- 91.00' WETLAND CATEGORY II
- 92.00' WETLAND CATEGORY II
- 93.00' WETLAND CATEGORY II
- 94.00' WETLAND CATEGORY II
- 95.00' WETLAND CATEGORY II
- 96.00' WETLAND CATEGORY II
- 97.00' WETLAND CATEGORY II
- 98.00' WETLAND CATEGORY II
- 99.00' WETLAND CATEGORY II
- 100.00' WETLAND CATEGORY II



PROJECT NO. 200903
 DRAWN BY: PJP
 DATE: 08-28-2009
 SHEET NO.:

KHALSA SHORT PLAT
 KING COUNTY
 KHALSA ENGINEERING, LLC
 10000 1st Avenue, Suite 100
 Kent, WA 98032

Pacific Engineering Design, LLC
 Civil Engineering and Planning Consultants
 15445 65RD AVE. S., SEATTLE, WA 98148
 PHONE: (206) 491-7970
 FAX: (206) 491-7970
 WEB SITE: PACEKD.COM

P01