

15445 53RD AVE. S.  
SEATTLE, WA 98188  
PHONE: (206) 431-7970  
FAX: (206) 388-1648  
WEB SITE: PACENG.COM

**Pacific  
Engineering  
Design, LLC**

Civil Engineering and  
Planning Consultants

**KHALSA SHORT PLAT**

KING COUNTY

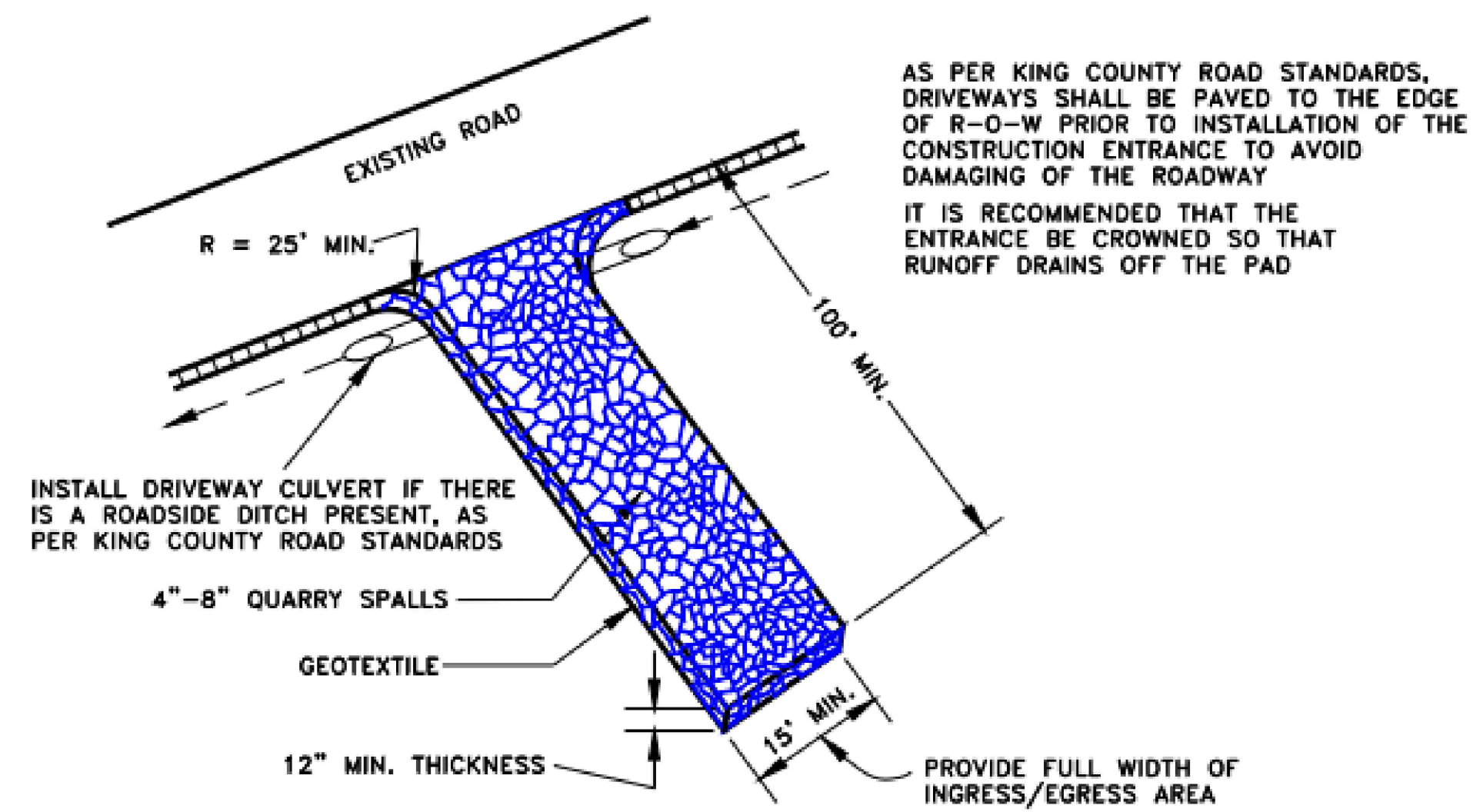
FOR:  
KHALSA DEVELOPMENT LLC  
2740 MARINE VIEW DR. S  
DES MOINES, WA 98188

PROJECT NO.: **20020**  
DRAWN BY: **PJP**  
ISSUE DATE: **02-18-2021**  
SHEET REV.:

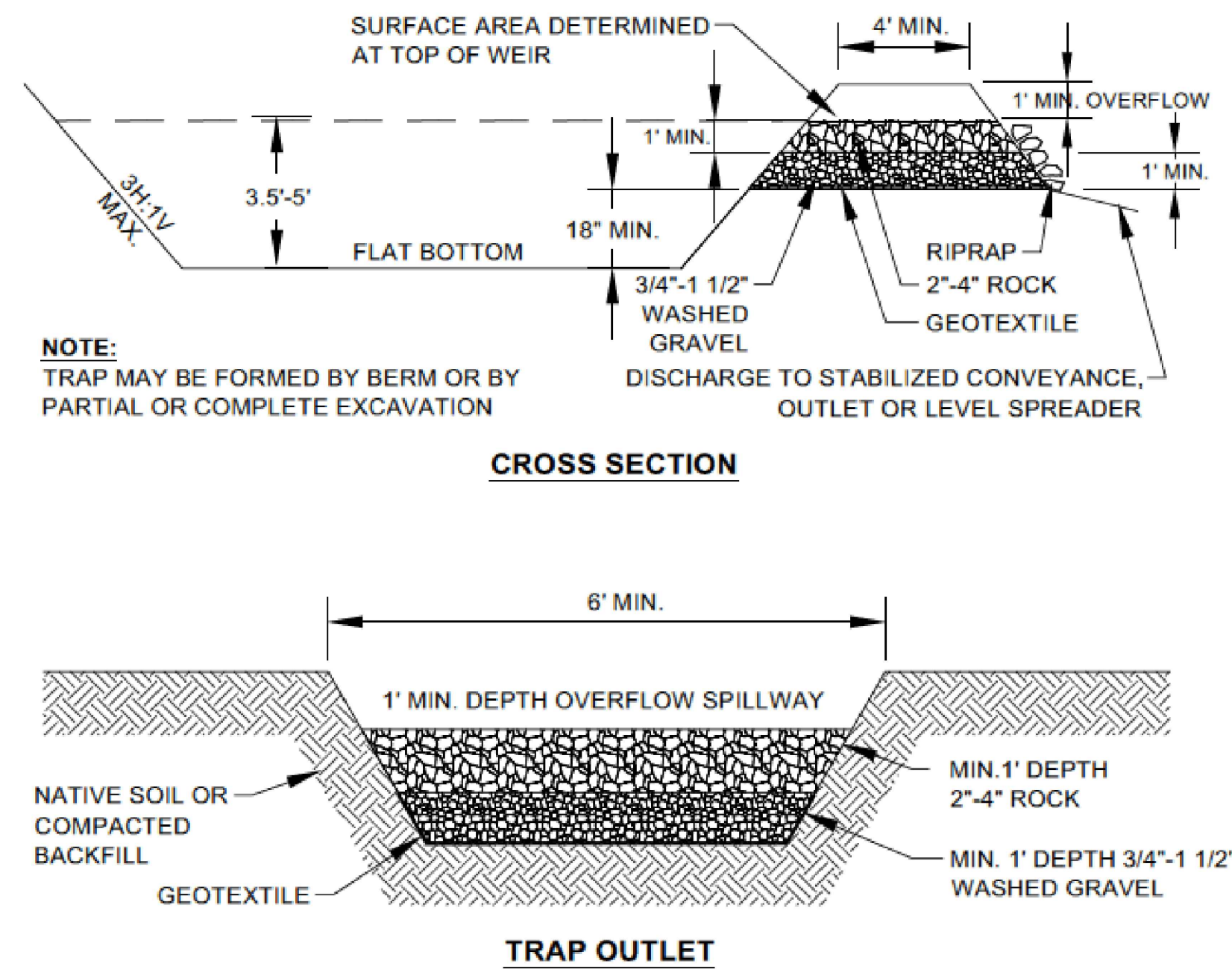
**TESC PLAN**

19018CV01.DWG  
**P02**  
SHEET 02 OF 05

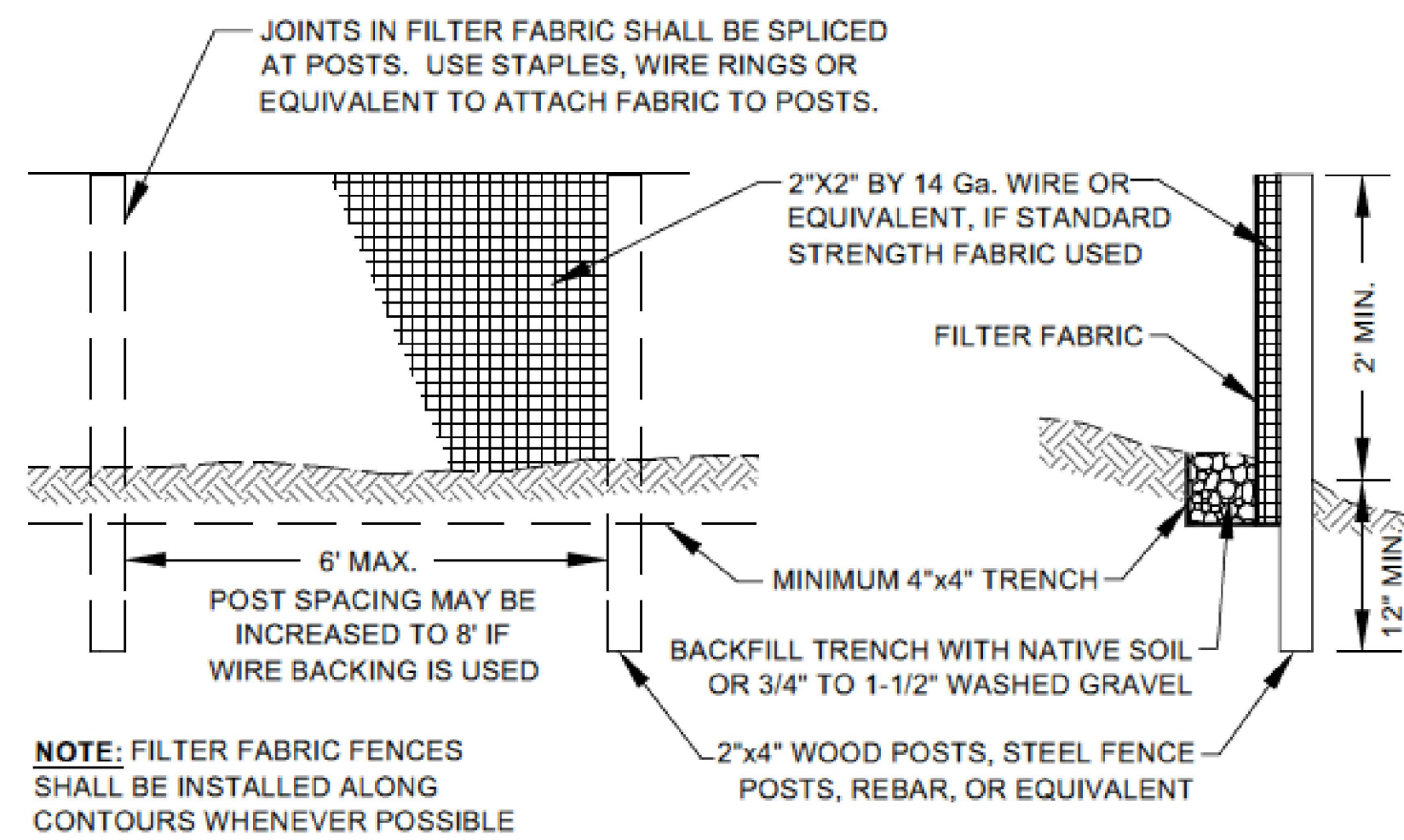
**FIGURE D.3.4.A STABILIZED CONSTRUCTION ENTRANCE**



**FIGURE D.2.1.5.A SEDIMENT TRAP**



**FIGURE C.3.6.A SILT FENCE**



**FIGURE C.3.6.B SILT FENCE INSTALLATION AND MAINTENANCE**

**EROSION AND SEDIMENT CONTROL RECOMMENDED CONSTRUCTION SEQUENCES:**

A DETAILED CONSTRUCTION SEQUENCE IS NEEDED TO ENSURE THAT EROSION AND SEDIMENT CONTROL MEASURES ARE APPLIED AT THE APPROPRIATE TIMES. A RECOMMENDED CONSTRUCTION SEQUENCE IS PROVIDED BELOW:

- HOLD THE PRE-CONSTRUCTION MEETING.
- POST SIGN WITH NAME AND PHONE NUMBER OF ESC SUPERVISOR (MAY BE CONSOLIDATED WITH THE REQUIRED NOTICE OF CONSTRUCTION SIGN).
- FLAG OR FENCE CLEARING LIMITS.
- INSTALL CATCH BASIN PROTECTION, IF REQUIRED.
- GRADE AND INSTALL CONSTRUCTION ENTRANCE(S).
- INSTALL PERIMETER PROTECTION (SILT FENCE, BRUSH BARRIER, ETC.).
- CONSTRUCT SEDIMENT PONDS AND TRAPS.
- GRADE AND STABILIZE CONSTRUCTION ROADS.
- CONSTRUCT SURFACE WATER CONTROLS (INTERCEPTOR DIKS, PIPE SLOPE DRAINS, ETC.) SIMULTANEOUSLY WITH CLEARING AND GRADING FOR PROJECT DEVELOPMENT.
- MAINTAIN EROSION CONTROL MEASURES IN ACCORDANCE WITH KING COUNTY STANDARDS AND MANUFACTURER'S RECOMMENDATIONS.
- RELOCATE EROSION CONTROL MEASURES, OR INSTALL NEW MEASURES SO THAT AS SITE CONDITIONS CHANGE, THE EROSION AND SEDIMENT CONTROL IS ALWAYS IN ACCORDANCE WITH THE KING COUNTY EROSION AND SEDIMENT CONTROL STANDARDS.
- COVER ALL AREAS THAT WILL BE UNWORKED FOR MORE THAN SEVEN DAYS DURING THE DRY SEASON OR TWO DAYS DURING THE WET SEASON WITH STRAW, WOOD FIBER MULCH, COMPOST, PLASTIC SHEETING, OR EQUIVALENT.
- STABILIZE ALL AREAS WITHIN SEVEN DAYS OF REACHING FINAL GRADE.
- SEED, SOD, STABILIZE, OR COVER ANY AREAS TO REMAIN UNWORKED FOR MORE THAN 30 DAYS.
- UPON COMPLETION OF THE PROJECT, STABILIZE ALL DISTURBED AREAS AND REMOVE BMPs IF APPROPRIATE.

**EROSION AND SEDIMENTATION CONTROL NOTES**

- APPROVAL OF THIS EROSION/SEDIMENTATION CONTROL (ESC) PLAN DOES NOT CONSTITUTE AN APPROVAL OF PERMANENT ROAD OR DRAINAGE DESIGN (E.G. SIZE AND LOCATION OF ROADS, PIPES, RESTRICTORS, CHANNELS, RETENTION FACILITIES, UTILITIES).
- THE IMPLEMENTATION OF THESE ESC PLANS AND THE CONSTRUCTION, MAINTENANCE, REPLACEMENT, AND UPGRADING OF THESE ESC FACILITIES IS THE RESPONSIBILITY OF THE APPLICANT/CONTRACTOR UNTIL ALL CONSTRUCTION IS COMPLETED AND APPROVED AND VEGETATION/LANDSCAPING IS ESTABLISHED.
- THE BOUNDARIES OF THE CLEARING LIMITS SHOWN ON THIS PLAN SHALL BE CLEARLY FLAGGED IN THE FIELD PRIOR TO CONSTRUCTION. DURING THE CONSTRUCTION PERIOD, NO DISTURBANCE BEYOND THE FLAGGED CLEARING LIMITS SHALL BE PERMITTED. THE FLAGGING SHALL BE MAINTAINED BY THE APPLICANT/CONTRACTOR FOR THE DURATION OF CONSTRUCTION.
- THE ESC FACILITIES SHOWN ON THIS PLAN MUST BE CONSTRUCTED IN CONJUNCTION WITH ALL CLEARING AND GRADING ACTIVITIES, AND IN SUCH A MANNER AS TO ENSURE THAT SEDIMENT AND SEDIMENT LADEN WATER DO NOT ENTER THE DRAINAGE SYSTEM, ROADWAYS, OR VIOLATE APPLICABLE WATER QUALITY STANDARDS.
- THE ESC FACILITIES SHOWN ON THIS PLAN ARE THE MINIMUM REQUIREMENTS FOR ANTICIPATED SITE CONDITIONS. DURING THE CONSTRUCTION PERIOD, THESE ESC FACILITIES SHALL BE UPGRADED AS NEEDED FOR UNEXPECTED STORM EVENTS AND TO ENSURE THAT SEDIMENT AND SEDIMENT-LADEN WATER DO NOT LEAVE THE SITE.
- THE ESC FACILITIES SHALL BE INSPECTED ROUTINELY AND MAINTAINED BY THE APPLICANT/CONTRACTOR TO ENSURE THEIR CONTINUED FUNCTIONING, ESPECIALLY AFTER STORM EVENTS.
- THE ESC FACILITIES ON INACTIVE SITES SHALL BE INSPECTED AND MAINTAINED A MINIMUM OF ONCE A MONTH OR WITHIN THE 48 HOURS FOLLOWING A MAJOR STORM EVENT.
- AT NO TIME SHALL MORE THAN ONE FOOT OF SEDIMENT BE ALLOWED TO ACCUMULATE WITHIN A TRAPPED CATCH BASIN. ALL CATCH BASINS AND CONVEYANCE LINES SHALL BE CLEANED PRIOR TO PAVING. THE CLEANING OPERATION SHALL NOT FLUSH SEDIMENT LADEN WATER INTO THE DOWNSTREAM SYSTEM.
- STABILIZED CONSTRUCTION ENTRANCES SHALL BE INSTALLED AT THE BEGINNING OF CONSTRUCTION AND MAINTAINED FOR THE DURATION OF THE PROJECT. ADDITIONAL MEASURES MAY BE REQUIRED TO ENSURE THAT ALL PAVED AREAS ARE KEPT CLEAN FOR THE DURATION OF THE PROJECT.
- THE CONTRACTOR SHALL PROVIDE PERIODIC STREET CLEANING TO REMOVE DEBRIS AND SEDIMENT TRACKED OFF THE SITE.
- APPROPRIATE MEASURES SHALL BE TAKEN TO STOP SEDIMENT FROM ENTERING SURFACE WATER BODIES IF THE PROPOSED BMPs FAIL.
- BARE AND/OR DISTURBED SOILS SHALL REMAIN UNCOVERED AND/OR UNSTABILIZED FOR NO MORE THAN 2 DAYS FROM OCTOBER 1 THROUGH APRIL 30, AND FOR NO MORE THAN 7 DAYS FROM MAY 1 THROUGH SEPTEMBER 30.



15445 53RD AVE. S.  
SEATTLE, WA 98188  
PHONE: (206) 431-7970  
FAX: (206) 388-1648  
WEB SITE: PACENG.COM

**Pacific Engineering Design, LLC**  
Civil Engineering and Planning Consultants

**KING COUNTY**

**KHALSA SHORT PLAT**

FOR: KHALSA DEVELOPMENT LLC  
27410 MARINE VIEW DR. S  
DES MOINES, WA 98188

PROJECT NO.: **20020**  
DRAWN BY: **PJP**  
ISSUE DATE: **02-18-2021**  
SHEET REV.:

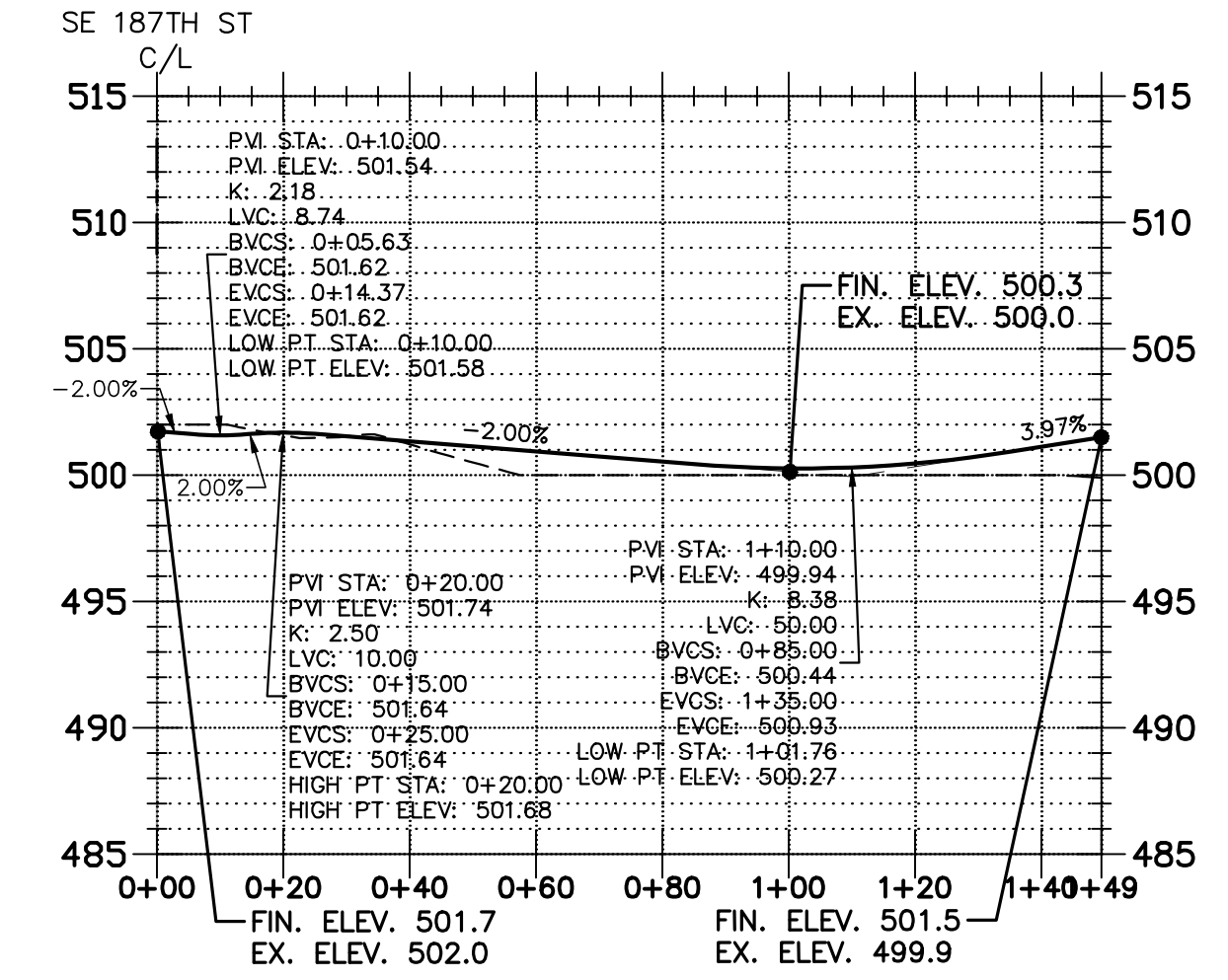
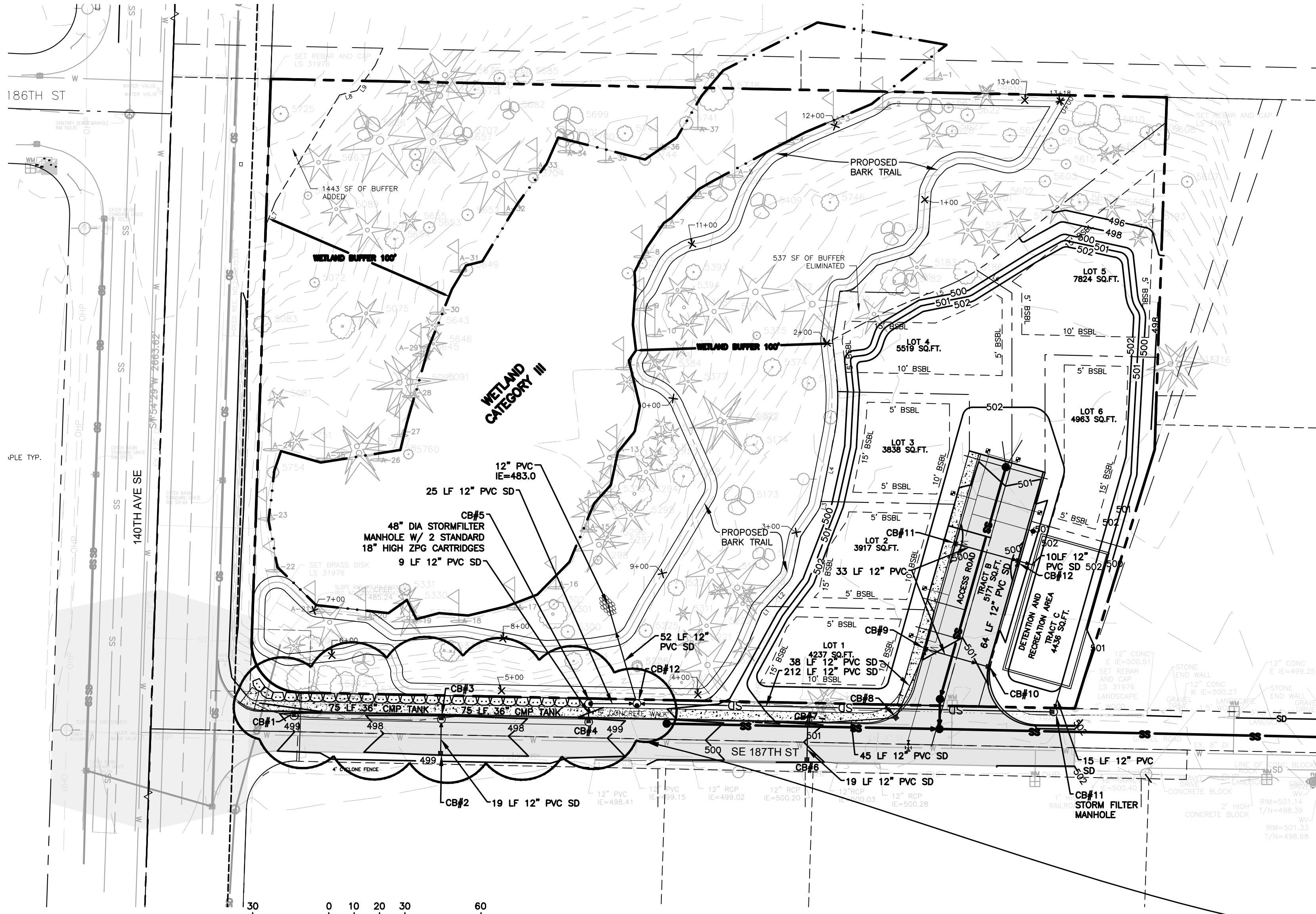
**TESC DETAILS**

19018CV01.DWG  
**P03**  
SHEET 03 OF 05

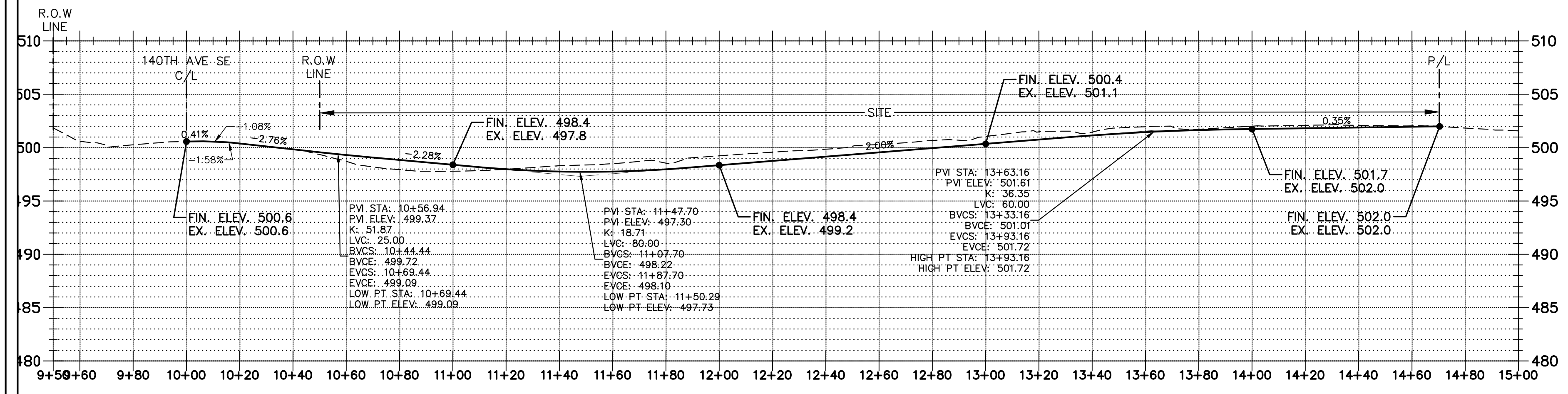


15445 53RD AVE. S.  
SEATTLE, WA 98188  
PHONE: (206) 431-7970  
FAX: (206) 388-1648  
WEB SITE: PACENG.COM

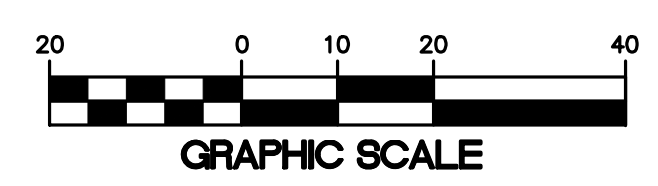
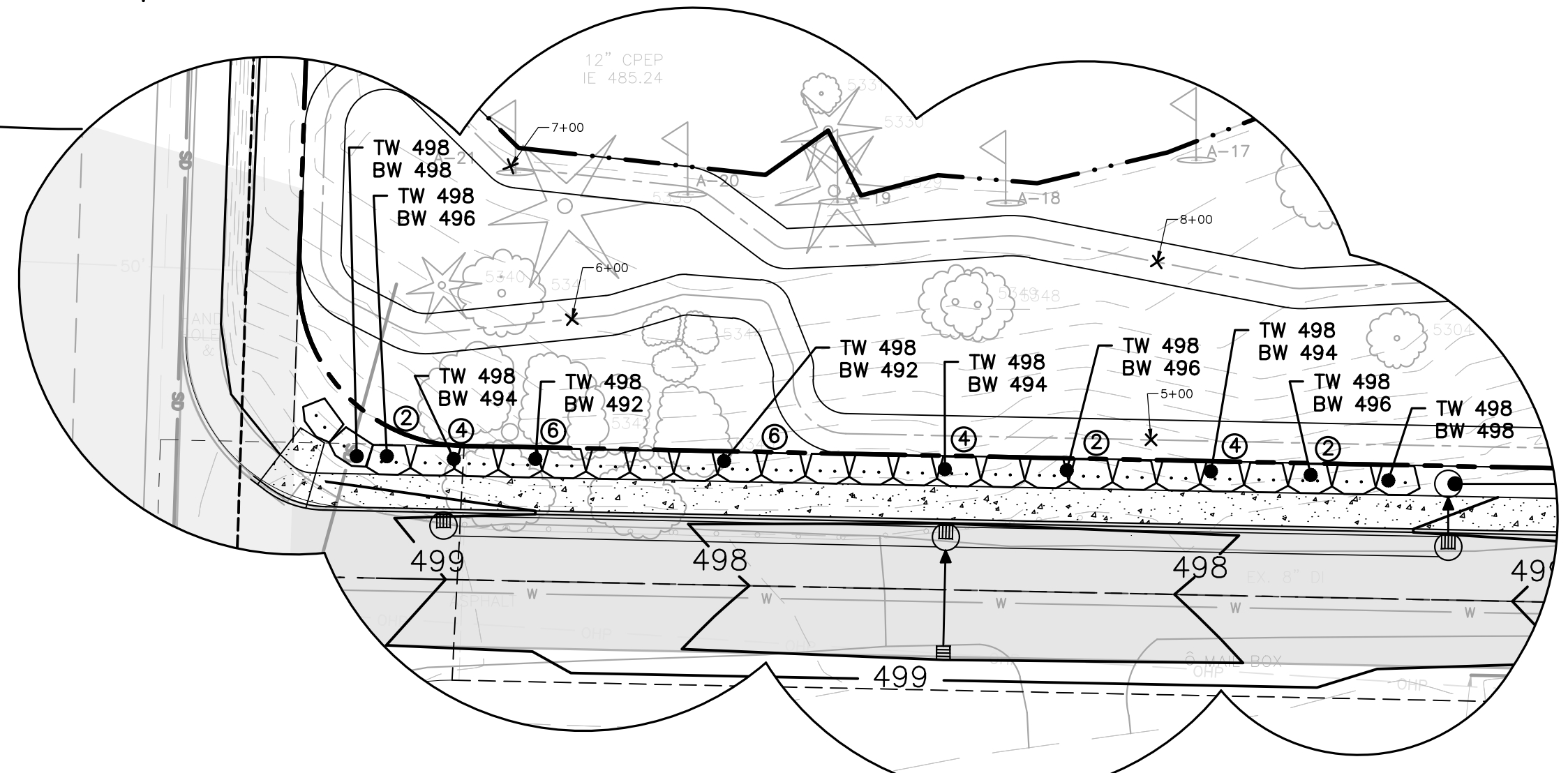
**Pacific Engineering Design, LLC**  
Civil Engineering and Planning Consultants



**ACCESS ROAD PROFILE**  
H. SCALE: 1"=30'  
V. SCALE: 1"=5'



**SE 187TH ST PROFILE**  
H. SCALE: 1"=30'  
V. SCALE: 1"=5'



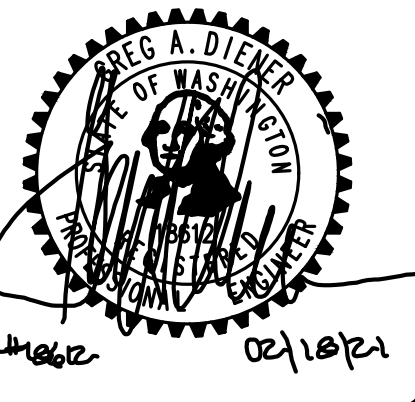
**KHALSA SHORT PLAT**  
KING COUNTY

FOR:  
KHALSA DEVELOPMENT LLC  
27410 MARINE VIEW DR. S  
DES MOINES, WA 98188

PROJECT NO.: 20020  
DRAWN BY: PJP  
ISSUE DATE: 02-18-2021  
SHEET REV:

**GRADING AND DRAINAGE PLAN AND PROFILE**

19018CV01.DWG  
**P04**  
SHEET 04 OF 05



15445 53RD AVE. S.  
SEATTLE, WA 98188  
PHONE: (206) 431-7970  
FAX: (206) 388-1648  
WEB SITE: PACENG.COM

**Pacific Engineering Design, LLC**

Civil Engineering and Planning Consultants

**KHALSA SHORT PLAT**  
KING COUNTY

FOR:  
KHALSA DEVELOPMENT LLC  
27410 MARINE VIEW DR. S  
DES MOINES, WA 98168

PROJECT NO.: **20020**  
DRAWN BY: **PJP**  
ISSUE DATE: **02-18-2021**  
SHEET REV.:

UTILITY PLAN

19018CV01.DWG  
**P05**  
SHEET 05 OF 05

