

1
2
3
4
5
6
7
8
9
10
11
12
13
14
15
16
17
18
19
20
21
22
23
24

Appendix A: Capital Facilities and Utilities

December 2023



King County

25
26
27
28
29
30
31
32
33
34
35
36
37
38
39
40
41
42
43
44
45
46
47
48
49
50
51
52

Table of Contents

I. Capital Facilities	3
A. Introduction	3
B. State Requirements.....	3
1. Growth Management Act Goals and Requirements.....	3
2. King County Countywide Planning Policies	4
C. Capital Facilities Inventories and Planning	4
1. Facilities Provided by King County	4
2. Facilities provided by other public entities	6
II. Utilities	13
A. Introduction	13
B. State Requirements.....	13
C. Utilities Facilities Inventories	13
1. Electric.....	14
2. Natural Gas.....	15
3. Telecommunications	15
Attachment A	18
Supplemental materials adopted for the purposes of this appendix.....	18

53
54
55
56
57
58
59
60
61
62
63
64
65
66
67
68
69
70
71
72
73
74
75
76
77
78
79
80
81
82
83
84
85
86
87
88
89
90
91
92
93
94
95
96
97

I. Capital Facilities

A. Introduction

The capital facilities element of the King County Comprehensive Plan is comprised of two parts: Chapter 9: Services, Facilities and Utilities and this Appendix A. Chapter 9: Services, Facilities and Utilities establishes policy regarding planning for and financing of publicly owned capital facilities to serve the needs of existing and new residents. Together, Chapter 9 and this appendix address how King County should meet its capital facilities responsibilities.

This section of Appendix A is a review of the current state of planning and financing for public facilities and services in King County. The facilities are organized into two sections: those owned by King County and those owned by other public entities. The development of this appendix was guided by an integrated set of local policies and plans. Listed documents are adopted by reference for the purposes of this appendix.

B. State Requirements

Chapter 9: Services, Facilities and Utilities and this Appendix, including referenced documents, implement the requirements of the state requirements listed below.

1. Growth Management Act Goals and Requirements

The Growth Management Act (RCW 36.70A.020) requires that public facilities and services necessary to support development be adequate to serve the development at the time the development is available for occupancy and use, and without decreasing current service levels below established minimum standards.

The Growth Management Act (RCW 36.70A.070 and WAC 365-196-415) requires that comprehensive plans include a capital facilities plan element consisting of:

- An inventory of existing capital facilities owned by public entities, showing the locations and capacities of the capital facilities;
- A forecast of the future needs for such capital facilities;
- The proposed locations and capacities of expanded or new capital facilities;
- At least a six-year plan that will finance such capital facilities within projected funding capacities and clearly identifies sources of public money for such purposes; and
- A requirement to reassess the land use element if probable funding falls short of meeting existing needs and to ensure that the land use element, capital facilities plan element are coordinated and consistent.

This element must include public "green infrastructure," which are natural assets (including parks and other areas with protected tree canopy) and built facilities in the Urban Growth Area that manage wet weather and that maintain and restore natural hydrology by storing, infiltrating, evapotranspiring, and harvesting and using stormwater.

98 WAC 365-196-415 and the Washington State Department of Commerce’s Capital Facilities
99 Planning Guidebook provide additional guidance on how to implement this element.
100

101 **2. King County Countywide Planning Policies**
102

103 The Growth Management Act (RCW 36.70A.210) requires counties and cities to coordinate
104 developing and adopting a set of mutually agreed upon planning policies to guide the
105 development of local comprehensive plans. In response to this requirement, elected officials
106 representing the county and the cities and towns of King County joined together to form the
107 King County Growth Management Planning Council and to cooperatively develop and adopt the
108 King County Countywide Planning Policies. Given the important role of special purpose districts
109 in service provision, the Growth Management Planning Council also created seats for
110 representatives of such districts.
111

112 The Countywide Planning Policies provide a framework for developing local jurisdictions’
113 comprehensive plans in King County. This framework provides a mechanism for achieving
114 consistency among comprehensive plans. Jurisdictions’ comprehensive plan must reflect the
115 countywide vision for capital facilities planning, including siting of facilities and the timing and
116 phasing of land development in concert with the availability of facilities and services.
117

118 The Countywide Planning Policies adopted by the King County Council and ratified by the cities
119 call for jurisdictions to provide a full range of urban services (PF-1). The countywide
120 development patterns must provide for a sufficient supply of housing, employment, education,
121 recreation, open space and community and social services.
122

123 **C. Capital Facilities Inventories and Planning**
124

125 **1. Facilities Provided by King County**
126

127 Chapter 9: Services, Facilities and Utilities requires County facility planning and implementation
128 to occur as part of the King County Real Property Asset Management Plan (RAMP).¹ The
129 RAMP contains an inventory of existing King County general government buildings, their
130 locations and conditions, and provides for long-range facility planning. The RAMP is updated
131 once every four years and includes County administrative, court, law enforcement, jail, public
132 health, and human services facilities.
133

134 Additionally, the Capital Improvement Program of the King County Biennial Budget² includes
135 six-year capital facility planning and financing for: emergency medical services; general
136 government services; Harborview Medical Center; King County International Airport; parks,
137 recreation, and open space; public transportation; roads; solid waste; surface water
138 management; and wastewater treatment.
139

140 Combined, these planning processes provide for continuing, cumulative review and updates of
141 all County facility planning and financing consistent with the Comprehensive Plan. Additional
142 facility-specific inventories and planning are as follows.

¹ 2019 King County Real Property Asset Management Plan, Ordinance 19062, Attachment A [\[LINK\]](#)

² 2023-2024 King County Biennial Budget, Capital Improvement Plan, Ordinance 19546, Attachment A [\[LINK\]](#)

143
144
145
146
147
148
149
150
151
152
153
154
155
156
157
158
159
160
161
162
163
164
165
166
167
168
169
170
171
172
173
174
175
176
177
178

a. Parks, Recreation, and Open Space

The King County Open Space Plan³ is adopted as a functional plan of the Comprehensive Plan. The Open Space Plan includes an inventory and locations of existing King County park, recreation, and open space sites and facilities, as well as information about future growth and financing. This information also addresses applicable green infrastructure provided by urban parks and natural areas. More information can also be found in King County Comprehensive Plan Appendix C2: Regional Trail Needs Report.

b. Surface Water Management

An inventory of existing King County stormwater facilities can be found in the King County Geographic Information Systems database. Additional information about inventories, locations, conditions, future needs, and financing of stormwater facilities can be found in the Stormwater Management Program Plan⁴ and National Pollutant Discharge Elimination System Municipal Stormwater Permit Annual Report.⁵ This information also addresses applicable green infrastructure associated with stormwater management.

c. Solid Waste

The Comprehensive Solid Waste Management Plan⁶ includes an inventory and locations of King County solid waste facilities, as well as information about capacities, levels of service, future needs, and financing.

d. Sanitary Sewer Collection and Treatment

Existing inventories and locations, current capacities, levels of service, future needs, and financing for King County’s regional wastewater treatment facilities are available in the King County Regional Wastewater Services Plan,⁷ Combined Sewer Overflow Control Program Update,⁸ Conveyance System Improvement Program Update,⁹ Asset Registry,¹⁰ and Ratepayer Report.¹¹

e. Flood Hazard Management

King County provides flood hazard management services on behalf of the King County Flood Control District. The King County Flood Hazard Management Plan,¹² adopted by both agencies, includes an inventory and locations of existing facilities, current capacities, levels of service, future needs, and financing. More information can also be found in the Flood Control District annual budget and associated Capital Improvement Program.¹³

³ King County Open Space Plan: Parks, Trails, and Natural Areas 2022 Update, Ordinance 19501, Attachment A [\[LINK\]](#)

⁴ Stormwater Management Program 2023 Final [\[LINK\]](#)

⁵ 2021 National Pollutant Discharge Elimination System Municipal Stormwater Permit Annual Report [\[LINK\]](#)

⁶ 2019 Comprehensive Solid Waste Management Plan, Ordinance 18893, Attachment A [\[LINK\]](#)

⁷ Regional Wastewater Services Plan, King County Code Chapter 28.86 [\[LINK\]](#)

⁸ 2018 CSO Control Program Update [\[LINK\]](#)

⁹ 2017 Conveyance System Improvement Program Update [\[LINK\]](#)

¹⁰ 2023 Asset Registry [\[LINK\]](#)

¹¹ 2016 Ratepayer Report [\[LINK\]](#)

¹² 2006 Flood Hazard Management Plan, Ordinance 15673, Attachment A [\[LINK\]](#); as updated by 2013 Flood Hazard Management Plan Update and Progress Report, Ordinance 17697, Attachment A [\[LINK\]](#)

¹³ 2023 King County Flood Control Zone District Budget, Resolution FCD2022-13 [\[LINK\]](#)

179 **f. Emergency Medical Services**

180 The King County Emergency Medical Services Division of Public Health — Seattle & King
181 County is responsible for coordinating regional emergency medical services in King County and
182 for developing, implementing, and administering a mobile intensive paramedic care services
183 program in cooperation with King County fire districts, municipal fire departments, and hospital
184 providers. Information about current services and capacities, levels of service, future needs,
185 and financing are included in the Medic One/Emergency Medical Services Strategic Plan.¹⁴
186

187 **g. Transportation**

188 An inventory and locations of existing King County roadway facilities can be found in the King
189 County Geographic Information Systems database. Additional information about inventories,
190 locations, condition, capacity, levels of service, future needs, and financing of roadway facilities
191 can be found in Comprehensive Plan Appendices C: Transportation, C1: Transportation Needs
192 Report, and C2 Regional Trail Needs Report; the Annual Bridge Report;¹⁵ the Strategic Plan for
193 Road Services;¹⁶ and the Transportation Concurrency Update Report.¹⁷
194

195 An inventory including locations, capacities, levels of service, future needs, and financing for
196 public transit facilities and services can be found in Comprehensive Plan Appendix C:
197 Transportation and King County Metro's Strategic Plan, Service Guidelines, Long Range Plan,¹⁸
198 and Transit System Evaluation.¹⁹
199

200 **h. Criminal Legal System**

201 Capital facility planning and financing for county court, law enforcement, and jail facilities are
202 addressed through the RAMP and the King County Biennial Budget.
203

204 **2. Facilities provided by other public entities**

205
206 For facilities provided by other public entities, RCW 36.70A.070(3) requires the County to:

- 207 1. identify all public entities that own capital facilities; and
208 2. endeavor in good faith to work with other public entities, such as special purpose
209 districts, to gather and include within the capital facilities element the information
210 required for such facilities. A good faith effort must, at a minimum, include consulting the
211 public entity's capital facility or system plans and emailing and calling the staff of the
212 public entity.
213

214 Publicly accessible information about these facilities and associated future planning is limited,
215 as they are owned and operated by non-County entities and the Growth Management Act does
216 not require those entities to plan in accordance with the Act. Summarized below is information
217 about these facilities based on County research of available online information and inquiries
218 with applicable entities as of October 2023. Listed plans are adopted by reference and available

¹⁴ Medic One/Emergency Medical Services 2020-2025 Strategic Plan; Ordinance 18932, Attachment A
[\[LINK\]](#)

¹⁵ 2021 Annual Bridge Report [\[LINK\]](#)

¹⁶ Strategic Plan for Road Services 2014 Update, Motion 14190, Attachment A [\[LINK\]](#)

¹⁷ 2022 Transportation Concurrency Update Report [\[LINK\]](#)

¹⁸ King County Metro Strategic Plan for Public Transportation 2021-2031, King County Metro Service
Guidelines Ordinance, King County Metro Long-Range Plan: Metro Connects, Ordinance 19367,
Attachments A, B, and C [\[LINK\]](#)

¹⁹ 2022 System Evaluation, Motion 16312 [\[LINK\]](#)

219 upon request.

220

221 **a. Drinking Water Supply**

222 Public water systems are managed by: homeowners; private, non-profit organizations and
223 corporations such as homeowners' associations; private, for-profit companies; and municipal
224 governments and water/sewer districts. Given that the Growth Management Act requires the
225 capital facilities element to address those facilities owned by public entities, this subsection
226 focuses on water services provided by municipal governments and water/sewer districts.

227

228 King County is not a water utility and does not supply potable water to residents. Instead, King
229 County has certain regulatory roles for Group A and Group B water systems²⁰ that operate in
230 unincorporated King County, such as reviewing Water System Plans subject to Washington
231 State Department of Health's approval, approving Group A system expansion plans in
232 unincorporated King County, and regulating franchise agreements for use of King County
233 rights-of-way. The public water utilities serving unincorporated King County are as follows.

234

235 **i. Public Water Utilities Serving Unincorporated King County**

236

Public Water Utility	Capital Facility Documents
Ames Lake Water Association Inc.	Ames Lake Water Association 2018 Water System Plan
Auburn, City of	City of Auburn Comprehensive Water Plan
Bellevue, City of	City of Bellevue Water System Plan (Volumes 1-4)
Black Diamond, City of	City of Black Diamond Water System Comprehensive Plan
Carnation, City of	2015 Comprehensive Water System Plan, City of Carnation - Final
Cedar River Water & Sewer District	2016 Comprehensive Plan Update Water and Sewer Systems
Coal Creek Utility District	Coal Creek Utility District 2013 Water & Sewer System Plan
Covington Water District	Covington Water District Water System Plan May, 2016 FINAL
Dockton Water Association	Small Water System Management Program, Dockton Water Association
Duvall, City of	City of Duvall Comprehensive Water System Plan November 2021
Edgehill Water Association	Edgehill Water Association Small Water System Management Plan
Enumclaw, City of	City of Enumclaw Comprehensive Water System Plan Final October 2013
Fall City Water District #127	2016 Water System Plan for Fall City Water District
Foothills Water Association	Foothills Water Association Comprehensive Water System Plan November 1998
Highline Water District	Highline Water District Water System Plan August, 2016 Final
Issaquah, City of	City of Issaquah 2018 Water System Plan
Kent, City of	Kent Water System Plan 2019

²⁰ Group A systems generally serve more than 15 connections; Group B systems generally serve 2-14 connections.

Public Water Utility	Capital Facility Documents
King County Water District 19	Water District 19 Water System Plan
King County Water District 20	King County Water District No. 20 Comprehensive Water System Plan Update - Approved April 2012
King County Water District 90	King County Water District No. 90 2015 Comprehensive Water System Plan
King County Water District 111	Lake Meridian Water District 2023 Water Comprehensive Plan
King County Water District 119	Water System Plan King County Water District No. 119
King County Water District 123	Water System Plan for King County Water District 123
King County Water District 125	2016 Water System Plan , Water District #125
Kirkland, City of	City of Kirkland Comprehensive Water System Plan August 2014, Revised March 2015
Lakehaven Water and Sewer District	Lakehaven Utility District Water System Plan Update Final April 2015
Lake Forest Park Water District	Lake Forest Park Water District Comprehensive Water System Plan 2015
Mirrormont	Washington Water Service Company Mirrormont Water System ID#55250 1 King County Part B - Individual Water System Plan
North Bend, City of	City of North Bend Water System Plan
NE Sammamish Sewer & Water District	Northeast Sammamish Sewer and Water District Water System Plan
Redmond, City of	City of Redmond 2011 Water System Plan
Renton, City of	City of Renton Water System Plan Final May 2021
River Bend Homesites Association Inc.	River Bend SWSMP
Sallal Water Association Inc.	Sallal Water System Plan Sept 2020
Sammamish Plateau Water & Sewer District	Sammamish Plateau Water & Sewer District 2018 Water Comprehensive Plan December 2018 Revised October 2019
Seattle, City of	Seattle Public Utilities 2019 Water System Plan Revised Final August 2019
Skyway Water & Sewer	Skyway Water & Sewer District 2013 Comprehensive Plan Water & Sewer Systems
Snoqualmie, City of	City of Snoqualmie Water System Plan
Snoqualmie Pass Utility District	Snoqualmie Pass Utility District Water System Plan
Soos Creek Water & Sewer District	Soos Creek Water and Sewer District Water Comprehensive Plan 2012
Union Hill Water Association Inc.	Union Hill Water Association Comprehensive Water System Plan Final 2013
Westside Water Association	Small Water System Management Program Westside Water Association
Woodinville Water District	Woodinville Water District Comprehensive Water System Plan Final March 2019

237

238 **ii. Public Water System Coordination Act**

239 Chapter 70.116 RCW, the Public Water System Coordination Act, was used by King County in

240 the past to establish four planning areas -- East King County, Skyway, South King County, and
241 Vashon. King County, the Washington State Department of Health, and water utilities have
242 developed a Coordinated Water System Plan for each of these four areas. The plans establish
243 service areas, provide water demand forecasts, and discuss minimum water system design
244 requirements. Water system plans prepared by individual water utilities, such as those listed in
245 the table above, must be consistent with all applicable Coordinated Water System Plans.
246

247 **b. Sanitary Sewer**

248 King County requires sewer utilities to prepare sewer comprehensive plans if they are located in
249 King County and discharge to King County's system or serve unincorporated areas. A new
250 sewer comprehensive plan is required every six years. The public sewer utilities serving
251 unincorporated King County are as follows.
252
253

254 ***i. Public Sewer Utilities Serving Unincorporated King County***

Public Sewer Utility	Capital Facilities Documents
Auburn, City of	2016 Comprehensive Sewer Plan (General Sewer Plan)
Bellevue, City of	City of Bellevue 2013 Wastewater System Plan, Volume 1 and Volume 2
Black Diamond, City of	City of Black Diamond General Sewer Plan
Bothell, City of	City of Bothell Wastewater Comprehensive Plan Update
Carnation, City of	*
Cedar River Water and Sewer District	2016 Comprehensive Plan Update Water & Sewer Systems
Coal Creek Utility District	Coal Creek Utility District 2013 Water and Sewer System Plan
Duvall, City of	City of Duvall Wastewater Facility Plan
Issaquah, City of	City of Issaquah Sewer System Plan Update Year 2002
Kent, City of	2000 Comprehensive Sewer Plan
Kirkland, City of	City of Kirkland General Sewer Plan
Lakehaven Utility District	Lakehaven Water & Sewer District 2015 Comprehensive Wastewater System Plan
Mercer Island, City of	City of Mercer Island General Sewer Plan
Midway Sewer District	Midway Sewer District General Sewer Plan
NE Sammamish Sewer & Water District	Northeast Sammamish Sewer & Water District General Sewer Plan
North Bend, City of	City of North Bend Wastewater System Facilities Plan Revision
Northshore Utility District	Northshore Utility District Wastewater System Plan
Redmond, City of	City of Redmond General Wastewater Plan Update
Renton, City of	City of Renton Long-Range Wastewater Management Plan

Public Sewer Utility	Capital Facilities Documents
Sammamish Plateau Water & Sewer District	Sammamish Plateau Water Wastewater Comprehensive Plan Update and General Sewer Plan
Skykomish, City of	Town of Skykomish General Sewer and Facilities Plan
Skyway Water and Sewer District	Skyway Water & Sewer District 2013 Comprehensive Plan Water & Sewer Systems
Snoqualmie, City of	City of Snoqualmie General Sewer Plan
Snoqualmie Pass Utility District	Snoqualmie Pass Utility District Wastewater Facilities Plan Update
Soos Creek Water and Sewer District	Soos Creek Water and Sewer District Sewer Comprehensive Plan 2013
Southwest Suburban Sewer District	*
Stevens Pass Sewer District	*
Tukwila, City of	City of Tukwila Comprehensive Sanitary Sewer Plan Final February 2014
Valley View Sewer District	2011 Comprehensive Sewer System Plan
Vashon Sewer District	Vashon Sewer District Comprehensive Sewer Plan
Woodinville Water District	Woodinville Water District 2022 General Sewer Plan Update

* Emailed and called but no documents provided as of October 2023

256
257
258
259
260
261
262
263
264
265
266
267
268

b. Schools

King County Code includes a method for school districts with territory in unincorporated King County to request the collection of an impact fee from new residential developments when the district is experiencing a lack of capacity due to growth. Districts must adopt a six-year capital facilities plan that provides for new capacity and submit the plan to King County for adoption as part of the capital facilities element of the King County Comprehensive Plan. King County's School Technical Review Committee (STRC) reviews each school district's capital facilities plan, enrollment projections, and standard of service. The STRC also reviews the district's overall capacity over a six-year time frame to ensure consistency with the King County Comprehensive Plan, adopted community plans, and the district's calculation and rationale for proposed impact fees.

269
270
271
272
273
274
275
276
277
278

School district capital facility plans are adopted annually by King County. Of the 20 districts in the County, 13 have plans currently adopted by the County. Because capital facilities plans are not mandatory for special districts under the Growth Management Act, King County has no way of compelling a school district to prepare a plan unless they intend to collect a school impact fee. The Seattle, Mercer Island and Tukwila school districts do not have any unincorporated territory and so are not eligible to collect school impact fees from King County. The Bellevue, Shoreline, Skykomish, and Vashon school districts have territory in unincorporated King County but have adequate capacity in existing facilities and therefore are not eligible for impact fees and are not required to submit a plan to King County.

279
280
281
282
283

In general, school districts obtain funds for new construction and improvements to existing facilities from voter-approved bonds. School districts may also qualify for state matching funds for new construction and for the renovation of capital facilities based on a formula that considers a number of factors, including the assessed valuation of the property within the

284 particular school district. In addition, school districts have the authority to request one-year
285 capital project levies and six-year renovation and modernization levies, with voter approval.
286 Operating funds come from the state for "basic education." Programs that are not funded by
287 the state are funded through maintenance and operation levies.
288

289 More information can be found in the capital facility plans for the following school districts, as
290 well as the requirements in King County Code Chapter 21A.28.
291

292 ***i. Public Schools Serving Unincorporated King County***

School District	Capital Facilities Documents*
Auburn School District No. 408	Auburn School District No. 408 Capital Facilities Plan 2022 through 2028
Enumclaw School District No. 216	Enumclaw School District No. 216 Capital Facilities Plan 2022-2027
Federal Way School District No. 210	Federal Way Public Schools Capital Facilities Plan 2023
Fife School District No. 417	Fife School District No. 417 Capital Facilities Plan 2022-2028
Highline School District No. 401	Highline School District No. 401 Capital Facilities Plan 2022-2027
Issaquah School District No. 411	Issaquah School District No. 411 2022 Capital Facilities Plan
Kent School District No. 415	Kent School District No. 415 Six-Year Capital Facilities Plan 2021-2022 through 2027-2028
Lake Washington School District No. 414	Lake Washington School District No. 414 Six-Year Capital Facilities Plan 2022-2027
Northshore School District No. 417	Northshore School District No. 417 Capital Facilities Plan 2022-28
Renton School District No. 403	Renton School District No. 403 2022 Capital Facilities Plan
Riverview School District No. 407	Riverview School District No. 407 2022 Capital Facilities Plan
Snoqualmie Valley School District No. 410	Snoqualmie Valley School District No. 410 Capital Facilities Plan 2022
Tahoma School District No. 409	Tahoma School District No. 409 Capital Facilities Plan 2022-2027

293 * As of October 2023; school capital facility plans are adopted annually by the King County Council as
294 subelements of the capital facilities element of the Comprehensive Plan
295

296 **c. Fire Protection**

297 Fire protection districts are responsible for delivering emergency services, including fire
298 protection and emergency medical services countywide. They use response times as the level
299 of service standard for judging when new facilities are needed. The majority of fire districts fund
300 capital projects within their current year operating budget, or request bond issues for large
301 capital projects.
302

303 ***i. Fire Districts Serving Unincorporated King County***

Fire District	Capital Facilities Documents
King County Fire District #27	*
Duvall #45	*

Fire District	Capital Facilities Documents
Eastside Fire & Rescue	CFMF 2023-2024 Scheduled Maintenance Expenditures
Enumclaw Fire District	*
King County Fire District #20	King County Fire District 20 2023 Operating Budget
King County Fire District #27	*
King County Fire District #47	*
King County Fire District #50	*
King County Fire District #51	*
Mountain View Fire & Rescue	*
Puget Sound Regional Fire Authority	King County Fire District 43 Capital Plan Executive Summary
Redmond Fire District	*
Renton Regional Fire Authority	Renton Regional Fire Authority Strategic Plan 2021-2025
South King Fire & Rescue	*
Valley Regional Fire Authority	Valley Regional Fire Authority 2021-2027 Capital Facilities Plan
Vashon Island Fire & Rescue	Vashon Fire - Fire District Evaluation; Community Based-Fire and Emergency Medical Services Strategic Plan 2023-2029

304 * Emailed and called but no documents provided as of October 2023

305
306 Locations of the service areas of these districts can be found in King County's iMap GIS
307 database.

308
309 **d. Libraries**

310 Libraries in King County are maintained by the King County Library System (KCLS), which is
311 not part of King County government. KCLS serves residents in both incorporated and
312 unincorporated areas. The system of capital facilities owned and operated by KCLS consists of
313 community libraries, as shown in Attachment A; the following are those in unincorporated King
314 County. KCLS's plans for and financing of capital facilities is detailed in their budget and
315 associated Capital Investment Program.²¹ As of September 2023, KCLS said that they had no
316 plans for new locations or expansions.²²

317
318 **i. KCLS Facilities in Unincorporated King County**

Fairwood
Fall City
Greenbridge
Redmond Ridge
Skyway
Vashon
White Center
Woodinville

319

²¹ KCLS Budget Fiscal Year 2023 [\[LINK\]](#)

²² KCLS email; 9/14/2023

320 **e. Other Parks**

321 Parks services in King County are provided by the King County Parks Division of the
322 Department of Natural Resources and Parks, the State of Washington and the federal
323 government. Public park districts also serve unincorporated King County. The parks land
324 offered by these entities help provide green infrastructure as defined by the Growth
325 Management Act.
326

327 ***i. Public Park Districts Serving Unincorporated King County***

Park District	Capital Facility Documents
Fall City Metropolitan Park District	*
Northshore Park and Recreation Service Area	*
Si View Metropolitan Park District	Si View Metro Parks Comprehensive Parks Plan; Si View Metropolitan Park District 2023 Budget; Potential Parkland Acquisition Target Areas
Tukwila Pool Metropolitan Park District	*
Vashon Park District	Vashon Park District Strategic Plan 2018-2024

* Emailed and called but no documents provided as of October 2023

328
329

330 **II. Utilities**

331

332 **A. Introduction**

333 The utilities element of the King County Comprehensive Plan is comprised of two parts:
334 Chapter 9: Services, Facilities and Utilities and this Appendix A. Chapter 9: Services, Facilities
335 and Utilities establishes policy regarding planning for and siting of utilities to serve the needs of
336 existing and new residents. This section of Appendix A consists of a review of public electrical,
337 natural gas, and telecommunications utility systems.
338

338

339 **B. State Requirements**

340

341 The Growth Management Act (RCW 36.70A.070 and WAC 365-196-420) requires that
342 comprehensive plans include a utilities element consisting of the general location, proposed
343 location, and capacity of all existing and proposed utilities including, but not limited to, electrical,
344 telecommunications, and natural gas systems.
345

345

346 **C. Utilities Facilities Inventories**

347

348 Electric, gas, and telecommunications utilities facilities are not provided by King County.
349 Instead, they are a mix of private and non-County public ownership, subject to varying levels of
350 regulatory oversight from local, state, and federal agencies. King County's local oversight is
351 limited to permit review of proposed utility development projects as guided in the
352 Comprehensive Plan and as outlined in the King County Code. Local regulation of these
353 facilities is often preempted by state or federal law.
354

354

355 For facilities provided by other public entities, RCW 36.70A.070(3) requires the County to:

356

1. identify all public entities that own capital facilities; and
2. endeavor in good faith to work with other public entities, such as special purpose districts, to gather and include within the capital facilities element the information

357

358

359 required for such facilities. A good faith effort must, at a minimum, include consulting the
360 public entity's capital facility or system plans and emailing and calling the staff of the
361 public entity.
362

363 Publicly accessible information about these facilities and associated future planning is limited,
364 as they are owned and operated by non-County entities and the Growth Management Act does
365 not require those entities to plan in accordance with the Act. Summarized below is information
366 about these facilities is based on County research of online information and inquiries with
367 applicable entities. Additionally, WAC 365-196-420 encourages that information about
368 proposed utilities include those awaiting approval as of the date of the applicable
369 Comprehensive Plan update. As such, information about pending King County permits for
370 utilities facilities in the unincorporated area is also provided below.
371

372 **1. Electric**

373 Electric utilities in King County share what is described as an "integrated regional electric
374 system." Regardless of ownership, all elements of the system are designed and operated to
375 work in a complementary manner. The system includes transmission lines, substations, and
376 generation facilities. Current facilities and services are provided by Bonneville Power
377 Administration, Puget Sound Energy, and Tanner Electric Cooperative.
378

379 Locations of Bonneville Power Administration Transmission Assets are available in ArcGIS
380 Online.²³ According to Bonneville Power Administration, publicly available detailed information
381 about the current and future locations of this infrastructure is unavailable due to security
382 concerns.
383

384 As of 2022, Puget Sound Energy (PSE) had 2,840 miles of overhead wire, 6,187 miles of
385 underground cable, and 155 substations countywide; PSE' service area is available online.^{24,25}
386 PSE's Integrated Resource Plan provides a 20-year view of Puget Sound Energy's energy
387 resource needs, and the Clean Energy Implementation Plan outlines how they are planning to
388 achieve Clean Energy Transformation Act (CETA) benchmarks. The 2022 PSE Plan identifies
389 new transmission facilities and facility replacements or upgrades planned by PSE over the
390 ensuing ten years.²⁶ According to PSE, publicly available detailed information about the current
391 and future locations of this infrastructure is unavailable due to security concerns.
392

393 Tanner Electric Cooperative serves Ames Lake and greater North Bend and Snoqualmie
394 communities.²⁷ System information and circuit line data provided by Tanner Electric is included
395 in Attachment A to this appendix. According to Tanner Electric Cooperative, more detailed
396 information about the current and future locations of this infrastructure is unavailable due to
397 security concerns.
398
399

400 Additional geospatial information about locations of electric utilities facilities can be found in the
401 Transmission Lines, Substations, and Power Plants layers of the Homeland Infrastructure
402 Foundation-Level Data GeoPlatform in ArcGIS Online.²⁸

²³ Transmission Assets – arcgis.com; accessed 4/4/23 [\[LINK\]](#)

²⁴ 2022 Puget Sound Energy Community Profile – King County; Puget Sound Energy online; accessed 4/4/23. [\[LINK\]](#)

²⁵ Service Area Map – Puget Sound Energy; accessed 4/4/23 [\[LINK\]](#)

²⁶ 2022 PSE Plan [\[LINK\]](#)

²⁷ BPA Utility Customer Service Areas - arcgis.com; accessed 4/4/23 [\[LINK\]](#); Service Territory Maps – Tanner Electric Cooperative; accessed 4/4/23 [\[LINK\]](#)

²⁸ HIFLD Open Data – arcgis.com; accessed 4/4/23 [\[LINK\]](#)

403
404 As of April 1, 2023, there are no pending King County permits for proposed electric utilities
405 facilities.
406

407 **2. Natural Gas**

408 Puget Sound Energy is the major supplier of natural gas to King County. The City of Enumclaw
409 operates a local distribution system that serves local customers in unincorporated King
410 County.²⁹

411
412 As of 2022, PSE has 6,876 miles of gas main countywide.³⁰ Their Integrated Resource Plan
413 provides a 20-year view of PSE's energy resource needs, and the Clean Energy
414 Implementation Plan outlines how they are planning to achieve Clean Energy Transformation
415 Act (CETA) benchmarks. According to PSE, more detailed information about the current and
416 future locations of this infrastructure is unavailable due to security concerns.

417
418 Additional geospatial information about locations of natural gas facilities can be found in the Oil
419 and Natural Gas Wells and Natural Gas Pipelines layers in the Homeland Infrastructure
420 Foundation-Level Data GeoPlatform in ArcGIS Online.³¹

421
422 As of April 1, 2023, there are no pending King County permits for proposed natural gas utilities
423 facilities.
424

425 **3. Telecommunications**

426 Various companies provide telecommunications services throughout unincorporated King
427 County, including voice, data, and video on various mediums such as wire, fiber optic, or radio
428 wave. Effective telecommunications services promote and enhance individual information
429 exchange, contribute to a robust regional economy, and afford numerous public services,
430 including delivery of emergency services, education, and opportunities for community
431 involvement.

432
433 Telecommunication networks are privately owned, publicly regulated entities that are driven by
434 market forces more than statutory requirements. The County has limited control of
435 telecommunication service providers. However, its regulation of rights-of-way and associated
436 franchise agreements with those companies help ensure technical quality, protect customer
437 rights, and support public services.

438
439 Geospatial information about locations of telecommunications facilities can be found in the FM
440 Transmission Towers, Cellular Towers, Microwave Service Towers, Paging Transmission
441 Towers, Land Mobile Commercial Transmission Towers, AM Transmission Towers, Antenna
442 Structure Registrars, TV Analog Station Transmitters, and TV Digital Station Transmitters layers
443 of the Homeland Infrastructure Foundation-Level Data GeoPlatform in ArcGIS Online.³² King
444 County has also mapped locations of C3 Fiber and INET Fiber.³³
445

²⁹ Emailed and called but no documents provided as of October 2023

³⁰ 2022 Puget Sound Energy Community Profile – King County; Puget Sound Energy online; accessed 4/4/23. [\[LINK\]](#)

³¹ HIFLD Open Data – arcgis.com; accessed 4/4/23 [\[LINK\]](#)

³² IBID

³³ Map of Where Internet Fiber is Running Through King County [\[LINK\]](#)

446 In 2020, King County completed a Broadband Access Study³⁴ that evaluated the availability
447 and accessibility of Broadband internet services for King County residents. The study identifies
448 incorporated and unincorporated areas served, unserved, or underserved by Broadband
449 internet services.

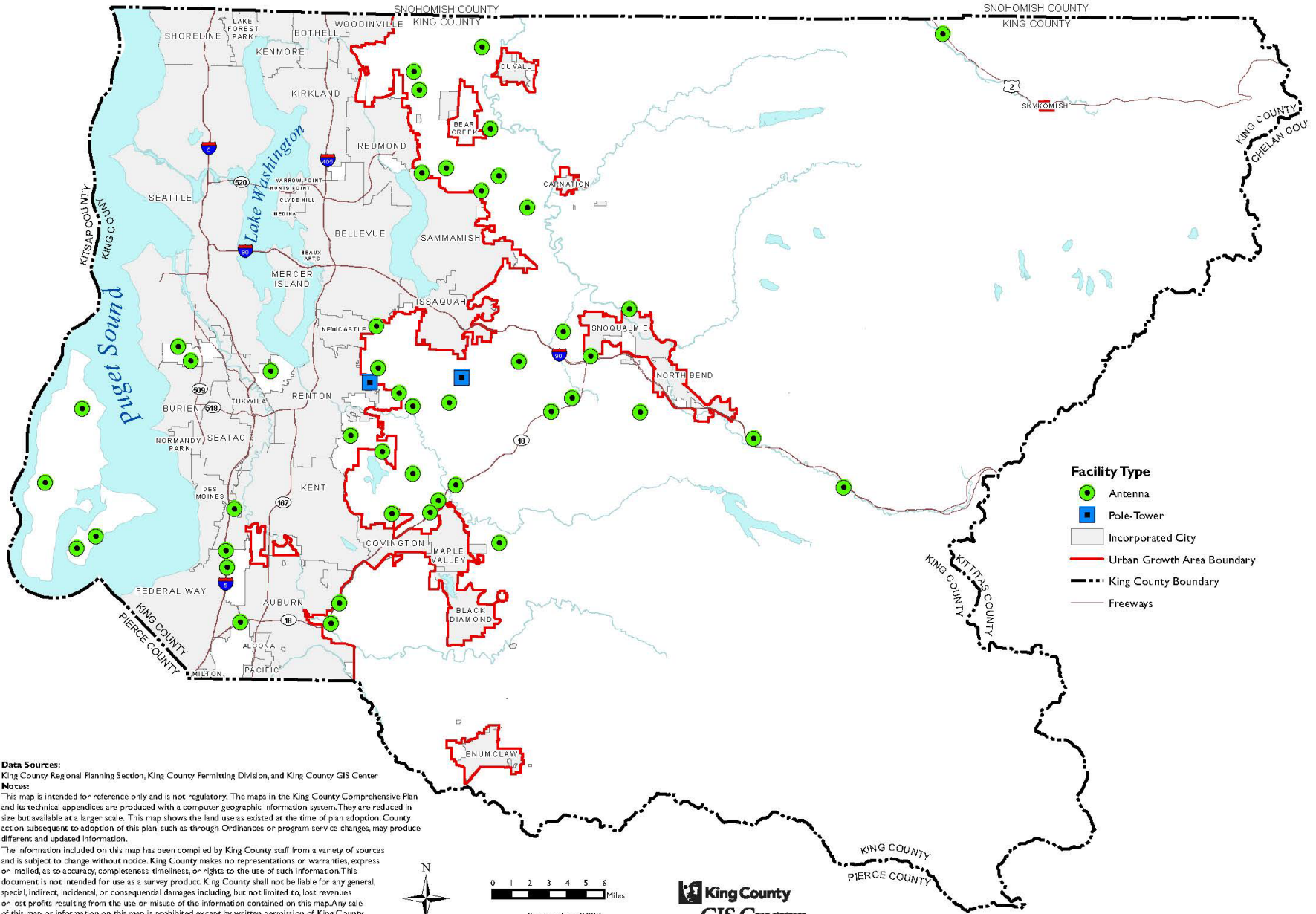
450
451 As of April 1, 2023, there are 53 pending King County permits for proposed telecommunications
452 facilities. The general vicinity of their proposed locations are as follows.³⁵

453
454

³⁴ 2020 Broadband Access Study [\[LINK\]](#)

³⁵ Because the of the scale of the map, some locations have more than one antenna proposed but only one dot on the map.

PENDING UNINCORPORATED KING COUNTY TELECOMMUNICATIONS FACILITIES



Data Sources:
 King County Regional Planning Section, King County Permitting Division, and King County GIS Center

Notes:
 This map is intended for reference only and is not regulatory. The maps in the King County Comprehensive Plan and its technical appendices are produced with a computer geographic information system. They are reduced in size but available at a larger scale. This map shows the land use as existed at the time of plan adoption. County action subsequent to adoption of this plan, such as through Ordinances or program service changes, may produce different and updated information.

The information included on this map has been compiled by King County staff from a variety of sources and is subject to change without notice. King County makes no representations or warranties, express or implied, as to accuracy, completeness, timeliness, or rights to the use of such information. This document is not intended for use as a survey product. King County shall not be liable for any general, special, indirect, incidental, or consequential damages including, but not limited to, lost revenues or lost profits resulting from the use or misuse of the information contained on this map. Any sale of this map or information on this map is prohibited except by written permission of King County.
 Date: 9/27/2023
 F:\KCCP2024\projects\CellTowerPermits\apps\cell_tower_permits_layout.mxd

456 **Attachment A**

457 **Supplemental materials adopted for the purposes of this appendix**

458

459 **List of KCLS Facilities³⁶**

460

Library Name	Square Feet	Region	Address		
			Street	City	Zip code
Algona-Pacific	5,250	Rainier	255 Ellingson Rd	Pacific	98047
Auburn	20,000	Rainier	1102 Auburn Way S	Auburn	98002
Bellevue	80,000	Lakeview	1111 110th Ave NE	Bellevue	98004
Black Diamond	5,000	Rainier	24707 Roberts Dr	Black Diamond	98010
Bothell	22,500	Alder	18215 98th Ave NE	Bothell	98011
Boulevard Park	6,536	Olympic	12015 Roseberg Ave S	Burien	98168
Burien	32,000	Olympic	400 SW 152nd St Ste 100	Burien	98166
Carnation	5,000	Glacier	4804 Tolt Ave	Carnation	98014
Children & Family Justice Center		Riverview			
Covington	23,000	Rainier	27100 164th Ave SE	Covington	98042
Crossroads	3,740	Lakeview	15600 NE 8th Street, Suite K-11	Bellevue	98008
Des Moines	10,230	Soundview	21620 11th Avenue S	Des Moines	98198
Duvall	8,000	Glacier	15508 Main St NE	Duvall	98019
Enumclaw	10,541	Rainier	1700 1st St	Enumclaw	98022
Fairwood	20,000	Cedar	17009 140th Ave SE	Renton	98058
Fall City	5,000	Cascade	33415 SE 42nd Place	Fall City	98024
Federal Way	34,500	Soundview	34200 1st Way S	Federal Way	98003
Federal Way 320th	15,000	Soundview	848 S 320th St	Federal Way	98003

³⁶ Provided by KCLS on 9/14/23

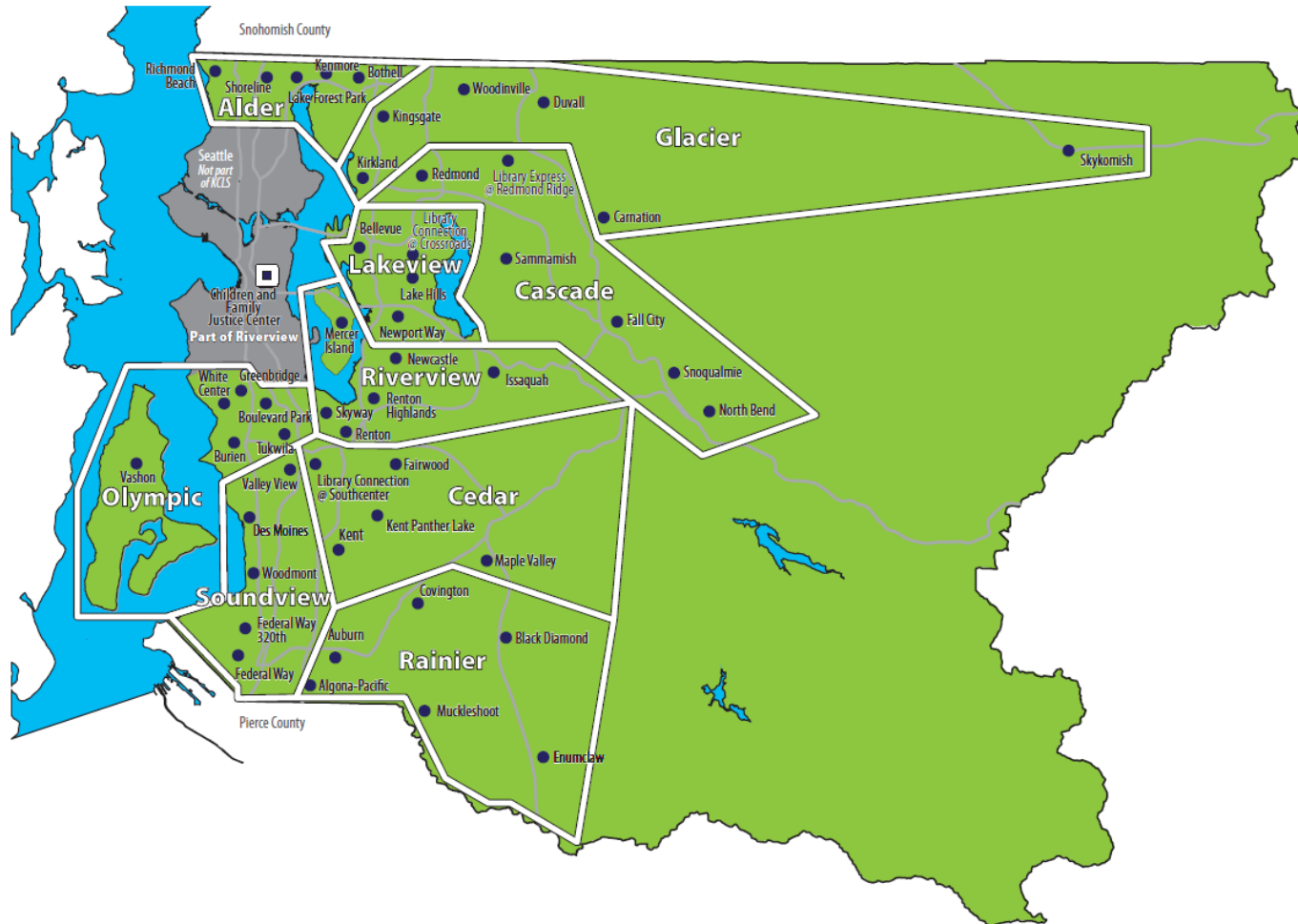
Library Name	Square Feet	Region	Address		
			Street	City	Zip code
Greenbridge	2,300	Olympic	9720 8th Ave SW	Seattle	98106
Issaquah	15,000	Riverview	10 W. Sunset Way	Issaquah	98027
Kenmore	10,000	Alder	6531 NE 181st St	Kenmore	98028
Kent	22,600	Cedar	212 2nd Ave N	Kent	98032
Kent Panther Lake	5,300	Cedar	20500 108TH AVE SE	Kent	98031
Kingsgate	10,235	Glacier	12315 NE 143rd	Kirkland	98034
Kirkland	19,500	Glacier	308 Kirkland Ave	Kirkland	98033
Lake Forest Park	5,840	Alder	17171 Bothell Way NE	Seattle	98155
Lake Hills	10,000	Lakeview	15590 Lake Hills Blvd	Bellevue	98007
Maple Valley	10,000	Cedar	21844 SE 248th Street	Maple Valley	98038
Mercer Island	14,886	Riverview	4400 88th Ave SE	Mercer Island	98040
Muckleshoot	6,000	Rainier	39917 Auburn Enumclaw Rd SE	Auburn	98092
Newcastle	11,000	Riverview	12901 Newcastle Way	Newcastle	98056
Newport Way	8,690	Lakeview	14250 SE Newport Way	Bellevue	98006
North Bend	9,853	Cascade	115 E 4th	North Bend	98045
Preston	35,467		8114 304th Ave SE / PO Box 398/ 8180 304th Ave SE	Preston	98050
Redmond	30,000	Cascade	15990 NE 85th St.	Redmond	98052
Redmond Ridge	300	Cascade	10735 Cedar Park Crescent Rd NE	Redmond	98053
Renton	19,500	Riverview	100 Mill Ave S	Renton	98057
Renton Highlands	15,000	Riverview	2801 NE 10th St	Renton	98056
Richmond Beach	5,250	Alder	19601 21st Ave NW	Shoreline	98177
Sammamish	19,500	Cascade	825 228th Ave SE	Sammamish	98074
Shoreline	20,954	Alder	345 NE 175th	Shoreline	98155
Skykomish	1,042	Glacier	100 5th Street	Skykomish	98288
Skyway	8,000	Riverview	12601 76th Ave S	Seattle	98178
Snoqualmie	6,000	Cascade	7824 Center Blvd SE	Snoqualmie	98065
Southcenter	5,085	Cedar	1386 Southcenter Mall	Tukwila	98188

Library Name	Square Feet	Region	Address		
			Street	City	Zip code
Tukwila	10,000	Olympic	14380 Tukwila International Boulevard	Tukwila	98168-4164
Valley View	6,558	Soundview	17850 Military Rd S	Seattle	98188
Vashon	10,000	Olympic	17210 Vashon Hwy SW	Vashon Island	98070
White Center	10,000	Olympic	1409 SW 107th St	Seattle	98146
Woodinville	15,000	Glacier	17105 Avondale Road NE	Woodinville	98072
Woodmont	9,850	Soundview	26809 Pacific Highway South	Des Moines	98198

461
462

463 **Map of KCLS Facilities³⁷**

464



465

³⁷ Provided by KCLS on 9/14/23

466 **Tanner Electric System Information and Circuit Line Data**³⁸

Tanner Electric Cooperative

System Information - April 2023

North Bend

	Primary Miles	104.69
Service Territory Totals	Total Miles	154.91
Overhead	20.44	13.19%
Underground	134.47	86.81%

Circuit 1

Primary Overhead	0.32
Secondary Overhead	0.06
Primary Underground	20.5
Secondary Underground	7.93

Circuit 2

Primary Overhead	5.45
Secondary Overhead	1.7
Primary Underground	43.77
Secondary Underground	20.99

Circuit 3

Primary Overhead	10.45
Secondary Overhead	2.46
Primary Underground	20.97
Secondary Underground	17

Circuit 4

Primary Overhead	0
Secondary Overhead	0
Primary Underground	3.23
Secondary Underground	0.08

Poles

794

Ames Lake

	Primary Miles	60.28
Service Territory Totals	Total Miles	101.94
Overhead	14.32	14.05%
Underground	87.62	85.95%

East Overhead

Primary Overhead	4.38
Secondary Overhead	2.61
Primary Underground	1.83
Secondary Underground	5.02

East Underground

Primary Overhead	1.68
Secondary Overhead	0.89
Primary Underground	29.99
Secondary Underground	20.33

West Underground

Primary Overhead	3.64
Secondary Overhead	1.12
Primary Underground	18.76
Secondary Underground	11.69

Poles

559

Transmission

2.68

Anderson Island

	Primary Miles	65.44
Service Territory Totals	Total Miles	93.49
Overhead	41.02	43.88%
Underground	52.47	56.12%

Primary Overhead

32.45

Secondary Overhead

8.57

Primary Underground

32.99

Secondary Underground

19.48

Poles

1283

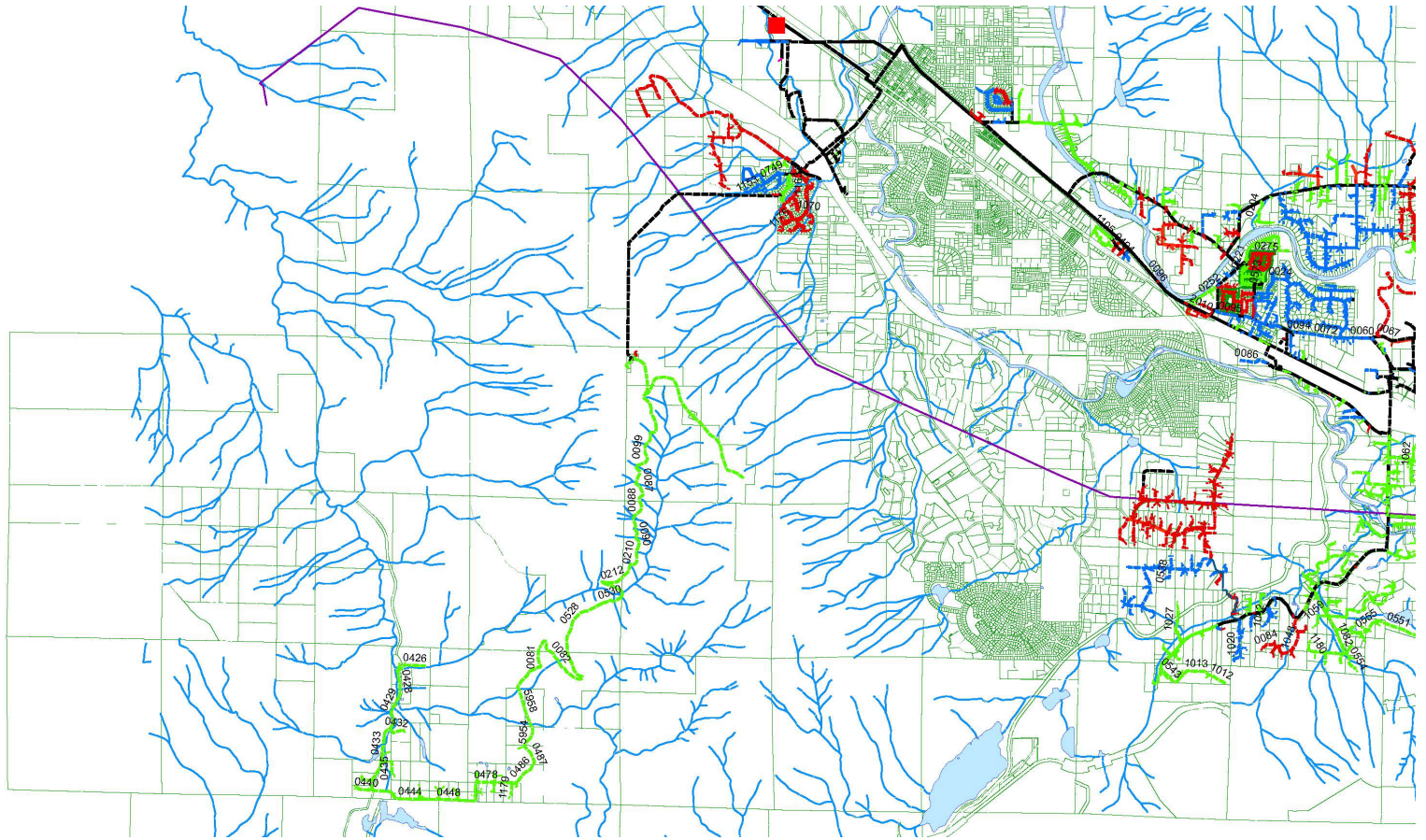
System Total

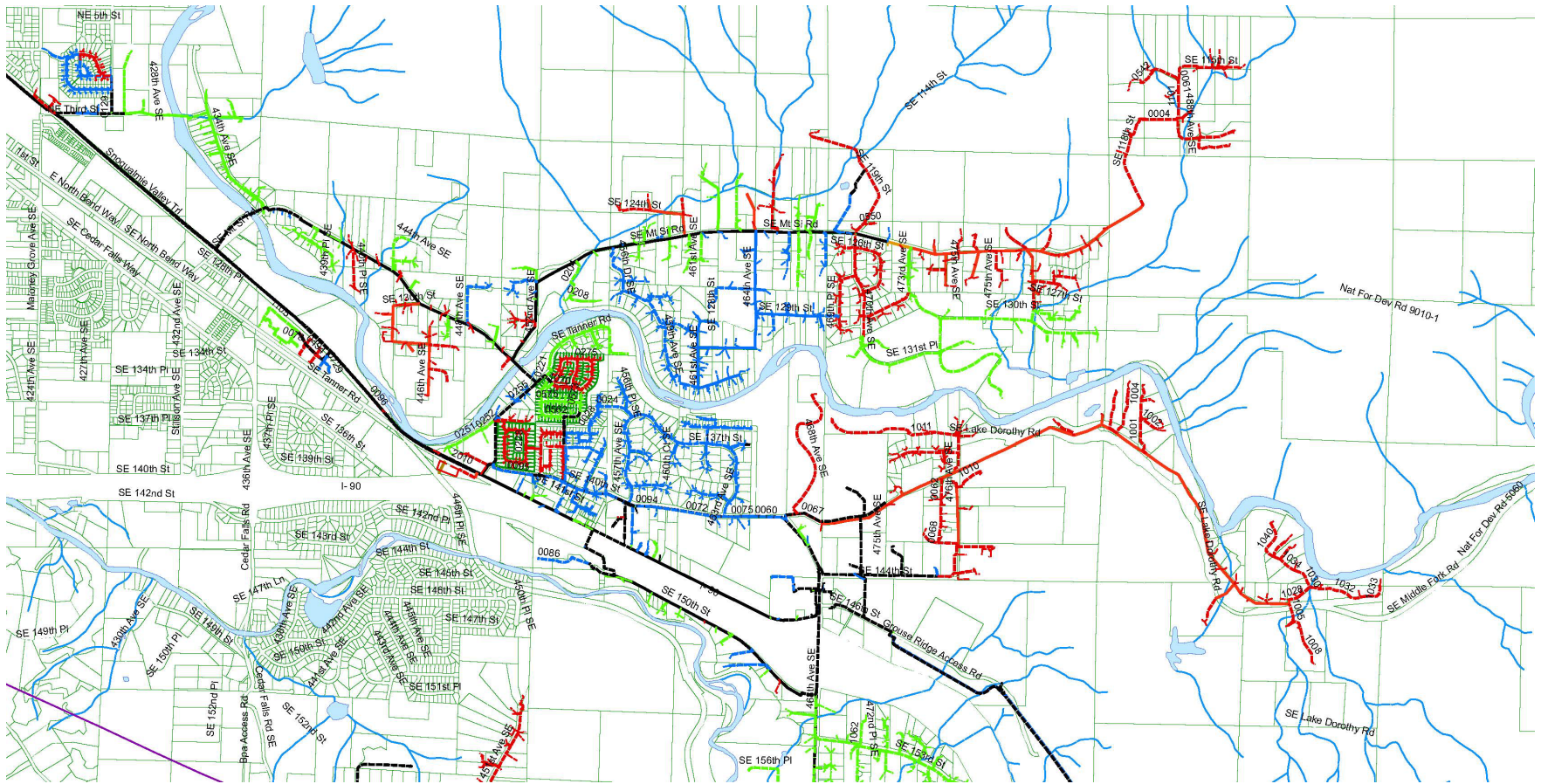
	Primary Miles	230.41
Service Territory Totals	Total Miles	350.34
Overhead	75.78	21.63%
Underground	274.56	78.37%

Poles

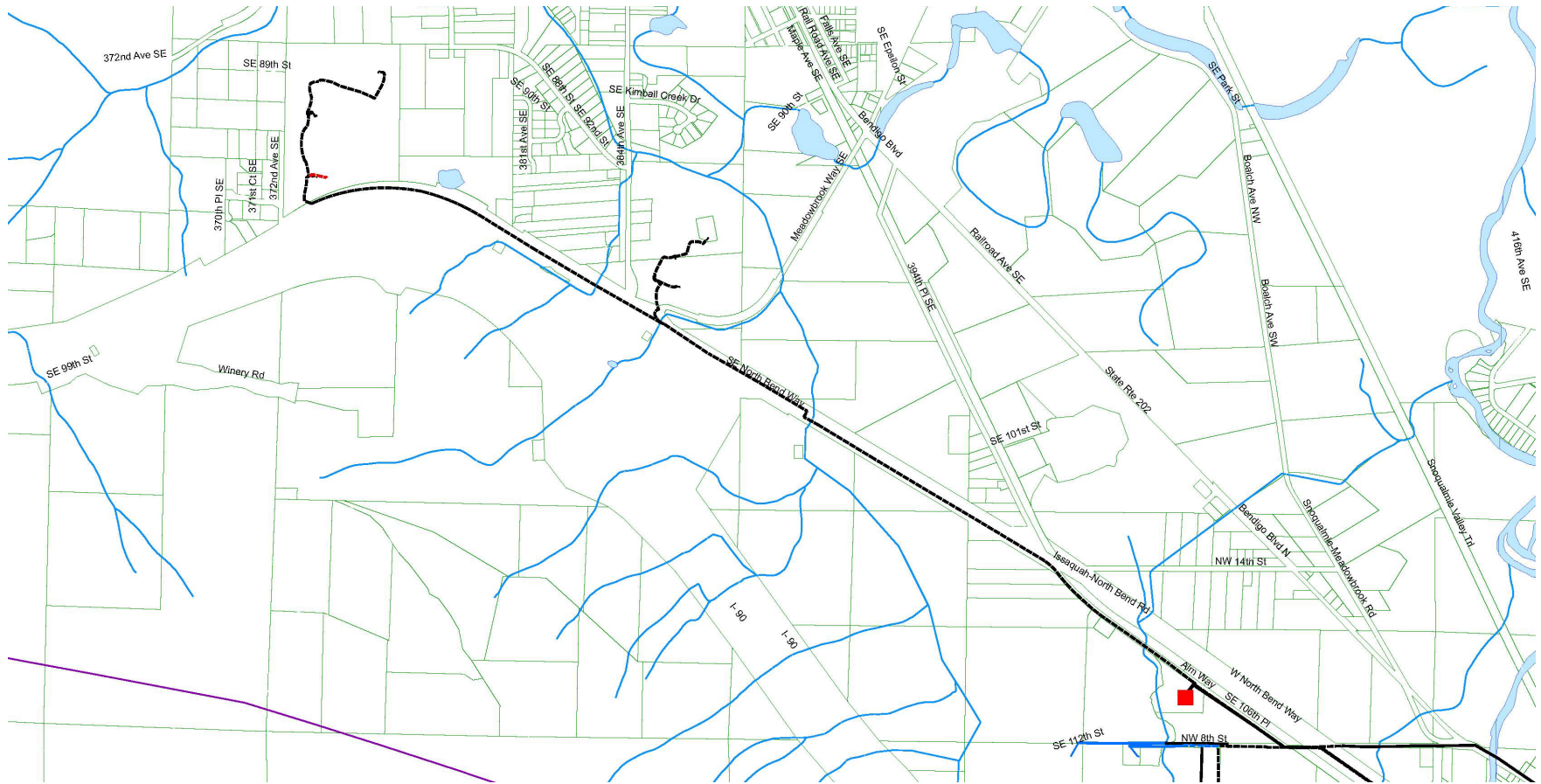
2636

³⁸ Provided by Tanner Electric on 5/1/23





470



471

