

1
2
3
4
5
6
7
8
9
10
11
12
13
14
15
16
17
18
19
20
21
22
23
24
25
26
27
28

APPENDIX A

Capital Facilities and Utilities



King County
June 2024

29
30
31
32
33
34
35
36
37
38
39
40
41
42
43
44
45
46
47
48
49
50
51
52
53
54
55
56
57

Table of Contents

APPENDIX A..... 1

I. Capital Facilities 3

 A. Introduction 3

 B. State Requirements 3

 1. Growth Management Act Goals and Requirements..... 3

 2. King County Countywide Planning Policies 3

 C. Capital Facilities Inventories and Planning 4

 1. Facilities Provided by King County..... 4

 2. Facilities provided by other public entities 6

II. Utilities 11

 A. Introduction 11

 B. State Requirements 12

 C. Utilities Facilities Inventories 12

 1. Electric..... 12

 2. Natural Gas..... 13

 3. Telecommunications 13

Attachment A..... 16

 Supplemental materials adopted for the purposes of this appendix..... 16

58 I. Capital Facilities

59 A. Introduction

60 The capital facilities element of the King County Comprehensive Plan is comprised of two parts: Chapter
61 U9: Services, Facilities and Utilities and this Appendix A. Chapter 9: Services, Facilities and Utilities
62 establishes policy regarding planning for and financing of publicly owned capital facilities to serve the
63 needs of existing and new residents. Together, Chapter 9 and this appendix address how King County
64 should meet its capital facilities responsibilities.
65

66 This section of Appendix A is a review of the current state of planning and financing for public facilities and
67 services in King County. The facilities are organized into two sections: those owned by King County and
68 those owned by other public entities. The development of this appendix was guided by an integrated set
69 of local policies and plans. Listed documents are adopted by reference for the purposes of this appendix.

70 B. State Requirements

71 Chapter 9: Services, Facilities and Utilities and this Appendix, including referenced documents, implement
72 the requirements of the state requirements listed below.

73 1. Growth Management Act Goals and Requirements

74 The Growth Management Act (RCW 36.70A.020) requires that public facilities and services necessary to
75 support development be adequate to serve the development at the time the development is available for
76 occupancy and use, and without decreasing current service levels below established minimum standards.
77

78 The Growth Management Act (RCW 36.70A.070 and WAC 365-196-415) requires that comprehensive plans
79 include a capital facilities plan element consisting of:

- 80 • An inventory of existing capital facilities owned by public entities, showing the locations and capacities
81 of the capital facilities;
- 82 • A forecast of the future needs for such capital facilities;
- 83 • The proposed locations and capacities of expanded or new capital facilities;
- 84 • At least a six-year plan that will finance such capital facilities within projected funding capacities and
85 clearly identifies sources of public money for such purposes; and
- 86 • A requirement to reassess the land use element if probable funding falls short of meeting existing
87 needs and to ensure that the land use element and capital facilities plan element are coordinated and
88 consistent.
89

90 This element must include public "green infrastructure," which are natural assets (including parks and other
91 areas with protected tree canopy) and built facilities in the Urban Growth Area that manage wet weather
92 and that maintain and restore natural hydrology by storing, infiltrating, evapotranspiring, and harvesting
93 and using stormwater.
94

95 WAC 365-196-415 and the Washington State Department of Commerce's Capital Facilities Planning
96 Guidebook provide additional guidance on how to implement this element.

97 2. King County Countywide Planning Policies

98 The Growth Management Act (RCW 36.70A.210) requires counties and cities to coordinate developing and
99 adopting a set of mutually agreed upon planning policies to guide the development of local
100 comprehensive plans. In response to this requirement, elected officials representing the county and the

101 cities and towns of King County joined together to form the King County Growth Management Planning
102 Council and to cooperatively develop and adopt the King County Countywide Planning Policies. Given the
103 important role of special purpose districts in service provision, the Growth Management Planning Council
104 also created seats for representatives of such districts.

105
106 The Countywide Planning Policies provide a framework for developing local jurisdictions' comprehensive
107 plans in King County. This framework provides a mechanism for achieving consistency among
108 comprehensive plans. Jurisdictions' comprehensive plans must reflect the countywide vision for capital
109 facilities planning, including siting of facilities and the timing and phasing of land development in concert
110 with the availability of facilities and services.

111
112 The Countywide Planning Policies adopted by the King County Council and ratified by the cities call for
113 jurisdictions to provide a full range of urban services (PF-1). The countywide development patterns must
114 provide for a sufficient supply of housing, employment, education, recreation, open space and community
115 and social services.

116 C. Capital Facilities Inventories and Planning

117 1. Facilities Provided by King County

118 Chapter 9: Services, Facilities and Utilities requires County facility planning and implementation to occur as
119 part of the King County Real Property Asset Management Plan (RAMP).¹ The RAMP contains an inventory of
120 existing King County general government buildings, their locations and conditions, and provides for long-
121 range facility planning. The RAMP is updated once every four years and includes County administrative,
122 court, law enforcement, jail, public health, and human services facilities.

123
124 Additionally, the Capital Improvement Program of the King County Budget² includes six-year capital facility
125 planning and financing for: emergency medical services; general government services; Harborview Medical
126 Center; King County International Airport; parks, recreation, and open space; public transportation; roads;
127 solid waste; surface water management; and wastewater treatment.

128
129 Combined, these planning processes provide for continuing, cumulative review and updates of all County
130 facility planning and financing consistent with the Comprehensive Plan. Additional facility-specific
131 inventories and planning are as follows.

132 a. Parks, Recreation, and Open Space

133 The King County Open Space Plan: Parks, Trails, and Natural Areas³ is adopted as a functional plan of the
134 Comprehensive Plan. The Open Space Plan includes an inventory and locations of existing King County
135 park, recreation, and open space sites and facilities, as well as information about future growth and
136 financing. This information also addresses applicable green infrastructure provided by urban parks and
137 natural areas. More information can also be found in King County Comprehensive Plan Appendix C2:
138 Regional Trail Needs Report.

139 b. Surface Water Management

140 An inventory of existing King County stormwater facilities can be found in the King County Geographic
141 Information Systems database. Additional information about inventories, locations, conditions, future
142 needs, and financing of stormwater facilities can be found in the Stormwater Management Program Plan⁴
143 and National Pollutant Discharge Elimination System Municipal Stormwater Permit Annual Report.⁵ This
144 information also addresses applicable green infrastructure associated with stormwater management.

¹ 2019 King County Real Property Asset Management Plan, Ordinance 19062, Attachment A [\[LINK\]](#)

² 2023-2024 King County Biennial Budget, Capital Improvement Plan, Ordinance 19546, Attachment A [\[LINK\]](#)

³ King County Open Space Plan: Parks, Trails, and Natural Areas 2022 Update, Ordinance 19501, Attachment A [\[LINK\]](#)

⁴ Stormwater Management Program 2023 Final [\[LINK\]](#)

⁵ 2021 National Pollutant Discharge Elimination System Municipal Stormwater Permit Annual Report [\[LINK\]](#)

145 *c. Solid Waste*

146 The Comprehensive Solid Waste Management Plan⁶ includes an inventory and locations of King County
147 solid waste facilities, as well as information about capacities, levels of service, future needs, and financing.

148 *d. Sanitary Sewer Collection and Treatment*

149 Existing inventories and locations, current capacities, levels of service, future needs, and financing for King
150 County's regional wastewater treatment facilities are available in the King County Regional Wastewater
151 Services Plan,⁷ Combined Sewer Overflow Control Program Update,⁸ Conveyance System Improvement
152 Program Update,⁹ Asset Registry,¹⁰ and Ratepayer Report.¹¹

153 *e. Flood Hazard Management*

154 King County provides flood hazard management services on behalf of the King County Flood Control
155 District. The King County Flood Hazard Management Plan,¹² adopted by both agencies, includes an
156 inventory and locations of existing facilities, current capacities, levels of service, future needs, and financing.
157 More information can also be found in the Flood Control District annual budget and associated Capital
158 Improvement Program.¹³

159 *f. Emergency Medical Services*

160 The King County Emergency Medical Services Division of Public Health – Seattle & King County is
161 responsible for coordinating regional emergency medical services in King County and for developing,
162 implementing, and administering a mobile intensive paramedic care services program in cooperation with
163 King County fire districts, municipal fire departments, and hospital providers. Information about current
164 services and capacities, levels of service, future needs, and financing are included in the Medic
165 One/Emergency Medical Services Strategic Plan.¹⁴

166 *g. Transportation*

167 An inventory and locations of existing King County roadway facilities can be found in the King County
168 Geographic Information Systems database. Additional information about inventories, locations, condition,
169 capacity, levels of service, future needs, and financing of roadway facilities can be found in Comprehensive
170 Plan Appendices C: Transportation, C1: Transportation Needs Report, and C2 Regional Trail Needs Report;
171 the Annual Bridge Report;¹⁵ the Strategic Plan for Road Services;¹⁶ and the Transportation Concurrency
172 Update Report.¹⁷

173
174 An inventory including locations, capacities, levels of service, future needs, and financing for public transit
175 facilities and services can be found in Comprehensive Plan Appendix C: Transportation and King County
176 Metro's Strategic Plan, Service Guidelines, Long Range Plan,¹⁸ and Transit System Evaluation.¹⁹

177 *h. Criminal Legal System*

178 Capital facility planning and financing for county court, law enforcement, and jail facilities are addressed
179 through the RAMP and the King County Budget.

⁶ 2019 Comprehensive Solid Waste Management Plan, Ordinance 18893, Attachment A [[LINK](#)]

⁷ Regional Wastewater Services Plan, King County Code Chapter 28.86 [[LINK](#)]

⁸ 2018 CSO Control Program Update [[LINK](#)]

⁹ 2017 Conveyance System Improvement Program Update [[LINK](#)]

¹⁰ 2023 Asset Registry [[LINK](#)]

¹¹ 2016 Ratepayer Report [[LINK](#)]

¹² 2006 Flood Hazard Management Plan, Ordinance 15673, Attachment A [[LINK](#)]; as updated by 2013 Flood Hazard Management Plan Update and Progress Report, Ordinance 17697, Attachment A [[LINK](#)]

¹³ 2023 King County Flood Control Zone District Budget, Resolution FCD2022-13 [[LINK](#)]

¹⁴ Medic One/Emergency Medical Services 2020-2025 Strategic Plan; Ordinance 18932, Attachment A [[LINK](#)]

¹⁵ 2021 Annual Bridge Report [[LINK](#)]

¹⁶ Strategic Plan for Road Services 2014 Update, Motion 14190, Attachment A [[LINK](#)]

¹⁷ 2022 Transportation Concurrency Update Report [[LINK](#)]

¹⁸ King County Metro Strategic Plan for Public Transportation 2021-2031, King County Metro Service Guidelines Ordinance, King County Metro Long-Range Plan: Metro Connects, Ordinance 19367, Attachments A, B, and C [[LINK](#)]

¹⁹ 2022 System Evaluation, Motion 16312 [[LINK](#)]

180 **2. Facilities provided by other public entities**

181 For facilities provided by other public entities, RCW 36.70A.070(3) requires the County to:

- 182 1. identify all public entities that own capital facilities; and
- 183 2. endeavor in good faith to work with other public entities, such as special purpose districts, to gather
- 184 and include within the capital facilities element the information required for such facilities. A good faith
- 185 effort must, at a minimum, include consulting the public entity's capital facility or system plans and
- 186 emailing and calling the staff of the public entity.

187

188 Publicly accessible information about these facilities and associated future planning is limited, as they are

189 owned and operated by non-County entities and the Growth Management Act does not require those

190 entities to plan in accordance with the Act. Summarized below is information about these facilities based

191 on County research of available online information and inquiries with applicable entities as of October

192 2023. Listed plans are adopted by reference and available upon request.

193 *a. Drinking Water Supply*

194 Public water systems are managed by: homeowners; private, nonprofit organizations and corporations such

195 as homeowners' associations; private, for-profit companies; and municipal governments and water/sewer

196 districts. Given that the Growth Management Act requires the capital facilities element to address those

197 facilities owned by public entities, this subsection focuses on water services provided by municipal

198 governments and water/sewer districts.

199

200 King County is not a water utility and does not supply potable water to residents. Instead, King County has

201 certain regulatory roles for Group A and Group B water systems²⁰ that operate in unincorporated King

202 County, such as reviewing Water System Plans subject to Washington State Department of Health's

203 approval, approving Group A system expansion plans in unincorporated King County, and regulating

204 franchise agreements for use of King County rights-of-way. King County requires water utilities that are

205 expected to accommodate additional growth to prepare water comprehensive plans if they serve

206 unincorporated area. A new water comprehensive plan is required every six years. The public water

207 utilities serving unincorporated King County are as follows.

208 **i. Public Water Utilities Serving Unincorporated King County**

Public Water Utility	Capital Facility Documents
Ames Lake Water Association Inc.	Ames Lake Water Association 2018 Water System Plan
Auburn, City of	City of Auburn Comprehensive Water Plan
Bellevue, City of	City of Bellevue Water System Plan (Volumes 1-4)
Black Diamond, City of	City of Black Diamond Water System Comprehensive Plan
Carnation, City of	2015 Comprehensive Water System Plan, City of Carnation - Final
Cedar River Water & Sewer District	2016 Comprehensive Plan Update Water and Sewer Systems
Coal Creek Utility District	Coal Creek Utility District 2013 Water & Sewer System Plan
Covington Water District	Covington Water District Water System Plan May, 2016 FINAL
Dockton Water Association	Small Water System Management Program, Dockton Water Association
Duvall, City of	City of Duvall Comprehensive Water System Plan November 2021

²⁰ Group A systems generally serve more than 15 connections; Group B systems generally serve 2-14 connections.

**2024 King County Comprehensive Plan
Appendix A - Capital Facilities and Utilities
Attachment B to PO 2023-0440**

Public Water Utility	Capital Facility Documents
Edgehill Water Association	Edgehill Water Association Small Water System Management Plan
Enumclaw, City of	City of Enumclaw Comprehensive Water System Plan Final October 2013
Fall City Water District #127	2016 Water System Plan for Fall City Water District
Foothills Water Association	Foothills Water Association Comprehensive Water System Plan November 1998
Highline Water District	Highline Water District Water System Plan August, 2016 Final
Issaquah, City of	City of Issaquah 2018 Water System Plan
Kent, City of	Kent Water System Plan 2019
King County Water District 19	Water District 19 Water System Plan
King County Water District 20	King County Water District No. 20 Comprehensive Water System Plan Update - Approved April 2012
King County Water District 90	King County Water District No. 90 2015 Comprehensive Water System Plan
King County Water District 111	Lake Meridian Water District 2023 Water Comprehensive Plan
King County Water District 119	Water System Plan King County Water District No. 119
King County Water District 123	Water System Plan for King County Water District 123
King County Water District 125	2016 Water System Plan , Water District #125
Kirkland, City of	City of Kirkland Comprehensive Water System Plan August 2014, Revised March 2015
Lakehaven Water and Sewer District	Lakehaven Utility District Water System Plan Update Final April 2015
Mirrormont	Washington Water Service Company Mirrormont Water System ID#55250 1 King County Part B - Individual Water System Plan
North Bend, City of	City of North Bend Water System Plan
NE Sammamish Sewer & Water District	Northeast Sammamish Sewer and Water District Water System Plan
Redmond, City of	City of Redmond 2011 Water System Plan
Renton, City of	City of Renton Water System Plan Final May 2021
River Bend Homesites Association Inc.	River Bend SWSMP
Sallal Water Association Inc.	Sallal Water System Plan Sept 2020
Sammamish Plateau Water & Sewer District	Sammamish Plateau Water & Sewer District 2018 Water Comprehensive Plan December 2018 Revised October 2019
Seattle, City of	Seattle Public Utilities 2019 Water System Plan Revised Final August 2019
Skyway Water & Sewer	Skyway Water & Sewer District 2013 Comprehensive Plan Water & Sewer Systems
Snoqualmie, City of	City of Snoqualmie Water System Plan
Snoqualmie Pass Utility District	Snoqualmie Pass Utility District Water System Plan
Soos Creek Water & Sewer District	Soos Creek Water and Sewer District Water Comprehensive Plan 2012
Union Hill Water Association Inc.	Union Hill Water Association Comprehensive Water System Plan Final 2013

Public Water Utility	Capital Facility Documents
Westside Water Association	Small Water System Management Program Westside Water Association
Woodinville Water District	Woodinville Water District Comprehensive Water System Plan Final March 2019

209 **ii. Public Water System Coordination Act**

210 Chapter 70.116 RCW, the Public Water System Coordination Act, was used by King County in the past to
 211 establish four planning areas -- East King County, Skyway, South King County, and Vashon. King County,
 212 the Washington State Department of Health, and water utilities have developed a Coordinated Water
 213 System Plan for each of these four areas. The plans establish service areas, provide water demand
 214 forecasts, and discuss minimum water system design requirements. Water system plans prepared by
 215 individual water utilities, such as those listed in the table above, must be consistent with all applicable
 216 Coordinated Water System Plans.

217 *b. Sanitary Sewer*

218 King County requires sewer utilities to prepare sewer comprehensive plans if they are located in King
 219 County and discharge to King County's system or serve unincorporated areas. A new sewer
 220 comprehensive plan is required every six years. The public sewer utilities serving unincorporated King
 221 County are as follows.

222 **i. Public Sewer Utilities Serving Unincorporated King County**

Public Sewer Utility	Capital Facilities Documents
Auburn, City of	2016 Comprehensive Sewer Plan (General Sewer Plan)
Bellevue, City of	City of Bellevue 2013 Wastewater System Plan, Volume 1 and Volume 2
Carnation, City of	*
Cedar River Water and Sewer District	2016 Comprehensive Plan Update Water & Sewer Systems
Coal Creek Utility District	Coal Creek Utility District 2013 Water and Sewer System Plan
Kent, City of	2000 Comprehensive Sewer Plan
Lakehaven Utility District	Lakehaven Water & Sewer District 2015 Comprehensive Wastewater System Plan
NE Sammamish Sewer & Water District	Northeast Sammamish Sewer & Water District General Sewer Plan
North Bend, City of	City of North Bend Wastewater System Facilities Plan Revision
Redmond, City of	City of Redmond General Wastewater Plan Update
Renton, City of	City of Renton Long-Range Wastewater Management Plan
Sammamish Plateau Water & Sewer District	Sammamish Plateau Water Wastewater Comprehensive Plan Update and General Sewer Plan
Skyway Water and Sewer District	Skyway Water & Sewer District 2013 Comprehensive Plan Water & Sewer Systems
Snoqualmie, City of	City of Snoqualmie General Sewer Plan

Public Sewer Utility	Capital Facilities Documents
Snoqualmie Pass Utility District	Snoqualmie Pass Utility District Wastewater Facilities Plan Update
Soos Creek Water and Sewer District	Soos Creek Water and Sewer District Sewer Comprehensive Plan 2013
Southwest Suburban Sewer District	*
Stevens Pass Sewer District	*
Valley View Sewer District	2011 Comprehensive Sewer System Plan
Vashon Sewer District	Vashon Sewer District Comprehensive Sewer Plan
Woodinville Water District	Woodinville Water District 2022 General Sewer Plan Update

223 * Emailed and called but no documents provided as of October 2023

224 *c. Schools*

225 King County Code includes a method for school districts with territory in unincorporated King County to
 226 request the collection of an impact fee from new residential developments when the district is experiencing
 227 a lack of capacity due to growth. Districts must adopt a six-year capital facilities plan that provides for new
 228 capacity and submit the plan to King County for adoption as part of the capital facilities element of the King
 229 County Comprehensive Plan. King County's School Technical Review Committee (STRC) reviews each
 230 school district's capital facilities plan, enrollment projections, and standard of service. The STRC also
 231 reviews the district's overall capacity over a six-year timeframe to ensure consistency with the King County
 232 Comprehensive Plan, adopted community plans, and the district's calculation and rationale for proposed
 233 impact fees.

234
 235 School district capital facility plans are adopted annually by King County. Of the 20 districts in the County,
 236 13 have plans currently adopted by the County. Because capital facilities plans are not mandatory for
 237 special districts under the Growth Management Act, King County has no way of compelling a school district
 238 to prepare a plan unless they intend to collect a school impact fee. The Seattle, Mercer Island and Tukwila
 239 school districts do not have any unincorporated territory and so are not eligible to collect school impact
 240 fees from King County.

241
 242 In general, school districts obtain funds for new construction and improvements to existing facilities from
 243 voter-approved bonds. School districts may also qualify for state matching funds for new construction and
 244 for the renovation of capital facilities based on a formula that considers a number of factors, including the
 245 assessed valuation of the property within the particular school district. In addition, school districts have the
 246 authority to request one-year capital project levies and six-year renovation and modernization levies, with
 247 voter approval. Operating funds come from the state for "basic education." Programs that are not funded
 248 by the state are funded through maintenance and operation levies.

249
 250 More information can be found in the capital facility plans for the following school districts, as well as the
 251 requirements in King County Code Chapter 21A.28.

252 **i. Public Schools Serving Unincorporated King County**

School District	Capital Facilities Documents*
Auburn School District No. 408	Auburn School District No. 408 Capital Facilities Plan 2022 through 2028
Enumclaw School District No. 216	Enumclaw School District No. 216 Capital Facilities Plan 2022-2027
Federal Way School District No. 210	Federal Way Public Schools Capital Facilities Plan 2023
Fife School District No. 417	Fife School District No. 417 Capital Facilities Plan 2022-2028
Highline School District No. 401	Highline School District No. 401 Capital Facilities Plan 2022-2027

School District	Capital Facilities Documents*
Issaquah School District No. 411	Issaquah School District No. 411 2022 Capital Facilities Plan
Kent School District No. 415	Kent School District No. 415 Six-Year Capital Facilities Plan 2021-2022 through 2027-2028
Lake Washington School District No. 414	Lake Washington School District No. 414 Six-Year Capital Facilities Plan 2022-2027
Northshore School District No. 417	Northshore School District No. 417 Capital Facilities Plan 2022-28
Renton School District No. 403	Renton School District No. 403 2022 Capital Facilities Plan
Riverview School District No. 407	Riverview School District No. 407 2022 Capital Facilities Plan
Seattle Public Schools	
Skykomish	
Snoqualmie Valley School District No. 410	Snoqualmie Valley School District No. 410 Capital Facilities Plan 2022
Tahoma School District No. 409	Tahoma School District No. 409 Capital Facilities Plan 2022-2027
Vashon	

253 * As of October 2023; school capital facility plans are adopted annually by King County as subelements of the
 254 capital facilities element of the Comprehensive Plan, if the school district elects to collect school impact fees in
 255 unincorporated King County. Districts without a listed capital facilities plan do not currently have an interlocal
 256 agreement with King County to collect impact fees.

257 *d. Fire Protection*

258 Fire protection districts are responsible for delivering emergency services, including fire protection and
 259 emergency medical services countywide. They use response times as the level of service standard for
 260 judging when new facilities are needed. The majority of fire districts fund capital projects within their
 261 current year operating budget, or request bond issues for large capital projects.

262 **i. Fire Districts Serving Unincorporated King County**

Fire District	Capital Facilities Documents
Duvall #45	*
Eastside Fire & Rescue	CFMF 2023-2024 Scheduled Maintenance Expenditures
Enumclaw Fire District	*
King County Fire District #20	King County Fire District 20 2023 Operating Budget
King County Fire District #27	*
King County Fire District #47	*
King County Fire District #50	*
King County Fire District #51	*
Mountain View Fire & Rescue	*
Puget Sound Regional Fire Authority	King County Fire District 43 Capital Plan Executive Summary
Redmond Fire District	*
Renton Regional Fire Authority	Renton Regional Fire Authority Strategic Plan 2021-2025
South King Fire & Rescue	*
Valley Regional Fire Authority	Valley Regional Fire Authority 2021-2027 Capital Facilities Plan
Vashon Island Fire & Rescue	Vashon Fire - Fire District Evaluation; Community Based-Fire and Emergency Medical Services Strategic Plan 2023-2029

263 * Emailed and called but no documents provided as of October 2023
264 Locations of the service areas of these districts can be found in King County's iMap GIS database.

265 *e. Libraries*

266 Libraries in King County are maintained by the King County Library System (KCLS), which is not part of King
267 County government. KCLS serves residents in both incorporated and unincorporated areas. The system of
268 capital facilities owned and operated by KCLS consists of community libraries, as shown in Attachment A;
269 the following are those in unincorporated King County. KCLS's plans for and financing of capital facilities is
270 detailed in their budget and associated Capital Investment Program.²¹ As of September 2023, KCLS said
271 that they had no plans for new locations or expansions.²²

272 **i. KCLS Facilities in Unincorporated King County**

Fairwood
Fall City
Greenbridge
Redmond Ridge
Skyway
Vashon
White Center
Woodinville

273 *f. Other Parks*

274 Parks services in King County are provided by the King County Parks Division of the Department of Natural
275 Resources and Parks, the State of Washington and the federal government. Public park districts also serve
276 unincorporated King County. The parks land offered by these entities help provide green infrastructure as
277 defined by the Growth Management Act.

278 **i. Public Park Districts Serving Unincorporated King County**

Park District	Capital Facility Documents
Fall City Metropolitan Park District	*
Northshore Park and Recreation Service Area	*
Si View Metropolitan Park District	Si View Metro Parks Comprehensive Parks Plan; Si View Metropolitan Park District 2023 Budget; Potential Parkland Acquisition Target Areas
Tukwila Pool Metropolitan Park District	*
Vashon Park District	Vashon Park District Strategic Plan 2018-2024

279 * Emailed and called but no documents provided as of October 2023

280 **II. Utilities**

281 **A. Introduction**

282 The utilities element of the King County Comprehensive Plan is comprised of two parts: Chapter U9:
283 Services, Facilities and Utilities and this Appendix A. Chapter 9: Services, Facilities and Utilities establishes
284 policy regarding planning for and siting of utilities to serve the needs of existing and new residents. This
285 section of Appendix A consists of a review of public electrical, natural gas, and telecommunications utility
286 systems.

²¹ KCLS Budget Fiscal Year 2023 [[LINK](#)]

²² KCLS email; 9/14/2023

287 B. State Requirements

288 The Growth Management Act (RCW 36.70A.070 and WAC 365-196-420) requires that comprehensive plans
289 include a utilities element consisting of the general location, proposed location, and capacity of all existing
290 and proposed utilities including, but not limited to, electrical, telecommunications, and natural gas systems.

291 C. Utilities Facilities Inventories

292 Electric, gas, and telecommunications utilities facilities are not provided by King County. Instead, they are a
293 mix of private and non-County public ownership, subject to varying levels of regulatory oversight from local,
294 state, and federal agencies. King County's local oversight is limited to permit review of proposed utility
295 development projects as guided in the Comprehensive Plan and as outlined in the King County Code.
296 Local regulation of these facilities is often preempted by state or federal law.

297
298 For facilities provided by other public entities, RCW 36.70A.070(3) requires the County to:

- 299 1. identify all public entities that own capital facilities; and
300 2. endeavor in good faith to work with other public entities, such as special purpose districts, to gather
301 and include within the capital facilities element the information required for such facilities. A good faith
302 effort must, at a minimum, include consulting the public entity's capital facility or system plans and
303 emailing and calling the staff of the public entity.

304
305 Publicly accessible information about these facilities and associated future planning is limited, as they are
306 owned and operated by non-County entities and the Growth Management Act does not require those
307 entities to plan in accordance with the Act. Summarized below is information about these facilities and is
308 based on County research of online information and inquiries with applicable entities. Additionally, WAC
309 365-196-420 encourages that information about proposed utilities include those awaiting approval as of
310 the date of the applicable Comprehensive Plan update. As such, information about pending King County
311 permits for utilities facilities in the unincorporated area is also provided below.

312 1. Electric

313 Electric utilities in King County share what is described as an "integrated regional electric system."
314 Regardless of ownership, all elements of the system are designed and operated to work in a
315 complementary manner. The system includes transmission lines, substations, and generation facilities.
316 Current facilities and services are provided by Bonneville Power Administration, Puget Sound Energy, and
317 Tanner Electric Cooperative.

318
319 Locations of Bonneville Power Administration Transmission Assets are available in ArcGIS Online.²³
320 According to Bonneville Power Administration, publicly available detailed information about the current
321 and future locations of this infrastructure is unavailable due to security concerns.

322
323 As of 2022, Puget Sound Energy (PSE) had 2,840 miles of overhead wire, 6,187 miles of underground
324 cable, and 155 substations countywide; PSE's service area is available online.^{24,25} PSE's Integrated Resource
325 Plan provides a 20-year view of Puget Sound Energy's energy resource needs, and the Clean Energy
326 Implementation Plan outlines how they are planning to achieve Clean Energy Transformation Act (CETA)
327 benchmarks. The 2022 PSE Plan identifies new transmission facilities and facility replacements or upgrades
328 planned by PSE over the ensuing ten years.²⁶ According to PSE, publicly available detailed information
329 about the current and future locations of this infrastructure is unavailable due to security concerns.
330

²³ Transmission Assets - [arcgis.com](#); accessed 4/4/23 [\[LINK\]](#)

²⁴ 2022 Puget Sound Energy Community Profile - King County; Puget Sound Energy online; accessed 4/4/23. [\[LINK\]](#)

²⁵ Service Area Map - Puget Sound Energy; accessed 4/4/23 [\[LINK\]](#)

²⁶ 2022 PSE Plan [\[LINK\]](#)

331 Tanner Electric Cooperative serves Ames Lake and greater North Bend and Snoqualmie communities.²⁷
332 System information and circuit line data provided by Tanner Electric is included in Attachment A to this
333 appendix. According to Tanner Electric Cooperative, more detailed information about the current and
334 future locations of this infrastructure is unavailable due to security concerns.

335
336 Additional geospatial information about locations of electric utilities facilities can be found in the
337 Transmission Lines, Substations, and Power Plants layers of the Homeland Infrastructure Foundation-Level
338 Data GeoPlatform in ArcGIS Online.²⁸

339
340 As of April 1, 2023, there are no pending King County permits for proposed electric utilities facilities.

341 2. Natural Gas

342 Puget Sound Energy is the major supplier of natural gas to King County. The City of Enumclaw operates a
343 local distribution system that serves local customers in unincorporated King County.²⁹

344
345 As of 2022, PSE has 6,876 miles of gas main countywide.³⁰ Their Integrated Resource Plan provides a 20-
346 year view of PSE's energy resource needs, and the Clean Energy Implementation Plan outlines how they are
347 planning to achieve Clean Energy Transformation Act (CETA) benchmarks. According to PSE, more
348 detailed information about the current and future locations of this infrastructure is unavailable due to
349 security concerns.

350
351 Additional geospatial information about locations of natural gas facilities can be found in the Oil and
352 Natural Gas Wells and Natural Gas Pipelines layers in the Homeland Infrastructure Foundation-Level Data
353 GeoPlatform in ArcGIS Online.³¹

354
355 As of April 1, 2023, there are no pending King County permits for proposed natural gas utilities facilities.

356 3. Telecommunications

357 Various companies provide telecommunications services throughout unincorporated King County,
358 including voice, data, and video on various mediums such as wire, fiber optic, or radio wave. Effective
359 telecommunications services promote and enhance individual information exchange, contribute to a robust
360 regional economy, and afford numerous public services, including delivery of emergency services,
361 education, and opportunities for community involvement.

362
363 Telecommunication networks are privately owned, publicly regulated entities that are driven by market
364 forces more than statutory requirements. The County has limited control of telecommunication service
365 providers. However, its regulation of rights-of-way and associated franchise agreements with those
366 companies help ensure technical quality, protect customer rights, and support public services.

367
368 Geospatial information about locations of telecommunications facilities can be found in the FM
369 Transmission Towers, Cellular Towers, Microwave Service Towers, Paging Transmission Towers, Land
370 Mobile Commercial Transmission Towers, AM Transmission Towers, Antenna Structure Registrate, TV
371 Analog Station Transmitters, and TV Digital Station Transmitters layers of the Homeland Infrastructure
372 Foundation-Level Data GeoPlatform in ArcGIS Online.³² King County has also mapped locations of C3 Fiber
373 and INET Fiber.³³

²⁷ BPA Utility Customer Service Areas - [arcgis.com](#); accessed 4/4/23 [\[LINK\]](#); Service Territory Maps - Tanner Electric Cooperative; accessed 4/4/23 [\[LINK\]](#)

²⁸ HIFLD Open Data - [arcgis.com](#); accessed 4/4/23 [\[LINK\]](#)

²⁹ Emailed and called but no documents provided as of October 2023

³⁰ 2022 Puget Sound Energy Community Profile - King County; Puget Sound Energy online; accessed 4/4/23. [\[LINK\]](#)

³¹ HIFLD Open Data - [arcgis.com](#); accessed 4/4/23 [\[LINK\]](#)

³² IBID

³³ Map of Where Internet Fiber is Running Through King County [\[LINK\]](#)

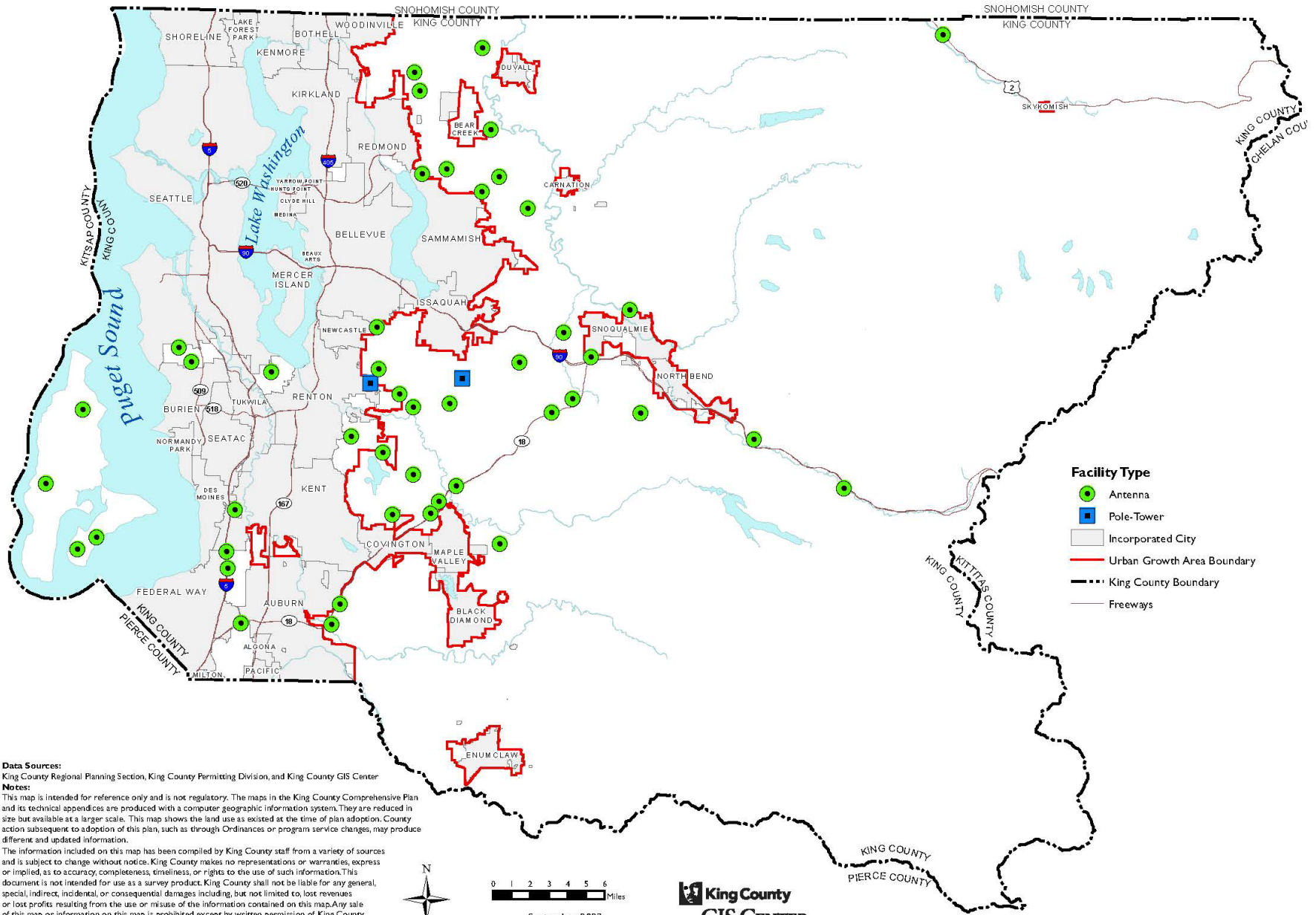
374 In 2020, King County completed a Broadband Access Study³⁴ that evaluated the availability and
375 accessibility of Broadband internet services for King County residents. The study identifies incorporated
376 and unincorporated areas served, unserved, or underserved by Broadband internet services.
377

378 As of April 1, 2023, there are 53 pending King County permits for proposed telecommunications facilities.
379 The general vicinity of their proposed locations are shown on the following page.³⁵

³⁴ 2020 Broadband Access Study [\[LINK\]](#)

³⁵ Because the of the scale of the map, some locations have more than one antenna proposed but only one dot on the map.

PENDING UNINCORPORATED KING COUNTY TELECOMMUNICATIONS FACILITIES



Facility Type

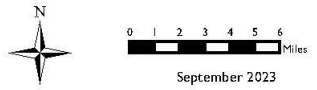
- Antenna
- Pole-Tower
- Incorporated City
- Urban Growth Area Boundary
- King County Boundary
- Freeways

Data Sources:
 King County Regional Planning Section, King County Permitting Division, and King County GIS Center

Notes:
 This map is intended for reference only and is not regulatory. The maps in the King County Comprehensive Plan and its technical appendices are produced with a computer geographic information system. They are reduced in size but available at a larger scale. This map shows the land use as existed at the time of plan adoption. County action subsequent to adoption of this plan, such as through Ordinances or program service changes, may produce different and updated information.

The information included on this map has been compiled by King County staff from a variety of sources and is subject to change without notice. King County makes no representations or warranties, express or implied, as to accuracy, completeness, timeliness, or rights to the use of such information. This document is not intended for use as a survey product. King County shall not be liable for any general, special, indirect, incidental, or consequential damages including, but not limited to, lost revenues or lost profits resulting from the use or misuse of the information contained on this map. Any sale of this map or information on this map is prohibited except by written permission of King County.

Date: 9/27/2023
 F:\KCCP2024\projects\CellTowerPermits\apps\cell_tower_permits_layout.mxd



King County
GIS CENTER

September 2023

381 Attachment A

382 Supplemental materials adopted for the purposes of this appendix

383 List of KCLS Facilities³⁶

Library Name	Square Feet	Region	Address		
			Street	City	Zip code
Algona-Pacific	5,250	Rainier	255 Ellingson Rd	Pacific	98047
Auburn	20,000	Rainier	1102 Auburn Way S	Auburn	98002
Bellevue	80,000	Lakeview	1111 110th Ave NE	Bellevue	98004
Black Diamond	5,000	Rainier	24707 Roberts Dr	Black Diamond	98010
Bothell	22,500	Alder	18215 98th Ave NE	Bothell	98011
Boulevard Park	6,536	Olympic	12015 Roseberg Ave S	Burien	98168
Burien	32,000	Olympic	400 SW 152nd St Ste 100	Burien	98166
Carnation	5,000	Glacier	4804 Tolt Ave	Carnation	98014
Children & Family Justice Center		Riverview			
Covington	23,000	Rainier	27100 164th Ave SE	Covington	98042
Crossroads	3,740	Lakeview	15600 NE 8th Street, Suite K-11	Bellevue	98008
Des Moines	10,230	Soundview	21620 11th Avenue S	Des Moines	98198
Duvall	8,000	Glacier	15508 Main St NE	Duvall	98019
Enumclaw	10,541	Rainier	1700 1st St	Enumclaw	98022
Fairwood	20,000	Cedar	17009 140th Ave SE	Renton	98058
Fall City	5,000	Cascade	33415 SE 42nd Place	Fall City	98024
Federal Way	34,500	Soundview	34200 1st Way S	Federal Way	98003
Federal Way 320th	15,000	Soundview	848 S 320th St	Federal Way	98003
Greenbridge	2,300	Olympic	9720 8th Ave SW	Seattle	98106
Issaquah	15,000	Riverview	10 W. Sunset Way	Issaquah	98027

³⁶ Provided by KCLS on 9/14/23

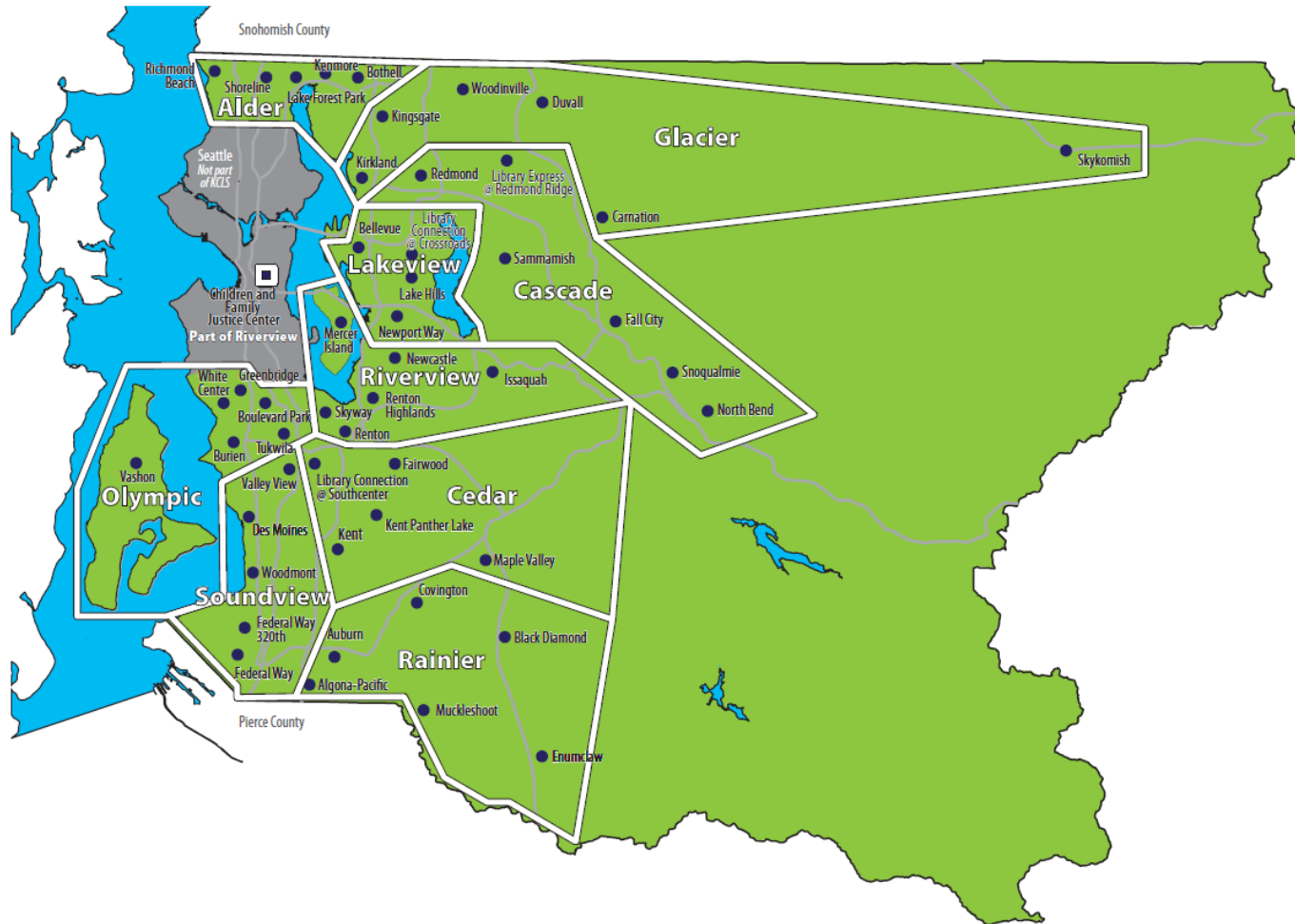
**2024 King County Comprehensive Plan
Appendix A - Capital Facilities and Utilities
Attachment B to PO 2023-0440**

Library Name	Square Feet	Region	Address		
			Street	City	Zip code
Kenmore	10,000	Alder	6531 NE 181st St	Kenmore	98028
Kent	22,600	Cedar	212 2nd Ave N	Kent	98032
Kent Panther Lake	5,300	Cedar	20500 108TH AVE SE	Kent	98031
Kingsgate	10,235	Glacier	12315 NE 143rd	Kirkland	98034
Kirkland	19,500	Glacier	308 Kirkland Ave	Kirkland	98033
Lake Forest Park	5,840	Alder	17171 Bothell Way NE	Seattle	98155
Lake Hills	10,000	Lakeview	15590 Lake Hills Blvd	Bellevue	98007
Maple Valley	10,000	Cedar	21844 SE 248th Street	Maple Valley	98038
Mercer Island	14,886	Riverview	4400 88th Ave SE	Mercer Island	98040
Muckleshoot	6,000	Rainier	39917 Auburn Enumclaw Rd SE	Auburn	98092
Newcastle	11,000	Riverview	12901 Newcastle Way	Newcastle	98056
Newport Way	8,690	Lakeview	14250 SE Newport Way	Bellevue	98006
North Bend	9,853	Cascade	115 E 4th	North Bend	98045
Preston	35,467		8114 304th Ave SE / PO Box 398/ 8180 304th Ave SE	Preston	98050
Redmond	30,000	Cascade	15990 NE 85th St.	Redmond	98052
Redmond Ridge	300	Cascade	10735 Cedar Park Crescent Rd NE	Redmond	98053
Renton	19,500	Riverview	100 Mill Ave S	Renton	98057
Renton Highlands	15,000	Riverview	2801 NE 10th St	Renton	98056
Richmond Beach	5,250	Alder	19601 21st Ave NW	Shoreline	98177
Sammamish	19,500	Cascade	825 228th Ave SE	Sammamish	98074
Shoreline	20,954	Alder	345 NE 175th	Shoreline	98155
Skykomish	1,042	Glacier	100 5th Street	Skykomish	98288
Skyway	8,000	Riverview	12601 76th Ave S	Seattle	98178
Snoqualmie	6,000	Cascade	7824 Center Blvd SE	Snoqualmie	98065
Southcenter	5,085	Cedar	1386 Southcenter Mall	Tukwila	98188
Tukwila	10,000	Olympic	14380 Tukwila International Boulevard	Tukwila	98168-4164

Library Name	Square Feet	Region	Address		
			Street	City	Zip code
Valley View	6,558	Soundview	17850 Military Rd S	Seattle	98188
Vashon	10,000	Olympic	17210 Vashon Hwy SW	Vashon Island	98070
White Center	10,000	Olympic	1409 SW 107th St	Seattle	98146
Woodinville	15,000	Glacier	17105 Avondale Road NE	Woodinville	98072
Woodmont	9,850	Soundview	26809 Pacific Highway South	Des Moines	98198

384

385 **Map of KCLS Facilities³⁷**



386

³⁷ Provided by KCLS on 9/14/23

387 **Tanner Electric System Information and Circuit Line Data³⁸**

Tanner Electric Cooperative

System Information - April 2023

North Bend

	Primary Miles	104.69
<u>Service Territory Totals</u>	Total Miles	154.91
Overhead	20.44	13.19%
Underground	134.47	86.81%

Circuit 1

Primary Overhead	0.32
Secondary Overhead	0.06
Primary Underground	20.5
Secondary Underground	7.93

Circuit 2

Primary Overhead	5.45
Secondary Overhead	1.7
Primary Underground	43.77
Secondary Underground	20.99

Circuit 3

Primary Overhead	10.45
Secondary Overhead	2.46
Primary Underground	20.97
Secondary Underground	17

Circuit 4

Primary Overhead	0
Secondary Overhead	0
Primary Underground	3.23
Secondary Underground	0.08

<u>Poles</u>	794
---------------------	-----

Ames Lake

	Primary Miles	60.28
<u>Service Territory Totals</u>	Total Miles	101.94
Overhead	14.32	14.05%
Underground	87.62	85.95%

East Overhead

Primary Overhead	4.38
Secondary Overhead	2.61
Primary Underground	1.83
Secondary Underground	5.02

East Underground

Primary Overhead	1.68
Secondary Overhead	0.89
Primary Underground	29.99
Secondary Underground	20.33

West Underground

Primary Overhead	3.64
Secondary Overhead	1.12
Primary Underground	18.76
Secondary Underground	11.69

<u>Poles</u>	559
---------------------	-----

<u>Transmission</u>	2.68
----------------------------	------

Anderson Island

	Primary Miles	65.44
<u>Service Territory Totals</u>	Total Miles	93.49
Overhead	41.02	43.88%
Underground	52.47	56.12%

Primary Overhead	32.45
Secondary Overhead	8.57
Primary Underground	32.99
Secondary Underground	19.48

<u>Poles</u>	1283
---------------------	------

System Total

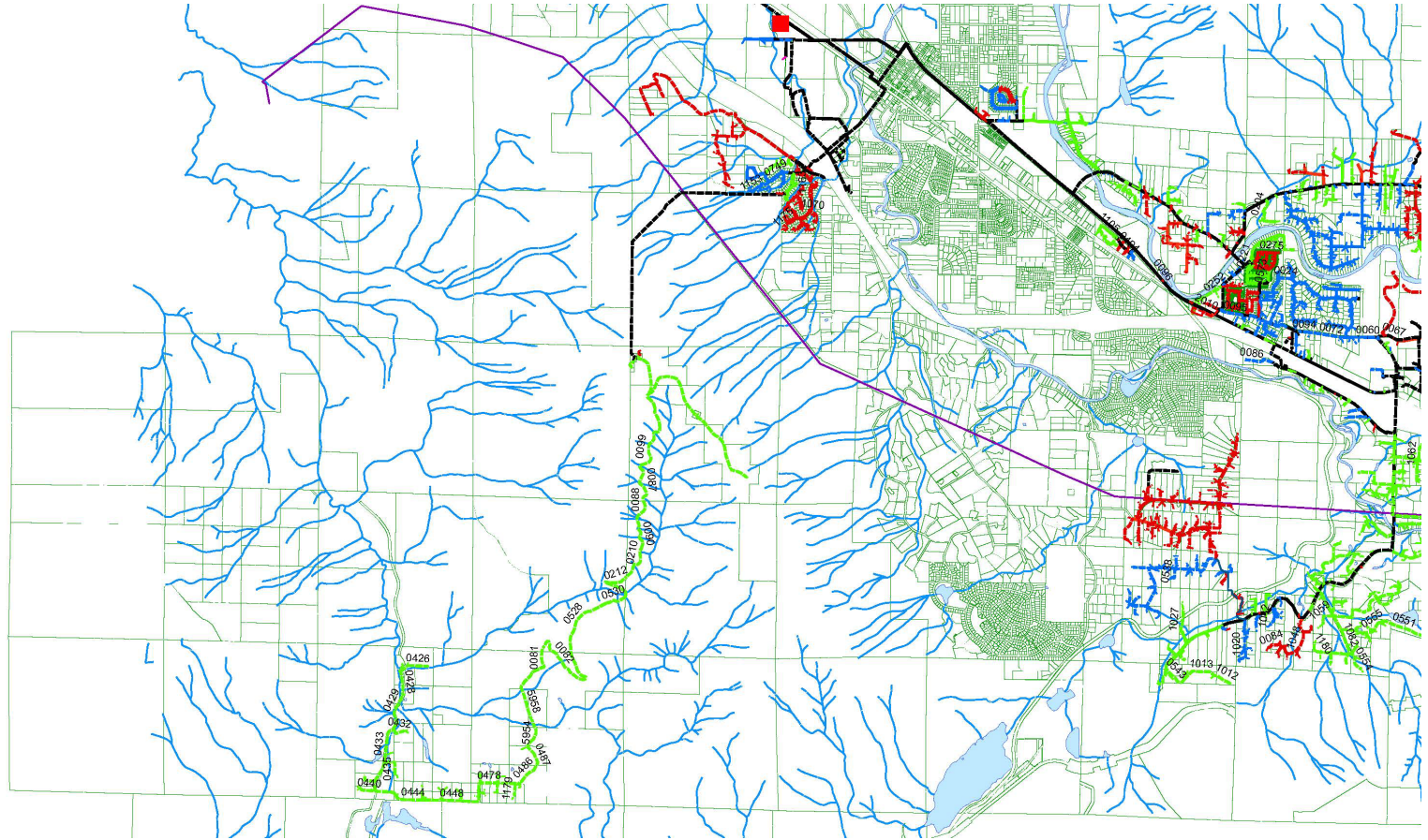
	Primary Miles	230.41
<u>Service Territory Totals</u>	Total Miles	350.34
Overhead	75.78	21.63%
Underground	274.56	78.37%

<u>Poles</u>	2636
---------------------	------

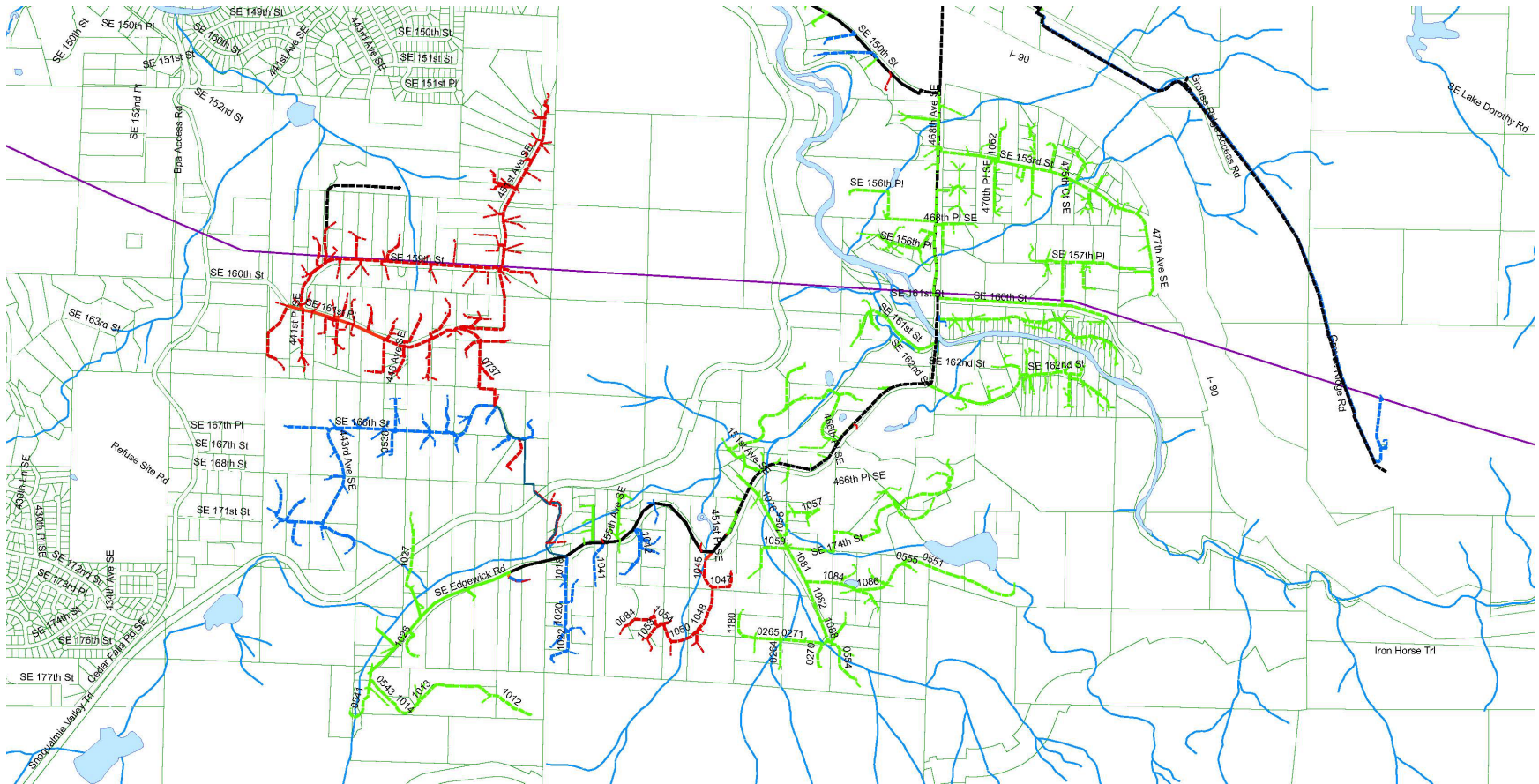
388

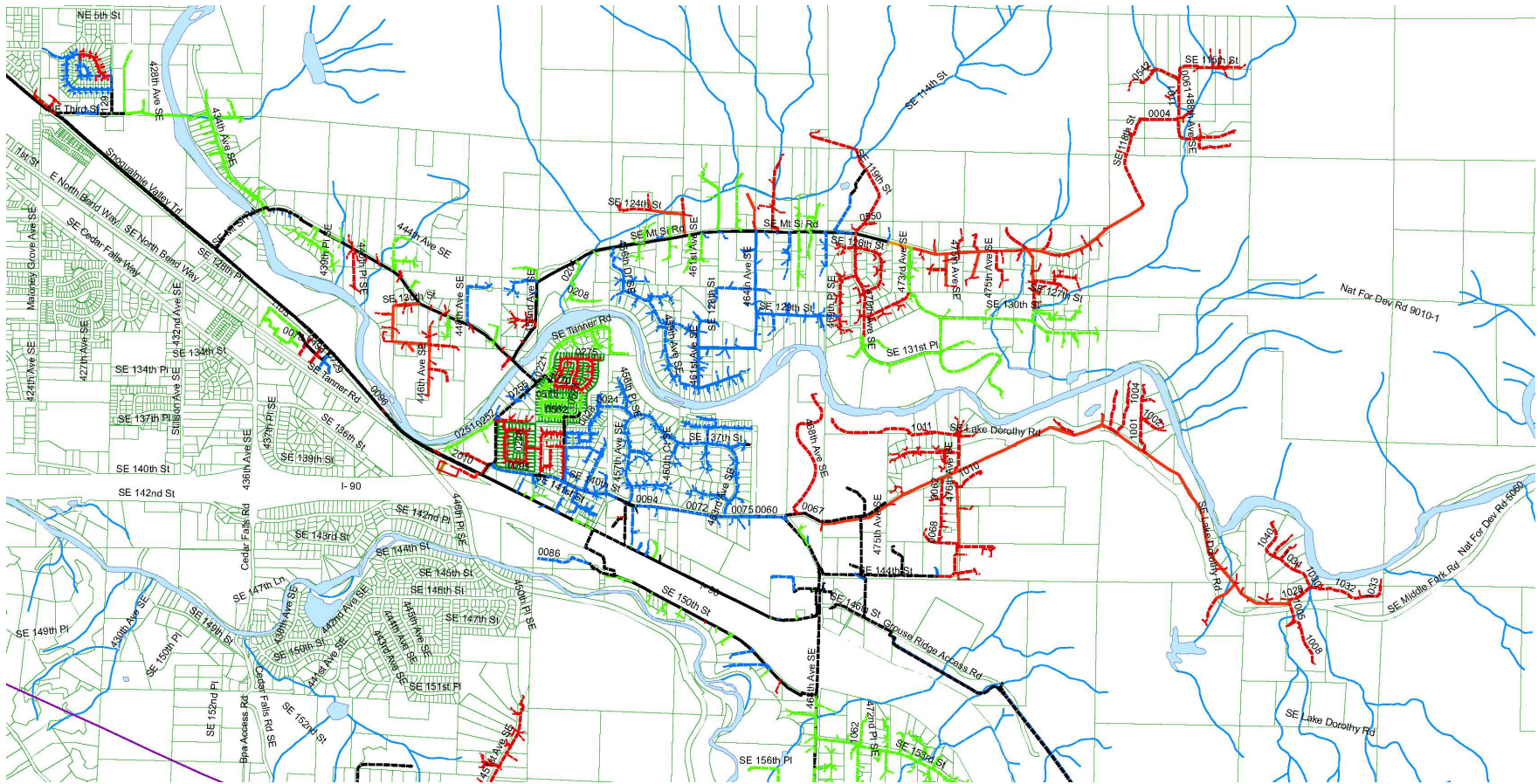
³⁸ Provided by Tanner Electric on 5/1/23

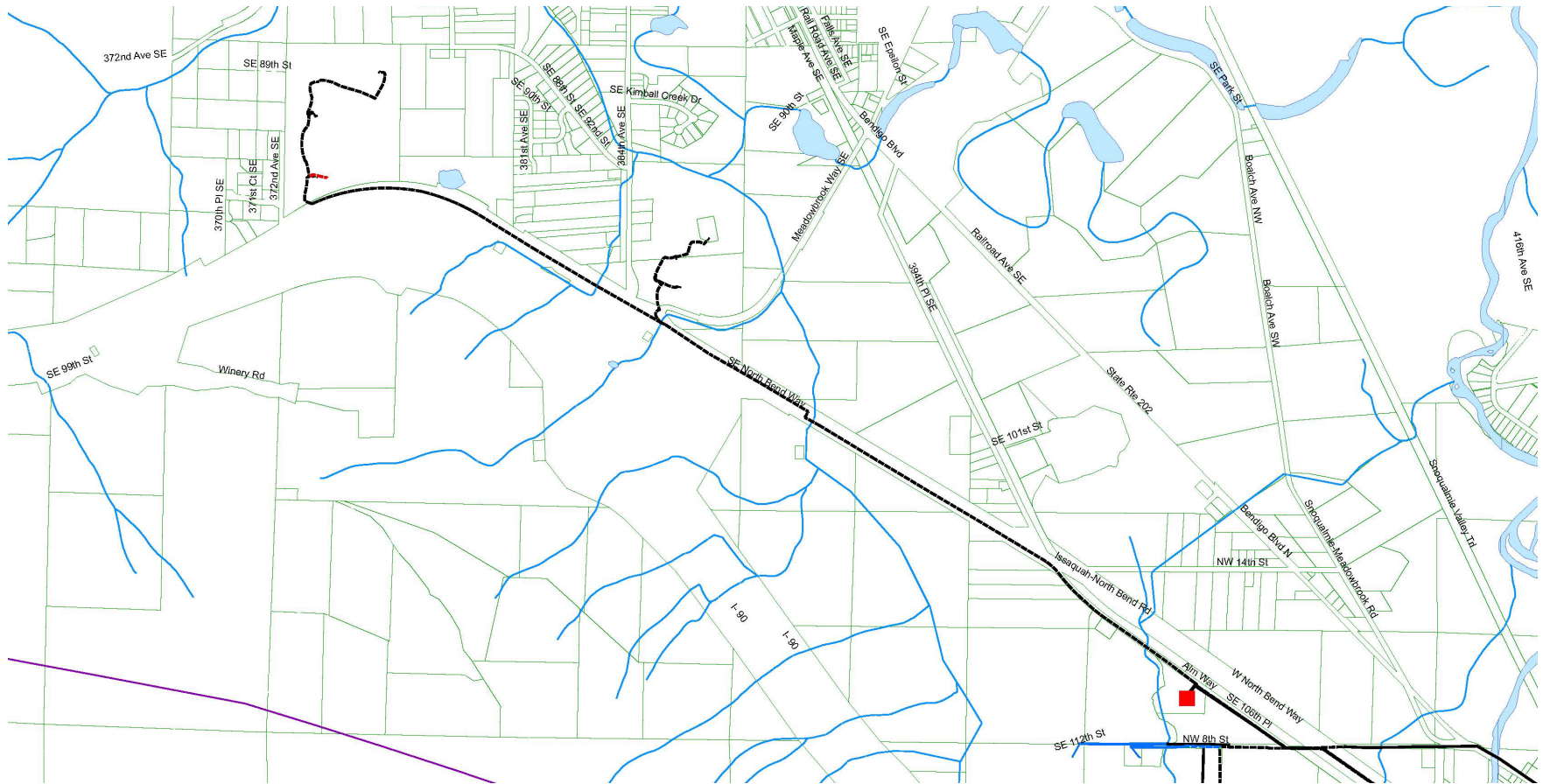
389 Tanner Electric System Information and Circuit Line Data (continued)



390







393

