

2024 King County Comprehensive Plan

King County Council Local Services and Land Use Committee
May 16, 2024

Logistics

- Website: [Kingcounty.gov/CouncilCompPlan](https://kingcounty.gov/CouncilCompPlan)
- Email: CouncilCompPlan@kingcounty.gov

2

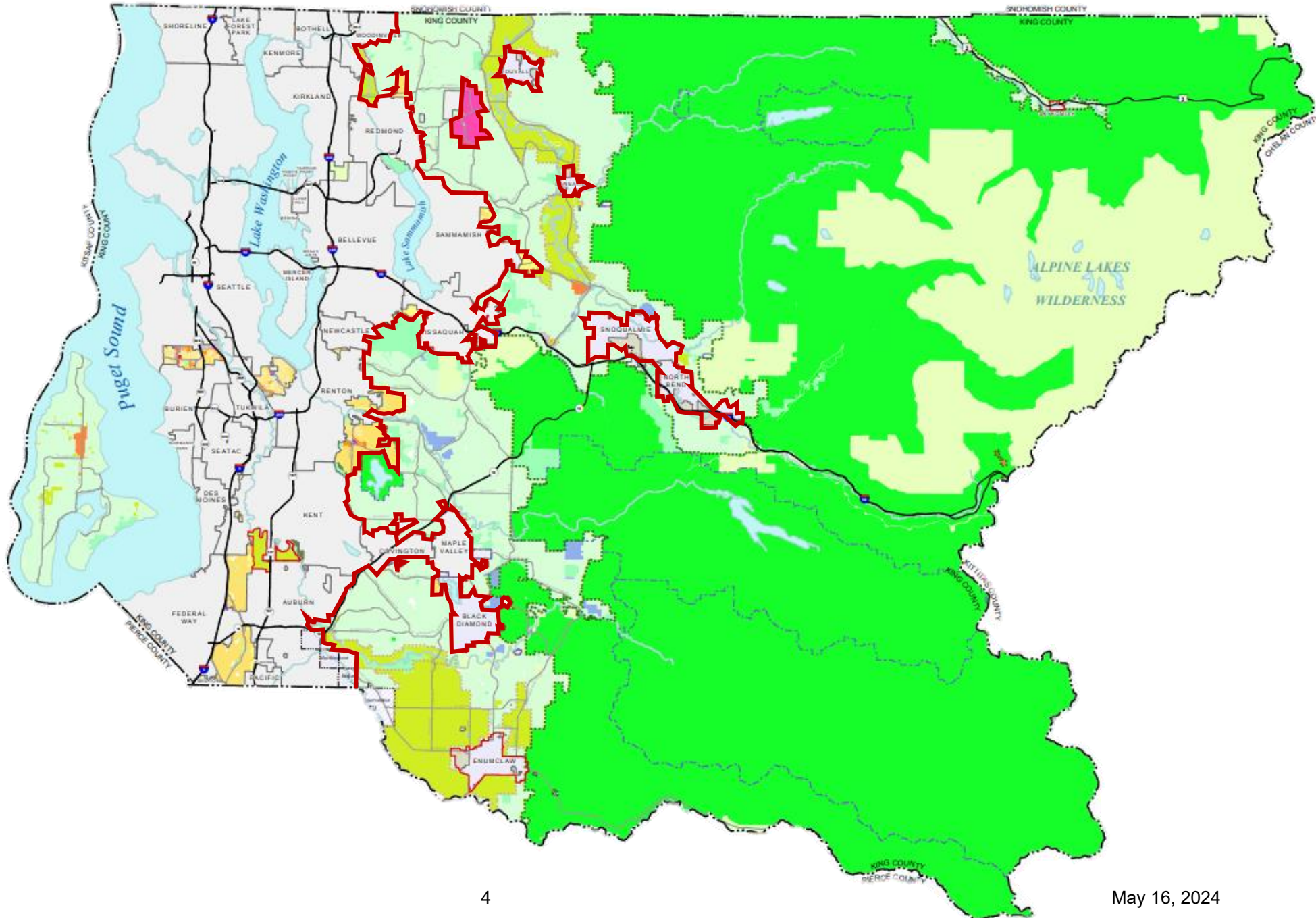
Background - Comprehensive Plan

- Guiding policy document for land use and development in unincorporated King County
- Required by the state Growth Management Act
- 2024 Comprehensive Plan is a 10-year update
 - Substantive changes to policies and implementing regulations
 - Consistency with state law changes since last periodic update
 - Underlying data updates
- Snoqualmie Valley/NE King County Subarea Plan
- Four-to-One Program updates

3

King County's Urban Growth Boundary

ESU Additional Materials



2024 Plan - Council Schedule



Striking Amendment S1

- Housing
- Commercial Uses in Urban Residential Zones
- Critical Areas
- Cultural Programs

6

General Housing

- Use of surplus County property
- Funding anti-displacement tools and programs
- Prioritizing permit review for affordable housing

7

Middle Housing

- New housing types:
 - Duplex (2 units)
 - Houseplex (between 3 and 9 units)
 - Townhouse and Apartments (10 or more units)
- CUP requirement to locate more than one unit on a lot
- Duplexes, houseplexes, and townhouses in R-1 one zone
- Duplexes, houseplexes, townhouses, and apartments in the R-4 to R-48 zones
- Cottage Housing
- Housing near frequent transit
- Manufactured Home Communities
- Congregate Housing
- Lot Splitting
- Height

8

Accessory Dwelling Units

- Allow 2 ADUs per lot in the urban area
- Height for detached ADUs is limited to the base height
- No requirement for continuous rooflines
- Remove proposed language regarding future subdivision on rural lots

9

Inclusionary Housing

- Inserts placeholders to determine affordability requirements, such as occupancy type, AMI, minimum percent of affordable units, and maximum density
- Additional summer work to include updated affordability requirements in full Council striker

10

Logistics

- Website: [Kingcounty.gov/CouncilCompPlan](https://kingcounty.gov/CouncilCompPlan)
- Email: CouncilCompPlan@kingcounty.gov

