

1
2
3
4
5
6
7
8
9
10
11
12
13
14
15
16
17
18
19
20
21
22
23
24
25
26
27
28

APPENDIX A

Capital Facilities and Utilities



King County
December 2024

29
30
31
32
33
34
35
36
37
38
39
40
41
42
43
44
45
46
47
48
49
50
51
52
53
54
55
56
57

Table of Contents

APPENDIX A..... 1

I. Capital Facilities 3

 A. Introduction..... 3

 B. State Requirements 3

 1. Growth Management Act Goals and Requirements..... 3

 2. King County Countywide Planning Policies..... 3

 C. Capital Facilities Inventories and Planning..... 4

 1. Facilities Provided by King County 4

 2. Facilities provided by other public entities..... 6

II. Utilities 11

 A. Introduction..... 11

 B. State Requirements 12

 C. Utilities Facilities Inventories 12

 1. Electric..... 12

 2. Natural Gas 13

 3. Telecommunications 13

Attachment A 16

 Supplemental materials adopted for the purposes of this appendix 16

I. Capital Facilities

A. Introduction

The capital facilities element of the King County Comprehensive Plan is comprised of two parts: Chapter U9: Services, Facilities and Utilities and this Appendix A. Chapter 9: Services, Facilities and Utilities establishes policy regarding planning for and financing of publicly owned capital facilities to serve the needs of existing and new residents. Together, Chapter 9 and this appendix address how King County should meet its capital facilities responsibilities.

This section of Appendix A is a review of the current state of planning and financing for public facilities and services in King County. The facilities are organized into two sections: those owned by King County and those owned by other public entities. The development of this appendix was guided by an integrated set of local policies and plans. Listed documents are adopted by reference for the purposes of this appendix.

B. State Requirements

Chapter 9: Services, Facilities and Utilities and this Appendix, including referenced documents, implement the requirements of the state requirements listed below.

1. Growth Management Act Goals and Requirements

The Growth Management Act (RCW 36.70A.020) requires that public facilities and services necessary to support development be adequate to serve the development at the time the development is available for occupancy and use, and without decreasing current service levels below established minimum standards.

The Growth Management Act (RCW 36.70A.070 and WAC 365-196-415) requires that comprehensive plans include a capital facilities plan element consisting of:

- An inventory of existing capital facilities owned by public entities, showing the locations and capacities of the capital facilities;
- A forecast of the future needs for such capital facilities;
- The proposed locations and capacities of expanded or new capital facilities;
- At least a six-year plan that will finance such capital facilities within projected funding capacities and clearly identifies sources of public money for such purposes; and
- A requirement to reassess the land use element if probable funding falls short of meeting existing needs and to ensure that the land use element and capital facilities plan element are coordinated and consistent.

This element must include public "green infrastructure," which are natural assets (including parks and other areas with protected tree canopy) and built facilities in the Urban Growth Area that manage wet weather and that maintain and restore natural hydrology by storing, infiltrating, evapotranspiring, and harvesting and using stormwater.

WAC 365-196-415 and the Washington State Department of Commerce's Capital Facilities Planning Guidebook provide additional guidance on how to implement this element.

2. King County Countywide Planning Policies

The Growth Management Act (RCW 36.70A.210) requires counties and cities to coordinate developing and adopting a set of mutually agreed upon planning policies to guide the development of local comprehensive plans. In response to this requirement, elected officials representing the county and the cities and towns of King County joined together to form the King County Growth Management Planning

102 Council and to cooperatively develop and adopt the King County Countywide Planning Policies. Given the
103 important role of special purpose districts in service provision, the Growth Management Planning Council
104 also created seats for representatives of such districts.

105
106 The Countywide Planning Policies provide a framework for developing local jurisdictions' comprehensive
107 plans in King County. This framework provides a mechanism for achieving consistency among
108 comprehensive plans. Jurisdictions' comprehensive plans must reflect the countywide vision for capital
109 facilities planning, including siting of facilities and the timing and phasing of land development in concert
110 with the availability of facilities and services.

111
112 The Countywide Planning Policies adopted by the King County Council and ratified by the cities call for
113 jurisdictions to provide a full range of urban services (PF-1). The countywide development patterns must
114 provide for a sufficient supply of housing, employment, education, recreation, open space and community
115 and social services.

116 C. Capital Facilities Inventories and Planning

117 1. Facilities Provided by King County

118 Chapter 9: Services, Facilities and Utilities requires County facility planning and implementation to occur as
119 part of the King County Real Property Asset Management Plan (RAMP).¹ The RAMP contains an inventory of
120 existing King County general government buildings, their locations and conditions, and provides for long-
121 range facility planning. The RAMP is updated once every four years and includes County administrative,
122 court, law enforcement, jail, public health, and human services facilities.

123
124 Additionally, the Capital Improvement Program of the King County Budget² includes six-year capital facility
125 planning and financing for: emergency medical services; general government services; Harborview Medical
126 Center; King County International Airport; parks, recreation, and open space; public transportation; roads;
127 solid waste; surface water management; and wastewater treatment.

128
129 Combined, these planning processes provide for continuing, cumulative review and updates of all County
130 facility planning and financing consistent with the Comprehensive Plan. Additional facility-specific
131 inventories and planning are as follows.

132 a. *Parks, Recreation, and Open Space*

133 The King County Open Space Plan: Parks, Trails, and Natural Areas³ is adopted as a functional plan of the
134 Comprehensive Plan. The Open Space Plan includes an inventory and locations of existing King County
135 park, recreation, and open space sites and facilities, as well as information about future growth and
136 financing. This information also addresses applicable green infrastructure provided by urban parks and
137 natural areas. More information can also be found in King County Comprehensive Plan Appendix C2:
138 Regional Trail Needs Report.

139 b. *Surface Water Management*

140
141 An inventory of existing King County stormwater facilities can be found in the King County Geographic
142 Information Systems database. Additional information about inventories, locations, conditions, future
143 needs, and financing of stormwater facilities can be found in the Stormwater Management Program Plan⁴
144 and National Pollutant Discharge Elimination System Municipal Stormwater Permit Annual Report.⁵ This
145 information also addresses applicable green infrastructure associated with stormwater management.

¹ 2019 King County Real Property Asset Management Plan, Ordinance 19062, Attachment A [\[LINK\]](#)

² 2023-2024 King County Biennial Budget, Capital Improvement Plan, Ordinance 19546, Attachment A [\[LINK\]](#)

³ King County Open Space Plan: Parks, Trails, and Natural Areas 2022 Update, Ordinance 19501, Attachment A [\[LINK\]](#)

⁴ Stormwater Management Program 2023 Final [\[LINK\]](#)

⁵ 2021 National Pollutant Discharge Elimination System Municipal Stormwater Permit Annual Report [\[LINK\]](#)

147 c. *Solid Waste*
148 The Comprehensive Solid Waste Management Plan⁶ includes an inventory and locations of King County
149 solid waste facilities, as well as information about capacities, levels of service, future needs, and financing.

151 d. *Sanitary Sewer Collection and Treatment*
152 Existing inventories and locations, current capacities, levels of service, future needs, and financing for King
153 County's regional wastewater treatment facilities are available in the King County Regional Wastewater
154 Services Plan,⁷ Combined Sewer Overflow Control Program Update,⁸ Conveyance System Improvement
155 Program Update,⁹ Asset Registry,¹⁰ and Ratepayer Report.¹¹

156 e. *Flood Hazard Management*
157 King County provides flood hazard management services on behalf of the King County Flood Control
158 District. The King County Flood Management Plan,¹² adopted by both agencies, includes an inventory and
159 locations of existing facilities, current capacities, levels of service, future needs, and financing. More
160 information can also be found in the Flood Control District annual budget and associated Capital
161 Improvement Program.¹³

162 f. *Emergency Medical Services*
163 The King County Emergency Medical Services Division of Public Health – Seattle & King County is
164 responsible for coordinating regional emergency medical services in King County and for developing,
165 implementing, and administering a mobile intensive paramedic care services program in cooperation with
166 King County fire districts, municipal fire departments, and hospital providers. Information about current
167 services and capacities, levels of service, future needs, and financing are included in the Medic
168 One/Emergency Medical Services Strategic Plan.¹⁴

171 g. *Transportation*
172 An inventory and locations of existing King County roadway facilities can be found in the King County
173 Geographic Information Systems database. Additional information about inventories, locations, condition,
174 capacity, levels of service, future needs, and financing of roadway facilities can be found in Comprehensive
175 Plan Appendices C: Transportation, C1: Transportation Needs Report, and C2 Regional Trail Needs Report;
176 the Annual Bridge Report;¹⁵ the Strategic Plan for Road Services;¹⁶ and the Transportation Concurrency
177 Update Report.¹⁷

178
179 An inventory including locations, capacities, levels of service, future needs, and financing for public transit
180 facilities and services can be found in Comprehensive Plan Appendix C: Transportation and King County
181 Metro's Strategic Plan, Service Guidelines, Long Range Plan,¹⁸ and Transit System Evaluation.¹⁹

182 h. *Criminal Legal System*
183 Capital facility planning and financing for county court, law enforcement, and jail facilities are addressed
184 through the RAMP and the King County Budget.
185
186

⁶ 2019 Comprehensive Solid Waste Management Plan, Ordinance 18893, Attachment A [[LINK](#)]

⁷ Regional Wastewater Services Plan, King County Code Chapter 28.86 [[LINK](#)]

⁸ 2018 CSO Control Program Update [[LINK](#)]

⁹ 2017 Conveyance System Improvement Program Update [[LINK](#)]

¹⁰ 2023 Asset Registry [[LINK](#)]

¹¹ 2016 Ratepayer Report [[LINK](#)]

¹² 2024 Flood Management Plan, Ordinance 19820, Attachment A [[LINK](#)]

¹³ 2023 King County Flood Control Zone District Budget, Resolution FCD2022-13 [[LINK](#)]

¹⁴ Medic One/Emergency Medical Services 2020-2025 Strategic Plan; Ordinance 18932, Attachment A [[LINK](#)]

¹⁵ 2021 Annual Bridge Report [[LINK](#)]

¹⁶ Strategic Plan for Road Services 2014 Update, Motion 14190, Attachment A [[LINK](#)]

¹⁷ 2022 Transportation Concurrency Update Report [[LINK](#)]

¹⁸ King County Metro Strategic Plan for Public Transportation 2021-2031, King County Metro Service Guidelines Ordinance, King County Metro Long-Range Plan: Metro Connects, Ordinance 19367, Attachments A, B, and C [[LINK](#)]

¹⁹ 2022 System Evaluation, Motion 16312 [[LINK](#)]

187 **2. Facilities provided by other public entities**

188 For facilities provided by other public entities, RCW 36.70A.070(3) requires the County to:

- 189 1. identify all public entities that own capital facilities; and
- 190 2. endeavor in good faith to work with other public entities, such as special purpose districts, to gather
- 191 and include within the capital facilities element the information required for such facilities. A good faith
- 192 effort must, at a minimum, include consulting the public entity's capital facility or system plans and
- 193 emailing and calling the staff of the public entity.

194

195 Publicly accessible information about these facilities and associated future planning is limited, as they are

196 owned and operated by non-County entities and the Growth Management Act does not require those

197 entities to plan in accordance with the Act. Summarized below is information about these facilities based

198 on County research of available online information as of October 2023 and inquiries with applicable entities

199 as of September 2024. Listed plans are adopted by reference and available upon request.

200

201 *a. Drinking Water Supply*

202 Public water systems are managed by: homeowners; private, nonprofit organizations and corporations such

203 as homeowners' associations; private, for-profit companies; and municipal governments and water/sewer

204 districts. Given that the Growth Management Act requires the capital facilities element to address those

205 facilities owned by public entities, this subsection focuses on water services provided by municipal

206 governments and water/sewer districts.

207

208 King County is not a water utility and does not supply potable water to residents. Instead, King County has

209 certain regulatory roles for Group A and Group B water systems²⁰ that operate in unincorporated King

210 County, such as reviewing Water System Plans subject to Washington State Department of Health's

211 approval, approving Group A system expansion plans in unincorporated King County, and regulating

212 franchise agreements for use of King County rights-of-way. King County requires water utilities that are

213 expected to accommodate additional growth to prepare water comprehensive plans if they serve

214 unincorporated area. A new water comprehensive plan is required every six years. The public water

215 utilities serving unincorporated King County are as follows.

216 **i. Public Water Utilities Serving Unincorporated King County**

| Public Water Utility | Capital Facility Documents |
|------------------------------------|------------------------------------------------------------------|
| Ames Lake Water Association Inc. | Ames Lake Water Association 2018 Water System Plan |
| Auburn, City of | City of Auburn Comprehensive Water Plan |
| Bellevue, City of | City of Bellevue Water System Plan (Volumes 1-4) |
| Black Diamond, City of | City of Black Diamond Water System Comprehensive Plan |
| Carnation, City of | 2015 Comprehensive Water System Plan, City of Carnation - Final |
| Cedar River Water & Sewer District | 2016 Comprehensive Plan Update Water and Sewer Systems |
| Coal Creek Utility District | Coal Creek Utility District 2013 Water & Sewer System Plan |
| Covington Water District | Covington Water District Water System Plan May, 2016 FINAL |
| Dockton Water Association | Small Water System Management Program, Dockton Water Association |
| Duvall, City of | City of Duvall Comprehensive Water System Plan November 2021 |

²⁰ Group A systems generally serve more than 15 connections; Group B systems generally serve 2-14 connections.

**2024 King County Comprehensive Plan
Appendix A - Capital Facilities and Utilities
Attachment B to Proposed Ordinance 2023-0440**

| Public Water Utility | Capital Facility Documents |
|------------------------------------------|-----------------------------------------------------------------------------------------------------------------------|
| Edgehill Water Association | Edgehill Water Association Small Water System Management Plan |
| Enumclaw, City of | City of Enumclaw Comprehensive Water System Plan Final October 2013 |
| Fall City Water District #127 | 2016 Water System Plan for Fall City Water District |
| Foothills Water Association | Foothills Water Association Comprehensive Water System Plan November 1998 |
| Highline Water District | Highline Water District Water System Plan August, 2016 Final |
| Issaquah, City of | City of Issaquah 2018 Water System Plan |
| Kent, City of | Kent Water System Plan 2019 |
| King County Water District 19 | Water District 19 Water System Plan |
| King County Water District 20 | King County Water District No. 20 Comprehensive Water System Plan Update - Approved April 2012 |
| King County Water District 90 | King County Water District No. 90 2015 Comprehensive Water System Plan |
| King County Water District 111 | Lake Meridian Water District 2023 Water Comprehensive Plan |
| King County Water District 119 | Water System Plan King County Water District No. 119 |
| King County Water District 123 | Water System Plan for King County Water District 123 |
| King County Water District 125 | 2016 Water System Plan , Water District #125 |
| Kirkland, City of | City of Kirkland Comprehensive Water System Plan August 2014, Revised March 2015 |
| Lakehaven Water and Sewer District | Lakehaven Utility District Water System Plan Update Final April 2015 |
| Mirrormont | Washington Water Service Company Mirrormont Water System ID#55250 1 King County Part B - Individual Water System Plan |
| North Bend, City of | City of North Bend Water System Plan |
| NE Sammamish Sewer & Water District | Northeast Sammamish Sewer and Water District Water System Plan |
| Redmond, City of | City of Redmond 2011 Water System Plan |
| Renton, City of | City of Renton Water System Plan Final May 2021 |
| River Bend Homesites Association Inc. | River Bend SWSMP |
| Sallal Water Association Inc. | Sallal Water System Plan Sept 2020 |
| Sammamish Plateau Water & Sewer District | Sammamish Plateau Water & Sewer District 2018 Water Comprehensive Plan December 2018 Revised October 2019 |
| Seattle, City of | Seattle Public Utilities 2019 Water System Plan Revised Final August 2019 |
| Skyway Water & Sewer | Skyway Water & Sewer District 2013 Comprehensive Plan Water & Sewer Systems |
| Snoqualmie, City of | City of Snoqualmie Water System Plan |
| Snoqualmie Pass Utility District | Snoqualmie Pass Utility District Water System Plan |
| Soos Creek Water & Sewer District | Soos Creek Water and Sewer District Water Comprehensive Plan 2012 |
| Union Hill Water Association Inc. | Union Hill Water Association Comprehensive Water System Plan Final 2013 |

| Public Water Utility | Capital Facility Documents |
|----------------------------|-----------------------------------------------------------------------------|
| Westside Water Association | Small Water System Management Program Westside Water Association |
| Woodinville Water District | Woodinville Water District Comprehensive Water System Plan Final March 2019 |

217 **ii. Public Water System Coordination Act**

218 Chapter 70.116 RCW, the Public Water System Coordination Act, was used by King County in the past to
 219 establish four planning areas -- East King County, Skyway, South King County, and Vashon. King County,
 220 the Washington State Department of Health, and water utilities have developed a Coordinated Water
 221 System Plan for each of these four areas. The plans establish service areas, provide water demand
 222 forecasts, and discuss minimum water system design requirements. Water system plans prepared by
 223 individual water utilities, such as those listed in the table above, must be consistent with all applicable
 224 Coordinated Water System Plans.

225
 226 *b. Sanitary Sewer*

227 King County requires sewer utilities to prepare sewer comprehensive plans if they are located in King
 228 County and discharge to King County's system or serve unincorporated areas. A new sewer
 229 comprehensive plan is required every six years. The public sewer utilities serving unincorporated King
 230 County are as follows.

231 **i. Public Sewer Utilities Serving Unincorporated King County**

| Public Sewer Utility | Capital Facilities Documents |
|------------------------------------------|-------------------------------------------------------------------------------------|
| Auburn, City of | 2016 Comprehensive Sewer Plan (General Sewer Plan) |
| Bellevue, City of | City of Bellevue 2013 Wastewater System Plan, Volume 1 and Volume 2 |
| Carnation, City of | * |
| Cedar River Water and Sewer District | 2016 Comprehensive Plan Update Water & Sewer Systems |
| Coal Creek Utility District | Coal Creek Utility District 2013 Water and Sewer System Plan |
| Kent, City of | 2000 Comprehensive Sewer Plan |
| Lakehaven Utility District | Lakehaven Water & Sewer District 2015 Comprehensive Wastewater System Plan |
| NE Sammamish Sewer & Water District | Northeast Sammamish Sewer & Water District General Sewer Plan |
| North Bend, City of | City of North Bend Wastewater System Facilities Plan Revision |
| Redmond, City of | City of Redmond General Wastewater Plan Update |
| Renton, City of | City of Renton Long-Range Wastewater Management Plan |
| Sammamish Plateau Water & Sewer District | Sammamish Plateau Water Wastewater Comprehensive Plan Update and General Sewer Plan |
| Skyway Water and Sewer District | Skyway Water & Sewer District 2013 Comprehensive Plan Water & Sewer Systems |
| Snoqualmie, City of | City of Snoqualmie General Sewer Plan |

| Public Sewer Utility | Capital Facilities Documents |
|-------------------------------------|--------------------------------------------------------------------|
| Snoqualmie Pass Utility District | Snoqualmie Pass Utility District Wastewater Facilities Plan Update |
| Soos Creek Water and Sewer District | Soos Creek Water and Sewer District Sewer Comprehensive Plan 2013 |
| Southwest Suburban Sewer District | * |
| Stevens Pass Sewer District | * |
| Valley View Sewer District | 2011 Comprehensive Sewer System Plan |
| Vashon Sewer District | Vashon Sewer District Comprehensive Sewer Plan |
| Woodinville Water District | Woodinville Water District 2022 General Sewer Plan Update |

* Emailed and called but no documents provided as of September 2024

232
233

c. Schools

234
235
236
237
238
239
240
241
242
243

King County Code includes a method for school districts with territory in unincorporated King County to request the collection of an impact fee from new residential developments when the district is experiencing a lack of capacity due to growth. Districts must adopt a six-year capital facilities plan that provides for new capacity and submit the plan to King County for adoption as part of the capital facilities element of the King County Comprehensive Plan. King County's School Technical Review Committee (STRC) reviews each school district's capital facilities plan, enrollment projections, and standard of service. The STRC also reviews the district's overall capacity over a six-year timeframe to ensure consistency with the King County Comprehensive Plan, adopted community plans, and the district's calculation and rationale for proposed impact fees.

244
245
246
247
248
249
250

School district capital facility plans are adopted annually by King County. Of the 20 districts in the County, 13 have plans currently adopted by the County. Because capital facilities plans are not mandatory for special districts under the Growth Management Act, King County has no way of compelling a school district to prepare a plan unless they intend to collect a school impact fee. The Seattle, Mercer Island and Tukwila school districts do not have any unincorporated territory and so are not eligible to collect school impact fees from King County.

251
252
253
254
255
256
257
258

In general, school districts obtain funds for new construction and improvements to existing facilities from voter-approved bonds. School districts may also qualify for state matching funds for new construction and for the renovation of capital facilities based on a formula that considers a number of factors, including the assessed valuation of the property within the particular school district. In addition, school districts have the authority to request one-year capital project levies and six-year renovation and modernization levies, with voter approval. Operating funds come from the state for "basic education." Programs that are not funded by the state are funded through maintenance and operation levies.

259
260
261

More information can be found in the capital facility plans for the following school districts, as well as the requirements in King County Code Chapter 21A.28.

i. Public Schools Serving Unincorporated King County

| School District | Capital Facilities Documents |
|-------------------------------------|--------------------------------------------------------------------------|
| Auburn School District No. 408 | Auburn School District No. 408 Capital Facilities Plan 2022 through 2028 |
| Enumclaw School District No. 216 | Enumclaw School District No. 216 Capital Facilities Plan 2022-2027 |
| Federal Way School District No. 210 | Federal Way Public Schools Capital Facilities Plan 2023 |
| Fife School District No. 417 | Fife School District No. 417 Capital Facilities Plan 2022-2028 |

| School District | Capital Facilities Documents |
|-------------------------------------------|-------------------------------------------------------------------------------------------|
| Highline School District No. 401 | Highline School District No. 401 Capital Facilities Plan 2022-2027 |
| Issaquah School District No. 411 | Issaquah School District No. 411 2022 Capital Facilities Plan |
| Kent School District No. 415 | Kent School District No. 415 Six-Year Capital Facilities Plan 2021-2022 through 2027-2028 |
| Lake Washington School District No. 414 | Lake Washington School District No. 414 Six-Year Capital Facilities Plan 2022-2027 |
| Northshore School District No. 417 | Northshore School District No. 417 Capital Facilities Plan 2022-28 |
| Renton School District No. 403 | Renton School District No. 403 2022 Capital Facilities Plan |
| Riverview School District No. 407 | Riverview School District No. 407 2022 Capital Facilities Plan |
| Seattle Public Schools No. 1 | 2021 Facilities Master Plan Update ²¹ |
| Skykomish School District No. 404 | * |
| Snoqualmie Valley School District No. 410 | Snoqualmie Valley School District No. 410 Capital Facilities Plan 2022 |
| Tahoma School District No. 409 | Tahoma School District No. 409 Capital Facilities Plan 2022-2027 |
| Vashon Island School District No. 402 | * |

263 * Emailed and called but no documents provided as of September 2024

264 *d. Fire Protection*

266 Fire protection districts are responsible for delivering emergency services, including fire protection and
 267 emergency medical services countywide. They use response times as the level of service standard for
 268 judging when new facilities are needed. The majority of fire districts fund capital projects within their
 269 current year operating budget, or request bond issues for large capital projects.

270 **i. Fire Districts Serving Unincorporated King County**

| Fire District | Capital Facilities Documents |
|-------------------------------------|------------------------------------------------------------------|
| Duvall #45 | * |
| Eastside Fire & Rescue | CFMF 2023-2024 Scheduled Maintenance Expenditures |
| Enumclaw Fire District | * |
| King County Fire District #11 | * |
| King County Fire District #20 | King County Fire District 20 2023 Operating Budget |
| King County Fire District #27 | * |
| King County Fire District #47 | * |
| King County Fire District #50 | * |
| King County Fire District #51 | * |
| Mountain View Fire & Rescue | * |
| Puget Sound Regional Fire Authority | King County Fire District 43 Capital Plan Executive Summary |
| Redmond Fire District | * |
| Renton Regional Fire Authority | Renton Regional Fire Authority Strategic Plan 2021-2025 |
| South King Fire & Rescue | * |
| Valley Regional Fire Authority | Valley Regional Fire Authority 2021-2027 Capital Facilities Plan |

²¹ 2021 Facilities Master Plan Update [[LINK](#)]

| Fire District | Capital Facilities Documents |
|-----------------------------|----------------------------------------------------------------------------------------------------------------------|
| Vashon Island Fire & Rescue | Vashon Fire - Fire District Evaluation; Community Based-Fire and Emergency Medical Services Strategic Plan 2023-2029 |

271 * Emailed and called but no documents provided as of September 2024
 272 Locations of the service areas of these districts can be found in King County's iMap GIS database.
 273

274 **e Libraries**

275 Libraries in King County are maintained by the King County Library System (KCLS), which is not part of King
 276 County government. KCLS serves residents in both incorporated and unincorporated areas. The system of
 277 capital facilities owned and operated by KCLS consists of community libraries, as shown in Attachment A;
 278 the following are those in unincorporated King County. KCLS's plans for and financing of capital facilities is
 279 detailed in their budget and associated Capital Investment Program.²² As of September 2023, KCLS said
 280 that they had no plans for new locations or expansions.²³

281 **i. KCLS Facilities in Unincorporated King County**

| |
|---------------|
| Fairwood |
| Fall City |
| Greenbridge |
| Redmond Ridge |
| Skyway |
| Vashon |
| White Center |
| Woodinville |

283 **f. Other Parks**

284 Parks services in King County are provided by the King County Parks Division of the Department of Natural
 285 Resources and Parks, the State of Washington and the federal government. Public park districts also serve
 286 unincorporated King County. The parks land offered by these entities help provide green infrastructure as
 287 defined by the Growth Management Act.

288 **i. Public Park Districts Serving Unincorporated King County**

| Park District | Capital Facility Documents |
|---------------------------------------------|-------------------------------------------------------------------------------------------------------------------------------------------|
| Fall City Metropolitan Park District | * |
| Northshore Park and Recreation Service Area | * |
| Si View Metropolitan Park District | Si View Metro Parks Comprehensive Parks Plan; Si View Metropolitan Park District 2023 Budget; Potential Parkland Acquisition Target Areas |
| Tukwila Pool Metropolitan Park District | * |
| Vashon Park District | Vashon Park District Strategic Plan 2018-2024 |

289 * Emailed and called but no documents provided as of September 2024

290 II. Utilities

291 A. Introduction

292 The utilities element of the King County Comprehensive Plan is comprised of two parts: Chapter U9:
 293 Services, Facilities and Utilities and this Appendix A. Chapter 9: Services, Facilities and Utilities establishes
 294 policy regarding planning for and siting of utilities to serve the needs of existing and new residents. This

²² KCLS Budget Fiscal Year 2023 [[LINK](#)]

²³ KCLS email; 9/14/2023

295 section of Appendix A consists of a review of public electrical, natural gas, and telecommunications utility
296 systems.

297 B. State Requirements

298 The Growth Management Act (RCW 36.70A.070 and WAC 365-196-420) requires that comprehensive plans
299 include a utilities element consisting of the general location, proposed location, and capacity of all existing
300 and proposed utilities including, but not limited to, electrical, telecommunications, and natural gas systems.

301 C. Utilities Facilities Inventories

302 Electric, gas, and telecommunications utilities facilities are not provided by King County. Instead, they are a
303 mix of private and non-County public ownership, subject to varying levels of regulatory oversight from local,
304 state, and federal agencies. King County's local oversight is limited to permit review of proposed utility
305 development projects as guided in the Comprehensive Plan and as outlined in the King County Code.
306 Local regulation of these facilities is often preempted by state or federal law.

307
308 For facilities provided by other public entities, RCW 36.70A.070(3) requires the County to:

- 309 1. identify all public entities that own capital facilities; and
310 2. endeavor in good faith to work with other public entities, such as special purpose districts, to gather
311 and include within the capital facilities element the information required for such facilities. A good faith
312 effort must, at a minimum, include consulting the public entity's capital facility or system plans and
313 emailing and calling the staff of the public entity.

314
315 Publicly accessible information about these facilities and associated future planning is limited, as they are
316 owned and operated by non-County entities and the Growth Management Act does not require those
317 entities to plan in accordance with the Act. Summarized below is information about these facilities and is
318 based on County research of online information and inquiries with applicable entities. Additionally, WAC
319 365-196-420 encourages that information about proposed utilities include those awaiting approval as of
320 the date of the applicable Comprehensive Plan update. As such, information about pending King County
321 permits for utilities facilities in the unincorporated area is also provided below.

322 1. Electric

323 Electric utilities in King County share what is described as an "integrated regional electric system."
324 Regardless of ownership, all elements of the system are designed and operated to work in a
325 complementary manner. The system includes transmission lines, substations, and generation facilities.
326 Current facilities and services are provided by Bonneville Power Administration, Puget Sound Energy, and
327 Tanner Electric Cooperative.

328
329 Locations of Bonneville Power Administration Transmission Assets are available in ArcGIS Online.²⁴
330 According to Bonneville Power Administration, publicly available detailed information about the current
331 and future locations of this infrastructure is unavailable due to security concerns.

332
333 As of 2022, Puget Sound Energy (PSE) had 2,840 miles of overhead wire, 6,187 miles of underground
334 cable, and 155 substations countywide; PSE's service area is available online.^{25,26} PSE's Integrated Resource
335 Plan provides a 20-year view of Puget Sound Energy's energy resource needs, and the Clean Energy
336 Implementation Plan outlines how they are planning to achieve Clean Energy Transformation Act (CETA)
337 benchmarks. The 2022 PSE Plan identifies new transmission facilities and facility replacements or upgrades
338 planned by PSE over the ensuing ten years.²⁷ According to PSE, publicly available detailed information

²⁴ Transmission Assets - arcgis.com; accessed 4/4/23 [\[LINK\]](#)

²⁵ 2022 Puget Sound Energy Community Profile - King County; Puget Sound Energy online; accessed 4/4/23. [\[LINK\]](#)

²⁶ Service Area Map - Puget Sound Energy; accessed 4/4/23 [\[LINK\]](#)

²⁷ 2022 PSE Plan [\[LINK\]](#)

339 about the current and future locations of this infrastructure is unavailable due to security concerns.

340

341 Tanner Electric Cooperative serves Ames Lake and greater North Bend and Snoqualmie communities.²⁸

342 System information and circuit line data provided by Tanner Electric is included in Attachment A to this

343 appendix. According to Tanner Electric Cooperative, more detailed information about the current and

344 future locations of this infrastructure is unavailable due to security concerns.

345

346 Additional geospatial information about locations of electric utilities facilities can be found in the

347 Transmission Lines, Substations, and Power Plants layers of the Homeland Infrastructure Foundation-Level

348 Data GeoPlatform in ArcGIS Online.²⁹

349

350 As of April 1, 2023, there are no pending King County permits for proposed electric utilities facilities.

351 2. Natural Gas

352 Puget Sound Energy is the major supplier of natural gas to King County. The City of Enumclaw operates a
353 local distribution system that serves local customers in unincorporated King County.³⁰

354

355 As of 2022, PSE has 6,876 miles of gas main countywide.³¹ Their Integrated Resource Plan provides a 20-

356 year view of PSE's energy resource needs, and the Clean Energy Implementation Plan outlines how they are

357 planning to achieve Clean Energy Transformation Act (CETA) benchmarks. According to PSE, more

358 detailed information about the current and future locations of this infrastructure is unavailable due to

359 security concerns.

360

361 Additional geospatial information about locations of natural gas facilities can be found in the Oil and

362 Natural Gas Wells and Natural Gas Pipelines layers in the Homeland Infrastructure Foundation-Level Data

363 GeoPlatform in ArcGIS Online.³²

364

365 As of April 1, 2023, there are no pending King County permits for proposed natural gas utilities facilities.

366 3. Telecommunications

367 Various companies provide telecommunications services throughout unincorporated King County,

368 including voice, data, and video on various mediums such as wire, fiber optic, or radio wave. Effective

369 telecommunications services promote and enhance individual information exchange, contribute to a robust

370 regional economy, and afford numerous public services, including delivery of emergency services,

371 education, and opportunities for community involvement.

372

373 Telecommunication networks are privately owned, publicly regulated entities that are driven by market

374 forces more than statutory requirements. The County has limited control of telecommunication service

375 providers. However, its regulation of rights-of-way and associated franchise agreements with those

376 companies help ensure technical quality, protect customer rights, and support public services.

377

378 Geospatial information about locations of telecommunications facilities can be found in the FM

379 Transmission Towers, Cellular Towers, Microwave Service Towers, Paging Transmission Towers, Land

380 Mobile Commercial Transmission Towers, AM Transmission Towers, Antenna Structure Registrars, TV

381 Analog Station Transmitters, and TV Digital Station Transmitters layers of the Homeland Infrastructure

382 Foundation-Level Data GeoPlatform in ArcGIS Online.³³ King County has also mapped locations of C3 Fiber

²⁸ BPA Utility Customer Service Areas - arcgis.com; accessed 4/4/23 [\[LINK\]](#); Service Territory Maps - Tanner Electric Cooperative; accessed 4/4/23 [\[LINK\]](#)

²⁹ HIFLD Open Data - arcgis.com; accessed 4/4/23 [\[LINK\]](#)

³⁰ Emailed and called but no documents provided as of October 2023

³¹ 2022 Puget Sound Energy Community Profile - King County; Puget Sound Energy online; accessed 4/4/23. [\[LINK\]](#)

³² HIFLD Open Data - arcgis.com; accessed 4/4/23 [\[LINK\]](#)

³³ IBID

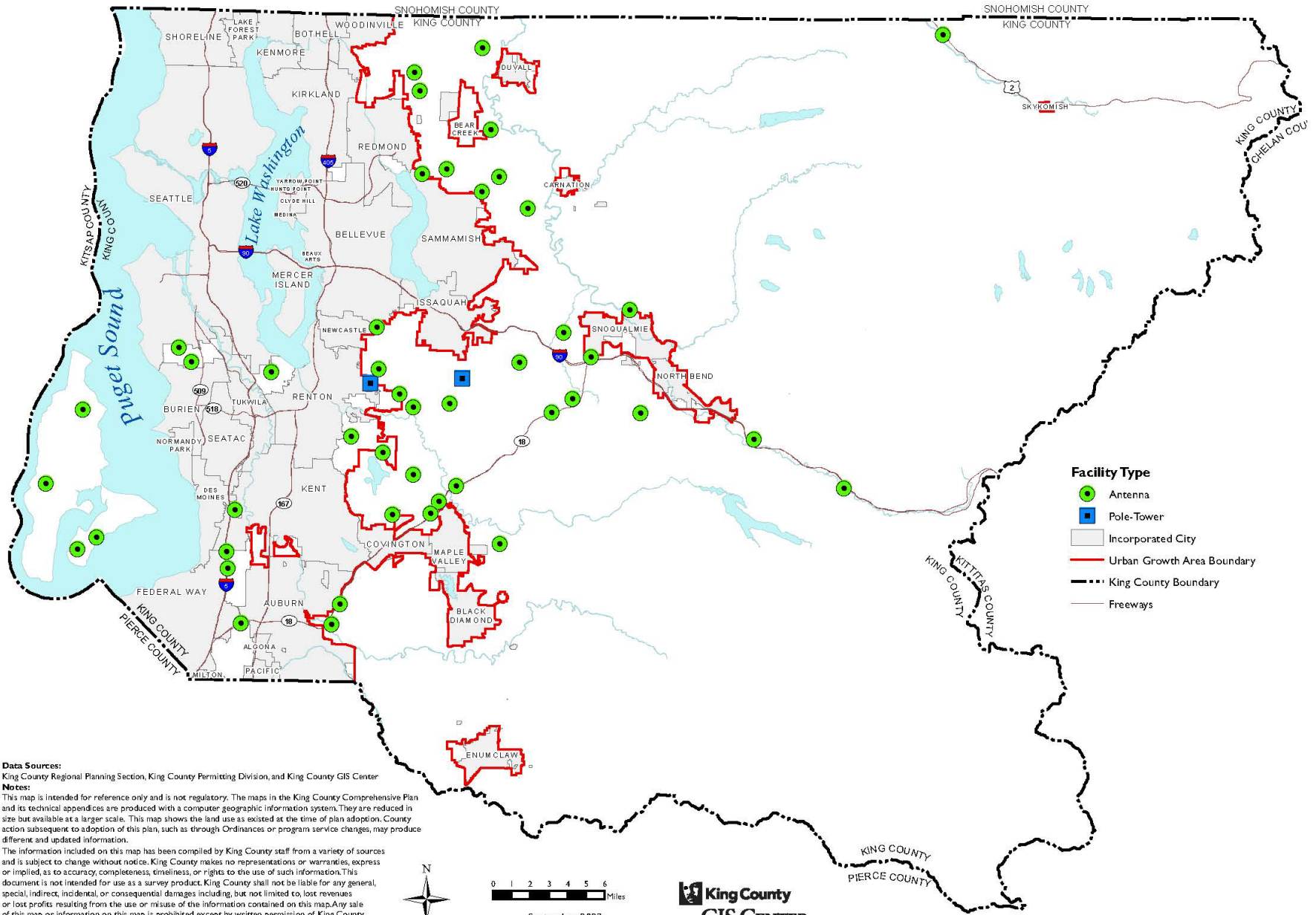
383 and INET Fiber.³⁴
384 In 2020, King County completed a Broadband Access Study³⁵ that evaluated the availability and
385 accessibility of Broadband internet services for King County residents. The study identifies incorporated
386 and unincorporated areas served, unserved, or underserved by Broadband internet services.
387
388 As of April 1, 2023, there are 53 pending King County permits for proposed telecommunications facilities.
389 The general vicinity of their proposed locations are shown on the following page.³⁶

³⁴ Map of Where Internet Fiber is Running Through King County [\[LINK\]](#)

³⁵ 2020 Broadband Access Study [\[LINK\]](#)

³⁶ Because of the scale of the map, some locations have more than one antenna proposed but only one dot on the map.

PENDING UNINCORPORATED KING COUNTY TELECOMMUNICATIONS FACILITIES



Data Sources:
 King County Regional Planning Section, King County Permitting Division, and King County GIS Center

Notes:
 This map is intended for reference only and is not regulatory. The maps in the King County Comprehensive Plan and its technical appendices are produced with a computer geographic information system. They are reduced in size but available at a larger scale. This map shows the land use as existed at the time of plan adoption. County action subsequent to adoption of this plan, such as through Ordinances or program service changes, may produce different and updated information.

The information included on this map has been compiled by King County staff from a variety of sources and is subject to change without notice. King County makes no representations or warranties, express or implied, as to accuracy, completeness, timeliness, or rights to the use of such information. This document is not intended for use as a survey product. King County shall not be liable for any general, special, indirect, incidental, or consequential damages including, but not limited to, lost revenues or lost profits resulting from the use or misuse of the information contained on this map. Any sale of this map or information on this map is prohibited except by written permission of King County.
 Date: 9/27/2023
 F:\KCCP2024\projects\CellTowerPermits\apps\cell_tower_permits_layout.mxd



King County
 GIS CENTER

September 2023

391 Attachment A

392 Supplemental materials adopted for the purposes of this appendix

393 List of KCLS Facilities³⁷

| Library Name | Square Feet | Region | Address | | |
|----------------------------------|-------------|-----------|---------------------------------|---------------|----------|
| | | | Street | City | Zip code |
| Algona-Pacific | 5,250 | Rainier | 255 Ellingson Rd | Pacific | 98047 |
| Auburn | 20,000 | Rainier | 1102 Auburn Way S | Auburn | 98002 |
| Bellevue | 80,000 | Lakeview | 1111 110th Ave NE | Bellevue | 98004 |
| Black Diamond | 5,000 | Rainier | 24707 Roberts Dr | Black Diamond | 98010 |
| Bothell | 22,500 | Alder | 18215 98th Ave NE | Bothell | 98011 |
| Boulevard Park | 6,536 | Olympic | 12015 Roseberg Ave S | Burien | 98168 |
| Burien | 32,000 | Olympic | 400 SW 152nd St Ste 100 | Burien | 98166 |
| Carnation | 5,000 | Glacier | 4804 Tolt Ave | Carnation | 98014 |
| Children & Family Justice Center | | Riverview | | | |
| Covington | 23,000 | Rainier | 27100 164th Ave SE | Covington | 98042 |
| Crossroads | 3,740 | Lakeview | 15600 NE 8th Street, Suite K-11 | Bellevue | 98008 |
| Des Moines | 10,230 | Soundview | 21620 11th Avenue S | Des Moines | 98198 |
| Duvall | 8,000 | Glacier | 15508 Main St NE | Duvall | 98019 |
| Enumclaw | 10,541 | Rainier | 1700 1st St | Enumclaw | 98022 |
| Fairwood | 20,000 | Cedar | 17009 140th Ave SE | Renton | 98058 |
| Fall City | 5,000 | Cascade | 33415 SE 42nd Place | Fall City | 98024 |
| Federal Way | 34,500 | Soundview | 34200 1st Way S | Federal Way | 98003 |
| Federal Way 320th | 15,000 | Soundview | 848 S 320th St | Federal Way | 98003 |
| Greenbridge | 2,300 | Olympic | 9720 8th Ave SW | Seattle | 98106 |

³⁷ Provided by KCLS on 9/14/23

**2024 King County Comprehensive Plan
Appendix A - Capital Facilities and Utilities
Attachment B to Proposed Ordinance 2023-0440**

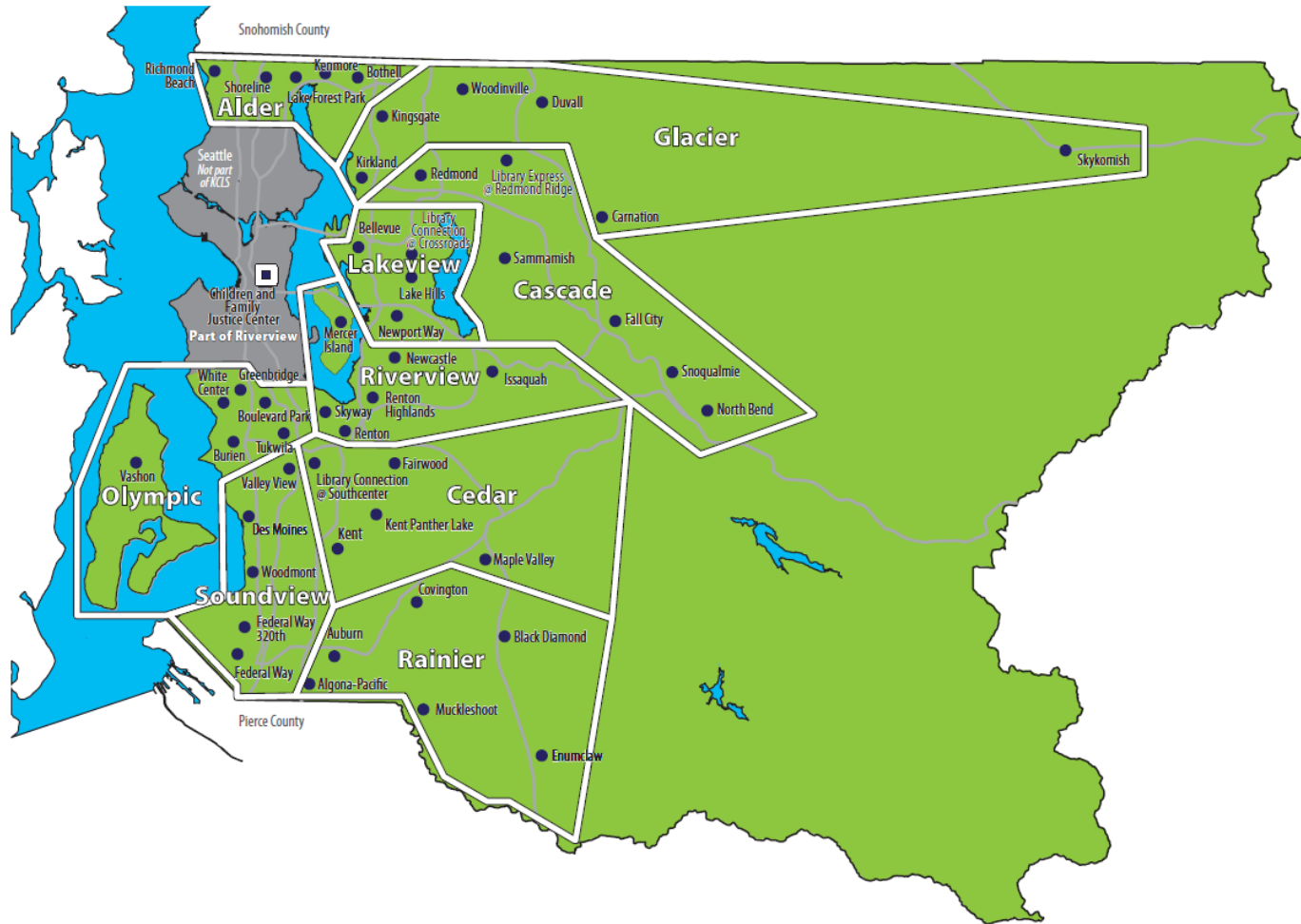
| Library Name | Square Feet | Region | Address | | |
|-------------------|-------------|-----------|---------------------------------------------------|---------------|----------|
| | | | Street | City | Zip code |
| Issaquah | 15,000 | Riverview | 10 W. Sunset Way | Issaquah | 98027 |
| Kenmore | 10,000 | Alder | 6531 NE 181st St | Kenmore | 98028 |
| Kent | 22,600 | Cedar | 212 2nd Ave N | Kent | 98032 |
| Kent Panther Lake | 5,300 | Cedar | 20500 108TH AVE SE | Kent | 98031 |
| Kingsgate | 10,235 | Glacier | 12315 NE 143rd | Kirkland | 98034 |
| Kirkland | 19,500 | Glacier | 308 Kirkland Ave | Kirkland | 98033 |
| Lake Forest Park | 5,840 | Alder | 17171 Bothell Way NE | Seattle | 98155 |
| Lake Hills | 10,000 | Lakeview | 15590 Lake Hills Blvd | Bellevue | 98007 |
| Maple Valley | 10,000 | Cedar | 21844 SE 248th Street | Maple Valley | 98038 |
| Mercer Island | 14,886 | Riverview | 4400 88th Ave SE | Mercer Island | 98040 |
| Muckleshoot | 6,000 | Rainier | 39917 Auburn Enumclaw Rd SE | Auburn | 98092 |
| Newcastle | 11,000 | Riverview | 12901 Newcastle Way | Newcastle | 98056 |
| Newport Way | 8,690 | Lakeview | 14250 SE Newport Way | Bellevue | 98006 |
| North Bend | 9,853 | Cascade | 115 E 4th | North Bend | 98045 |
| Preston | 35,467 | | 8114 304th Ave SE / PO Box 398/ 8180 304th Ave SE | Preston | 98050 |
| Redmond | 30,000 | Cascade | 15990 NE 85th St. | Redmond | 98052 |
| Redmond Ridge | 300 | Cascade | 10735 Cedar Park Crescent Rd NE | Redmond | 98053 |
| Renton | 19,500 | Riverview | 100 Mill Ave S | Renton | 98057 |
| Renton Highlands | 15,000 | Riverview | 2801 NE 10th St | Renton | 98056 |
| Richmond Beach | 5,250 | Alder | 19601 21st Ave NW | Shoreline | 98177 |
| Sammamish | 19,500 | Cascade | 825 228th Ave SE | Sammamish | 98074 |
| Shoreline | 20,954 | Alder | 345 NE 175th | Shoreline | 98155 |
| Skykomish | 1,042 | Glacier | 100 5th Street | Skykomish | 98288 |
| Skyway | 8,000 | Riverview | 12601 76th Ave S | Seattle | 98178 |
| Snoqualmie | 6,000 | Cascade | 7824 Center Blvd SE | Snoqualmie | 98065 |
| Southcenter | 5,085 | Cedar | 1386 Southcenter Mall | Tukwila | 98188 |

**2024 King County Comprehensive Plan
Appendix A - Capital Facilities and Utilities
Attachment B to Proposed Ordinance 2023-0440**

| Library Name | Square Feet | Region | Address | | |
|--------------|-------------|-----------|---------------------------------------|---------------|------------|
| | | | Street | City | Zip code |
| Tukwila | 10,000 | Olympic | 14380 Tukwila International Boulevard | Tukwila | 98168-4164 |
| Valley View | 6,558 | Soundview | 17850 Military Rd S | Seattle | 98188 |
| Vashon | 10,000 | Olympic | 17210 Vashon Hwy SW | Vashon Island | 98070 |
| White Center | 10,000 | Olympic | 1409 SW 107th St | Seattle | 98146 |
| Woodinville | 15,000 | Glacier | 17105 Avondale Road NE | Woodinville | 98072 |
| Woodmont | 9,850 | Soundview | 26809 Pacific Highway South | Des Moines | 98198 |

394

395 **Map of KCLS Facilities³⁸**



396

³⁸ Provided by KCLS on 9/14/23

397 **Tanner Electric System Information and Circuit Line Data³⁹**

Tanner Electric Cooperative

System Information - April 2023

North Bend

| | | |
|---------------------------------|---------------|--------|
| | Primary Miles | 104.69 |
| Service Territory Totals | Total Miles | 154.91 |
| Overhead | 20.44 | 13.19% |
| Underground | 134.47 | 86.81% |

Circuit 1

| | |
|-----------------------|------|
| Primary Overhead | 0.32 |
| Secondary Overhead | 0.06 |
| Primary Underground | 20.5 |
| Secondary Underground | 7.93 |

Circuit 2

| | |
|-----------------------|-------|
| Primary Overhead | 5.45 |
| Secondary Overhead | 1.7 |
| Primary Underground | 43.77 |
| Secondary Underground | 20.99 |

Circuit 3

| | |
|-----------------------|-------|
| Primary Overhead | 10.45 |
| Secondary Overhead | 2.46 |
| Primary Underground | 20.97 |
| Secondary Underground | 17 |

Circuit 4

| | |
|-----------------------|------|
| Primary Overhead | 0 |
| Secondary Overhead | 0 |
| Primary Underground | 3.23 |
| Secondary Underground | 0.08 |

| | |
|--------------|-----|
| Poles | 794 |
|--------------|-----|

Ames Lake

| | | |
|---------------------------------|---------------|--------|
| | Primary Miles | 60.28 |
| Service Territory Totals | Total Miles | 101.94 |
| Overhead | 14.32 | 14.05% |
| Underground | 87.62 | 85.95% |

East Overhead

| | |
|-----------------------|------|
| Primary Overhead | 4.38 |
| Secondary Overhead | 2.61 |
| Primary Underground | 1.83 |
| Secondary Underground | 5.02 |

East Underground

| | |
|-----------------------|-------|
| Primary Overhead | 1.68 |
| Secondary Overhead | 0.89 |
| Primary Underground | 29.99 |
| Secondary Underground | 20.33 |

West Underground

| | |
|-----------------------|-------|
| Primary Overhead | 3.64 |
| Secondary Overhead | 1.12 |
| Primary Underground | 18.76 |
| Secondary Underground | 11.69 |

| | |
|--------------|-----|
| Poles | 559 |
|--------------|-----|

| | |
|---------------------|------|
| Transmission | 2.68 |
|---------------------|------|

Anderson Island

| | | |
|---------------------------------|---------------|--------|
| | Primary Miles | 65.44 |
| Service Territory Totals | Total Miles | 93.49 |
| Overhead | 41.02 | 43.88% |
| Underground | 52.47 | 56.12% |

| | |
|-----------------------|-------|
| Primary Overhead | 32.45 |
| Secondary Overhead | 8.57 |
| Primary Underground | 32.99 |
| Secondary Underground | 19.48 |

| | |
|--------------|------|
| Poles | 1283 |
|--------------|------|

System Total

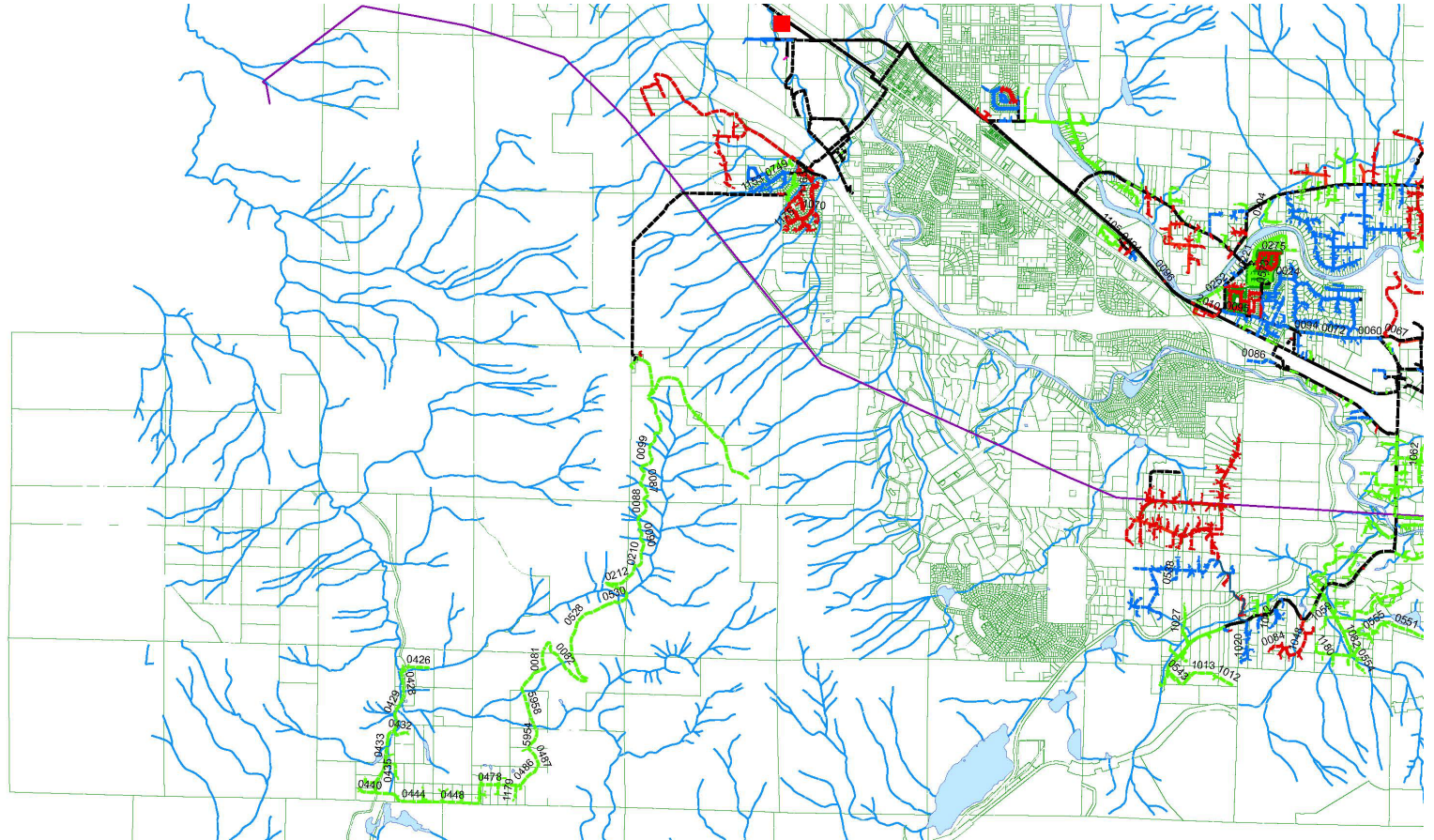
| | | |
|---------------------------------|---------------|--------|
| | Primary Miles | 230.41 |
| Service Territory Totals | Total Miles | 350.34 |
| Overhead | 75.78 | 21.63% |
| Underground | 274.56 | 78.37% |

| | |
|--------------|------|
| Poles | 2636 |
|--------------|------|

398

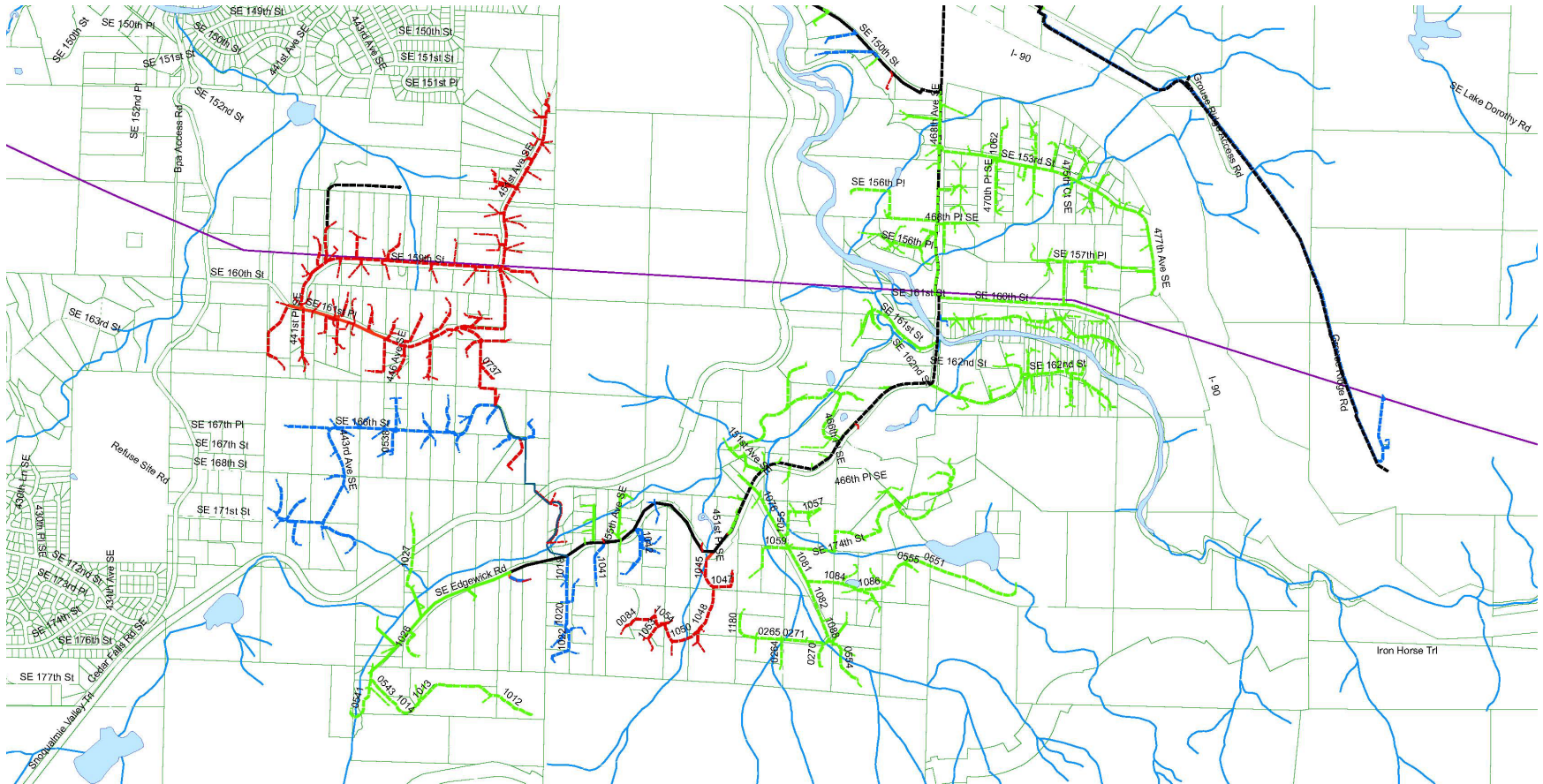
³⁹ Provided by Tanner Electric on 5/1/23

399 **Tanner Electric System Information and Circuit Line Data (continued)**

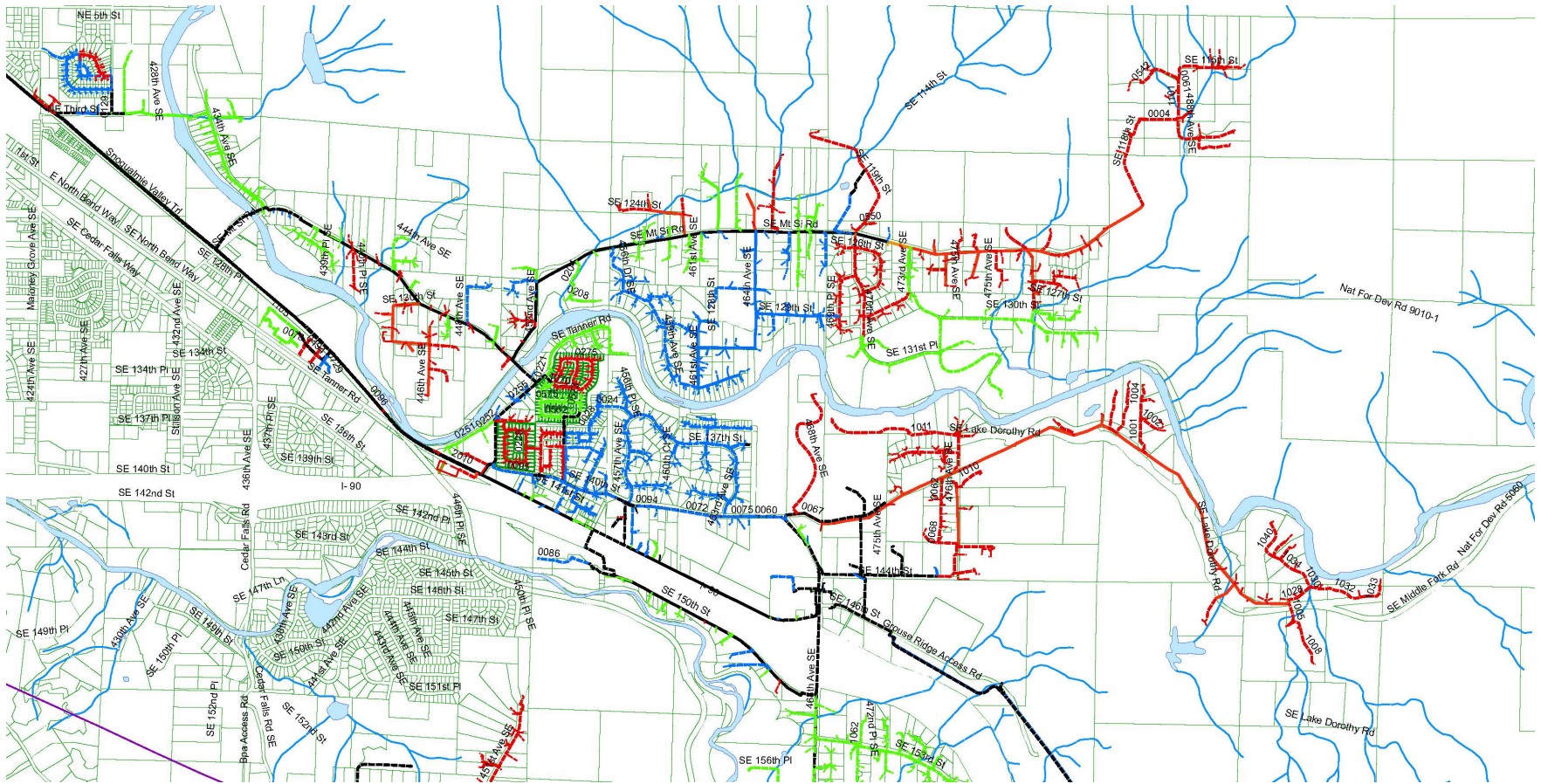


400

2024 King County Comprehensive Plan
Appendix A - Capital Facilities and Utilities
Attachment B to Proposed Ordinance 2023-0440

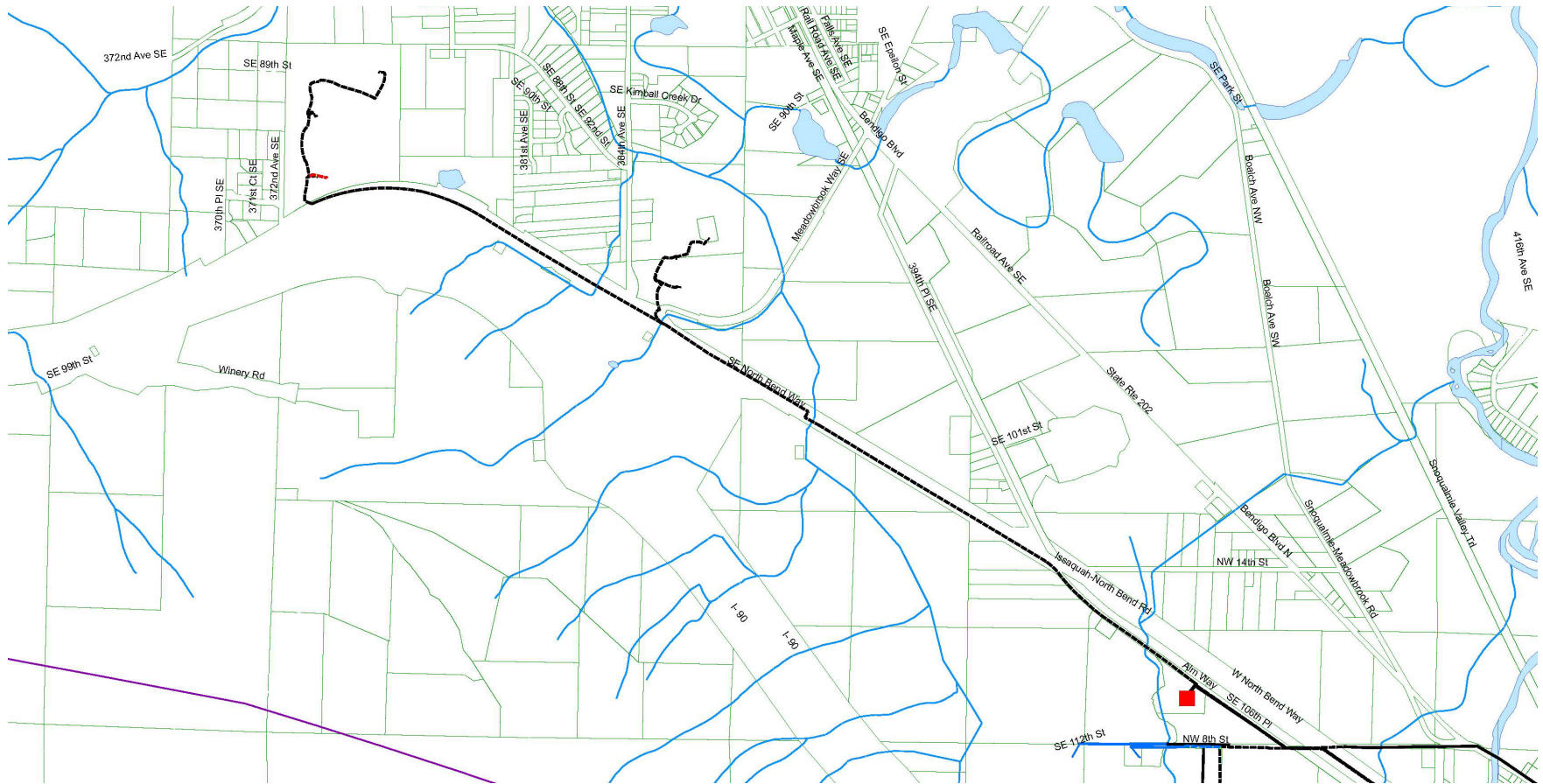


401



402

2024 King County Comprehensive Plan
Appendix A - Capital Facilities and Utilities
Attachment B to Proposed Ordinance 2023-0440



403

