

1
2
3
4
5
6
7
8
9
10
11
12
13
14
15
16
17
18
19
20
21
22
23
24
25
26
27
28

APPENDIX C

Transportation



King County
December 2024

29
30
31
32
33
34
35
36
37
38

Table of Contents

I. Requirements of the Transportation Element	3
II. King County Arterial Functional Classification	4
III. Regionally Significant State Highways Level of Service Standards	6
IV. Transportation Inventory	8
V. Vehicle Travel Forecast Summary.....	28

39
40
41
42
43
44
45
46
47
48
49
50
51
52
53
54
55
56
57
58
59
60
61
62
63
64
65
66
67
68
69
70
71
72
73
74
75
76
77
78
79
80
81
82
83
84
85

I. Requirements of the Transportation Element

Specific requirements for the transportation element are found at RCW 36.70A.070(6)(a). The transportation element of the *King County Comprehensive Plan* meets those requirements as follows:

- **Land Use Assumptions.** The transportation element is based on the same population and employment growth targets provided in Chapter 2 (Urban Communities) of the *King County Comprehensive Plan*.
- **Estimated Traffic Impacts to State-Owned Facilities.** The travel forecast in Technical Appendix C uses the Puget Sound Regional Council Travel Model, which incorporates state-owned facilities.
- **An Inventory of Transportation Facilities and Services.** The inventory is provided in Appendix C of the *King County Comprehensive Plan*. As required by growth management legislation, it includes air, water, and ground transportation facilities and services as well as transit alignments and general aviation airport facilities. It includes both county-owned and state-owned transportation facilities within the county's boundaries.
- **Level of Service Standards including Standards for State Routes.** King County has adopted urban and rural area level of service standards for its Transportation Concurrency Management Program. The Puget Sound Regional Council uses regional level of service standards to evaluate facilities, including state routes. Level of service standards for regionally significant state highways are described in Chapter 8 of the *King County Comprehensive Plan* and mapped in this appendix.
- **Actions to Bring Facilities into Compliance.** King County's Transportation Needs Report is adopted by reference with the *King County Comprehensive Plan*. In addition, the Roads Capital Improvement Program, guided by the *Strategic Plan for Road Services*, identifies specific projects, strategies, and actions to address transportation needs.
- **Traffic Forecasts for at Least Ten Years.** King County's Transportation Needs Report is prepared using the Puget Sound Regional Council's Travel Model, which has a 2050 horizon year.
- **State and Local Transportation Needs to Meet Current and Future Demands.** The County's Transportation Needs Report identifies local system needs, the *Strategic Plan for Road Services* establishes the priorities, and the Capital Improvement Program provides the funds for projects. State and local transportation needs are included in the Puget Sound Regional Council travel demand forecasts provided in the *King County Comprehensive Plan* Technical Appendix C. These elements address the Growth Management Act requirement of identifying state and local system needs to meet current and future demand.
- **Analysis of Funding Capability.** A financial analysis is included in the Transportation Needs Report, which is adopted as an element of the *King County Comprehensive Plan*. More information on the financial analysis and supporting policies is provided in Chapter 8 of the *King County Comprehensive Plan*.
- **Intergovernmental Coordination.** King County contacted adjacent cities, counties, and transit agencies as part of its update to the Transportation Needs Report. Additionally, the Puget Sound Regional Council's Travel Model informs preparation of the Transportation Needs Report, and the relevant capacity project needs identified in the report are also included as part of the Puget Sound Regional Council's adopted *Regional Transportation Plan 2022-2050*, a key input in the agency's regional travel demand analysis.
- **Transportation Demand Management.** King County includes transportation demand management (TDM) strategies in its policies, codes, and project implementation, as well as providing support for others through its transit, rideshare, and market strategies. Chapter 8 of the *King County Comprehensive Plan* and the Transportation Inventory of this appendix contain more information on King County TDM-related efforts.
- **Active Transportation.** King County's Transportation Needs Report and Regional Trails Needs Report identify candidate improvements for active transportation facilities in support of enhanced community

86 access, multimodal transportation, recreation, and healthy lifestyles. Chapter 8 of the *King County*
87 *Comprehensive Plan* provides additional detail regarding this topic.

- 88 • **Concurrency.** The Concurrency program is described in Chapter 8 of the *King County Comprehensive*
89 *Plan*.
- 90 • **Consistency of Plans.** The *King County Comprehensive Plan* is consistent with the Puget Sound
91 Regional Council's *Regional Transportation Plan 2022-2050*, the regional transportation plan for the
92 four-county region. The *Regional Transportation Plan* is consistent with the region's urban growth
93 strategy, *VISION 2050*, which is also developed by the Puget Sound Regional Council. The Puget Sound
94 Regional Council reviews the *King County Comprehensive Plan* for consistency and has certified its
95 previous versions and amendments. The *King County Comprehensive Plan* provides policy direction for
96 the development of the County's related functional plans.

97 II. King County Arterial Functional Classification

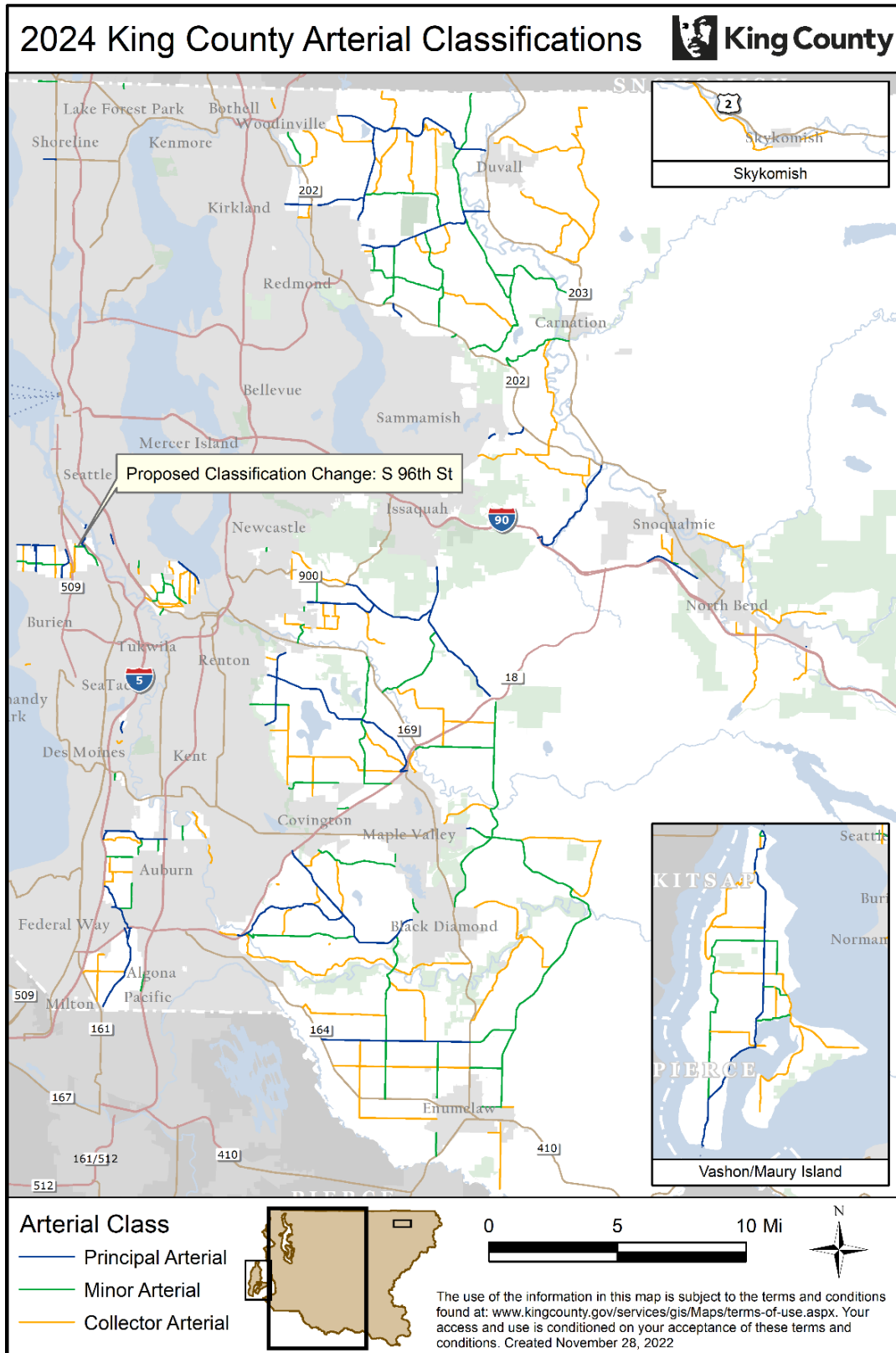
98 Arterial functional classification is the designation of highways, roads, and streets into groups according to
99 the function each road serves or is intended to provide. A foundational principle to this grouping process is
100 that individual roads do not serve travel independently; instead, most travel involves movement through a
101 network of roads. Functional classification helps to define the part that any individual road will play in
102 serving traffic through the road system. There are two primary functions of a road: to provide mobility for
103 users, and to provide access to adjacent land uses. Functional street classification is an important tool for
104 planning a transportation or roadway system, as well as in designing and constructing individual facilities.
105 The classification system and King County Road Standards are used to distinguish between different types
106 of roads for planning analyses, road design, and the allocation of public funds for transportation
107 improvements.

108
109 In unincorporated King County, there are three types of arterial functional classifications:

- 110 • **Principal Arterials** - Provide for movement across and between large subareas of an urban region and
111 serve primarily through traffic with minimum direct access to neighboring land uses. Note that
112 freeways and major highways under the jurisdiction of the Washington State Department of
113 Transportation that fall within unincorporated King County also meet this definition, and are
114 sometimes also referred to as Principal Arterials.
- 115 • **Minor Arterials** - Provide for movement within the larger subareas bound by principal arterials. A
116 minor arterial may also serve through traffic but provides more direct access to adjacent land uses than
117 does a principal arterial.
- 118 • **Collector Arterials** - Provide for movement within smaller areas which are often definable
119 neighborhoods, and which may be bound by arterials with higher classifications. Collectors serve very
120 little through traffic and serve a high proportion of local traffic requiring direct access to adjacent
121 properties. Collector arterials provide the link between local neighborhood streets (i.e. non-arterials)
122 and larger arterials.

123
124 The current adopted arterial classifications and one new reclassification are shown below in Figure 1, "2024
125 King County Arterial Functional Classification Change"; the proposed reclassification is described in Table 1.
126

127 **Figure 1. 2024 King County Arterial Functional Classification Change**



129

Table 1. 2024 King County Arterial Functional Classification Change

Road	Limits	King County Arterial Functional Classification	
		Existing	Proposed
S 96th Street	8th Avenue S to Des Moines Memorial Drive S	Collector	Minor

130

131

III. Regionally Significant State Highways Level of Service Standards

132

133

Level of service standards for Regionally Significant State Highways are adopted by the Puget Sound Regional Council. Level of Service standards for Highways of Statewide Significance are set by the

134

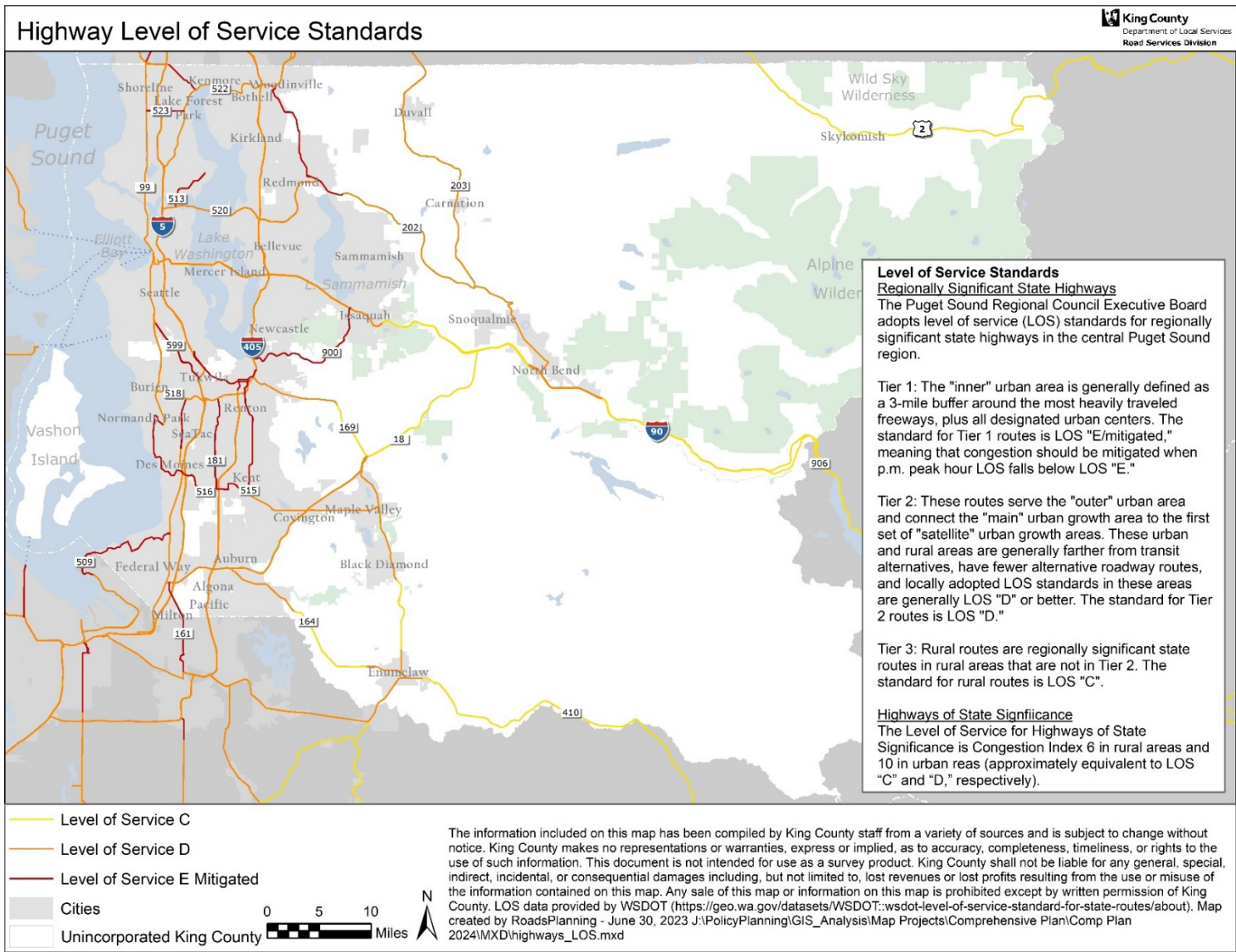
Washington State Department of Transportation. These highway level of service standards are shown below

135

in Figure 2, "Highway Level of Service Standards."

136

137 **Figure 2. Highway Level of Service Standards**



139 IV. Transportation Inventory

140 A. Introduction

141 1. Requirements

142 The Growth Management Act (RCW 36.70A.070(6)(A)) requires an inventory of air, water, and land
143 transportation facilities and services, including transit alignments, and general aviation facilities, to define
144 existing capital facilities and travel levels as a basis for future planning. The inventory must include state-
145 owned transportation facilities within the unincorporated King County boundaries. This document fulfills this
146 requirement by describing King County's multimodal transportation system and by identifying available
147 resource materials.

148 2. Process

149 The County's approach to the inventory construction is that of reference, rather than collection. This
150 approach will enable planners to evaluate inventory information and determine what data will best meet
151 their studies' requirements. Even though the scope of the Comprehensive Plan Transportation Element is
152 primarily focused on unincorporated King County, the scope of the Transportation Inventory is generally
153 countywide.

154 3. Coordination

155 The regional coordination of land use and transportation is mandated by the Growth Management Act
156 (RCW 47.80.010). King County has taken an active role in assuring a regionally coordinated transportation
157 system. In cooperation with other central Puget Sound jurisdictions, King County is striving toward a
158 regional approach to important planning issues such as level of service, concurrency, locations of regional
159 and countywide transportation facilities, financing, active transportation, and transportation demand
160 management.

161 4. Organization

162 The inventory is organized into three categories—(1) an inventory of air transportation facilities and services;
163 (2) an inventory of marine transportation facilities and services; and (3) an inventory of land transportation
164 facilities and services.

165 B. Air Transportation System

166 The Growth Management Act requires an inventory of the air transportation system to define existing capital
167 facilities and travel levels as a basis for future planning. The air transportation system plays an important role
168 as part of the regional and national transportation network because it provides for quick and efficient
169 intrastate, interstate, and international travel of passengers and cargo.

170
171 King County public-use airports represent an essential element of the county's transportation system and
172 provide critical support to the King County economy. Sixteen airports are located within King County. The
173 King County airports span a broad range in terms of scale and role, from the Port of Seattle, Seattle-Tacoma
174 International Airport to King County International Airport-Boeing Field, to seaplane facilities and small
175 privately owned airstrips. The King County airport inventory consists of public-use and privately owned
176 airport facilities which are open to the public.

177
178 The Puget Sound Regional Council's *2011 Air Compatible Land Use Program Update Study* included a wide
179 variety of activities related to planning and support for the central Puget Sound region's public-use airport
180 system. Program activities were included such as airport ground access planning, regional air cargo

181 planning, cooperative efforts with the Washington State Department of Transportation Aviation Division in
182 planning for long-range airport capacity, and ongoing efforts to address airport-compatible land use under
183 the Puget Sound Regional Council's Growth Management Act authority.¹ The Washington State Department
184 of Transportation released an update to the Washington Aviation System Plan in July 2017. The state
185 Aviation System Plan is currently being updated with a projected completion date in 2024.²

186
187 King County International Airport began an airport master plan update in 2023.

188
189 Additional information on King County International Airport, Port of Seattle, regional, and state planning
190 and inventories are available online.³

191 C. Marine Transportation System

192 The Growth Management Act requires an inventory of the marine transportation system to define existing
193 capital facilities and travel levels as a basis for future planning. The marine transportation system plays an
194 important role in the movement of people and goods within King County, supplying the main commuter link
195 between Seattle's central business district and the west Puget Sound corridor and serving as the hub
196 network for local, regional, and international freight movements.

197
198 The marine passenger transportation system serves the entire Puget Sound region from Tacoma to Sidney,
199 British Columbia. The facilities that serve King County include ferry terminals and vessels servicing ferry
200 routes. Ferry services are provided by Washington State Ferries, King County Marine Division, and Kitsap
201 Transit. Other passenger-only ferry operators, such as Argosy and FRS Clipper, offer more recreational and
202 travel-related services.

203
204 Passenger ferry services provide reliable transportation as regional waterways are not subjected to the
205 typical congestion of the roadway network. As population increases and the demand for additional
206 transportation options grows, more communities are evaluating passenger ferry services as part of the
207 solution. Kitsap Transit has implemented three passenger ferry routes from Kitsap County to downtown
208 Seattle since 2017. The cities of Tacoma and Des Moines are studying routes from the south Sound to
209 downtown Seattle, including a pilot program to test interest in additional Puget Sound service. Studies are
210 also underway to evaluate possible passenger ferry service on Lake Washington and Lake Union. Additional
211 information on future passenger ferry services is available online.⁴

212 1. Washington State Ferries

213 Washington State Ferries, established in 1951, is the largest ferry system in the United States, and the
214 second largest in the world. The system includes 20 terminals and 21 vehicle ferries, carrying over 24.5
215 million passenger and vehicle trips annually (before the COVID-19 pandemic). A vehicle reservation system
216 (on select routes) spreads demand and reduces capital improvement costs associated with traffic control.

217
218 Washington State Ferries provides service to 20 communities in eight counties, including King County. The
219 vital system functions as both a marine highway and as a transit service provider. Washington State Ferries
220 provides frequent mainland access to several island communities, including Vashon-Maury Island in King
221 County, Bainbridge Island in Kitsap County, Whidbey Island in Island County, and San Juan, Orcas, Lopez,
222 and Shaw Islands in San Juan County. Washington State Ferries takes people to and from work in the
223 downtown Seattle business corridor and to other communities on the east and west sides of Puget Sound.

¹ See a list of all general and commercial airports in Washington State at wsdot.wa.gov/travel/aviation/airports-list (accessed September 5, 2023).

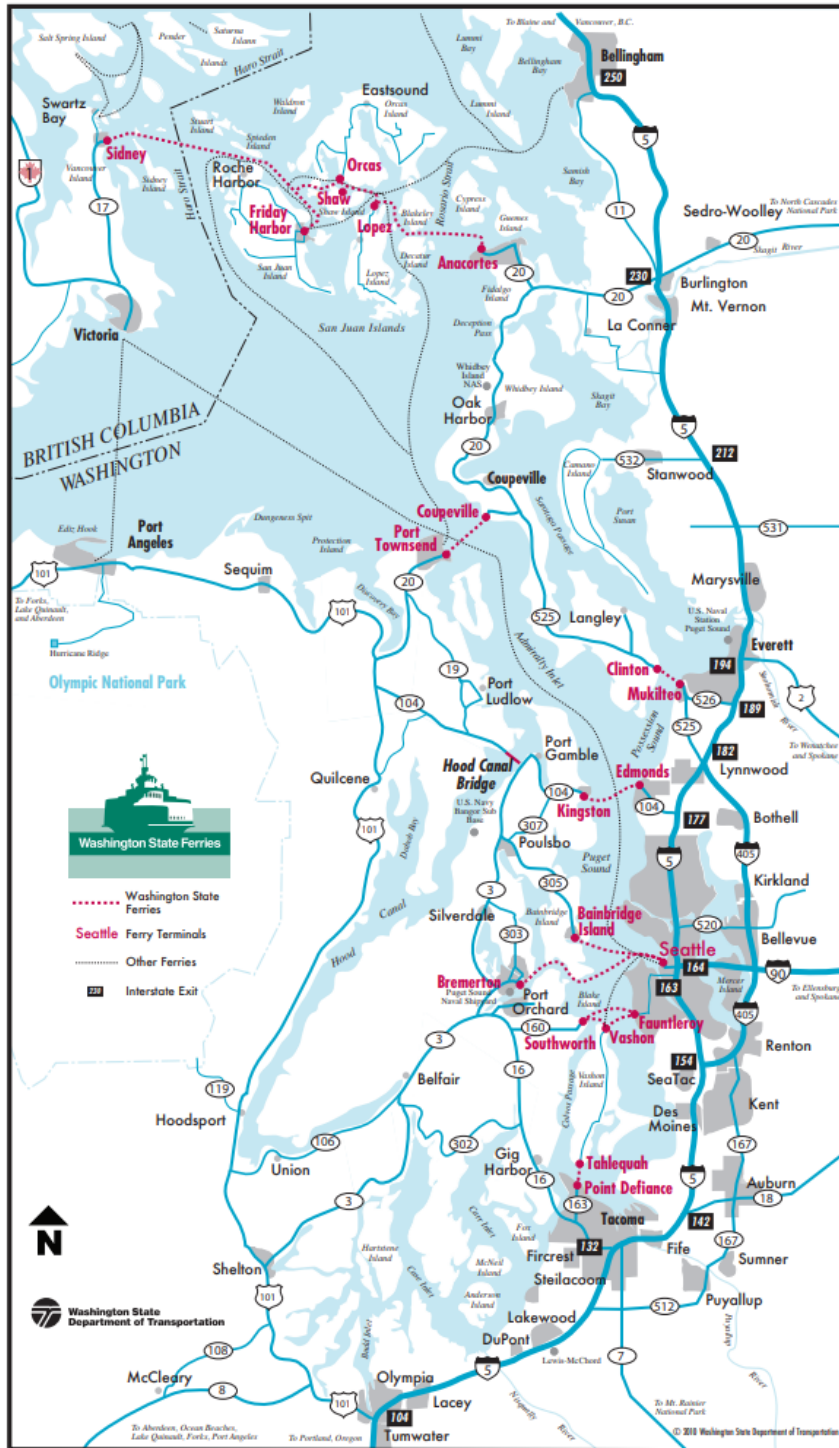
² Washington State Department of Transportation, Washington Aviation System Plan, [\[LINK\]](#) (accessed September 5, 2023).

³ See additional air transportation information from King County at kingcounty.gov/en/legacy/services/airport/planning (accessed September 25, 2023), Seattle-Tacoma International Airport at portseattle.org/page/airport-statistics (accessed September 25, 2023), and PSRC at psrc.org/our-work/air-transportation (accessed September 25, 2023).

⁴ See additional ferry information from the City of Tacoma at <http://cms.cityoftacoma.org/pds/fastferrystudyresults.pdf> (accessed September 25, 2023) and the City of Des Moines at desmoineswa.gov/doing_business/economic_development/passenger_ferry_studies (accessed September 25, 2023).

224 Detailed information about the Washington State Ferry System and the 2040 Long-Range Plan are available
 225 online.⁵ Washington State Ferries routes are shown in Figure 3, "Washington State Ferries Route Map."
 226
 227

Figure 3: Washington State Ferries Route Map⁶



228

⁵ See additional ferry information from the Washington State Department of Transportation at wsdot.wa.gov/travel/washington-state-ferries (accessed September 25, 2023) and wsdot.wa.gov/travel/washington-state-ferries/about-us/washington-state-ferries-planning/washington-state-ferries-long-range-plan (accessed September 25, 2023).

⁶ Washington State Ferries, Route Map, [LINK] (accessed October 24, 2022).

229 **2. King County Metro Transit Department Marine Division**

230 The King County Metro Transit Department Marine Division is responsible for the operations, moorage, and
231 maintenance of the vessels that provide passenger-only ferry services in King County. Passenger-only ferry
232 services are currently provided between downtown Seattle, Vashon-Maury Island, and West Seattle.
233

234 The Marine Division operates out of three terminals: Pier 50 in downtown Seattle is home to a King County-
235 owned ferry terminal and is a part of the Colman Dock multimodal hub; the ferry dock on Vashon-Maury
236 Island is leased from Washington State Ferries; and the West Seattle ferry dock, located at Seacrest Park, is
237 leased from the Seattle Parks Department. The King County Marine Division owns a moorage and
238 maintenance barge located at Pier 48 on the Seattle waterfront.
239

240 The Marine Division owns three vessels: the MV Sally Fox, the MV Doc Maynard, and the MV Spirit of
241 Kingston. The MV Sally Fox and MV Doc Maynard were constructed for the Marine Division in 2014 - 2015
242 and are each certified for a capacity of 278 passengers. The MV Spirit of Kingston is a 150-passenger vessel
243 and is used to back up the two in-service vessels. Each vessel operates with a crew of three.
244

245 In 2019, King County's Water Taxi provided service for over 700,000 passengers (pre-pandemic)
246 systemwide. Water taxi ridership declined with the pandemic, as did ridership on other Metro services, but
247 is recovering. As of September 2022, there were more than 334,000 boardings in 2022. Routes are shown in
248 Figure 4, "King County Water Taxi Route Map."
249

250 **Figure 4: King County Water Taxi Route Map**



251
252
253 Additional information on King County ferry services is available online.⁷

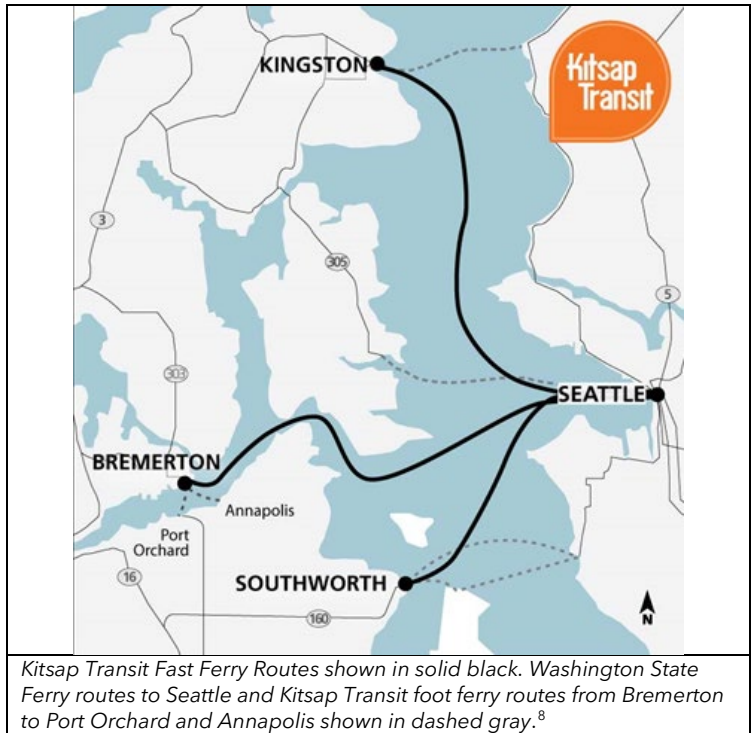
254 **3. Kitsap Transit Fast Ferry**

255 Kitsap Transit launched its passenger-only ferry service in 2017, following voter approval of a dedicated
256 sales tax for passenger-only ferry service. Today, Kitsap Transit operates Kitsap Fast Ferries year-round
257 connecting Seattle to Bremerton, Kingston, and Southworth on the Kitsap Peninsula. All three routes

⁷ See additional ferry information from King County at kingcounty.gov/depts/transportation/water-taxi (accessed September 25, 2023).

258 connect to Pier 50 in Seattle and coordinate landings and departures with the King County Marine Division.
259 Kitsap Transit operates weekday service during peak commute hours and on Saturdays, typically from May
260 through September. The service area of the Seattle-Bremerton ferry route is extended through two
261 connecting two Local Foot Ferry routes; these routes connect Bremerton to Port Orchard and Annapolis and
262 are heavily used by workers at the Puget Sound Naval Shipyard in Bremerton. Both Local Foot Ferries
263 operate year-round; the Port Orchard Foot Ferry operates seven days a week, while the Annapolis Foot
264 Ferry operates on weekdays only. Ferry routes serving King and Kitsap counties are shown in Figure 5,
265 "Kitsap-King County Ferry Routes."
266

267 **Figure 5: Kitsap-King County Ferry Routes**



268
269 Although King County's Pier 50 dock was designed to serve two vessels at a time, it currently serves five
270 passenger-only ferry routes (three operated by Kitsap Transit and two operated by King County). To support
271 current service levels and future growth, Kitsap Transit initiated the Seattle Fast Ferry Terminal Project to
272 analyze alternatives in 2020. The project is working with various Seattle waterfront partners, including local,
273 state, federal, and tribal governments. The goal of the project is to identify a suitable location for Kitsap
274 Transit's existing fast-ferry routes that allows for potential future routes.
275

276 Kitsap Transit owns its Bremerton passenger-only ferry dock and leases its Kingston dock from the Port of
277 King. Vessels for those routes are moored at these docks when not in service. For the Southworth route,
278 Kitsap Transit moors its primary vessel at its Bremerton dock and shares use of the Southworth dock with
279 Washington State Ferries. Kitsap Transit and Washington State Ferries are jointly pursuing development of a
280 second landing site at Southworth.
281

282 Additional information on Kitsap ferry services is available online.⁹
283

⁸ Kitsap Transit, Fast Ferry System Map [\[LINK\]](#) (accessed October 24, 2022).

⁹ See additional ferry information from Kitsap Transit at kitsaptransit.com/service/category/fast-ferry (accessed September 25, 2023).

284 4. Port of Seattle Marine Facilities and Services

285 The Port of Seattle plays a key role in the maritime sector in the Pacific Northwest. Through commercial
286 fishing, cargo shipping, cruise tourism, recreational boating, maritime industrial development, and trade
287 and tourism development, the Port of Seattle and local maritime industries make the region more globally
288 competitive while directing investments toward economic development and environmental and community
289 health. The Port operates or leases:

- 290 • Passenger cruise ship terminals: Smith Cove Terminal at Terminal 91 and Bell Street Terminal at Pier 66.
- 291 • FRS Clipper terminal: Victoria Clipper/Clipper Navigation fast ferry service at Pier 69.
- 292 • Fishing and commercial moorages, grain terminal: Fishermen’s Terminal; Maritime Industrial Center;
293 Terminal 91; Terminal 18 dolphins; Pier 34 dolphins; and the north end of Terminal 46 and Terminal 86
294 Grain Terminal.
- 295 • Recreational boating marinas: Bell Harbor, Fisherman’s Terminal, Harbor Island, Salmon Bay, and
296 Shilshole Bay.
- 297 • Conference centers: Bell Harbor Conference Center, and World Trade Center.
- 298 • Parks and monuments: t̩at̩at̩ucid Park and Shoreline Habitat (formerly 8th Avenue Park/T18 Park), Bridge
299 Gear Monument Park, Centennial Park, Duwamish River People’s Park and Shoreline Habitat (formerly
300 T117), Jack Block Park, Jack Perry Park, Seattle Fisherman’s Memorial, t̩uʔ̩alalt̩x̩w Village Park and
301 Shoreline Habitat (formerly T105 Park), h̩əʔ̩apus Village Park and Shoreline Habitat (formerly T107 Park),
302 and sb̩əq̩w̩aʔ̩ Park and Shoreline Habitat (formerly T108/Diagonal Park).

303
304 Additional information on Port of Seattle maritime activities, facility plans, and service and activity levels are
305 available online.¹⁰

306 5. Northwest Seaport Alliance Marine Facilities and Services

307 In 2015, the ports of Seattle and Tacoma formed a marine cargo operating partnership, the Northwest
308 Seaport Alliance. The Alliance is the fourth-largest container gateway in the United States. It is a major
309 center for containerized cargo, bulk, breakbulk, project/heavy-lift cargoes, automobiles, and trucks. It
310 connects to the second-largest concentration of distribution centers on the West Coast. The Alliance has five
311 containerized cargo terminals in the North Harbor (Elliott Bay/Duwamish River in King County), including
312 Terminal 5, Terminal 18, Terminal 30, Terminal 46, Terminal 115, and other industrial land and facilities.

313
314 Information regarding the Alliance’s services and facilities can be found online.¹¹

315 D. Land Transportation System

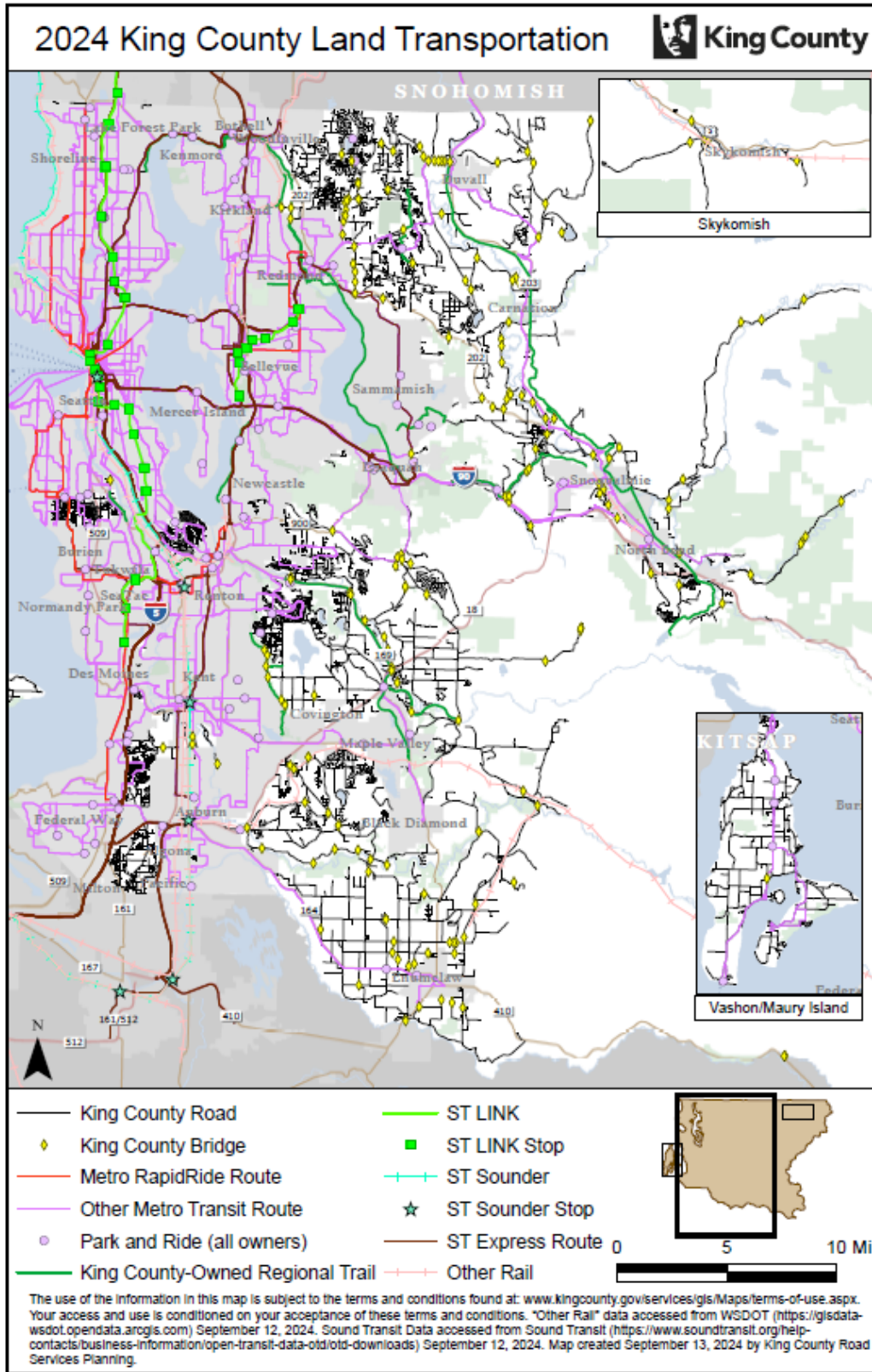
316 This section includes a wide range of information and references for land transportation related facilities,
317 services, and transportation demand management programs in King County. This information provides a
318 foundation for the Comprehensive Plan transportation element and for future transportation planning.
319 Significant components of the land transportation system are shown in Figure 6, “2024 King County Land
320 Transportation” and Figure 7, “Unincorporated King County Sidewalks”.

321

¹⁰ See additional Port of Seattle maritime inventory and activities information at portseattle.org/maritime/maritime-home (accessed September 25, 2023), with detailed information on fishing and commercial moorage at portseattle.org/maritime/fishing-commercial-moorage (accessed September 25, 2023), conference centers at portseattle.org/places/conference-centers (accessed September 25, 2023), and waterfront parks at portseattle.org/community/waterfront-parks (accessed September 25, 2023).

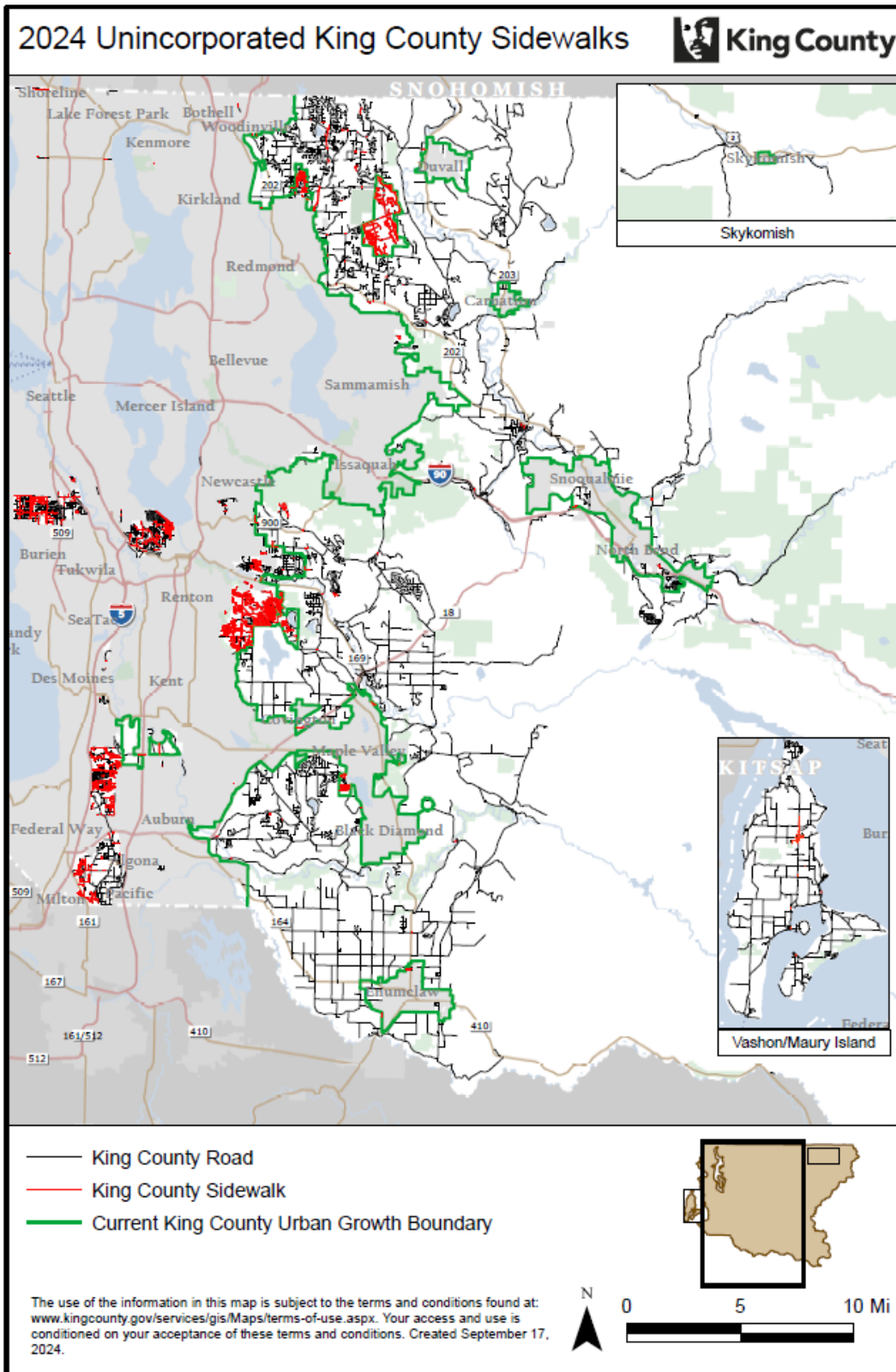
¹¹ See additional Northwest Seaport Alliance Marine facilities and services information at nwseaportalliance.com (accessed September 25, 2023).

322 **Figure 6: 2024 King County Land Transportation**



323

324 **Figure 7: Unincorporated King County Sidewalks**



326 1. Unincorporated King County Roads

327 King County maintains a detailed inventory of assets that comprise the county's unincorporated roadway
328 system. Physical features include information on pavement type, roadway and shoulder width, number of
329 lanes, medians, retaining and sea walls, guardrails, sidewalks, and walkways. Administrative features include
330 information such as the roadway's functional classification, its comprehensive plan designation, and location
331 in the urban area, rural area, or natural resource lands. The unincorporated road system owned and
332 managed by the Department of Local Services Road Services Division includes the following asset inventory
333 (numbers are approximate):¹²

- 334 • 1,467 miles of roadway
- 335 • 185 bridges, including several jointly owned with cities
- 336 • 275 miles of sidewalk
- 337 • 723 marked crosswalks
- 338 • 49,000 traffic control signs
- 339 • 79 traffic signals
- 340 • 58 traffic cameras
- 341 • 118 miles of protective guardrail
- 342 • 4.6 million feet of drainage ditch
- 343 • 3.5 million feet of drainage pipe

344 345 *Pavement*

346 Pavement deteriorates naturally over time. As it ages, the pavement and underlying road base become
347 increasingly susceptible to the impacts of stormwater, weather and temperature changes, and growing
348 traffic volumes. The Road Services Division monitors the condition of unincorporated King County roads by
349 assessing and tracking pavement condition over time. The Road Services Division conducts regular field
350 assessments of all roadways to visually determine the condition of the pavement using the County Road
351 Administration Board visual data collection system. Arterial roads are inspected every two years and local
352 roads are inspected every three years. Current road resurfacing project information is available online.¹³

353 354 *Bridges*

355 The Road Services Division owns and maintains 185 bridges in the unincorporated area of King County.
356 Built over many generations, these bridges are made of concrete, steel, timber, or a combination of the
357 three building materials. King County's bridge inventory includes long span bridges (those over 20 feet in
358 span length, which appear on the national bridge inventory), short span bridges, pedestrian bridges, and
359 safety enhancement bridges that keep wildlife off roadways. King County's bridge inventory includes:

- 360 • 181 vehicular bridges
- 361 • 3 pedestrian bridges
- 362 • 1 safety corridor bridge

363
364 An updated list of bridge needs is included in the Annual Bridge Report, which is prepared each year by the
365 Road Services Division to fulfill the requirements of Washington Administrative Code (WAC) 136-20-060.
366 The Road Services Division is required to review and update its list of bridge needs for

¹² Based on best available data from fall 2022 inventory data. Data represents a point in time and can change slightly throughout the year.

¹³ See additional road resurfacing information at kingcounty.gov/depts/transportation/roads/paving-projects (accessed September 25, 2023).

367 replacement/rehabilitation, seismic retrofit, and re-decking annually, preparatory to the Capital
368 Improvement Program budgeting process. The King County Annual Bridge Report is available online.¹⁴
369

370 *Roadside Barriers (Guardrails)*

371 One way King County promotes safety on county-maintained unincorporated roads is by installing new
372 guardrails, repairing existing barriers and rails, and upgrading older guardrails to meet current roadway
373 standards. The unincorporated road network includes approximately 118 miles of guardrail.
374

375 *Traffic Control Devices*

376 Traffic control devices are signals and information systems used to regulate, warn, or guide both vehicular
377 and pedestrian traffic. These devices are placed on, over, or adjacent to a roadway, pedestrian path, or
378 shared-use path. Examples of traffic control devices include traffic signals, signs, and pavement markings.
379 Information on traffic control devices can be found online.¹⁵
380

381 *Traffic Counts*

382 Unincorporated area traffic counts can be found online.¹⁶
383

384 *Safety*

385 The Road Services Division produces an annual traffic safety report. This report reviews collision trends
386 within unincorporated King County in an ongoing effort to reduce the number and severity of collisions. The
387 report is intended to provide critical information that can be used to better allocate limited safety funds,
388 increase driver awareness of safety concerns, and improve the safety of the traveling public. King County
389 Traffic Safety Reports and Washington State Department of Transportation statewide travel and collision
390 data are available online.¹⁷
391

392 *Maintenance Facilities*

393 The Road Services Division is responsible for enhancing and maintaining nearly 1,500 miles of paved
394 roadway. More information on maintenance services and activities, including a map of maintenance
395 divisions and shop locations, is available online.¹⁸
396

397 *King County Heritage Corridors*

398 In an effort to preserve the county's transportation history, King County has identified nine "Heritage
399 Corridors" in unincorporated King County. These corridors represent King County's history through its most
400 formative decades of development, from the 1870s through the 1930s. They touch on industrial,
401 commercial, agricultural, and maritime themes. Identification of these Heritage Corridors helps the county
402 maintain and operate its historic and scenic roads in keeping with their unique character.
403

404 The Heritage Corridors program includes public education materials that enhance the public's travel
405 experience and lead to a greater understanding and appreciation of the region's transportation history. The
406 county also encourages adjacent private property owners to support the preservation of the corridors.
407

408 The identified Heritage Corridors are:

- 409 • Cedarhurst Road / Westside Highway, Vashon-Maury Island
- 410 • Dockton Road, Vashon-Maury Island
- 411 • Green Valley Road, Auburn-Black Diamond

¹⁴ See Annual Bridge Reports at kingcounty.gov/depts/transportation/roads/bridges (accessed September 25, 2023).

¹⁵ See additional county traffic control device information at kingcounty.gov/depts/transportation/roads/traffic (accessed September 25, 2023).

¹⁶ See additional county traffic count information at gismaps.kingcounty.gov/TrafficCounts (accessed September 25, 2023).

¹⁷ See additional collision information for the county at kingcounty.gov/en/dept/local-services/transit-transportation-roads/roads-and-bridges/road-services/traffic/traffic-safety-reports (accessed September 25, 2023) and for the state at wsdot.wa.gov/about/transportation-data (accessed September 25, 2023).

¹⁸ See additional maintenance services and facility information at kingcounty.gov/depts/transportation/roads/road-maintenance (accessed September 25, 2023).

- 412 • Issaquah-Fall City Road, Snoqualmie Valley
- 413 • Osceola Loop, Enumclaw Plateau
- 414 • West Snoqualmie River Road, Snoqualmie Valley
- 415 • West Snoqualmie Valley Road / Carnation Farm Road, Snoqualmie Valley
- 416 • Old Cascade Scenic Highway, Stevens Pass
- 417 • Old Sunset Highway, Snoqualmie Pass

418
419 Information about King County’s Heritage Corridors, including maps and final report, are available online.¹⁹

420 2. State and Federal Highways within King County

421 *Major Highways*

422 The State Highways of Washington comprise a network of state highways, including all Interstate and U.S.
423 Highways that pass through the state, maintained by the Washington State Department of Transportation.
424 Four Federal Highways and twenty-three State Highway Routes are located in King County. All state
425 highways are designated by the Washington State Legislature. Maps of the State Highways can be viewed
426 online.²⁰

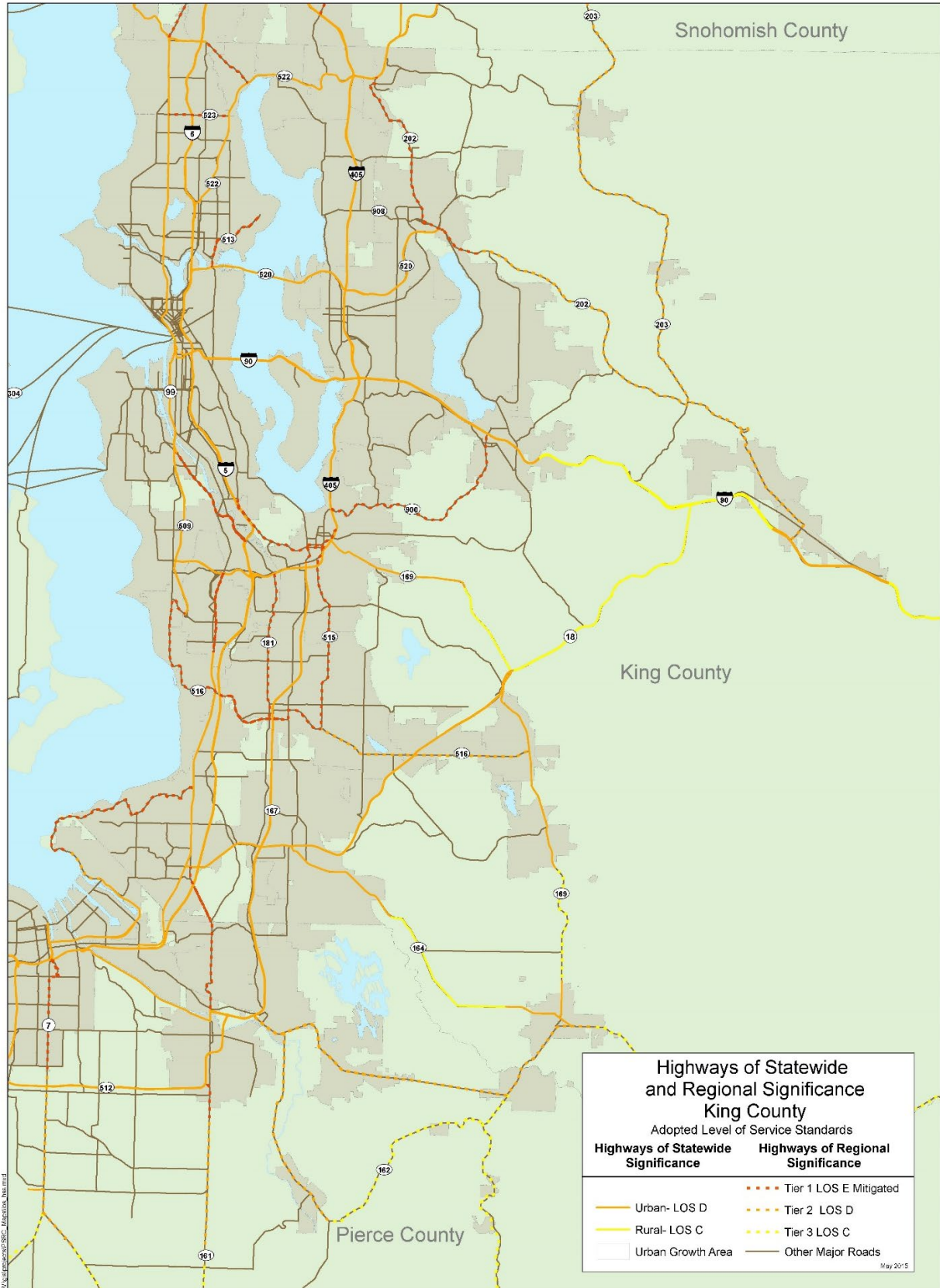
427 428 *Highways of Statewide Significance*

429 Highways of Statewide Significance include interstate highways and other state principal arterials that are
430 needed to connect major communities in the state. The designation helps assist with the allocation and
431 direction of funding. A map of Highways of Statewide Significance is shown in Figure 8.

¹⁹ See additional King County Heritage Corridor information at kingcounty.gov/depts/transportation/roads/historic-corridors (accessed September 25, 2023).

²⁰ See maps of the state highways at wsdot.wa.gov/travel/printable-maps (accessed September 25, 2023).

432 **Figure 8: Highways of Statewide and Regional Significance.**



433

434
435 *Washington State Scenic and Recreational Highways*
436 Washington's Scenic and Recreational Highways, as designated in RCW 47.39, are important access routes
437 to some of the most scenic resources and best recreational destinations in the state. In King County there
438 are approximately 100 miles of designated Scenic and Recreational Highways and 30 miles of designated
439 Scenic and Recreational ferry routes. King County Scenic and Recreational Highways include portions of I-90
440 (Mountains to Sound Greenway), US 2 (Stevens Pass Greenway), SR 410 (Chinook Pass Scenic Byway), and
441 SR 202 (Cascade Valleys Scenic Byway). A map of Washington Scenic and Recreational Highways is available
442 online.²¹

443
444 *High Occupancy Vehicle System*
445 The High Occupancy Vehicle (HOV) system is an important element of King County's and the region's
446 multimodal transportation system. HOV lanes—also known as carpool lanes, commuter lanes, diamond
447 lanes, or bus lanes—are reserved for vehicles containing at least a specified number of occupants (such as
448 two or more) or for transit vehicles. Such lanes can be on highways, arterials, or metered entrance ramps to
449 highways. They may be physically separated from other lanes or indicated with signage. Some operate only
450 during certain hours. Other types of strategies that potentially promote higher vehicle occupancy include
451 ridesharing programs, parking management, guaranteed ride home policies, and other employer-based
452 programs.

453
454 Coupled with the county's Transportation Demand Management program, HOV facilities are designed to
455 help accommodate growth by moving more people in fewer vehicles, reducing the need for new road
456 construction or major widening projects on the county's existing arterial system. The HOV system includes
457 direct access ramps to support Sound Transit's regional bus service, as well as freeway-to-freeway
458 improvements to connect the system. The HOV system is a crucial part of the central Puget Sound area's
459 highway system, carrying more than one-third of freeway travelers during rush hours. Information on the
460 HOV system, including a system map, is available online.²²

461 3. Transit Services

462 Transit services in King County are provided by four public transit agencies and the City of Seattle. King
463 County Metro Transit (Metro) provides most regular bus service, including RapidRide bus rapid transit, and
464 flexible mobility options available to King County residents. Pierce Transit and Community Transit provide
465 commuter bus services into King County urban centers including downtown Seattle, downtown Bellevue,
466 the University District in Seattle, and Federal Way in south King County. Sound Transit provides regional
467 high-capacity transportation throughout parts of King, Pierce, and Snohomish counties through commuter
468 rail (Sounder), light rail (Link), and a regional express bus system (ST Express). Link light rail and ST Express
469 bus service within King County are currently operated and maintained by Metro Transit under contract to
470 Sound Transit. The Seattle Department of Transportation provides streetcar service in and near downtown
471 Seattle. This streetcar service is also currently operated and maintained by Metro Transit under contract to
472 the City of Seattle.

473
474 *King County Metro Transit*
475 As the largest public transportation agency in the Puget Sound region, Metro is creating a world-class,
476 integrated public transportation network. Metro serves customers with a wide range of mobility services
477 including providing and funding bus, paratransit, Vanpool, water taxi, and flexible services; and by
478 operating the Seattle Streetcar, Sound Transit Link light rail, and Sound Transit Express bus services in King
479 County. Metro operates more than 180 bus routes and has more than 7,400 bus stops (as of 2021). In 2022,
480 Metro operated approximately 3.7 million annual service hours of fixed route and DART services (excluding
481 Sound Transit services and flexible services).

482

²¹ See map of Washington Scenic and Recreational Highways at gisdata-wsdot.opendata.arcgis.com/datasets/WSDOT::wsdot-scenic-byways (accessed September 25, 2023).

²² See additional HOV system information at wsdot.wa.gov/travel/roads-bridges/hov-lanes (accessed September 25, 2023).

483 In 2019, before the COVID-19 pandemic, Metro fixed-route services delivered more than 130 million
484 passenger trips. Ridership declined during the pandemic, but is currently recovering. In 2021, Vanpool saw
485 over 509,000 boardings, Access had more than 557,000 boardings, and fixed route (bus and DART)
486 experienced more than 50 million boardings. As of November 2022, Metro is now serving five million riders
487 per month as more people choose transit.
488

489 The Strategic Plan for Public Transportation, Metro Connects (Metro’s long-range plan), and Service
490 Guidelines were updated in 2021. The updated policies which include a much stronger emphasis on equity
491 and climate change. Metro’s goal is to help align its funding, policies, and investments to deliver livable
492 communities, a thriving economy for all, and a sustainable environment. More information on Metro
493 policies; routes, schedules, and maps; and system performance can be found online.²³
494

495 **Metro Services**

496 Metro offers a wide range of mobility services including providing and funding bus, paratransit, Vanpool,
497 water taxi, and flexible services; and by operating the Seattle Streetcar, Sound Transit Link light rail, and
498 Sound Transit Express bus services in King County. Metro’s fixed route bus services include RapidRide,
499 frequent, express, and local service. More information about many of Metro’s services is included below.

- 500 • **RapidRide** - RapidRide, Metro’s arterial bus rapid transit network, launched in 2010. As of 2022, Metro
501 operates seven RapidRide lines throughout King County, with five more scheduled to begin service by
502 2030. RapidRide separates itself from standard bus service with high frequency (every 10 minutes
503 during peak hours, every 15 minutes during off-peak periods), fewer stops, use of semi-exclusive lanes,
504 and all-door passenger boarding and exiting. Metro is looking to the future to determine how to
505 continue to provide quality service to King County residents and businesses. Metro Connects calls for a
506 significant expansion of the RapidRide program. By 2050, Metro plans to operate a minimum of 19
507 lines, providing this service to all areas of urban King County. Additional information on RapidRide is
508 available online.²⁴
- 509 • **Flexible services** - Flexible services are transportation services that do not operate using a fixed route
510 and are tailored to meet specific community needs. Flexible services may or may not serve designated
511 stops or hubs, depending on service design. Metro plans and provides a range of flexible services, with
512 partner support, to parts of King County where the infrastructure, density, or land uses are not optimal
513 for traditional fixed-route bus service and could benefit from new approaches and complementary
514 services. Flexible services are an important part of Metro’s efforts to deliver transportation alternatives
515 across King County in an equitable and sustainable way. More information on Metro’s on-demand
516 flexible services options is available online.²⁵
- 517 • **Access Paratransit** - Access Paratransit is Metro’s response to the Americans with Disabilities Act, which
518 requires transit agencies to provide paratransit services for people who cannot use regular, fixed-route
519 transit. It is a primarily van-operated, demand-responsive service with variable routes and schedules.
520 Access provides trips to eligible people with disabilities who are unable to use Metro’s fixed-route or
521 DART service. Passengers must apply and be found eligible to use Access service before making a trip.
522 Access Paratransit vehicles are owned by Metro and operated and maintained by a third-party
523 contractor. Additional information on the Access ADA Paratransit Program can be found online.²⁶

²³ See additional Metro policy information at kingcounty.gov/depts/transportation/metro/about/policies (accessed September 23, 2023); Metro routes, schedules, and maps at kingcounty.gov/en/dept/metro/routes-and-service/schedules-and-maps (accessed September 23, 2023); and other Metro system and performance information at kingcounty.gov/en/dept/metro/about/data-and-reports (accessed September 23, 2023).

²⁴ See additional RapidRide information at kingcounty.gov/depts/transportation/metro/travel-options/bus/rapidride (accessed September 23, 2023).

²⁵ See additional Metro flexible services information at kingcounty.gov/depts/transportation/metro/travel-options/on-demand (accessed September 25, 2023) and Community Van program information at kingcounty.gov/en/dept/metro/travel-options/community-van (accessed September 25, 2023).

²⁶ See additional Access ADA Paratransit Program information at kingcounty.gov/en/dept/metro/travel-options/accessible-services (accessed September 25, 2023).

- 524 • **Special and Custom Bus Service** - Metro provides special transit services for major community and
525 sporting events in partnership with event sponsors. Information regarding Metro's special event service
526 can be found online.²⁷
- 527 • **Contract Services** - Metro serves as the operator for other transit services in Seattle and King County.
528 Metro operates regional ST Express bus routes in King County as well as Link light rail for Sound Transit.
529 Metro operates the Seattle Streetcar lines for the City of Seattle.
- 530 • **Service Connections** - Metro service connects to a wide range of other transportation services in King
531 County, including bus, rail, ferry, and air travel hubs. Metro provides intermodal connections with Sound
532 Transit Link light rail and Sounder commuter rail service, Amtrak rail service, Washington State Ferries,
533 Kitsap Transit ferries, and Seattle-Tacoma International Airport. Metro also connects with other bus
534 services including Sound Transit, Community Transit, Pierce Transit, and intercity bus service.
535

536 **Metro Programs: Transportation Demand Management, Equity and Social Justice, and Partnerships**

537 Metro offers many programs, products, and services to area employers, other organizations, and individuals
538 to make transit accessible and affordable. These programs are designed to encourage behavior change to
539 reduce reliance on single occupancy vehicle trips, vehicle miles traveled (VMT), and environmental impacts.
540 Major Metro programs include:

- 541 • **ORCA Business Partnerships** - Employers can contract with Metro to provide ORCA cards as
542 subsidized passes for their employees to access public transportation services, including bus, commuter
543 rail, Link light rail, streetcar, ferry, water taxi, Vanpool/Vanshare, and guaranteed ride home services.
544 Employers can select a comprehensive program or a flexible package to suit their needs. Currently,
545 Metro's ORCA Business Passport and ORCA Business Choice programs have more than 1,600
546 participating employers.
- 547 • **ORCA LIFT** - ORCA LIFT provides a discounted transit fare of \$1.00 per trip for residents who earn less
548 than 200 percent of the federal poverty level and are between 19 and 64 years of age. At the end of
549 2021 there were 40,128 valid ORCA LIFT cards. Additional information on ORCA LIFT can be found
550 online.²⁸
- 551 • **Human services bus tickets** - Metro subsidizes bus tickets annually for eligible human services
552 agencies to purchase and distribute to the people they serve. Metro subsidizes 90 percent of the cost of
553 the tickets, for a total annual subsidy of \$4 million. Human services agencies apply to participate in the
554 program. During 2021, the 165 selected agencies distributed more than 983,500 tickets to people in
555 need (human services ticket sales were lower in 2021 due to the COVID-19 pandemic). More
556 information on human service agency tickets is available online.²⁹
- 557 • **Commuter vans (Vanpool/Vanshare)** - The Metro Vanpool program groups five or more commuters
558 to share a ride to work, using a Metro-supplied van. Vanshare is for shorter trips, intended to bridge the
559 gap between public transportation (bus, train, water taxi, or ferry) and a final destination; groups of five
560 or more commuters share the ride to or from a public transit link or transit hub. Metro provides the van
561 and rider support services, maintenance, insurance, fuel, tires, and training for a per-rider monthly fee.
562 More information on commuter vans is available online.³⁰
- 563 • **Community Access Transportation Program** - The Community Access Transportation Program
564 expands mobility options for people with disabilities, people aged 62 years and older, and low-income
565 populations by developing partnerships with community agencies and jurisdictions in King County.
566 Metro provides vehicles and/or operating funds to assist community agencies in setting up their own
567 transportation services.

²⁷ See additional special and custom bus service information at kingcounty.gov/en/dept/metro/riders-tools/local-sports (accessed September 25, 2023).

²⁸ See additional ORCA LIFT information at kingcounty.gov/en/dept/metro/fares-and-payment/discounted-fares/orca-lift (accessed September 25, 2023).

²⁹ See additional human service agency ticket information at kingcounty.gov/depts/community-human-services/housing/services/homeless-housing/bus-ticket-program (accessed September 25, 2023).

³⁰ See additional commuter van information at kingcounty.gov/depts/transportation/metro/travel-options/rideshare/programs/vanpool (accessed September 25, 2023).

- 568 • **Bicycle programs and facilities** - Metro supports bicycling in conjunction with public transportation by
569 providing racks on every bus to accommodate three bicycles, racks on request for Vanpools, racks for
570 multiple bikes on passenger ferries, bicycle lockers at park-and-ride lots and transit centers, and
571 information about getting around by bicycle. Bicycling is also included as a travel option in Metro
572 incentive programs that encourage alternatives to driving alone. More information about bike parking is
573 available in section IV.D.4 of this appendix and online.³¹
- 574 • **Home Free Guarantee** - Metro provides emergency taxi service for commuters who arrive at work
575 without their personal vehicle (by transit, carpool, Vanpool, bicycle, or walking) and have an unplanned
576 emergency or unscheduled overtime. Information on this program can be found online.³²
- 577 • **Job Access Reverse Commute Program** - The Job Access Reverse Commute Transportation Program
578 partners with social service agencies, community-based organizations, housing authorities, local
579 jurisdictions, and employers to assist with transportation issues for low-income individuals. Information
580 on Metro's JARC program can be found online.³³
- 581 • **In Motion Program** - In Motion enlists local businesses, organizations, and communities as partners to
582 encourage people to register as participants and pledge to reduce car trips over a period of time as a
583 challenge to change their behavior. Participants earn rewards for their reduced trips, including
584 commute-based trips or everyday trips. Additional information on In Motion can be found online.³⁴
- 585 • **Just One Trip Program** - The Just One Trip (JOT) Program delivers campaigns in sync with planned
586 Metro service restructures, onboarding of new or flexible mobility services, and major transit system
587 expansions in the region such as the opening of new Link light rail lines. JOT campaigns focus on
588 ensuring new and existing riders are aware of and understand these service changes, how their trip may
589 be adjusted, and what new services have become available to them. The campaigns encourage
590 ridership recovery of lapsed transit riders and share the importance of utilizing the ORCA card transit
591 fare system to ease the payment process and receive the best fare for any trip. Through campaign
592 messaging, the JOT Program strives to help riders make the connection between how their mode
593 choice for any trip-local or regional, personal or commute, peak or mid-day-has an impact on the
594 environment, their health, community safety and quality of life, and incentivizes behavior change. The
595 most recent JOT campaign was related to the opening of North Link/Link Line 1 in fall 2022; it reached
596 thousands of riders in north King County and engaged 7,800 households in an incentive program to
597 recover transit ridership.
- 598 • **Metro Youth Mobility Program** - The Metro Youth Mobility Program (MYMP) works to realize a future
599 where youth access to transit is safe, easy, affordable, and convenient and where today's young people
600 become life-long transit riders. The MYMP is carried out in partnership with local school districts, school
601 administrators, teachers, and community-based organizations to enhance youth access to transit and
602 conduct education and outreach focused on building youth ridership. The MYMP also promotes the
603 Free Youth Transit Pass implemented on September 1, 2022.
- 604 • **Ridership Recovery Program** - The Ridership Recovery Program focuses on partnership with
605 community-based organizations and small/priority businesses to deepen Metro's reach into populations
606 currently served or employed by these entities, including essential and under-employed workers;
607 people with low-incomes, limited-English proficiency, or disabilities; communities of color; and cash-
608 paying riders. The goal is to build upstream capacity to maximize downstream impacts to enhance
609 equitable ridership recovery where needs are greatest in King County and to increase enrollment in
610 reduced fares programs for eligible populations.

³¹ See additional Metro bike facility information at kingcounty.gov/depts/transportation/metro/travel-options/bike (accessed September 25, 2023).

³² See additional Home Free Guarantee Program information at kingcounty.gov/depts/transportation/metro/employer-programs/home-free-guarantee (accessed September 25, 2023).

³³ See additional Job Access Reverse Commute Program information at metro.kingcounty.gov/tops/jobaccess/jobseeker.html (accessed September 25, 2023).

³⁴ See additional In Motion information at kingcounty.gov/depts/transportation/metro/programs-projects/transit-education-outreach/in-motion (accessed September 25, 2023).

611 • **Community Transportation Navigators** - The Community Transportation Navigators is a peer-to-peer
612 transportation outreach and education program focused on identifying and reducing barriers for low-
613 income and limited-English speaking communities to access transportation. Community Navigators are
614 paid community liaisons who have existing connections to the communities they serve, speak the same
615 language of those they engage, have similar lived experiences to those participating in the program,
616 and have experience using public transportation.

617 • **Rideshare Online** - RideshareOnline.com provides free online self-serve ride matching services. The
618 online system matches commuters interested in sharing rides in carpools, commuter vans, group biking,
619 event travel, and with other parents transporting kids to school. Additional information on Metro's
620 Rideshare program can be found online.³⁵

621
622 **Metro Capital Facilities**

623 Metro capital facilities include physical plants, rolling stock (buses and other vehicles), electrical trolley lines
624 and substations, facilities such as park-and-ride lots and bus shelters, and roadway infrastructure developed
625 in partnership with local jurisdictions, such as semi-exclusive bus priority lanes. Voter approved sales tax and
626 federal grants are the primary revenue sources.

627 Metro operates service on the SODO busway, a transit-only roadway between S Spokane Street and Royal
628 Brougham Way in Seattle.

629 • **Physical Plant** - Metro's administrative offices are located at 201 South Jackson Street in downtown
630 Seattle. Metro maintains seven operating bases located throughout the county, with one additional
631 base under construction. Metro purchased an additional base for Access paratransit operations in 2021.
632 Metro has a variety of other physical facilities to support the provision of transit and ridesharing service.
633 Major facilities include:

634 ○ *Central Campus and SODO (Seattle)*

- 635 ▪ Atlantic/Central Bases, 1270 6th Avenue S, Seattle
- 636 ▪ Atlantic Maintenance, 1555 Airport Way S, Seattle
- 637 ▪ Central Maintenance, 640 S Massachusetts Street, Seattle
- 638 ▪ Ryerson Base, 1220 4th Avenue S, Seattle
- 639 ▪ Transit Control Center, 1263 6th Avenue S, Seattle
- 640 ▪ Employee Parking Garage, 1505 6th Avenue S, Seattle
- 641 ▪ Tire and Millwright Shop, 1555 Airport Way S, Seattle
- 642 ▪ Marketing Distribution Center, 1523 6th Avenue S, Seattle
- 643 ▪ Power Distribution, 2255 4th Avenue S, Seattle

644 ○ *Campus & Eastside*

- 645 ▪ Bellevue Base, 1790 124th Avenue NE, Bellevue
- 646 ▪ East Base, 1975 124th Avenue NE, Bellevue
- 647 ▪ Vanpool Distribution, 18655 NE Union Hill Road, Redmond

648 ○ *Tukwila*

- 649 ▪ South Base, 12100 East Marginal Way S, Tukwila
- 650 ▪ Interim Base, 12400 E Marginal Way S, Tukwila
- 651 ▪ South Annex Base, 11911 E Marginal Way S, Tukwila (opening in 2028 on the former site of the
652 Training and Safety Center)
- 653 ▪ Training and Safety Center, 3401 S Norfolk Street, Seattle (leased facility)
- 654 ▪ South Facilities, 11911 E Marginal Way S, Tukwila
- 655 ▪ Component Supply Center, 12200 E Marginal Way S, Tukwila

656 ○ *South Park*

- 657 ▪ Access Base, 8100 8th Avenue S, Seattle

658 ○ *North Seattle and Shoreline*

- 659 ▪ North Base, 2160 N 163rd Street, Shoreline

³⁵ See additional Rideshare Online information at kingcounty.gov/depts/transportation/metro/travel-options/rideshare (accessed September 25, 2023).

660 ▪ North Facilities, 12525 Stone Avenue N, Seattle

661 • **Metro Fleet** - As of 2022, Metro’s fleet includes more than 1,400 fuel-efficient buses. The bus fleet
662 includes 40- and 60-foot hybrid diesel-electric buses, electric trolleys, and battery electric buses. Metro
663 also operates and maintains more than 100 Sound Transit buses. Metro’s fleet includes paratransit and
664 DART vehicles, Rideshare vans and electric Metropool vehicles, and passenger ferries. Metro also has a
665 fleet of approximately 670 non-revenue vehicles to support service and operations, which consists of
666 vehicles ranging from light-duty vehicles, such as sedans and vans, to medium- and heavy-duty vehicles
667 such as tow trucks and maintenance trucks.

668 • **Bus Stops and Shelters** - Metro’s transit system includes more than 7,000 bus stops. As of 2019, 62
669 percent of King County residents lived within one-half mile of frequent transit service, and 81 percent of
670 jobs within King County were within one-half mile of frequent service.

671 • **Park-and-Ride Facilities** - A park-and-ride facility is a lot or garage where people may park personal
672 vehicles and catch a bus, light rail, train, Vanpool, or carpool to reach their destination. Park-and-ride
673 lots are built, owned, leased, and maintained by several different agencies. A park-and-ride lot can also
674 serve as a park-and-pool lot, where individuals can rendezvous to form carpools and Vanpools.
675

676 There are 115 park-and-ride facilities in the King County Metro area, with a total of 26,065 vehicle spaces (as
677 of 2022). Metro, Sound Transit, and the Washington State Department of Transportation own permanent
678 park-and-ride lots within King County; Metro also leases spaces from a wide variety of agencies and
679 organizations. Although there have been significant changes in park-and-ride usage patterns since the
680 onset of the COVID-19 pandemic, Metro remains committed to implementing its permit parking fee
681 program; this program was developed in 2019 and targets Metro-owned lots at or above 90% capacity.
682 Regional park-and-ride utilization reports and park-and-ride locations, capacity, routes, and amenities can
683 be found online.³⁶

684 • **Electric Vehicle Charging Equipment** - Fourteen Metro routes use electric trolley buses. To support
685 the electric trolley bus network, Metro operates and maintains a network of overhead power
686 infrastructure and 35 electrical substations to power the system. In addition, Metro has been testing
687 battery-electric buses and developing the charging stations and power infrastructure necessary to
688 charge them, with the goal of achieving a zero-emission fleet by 2035.
689

690 Metro oversees a system of Level 2 light-duty vehicle chargers installed at multiple King County facilities.
691 These chargers are located at public-facing park-and-ride lots and transit facilities, as well as internally
692 focused county facilities. Metro recently upgraded a number of these chargers at park-and-ride lots and
693 other facilities to replace outdated equipment. Metro is currently focusing a major effort on installing
694 chargers at its bases and facilities to support the phased electrification of its non-revenue vehicle fleets.
695 Metro is also working to support its goal to electrify its bus fleet by 2035 by installing bus charging
696 equipment at its bases. Metro has developed the South Base Test Charging Facility with bus charging
697 equipment and will be installing bus charging equipment at Interim Base and South Annex Base as they are
698 constructed. Metro is also planning for the conversion of its existing bases to electric operations to support
699 a fully electric bus fleet.

700 • **Capital Program** - The King County Capital Improvement Program funds capital projects to help
701 maintain and improve transit assets and infrastructure. Metro has its own designated revenue sources
702 and service areas. Metro’s Public Transportation Fund Capital Program provides for ongoing
703 replacement of aging infrastructure and supports service delivery and expansion. The Capital
704 Improvement Program focuses on maintaining existing infrastructure and systems, partnering with other
705 regional transportation agencies, and providing the physical capacity needed to support projected
706 service. A key priority for Metro is supporting the transition to a zero-emissions fleet, with investments

³⁶ See additional regional park-and-ride information at psrc.org/park-and-ride-database (accessed September 25, 2023) and additional county park-and-ride information at kingcounty.gov/depts/transportation/metro/travel-options/parking (accessed September 25, 2023).

707 intended to support a fully zero-emission fleet by 2035. Additional information on the Capital
708 Improvement Program and the Transit Asset Management plan can be found online.³⁷

709
710 *Sound Transit*

711 Sound Transit is a regional transit authority that plans, builds, and operates express buses, light rail, and
712 commuter train services for the central Puget Sound Region so that people can get to where they're going,
713 safely and economically. Additional information on Sound Transit can be found online.³⁸

714
715 **ST Express Regional Bus Service**

716 ST Express regional bus service includes limited-stop bus routes, partnerships with the Washington State
717 Department of Transportation to develop HOV direct-access projects, and a variety of community
718 connection facilities including transit centers, access improvements, and park-and-ride lots. ST Express
719 buses travel between major cities in King, Snohomish, and Pierce counties. Information on routes, related
720 projects, and fares can be found online.³⁹

721
722 **Sounder Commuter Rail**

723 Sounder commuter rail uses diesel-powered locomotives and multilevel passenger coach trains that run on
724 BNSF Railway Company freight tracks. Sounder trains share the tracks with freight trains and Amtrak
725 passenger trains, using upgraded signals, switches, and street crossings. Trains travel between Lakewood
726 and Seattle and between Everett and Seattle. Information on routes, related projects, and fares can be
727 found online.⁴⁰

728
729 **Link Light Rail**

730 Link light rail is an electrically powered service that provides high-capacity transportation within the region's
731 highest employment and transit ridership areas. Link light rail travels from Seattle Northgate station to
732 SeaTac Angle Lake station. Information on routes, related projects, and fares can be found online.⁴¹

733
734 **System Integration**

735 The regional mass transit light rail system, operated by Sound Transit, extends from Angle Lake to
736 Northgate. Metro coordinates its services with regional system expansions to provide an integrated mobility
737 network. For example, in 2021, Sound Transit opened three new Link light rail stations in north Seattle to
738 extend the system from University of Washington station to Northgate Transit Center. Together with the
739 opening of the Link extension, Metro implemented the North Link Connections Mobility Project to better
740 serve the north Seattle, Shoreline, and North Shore communities.

741
742 Sound Transit is continuing to expand the system and open more stations in the mid-2020s and beyond.
743 Sound Transit 2 projects are currently scheduled to be completed by 2025. Sound Transit 3 projects will be
744 delivered between 2026 (bus rapid transit) and 2045. More information on Sound Transit plans for system
745 expansion and is available online.⁴²

746
747 Sound Transit services are integrated with local bus routes operated by King County Metro so that all
748 services support and complement each other. A 1998 Memorandum of Understanding between the two
749 agencies established the basic principles under which a coordinated system will be planned and operated.
750 Metro has adapted bus service to reflect the existing components of Link light rail and is planning for future
751 service restructures as additional segments of Link light rail are opened in the mid-2020s and beyond.

³⁷ See additional Capital Improvement Program information at kingcounty.gov/~media/council/documents/2022/A_Capital-Improvement-Program-11-4-2022 (accessed September 25, 2023) and additional Transit Asset Management Plan information at kingcounty.gov/metro/tam (accessed September 25, 2023).

³⁸ See additional Sound Transit information at soundtransit.org (accessed September 25, 2023).

³⁹ See additional Sound Transit Express services information at soundtransit.org/Rider-Guide/ST-Express-bus (accessed September 25, 2023).

⁴⁰ See additional Sound Transit commuter rail information at soundtransit.org/ride-with-us (accessed September 25, 2023).

⁴¹ See additional Sound Transit light rail information at soundtransit.org/Rider-Guide/Link-light-rail (accessed September 25, 2023).

⁴² See additional Sound Transit expansion plan information at soundtransit.org/system-expansion (accessed September 25, 2023) and Sound Transit Development Plan Annual Reports at soundtransit.org/About-Sound-Transit/News-and-events/Reports/Transit-Development-Plan (accessed September 25, 2023).

752 4. Active Transportation Facilities

753 *Bicycle Parking at Transit Facilities*

754 Bicycle parking and secure storage support ridership and overall mobility by increasing options for people
755 to connect to bus service or to meet a carpool or Vanpool. King County park-and-ride lots and transit
756 centers have bicycle racks and/or bicycle lockers for people who travel by personal bike to meet transit
757 service. Metro aims to reduce car travel to these locations by making it reliable to secure bicycles. As of July
758 2022, Metro provides secure bike parking at 29 locations, with a total of more than 250 spaces in a
759 combination of leased and BikeLink on-demand lockers. In addition, regional partner Sound Transit
760 provides more than 400 secure locker spaces at 20 locations within the King County portion of their service
761 area. Sound Transit also offers secure bike cages at seven locations in King County with a total of more than
762 270 spaces. Both Metro and Sound Transit plan expansion of secure bike parking and/or replacement of
763 older equipment in the next few years. Information on transit-related bicycle parking is available online.⁴³

764

765 *Regional Trails Network*

766 The Regional Trails network is used for recreational and transportation purposes. The network extends
767 broadly throughout the county, linking cities, other counties in the Central Puget Sound, and other regions
768 of the state. The network reaches more than 30 cities in King County, and is used extensively for active
769 transportation and recreation. King County government stewards approximately 175 miles of the 300-mile
770 network of multi-purpose paved and unpaved shared use paths. Several cities, the Port of Seattle, and the
771 State of Washington are responsible for the remaining portions. Information about the King County
772 Regional Trails System is available in the *King County Open Space Plan: Parks, Trails, and Natural Areas 2022*
773 *Update*.⁴⁴

774

775 *Roadside Active Transportation Facilities*

776 The Department of Local Services Road Services Division maintains active transportation facilities such as
777 bicycle lanes, sidewalks, and shoulders on unincorporated county roads. The division provides crosswalks,
778 signals, pavement markings, and signage to help facilitate safer active travel. The Transportation Needs
779 Report, an appendix to this *Comprehensive Plan*, includes known and forecasted active transportation
780 needs on unincorporated King County roads. The *2021 King County Road Services Division Americans with*
781 *Disabilities Act Transition Plan* inventoried unincorporated county road pedestrian facilities and guides
782 accessibility improvements to the existing network.⁴⁵

783 5. Rail and Freight

784 *Rail Facilities*

785 The rail network in the state has four distinct types of rail services: freight, long distance passenger, intercity
786 passenger, and commuter.

787

788 The Class I freight railroad system primarily serves the inland transportation component of the supply chain
789 for large volumes of import and export cargo moving through state ports including the Port of Seattle. Two
790 Class I freight railroads, the BNSF Railway and the Union Pacific Railroad, as well as 27 Class III (short-line)
791 freight railroads operate through communities in Washington. There are no Class II freight railroads in
792 Washington.

793

794 Amtrak provides long distance passenger rail service between Seattle and Chicago, Illinois (the Empire
795 Builder) and Seattle and Los Angeles, California (The Coast Starlight). Ridership for both services declined
796 from 2013-2019 but is expected to increase steadily through 2040.

797 Amtrak provides intercity passenger rail service, known as Amtrak Cascades, along the I-5 corridor between
798 Eugene, Oregon and Vancouver, British Columbia; the service is supported by Washington State

⁴³ See additional transit-related bicycle parking information at kingcounty.gov/en/dept/metro/rider-tools/bikes-and-transit/secure-bike-parking (accessed September 25, 2023).

⁴⁴ King County Open Space Plan: Parks, Trails, and Natural Areas 2022 Update, kingcounty.gov/~media/services/parks-recreation/parks/openspace/2022_KC_OpenSpacePlan_Update_Final (accessed September 25, 2023).

⁴⁵ 2021 King County Road Services Division Americans with Disabilities Act Transition Plan, kingcounty.gov/depts/local-services/roads/ada-plan (accessed September 25, 2023).

799 Department of Transportation funding. The Cascades High-Speed Rail Program provides four daily round
800 trips between Seattle and Portland, and one daily round trip between Seattle and Vancouver, B.C. There are
801 two Amtrak Stations in King County, located in the cities of Seattle and Tukwila. Ridership has been largely
802 level, with slight growth in 2018-2019. Ridership for intercity rail is expected to increase steadily, pending
803 Washington State Department of Transportation service investments. Information on passenger rail facilities,
804 projects, and data and the Washington State Department of Transportation 2019 Washington State Rail Plan
805 are available online.⁴⁶

806
807 Sound Transit's Sounder commuter rail uses diesel-powered locomotives and multi-level passenger coach
808 trains that run on BNSF Railway freight tracks. Sounder shares the tracks with freight trains and Amtrak
809 passenger trains, using upgraded signals, switches, and street crossings. Trains travel between Lakewood
810 and Seattle and between Everett and Seattle. Sounder ridership grew from about 2.1 million riders in 2010
811 to 4.6 million riders in 2019 and is expected to grow significantly by 2040. Information on Sounder routes,
812 related projects, and fares is available online.⁴⁷

813 *Other Freight Transport*

814 Freight transport is a major function of the regional transportation system. Regional planning for freight is
815 coordinated by the Puget Sound Regional Council and incorporated into the *2022-2050 Puget Sound*
816 *Regional Council Regional Transportation Plan*. The *Regional Transportation Plan* envisions an
817 interconnected network of highways and streets, railways, deep water ports and waterways, and airports. It
818 examines the current and future conditions and issues as the region looks to planning for a sustainable
819 transportation system out to 2050. Key elements of the regional freight system include roadway corridors
820 used for truck transport. The Washington State Department of Transportation maintains a statewide Freight
821 and Goods Transportation System which classifies the state's freight corridors by modes based on annual
822 freight tonnage. Regional centerline miles by Freight and Goods Transportation System classification are
823 included in the *Regional Transportation Plan*. Additional information on regional and state freight and
824 goods planning is available online.⁴⁸

826 V. Vehicle Travel Forecast Summary

827 The Washington State Growth Management Act requires the transportation element of
828 comprehensive plans to include a forecast of traffic for at least ten years based on the adopted land use
829 plan, and to provide information on the location, timing, and capacity needs of future growth (RCW
830 36.70A.70(6)(E)). It also requires an estimate of traffic impacts to state-owned transportation facilities
831 resulting from the land use assumptions. To meet these requirements,
832 the King County Department of Local Services, Road Services Division, adopted the Puget Sound Regional
833 Council's Regional Travel Demand Forecasting Model (Travel Model).

834
835 The Puget Sound Regional Council Travel Model forecasts future travel patterns and conditions within the
836 four counties of the Puget Sound region (King, Kitsap, Pierce, and Snohomish). The Travel Model produces
837 data that are used to analyze the likely impacts of forecast growth, travel, and infrastructure investments on
838 the region's transportation infrastructure and environment, and thus provides the foundation from which the
839 Puget Sound Regional Council develops many of its plans, most notably the *Regional Transportation Plan*.
840 The model incorporates projects identified in the Regional Transportation Plan in the unincorporated area
841 to be advanced by WSDOT, including planned projects to improve the interchange at I-90 and State Route
842 18 and to widen State Route 18 from Issaquah-Hobart Road SE to Deep Creek. It also incorporates projects
843 within incorporated areas that may indirectly affect travel in the unincorporated area, such as the City of

⁴⁶ See additional passenger rail information at wsdot.wa.gov/travel/passenger-rail (accessed September 25, 2023) and the state rail plan at wsdot.wa.gov/construction-planning/statewide-plans/freight-rail-plans/2019-washington-state-rail-plan (accessed September 25, 2023).

⁴⁷ See additional Sounder commuter rail information at soundtransit.org/get-to-know-us/documents-reports (accessed September 25, 2023) and at soundtransit.org/ride-with-us (accessed September 25, 2023).

⁴⁸ See additional regional freight information at psrc.org/planning-2050/regional-transportation-plan (accessed September 25, 2023) and state freight information at wsdot.wa.gov/construction-planning/statewide-plans/freight-plans (accessed September 25, 2023).

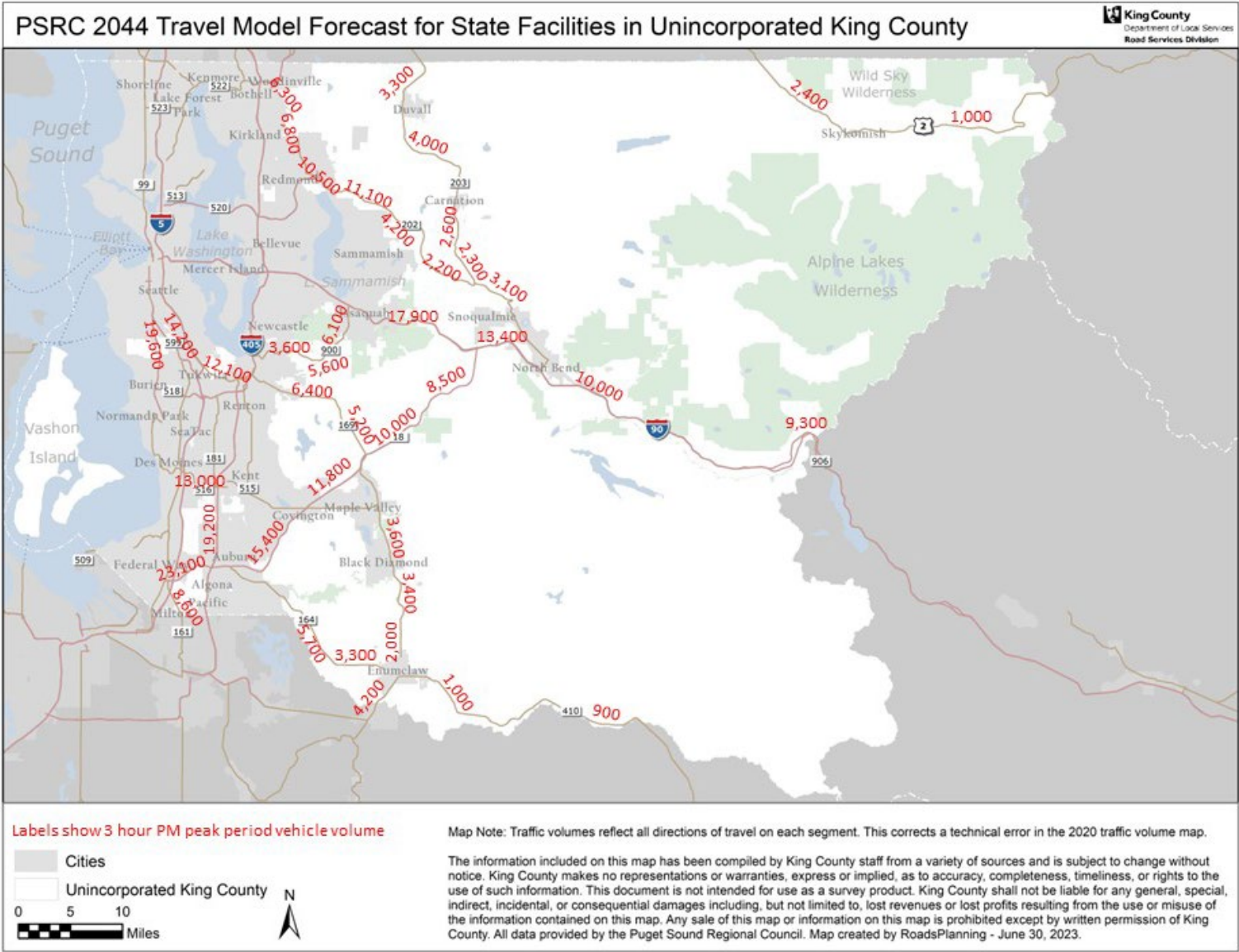
844 Auburn’s widening of Auburn Way S (SR-164) from Hemlock Street SE to the City Limits; the Cities of
845 Covington and Maple Valley’s widening of SR 516 from Jenkins Creek to 238th Avenue SE; the City of Kent’s
846 multimodal corridor improvements on S 272nd Street near I-5; the City of Maple Valley’s widening of State
847 Route 169 from SE 276th Street to South City Limits; the City of Redmond’s widening of Red-Wood Road
848 from 160th Avenue NE extension to NE 124th Street; the City of Renton’s widening of Oakesdale Avenue S;
849 the City of Sammamish’s widening of Sahalee Way NE from NE 12th Way to North City Limits; and WSDOT’s
850 widening of State Route 169 from State Route 516 to SE 231st Street. The Travel Model is used to support
851 the technical analysis of transportation projects and investments under consideration in the region. In
852 addition to transportation analysis, the travel model also supports growth management activities at the
853 agency.⁴⁹

854
855 The Road Services Division worked with Puget Sound Regional Council modeling staff to run a model
856 scenario with a forecast year of 2044. Raw model output was analyzed by King County planning staff. The
857 forecast three-hour p.m. peak period (afternoon rush hour) traffic volumes on state facilities were mapped to
858 review performance on state facilities, as shown in Figure 9, “Puget Sound Regional Council 2044 Travel
859 Model Forecast for State Facilities in Unincorporated King County.” Modeled traffic volumes and roadway
860 capacities on county roads were also reviewed for indications of potential future congestion. Road segments
861 where traffic volumes exceeded roadway capacities (ratios greater than one) were also mapped, as shown in
862 Figure 10, “Puget Sound Regional Council 2044 Travel Model Congestion Forecast for Unincorporated King
863 County.” Planning and engineering staff considered Travel Model analysis and other factors in the
864 development of projects for King County’s Transportation Needs Report.

865
866 Detailed information on the traffic forecasting model and assumptions used for the *Comprehensive Plan*,
867 including the Regional Transportation Plan’s Regional Capacity Project List, are available from the Puget
868 Sound Regional Council.

⁴⁹ See additional Puget Sound Regional Council Travel Model information at psrc.org/activity-based-travel-model-soundcast (accessed September 25, 2023).

869 **Figure 9: Puget Sound Regional Council 2044 Travel Model Forecast for State Facilities in Unincorporated King County**



871
 872

Figure 10: Puget Sound Regional Council 2044 Travel Model Congestion Forecast for Unincorporated King County



873