



DISTRICT
1

Rod Dembowski

DISTRICT
8

Teresa Mosqueda

DISTRICT
5

De'Sean Quinn

DISTRICT
7

Peter von Reichbauer

DISTRICT
2

Girmay Zahilay
Chair

DISTRICT
6

Claudia Balducci

DISTRICT
9

Reagan Dunn
Vice Chair

DISTRICT
3

Sarah Perry
Vice Chair

DISTRICT
4

Jorge L. Barón

As your Metropolitan King County Council, we oversee the second largest government and most populous county in Washington State. With over 2.4 million residents, King County is the 12th most populous county in the U.S. More people live in King County than in 15 states! At 2,130 square miles, the county covers more territory than the states of Rhode Island or Delaware.

Our dedicated employees provide quality regional services every day to county residents. We are also the local government for approximately 250,000 people who live in unincorporated urban and rural areas, and we provide services by contract to many of the county's 39 cities.

As the legislative branch of county government, the council sets policies, enacts laws, and adopts budgets that guide an array of services, including:

- The criminal legal system of prosecutors and public defenders, District and Superior Courts, juvenile detention, and adult jails
- The King County Sheriff's Office, which directly serves residents of unincorporated areas and contracts with many cities to provide police protection

- Public health and human services
- Metro Transit bus service, Water Taxi, King County International Airport (Boeing Field), and county roads
- Wastewater treatment and solid waste management
- Regional parks, open space, and trails
- Elections, records, and licensing

Each of the nine members of the King County Council represents a geographical district averaging about 264,200 residents. Councilmembers are elected on a non-partisan basis and serve four-year terms.

The council has several standing committees that oversee specific functions of county government and a Committee of the Whole that includes all councilmembers. They also work closely with elected officials from local jurisdictions on three regional committees that address common interests in matters of policy, transit, and water quality.

The council's review of ordinances, motions, and budgets help ensure that county government operates in an efficient, transparent, and cost-effective manner, with equal access for all county residents.

Council Chair's message and overview of the county budget



Girmay Zahilay, Chair

AS CHAIR OF THE KING COUNTY COUNCIL, it is an honor to lead the legislative branch and serve our community. This is a pivotal time for King County, and I'm committed to advancing policies that help our residents, businesses, and the environment thrive.

We face significant challenges, including a \$150 million budget shortfall, worsening housing and behavioral health crises, and the need to improve public services and public safety. My focus will be on efficient governance, collaborating across jurisdictions to tackle these issues and ensure we deliver effective solutions for the people of King County.

I look forward to working with my colleagues and the community to tackle these challenges and build a brighter future for all who call King County home. Together, we can make our region stronger, safer, and more prosperous for everyone.

Understanding the county budget

King County's operating budget is composed of two types of funds: dedicated funds and the General Fund.

Dedicated funds

Dedicated funds are the largest portion, accounting for 86% of the total operating budget. By law, these funds are restricted to specific purposes, such as transit, sewage treatment, and voter-approved programs like regional Emergency Medical Services.

The General Fund

The discretionary portion of the county's operating budget is the General Fund, which amounts to 14% of the total operating budget. These funds pay for critical day-to-day services not supported by other revenues. Almost three quarters of the General Fund (71%) pays for criminal justice and public safety, as mandated by the state. The remainder must fund other services, such as elections and human services (see pie chart).

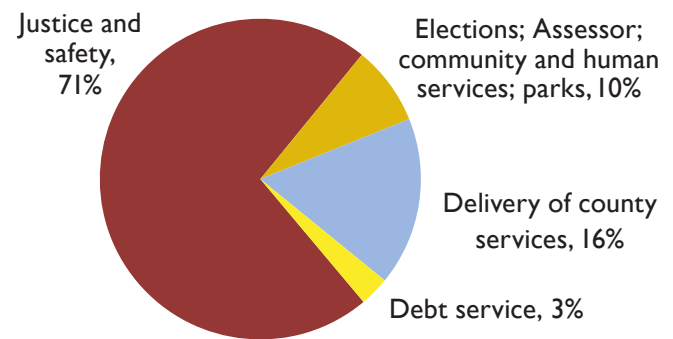
The General Fund is supported mostly by property tax, sales tax, and charges for services. By law, King County collects property taxes on behalf of all taxing districts in the county. However, the county receives only 20 cents of every property tax dollar, with the rest going to other agencies (see bar graph). Similarly, the county receives about two cents of the sales tax of just over 10 cents per dollar collected in most of the county.

The funding gap

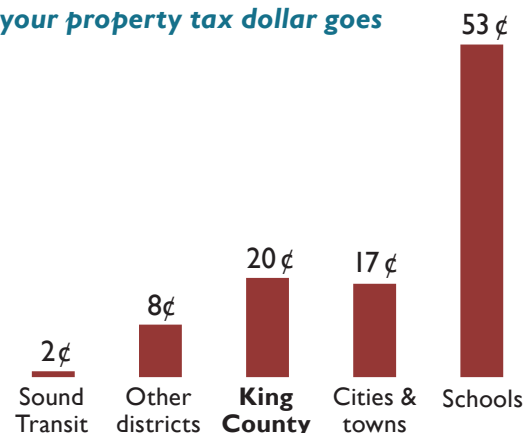
Since Washington State enacted the 1% cap on property tax increases, counties across our state have faced a gap between revenue and the cost of providing services. In the past, this structural gap has resulted

in the General Fund being cut by several hundred million dollars, with consequent reduction in services to county residents. The current funding gap has been exacerbated by historic inflation and other factors. A \$150 million deficit is forecast for the General Fund in the 2026-2027 biennial budget. The Council will review and adopt a balanced county budget, as required by law, in the fall of 2025.

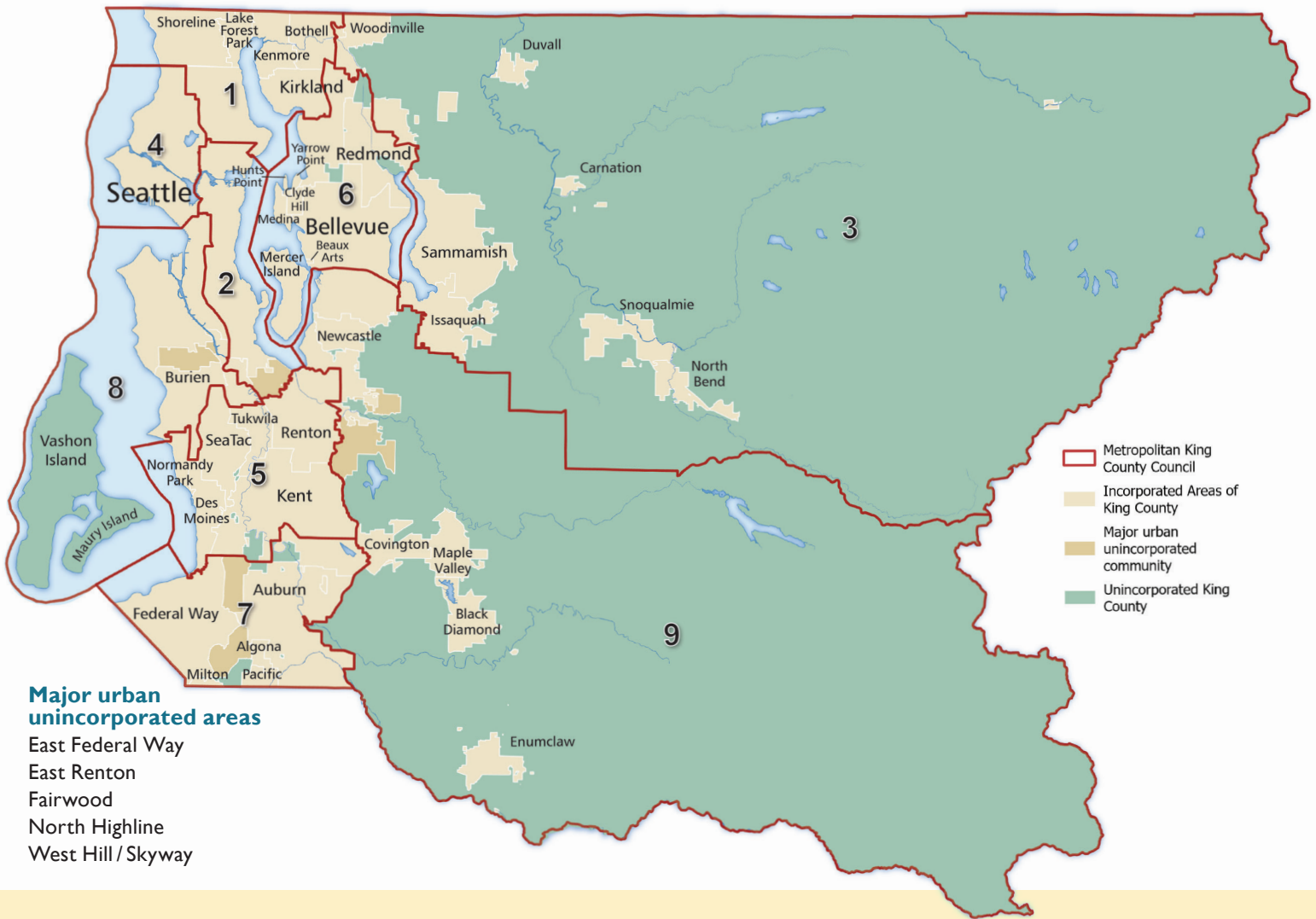
General Fund expenditures



Where your property tax dollar goes



Council districts map and contact information



Major urban unincorporated areas

East Federal Way
 East Renton
 Fairwood
 North Highline
 West Hill / Skyway

Contact information

Watch meetings

View council and committee meetings live on King County TV:

- Comcast Channel 22
- Comcast Channel 322 (HD)
- Astound Channel 22
- Astound Channel 711 (HD)
- kingcounty.gov/KCTV

Agendas, minutes, and videos of past meetings are available on the council's website.

Clerk of the Council

clerk.council@kingcounty.gov
 (206) 477-1020

Mailing address

Metropolitan King County Council
 King County Courthouse
 516 Third Avenue, 12th Floor
 Seattle, WA 98104-3272

Online

- 📧 kingcounty.gov/council
- 📘 facebook.com/kingcountycouncil
- 📍 x.com/kccouncil
- 📷 instagram.com/kccouncil

Telephone

- ☎ (206) 477-1000
- Toll-free: (800) 325-6165
- TTY/TDD: Relay 711

| Dist. | Councilmember | Phone | Email |
|-------|----------------------|----------|--|
| 1 | Rod Dembowski | 477-1001 | rod.dembowski@kingcounty.gov |
| 2 | Girmay Zahilay | 477-1002 | girmay.zahilay@kingcounty.gov |
| 3 | Sarah Perry | 477-1003 | sarah.perry@kingcountwwnty.gov |
| 4 | Jorge L. Barón | 477-1004 | jorge.baron@kingcounty.gov |
| 5 | De'Sean Quinn | 477-1005 | desean.quinn@kingcounty.gov |
| 6 | Claudia Balducci | 477-1006 | claudia.balducci@kingcounty.gov |
| 7 | Peter von Reichbauer | 477-1007 | pete.vonreichbauer@kingcounty.gov |
| 8 | Teresa Mosqueda | 477-1008 | teresa.mosqueda@kingcounty.gov |
| 9 | Reagan Dunn | 477-1009 | reagan.dunn@kingcounty.gov |

Which council district do I live in? Enter your address at bit.ly/find-district

Council and regional committees and meetings

The King County Council reviews proposed legislation through standing committees that oversee specific government functions. Councilmembers also work closely with elected officials from local jurisdictions on three regional committees that address common interests in policy, transit, and water quality. They also serve as the Board of Supervisors for the King County Flood Control District, a special-purpose government. Additionally, individual councilmembers serve on a variety of external committees, boards, and commissions, such as the Board of Health and the Sound Transit Board.

For more information on the committees, including descriptions, alternate members, and meeting agendas, please visit bit.ly/kcc-committees.

King County Council

Meets first to fourth Tuesday at 1:30 pm

Chair: Girmay Zahilay

Vice Chair: Reagan Dunn, Sarah Perry

Members: All councilmembers

Committee of the Whole

Legislation and policy of interest to the full Council

Meets fourth Tuesday at 9:30 am

Chair: Claudia Balducci

Vice Chair: Teresa Mosqueda

Members: All councilmembers

Budget and Fiscal Management

Policy direction for the King County budget

Meets second and fourth Wednesday at 9:30 am

Chair: Rod Dembowski

Vice Chair: Jorge L. Barón

Members: Claudia Balducci, Teresa Mosqueda, Sarah Perry, De'Sean Quinn, Girmay Zahilay

Government Accountability and Oversight

Oversight of county government for efficiency, accountability, and transparency

Meets second Tuesday at 9:30 am

Chair: Peter von Reichbauer

Vice Chair: Reagan Dunn

Members: Teresa Mosqueda, Sarah Perry

Health, Housing, and Human Services

Policy relating to health, housing, and human services

Meets first Tuesday at 9:30 am

Chair: Teresa Mosqueda

Vice Chair: Reagan Dunn

Members: Jorge L. Barón, De'Sean Quinn

Law and Justice

Policy relating to law, safety, and criminal justice

Meets first Wednesday at 9:30 am

Chair: Jorge L. Barón

Vice Chair: Claudia Balducci,

Members: Rod Dembowski, Teresa Mosqueda

Local Services and Land Use

Policy issues such as water supply, unincorporated and rural areas, and emergency management

Meets third Wednesday at 9:30 am

Chair: Sarah Perry

Vice Chair: De'Sean Quinn

Members: Reagan Dunn, Teresa Mosqueda

Transportation, Economy, and Environment

Oversight of public transit, passenger ferries, environment, water quality, and economic policy

Meets third Tuesday at 9:30 am

Chair: De'Sean Quinn

Vice Chair: Rod Dembowski

Members: Claudia Balducci, Sarah Perry, Peter von Reichbauer

Regional Policy

Countywide policies and plans on issues such as human services, criminal justice, and solid waste management

Meets second Wednesday at 3:00 pm

Chair: Peter von Reichbauer

Vice Chair: Auburn Mayor Nancy Backus

Members: Rod Dembowski, Girmay Zahilay, three **Sound Cities Association** members, and two **City of Seattle** members

Regional Transit

Countywide policies and plans pertaining to King County Metro Transit services

Meets third Wednesday at 3:00 pm

Chair: Jorge L. Barón

Vice Chair: Bellevue City Councilmember Janice Zahn

Members: De'Sean Quinn, seven **Sound Cities**

Association members, and two **City of Seattle** members

Regional Water Quality

Countywide policies and plans for wastewater treatment and sewer services, capital facilities plans, rate policies, and facilities siting

Meets first Wednesday at 3:00 pm

Chair: Claudia Balducci

Vice Chair: Shoreline Deputy Mayor Laura Mork

Members: Reagan Dunn, three **Sound Cities**

Association members, two **Sewer District** members, and two **City of Seattle** members