



STANDING: Teresa Mosqueda, District 8, Claudia Balducci, District 6, Rod Dembowski, District 1, Rhonda Lewis, District 2, Peter von Reichbauer, District 7, Steffanie Fain, District 5.

SEATED: Vice Chair Jorge L. Barón, District 4, Council Chair, Sarah Perry, District 3, Vice Chair Reagan Dunn, District 9.

**As your Metropolitan King County Council, we oversee the second largest government and most populous county in Washington State. With over 2.4 million residents, King County is the 12<sup>th</sup> most populous county in the U.S. More people live in King County than in 15 states! At 2,130 square miles, the county covers more territory than the states of Rhode Island or Delaware.**

Our dedicated employees provide quality regional services every day to county residents. We are also the local government for approximately 250,000 people who live in unincorporated urban and rural areas, and we provide services by contract to many of the county's 39 cities.

As the legislative branch of county government, the Council sets policies, enacts laws, and adopts budgets that guide an array of services, including:

- The criminal legal system of prosecutors and public defenders, District and Superior Courts, juvenile detention, and adult jails
- The King County Sheriff's Office, which directly serves residents of unincorporated areas and contracts with many cities to provide police protection

- Public health and human services
- Metro Transit bus service, Water Taxi, King County International Airport (Boeing Field), and county roads
- Wastewater treatment and solid waste management
- Regional parks, open space, and trails
- Elections, records, and licensing

Each of the nine members of the King County Council represents a geographical district averaging about 268,000 residents. Councilmembers are elected on a nonpartisan basis and serve four-year terms.

The Council has several standing committees that oversee specific functions of county government and a Committee of the Whole that includes all councilmembers. They also work closely with elected officials from local jurisdictions on three regional committees that address common interests in matters of policy, transit, and water quality.

The Council's review of ordinances, motions, and budgets help ensure that county government operates in an efficient, transparent, and cost-effective manner, with equal access for all county residents.

# Council Chair's message and overview of the county budget



Sarah Perry, Chair

## IT IS AN HONOR TO LEAD THE KING COUNTY

legislative branch in serving you and every resident of King County as Chair of the Council this year. This is a pivotal time in the history of our county and our country, and I'm committed to advancing policies that address the needs of all of our residents and businesses.

We began this year in the aftermath of an historic flooding

event that has both challenged our communities and demonstrated our strength and resilience. It is this tenacity and coordination that we must bring as we tackle the pressing issues impacting our county from degrading road infrastructure to a worsening housing and behavioral health crisis.

I will pursue effective and responsible policies and services that stabilize our communities, making King County a government that you can rely on, and champion collaboration across jurisdictions and organizations in our region to stand for the health and safety of each and every one of our community members.

I look forward to working with you and my colleagues to tackle the challenges we face and make King County a place where all can thrive.

## Understanding the county budget

King County's operating budget is composed of two types of funds: dedicated funds and the General Fund.

### Dedicated funds

Dedicated funds are the largest portion, accounting for 86% of the total operating budget. By law, these funds are restricted to specific purposes, such as transit, sewage treatment, and voter-approved programs like regional Emergency Medical Services.

### The General Fund

The discretionary portion of the county's operating budget is the General Fund, which amounts to 14% of the total operating budget. These funds pay for critical day-to-day services not supported by other revenues. Almost three quarters of the General Fund (73%) pays for criminal justice and public safety, as mandated by the state. The remainder must fund other services, such as elections and human services (see pie chart).

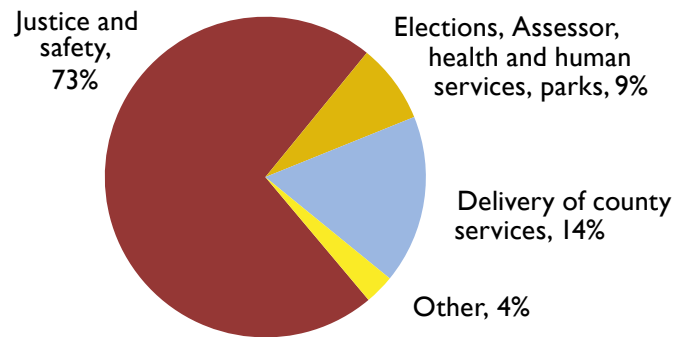
The General Fund is supported mostly by property tax, sales tax, and charges for services. By law, King County collects property taxes on behalf of all taxing districts in the county. However, the county receives only 20 cents of every property tax dollar, with the rest going to other agencies (see bar graph). Similarly, the county receives about two cents of the sales tax of just over 10 cents per dollar collected in most of the county.

### The funding gap

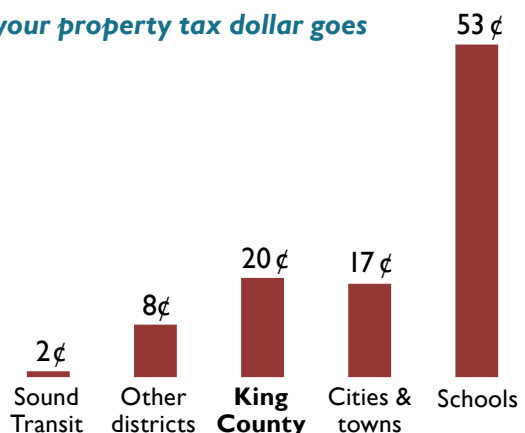
Since Washington State enacted the 1% cap on property tax increases, counties across our state have faced a gap between revenue and the cost of providing services. In the past, this structural gap has resulted in

the General Fund being cut by several hundred million dollars, with consequent reductions in services to county residents. However, in 2025, the Washington State Legislature provided a new General Fund revenue source for cities and counties that enabled King County to avoid \$150 million in budget reductions in the 2026-2027 biennial budget.

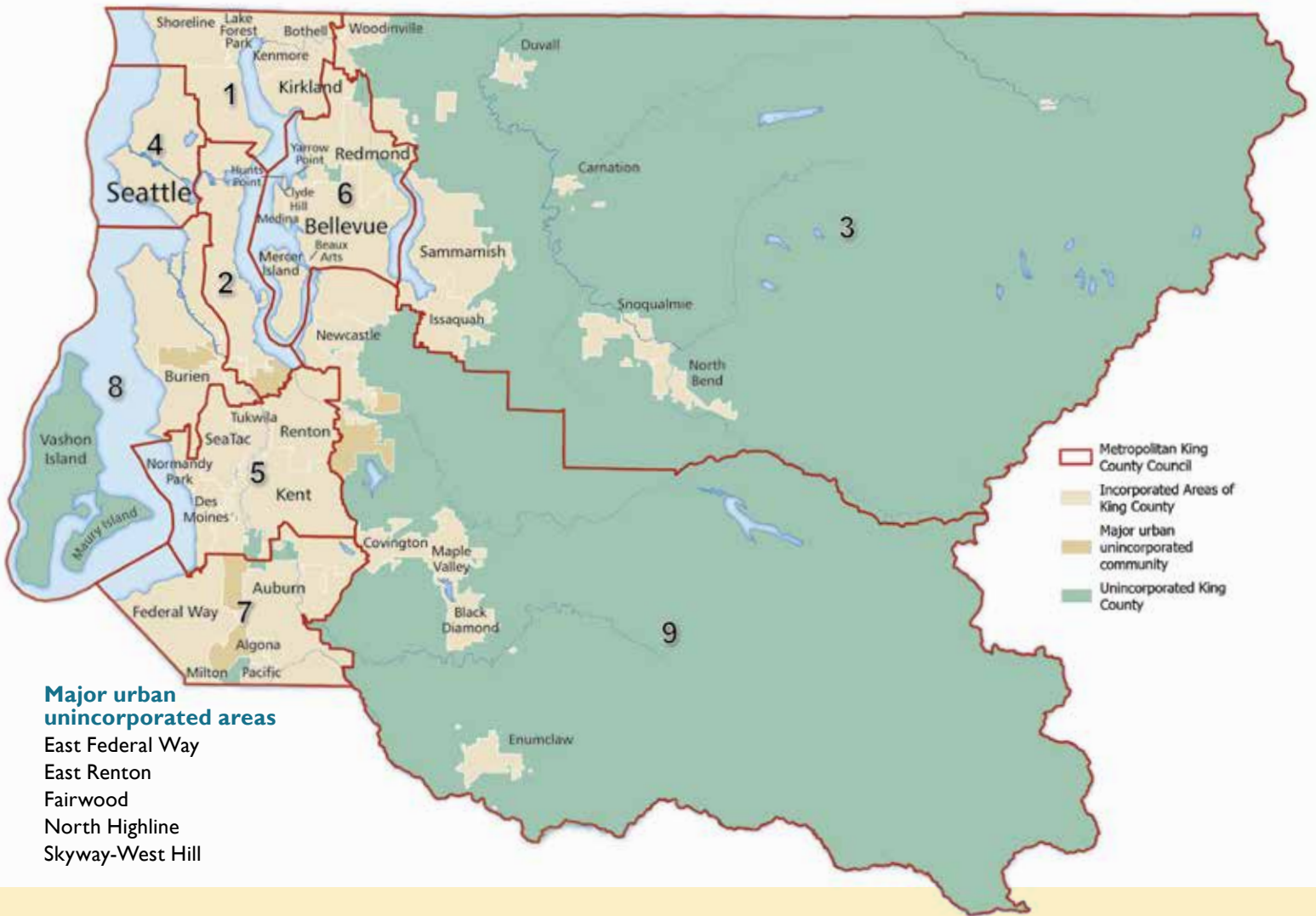
### General Fund expenditures



### Where your property tax dollar goes



# Council districts map and contact information



## Major urban unincorporated areas

East Federal Way  
 East Renton  
 Fairwood  
 North Highline  
 Skyway-West Hill

## Contact information

### Watch meetings

View Council and committee meetings live on King County TV:

- Comcast Channel 22
- Comcast Channel 322 (HD)
- Astound Channel 22
- Astound Channel 711 (HD)
- [kingcounty.gov/KCTV](http://kingcounty.gov/KCTV)

Agendas, minutes, and videos of past meetings are available on the Council's website.

### Clerk of the Council

[clerk.council@kingcounty.gov](mailto:clerk.council@kingcounty.gov)  
 (206) 477-1020

### Mailing address

Metropolitan King County Council  
 King County Courthouse  
 516 Third Avenue, 12th Floor  
 Seattle, WA 98104-3272

### Online

- 📧 [kingcounty.gov/council](http://kingcounty.gov/council)
- 📘 [facebook.com/kingcountycouncil](https://facebook.com/kingcountycouncil)
- 📺 [x.com/kccouncil](https://x.com/kccouncil)
- 📷 [instagram.com/kccouncil](https://instagram.com/kccouncil)

### Telephone

- ☎️ (206) 477-1000
- Toll-free: (800) 325-6165
- TTY/TDD: Relay 711

Dist.	Councilmember	Phone	Email
1	Rod Dembowski	(206) 477-1001	<a href="mailto:rod.dembowski@kingcounty.gov">rod.dembowski@kingcounty.gov</a>
2	Rhonda Lewis	(206) 477-1002	<a href="mailto:rhonda.lewis@kingcounty.gov">rhonda.lewis@kingcounty.gov</a>
3	Sarah Perry	(206) 477-1003	<a href="mailto:sarah.perry@kingcounty.gov">sarah.perry@kingcounty.gov</a>
4	Jorge L. Barón	(206) 477-1004	<a href="mailto:jorge.baron@kingcounty.gov">jorge.baron@kingcounty.gov</a>
5	Steffanie Fain	(206) 477-1005	<a href="mailto:steffanie.fain@kingcounty.gov">steffanie.fain@kingcounty.gov</a>
6	Claudia Balducci	(206) 477-1006	<a href="mailto:claudia.balducci@kingcounty.gov">claudia.balducci@kingcounty.gov</a>
7	Peter von Reichbauer	(206) 477-1007	<a href="mailto:pete.vonreichbauer@kingcounty.gov">pete.vonreichbauer@kingcounty.gov</a>
8	Teresa Mosqueda	(206) 477-1008	<a href="mailto:teresa.mosqueda@kingcounty.gov">teresa.mosqueda@kingcounty.gov</a>
9	Reagan Dunn	(206) 477-1009	<a href="mailto:reagan.dunn@kingcounty.gov">reagan.dunn@kingcounty.gov</a>

Which Council district do I live in? Enter your address at [bit.ly/find-district](https://bit.ly/find-district)

# Council and regional committees and meetings

The King County Council reviews proposed legislation through standing committees that oversee specific government functions. Councilmembers also work closely with elected officials from local jurisdictions on three regional committees that address common interests in policy, transit, and water quality. They also serve as the Board of Supervisors for the King County Flood Control District, a special-purpose government. Additionally, individual councilmembers serve on a variety of external committees, boards, and commissions, such as the Board of Health and the Sound Transit Board.

For more information on the committees, including descriptions, alternate members, and meeting agendas, please visit [bit.ly/kcc-committees](https://bit.ly/kcc-committees).

---

## King County Council

*Meets the first through fourth Tuesdays at 1:30 p.m.*

**Chair:** Sarah Perry

**Vice Chair:** Reagan Dunn, Jorge L. Barón

**Members:** All councilmembers

---

## Committee of the Whole

Legislation and policy of interest to the full Council

*Meets fourth Tuesday at 9:30 a.m.*

**Chair:** Jorge L. Barón

**Vice Chair:** Claudia Balducci

**Members:** All councilmembers

---

## Budget and Fiscal Management

Policy direction for the King County budget

*Meets second and fourth Wednesday at 9:30 a.m.*

**Chair:** Rod Dembowski

**Vice Chair:** Jorge L. Barón

**Members:** Steffanie Fain, Rhonda Lewis, Teresa Mosqueda, Sarah Perry

---

## Government Accountability and Oversight

Oversight of county government for efficiency, accountability, and transparency

*Meets second Tuesday at 9:30 a.m.*

**Chair:** Peter von Reichbauer

**Vice Chair:** Steffanie Fain

**Members:** Claudia Balducci, Reagan Dunn

---

## Health, Housing, and Human Services

Policy relating to health, housing, and human services

*Meets first Tuesday at 9:30 a.m.*

**Chair:** Teresa Mosqueda

**Vice Chair:** Rhonda Lewis

**Members:** Jorge L. Barón, Steffanie Fain

---

## Law and Justice

Policy relating to law, safety, and criminal justice

*Meets first Wednesday at 9:30 a.m.*

**Chair:** Rhonda Lewis

**Vice Chair:** Rod Dembowski

**Members:** Claudia Balducci, Jorge L. Barón, Teresa Mosqueda

---

## Local Services and Land Use

Policy issues such as water supply, unincorporated and rural areas, and emergency management

*Meets third Wednesday at 9:30 a.m.*

**Chair:** Reagan Dunn

**Vice Chair:** Rhonda Lewis

**Members:** Teresa Mosqueda, Sarah Perry

---

## Transportation, Economy, and Environment

Oversight of public transit, passenger ferries, environment, water quality, and economic policy

*Meets third Tuesday at 9:30 a.m.*

**Chair:** Steffanie Fain

**Vice Chair:** Peter von Reichbauer

**Members:** Claudia Balducci, Reagan Dunn

---

## Regional Policy

Countywide policies and plans on issues such as human services, criminal justice, and solid waste management

*Meets second Wednesday at 3 p.m.*

**Chair:** Peter von Reichbauer

**Vice Chair:** Auburn Mayor Nancy Backus

**Members:** Jorge L. Barón, Sarah Perry, three **Sound Cities Association** members, and two **City of Seattle** members

---

## Regional Transit

Countywide policies and plans pertaining to King County Metro Transit services

*Meets third Wednesday at 3 p.m.*

**Chair:** Steffanie Fain

**Vice Chair:** Renton Council President Ryan McIrvin

**Members:** Sarah Perry, Peter von Reichbauer, eight **Sound Cities Association** members, and two **City of Seattle** members

---

## Regional Water Quality

Countywide policies and plans for wastewater treatment and sewer services, capital facilities plans, rate policies, and facilities siting

*Meets first Wednesday at 3 p.m.*

**Chair:** Claudia Balducci

**Vice Chair:** Shoreline Councilmember Laura Mork

**Members:** Reagan Dunn, Rhonda Lewis, four **Sound Cities Association** members, two **Sewer District** members, two **City of Seattle** members, and one MWPAAC member.