



**Eastrail Regional Advisory Council
Friday July 25, 2025 10:00AM – 12:00PM**

Location

**Woodinville City Council Chambers
17301 133rd Avenue NE, Woodinville, WA 98072**

Agenda

10:00 AM – 10:05 AM Introductions and Agenda Review

- RAC Co-Chair/King County Councilmember Claudia Balducci

10:05 AM – 10:10 AM Approval of April 24, 2025 RAC Meeting Summary

- RAC Co-Chair/King County Councilmember Claudia Balducci

10:10 AM – 10:15 AM Good of the Order Updates (Information Item)

- RAC Co-Chair/King County Councilmember Claudia Balducci

10:15 AM – 10:50 AM Eastrail Northern Connections – Woodinville and Snohomish County (Information Item)

- Jared Hill, City of Woodinville
- Emily Griffith, Snohomish County
- Curt Warber, King County Parks and Recreation Division

10:50 AM – 12:00 PM (or later at RAC member discretion) Site Walk of Woodinville Eastrail Corridor Area (Information Item)

- Councilmember Michelle Evans
- Woodinville Mayor Mike Millman
- Brandon Buchanan, Woodinville City Manager

12:00 PM Adjourn



EASTRAIL REGIONAL ADVISORY COUNCIL

DRAFT MEETING SUMMARY
April 24, 2025 | 10 AM – 12 PM
Zoom Meeting

Regional Advisory Council (RAC) Members Present: Jessica Forsythe, Redmond Council Vice President (Co-Chair); John Stokes, Bellevue Councilmember; John Taylor, King County Dept. of Natural Resources and Parks Director; Jay Arnold, Kirkland Deputy Mayor; Ryan McIrvine, Renton Councilmember; Tom Teigen, Snohomish County Parks and Recreation Director; Michelle Evans, Woodinville Councilmember; Matt Larsen, Puget Sound Energy; Ariel Taylor, Sound Transit; Vicky Clarke, Eastside Greenway Alliance

Welcome and Introductions

RAC Co-Chair/Council Vice President Jessica Forsythe called the meeting to order at 10:03 am, welcomed all in attendance to the second RAC meeting of 2025, and reviewed the agenda.

Public Comment

Peter recommended moving the public comment agenda item to the end of the RAC meeting after presentations.

Appreciation for Service

RAC Co-Chair/Council Vice President Forsythe and RAC members recognized and thanked Councilmember John Stokes for his service to Bellevue, the RAC, and the region, and congratulated him on his retirement.

Approval of January 24, 2025 RAC meeting summary

Councilmember Evans moved to approve the January 24 meeting summary and Matt Larsen seconded.

Members unanimously voted to approve the January 24 meeting summary.

RAC Membership Revision – Eastside Greenway Alliance (Discussion and/or Consensus Item)

David St. John of King County DNRP provided an update on Eastside Greenway Alliance's (EGA) departure from the RAC and next steps. Slides were included in the meeting packet.

- Members of EGA include Cascade Bicycle Club, Transportation Choices Coalition, Futurewise, Forterra NW, Mountains to Sound Greenway Trust, Move Redmond, Trust for Public Land, and Washington Trails Association. The organization is disbanding and will relinquish their seat.
- Addressing this matter will likely entail letter communication among RAC members documenting consensus on any RAC membership changes and revising the 2017 RAC MOU as it identifies the current RAC membership
- Options to address EGA's departure include:
 - a. Maintain a seat for the role EGA was performing and identify a new entity for it.
 - b. Maintain the seat but work through a process to consider the purpose of the seat and identify an entity for it.
 - c. Eliminate the seat and reduce the number of RAC entities.

Discussion & Next Steps

- Members proposed Eastrail Partners (EP) as a potential successor. Katherine Hollis of EP noted that they had considered this proposition and preferred to maintain independence and a

delineation between government entities and non-profit partners (especially as service providers) and were not interested in filling the seat.

- Members wanted to bring the discussion back to their jurisdictions and to the Future of Eastrail workshop to see if there were ideas for other organizations that would be interested in filling the seat, potentially one focused on community outreach and engagement.
- Staff will do more research about the seat purpose and potential organizations and bring back to an upcoming RAC meeting for members to vote.

“Future of Eastrail” Workshop Planning (Information Item)

Curt Warber of King County Parks shared updates on the Future of Eastrail workshop. Slides were included in the meeting packet.

- Workshop will be June 13th at GIX in the Spring District. They currently have 35 RSVPs with capacity for ~125 and more for the social event following. Linda Hwang from Trust for Public Land will be the keynote speaker.
- Staff will bring ideas and input from the workshop to upcoming RAC meetings to inform future RAC considerations about corridor development.
- RAC members should RSVP if they haven’t already and share ideas for potential invitees.

Development and Implementation of “Welcome to Eastrail” Community Guidelines (Information Item)

Joe Inslee of King County Parks and Katherine Hollis of Eastrail Partners provided an update on the “Welcome to Eastrail” Community Guidelines and Eastrail Ambassador program. Slides were included in the meeting packet.

- Signage and social media posts will be deployed across King County, Kirkland, and Redmond.
- Eastrail Ambassadors program goals include bringing awareness of Eastrail use and etiquette, engaging trail volunteers, and amplifying messages on signage. They will be focused on information and welcoming, not on enforcement or addressing behavior, and they will also be tracking questions and comments received from trail users. Ambassadors will be present for two days each in an open area of three owners’ trail segments: early summer in Bellevue and Renton, mid-summer in Kirkland, and late summer/early fall on newly opened RCCIII and near Downtown Redmond light rail station.

Discussion & Next Steps

- Members noted the need for signage accessibility in terms of color and text visibility.
- Members were interested in a summary of what Ambassadors hear from members of the public.

Sound Transit 2 Line Opening Events (Information Item)

Ariel Taylor and Savanna Steele of Sound Transit shared updates on two new light rail station openings and celebration events in Redmond on May 10 for the Marymoor Village and Downtown Redmond Stations. The Downtown Redmond station will connect to the Eastrail/Redmond Central Connector. Members expressed excitement and appreciation for Sound Transit’s work and noted that these new high-capacity transit facilities will also greatly increase connectivity to Marymoor Park and the East Lake Sammamish Trail.

Eastrail in the Proposed King County Parks Levy (Information Item)

Warren Jimenez of King County Park shared updates on the six-year \$1.45 billion King County Parks replacement levy which will be on the August 5th ballot. If passed, it will provide funding for operations and maintenance, grant programs, support for local jurisdictions, parks districts, and partners, and

includes \$65 million for Eastrail projects to complete various segments, including serving as a match for the RAISE grant for the I-90 bridge segment.

Discussion & Next Steps

- Members noted that the more funding guaranteed through the Levy for trails projects in King County, the more support and focused attention can be dedicated to other Eastrail priorities in Woodinville, Renton, etc.
- Members were interested in whether the RAC could officially endorse the levy, however due to public hearing and other requirements, the RAC likely cannot and members should work within their individual jurisdictions to endorse.
- Staff will share a factsheet and website link with more levy information.

Progress and Success Updates (Information Item)

Woodinville – going out to bid for trestle replacement which is a key part of their Eastrail segment, and also moving forward on a tunnel and roundabout project which will be their first official part of Eastrail.

Kirkland – installing camera counters in several locations including Feriton Spur Park, intersection at 85th where the Cross-Kirkland Corridor meets the BRT station, and the Totem Lake Connector Bridge. Deputy Mayor Arnold also shared observations and photos from recent trip to the Atlanta Beltline.

Redmond – RCCIII will open in July, date to be announced.

King County – Wilburton Trestle construction is underway and will continue into next year, and the wastewater project on I-90 steel bridge will begin soon. In Renton, they are actively re-engaging with BNSF on potential acquisition of corridor area there.

Eastrail Partners – have several upcoming community events, will send out in meeting materials.

The meeting recording is available here: [2025 Meetings - King County](#). Interested parties should send comments to eastrail@kingcounty.gov. Joe Inslee will compile any additional comments received.

Next Steps and Adjournment

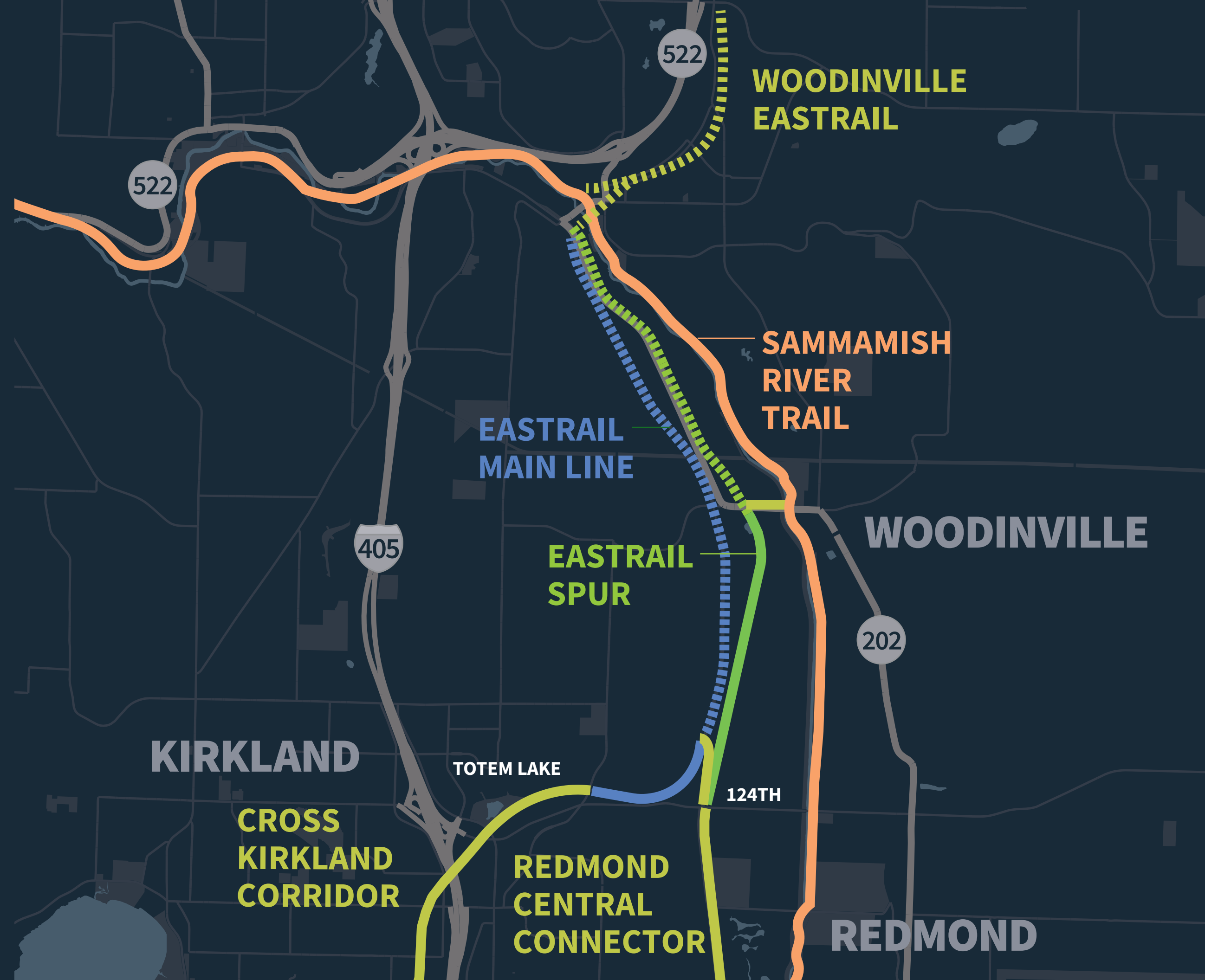
The next RAC meeting is July 25. The meeting adjourned at 12:04 pm.

EASTRAIL

**KING COUNTY PARKS
NORTHERN TRAILS**

CONNECTING WOODINVILLE, KIRKLAND, AND REDMOND

WOODINVILLE REGIONAL TRAILS

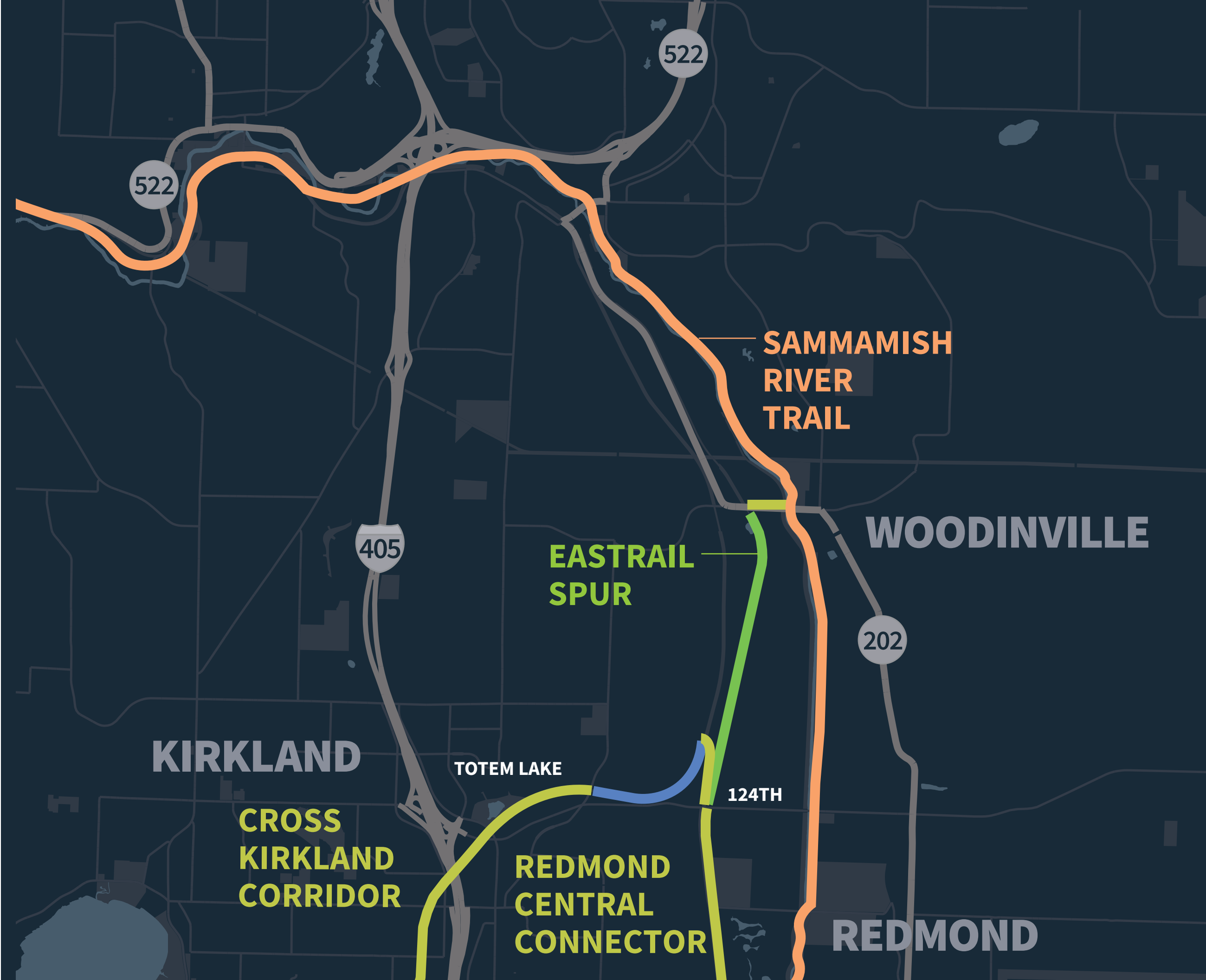


WOODINVILLE REGIONAL TRAILS



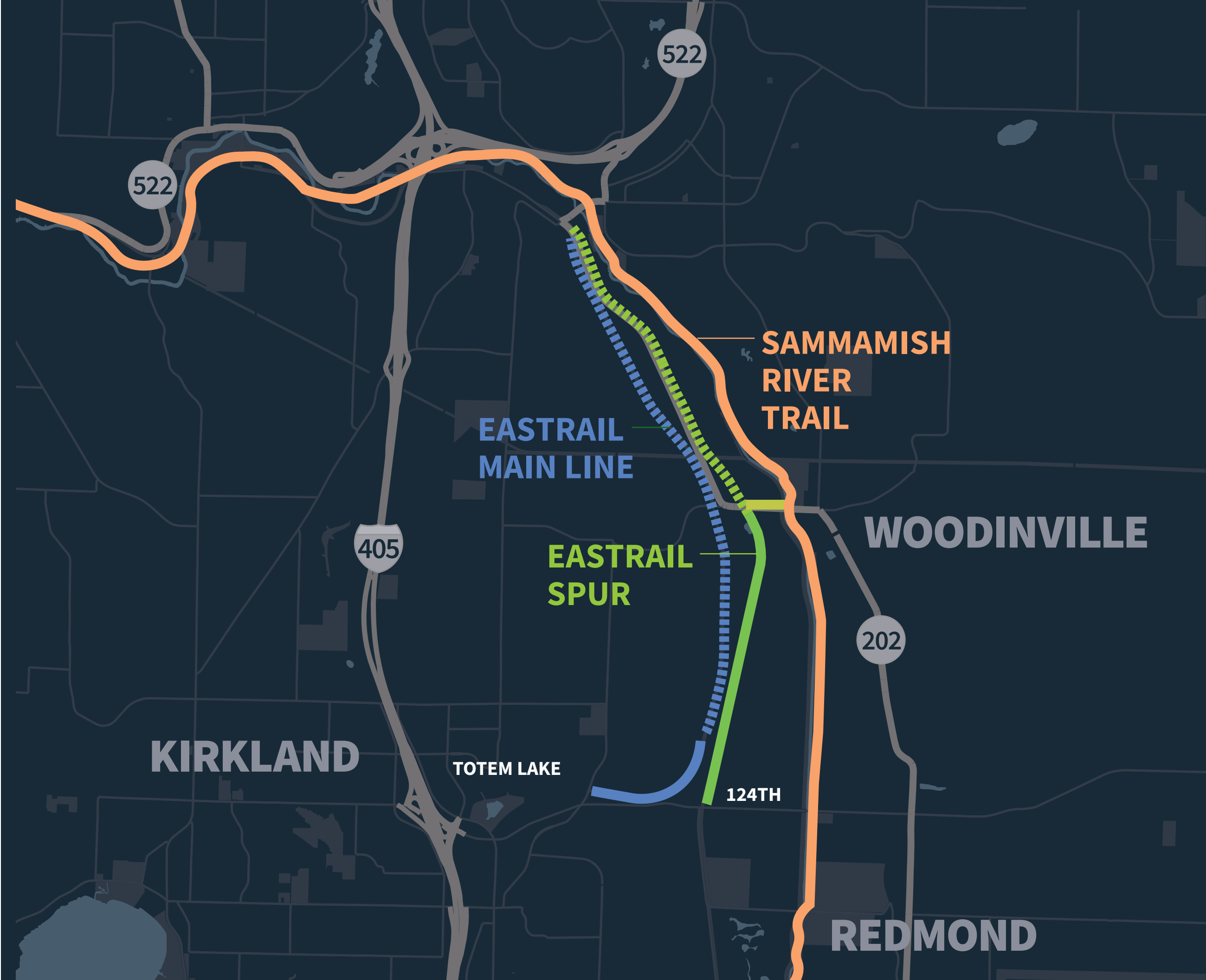


WHAT'S
OPEN NOW?





KING COUNTY 3 CORRIDORS



WOODINVILLE REGIONAL TRAILS



WOODINVILLE
EASTRAIL

WOODINVILLE
SR 202 TRESTLE

SAMMAMISH
RIVER TRESTLE

SAMMAMISH
RIVER TRAIL

EASTRAIL
SPUR

EASTRAIL
MAIN LINE

Centennial Trail South Extension

Emily Griffith



SNOHOMISH COUNTY
Conservation & Natural Resources

Eastrail Regional Advisory Council

July 25, 2025

Centennial Trail South

- 12-mile former rail corridor
- City of Snohomish to King County line
- When completed 42-miles of trail Skagit County line to King County line
- Centennial Trail South is the northernmost segment of the Eastrail
- City of Snohomish to City of Renton: 72 miles of continuous trail



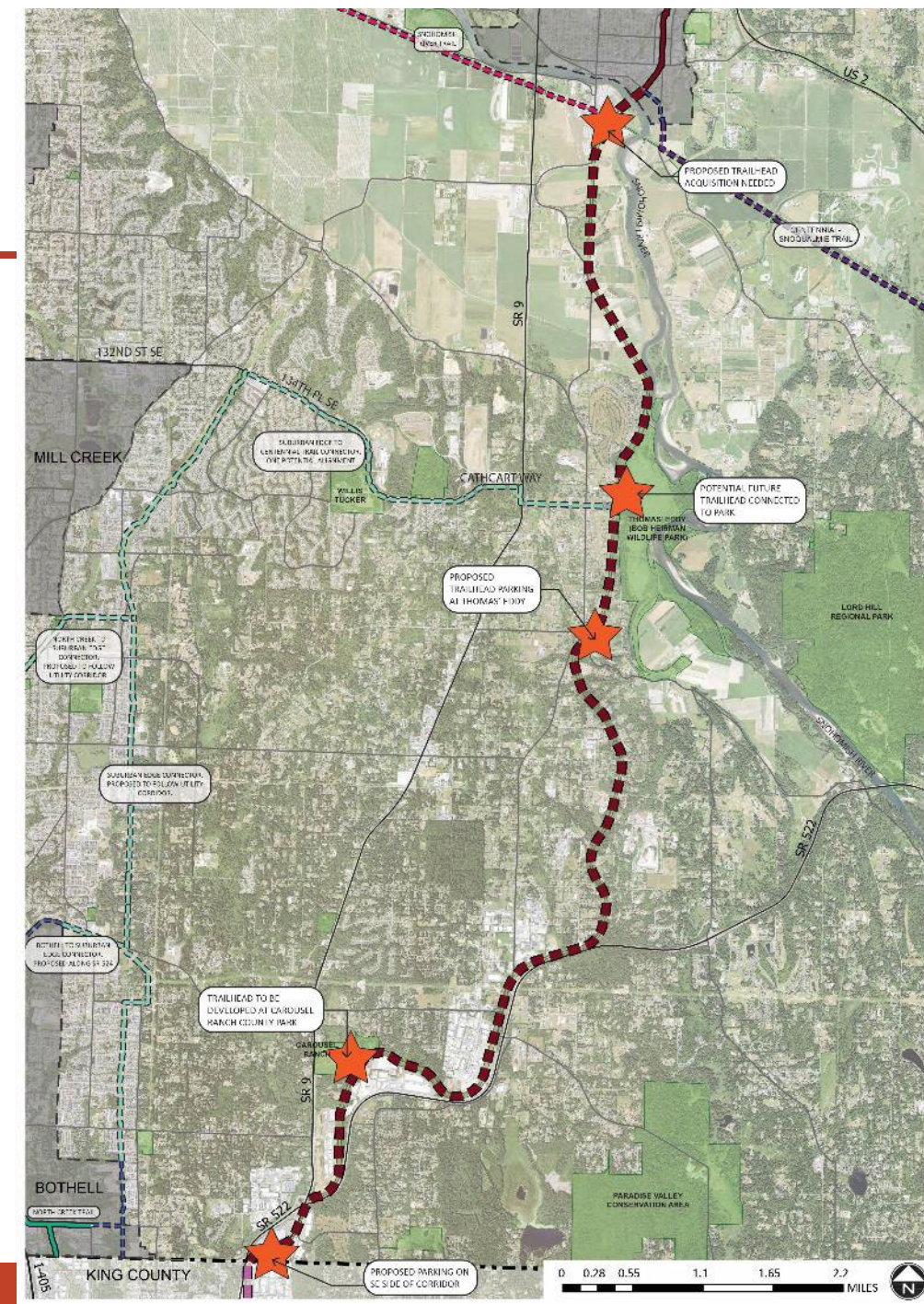
Future Regional Trail

- Rail-to-trail
- Shared-use trail
- 13 at-grade crossings
- 7 elevated sections
 - Historic railroad drawbridge
 - Wetlands
 - Fields
 - 2 road crossings



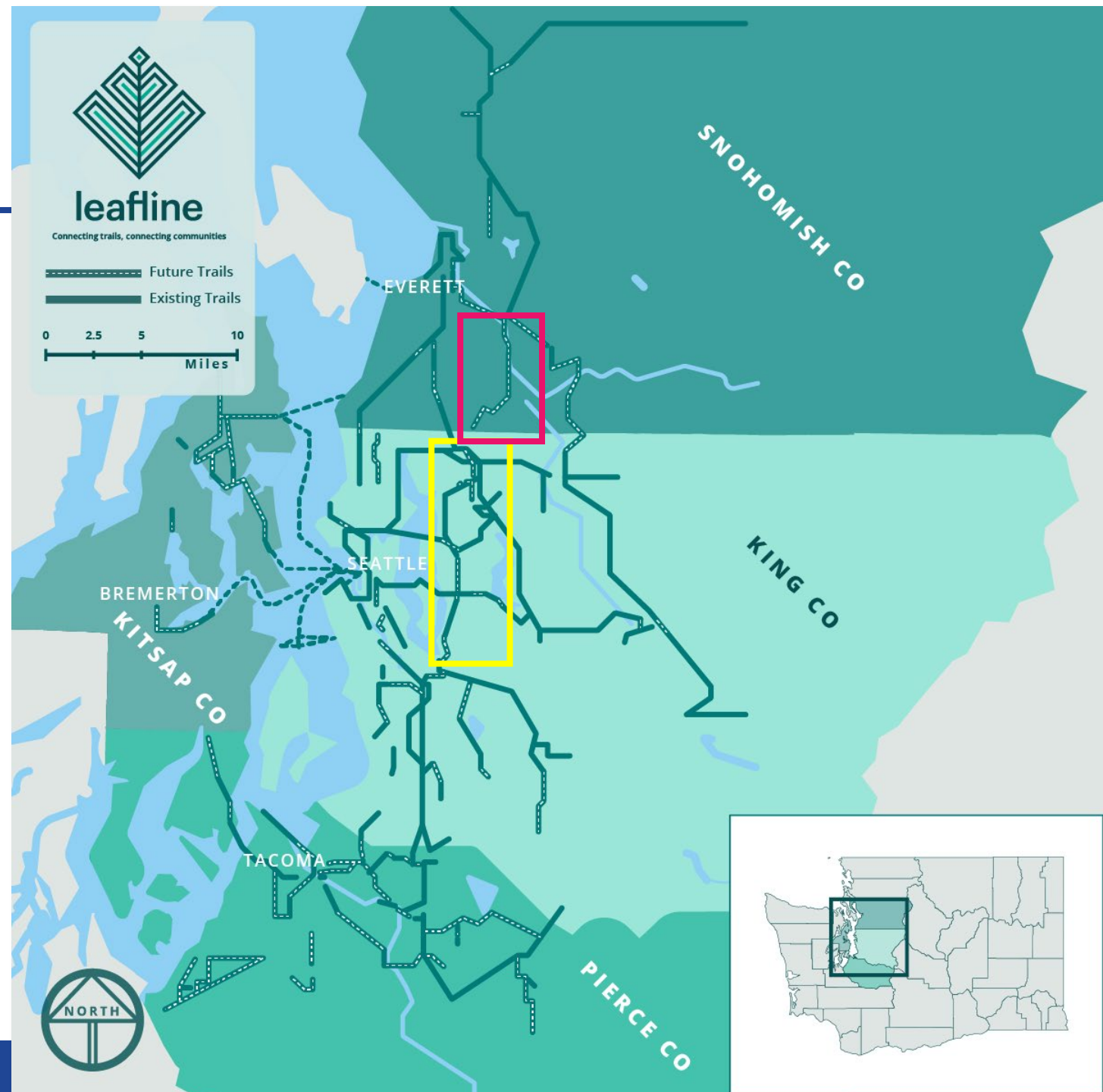
Trailheads

- 3 - 5 trailheads
 - Location TBD near Snohomish – intended to serve both Snohomish River Regional Trail & Centennial Trail South
 - Thomas' Eddy (Bob Heirman Wildlife Park)
 - Carousel Ranch
 - Up to 2 locations with additional width in ROW that could accommodate some parking



Leafline Trails Network

- Vision to connect more than 900 miles of trails throughout the Central Puget Sound
- Currently about 500 completed miles (56% complete)
- Jurisdictions, agencies, non-profits, businesses, advocates and community members



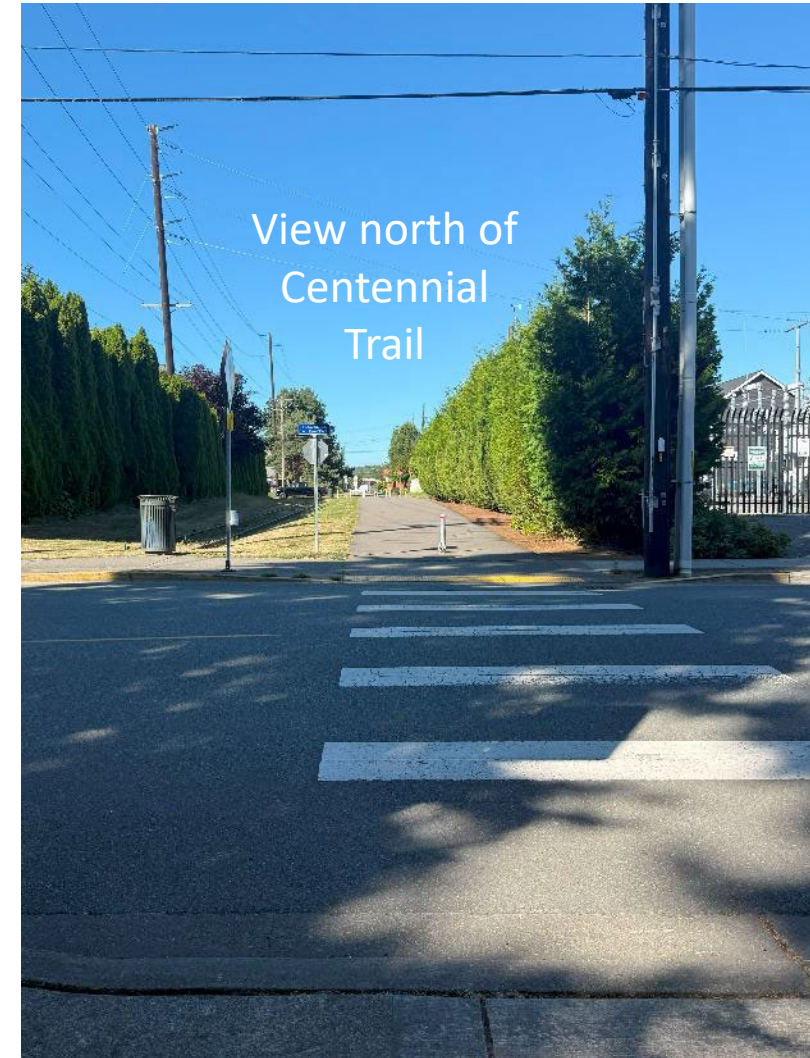
Regional Trail Nexus



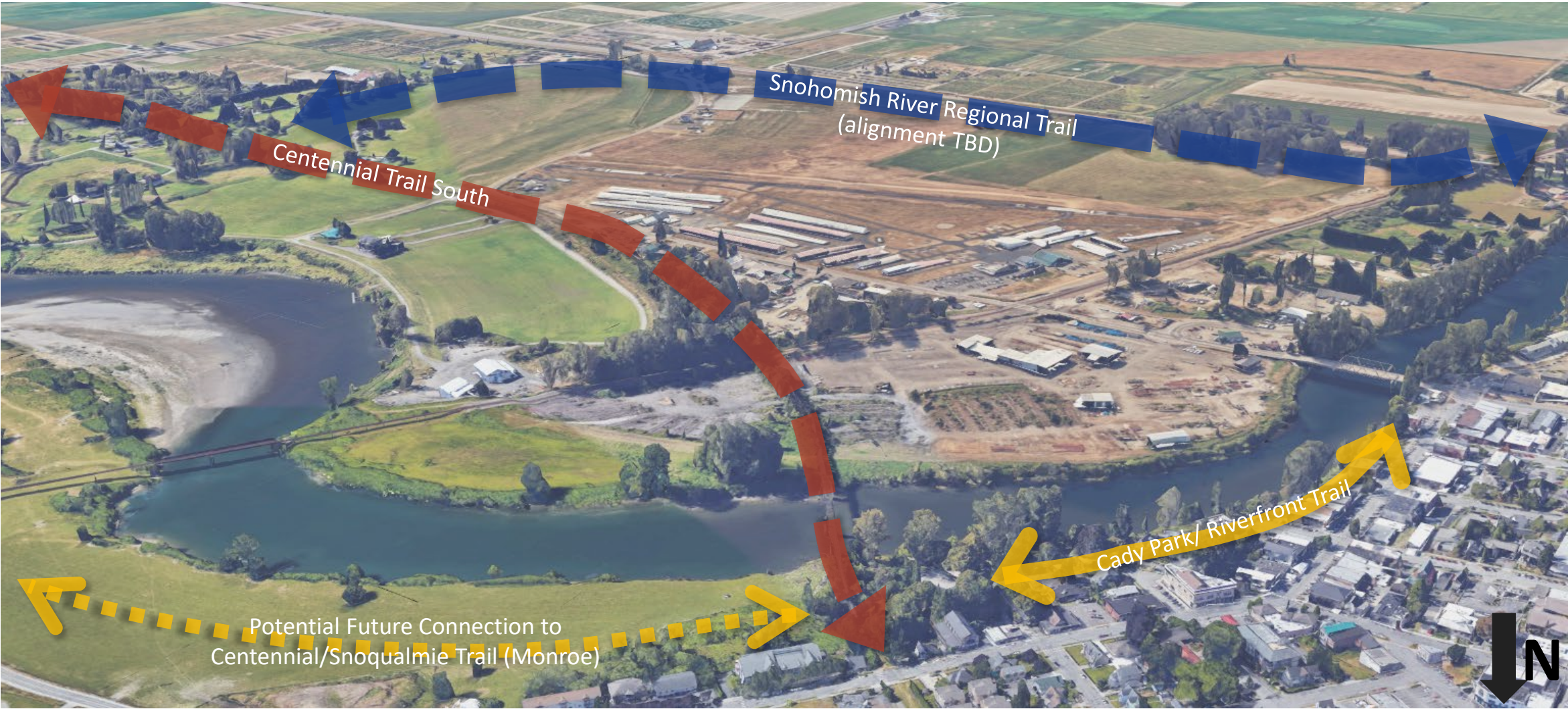
Regional Trail Nexus



Regional Trail Nexus



Regional Trail Nexus



Connection to Snohomish River Regional Trail

- 5.5-mile regional trail connection between Rotary Park in Everett and Centennial Trail South
- Roughly parallel BNSF line and Lowell Snohomish River Road
- Currently in Planning to determine alignment
- Will connect to Centennial Trail South between 0.5 and 1.5 miles south of Snohomish



Current Status

- Railbanked September 2024
- Corridor is closed to the public
- Some initial funding in hand for planning and early design
 - Local county funding
 - Grant from the State to support design through 60% completion



Conceptual Design & Feasibility Study

- Trail alignment within corridor, trail width/materials/details, trailheads
- Site analysis including environmental and engineering studies
- Public outreach
- Updated cost estimate
- Phasing plan
- Funding plan
- Potential interim trail approach including track & tie removal



Phased Development

- \$120,000,000 estimate in 2023 dollars for whole corridor
- Phased development
 - Will depend on funding
 - Sections will be based on access points on/off corridor



Timing & Next Steps

- Conceptual Design & Feasibility Study beginning 2025, continuing through 2026
- Public outreach in 2026
- Phase 1 will depend on what is decided in the funding and phasing strategy



Key Challenges

- Funding
- Difficult infrastructure
- Scale of coordination within and adjacent to corridor



Partnership

- RAC
 - Support in pursuing funding
 - Thank you for supporting 2023 and 2024 federal grant applications
 - Attendance at future events!
- Eastrail Partners
 - Outreach
 - Funding
 - Engagement





Thank You!



SNOHOMISH COUNTY
Conservation & Natural Resources