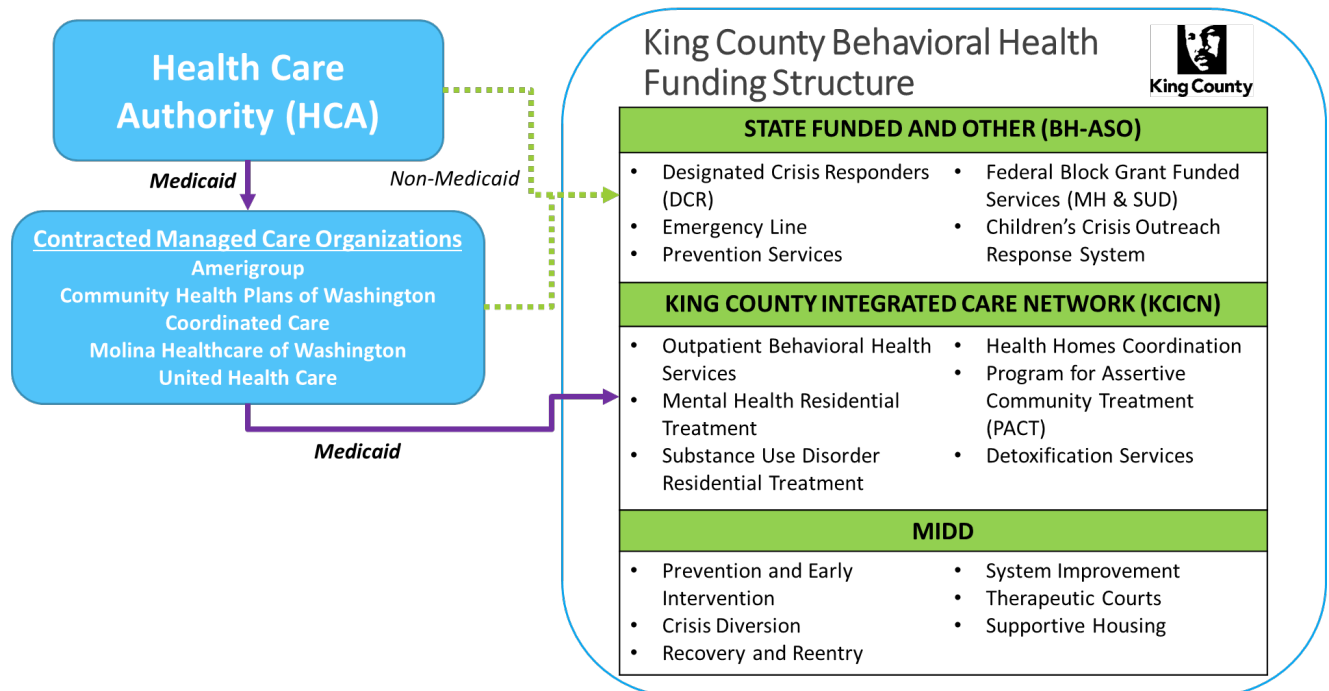


## The KCICN Improves Access to Behavioral Health Care for Residents Furthest from Care

The King County Integrated Care Network (KCICN) is a first-of-its-kind partnership between King County Behavioral Health and Recovery Division (BHRD) and community-based agencies that provide access to behavioral health services for King County residents who are eligible for Medicaid and have a significant behavioral health condition. *(Note: KCICN does not cover benefits for those with lower acuity behavioral health conditions.)* **The KCICN ensures King County residents who are eligible for Medicaid and need community-based behavioral health treatment have access to comprehensive care regardless of their managed care plans.**

### KCICN Structure

Integrated Managed Care, at the state level, requires an integrated system for physical health, mental health, and substance use disorder (SUD) services. In January 2019, King County became the only county in Washington State to join with local behavioral health system partners to establish a behavioral health provider network, the KCICN. The KCICN works in partnership with managed care plans and county-managed programs to provide coordinated, holistic services for King County’s most at-risk residents. In the past, King County contracted with these providers in a traditional payer-provider relationship. Now, this network of provider agencies collaborates jointly on how to build capacity in the region, how to improve outcomes and move to network-wide value-based purchasing methodologies. KCICN contracts with the five Apple Health managed care organizations active in the county to provide the full spectrum of Medicaid-covered behavioral health services, including outpatient behavioral health services, residential treatment, and crisis services.



## Benefits of the KCICN

The KCICN reduces administrative burdens, improves access for clients, and enables King County a comprehensive understanding of funding opportunities and challenges to inform local investments and complement gaps in Medicaid eligible services and populations.



**ADMINISTRATIVE  
SIMPLIFICATION**



**CLINICAL INTEGRATION &  
ELIMINATION OF ACCESS TO  
CARE BARRIERS**



**LOCAL + MEDICAID BRAIDED  
FUNDING MODELS**

### 1. Administrative simplification

The KCICN provides administrative services and benefits to the network by streamlining processes across all five MCOs

- Provide a single billing process, so providers don't need to bill five different MCO billing processes
- Provide "prospective billing," which provides stable and timely payments to providers so providers don't need to wait for MCO payments after service provision.
- Engage a robust and diverse network of behavioral health providers in contracts with all five MCOs, rather than losing diverse providers that don't have the administrative capacity to contract with MCOs alone.

### 2. Improve access to care

The KCICN ensures all Medicaid clients can access services through all contracted providers rather than navigating which MCO contracts with their preferred provider. The KCICN structure also holds accountability for quality services, including:

- Facilitate joint decision making on critical issues impacting providers
- Provide data-driven tool for determining client service needs and refined provider payment models
- Use data to set improvement goals and track progress toward goals

### 3. Bring together local and Medicaid braided funding models

By managing KCICN, King County is able to identify distinct barriers to Medicaid coverage and use local funds to provide a more **comprehensive** network of services.

- Fund Outreach and Engagement through local MIDD behavioral health sales tax funds to pay for providers to proactively reengage clients furthest from care. These reengagement efforts increase access to care and increase utilizations rates for providers. However, Medicaid does not pay for this critical work. In 2022, 23 provider agencies reached out 34,729 times to 11,603 participants regarding engagement in outpatient care through this initiative.
- Combine Medicaid, state crisis, and local funding to fully fund crisis services for individuals regardless of Medicaid status. This includes the current Crisis Solutions Center and potential Crisis Care Centers levy, if approved by voters in April 2023.



# Behavioral Health Providers

## The King County Integrated Care Network

