

Crisis Care Centers Initiative

July 2024

CCC Levy Implementation Plan: [King County - File #: 2024-0011](#)

Questions? Email: CCCLevy@kingcounty.gov

CCC Initiative Newsletter: [Subscribe here](#)

CCC Initiative Website: [Visit here](#)

 King County

DCHS

Department of Community
and Human Services



Delivering care across the
Crisis Continuum

King County
Regional Crisis Line
206-461-3222

CRISIS CARE CENTERS

Levy Purposes

Paramount Purpose



CRISIS CARE CENTERS

Establish and operate a regional network of five crisis care centers in King County, with at least one in each of the four crisis response zones and one serving youth.

Supporting Purpose 1



RESIDENTIAL TREATMENT

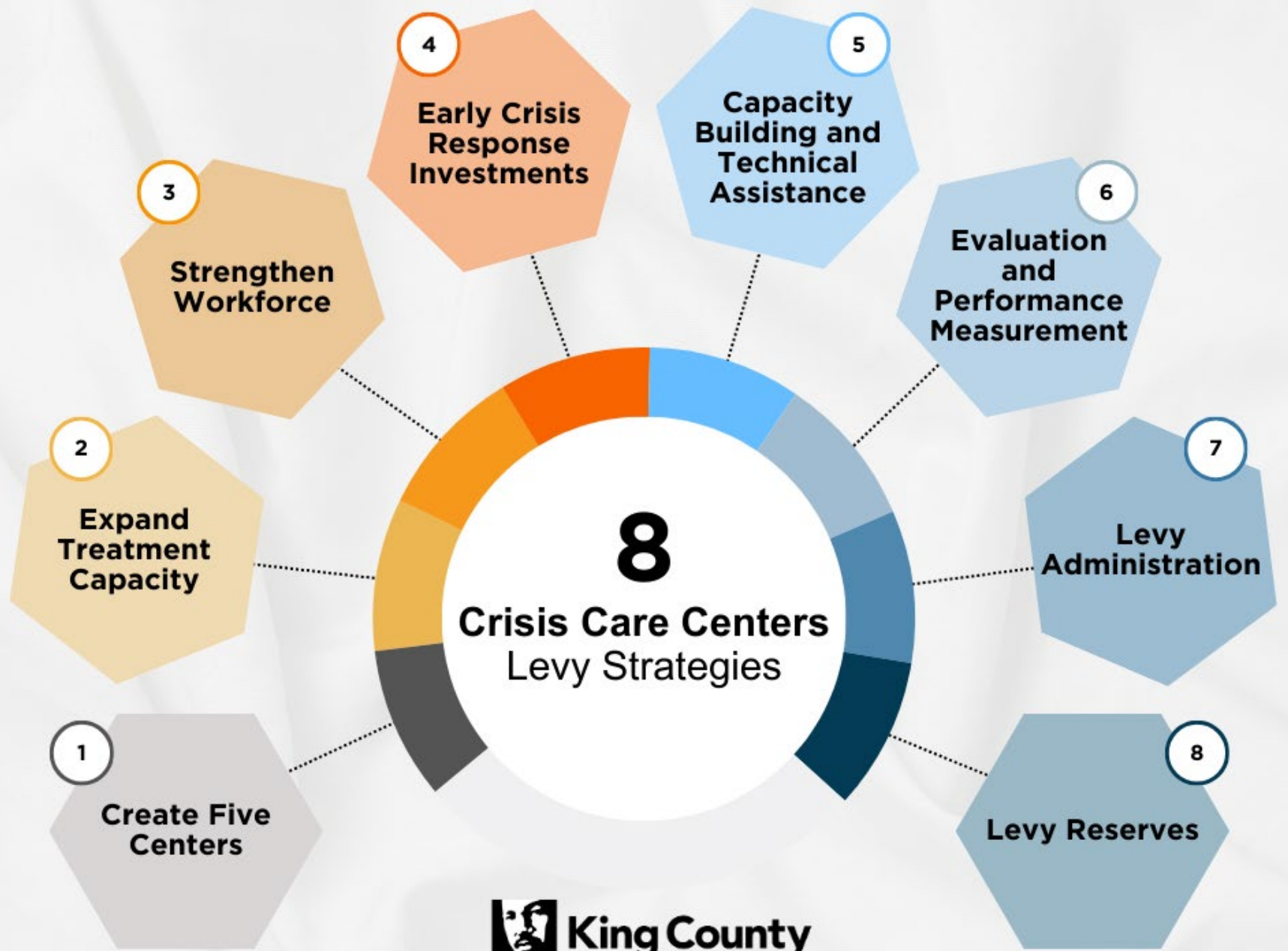
Restore the number of mental health residential treatment beds to at least 355 and expand the availability and sustainability of residential treatment in King County.

Supporting Purpose 2



COMMUNITY BEHAVIORAL HEALTH WORKFORCE

Increase the sustainability and representativeness of the behavioral health workforce in King County.



CRISIS CARE CENTERS

Levy Investment Summary

\$626.8M

Create and operate
five crisis care centers.

\$173M

Restore, expand, and sustain
mental health residential
treatment capacity.

\$163.7M

Strengthen the community
behavioral health workforce.

\$67.7M

Early crisis response
investments.

\$111.7M

Capacity building and technical
assistance, performance and
evaluation, election and planning
costs, and levy administration.



King County



CRISIS CARE CENTERS LEVY

“There is no quality without equity, and there is no equity without quality”

- 1 Increase access to care for populations experiencing behavioral health inequities
- 2 Increase access to Culturally and Linguistically Appropriate Services
- 3 Increase the representativeness of the behavioral health workforce
- 4 Implement accountability mechanisms



Culturally and Linguistically Appropriate Services

Culturally and Linguistically Appropriate Services (CLAS) are nationally recognized as a way to improve care quality, help reduce health disparities and promote health equity.

The Crisis Care Centers Levy will invest in expanding access to CLAS by:

Ensuring that crisis care centers offer CLAS.



Investing in post-crisis follow-up services that include CLAS.



Supporting crisis care center operators with capacity building and technical assistance to strengthen their ability to provide CLAS.



Investing in behavioral health providers with expertise in CLAS to build their administrative and workforce capacity.

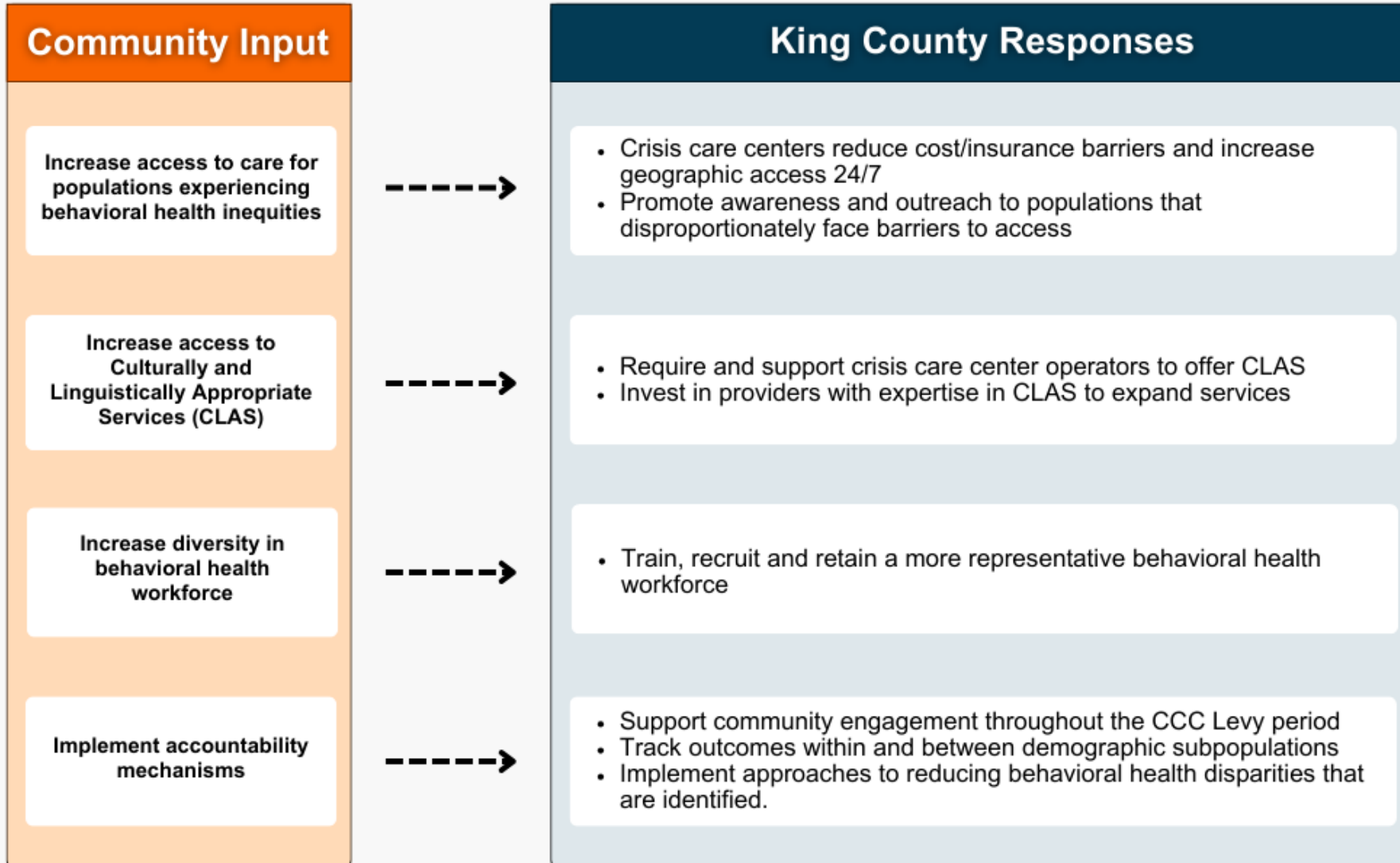


Contracting with organizations with expertise in CLAS to help DCHS define quality standards and quality improvement activities to better serve populations experiencing behavioral health inequities.



CRISIS CARE CENTERS LEVY

Addressing Behavioral Health Equity



Community Engagement

- Take and share our survey
- Schedule a meeting, anytime
- Attend a Quarterly Conversation—kicking off this summer
- Providers: What you need to know
 - 12-1:30pm on July 26th
- Jurisdiction Engagement



SCAN ME

CRISIS CARE CENTERS COMMUNITY SURVEY
We want to hear from you!

<i>¡Queremos escuchar de usted!</i>	我們希望聽到您的意見!
<i>Chúng tôi muốn nghe ý kiến của quý vị!</i>	我們希望聽到您的意見!
<i>Ждем вашего ответа!</i>	여러분의 의견을 듣고 싶습니다!
<i>Waxaan rabnaa inaan ka maqalna!</i>	Ми хочемо почути від вас!
<i>ਅਸੀਂ ਤੁਹਾਡੇ ਤੋਂ ਸੁਣਨਾ ਚਾਹੁੰਦੇ ਹਾਂ!</i>	

 King County

Behavioral Health Crisis Resources

King County Resources

24-Hour Regional Crisis Line: 866-427-4747

Provides immediate help to individuals, families, and friends of people in emotional crisis. This crisis line can help you determine if you or your loved one needs professional consultation or connection to mental health or substance use services like mobile crisis or a next-day appointment.

King County BHRD Client Services: 800-790-8049

For people interested in mental health services.

SUD Residential Phone Line: 855-682-0781

For information about King County substance use residential services, Monday-Friday 9am-5pm.

King County 211

For the most comprehensive information on health and human services resources in King County.

Washington State Resources

WA Recovery Help Line: 866-789-1511

A 24/7 anonymous and confidential help line that provides crisis intervention and referral services for Washington State residents. *Who answers:* Professionally trained volunteers and staff

WA Warm Line: 877-500-WARM (9276)

Confidential peer support help line for people living with emotional and mental health challenges. *Who answers:* Specially-trained volunteers who have lived experience with mental health challenges

988 National Suicide & Crisis Lifeline

Provides free and confidential emotional support to people in suicidal crisis or emotional distress 24 hours a day, 7 days a week

Call/Text	9-8-8
Chat	988lifeline.org
Veterans Crisis Line	9-8-8 then press 1
Spanish Lifeline	9-8-8 then press 2
Spanish text/chat	Text "AYUDA" to 988
Native and Strong Lifeline	9-8-8 then press 4
American Sign Language	TTY or dial 711, then 988

Youth & LGBTQ+ Resources

Teen Link: 866-833-6546

Confidential and anonymous help line for teens in Washington state. *Who answers:* Trained teen volunteers

Trevor Project: 866-488-7386

24/7 free, confidential and anonymous national help line for LGBTQ+ young people. *Who answers:* Trained counselors

TRANS Lifeline: 877-565-8860

24/7 hotline run by trans people, for trans people to connect people to community support and resources needed to survive and thrive



Department of Community
and Human Services



Instagram



Blog



YouTube



Website



Data Dashboard