

# Child Care Health Consultation Systems Development Overview

## BEST STARTS INVESTMENT IN CHILD CARE HEALTH CONSULTATION SYSTEMS DEVELOPMENT

Child care health consultation (CCHC) is a strategy that promotes the health and development of children, and supports families and child care providers as they ensure healthy, safe, and supportive early learning environments. In 2018, Kindering received grant funding from King County Best Starts for Kids to gather partners and consider ways to develop a system that supports the work of child care health consultation.



At Kindering, we have begun by engaging in community conversations that provide information from all levels of systems and providers. The input from participants will result in recommendations to develop accessible, inclusive, culturally and linguistically responsive, and effective system of CCHC, and strengthen the larger systems of which CCHC is a part.

Students with disabilities represent 13% of the nation's preschoolers, but they account for 75% of all suspensions and expulsions.

### PROJECT GOAL

Develop an accessible system through which different people offering child care health consultation services are connected, supported, well-trained, and working together to address unmet needs and alleviate race- and place-based inequities.

### PRINCIPLES GUIDING OUR WORK

#### Advance Racial Equity.

Be vigilant in engaging stakeholders who may be adversely affected, identify and call out root causes of inequity early on, and consider how recommendations for the system affect child care providers and caregivers of color so that all have equitable access to services and unintended consequences are avoided.

#### Strengthen Our Efforts.

Seek to develop a system that builds upon the successes, skills, and ideas of families, child care providers and caregivers, and child care health consultants as they help children be healthy and safe.

#### Draw on the Assets of Diverse Perspectives.

Think broadly in our definition of CCHC so that we include a diverse representation of the roles, qualifications, and approaches needed to provide support to child care providers and caregivers.

#### Focus on Improved Health and Safety Practices.

Prioritize changes that address needs and remove barriers to enhance practice that leads to improved health and safety of children.

#### Drive Toward Increased Visibility and Support.

Call attention to the benefits of CCHC and identify other strategies that increase community endorsement and speed outward adoption and support.

#### Balance Diverse Interests

Help stakeholders move towards alignment of action.

Sudden Infant Death Syndrome (SIDS) is the leading cause of death among infants 1 month to 1 year old. 20% of SIDS deaths occur in child care settings.

African American boys make up 18% of preschool enrollment, but 48% of preschoolers who are suspended more than once.

## PARTNER ENGAGEMENT STRATEGIES

### Meaningful Conversations

Focus groups, community cafés, and summits bring together families and professionals in different parts of early learning and child health to learn about the many needs and priorities within King County.

### Build Partnerships and Networks

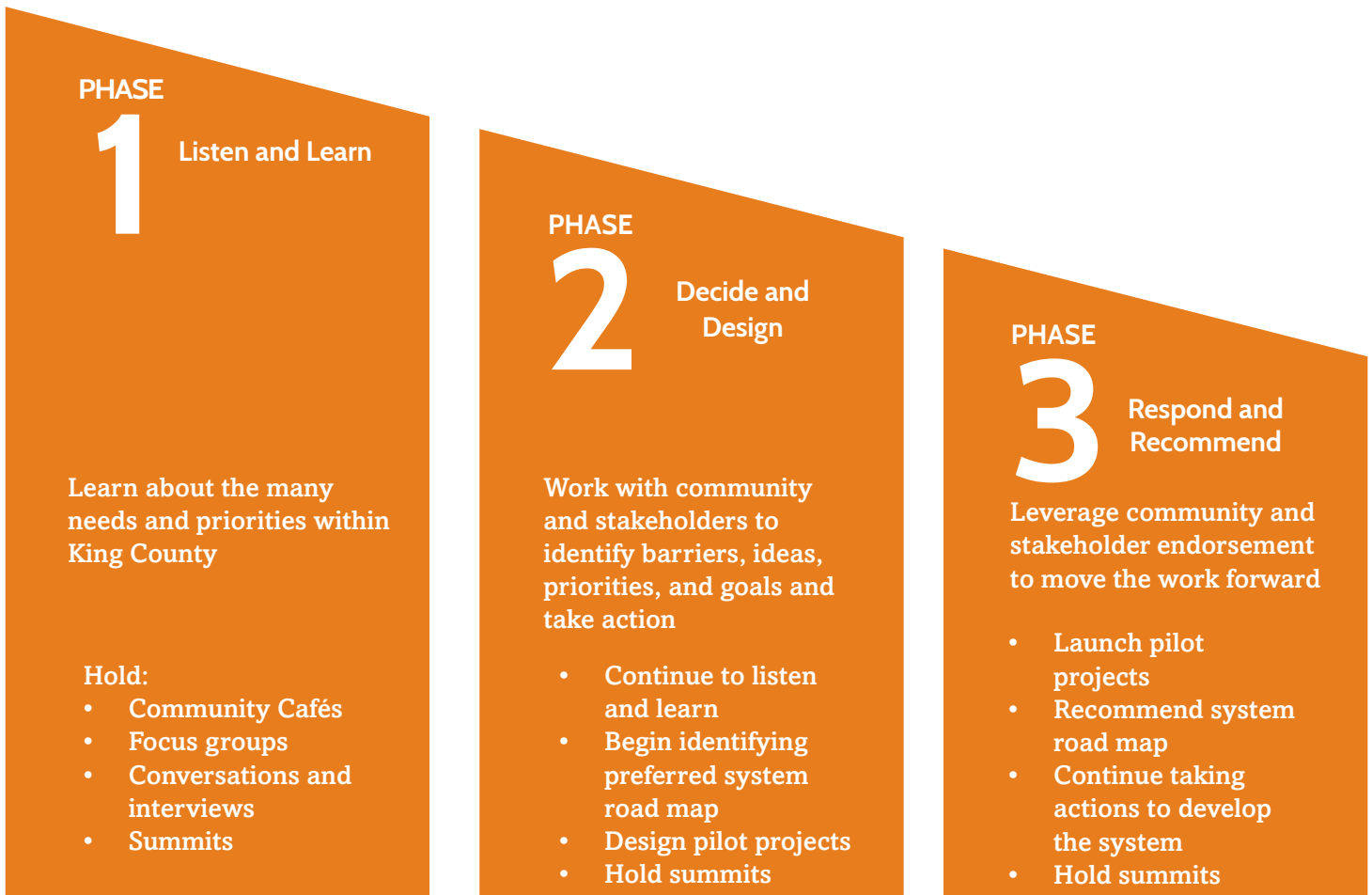
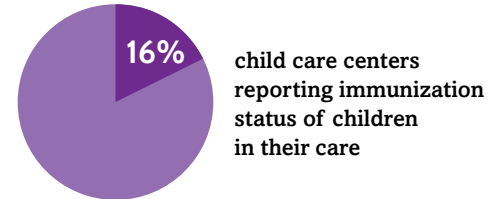
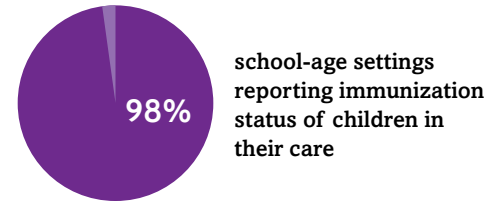
Build strong relationships among people and organizations to align regional and state efforts so that CCHC is seamlessly integrated within early learning systems.

### Build Social and Political Capital

Test ideas, increase engagement, and build momentum through early actions and successes.

### Tell the Story

Share data and stories that describe how CCHC supports families, caregivers, and providers to create healthy, safe, and supportive early learning environments for all children in their care.



Community and stakeholders are engaged and consistently advocating for CCHC