

Wayfinding to King County Resource Fair at the Microsoft Conference Center-Building 33 May 28, 2026

Destination	Microsoft Conference Center (MSCC) Microsoft Building 33, 16070 NE 36th Way, Redmond, WA 98052
--------------------	--

Arriving by Public Transit

Skip the stress and expense of driving and kick off the King County Resource Fair feeling refreshed. Redmond Technology Station (RTS) is a nearby hub for regional and local public transit buses and the 2 Line Link light rail.

Relax on the 2 Line to RTS from 24 stations between Downtown Redmond, Bellevue, Seattle, Shoreline, and Lynnwood. From south of downtown Seattle, transfer from the 1 Line to the International District Station.

To plan your trip on public transit, visit the [Sound Transit Trip Planner](#) and the “[How to pay](#)” page for information on ways to pay public transit fares in Puget Sound.

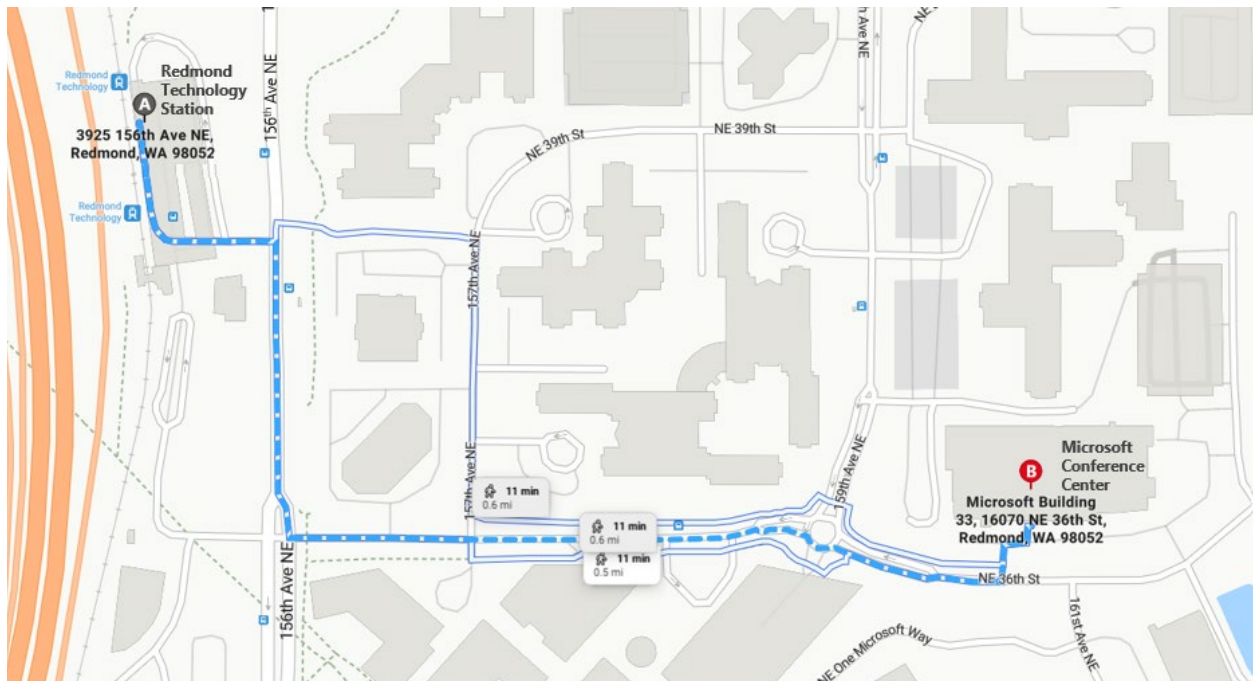
From RTS, walk [[Link Walking Directions](#)] or ride a shuttle that will loop between RTS and Microsoft Conference Center (MSCC) every 5 minutes [[link to shuttle info](#)].

Destination name	Redmond Technology Station (RTS)
Destination address (paste from maps)	https://maps.app.goo.gl/s8CaGdbcEdCHe9To7

Walking Directions from Redmond Technology Station to Microsoft Conference Center, Building 33

Begin at	Redmond Technology Station (RTS) 3929 156th Avenue NE, Redmond, WA 98052
Destination	Microsoft Conference Center (MSCC) Microsoft Building 33, 16070 NE 36th Way, Redmond, WA 98052

- Exit the Redmond Technology Station.
- Head south on **156th Ave NE**.
- Turn **left** onto **NE 36th St**.
- Slight **right** toward **NE 36th Way**, then continue onto **NE 36th Way**.
- Turn **left**, then turn **right**.
- **Destination will be on the left** (Microsoft Conference Center, Building 33).



[Alt text: Image is a walking map between Redmond Technology Station (RTS) and Microsoft Conference Center at Building 33. The directions are described in the body of the text]

Shuttle Service

Guests may ride a free Microsoft shuttle between Redmond Technology Station (RTS) and the Microsoft Conference Center, Building 33 (MSCC).

Shuttles will loop between RTS and MSCC from 9am to 2pm, departing about every 5 minutes. The ride will take about 5 minutes.

At RTS, volunteers in green shirts will guide riders to the designated shuttles. Board the shuttle in the “Microsoft Fixed Route Shuttle” zone, which is on the west side of the RTS bus loop (at the ground level under the RTS garage). Shuttles will display a King County Fair sign, and “Reserved” on the digital reader board.

Guests will be asked to wear a “Visitor” label visibly on their clothing while riding the shuttle and while at the Fair.

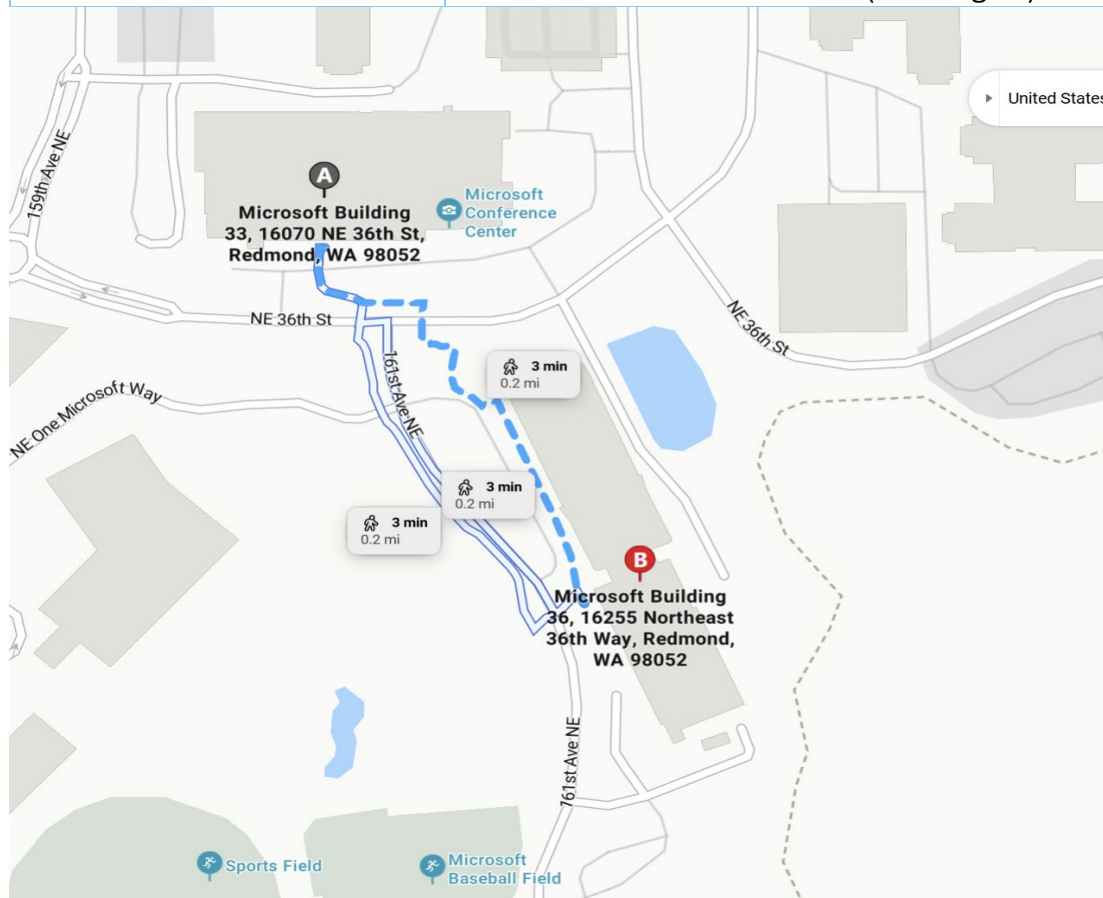
Accessible shuttles (vans with lifts) are available upon request. Ask a volunteer to call for an accessible shuttle.

Arriving by Car: Parking at Building 33/34 & Building 36

Guests may use the above-ground and underground parking at Buildings 33/34 and 36. Buildings 33/34 have connected underground parking.

Guests are welcome to park in any available parking space that is not designated for specialized use, such as Facility Vehicles or GIVE campaign.

Parking Garages 33/34 are connected underground	16070 NE 36th Way, Redmond, WA 98052
Walking instructions	Follow the signs and balloons to the elevator, then take the elevator up to floor 1.
Parking Garage 36	16255 NE 36th Way, Redmond, WA 98052
Walking instructions	Exit the garage, then follow the balloons and signs to the Microsoft Conference Center (Building 33).

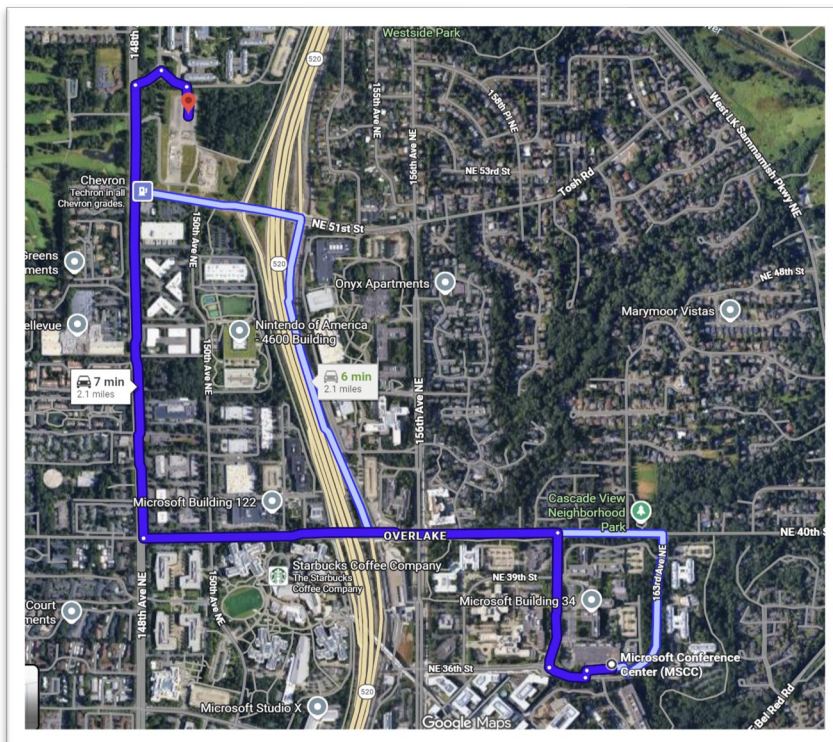


[Alt text: image is a map showing the footprint of parking areas at Microsoft Conference Center in the Building 33/34 Garage and Building 36 Garage, and the walking route from Building 36 to Building 33, Microsoft Conference Center.]

Arriving by Charter or School Bus

After dropping riders at the Microsoft Conference Center, bus drivers are asked to park and wait in the designated above-ground parking at Microsoft’s RedWest Building.

Begin at	Microsoft Conference Center, Building 33 16070 NE 36th Way, Redmond, WA 98052
Destination	RedWest Building Microsoft W Campus Access Rd, Redmond, WA 98052



[Alt text for image: Map showing driving directions between bus parking and Microsoft Conference Center]