

GENERAL INDEX - DEFENDANT - SUPERIOR COURT, KING COUNTY, WASH.

DEFENDANT	GIVEN NAME		PLAINTIFF	NUMBER OF CAUSE	DATE OF FILING		
	ABCD EFGH	IJ KLMNOP QRSTUVWXYZ SECOND NAME			Month	Day	Year
<b>Dr-Dz</b>							
Dyson, et al, et al		James	A. Maen, Ann M. et al	693101	Jan	25	1968
Dvorak, et al		Edward	J. Dvorak, Louise et al	694965	Mar	25	
Dyke, et al			J. Chome, David L.	695706	-	27	
Dwyer, et al		Arthur (American)	Willms, Carl W.	698126	Jul	1	
Dyer, et al		Donald (Bessie)	Ralph & Daniel Williams, (Mary)	698485	-	15	
Dyer		Cecily	Central Savings Bank with City of King Co.	700513	Sep	13	
Dyson, et al, et al		Friedrich	GARN. DEFUL. Universal Lumber Co	701800	Nov	27	
Dynes, Ltd		George	Montgomery, Arthur	703858	Dec	23	
Dynes, Ltd, et al		George	W. J. K. Kells Realty & Investments	705607	Feb	18	
Dynamic Analysis, Inc		Hazel	W. Random House Interiors	705628	-	18	
Dyer, et al		Shirley H.	GARN. DEFUL. Idaho Men, Inc	697513	-	18	
Dyer, et al		Wick	D. Coy, Calvin E. Jan	706703	Mar	18	
Dynamic Analysis Inc		Wick	GARN. DEFUL. Metropolitan Life Insurance Co.	707586	Apr	9	
Dunnell, et al		Wick	X Martinez, David J.	707686	-	11	
Dyer, et al		Wick	GARN. DEFUL. J. Blouin, J. Lucien E.	700439	May	29	
Dyno Industries, et al		Wick	Cal Kent & Associates	710435	Jun	24	
Dybbing, et al		Harvey (Helene)	Donaldson, Emil	710465	-	25	
Dwyer, et al, et al		John (Jeanne)	Watson, West, Inc.	710964	Jul	9	
Dye, et al, et al		Lee	Washington Credit Inc.	712446	Aug	18	
Dvorak, et al, et al		Lee	Small Nat Insurance Co of America	712466	-	18	
Dwyer, et al, et al		Lee	B. State of Washington	712452	-	18	
Dyer, et al		Lee	Crown Automobile Ins. Co.	714338	Oct	6	
Dynamac Machine Products Co. Inc.		Lee	Continuation Collectors Inc.	714338	-	6	
Dunnell, et al, et al		Lee	Olivette Underwood Corp.	714382	-	7	
Dyer		Lee	Association Builders Inc.	714919	-	21	
Dybbing, et al, et al		Lee	Easton's Glass Paint Co.	715362	-	31	
Dybbing, et al, et al		Lee	Fidelity Finance Co.	715468	Nov	4	
Dybbing, et al, et al		Lee	P. Fidelity Finance Co.	716530	Dec	3	
Dybbing, et al, et al		Lee	Olivette Underwood Corp.	718254	Jan	21	1970
Dybbing, et al, et al		Lee	Hacker, J M.	718535	-	25	
Dybbing, et al, et al		Lee	Wagner, H. Thomas	718888	Feb	5	
Dybbing, et al, et al		Lee	Wagner, H. Thomas	719039	-	9	
Dybbing, et al, et al		Lee	Wagner, H. Thomas	720834	Mar	20	
Dybbing, et al, et al		Lee	Wagner, H. Thomas	722503	Apr	25	
Dybbing, et al, et al		Lee	Wagner, H. Thomas	722795	May	5	
Dybbing, et al, et al		Lee	Wagner, H. Thomas	721328	-	13	
Dybbing, et al, et al		Lee	Wagner, H. Thomas	724582	Jun	9	
Dybbing, et al, et al		Lee	Wagner, H. Thomas	724474	-	17	
Dybbing, et al, et al		Lee	Wagner, H. Thomas	726477	July	29	
Dybbing, et al, et al		Lee	Wagner, H. Thomas	731099	Nov	25	
Dybbing, et al, et al		Lee	Wagner, H. Thomas	731969	Dec	17	



# GENERAL INDEX - DEFENDANT - SUPERIOR COURT, KING COUNTY, WASH.

DEFENDANT	GIVEN NAME	PLAINTIFF	NUMBER OF CAUSE	DATE OF FILING		
				Month	Day	Year
E. Sam Dick Co. Inc., etano		Panorama House Inc., etal	655885	June	16	66
E. H. Savage Inc.	GARN. DEFT.	Ryan J. Timothy	652474		31	
E. H. Langston B.		Industrial Service Corp d/ba	657269	Apr	11	
E. C. Burkheimer Co etal		Penola Hall Bank.	659409	May	14	
E. L. Hull Floor Co., etal	(Add/Def)	South Mortgage Co.	654772	July	18	
E. C. Pentus & Assoc.	GARN. DEFT.	Northwest Finance Co.	637896		28	
E. C. Tire Wholesale, etano		Berry, Lura, etal	665410	Sept	10	
E. A. & L. Construction Co. Inc., etal		Penton, City of	666340		27	
E. D. McElgathys Assoc.		American Casualty Co.	667490	Oct	18	
E. C. Phillips & Sons Inc. etal		Aggie's Garage etal	674449	Feb	20	1967
E. H. C. Construction Inc, etal		Schlagobach, Major F. etal	674527		24	
E. C. H. Inc, etal		Reber, Donald R., etal	673673	Mar	17	
E. A. & L. Construction Co etal		Smith Brothers Heating Co	676203		27	
E. H. Savage Inc etal		Handwick, Russell H., etal	677266	April	15	
E. L. Electric, etal		United Finance Corp Loan Assoc	681675	June	28	
E. L. Electric, etal		" " " " " "	681676		28	
E. L. Electric, etal		" " " " " "	681677		28	
E. L. Electric, etal		" " " " " "	681679		28	
E. L. Electric, etal		" " " " " "	681681		28	
E. B. Carpet Mills, Inc.		Daly, William C.	693594	Feb	9	1968
E. R. Smith & Sons Inc. etal		Johnson, Charles F. etal	695019	Mar	26	
E. A. & L. Construction Co.		Pauch, Richard C. etal	695309	Apr	3	
E. A. & L. Construction Co. etano		Clauser, Leon C. etal	696576	May	13	
E. E. Field Transfer & Storage Co, etano		World Van Lines, Inc	699144	Aug	2	
E. E. Meats	GARN. DEFT.	Cornell, Glen F.	698196		8	
E. J. Leader Boat Trailers, etal		Thomas, Joseph A. Jr.	699477	Oct	25	
E. A. & L. Construction Co		Int'l Joint Construction Co.	705166	Feb	5	1969
E. A. & L. Construction Co, etal		Bissemman, Adam	705863		25	
E. J. Towle Company.		The Prudential Ins. Co of America	706715	Mar	18	
E. M. Plumbing etal		Allen, Fred L. etal	709852	June	10	
E. A. & L. Construction Co. Inc. etano		State of Wash, Dept of Labor Industries	710214		19	
E. A. & L. Construction Co Inc		Alford Collections Corp.	705860		27	
E. P. R. Plumbing etal		Evans, Robert S.	711915	Aug	1	
E. A. & L. Construction Co. etano		COMMERCIAL SERVICE COMPANY, INC	111922		5	
E. A. & L. Construction Inc.		Puget Sound Power & Light Co	712685		22	
E. C. H. Inc.		Bank of Japan etal	713140	Sept	19	
E. B. Anderson Inc		Credit Research Bureau Inc	714042		26	
E. A. Wood Inc	GARN. DEFT.	King Co. Transit Men Inc	718260	Oct	21	
E. A. & L. Construction Co etano		Trust Funds Service Inc	714963		22	
E. A. & L. Construction Co etano		Lillis, James etal etal	715452	Nov	3	
E. E. Inc etal		Association Collectors Inc.	715855		13	
E. M. Plumbing etal		Hofsteyer, Jeanne	716257		25	
E. J. Jewell Mfg. Co.		Lyon, William	716855	Dec	12	
E. E. Meats, Inc.		Johnson, William J.	716891		11	
E. R. Phillips Co etal		Chubb & Son Inc	717220		19	
E. E. Contractors, Inc (Interim)		Rivers, Wade etal etal	714424	Feb	2	1970
E. R. Construction Co etal		Red Tee Co	720187	Feb	6	
E. R. S. Construction Co etano		Associates General Contractors	720703	Mar	15	
E. E. Meats		Johnson, William	716891		19	
E. E. E. Construction Inc etal		Western Commercial Equipment	716020	Nov	15	1969

# GENERAL INDEX - DEFENDANT - SUPERIOR COURT, KING COUNTY, WASH.

DEFENDANT	GIVEN NAME ABCD EFGH IJ KLMNOP QRSTUVWXYZ <small>Second Initial</small>	PLAINTIFF	NUMBER OF CAUSE	DATE OF FILING		
				Month	Day	Year
E.A.L. Const. Co et al		Coast Mortgage Co	721478	Apr	3	-
E.A.L. Const. Co et al		Coast Mortgage Co	721479		5	-
E.A.L. Const. Co et al		Coast Mortgage Co	721480		3	-
E.A.H. Contractors Inc et al		T.T. Trucking Inc	721532		3	-
E & W Plumbing et al		Worsted, Thomas J et al	721529		6	-
E & W Realty et al		Burton, Ramon C et al	721556		20	-
E & W Construction Inc		Rock, Herman C et al	71574		21	-
E & W Contractors Co et al		Ballard Mortgage Co et al	722851	May	6	-
E & W Construction Co et al		Pacific Northwest Collections Inc	724114	June	4	-
E & W Construction Co Inc et al		Largest Lumber Firm & Light Co	721563		9	-
E & W Construction Co et al		Bayles Brothers, Inc	724572		15	-
E.H.B. Inc et al		Cagers, Richard W	727240		19	-
E.A.H. Construction Co et al		Sea-Tac Asphalt Co	728700	Sept	28	-
E.D.M. Corporation	RECEIVERSHIP	Spurgeon, Chester et al et al	729066	Dec	6	-
E.C.L. Construction Co et al		Lottel, Roy W. et al	729616		20	-
E & E Electric et al		GAYLE HILDERY	729736		22	-
E & E Corp		Edward W Meeks et al	730445	Nov	10	-

# GENERAL INDEX - DEFENDANT - SUPERIOR COURT, KING COUNTY, WASH.

DEFENDANT	GIVEN NAME		PLAINTIFF	NUMBER OF CAUSE	DATE OF FILING		
	ABCD EFGH	I J KLMNOP QRSTUVWXYZ			Month	Day	Year
Earl		Roy D.	Earl, Myrna L.	652672	Jan	14	1966
Earls		Weyman W.	Earl Mary L.	652962		20	-
Eaton	Donald	E.	Eaton Stella M.	653769	Feb	4	-
Eastland stuy etuo	Arthur	L.	Parto Loans.	654451		16	-
Earshheart		Ronald L.	Earnheart Roberta	654721		23	-
Eastwood stuy	(J.D) Madwin		Coast Credit Corp.	654791		24	-
Eastside Motor Co etal		(Yvonne) J	Peyser Edward M stuy	655009	Mar	1	-
Egan stuy etal	Douglas		Bordo Jack B	656119		21	-
Eger stuy	Duane (Dorothy)	M	Kehoe Frank M.	656237		22	-
Eastgate Sewer Dist.			Lakewood Terraces Inc	656252		23	-
Easter stuy		Michael T	Voris Evelyn	656785		31	-
Eagon stuy etuo	(Janet) L. Roy		Kaiser Charles C stuy	656755		31	-
East Hill Community Hall (assoc)			Wash. State	657054	Apr	6	-
Eagle 7 internal order of Aeris No 1722	GARN. DEFDT.		Household Finance Co.	641672		20	-
Easter stuy	(Marie) Walter E		H.L. Stinson organization	658165		21	-
Earl		Krepling	Earl Carl A.	658375		29	-
Earl		Roy D.	Earl, Myrna	659266	May	17	-
East Side Credit Bureau Inc. etal			Hittel Nicholas P.	659524		20	-
Echus		Walter	Echus Dorothy	659728		25	-
East Side Glass & Paint Co. etal			Equitable Sav & Loan Assoc	659739		25	-
Eagle Metals Co.	GARN. DEFDT.		Cole Collection Co.	630358		27	-
East Side Glass & Paint Co etal			Equitable Sav & Loan Assoc.	659899		27	-
Eaton	Paulette	H.	Eaton Alan E.	659955		31	-
Eatonman stuy		Reed W	Ruthkamp Laurene E.	660530	Jun	9	-
Eastside Marine Inc.			Chasi Philip	660839		15	-
Eagle Rainier Dist # 2795			Blacinsand & Travel Co	661238		22	-
Eagle Rainier Dist # 2795			Eaton Leasing Co.	661231		22	-
Eaton, stuy		Walter E.	King County Credit men Inc.	661508	July	28	-
Eastside Savings & Loan Assoc. (Kullbom Bldg)	GARN. DEFDT.		Anderson Thomas C. d/b/a	661721	July	1	-
Eaton, et al, d/b/a Gilbert			Solberg Clifford d/b/a	661792		5	-
Eastside Sav. & Loan Assoc.	GARN. DEFDT.		Spur Street Electric Co., Inc.	661877		6	-
Earby, et al	(Sally) William L.		Trusty New York Sav. Bank	662304		13	-
Eaton, et al	Walter E.		Northwest Casket Adj. Co.	662405		18	-
Earby			Earling Bernard W.	662498		19	-
Earby	Eolma		Meister Roy E.	662616		20	-
Eastside Electric Co, etal			Mitchell A. J. Inc.	662726		22	-
Eastgate Builders, etal		GARN. DEFDT.	Handy Carolyn	658804		27	-
Eagle Insurance Co, etal			Anderson Paul	663207	Aug	1	-
Earlandson, etal		Wayne E.	Household Finance Corp.	663422		3	-
Eaton, stuy (Donna)	GARN. DEFDT.		G.W. Bense	663818		11	-
Eagle Metals Co.		Leonard P.	Eagle, Jean	664578		24	-
Eagle			Pittsburgh Plate Glass	664889		30	-
Earley Construction Co etal			M.H.S., Inc	665051	Sept	2	-
Eagle Terminal Trades Inc. etuo			Wash. Credit men Inc.	657699		7	-
Eastside Concrete Products Inc.	GARN. DEFDT.		Larsell John S.	665731		15	-
Earby, et al	(Margaret) etal		Soudas Paint & Furnish Co.	666063		21	-
Earby Construction Co etal			Union Fed Sav & Loan Assoc.	666580		27	-
Eastside & Plasterboard Co., etal			Wash. State	666814	Oct	5	-
Eastgate Sewer Dist., etal		Walter	Earrett Dorothy	667119		10	-
Eaton, stuy etuo			Stetson Ross Machine Co. Inc	667314		13	-
Eagle Lake Timber Co.							

over

# GENERAL INDEX - DEFENDANT - SUPERIOR COURT, KING COUNTY, WASH.

DEFENDANT	GIVEN NAME	PLAINTIFF	NUMBER OF CAUSE	DATE OF FILING		
				Month	Day	Year
<i>Ealy</i>	<i>Alvin</i>	<i>M. Ealy, Malvern C.</i>	<i>667380</i>	<i>Oct</i>	<i>14</i>	<i>1966</i>
<i>Castle, admors</i>	<i>James</i>	<i>18. Atlantic Richfield Co.</i>	<i>667627</i>	<i>19</i>	<i>-</i>	<i>-</i>
<i>East Side Glass and Paint Co.</i>	<i>etal</i>	<i>Equitable Savings</i>	<i>667601</i>	<i>19</i>	<i>-</i>	<i>-</i>
"	"	"	<i>667602</i>	<i>19</i>	<i>-</i>	<i>-</i>
"	"	"	<i>667603</i>	<i>19</i>	<i>-</i>	<i>-</i>
"	"	"	<i>667604</i>	<i>19</i>	<i>-</i>	<i>-</i>
"	"	"	<i>667605</i>	<i>19</i>	<i>-</i>	<i>-</i>
"	"	"	<i>667606</i>	<i>19</i>	<i>-</i>	<i>-</i>
"	"	"	<i>667607</i>	<i>19</i>	<i>-</i>	<i>-</i>
"	"	"	<i>667608</i>	<i>19</i>	<i>-</i>	<i>-</i>
"	"	"	<i>667609</i>	<i>19</i>	<i>-</i>	<i>-</i>
"	"	"	<i>667610</i>	<i>19</i>	<i>-</i>	<i>-</i>
"	"	"	<i>667611</i>	<i>19</i>	<i>-</i>	<i>-</i>
"	"	"	<i>667612</i>	<i>19</i>	<i>-</i>	<i>-</i>
"	"	"	<i>667613</i>	<i>19</i>	<i>-</i>	<i>-</i>
"	"	"	<i>667614</i>	<i>19</i>	<i>-</i>	<i>-</i>
"	"	"	<i>667615</i>	<i>19</i>	<i>-</i>	<i>-</i>
"	"	"	<i>667616</i>	<i>19</i>	<i>-</i>	<i>-</i>
"	"	"	<i>667617</i>	<i>19</i>	<i>-</i>	<i>-</i>
"	"	"	<i>667618</i>	<i>19</i>	<i>-</i>	<i>-</i>
"	"	"	<i>667619</i>	<i>19</i>	<i>-</i>	<i>-</i>
"	"	"	<i>667620</i>	<i>19</i>	<i>-</i>	<i>-</i>
"	"	"	<i>667621</i>	<i>19</i>	<i>-</i>	<i>-</i>
"	"	"	<i>667622</i>	<i>19</i>	<i>-</i>	<i>-</i>
<i>Eatonville State Bank,</i>		<i>GARN. DEFDT. Commercial Service Co. Inc.</i>	<i>668389</i>	<i>18</i>	<i>-</i>	<i>-</i>
<i>Eastham, by etal (Betty)</i>	<i>James</i>	<i>E. Commercial Service Co. Inc.</i>	<i>668132</i>	<i>18</i>	<i>1</i>	<i>1967</i>
<i>Eastgate Sewer District etal</i>		<i>Wash. State of</i>	<i>668557</i>	<i>Nov</i>	<i>4</i>	<i>-</i>
<i>Eastside Sav. &amp; Loan Assoc. et al</i>		"	<i>668557</i>	<i>-</i>	<i>4</i>	<i>-</i>
<i>Eaton</i>		<i>Randall Eaton, Connie L.</i>	<i>668797</i>	<i>9</i>	<i>-</i>	<i>-</i>
<i>Eaton Inc. Co. etal</i>		<i>Marsson, Lois</i>	<i>668933</i>	<i>14</i>	<i>-</i>	<i>-</i>
<i>Eaton</i>	<i>Mark</i>	<i>D. Eastman, Peggy L.</i>	<i>669131</i>	<i>14</i>	<i>-</i>	<i>-</i>
<i>Eagle et al</i>	<i>Carl</i>	<i>Eaton, Dennis C.</i>	<i>669439</i>	<i>22</i>	<i>-</i>	<i>-</i>
<i>East Pacific Co. of Denmark, et al</i>		<i>Pigg, Ronnie P.</i>	<i>669708</i>	<i>18</i>	<i>1</i>	<i>1967</i>
<i>Eastport Homes Inc. etal</i>		<i>Chambers, William H.</i>	<i>670157</i>	<i>Dec</i>	<i>5</i>	<i>-</i>
<i>Eaton</i>	<i>Lynn</i>	<i>J. Carlo, Sandra K.</i>	<i>670214</i>	<i>6</i>	<i>-</i>	<i>-</i>
<i>Eagle</i>	<i>Carl</i>	<i>C. Chartrand, Daniel et al</i>	<i>670427</i>	<i>8</i>	<i>-</i>	<i>-</i>
<i>Eaton et al (Doris)</i>		<i>R. Lytle Supper Club, Inc</i>	<i>670981</i>	<i>20</i>	<i>-</i>	<i>-</i>
<i>East Pacific Co. of Denmark, et al</i>		<i>Nean, Charles E.</i>	<i>670991</i>	<i>20</i>	<i>-</i>	<i>-</i>
<i>Eacrell, et al (advt et al)</i>	<i>William</i>	<i>Eacrell, Dorothy</i>	<i>671120</i>	<i>22</i>	<i>-</i>	<i>-</i>
<i>Eastway Bank - Pontiac Co. et al</i>		<i>Hiehl, Norman W.</i>	<i>671319</i>	<i>29</i>	<i>-</i>	<i>-</i>
<i>Eacrell et al (Sandra)</i>	<i>William</i>	<i>Eacrell, Dorothy</i>	<i>671397</i>	<i>22</i>	<i>-</i>	<i>-</i>
<i>East End Motors et al</i>		<i>Ligden Investment Corp</i>	<i>671832</i>	<i>Jan</i>	<i>9</i>	<i>1967</i>
<i>Eastside Disposal Co. Inc.</i>		<i>Smith, Norman</i>	<i>672423</i>	<i>18</i>	<i>-</i>	<i>-</i>
<i>Eagle</i>	<i>Richard</i>	<i>L. Eagle, Helen M.</i>	<i>672745</i>	<i>24</i>	<i>-</i>	<i>-</i>
<i>Eagle Beverage</i>		<i>GARN. DEFDT. Myers, Carol A.</i>	<i>673108</i>	<i>24</i>	<i>-</i>	<i>-</i>
<i>Eagle et al</i>	<i>Lynn (Sandra) J</i>	<i>Spokane Valley McLean Co.</i>	<i>673085</i>	<i>30</i>	<i>-</i>	<i>-</i>
<i>Eastday, et al et al</i>	<i>Shorn</i>	<i>M. J. Stanley Co.</i>	<i>673120</i>	<i>30</i>	<i>-</i>	<i>-</i>
<i>Eastside Rental &amp; Equipment et al</i>		<i>Schardt, George</i>	<i>673223</i>	<i>Feb</i>	<i>1</i>	<i>1967</i>
<i>Easterling,</i>	<i>James</i>	<i>C. Easterling, Julian V.</i>	<i>673425</i>	<i>3</i>	<i>-</i>	<i>-</i>
<i>Eaton</i>	<i>Richard E.</i>	<i>Eaton, Anne L.</i>	<i>673912</i>	<i>14</i>	<i>-</i>	<i>-</i>

# GENERAL INDEX - DEFENDANT - SUPERIOR COURT, KING COUNTY, WASH.

DEFENDANT	GIVEN NAME		PLAINTIFF	NUMBER OF CAUSE	DATE OF FILING		
	ABCD EFGH	I J KLMNOPQRSTUVWXYZ			Month	Day	Year
Barton		Paulette N.	Barton, Alan E.	673915	2nd	14	1967
Carls		Wayman W.	Carls, Mary J.	674016	-	15	-
Carly wine, by Clifford		(Valma) S.	Seattle Trust Co.	674095	-	16	-
Eastside Glass		Paint Co. et al	D.E. Anderson Co	674143	-	16	-
Eastside Savings & Loan Assn. (Intervention)		Margoum H.	Northwest Carpet Sales Inc.	670510	-	17	-
Eastwood			Eastwood Roy	674669	-	28	-
Eastside Sav & Loan Assn. (Intervention)		Donald (Jimmy) (add'l def't)	Northwest Carpet Sales Inc.	670510	7th	1	-
Eastwood, by		Ralph E.	Eastwood, Elva T.	632797	-	7	-
Eastwood, by		Lynn	Eastwood, Elva T.	675253	-	13	-
Eastwood, by		William	Eastwood, Sandra K.	675606	-	16	-
Eastside Contracting Company et al		Donna	Donna, Owen M., et al, Don.	676011	-	23	-
Eastside Chevrolet Co., et al		Frank	Smith Brothers Heating Co	676203	-	27	-
Eastside Credit & Surety Ins. et al		Raymond	Wash. State of	676457	-	30	-
East		Garn. Defdt.	Wash. State of	676676	April	4	-
Eastside Pontiac Co		James	Seattle First National Bank	676894	-	10	-
Eastwood		Larry	East, Barbara	677034	-	10	-
Eastgate Auto Repair, et al		James	Commercial Service Co	669775	-	18	-
Earby, Douglas		L. Earl	Earby, Susan M.	677478	-	17	-
Earby, Douglas		L. Earl	Earby, Susan M.	677488	-	18	-
Earby, Douglas		L. Earl	Earby, Susan M.	677590	-	19	-
Earby, Douglas		L. Earl	Earby, Susan M.	678145	-	22	-
Eastwood		Harold	Eastwood, Elva T.	678344	July	2	-
Easton, et al		James	Reyes, Luc	678876	-	10	-
Easton, et al		Lynn (Sandra) J.	Johansen, J. Art.	679205	-	16	-
Easton, et al		Lynn (Sandra) J.	Federal Finance Co. Inc.	679256	-	16	-
Easton, et al		John	Fox, Bernard, et al	679384	-	18	-
East et al via 4/19/62 Carl		Jean	Easton, Rose E.	679788	-	25	-
Eagle		Karalee	Carroll Mortgage Co	678934	-	26	-
Eagle		Emory	Everson, Jeff	680112	Jan	2	-
East et al		Walter	State of Washington	680651	-	12	-
East et al		Walter	State of Washington	680646	-	12	-
Earls		Lynn	Great Bureau of Surety - Kent Inc	681159	-	20	-
Earls		Michael	Great Bureau of Surety - Kent Inc	681160	-	20	-
Earl Meyer Co.		Garn. Defdt.	Earls, Sandra K.	681493	-	26	-
Earl et al		Lynn	Anderson, Jack W.	681779	-	29	-
Earle		Garn. Defdt.	Capital Finance Co.	682163	June	10	-
Eagle Metal Co. Corp		Richard H.	King County	682400	July	12	-
Earling, et al (Roxie)		Richard H.	Earls, Sandra K.	682935	-	20	-
Eagle Insurance Co, et al		W.	Northwest Credit	667443	-	27	-
Easton, et al		W.	Wash. Heights Federal Savings & Loan Assn.	684512	Aug	16	-
Eastgate Construction Inc. et al		W.	National Bank of Commerce of Seattle	685167	-	28	-
Eastlund		W.	Gorman, Howard et al	685256	-	29	-
Easton, et al		W.	H.T. Steiner Corp Inc	685620	Sept	6	-
Earls, et al et al		W.	Eastlund, Dorothy Lee	686397	-	18	-
Eastman		W.	Kelley, Duane A.	686798	-	35	-
Easton, et al		W.	Hynes, Christi Ann	686938	-	26	-
Eastwood		W.	Eastman, Lois	687385	Oct	4	-
Easton, et al via et al (Hazel) Janette		W.	Gorman, Howard et al	688256	-	9	-
		Samuel C.	Eastwood, Shirley G.	688368	-	11	-
			New York Life Insurance Co.	688742	-	25	-

# GENERAL INDEX - DEFENDANT - SUPERIOR COURT, KING COUNTY, WASH.

DEFENDANT	GIVEN NAME A B C D E F G H I J K L M N O P Q R S T U V W X Y Z	PLAINTIFF	NUMBER OF CAUSE	DATE OF FILING		
				Month	Day	Year
<b>Ea</b>						
Eastside Savings Loan Assoc et al		State of Washington	688881	Oct	27	1927
Eagen, et al	Agnes	L. Mac Sand, Inc. et al	690064	Nov	16	-
Eastwood	Ethel	Eastwood, Jack L.	691052	Dec	5	-
Ealy, et al		A. W. Sedden, Oregon W. et al	691410	-	11	-
Eagle Construction Corporation		GARN. DEFT. Ristvedt, Hazel	686798	-	18	-
Eastman	John	Eastman, Virginia M.	691827	-	18	-
Eagle Insurance Co. of New Jersey		RN DEFT. Lante, Robert E. et al	661657	-	19	-
Ease	James	L. Hess, Beatrice W.	692024	-	21	-
Carlina	Elna	Wallace, Edgar	692485	Jan	4	1928
Eagle, et al		Wade, Ralph et al	692535	-	5	-
Carlisle Marine, Inc		Lawrence, A. E.	692544	-	8	-
Eastside Rent + Lease Co. et al		Saltwater Co. Inc.	692704	-	11	-
Easton et al		Associated Loan Co.	692955	-	22	-
and Easton, et al	Esmer	Easton, Robert et al	693605	Feb	9	-
Carvington Associates, et al		Indivont Construction, Inc.	693612	-	9	-
Carl, et al, et al	Jasper	B. Young, Lester E.	693641	-	13	-
Eastman et al		Theodore	694090	-	27	-
Carvington Associates		GARN. DEFT. Queen City Flour Co. Inc.	694693	Mar	15	-
Eastgate Sewer District, et al		Sniffen, Ben et al et al	694921	-	22	-
Carlisle Distributing Co. Inc. et al		McNicol, Howard C.	695091	-	27	-
Eastgate Realty, Inc.		GARN. DEFT. Commercial Service Co. Inc.	682038	-	27	-
Eastway Truck - Storage Co.		Brown, Ida et al	695362	Apr	4	-
Easton et al	Barbara	Garn. DEFT. Cole Collection Co. Inc.	695544	-	10	-
Carvington Associates		Depot Mechanical Inc.	695173	-	25	-
Caton, et al	Oliver	Lincoln Finance Co. Inc. et al	696402	May	7	-
Caton, et al	Lloyd	"	696402	-	7	-
Caton, et al	Walter	"	696402	-	7	-
Carlisle Rent + Lease Co. et al		GARN. DEFT. Equitable Life Assurance Society of the U.S.	696677	-	15	-
Eagle Lumber Co. of New York		Wells, James L.	629901	-	17	-
East Asiatic Company,		Central National Corp.	696854	-	20	-
Carl, et al	Joseph	B. Steves, Clara	697070	-	28	-
Caromont Corporation		GARN. DEFT. Cole Corporation et al	630851	-	28	-
Cason, et al, et al	Harry (Ethel)	Donald Sewer District	697084	-	28	-
Easton et al	David	Olson, Virgil et al	697238	Jun	4	-
Eastside Credit Union Inc. et al		Sattle Sublet Savings Loan Assoc.	697634	-	14	-
Easton, et al	James	Speyer, John et al	697706	-	18	-
Caslin, et al	(Maurine) Kenneth	B. Forbes, James S. G., et al	697934	-	25	-
Eastside Glass + Mount Co. et al		Security Savings + Loan Assoc.	698009	-	27	-
Carle	Mary	Taylor, Howard M.	698442	Jul	1	-
Eastern Star Nursing Home, et al		GARN. DEFT. King County Credit Men Inc.	697709	-	2	-
Ealy, et al	(Wortha)	Sammie	698260	-	8	-
Eastside Savings + Loan Assoc. et al		State of Wash, Dept of Labor - Industries	698316	-	7	-
Eager et al		Robert	698614	-	18	-
Easton et al	Gilbert	E. C M A Corporation	696910	-	26	-
Eagle Star Insurance Co. et al		Robertson, Dean A.	699609	-	30	-
Easton, et al	Gilbert (Eleanor)	E. Cole Collection Co. Inc.	699393	Aug	9	-
Eagle Lodge #1722 of Denton		Kelsey, Joe Sr et al	699394	-	9	-
Cartham, et al	(Lynn) Verma J	State of Washington	699764	-	21	-
Eastgate Sewer District		George W. Slater Co.	699862	-	23	-



# GENERAL INDEX - DEFENDANT - SUPERIOR COURT, KING COUNTY, WASH.

DEFENDANT	GIVEN NAME	PLAINTIFF	NUMBER OF CAUSE	DATE OF FILING
ALB C D E F G H I J K L M N O P Q R S T U V W X Y Z	1 2 3 4 5 6 7 8 9 10 11 12			Month Day Year
<b>Ea</b>				
Easton, et al		Walt		
Eastside Spray Co.		GARN. DEFT.	700133	Sep 3 1968
East Hill Masonry, et al			625175	- 6 -
Easton, et al		Walter	700463	- 12 -
Eastside Savings & Loan Assoc., et al			700592	- 17 -
Eastside Savings & Loan Assoc. et al			100800	- 23 -
Eastside Savings & Loan Assoc. et al			701075	- 27 -
Eastlake Realty Co, et al			701162	Oct 1 -
Eaton, et al	Deraldine	Mc Lee, Shirley M. et al	701396	- 8 -
Eaton, et al	(Margaret) Robert F.	Waring, Lella L. et al	701972	- 24 -
Eastholm Dry et al	Glenn	Lucky Stone Inc	701999	- 24 -
Eastway Used Cars		Wood, John W. Jr.	702492	Nov 8 -
East Oakland Auto Auction, Inc, et al		GARN. DEFT.	703012	- 25 -
Eastside Builders, et al		Behm, Raymond E. et al	691322	Dec 9 -
Earp, trustee, et al	Joseph	Sunset Glass Co. Inc.	704071	Jan 3 1969
Eaton, et al	John	O. Transport Equipment Co.	704258	- 8 -
Eaton, et al	C.	Patterson, Dice	704618	- 20 -
Eagle Construction Corp.		GARN. DEFT.	705222	Feb 6 -
Eagle Terminal Tankers, Inc, et al		Aluminum Co. of America	703865	- 11 -
Eastside Realty, Inc, et al		Merchants Credit Corp et al	701567	- 11 -
Earling, et al	Budd (Barbara)	Maxwell, Mickey D.	705848	- 25 -
Eastside Glass & Paint Co. et al		Wright, Thomas M. et al	705889	- 26 -
Earlington Boat Course et al		W. Cardenas, Basilio	706075	Mar 3 -
Eastside Savings & Loan Assoc. et al		Fidelity Mutual Savings Bank	706426	- 12 -
Eastwood, et al	(Casslyn) Roy	Forman Sales Co.	716513	- 13 -
East, et al	Willie A.	Spirit, Donald W.	706898	- 24 -
Eaton, et al	Lawrence (Whitely)	Living, S. H.	708702	- 24 -
Eagle Insurance Co. et al		RECEIVERSHIP	707480	Apr 8 -
Eastgate Realty, Inc.		Continental of Seattle, Inc.	708528	May 5 -
Eastgate Mobile Manor		Albright, Lester C. et al	708614	- 6 -
Earhart, et al	Mike	Mirage Equipment Co.	708906	- 14 -
Eastside Realty, Inc. et al		N. A. Turner Organization Inc.	709017	- 16 -
Eastway Truck & Camper Co. Inc.		Warkent, William et al	709198	- 22 -
Eastside Glass & Paint Co. et al		GARN. DEFT.	696356	- 22 -
Eastside Glass & Paint Co. et al		Burner Motors, Inc.	709481	- 27 -
Eastgate Realty, Inc.		Securities - Determinants, Inc.	709480	- 27 -
Eaton, et al	Glenn	" " "	709660	June 5 -
Eastside Glass & Paint Co. et al		Art Mc Cann & Sons Inc.	709741	- 6 -
Eaton	Bruce	Mussel, Jack	710186	- 18 -
Ede, et al	Kubert	Fidelity Mutual Savings Plan	710256	- 23 -
Eastside Marine, Inc. et al		GARN. DEFT.	695328	- 27 -
Eaton et al (Betty)	Tabuck	Horton, Jack et al	710632	- 30 -
Eastgate Aero Inc. et al		F. S. Atkinson, Corp	710767	July 3 -
East Hill Masonry		GARN. DEFT.	710790	- 3 -
Earlwood, et al Clifford (Victoria)		Standinger, Joyce	704369	- 2 -
Eastside Marine, Inc.		GARN. DEFT.	710895	- 8 -
Eagle Electric & Plumbing Supply Co.		L. Union Fed Savings & Loan Assoc.	710632	- 15 -
Earlwood, et al Clifford		F. J. Slinson Corp.	711289	- 17 -
Eagle Insurance Co. et al		GARN. DEFT.	711346	- 1 -
		Zukunaga, Larry K.	711840	Aug 1 -
		St. Pierre, Harry et al		
		Cardis Savings Service Inc		

# GENERAL INDEX - DEFENDANT - SUPERIOR COURT, KING COUNTY, WASH.

DEFENDANT	GIVEN NAME	PLAINTIFF	NUMBER OF CAUSE	DATE OF FILING		
				Month	Day	Year
<b>Eu</b> <i>Eu</i>		<i>Elliott, Margie J</i>	712119	Aug	8	69
<i>Eastside Builders et al</i>		<i>State of Wash Employment Security Dept</i>	712551	-	20	-
<i>Eastside Farming Loan Assoc et al</i>		<i>King County</i>	712644	-	21	-
<i>Eastgate Realty Inc</i>		<i>Neal Club of Eastside, Inc</i>	712677	-	22	-
<i>Eastside Builders et al</i>		<i>McKinstry Co</i>	713020	Sept	2	-
<i>Eastside Builders et al</i>		<i>Knecht, W &amp; R</i>	713117	-	4	-
<i>East</i>	<i>Irwin</i>	<i>R. Foreway Finance - Liability</i>	713189	-	5	-
<i>Eastly et al</i>	<i>William</i>	<i>Geo. Johnson</i>	713275	-	9	-
<i>Easting Assoc</i>	<i>Richard</i>	<i>2 Seattle Seaport Club Inc</i>	713274	-	9	-
<i>Eagles et al</i>	<i>Edith</i>	<i>The Lord, Mrs. Lightenwick Church Inc</i>	713342	-	10	-
<i>Eastside Imperial Co, Inc et al</i>		<i>Hutchens, Jean M</i>	713820	-	23	-
<i>Eastgate Realty Co</i>		<i>Lakeland Electric Inc</i>	713837	-	23	-
<i>Eastside Paint Glass &amp; et al</i>		<i>Wendler Carpet Service Inc</i>	714562	Oct	10	-
<i>Eastside Home Prod Co, Inc</i>		<i>Washington Credit, Inc</i>	714413	-	15	-
<i>Eastland et al</i>	<i>Herthy</i>	<i>Spartan, W. H. Co.</i>	715234	-	29	-
<i>East Hill Associates et al</i>		<i>Wisher Construction Co</i>	715878	Nov	14	-
<i>East Hill &amp; Sons Construction et al</i>		<i>Western Commercial Equipment Inc</i>	706020	-	18	-
<i>Eastside Glass Paint Co et al</i>		<i>Continental, Inc</i>	716714	Dec	8	-
<i>Eastside Builders, Inc et al</i>		<i>Winnat Tole Co.</i>	716894	-	11	-
<i>Eastside Builders, Inc et al</i>		<i>do</i>	716885	-	12	-
<i>Eastside Office Equipment et al</i>		<i>Vol. et al Equipment Co</i>	716888	-	11	-
<i>East Seattle Realty et al</i>		<i>Tyebek, Keith D et al</i>	716968	-	15	-
<i>East Weyand Garage House et al</i>		<i>Empire National Bank</i>	716988	-	15	-
<i>Eastside Drapery Inc</i>		<i>King Co Credit Men Inc</i>	715774	-	19	-
<i>Eastside Builders</i>		<i>R. B. C. Electric Co Inc</i>	717179	-	18	-
<i>Eastly, et al et al</i>	<i>Kenneth</i>	<i>Chandler &amp; Son Inc</i>	717220	-	19	-
<i>Eastman et al</i>	<i>Beed</i>	<i>General, 1770 Tom Cap.</i>	717310	-	24	-
<i>Eastside Builders, et al et al</i>		<i>State of Wash, Dept of Revenue</i>	717560	Jan	2	1970
<i>East et al</i>		<i>Guardian Life Insurance Co of America</i>	717549	-	5	-
<i>East Inc Dorothy</i>	<i>(Wend)</i>	<i>Superfunky, Joseph D et al</i>	706902	-	8	-
<i>Eastwood et al</i>	<i>Walter</i>	<i>Speed Bureau of Auburn Wash</i>	717869	-	14	-
<i>Eastside Builders et al</i>		<i>Keid Sand &amp; Gravel Inc</i>	718010	-	14	-
<i>East et al</i>	<i>(Mary)</i>	<i>Pacific Testing Laboratories Inc</i>	718049	-	10	-
<i>East West Import &amp; Sales Co et al</i>		<i>Wittiger, Jerome</i>	718287	-	21	-
<i>East et al</i>		<i>Schneider, Lyle E et al et al</i>	718326	-	22	-
<i>* Eastwood et al (Wend)</i>		<i>Board, Arlo B et al</i>	718350	-	22	-
<i>East</i>	<i>(Wend) Beada</i>	<i>Pice, Hon. K. et al</i>	718577	-	28	-
<i>Eastside Rehabilitation League</i>		<i>Frank, Cornelius</i>	719066	Feb	10	-
<i>Eastside Hardware Supply</i>		<i>Roberts, James W</i>	719088	-	10	-
<i>Eastside Credit Bureau, Inc et al</i>		<i>Union Home Savings Bank</i>	719336	-	16	-
<i>Eastgate Realty Co et al</i>		<i>King Co. Water Dept #90</i>	719147	-	24	-
<i>East et al</i>	<i>(Helen)</i>	<i>Washington Credit Inc</i>	719750	-	25	-
<i>Eastgate Center Assoc.</i>	<i>Steven</i>	<i>Washington Mutual Savings Bank</i>	719846	-	27	-
<i>Eastside Resposal Co, Inc</i>		<i>Washington Credit Inc</i>	719303	-	26	-
<i>Eastgate Service Wier</i>		<i>McCombs, Lammie E et al</i>	719558	Mar	19	-
<i>Eastside Landscaping</i>	<i>Wend</i>	<i>Copeland Landscaping Service</i>	720609	-	17	-
<i>East et al</i>	<i>Richard</i>	<i>Emly, Merrill B.</i>	720680	-	17	-
<i>Easting Motors et al</i>		<i>Washington Credit Inc</i>	617724	-	18	-
<i>East Hill Assoc. et al</i>		<i>Seaport Int'l Co.</i>	721197	-	27	-
<i>Eagle Terminal Tanker Inc</i>		<i>Redmond, Doran L.</i>	714294	Apr	2	-

# DEFENDANT

GENERAL INDEX -

SUPERIOR COURT, KING COUNTY, WASH

DEF.	GIVEN NAME	RECEIVERSHIP	NUMBER OF CAUSE	DATE OF FILING		
				Month	Day	Year
<b>Ea</b>						
Earlywine, et al	Eurostat		72149	April	7	1928
Earnheart	Leola Rommel		721909	-	14	-
Eastside Savings & Loan Assoc. - inc			722211	-	27	-
Eastside Builders			722663	-	20	-
Eagle Terminal Tankers, Inc.			72326	May	14	-
Eastside Savings & Loan Assoc. - inc			723787	May	27	-
Eastside Asphalt Co.			723832	-	25	-
Eaton Co. Inc. Charles			724604	June	16	-
Eastside Mortgage & Escrow, Inc.			724682	-	17	-
Eastside Savings & Loan Assoc. - inc			725011	-	24	-
Eager, et al	Robert L.		725213	-	26	-
Eastside Savings & Loan Assoc. - inc			725551	July	1	1920
Eastman, et al. Albert	William		726347	-	27	-
Eastside Savings & Loan Assoc. - inc			726347	-	27	-
Eaton, et al	Neal (Warrett) D		726712	Aug	5	-
Easterlin, et al	Steve		726818	-	7	-
Earlmount Corporation			726866	-	10	-
Economic Issue	Robert L.		726871	-	10	-
East Hill Homes, et al			727204	-	19	-
Eastside Glass & Paint Co. - et al			727305	-	21	-
Earing, et al	Robert G		727321	-	21	-
Cable	Delmer (Celmer)		727356	-	24	-
East Hill Homes, Inc. et al			727806	Sept	3	-
Eastside Glass & Paint Co.			728145	-	14	-
Eastside Mortgage & Escrow, Inc.			7284134	-	21	-
Eastgate Lanes, Inc. et al		RECEIVERSHIP	728745	-	29	-
Eagle Club		RECEIVERSHIP	72924	Oct	13	-
Eastgate Apartments, Inc. et al		RECEIVERSHIP	729374	-	14	-
Eastgate Lanes, Inc. et al			729376	-	14	-
Eagle Bay	Frank		729423	-	18	-
Eastgate, et al	(Virginia) L.		729471	-	16	-
Two Hill Homeowner's Inc. et al			729470	-	16	-
Eastside Realty, Inc. et al			729549	-	20	-
Gams	Frederick		729549	-	20	-
Eastside Brokers Association, Inc. et al			729542	-	20	-
East Hill Improvement Assoc. - inc			729762	-	23	-
Eastgate Investment Corp. - inc			730305	Nov	6	-
Eastside Rental & Equipment Co. Inc. - inc			730958	-	17	-
Eastside Glass & Paint Co.			730913	-	20	-
Eastside Glass & Paint Co.			730914	-	20	-
Eastside Glass & Paint Co.			730915	-	20	-
Eastside Glass & Paint Co. et al			731077	-	25	-
Eastside Rental & Equipment - et al			729449	Dec	11	-
Easter, et al			731407	-	4	-
East Hill Homes, Inc. et al			731473	-	4	-
Eastgate Secure District - inc			731473	-	4	-
Eagle, et al	Frank		731610	-	9	-
Earlywine, et al	Clifford		732005	-	18	-
Eastgate Sewer Dist. - inc			732391	-	20	-
			STATE OF WASHINGTON			

DEFENDANT

GENERAL INDEX - [REDACTED] - SUPERIOR COURT, KING COUNTY, WASH.

LIST

[REDACTED]

GIVEN NAME  
ABCD EFGH IJ KLMNO PQRSTUWXYZ

Plaintiff [REDACTED]

NUMBER OF CAUSE

DATE OF FILING  
Month Day Year

E2

# GENERAL INDEX - DEFENDANT - SUPERIOR COURT, KING COUNTY, WASH.

DEFENDANT	GIVEN NAME		PLAINTIFF	NUMBER OF CAUSE	DATE OF FILING		
	ABCDEFGHIJ	KLMNOPQRSTUVWXYZ			Month	Day	Year
<b>Eb-Ec</b>							
Ebinger		Roland A.	Ebinger, Sandra A.	652974	Jan	20	1966
Eby, et ux	Daniel		Storath, Enid, et ux	653562	Feb	1	
Economy Finance Co et al			Wash. Heights Fed Sav + Loan Assoc.	656514	Mar	28	
Economy Finance Co et al			Eggers, Frank H.	656672		30	
Eckert et al	(Chydre Vaux) (Elvise)	Wayne C.	Washington State of	656906	Apr	1	
Economy Finance Co et al			Union Fed Sav + Loan Assoc.	657543		15	
Economy Finance Co et al			Hughbanks, W. Strogala	657557		16	
Herling, et ux	George	R.	Basin Collection Bureau	658163		27	
Economy Financials et al			Picardo, Tony	658906	May	10	
Esco Industries Inc.			Johnson, Thomas L et ux et al	659245		17	
Eckerman		Ronald	Hare, Richard J.	660903	Jun	16	
Economy Const. Co.		GARN. DEFOT.	Petit, Veroy D.	646264		21	
Economy Const. Co.		GARN. DEFOT.	Morco, John J.	654028		28	
Eclipse One et al.			Highlight Savings + Loan Assoc.	661936	July	7	
Economic Ins. Co. Ltd. et al			Pacific Sound Tug + Barge Co., et al	662586		20	
" " " " " " " "			" " " " " " " "	662705		21	
Ecklin, et ux	Paul (Rose)	F.	A. D. Anderson Inc.	663522	Aug	5	
Eckhart, et ux, et al	(June) Keon		Wash. State of	663659		9	
Eck (Virginia)	William		Bayden, Jerry	664011		15	
Economy Finance Co. Inc. et al			Metropolitan Life Ins. Co.	664022		18	
Economy Finance Co Inc et al			Smith, Shore Federal Savings + Loan	664888		29	
Eck, et ux	Lloyd		Esco, Inc.	666016	Sept	21	
Ecklund	Richard		Ecklund, Candace	668755	Nov	9	
Economy Finance Co Inc et al			Union Fed Sav. + Loan Assoc.	669343		18	
Eck, et ux	(Grace) Lloyd		King County Credit Men, Inc.	669485		22	
Economy	Arthur	M.	Economy, Audrey K.	669761		29	
Eck, et ux, et al	Edward (Eric)	C.	King County	669961	Dec	1	
Eckberg	Arthur	H.	Eckberg, Vivian A.	670093		5	
Eckhoff	David	A.	Eckhoff, Kathi Anne	670344		7	
Eckmann	Leo	Z.	Eckmann, Irene J.	670403		8	
Economy Finance Co.			Sperkman & McLean	671404		30	
Eckman, et al		Ray	Orin Benjamin, et al	672174	Jan	13	1967
Eckhardt Account, Inc. et al			Torshoff, Eleanor	672474		19	
Economy Finance Co., et al			Reitz, David A., et al	672523		19	
Eck	Stuart	E.	Eck, Marie D.	672852		25	
Eckmann, et al		Ray	J. Sigry, Timothy	672958		26	
Eckert, et ux, et al	John	M.	Sulzenger, John A.	673250	Feb	1	
Eckelbarger, et al (Madys)			Wash., State of	673634		8	
Eckelbarger, et al (Darlene)		Stanley	" " "	673634		8	
Eckelbarger, et al (Joanna)		Wylie	" " "	673634		8	
Eckelbarger - Keeler Co., et al			" " "	673634		8	
Echo Construction Inc., et al			Vic-Ray Inc	673676		9	
Echo Construction Inc., et al			Vic-Ray Inc	673677		9	
Echo Construction Inc., et al			Vic-Ray Inc	673678		9	
Echo Construction Inc., et al			United States Plywood Corp	674373		21	
Economy Finance Co. Inc.			Melker, Victor V., et ux	674905	Mar	3	
Economy Finance Co. Inc., et al			South Shore Federal Savings + Loan Assoc	675082		7	
Eckand, et ux	Patricia	J.	Continental of Pro King Inc	676352		27	
Economic Ins. Co. Ltd. et al			King, Clarence A., et ux	676976	April	7	

# GENERAL INDEX - DEFENDANT - SUPERIOR COURT, KING COUNTY, WASH.

DEFENDANT	GIVEN NAME		PLAINTIFF	NUMBER OF CAUSE	DATE OF FILING		
	ABCD EFGH	I J KLMNOP QRSTUVWXYZ SECOND INITIAL			Month	Day	Year
<b>Eb-Ec</b>							
Eblin		Paul	Eblin, Ronald	677657	April	19	1962
Economy Auto Supply Inc, et al			Tracy, Steven	678682	May	8	-
Eckbarger		Robert C	Eckbarger, Bebe D.	679882	-	26	-
Ebeling		Raymond J	Ebeling, Eric Ann	681127	June	19	-
Eckhoff, et al		William C	Commerce, Service Co Inc	682035	July	6	-
Eby		William B	Nanta Gars County Welfare Dept	682761	-	18	-
Echo Inc, et al			Villar, Victor O. et al	683985	-	31	-
Echo Construction Co			Church, Shana D.	649378	Aug	15	-
Eckternkamp		Thord	Eckternkamp, Nancy L.	685253	-	28	-
Eberhardt		Allen	Eberhardt, Jean E.	685397	-	30	-
Eckmann, et al		Ray	Edwards, Norris et al et al	685818	Sept	8	-
Eckmann		Patricia	Eckmann, Robert R.	686216	-	14	-
Eckoff		Kathi	Eckoff, Daniel A.	686251	-	15	-
Ecklund, et al		Grant	Credit Bureau of Auburn Kent Inc.	686882	-	26	-
Ecklund, et al		Grant	Credit Bureau of Auburn Kent Inc.	686883	-	26	-
Ecklund, et al		Grant	Credit Bureau of Auburn Kent Inc.	686884	-	26	-
Eber, et al		Charlie	Fujioka, Victor J. et al	687693	Oct	9	-
Economy Finance Co Inc, et al			National Bank of Westchester	688144	-	16	-
Eckle, et al, et al		May	Amman, Don E. et al, et al	690214	Nov	20	-
Eckman		Ronald	Eckhart, Janice C.	691512	Dec	12	-
Ecklund, et al		Grant	Credit Bureau of Auburn - Kent Inc	691852	-	19	-
Ecklund, et al		Grant	De Cordova, Kenneth E.	692039	-	21	-
Economy Finance Co, Inc et al			Olympic Mortgage Corp	692391	Jan	2	1968
Eckhardt - Saunt, inc. et al			Wells, Fred et al	692708	-	11	-
Eckhardt, et al		Frank	Hagney, Edward	694328	Mar	5	-
Eckles et al		Noble	Cady, Carol et al	695199	-	29	-
Eckman et al		Hilda	Hardwoods Inc.	695331	April	3	-
Eckert, et al		Non (Kathy)	Commercial Service Co Inc	696163	-	30	-
Economy Construction Co. Inc			Redford, George	696781	May	20	-
Economy Construction Co. Inc			Washington Credit Inc.	694702	Jun	12	-
Eckhardt - Saunt, Inc			Merley Construction Co Inc.	697708	-	16	-
Eck Construction Co. Inc et al		William	Seattle National Bank	697955	-	25	-
Economy Construction Co. Inc			Sevierite-Intermountain, Inc	698301	July	9	-
Ebert et al		William	Burrage, Corp	698428	-	12	-
Ebert, et al		Melvin	Commercial Service Co. Inc	698322	-	14	-
Eckelbarger - Keeler Co, et al			Century International Inc.	699259	Aug	6	-
Eby, et al, et al		Ray	Isaac, William et al	700071	-	30	-
Eby, et al		Lay	Hughes, Elizabeth, C.	668786	Sept	3	-
Economy Finance Co. Inc et al			Eastbrook, W. D.	687922	-	3	-
Eberle, et al, et al		Robert	Brewort Savings Bank of Brooklyn	700405	-	11	-
Economy Finance Co of Tacoma, Inc et al			Lombardo, Andrew et al	701358	Oct	8	-
Eckenweiler, et al et al		June	Scott, Wayne C. et al	701369	-	8	-
Eckenweiler Development Co, et al		R	Random House Interiors, Inc	701510	-	10	-
Eckles, et al, et al		E	Random House Interiors, Inc.	701510	-	10	-
Eberle, et al		Robert	Lewis, John G.	701809	-	21	-
Eberle, et al		Robert	Nicholson, Frank et al	702253	-	31	-
Eckert, et al, et al		William	Paulson, Clarence M. et al	702252	-	31	-
Economy Plumbing, Inc.			Schuler, Larry	703579	Nov	26	-
			Monitor Electric, Inc.	703088	-	26	-

# GENERAL INDEX - DEFENDANT - SUPERIOR COURT, KING COUNTY, WASH.

DEFENDANT	GIVEN NAME										PLAINTIFF	NUMBER OF CAUSE	DATE OF FILING						
	A	B	C	D	E	F	G	H	I	J			Month	Day	Year				
Ebbeson, Alvar	N										(John)				McHalt, James Alvar	703432	Dec	9	1968
Eckmann, Al															E. L. Corporation Alvar	703648	-	16	-
Eckert, Al											Ray				Reiche, Karl Alvar	701769	-	23	-
Eclipse Timber Co Inc											Hamilton				State of Wash, Dept of Labor & Industries	703469	-	30	-
Eberharter & Saunt, Inc.															GARN. DEFDT. Pacific Acceptance Corp	704279	Jan	8	1969
Eberharter, Saunt															GARN. DEFDT. Pacific Ventures Inc	704662	-	21	-
Eberharter & Saunt															GARN. DEFDT. Mission Supply Co.	704838	-	28	-
Eck, Alvar											Courtney				N. H. L. Steiner Corp Inc	705128	Feb	5	-
Eberharter & Saunt, Inc.															Drey, Franita A. Alvar	705230	-	7	-
Eckensweiler and d/b/a (June)											Richard				Random Kansas Indiv. Inc	705608	-	18	-
Earlington Golf Course et al															Wall Royal Inc	706105	Mar	4	-
Eckberg, Alvar											Ant				C. Mutual Credit Association Inc	707040	-	26	-
Eckert, Alvar											Burton				Western Collections Inc	708072	Apr	23	-
Ebel, Alvar											Vernon				Brewster, Ada May	707341	May	27	-
Economy Electric Co. et al															Allen, Walter La Verne	709583	June	3	-
Eckensweiler, Alvar d/b/a et al											A				C. Air Central Products of Seattle, Inc	710096	-	16	-
Eckensweiler Development Co, et al															" " " "	710046	-	18	-
Ecklund, Alvar et al											Larry				Southgate Realty Inc	710316	-	20	-
Eck, Alvar											Kenneth				A Kirk, Doug et al	710637	July	1	-
Eckert, Alvar											Kalvin				T Pacific Natl Bank of Seattle et al	711240	-	16	-
Eckman Alvar											Hilda				E. Washington Credit Inc.	712041	Aug	7	-
Eck, Alvar											Ben				W. H. L. Steiner Corp. Inc.	712464	-	13	-
Eckberg, Alvar et al											Howard (Elizabeth)				D Drey, Charles A.	712488	-	19	-
Eckensweiler, Alvar d/b/a											R.				E JTM Keeping Co.	713415	Sept	12	-
Eckmann, Alvar d/b/a											Rolfe				Lincoln Auto Salvage, Inc.	713431	-	12	-
Eckensweiler Alvar et al											R				E. City Heating & Sheet Metal Inc	713655	-	18	-
Eckensweiler Development Co. et al											Al				do	713655	-	18	-
Eckman et al											Larry				Washington for Pure Water Inc et al	713775	-	22	-
Eckman, et al											Ray				L. Manning, Nancy A	714329	Oct	6	-
Eckensweiler, Alvar											June				E. Chase, O. R. et al	714565	-	10	-
Eckmann, et al											Ray				X. Klaus, Donald	714573	-	10	-
Eckmann, et al											Ray				Callison, Cecil et al	715396	-	31	-
Eckert et al											(Earlene) Norman				a Phillips, C. J.	715777	Nov	12	-
Eclipse Timber Co															GARN. DEFDT. Northwest Census Adjustments	702851	-	12	-
Eckensweiler et al											Ronald J.				Roncom Inc et al	716027	-	18	-
Eckensweiler et al											Richard E				Delta Electric, Inc	716637	Dec	5	-
Economy Construction Co. et al															Elliott, Keith E et al	717074	-	16	-
Eberle, et al et al											Ronald J.				Venus Investment Co Inc	717311	-	23	-
Eck, et al											(Paul) John				W. Kowaloki, Paula J.	717577	Jan	2	1970
Eckert, et al											Norman				a Goodfellow Leasing, Inc	717914	-	13	-
Eckensweiler et al											(June)				E National Bank of Washington, Tacoma	718128	-	19	-
Eberle et al															M First Savings & Loan Assoc, Inc et al	718330	-	22	-
Eberle, et al et al											Ronald J.				Association Collectors Inc	718447	-	26	-
Cherk et al											Ronald J.				" "	718644	-	30	-
Eckensweiler et al et al											R				E Home Invitation Co Inc	719266	Feb	13	-
Eckensweiler Development Co et al											Ronald J.				do	719266	-	13	-
Eberle, et al et al															E. Cadators Services Inc.	719413	-	17	-
Edwards Automotive Service Inc.															Sigs Robby Inc.	719706	-	25	-
Eberharter & Saunt, et al											Alvar				Thom, Shelly L et al	718944	-	25	-
Ecklund et al											Alvar				City of Kent	714835	-	26	-

# GENERAL INDEX - DEFENDANT - SUPERIOR COURT, KING COUNTY, WASH.

DEFENDANT	GIVEN NAME	PLAINTIFF	NUMBER OF CAUSE	DATE of FILING		
				Month	Day	Year
Eberle, et al	Ronald J.	Association Collectors Co.	720413	Mar	12	1970
Economy Const. Co., Inc.		Allego Credit Co.	720512	-	10	-
Echo Construction Co. Inc.		Granystone Corp.	722492	April	28	-
Charles, and Colleen	Ronald J.	Westside Federal Sops & Loan Assn	721689	May	1	-
Eckert, et al	(Kearney)	United Concrete Enterprises	722712	-	4	-
Economy Construction Co. Inc.		STATE OF WASHINGTON	723658	-	25	-
Economy Construction Co. Inc.		Thillberg, Gayle	723710	June	25	-
Eckert Automotive Service Inc.		White Motor Co.	725400	-	30	-
Echo, et al	Thelma B	Seach, City of	725644	Jul	6	70
Echo	Walter R.	do	725214	-	6	-
Eckert Automotive Service, Inc.		Hastings Mfg. Co.	725898	-	7	-
Eckert, et al		Burch Floorcraft Inc.	725718	-	8	-
Echo Construction Incorp.		STATE OF WASHINGTON	725906	-	14	-
Echo Construction Inc.		Trust Fund Services, Incorp.	726080	-	20	-
Chicago, et al		Black River Security Inc.	726422	-	28	-
Chicago, et al		Strom, Judy M.	726458	-	29	-
Echo Construction Inc. et al	Ronald GARN. DEPT.	COMMERCIAL SERVICE COMPANY, Inc.	665930	Aug	13	-
Economy Construction Co. Inc. et al		First Bank Mortgage Corporation	727672	Sept	1	-
Echo Lake Associates et al		COMMERCIAL SERVICE COMPANY, Inc.	728339	-	15	-
Economy Car Leasing Inc. et al		Rogers, Kenneth D. et ux et ano	729162	Dec	8	-
Economy Finance Co. Inc. et al		Benefit Trust Life Insurance Company	729519	-	16	-
Eckert, et al		Atkinson, Meriel	727852	Aug	24	-
Eckert, et al		Brennan Supply Co., Inc.	731266	Dec	1	-
Economy Finance Co. et al		do	731266	-	1	-
		Fletcher, Dorothy F.	731948	-	16	-



# GENERAL INDEX - DEFENDANT - SUPERIOR COURT, KING COUNTY, WASH.

DEFENDANT	GIVEN NAME		PLAINTIFF	NUMBER OF CAUSE	DATE OF FILING		
	ARCD EFGH I J	KLMNOP QRSTUVWXYZ			Month	Day	Year
Ed land		Gene	E. Federal Finance Co.	652164	Jan	4	1966
Edmonds et ux		Lloyd	J. Chaffee Jack L et ux	652621		14	
Edwards		de Roy	Edwards Karin	652971		20	
Edwards et ux	Dorothy	Kerry	Ana Benjamin & Tillne	653394		28	
Edgerton Realty Inc			Federal Employees Credit Union	649688		31	
Edwards		Johnny	L. Edwards Minnie E	653941	Feb	8	
Edmondson		Glenn	R. Edmondson Melodie A.	653955		8	
Edwards		Robert	E. Edwards Gloria A.	654853		29	
Edwards		Roy	J. Edwards Bernice J.	655057	Mar	1	
Edwards et al	Eleanor		Spahnman & M Lean Co.	655468		8	
Edgewater Inn			GARN. DEFDT. Burns, Myrtle Louise	577484		15	
Ans. * Colholm		Richard	R. Cougar Mountain Assoc.	655850		15	
Edwards Engineering Corp. et ano			Panorama Home Inc., et al	655885		16	
Edline et al	Howard		Yacht Percy L.	656278		23	
Edwards et al	Elvin		T. William A. Eastman & Co.	656637		30	
Ed's Automobile et al			" " " " "	656637		30	
Edwards		Thomas	A. Christensen Frederick W et ux	657238	Apr	11	
Ed's Shell Service et ux			GARN. DEFDT. COMMERCIAL SERVICE COMPANY, INC.	652201		12	
Edgell	James		K. Sartain Dorothy	657703		19	
Edmonson et ux	Joe		Sara Reubuck Co.	657975		22	
Edwards et ux	(Gloria)	Robert	E. New York Life Ins. Co.	658148		26	
Edelbrock Jr et ux		Robert	C. Bomber Francis W et ux	658163	May	6	
Edwards et ux	(Josephine)	Murineux	Wid. Fed. Sav. & Loan Assoc.	658810		9	
Edson Industries		Thomas	A. Haskell Inc.	656342		11	
Edwards Seattle Corp			GARN. DEFDT. Northwestern Collection Service	658999		12	
Edmunsor	Genevieve		Workman E R, Mba	659522		20	
Edwards		Robert	H. Edwards Ruth A.	659640		24	
Edwards et ux		W. R.	MRDA. Inc.	659939		31	
Edwards		Robert	W. Edwards June J.	660366	Jun	7	
Edmonds Yacht Club			GARN. DEFDT. Household Finance Corp	661075		20	
Edwards	Clifford		Edwards Agnes R H.	661146		21	
Edmonds School Dist No 15			GARN. DEFDT. COMMERCIAL SERVICE COMPANY, INC.	661103		22	
Edge	Carl		N. Edge, William E.	661588		29	
Edwards, et ux, et ano Charles	(Mary)		E. Seattle-First National Bank	661743	July	1	
Edwards Seattle Corp.			RECEIVERSHIP Bessie Oswald, et al	661748		1	
Eddy, et ux	Charles		W. Fennell, Henry F.	661897		6	
Edgerton Realty Inc			Wooding, West S, et ux	661911		7	
Edwin R. Hoyt Research & Development, et al			COMMERCIAL SERVICE COMPANY, INC.	662519		19	
Edinburgh Assurance Co. Ltd. et al			Puget Sound Ind & Marine Co. et ano	662586		20	
Ed Bishop & Associates Inc, et al			Master Roy E	662616		20	
Eckerman, Ed M. Edward			Here, Richard J	660903		20	
Edinburgh Assurance Co. Ltd. et al			Puget Sound Ind & Marine Co. et ano	662705		21	
Edwards, et ux, et al Gordon			O. Stewart, Harriet	663837	Aug	11	
Edwards, et ux, et al Eleanor			H. Metropolitan Life Ins Co.	664114		12	
Edwards et ux			L. Hill, Kenneth	664391		22	
Edling	Florence		Tarson, Hillean	664525		24	
Edwards et al	Eleanor		Metropolitan Life Ins Co	664786		29	
Edwards et al	Louis Margaret	R.	Coleman, Donna J.	665020	Sept	1	
Edwards et al	Eleanor		Union Fed. Sav. & Loan Assoc.	665404		9	
Edwards,	Joan		L. Edwards, Franc.	665481		12	

(over)

# GENERAL INDEX - DEFENDANT - SUPERIOR COURT, KING COUNTY, WASH.

DEFENDANT	GIVEN NAME		PLAINTIFF	NUMBER OF CAUSE	DATE OF FILING		
	ABCD EFGH	I J KLMNOP Q RSTUVWXYZ			Month	Day	Year
Ed Couche, d/b/a T & E. Construction Co			Commercial Service Company	666020	Sept	16	66
Edellman, James		BARN. DEFT.	H. Edellman Tonia	665985	"	20	"
Edwin, Betty			J. Lum Linda	666014	"	21	"
Edwards, et ux George			Whittaker, Kymer	666087	"	22	"
Edmond, et ux (Barbara)			Walter H. Commercial Service Co., Inc.	666994	Oct	7	"
Edgerton Realty Inc.		GARN. DEFT.	Smith, Jeanne E.	601005	"	11	"
Edgewater Park Apt.		GARN. DEFT.	Mulick, Donna L.	646667	"	13	"
Edwards, Sr. Charles			C. Edwards Betty B.	667539	"	18	"
Ed Bishop & Assoc. Inc.			McMullen, Anthony, et ux	667777	"	21	"
Edwards, et ux		Malcolm	Ocho Richards Inc.	667827	"	24	"
Ed Bishop & Assoc. Inc., et ux			Wash. Corp, James	667880	"	25	"
Edglow, Geoffrey			I. Craftman Russ Inc., den	667893	"	25	"
Edmonds Reg & Bldg Co, et ux			Dalrymple, Frank, et ux	667944	"	25	"
Edwards, et ux		John	Seattle Public Schools	668096	"	27	"
Edwards, Jr.			H. Edwards Georgia	668289	Nov	1	"
Edwards Seattle Corp, et ux			Kesser, Oswald, et ux	668817	"	9	"
Edmondson, et ux			Edmondson Theodore R., Jr.	669101	"	15	"
Edwards, et ux		Tomnie	Edwards, Lou Kay	669110	"	15	"
Edgerton, Donald			A. Edgerton, Jacquelyn I.	669579	"	23	"
Edens, David			B.F. Edens, Norman A	670211	Dec	6	"
Edmondson, et ux		Marion	Cigarette & Clark Inc.	670308	"	7	"
Edwards, et ux		Thomas	W. Edwards, Gloria M.	670431	"	8	"
Edinger, et ux, et ux Henry (Larry, et ux)			J. Faroo, Milo J.	670649	"	13	"
Edgewise Inc, et ux			Marshall Field & Co, Inc	670968	"	20	"
Edwards, Jr.		Thorne	N. B. C. of Seattle, et ux, et ux	671640	Jan	5	1967
Eding, et ux		Wagner	A. Eding, Susan L.	671931	"	10	"
Edwards, et ux		Paul	Edwards, Eddie L., Jr.	672147	"	13	"
Edwards, et ux Mrs. Karlen			H. Asia, Benjamin, et ux	672174	"	13	"
Edwards, et ux Joan			L. Edwards, Ivan C.	672290	"	17	"
Edwardson et ux Helena			Devore, Marie R.	672563	JAN	20	1967
Edwards, et ux		Jan	V. Edwards, Jeanette	672599	"	20	"
Edwards, et ux Karlen			H. Tracy, Timothy	672708	"	24	"
Edwards, et ux Joyce			L. Edwards, John A.	672980	"	27	"
Edwards, et ux William			C. Edwards, Ethel S.	673128	"	31	"
Edwards, et ux Junion			Kaymable, Charles P.	673670	Feb	9	1967
Edwards, et ux (Marion) Norman			W. Lund Masonry Inc.	674199	"	17	"
Edwards, et ux Clifford			S. Wenzel, Madeline E. guard ad Item	674313	"	21	"
Edwards, et ux James			W. Edwards, Agnes R.H.	674671	"	28	"
Edwards, et ux (Barbara) Edward			Tom Chapman Ford Inc.	674688	"	28	"
Edgewater Inc, et ux			Snow Harold F., Jr., et ux	674797	Mar	1	"
Edy, et ux Lela			McAllister William J., et ux	674813	"	2	"
Ed Bishop & Assoc. Inc.		GARN. DEFT.	J. Passer, Patricia A.	675038	"	7	"
Edwards, et ux Gene			Federal Furniture Co. Inc.	678309	"	29	"
Eden, et ux Michael			E. Edwards, Felicia	676576	Apr	3	"
Edinburgh Inc Co Ltd, et ux			R. Eden, Judy L.	676709	"	4	"
Edmonds, et ux (Recreational Dept)		GARN. DEFT.	Eden, Warren A., et ux	676976	"	7	"
Edman, et ux			Business Mfg's Building Bureau Inc.	677192	"	"	"
Edmonds Auto Supply Inc, et ux			E. Edman, et ux	678377	May	2	"
Ed Barnes Janitorial Service, et ux			Eden, et ux	678682	"	8	"
			Dept of Labor Industries - State of Wash	679972	"	31	"

# GENERAL INDEX - DEFENDANT - SUPERIOR COURT, KING COUNTY, WASH.

DEFENDANT	GIVEN NAME		PLAINTIFF	NUMBER OF CAUSE	DATE OF FILING		
	ABCD EFGH IJ	KLMNOP QRSTUVWXYZ			Month	Day	Year
Edmonson, et ux	Frank		Starks, William R.	679998	May	31	1967
Edmonds Floor Covering.			GARN. DEFT. Washington Credit Inc	627144	Jun	6	-
Edgerton Realty, Inc. et al			Trion, Robert J.	681367	-	23	-
Edmonds		Ronald P	Edmonds, Kathleen R	681419	-	23	-
Edman	Barbara		GARN. DEFT. Edman, Alpha A.	678399	-	27	-
Edwards, et al	Eleanor		Westside Federal Savings Loan Assoc	681675	-	28	-
Edwards, et al	Eleanor		" " " " " "	681676	-	28	-
Edwards, et al	Eleanor		" " " " " "	681677	-	28	-
Edwards, et al	Eleanor		" " " " " "	681679	-	28	-
Edwards, et al	Eleanor		" " " " " "	671680	-	28	-
Edmonds		Rose Z	Edmonds, Sandra K	682677	July	17	-
Edies Restaurant			GARN. DEFT. Stauder, Jerry	675051	-	19	-
Edmonds Roofing Co, et al			GARN. DEFT. Commercial Service Co Inc.	683494	Aug	2	-
Edmonds		Robert L.	Smith, H. C.	683912	-	7	-
Edwards, et ux	Don		Spicer, Wm D. et ux et al	684301	-	14	-
Edwins	Alannah		C. Universal Guardian Acceptance Corp Ltd	684396	-	15	-
Edmonds, City of			GARN. DEFT. King County Credit Men Inc.	682331	-	25	-
Edwards, et al		Mayrtle	S. Edwards, Norris et ux et al	685518	Sept	9	-
Edwards		Paul	W. Edwards, Judith C.	686133	-	13	-
Eddie's Grocery et al			Ericson, Carl E.	686226	-	14	-
Edehman	Fred		A. Edehman, Julia M.	686242	-	15	-
Edgerton Realty Inc, et al			Swarson, Robert H. et ux	686871	-	26	-
Eden			W. Eden, Oleta M.	686917	-	26	-
Edwards	Amelia	John	M. Edwards, Richard	687050	-	28	-
Edible Products Inc.			Seattle First National Bank	687221	-	29	-
Edwards,	Elinor		B. Commercial Service Co Inc.	687601	Oct	9	-
Edwards, et ux		Malcolm (Spoke)	L. Collman, D. A.	687737	-	10	-
Edge		William E	Edge, Carol M	688033	-	13	-
Eddy	David		C. Eddy, Dorothy F.	688121	-	16	-
Edwards, et ux, et al	(Edna)		Ray W. Commercial Service Co Inc.	688142	-	16	-
Edwards	Frankie		L. Edwards, Peggy A.	688220	-	17	-
Edner Corporation			GARN. DEFT. Parkside, Betty	688366	-	19	-
Edwin, et ux et al		Robert O.	Mallabron Range Co	688492	-	20	-
Edmonds, et ux	(Kathleen)	Ronald P.	New York Bank for Savings	688726	-	25	-
Edmunds		Margaret	Commun, Ronald J	689123	1/6	1	-
Edwards		Mottle	L. Edwards, Ella S.	689200	-	2	-
Edwards	Charles		E. Edwards, Mary	689238	-	7	-
Edmonds		Robert L.	GARN. DEFT. Edmonds, Hazel	689848	-	13	-
Edgerton Realty			GARN. DEFT. Seattle Adjustment Bureau	688071	-	17	-
Edmonds School	Dist No. 15		GARN. DEFT. Household Finance Corp. of Seattle	688301	-	27	-
Edwards	Donald		L. Edwards, Rita L.	690749	-	29	-
Edwards, et ux	Eileen		Hjr Commercial Service Co.	691028	Dec	5	-
Eddy, et ux	Garry		Federated Amusement Co.	691096	-	5	-
Edwards		Sharon G.	Edwards, Curtis L.	691565	-	13	-
Edwards		Richard C	Edwards, Amelia K.	691607	-	13	-
Edwards		Maurice L.	Edwards, Barbara Ann	692203	-	27	-
Ed's Signal Service, et al			Notziger, Janne	692316	Jun	16	1968
Edmonds et ux	(Harold)	Robert L.	Koch, Edwin R. et ux	692877	-	18	-
Edstrom, et ux et al	Eugene	(Magelle)	Cass, Harry D. Jr. et ux et al	693006	-	23	-
Edwards, et ux	Glenn (Jan)		C. United Home Corporation.	693438	Feb	6	-

# GENERAL INDEX - DEFENDANT - SUPERIOR COURT, KING COUNTY, WASH.

DEFENDANT	GIVEN NAME ABCDEF GH I J KLMNOP QRSTUVWXYZ Second Initial	PLAINTIFF	NUMBER OF CAUSE	DATE OF FILING		
				Month	Day	Year
Educators Investment Retirement Fund Inc. et al		Jay Free Plumbing & Heating Co. et al	693746	Feb	15	1968
Edever Corporation		Winnell, Blanche et al	693965	-	21	-
Edler, et al	Jack	L. Commercial Service Co. Inc.	694055	-	27	-
Edinger, et al	John	G. Jack L. Still - Associates, Inc.	694388	Mar	7	-
Edinger et al et al Bonnie		R. Lapsansky, Mike et al et al	694603	-	13	-
Edmonds Truck & Cargo Co. et al		Crowe Machine Works, Inc.	694762	-	19	-
Edwards et al	Earl	E. Mills Land & Travel Co. et al	695117	-	27	-
Edmonds, et al	Larry	Northwest Concrete Products, Inc.	695252	Apr	1	-
Edgerton Realty Inc. et al		Quinn, Emma S	695836	-	18	-
Edmonds, et al	John	T. Morrison, Wayne C.	696021	-	24	-
Edwards et al et al	Harlan	H. Reddel Inc.	696115	-	26	-
Edwards et al et al	Harlan	H. Pacific Trade Inc.	696116	-	26	-
Edmonds Pooling et al		GARN. DEFT. Household Finance Corp. of Seattle	696454	May	8	-
Edwards et al	(Janice)	Thomas et al Housing Authority of the City of Seattle	696517	-	9	-
Edelrock, et al	Nicola	Quinn - Sorensen Capitalac, Inc.	696571	-	13	-
Edmonds - Alderwood Auto Freight Co.		GARN. DEFT. Lyngel, Norma H.	696610	-	14	-
Edinger, et al	Bonnie	GARN. DEFT. Liberty Mortgage, Inc.	673542	-	14	-
Edgerton et al et al	(Rosemary)	Richard K. Numborg, Elinor E.	696844	-	21	-
Edwards et al	Clarence	King County Credit Union Inc.	697449	Jun	11	-
Edmonds Plumbing, et al		Deifer, John et al	697706	-	18	-
Edgerton Realty, Inc. et al		King County	697759	-	19	-
Edmonds Yacht Club Inc		GARN. DEFT. N.W. Audel - Ady Co	682948	-	20	-
Edwards, et al		Richard B. C.M.A. Corporation	697959	-	26	-
Edwards Co. et al	E.	H. Sierra, Gloria	698397	Jul	11	-
Edmonds et al	Henry	L. Smith, Donald J. et al	698644	-	12	-
Edwards et al	(Zola) Rudolph	Commercial Service Co. Inc.	698763	-	23	-
Edwards (Mrs) et al	Harlan	H. Freedman, Hanna et al	699307	Aug	7	-
Edler, et al, et al		William F. Northshore School District No 417	699648	-	16	-
Edler, et al, et al		William F. " " " "	699648	-	16	-
Edwards, (Mrs) et al	Harlan	H. Freedman, Hanna, et al	699865	-	23	-
Ed's Building, et al		Kubicki, Edw. et al, et al	700621	Sep	17	-
Edmondson, et al	George (Elice)	Shaub-Warwick Co. Inc.	700714	-	19	-
Edwards, et al	Nan	Meyers, Louise K.	701077	-	27	-
Edinger, et al	Adrian (Julia)	C. Espinoza, Louise	701149	Oct	1	-
Ed's Eco Service et al		Automobile Mutual Insurance Co of America	701602	-	15	-
Edwards, et al (Cheryl) Carl		D. Deifert, Forbes & Denny	701750	-	18	-
Educators Manufacturing Co		GARN. DEFT. Commercial Service Co. Inc.	681139	-	31	-
Edwards, et al	(Janette) Lee	Farway Finance Lynnwood, Inc.	702576	Nov	8	-
Edwards et al et al Benjamin (Janice)		First Mutual Savings Bank of Wash. et al	702957	-	22	-
Edwards (Mrs) et al	Harlan	H. O'Keefe, June et al	703099	-	27	-
Edwards et al et al	Paul	O. King County	703239	Dec	3	-
Edwards, Mrs et al	Harlan	H. E. D. Corp. et al	703648	-	16	-
Edmonds Apt Co, et al		Bennett, Peter P. et al	704346	Jan	10	1969
Edgerton Realty Inc		Associated Credit Adjustors Inc.	704502	-	16	-
Edmondson, et al et al		William B. Pittman, Inc.	704618	-	20	-
Edmonds School District (Chase Lake School)		GARN. DEFT. Slope Finance Co.	704905	-	27	-
Edmonds School District #15		United Collection Service Inc.	704321	-	30	-
Edmonds, et al	Louis	H. Cole, William H. et al	704974	-	30	-
Edelman, et al	Carl	C. Brauner, Frank J. et al	705073	Feb	4	-
Edwards Co. Inc. et al	George	D. Buchanan, Johnson & Associates, Inc.	705581	-	17	-

# GENERAL INDEX - DEFENDANT - SUPERIOR COURT, KING COUNTY, WASH.

DEFENDANT	GIVEN NAME		PLAINTIFF	NUMBER OF CAUSE	DATE OF FILING		
	ABCD EFGH IJ	KLMNOP QRSTUVWXYZ			Month	Day	Year
Edmonds Trusty Club apt Co. et al			First Bond Mutual Savings Bank	705739	Feb	20	1969
Edwards, et al Earl			Wholesaler's Assoc of Tacoma	705766	-	24	-
Edmonds School District			Hyllming, Wells O. et al	704547	Mar	4	-
Edwards, et al Clarence			Muller, Richard E. (Wallina)	706169	-	5	-
Edwards, et al Max			Herrmann, Karl	707225	Apr	1	-
Edwards Auto Parts et al			Do	707225	-	1	-
Edgerton Realty, Inc			Commercial Service Co., Inc	705540	-	1	-
Edwards, et al Frank (Penney)			Washington Credit, Inc.	707461	-	8	-
Edwards, et al Carl			Pacific Northwest Collections Inc.	708158	-	24	-
Edwards et al C			W. Hillman, Gayle	718300	-	29	-
Edinger, et al Henry			Jay Free Plumbing & Heating Co. Inc.	708601	May	6	-
Edwards (City Council)			State of Wash. et al	708445	-	14	-
Edwards (Santalle, Kay)			Nachman's Capital & Adjacentments	708981	-	15	-
Edwards (Michael)			Anchor Savings Bank et al	708999	-	15	-
Edgewater Inn et al			Arthur, Clarence et al	705249	-	23	-
Edwards et al Carl			F. Dennis, Lee	709308	-	26	-
Eddy, et al Gary			Dammichelen, Robert et al et al	709485	-	29	-
Eddy et al Gary			Hilltop Suburban Club Inc	70668	July	1	-
Educational Credit Bureau, et al			Fischer, Alice W.	711025	-	11	-
Edwards et al (Henry) Ellis			Halgeson, Henry et al	71102	-	14	-
Edmonds-ALDERWOOD MANOR AUTO-FREIGHT Co.			Ross, James E. et al et al H.R. Kalin	711396	-	22	-
Edwards, et al Marineau			Shirley W. Jordan	711677	-	29	-
Edgerton et al Deloris			Wilton, Uelto	711940	Aug	5	-
Edge, et al Elizabeth			Knowl, Thomas	711972	-	6	-
Edmonds Underground, Inc. et al			Mutual Credit Assoc. Inc.	712258	-	13	-
Eddy et al et al Wayne			Sound Conduit Corp.	713533	Sept	12	-
Edman et al (Bessie) Inar			Blankenship, Miles	713769	-	22	-
Edgerton Realty, et al			Price, Fred G. et al	713879	-	24	-
Ed and Fred's Automotive			Greenwood Savings Loan Assoc. of Tacoma	714556	Oct	10	-
Edwards, et al (Lulu)			D-K Auto Parts, Inc.	714923	-	21	-
Ed Selden Floor Coverings et al			Mars Electric Co., Inc.	715496	Nov	4	-
Edgewater Inn			Collens, Aaron et al	715946	-	17	-
Edwards et al Holly			Day, Walter M.	716082	-	19	-
Edmunds et al Herbert			State Credit Association, Inc.	716133	-	22	-
Edmundson et al Thurmon			Union Federal Savings & Loan	716149	-	20	-
Edwards et al Marlan Myrtle			Regency Limited, Inc.	716949	Dec	12	-
Edsel, et al d/b/a Hair			Bowers, Jenny et al	717899	Jan	13	1970
Ed Selden Floor Coverings et al			Walmsley, Phyllis d/b/a	717984	-	14	-
Edwards et al Eroyan			Union Day Plumbing, Inc.	718080	-	16	-
Edgerton Realty, Inc et al			Western Collections, Inc.	717856	-	19	-
Edmonds School Dist #15			Equitable Life Insurance Co of Iowa	718243	-	21	-
Edie Adams Curio and			Commercial Service Co. Inc	704016	-	27	-
Edwards et al (Bridget) Mission			Jones, Albert R. et al d/b/a	719188	Feb	15	-
Edwards et al Durval			Credit Association	719457	-	18	-
Edie Building Co.			Dickens, Steven R. et al	72000	Mar	3	-
Ed Selden Floor Coverings et al			Air Fee Co.	720187	-	6	-
Edinger et al et al Paul			Ballard Mortgage Co.	720245	-	20	-
Edwards et al (Gon) Gerald			Bank of the West	720875	-	20	-
Edis et al James			Sans, Paulok et al	721201	-	27	-
			Cook, Ray H. et al (Anita)	721281	-	31	-

# GENERAL INDEX - DEFENDANT - SUPERIOR COURT, KING COUNTY, WASH.

DEFENDANT	GIVEN NAME				PLAINTIFF	NUMBER OF CAUSE	DATE OF FILING	
	ABCD	EFGH	IJKL	MNOPQRSTUVWXYZ			Month	Day
<b>Ed's</b> Bullazing et al					Morris, Robert C	721582	Apr	7 1970
Edwards			Louise	H	Mountain Finance Corp of Seattle	721615	-	7 -
Edelbrock Guy Harold			(Kawena)		Leary, Ruthwick & Co	721753	-	9 -
Edwards, et al			John	cc	COMMERCIAL SERVICE COMPANY, Inc	721780	-	21 -
Eds Pacum, et al					Cochran, James	721952	-	25 -
Edwards et al aka Standard Realty			Paul	C	Bundelin, H C et al	722118	May	1 -
Edwards et al Co. et al			Clair	F	Chy, Clementia	723296	-	15 -
Edwards, et al (Edie)			Robert L		Jennings, Felix	723320	-	14 -
Edwards et al aka et al (name)			(name)		Smith, Gerald et al	724169	June	5 -
Edwards, et al et al					COMMERCIAL SERVICE COMPANY, Inc	724493	-	12 -
Edgerton Realty, Inc et al			et al		Burdick, Wayne et al	724685	-	17 -
Edmonds et al et al #15				BARR. DEF.	Priority Finance - Lake City Inc	723078	-	18 -
Edmonds, et al			Paul	C	STATE OF WASHINGTON	724871	-	22 -
Eden Rec Apartments et al					Edton, Jim	724908	-	22 -
Edwards, et al			Thomas	J	COMMERCIAL SERVICE COMPANY, Inc	725280	-	29 -
Edgerton Realty, Inc et al			et al		Knorr, Thomas	711972	-	6 -
Edgerton Realty Inc et al					Adams, Belle M	726039	-	17 -
Edwards, et al			et al		De Paula, Wilma et al	726142	-	21 -
Edgerton Electric et al					Van Dooe Distributors, Inc	726667	-	17 -
Edham, et al Eugene Moyelle					Tharvey, G. J. et al	726341	-	27 -
Edwood Electric et al					Sherebrook & Roberts - Mattie	726407	-	28 -
Edmonds, et al			et al	H	Waidel, Rita et al	726548	-	31 -
Edris et al James			et al	D	McCormick, Jeremiah et al	726856	Aug	10 -
Edwards, et al			Thomas	D	Petuch, Dorothy P	727268	-	20 -
Edley et al Eugene					Ellison, Jim	727336	-	24 -
Edwards, et al			Robert	cc	Hanno, Margu, C.	728136	Sept	14 -
Edwards, et al et al (name)			(name)		Camardoni, Aldo et al	728381	-	21 -
Educational Consultants, Inc					Media Research Associates, Inc	728534	-	23 -
Edward, et al				BARR. DEF.	Standard Trust Properties, Inc.	727035	Dec	2 -
Edwardson, et al Louise				cc	Franklin Savings Loan Assoc.	729602	-	20 -
Edward's Industries et al					Am Industries, Inc	729641	-	20 -
Ed's Concrete & Formwork et al					Anderson, H. C.	729653	OCT	21 -
Edelmann & Co Profit Sharing Trust et al					Fox, Charles	729951	-	28 -
Edgerton Realty et al			Norman		Jensen, Leo, Jr. et al	730122	Nov	2 -
Edwards, et al			John (Mary)	C	Knowle Wilmo	730149	-	4 -
Edwards Chevrolet, Inc			Tom		Fidelity Finance Co of Denver	730405	-	9 -
Edwards et al (Yvonne)			(Yvonne)	H	Lazare, Paul et al	730426	-	10 -
Edwards, et al			Maryann		Crown Savings Co Inc	730607	-	13 -
Edmonds et al et al			John	J	Express Typing B.	730837	-	18 -
Edwards et al et al (Karin)			(Karin)		C.D. Corp	731192	-	30 -
Edmonds School et al				BARR. DEF.	Bellevue Don & Millwork Co	731250	Dec	1 -
Edwards, et al Florida				B.	Wash. Teachers Credit Union	707561	-	7 -
Eason et al Arthur (Alice)					Dime Savings Bank of New York AKA	731873	-	15 -
					Rose Point Construction et al	731187	-	30 -

# GENERAL INDEX - DEFENDANT - SUPERIOR COURT, KING COUNTY, WASH.

DEFENDANT	GIVEN NAME				PLAINTIFF	NUMBER OF CAUSE	DATE OF FILING		
	A B C D	E F G H	I J	K L M N O P Q R S T U V W X Y Z			Month	Day	Year
<b>Ee-Ek</b>									
Ehlers			Roger	A	Ehlers, Shirley	652645	June	14	1946
Egbert	Allen			G	Egbert, Ann	652668	June	14	✓
Eggleston et ux		Harlan			Orme Earl Nelson	652818	June	18	✓
Eggers			Maurice		Young, Jack	653234	June	25	✓
Eha et ux	Bernice				Household Finance	654095	July	10	✓
Eggstad		(Madelon)	Sherman	B	Met Fed Sav & Loan Assoc	654644	July	21	✓
Eherton			Kenneth	D	Loynes Delois	654689	July	23	✓
Ehlerberger et ux		John (Lita)		D	Loynes Finance Co No 2	655701	Mar	11	✓
Eichner et ux			Rodney	K	Navin Dale E. et ux	655759	July	19	✓
Eggleston et ux et al	D	(J. Milbr)		E	Kate Jane L et ux	657176	Apr	15	✓
Euchi et ux			Ronald	J	Met Fed Sav & Loan	657866	July	21	✓
Eggen			Milo		Eggen Jane L.	658520	May	3	✓
Eisenmann et ux	Charles			B	Northwest Audit & Adj. Co.	659236	July	17	✓
Eggleston		Jay			Eggleston Peggy	660205	June	3	✓
Ehle			Ralph	M.	Ehle Emma T.	660259	June	6	✓
Eiffert et al	(Evelyn)	Louis			Northwest Collectors Inc.	661397	July	27	✓
Egan et ux	Barbara			A.	Peoples National Bank of Wash	661528	July	22	✓
Ehle, aka		James		P.	Sylvester, Barbara J.	661574	July	27	✓
Eimon, et ux	(Elyse)		Vernon	M.	Villars, Rod	661926	July	8	✓
Eppich-Blamason Co., et al					McC Donald, Harold F.	661996	July	8	✓
Ehly			Richard	K.	Ehly, Lila Jo.	662833	Aug	28	✓
E Penbanger			Larry	D.	Urbain, George	664460	Aug	23	✓
Eidal			Marcus	Q	Eidal, Ruth	664505	Aug	24	✓
Eichner et ux			Rodney		Am Bureau Cabinet	664804	Aug	30	✓
Eichner et ux et al			Rodney	K	Metropolitan Federal Savings & Loan	664921	Aug	31	✓
Eichner et ux et al			Rodney	K	Metropolitan Federal Savings & Loan	664922	Aug	31	✓
Eide, et ux,	(Naomi) Orville			J.	First Manhattan Bank	665124	Sept	6	✓
Egle			Salmon	J.	Collinge, Gordon C	665818	Sept	16	✓
Eiffert, et ux, et al		(Martha)	M		Stiffel, Harry, et ux	665831	Sept	16	✓
Eichner, et ux (Eichners Construction) et ux					Colb Collection Co. Inc.	665870	Sept	19	✓
Egerton & Realty Inc.					State Credit Assoc.	666170	Sept	22	✓
Egger, et ux			Robert	S.	Ruggles Inc.	666503	Sept	29	✓
Eggenhous, et ux			Erroy	E	Shaw Hoback & Co.	666714	Oct	4	✓
Egle, aka, et ux, et al	(Helen) (Pamela) Ralph				Wise, Byron S., et ux	667398	Oct	14	✓
Egbert	Ann			L.	Egbert, Allen G.	667881	Oct	25	✓
Eidinger, et ux et al	Adrian (Julia)			C.	Natl Bank of Wa.	667946	Oct	26	✓
Eichorn & Melchor North Inc, et al					Thoyse, Harold S.	668020	Oct	26	✓
Eichorn, et ux, et al	(Ann) John			P.	" " "	668020	Oct	26	✓
Eide, Donald					Burgess & Homes	668117	Oct	31	✓
Eidinger, aka Adman & Fuller (A.C.)				C.	Natl Bank of Wash Tacoma	668433	Nov	2	✓
Eidman, et ux	Ingraham			P.	Eidman, Florence M.	668445	Nov	3	✓
Egan	Paul			M.	Mendley, Mack, et ux	662999	Nov	18	✓
Eg et al		Louise		J.	King County	667961	Nov	1	✓
Ehrlichman	Bert			B.	State of Washington (Panda)	670294	Nov	7	✓
Ehanger,		Olaf			Trivig, Glenn J.	670819	Nov	15	✓
Egans, et ux	Ruby			B.	Dickman Paula B.	671573	Jan	3	1947
Episcopal Society of Christ Church					N. B. C. of Seattle	671640	Jan	5	✓
Episcopal Society of St. Paul's Church					N. B. C. of Seattle	671640	Jan	5	✓
Egbert et ux			William E		Wockner, E. R.	672320	Jan	17	✓

# GENERAL INDEX - DEFENDANT - SUPERIOR COURT, KING COUNTY, WASH.

DEFENDANT	GIVEN NAME	PLAINTIFF	NUMBER OF CAUSE	DATE OF FILING		
				Month	Day	Year
<b>Ec-Ek</b>						
Eggen	William E.	Eggen, Marion	672499	Jan	19	1967
Eggen, J. J.	John Joe	Northwest Capital Sales Inc	670510	Feb	6	-
Eggen, J.	Nancy	Eggen, John J.	673501	-	7	-
Eggen, Clarence		Eggen, Margaret	673845	-	14	-
Eggen, Donald		Eggen, Sandra	674245	-	20	-
Eggen Construction Inc, et al		Schubert, Major T. Don	674527	-	24	-
Eggen, J. J.	Alton (Ina)	U. S. H. Corp.	674596	-	27	-
Eggen, J. J.	John	E. Electrical Products Consolidated	67467	Mar	4	1967
Eggen Construction Co.	William	King County Credit Bureau	675062	-	7	-
Eggen, et al	Alton	Coults, William, Jr., a.k.a.	675131	-	8	-
Eggen, et al	Raymond	Eggen, Dolores	675324	-	10	-
Eggen, et al	Dorothy (Annie)	King Highlands Inc.	675966	-	22	-
Eggen, et al	James	Eggen, John	677003	April	10	-
Eggen, et al	Walter	W. S. & S. Inc.	677706	-	20	-
Eggen, et al	Walter (William)	National Bank of Commerce	677798	-	21	-
Eggen, et al	John	M. Eggen, Milo	679217	May	16	-
Eggen, et al	Laura	Eggen, Walter W.	679446	-	19	-
Eggen, et al	Lojal	W. Lermott, Mark et al, et al	679468	-	27	-
Eggen, et al	Laura	Eggen, Viola	680293	Jan	6	-
Eggen, et al	Laura	Eggen, et al	680972	-	15	-
Eggen, et al	Laura	Eggen, et al	681002	-	16	-
Eggen, et al	Laura	Eggen, et al	681028	-	16	-
Eggen, et al	Laura	Eggen, et al	681653	-	28	-
Eggen, et al	Dianna K.	Cherry House Properties	682040	July	6	-
Eggen, et al	Dianna K.	Cherry House Properties	682040	-	6	-
Eggen, et al	Dianna K.	Cherry House Properties	682200	-	7	-
Eggen, et al	Donald	Forde, Neil B.	682481	-	21	-
Eggen, et al	Carl	Krist, K. J.	683450	-	25	-
Eggen, et al	Carl	Miller, Leonie	683452	-	28	-
Eggen, et al	Kurtis	Eggen, Claudia H.	684023	Aug	9	-
Eggen, et al	Robert	Universal Inc	684233	-	11	-
Eggen, et al	John Joe	Merica - Gen. Distributing Co.	685215	-	29	-
Eggen, et al	Richard	Eggen, et al	685277	-	29	-
Eggen, et al	Donald	State of Washington	685798	Sept	8	-
Eggen, et al	Adrian	Brower Co. et al	686174	-	14	-
Eggen, et al	Adrian	Eggen, et al	687304	Oct	3	-
Eggen, et al	Adrian	Eggen, et al	687338	-	3	-
Eggen, et al	Adrian	Eggen, et al	687343	-	3	-
Eggen, et al	Paul	Eggen, et al	688393	-	19	-
Eggen, et al	Harold	Eggen, et al	688880	-	27	-
Eggen, et al	Dorothy	Eggen, et al	689225	Nov	2	-
Eggen, et al	James	Eggen, et al	689810	-	13	-
Eggen, et al	Nancy	American Discount Corp.	689746	-	15	-
Eggen, et al	Robert	Schenck, Clinton H. Jr.	690106	-	16	-
Eggen, et al	Robert	Parsons, W. B.	691424	Dec	11	-
Eggen, et al	Adrian	Seattle Sales Supply, Inc	691752	-	15	-
Eggen, et al	Adrian	Paquette, Julia M.	692140	-	26	-
Eggen, et al	Robert	Richardson, William	692684	Jan	10	1968
Eggen, et al	Gene	Nationwide Finance Co of Seattle	693859	Feb	19	-



# GENERAL INDEX - DEFENDANT - SUPERIOR COURT, KING COUNTY, WASH.

DEFENDANT	GIVEN NAME		PLAINTIFF	NUMBER OF CAUSE	DATE OF FILING		
	ABCD EFGH	I J KLMNOP QRSTUVWXYZ Second Initial			Month	Day	Year
<b>Ea-Ek</b>							
Egbert, etano		Ralph L.	Household Finance Corp.	694360	Mar	6	1963
Ek, etay		Oliver (Maryon) B	Patterson, Betty L.	694564	-	13	-
Eickhoff, etay d/b/a	Harold		JCA Inc.	694717	-	18	-
Chco Construction Inc. etal			Griffin, Ben d/b/a	694750	-	18	-
Eickhoff, etay, del d/b/a	Harold		Carr, Harry A. etal	695516	Apr	9	-
Eickhoff, etay d/b/a	Harold		Carr, Harry A. etal	695598	-	11	-
Eisler, etay	Colleen		Romer Credit Co. Inc	695749	-	17	-
Egeland, etay (Betty)		Raymond	Washington Credit Inc	695803	-	18	-
Eggenfeld, etal	Isidore		Tsao, William L.	665338	-	19	-
Eschman		Robert V.	Bellis, Marvin W.	696067	-	25	-
Eichinger, etay (Worothy)		Russell M.	Real Finance Co. of Kent	696157	-	30	-
Eichmann		Robert W.	McHenry A. Q. etal	696337	May	3	-
Eilers, etay, etal	Howard		Blake, William B. etay, etal	696538	-	16	-
Eister, etay, etano	Allison		W Lauth, Verlin L.	696857	-	21	-
Eighth Street Limited Partnership, etal			Eriksson, J. H. etay	697078	-	28	-
Eighth Street Corp. etal			Eriksson, J. H. etay	697078	-	28	-
Eighth Ave. Apartments Inc. etal			Boler, Virginia	697396	Jun	25	-
Eidinger, etay Adman			Waldal, E. W. d/b/a	698334	Jul	9	-
Eichelberger (Admorny) John		e	Seattle First Natl BK.	698703	-	19	-
Eichler, etay (Mantyn) Richard			Watson Asphalt, Inc.	698779	-	23	-
Eisenach Reinhold			Rugg, Joseph C. etay	698850	-	25	-
Eighth Street Limited Partnership, etal			Be-Lu Inc.	699905	Aug	27	-
Eighth Street Corporation, etal			Be-Lu Inc.	699905	-	27	-
Egbert	Camela	J	Hendrickson, Roger A. etay	700072	-	30	-
Chco Constr Co. Inc.		GARN. DEFT.	N.C. Machinery Co etano	700353	Sept	10	-
Eickhoff, etay d/b/a	Harold		N. L. Steiner Corp. Inc	700695	-	18	-
Eickhoff, etay d/b/a			Washington Credit Inc.	700726	-	20	-
Eide, etay	John	L.	Cyrtello, Sandra	700923	-	25	-
Egbert	Juday		Loreless, Rodney L.	701315	Oct	4	-
Eichler, etay		William L.	North West Insurance Co.	703009	Nov	25	-
Emmo, etal	Larry		Thurman, Ray etay	703042	-	26	-
Emmo, etay, etano	Harry		Thurman, Ray etay	703042	-	26	-
Empire	John	GARN. DEFT.	Universal Wallboard Co	701800	-	27	-
Egle	Nan	GARN. DEFT.	Universal Wallboard Co	701800	-	27	-
Egmond, etay	Floyd		Sutherland, Vern A.	703214	Dec	3	-
Egland, etay etal	(Patricia) Robert		Continental Assurance Co.	703306	-	4	-
Eide, etay	Nile	J.	Mutual Credit Association Inc	703532	-	11	-
Eiken, etay, etai Agnet		K	Commercia Cascade Corp. d/b/a	703628	-	13	-
Ed Wright + Sons Soil Control etal			Commercial Sewer Co. etal	703919	-	26	-
Egeland, etay (Betty)	Raymond		Washington Credit, Inc.	704612	Jan	30	1969
Echler, etal	Larry		National Bank of Commerce	704945	-	30	-
Eikenhorst, etay (Christa)	Warren L.		Christensen, Arnold	705997	Feb	24	-
Chco Construction, Inc etal			Sprout Engineers & Associates, Inc	706500	Mar	13	-
Empire Erectors Co.			Sears Roebuck & Co.	707954	Apr	3	-
Eichman, etay d/b/a	Peter	J.	Etherington, Bob d/b/a	707655	-	11	-
Eickhoff, etay etal	Harold (De)		Association Collectors Inc	707779	-	15	-
Egeland	Stacy J.		Shaw, Henry P. etano	708003	-	22	-
Eichman	Peter	J.	McVety Machinery Co.	708080	-	23	-
Eicher, etay, etano	Lewis		Warthorne, Worothy	708191	-	24	-

# GENERAL INDEX - DEFENDANT - SUPERIOR COURT, KING COUNTY, WASH.

DEFENDANT	GIVEN NAME	PLAINTIFF	NUMBER OF CAUSE	DATE OF FILING		
				Month	Day	Year
<b>Be-Ek</b>						
Eichman, et al	Leite	Larson, Norma	705992	May	15	1969
Eilers, et al	Donald	Commercial Service Co., Inc	709114	-	20	-
Ekeram et al et al	(Peter) Rodney	Anderson, Bertel, et al	709417	June	15	-
E Kholm et al	Edward	Von Gooden, Charles W.	710364	-	23	-
E Kholm et al	Jan	Shoreline Personal Loan	710431	-	24	-
E Kholm et al	Allen	Gier, Norman J.	710547	-	27	-
Eggbraaten		Muller, Nelson	694012	July	2	-
Ellerts	George	Ballerid Community Hospital	711457	-	23	-
Ekness et al	Chalmers	Greenway Aluminum Co., Inc.	711787	-	31	-
Ekness et al	Chalmers	Mayer & Bacon & Assoc.	708354	July	31	-
E Kholm	Edward Mary	Way Construction Co.	711936	July	5	-
Ekle et al	Frank	State of Wash. ex rel C & S Ruchmeyer	712168	-	11	-
Eighth Street Corp		North American Insurance Co.	712418	-	15	-
E Kholm et al	Edward (Mary)	Way Construction Co.	713461	Sept	18	-
Eide et al	(Mrs) Robert	Holmes Joseph H.	714333	Oct	6	-
Eichartz et al	Tom	State of Washington	714637	-	14	-
Eggbraaten et al	(Walter) Robert	Corral, Shirley P	715641	Nov	7	-
Eickm Jr et al	(Sharon) Robert	Alcoa Credit Co.	715607	-	7	-
Ekness et al	Chalmers	Hamilton John J et al et al	715920	-	14	-
Ekness et al	Chalmers	Hamilton, John J et al et al	715919	-	14	-
Ekness et al	Chalmers	" " " "	715918	-	14	-
Ekness et al et al	Chalmers	Land Masonry Inc	716439	Dec	1	-
Eckman et al	Charles (John)	Credit Bureau Auburn et al Inc	716784	-	9	-
Eckhoff	Elsbeth	Cook, Bob et al	718630	Jan	29	1970
Eilers		Household Finance Corp of Seattle	718725	Feb	2	-
E Kholm et al		Household Finance Corp of Seattle	719512	-	19	-
Ekness et al	Chalmers	Rudell, Donald J et al	719686	-	24	-
E Kholm et al		International Union of Operating Engineers	720210	Nov	9	-
E Kholm et al		Northwest Administration	720333	-	10	-
Egger et al et al		Doss, Diana D.	720514	-	13	-
E Kholm et al	Robert S.	Hold Oil Corp.	720504	-	13	-
E Kholm et al		Hilberg, Gayle	720927	-	20	-
E Kholm et al		Seane, Ernest E et al	721766	Apr	10	-
E Kholm et al		do	721766	-	10	-
Egger et al	Robert S.	Kupper, George J et al	721796	-	10	-
Egger et al	Raf K	Mc Kusker, Carole M et al	721813	-	10	-
E Kholm et al		J + J Trucking, Inc	722740	May	4	-
Egger et al	Robert S.	STATE	723614	-	22	-
Ekness et al et al	Chalmers	Reiger, Robert C et al	723976	June	2	-
E Kholm et al		Northern Commercial Co. et al	724065	-	3	-
Eichman et al	Peter	City of Seattle	724072	-	3	-
E Kholm et al		Isol Cdr Co of Seattle	724516	-	12	-
E Kholm et al		Buck, Douglas M et al	724744	-	18	-
E Kholm et al		Wraga, John et al	725335	-	30	-
E Kholm et al		United Pacific Insurance Co	725430	July	1	-
Egger et al		Doe, Fred H et al	725602	-	2	-
Egger et al	(Barbara)	Roberts S.	726181	-	21	-
E Kholm et al		All City Fence Co. Inc.	726686	Aug	5	-
E Kholm et al		National Barbecue Co.	726733	-	5	-
E Kholm et al		Peoples National Bank of Wash.				

# DEFENDANT

~~CONFIDENTIAL~~ - Superior Court, King County, Wash.

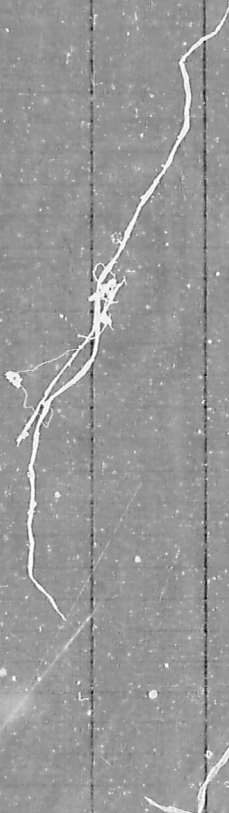
EE-EK	KURNAME	DEFENDANT - GIVEN NAME				SURNAME	DEFENDANT - GIVEN NAME				Number Of Cause	DATE OF FILING		
		A B C D E F G H	I J K L M N O P	Q R S T U V W X Y Z	INITIAL		A B C D E F G H	I J K L M N O P	Q R S T U V W X Y Z	INITIAL		MONTH	DAY	YEAR
	Ehrhard shuff		Matts		y	Puffer		Denno		R	727534	Sept	9	70
	Ehr Construction Co et al				y	Victoria Construction Co Inc					727787	6	9	70
	Egger, et ux et al		Penelope	Robert	S	Peoples National Bank of Washington					728102		11	
	Ecco Construction, Inc					Willberg, Gayle					728543		23	
	Egge			Sharon	C	San - Jac Leptals Co.					728765		28	
	Egge, et ux			Robert	S	Budbury			Phyllis		729217	Dec	9	
	Egger, et ux		Penelope	Robert	S	Western Surety Company					729403		14	
	Eastgate Power District et al					First Down Mutual Savings Bank					729937		28	
	Eckner		E		B	Washington Mutual Savings Bank					729986		28	
	Ehrlich - Harrison Corp et al					Kerr Lumber Inc					729988		28	
	Ehress, et ux et al		Beryl		D	Equitable Life Insurance Society of the United States					730129	Nov	2	
	Eisen, et ux (Dona)			Bary	C	Northwest Lumber & Lumber Co.					730460		10	
	Eholm		Edward	Mary	J	Murkey et al			Walter		730520		12	
	Eholm		Edward	Mary	J	Arnold			Julia		730523		12	
	Eholm		Edward	Mary	J	Arnold			Julia		730522		12	
	Eggers Sharpall Edward					Scandinavian Ins Co					730649		16	
	Ehrhard			Walter		COMMERCIAL SERVICE COMPANY					730704		17	
	Eight Street Corp. et al					McElroy			Nelda		731519	Dec	7	
	Eisenhower shuff et al		Harold		D	Delhoff, Larry et al					732157		22	

# DEFENDANT

DO ~~XXXXXXXXXXXXXXXXXXXX~~ Superior Court, King County, Wash.

EE-EK

SURNAME	GIVEN NAME				SURNAME	GIVEN NAME				Number Of Cases	DATE OF FILING		
	A B C D E F G H	I J K L M N O P	Q R S T U V W X Y Z	INITIAL		A B C D E F G H	I J K L M N O P	Q R S T U V W X Y Z	INITIAL		MONTH	DAY	YEAR



# GENERAL INDEX - DEFENDANT - SUPERIOR COURT, KING COUNTY, WASH.

DEFENDANT	GIVEN NAME		PLAINTIFF	NUMBER OF CAUSE	DATE of FILING		
	ABCD EFGH	I J KLMNOP QRSTUVWXYZ			Month	Day	Year
Electrical Products Consolidated Inc et al			Metropolitan Life Ins. Co.	652171	Jan	4	1966
Eled et ux	Delbert		H. L. REINER	652171		5	-
Ellsworth dba		Richard H.	Lorand Lewis Loh Scaffolds	652210		5	-
Elliott	Ronald		Hotel Navan Co.	652409		11	-
Elkin et al	(Dwena) Julia	(Raymond) et ux	Burwella Morford	652484		12	-
Elliott Bronze Co et al			Curtis Home Improving Credit	652534		12	-
Elliott	George		Harvey, Geraldine M.	652552		12	-
Elliott et al	(Joseph) Myrtle		M <sup>c</sup> Kenney Adelson E et ux	652577		13	-
Elite Shade & Linoleum Co et al			Carroll Mortgage Co.	652885		19	-
Ellis et ux	(Betty) Elden		Rossert Robert	653279		26	-
Ellis	Charles		Ellis Frances	653670	Feb	2	-
Esprit		Shirley F.	Esprit, Donald E.	653719		2	-
Electro-Roll Co.			Merchants Credit Corp.	653950		8	-
Elliott Bay Lumber Co.		GARN. DEFDT.	Frack Edith L.	613539		8	-
Ellis		Robert C.	Rud Henrietta A.	653993		8	-
Elder et ux		A.	Continental Baking Co.	654072		10	-
Ellis	James		Ellis Betty Jo	654111		10	-
Ellsworth dba	Charles	Jim	Longdon Eugene et ux et al	654203		14	-
Elliott Co et al		John	Curry Altha P et ux	654288		15	-
Elam et ux	Adrian		H. Struach L Rae	654447		16	-
Elms	Frank		Elms Gertrude M.	654651		21	-
Ellis		Robert A.	Ellis Corma J.	654726		23	-
Elkins et ux		Raymond	M <sup>c</sup> Lean Robert D et ux	654783		24	-
Elliott	Claude		Elliott Mable L et ux	655652	Mar	11	-
Elving	Dary		Elving Judith L.	655740		14	-
Elison, et ux	Elmer		Fritz, William C. et ux	655844		15	-
Elliott		William	Elliott Josephine	656020		18	-
Ellis		Ruth	Sattle City of	656199		22	-
Ellis		Marvin J.	Ellis Patricia J.	656205		22	-
Elison		Robert J.	Elison Diane J.	656265		23	-
Elison		Welfrad J.	Elison Charlotte E.	656253		23	-
Elkins et ux	Gene		Elson Bay Land & Dravels.	656380		24	-
Elmwood et ux	Bill		Fowler L J.	656465		28	-
Elder et ux et al		Janice (Marie)	General Elect Credit Corp.	656448		30	-
Elliott		William M.	Elliott Rosilma B.	656862	Apr	4	-
Elliott et ux et al		Ruby	Sparkman + M <sup>c</sup> Lean Co.	656901		4	-
Elson et ux	(add defdt)	J.	American Discount Corp.	655193		6	-
Ellis		John	Ellis Stella	657128		7	-
Elkins et ux		O'Farrell	Typical Alvin J.	657291		12	-
Ellis dba	Betty		COMMERCIAL SERVICE COMPANY, INC.	656960		18	-
Elwell et ux	(Clancha)	William H.	Local Loan Co.	658141		26	-
Eller et ux et al		Raymond	Keller Ralph H.	658279		28	-
El Mercado Inc. et al			Tatters C D. dba	658311		29	-
Elberry et ux	Best		Israel et al	658313		29	-
Ellis et ux dba		Robert	Wash. State of	658468	May	2	-
Ellis Service et al	Bob		" " "	658468		-	-
Elving		Martin	Elving Esther K.	658619		4	-
Elder		Katherine	Elder Robert L.	658623		4	-
Elving Halverson Inc. et al			Kirby, A. C. et ux	659264		17	-
Elving Halverson Inc et ux (add defdt)			Jones Don L dba	652228		24	-

# GENERAL INDEX - DEFENDANT - SUPERIOR COURT, KING COUNTY, WASH.

DEFENDANT	GIVEN NAME		PLAINTIFF	NUMBER OF CAUSE	DATE OF FILING		
	ABCDEFGHIJ	KLMNOPQRSTUVWXYZ			Month	Day	Year
Elite Shade & Linoleum Co et al			Equitable Savs Loan Assoc.	659739	May	25	1966
Ellis			P. Bell Eugene et al dba	659840	-	26	-
Elite Shade & Linoleum Co et al			Equitable Savs Loan Assoc.	659899	-	27	-
Cruck			Bueck Jack L.	651999	-	31	-
Ellingsworth Amy		Merrill	L. Dominico O.P.	660108	June	2	
Ellison		Walter	J. Ellison Charlotte E Idem	660688	-	13	-
Elton Guy		Roggie	J. Seattle Bonded Collection	660812	-	15	-
Elliott			R. Elliott Rena S.	661008	-	17	-
Electrical Workers Benefit Assoc.			Barrett Pauline	661021	-	20	-
Elliott		Julie	J. Skellings Kenneth	661324	-	24	-
Elks Lodge No. 92			Bank of California Trans	661406	-	27	-
Elderly et al		James (Marie)	A. Highland Realty	661419	-	27	-
Elliott Lumber Co, Ltd			Travelers Ind. Co.	661613	-	29	-
Eledge, Guy		Harold	W. Berger, Guy	661652	-	30	-
Ellison		Verna	L. Cof, Dolly, et al	661787	July	5	-
Elyson		Sidney	R. Elyson, Judith	662048	-	8	-
Electrical Products Consolidated			Union Fed Sav. & Loan Assoc	662401	-	18	-
Elliott, et al		(Janet M)	H. Norfolk Finance Corp	662584	-	20	-
City		Allen	L. City, Guy, et al	662605	-	20	-
Ellison		Margann	Ellison, Edward V.	662608	-	20	-
Wood, Guy		Keith	Pipe Production Credit Assoc.	663281	Aug	2	-
Ellison		William H.	H. Ellison, Stella, et al	663582	-	8	-
Elkins, et al, et al		Hugh	Northwest Bonded & Acq.	663660	-	9	-
Ellingson		John	J. Wash, State of	663659	-	9	-
Ellis, Guy		(Jane) Harold	F. Project, Joseph L., et al	663891	-	12	-
Elliott		Randy	Elliott, Mabel Lee	664162	-	17	-
Elite Shade & Linoleum Co, et al			Burwell & Morford	664174	-	17	-
Ellsworth		Robert	B. Ellsworth, Ellen I.	664231	-	18	-
Elite Shade & Linoleum Co.		etal	Metropolitan Federal Savings & Loan	664388	-	20	-
Electric Construction Co.		etal	Merrise John, Amanda	664401	-	22	-
Elliott		Robert N.	H. Northwest Finance Co. dba	664430	-	23	-
Elins et al		F. Kenneth	COMMERCIAL SERVICE COMPANY, Inc.	664442	-	23	-
Elsenhout		Pearl	Elsenhout, John A.	664605	-	25	-
Elspire		Gerold (Gis)	H. Thausheles Finance Co.	664818	-	30	-
Elshbury		Katharine	E. Elshbury, James William	664929	-	30	-
Elliott		Robert E.	Elliott, Kathryn A.	665288	Sept	2	-
Elliott		Lorraine	Elliott, Robert P.	665111	-	2	-
Escalado Inc.			Yavalon U.S. Spec	665285	-	8	-
Ellingson, Guy, et al		Alan	C. Seattle Bonded Collections Inc.	665352	-	9	-
Escalado, Inc, et al			First Park Inc.	665672	-	14	-
Elliott		George	L. Columbia Occulana Corp.	666300	-	27	-
Elks Benevolent & Protective Order of Elks No. 318			Commercial Service Co. Inc.	640942	Oct	5	-
Elmido Inn Management Corp et al			Equitable Life Assurance Society of U.S.	667013	-	7	-
Elmido Inn Management Co. Inc, et al			Zapata, Guillermo	667303	-	13	-
Ellison		Reyn	L. Ellison, Iva M.	667631	-	19	-
Elite Shade & Linoleum Co. et al			Equitable Savings & Loan Assoc.	667601	-	19	-
"		"	"	667602	-	19	-
"		"	"	667603	-	19	-
"		"	"	667604	-	19	-
"		"	"	667605	-	19	-

GENERAL INDEX - DEFENDANT - SUPERIOR COURT, KING COUNTY, WASH.

DEFENDANT	GIVEN NAME	PLAINTIFF	NUMBER OF CAUSE	DATE OF FILING
	A B C D E F G H I J K L M N O P Q R S T U V W X Y Z			Month Day Year
White House & Furniture Co. et al		Equitable Savings Loan Assoc	667606	Oct 19 1966
" "	" "	" "	667607	- 19 -
" "	" "	" "	667608	- 19 -
" "	" "	" "	667609	- 19 -
" "	" "	" "	667610	- 19 -
" "	" "	" "	667611	- 19 -
" "	" "	" "	667612	- 19 -
" "	" "	" "	667613	- 19 -
" "	" "	" "	667614	- 19 -
" "	" "	" "	667615	- 19 -
" "	" "	" "	667616	- 19 -
" "	" "	" "	667617	- 19 -
" "	" "	" "	667618	- 19 -
" "	" "	" "	667619	- 19 -
" "	" "	" "	667620	- 19 -
" "	" "	" "	667621	- 19 -
" "	" "	" "	667622	- 19 -
" "	" "	" "	667623	- 19 -
Ellis et al	(Rita) Orin	" "	667624	- 19 -
Eldred	Raymond G.	Eldred, Stella	667725	- 25 -
Elmerco, Inc.		Penon Wax Works	667992	- 26 -
Elfrank	Fred	Federal Finance Co. Inc.	668012	- 26 -
Elm, David		Elm, Linda L.	668024	- 28 -
El Paso Inn Management Co. Inc.		Lovace, Lou et al	668242	- 31 -
Elliott et al (Janet)	Robert H.	Federal Finance Co. Inc.	668271	Nov 1 -
Elwood, et al (Delvina)	Thomas	Malcolm, John M., et al	668402	- 2 -
Ellis (adm'tg) (Donald)	John	Ellis, Beverly	668475	- 3 -
Ellison, et al	John	Theodora B. Ramsey, John III	668810	- 7 -
Elta Verde - Dandelion	JARR, DEEN	A. Jackson, et al	669045	- 15 -
Ellis		Washington Credit, Inc	669113	- 16 -
Ellis, et al, et al.	Henry	Walter A. Ellis, Barbara	669405	- 21 -
Elliott, Mary		Courten, Kearsall, Jane	669888	- 30 -
Ellis, et al, et al	for	J. L. Elliott, Roger C.	670195	Dec 6 -
Ellis		R. Peter, et al et al, King Co.	670579	- 12 -
Elzing, et al	David (Hazel)	Thomas W. Ellis, Annad.	670683	- 13 -
Eldred, (Jeanette)		Wash. Credit Inc.	670795	- 15 -
Elliott et al, et al	London (E. Dolores)	Woy A. Eldred, Anna J.	670815	- 15 -
Elliott, George		William G. Collins, Edward.	670818	- 15 -
Ellison, et al, et al	Benjamin (Pens)	J. Rame, Naomi A.	670959	- 20 -
Elliott, et al		T. Columbia Acceptance Corp.	671065	- 21 -
Elliott, et al		A. American Discount Corp.	671244	- 27 -
Elliott, et al		L. Elliott Laviera H.	671314	- 28 -
Elliott, et al		R. Elliott, et al	671524	Jan 3 1967
Electra Kitchenware Inc. et al		Martin, Kirby C.	671736	- 6 -
Ellis, et al	Dorothy	N. Wash State	671962	- 10 -
Elliott, et al (add'l)	Virgil	Morris, William A.	672876	- 10 -
Elzy	Ronald	M. Elzy, et al	672873	- 12 -
Ezabelle	et al	B. Salagot, et al	673157	- 12 -
Electro-Chrome Co. Inc. et al		Asho, et al Inc	673313	- 17 -
Ellsworth et al	(Louisa) Robert	L. Primoe, Patricia L.	673321	- 17 -
Ellenwood, et al	William	Ramy, John L.	673542	- 20 -

GENERAL INDEX - DEFENDANT - SUPERIOR COURT, KING COUNTY, WASH.

DEFENDANT	GIVEN NAME	PLAINTIFF	NUMBER OF CAUSE	DATE OF FILING		
				Month	Day	Year
ELicker et al	Margorie	Cougar Mountain Assoc.	672946	Jan	26	1967
Electro Development Corp.	GARN. DEFOT.	Allan, Leslie L.	670286	Feb	17	-
E. J. Maloney, Ltd	GARN. DEFOT.	Washington Credit Inc.	666152	-	21	-
Ellis adm'trix, (Donald R.)	Meredith P.	Byrdson, Maurin, et al, gelton	674732	-	28	-
Elliott	Virgil E.	Elliott, Alia	674740	Mar	1	-
Ellison, et al, et al	E.	White, Ruth M.	674872	-	2	-
Empire et al	H.	McInerney, E. D.	675342	-	10	-
Elmer, Anna	J.	Edred, Roy L.	675394	-	13	-
Electric Kitchens Inc.		Woodruff, H. C. trustee,	675405	-	14	-
Elder, et al, et al		Board of trustees of the Retail Clerks Union, et al	675412	-	14	-
Elve, et al, et al	George	American Oil Add'l Corp.	675687	-	17	-
Elva et al Development Co., et al		Jones, Thomas R. S/Gen	676265	-	28	-
Elvender Church of Christ Scientist, et al		Campanis Bank for Savings in Coll of W. Y.	676285	-	29	-
Elka Club	GARN. DEFOT.	Allen, Mary	661993	-	28	-
Ellis, et al, et al	John (Stella)	D. Equitable Savings & Loan Assoc	676360	-	29	-
Electro Development Corp	GARN. DEFOT.	Seattle Trust National Bank	676333	-	29	-
Electro Development Corp, Employees Credit Union	GARN. DEFOT.	"	676333	-	29	-
Elwood, et al, et al	Thomas	Malcom, John, et al	676501	-	31	-
Elston	Shelma L	Elston, William J	676540	-	31	-
Electric Kitchens Inc.		Carano, George, et al	676553	-	31	-
Elm	James	Elm, et al	676568	April	6	-
Elmo Seattle Lodge #92		Dependable Building Maintenance Co Inc	677248	-	13	-
Elmer Schmidt Construction Co., et al	James	Woodruff, H. C. trustee	677680	-	20	-
Elmer, et al, et al	(Janette), William C.	Spague, Arny M. gelton	678252	-	24	-
Elmer	Patricia	A. Ellison, Edward V. Jr.	678296	May	1	-
Elliot et al et al	Willie	Davis, A. E. et al	678433	-	3	-
Ellis	Robert K.	Ellis, Arlene F.	679481	-	19	-
Ellis Corporation, et al		State Farm Life Ins Co	679782	-	25	-
Ellis Truck Co., et al		State Farm Life Ins Co	679782	-	25	-
Elmott	Donald	W. Elliott, Dale M.	679812	-	25	-
Elliott	Anna	J. Water District #108	680186	Jun	2	-
Elijah	Allen	E. Elijah, Eleanor F.	680574	-	9	-
Elliott	Naomi	Elliott, Ernest	680588	-	9	-
Edna, et al, et al	Fred	National Public Service Ins Co.	680628	-	12	-
Ellison	Beth	H. Ellison, Joseph W	680712	-	13	-
Ellis		C. Ellis, Joan L.	680907	-	15	-
Elliott, et al	George	T. Amundson or Geo King, Inc	680910	-	15	-
Elite Made - Lumber Co. Inc.		Garn. Defot. W. Elmer + Development Co	671173	-	15	-
Elite Tool - Lumber Co. Inc.		Tom, Jeanne	681020	-	16	-
Elmer, et al	James (Leona)	B. Curman, Alden H. d/b/a	681050	-	16	-
Electric Motor, et al		Holme Electric Co	681399	-	23	-
Elliott, et al, et al	M	D. Kloppenberg, Howard S.	681475	-	26	-
Elliott, et al	Doan	W. Kloppenberg, Howard S.	681475	-	26	-
Ellis	Jacqueline	H. Ellis, J. Torrance	681572	-	27	-
Emberg	Karl	M. Emberg, Ruth E.	681901	-	30	-
Elliott, et al	George	Coffey, Patrick W.	682159	Jul	7	-
Elgin Lease Corp.	et al	Bailey, Oscar	682260	-	10	-
Ellis et al	C	B. V. Brought, Phillip K.	682388	-	12	-
Elliott	John	H. Elliott, Ernestine	682607	-	14	-
Elderkin et al	(Loretta) Robert	E. Amundson, Rod M. et al	682637	-	14	-



# GENERAL INDEX - DEFENDANT - SUPERIOR COURT, KING COUNTY, WASH.

DEFENDANT	GIVEN NAME		PLAINTIFF	NUMBER OF CAUSE	DATE OF FILING		
	ABCD EFGH	I J KLMNOPQRSTUVWXYZ			Month	Day	Year
Eldested etv dka		Virgil	Central Parking Service inc	682871	July	19	1967
Ellis		Marcia	Ellis state	683058	-	24	-
Ellis et al		William	Waples, Jeanne	683429	-	28	-
Ellis, et al	Alfred		Helm, John R. et al	683585	Aug	1	-
Elliott		John	Elliott, Connie L.	683656	-	2	-
Esberry	Bar	(Betty)	N.W. Ansel & Adjutant	683721	-	4	-
Evans, et al, d/b/a		Kenneth (Roubin)	Smith, Paul et al	683894	-	7	-
Ellis	Earl		Ellis, Linda L.	684041	-	9	-
Elder, et al	Frank		Collector Bureau Inc.	684297	-	14	-
Eliason		Margann	Eliason, Lloyd R.	685232	-	29	-
Eliason		Nita	Eliason, Barbara M.	685317	-	31	-
Ellsworth, d/b/a		Ward	Pedersen, Leonard G. et al	685440	Sept	1	-
Ellsworth Home Modernization Specialist, et al			Pederson, Leonard S. et al	685440	-	1	-
Electronic Technology Corp d/b/a			Howe, Peter S.	685686	-	7	-
Ellis, et al et al		William	Associated Coverage Co	685809	-	8	-
Elliott		Samuel	Elliott, Pauline	685931	-	11	-
Ellis	David		Ellis, Emma E.	685976	-	12	-
Elam, et al	Hugh		King County Credit Men Inc.	684425	-	12	-
Eliason	Byron		Eliason, Joe M.	686215	-	14	-
Electrical Products, inc., et al			Washington Federal Savings & Loan Assoc. of Seattle	686555	-	20	-
Ellis	Carole		Ellis, Michael N.	686605	-	21	-
Ellis		John	Ellis, Patricia	686644	-	21	-
Elliott		Marvin	Elliott, Alta K.	686830	-	25	-
Ellis, et al	Carl (Jeanine)		Loogans, Robert A. et al d/b/a	687017	-	27	-
Elliott	John		Elliott, Marv M.	688173	Oct	16	-
Ellis, et al		Robert	Copson Associates, Inc.	688590	-	23	-
Ellingsborg, et al, et al	Ethel		Konrath, William F. et al	688862	-	26	-
Flwell	Bonita		Flwell, Timothy P.	689233	Nov	2	-
Ellinger, et al et al	Daniel (Francis)		Kodama, Fred E.	689566	-	8	-
Ellinger, et al	Michael		Kodama, Fred E.	689566	-	8	-
Ellis, et al, et al	Stanley		Kummerfeldt, Melvin W.	689642	-	9	-
Elfering	Richard		Elfering, Mary Ann	689755	-	13	-
Elliott	Lorraine		Elliott, Robert J.	690111	-	16	-
Elmer	F.		George, D.D.	690192	-	17	-
Electrical Products Consolidated, et al			Flanding, James J. et al	687704	-	27	-
Electronic Technology Corp et al	Oliver		Brundage, Alexander W. et al	656296	-	27	-
Elliott, et al			Kruger, Harold M. et al	690593	-	28	-
Elite Shade & Finoleum Co, et al	John		Metropolitan Fed. Sav & Loan Assoc.	690664	-	28	-
Ellis, et al			Nichols, James W.	690816	-	30	-
Else	Carolyn		Else, Floyd W.	690855	-	30	-
Elite Carpet & Furnishings Co. et al			First Savings & Loan Assoc.	691230	Dec	6	-
Elrod, et al, et al	Frank		H. Kordahl, Paul C. et al	688637	-	7	-
Elliott, et al	Harold		Walker, Jacqueline M. et al	691465	-	11	-
Elliott		Ralph	Elliott, et al	691594	-	13	-
Ellis, et al	Clyde		Nedlinger, Al et al	691657	-	14	-
Elverum et al	Emil		Donald, Sons Inc.	691708	-	15	-
Elam	Linda		Elam, David N.	692037	-	21	-
Elkins, et al	George		Northrup, Janne	692401	Jan	2	1968
Elliott, et al	Johnny		Amstrong Contracting - Luchter, S.	692691	-	11	-
Evell, et al, et al (Bonita)	Timothy		Central Savings Bank in the City of New York	692792	-	15	-

# GENERAL INDEX - DEFENDANT - SUPERIOR COURT, KING COUNTY, WASH.

DEFENDANT	GIVEN NAME	PLAINTIFF	NUMBER OF CAUSE	DATE OF FILING		
				Month	Day	Year
Eldey, Guy	James	J. Foley, Maria	693255	Jan	20	1968
Eller, Guy	George	Forbes, Walter E.	693296	-	31	-
Elmgren, Guy	Cecil (Jackie)	Great Acoustics Corporation	693453	Feb	6	-
Ellis, Guy	Clarence (Cinnelle)	AAC Corporation	693493	-	7	-
Ellis, Guy, et al.		D. Moore, Lee Young, Inc.	693742	-	14	-
Ellis Co. Inc. et al.	James	W. Holt, Richard C.	693754	-	15	-
Elkins, Guy	George	GARN. DEF. Washington Credit Men, Inc.	688910	-	21	-
Elkison, Guy et al.	Male	Lores, James Guy	691036	-	23	-
Elkison, Guy	George	E. Lund, Lund Mutual Savings Bank	694164	-	29	-
Elkington, Guy et al.		G. Johnson, Kenneth J.	694241	Mar	1	-
Elks Builders Assoc. Inc. et al.		Loholt, Kay A. et al.	694615	-	14	-
Ellsworth, Guy et al.	Ward	Jederson, Leonard E. et al.	694618	-	14	-
Ellsworth Home Modernization Specialist, et al.		Jederson, Leonard E. et al.	694618	-	14	-
Electronic Technology Corp.		Nat. of Wash., Dept. of Labor & Industries	694808	-	20	-
Elmer, et al.		Nat. Credit Corporation, Inc.	695182	-	29	-
Elmer Co.	Henry	GARN. DEF. W. Household Finance Co. of Seattle	695244	Apr	1	-
Elmeridge	John	J. Monroe, Richard W. et al.	695314	-	3	-
Elmer Corp. et al.	John	Butt, Charles W. et al.	695321	-	3	-
Elmer Corp. et al.	Irene	Lawrence, William B. et al.	695334	-	3	-
Elite Made + Linoform Co.		Alan Acoustics Corp.	695355	-	3	-
Elkison, Guy et al.		Alan Acoustics Corp.	695355	-	3	-
Elkison, Guy et al.		Wellman's Health, Security Trust of Wash.	695407	-	5	-
Elmer, et al.	M	J. Strom, Helen	695517	-	9	-
Elmer, et al.	Carl, Roger	W. Strom, Helen	695517	-	9	-
Elmer, et al.	Carl	W. Seattle Hardware Union No 32	695818	-	18	-
Elmer, et al.	George	E. U.S. Chemical + Plastics	695896	-	22	-
Elmer, et al.	Uma	U.S. Chemical + Plastics	695896	-	22	-
Elmer, et al.	John	F. Teac, William S.	665338	-	19	-
Elmer, et al.	Harold (Ellen)	L. Washington Credit Inc.	696206	May	1	-
Elmer, et al.		GARN. DEF. J. Hamare, Mary Lou	696240	-	2	-
Elmer, et al.		Hanson, Mary Lou	696240	-	2	-
Elmer, et al.		Equitable Life Insurance Society of the U.S.	696677	-	15	-
Elmer, et al.		Associates Mercantile Corp.	696770	-	17	-
Elmer, et al.		Cowan, Richard	696862	-	22	-
Elmer, et al.		Harvard, Arthur et al.	696960	-	24	-
Elmer, et al.	Minnie	Northwest Suburban Sewer Dist	696976	-	24	-
Elmer, et al.	GARN. DEF. Sid	Financial Commerce, Inc.	696783	-	27	-
Elmer, et al.		White, William J. et al.	697149	-	31	-
Elmer, et al.		Behm, Raymond E. et al.	697322	Jun	6	-
Elmer, et al.		H. Z. Steiner Corp., Inc.	697526	-	12	-
Elmer, et al.		Marshall, Alvin B.	697598	-	14	-
Elmer, et al.		Strom, D. Markham, William C. et al.	697607	-	14	-
Elmer, et al.		GARN. DEF. J. Murall, Barry H.	697644	-	17	-
Elmer, et al.		GARN. DEF. Washington Credit Inc.	684370	-	26	-
Elmer, et al.		GARN. DEF. Washington Credit Inc.	684370	-	26	-
Elmer, et al.	London	J. Allison, Richard H.	698067	-	28	-
Elmer, et al.	(Christ) Jon	A. Cole Collection Co. Inc.	698388	Jul	11	-
Elmer, et al.	Investment Co	G. L. Home Furnishings Inc.	698471	-	15	-
Elmer, et al.	Bonnie (Ellen)	J. Kamens Bank for Savings in New York	698426	-	14	-
Elmer, et al.		O. Travel Age Touring Inc.	698719	-	19	-

# GENERAL INDEX - DEFENDANT - SUPERIOR COURT, KING COUNTY, WASH.

DEFENDANT	GIVEN NAME		PLAINTIFF	NUMBER OF CAUSE	DATE OF FILING Month Day Year
	ABCD EFGH	I J KLMNOP QRSTUVWXYZ			
Elliott, et al		Ken	L. Rensal, David	698945	July 26 1968
Elaberry, et al	Bert		F. M. Gaffey, W. J. aka	698964	- 26 -
Ellis, et al			O. Travel Age Touring, Inc.	693742	Aug 15 -
Electro Development Corp.		J	GARN. DEFDT. United Collection Service Inc.	699958	- 28 -
Elkins		Hugh	Credit Bureaus of Ephrata - Grunow, Inc.	699976	- 28 -
Ellerbrunnen, et al			Adelind, Ivan et al aka	700312	Sep 9 -
Ellard, et al		William	N. W. Audit - City Co	700428	- 11 -
Elshorn, et al		David	J. Valley's et al	700451	- 12 -
Electronic Systems Development, Inc.			Lendon & Maxwell, Inc.	700497	- 13 -
Erwig, et al		John	(Tenn) W. Hill, L. Presley	700661	- 18 -
Elliott, et al	Craig		C. Seattle Country Day School	701407	Oct 8 -
Ekun, et al		(Julia) O	West Valley Associates Inc.	701397	- 8 -
* Elmore, et al	Burdette (Eugene)		K. Rauda, Francis P. et al	701504	- 10 -
Elite Shade & Linoleum Co.			Wolfe, Robert T. et al	701574	- 10 -
Eliza Island Development Co, et al			Stone, Wilford C. et al	701733	- 17 -
El Nido Inn Management Co. Inc. et al			Tribe - Art Shipways, Inc.	701732	- 17 -
Elkerton, et al		Madeline	Southeast Suburban Sewer District	701938	- 23 -
Elshorn, et al		David	(Violet) D. Lucky Horse Inc.	701999	- 24 -
Ellingson, et al		Calvin	D. Washington Mutual Savings Bank	702117	- 27 -
Elite Shade & Linoleum Co, et al			Carlson Mortgage Co. Inc.	702438	Nov 6 -
Elliott Inc, et al		Harry	Beatty, Louis E	702533	- 8 -
Electric City, City of			GARN. DEFDT. P.A.R.A. Inc.	617471	- 13 -
Elshorn, et al		Bert (Betty)	E. Clemens, Richard T. et al	702684	- 14 -
Eldred, et al			Virginia Arvey, Maurice J. et al	702748	- 18 -
Elite Insurance Co, et al			Lew Wing Ott	703198	Dec 2 -
Ellington, et al		Mary	E. Steinbach Walter P.	703413	- 9 -
Ekens, et al		George	City of Seattle	703535	- 11 -
Electronic Technology Corp. et al			Northwest Mortgage Inc.	696298	- 16 -
Eastgate Northwest Inc, et al			Northwest Mortgage Inc.	696298	- 16 -
Ellis et al		Leland	GARN. DEFDT. R. White & Grace A. aka	704032	Jan 2 1969
Elder et al		Patricia	Seattle School District #1	704099	- 3 -
ELS, et al		(Dorothy)	Warren Wallace, Weldon et al	692820	- 3 -
Ellvith, et al		M	H. Ottenson, Teresa et al	704166	- 7 -
Ellvith, et al		(Rose) Roger	W. Ottenson, Teresa et al	704166	- 7 -
Elward		Leo	Commercial Credit Corp.	704583	- 17 -
Ellis, et al		John	D. Duncraft, Richard et al	704637	- 21 -
El Rancho Restaurant			GARN. DEFDT. Nordstrom's - Northgate Inc, et al	704935	- 29 -
Elliott et al		Henry	Jaeger, John A.	704972	- 30 -
Elliott, et al		John	H. Jaeger, John A.	704972	- 30 -
Eswick, et al		Linda (Joanna)	Association Collectors Inc.	705134	Feb 6 -
Eswick Construction, Inc. et al			Association Collectors Inc.	705184	- 6 -
Espe, et al		Marrin	Carlton, Mason et al	705260	- 7 -
Electra Craft Inc et al			Association Collectors Inc.	705277	- 7 -
Electro Development Corp. et al			Buchanan Johnson & Associates Inc.	705581	- 17 -
Elliott, et al		Robert	H. Boston Old Colony Ins Co, et al	705812	- 24 -
Elle, et al		(Bessie)	D. Commercial Service Co. Inc.	705834	- 25 -
Ellefitt et al		Richard	A. Commercial Service Co.	706093	Mar 4 -
Elder, et al		(Catharine)	E. Kincaid First Federal Svc & Loan	706254	- 7 -
Eldridge et al		John	R. Brookland Investments, Inc.	706418	- 12 -
Elwell & Company Inc. J. et al.			Stokken, Louis T.	706675	- 18 -

77777

# GENERAL INDEX - DEFENDANT - SUPERIOR COURT, KING COUNTY, WASH.

DEFENDANT	GIVEN NAME	PLAINTIFF	NUMBER OF CAUSE	DATE OF FILING		
				Month	Day	Year
<b>EI</b>						
Spinous Investment Co	etal	Miller, Gary M etno dba	706776	Jan	19	1965
Electric Contractor, Inc	etal	Miller, Gary M etno dba	706776	-	19	-
Elision Star (alias)	William R	McCarty, Gerald J	706782	-	20	-
Ellie etal	James	R Hambro, Erasma	706834	-	20	-
Elshury etal Bent		Necker, Roger L	707024	-	26	-
El Nido Inn, etno		Victor Comptometer Corp.	707029	-	26	-
Ellie and dris	Megan (Margaret)	Northwest Audits Adjustment Co.	707054	-	27	-
Elleby etal etal	Robert M	Rayley, Betty	707166	-	31	-
Ellebut etal etno Condon (E)		Jules, Octave	707189	-	31	-
Elker, etal	Teroy	Keremann, Karl	707225	Apr	1	-
Elshury etal David		Kraker, Roger J	707251	-	2	-
Ellest, etal	Patric	City of Kirkland	707297	-	2	-
Ellemanho Restaurant		Cruise, Patricia S.	617093	-	4	-
Elks Lodge (Kirkland)		do	617093	-	4	-
El Sauchy, Inc etal		do	617093	-	4	-
Electronic Technology Corp etal		Howe, Peter S.	707393	-	4	-
Elshury etal etal		Reliance Building Workers Union	707668	-	11	-
Elshury etal etal David		Handy's Frozen Steaks, Inc	707784	-	15	-
Elleson, etal Donald		J. Johnson, Stanley M. etal	708048	-	22	-
Elleson, etal etal		State Credit Union, Inc	708277	-	28	-
Elleson, etal etal		Browning, Jerry etal	708337	-	29	-
Ellie, etal etal		Syracuse Paper Supply Co.	708580	May	6	-
Elliot, etal etal	Gilbert	J Household Finance Corp.	708617	-	6	-
Electric Transmission Line		Yardley, Andrew W.	708748	-	9	-
Elle etal	Kenneth (Mabel)	Fidelity Finance Co.	708970	-	15	-
Elite Insurance Co	etno	Mathewson Casareddy	709033	-	16	-
Elshury etal etal David	Richard A	Com and Service Co, Inc	709111	-	20	-
Elshury etal etal	(Clyde)	East Mortgage & Investment Co.	709313	-	26	-
Elshury etal etal	(Lora) Roger	Western Collections Inc	709513	June	2	-
Elshury etal etal		Association Collectors Inc	709624	-	4	-
Elcott etal etal	Mary	Household Finance Corp.	709670	-	5	-
Elshury etal etal		Mathews Administrators Inc	709828	-	10	-
Elshury etal etal		Seattle First National Bank	709930	-	11	-
Elshury etal etal	Margaret	Western Collections Inc	709950	-	12	-
Elshury etal etal		Korea Insurance Co of America	709946	-	12	-
Elshury etal etal		Holman, Jane C	709961	-	12	-
Elshury etal etal		Schweizer, Priscilla	710432	-	24	-
Elshury etal etal Brian		Jurgensen, Robert C. etal	710426	-	24	-
Elshury etal etal	Laveria	Turner, Paul, etal	710540	-	26	-
Elshury etal etal		Winton & Phillips Co.	710802	July	3	-
Elshury etal etal etal		B & S Septic Tank Service	710872	-	8	-
Elshury etal etal		McMillan, John etno dba	710900	-	9	-
Elshury etal etal etal	Madeline	Prudential Mutual Savings Bank	710912	-	9	-
Elshury etal etal etal	Laurie	W J Rozojin, Peter J.	710993	-	9	-
Elshury etal etal etal		Edual Way Sewer Dist # 210	711109	-	14	-
Electric Motors		Commercial Service Co, Inc	711282	-	22	-
Elshury etal etal		Wattinhouse Electric Supply	710515	-	29	-
Elshury etal etal etal	Rolf	Chadwick Michael	711998	Aug	10	-
Elshury etal etal etal		Household Acceptance Corp of Wash	712198	-	12	-

# GENERAL INDEX - DEFENDANT - SUPERIOR COURT, KING COUNTY, WASH.

DEFENDANT	GIVEN NAME		PLAINTIFF	NUMBER OF CAUSE	DATE OF FILING
	ABCD EFGH	I J KLMNOP QRSTUVWXYZ			
Ehligson et al		Eniar	A. Deatherlee, Alfred et al	712223	Aug 12 1969
Ekins, et al	(Mrs) George (Dolores)		United Collection Service, Inc	712337	- 14 -
Electrical Products Consolidated, et al			Prudential Insurance Co of America	712466	- 18 -
Ellsworth, et al	(Monte)	Warnerly J	De Braganca, Maynard M et al	712577	- 30 -
Elster et al	Clark (Rosa)		King County	712644	- 21 -
Elmer et al	(Helen)	Paul M	" "	712644	- 21 -
Elmer et al		(Mary) Kenneth E	" "	712644	- 21 -
Eliza Development Co et al		Joseph (Yvonne) E	Jones, Emma R	712913	- 25 -
Elliott et al			Housing Authority of Seattle	713041	Sept 3 -
Electric Home Service et al			Charles R. Watts Co	713165	- 5 -
Elite Insurance Co			Beames, Christine M	713217	- 8 -
Elliott		Richard	Greene, Dorothy J	713491	- 15 -
Elve Company, et al			Holmes, Joseph H et al	713521	- 15 -
Elts, et al	James		Jayne, John B	713541	- 16 -
Elis, et al	Harold (Charlotte)		Howard, Harry E et al	713601	- 17 -
Elis, et al			Cross Seattle Properties Inc	713780	- 22 -
Electronic Technology Corp	James		R. West, David A	713846	- 23 -
Electric Contractors, Inc et al			D & S Painters Inc	713917	- 24 -
Elton, et al		William	Passert, John et al	714072	- 29 -
Eller, et al	Jack		Witchinson, D.L. et al	714093	- 29 -
Elliott	Bruce (Elizabeth)		Washington Central Credit Union	714190	Oct 1 -
Elmore, et al	Delores		Wolk, Ralph A. et al	714210	- 2 -
Elis, et al	James		Willy, James B	714321	- 6 -
Elm, et al		Wilma	M. Vissel, Sandy L	714422	- 8 -
Elis, et al	James		R. Vossach, Patricia et al	714566	- 10 -
Elis et al	John		W. Holman, Thomas E et al	714717	- 14 -
Electronic Technology Corp			Plastoid	714910	- 21 -
Electronic Technology Corp			R.C. Shure #114	714986	- 22 -
Electronic Technology Corp			Wickor Cable Corp	714992	- 22 -
Elves, et al	George (Joy)		City of Kirkland	715226	Nov 5 -
Elves et al	(Wilma) James		do	715526	- 5 -
Elton et al	Harold		E. Spradling, Jerry S	715899	- 14 -
Electromech Industries et al			Steege, Carbon, Inc	716026	- 18 -
Elma School District #68			Commercial Service Co Inc	704435	- 24 -
Elliott et al	(Margaret) Ron		Owens, John J. et al	712119	Dec 2 -
Elsie, et al	Clark		Skullered, Stephen	694376	- 3 -
Elliott, et al	Barbara E		Household Finance Corp	716529	- 3 -
Elliott	Stanley Gordon		L. Washington Credit Inc	716572	- 3 -
Ellingworth, et al		Rendall	Newman, Nicholas C et al	716773	- 9 -
Elliott Bay Lumber Co et al			United Pacific Insurance Co.	710702	- 10 -
Ellis et al	James		Wetmore, Jeri	716164	- 12 -
Ellis et al	Priscilla Helen		A. Callap, Construction Co Inc	717055	- 16 -
Ellinger	Manuel (Francis) Michael		Kodama, Fred E	717123	- 17 -
Ellingson		Aven	J. Gaba, Cecil J	717681	Jan 6 1970
Ellis, et al	Henry		Gannucello, Giovanni et al	717769	- 8 -
Electronic Systems Development Inc			Lannon & Newell Inc	718271	- 21 -
Elfers et al	John		Commercial Service Co Inc	718193	- 20 -
Elery et al	Henry		Stotny, Gertrude	718386	- 23 -
Elkins, et al	E		Supco Corp	707265	- 29 -
Ellsworth, et al	(Heather)	Robert E	Dealm, Victor et al	718744	Feb 2 -

1119

# GENERAL INDEX - DEFENDANT - SUPERIOR COURT, KING COUNTY, WASH.

DEFENDANT	GIVEN NAME		PLAINTIFF	NUMBER OF CAUSE	DATE OF FILING		
	ABCD EFGH	I J KLMNOP QRSTUVWXYZ			Month	Day	Year
<b>El</b> <sup>et al</sup> <i>Elis et al</i> <sup>Don</sup>			Evergreen Tractor Inc	718526	Feb	4	1976
Ellis <sup>Miriam</sup> <i>Ellis Miriam</i> <sup>Interpresio Inc et al</sup>			do	718826	-	4	-
Elswick <sup>David</sup> <i>Elswick David</i> <sup>Ronald (Spence)</sup>		J	A H Cox + Co et al	718959	-	6	-
Elswick <sup>Construction Co et al</sup>			do	718959	-	6	-
Elliott <sup>same</sup>		Wally	Bray, Clifford D	719326	-	16	-
Elliott <sup>same</sup> <sup>David</sup>		O	King County Court Man Inc	719382	-	17	-
Elmer <sup>same</sup> <sup>George (Foy)</sup>		B	Washington Mutual Savings Bank	719445	-	18	-
Elmer <sup>same</sup> <sup>Donald</sup>		L	Commercial HS	719454	-	18	-
Elmerkin <sup>same</sup>		Kathleen Robert	E. Southwest Industrial Loan Soc	719630	-	24	-
Elmer <sup>same</sup>		Don	E. Household Finance Corp of Kent	720074	Mar	5	-
Elite <sup>Insurance Co et al</sup>			Civil Service Employees Assn	720177	-	6	-
Elliott <sup>same</sup> <sup>(Elliott)</sup>			Northwest Plumbing Inc	720287	-	10	-
Eli Lilly + Co.			Tornasi, Dennis P	720393	-	11	-
Eldredge <sup>same</sup> <sup>et al</sup>		J R	Hart, Yvonne	730634	-	17	-
Elliott <sup>same</sup> <sup>Land Co.</sup>			North Western Mortgage Investors	720229	-	17	-
Eico <sup>Enterprise, Inc</sup>			Kelly, Mable J	721904	April	14	-
Eller <sup>same</sup> <sup>Jack</sup>			J J Coleman + Sons Construction	721915	-	14	-
Ellenbung <sup>mechanical Contractor</sup>		JR	Payer Sound Power Light Co	722075	-	17	-
Else <sup>et al</sup> <sup>Mary</sup>		L	Kokane, Jerry	722302	-	23	-
Electric Development Corp		GARY DEPT.	Seattle Trust + Savings Bank	717125	-	23	-
Electrol <sup>Enterprise, Inc et al</sup>			Bryson Co.	722387	-	24	-
Elis <sup>same</sup> <sup>Eugene</sup>			London, Raymond T	722381	-	24	-
Electro Rents Inc			Stessa, Robert	722415	-	27	-
Elis <sup>same</sup> <sup>Charles</sup> <sup>Judis</sup>		R	STATE OF WASHINGTON	722411	-	27	-
Elder <sup>same</sup> <sup>Arthur</sup> <sup>Expellin</sup>			General Finance Corp.	722528	-	28	-
Eliguard <sup>same</sup> <sup>Canada</sup>		E	Smith, Robert C et al	716245	Mar	4	-
Elmer <sup>same</sup> <sup>et al</sup>		R	Stor, Eric et al	721981	-	8	-
Elmer <sup>same</sup> <sup>et al</sup>			Simmons, Alva G. et al	723042	-	11	-
Elmer <sup>same</sup> <sup>et al</sup>			Equal, Joseph et al	723232	-	14	-
Ellis <sup>same</sup> <sup>et al</sup>		W	Holman, Francis	723217	-	14	-
Elmer <sup>same</sup> <sup>et al</sup>			Vog, Eleanora	723296	-	15	-
Elmer <sup>same</sup> <sup>et al</sup>			Hillman, Doyle	723448	-	19	-
Elmer <sup>same</sup> <sup>et al</sup>			Cal Kent Wholesale Inc	713957	-	20	-
Elmer <sup>same</sup> <sup>et al</sup>		W	Egan, Margaret A	723603	May	22	-
Elmer <sup>same</sup> <sup>et al</sup>			Washington Mutual Savings Bank	723606	-	22	-
Elmer <sup>same</sup> <sup>et al</sup>			Whittaker, Doyle	712239	-	27	-
Elmer <sup>same</sup> <sup>et al</sup>			Kreiger, Elizabeth	723726	-	26	-
Elmer <sup>same</sup> <sup>et al</sup>			Chicago, Harold C Inc	723857	-	28	-
Elmer <sup>same</sup> <sup>et al</sup>			Pacific Water Works Co Inc	723200	June	2	-
Elmer <sup>same</sup> <sup>et al</sup>			do	723200	-	2	-
Elmer <sup>same</sup> <sup>et al</sup>		GARY DEPT.	Collection Bureau of San Jose	702402	-	3	-
Elmer <sup>same</sup> <sup>et al</sup>			Empire of Wash. Inc	714355	-	10	-
Elmer <sup>same</sup> <sup>et al</sup>			Atty, Harold L	724647	-	16	-
Elmer <sup>same</sup> <sup>et al</sup>			North West Bank	724653	-	16	-
Elmer <sup>same</sup> <sup>et al</sup>			Noller, Andrew	724664	-	17	-
Elmer <sup>same</sup> <sup>et al</sup>			Cascade Savings + Loan Assn	724681	-	17	-
Elmer <sup>same</sup> <sup>et al</sup>			Hart, H. C.	724763	-	18	-
Elmer <sup>same</sup> <sup>et al</sup>			Parsons, F. V.	724875	-	22	-
Elmer <sup>same</sup> <sup>et al</sup>			Trainer, Myrtle	724938	-	23	-
Elmer <sup>same</sup> <sup>et al</sup>			Elliott, Robert J. et al	724937	-	23	-

GENERAL INDEX -

**Defendant**

~~PLAINTIFF~~

SUPERIOR COURT, KING COUNTY, WASH.

**EL**

**Plaintiff**

PLAINTIFF	GIVEN NAME		DEFENDANT	NUMBER OF CAUSE	DATE OF FILING		
	ABOD EFGH	IJ KLMNOP QRSSTUVWXYZ			Month	Day	Year
Elliot, et al		Stanley E	COMMERCIAL SERVICE COMPANY, Inc	725921	July	14	1970
Elmer Construction Company			Veget Lumber Lumber Light Co	725947	-	14	-
Electronics I.V. et al			Excelsior Northwest Inc.	726052	-	17	-
Elmer, et al et al		Ker	Trust Fund Services Inc.	726079	-	20	-
Elmer's Sales et al			Sentinel Electric Co.	726084	-	20	-
Electric City Inc.			Dunphy, Leila aka	726116	July	20	-
Electronic Technology Corp et al			STATE OF WASHINGTON	726195	July	22	-
Elmer et al		Norman	Elmer Construction Co Inc	726566	-	28	-
Electromarine Sales Service et al			Nelson, John W.	726461	-	29	-
Electriccraft Stereo Centers et al			Hamilton Roy	726457	-	29	-
Elery Norma Paul		Paul	Farway - Insured - Clinton Inc	726335	-	30	-
Elegant et al		George (Jr)	Northwest Audio Adjustment Co.	726874	Aug	3	-
Elis, et al		Ker	Orchard, Stanley K	727051	-	13	-
Elis et al		Kano-Cirquin L	Val Vee Sewer Dist	727050	-	13	-
Elis et al		Cloria	Cooper, Larry R	727162	-	18	-
Ellwood et al, Bill			Canyon Mill Co.	727476	-	26	-
Ellsworth et al		Barry	Northwest Federal Savings Loan	727546	-	28	-
Elm et al		George	Anderson-Bell Electric Co	727635	Sept	1	-
Elm et al		George	Weston Catering, Inc	727728	-	2	-
Elmer et al et al		(Virginia) Verlein a	Northwestern Collection Service Inc	727855	-	4	-
Elmer et al et al			COMMERCIAL SERVICE COMPANY, Inc	727908	✓	8	✓
Electrical Connections, Inc.			Lukotke, William H et al	728140	-	14	-
Elmer, et al et al		Orrie Seller	Wapking, Arthur	728210	-	15	-
Elmer, et al et al		Randall H	Inc Finance Corp. of Lake City	728303	-	17	-
Electronic Systems Development, Inc			DOS Mortgage Corp	728429	-	22	-
Elis et al Arthur			Fletcher, Phyllis B	728525	-	23	-
Elmer Construction Company		RECEIVERSHIP	Fish, Mary	728905	Dec	2	70
Elmore, et al Edward		L	State Credit Association, Inc.	728972	-	2	-
Elmer et al Barbara Jack		E	A.A.A.A. Inc	729197	-	8	-
Elis, et al James		R	Old National Bank of Washington	729312	-	13	-
Elton, et al et al et al		Ray	Bekins Moving & Storage Company	729374	-	14	-
Electrocraft Stereo Centers, Inc. et al			Electronic Alarm Enterprises Inc.	729629	-	20	-
Electrocraft, Inc. et al			do	729629	-	20	-
Elite Insurance Co.			Crilly, Patrick J	729800	-	23	-
Elmer Helvarsson, Inc			Peer Lumber Inc	729989	-	28	-
Electrical Contractors et al			do	729988	-	28	-
Electric City, Inc			Coronet Manufacturing Co, Inc	730036	-	30	-
Elmer, et al George Jay		B.	Foresk, John E.	730131	Nov	2	-
Elmer, et al et al		William	Doerner, Clarence et al	730130	-	2	-
Elmer Business Shop et al			Ways Inn Inc	730296	-	6	-
Ellis et al Samuel			Northwest Administrators, Inc	714882	-	10	-
Ellis, et al James			Carte, Larry M.	703726	-	16	-
Elite Shading Solumon Co et al			William Viper & Co.	730964	-	17	-
Elle guard et al E et al			Sentinel Electric Co	730697	-	17	-
Elsworth, et al Elton Michael			Grummining, Leland et al	730725	-	17	-
Elmer et al et al			People National Bank	730198	-	18	-
Elmer Land Co Inc			Kirk, James L.	730157	-	20	-
Elsholtz, et al et al		W E	Northwest Commercial Co. aka	731064	-	24	-
Elsholtz, et al et al		W E	Northwest Instrument Co	731065	-	24	-
Electronic Security Systems, Inc			Klemann, Gary L	731230	Dec	1	-

~~Defendant~~  
**GENERAL INDEX - PLAINTIFF** - SUPERIOR COURT, KING COUNTY, WASH.

~~Plaintiff~~

**EL**

PLAINTIFF

GIVEN NAME

ARCD EFGH IJ KLMNOP QRSTUVWXYZ Second Initial

NUMBER OF CAUSE

DATE OF FILING  
Month Day Year

Election Commission Board of King County, et al  
 Elwak Land Co. Inc. et al  
 Galms, et al  
 Earl  
 Ellison et al et al. Evelyn  
 Ellis, et al David  
 Elcker et al Charles

London, William  
 Johnson, Gene  
 Goodsell, Vernon R.  
 Chadwick, Roy et al  
 Newark, Edwin J  
 GARN DEF. Hendrickson, John et al

731273 Dec 1 1970  
 731588 - 8 -  
 731850 - 15 -  
 732093 - 21 -  
 732209 - 23 -  
 727151 - 23 -



# GENERAL INDEX - DEFENDANT - SUPERIOR COURT, KING COUNTY, WASH.

DEFENDANT	GIVEN NAME		PLAINTIFF	NUMBER OF CAUSE	DATE OF FILING		
	ARCD EFGH	IJ KLMNOP QRSTUVWXYZ Second Initial			Month	Day	Year
Emerson	Bob.		H. Emerson Clara.	652327	Jan	7	1966
Emigh	Arthur		H. Emigh Tonda R.	652608	-	13	-
Emblaton		Leila	H. Emmer Rennie	652630	-	14	-
Emon & Ka	F Lorenza		H. Local Acceptance Co	652887	-	19	-
Emmanuel, et al		Sam	H. King Co.	653033	-	21	-
Emment et al		Reginald E	H. Kottross Margaret K.	653916	Feb	8	-
Emmanuel et al		(Winifred) Sam	H. Thom Kubra	653944	-	8	-
Empire Shipways et al			H. Pasquale Nicolette	654174	-	14	-
Empire Emblems et al			H. Nottger Jeanne	654914	-	25	-
Empire Emblems et al			H. Bell David	655372	Mar	7	-
Employers Surplus Lines Co., et al			H. Mac William, Juanita M.	656010	-	18	-
Emil et al	Harry	(Sylvia)	H. Ticeason Henry J.	656654	-	30	-
Emery		K	H. Emery M.S.	657905	Apr	21	-
Emery et al	Alma	Stewart J.	H. Rhodia Refrigeration Co.	658753	May	6	-
Emler		Phillip	H. Emiler Marlene R.	658994	-	12	-
Emard et al et al	Jary		E. Booth Charles E et al	659118	-	13	-
Emard et al et al	Jary		E. Bridge Abe	659130	-	13	-
Empire Builders Supply Inc.			H. Western Tile Contractors	634087	-	25	-
Emon		Lorraine	M. Emor Daniel J.	660251	Jun	6	-
Emerson, et al		(Keith) Louetta	R. Federal National Mortgage Assoc.	661638	-	30	-
Emil, et al	Unita		H. Mc Shernoy	665092	-	30	-
Emery, et al		Joan	H. Tammill Kenneth F.	661750	July	1	-
Emley		Ralph H.	H. Emley Sharon F.	662857	-	26	-
Emmett, et al (Mildred)		Kay H.	H. State of Washington	664774	Aug	29	-
Empire Construction Co.			H. Healdt Ethel P.	664269	Sept	6	-
Empire Investment Co., et al			H. Sundquist, R. H., et al	665685	-	15	-
Emley		Thomas L.	H. Emley Maryann	665770	-	16	-
Emmett, et al		Russell W.	H. Schlam John F.	665867	-	19	-
Employers Surplus Lines Inc. Co.		(add'l def't)	H. Amco Yellow Cab Inc.	663727	-	26	-
Empire Investment Inc., et al			H. Olsen Paula	666249	-	26	-
Employers Surplus Lines Inc. Co. (add'l def't)			H. Anderson, Sam	661547	-	26	-
Emerald Evergreen Co., et al			H. Commercial Service Co. Inc.	665514	-	27	-
Employers Surplus Lines Inc. Co. (add'l def't)			H. Freeman, Minerva	661548	-	29	-
Empire Builders Inc. et al			H. Warkins, & Sellic S.	667150	Oct	11	-
Empire Packing Co., et al			H. Smith & Schoch & Co.	669121	Nov	16	-
Emshwiler, et al		Paul (Mabel)	H. Wade, Robert T., et al	670506	Dec	9	-
Emberston		Peter	H. Emblaton Barbara J	670597	-	12	-
Employers Reinsurance Corp.			H. Dahl Donald A.	672247	Jan	16	1967
Emuck, et al et al		Linn	H. Hillborn Aircraft Co.	672332	-	17	-
Emerson, et al		Joan	H. King County Credit Men Inc	675063	Mar	7	-
Emor, et al et al		Daniel	H. National Bank of Commerce	675340	-	10	-
Emerson J. M. Deal, Inc. et al			H. Heisinger, Doris V.	675362	-	13	-
Emery		Allen	H. Emery Sharon A.	675885	-	21	-
Emerson et al	Salvin (Dorrie)	Michael	H. Kent Highlands Inc.	675966	-	22	-
Emerson, et al et al	(Paula)		H. Sexton, Leroy D.	676127	-	24	-
Emmanuel et al	(Winifred) Sam		H. Patzer, Chris A.	675737	-	27	-
Emerson		Ginda	H. Emerson, Dennis A.	677141	April	11	-
Emerson, et al et al	Benjamin		H. Commercial Service Co. Inc.	677350	-	14	-
Empire Builders Inc. et al			H. Otto, Barbara A.	678384	May	2	-
Emaroff et al		Karp	H. Brock, Daniel H. et al	678741	-	9	-

# GENERAL INDEX - DEFENDANT - SUPERIOR COURT, KING COUNTY, WASH.

DEFENDANT	GIVEN NAME		PLAINTIFF	NUMBER OF CAUSE	DATE OF FILING		
	ABCD EFGH	I J KLMNOP QRSTUVWXYZ			Month	Day	Year
<b>Employment Security Dept. et al.</b>			Burwell + Morford	679808	May	17	1967
Emery, et al.			R. Hueneke Richard	679757	-	24	-
Emerson, et al. Charles (Ladie)			North Shore Fabrics, Inc. v. Loan Assoc	679797	-	31	-
Employers Insurance Corp. et al			Ed - M - M	677445	Jan	15	-
Emmer, et al. Harry			E. Moon, Francis et al	681655	-	28	-
Emmerich, et al. Dr.			Ed. Subra Co	681946	Jul	5	-
<b>Emmett</b>			Peter v Emmett, Shirley A.	682593	-	14	-
Emel, et al. Ann Anita			Ors Jeanne	682717	-	18	-
Emerson, et al. Bill			D. Novak, Russell et al	684625	Aug	18	-
Empire Construction Co. Inc.			State of Wash, Dept of Labor + Industries	686689	Sep	22	-
Emmons, et al. (Maurice) Carl			Northwest Finance Co	687515	Oct	5	-
Emerick, et al. et al. Walter			Latte Trust Savings Bank	687547	Oct	5	-
Emico, Inc. et al.			J. A. Stafford Trucking	687739	-	20	-
Emerald Christmas Tree Co. et al.			Jagan, Harold et al	688669	-	24	-
Emery Air Freight Corp. et al.			Herby Corporation	687483	-	25	-
Empire Packing Co. Inc. et al.			Association Collidors Inc.	699108	-	31	-
Emardt Packing Co. Inc. et al.			Hathman, Kenneth	690107	Nov	16	-
Emmanuel, et al. et al. (Winifred) Sam			Cacule Printing Laboratories Inc.	690181	-	17	-
Emmerson, et al. Joseph (Leticia)			M. Dean Watson B. et al, et al	690524	-	27	-
Embacher, et al. Dyer			L. Embacher, Karl Jr.	691562	Dec	13	-
Emmons			L. Emmons, Forrest R.	692096	-	26	-
Emshwiller, et al. Paul			Hypothecary, Richard A. et al	692345	Jan	8	1968
Emvire, et al. et al.			Salbrauth + Co. Inc.	692704	-	11	-
Employers Comprehensive Liability Insurance Corp. et al.			Daphor, D. E.	693183	-	29	-
Empire Retirement Trust of Tektronix, Inc. et al.			Kennedy, Marshall et al	693597	Feb	9	-
Emanuel, et al. et al. (Doraldine) Mason			McKinstry Co.	693764	-	15	-
Emanuel Co. et al. Mason			McKinstry Co	693764	-	15	-
Emerald Christmas Tree Co. et al.			Woffloger, Janne	694909	Mar	22	-
Emigh et al. John			m. West Valley associates, Inc.	695555	April	10	-
Emigh et al. H.			B. " " " "	695555	-	-	-
Empire Builders, et al.			Buller, John H. Jr. et al et al	695792	-	17	-
Emmel, et al. Harry			S. Koppe, Charles et al	696303	May	2	-
Emerson D. M. Diesel			GARN DEFT. Dwyette, Louise M.	682184	-	27	-
Emerson D. M. Diesel, et al.			Debbie Marie Lashman Inc	677356	Jun	13	-
Emerson, et al. et al. Charles (Susan)			State Credit Association Inc.	697598	-	13	-
Employers Mutuals of Wausau, et al.			Jackson, Owen	697871	-	24	-
Emerson, et al. et al. David (Emie)			L. Woess South Ave Inc.	697994	-	26	-
Empire Homes, et al.			Security Savings + Loan Assoc.	698009	-	27	-
Empire Builders, Inc.			Pacific Northwest Collections Inc.	198165	Jul	2	-
Empire Builders, Inc. et al.			Pacific Northwest Collections Inc.	698184	-	2	-
Emil's Concrete Constr Co. et al.			Arnold, Claude	698446	-	12	-
<b>Emma P. Chadwick Memorial Home</b> GARN. DEFT.			Washington Credit Inc.	692243	-	23	-
Empire Motors Inc. et al.			Estell, Will E. Jr. et al	696654	Aug	30	-
Empire Distributing + Leasing Co. GARN. DEFT.			Deans, Andrew Co	700476	Aug	13	-
Empire Motors et al.			Estell, Will E. Jr. et al	696634	-	24	-
Empire Way Auto Wreckers, et al.			Continental Illinois Nat Bank + Trust Co	702213	Oct	30	-
Emil's Concrete Construction Co. et al.			Caplan Mortgage Co. Inc.	702428	Nov	6	-
Enter Lloyd			L. Davis, Christopher C.	702660	-	13	-
Employees Retirement Trust, et al.			Spartan + McLean Co	702666	-	14	-
Emergency Identification Service, Inc. et al.			Knobe, Minna	702910	-	21	-

# GENERAL INDEX - DEFENDANT - SUPERIOR COURT, KING COUNTY, WASH.

DEFENDANT	GIVEN NAME				PLAINTIFF	NUMBER OF CAUSE	DATE OF FILING		
	ABCD	EFGH	IJ	KLMNOPQRSTUVWXYZ			Month	Day	Year
Emergency Identification Service Inc. et al					Simpson, Paul	702911	Nov	21	1968
Emerson, et al (Barbara) Ewen					Boles South Avenue, Inc.	703676	Dec	17	-
Employees Association of Seattle First National Bank et al					Namant, Gordon W.	703761	-	17	-
Emerson, et al Dale					Cement Order Co et al	704346	Jan	10	1969
Emrich, et al et al Linn					State of Washington	704592	-	17	-
Emerson S. M. Kiesel, Inc. et al					Wiley, Rudy G.	705587	Feb	17	-
Enright, et al et al Hawlett					Morris, Allen	705963	-	27	-
Emerson				William H.	Crossroads Properties	706374	Mar	11	-
Emmons, et al Forrest				(Sharon) R	Acme Finance Co. Inc.	707032	-	26	-
Emerson, et al et al Joyce				Richard C.	State of Washington	707084	-	28	-
Emergency Exits, Inc. et al					Mechanical Contractors Inc.	707318	Apr	3	-
Emblace, et al et al Claude				A.	Nichols, M. Bernice	707602	-	10	-
Employees Association of the First National Bank et al					Damon, James D. et al	707701	-	14	-
Embassy Theater, et al					Great Film Distributors Inc. et al	708239	-	25	-
Employees Reinsurance Corp. et al					Cascade Insurance Co.	708466	May	2	-
Emmett, et al et al (Virginia) Robert O.					White, Richard E. et al	708557	-	6	-
Empire Motors Inc. et al					Nace McHugh, and LaBau Hayes, Inc.	708587	-	6	-
Empire Motors, Inc. et al					McQueen, Jesse et al	708588	-	6	-
Emmanuel (Winfred) Sam					Home Market Sales Co.	708826	-	12	-
Emery et al				Ed 7.	Joyce, B.K.	709709	June	5	-
Emery, et al et al Charles (Catherine)					Ed Peterson Construction Co.	710306	-	20	-
Emery, et al et al Carol				Ralph R.	Weyhaeusler Co.	710423	-	25	-
Employers Reinsurance Corp. et al					Lawco Contractors Inc.	710601	July	1	-
Emel John (Ruth) M.					Wilson, Paul D. et al	711042	-	11	-
Emery, et al et al (Dund) John				M.	Federal Way School Dist #210	711119	-	14	-
Emery Jr. et al Charlotte Thelwell				B.	" " " " " "	711119	-	14	-
Emerson et al et al Dale (Marlyn)					Hallerman, Donald F. et al	711574	-	25	-
Emrich et al (Lillian) Thomas D.					King County	712444	Aug	21	-
Emch Yellow Cab, Inc.					Yellow Cab Service, Inc.	712409	-	28	-
Emrich, et al et al Linn					Kolick, R.J.	713523	Sept	15	-
Emmal William B.					Emmal, Geneva, State of Wash et al	713572	-	16	-
Emmal et al (Edward) L.				J.	Kilburg, John et al	713935	-	24	-
Emery Byron M.					Fox, Laura	714363	Oct	7	-
Emerson, et al et al William H.					Courtesy Exec-U-Lene Inc.	714374	-	10	-
Emerson et al et al David (Ernie) L.					American Pool Supply Inc.	714737	-	15	-
Emerald Concrete Construction Inc. et al					Goodwin, Danell	714895	-	21	-
Emerald Christmas Tree Co. et al					Kirsch, Eugene J.	715832	Nov	13	-
Emerson B.M. Diesel, Inc. et al					Stendette, Joseph L.	715904	-	14	-
Employment Security Dept. of State of Wash.					Economy Construction Co. Inc.	716028	-	18	-
Employees Profit Sharing Trust et al					Smith, Robert C. et al	716245	-	24	-
Express Electrical Contractors Inc.					Main Office Machine	716428	Dec	1	-
Emerson et al et al David (Ernie) L.					Peter Bilder, Inc.	717392	-	22	-
Emerson et al et al David (Bobby) et al					Spake, Harry A. et al	717651	Jan	6	1970
Emerson et al et al David (Ernie) L.					St Regis Paper Co.	717662	-	6	-
Employees Group Insurance Co. et al					Freeman, Arthur P.	717945	-	13	-
Emerson et al et al David (Ernie) L.					Cheadle, Gordon H. et al	718038	-	15	-
Emerson et al et al et al Tom					Tranper, H. R. et al	718106	-	16	-
Emerson et al et al David (Ernie) L.					Western Elevator Corp.	718182	-	20	-
Emerson et al et al David (E.) L.					Spake, Charlotte	718237	-	20	-
Emerson Electric, Inc. et al					Palmer Electric Co.	718282	-	21	-
EMERSON James D.				D.	Seattle Community College	709217	Aug	19	1969

# GENERAL INDEX - DEFENDANT - SUPERIOR COURT, KING COUNTY, WASH.

DEFENDANT	GIVEN NAME		PLAINTIFF	NUMBER OF CAUSE	DATE OF FILING		
	ABCDEFGHIJ	KLMNOPQRSTUVWXYZ			Month	Day	Year
Emerson Electric	coal		White Electrical Distributors Inc	718866	Jun	30	1910
Emery et al		Phelia M	Western Collection, Inc	718876	Feb	4	-
Essex Knives	(Essex Knives)		C. Conwell, Brian	719129	-	11	-
Emerson et al David (Emmie)			Hammer Asphalt Paving Co.	719210	-	13	-
Esby et al Charles			Payer, Peter	719576	-	19	-
Emerson et al David (Emmie)			Town & Country Distributors Inc	719714	-	25	-
Emmie et al		Helgie	Langland Electric Inc	719791	-	26	-
Employment Security Board, of Wash, et al			Continental Electrical Dist Inc	720529	Nov	13	-
Emerson Electrical Contractors et al			State of Wash. Employment	720842	-	20	-
Emerson et al Dave			Trust Fund Services, Inc	721005	-	25	-
Emerson et al David			Custom Paint Co.	721336	-	31	-
Emmie et al et al		Wesley (Wesley)	Langland Electric Inc	721628	Apr	7	-
Emerson et al David			Universal Woodwork Corp.	721736	-	9	-
Employment Unlimited et al			Whitcomb Electric Contracting Co.	722175	-	21	-
Emil et al et al (Barbara)		John (John) (Barth)	Wilson, William R	722334	-	23	-
Emerson, et al David			J W J Inc	722618	-	30	-
Emerson, et al Emma (Emmie)			Seattle Granite & Concrete Pumping Inc	722648	-	30	-
Emmie Insurance Co	coal		Chicoma Inc	722634	-	30	-
Emerson et al et al			Anderson H & Co et al	722898	May	7	-
Emerson et al et al		Abba	Parsons Landscaping Inc	723120	-	12	-
Emerson et al David			Business Finance Co Inc	723583	-	20	-
Emerson et al		Paul	Board of Regents of University of Washington	723588	-	21	-
Emile, 718	coal		W. Martin, James M. et al	723696	-	25	-
Emerson et al et al			Pacific National Bank of Seattle	724746	June	18	-
Ember, et al		Naeph. H	Mason, Joel	725032	-	20	-
Emerson, et al David Emmie			O'Malley Brothers Inc	725102	-	25	-
Emby et al Charles			Seattle Amos Co.	725323	-	29	-
Emery et al et al		Richard V.	Emery David W.	725422	Jul	10	-
Emmons et al		Milford	Smith, Harry R et al	724089	-	20	-
Emory et al et al		Merrin	Hanson, Edward O.	726271	-	23	-
Emby et al Charles			Leah, John M	726626	Aug	3	-
Emerald Insurance Co Inc	coal		Transamerica Insurance Co	726882	-	10	-
Emerald Personal Information Center, Inc.			Starling Engraving Co., Inc	726890	-	10	-
Emery et al et al		Johnny	Cho, Kyeu Gyu	727066	-	14	-
Emmie Concrete Construction Co			Washington Transit Inc	698856	-	26	-
Emerald Properties, Inc.			Washington Coal, Inc.	698857	Sept	1	-
Emerson, et al et al David Emmie			Salley Blue Co. Inc.	728121	-	14	-
Emerson, et al David Emmie			Palmer Electric Co	728154	-	15	-
Emerrick et al et al		Marvin	Hanson, Edward P	726271	-	18	-
Emerson et al et al Dave			Hillberg, Gayle	728542	-	23	-
Emerson, et al et al David Emmie			Wilcox, Donald R. D/C/O	728705	-	28	-
Emerson, et al et al David Emmie			Blue Struck Electric Co. Inc.	72876	Dec	1	70
Emmie Electric Co. et al			Drows, William D. et al	728629	Sept	25	-
Emerson, et al		Robus N.	Johnston, Rubin W. et al	728705	Dec	13	-
Emmerson et al et al			GAYLE MILLING	729735	-	22	-
Emerson et al et al David (Emmie)			Northeast Carpet Sales, Inc	729899	-	27	-
Emerson et al et al et al		Thomas	Bowman Luan et al	730511	Nov	12	-
Emerald Properties		GARN. DEFOT.	Beldair Construction	728917	-	16	-
Emmerson et al et al et al			Stoneway Concrete Inc	730716	-	17	-
Emmerson et al et al et al			Stouch, Gary A.	730720	-	17	-

**Defendant**

**INDEX—Superior Court, King County, Wash.**

DEFENDANT				PLAINTIFF				Number Of Cause	DATE OF FILING		
SURNAME	PLAINTIFF - GIVEN NAME			SURNAME	PLAINTIFF - GIVEN NAME				Month	Day	Year
ABCDEFGHIJKL	MNOP	QRSTU	VWXYZ	ABCDEFGHIJKL	MNOP	QRSTU	VWXYZ				
Embassy Theatre	Embassy Corp.			Thaag, Daniel J				730156	Nov	17	1970
Embassy Theatre				Sherpax, Inc				730929	-	18	-
Embassy Theatre				Thaag				730953	-	20	-
Embassy Theatre				Sherpax, Inc				730929	-	20	-
Embassy Theatre				Sunderlin, Hans H.				714455	-	20	-
Embassy Theatre				Silmore Steel Contractors				730203	-	27	-
Embassy Theatre				Payco of Washington, Inc				731141	-	27	-
Embassy Theatre				aaaa, Inc				731157	-	27	-
Embassy Theatre				Calvin Clark Archer				731802	Dec	14	-
Embassy Theatre				Family Finance Corporation				731868	-	15	-
Embassy Theatre				Sherpax, Inc				730929	-	17	-
Embassy Theatre				Credit Research Bureau, Inc				732038	-	18	-
Embassy Theatre				Byas, Gladys E.				732088	-	21	-
Embassy Theatre				Northwest Pacific Charter, Inc				732310	-	29	-

*Defendant*

INDEX---Superior Court, King County, Wash.

*Plaintiff*

SURNAME	PLAINTIFF - GIVEN NAME				SURNAME	DEFENDANT - GIVEN NAME				Number Of Cases	DATE OF FILING		
	ABCDEFGHIJ	KLMNOP	QRSTUWXYZ	INITIAL		ABCDEFGHIJ	KLMNOP	QRSTUWXYZ	INITIAL		Month	Day	Year

*Em*  
~~Em~~

# GENERAL INDEX - DEFENDANT - SUPERIOR COURT, KING COUNTY, WASH.

DEFENDANT	GIVEN NAME	PLAINTIFF	NUMBER OF CAUSE	DATE OF FILING		
				Month	Day	Year
England	Jack	H. England Judy A.	652051	Jan	3	1966
Ennelaw First Nat Bank	Stano	COMMERCIAL SERVICE COMPANY, INC.	652103	-	11	-
Ennelaw City of et al		Wash. State of et al	652477	-	12	-
Ennis et al	Clyde Helen	M. Greenwood Finance Co.	654253	Feb	14	-
Enga	Mary	J. Enga Paul E.	654461	-	16	-
Engel	Peter	J. Engel Willie D.	654463	-	17	-
Engel et al		Pioneer Credit Co.	654827	-	24	-
Engel et al	Albert	Union Fed Sav & Loan Assoc.	655052	Mar	1	-
England et al	Albert	COMMERCIAL SERVICE COMPANY, INC.	654799	-	1	-
Engineering Industrial Systems		COMMERCIAL SERVICE COMPANY, INC.	650319	-	11	-
Ennelaw et al		St. Regis Paper Co	655715	-	14	-
Ennelaw City of et al		J. Messingha, Inc., et al	653917	-	17	-
Enochson et al et al	(Carolus) Ken	Hanson Lumbering Co.	656465	-	29	-
Enderson et al et al	Fred	Edmunds Wilbur J et al	656543	-	29	-
Engel	Eric	H. Higley Evelyn M.	654828	Apr	1	-
Engel et al et al	Alise	L. Engel Lawrence E.	657909	-	21	-
England et al et al	Floyd	Tom Swell	658009	-	28	-
England et al	C	Hanson Terry	658542	May	3	-
Environmental Control Co		J. Bourroughs William D et al	658885	-	11	-
England et al	C. James (Janet)	Howard Cooper Org.	655529	-	27	-
Engle et al	Marshall (Lhari)	Waltham Bank	659676	-	24	-
Engles et al	Lee	Housing Authority of King Co	660167	Jun	2	-
England et al	(Kathy)	M. General Credit Credit Corp	661092	-	21	-
Enginger, et al (Bernadine)	William A.	Robson Building Co	661386	-	24	-
Entel, et al, et al	L.	R. H. Steiner Org. Inc.	661550	-	29	-
Entel's Trade Mart, et al		H. Klein Aircraft Inc.	662335	July	15	-
Enestad, et al	John	"Sagamac", et al Orgs	662359	-	15	-
Engel et al et al (Arthur) Frederick		T. O'Keefe John	662502	-	19	-
English & American Ins. Co. Ltd. et al	James (Janet)	Puget Sound Tug & Barge Co. et al	662586	-	20	-
England, et al	Robert	C. Washington Credit Mgmt Co	662651	-	21	-
English & American Ins. Co. Ltd. et al		Port of Seattle et al et al	662705	-	21	-
Engle		L. Engle et al et al	662837	-	25	-
Engmark et al	Delores	L. Engmark Thomas	663219	Aug	1	-
England, et al	C.	J. Mida Inc.	664265	-	19	-
English et al	Harward (Marg)	R. State of Washington	664773	-	29	-
Engle et al et al	Kirkland	Association Collectors Inc	664874	-	30	-
Engel et al et al (respondent) et al		Wash. State of	665372	Sept	15	-
Engel et al et al Charles		R. Merchant Credit Corp	666731	Oct	4	-
Encyclopedia Britannica Inc		COMMERCIAL SERVICE COMPANY	646314	-	14	-
Enola Design Assoc. et al		Sherman Bealham Inc	667575	-	18	-
Ennelaw Sales & Service, et al		Morsall Leonard L.	667507	-	17	-
Entick et al et al Edward		L. Eng, et al et al	667784	-	21	-
Enza	Albert	Enza, Myrtle M.	667807	-	24	-
Engle, et al et al		Agor Penn R	667819	-	24	-
Ennelaw School District #214, et al		Wash. State of et al et al	667967	-	26	-
Enree, Inc		COMMERCIAL SERVICE CO.	656392	-	31	-
Engel et al	Frank	Sina	668202	Nov	1	-
Engle et al	Jack	C. Engle, Marjorie E.	668440	-	3	-
England, et al		W. Morrison, Oakley, et al	668457	-	3	-

over

# GENERAL INDEX - DEFENDANT - SUPERIOR COURT, KING COUNTY, WASH.

DEFENDANT	GIVEN NAME	PLAINTIFF	NUMBER OF CAUSE	DATE OF FILING		
				MONTH	DAY	YEAR
Enda Design, Ltd		Smith, Glenn F.	668472	Nov	4	1964
Enrico	John	T. Enrico, Henry A.	668797	-	14	-
England Commercial Properties Inc. (add'l def't)		City of Seat	668892	-	23	-
Enrico, Inc	John (James)	T. Nagtagan, Jeanne	669983	Dec	1	-
Engel	Richard	C. Wenzell, Agnes T.	670276	-	6	-
Engel, Ltd	Alice	Wachino, George, Ltd, Ltd	670345	-	7	-
English,	Phillip	F. Pacific Finance Loans	670856	-	16	-
Enrico, Inc, Ltd	John	T. Pacific Equipment Co.	670882	-	16	-
Enation Building Co Inc.		Darling, Richard	671672	Jan	5	1967
Eng, Inc, Inc	(Ingberg) Edward	a. Eng, John	671762	-	6	-
English, Ltd	Clepton	Wash, State of	672707	-	23	-
England Commercial Properties Inc		Clark - Rumble, Associates Inc	673192	-	31	-
Engert	Walter	V. England, Linda L.	673350	Feb	3	-
England	Jack	W. Therman, Judy A.	673578	-	7	-
England Stewart, C		Jane Cohn, Howard M. Stur	673619	-	8	-
England	Donald	J. England, Elmer R.	673810	-	10	-
Engelhart, Inc, Ltd	(Leo) Morris	J. Salmon Bay Sands Brand Co.	673821	-	10	-
Engelhart & Co., Ltd		" " " "	673871	-	10	-
Engelart	Wesley	J. Engart, Laura J.	674612	-	27	-
Engelart	Kenneth	L. Engart, Teresa	674662	-	28	-
Eng, Ltd	Ed	Wollman, Carlos R., gelton	674824	Mar	2	-
England, Inc, Ltd C	Gene	J. Besborough, William	674925	-	3	-
England, Inc, Ltd	Jack	W. " "	674925	-	3	-
Eng	Ronald	L. Eng, Shirley	675149	-	8	-
Enda Design Assoc, Ltd		A. De Finestrand Co.	675407	-	14	-
Engert, Inc	Henry	S. Eaton W. O. Jr.	675553	-	15	-
Engstrom		Engstrom William	675638	-	17	-
Enwood	Emma	F. Finley, Carolyn	676568	-	21	-
Enda Studios, Ltd		Hoffger, Jeanne	676776	April	5	-
English & American Inc. Co. Ltd, Ltd		Kin, Agnes A., Ltd	676976	-	7	-
Engel, Inc, Ltd, Ltd	Fred	L. Orr, Jeanne	677093	-	11	-
England, Inc	Jim	H. F. Steiner Organization Inc.	677183	-	12	-
Enuncawumber Co. Ltd		Financial Officers Agency Inc.	677342	-	14	-
England,	Barbara	D. England, Gloria	677369	-	14	-
Engelart	Charles	A. Engelart, Elizabeth A.	677722	-	20	-
England, Inc	(James) Jim	Murray, Wayne	678197	-	28	-
Enterprise Construction Co. Ltd		Steiner, Reg Inc, N.L.	678235	May	1	-
English	George	W. English, Louise Ann	679272	-	16	-
English	Phillip	W. English, Lorraine C.	679818	-	25	-
Engelhart	Orin	L. Engelhart, Jacqueline D.	680064	Jun	1	-
England, Inc	Jack	W. N. W. Smith & Equipment Co	680471	-	8	-
England	Charles	V. Nakayama, Worene	680514	-	8	-
English, Inc	Mamie	State of Washington	680624	-	12	-
English, Inc	Victor	R. State of Washington	680624	-	12	-
Encalada	Alexandro	M. Encalada, Isabela	680969	-	15	-
England, Inc, Ltd	(David) David	J. Finne, David	681048	-	16	-
Engel	Emilia	J. Finne, David	681080	-	19	-
Engelbreton	Jerry	R. Engelbreton, Kathleen	681351	-	22	-
Chocara, Inc, Ltd	Darryl	Northwest Investment Co Inc.	681947	Jul	3	-
Engberg	Loraine	R. Engberg, Helen C.	681958	-	3	-



# GENERAL INDEX - DEFENDANT - SUPERIOR COURT, KING COUNTY, WASH.

DEFENDANT	GIVEN NAME					PLAINTIFF	NUMBER OF CAUSE	DATE OF FILING		
	ABCD	EFGH	IJ	KLMNOP	QRSTUWXYZ			Month	Day	Year
Enoch, et ux				Harold	(Morris)	E. Jones, Lillian C.	682162	July	7	1967
Engelke				Harry	(Crumbling)	Metropolitan Life Insurance	682234			
Engelstad					Ramon	Engstrom, Rurpe	682297		10	
Engel					Jerry	Richard	682384		12	
Engelund						Karl	682529		13	
English, et ux, et al				Gary	Jack	Englund, Dorothy Shelby Distributors	682659		17	
English							682889		19	
Engler				Donald		English, Sharon	682968		20	
England, et ux					Ray	Enger, Patricia J	683880		25	
Englund				Jack	(Sharon)	N. J. Steiner Loan Co	684029	Aug	7	
Enos, et ux					Melvin	England, Carol A.	684330		14	
Engle					(Lita (Sandra)	Wolkow, Charles	684529		17	
English, et ux				Addie	William	Holl, Sheila M.	684911		23	
England, et ux, et al						Association Collectors Inc.	685594	Sept	5	
Eng, et ux, et al				Jack		Alper, Morris	685889		12	
Engleson				Hoag		Simson, Ray C.	686000		12	
Endorf, et ux					Kenneth	Engleson, Wanda B.	686090		13	
Engelhart					James	Waters, Wallace W.	686381		18	
Engen				Howard		Engelhart, Linda J.	686868		26	
Englund				Clarence		Engen, Margaret B.	687003		27	
English						Englund, Gloria M.	687106		28	
Enemark				Betty	Walter	English, Kathleen D.	687150		29	
English						Enemark, James L.	687472	Oct	5	
Erico Corporation, et al				Simon		English, Patricia M.	687543		5	
Eng				Leonard		Saxton, Charles E. Jr.	687849		11	
Etate Building Co, Inc						Eng, Ingeborg J.	687914		11	
Engbrecht				Bonnie		GARN. DEFDT. Edwards, Judith L.	558263		17	
Ennis Business Forms, Inc						J. Engbrecht, Oliver L.	688394		19	
Engineering Corporation of America						GARN. DEFDT. Eubenton, Shirley A. et al	682593		27	
England, et ux				Jack		GARN. DEFDT. Chmura, Carol	582822		30	
English					Pamela	W. Northwestern Collection Service Inc.	688986		30	
Environmental Properties				(Janet)		M. English, James W.	689201	Nov	2	
England, et ux					Richard	GARN. DEFDT. St. Agis Paper Co.	688880		2	
Engle, et ux, et al						N. W. Audit & Ady Co	689377		6	
Engle, et al				James		Duxton, Harry, et ano et al	689888		14	
Engen, et ux				Eugene		Duxton, Harry, et ano et al	689888		14	
England, et ux				Jamie		Higgett, Emil et ux	690019		15	
England, et ux						Wilson, Arthur E	690562		27	
Engle						Lewis, Fessie	690775		29	
Engelhardt, et ux				Jerry	(Auth)	Engle, Mary J.	691184	Dec	6	
Engle, et ux, et al (Klick)				Judy	Richard	Sube Coebuck & Co.	691494		12	
Ernest				Lee		Commercial Union Co Inc.	692886	Jan	18	1968
Erney, et ux				Morris		Economy Finance Co	693405	Feb	2	
England, et ux				Jack	(Sharon)	L. August, Tony A. F.	694035		26	
Englewood Thruway						GARN. DEFDT. N. W. Audit & Ady Co.	694594	Mar	13	
Engels, et ux, et al				Herbert		Spandachutte, Virginia P.	626444		18	
Erard, et ux, et ux				(Oecia)	Cozy	Stoney, Carl	694828		22	
England, et ux						National Bank of Commerce	695115		27	
Engstrom, et ux				Donald		Lewis, Tressie	695171		27	
						J. E. Smith, Percy M.	695452	Apr	8	

# GENERAL INDEX - DEFENDANT - SUPERIOR COURT, KING COUNTY, WASH.

DEFENDANT	GIVEN NAME		PLAINTIFF	NUMBER OF CASE	DATE OF FILING		
	ABCD EFGH	I J KLMNOP QRSTUVWXYZ			Month	Day	Year
England Commercial Prof Inc et al			Valley Associates Inc	695535	Apr	10	1968
England, et al			West Valley Associates Inc	695555	-	10	-
Enatai Building Co Inc			Lagunas New World Life Ins Co	695650	-	12	-
Enatai Building Co Inc et al			Schwartz & Jolly, Inc.	695925	-	22	-
England, et al et al	(Janet)		Petty, Harold	696309	May	3	-
Engelstad, et al et al	Ellen	(Arby)	National Bank of Commerce of Seattle	696488	-	7	-
Engle, et al			Carson, Nick B	691308	-	22	-
England, et al			Hoyes, Steve et al	697127	-	29	-
English et al		William	John, Raymond E et al	697322	Jun	6	-
Engquist, et al		Richard	Commercial Spruce Co et al	697425	-	11	-
England		Helena	Greenwood Home Co Inc et al	697531	-	12	-
England et al et al			State of Washington	697516	-	12	-
Enesa		Martin	Credit Bureau of Auburn-Kent Inc.	697768	-	19	-
English, et al		Barry	Prober, William E	697845	-	21	-
England, et al			Sound Elevator Co. Inc.	698402	Jul	11	-
England et al		(Janet)	Wensberg, K.	698449	-	16	-
Enberg, et al		Songlas	Amalows, Ed et al	698723	-	22	-
Engdahl, et al		Sudmay	Continental of Seattle Inc.	699192	Aug	5	-
Enoch, et al		(Harold) Mexico	Fuchs, Lorella B et al	699421	-	9	-
England et al		Jack	Gannon, W J	699966	-	28	-
Enco, Inc, et al			Rhodes, J. Carl	700431	Apr	11	-
England, et al		Thelma	Washington Credit Inc	700797	-	25	-
Enco Incorporated, et al			Automobile Mutual Ins Co of America	701602	Oct	15	-
England, et al		Jamie	Olson, Carl	701819	-	21	-
Engelbrecht, et al		Kaye	Lilless, William E	701985	-	24	-
Enstad, et al		Laurette	Bruster, J B	702259	-	31	-
Enatai Building Co et al			Schulter, Paul A. et al et al	702558	Nov	12	-
Enatai Building Co Inc.			Valley, Russell L.	702831	-	19	-
Enco Incorporated, et al			Automobile Mutual Insurance Co of America	701602	-	20	-
Endelberg, et al		Brigitte	Universal Wallboard Co.	701800	-	27	-
England, et al			Madison Credit Assoc. Inc	703343	Dec	5	-
Ennis, et al et al		Richard	McNeil Frank et al	700932	-	4	-
Enmundson, et al et al			Life Collector Co. Inc.	703365	-	11	-
Enmundson Gas Co, et al			Life Collector Co. Inc.	703365	-	11	-
England, et al		(Janet)	Winnock, Barbara W.	703655	-	16	-
Engineered Economics Inc.			Northwest Mortgage Inc.	696298	-	16	-
England, et al et al		Jamie	New Richmond Supply & Hardware, Inc	703674	-	16	-
Enatai Building Co Inc			Credity Service Inc	703753	-	19	-
Enmundson et al et al			State Credit Association Inc	703766	-	19	-
England, et al et al		Jamie	Burrows, John S et al et al	703752	-	19	-
English, et al		(Lee) Winfield	Murray, Vogel L. et al	704220	Jan	8	1969
English Day Enterprises, Ltd et al			Corbett, Larry E et al	704303	-	9	-
Enatai Building Co Inc et al			Quinn, H. B. et al	704350	-	10	-
England, et al et al		(Janet)	Burroughs, William	704419	-	14	-
England, et al et al		Jack	Burroughs, William	704419	-	14	-
Enatai Building Co			Mussen Supply Co	704839	-	28	-
Engineered Industrial Systems, Inc.			Supro Corporation	704902	-	29	-
Engelhart, et al		Royal	Bode, Katherine	705054	Feb	4	-
Ennis, et al et al		Richard	McNeil, Frank et al	700932	-	6	-
Enatai Building Co Inc.			Little, H. W. et al et al	705245	-	7	-

# GENERAL INDEX - DEFENDANT - SUPERIOR COURT, KING COUNTY, WASH.

DEFENDANT	GIVEN NAME	PLAINTIFF	NUMBER OF CAUSE	DATE OF FILING		
				Month	Day	Year
Enatai Building Co.		Schwitzer, J. A.	698371	Feb	7	1969
Engel, et al	George (Jane)	Van Etten, B. A. et al	705748	-	20	-
Enatai Builders Co.		Incewong, Aluminum Co	705891	-	26	-
Engelstrom, et al	Don	U. C. W. Federal Credit Union	705952	-	27	-
Engstrom, et al		Travis, Charles	706109	Mar	4	-
England, et al	Harley	Washington Credit Inc.	706786	-	19	-
Enatai Building Co. Inc		Commercial Service Co. Inc.	708937	-	25	-
Ersson, et al		Supra Corp	707265	Apr	2	-
Enatai Building Co., Inc	(Marion) Walter	City of Seattle	707383	-	1	-
Enatai Building Co. Inc		Horne, Peter S.	707393	-	4	-
England, et al		Kearner Highway, Inc. et al	707421	-	7	-
Enatai Building Co. Inc	Jack	Miller, Donald D.	707502	-	8	-
Erumclaw Realty, et al		Horne, Peter S.	707393	-	4	-
Engel, et al	Casper (Jean)	Toot, Donald S.	707965	-	21	-
England, et al	James	Engel, Edwin F.	707970	-	21	-
English, et al		Nippal Credit Association, Inc.	708117	-	23	-
Ekhus, et al	Joyce	Shellan, Sharon	708164	-	24	-
England, et al	Jack	Vukelich, Emil	708207	-	25	-
England, et al		Shawny, Gary L. et al	708243	-	28	-
Enatai Building Co. Inc. et al		Washington Credit Inc.	708395	-	29	-
English, et al		Vally Plaza Co. Inc.	708506	May	5	-
English, et al	Stacy (Margaret)	Bureau Investment Corp.	708832	-	12	-
Engen, et al	Larry (Mary)	American Finance Corp.	708891	-	13	-
Eng et al et al	(Mary)	Washington Heights Federal Savings	709000	-	15	-
Engel et al	Walt	Baker, Raymond E. et al	697322	-	21	-
Engel et al	(Ruth) T	First Federal Savings & Loan of Bremerton	709192	-	22	-
Engel et al	Richard	First Mutual Savings Bank of Wash.	709198	-	22	-
England et al	James	Swartz, Russell B. et al	709261	Jun	5	-
Engel et al	Fred	Washington School Supply Co.	709725	-	6	-
Engineered Forest Products Co.		Commercial Service Co. Inc.	701371	-	18	-
Engel, et al	Fred	Washington Asphalt Co.	70464	-	25	-
English et al	Ralph	Western Investment Corp.	710871	July	8	-
Engel, et al et al	Kenneth	Stapp, Donald	710903	-	9	-
Enault, et al	J	Horton, Donald	710967	-	10	-
Enault, et al	J	Horton, Dorothy	710968	-	10	-
Engborg, et al	(Stacy) Lowell	Northwest Lumber City Co.	710995	-	10	-
Engineered Industrial Systems Inc.		Tiv, Leo et al	707838	-	14	-
Erumclaw Furniture Co. et al		Northwest Pacific Railway Co.	711306	-	18	-
England et al	Jack	National Bank of Commerce	711521	-	24	-
Engstrom et al	Thelma	Polanski, Arlyn et al	711734	-	30	-
England et al		Canadian Imperial Bank of Commerce	711960	Aug	5	-
English et al et al	John (Carol)	Adler, Robert et al	712130	-	8	-
England et al		Metropolitan Mortgage Co.	712301	-	13	-
England, et al	Janice (Janet)	Washington Credit Inc.	712445	-	18	-
Enatai Building Co. et al		Seattle Plumbing Supply Co.	712634	-	21	-
Enaminger, et al	Everett	Nemela, Yrjo et al	713244	Sept	9	-
Endicott et al	Paul	Willits, Gary M.	713365	-	11	-
Engel et al	Mary	Abel, C. Jean et al	713635	-	17	-
England, et al et al	James (Janet)	Citizens Sav. Loan Assoc. of Seattle	713721	-	19	-
England, et al et al	Jack	" " " " " "	713721	-	19	-

# GENERAL INDEX - DEFENDANT - SUPERIOR COURT, KING COUNTY, WASH.

DEFENDANT	GIVEN NAME				PLAINTIFF	NUMBER OF CASES	DATE of FILING		
	ABCD	EFGH	IJ	KLMNOPQRSTUVWXYZ			Month	Day	Year
England, et al				James	Evergreen Plumbing & Heating Co.	713852	Sept	23	1969
England, et al				James	King Co. Credit Men Inc	714103	-	20	-
England, et al				James	Callington, W.R.	703320	Oct	22	-
Engstrom, et al				Lee	Alverson, Pola	715331	-	30	-
Enoch, et al				Donald	Fitzgerald, Kevin et al et al	711316	Nov	3	-
Enrich, et al				Victor J	Forker, Dora L	713394	-	6	-
Enrich, School Dist #127				GARN. DEFDT.	Commercial Service Co. Inc	715183	-	14	-
Environmental Properties et al				et al	Rancher, Edward A et al	716205	-	24	-
Environ, et al				Joyce	Robinson Co	716416	Dec	1	-
Eng, et al				Lernard	Continental of Seattle Inc	716473	-	2	-
Engie Construction Co. Inc					W.D. Enterprises, Inc	716673	-	5	-
Enright, et al				Earnest	C'Neal, Kathleen	716799	-	7	-
Enstar Building Co., Inc.					Hardner, William H., et al	717534	-	31	-
Engstrom et al et al				(Donna)	Leung, Dawn et al	717832	Jan	9	1970
Engstrom, Christine				Paul	National Life Insurance Co.	717938	-	13	-
Enberg, et al et al				Burt	Scaudoin, Paul R et al et al	717953	-	13	-
England, et al				James Donald	King Co.	714384	-	13	-
Engineering Development Corp.				GARN. DEFDT.	Northwest Under Adjustment Co	705043	-	0	-
England, et al et al					Pacific Lincoln Mercury Inc	718163	-	19	-
England, et al				Jack	Arin F Drew, Inc	718351	-	22	-
Environmental Properties Inc				GARN. DEFDT.	Association Collectors et al	72654	-	26	-
Engel, et al et al				W	Kenmore Lumber Inc	718559	-	28	-
Engstrom & M.C. Sales Co.				et al	Morris, Angela	718631	-	29	-
Energy Control Corp.					Highland Pacific Agency, Inc	719071	Feb	10	-
Enmundson, City of					Bastyns, Frank	719118	-	11	-
Enmundson Electric et al					Stussler Electric Co	719163	-	11	-
Engen, et al				Eugene	Haggart, Emily A et al	719588	-	20	-
Enoch, et al				Meritt	National Bellevue Casualty	719785	-	26	-
Engstrom (Deceased) by adm. (Don)				Ally	Coyage, Thomas R.	719877	-	27	-
England, et al				James	Costa, Robert E.	720543	Mar	13	-
Ennis, et al et al				(Maude)	Roberts, Charles L. et al	721062	-	25	-
Enoch, et al				"Joe"	Johnson, Delle et al et al	721418	Apr	2	-
Engel et al et al et al				Frank	Northwest Under Adjustment Co	721659	-	8	-
England, et al				(Harley)	State Laminated Ply Inc	722298	-	23	-
Engleke et al et al et al				Joseph	Brockhoff, Roland R	722326	-	23	-
Enmundson School Dist #26				GARN. DEFDT.	American Adjustment Co.	631510	May	8	-
Engle, et al et al				Maryline	First Mutual Savings Bank	723387	-	21	-
Engle				Barbara John	Bellview School Dist #405	723698	-	26	-
Engle, et al				Richard L.	A & Steiner Blyn, Inc	724671	June	17	-
Endres, et al				(Paul)	Northwest Under Adjustment Co.	724728	-	18	-
Enrich Joint Venture et al				Thomas M	STATE OF WASHINGTON	724734	-	18	-
Enoch				Harold Merice	Brewery Savings Bank	724956	-	23	-
Engel, et al				Kenneth	Le Blanc, Leo	725213	-	24	-
Enlow, et al				Ilda	Weller, Calvin W.	725616	Jul	7	1970
Engleman, et al				J.	Woolgar, Paul	725785	-	9	-
England, et al				Michael	Jackson, Thatcher, Thurston & Pines	725931	-	14	-
Enstar Building Co. et al					Kings Gardens Inc	726784	Aug	5	-
Ensey				Kirkwood Nancy	Val Vee Deum Dist.	727050	-	12	-
Enmundson Lumber Co. et al				GARN. DEFDT.	Community Medical Services, Inc	705471	-	19	-
Engels, et al				(Mary) William D	Shih, Cheng J.	727263	-	20	-

# GENERAL INDEX - DEFENDANT - SUPERIOR COURT, KING COUNTY, WASH.

DEFENDANT	GIVEN NAME		PLAINTIFF	NUMBER OF CAUSE	DATE OF FILING		
	ABCD EFGH	I J KLMNOP QRSTUVWXYZ			Month	Day	Year
Engelhardt aka		Lutz E	Thursford Finance Corp.	727441	Aug	26	1970
Engel, Edward		(quit) Neil Mary E	STATE OF WASHINGTON	728106	Sept	14	-
Engel		John	Wakefield Tom	728139	-	14	-
The governing Service Bureau, Inc			Bennett, Jerry	728636	-	28	-
Enatai Building Co. Inc.			Ret Floor Covering Inc.	728835	-	30	-
English Bay Enterprises Ltd.			State Credit Association, Inc.	729392	Dec	14	-
Enterprise Manufacturing Company of			Hartline, Clyde B. et al	729400	-	14	-
Engineer, Design, manufacture Corporation		RECEIVERSHIP	Peterson, Elizabeth B. et al	729422	-	15	-
Engle, Howard		Leonard	Birdsley Jack et al	729494	-	16	-
Engstrom		(Marian) Margie	STATE OF WASHINGTON	729731	-	22	-
Encumstau Public Schools			Washington Credit, Inc	634251	-	26	-
Engberg et al Dennis			SEATTLE FIRST NATIONAL BANK	729998	-	29	-
Engler, et al		Kerale (Marie)	Lee James Finance Plan, Inc	730045	-	30	-
Enlow et al		(Ida) Thomas	WASHINGTON CREDIT	730373	Nov	9	-
Engineer Design Manufacturing Corp			Trucks, Ward W. et al	730445	-	10	-
Engel		Bessie Eldon	MacMullan, William et al	730489	-	12	-
Eng, et al		Anthony Evangelina	Home Federal Savings & Loan Assoc.	730974	-	23	-
Encumstau Dracrol & Equipment Co.			Parti Loans, Inc	729970	-	24	-
England et al et al		Jack	Maynard, Robert A et al	731155	-	27	-
End Zone Inc et al			Seattle Trust & Savings Bank	730044	Dec	18	-
Encyclopedia Britannica, Inc			Lynn, Marilyn B	687416	-	18	-

# GENERAL INDEX - DEFENDANT - SUPERIOR COURT, KING COUNTY, WASH.

DEFENDANT	GIVEN NAME	PLAINTIFF	NUMBER OF CAUSE	DATE OF FILING
	ABCD EFGH    IJ    KLMNOP QRSTUVWXYZ <small>Second Initial</small>			Month    Day    Year

**En**

# GENERAL INDEX - DEFENDANT - SUPERIOR COURT, KING COUNTY, WASH.

DEFENDANT	GIVEN NAME		PLAINTIFF	NUMBER OF CAUSE	DATE of FILING		
	ABCD EFGH	I J KLMNOP QRSTUVWXYZ			Month	Day	Year
<b>Eo-Eq</b>							
Equity Mortgage Co. et al	Joseph.		7 Peterson Klutenack.	652619	Jan	13	1966
Equitable Sav & Loan Assoc et al			Witzstein John & Lucy	652719		17	
Equitable Sav & Loan Assoc et al			Sunset Floors Inc.	655030	Mar	1	
Equitable Sav & Loan Assoc et al			Sunset Floors Inc.	655031		1	
Equitable Sav & Loan Assoc et al			Sunset Floors Inc.	655032		1	
Equipment Brokers Inc.			Lake Alp Lower Dist.	655044		1	
Equity Mortgage et al			Rosebery C.E.	655173		3	
Episcopal Church in Western Wash. et al (Intervention)			United Sav & Loan Assoc.	656560		29	
Equitable Sav & Loan Assoc et al			Calvary Bible Presbyterian Church	657671	Jan	2	
Equitable Sav & Loan Assoc et al			Clark Savors C.	660778		14	
Equitable Sav & Loan Assoc et al			Kelna Mary	660805		15	
Equitable Sav & Loan Assoc.			Norman, Robert W.	662224	July	13	
Equitable Savings & Loan Assoc.			Notary, et al. vs J.E.	664623	Aug	26	
Equitable Savings & Loan Assoc. et al			Clark, George d/b/a	665046	Sept	2	
Eq. Co., et al, et al			Kelna Mary	665465		12	
Epstein, et al, et al			Fitch Soname	665484		12	
Epstein, et al, et al			Woolscroft, Harry M., et al	667775	Oct	21	
Equitable Sav & Loan Assoc.			Beggs, Oswald	668817	Nov	9	
Ans. Equitable Life Assurance Society of the U.S.			Kease, Dorothy I.	668824		9	
Equitable Savings & Loan Association (ad bellum)			Weyers, Mary	670382	Dec	7	
Epstein, et al, et al			King County Water District #25	671993		23	
Eperson			Island Publishers Inc	671539	Jan	3	1967
Equitable Life Assurance Society of the United States			Jano Koback & Co.	671913		10	
Equitable Life Assurance Society of the U.S. et al			Weyers, Mary	670382		18	
Equitable Life Assurance Co. of Iowa			Marlin, Nathan Ann	674341	Feb	21	
Equitable Savings & Loan Assoc. et al			Commercial Service Co. Inc.	674356	Mar	7	
Equity et al (et al)			Lincoln Mechanical Inc.	676253		27	
Equitable Life Assurance Society of the U.S.			Yunker, Sam	676841	April	4	
Equity Realty Inc. (ad bellum)			Dawson Eleanor M.	677007		10	
Equity et al, et al			Nankh, John G. et al	675759		15	
Equity General Leasing Co. et al			McLennott Mark et al et al	679768	May	29	
Equity et al.			Holms Estate Co.	681399	June	23	
Equitable Savings & Loan Assoc. et al			Steyn, David B. et al trustee	683119	July	24	
Equitable Savings & Loan Assoc.			Fossen, Norman L.	646925	July	16	
Equitable Life Assurance of the U.S. et al			Kelna, Mary	683111	Aug	14	
Equity Realty Inc. et al			Western Hill Home Corp et al	684924		19	
Equity Mortgage Inc. et al			Hill, Basil W. et al	685594	Oct	24	
Equitable Realty Corp.			Westside Federal Savings & Loan Assoc	690541	Nov	27	
Eqps, et al, et al			Burgoyne, Ruth A.	690554		27	
Equitable Life Assurance Society of the United States, et al			W.J. Smith, Carroll H.	692238	Nov	28	
Equitable Savings & Loan Assoc. et al			State of Washington	693716	Feb	14	1968
Eqon Co. et al			Gratt, Edward H.	695864	Apr	19	
Eperson			Jules, Suzanne O.	695367	May	14	
Eqing, et al (Beryl)			Pacific Lab Corporation	697212	Jun	4	
Eqon Co. et al			L. Commercial Service Co. Inc.	699214	Aug	6	
Equitable Savings & Loan Assoc. et al			Marable Joe d/b/a	699558		23	
Equitable Savings & Loan Assoc. et al			Van Daal Distributors Inc.	700195	Sept	5	
Eqsons, et al			Nielson, Edward H. et al	700692		10	
			F. Fuller, William et al	700790		23	

# GENERAL INDEX - DEFENDANT - SUPERIOR COURT, KING COUNTY, WASH.

DEFENDANT	GIVEN NAME		PLAINTIFF	NUMBER OF CAUSE	DATE OF FILING		
	ABCD EFGH	I J KLMNOP QRSTUVWXYZ			Month	Day	Year
<b>Eo-Eq</b>							
Eppig, et al		Joseph (Donya) J	State of Washington	701977	Oct	24	1968
Epperson, et al	Dan		Backhoff, Louis W. et al	702394	Nov	6	
Ephraim, et al		Orter	Nationwide Finance Co. of Seattle	702877	-	20	
Eppard, et al	Clyde	(Wharton)	State Credit Association, Inc.	702915	-	21	
Epson Co. et al			Seattle Trust & Savings Bank	695183	-	29	
Eplano, et al	Barbara	Paul	Bank of America	703467	Dec	10	
Equitable Life Assurance Society of the U.S.			State of Washington	705237	Feb	7	1969
Equitable Life & Guaranty Ins. Co. of East Lake City			Muller, John et al	706312	Mar	10	
Epson Co., The, et al			Sparkman & M. Lean Income Fund	706725	-	19	
Equitable Realty Corporation, et al			P. S. Investment Co.	707457	Apr	8	
Equitable Savings & Loan Assoc. et al			Moore, Catherine	708522	June	26	
Epson Co. et al			Business Finance Co., Inc.	711417	July	13	
Equipment Attachments Inc. et al			Business Factors Inc.	711770	Aug	7	
Epson Leasing Co. et al			Prudential Insurance Co. of America	712466	-	13	
Equitable Savings & Loan Assoc. et al			King County	717244	Aug	21	
Equitable Life Assurance Society of the U.S.			"	712444	-	21	
Epson Co. et al			Metropolitan Life Insurance Co.	713564	Sept	16	
Equitable Savings & Loan Association, et al			O'Neil, Allen et al	714400	Oct	7	
Epson Leasing Co. et al			Pacific Equipment Co.	714763	-	16	
Epley	Gerard (Hildebrand)		Gregory, Dale H. et al	715061	Jan	15	1970
Equitable Life Assurance Society of the United States			STATE OF WASHINGTON	718254	-	21	
Equity Investors et al			Columbia Bank Products Inc.	719510	Feb	19	
Epsom et al	Maurice		Rosen, Charles	719889	7	24	
Equitable Life Assurance Society of the U.S.			Household Finance	719286	-	24	
Equitable Savings & Loan Assoc. et al			University Mechanical Contractor	720408	Mar	11	
Equitable Enterprises			Barry, Thomas	721106	-	26	
Equicase Corp. et al			Field Lumber Co.	709582	April	30	
Equitable Savings & Loan Assoc. et al			Engineered Industrial Systems Inc.	722796	May	5	
Equity Investors, et al			Stussie Electric Co.	723214	-	13	
Epson, Inc. et al			Sturges, Robert W. et al	723893	-	28	
Epson et al			I. D. L. Land Development Co.	722862	-	28	
Epson Co. et al			Seattle Trust & Savings Bank	724142	June	4	
Equitable Savings & Loan Assoc.			Metropolitan Federal Savings & Loan	724338	-	9	
Epsom	Maurice		Christenson, Arnold	705797	-	12	
Equity Investors			United Collection Service Inc.	716427	-	5	
Equitable Agency, Inc. et al			National Bank of Washington et al	724856	-	19	
Equity Investors et al			King, Naomi F.	726650	Aug	4	
Equitable Life Assurance Society of the United States			Deason W. B. et al	727515	-	27	
Epson Lumber Leasing Co. et al			Nelson, J. D. et al	727748	Sept	2	
Equitable Federal Savings & Loan Assoc.			Hardy, Dorothy	727814	-	3	
Equitable Savings & Loan Assoc. et al			Warden, Dennis C. et al et al	720676	-	11	
Epsom, et al	Herbert		San Joe Raphael Co.	728700	-	28	
Epsom & Sons, Inc. et al			Dierreich-Park Company of Washington, Inc.	729045	Dec	6	
Equitable Savings & Loan Assoc. et al			Orro, Inc. et al	729551	-	19	
Equitable Savings & Loan Assoc. et al			Argon, William D. et al	730528	Nov	12	
Equitable Life Assurance Society of the United States			Walby, Donald	730684	-	16	
Equitable Life Assurance Society of the United States et al			Ronald Sweet District	731000	-	23	
Equitable Life Assurance Society of the United States et al				731778	Dec	14	
Equitable Life Assurance Society of the United States et al			Car, Genevieve	732037	-	18	



# GENERAL INDEX - DEFENDANT - SUPERIOR COURT, KING COUNTY, WASH.

DEFENDANT	GIVEN NAME				PLAINTIFF	NUMBER OF CAUSE	DATE OF FILING		
	A B C D E F G H	I J	K L M N O P Q R S T U V W X Y Z	Initials			Month	Day	Year
E <sub>0</sub> -E <sub>9</sub> Epps			George Mary	W	City of Seattle	732287	Dec	28	1970



# GENERAL INDEX - DEFENDANT - SUPERIOR COURT, KING COUNTY, WASH.

DEFENDANT	GIVEN NAME		PLAINTIFF	NUMBER OF CAUSE	DATE OF FILING
	ABCD EFGH	I J KLMNOP Q RSTUVWXYZ Second Initial			
Er v Parent Co.			People's Nat Bank of Wash.	657526	Jan 22 1966
Eriasons			Eriasons Velta B.	653082	21
Eritland		Valdemare	Eriasons Velta B.	654181	Feb 14
Eriasons		Valdemare	Eriasons Velta B.	654435	16
Eriandson et al	C		United Sales Rubber Co.	654646	21
Erickson et al	Arthur (Franca)		Kniekerbooks, Ltd. Savoy Assoc.	654730	28
Erickson et al	Calbernia	Robert	" " " "	654730	23
Eriwin et al		(Lois) William	Seattle Bonded Collectors	655296	Mar 4
Eriken et al		(Goma) Walter	Pepper, Irwin R. et al	655777	15
Ernest Hardware			Alexander Kyle	656415	25
Ernie's Elect. Shop et al (et al et al)			Burwell & Morford	645270	Apr 6
Erhard et al	Harvey		Fox, Stanley et al	657202	11
Ernst Hardware Co et al			Washington State of ex Rel	657469	14
Erickson et al		Mabel (Marian)	Erwin Paul & Co.	658292	23
Erickson	Donna		Erickson Daniel C.	658335	29
Erland		Robert	Erland Miranda C.	659007	May 12
Erickson		Wilbur	Erickson Barbara J.	659547	20
Erickson	Carl		Erickson Fred A.	659744	25
Erickson et al			Hague, John	660274	Jun 6
Erickson et al	Donald	(Ruby)	Ninth Fed Savings Assoc.	660276	6
Ernst Hardware Co et al			Metropolitan Life Ins. Co.	660397	7
Ernst	Delbert		Ernst Jeta L.	660428	8
Eriandson et al	C		Bedman Arthur P et al	660576	9
Erickson	Arvid		Erickson Olav K.	661115	21
Erickson	Alan		Erickson, Renee D.	662337	Aug 15
Erue	David		Erue, Judy Ann	662774	22
Erickson et al	Carl	Patrick	Elftmann, Dale A. et al	663001	27
Erwin			Erwin, Paula E.	663227	Aug 1
Eriandson, et al	Carl		Elfrand, Kenneth	663290	2
Erwin	Arthur		a. Erwin, Emily E.	663688	9
Erwin	Burton		Erwin Patricia	664083	16
Eriandson, et al	Carl		Vaino P-X Inc	664258	18
Eriandson		Ralph	Ericksen, Linda K.	664354	Aug 22
Ernest Hardware Co.			John W. Schade Contractor Inc.	664555	24
Erickson	Jan		R. Erickson, Irene E.	665787	Sept 16
Er v Parent Co. et al			Simpson, Roy L. et al	666514	29
Eriandson	Carl		Z. Nalin Electric Inc.	666907	Oct 6
Eriandson, et al	Carl		Marion Dorothy J.	666879	7
Erwin, et al	Arthur (Emily)		a. West Mutual Bank	667037	7
Erickson	Howard		C. Erickson, Linda Lee	667514	18
Eriandson, et al	C. Everett		L. Villet, Emily	667863	24
Erk			m. Erk, Pella, aka	667956	26
Erickson		Richard A.	Erickson, Orvaan E.	667980	26
Erickson, et al		Warren	Kuffertine, Floyd, et al, et al	668277	31
Eritland, et al, et al (Melina)		B.	Wash. State of	668538	Nov 4
Eriandson - Kaufman Co., et al			Fox, Stanley M. et al	669295	18
Erickson, et al	Hubert	(Patricia)	S. Continental of Sno King	669864	30
Erickson	Melvin	A.	Erickson, Jeanne M.	670253	Dec 6
Er v Parent Co.			National Bank of Commerce	670280	6
Erickson		Donald G.	Erickson, Emma R.	670386	8

over