



# King County

Department of Judicial Administration

*Barbara Miner*

*Director and Superior Court Clerk*

(206) 296-9300 (206) 296-0100 TTY/TDD

King County Superior Court

## Quarterly Statistical Report

First Quarter 2020

Department of Judicial Administration

Prepared by: Shiquan Liao, Ph.D., Statistician

*April 20, 2020*

**Report #: QTR-2020-01**

*Seattle:*  
516 Third Avenue Room E609  
Seattle, WA 98104-2386

*Regional Justice Center:*  
401 Fourth Avenue North Room 2C  
Kent, WA 98032-4429

*Juvenile Division:*  
1211 East Alder Room 3015  
Seattle, WA 98122-5598

# Quarterly Report Summary

King County Superior Court, First Quarter 2020

**NOTE: Washington State Supreme Court orders related to the coronavirus pandemic, beginning March 2020, affect the statistics for the foreseeable future.**

## Highlights

- **Criminal Cases** -- The criminal filings in the first quarter of 2020 were higher than that in 2019, with a 19.5% increase. The criminal filings (excluding RALJ) in the first quarter of 2020 were 1,628 cases. MRJC accounted for 39% of the total criminal filings in the court. The resolutions of criminal cases in the first quarter of 2020 were 1,427 cases, lower than the filing volume in the same time period. The pending criminal caseload at the end of the first quarter of 2020 was 4,188 cases (excluding RALJ, but including 315 cases enrolled in the drug diversion court.) Of the 4,188 pending criminal cases, 38% were the MRJC cases. **The increase in pending criminal caseload is primarily due to the COVID-19 pandemic causing the court to issue many fewer bench warrants and to postpone jury trials, thus keeping these cases in pending active status.**
- **Civil Cases**. Filings in general civil cases (case type 2) in the first quarter of 2020 were lower than that in 2019 (-8.7%). The civil resolutions were also lower than the filing volume in the same time period. The pending civil caseload were 8,515 cases at the end of the first quarter of 2020. MRJC had 36% of the civil pending caseload at the end of the first quarter of 2020.
- **Domestic Cases**. For domestic cases (case type 3), the filings in the first quarter of 2020 were almost the same as that in 2019 (-0.9%). The resolutions of domestic cases lagged behind the filing volume in the same time period. The pending domestic caseload was 4,431 cases at the end of the first quarter of 2020, with 41% being the MRJC cases.
- **ITA Cases**. The filings of ITA cases in the first quarter of 2020 were lower smaller than in 2019 (-3.1%), totaling 1,155 cases. The filing of ITA cases showed a flatter pattern after sharp increases in previous years. The pending ITA caseload at the end of the first quarter of 2020 was 263 cases.
- **Juvenile Dependency/Termination (DEP/TER) and At-risk Youth (ARY)/Child-in-Need of Service (CHINS) Cases**. In the first quarter of 2020, the filing volume in juvenile related cases showed a decreasing pattern when compared to the same time period in 2019, dependency filings down 33.2% (-33.2%), termination filings down 16.2% (-16.2%), truancy down 32% (-32.0%), while ARY/CHINS/Other up 8 cases (+8 cases). At the end of the first quarter of 2020, there were 638 dependency cases, 297 termination cases, and 119 ARY/CHINS/Other cases pending resolution.
- **Juvenile Offender Cases**. The juvenile offender filings in the first quarter of 2020 were 268 cases, a slight decrease from 2019 (-2.9%). The resolution pace for juvenile offender was mildly behind the filing pace in the same time period. At the end of the first quarter of 2020, there were 659 juvenile offender pending cases.
- **Pro Tem Use**. In the first quarter of 2020, the daily Pro Tem use by the court was 2.5 FTEs, a low volume.
- **Post-resolution Modifications (Table 1-A)**. In the first quarter of 2020, there were 170 modifications (both parenting plan and relocation modifications).

Table 1. Year-to-Date Filing Activity

King County Superior Court

Reporting Category	Year-to-Date (Jan – Mar) and Annual Filing Activity <sup>(1)</sup>					2019-2020 change (+ means "increase")		% of 2020 Total Filing <sup>(2)</sup>
	2016	2017	2018	2019	2020	Cases	Percentage	
<b>Total (incl. RALJ)</b>								
Year-to-Date Filing	12992	13209	14094	13218	12475	-743	-5.6%	
Annual Filing	51472	53115	53835	52889				
<b>Criminal (excl. RALJ)</b>								
Year-to-Date Filing	1647	1606	1505	1362	1628	+266	+19.5%	13.1%
Annual Filing	6632	6441	5989	6607				
<b>Civil (excl. RALJ)</b>								
Year-to-Date Filing	5118	5204	5792	5480	4981	-409	-8.7%	39.9%
Annual Filing	21222	21517	22217	21202				
<b>Domestic</b>								
Year-to-Date Filing	1897	1850	1944	1697	1682	-15	-0.9%	13.5%
Annual Filing	7512	7597	7640	7280				
<b>Probate</b>								
Year-to-Date Filing	1586	1783	1686	1762	1622	-140	-7.9%	13.0%
Annual Filing	6073	6418	6382	6804				
<b>Guardianship</b>								
Year-to-Date Filing	245	228	258	200	180	-20	-10.0%	1.4%
Annual Filing	1008	949	977	706				
<b>Adoption</b>								
Year-to-Date Filing	130	133	110	97	119	+22	+22.7%	1.0%
Annual Filing	458	546	445	483				
<b>Paternity</b>								
Year-to-Date Filing	139	131	120	125	101	-24	-19.2%	0.8%
Annual Filing	528	539	512	526				
<b>ITA – Civil Commitment</b>								
Year-to-Date Filing	1020	1092	1173	1192	1155	-37	-3.1%	9.3%
Annual Filing	4152	4694	4910	4985				
<b>Juvenile Dependency (DEP)</b>								
Year-to-Date Filing	210	210	216	199	133	-66	-33.2%	1.1%
Annual Filing	727	793	787	811				
<b>Juvenile Termination (TER)</b>								
Year-to-Date Filing	44	70	85	74	62	-12	-16.2%	0.5%
Annual Filing	219	304	344	225				
<b>Juvenile ARY/CHINS/OTHERS</b>								
Year-to-Date Filing	63	52	72	42	50	+8	+19.0%	0.4%
Annual Filing	247	245	293	206				
<b>Juvenile Truancy</b>								
Year-to-Date Filing	532	499	767	659	448	-211	-32.0%	3.6%
Annual Filing	1222	1547	1925	1706				
<b>Juvenile Offender</b>								
Year-to-Date Filing	307	313	322	276	268	-8	-2.9%	2.1%
Annual Filing	1295	1324	1229	1121				
<b>Criminal RALJ</b>								
Year-to-Date Filing	40	24	30	42	34	-8	-19.0%	0.3%
Annual Filing	111	136	117	146				
<b>Civil RALJ</b>								
Year-to-Date Filing	14	14	14	11	12	+1	+9.1%	0.1%
Annual Filing	66	65	68	81				
<b>Matters Filed with Clerk <sup>(3)</sup></b>								
Year-to-Date Filing	2345	2671	2504	2402	2202	-200	-8.3%	
Annual Filing	8742	10903	9036	10030				

(1) New filings only (based on filing date).

(2) New filings of each reporting category as percentage of "Year-to-Date Filing".

(3) "Matters Filed with Clerk" are not included in the "Total".

Chart 1-A. Quarterly Filing Activity  
Total Judicial Cases Only ("Matters Filed with Clerk" excluded)

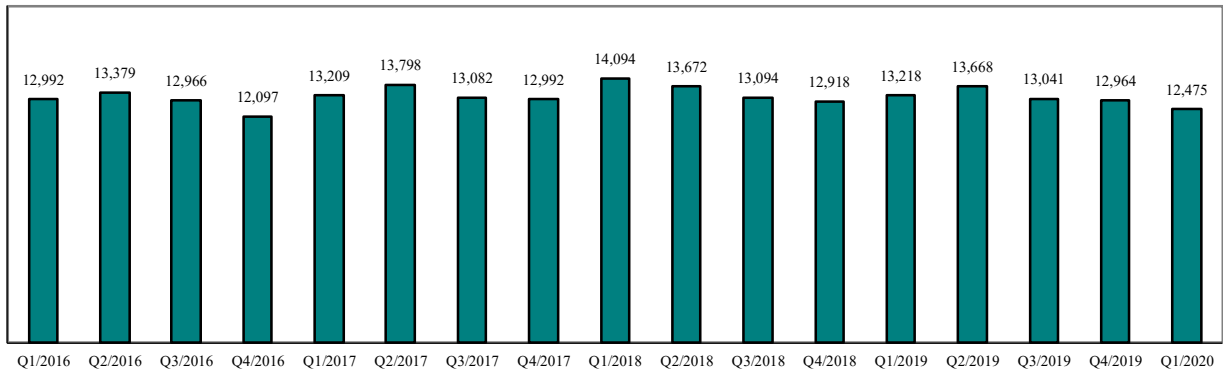
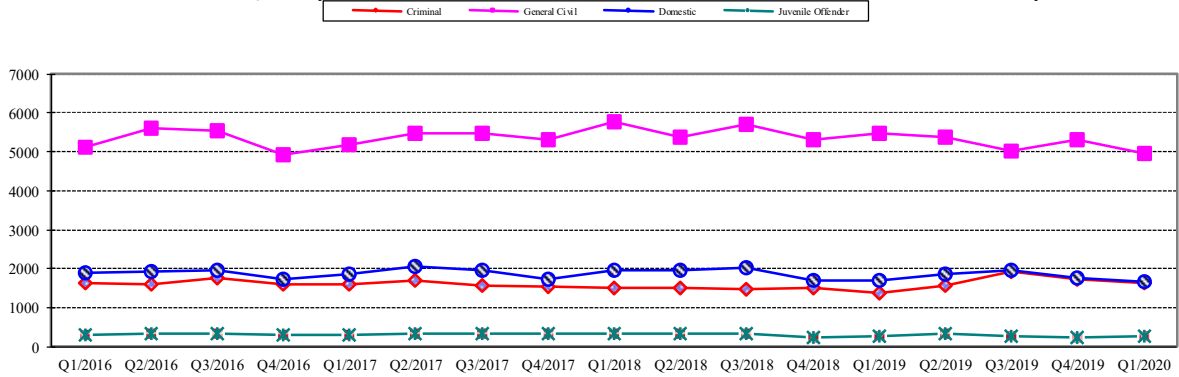


Chart 1-B. Quarterly Filings: Criminal, Domestic, General Civil and Juvenile Offender Cases Only



\* Note: "General Civil" is specifically defined in this report. The category of "General Civil" does **not** include the following case types: domestic, probate, guardianship, adoption, paternity, ITA (civil commitment), juvenile cases (dependency, at-risk youth, child-in-need of service, civil RALJ, and tax filings that don't require judicial resources ("matters filed with clerk")). Please check the Appendix for the cause codes in the "General Civil" category.

Table 1-A. Post-Resolution Modifications (Domestic and Paternity Cases)

		2018Q1			2018Q2			2018Q3			2018Q4			Year 2018		
Location	Case Type	DMOD	DTBA	Total	DMOD	DTBA	Total	DMOD	DTBA	Total	DMOD	DTBA	Total	DMOD	DTBA	Total
KNT	Domestic	207	25	232	193	50	243	168	33	201	134	22	156	702	130	832
	Paternity	15	3	18	11	6	17	16	3	19	8	1	9	50	13	63
<b>KNT Total</b>		<b>222</b>	<b>28</b>	<b>250</b>	<b>204</b>	<b>56</b>	<b>260</b>	<b>184</b>	<b>36</b>	<b>220</b>	<b>142</b>	<b>23</b>	<b>165</b>	<b>752</b>	<b>143</b>	<b>895</b>
SEA	Domestic	172	51	223	182	82	264	130	43	173	120	45	165	604	221	825
	Paternity	11	2	13	5	4	9	9	3	12	10	2	12	35	11	46
<b>SEA Total</b>		<b>183</b>	<b>53</b>	<b>236</b>	<b>187</b>	<b>86</b>	<b>273</b>	<b>139</b>	<b>46</b>	<b>185</b>	<b>130</b>	<b>47</b>	<b>177</b>	<b>639</b>	<b>232</b>	<b>871</b>
<b>KNT/SEA Total</b>		<b>405</b>	<b>81</b>	<b>486</b>	<b>391</b>	<b>142</b>	<b>533</b>	<b>323</b>	<b>82</b>	<b>405</b>	<b>272</b>	<b>70</b>	<b>342</b>	<b>1391</b>	<b>375</b>	<b>1766</b>
		2019Q1			2019Q2			2019Q3			2019Q4			Year 2019		
Location	Case Type	Reloc-ation	Parent Mod	Total	Reloc-ation	Parent Mod	Total	Reloc-ation	Parent Mod	Total	Reloc-ation	Parent Mod	Total	Reloc-ation	Parent Mod	Total
KNT	Domestic	6	66	72	15	53	68	18	64	82	5	60	65	44	243	287
	Paternity	0	11	11	0	9	9	1	14	15	0	15	15	1	49	50
<b>KNT Total</b>		<b>6</b>	<b>77</b>	<b>83</b>	<b>15</b>	<b>62</b>	<b>77</b>	<b>19</b>	<b>78</b>	<b>97</b>	<b>5</b>	<b>75</b>	<b>80</b>	<b>45</b>	<b>292</b>	<b>337</b>
SEA	Domestic	15	80	95	24	78	102	23	78	101	8	70	78	70	306	376
	Paternity	1	13	14	0	11	11	2	7	9	0	6	6	3	37	40
<b>SEA Total</b>		<b>16</b>	<b>93</b>	<b>109</b>	<b>24</b>	<b>89</b>	<b>113</b>	<b>25</b>	<b>85</b>	<b>110</b>	<b>8</b>	<b>76</b>	<b>84</b>	<b>73</b>	<b>343</b>	<b>416</b>
<b>KNT/SEA Total</b>		<b>22</b>	<b>170</b>	<b>192</b>	<b>39</b>	<b>151</b>	<b>190</b>	<b>44</b>	<b>163</b>	<b>207</b>	<b>13</b>	<b>151</b>	<b>164</b>	<b>118</b>	<b>635</b>	<b>753</b>
		2020Q1			2020Q2			2020Q3			2020Q4			Year 2020 (YTD)		
Location	Case Type	Reloc-ation	Parent Mod	Total	Reloc-ation	Parent Mod	Total	Reloc-ation	Parent Mod	Total	Reloc-ation	Parent Mod	Total	Reloc-ation	Parent Mod	Total
KNT	Domestic	5	59	64										5	59	64
	Paternity	1	11	12										1	11	12
<b>KNT Total</b>		<b>6</b>	<b>70</b>	<b>76</b>										<b>6</b>	<b>70</b>	<b>76</b>
SEA	Domestic	17	69	86										17	69	86
	Paternity	1	7	8										1	7	8
<b>SEA Total</b>		<b>18</b>	<b>76</b>	<b>94</b>										<b>18</b>	<b>76</b>	<b>94</b>
<b>KNT/SEA Total</b>		<b>24</b>	<b>146</b>	<b>170</b>										<b>24</b>	<b>146</b>	<b>170</b>

1) Prior to 2019, both parenting and support modifications were included; 2) Starting 2019, only parenting modification and relocation are included.

Table 2. Number of Cases Resolved and Resolution Category (%)

King County Superior Court

Reporting Category	Q2/18	Q3/18	Q4/18	Q1/19	Q2/19	Q3/19	Q4/19	Q1/20
<b>Total Resolutions (excl. "Matters Filed with Clerk")</b>	<b>13267</b>	<b>12698</b>	<b>12750</b>	<b>12414</b>	<b>13168</b>	<b>13115</b>	<b>13083</b>	<b>11629</b>
<b>Criminal (excl. RALJ): # Resolved</b>	<b>1438</b>	<b>1281</b>	<b>1397</b>	<b>1373</b>	<b>1439</b>	<b>1519</b>	<b>1457</b>	<b>1427</b>
Resolved by Jury Trial	2.7%	3.0%	2.7%	2.6%	3.5%	2.1%	3.6%	2.6%
Resolved by Non-Jury Trial	1.3%	0.3%	0.1%	0.3%	0.5%	0.3%	0.4%	1.0%
Resolved by Guilty Plea	77.0%	78.6%	79.8%	77.9%	78.4%	78.1%	74.0%	72.0%
Dismissal	18.6%	17.7%	17.1%	18.6%	16.7%	19.4%	21.8%	24.2%
Others	0.4%	0.3%	0.2%	0.6%	0.8%	0.2%	0.2%	0.2%
<b>Civil: # Resolved</b>	<b>5560</b>	<b>5749</b>	<b>5190</b>	<b>5093</b>	<b>5346</b>	<b>5391</b>	<b>5559</b>	<b>4671</b>
Resolved by Jury Trial	0.3%	0.4%	0.4%	0.3%	0.5%	0.4%	0.3%	0.2%
Resolved by Non-Jury Trial	0.3%	0.4%	0.3%	0.2%	0.3%	0.5%	0.3%	0.1%
Summary Judgment	1.9%	1.6%	2.5%	1.4%	1.9%	2.2%	1.4%	1.3%
Default/ Uncontested	36.9%	38.4%	33.5%	30.5%	30.4%	29.8%	30.1%	32.3%
Arbitration	3.1%	3.0%	4.1%	3.8%	3.5%	3.3%	3.3%	3.2%
Settlement/Dismissal	55.0%	53.6%	58.0%	63.0%	59.2%	61.7%	60.0%	60.3%
Closure by Clerk	1.6%	2.1%	0.4%	0.0%	3.2%	1.2%	3.7%	1.8%
Others	1.0%	0.6%	0.8%	0.9%	0.9%	0.8%	0.9%	0.8%
<b>Domestic: # Resolved</b>	<b>1861</b>	<b>1826</b>	<b>2070</b>	<b>1564</b>	<b>1912</b>	<b>1903</b>	<b>1916</b>	<b>1507</b>
Resolved by Trial	3.8%	4.9%	2.9%	3.2%	3.2%	2.8%	4.1%	3.1%
Default/ Uncontested	9.6%	10.3%	9.0%	9.3%	8.5%	8.9%	8.4%	9.6%
Settlement /Dismissal	85.1%	83.8%	87.9%	87.0%	87.3%	88.1%	86.3%	86.7%
Closure by Clerk	0.6%	0.7%	0.0%	0.0%	0.4%	0.1%	0.8%	0.3%
Others	1.0%	0.4%	0.2%	0.5%	0.5%	0.1%	0.4%	0.3%
<b>Probate: # Resolved</b>	<b>1642</b>	<b>1401</b>	<b>1503</b>	<b>1762</b>	<b>1808</b>	<b>1622</b>	<b>1572</b>	<b>1534</b>
Personal Rep. Appointed	77.2%	73.3%	73.1%	68.2%	71.8%	68.0%	67.7%	69.0%
Dismissal	1.5%	1.9%	4.5%	6.6%	6.2%	7.0%	7.8%	5.4%
Closure by Clerk	0.1%	0.0%	0.0%	0.0%	0.0%	0.0%	0.0%	0.1%
Others	21.2%	24.8%	22.4%	25.1%	22.0%	25.0%	24.6%	25.5%
<b>Guardianship: # Resolved</b>	<b>255</b>	<b>227</b>	<b>177</b>	<b>165</b>	<b>178</b>	<b>156</b>	<b>157</b>	<b>157</b>
Guardian Appointed	62.8%	59.0%	75.7%	80.6%	87.1%	86.5%	82.2%	80.9%
Dismissal	36.5%	39.7%	23.2%	18.2%	12.4%	11.5%	16.6%	18.5%
Closure by Clerk	0.8%	0.0%	0.0%	0.0%	0.0%	0.0%	0.0%	0.0%
Others	0.0%	1.3%	1.1%	1.2%	0.6%	1.9%	1.3%	0.6%
<b>Adoption: # Resolved</b>	<b>98</b>	<b>101</b>	<b>112</b>	<b>78</b>	<b>131</b>	<b>136</b>	<b>127</b>	<b>79</b>
Resolved by Trial	0.0%	0.0%	0.9%	0.0%	0.8%	0.0%	0.0%	0.0%
Uncontested	7.1%	5.0%	6.3%	12.8%	2.3%	9.6%	3.1%	7.6%
Settlement /Dismissal	92.9%	94.1%	92.9%	87.2%	96.9%	90.4%	96.1%	91.1%
Closure by Clerk	0.0%	0.0%	0.0%	0.0%	0.0%	0.0%	0.8%	0.0%
Others	0.0%	1.0%	0.0%	0.0%	0.0%	0.0%	0.0%	1.3%
<b>Paternity: # Resolved</b>	<b>125</b>	<b>132</b>	<b>129</b>	<b>107</b>	<b>146</b>	<b>129</b>	<b>129</b>	<b>98</b>
Resolved by Trial	0.8%	1.5%	0.8%	0.0%	1.4%	2.3%	0.8%	1.0%
Summary Judgment	47.2%	49.2%	47.3%	50.5%	50.7%	45.0%	44.2%	51.0%
Default/ Uncontested	24.8%	15.2%	22.5%	15.0%	19.2%	18.6%	12.4%	8.2%
Settlement/Dismissal	27.2%	32.6%	29.15%	34.6%	28.8%	34.1%	41.9%	39.8%
Closure by Clerk	0.0%	1.5%	0.0%	0.0%	0.0%	0.0%	0.0%	0.0%
Others	0.0%	0.0%	0.0%	0.0%	0.0%	0.0%	0.8%	0.0%
<b>ITA(civil commitment): # Resolved</b>	<b>1228</b>	<b>1123</b>	<b>1144</b>	<b>1271</b>	<b>1259</b>	<b>1275</b>	<b>1175</b>	<b>1123</b>
Court Decision to Commit	55.0%	58.7%	60.2%	53.5%	52.9%	53.6%	50.2%	47.9%
Closed by Court	0.0%	0.0%	0.0%	0.0%	0.0%	0.0%	0.0%	0.0%
Dismissal	13.7%	15.9%	17.4%	13.6%	12.8%	15.2%	18.6%	14.1%
Others	31.4%	25.4%	22.4%	32.9%	34.3%	31.2%	31.1%	38.0%
<b>Juv. Dependency: # Resolved</b>	<b>186</b>	<b>181</b>	<b>145</b>	<b>201</b>	<b>142</b>	<b>190</b>	<b>155</b>	<b>137</b>
Finding of Dependency	83.9%	84.0%	81.4%	82.6%	85.2%	64.7%	39.4%	48.2%
Dismissal	16.1%	15.5%	18.6%	17.4%	14.8%	34.7%	50.6%	50.4%
Others	0.0%	0.6%	0.0%	0.0%	0.0%	0.5%	0.0%	1.5%

Table 2 (cont.). Number of Cases Resolved and Resolution Category (%)

King County Superior Court

Reporting Category	Q2/18	Q3/18	Q4/18	Q1/19	Q2/19	Q3/19	Q4/19	Q1/20
<b>Juv. Terminations: # Resolved</b>	<b>72</b>	<b>63</b>	<b>71</b>	<b>58</b>	<b>58</b>	<b>34</b>	<b>37</b>	<b>40</b>
Finding of Dependency	91.7%	81.0%	87.3%	79.3%	84.5%	88.2%	64.9%	85.0%
Dismissal	8.3%	19.0%	12.7%	20.7%	15.5%	11.8%	35.1%	15.0%
Others	0.0%	0.0%	0.0%	0.0%	0.0%	0.0%	0.0%	0.0%
<b>ARY/CHINS/OTHER: # Resolved</b>	<b>60</b>	<b>62</b>	<b>36</b>	<b>43</b>	<b>49</b>	<b>50</b>	<b>41</b>	<b>29</b>
Approve of Petition	45.0%	40.3%	38.9%	67.5%	63.2%	42.0%	39.0%	13.7%
Dismissal	45.0%	59.7%	61.1%	32.5%	36.7%	58.0%	61.0%	86.2%
Others	10.0%	0.0%	0.0%	0.0%	0.0%	0.0%	0.0%	0.0%
<b>Juvenile Truancy: # Resolved</b>	<b>380</b>	<b>206</b>	<b>420</b>	<b>386</b>	<b>377</b>	<b>424</b>	<b>445</b>	<b>548</b>
Approve of Petition	3.2%	0.5%	5.2%	7.8%	8.2%	0.2%	0.2%	0.5%
Dismissal	96.8%	99.5%	94.8%	92.2%	91.8%	99.8%	99.8%	99.5%
Others	0.0%	0.0%	0.0%	0.0%	0.0%	0.0%	0.0%	0.0%
<b>Juvenile Offender: # Resolved</b>	<b>311</b>	<b>305</b>	<b>320</b>	<b>261</b>	<b>278</b>	<b>250</b>	<b>245</b>	<b>232</b>
Resolved by Trial (Fact Finding)	0.6%	1.0%	0.0%	1.5%	0.0%	0.0%	0.0%	2.2%
Resolved by Guilty Plea	31.5%	40.3%	42.2%	41.0%	34.9%	40.8%	39.6%	34.5%
Dismissal	49.5%	42.0%	35.0%	31.0%	41.7%	40.0%	36.9%	43.1%
Deferred Disposition (DDSP)	15.1%	13.4%	15.6%	11.5%	13.7%	14.8%	16.7%	11.2%
Others (including Deferred Prosecution)	3.2%	3.3%	7.2%	14.9%	9.7%	4.4%	4.1%	9.1%
<b>Criminal RALJ: # Resolved</b>	<b>38</b>	<b>27</b>	<b>21</b>	<b>35</b>	<b>32</b>	<b>26</b>	<b>41</b>	<b>22</b>
RALJ Decision	63.2%	44.4%	81.0%	68.6%	75.0%	65.4%	65.9%	86.4%
Dismissal	34.2%	48.2%	9.5%	28.6%	18.8%	26.9%	19.5%	13.6%
Others	2.6%	7.4%	9.5%	2.9%	6.3%	7.7%	14.6%	0.0%
<b>Civil RALJ: # Resolved</b>	<b>13</b>	<b>14</b>	<b>15</b>	<b>17</b>	<b>13</b>	<b>10</b>	<b>27</b>	<b>25</b>
RALJ Decision	53.9%	57.1%	40.0%	52.9%	46.2%	30.0%	37.0%	20.0%
Dismissal	38.5%	42.9%	60.0%	47.1%	53.8%	60.0%	46.1%	28.0%
Others	7.7%	0.0%	0.0%	0.0%	0.0%	10.0%	14.8%	52.0%

Chart 2-A. Quarterly Resolutions  
Total Judicial Cases Only ("Matters Filed with Clerk" excluded)

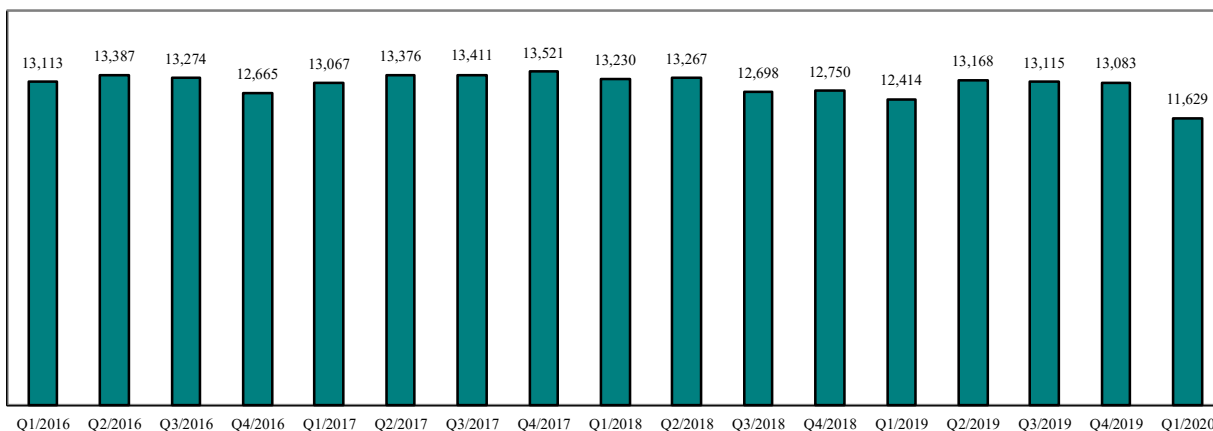
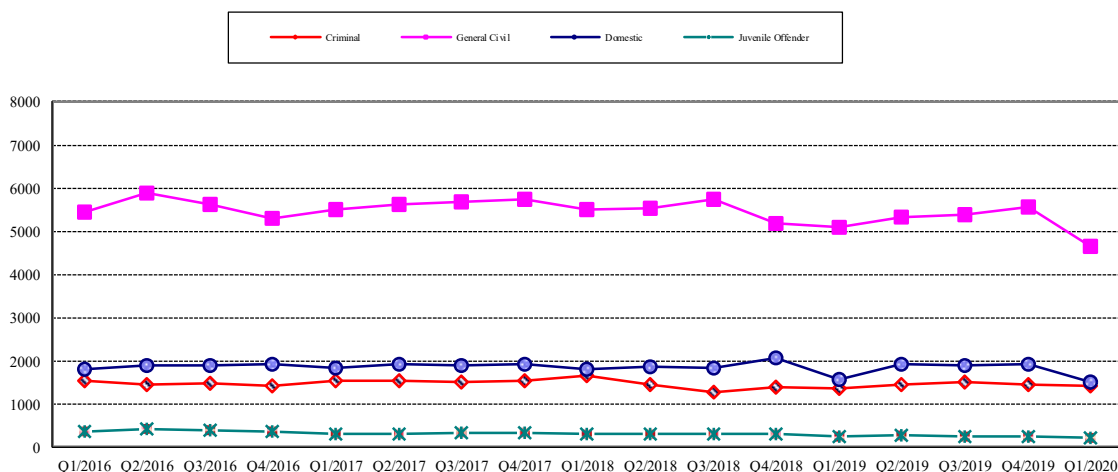


Chart 2-B. Quarterly Resolutions: Criminal, Dmestic, General Civil and Juvenile Offender Cases Only



Note: "General Civil" is specifically defined in this report. The category of "General Civil" does **not** include the following case types: domestic, probate, guardianship, adoption, paternity, mental illness, juvenile cases (dependency, at-risk youth, child-in-need of service), civil RALJ, and tax filings that don't require judicial resources ("matters filed with clerk"). Please check the Appendix for the cause codes in the "General Civil" category.



**Table 3. Age of Resolved Cases**  
*King County Superior Court*

Reporting Category	Age of Cases at Resolution							
	Q2/18	Q3/18	Q4/18	Q1/19	Q2/19	Q3/19	Q4/19	Q1/20
<b>Criminal (excl. RALJ)</b>								
Age (days)								
50% Cases Resolved by Day	129	129	132	144	127	109	104	118
90% Cases Resolved by Day	382	370	399	453	454	411	431	435
<b>Comparison with Court Standard of</b>								
90% in 4 months	48%	47%	46%	43%	49%	53%	54%	51%
98% in 6 months	63%	65%	64%	59%	61%	66%	68%	66%
100% in 9 months	79%	81%	81%	76%	76%	79%	80%	80%
<b>Civil (excl. RALJ)</b>								
Age (days)								
50% Cases Resolved by Day	36	38	46	54	58	62	64	42
90% Cases Resolved by Day	355	362	363	365	385	406	399	361
<b>Comparison with Court Standard of</b>								
90% in 12 months	91%	91%	89%	89%	88%	86%	86%	90%
98% in 18 months	98%	97%	97%	99%	97%	95%	94%	97%
100% in 24 months	99%	99%	99%	100%	100%	99%	98%	99%
<b>Domestic</b>								
Age (days)								
50% Cases Resolved by Day	156	155	139	169	190	157	149	153
90% Cases Resolved by Day	392	405	379	386	411	435	400	405
<b>Comparison with Court Standard of</b>								
90% in 8 months	65%	64%	67%	65%	62%	67%	71%	66%
98% in 10 months	74%	73%	77%	76%	74%	75%	79%	75%
100% in 14 months	92%	91%	92%	92%	90%	89%	92%	91%
<b>Probate</b>								
Age (days)								
50% Cases Resolved by Day	0	0	0	0	0	0	0	0
90% Cases Resolved by Day	7	11	20	25	25	30	30	18
<b>Comparison with Court Standard of</b>								
90% in 8 months	98%	98%	97%	97%	97%	97%	98%	98%
98% in 18 months	99%	99%	98%	98%	98%	97%	98%	99%
100% in 36 months	99%	100%	99%	99%	98%	97%	98%	99%
<b>Guardianship</b>								
Age (days)								
50% Cases Resolved by Day	57	64	59	51	54	52	59	52
90% Cases Resolved by Day	246	231	140	161	133	127	163	161
<b>Comparison with Court Standard of</b>								
90% in 8 months	89%	91%	95%	96%	96%	98%	93%	96%
98% in 18 months	98%	95%	97%	100%	99%	99%	98%	99%
100% in 36 months	99%	100%	97%	100%	99%	99%	99%	99%
<b>Adoption</b>								
Age (days)								
50% Cases Resolved by Day	84	77	54	38	30	38	35	36
90% Cases Resolved by Day	227	344	207	262	274	227	156	257
<b>Comparison with Court Standard of</b>								
90% in 8 months	92%	87%	90%	89%	87%	92%	95%	89%
98% in 10 months	95%	89%	93%	92%	92%	95%	98%	94%
100% in 14 months	97%	91%	97%	96%	99%	97%	99%	96%
<b>Paternity</b>								
Age (days)								
50% Cases Resolved by Day	127	129	140	158	164	131	121	152
90% Cases Resolved by Day	304	320	298	298	315	297	316	354
<b>Comparison with Court Standard of</b>								
90% in 8 months	77%	78%	79%	79%	74%	79%	83%	76%
98% in 10 months	89%	85%	91%	93%	88%	90%	89%	87%
100% in 14 months	97%	96%	96%	100%	96%	93%	97%	95%

Table 3 (cont.) Age of Resolved Cases

King County Superior Court

Reporting Category	Age of Cases at Resolution							
	Q2/18	Q3/18	Q4/18	Q1/19	Q2/19	Q3/19	Q4/19	Q1/20
<b>ITA (civil commitment) *</b>								
Age (days)								
50% Cases Resolved by Day	5	4	4	6	6	6	7	9
90% Cases Resolved by Day	36	22	20	59	24	22	27	32
<b>Juvenile Dependency (DEP)</b>								
Age (days)								
50% Cases Resolved by Day	122	103	116	128	105	116	211	198
90% Cases Resolved by Day	268	199	360	321	217	292	1056	618
<b>Comparison with Court Standard of</b>								
90% in 8 months	88%	94%	76%	78%	91%	86%	54%	66%
98% in 10 months	93%	99%	89%	87%	93%	90%	62%	78%
100% in 14 months	99%	100%	91%	93%	94%	94%	73%	86%
<b>Juvenile Termination (TER)</b>								
Age (days)								
50% Cases Resolved by Day	83	157	150	161	171	171	190	83
90% Cases Resolved by Day	333	501	269	467	329	377	375	523
<b>Comparison with Court Standard of</b>								
90% in 8 months	84%	67%	86%	64%	72%	74%	63%	80%
98% in 10 months	89%	75%	93%	81%	90%	80%	71%	80%
100% in 14 months	96%	84%	99%	87%	95%	95%	98%	83%
<b>Juv ARY/CHINS/OTHER</b>								
Age (days)								
50% Cases Resolved by Day	39	63	34	30	30	41	50	66
90% Cases Resolved by Day	220	240	228	119	226	230	238	251
<b>Comparison with Court Standard of</b>								
90% in 8 months	95%	91%	95%	100%	96%	92%	91%	86%
98% in 10 months	95%	95%	100%	100%	98%	96%	93%	100%
100% in 14 months	100%	97%	100%	100%	100%	98%	95%	100%
<b>Juvenile Truancy*</b>								
Age (days)								
50% Cases Resolved by Day	370	305	289	366	378	468	327	406
90% Cases Resolved by Day	703	607	470	544	623	616	700	1112
<b>Juvenile Offender</b>								
Age (days)								
50% Cases Resolved by Day	99	116	115	122	116	140	140	133
90% Cases Resolved by Day	358	327	260	285	345	307	385	331
<b>Comparison with Court Standard of</b>								
90% in 4 months	59%	52%	54%	49%	52%	43%	47%	47%
98% in 6 months	77%	71%	79%	68%	68%	66%	65%	54%
100% in 9 months	86%	86%	91%	88%	84%	84%	84%	82%
<b>Criminal RALJ</b>								
Age (days)								
50% Cases Resolved by Day	272	247	331	364	233	216	302	331
90% Cases Resolved by Day	574	444	519	588	493	500	716	490
<b>Civil RALJ</b>								
Age (days)								
50% Cases Resolved by Day	164	176	162	194	166	167	171	108
90% Cases Resolved by Day	221	333	386	291	259	210	324	323

\* No standard yet.

Table 4. Active Pending Caseload Statistics

King County Superior Court

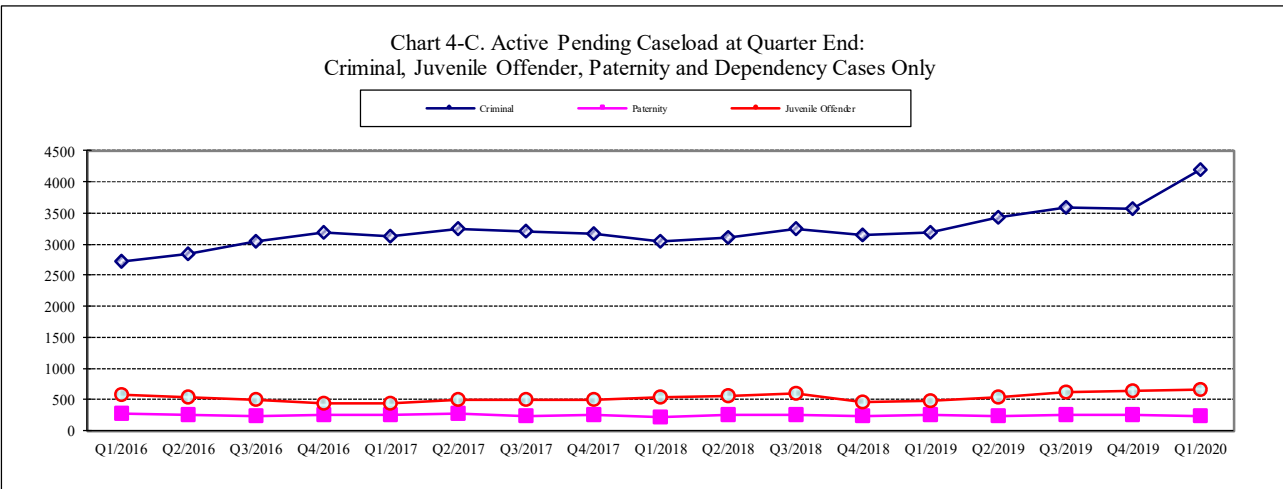
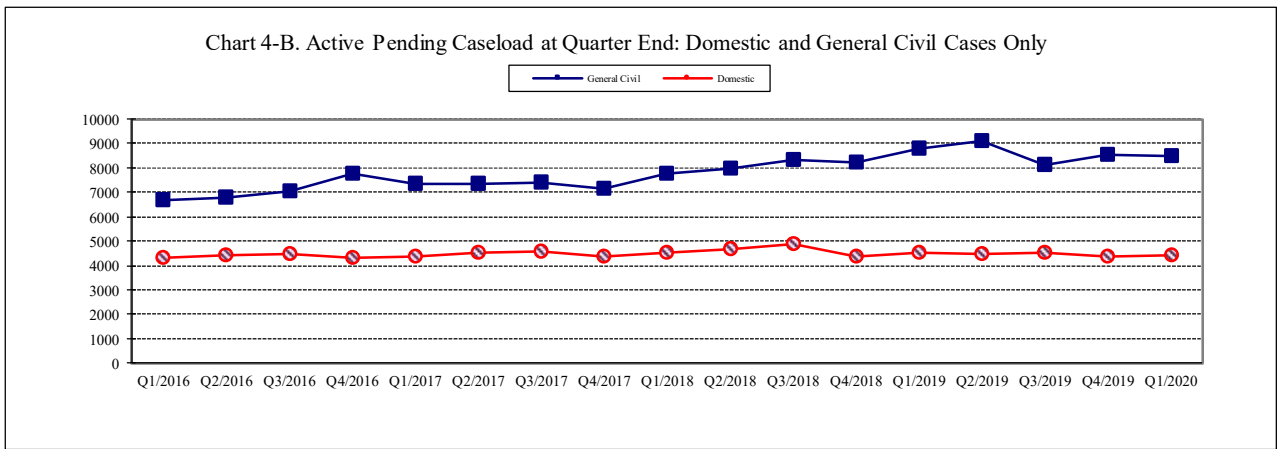
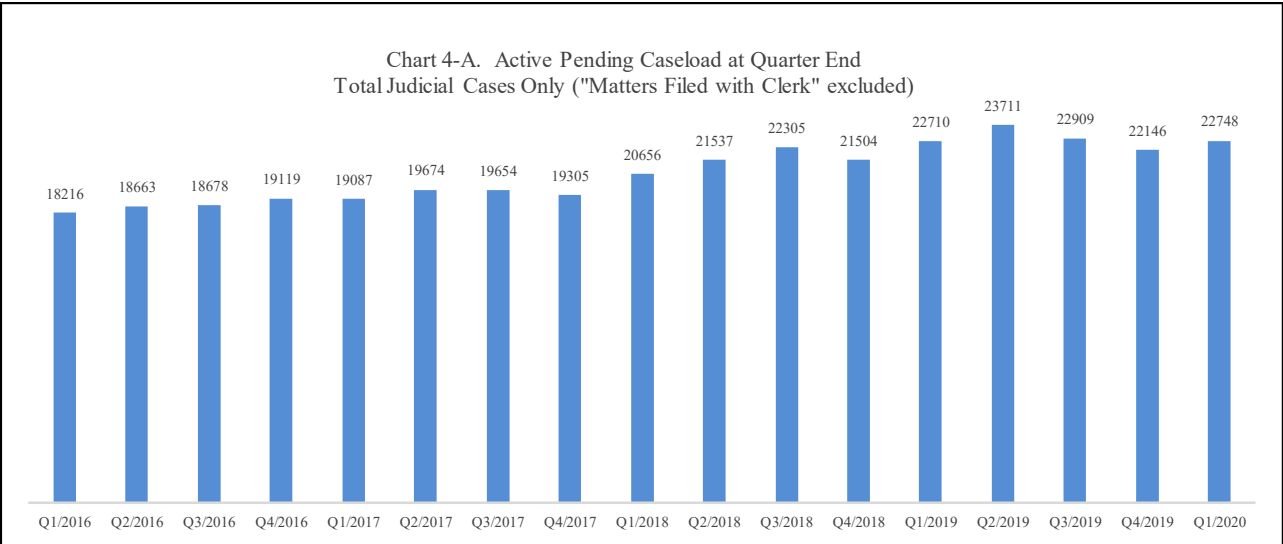
Reporting Category		Q2/18	Q3/18	Q4/18	Q1/19	Q2/19	Q3/19	Q4/19	Q1/20
<b>Total (incl. RALJ)</b>									
Previous Pending	(+)	20656	21537	22305	12750	12414	13168	13115	22146
New Filing	(+)	13672	13094	12918	13218	13666	13041	12964	12475
Resolved	(-)	13267	12698	12750	12414	13168	13115	13083	11629
<b>End Pending</b>		<b>21537</b>	<b>22305</b>	<b>21504</b>	<b>22710</b>	<b>23711</b>	<b>22909</b>	<b>22146</b>	<b>22748</b>
<b>Resolution Rate*</b>		<b>0.970</b>	<b>0.970</b>	<b>0.987</b>	<b>0.939</b>	<b>0.964</b>	<b>1.006</b>	<b>1.009</b>	<b>0.932</b>
<b>Criminal (excl. RALJ)</b>									
Previous Pending	(+)	3048	3113	3247	3150	3176	3420	3579	3564
New Filing	(+)	1512	1460	1508	1362	1575	1928	1742	1628
Resolved	(-)	1438	1281	1397	1373	1439	1519	1457	1427
<b>End Pending</b>		<b>3113</b>	<b>3247</b>	<b>3150</b>	<b>3176</b>	<b>3420</b>	<b>3579</b>	<b>3564</b>	<b>4188</b>
<b>Resolution Rate*</b>		<b>0.951</b>	<b>0.877</b>	<b>0.926</b>	<b>1.008</b>	<b>0.914</b>	<b>0.788</b>	<b>0.836</b>	<b>0.877</b>
<b>Civil (excl. RALJ)</b>									
Previous Pending	(+)	7814	8026	8366	8243	8813	9135	8152	8576
New Filing	(+)	5399	5714	5308	5480	5373	5031	5318	4981
Resolved	(-)	5560	5749	5189	5093	5346	5391	5559	4671
<b>End Pending</b>		<b>8026</b>	<b>8366</b>	<b>8243</b>	<b>8813</b>	<b>9135</b>	<b>8152</b>	<b>8576</b>	<b>8515</b>
<b>Resolution Rate*</b>		<b>1.030</b>	<b>1.006</b>	<b>0.978</b>	<b>0.929</b>	<b>0.995</b>	<b>1.072</b>	<b>1.045</b>	<b>0.938</b>
<b>Domestic</b>									
Previous Pending	(+)	4547	4683	4886	4381	4529	4478	4516	4384
New Filing	(+)	1944	2035	1694	1697	1863	1956	1764	1682
Resolved	(-)	1861	1826	2070	1564	1912	1903	1916	1507
<b>End Pending</b>		<b>4683</b>	<b>4886</b>	<b>4381</b>	<b>4529</b>	<b>4478</b>	<b>4516</b>	<b>4384</b>	<b>4431</b>
<b>Resolution Rate*</b>		<b>0.957</b>	<b>0.897</b>	<b>1.222</b>	<b>0.922</b>	<b>1.026</b>	<b>0.973</b>	<b>1.086</b>	<b>0.896</b>
<b>Probate</b>									
Previous Pending	(+)	1027	1102	1161	1146	1235	1476	1545	690
New Filing	(+)	1694	1432	1569	1762	1820	1621	1601	1622
Resolved	(-)	1642	1401	1503	1762	1808	1622	1572	1534
<b>End Pending</b>		<b>1102</b>	<b>1161</b>	<b>1146</b>	<b>1235</b>	<b>1476</b>	<b>1545</b>	<b>690</b>	<b>778</b>
<b>Resolution Rate*</b>		<b>0.969</b>	<b>0.978</b>	<b>0.958</b>	<b>1.000</b>	<b>0.993</b>	<b>1.001</b>	<b>0.982</b>	<b>0.946</b>
<b>Guardianship</b>									
Previous Pending	(+)	361	380	371	409	509	377	429	235
New Filing	(+)	257	213	246	200	170	189	147	180
Resolved	(-)	255	227	177	165	178	156	157	157
<b>End Pending</b>		<b>380</b>	<b>371</b>	<b>409</b>	<b>509</b>	<b>377</b>	<b>429</b>	<b>235</b>	<b>240</b>
<b>Resolution Rate*</b>		<b>0.992</b>	<b>1.066</b>	<b>0.720</b>	<b>0.825</b>	<b>1.047</b>	<b>0.825</b>	<b>1.068</b>	<b>0.872</b>
<b>Adoption</b>									
Previous Pending	(+)	158	170	171	174	197	205	196	184
New Filing	(+)	110	102	126	97	139	133	114	119
Resolved	(-)	98	101	112	78	131	136	127	79
<b>End Pending</b>		<b>170</b>	<b>171</b>	<b>174</b>	<b>197</b>	<b>205</b>	<b>196</b>	<b>184</b>	<b>220</b>
<b>Resolution Rate*</b>		<b>0.891</b>	<b>0.990</b>	<b>0.889</b>	<b>0.804</b>	<b>0.942</b>	<b>1.023</b>	<b>1.114</b>	<b>0.664</b>
<b>Paternity</b>									
Previous Pending	(+)	224	252	256	225	246	242	253	251
New Filing	(+)	149	138	102	125	140	137	124	101
Resolved	(-)	125	132	129	107	146	129	129	98
<b>End Pending</b>		<b>252</b>	<b>256</b>	<b>225</b>	<b>246</b>	<b>242</b>	<b>253</b>	<b>251</b>	<b>239</b>
<b>Resolution Rate*</b>		<b>0.839</b>	<b>0.957</b>	<b>1.265</b>	<b>0.856</b>	<b>1.043</b>	<b>0.942</b>	<b>1.040</b>	<b>0.970</b>
<b>ITA (civil commitment)</b>									
Previous Pending	(+)	186	191	310	283	206	201	246	288
New Filing	(+)	1234	1244	1259	1192	1254	1320	1219	1155
Resolved	(-)	1228	1123	1144	1271	1259	1275	1175	1123
<b>End Pending</b>		<b>191</b>	<b>310</b>	<b>283</b>	<b>206</b>	<b>201</b>	<b>246</b>	<b>288</b>	<b>263</b>
<b>Resolution Rate*</b>		<b>0.995</b>	<b>0.903</b>	<b>0.909</b>	<b>1.066</b>	<b>1.004</b>	<b>0.966</b>	<b>0.964</b>	<b>0.972</b>

\* A value of "Resolution Rate" less than one indicates the resolution pace is slower than the filing pace.

Table 4 (cont.) Active Pending Caseload Statistics  
King County Superior Court

Reporting Category	Q2/18	Q3/18	Q4/18	Q1/19	Q2/19	Q3/19	Q4/19	Q1/20
<b>Juvenile Dependency (DEP)</b>								
Previous Pending (+)	392	406	411	434	428	590	587	647
New Filing (+)	195	186	193	199	227	193	192	133
Resolved (-)	186	181	145	201	142	190	155	137
<b>End Pending</b>	<b>406</b>	<b>411</b>	<b>434</b>	<b>428</b>	<b>590</b>	<b>587</b>	<b>647</b>	<b>638</b>
<b>Resolution Rate*</b>	<b>0.954</b>	<b>0.973</b>	<b>0.751</b>	<b>1.010</b>	<b>0.626</b>	<b>0.984</b>	<b>0.807</b>	<b>1.030</b>
<b>Juvenile Termination (TER)</b>								
Previous Pending (+)	189	209	231	244	260	241	248	277
New Filing (+)	92	85	82	74	39	45	67	62
Resolved (-)	72	63	71	58	58	34	37	40
<b>End Pending</b>	<b>209</b>	<b>231</b>	<b>244</b>	<b>260</b>	<b>241</b>	<b>248</b>	<b>277</b>	<b>297</b>
<b>Resolution Rate*</b>	<b>0.783</b>	<b>0.741</b>	<b>0.866</b>	<b>0.784</b>	<b>1.487</b>	<b>0.756</b>	<b>0.552</b>	<b>0.645</b>
<b>Juv ARY/CHINS/OTHERS</b>								
Previous Pending (+)	120	130	128	146	152	86	97	100
New Filing (+)	71	58	85	42	63	57	44	50
Resolved (-)	60	62	36	43	49	50	41	29
<b>End Pending</b>	<b>130</b>	<b>128</b>	<b>146</b>	<b>152</b>	<b>86</b>	<b>97</b>	<b>100</b>	<b>119</b>
<b>Resolution Rate*</b>	<b>0.845</b>	<b>1.069</b>	<b>0.424</b>	<b>1.024</b>	<b>0.778</b>	<b>0.877</b>	<b>0.932</b>	<b>0.580</b>
<b>Juvenile Truancy</b>								
Previous Pending (+)	1899	2172	2017	2041	2313	2556	2244	2112
New Filing (+)	651	45	461	659	620	109	318	448
Resolved (-)	380	206	420	386	377	424	445	548
<b>End Pending</b>	<b>2172</b>	<b>2017</b>	<b>2041</b>	<b>2313</b>	<b>2556</b>	<b>2244</b>	<b>2112</b>	<b>1976</b>
<b>Resolution Rate*</b>	<b>0.584</b>	<b>4.578</b>	<b>0.911</b>	<b>0.586</b>	<b>0.608</b>	<b>3.890</b>	<b>1.399</b>	<b>1.223</b>
<b>Juvenile Offender</b>								
Previous Pending (+)	532	554	595	464	479	539	614	647
New Filing (+)	323	335	241	276	333	273	239	268
Resolved (-)	311	305	320	261	278	250	245	232
<b>End Pending</b>	<b>554</b>	<b>595</b>	<b>464</b>	<b>479</b>	<b>539</b>	<b>614</b>	<b>647</b>	<b>659</b>
<b>Resolution Rate*</b>	<b>0.963</b>	<b>0.910</b>	<b>1.328</b>	<b>0.946</b>	<b>0.835</b>	<b>0.916</b>	<b>1.025</b>	<b>0.866</b>
<b>Criminal RALJ</b>								
Previous Pending (+)	124	111	118	126	133	129	136	140
New Filing (+)	25	34	28	42	27	33	44	34
Resolved (-)	38	27	21	35	32	26	41	22
<b>End Pending</b>	<b>111</b>	<b>118</b>	<b>126</b>	<b>133</b>	<b>129</b>	<b>136</b>	<b>140</b>	<b>147</b>
<b>Resolution Rate*</b>	<b>1.520</b>	<b>0.794</b>	<b>0.750</b>	<b>0.833</b>	<b>1.185</b>	<b>0.788</b>	<b>0.932</b>	<b>0.647</b>
<b>Civil RALJ</b>								
Previous Pending (+)	35	38	37	38	34	36	47	51
New Filing (+)	16	13	16	11	23	16	31	12
Resolved (-)	13	14	15	17	13	10	27	25
<b>End Pending</b>	<b>38</b>	<b>37</b>	<b>38</b>	<b>34</b>	<b>36</b>	<b>47</b>	<b>51</b>	<b>38</b>
<b>Resolution Rate*</b>	<b>0.813</b>	<b>1.077</b>	<b>0.938</b>	<b>1.545</b>	<b>0.565</b>	<b>0.625</b>	<b>0.871</b>	<b>2.083</b>

\* A value of "Resolution Rate" less than one indicates the resolution pace is slower than the filing pace.



Note: "General Civil" is specifically defined in this report. The category of "General Civil" does **not** include the following case types: domestic, probate, guardianship, adoption, paternity, mental illness, juvenile cases (dependency, at-risk youth, child-in-need of service), civil RALJ, and tax filings that don't require judicial resources ("matters filed with clerk"). Please check the Appendix for the cause codes in the "General Civil" category.

Table 5. Age of Pending Cases

King County Superior Court

Reporting Category	Age of Pending Cases and # of Cases in Each Age Interval							
	Q2/18	Q3/18	Q4/18	Q1/19	Q2/19	Q3/19	Q4/19	Q1/20
<b>Criminal (excl. RALJ): # of Cases</b>	<b>3113</b>	<b>3247</b>	<b>3150</b>	<b>3176</b>	<b>3420</b>	<b>3579</b>	<b>3564</b>	<b>4148</b>
<b>Age (days)</b>								
Median (50 percentile)	114	124	132	135	107	95	105	92
90 percentile	567	573	450	445	418	433	430	365
<b># of Cases in Age Interval</b>								
0 - 60 days (0 - 2 months)	967	842	814	1023	1232	1330	1169	1710
61 - 120 days (3 - 4 months)	647	757	655	524	592	724	789	747
121 - 180 days (5 - 6 months)	434	455	483	415	440	390	473	513
181 - 270 days (7 - 9 months)	413	459	439	455	409	409	414	525
> 270 days (> 9 months)	652	734	759	759	747	726	719	693
<b>Civil (excl. RALJ): # of Cases</b>	<b>8026</b>	<b>8366</b>	<b>8243</b>	<b>8813</b>	<b>9135</b>	<b>8152</b>	<b>8576</b>	<b>8515</b>
<b>Age (days)</b>								
Median (50 percentile)	136	145	143	138	137	158	146	153
90 percentile	492	502	405	426	433	418	399	420
<b># of Cases in Age Interval</b>								
0 - 120 days (0 - 4 months)	3682	3684	3725	3994	4078	3314	3808	3483
121 - 240 days (5 - 8 months)	2181	796	1908	2188	2328	2292	2172	2357
241 - 360 days (9 - 12 months)	1219	395	1550	1263	1436	1430	1464	1388
361 - 540 days (13 - 18 months)	640	279	733	938	830	656	771	891
541 - 720 days (19 - 24 months)	182	115	194	275	303	307	202	228
> 720 days (> 24 months)	118	89	133	155	160	173	160	168
<b>Domestic: # of Cases</b>	<b>4683</b>	<b>4886</b>	<b>4381</b>	<b>4529</b>	<b>4478</b>	<b>4516</b>	<b>4384</b>	<b>4431</b>
<b>Age (days)</b>								
Median (50 percentile)	121	125	136	145	118	117	131	144
90 percentile	754	752	443	471	474	460	477	468
<b># of Cases in Age Interval</b>								
0 - 120 days (0 - 4 months)	2324	2361	2004	2017	2252	2303	2087	1990
121 - 240 days (5 - 8 months)	1112	1298	1152	1188	969	1082	1105	1213
241 - 360 days (9 - 12 months)	625	606	627	618	569	476	569	593
361 - 540 days (13 - 18 months)	264	279	267	342	319	289	243	258
> 540 days (> 18 months)	358	342	331	364	369	366	380	377
<b>Probate: # of Cases</b>	<b>1102</b>	<b>1161</b>	<b>1146</b>	<b>1235</b>	<b>1476</b>	<b>1545</b>	<b>690</b>	<b>778</b>
<b>Age (days)</b>								
Median (50 percentile)	418	465	480	517	517	570	347	298
90 percentile	1746	1816	1623	1648	1612	1672	1640	1623
<b># of Cases in Age Interval</b>								
0 - 120 days (0 - 4 months)	185	163	204	202	288	247	220	257
121 - 240 days (5 - 8 months)	186	151	108	146	160	173	83	109
241 - 360 days (9 - 12 months)	132	171	135	101	131	164	50	58
361 - 540 days (13 - 18 months)	156	152	177	191	196	162	65	63
> 540 days (> 18 months)	443	524	522	595	701	799	272	291
<b>Guardianship: # of Cases</b>	<b>380</b>	<b>371</b>	<b>409</b>	<b>509</b>	<b>377</b>	<b>429</b>	<b>235</b>	<b>240</b>
<b>Age (days)</b>								
Median (50 percentile)	104	124	125	118	177	241	133	139
90 percentile	700	742	612	650	741	797	881	976
<b># of Cases in Age Interval</b>								
0 - 120 days (0 - 4 months)	199	180	204	255	125	155	115	115
121 - 240 days (5 - 8 months)	59	51	58	84	117	57	24	32
241 - 360 days (9 - 12 months)	40	53	39	43	32	98	25	8
361 - 540 days (13 - 18 months)	40	41	53	57	27	33	19	28
> 540 days (> 18 months)	42	46	55	70	76	86	52	57

Table 5 (cont.). Age of Pending Cases

King County Superior Court

Reporting Category	Age of Pending Cases and # of Cases in Each Age Interval							
	Q2/18	Q3/18	Q4/18	Q1/19	Q2/19	Q3/19	Q4/19	Q1/20
<b>Adoption: # of Cases</b>	<b>170</b>	<b>171</b>	<b>174</b>	<b>197</b>	<b>205</b>	<b>196</b>	<b>184</b>	<b>220</b>
<b>Age (days)</b>								
Median (50 percentile)	118	129	136	149	159	198	291	225
90 percentile	650	607	522	612	691	795	887	966
<b># of Cases in Age Interval</b>								
0 - 120 days (0 - 4 months)	85	82	81	83	87	76	53	81
121 - 240 days (5 - 8 months)	26	30	37	44	41	32	30	31
241 - 360 days (9 - 12 months)	28	17	9	23	21	30	22	18
361 - 540 days (13 - 18 months)	19	32	31	13	13	17	30	37
> 540 days (> 18 months)	12	10	16	34	43	41	49	53
<b>Paternity: # of Cases</b>	<b>252</b>	<b>256</b>	<b>225</b>	<b>246</b>	<b>242</b>	<b>253</b>	<b>251</b>	<b>239</b>
<b>Age (days)</b>								
Median (50 percentile)	89	98	115	102	83	94	105	126
90 percentile	373	416	271	306	270	270	300	335
<b># of Cases in Age Interval</b>								
0 - 120 days (0 - 4 months)	153	145	117	143	156	158	137	117
121 - 240 days (5 - 8 months)	62	76	74	61	57	58	69	75
241 - 360 days (9 - 12 months)	24	18	25	26	11	22	25	29
361 - 540 days (13 - 18 months)	8	11	6	11	13	9	10	12
> 540 days (> 18 months)	5	6	3	5	5	6	10	6
<b>ITA (civil commitment): # of Cases</b>	<b>191</b>	<b>310</b>	<b>283</b>	<b>206</b>	<b>201</b>	<b>246</b>	<b>288</b>	<b>263</b>
<b>Age (days)</b>								
Median (50 percentile)	13	46	28	13	18	14	20	56
90 percentile	307	339	179	220	307	371	420	511
<b># of Cases in Age Interval</b>								
0 - 120 days (0 - 4 months)	166	266	211	169	149	188	219	179
121 - 240 days (5 - 8 months)	9	23	57	17	24	10	14	27
> 240 days (> 8 months)	16	21	15	20	28	48	55	57
<b>Juv Dependency (DEP): # of Cases</b>	<b>406</b>	<b>411</b>	<b>434</b>	<b>428</b>	<b>590</b>	<b>587</b>	<b>647</b>	<b>638</b>
<b>Age (days)</b>								
Median (50 percentile)	112	157	139	118	150	194	195	242
90 percentile	478	570	510	571	631	713	784	847
<b># of Cases in Age Interval</b>								
0 - 60 days (0 - 2 months)	101	109	126	135	139	112	121	84
61 - 120 days (3 - 4 months)	113	74	71	85	106	118	95	88
121 - 180 days (5 - 6 months)	53	55	64	40	76	48	82	86
181 - 270 days (7 - 9 months)	44	44	60	37	75	81	99	88
> 270 days (> 9 months)	95	129	113	131	194	228	250	292
<b>Juv Termination (TER): # of Cases</b>	<b>209</b>	<b>231</b>	<b>244</b>	<b>260</b>	<b>241</b>	<b>248</b>	<b>277</b>	<b>297</b>
<b>Age (days)</b>								
Median (50 percentile)	129	136	170	188	269	329	340	389
90 percentile	514	563	508	555	646	738	809	879
<b># of Cases in Age Interval</b>								
0 - 60 days (0 - 2 months)	66	61	51	47	28	31	46	38
61 - 120 days (3 - 4 months)	35	42	40	40	23	18	30	32
121 - 180 days (5 - 6 months)	27	43	37	37	33	19	21	27
181 - 270 days (7 - 9 months)	35	28	47	45	38	37	15	30
> 270 days (> 9 months)	46	57	69	91	119	143	165	170
<b>ARY/CHINS/OTHER: # of Cases</b>	<b>130</b>	<b>128</b>	<b>146</b>	<b>152</b>	<b>86</b>	<b>97</b>	<b>100</b>	<b>119</b>
<b>Age (days)</b>								
Median (50 percentile)	160	222	132	200	174	132	188	188
90 percentile	678	770	543	632	646	719	811	900
<b># of Cases in Age Interval</b>								
0 - 60 days (0 - 2 months)	24	24	42	30	33	28	20	27
61 - 120 days (3 - 4 months)	26	14	25	14	6	19	16	18
121 - 180 days (5 - 6 months)	20	7	16	28	5	7	11	13
181 - 270 days (7 - 9 months)	25	31	10	20	6	5	13	12
> 270 days (> 9 months)	35	52	53	60	36	38	40	49

Table 5 (cont.). Age of Pending Cases

King County Superior Court

Reporting Category	Age of Pending Cases and # of Cases in Each Age Interval							
	Q2/18	Q3/18	Q4/18	Q1/19	Q2/19	Q3/19	Q4/19	Q1/20
<b>Juvenile Truancy: # of Cases</b>	<b>2172</b>	<b>2017</b>	<b>2041</b>	<b>2313</b>	<b>2556</b>	<b>2244</b>	<b>2112</b>	<b>1976</b>
<b>Age (days)</b>								
Median (50 percentile)	142	223	278	290	194	251	300	315
90 percentile	577	661	615	688	613	706	769	718
<b># of Cases in Age Interval</b>								
0 - 60 days (0 - 2 months)	411	15	385	446	419	63	240	290
61 - 120 days (3 - 4 months)	484	211	80	416	428	248	70	259
121 - 180 days (5 - 6 months)	445	404	21	195	360	342	92	154
181 - 270 days (7 - 9 months)	344	678	482	31	367	585	425	88
> 270 days (> 9 months)	488	709	1073	1225	982	1006	1285	1185
<b>Juvenile Offender: # of Cases</b>	<b>554</b>	<b>595</b>	<b>464</b>	<b>479</b>	<b>539</b>	<b>614</b>	<b>647</b>	<b>659</b>
<b>Age (days)</b>								
Median (50 percentile)	95	94	116	116	101	110	144	145
90 percentile	522	486	300	362	355	405	459	475
<b># of Cases in Age Interval</b>								
0 - 60 days (0 - 2 months)	200	189	119	157	163	173	164	154
61 - 120 days (3 - 4 months)	122	168	125	88	138	151	124	148
121 - 180 days (5 - 6 months)	63	78	101	70	75	108	104	75
181 - 270 days (7 - 9 months)	69	53	56	80	55	71	124	106
> 270 days (> 9 months)	100	107	63	84	108	111	131	176
<b>Criminal RALJ: # of Cases</b>	<b>111</b>	<b>118</b>	<b>126</b>	<b>133</b>	<b>129</b>	<b>136</b>	<b>140</b>	<b>147</b>
<b>Age (days)</b>								
Median (50 percentile)	191	192	191	170	178	212	174	179
90 percentile	1038	1130	577	592	683	706	609	643
<b># of Cases in Age Interval</b>								
0 - 60 days (0 - 2 months)	20	25	21	25	17	25	30	24
61 - 120 days (3 - 4 months)	16	17	23	28	21	14	28	30
121 - 180 days (5 - 6 months)	17	12	16	16	29	17	15	20
181 - 270 days (7 - 9 months)	21	22	18	23	21	29	16	24
> 270 days (> 9 months)	37	42	48	41	41	51	51	49
<b>Civil RALJ: # of Cases</b>	<b>38</b>	<b>37</b>	<b>38</b>	<b>34</b>	<b>36</b>	<b>47</b>	<b>51</b>	<b>38</b>
<b>Age (days)</b>								
Median (50 percentile)	107	119	109	98	118	108	61	115
90 percentile	474	566	277	289	355	298	239	288
<b># of Cases in Age Interval</b>								
0 - 60 days (0 - 2 months)	15	8	15	6	8	10	25	9
61 - 120 days (3 - 4 months)	5	11	6	16	10	14	10	14
121 - 180 days (5 - 6 months)	10	9	5	6	8	11	7	6
181 - 270 days (7 - 9 months)	4	4	8	2	6	4	5	5
> 270 days (> 9 months)	4	5	4	4	4	8	4	4



Table 6. Seattle vs. Regional Justice Center (KNT): Filing, Resolution, Pending Caseload (%)

King County Superior Court

	Q1/19		Q2/19		Q3/19		Q4/19		Q1/20	
	SEA	KNT	SEA	KNT	SEA	KNT	SEA	KNT	SEA	KNT
<b>Filings Total</b> <i>(excl. filings with clerk)</i>	<b>62%</b>	<b>38%</b>	<b>64%</b>	<b>36%</b>	<b>64%</b>	<b>36%</b>	<b>64%</b>	<b>36%</b>	<b>63%</b>	<b>37%</b>
Criminal (excl. RALJ)	57%	43%	61%	39%	61%	39%	63%	37%	61%	39%
Civil (excl. RALJ)	52%	48%	56%	44%	55%	45%	55%	45%	54%	46%
Domestic	59%	41%	58%	42%	59%	41%	57%	43%	61%	39%
Probate	72%	28%	74%	26%	70%	30%	71%	29%	73%	27%
Guardianship	66%	34%	58%	42%	64%	36%	67%	33%	64%	36%
Adoption	60%	40%	65%	35%	72%	28%	68%	32%	70%	30%
Paternity	46%	54%	49%	51%	44%	56%	41%	59%	46%	55%
ITA (civil commitment)	100%	0%	100%	0%	100%	0%	100%	0%	100%	0%
Juv. Dependency (DEP)	62%	38%	62%	38%	56%	44%	69%	31%	62%	38%
Juv. Termination (TER)	61%	39%	69%	31%	64%	36%	61%	39%	63%	37%
Juvenile ARY/CHINS/Other	29%	71%	52%	48%	53%	47%	50%	50%	50%	50%
Juvenile Truancy	43%	57%	41%	59%	50%	50%	53%	47%	32%	68%
Juvenile Offender	100%	0%	100%	0%	100%	0%	100%	0%	100%	0%
Criminal RALJ	95%	5%	85%	15%	73%	27%	95%	5%	82%	18%
Civil RALJ	82%	18%	96%	4%	88%	13%	84%	16%	92%	8%
<b>Resolution Total</b> <i>(excl. filings with clerk)</i>	<b>63%</b>	<b>37%</b>	<b>63%</b>	<b>37%</b>	<b>63%</b>	<b>37%</b>	<b>62%</b>	<b>38%</b>	<b>62%</b>	<b>38%</b>
Criminal (excl. RALJ)	57%	43%	59%	41%	58%	42%	58%	42%	58%	42%
Civil (excl. RALJ)	53%	47%	54%	46%	54%	46%	53%	47%	54%	46%
Domestic	59%	41%	58%	42%	58%	42%	59%	41%	58%	42%
Probate	71%	29%	75%	25%	71%	29%	71%	29%	74%	26%
Guardianship	70%	30%	61%	39%	61%	39%	69%	31%	67%	33%
Adoption	76%	24%	66%	34%	71%	29%	69%	31%	65%	35%
Paternity	40%	60%	48%	52%	40%	60%	58%	42%	42%	58%
ITA (civil commitment)	100%	0%	100%	0%	100%	0%	100%	0%	100%	0%
Juv. Dependency (DEP)	65%	35%	67%	33%	55%	45%	61%	39%	69%	31%
Juv. Termination (TER)	66%	34%	60%	40%	74%	26%	59%	41%	58%	43%
Juvenile ARY/CHINS/Other	35%	65%	35%	65%	56%	44%	59%	41%	66%	35%
Juvenile Truancy	49%	51%	33%	67%	50%	50%	41%	59%	51%	49%
Juvenile Offender	100%	0%	100%	0%	100%	0%	100%	0%	100%	0%
Criminal RALJ	94%	6%	88%	13%	88%	12%	88%	12%	82%	18%
Civil RALJ	94%	6%	77%	23%	100%	0%	89%	11%	84%	16%
<b>Pending Total</b> <i>(excl. filings with clerk)</i>	<b>62%</b>	<b>38%</b>	<b>62%</b>	<b>38%</b>	<b>63%</b>	<b>37%</b>	<b>63%</b>	<b>37%</b>	<b>63%</b>	<b>37%</b>
Criminal (excl. RALJ)	56%	44%	57%	43%	60%	40%	60%	40%	62%	38%
Civil (excl. RALJ)	62%	38%	63%	37%	65%	35%	66%	34%	64%	36%
Domestic	58%	42%	58%	42%	58%	42%	58%	42%	59%	41%
Probate	81%	19%	76%	24%	74%	26%	67%	33%	66%	34%
Guardianship	62%	38%	67%	33%	68%	32%	62%	38%	61%	39%
Adoption	66%	34%	66%	34%	66%	34%	66%	34%	69%	31%
Paternity	43%	57%	43%	57%	45%	55%	37%	63%	37%	63%
ITA (civil commitment)	100%	0%	100%	0%	100%	0%	100%	0%	100%	0%
Juv. Dependency (DEP)	59%	41%	58%	42%	59%	41%	60%	40%	59%	41%
Juv. Termination (TER)	65%	35%	66%	34%	65%	35%	64%	36%	65%	35%
Juvenile ARY/CHINS/Other	51%	49%	57%	43%	54%	46%	50%	50%	46%	54%
Juvenile Truancy	51%	49%	51%	49%	51%	49%	54%	46%	50%	50%
Juvenile Offender	100%	0%	100%	0%	100%	0%	100%	0%	100%	0%
Criminal RALJ	91%	9%	91%	9%	87%	13%	89%	11%	88%	12%
Civil RALJ	74%	26%	83%	17%	83%	17%	82%	18%	84%	16%

Table 7. Quarterly Utilization of Pro Tem Judges/Commissioners <sup>(1)</sup>

Category	Q4/17	Q1/18	Q2/18	Q3/18	Q4/18	Q1/19	Q2/19	Q3/19	Q4/19	Q1/20
<b>Grand Total</b>	<b>2131</b>	<b>1149</b>	<b>2132</b>	<b>1362</b>	<b>1850</b>	<b>1084</b>	<b>2814</b>	<b>1454</b>	<b>2023</b>	<b>1125</b>
<b>FTE Equivalent <sup>(2)</sup></b>	<b>4.7</b>	<b>2.6</b>	<b>4.7</b>	<b>3.0</b>	<b>4.1</b>	<b>2.4</b>	<b>6.3</b>	<b>3.2</b>	<b>4.5</b>	<b>2.5</b>
<b>By Work Type</b>										
Pro Tem Judge	307	139	357	164	274	179	498	248	503	148
Pro Tem Commissioner	1824	1010	1775	1168	1576	905	2316	1206	1520	978
<b>By Location</b>										
KCCH	953	498	822	731	981	434	1602	632	919	378
MRJC	403	164	659	294	403	235	579	411	466	331
Juvenile	553	420	511	161	292	323	462	335	456	284
ITA	222	67	141	176	37	93	171	75	182	132
Other	0	0	0	0	136	0	0	0	0	0
<b>By Calendar Type</b>										
Criminal	74	15	63	24	145	10	133	54	145	42
Civil	0	0	0	0	0	0	0	0	0	0
Ex Parte	433	141	630	231	411	200	432	322	476	143
Family Law/Domestic	693	414	606	650	782	429	1377	588	661	482
Dependency	367	174	327	107	216	184	336	210	196	222
Juvenile Offender	123	32	123	46	57	124	81	95	230	58
BECCA	63	214	61	8	19	16	45	30	30	5
ITA	222	67	141	176	136	93	171	75	182	132
Juvenile Drug Court	0	0	0	0	0	0	0	0	0	0
Family Treatment Court	0	0	0	0	0	0	0	0	0	0
Plea Calendar	122	80	145	111	35	26	205	63	81	43
Status/Non-Compliance	9	0	11	0	0	0	0	0	5	0
Other or Unspecified	26	13	26	9	48	3	34	17	18	0
<b>By Reason</b>										
Vacation Backfill	1065	448	738	621	233	121	390	187	345	85
Medical Backfill	281	138	197	137	1431	835	2144	1151	1475	926
Duty Time	200	280	470	320	15	42	63	32	127	62
Conference Coverage	59	14	37	0	134	86	217	84	76	53
Congestion	527	149	264	57	0	0	0	0	0	0
Vacancy Coverage	0	0	426	124	0	0	0	0	0	0
Other	0	120	1	104	37	0	0	0	0	0

(1) This table is based on the time sheet for compensation

(2) Judge FTE Equivalent = # of hours / [7.5 hours/day \* 20 days/month \* 3 months] = # of hours/450.

*Data for the most current quarter are incomplete at reporting time and will be updated in next quarterly report.*

*The Pro Tem hours are provided quarterly by the Administrative Services Department of King County Superior Court.*

Table 8. Ex Parte and Family Law Hearings and Documents Signed

<b>Ex Parte: Hearings Held and Documents Signed</b>								
	2019Q2		2019Q3		2019Q4		2020Q1	
	Hearings	Documents Signed	Hearings	Documents Signed	Hearings	Documents Signed	Hearings	Documents Signed
<b>KNT (EXP04/05)</b>								
Civil	168	1072	163	1148	248	1340	260	1190
Domestic	410	1501	299	1444	459	1465	360	1364
Probate/Guardianship	258	502	194	572	271	276	220	271
Adoption/Paternity	50	175	38	123	50	145	32	127
Ex Parte Via Clerk (EXP06)		3225		3152		3107		2681
<b>KNT Subtotal</b>	<b>886</b>	<b>6475</b>	<b>694</b>	<b>6439</b>	<b>1028</b>	<b>6333</b>	<b>872</b>	<b>5633</b>
<b>SEA (EXP01/02)</b>								
Civil	261	948	207	965	326	1182	224	1020
Domestic	390	2052	311	1870	405	1992	252	1789
Probate/Guardianship	653	1474	517	1653	701	1771	542	1440
Adoption/Paternity	73	300	46	267	45	247	37	197
Ex Parte Via Clerk (EXP07)		7555		6981		7270		6440
<b>SEA Total</b>	<b>1377</b>	<b>12329</b>	<b>1081</b>	<b>11736</b>	<b>1477</b>	<b>12462</b>	<b>1055</b>	<b>10886</b>
<b>KNT/SEA Total</b>	<b>2263</b>	<b>18804</b>	<b>1775</b>	<b>18175</b>	<b>2505</b>	<b>18795</b>	<b>1927</b>	<b>16519</b>
<b>FAMILY LAW: Hearings Held and Documents Signed</b>								
	2019Q2		2019Q3		2019Q4		2020Q1	
	Hearings	Documents Signed	Hearings	Documents Signed	Hearings	Documents Signed	Hearings	Documents Signed
<b>KNT (FAM02)</b>								
Civil	643	859	479	914	670	958	556	878
Domestic	570	1136	468	1285	622	1185	502	1621
Adoption/Paternity	66	426	63	507	84	440	84	488
<b>KNT Subtotal</b>	<b>1279</b>	<b>2421</b>	<b>1010</b>	<b>2706</b>	<b>1376</b>	<b>2583</b>	<b>1142</b>	<b>2987</b>
<b>SEA (FAM01)</b>								
Civil	455	704	452	755	519	768	453	726
Domestic	447	1364	434	1520	529	1663	428	1548
Adoption/Paternity	51	549	51	505	39	606	56	547
<b>SEA Total</b>	<b>953</b>	<b>2617</b>	<b>937</b>	<b>2780</b>	<b>1087</b>	<b>3037</b>	<b>937</b>	<b>2821</b>
<b>KNT/SEA Total</b>	<b>2232</b>	<b>5038</b>	<b>1947</b>	<b>5486</b>	<b>2463</b>	<b>5620</b>	<b>2079</b>	<b>5808</b>

# Appendix Glossary and Definition

## **Active Status**

A case is active if it is not on suspense status (see Suspense Status).

## **Adoption and paternity Cases (case type 5)**

ADP - Adoption  
CFI - Confidential Intermediary  
CHN - Confidential Change of Name  
DIP - Disestablishment of Parentage  
MDS - Modification/Support Only  
MOD - Modification  
MSC - Miscellaneous  
OAA - Open Adoption Agreement  
PAD - De Facto Parentage  
PAG - Pre Birth Establish Parentage Genetic  
PAS - Establish Parentage Gestational Surrogacy  
PAT - Parentage  
PPR - Initial Pre Placement Report  
PRC - Parentage Rescission/Challenge  
PUR - Parentage (URES/UFSA)  
REL - Relinquishment  
ROB - Relocation Objection  
TER - Termination of Parental Rights

## **Case**

A case is defined as a filing with an assigned case number.

## **Civil Cases (case type 2, no RALJ)**

ALR - Administrative Law Review  
ALRLI - L&I Administrative Law Review  
AOD - Assurance of Discontinuance  
ASB - Asbestos  
ASP - Asbestos Personal Injury  
ASW - Asbestos Wrongful Death  
BAT - Petition to Appeal/Amend Ballot Title  
CAA - Motion to Confirm/Compel Arbitration Award  
CHN - Non Confidential Change of Name  
COL - Collection  
COM - Commercial  
CON - Condemnation  
CRP - Certificate of Restoration of Opportunity  
CRR - Petition for Certificate of Rehabilitation  
DOL - Appeal Licensing Revocation  
DSF - Notice of Deposit of Surplus Funds from Trustee's Sale of Real Property  
DVP - Domestic Violence  
ECP - Enforcement of Canadian Protection Order  
EOM - Emancipation of Minor  
FOR - Foreclosure  
FPO - Foreign Protection Order  
FVL - Motion to Show Cause /Fruivolous Lien  
HAR - Unlawful Harassment  
HSI - Application for Health & Safety Inspection  
INJ - Injunction  
IPL - Complaint for Interpleader  
LUP - Land Use Petition  
MAL - Other Malpractice  
MED - Medical Malpractice  
MER - Meretricious Relationships  
MHA - Malicious Harassment  
MSC - Miscellaneous  
MST - Minor Settlement  
MWP - Minor Work Permit  
NJF - Non Judicial Filing  
OSS - Petition to Issue Out of State Subpoena  
PBC - Petition for Birth Certificate Change  
PBJ - Petition for Justification /Bail Bond Company  
PCC - Petition for Civil Commitment  
PFA - Property Fairness Act  
PIN - Personal Injury  
PPT - Petition for Perpetuation of Testimony  
PRA - Public Records Act

PRG - Property Damage /Gangs  
PRP - Property Damage  
PVO - Petition for Vehicle Ownership  
QTI - Quiet Title  
RCV - Petition to Appoint Receiver  
RDR - Relief from Duty to Register  
RFR - Restoration of Firearms Rights  
RRC - Remove Restricted Covenant  
SCA - Small Claims Appeal  
SDR - School District /Required Action Plan  
SER - Subdivision Election Process Law Review  
SPC - Seizure of Property From Commission of a Crime  
SPR - Seizure of Property Resulting From a Crime  
STK - Stalking Protection  
SXP - Sexual Assault Protection  
TMV - Tort /Motor Vehicle  
TSS - Petition for Approval of Transfer of Structured Settlement  
TTO - Tort /Other  
UND - Unlawful Detainer  
VAP - Vulnerable Adult Protection Order  
VEP - Voter Election Process Law Review  
VVT - Victims of Motor Vehicle Theft /Civil Action  
WDE - Wrongful Death  
WHC - Writ of Habeas Corpus  
WMW - Miscellaneous Writs  
WRM - Writ of Mandamus  
WRR - Writ of Restitution  
WRV - Writ of Review  
XRP - Extreme Risk Protection Order

## **Civil Matters Filed with Clerk (case type 2)**

ABJ - Abstract of Judgment  
FJU - Foreign Judgment  
TAX - Tax Warrants  
TRJ - Transcript of Judgment  
CFJ - Petition for Order Granting Judgment on Confession of Judgment

## **Civil RALJ Cases (case type 2)**

LCA - Lower Court Appeal /Civil  
LCI - Lower Court Appeal /Infractions

## **Completion**

A case is completed if dispositive document is filed with the court following resolution.

## **Criminal Cases (case type 1, no RALJ)**

Adult criminal cases, excluding appeals from courts of limited jurisdiction. This reporting category includes the following crime categories within SCOMIS case type 1:

Homicide  
Sex Crime  
Robbery  
Assault  
Theft/Burglary  
Motor Vehicle Theft  
Controlled Substance  
Others

## **Criminal RALJ Cases (case type 1)**

CRJ - Criminal RALJ

## **Domestic Cases (case type 3)**

CIR - Committed Intimate Relationship  
CUS - Child Custody  
DIC - Dissolution w/ Children  
DIN - Dissolution no Children  
DIS - Dissolution  
DPC - Dissolution of Domestic Partnership w/ Children

DPN - Dissolution of Domestic Partnership /No Children  
 FJU - Out of State Support Registration /Foreign Judgment  
 INC - Annulment /Inv of Marriage w/ Children  
 IND - Annulment /Inv of Domestic Partnership w/ Children  
 INP - Invalidity, Domestic Partnership  
 INV - Annulment /Invalidity  
 MDS - Modification/Support Only  
 MOD - Modification  
 MSC - Miscellaneous  
 MWA - Mandatory Wage Assignment  
 OSC - Out of State Custody  
 PPS - Parenting Plan / Child Support  
 PSO - Petition for Entry of KC Support Order  
 RCV - Relative Child Visitation  
 RIC - Reciprocal, Resp in County  
 ROB - Relocation /Objection  
 ROC - Reciprocal, Resp out of County  
 RVC - Relative Child Visits  
 SDC - Legal Separation, Domestic Partnership w/ Children  
 SEC - Legal Separation w/ Children  
 SEP - Legal Separation  
 SPD - Legal Separation, Domestic Partnership /No Children  
 TSS - Structured Settlement

### **Jury Trial**

A hearing is reported as a jury trial if the jury is impaneled.

### **Juvenile BECCA Cases (case type 7)**

ARY - At Risk Youth  
 CNS - Child In Need Of Services  
 DDP - Developmental Disability  
 DGN - Dependency Guardianship  
 EFC - Extended Foster Care, Dependency  
 GFC - Guardianship Foster Children  
 RPR - Reinstatement of Parental Rights  
 RVS - Relative Visitation  
 TRU - Truancy  
 VYG - Vulnerable Youth Guardianship

### **Juvenile Dependency Cases (case type 7)**

DEP – Dependency  
 TER - Termination of Parental Rights

### **Juvenile Offender Cases (case type 8)**

Homicide  
 Sex Crime  
 Robbery  
 Assault  
 Theft/Burglary  
 Motor Vehicle Theft  
 Controlled Substance  
 Others

### **Involuntary Treatment Act Cases (case type 6)**

Alcoholic Treatment (ALT)  
 ITA - Adult (MI)  
 ITA - Family (MIF)  
 ITA - Juvenile (MIJ)

### **Non-Jury Trial**

A hearing is reported as a non-jury trial if an opening statement is made, waived, or reserved.

### **Pending Case**

A case is defined as pending if it is unresolved and active (not in suspense).

### **Post-disposition Modifications**

Petition to modify parenting plan after the resolution of the original case, based on the modification schedule.

### **Probate and Guardianship Cases (case type 5)**

ABS - Absentee  
 AOS - Affidavit of Successor  
 ASE - Affidavit of Small Estate  
 DSC - Disclaimer  
 EST - Estate  
 FNW - Foreign Will  
 G/E - Guardianship/Estate  
 GDE - Guardianship of the Estate  
 GDN - Guardianship  
 GDP - Guardianship of the Person  
 LGD - Limited Guardianship  
 LGE - Limited Guardianship of the Estate  
 LGP - Limited Guardianship of the Person  
 MGD - Minor Guardianship  
 MSC - Miscellaneous  
 MST - Minor Settlement  
 NJB - Non Judicial Binding/TEDRA Agreement  
 NNC - Non Probate Notice to Creditor  
 POA - Petition for Relief (RCW 11.94) /Power of Attorney  
 RGR - Registration of Guardianship  
 RTR - Registration of Trust /Trust Situs  
 SNT - Special Needs Trust  
 TDR - Trust/Estate Dispute Resolution  
 TRS - Trust  
 WLL - Will Only

### **Resolution**

A case is resolved if all issues in the complaint are fully adjudicated.

### **Suspended Case**

A case is placed in suspense status from active status during the reporting period.

### **Suspense Status**

A case is on suspense status if it is on warrant, appeal, stay, mediation, arbitration (“Deferred Prosecution” is not a suspense status, but is treated as a resolution).

### **Trial**

A hearing set before a judge or jury in which all the issues in the case are meant to be resolved. A trial normally includes opening statements to the court or jury stating what evidence will show, introduction of witnesses and exhibits for direct and cross examination, final arguments to the court or jury in which counsel argue both the evidence and the law, and judgment by the court or jury stating what the facts of the case are and what law applies to the facts. In a jury case, it also includes the selection of the jury. A trial can be held for one or more cases. A single trial may be held to adjudicate more than one case (as defined above).