



King County

Department of Judicial Administration

Barbara Miner

Director and Superior Court Clerk

(206) 296-9300 (206) 296-0100 TTY/TDD

King County Superior Court

Quarterly Statistical Report

Third Quarter 2020

Department of Judicial Administration

Prepared by: Shiquan Liao, Ph.D., Statistician

October 15, 2020

Report #: QTR-2020-03

Seattle:

516 Third Avenue Room E609
Seattle, WA 98104-2386

Regional Justice Center:

401 Fourth Avenue North Room 2C
Kent, WA 98032-4429

Juvenile Division:

1211 East Alder Room 3015
Seattle, WA 98122-5598

Quarterly Report Summary

King County Superior Court

NOTE: Washington State Supreme Court orders related to the coronavirus pandemic, beginning March 2020, affect the statistics for the foreseeable future.

Highlights

- **Criminal Cases** -- The criminal filings in the first three quarters of 2020 were lower than that in 2019, with a 10.5% decrease. The criminal filings (excluding RALJ) in the first three quarters of 2020 were 4,358 cases. MRJC accounted for 41% of the total criminal filings in the court. The resolutions of criminal cases in the first three quarters of 2020 were 2,977 cases, significantly lower than the filing volume in the same time period. The pending criminal caseload at the end of the third quarter of 2020 was 5,659 cases (excluding RALJ). Of the 5,659 pending criminal cases, 39% were the MRJC cases. **The increase in pending criminal caseload is primarily due to the COVID-19 pandemic causing the court to suspend trials, to issue many fewer bench warrants and to postpone jury trials, thus keeping these cases in pending active status.**
- **Civil Cases**. Filings in general civil cases (case type 2) in the first three quarters of 2020 were significantly lower than that in 2019 (-27.3%) because of COV-19. The civil resolutions were low in the same time period. The pending civil caseload were 7,821 cases at the end of the third quarter of 2020. MRJC had 35% of the civil pending caseload at the end of the third quarter of 2020.
- **Domestic Cases**. For domestic cases (case type 3), the filings in the first three quarters of 2020 were also significantly lower than that in 2019 (-16.8%). The resolutions of domestic cases lagged slightly behind the filing volume in the same time period. The pending domestic caseload was 4,773 cases at the end of the third quarter of 2020, with 41% being the MRJC cases.
- **ITA Cases**. The filings of ITA cases in the first three quarters of 2020 were essentially same as that in 2019 (+3.7%), totaling 3,791 cases. The filing of ITA cases showed a flatter pattern after sharp increases in previous years. The pending ITA caseload at the end of the third quarter of 2020 was 315 cases.
- **Juvenile Dependency/Termination (DEP/TER) and At-risk Youth (ARY)/Child-in-Need of Service (CHINS) Cases**. In the first three quarters of 2020, the filing volume in juvenile related cases showed a decreasing pattern when compared to the same time period in 2019 in most categories, dependency filings down 44.4% (-44.4%), truancy down 64.5% (-64.5%), ARY/CHINS/Other down 42.0% (-42.0%), while termination up by 22.8% . At the end of the third quarter of 2020, there were 635 dependency cases, 341 termination cases, and 115 ARY/CHINS/Other cases pending resolution.
- **Juvenile Offender Cases**. The juvenile offender filings in the first three quarters of 2020 were 631 cases, a 28.5% decrease from 2019 (-28.5%). The resolution pace for juvenile offender almost matched the filing pace in the same time period. At the end of the third quarter of 2020, there were 649 juvenile offender pending cases.
- **Pro Tem Use**. In the first three quarters of 2020, the daily Pro Tem use by the court was 2.5, 0.8, and 2.3 FTEs, a low volume.
- **Post-resolution Modifications (Table 1-A)**. In the first three quarters of 2020, there were 439 modifications (both parenting plan and relocation modifications).

Note: Statistics for family law and Ex Parte departments have been temporarily suspended. We expect to resume and update the statistics for previous quarters at the end of 2020.

Table 1. Year-to-Date Filing Activity

King County Superior Court

Reporting Category	Year-to-Date (Jan – Sep) and Annual Filing Activity ⁽¹⁾					2019-2020 change (+ means “increase”)		% of 2020 Total Filing ⁽²⁾
	2016	2017	2018	2019	2020	Cases	Percentage	
Total (incl. RALJ)								
Year-to-Date Filing	39337	40089	40860	39925	32073	-7852	-19.7%	
Annual Filing	51472	53115	53835	52889				
Criminal (excl. RALJ)								
Year-to-Date Filing	5021	4893	4447	4865	4356	-509	-10.5%	13.6%
Annual Filing	6632	6441	5989	6607				
Civil (excl. RALJ)								
Year-to-Date Filing	16278	16180	16905	15884	11511	-4333	-27.3%	35.9%
Annual Filing	21222	21517	22217	21202				
Domestic								
Year-to-Date Filing	5786	5861	5923	5516	4589	-927	-16.8%	14.3%
Annual Filing	7512	7597	7640	7280				
Probate								
Year-to-Date Filing	4640	4929	4812	5203	4925	-278	-5.3%	15.4%
Annual Filing	6073	6418	6382	6804				
Guardianship								
Year-to-Date Filing	765	702	728	559	529	-30	-5.4%	1.6%
Annual Filing	1008	949	977	706				
Adoption								
Year-to-Date Filing	347	401	322	369	294	-75	-20.3%	0.9%
Annual Filing	458	546	445	483				
Parentage								
Year-to-Date Filing	380	418	407	402	244	-158	-39.3%	0.8%
Annual Filing	528	539	512	526				
ITA – Civil Commitment								
Year-to-Date Filing	3124	3517	3651	3766	3791	+140	+3.7%	11.8%
Annual Filing	4152	4694	4910	4985				
Juvenile Dependency (DEP)								
Year-to-Date Filing	573	595	597	619	344	-275	-44.4%	1.1%
Annual Filing	727	793	787	811				
Juvenile Termination (TER)								
Year-to-Date Filing	173	221	262	158	194	+36	+22.8%	0.6%
Annual Filing	219	304	344	225				
Juvenile ARY/CHINS/OTHERS								
Year-to-Date Filing	178	170	201	162	94	-68	-42.0%	0.3%
Annual Filing	247	245	293	206				
Juvenile Truancy								
Year-to-Date Filing	972	1078	1463	1388	493	-895	-64.5%	1.5%
Annual Filing	1222	1547	1925	1706				
Juvenile Offender								
Year-to-Date Filing	972	975	980	882	631	-251	-28.5%	2.0%
Annual Filing	1295	1324	1229	1121				
Criminal RALJ								
Year-to-Date Filing	78	102	89	102	48	-54	-52.9%	0.1%
Annual Filing	111	136	117	146				
Civil RALJ								
Year-to-Date Filing	50	47	43	50	30	-20	-40%	0.1%
Annual Filing	66	65	68	81				
Matters Filed with Clerk ⁽³⁾								
Year-to-Date Filing	6826	8741	6685	7342	2545	-4797	-65.3%	
Annual Filing	8742	10903	9036	10030				

(1) New filings only (based on filing date).

(2) New filings of each reporting category as percentage of “Year-to-Date Filing”.

(3) “Matters Filed with Clerk” are not included in the “Total”.

Chart 1-A. Quarterly Filing Activity
Total Judicial Cases Only ("Matters Filed with Clerk" excluded)

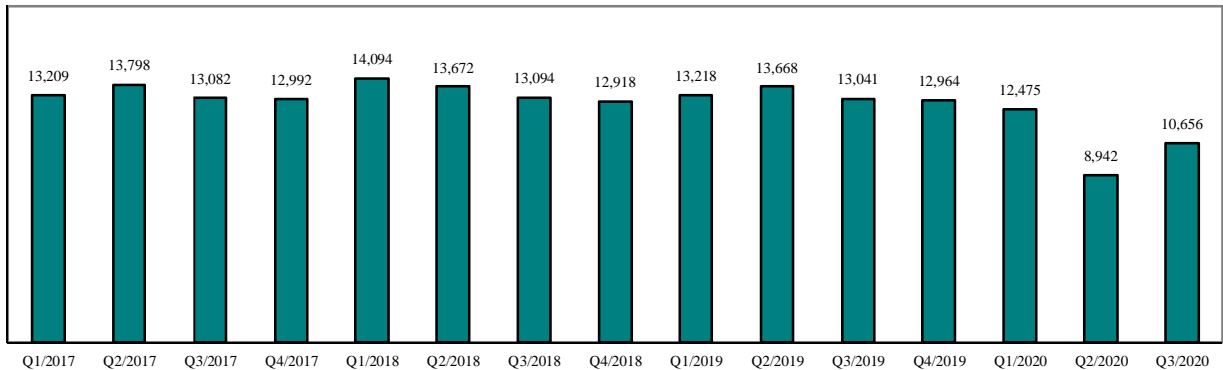
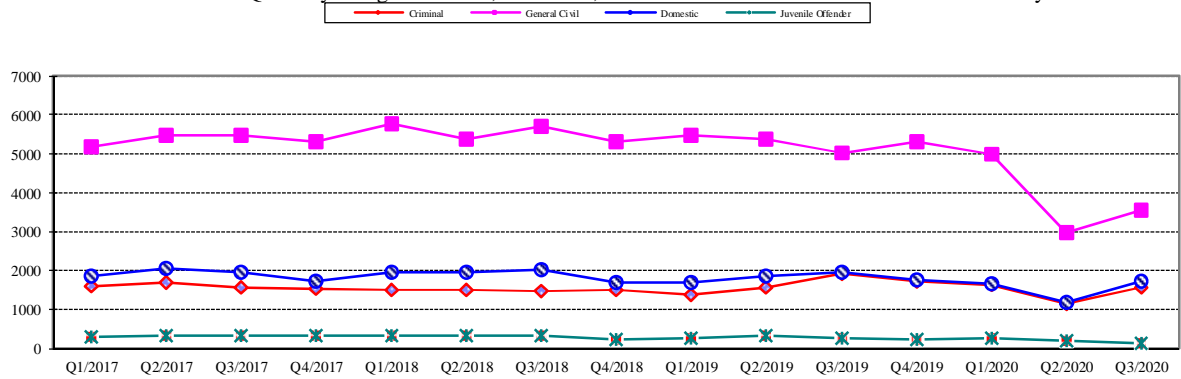


Chart 1-B. Quarterly Filings: Criminal, Domestic, General Civil and Juvenile Offender Cases Only



* Note: "General Civil" is specifically defined in this report. The category of "General Civil" does **not** include the following case types: domestic, probate, guardianship, adoption, Parentage, ITA (civil commitment), juvenile cases (dependency, at-risk youth, child-in-need of service, civil RALJ, and tax filings that don't require judicial resources ("matters filed with clerk"). Please check the Appendix for the cause codes in the "General Civil" category.

Table 1-A. Post-Resolution Modifications (Domestic and Parentage Cases)

		2018Q1			2018Q2			2018Q3			2018Q4			Year 2018		
Location	Case Type	DMOD	DTBA	Total	DMOD	DTBA	Total	DMOD	DTBA	Total	DMOD	DTBA	Total	DMOD	DTBA	Total
KNT	Domestic	207	25	232	193	50	243	168	33	201	134	22	156	702	130	832
	Parentage	15	3	18	11	6	17	16	3	19	8	1	9	50	13	63
KNT Total		222	28	250	204	56	260	184	36	220	142	23	165	752	143	895
SEA	Domestic	172	51	223	182	82	264	130	43	173	120	45	165	604	221	825
	Parentage	11	2	13	5	4	9	9	3	12	10	2	12	35	11	46
SEA Total		183	53	236	187	86	273	139	46	185	130	47	177	639	232	871
KNT/SEA Total		405	81	486	391	142	533	323	82	405	272	70	342	1391	375	1766
		2019Q1			2019Q2			2019Q3			2019Q4			Year 2019		
Location	Case Type	Relocation	Parent Mod	Total	Relocation	Parent Mod	Total	Relocation	Parent Mod	Total	Relocation	Parent Mod	Total	Relocation	Parent Mod	Total
KNT	Domestic	6	66	72	15	53	68	18	64	82	5	60	65	44	243	287
	Parentage	0	11	11	0	9	9	1	14	15	0	15	15	1	49	50
KNT Total		6	77	83	15	62	77	19	78	97	5	75	80	45	292	337
SEA	Domestic	15	80	95	24	78	102	23	78	101	8	70	78	70	306	376
	Parentage	1	13	14	0	11	11	2	7	9	0	6	6	3	37	40
SEA Total		16	93	109	24	89	113	25	85	110	8	76	84	73	343	416
KNT/SEA Total		22	170	192	39	151	190	44	163	207	13	151	164	118	635	753
		2020Q1			2020Q2			2020Q3			2020Q4			Year 2020 (YTD)		
Location	Case Type	Relocation	Parent Mod	Total	Relocation	Parent Mod	Total	Relocation	Parent Mod	Total	Relocation	Parent Mod	Total	Relocation	Parent Mod	Total
KNT	Domestic	5	59	64	11	39	50	14	42	56				30	140	170
	Parentage	1	11	12	1	2	3	0	11	11				2	24	26
KNT Total		6	70	76	12	41	53	14	53	67				32	164	196
SEA	Domestic	17	69	86	19	42	61	26	55	81				62	166	228
	Parentage	1	7	8	1	2	3	1	3	4				3	12	15
SEA Total		18	76	94	20	44	64	27	58	85				65	178	243
KNT/SEA Total		24	146	170	32	85	117	41	111	152				97	342	439
1) Prior to 2019, both parenting and support modifications were included; 2) Starting 2019, only parenting modification and relocation are included.																

Table 2. Number of Cases Resolved and Resolution Category (%)

King County Superior Court

Reporting Category	Q4/18	Q1/19	Q2/19	Q3/19	Q4/19	Q1/20	Q2/20	Q3/20
Total Resolutions (excl. "Matters Filed with Clerk")	12750	12414	13168	13115	13083	11629	8047	10374
Criminal (excl. RALJ): # Resolved	1397	1373	1439	1519	1457	1427	574	976
Resolved by Jury Trial	2.7%	2.6%	3.5%	2.1%	3.6%	2.6%	0.2%	0.6%
Resolved by Non-Jury Trial	0.1%	0.3%	0.5%	0.3%	0.4%	1.0%	1.7%	0.8%
Resolved by Guilty Plea	79.8%	77.9%	78.4%	78.1%	74.0%	72.0%	67.4%	69.5%
Dismissal	17.1%	18.6%	16.7%	19.4%	21.8%	24.2%	30.7%	29.1%
Others	0.2%	0.6%	0.8%	0.2%	0.2%	0.2%	0.0%	0.0%
Civil: # Resolved	5190	5093	5346	5391	5559	4671	2708	3608
Resolved by Jury Trial	0.4%	0.3%	0.5%	0.4%	0.3%	0.2%	0.0%	0.2%
Resolved by Non-Jury Trial	0.3%	0.2%	0.3%	0.5%	0.3%	0.1%	0.1%	0.1%
Summary Judgment	2.5%	1.4%	1.9%	2.2%	1.4%	1.3%	1.0%	1.2%
Default/ Uncontested	33.5%	30.5%	30.4%	29.8%	30.1%	32.3%	39.1%	40.8%
Arbitration	4.1%	3.8%	3.5%	3.3%	3.3%	3.2%	5.4%	6.3%
Settlement/Dismissal	58.0%	63.0%	59.2%	61.7%	60.0%	60.3%	53.3%	49.6%
Closure by Clerk	0.4%	0.0%	3.2%	1.2%	3.7%	1.8%	0.0%	0.6%
Others	0.8%	0.9%	0.9%	0.8%	0.9%	0.8%	1.1%	1.1%
Domestic: # Resolved	2070	1564	1912	1903	1916	1507	1135	1405
Resolved by Trial	2.9%	3.2%	3.2%	2.8%	4.1%	3.1%	1.0%	2.9%
Default/ Uncontested	9.0%	9.3%	8.5%	8.9%	8.4%	9.6%	6.7%	9.0%
Settlement /Dismissal	87.9%	87.0%	87.3%	88.1%	86.3%	86.7%	92.2%	87.9%
Closure by Clerk	0.0%	0.0%	0.4%	0.1%	0.8%	0.3%	0.0%	0.1%
Others	0.2%	0.5%	0.5%	0.1%	0.4%	0.3%	0.2%	0.1%
Probate: # Resolved	1503	1762	1808	1622	1572	1534	1508	1634
Personal Rep. Appointed	73.1%	68.2%	71.8%	68.0%	67.7%	69.0%	73.2%	70.9%
Dismissal	4.5%	6.6%	6.2%	7.0%	7.8%	5.4%	6.2%	6.5%
Closure by Clerk	0.0%	0.0%	0.0%	0.0%	0.0%	0.1%	0.0%	0.0%
Others	22.4%	25.1%	22.0%	25.0%	24.6%	25.5%	20.6%	22.6%
Guardianship: # Resolved	177	165	178	156	157	157	147	172
Guardian Appointed	75.7%	80.6%	87.1%	86.5%	82.2%	80.9%	69.4%	71.5%
Dismissal	23.2%	18.2%	12.4%	11.5%	16.6%	18.5%	28.6%	21.5%
Closure by Clerk	0.0%	0.0%	0.0%	0.0%	0.0%	0.0%	0.0%	4.7%
Others	1.1%	1.2%	0.6%	1.9%	1.3%	0.6%	2.0%	2.3%
Adoption: # Resolved	112	78	131	136	127	79	59	104
Resolved by Trial	0.9%	0.0%	0.8%	0.0%	0.0%	0.0%	0.0%	0.0%
Uncontested	6.3%	12.8%	2.3%	9.6%	3.1%	7.6%	0.0%	3.8%
Settlement /Dismissal	92.9%	87.2%	96.9%	90.4%	96.1%	91.1%	98.3%	96.2%
Closure by Clerk	0.0%	0.0%	0.0%	0.0%	0.8%	0.0%	0.0%	0.0%
Others	0.0%	0.0%	0.0%	0.0%	0.0%	1.3%	1.7%	0.0%
Parentage: # Resolved	129	107	146	129	129	98	27	96
Resolved by Trial	0.8%	0.0%	1.4%	2.3%	0.8%	1.0%	0.0%	0.0%
Summary Judgment	47.3%	50.5%	50.7%	45.0%	44.2%	51.0%	33.3%	58.3%
Default/ Uncontested	22.5%	15.0%	19.2%	18.6%	12.4%	8.2%	3.7%	8.3%
Settlement/Dismissal	29.15%	34.6%	28.8%	34.1%	41.9%	39.8%	63.0%	32.3%
Closure by Clerk	0.0%	0.0%	0.0%	0.0%	0.0%	0.0%	0.0%	0.0%
Others	0.0%	0.0%	0.0%	0.0%	0.8%	0.0%	0.0%	1.0%
ITA(civil commitment): # Resolved	1144	1271	1259	1275	1175	1123	1116	1395
Court Decision to Commit	60.2%	53.5%	52.9%	53.6%	50.2%	47.9%	44.6%	41.9%
Closed by Court	0.0%	0.0%	0.0%	0.0%	0.0%	0.0%	0.0%	0.0%
Dismissal	17.4%	13.6%	12.8%	15.2%	18.6%	14.1%	13.6%	11.0%
Others	22.4%	32.9%	34.3%	31.2%	31.1%	38.0%	41.8%	47.1%
Juv. Dependency: # Resolved	145	201	142	190	155	137	65	152
Finding of Dependency	81.4%	82.6%	85.2%	64.7%	39.4%	48.2%	41.5%	50.0%
Dismissal	18.6%	17.4%	14.8%	34.7%	50.6%	50.4%	58.5%	49.3%
Others	0.0%	0.0%	0.0%	0.5%	0.0%	1.5%	0.0%	0.7%

Table 2 (cont.). Number of Cases Resolved and Resolution Category (%)

King County Superior Court

Reporting Category	Q4/18	Q1/19	Q2/19	Q3/19	Q4/19	Q1/20	Q2/20	Q3/20
Juv. Terminations: # Resolved	71	58	58	34	37	40	15	63
Finding of Dependency	87.3%	79.3%	84.5%	88.2%	64.9%	85.0%	60.0%	81.0%
Dismissal	12.7%	20.7%	15.5%	11.8%	35.1%	15.0%	40.0%	19.0%
Others	0.0%	0.0%	0.0%	0.0%	0.0%	0.0%	0.0%	0.0%
ARY/CHINS/OTHER: # Resolved	36	43	49	50	41	29	14	38
Approve of Petition	38.9%	67.5%	63.2%	42.0%	39.0%	13.7%	28.6%	15.8%
Dismissal	61.1%	32.5%	36.7%	58.0%	61.0%	86.2%	71.4%	68.4%
Others	0.0%	0.0%	0.0%	0.0%	0.0%	0.0%	0.0%	0.0%
Juvenile Truancy: # Resolved	420	386	377	424	445	548	497	424
Approve of Petition	5.2%	7.8%	8.2%	0.2%	0.2%	0.5%	0.2%	0.0%
Dismissal	94.8%	92.2%	91.8%	99.8%	99.8%	99.5%	99.8%	100%
Others	0.0%	0.0%	0.0%	0.0%	0.0%	0.0%	0.0%	0.0%
Juvenile Offender: # Resolved	320	261	278	250	245	232	132	251
Resolved by Trial (Fact Finding)	0.0%	1.5%	0.0%	0.0%	0.0%	2.2%	0.8%	0.4%
Resolved by Guilty Plea	42.2%	41.0%	34.9%	40.8%	39.6%	34.5%	31.3%	24.7%
Dismissal	35.0%	31.0%	41.7%	40.0%	36.9%	43.1%	47.0%	48.6%
Deferred Disposition (DDSP)	15.6%	11.5%	13.7%	14.8%	16.7%	11.2%	15.2%	19.5%
Others (including Deferred Prosecution)	7.2%	14.9%	9.7%	4.4%	4.1%	9.1%	6.1%	6.8%
Criminal RALJ: # Resolved	21	35	32	26	41	22	39	40
RALJ Decision	81.0%	68.6%	75.0%	65.4%	65.9%	86.4%	76.9%	75.0%
Dismissal	9.5%	28.6%	18.8%	26.9%	19.5%	13.6%	20.5%	25.0%
Others	9.5%	2.9%	6.3%	7.7%	14.6%	0.0%	2.6%	0.0%
Civil RALJ: # Resolved	15	17	13	10	27	25	11	16
RALJ Decision	40.0%	52.9%	46.2%	30.0%	37.0%	20.0%	45.5%	50.0%
Dismissal	60.0%	47.1%	53.8%	60.0%	46.1%	28.0%	45.5%	43.8%
Others	0.0%	0.0%	0.0%	10.0%	14.8%	52.0%	9.1%	6.3%

Chart 2-A. Quarterly Resolutions
Total Judicial Cases Only ("Matters Filed with Clerk" excluded)

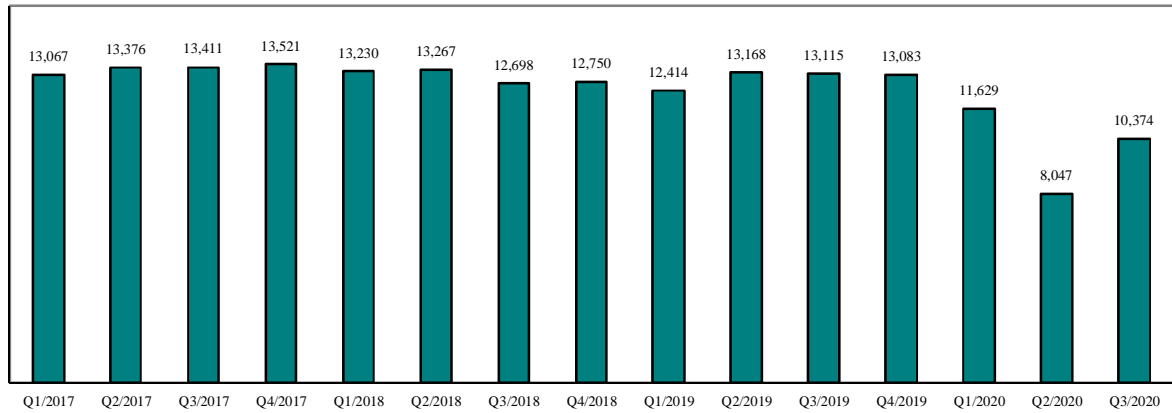
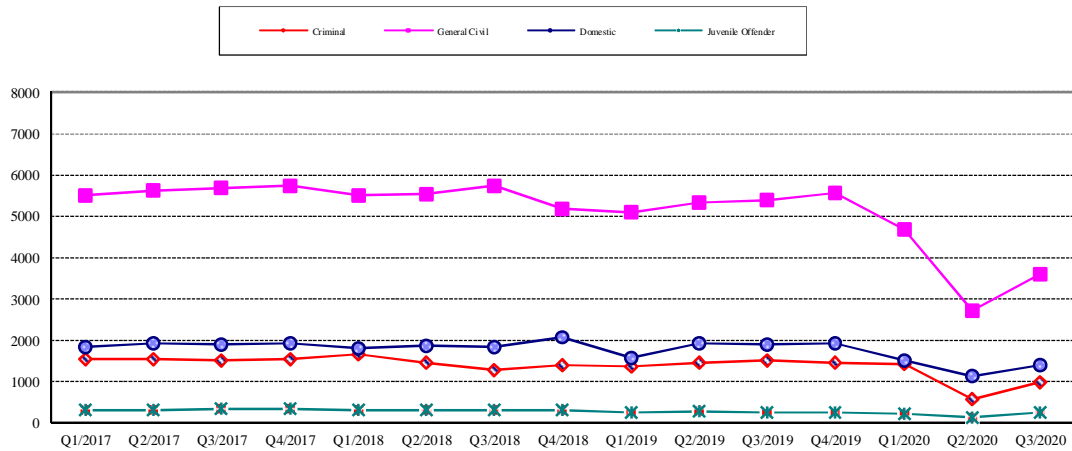


Chart 2-B. Quarterly Resolutions: Criminal, Dmestic, General Civil and Juvenile Offender Cases Only



Note: "General Civil" is specifically defined in this report. The category of "General Civil" does **not** include the following case types: domestic, probate, guardianship, adoption, Parentage, mental illness, juvenile cases (dependency, at-risk youth, child-in-need of service), civil RALJ, and tax filings that don't require judicial resources ("matters filed with clerk"). Please check the Appendix for the cause codes in the "General Civil" category.

Table 3. Age of Resolved Cases
King County Superior Court

Reporting Category	Age of Cases at Resolution							
	Q4/18	Q1/19	Q2/19	Q3/19	Q4/19	Q1/20	Q2/20	Q3/20
Criminal (excl. RALJ)								
Age (days)								
50% Cases Resolved by Day	132	144	127	109	104	118	112	179
90% Cases Resolved by Day	399	453	454	411	431	435	455	443
Comparison with Court Standard of								
90% in 4 months	46%	43%	49%	53%	54%	51%	53%	34%
98% in 6 months	64%	59%	61%	66%	68%	66%	67%	51%
100% in 9 months	81%	76%	76%	79%	80%	80%	79%	70%
Civil (excl. RALJ)								
Age (days)								
50% Cases Resolved by Day	46	54	58	62	64	42	73	91
90% Cases Resolved by Day	363	365	385	406	399	361	361	386
Comparison with Court Standard of								
90% in 12 months	89%	89%	88%	86%	86%	90%	90%	87%
98% in 18 months	97%	99%	97%	95%	94%	97%	98%	97%
100% in 24 months	99%	100%	100%	99%	98%	99%	100%	99%
Domestic								
Age (days)								
50% Cases Resolved by Day	139	169	190	157	149	153	170	224
90% Cases Resolved by Day	379	386	411	435	400	405	383	442
Comparison with Court Standard of								
90% in 8 months	67%	65%	62%	67%	71%	66%	64%	53%
98% in 10 months	77%	76%	74%	75%	79%	75%	77%	66%
100% in 14 months	92%	92%	90%	89%	92%	91%	93%	88%
Probate								
Age (days)								
50% Cases Resolved by Day	0	0	0	0	0	0	5	4
90% Cases Resolved by Day	20	25	25	30	30	18	30	34
Comparison with Court Standard of								
90% in 8 months	97%	97%	97%	97%	98%	98%	99%	99%
98% in 18 months	98%	98%	98%	97%	98%	99%	100%	99%
100% in 36 months	99%	99%	98%	97%	98%	99%	100%	100%
Guardianship								
Age (days)								
50% Cases Resolved by Day	59	51	54	52	59	52	53	56
90% Cases Resolved by Day	140	161	133	127	163	161	265	458
Comparison with Court Standard of								
90% in 8 months	95%	96%	96%	98%	93%	96%	90%	81%
98% in 18 months	97%	100%	99%	99%	98%	99%	94%	93%
100% in 36 months	97%	100%	99%	99%	99%	99%	97%	100%
Adoption								
Age (days)								
50% Cases Resolved by Day	54	38	30	38	35	36	70	52
90% Cases Resolved by Day	207	262	274	227	156	257	231	230
Comparison with Court Standard of								
90% in 8 months	90%	89%	87%	92%	95%	89%	93%	91%
98% in 10 months	93%	92%	92%	95%	98%	94%	97%	94%
100% in 14 months	97%	96%	99%	97%	99%	96%	100%	97%
Parentage								
Age (days)								
50% Cases Resolved by Day	140	158	164	131	121	152	275	239
90% Cases Resolved by Day	298	298	315	297	316	354	515	362
Comparison with Court Standard of								
90% in 8 months	79%	79%	74%	79%	83%	76%	41%	50%
98% in 10 months	91%	93%	88%	90%	89%	87%	67%	81%
100% in 14 months	96%	100%	96%	93%	97%	95%	85%	95%

Table 3 (cont.) Age of Resolved Cases

King County Superior Court

Reporting Category	Age of Cases at Resolution							
	Q4/18	Q1/19	Q2/19	Q3/19	Q4/19	Q1/20	Q2/20	Q3/20
ITA (civil commitment) *								
Age (days)								
50% Cases Resolved by Day	4	6	6	6	7	9	10	12
90% Cases Resolved by Day	20	59	24	22	27	32	30	53
Juvenile Dependency (DEP)								
Age (days)								
50% Cases Resolved by Day	116	128	105	116	211	198	190	203
90% Cases Resolved by Day	360	321	217	292	1056	618	517	455
Comparison with Court Standard of								
90% in 8 months	76%	78%	91%	86%	54%	66%	55%	61%
98% in 10 months	89%	87%	93%	90%	62%	78%	71%	73%
100% in 14 months	91%	93%	94%	94%	73%	86%	77%	85%
Juvenile Termination (TER)								
Age (days)								
50% Cases Resolved by Day	150	161	171	171	190	83	390	209
90% Cases Resolved by Day	269	467	329	377	375	523	675	560
Comparison with Court Standard of								
90% in 8 months	86%	64%	72%	74%	63%	80%	27%	60%
98% in 10 months	93%	81%	90%	80%	71%	80%	40%	71%
100% in 14 months	99%	87%	95%	95%	98%	83%	67%	84%
Juv ARY/CHINS/OTHER								
Age (days)								
50% Cases Resolved by Day	34	30	30	41	50	66	89	222
90% Cases Resolved by Day	228	119	226	230	238	251	224	362
Comparison with Court Standard of								
90% in 8 months	95%	100%	96%	92%	91%	86%	93%	66%
98% in 10 months	100%	100%	98%	96%	93%	100%	93%	76%
100% in 14 months	100%	100%	100%	98%	95%	100%	93%	97%
Juvenile Truancy*								
Age (days)								
50% Cases Resolved by Day	289	366	378	468	327	406	489	521
90% Cases Resolved by Day	470	544	623	616	700	1112	919	826
Juvenile Offender								
Age (days)								
50% Cases Resolved by Day	115	122	116	140	140	133	147	204
90% Cases Resolved by Day	260	285	345	307	385	331	330	461
Comparison with Court Standard of								
90% in 4 months	54%	49%	52%	43%	47%	47%	45%	24%
98% in 6 months	79%	68%	68%	66%	65%	54%	59%	39%
100% in 9 months	91%	88%	84%	84%	84%	82%	76%	68%
Criminal RALJ								
Age (days)								
50% Cases Resolved by Day	331	364	233	216	302	331	314	280
90% Cases Resolved by Day	519	588	493	500	716	490	632	486
Civil RALJ								
Age (days)								
50% Cases Resolved by Day	162	194	166	167	171	108	182	189
90% Cases Resolved by Day	386	291	259	210	324	323	250	301

* No standard yet.

Table 4. Active Pending Caseload Statistics
King County Superior Court

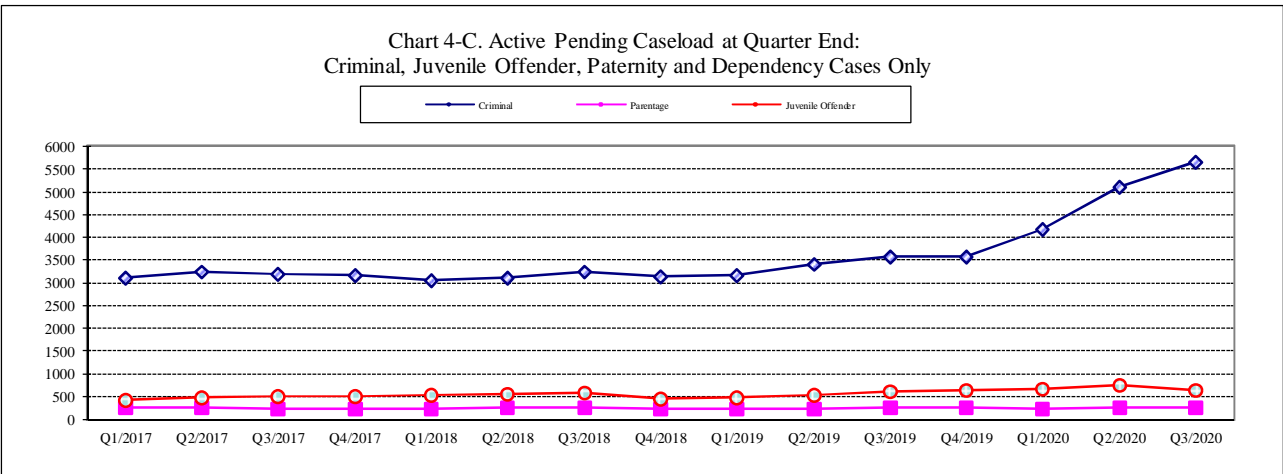
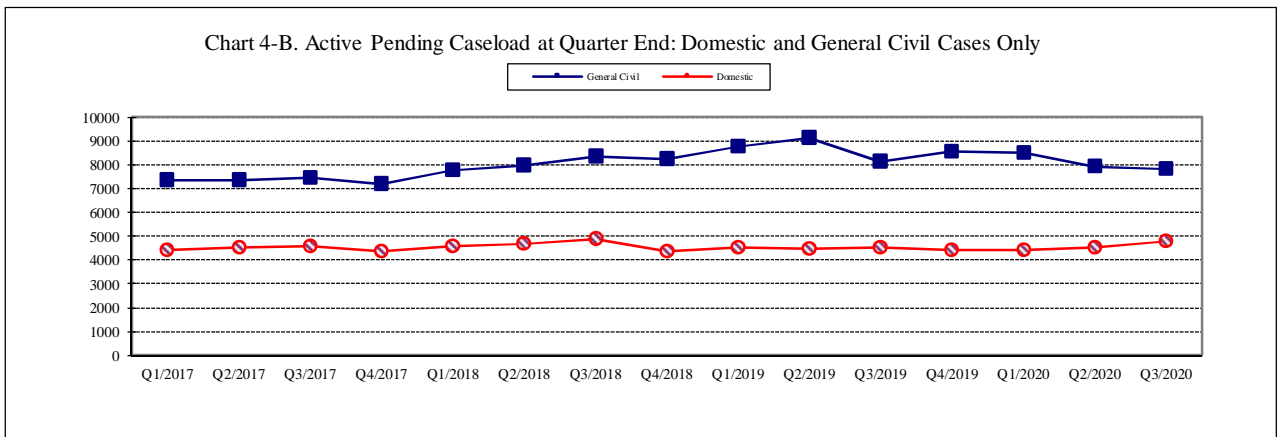
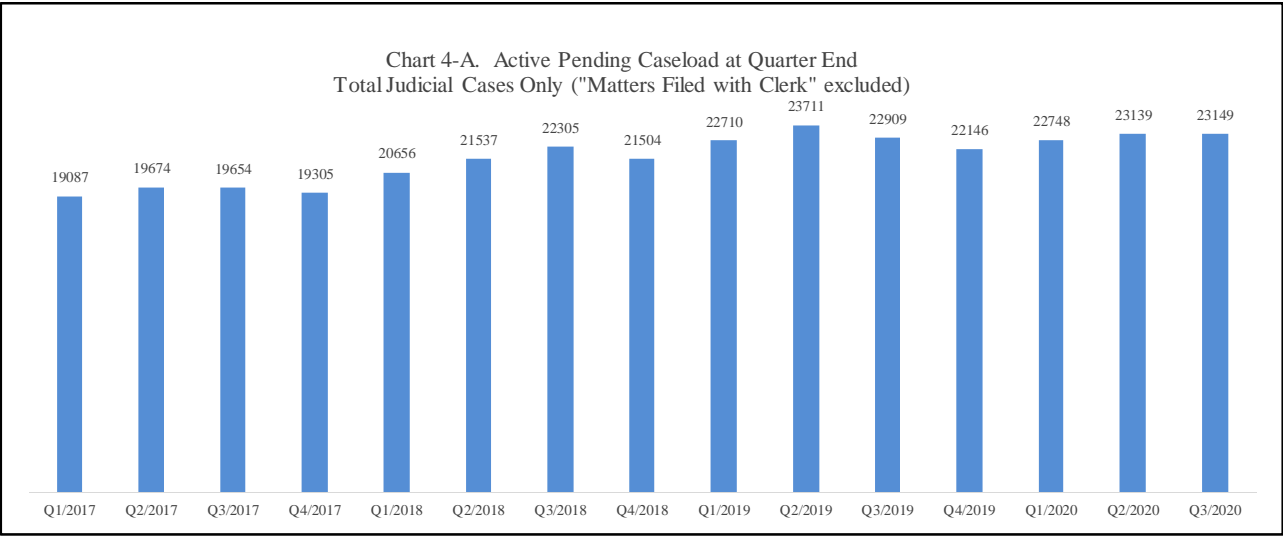
Reporting Category		Q4/18	Q1/19	Q2/19	Q3/19	Q4/19	Q1/20	Q2/20	Q3/20
Total (incl. RALJ)									
Previous Pending	(+)	22305	12750	12414	13168	13115	22146	22746	23139
New Filing	(+)	12918	13218	13666	13041	12964	12475	8942	10656
Resolved	(-)	12750	12414	13168	13115	13083	11629	8047	10374
End Pending		21504	22710	23711	22909	22146	22748	23139	23149
Resolution Rate*		0.987	0.939	0.964	1.006	1.009	0.932	0.900	0.974
Criminal (excl. RALJ)									
Previous Pending	(+)	3247	3150	3176	3420	3579	3564	4188	5113
New Filing	(+)	1508	1362	1575	1928	1742	1628	1149	1579
Resolved	(-)	1397	1373	1439	1519	1457	1427	574	976
End Pending		3150	3176	3420	3579	3564	4188	5113	5659
Resolution Rate*		0.926	1.008	0.914	0.788	0.836	0.877	0.500	0.618
Civil (excl. RALJ)									
Previous Pending	(+)	8366	8243	8813	9135	8152	8576	8515	7900
New Filing	(+)	5308	5480	5373	5031	5318	4981	2959	3571
Resolved	(-)	5189	5093	5346	5391	5559	4671	2708	3608
End Pending		8243	8813	9135	8152	8576	8515	7900	7821
Resolution Rate*		0.978	0.929	0.995	1.072	1.045	0.938	0.915	1.010
Domestic									
Previous Pending	(+)	4886	4381	4529	4478	4516	4384	4431	4511
New Filing	(+)	1694	1697	1863	1956	1764	1682	1179	1728
Resolved	(-)	2070	1564	1912	1903	1916	1507	1135	1405
End Pending		4381	4529	4478	4516	4384	4431	4511	4773
Resolution Rate*		1.222	0.922	1.026	0.973	1.086	0.896	0.963	0.813
Probate									
Previous Pending	(+)	1161	1146	1235	1476	1545	690	778	869
New Filing	(+)	1569	1762	1820	1621	1601	1622	1613	1690
Resolved	(-)	1503	1762	1808	1622	1572	1534	1508	1634
End Pending		1146	1235	1476	1545	690	778	869	923
Resolution Rate*		0.958	1.000	0.993	1.001	0.982	0.946	0.935	0.967
Guardianship									
Previous Pending	(+)	371	409	509	377	429	235	240	285
New Filing	(+)	246	200	170	189	147	180	175	174
Resolved	(-)	177	165	178	156	157	157	147	172
End Pending		409	509	377	429	235	240	285	281
Resolution Rate*		0.720	0.825	1.047	0.825	1.068	0.872	0.840	0.989
Adoption									
Previous Pending	(+)	171	174	197	205	196	184	220	234
New Filing	(+)	126	97	139	133	114	119	74	101
Resolved	(-)	112	78	131	136	127	79	59	104
End Pending		174	197	205	196	184	220	234	237
Resolution Rate*		0.889	0.804	0.942	1.023	1.114	0.664	0.797	1.030
Parentage									
Previous Pending	(+)	256	225	246	242	253	251	239	268
New Filing	(+)	102	125	140	137	124	101	53	90
Resolved	(-)	129	107	146	129	129	98	27	96
End Pending		225	246	242	253	251	239	268	249
Resolution Rate*		1.265	0.856	1.043	0.942	1.040	0.970	0.509	1.067
ITA (civil commitment)									
Previous Pending	(+)	310	283	206	201	246	288	263	433
New Filing	(+)	1259	1192	1254	1320	1219	1155	1267	1369
Resolved	(-)	1144	1271	1259	1275	1175	1123	1116	1395
End Pending		283	206	201	246	288	263	433	315
Resolution Rate*		0.909	1.066	1.004	0.966	0.964	0.972	0.881	1.019

* A value of "Resolution Rate" less than one indicates the resolution pace is slower than the filing pace.

Table 4 (cont.) Active Pending Caseload Statistics
King County Superior Court

Reporting Category	Q4/18	Q1/19	Q2/19	Q3/19	Q4/19	Q1/20	Q2/20	Q3/20
Juvenile Dependency (DEP)								
Previous Pending (+)	411	434	428	590	587	647	638	692
New Filing (+)	193	199	227	193	192	133	112	99
Resolved (-)	145	201	142	190	155	137	65	152
End Pending	434	428	590	587	647	638	692	635
Resolution Rate*	0.751	1.010	0.626	0.984	0.807	1.030	0.580	1.535
Juvenile Termination (TER)								
Previous Pending (+)	231	244	260	241	248	277	297	332
New Filing (+)	82	74	39	45	67	62	64	68
Resolved (-)	71	58	58	34	37	40	15	63
End Pending	244	260	241	248	277	297	332	341
Resolution Rate*	0.866	0.784	1.487	0.756	0.552	0.645	0.234	0.926
Juv ARY/CHINS/OTHERS								
Previous Pending (+)	128	146	152	86	97	100	119	128
New Filing (+)	85	42	63	57	44	50	22	22
Resolved (-)	36	43	49	50	41	29	14	38
End Pending	146	152	86	97	100	119	128	115
Resolution Rate*	0.424	1.024	0.778	0.877	0.932	0.580	0.636	1.727
Juvenile Truancy								
Previous Pending (+)	2017	2041	2313	2556	2244	2112	1976	1484
New Filing (+)	461	659	620	109	318	448	45	0
Resolved (-)	420	386	377	424	445	548	497	424
End Pending	2041	2313	2556	2244	2112	1976	1484	1042
Resolution Rate*	0.911	0.586	0.608	3.890	1.399	1.223	11.044	NA
Juvenile Offender								
Previous Pending (+)	595	464	479	539	614	647	659	758
New Filing (+)	241	276	333	273	239	268	216	147
Resolved (-)	320	261	278	250	245	232	132	251
End Pending	464	479	539	614	647	659	758	649
Resolution Rate*	1.328	0.946	0.835	0.916	1.025	0.866	0.611	1.707
Criminal RALJ								
Previous Pending (+)	118	126	133	129	136	140	147	96
New Filing (+)	28	42	27	33	44	34	6	8
Resolved (-)	21	35	32	26	41	22	39	40
End Pending	126	133	129	136	140	147	96	77
Resolution Rate*	0.750	0.833	1.185	0.788	0.932	0.647	6.560	5.000
Civil RALJ								
Previous Pending (+)	37	38	34	36	47	51	38	36
New Filing (+)	16	11	23	16	31	12	8	10
Resolved (-)	15	17	13	10	27	25	11	16
End Pending	38	34	36	47	51	38	36	32
Resolution Rate*	0.938	1.545	0.565	0.625	0.871	2.083	1.375	1.600

* A value of "Resolution Rate" less than one indicates the resolution pace is slower than the filing pace.



Note: "General Civil" is specifically defined in this report. The category of "General Civil" does **not** include the following case types: domestic, probate, guardianship, adoption, Parentage, mental illness, juvenile cases (dependency, at-risk youth, child-in-need of service), civil RALJ, and tax filings that don't require judicial resources ("matters filed with clerk"). Please check the Appendix for the cause codes in the "General Civil" category.

Table 5. Age of Pending Cases

King County Superior Court

Reporting Category	Age of Pending Cases and # of Cases in Each Age Interval							
	Q4/18	Q1/19	Q2/19	Q3/19	Q4/19	Q1/20	Q2/20	Q3/20
Criminal (excl. RALJ): # of Cases	3150	3176	3420	3579	3564	4148	5113	5969
Age (days)								
Median (50 percentile)	132	135	107	95	105	92	137	178
90 percentile	450	445	418	433	430	365	412	442
# of Cases in Age Interval								
0 - 60 days (0 - 2 months)	814	1023	1232	1330	1169	1710	1188	1179
61 - 120 days (3 - 4 months)	655	524	592	724	789	747	1039	916
121 - 180 days (5 - 6 months)	483	415	440	390	473	513	856	741
181 - 270 days (7 - 9 months)	439	455	409	409	414	525	840	1214
> 270 days (> 9 months)	759	759	747	726	719	693	1190	1609
Civil (excl. RALJ): # of Cases	8243	8813	9135	8152	8576	8515	7900	7821
Age (days)								
Median (50 percentile)	143	138	137	158	146	153	179	205
90 percentile	405	426	433	418	399	420	484	539
# of Cases in Age Interval								
0 - 120 days (0 - 4 months)	3725	3994	4078	3314	3808	3483	2714	2652
121 - 240 days (5 - 8 months)	1908	2188	2328	2292	2172	2357	2198	1902
241 - 360 days (9 - 12 months)	1550	1263	1436	1430	1464	1388	1359	1523
361 - 540 days (13 - 18 months)	733	938	830	656	771	891	1067	966
541 - 720 days (19 - 24 months)	194	275	303	307	202	228	365	508
> 720 days (> 24 months)	133	155	160	173	160	168	197	270
Domestic: # of Cases	4381	4529	4478	4516	4384	4431	4511	4773
Age (days)								
Median (50 percentile)	136	145	118	117	131	144	172	155
90 percentile	443	471	474	460	477	468	511	525
# of Cases in Age Interval								
0 - 120 days (0 - 4 months)	2004	2017	2252	2303	2087	1990	1581	2124
121 - 240 days (5 - 8 months)	1152	1188	969	1082	1105	1213	1283	984
241 - 360 days (9 - 12 months)	627	618	569	476	569	593	784	749
361 - 540 days (13 - 18 months)	267	342	319	289	243	258	448	462
> 540 days (> 18 months)	331	364	369	366	380	377	415	454
Probate: # of Cases	1146	1235	1476	1545	690	778	869	923
Age (days)								
Median (50 percentile)	480	517	517	570	347	298	230	296
90 percentile	1623	1648	1612	1672	1640	1623	1574	1631
# of Cases in Age Interval								
0 - 120 days (0 - 4 months)	204	202	288	247	220	257	311	295
121 - 240 days (5 - 8 months)	108	146	160	173	83	109	132	119
241 - 360 days (9 - 12 months)	135	101	131	164	50	58	69	105
361 - 540 days (13 - 18 months)	177	191	196	162	65	63	68	91
> 540 days (> 18 months)	522	595	701	799	272	291	289	313
Guardianship: # of Cases	409	509	377	429	235	240	285	281
Age (days)								
Median (50 percentile)	125	118	177	241	133	139	125	136
90 percentile	612	650	741	797	881	976	1028	1121
# of Cases in Age Interval								
0 - 120 days (0 - 4 months)	204	255	125	155	115	115	139	55
121 - 240 days (5 - 8 months)	58	84	117	57	24	32	39	15
241 - 360 days (9 - 12 months)	39	43	32	98	25	8	19	10
361 - 540 days (13 - 18 months)	53	57	27	33	19	28	19	70
> 540 days (> 18 months)	55	70	76	86	52	57	15	55

Table 5 (cont.). Age of Pending Cases

King County Superior Court

Reporting Category	Age of Pending Cases and # of Cases in Each Age Interval							
	Q4/18	Q1/19	Q2/19	Q3/19	Q4/19	Q1/20	Q2/20	Q3/20
Adoption: # of Cases	174	197	205	196	184	220	234	237
Age (days)								
Median (50 percentile)	136	149	159	198	291	225	274	344
90 percentile	522	612	691	795	887	966	1051	1144
# of Cases in Age Interval								
0 - 120 days (0 - 4 months)	81	83	87	76	53	81	64	73
121 - 240 days (5 - 8 months)	37	44	41	32	30	31	42	29
241 - 360 days (9 - 12 months)	9	23	21	30	22	18	27	20
361 - 540 days (13 - 18 months)	31	13	13	17	30	37	25	27
> 540 days (> 18 months)	16	34	43	41	49	53	29	88
Parentage: # of Cases	225	246	242	253	251	239	268	249
Age (days)								
Median (50 percentile)	115	102	83	94	105	126	171	182
90 percentile	271	306	270	270	300	335	383	433
# of Cases in Age Interval								
0 - 120 days (0 - 4 months)	117	143	156	158	137	117	80	100
121 - 240 days (5 - 8 months)	74	61	57	58	69	75	112	64
241 - 360 days (9 - 12 months)	25	26	11	22	25	29	43	45
361 - 540 days (13 - 18 months)	6	11	13	9	10	12	23	28
> 540 days (> 18 months)	3	5	5	6	10	6	5	12
ITA (civil commitment): # of Cases	283	206	201	246	288	263	433	315
Age (days)								
Median (50 percentile)	28	13	18	14	20	56	53	28
90 percentile	179	220	307	371	420	511	540	206
# of Cases in Age Interval								
0 - 120 days (0 - 4 months)	211	169	149	188	219	179	295	265
121 - 240 days (5 - 8 months)	57	17	24	10	14	27	63	23
> 240 days (> 8 months)	15	20	28	48	55	57	58	27
Juv Dependency (DEP): # of Cases	434	428	590	587	647	638	692	635
Age (days)								
Median (50 percentile)	139	118	150	194	195	242	284	349
90 percentile	510	571	631	713	784	847	916	1009
# of Cases in Age Interval								
0 - 60 days (0 - 2 months)	126	135	139	112	121	84	64	64
61 - 120 days (3 - 4 months)	71	85	106	118	95	88	84	65
121 - 180 days (5 - 6 months)	64	40	76	48	82	86	67	46
181 - 270 days (7 - 9 months)	60	37	75	81	99	88	126	59
> 270 days (> 9 months)	113	131	194	228	250	292	351	401
Juv Termination (TER): # of Cases	244	260	241	248	277	297	332	341
Age (days)								
Median (50 percentile)	170	188	269	329	340	389	320	349
90 percentile	508	555	646	738	809	879	935	1018
# of Cases in Age Interval								
0 - 60 days (0 - 2 months)	51	47	28	31	46	38	23	46
61 - 120 days (3 - 4 months)	40	40	23	18	30	32	49	26
121 - 180 days (5 - 6 months)	37	37	33	19	21	27	49	42
181 - 270 days (7 - 9 months)	47	45	38	37	15	30	30	39
> 270 days (> 9 months)	69	91	119	143	165	170	181	188
ARY/CHINS/OTHER: # of Cases	146	152	86	97	100	119	128	115
Age (days)								
Median (50 percentile)	132	200	174	132	188	188	240	314
90 percentile	543	632	646	719	811	900	903	996
# of Cases in Age Interval								
0 - 60 days (0 - 2 months)	42	30	33	28	20	27	16	15
61 - 120 days (3 - 4 months)	25	14	6	19	16	18	13	12
121 - 180 days (5 - 6 months)	16	28	5	7	11	13	25	6
181 - 270 days (7 - 9 months)	10	20	6	5	13	12	14	24
> 270 days (> 9 months)	53	60	36	38	40	49	60	58

Table 5 (cont.). Age of Pending Cases

King County Superior Court

Reporting Category	Age of Pending Cases and # of Cases in Each Age Interval							
	Q4/18	Q1/19	Q2/19	Q3/19	Q4/19	Q1/20	Q2/20	Q3/20
Juvenile Truancy: # of Cases	2041	2313	2556	2244	2112	1976	1484	1042
Age (days)								
Median (50 percentile)	278	290	194	251	300	315	321	300
90 percentile	615	688	613	706	769	718	747	575
# of Cases in Age Interval								
0 - 60 days (0 - 2 months)	385	446	419	63	240	290	26	.0
61 - 120 days (3 - 4 months)	80	416	428	248	70	259	108	20
121 - 180 days (5 - 6 months)	21	195	360	342	92	154	332	18
181 - 270 days (7 - 9 months)	482	31	367	585	425	88	250	414
> 270 days (> 9 months)	1073	1225	982	1006	1285	1185	768	590
Juvenile Offender: # of Cases	464	479	539	614	647	659	758	649
Age (days)								
Median (50 percentile)	116	116	101	110	144	145	167	211
90 percentile	300	362	355	405	459	475	477	567
# of Cases in Age Interval								
0 - 60 days (0 - 2 months)	119	157	163	173	164	154	143	110
61 - 120 days (3 - 4 months)	125	88	138	151	124	148	138	98
121 - 180 days (5 - 6 months)	101	70	75	108	104	75	129	88
181 - 270 days (7 - 9 months)	56	80	55	71	124	106	107	108
> 270 days (> 9 months)	63	84	108	111	131	176	241	245
Criminal RALJ: # of Cases	126	133	129	136	140	147	96	77
Age (days)								
Median (50 percentile)	191	170	178	212	174	179	209	304
90 percentile	577	592	683	706	609	643	432	1204
# of Cases in Age Interval								
0 - 60 days (0 - 2 months)	21	25	17	25	30	24	10	6
61 - 120 days (3 - 4 months)	23	28	21	14	28	30	22	5
121 - 180 days (5 - 6 months)	16	16	29	17	15	20	32	2
181 - 270 days (7 - 9 months)	18	23	21	29	16	24	29	18
> 270 days (> 9 months)	48	41	41	51	51	49	10	46
Civil RALJ: # of Cases	38	34	36	47	51	38	36	32
Age (days)								
Median (50 percentile)	109	98	118	108	61	115	183	221
90 percentile	277	289	355	298	239	288	341	434
# of Cases in Age Interval								
0 - 60 days (0 - 2 months)	15	6	8	10	25	9	0	5
61 - 120 days (3 - 4 months)	6	16	10	14	10	14	10	5
121 - 180 days (5 - 6 months)	5	6	8	11	7	6	7	3
181 - 270 days (7 - 9 months)	8	2	6	4	5	5	13	6
> 270 days (> 9 months)	4	4	4	8	4	4	6	13

Table 6. Seattle vs. Regional Justice Center (KNT): Filing, Resolution, Pending Caseload (%)

King County Superior Court

	Q3/19		Q4/19		Q1/20		Q2/20		Q3/20	
	SEA	KNT	SEA	KNT	SEA	KNT	SEA	KNT	SEA	KNT
Filings Total <i>(excl. filings with clerk)</i>	64%	36%	64%	36%	63%	37%	71%	29%	68%	32%
Criminal (excl. RALJ)	61%	39%	63%	37%	61%	39%	60%	40%	56%	44%
Civil (excl. RALJ)	55%	45%	55%	45%	54%	46%	62%	38%	60%	40%
Domestic	59%	41%	57%	43%	61%	39%	63%	37%	61%	39%
Probate	70%	30%	71%	29%	73%	27%	75%	25%	72%	28%
Guardianship	64%	36%	67%	33%	64%	36%	61%	39%	68%	32%
Adoption	72%	28%	68%	32%	70%	30%	81%	19%	73%	27%
Parentage	44%	56%	41%	59%	46%	55%	45%	55%	40%	60%
ITA (civil commitment)	100%	0%	100%	0%	100%	0%	100%	0%	100%	0%
Juv. Dependency (DEP)	56%	44%	69%	31%	62%	38%	80%	20%	76%	24%
Juv. Termination (TER)	64%	36%	61%	39%	63%	37%	63%	37%	49%	52%
Juvenile ARY/CHINS/Other	53%	47%	50%	50%	50%	50%	41%	59%	55%	46%
Juvenile Truancy	50%	50%	53%	47%	32%	68%	82%	18%	NA	NA
Juvenile Offender	100%	0%	100%	0%	100%	0%	100%	0%	100%	0%
Criminal RALJ	73%	27%	95%	5%	82%	18%	67%	33%	75%	25%
Civil RALJ	88%	13%	84%	16%	92%	8%	88%	12%	80%	20%
Resolution Total <i>(excl. filings with clerk)</i>	63%	37%	62%	38%	62%	38%	70%	30%	68%	32%
Criminal (excl. RALJ)	58%	42%	58%	42%	58%	42%	59%	41%	59%	41%
Civil (excl. RALJ)	54%	46%	53%	47%	54%	46%	61%	39%	61%	39%
Domestic	58%	42%	59%	41%	58%	42%	63%	37%	61%	39%
Probate	71%	29%	71%	29%	74%	26%	73%	27%	72%	28%
Guardianship	61%	39%	69%	31%	67%	33%	66%	34%	58%	42%
Adoption	71%	29%	69%	31%	65%	35%	78%	22%	68%	32%
Parentage	40%	60%	58%	42%	42%	58%	30%	70%	52%	48%
ITA (civil commitment)	100%	0%	100%	0%	100%	0%	100%	0%	100%	0%
Juv. Dependency (DEP)	55%	45%	61%	39%	69%	31%	65%	35%	62%	38%
Juv. Termination (TER)	74%	26%	59%	41%	58%	43%	87%	13%	62%	38%
Juvenile ARY/CHINS/Other	56%	44%	59%	41%	66%	35%	36%	64%	40%	61%
Juvenile Truancy	50%	50%	41%	59%	51%	49%	62%	38%	40%	60%
Juvenile Offender	100%	0%	100%	0%	100%	0%	100%	0%	100%	0%
Criminal RALJ	88%	12%	88%	12%	82%	18%	77%	23%	93%	8%
Civil RALJ	100%	0%	89%	11%	84%	16%	91%	9%	88%	13%
Pending Total <i>(excl. filings with clerk)</i>	63%	37%	63%	37%	63%	37%	64%	36%	63%	37%
Criminal (excl. RALJ)	60%	40%	60%	40%	62%	38%	62%	38%	61%	39%
Civil (excl. RALJ)	65%	35%	66%	34%	64%	36%	65%	35%	65%	35%
Domestic	58%	42%	58%	42%	59%	41%	59%	41%	59%	41%
Probate	74%	26%	67%	33%	66%	34%	67%	33%	67%	33%
Guardianship	68%	32%	62%	38%	61%	39%	57%	43%	62%	38%
Adoption	66%	34%	66%	34%	69%	31%	71%	30%	73%	27%
Parentage	45%	55%	37%	63%	37%	63%	39%	61%	35%	65%
ITA (civil commitment)	100%	0%	100%	0%	100%	0%	100%	0%	100%	0%
Juv. Dependency (DEP)	59%	41%	60%	40%	59%	41%	61%	39%	63%	37%
Juv. Termination (TER)	65%	35%	64%	36%	65%	35%	66%	34%	63%	37%
Juvenile ARY/CHINS/Other	54%	46%	50%	50%	46%	54%	48%	52%	50%	50%
Juvenile Truancy	51%	49%	54%	46%	50%	50%	47%	53%	49%	51%
Juvenile Offender	100%	0%	100%	0%	100%	0%	100%	0%	100%	0%
Criminal RALJ	87%	13%	89%	11%	88%	12%	92%	8%	90%	10%
Civil RALJ	83%	17%	82%	18%	84%	16%	83%	17%	78%	22%

Table 7. Quarterly Utilization of Pro Tem Judges/Commissioners ⁽¹⁾

Category	Q2/18	Q3/18	Q4/18	Q1/19	Q2/19	Q3/19	Q4/19	Q1/20	Q2/20	Q3/20
Grand Total	2132	1362	1850	1084	2814	1454	2023	1125	346	1045
FTE Equivalent ⁽²⁾	4.7	3.0	4.1	2.4	6.3	3.2	4.5	2.5	0.8	2.3
By Work Type										
Pro Tem Judge	357	164	274	179	498	248	503	148	71	138
Pro Tem Commissioner	1775	1168	1576	905	2316	1206	1520	978	284	907
By Location										
KCCH	822	731	981	434	1602	632	919	378	197	580
MRJC	659	294	403	235	579	411	466	331	35	225
Juvenile	511	161	292	323	462	335	456	284	48	184
ITA	141	176	37	93	171	75	182	132	75	56
Other	0	0	136	0	0	0	0	0	0	0
By Calendar Type										
Criminal	63	24	145	10	133	54	145	42	24	63
Civil	0	0	0	0	0	0	0	0	0	0
Ex Parte	630	231	411	200	432	322	476	143	21	144
Family Law/Domestic	606	650	782	429	1377	588	661	482	167	550
Dependency	327	107	216	184	336	210	196	222	22	158
Juvenile Offender	123	46	57	124	81	95	230	58	27	26
BECCA	61	8	19	16	45	30	30	5	0	0
ITA	141	176	136	93	171	75	182	132	75	56
Juvenile Drug Court	0	0	0	0	0	0	0	0	0	0
Family Treatment Court	0	0	0	0	0	0	0	0	0	0
Plea Calendar	145	111	35	26	205	63	81	43	21	49
Status/Non-Compliance	11	0	0	0	0	0	5	0	0	0
Other or Unspecified	26	9	48	3	34	17	18	0	0	0
By Reason										
Vacation Backfill	738	621	233	121	390	187	345	85	190	96
Medical Backfill	197	137	1431	835	2144	1151	1475	926	46	852
Duty Time	470	320	15	42	63	32	127	62	69	42
Conference Coverage	37	0	134	86	217	84	76	53	0	83
Congestion	264	57	0	0	0	0	0	0	36	0
Vacancy Coverage	426	124	0	0	0	0	0	0	14	0
Other	1	104	37	0	0	0	0	0	0	0

(1) This table is based on the time sheet for compensation

(2) Judge FTE Equivalent = # of hours / [7.5 hours/day * 20 days/month * 3 months] = # of hours/450.

Data for the most current quarter are incomplete at reporting time and will be updated in next quarterly report.

The Pro Tem hours are provided quarterly by the Administrative Services Department of King County Superior Court.

Appendix Glossary and Definition

Active Status

A case is active if it is not on suspense status (see Suspense Status).

Adoption and Parentage Cases (case type 5)

ADP - Adoption
CFI - Confidential Intermediary
CHN - Confidential Change of Name
DIP - Disestablishment of Parentage
MDS - Modification/Support Only
MOD - Modification
MSC - Miscellaneous
OAA - Open Adoption Agreement
PAD - De Facto Parentage
PAG - Pre Birth Establish Parentage Genetic
PAS - Establish Parentage Gestational Surrogacy
PAT - Parentage
PPR - Initial Pre Placement Report
PRC - Parentage Rescission/Challenge
PUR - Parentage (URES/UIFSA)
REL - Relinquishment
ROB - Relocation Objection
TER - Termination of Parental Rights

Case

A case is defined as a filing with an assigned case number.

Civil Cases (case type 2, no RALJ)

ALR - Administrative Law Review
ALRLI - L&I Administrative Law Review
AOD - Assurance of Discontinuance
ASB - Asbestos
ASP - Asbestos Personal Injury
ASW - Asbestos Wrongful Death
BAT - Petition to Appeal/Amend Ballot Title
CAA - Motion to Confirm/Compel Arbitration Award
CHN - Non Confidential Change of Name
COL - Collection
COM - Commercial
CON - Condemnation
CRP - Certificate of Restoration of Opportunity
CRR - Petition for Certificate of Rehabilitation
DOL - Appeal Licensing Revocation
DSF - Notice of Deposit of Surplus Funds from Trustee's Sale of Real Property
DVP - Domestic Violence
ECP - Enforcement of Canadian Protection Order
EOM - Emancipation of Minor
FOR - Foreclosure
FPO - Foreign Protection Order
FVL - Motion to Show Cause /Frivolous Lien
HAR - Unlawful Harassment
HSI - Application for Health & Safety Inspection
INJ - Injunction
IPL - Complaint for Interpleader
LUP - Land Use Petition
MAL - Other Malpractice
MED - Medical Malpractice
MER - Meretricious Relationships
MHA - Malicious Harassment
MSC - Miscellaneous
MST - Minor Settlement
MWP - Minor Work Permit
NJF - Non Judicial Filing
OSS - Petition to Issue Out of State Subpoena
PBC - Petition for Birth Certificate Change
PBJ - Petition for Justification /Bail Bond Company
PCC - Petition for Civil Commitment
PFA - Property Fairness Act

PIN - Personal Injury
PPT - Petition for Perpetuation of Testimony
PRA - Public Records Act
PRG - Property Damage /Gangs
PRP - Property Damage
PVO - Petition for Vehicle Ownership
QTI - Quiet Title
RCV - Petition to Appoint Receiver
RDR - Relief from Duty to Register
RFR - Restoration of Firearms Rights
RRC - Remove Restricted Covenant
SCA - Small Claims Appeal
SDR - School District /Required Action Plan
SER - Subdivision Election Process Law Review
SPC - Seizure of Property From Commission of a Crime
SPR - Seizure of Property Resulting From a Crime
STK - Stalking Protection
SXP - Sexual Assault Protection
TMV - Tort /Motor Vehicle
TSS - Petition for Approval of Transfer of Structured Settlement
TTO - Tort /Other
UND - Unlawful Detainer
VAP - Vulnerable Adult Protection Order
VEP - Voter Election Process Law Review
VVT - Victims of Motor Vehicle Theft /Civil Action
WDE - Wrongful Death
WHC - Writ of Habeas Corpus
WMW - Miscellaneous Writs
WRM - Writ of Mandamus
WRR - Writ of Restitution
WRV - Writ of Review
XRP - Extreme Risk Protection Order

Civil Matters Filed with Clerk (case type 2)

ABJ - Abstract of Judgment
FJU - Foreign Judgment
TAX - Tax Warrants
TRJ - Transcript of Judgment
CFJ - Petition for Order Granting Judgment on Confession of Judgment

Civil RALJ Cases (case type 2)

LCA - Lower Court Appeal /Civil
LCI - Lower Court Appeal /Infractions

Completion

A case is completed if dispositive document is filed with the court following resolution.

Criminal Cases (case type 1, no RALJ)

Adult criminal cases, excluding appeals from courts of limited jurisdiction. This reporting category includes the following crime categories within SCOMIS case type 1:

Homicide
Sex Crime
Robbery
Assault
Theft/Burglary
Motor Vehicle Theft
Controlled Substance
Others

Criminal RALJ Cases (case type 1)

CRJ - Criminal RALJ

Domestic Cases (case type 3)

CIR - Committed Intimate Relationship
CUS - Child Custody
DIC - Dissolution w/ Children
DIN - Dissolution no Children
DIS - Dissolution
DPC - Dissolution of Domestic Partnership w/ Children
DPN - Dissolution of Domestic Partnership /No Children
FJU - Out of State Support Registration /Foreign Judgment
INC - Annulment /Inv of Marriage w/ Children
IND - Annulment /Inv of Domestic Partnership w/ Children
INP - Invalidity, Domestic Partnership
INV - Annulment /Invalidity
MDS - Modification/Support Only
MOD - Modification
MSC - Miscellaneous
MWA - Mandatory Wage Assignment
OSC - Out of State Custody
PPS - Parenting Plan / Child Support
PSO - Petition for Entry of KC Support Order
RCV - Relative Child Visitation
RIC - Reciprocal, Resp in County
ROB - Relocation /Objection
ROC - Reciprocal, Resp out of County
RVC - Relative Child Visits
SDC - Legal Separation, Domestic Partnership w/ Children
SEC - Legal Separation w/ Children
SEP - Legal Separation
SPD - Legal Separation, Domestic Partnership /No Children
TSS - Structured Settlement

Jury Trial

A hearing is reported as a jury trial if the jury is impaneled.

Juvenile BECCA Cases (case type 7)

ARY - At Risk Youth
CNS - Child In Need Of Services
DDP - Developmental Disability
DGN - Dependency Guardianship
EFC - Extended Foster Care, Dependency
GFC - Guardianship Foster Children
RPR - Reinstatement of Parental Rights
RVS - Relative Visitation
TRU - Truancy
VYG - Vulnerable Youth Guardianship

Juvenile Dependency Cases (case type 7)

DEP - Dependency
TER - Termination of Parental Rights

Juvenile Offender Cases (case type 8)

Homicide
Sex Crime
Robbery
Assault
Theft/Burglary
Motor Vehicle Theft
Controlled Substance
Others

Involuntary Treatment Act Cases (case type 6)

Alcoholic Treatment (ALT)
ITA - Adult (MI)
ITA - Family (MIF)
ITA - Juvenile (MIJ)

Non-Jury Trial

A hearing is reported as a non-jury trial if an opening statement is made, waived, or reserved.

Pending Case

A case is defined as pending if it is unresolved and active (not in suspense).

Post-disposition Modifications

Petition to modify parenting plan after the resolution of the original case, based on the modification schedule.

Probate and Guardianship Cases (case type 5)

ABS - Absentee
AOS - Affidavit of Successor
ASE - Affidavit of Small Estate
DSC - Disclaimer
EST - Estate
FNW - Foreign Will
G/E - Guardianship/Estate
GDE - Guardianship of the Estate
GDN - Guardianship
GDP - Guardianship of the Person
LGD - Limited Guardianship
LGE - Limited Guardianship of the Estate
LGP - Limited Guardianship of the Person
MGD - Minor Guardianship
MSC - Miscellaneous
MST - Minor Settlement
NJB - Non Judicial Binding/TEDRA Agreement
NNC - Non Probate Notice to Creditor
POA - Petition for Relief (RCW 11.94) /Power of Attorney
RGR - Registration of Guardianship
RTR - Registration of Trust /Trust Situs
SNT - Special Needs Trust
TDR - Trust/Estate Dispute Resolution
TRS - Trust
WLL - Will Only

Resolution

A case is resolved if all issues in the complaint are fully adjudicated.

Suspended Case

A case is placed in suspense status from active status during the reporting period.

Suspense Status

A case is on suspense status if it is on warrant, appeal, stay, mediation, arbitration ("Deferred Prosecution" is not a suspense status, but is treated as a resolution).

Trial

A hearing set before a judge or jury in which all the issues in the case are meant to be resolved. A trial normally includes opening statements to the court or jury stating what evidence will show, introduction of witnesses and exhibits for direct and cross examination, final arguments to the court or jury in which counsel argue both the evidence and the law, and judgment by the court or jury stating what the facts of the case are and what law applies to the facts. In a jury case, it also includes the selection of the jury. A trial can be held for one or more cases. A single trial may be held to adjudicate more than one case (as defined above).