



# King County

Department of Judicial Administration

*Barbara Miner*

*Director and Superior Court Clerk*

(206) 296-9300 (206) 296-0100 TTY/TDD

King County Superior Court

## Civil Department Statistical Report

November 2021

Department of Judicial Administration

Prepared by: Shiquan Liao, Ph.D., Statistician

December 15, 2021

**Report #: CIVIL-2021-11**

*Seattle:*  
516 Third Avenue Room E609  
Seattle, WA 98104-2386

*Regional Justice Center:*  
401 Fourth Avenue North Room 2C  
Kent, WA 98032-4429

*Juvenile Division:*  
1211 East Alder Room 3015  
Seattle, WA 98122-5598

## Civil Statistics Summary

**NOTE: Washington State Supreme Court orders related to the coronavirus pandemic, beginning March 2020, affect the statistics for the foreseeable future.**

The civil statistics report provides an overview of caseload for the civil department. The report includes the number of filings, number of resolutions, number of pending cases, age of resolved cases, and age of pending cases for both SEA and MRJC locations.

*The following categories are included in this report: **Civil, Domestic, Probate, Guardianship, Adoption, and Parentage**. This report includes all cases in these categories, regardless of whether or not a judge is assigned at filing.*

*Please note that the category of “civil” in the tables of this report is more narrowly defined. Readers are encouraged to check the Appendix at the end of this report for precise definition of the terminology used in this report.*

- **Filings (Table 1, Figures 1)**

In November 2021, the number of filings was 2,280 cases (SEA: 1,418; MRJC: 862). Of those cases filed in November 2021, 38% were MRJC cases, and the remaining 62% were SEA cases.

- **Resolutions (Table 2, Figures 2)**

The total resolutions in November 2021 were 2,400 cases (SEA: 1,524; MRJC: 876). Of those cases resolved in November 2021, 37% of the resolutions were MRJC cases.

- **Age of Resolved Cases (Table 3)**

Table 3 shows the comparison between the court-adopted timeline standard (as suggested by the State Advisory Committee) with the actual age of resolved cases (time from filing to resolution). Even though the standard is not regularly met, the resolution time does not show any significant change over time.

- **Pending Caseload (Table 4, Figures 3) and Age of Pending Cases (Table 5)**

At the end of November 2021, the pending caseload for the civil department was 13,350 cases (8,379 or 63% were SEA cases and 4,971 or 37% were MRJC cases). The age breakdown of pending cases is presented in Table 5. The pending caseload shows a number of “aged” cases remaining unresolved: SEA has 323 civil cases over 24 months, and 261 domestic cases over 18 months on its pending caseload. The MRJC has 218 general civil cases over 24 months and 244 domestic cases over 18 months on its pending caseload.

**Conclusions: Filings in recent months have been very low due to COVID-19. Resolution pace also reflects the pattern of low filing activities. At the end of November 2021, the total pending caseload in the reporting categories was 13,350 cases. The pending caseload in the same reporting categories was 12,362, 13,567, 13,295, 15,059, 14,371, and 14,085 at the year end of 2015, 2016, 2017, 2018, 2019, and 2020 respectively.**

Figure 1. Monthly Filings for SEA, MRJC and SEA/MRJC Combined

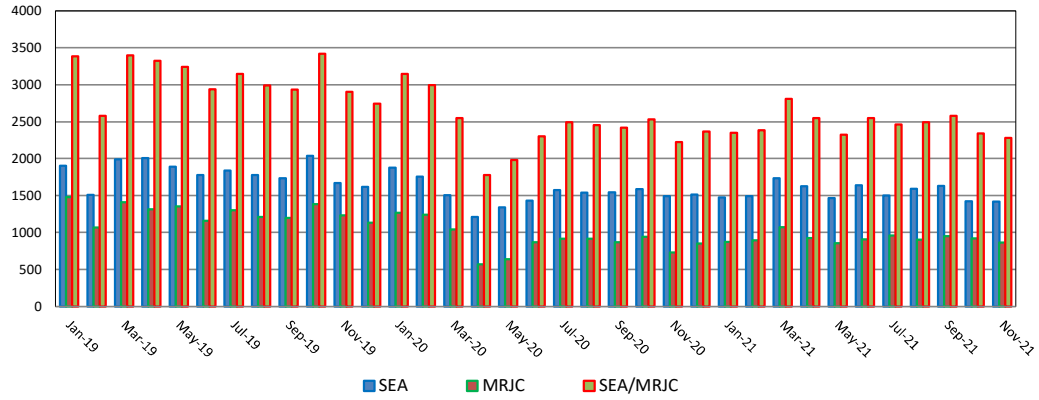


Figure 2. Monthly Resolutions for SEA, MRJC and SEA/MRJC Combined

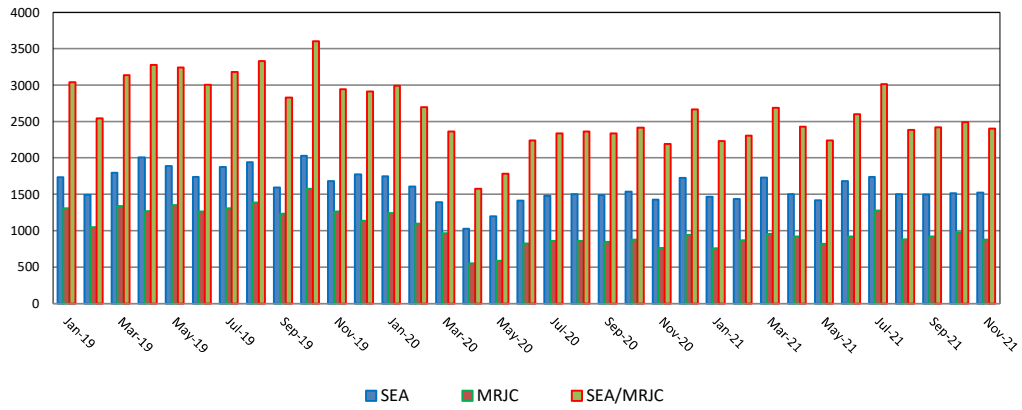


Figure 3. Monthly Pending Caseload for SEA, MRJC and SEA/MRJC Combined

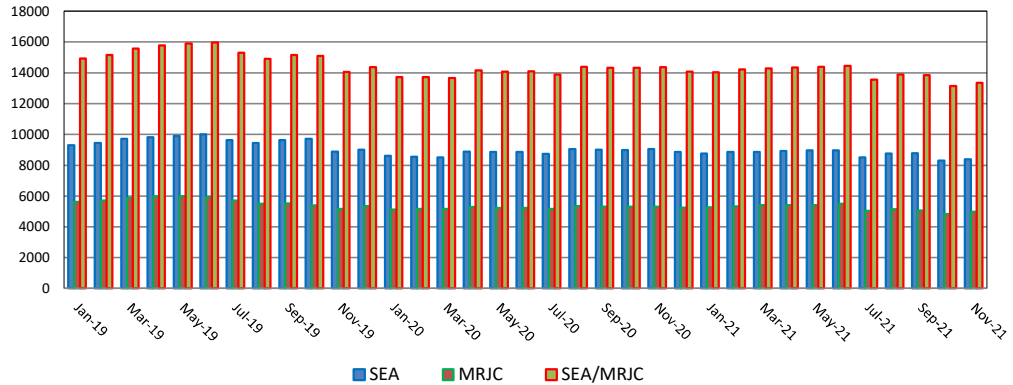


Table 1. Monthly New Filings

SEA	Jan	Feb	Mar	Apr	May	Jun	Jul	Aug	Sep	Oct	Nov	Dec
<b>TOTAL - SEA</b>												
2019	1905	1508	1990	2010	1890	1778	1842	1778	1733	2035	1670	1616
2020	1879	1755	1504	1209	1340	1433	1575	1540	1547	1587	1495	1515
2021	1473	1490	1734	1626	1467	1638	1501	1592	1632	1422	1418	
<b>Civil - SEA</b>												
2019	1009	799	1070	1026	1018	954	947	873	972	1160	897	893
2020	971	876	840	555	626	657	741	709	714	782	717	697
2021	662	705	761	713	685	699	712	673	717	632	598	
<b>Domestic - SEA</b>												
2019	372	257	379	401	343	334	375	420	357	393	336	273
2020	385	350	287	211	222	314	351	331	365	325	263	279
2021	276	276	352	338	297	341	300	389	390	268	319	
<b>Probate - SEA</b>												
2019	423	382	465	488	446	411	416	389	327	403	348	390
2020	441	429	315	382	430	394	419	417	387	383	415	460
2021	442	433	545	486	418	502	421	447	431	435	426	
<b>Guardianship - SEA</b>												
2019	52	41	39	37	26	35	48	41	32	27	44	28
2020	35	47	33	32	42	33	31	47	40	42	38	36
2021	52	44	36	47	38	46	33	48	52	55	47	
<b>Adoption - SEA</b>												
2019	22	19	17	39	27	25	35	37	24	32	25	21
2020	33	34	16	19	15	26	19	24	31	42	48	20
2021	25	22	22	25	19	32	24	16	20	21	16	
<b>Parentage - SEA</b>												
2019	27	10	20	19	30	19	21	18	21	20	20	11
2020	14	19	13	10	5	9	14	12	10	13	14	23
2021	16	10	18	17	10	18	11	19	22	11	12	

MRJC	Jan	Feb	Mar	Apr	May	Jun	Jul	Aug	Sep	Oct	Nov	Dec
<b>TOTAL - MRJC</b>												
2019	1480	1070	1408	1315	1354	1158	1303	1211	1200	1384	1232	1131
2020	1267	1242	1041	568	642	869	916	915	871	941	731	850
2021	875	893	1072	924	855	907	959	901	948	919	862	
<b>Civil - MRJC</b>												
2019	1003	711	888	810	870	695	826	688	725	848	777	743
2020	839	781	677	317	355	457	494	479	444	515	394	469
2021	473	475	523	451	426	479	492	465	489	463	416	
<b>Domestic - MRJC</b>												
2019	244	174	271	279	253	253	264	279	261	286	269	207
2020	229	237	194	112	108	212	232	219	230	226	159	186
2021	186	182	255	214	204	194	231	199	211	176	189	
<b>Probate - MRJC</b>												
2019	176	132	184	162	164	149	149	174	166	189	137	134
2020	155	153	129	121	127	159	144	168	155	157	139	148
2021	167	191	237	207	185	190	193	196	185	197	187	
<b>Guardianship - MRJC</b>												
2019	18	24	26	28	23	21	25	30	13	15	17	16
2020	19	31	15	12	29	26	18	19	19	19	22	22
2021	20	18	34	23	17	13	21	21	37	52	39	
<b>Adoption - MRJC</b>												
2019	18	24	26	28	23	21	25	30	13	15	18	8
2020	10	16	10	4	9	1	15	7	5	5	8	9
2021	5	8	7	9	7	10	3	6	7	9	12	
<b>Parentage - MRJC</b>												
2019	31	16	21	16	30	26	26	24	27	26	24	23
2020	15	24	16	1	14	14	13	23	18	19	9	16
2021	24	19	16	20	16	21	19	4	19	22	19	

“Civil” includes all civil actions (including RALJ), except “Matters Filed with Clerk” (Petition for Order Granting Judgment on Confession of Judgment, Tax Warrants, Abstract of Judgment, Foreign Judgment, and Transcript of Judgment), Domestic, Probate, Guardianship, Adoption, and Paternity cases.

Table 2. Monthly Resolutions

SEA	Jan	Feb	Mar	Apr	May	Jun	Jul	Aug	Sep	Oct	Nov	Dec
<b>TOTAL - SEA</b>												
2019	1787	1493	1796	2005	1889	1737	1874	1939	1594	2027	1681	1775
2020	1748	1603	1392	1024	1197	1414	1479	1504	1485	1538	1429	1722
2021	1467	1436	1729	1504	1418	1682	1738	1504	1496	1515	1524	
<b>Civil - SEA</b>												
2019	976	763	946	969	1016	919	975	1038	885	1123	954	886
2020	919	849	777	484	513	665	717	749	751	759	667	773
2021	695	624	785	618	672	756	889	721	681	720	730	
<b>Domestic - SEA</b>												
2019	288	282	349	433	352	331	405	419	289	398	321	410
2020	329	283	256	183	224	310	294	272	285	341	302	410
2021	321	304	356	329	273	337	331	303	332	301	305	
<b>Probate - SEA</b>												
2019	431	380	444	512	431	404	436	380	337	407	324	389
2020	441	403	289	303	412	390	393	409	377	362	376	449
2021	402	444	507	475	395	507	440	411	406	418	408	
<b>Guardianship - SEA</b>												
2019	57	36	22	36	40	32	23	39	33	46	27	36
2020	25	34	46	41	27	29	28	39	33	29	36	45
2021	28	24	43	37	42	37	39	36	47	43	52	
<b>Adoption - SEA</b>												
2019	21	23	15	31	25	30	21	45	30	22	33	32
2020	15	21	15	8	10	18	29	21	21	29	33	36
2021	13	26	25	25	20	25	26	19	17	16	19	
<b>Parentage - SEA</b>												
2019	14	9	20	24	25	21	14	18	20	31	22	22
2020	19	13	9	5	1	2	18	14	18	18	15	9
2021	8	14	13	20	16	20	13	15	13	17	10	

MRJC	Jan	Feb	Mar	Apr	May	Jun	Jul	Aug	Sep	Oct	Nov	Dec
<b>TOTAL - MRJC</b>												
2019	1308	1048	1337	1270	1354	1266	1306	1388	1236	1576	1264	1137
2020	1242	1095	968	551	586	823	859	860	848	867	762	944
2021	760	868	957	923	819	918	1275	881	923	976	876	
<b>Civil - MRJC</b>												
2019	865	677	866	776	866	800	822	887	784	1023	882	691
2020	801	677	650	305	325	427	461	499	447	460	390	476
2021	406	468	490	449	397	494	840	471	480	525	495	
<b>Domestic - MRJC</b>												
2019	226	182	237	269	262	265	276	264	250	286	219	282
2020	248	231	160	104	113	201	215	148	191	240	188	269
2021	194	197	215	232	198	210	221	195	218	202	177	
<b>Probate - MRJC</b>												
2019	171	149	187	162	160	139	151	159	159	206	125	121
2020	146	136	119	108	132	163	135	160	160	142	135	157
2021	131	160	206	198	176	176	173	182	180	190	153	
<b>Guardianship - MRJC</b>												
2019	18	17	15	17	26	27	17	31	13	23	12	13
2020	14	20	18	26	9	15	25	28	19	16	22	24
2021	15	15	20	25	26	18	11	10	23	36	26	
<b>Adoption - MRJC</b>												
2019	5	6	8	25	14	6	17	16	7	17	9	14
2020	12	8	8	7	4	2	14	6	13	2	4	3
2021	3	7	4	5	5	9	7	10	4	7	9	
<b>Parentage - MRJC</b>												
2019	23	17	24	21	26	29	23	31	23	21	17	16
2020	21	23	13	1	3	15	9	19	18	16	23	15
2021	11	21	22	14	17	11	23	13	18	16	16	

“Civil” includes all civil actions (including RALJ), except “Matters Filed with Clerk” (Petition for Order Granting Judgment on Confession of Judgment, Tax Warrants, Abstract of Judgment, Foreign Judgment, and Transcript of Judgment), Domestic, Probate, Guardianship, Adoption, and Parentage cases.

Table 3. Percentage of Cases Resolved in Specified Time Intervals

SEA	Nov 2020	Dec 2020	Jan 2021	Feb 2021	Mar 2021	Apr 2021	May 2021	Jun 2021	Jul 2021	Aug 2021	Sep 2021	Oct 2021	Nov 2021
<b>Civil - SEA</b>													
90% in 12 months	83%	82%	77%	80%	80%	80%	73%	83%	75%	82%	82%	81%	76%
98% in 18 months	95%	95%	93%	91%	93%	90%	84%	93%	85%	93%	95%	92%	85%
100% in 24 months	98%	98%	98%	95%	97%	96%	91%	96%	91%	97%	97%	97%	91%
<b>Domestic - SEA</b>													
90% in 8 months	53%	60%	54%	57%	55%	60%	63%	58%	58%	61%	65%	60%	57%
98% in 10 months	68%	70%	64%	65%	66%	71%	73%	70%	70%	71%	71%	69%	66%
100% in 14 months	88%	89%	85%	89%	80%	88%	87%	89%	90%	89%	90%	82%	80%
<b>Probate - SEA</b>													
90% in 8 months	99%	98%	98%	98%	99%	98%	96%	98%	98%	98%	99%	99%	98%
98% in 18 months	100%	99%	100%	99%	99%	99%	97%	98%	98%	99%	100%	100%	100%
100% in 36 months	100%	100%	100%	100%	99%	99%	98%	99%	99%	100%	100%	100%	100%
<b>Guardianship - SEA</b>													
90% in 8 months	97%	96%	96%	96%	100%	97%	93%	97%	97%	94%	87%	91%	96%
98% in 18 months	100%	98%	100%	100%	100%	97%	95%	100%	100%	97%	96%	100%	96%
100% in 36 months	100%	100%	100%	100%	100%	97%	98%	100%	100%	100%	96%	100%	98%
<b>Adoption - SEA</b>													
90% in 8 months	94%	92%	85%	89%	80%	88%	100%	88%	92%	100%	88%	94%	95%
98% in 10 months	94%	95%	92%	92%	92%	88%	100%	92%	96%	100%	88%	94%	95%
100% in 14 months	100%	97%	100%	100%	100%	88%	100%	96%	96%	100%	94%	100%	95%
<b>Parentage - SEA</b>													
90% in 8 months	73%	78%	75%	100%	62%	90%	94%	85%	77%	57%	62%	82%	30%
98% in 10 months	80%	78%	100%	100%	62%	90%	94%	85%	85%	64%	62%	82%	50%
100% in 14 months	87%	89%	100%	100%	92%	90%	100%	90%	100%	86%	77%	94%	50%

MRJC	Nov 2020	Dec 2020	Jan 2021	Feb 2021	Mar 2021	Apr 2021	May 2021	Jun 2021	Jul 2021	Aug 2021	Sep 2021	Oct 2021	Nov 2021
<b>Civil - MRJC</b>													
90% in 12 months	91%	87%	86%	87%	90%	90%	89%	92%	70%	87%	79%	89%	81%
98% in 18 months	98%	94%	96%	94%	97%	97%	96%	96%	81%	96%	92%	95%	88%
100% in 24 months	99%	98%	99%	96%	98%	99%	98%	98%	87%	98%	99%	98%	93%
<b>Domestic - MRJC</b>													
90% in 8 months	51%	58%	59%	61%	56%	60%	58%	57%	56%	62%	57%	49%	48%
98% in 10 months	69%	72%	67%	69%	66%	67%	69%	68%	65%	70%	63%	60%	60%
100% in 14 months	89%	86%	89%	82%	81%	79%	80%	86%	82%	91%	86%	75%	73%
<b>Probate - MRJC</b>													
90% in 8 months	96%	96%	99%	98%	100%	98%	98%	98%	99%	98%	98%	99%	98%
98% in 18 months	99%	99%	100%	98%	100%	100%	99%	99%	99%	99%	99%	99%	99%
100% in 36 months	100%	100%	100%	100%	100%	100%	99%	99%	99%	100%	100%	100%	99%
<b>Guardianship - MRJC</b>													
90% in 8 months	100%	96%	73%	93%	67%	100%	100%	94%	100%	90%	91%	100%	92%
98% in 18 months	100%	100%	93%	100%	83%	100%	100%	94%	100%	100%	100%	100%	100%
100% in 36 months	100%	100%	100%	100%	100%	100%	100%	94%	100%	100%	100%	100%	100%
<b>Adoption - MRJC</b>													
90% in 8 months	100%	100%	67%	57%	50%	100%	100%	78%	100%	90%	100%	86%	89%
98% in 10 months	100%	100%	100%	57%	50%	100%	100%	78%	100%	90%	100%	100%	100%
100% in 14 months	100%	100%	100%	57%	75%	100%	100%	89%	100%	90%	100%	100%	100%
<b>Parentage - MRJC</b>													
90% in 8 months	44%	47%	36%	48%	59%	57%	47%	73%	39%	54%	50%	38%	56%
98% in 10 months	87%	67%	46%	67%	68%	71%	65%	91%	57%	77%	67%	56%	63%
100% in 14 months	91%	93%	64%	81%	77%	86%	71%	91%	78%	85%	83%	63%	69%

Age of resolved cases – the time between filing and resolution, minus any suspense time if applicable.

Court adopted time guideline (based on suggestion from BJA State Advisory Committee, see LCR 4 official comment): (a) Civil - 90% by 360 days (12 months), 98% by 540 days (18 months); (b) Domestic - 90% by 240 days (8 months), 98% by 300 days (10 months); (c) Probate/Guardianship - 90% by 240 days (8 months), 98% by 540 days (18 months); (d) Adoption/Parentage - 90% by 240 days (8 months); 98% by 300 days (10 months).

“Civil” includes all civil actions (including RALJ), except “Matters Filed with Clerk” (Petition for Order Granting Judgment on Confession of Judgment, Tax Warrants, Abstract of Judgment, Foreign Judgment, and Transcript of Judgment), Domestic, Probate, Guardianship, Adoption, and Parentage cases.

Table 4. Pending Caseload at the End of the Month

SEA	Jan	Feb	Mar	Apr	May	Jun	Jul	Aug	Sep	Oct	Nov	Dec
<b>TOTAL - SEA</b>												
2020	8611	8550	8504	8879	8853	8873	8735	9036	8999	8996	9053	8845
2021	8759	8876	8860	8916	8968	8976	8503	8747	8775	8312	8379	
<b>Civil - SEA</b>												
2020	5165	5043	5033	5217	5218	5189	5043	5191	5128	5131	5153	5074
2021	4932	5028	4993	5019	5028	4991	4650	4686	4652	4308	4297	
<b>Domestic - SEA</b>												
2020	2580	2596	2571	2694	2647	2669	2657	2789	2816	2778	2755	2612
2021	2584	2590	2583	2581	2612	2634	2518	2674	2695	2579	2642	
<b>Probate - SEA</b>												
2020	485	513	515	566	572	582	622	623	620	639	678	700
2021	742	747	782	807	832	839	837	876	863	854	868	
<b>Guardianship - SEA</b>												
2020	157	162	146	143	158	163	162	172	175	191	196	184
2021	210	231	221	230	226	236	231	238	285	296	291	
<b>Adoption - SEA</b>												
2020	140	152	151	164	158	165	152	161	172	180	193	182
2021	193	187	185	185	183	189	179	184	185	187	190	
<b>Parentage - SEA</b>												
2020	84	84	88	95	100	105	99	100	88	77	78	93
2021	98	93	96	94	87	87	88	89	95	88	91	

MRJC	Jan	Feb	Mar	Apr	May	Jun	Jul	Aug	Sep	Oct	Nov	Dec
<b>TOTAL - MRJC</b>												
2020	5116	5168	5161	5283	5232	5230	5158	5348	5317	5332	5312	5240
2021	5273	5340	5426	5422	5423	5480	5048	5142	5065	4829	4971	
<b>Civil - MRJC</b>												
2020	2702	2755	2754	2802	2750	2747	2691	2723	2725	2733	2741	2747
2021	2741	2778	2773	2767	2777	2801	2398	2406	2359	2181	2200	
<b>Domestic - MRJC</b>												
2020	1867	1840	1830	1885	1856	1842	1825	1957	1957	1932	1914	1833
2021	1823	1821	1863	1855	1845	1852	1817	1869	1831	1760	1816	
<b>Probate - MRJC</b>												
2020	236	252	263	287	279	287	294	316	303	321	329	323
2021	355	390	419	429	435	452	467	485	422	421	459	
<b>Guardianship - MRJC</b>												
2020	96	99	94	89	111	122	116	110	106	110	108	106
2021	113	115	130	129	118	114	118	131	206	218	232	
<b>Adoption - MRJC</b>												
2020	64	68	69	67	71	69	69	72	65	66	71	76
2021	78	80	84	86	88	91	84	82	84	85	88	
<b>Parentage - MRJC</b>												
2020	151	154	151	153	165	163	163	170	161	160	149	155
2021	163	156	157	156	160	170	164	169	163	164	176	

SEA/MRJC	Jan	Feb	Mar	Apr	May	Jun	Jul	Aug	Sep	Oct	Nov	Dec
2020	13727	13718	13665	14162	14085	14103	13893	14384	14316	14318	14365	14085
2021	14032	14216	14286	14338	14391	14456	13551	13889	13840	13141	13350	

Pending caseload = cases remain active and unresolved at the end of reporting period, excluding cases on suspense status (in arbitration, appeal).

“Civil” includes all civil actions (including RALJ), except “Matters Filed with Clerk” (Petition for Order Granting Judgment on Confession of Judgment, Tax Warrants, Abstract of Judgment, Foreign Judgment, and Transcript of Judgment), Domestic, Probate, Guardianship, Adoption, and Parentage cases.

Table 5. Age of Pending Cases

SEA	Nov 2020	Dec 2020	Jan 2021	Feb 2021	Mar 2021	Apr 2021	May 2021	Jun 2021	Jul 2021	Aug 2021	Sep 2021	Oct 2021	Nov 2021
<b>Civil – SEA</b>													
Median Age (50 <sup>th</sup> percentile) *	201	200	196	196	195	198	200	199	192	193	191	188	189
<b># of Cases in Age Interval</b>													
0 - 120 days (0 - 4 months)	1840	1757	1702	1720	1725	1775	1789	1733	1635	1677	1653	1532	1504
121 - 240 days (5 - 8 months)	1026	1068	1080	1156	1127	1092	1063	1078	1020	1058	1045	1007	1042
241 - 360 days (9 - 12 months)	981	891	799	741	685	710	731	750	688	670	646	645	647
361 - 540 days (13 - 18 months)	723	746	720	780	762	691	671	633	582	505	490	476	513
541 - 720 days (19 - 24 months)	356	364	361	327	369	411	398	417	403	453	433	292	268
> 720 days (> 24 months)	227	248	270	304	325	340	376	380	322	323	385	356	323
<b>Domestic – SEA</b>													
Median Age (50 <sup>th</sup> percentile) *	140	150	158	158	156	148	144	142	143	142	140	133	139
<b># of Cases in Age Interval</b>													
0 - 120 days (0 - 4 months)	1218	1092	1033	1020	1085	1158	1167	1196	1108	1210	1235	1190	1212
121 - 240 days (5 - 8 months)	612	654	706	737	671	584	569	561	571	634	630	628	631
241 - 360 days (9 - 12 months)	402	371	331	307	334	366	399	393	347	319	330	323	364
361 - 540 days (13 - 18 months)	256	225	244	254	219	191	192	197	188	188	179	175	174
> 540 days (> 18 months)	267	270	270	272	274	282	285	287	304	323	321	263	261
<b>Probate – SEA</b>													
Median Age (50 <sup>th</sup> percentile) *	289	270	256	279	271	271	281	296	314	310	340	362	371
<b># of Cases in Age Interval</b>													
0 - 120 days (0 - 4 months)	228	229	256	229	251	256	256	251	232	244	224	226	230
121 - 240 days (5 - 8 months)	91	102	101	120	119	120	132	124	123	127	117	101	105
241 - 360 days (9 - 12 months)	54	64	67	73	78	85	79	93	98	99	103	98	88
361 - 540 days (13 - 18 months)	71	64	71	66	65	73	82	85	85	99	98	98	99
> 540 days (> 18 months)	234	241	247	259	269	273	283	286	299	307	321	331	346
<b>Guardianship – SEA</b>													
Median Age (50 <sup>th</sup> percentile) *	134	191	173	144	181	183	214	197	243	241	172	181	223
<b># of Cases in Age Interval</b>													
0 - 120 days (0 - 4 months)	94	75	92	111	96	101	92	89	81	86	119	132	111
121 - 240 days (5 - 8 months)	30	31	35	31	30	26	27	35	34	33	44	34	45
241 - 360 days (9 - 12 months)	17	24	24	26	27	29	28	26	23	22	22	28	30
361 - 540 days (13 - 18 months)	6	4	9	12	16	22	28	35	36	36	37	33	28
> 540 days (> 18 months)	49	50	50	51	52	52	51	51	57	61	63	69	77
<b>Adoption – SEA</b>													
Median Age (50 <sup>th</sup> percentile) *	197	272	223	251	265	256	298	283	356	347	359	381	398
<b># of Cases in Age Interval</b>													
0 - 120 days (0 - 4 months)	84	73	78	70	63	61	57	58	47	46	46	41	40
121 - 240 days (5 - 8 months)	15	16	21	23	28	31	28	28	24	28	27	25	27
241 - 360 days (9 - 12 months)	19	16	12	7	7	9	12	16	20	20	20	24	20
361 - 540 days (13 - 18 months)	15	14	17	20	15	11	12	12	11	9	11	16	22
> 540 days (> 18 months)	60	63	65	67	72	73	74	73	77	81	81	81	81
<b>Parentage – SEA</b>													
Median Age (50 <sup>th</sup> percentile) *	143	106	102	123	133	139	174	155	155	139	121	123	119
<b># of Cases in Age Interval</b>													
0 - 120 days (0 - 4 months)	37	50	54	44	45	44	35	40	40	41	47	43	46
121 - 240 days (5 - 8 months)	15	16	17	22	26	22	23	14	11	17	18	21	22
241 - 360 days (9 - 12 months)	10	12	10	7	6	10	9	15	16	8	11	7	5
361 - 540 days (13 - 18 months)	7	6	8	10	8	8	9	7	6	9	6	9	8
> 540 days (> 18 months)	9	9	9	10	11	10	11	11	15	14	13	8	10

\*Age of active pending cases is time elapsed from filing date to the end of the reporting period, minus any suspense time (in appeal, stay, mediation, arbitration) if applicable. The “median age” indicates the age of half (50%) of the pending cases (half are more, half are less) than the number of days indicated in the table.

“Civil” includes all civil actions (including RALJ), except “Matters Filed with Clerk” (Petition for Order Granting Judgment on Confession of Judgment, Tax Warrants, Abstract of Judgment, Foreign Judgment, and Transcript of Judgment), Domestic, Probate, Guardianship, Adoption, and Paternity cases.



Table 5. Age of Pending Cases (cont.)

MRJC	Nov 2020	Dec 2020	Jan 2021	Feb 2021	Mar 2021	Apr 2021	May 2021	Jun 2021	Jul 2021	Aug 2021	Sep 2021	Oct 2021	Nov 2021
<b>Civil - MRJC</b>													
Median Age (50 <sup>th</sup> percentile) *	208	203	206	208	205	206	215	223	199	196	200	189	193
<b># of Cases in Age Interval</b>													
0 - 120 days (0 - 4 months)	938	953	972	959	1001	972	951	904	824	858	836	796	790
121 - 240 days (5 - 8 months)	531	569	555	583	521	527	542	557	533	525	480	467	464
241 - 360 days (9 - 12 months)	581	518	461	417	346	380	363	376	264	296	316	304	326
361 - 540 days (13 - 18 months)	330	315	343	407	481	434	437	442	344	231	200	190	184
541 - 720 days (19 - 24 months)	232	234	229	217	191	194	202	211	200	254	267	202	218
> 720 days (> 24 months)	129	158	181	195	233	260	282	311	233	242	260	222	218
<b>Domestic- MRJC</b>													
Median Age (50 <sup>th</sup> percentile) *	153	162	166	165	167	165	153	154	153	161	161	163	163
<b># of Cases in Age Interval</b>													
0 - 120 days (0 - 4 months)	792	725	688	685	759	781	796	772	753	753	749	725	701
121 - 240 days (5 - 8 months)	392	437	488	485	439	416	390	395	423	462	448	441	485
241 - 360 days (9 - 12 months)	291	229	186	196	215	243	262	272	236	232	220	217	267
361 - 540 days (13 - 18 months)	208	206	212	199	188	150	135	139	124	140	133	122	119
> 540 days (> 18 months)	231	236	249	256	262	265	262	274	281	282	281	181	244
<b>Probate - MRJC</b>													
Median Age (50 <sup>th</sup> percentile) *	299	325	283	237	225	220	231	225	234	233	327	336	314
<b># of Cases in Age Interval</b>													
0 - 120 days (0 - 4 months)	111	93	125	146	159	162	162	163	155	156	113	123	148
121 - 240 days (5 - 8 months)	36	44	42	50	61	59	59	68	82	90	67	47	44
241 - 360 days (9 - 12 months)	40	33	32	30	29	36	36	41	42	41	43	50	54
361 - 540 days (13 - 18 months)	33	43	45	47	47	42	42	38	41	42	40	42	47
> 540 days (> 18 months)	109	110	111	117	123	130	136	142	147	156	159	76	166
<b>Guardianship - MRJC</b>													
Median Age (50 <sup>th</sup> percentile) *	197	228	223	200	141	169	211	243	266	260	146	139	153
<b># of Cases in Age Interval</b>													
0 - 120 days (0 - 4 months)	43	41	52	53	62	54	45	37	37	49	94	95	104
121 - 240 days (5 - 8 months)	18	14	5	6	12	18	17	18	18	13	41	45	43
241 - 360 days (9 - 12 months)	21	24	24	18	13	10	3	6	10	16	18	22	26
361 - 540 days (13 - 18 months)	4	4	8	13	18	22	27	27	24	15	12	12	9
> 540 days (> 18 months)	22	23	24	25	25	25	26	26	29	38	41	33	50
<b>Adoption - MRJC</b>													
Median Age (50 <sup>th</sup> percentile) *	497	488	509	495	490	488	487	492	548	611	609	633	651
<b># of Cases in Age Interval</b>													
0 - 120 days (0 - 4 months)	13	16	19	23	23	19	18	17	12	8	10	12	17
121 - 240 days (5 - 8 months)	4	5	4	4	8	13	16	19	14	13	10	6	4
241 - 360 days (9 - 12 months)	8	9	7	5	3	3	3	4	7	11	14	14	10
361 - 540 days (13 - 18 months)	12	12	12	11	12	10	8	9	8	4	2	4	8
> 540 days (> 18 months)	34	34	36	37	38	41	43	42	43	46	48	14	49
<b>Parentage - MRJC</b>													
Median Age (50 <sup>th</sup> percentile) *	155	158	150	147	149	138	137	150	146	159	154	143	160
<b># of Cases in Age Interval</b>													
0 - 120 days (0 - 4 months)	63	58	63	66	72	74	66	68	68	66	68	65	68
121 - 240 days (5 - 8 months)	28	41	52	47	44	41	47	53	53	55	47	52	51
241 - 360 days (9 - 12 months)	27	22	18	14	12	16	24	24	20	23	25	30	36
361 - 540 days (13 - 18 months)	24	26	24	23	21	16	13	14	11	10	11	11	15
> 540 days (> 18 months)	7	8	6	6	8	9	10	11	12	15	12	17	6

\*Age of active pending cases is time elapsed from filing date to the end of the reporting period, minus any suspense time (in appeal, stay, mediation, arbitration) if applicable. The "median age" indicates the age of half (50%) of the pending cases (half are more, half are less) than the number of days indicated in the table.

"Civil" includes all civil actions (including RALJ), except "Matters Filed with Clerk" (Petition for Order Granting Judgment on Confession of Judgment, Tax Warrants, Abstract of Judgment, Foreign Judgment, and Transcript of Judgment), Domestic, Probate, Guardianship, Adoption, and Parentage cases.

Table 6. SEA/MRJC Filings, Resolutions, and Pending Caseload as a Percentage of All Cases

	Nov 2020	Dec 2020	Jan 2021	Feb 2021	Mar 2021	Apr 2021	May 2021	Jun 2021	Jul 2021	Aug 2021	Sep 2021	Oct 2021	Nov 2021
<b>Total Filings</b>													
SEA - # of Cases Filed	1495	1515	1473	1490	1734	1626	1467	1638	1501	1592	1632	1422	1418
MRJC - # of Cases Filed	731	850	875	893	1072	924	855	907	959	901	948	919	862
SEA %	67%	64%	63%	63%	62%	64%	63%	64%	61%	64%	63%	61%	62%
MRJC %	33%	36%	37%	37%	38%	36%	37%	36%	39%	36%	37%	39%	38%
<b>Total Resolutions</b>													
SEA - # of Cases Resolved	1429	1722	1467	1436	1729	1504	1418	1682	1738	1504	1496	1515	1524
MRJC - # of Cases Resolved	762	944	760	868	957	923	819	918	1275	881	923	976	876
SEA %	65%	65%	66%	62%	64%	62%	63%	65%	58%	63%	62%	61%	63%
MRJC %	35%	35%	34%	38%	36%	38%	37%	35%	42%	37%	38%	39%	37%
<b>Total Pending Cases</b>													
SEA - # of Cases Pending	9053	8845	8759	8876	8860	8916	8968	8976	8503	8747	8775	8312	8379
MRJC - # of Cases Pending	5312	5240	5273	5340	5426	5422	5423	5480	5048	5142	5065	4829	4971
SEA %	63%	63%	62%	62%	62%	62%	62%	62%	63%	63%	63%	63%	63%
MRJC %	37%	37%	38%	38%	38%	38%	38%	38%	37%	37%	37%	37%	37%

All civil actions (including RALJ), except "Matters Filed with Clerk" (Petition for Order Granting Judgment on Confession of Judgment, Tax Warrants, Abstract of Judgment, Foreign Judgment, and Transcript of Judgment), Domestic, Probate, Guardianship, Adoption, and Parentage cases.

## Appendix Glossary and Definition

### **Active Status**

A case is active if it is not on suspense status (see Suspense Status).

### **Adoption and Parentage Cases (case type 5)**

ADP - Adoption  
CFI - Confidential Intermediary  
CHN - Confidential Change of Name  
DIP - Disestablishment of Parentage  
MDS - Modification/Support Only  
MOD - Modification  
MSC - Miscellaneous  
OAA - Open Adoption Agreement  
PAD - De Facto Parentage  
PAG - Pre Birth Establish Parentage Genetic  
PAS - Establish Parentage Gestational Surrogacy  
PAT - Parentage  
PPR - Initial Pre Placement Report  
PRC - Parentage Rescission/Challenge  
PUR - Parentage (URES/UFSA)  
REL - Relinquishment  
ROB - Relocation Objection  
TER - Termination of Parental Rights

### **Case**

A case is defined as a filing with an assigned case number.

### **Civil Cases (case type 2, no RALJ)**

ALR - Administrative Law Review  
ALRLI - L&I Administrative Law Review  
AOD - Assurance of Discontinuance  
ASB - Asbestos  
ASP - Asbestos Personal Injury  
ASW - Asbestos Wrongful Death  
BAT - Petition to Appeal/Amend Ballot Title  
CAA - Motion to Confirm/Compel Arbitration Award  
CFJ - Petition for Order Granting Judgment on Confession of Judgment  
CHN - Non Confidential Change of Name  
COL - Collection  
COM - Commercial  
CON - Condemnation  
CRP - Certificate of Restoration of Opportunity  
CRR - Petition for Certificate of Rehabilitation  
DOL - Appeal Licensing Revocation  
DSF - Notice of Deposit of Surplus Funds from Trustee's Sale of Real Property  
DVP - Domestic Violence  
ECP - Enforcement of Canadian Protection Order  
EOM - Emancipation of Minor  
FOR - Foreclosure  
FPO - Foreign Protection Order  
FVL - Motion to Show Cause /Fruivolous Lien  
HAR - Unlawful Harassment  
HSI - Application for Health & Safety Inspection  
INJ - Injunction  
IPL - Complaint for Interpleader  
LUP - Land Use Petition  
MAL - Other Malpractice  
MED - Medical Malpractice  
MER - Meretricious Relationships  
MHA - Malicious Harassment  
MSC - Miscellaneous  
MST - Minor Settlement  
MWP - Minor Work Permit  
NJF - Non Judicial Filing  
OSS - Petition to Issue Out of State Subpoena  
PBC - Petition for Birth Certificate Change  
PBJ - Petition for Justification /Bail Bond Company  
PCC - Petition for Civil Commitment  
PFA - Property Fairness Act  
PIN - Personal Injury  
PPT - Petition for Perpetuation of Testimony  
PRA - Public Records Act

PRG - Property Damage /Gangs  
PRP - Property Damage  
PVO - Petition for Vehicle Ownership  
QTI - Quiet Title  
RCV - Petition to Appoint Receiver  
RDR - Relief from Duty to Register  
RFR - Restoration of Firearms Rights  
RRC - Remove Restricted Covenant  
SCA - Small Claims Appeal  
SDR - School District /Required Action Plan  
SER - Subdivision Election Process Law Review  
SPC - Seizure of Property From Commission of a Crime  
SPR - Seizure of Property Resulting From a Crime  
STK - Stalking Protection  
SXP - Sexual Assault Protection  
TMV - Tort /Motor Vehicle  
TSS - Petition for Approval of Transfer of Structured Settlement  
TTO - Tort /Other  
UND - Unlawful Detainer  
VAP - Vulnerable Adult Protection Order  
VEP - Voter Election Process Law Review  
VVT - Victims of Motor Vehicle Theft /Civil Action  
WDE - Wrongful Death  
WHC - Writ of Habeas Corpus  
WMW - Miscellaneous Writs  
WRM - Writ of Mandamus  
WRR - Writ of Restitution  
WRV - Writ of Review  
XRP - Extreme Risk Protection Order

### **Completion**

A case is completed if dispositive document is filed with the court following resolution.

### **Domestic Cases (case type 3)**

CIR - Committed Intimate Relationship  
CUS - Child Custody  
DIC - Dissolution w/ Children  
DIN - Dissolution no Children  
DIS - Dissolution  
DPC - Dissolution of Domestic Partnership w/ Children  
DPN - Dissolution of Domestic Partnership /No Children  
FIU - Out of State Support Registration /Foreign Judgment  
INC - Annulment /Inv of Marriage w/ Children  
IND - Annulment /Inv of Domestic Partnership w/ Children  
INP - Invalidity, Domestic Partnership  
INV - Annulment /Invalidity  
MDS - Modification/Support Only  
MOD - Modification  
MSC - Miscellaneous  
MWA - Mandatory Wage Assignment  
OSC - Out of State Custody  
PPS - Parenting Plan / Child Support  
PSO - Petition for Entry of KC Support Order  
RCV - Relative Child Visitation  
RIC - Reciprocal, Resp in County  
ROB - Relocation /Objection  
ROC - Reciprocal, Resp out of County  
RVC - Relative Child Visits  
SDC - Legal Separation, Domestic Partnership w/ Children  
SEC - Legal Separation w/ Children  
SEP - Legal Separation  
SPD - Legal Separation, Domestic Partnership /No Children  
TSS - Structured Settlement  
EFC - Extended Foster Care, Dependency  
GFC - Guardianship Foster Children  
RPR - Reinstatement of Parental Rights  
RVS - Relative Visitation  
TRU - Truancy  
VYG - Vulnerable Youth Guardianship

### ***Probate and Guardianship Cases (case type 4)***

ABS - Absentee  
AOS - Affidavit of Successor  
ASE - Affidavit of Small Estate  
DSC - Disclaimer  
EST - Estate  
FNW - Foreign Will  
G/E - Guardianship/Estate  
GDE - Guardianship of the Estate  
GDN - Guardianship  
GDP - Guardianship of the Person  
LGD - Limited Guardianship  
LGE - Limited Guardianship of the Estate  
LGP - Limited Guardianship of the Person  
MGD - Minor Guardianship  
MSC - Miscellaneous  
MST - Minor Settlement  
NJB - Non Judicial Binding/TEDRA Agreement  
NNC - Non Probate Notice to Creditor  
POA - Petition for Relief (RCW 11.94) /Power of Attorney  
RGR - Registration of Guardianship  
RTR - Registration of Trust /Trust Situs  
SNT - Special Needs Trust  
TDR - Trust/Estate Dispute Resolution  
TRS - Trust  
WLL - Will Only

### ***Resolution***

A case is resolved if all issues in the complaint are fully adjudicated.

### ***Suspended Case***

A case is placed in suspense status from active status during the reporting period.

### ***Suspense Status***

A case is on suspense status if it is on warrant, appeal, stay, mediation, arbitration ("Deferred Prosecution" is not a suspense status, but is treated as a resolution).