



King County

Department of Judicial Administration

Catherine Cornwall

Director and Superior Court Clerk

(206) 296-9300 (206) 296-0100 TTY/TDD

King County Superior Court

Civil Department Statistical Report

October 2024

Department of Judicial Administration

Prepared by: Shiquan Liao, Ph.D., Statistician

November 15, 2024

Report #: CIVIL-2024-10

Seattle Courthouse
516 Third Avenue Room E609
Seattle, WA 98104-2386

Maleng Regional Justice Center
401 Fourth Avenue North Room 2C
Kent, WA 98032-4429

*Clark Children and Family
Justice Center*
1211 East Alder Room 3015
Seattle, WA 98122-5598

Civil Statistics Summary

The civil statistics report provides an overview of the caseload for the Civil and UFC Departments. The report includes the number of filings, number of resolutions, number of pending cases, age of resolved cases, and age of pending cases for both the SEA and MRJC locations.

The following categories are included in this report: **Civil, Domestic, Probate, Guardianship, Adoption, and Parentage.** This report includes all cases in these categories, regardless of whether a judge is assigned at filing or not.

Please note that the category of “civil” in the tables of this report is more narrowly defined. Readers are encouraged to check the Appendix at the end of this report for precise definition of the terminology used in this report.

- **Filings (Table 1, Figures 1)**

In October 2024, the total number of filings was 3,812 cases. Of those cases filed in the month, 40% were MRJC cases, and the remaining 60% were SEA cases. The year-to-date average filings were 3,457 cases per month. In comparison, the average monthly filings in 2019, 2020, 2021, 2022 and 2023 were 3,083, 2,436, 2,429, 2,601, and 2,953 cases respectively.

- **Resolutions (Table 2, Figures 2)**

The total resolutions in October 2024 were 3,596 cases. Of those cases resolved in the month, 41% of the resolutions were MRJC cases. In 2024, the average monthly resolutions were 3,197 cases, a lower volume than the filings. In comparison, the average monthly resolutions in 2019, 2020, 2021, 2022 and 2023 were 3,091, 2,378, 2,450, 2,592, and 2,756 cases, respectively.

- **The Age of Resolved Cases (Table 3)**

Table 3 shows the comparison between the court-adopted timeline standard (as suggested by the State Advisory Committee) with the actual age of resolved cases (time from filing to resolution).

- **Pending Caseload (Table 4, Figures 3) and Age of Pending Cases (Table 5)**

At the end of October 2024, the pending caseload for the civil department was 17,094 cases, 62% being SEA cases and 38% being MRJC cases. The pending caseload is seeing a significant increase, particularly in general civil cases (case type 2) recently. The age breakdown of pending cases is presented in Table 5. SEA had 137 civil cases over 24 months and 237 domestic cases over 18 months. MRJC had 47 general civil cases over 24 months and 203 domestic cases over 18 months.

Conclusions: Filings in recent months have gradually increased from the low volume during the COVID-19. In 2024, the average monthly filings were 3,457 cases. In the same period, the court resolved 3,197 cases per month on average. At the end of October 2024, the total pending caseload in the reporting categories was 17,094 cases, the largest pending caseload since 2010. Particularly, there has been an increasing trend in pending civil and probate caseload. In comparison, the pending caseload in the same reporting categories was 15,059, 14,371, 14,085, 12,941, 13,471, and 15,082 at the year end of 2018, 2019, 2020, 2021, 2022 and 2023 respectively.

Figure 1. Monthly Filings for SEA, MRJC and SEA/MRJC Combined

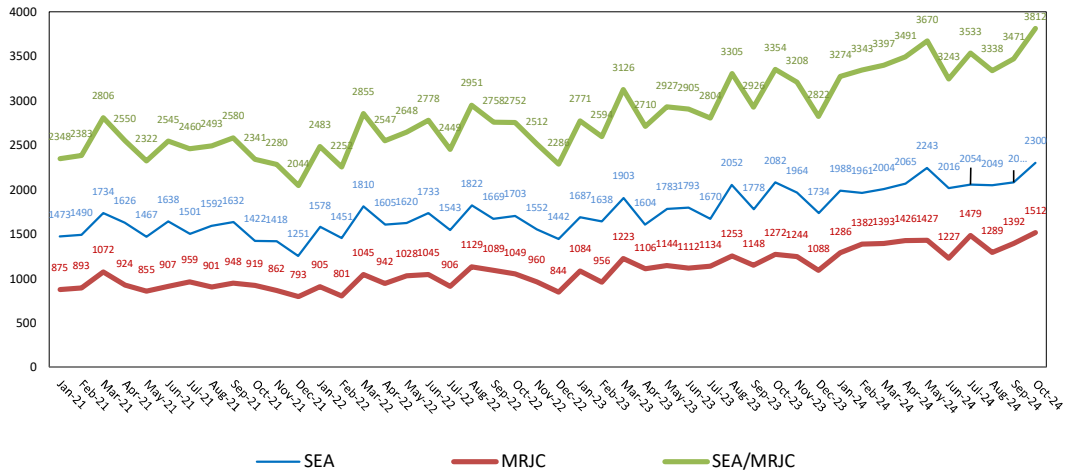


Figure 2. Monthly Resolutions for SEA, MRJC and SEA/MRJC Combined

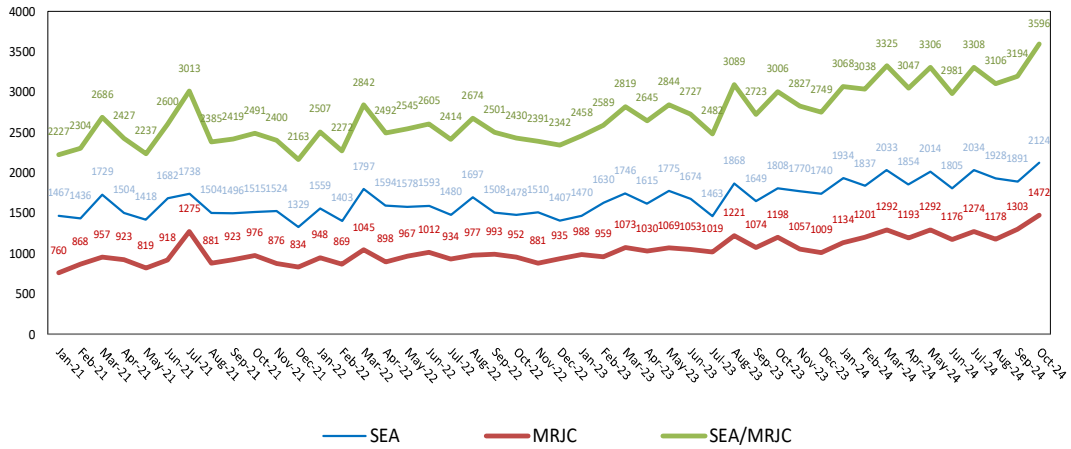


Figure 3. Monthly Pending Caseload for SEA, MRJC and SEA/MRJC Combined

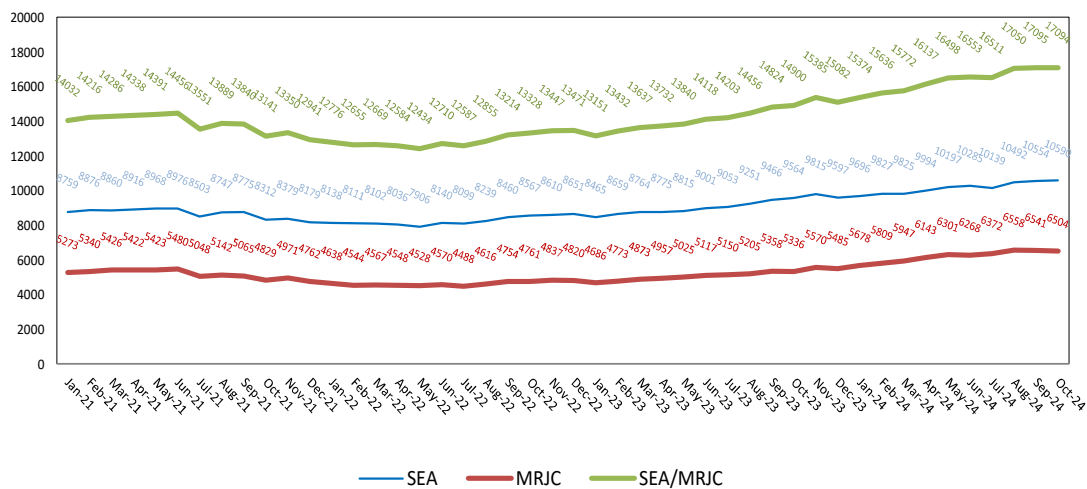


Table 1. Monthly New Filings

| SEA | Jan | Feb | Mar | Apr | May | Jun | Jul | Aug | Sep | Oct | Nov | Dec |
|---------------------------|------|------|------|------|------|------|------|------|------|------|------|------|
| TOTAL - SEA | | | | | | | | | | | | |
| 2022 | 1578 | 1451 | 1810 | 1605 | 1620 | 1733 | 1543 | 1822 | 1669 | 1703 | 1552 | 1442 |
| 2023 | 1687 | 1638 | 1903 | 1604 | 1783 | 1793 | 1670 | 2052 | 1778 | 2082 | 1964 | 1734 |
| 2024 | 1988 | 1961 | 2004 | 2065 | 2243 | 2016 | 2054 | 2049 | 2079 | 2300 | | |
| Civil - SEA | | | | | | | | | | | | |
| 2022 | 749 | 624 | 804 | 734 | 798 | 861 | 783 | 878 | 781 | 868 | 783 | 686 |
| 2023 | 749 | 765 | 918 | 817 | 897 | 932 | 942 | 1138 | 948 | 1211 | 1124 | 1029 |
| 2024 | 1053 | 1068 | 1057 | 1181 | 1284 | 1228 | 1186 | 1187 | 1244 | 1391 | | |
| Domestic - SEA | | | | | | | | | | | | |
| 2022 | 298 | 275 | 326 | 333 | 314 | 343 | 286 | 348 | 327 | 296 | 275 | 262 |
| 2023 | 322 | 341 | 377 | 273 | 325 | 325 | 292 | 385 | 373 | 315 | 332 | 251 |
| 2024 | 335 | 326 | 355 | 369 | 368 | 335 | 339 | 360 | 367 | 346 | | |
| Probate - SEA | | | | | | | | | | | | |
| 2022 | 489 | 507 | 612 | 473 | 433 | 466 | 387 | 507 | 480 | 445 | 413 | 428 |
| 2023 | 520 | 467 | 516 | 439 | 483 | 451 | 367 | 445 | 383 | 468 | 453 | 387 |
| 2024 | 524 | 479 | 497 | 444 | 500 | 380 | 458 | 427 | 401 | 475 | | |
| Guardianship - SEA | | | | | | | | | | | | |
| 2022 | 14 | 11 | 12 | 36 | 51 | 38 | 45 | 52 | 44 | 49 | 43 | 33 |
| 2023 | 60 | 33 | 52 | 53 | 44 | 44 | 39 | 57 | 52 | 46 | 47 | 37 |
| 2024 | 46 | 46 | 56 | 40 | 51 | 43 | 37 | 41 | 39 | 57 | | |
| Adoption - SEA | | | | | | | | | | | | |
| 2022 | 16 | 25 | 39 | 17 | 15 | 18 | 27 | 24 | 22 | 33 | 22 | 16 |
| 2023 | 25 | 26 | 24 | 20 | 20 | 19 | 18 | 22 | 9 | 25 | 21 | 10 |
| 2024 | 16 | 27 | 25 | 12 | 20 | 13 | 24 | 14 | 16 | 17 | | |
| Parentage - SEA | | | | | | | | | | | | |
| 2022 | 12 | 9 | 17 | 12 | 9 | 7 | 15 | 13 | 15 | 11 | 16 | 17 |
| 2023 | 11 | 6 | 16 | 2 | 14 | 22 | 12 | 5 | 13 | 17 | 12 | 20 |
| 2024 | 14 | 15 | 14 | 19 | 20 | 17 | 10 | 20 | 12 | 14 | | |

| MRJC | Jan | Feb | Mar | Apr | May | Jun | Jul | Aug | Sep | Oct | Nov | Dec |
|----------------------------|------|------|------|------|------|------|------|------|------|------|------|------|
| TOTAL - MRJC | | | | | | | | | | | | |
| 2022 | 905 | 801 | 1045 | 942 | 1028 | 1045 | 906 | 1129 | 1089 | 1049 | 960 | 844 |
| 2023 | 1084 | 956 | 1223 | 1106 | 1144 | 1112 | 1134 | 1253 | 1148 | 1272 | 1244 | 1088 |
| 2024 | 1286 | 1382 | 1393 | 1426 | 1427 | 1227 | 1479 | 1289 | 1392 | 1512 | | |
| Civil - MRJC | | | | | | | | | | | | |
| 2022 | 493 | 399 | 567 | 523 | 560 | 603 | 517 | 631 | 594 | 600 | 541 | 473 |
| 2023 | 585 | 552 | 691 | 614 | 662 | 669 | 699 | 810 | 746 | 793 | 695 | 729 |
| 2024 | 826 | 908 | 877 | 901 | 947 | 817 | 991 | 814 | 929 | 1024 | | |
| Domestic - MRJC | | | | | | | | | | | | |
| 2022 | 179 | 165 | 223 | 199 | 214 | 182 | 167 | 237 | 235 | 195 | 176 | 147 |
| 2023 | 213 | 187 | 249 | 229 | 221 | 209 | 216 | 203 | 177 | 213 | 209 | 166 |
| 2024 | 205 | 172 | 229 | 248 | 206 | 187 | 237 | 203 | 224 | 230 | | |
| Probate - MRJC | | | | | | | | | | | | |
| 2022 | 192 | 201 | 215 | 174 | 182 | 197 | 166 | 185 | 205 | 177 | 191 | 170 |
| 2023 | 221 | 170 | 206 | 206 | 196 | 166 | 160 | 188 | 154 | 199 | 186 | 149 |
| 2024 | 203 | 243 | 214 | 230 | 198 | 176 | 185 | 188 | 190 | 197 | | |
| Guardianship - MRJC | | | | | | | | | | | | |
| 2022 | 15 | 15 | 18 | 29 | 47 | 41 | 33 | 51 | 23 | 45 | 35 | 33 |
| 2023 | 38 | 38 | 58 | 36 | 39 | 40 | 34 | 33 | 48 | 45 | 40 | 29 |
| 2024 | 42 | 47 | 47 | 30 | 39 | 30 | 49 | 49 | 35 | 41 | | |
| Adoption - MRJC | | | | | | | | | | | | |
| 2022 | 4 | 9 | 7 | 7 | 6 | 7 | 7 | 10 | 15 | 9 | 3 | 5 |
| 2023 | 8 | 1 | 5 | 9 | 10 | 10 | 8 | 9 | 3 | 10 | 7 | 1 |
| 2024 | 2 | 2 | 7 | 3 | 7 | 6 | 4 | 8 | 3 | 6 | | |
| Parentage - MRJC | | | | | | | | | | | | |
| 2022 | 22 | 12 | 15 | 10 | 19 | 15 | 16 | 15 | 17 | 23 | 14 | 16 |
| 2023 | 19 | 8 | 14 | 12 | 16 | 18 | 17 | 10 | 20 | 12 | 15 | 14 |
| 2024 | 8 | 10 | 19 | 14 | 30 | 12 | 13 | 27 | 11 | 14 | | |

“Civil” includes all civil actions (including RALJ), except “Matters Filed with Clerk” (Petition for Order Granting Judgment on Confession of Judgment, Tax Warrants, Abstract of Judgment, Foreign Judgment, and Transcript of Judgment), Domestic, Probate, Guardianship, Adoption, and Paternity cases.

Table 2. Monthly Resolutions

| SEA | Jan | Feb | Mar | Apr | May | Jun | Jul | Aug | Sep | Oct | Nov | Dec |
|---------------------------|------|------|------|------|------|------|------|------|------|------|------|------|
| TOTAL - SEA | | | | | | | | | | | | |
| 2022 | 1559 | 1403 | 1797 | 1594 | 1578 | 1593 | 1480 | 1697 | 1508 | 1478 | 1510 | 1407 |
| 2023 | 1470 | 1630 | 1746 | 1615 | 1775 | 1674 | 1463 | 1868 | 1643 | 1808 | 1770 | 1740 |
| 2024 | 1934 | 1837 | 2033 | 1854 | 2014 | 1805 | 2034 | 1928 | 1891 | 2124 | | |
| Civil - SEA | | | | | | | | | | | | |
| 2022 | 734 | 622 | 808 | 733 | 783 | 781 | 744 | 808 | 676 | 716 | 764 | 625 |
| 2023 | 681 | 801 | 842 | 825 | 897 | 853 | 769 | 1039 | 893 | 1000 | 937 | 959 |
| 2024 | 1101 | 1019 | 1106 | 984 | 1074 | 1077 | 1146 | 1125 | 1116 | 1267 | | |
| Domestic - SEA | | | | | | | | | | | | |
| 2022 | 357 | 276 | 387 | 300 | 308 | 296 | 299 | 342 | 298 | 294 | 252 | 318 |
| 2023 | 255 | 283 | 325 | 291 | 350 | 315 | 266 | 322 | 293 | 291 | 340 | 328 |
| 2024 | 305 | 309 | 336 | 372 | 347 | 290 | 355 | 327 | 338 | 355 | | |
| Probate - SEA | | | | | | | | | | | | |
| 2022 | 418 | 438 | 535 | 467 | 404 | 455 | 380 | 479 | 455 | 386 | 420 | 409 |
| 2023 | 454 | 482 | 499 | 435 | 455 | 425 | 366 | 427 | 391 | 433 | 402 | 395 |
| 2024 | 464 | 430 | 510 | 417 | 498 | 371 | 454 | 405 | 370 | 435 | | |
| Guardianship - SEA | | | | | | | | | | | | |
| 2022 | 35 | 37 | 32 | 47 | 38 | 32 | 33 | 42 | 47 | 41 | 37 | 32 |
| 2023 | 43 | 36 | 45 | 32 | 36 | 57 | 36 | 47 | 39 | 49 | 50 | 35 |
| 2024 | 42 | 49 | 48 | 44 | 49 | 41 | 42 | 36 | 38 | 37 | | |
| Adoption - SEA | | | | | | | | | | | | |
| 2022 | 13 | 16 | 29 | 29 | 30 | 22 | 15 | 19 | 18 | 29 | 26 | 16 |
| 2023 | 20 | 15 | 28 | 25 | 22 | 14 | 16 | 26 | 20 | 20 | 25 | 15 |
| 2024 | 15 | 14 | 20 | 24 | 24 | 11 | 19 | 22 | 17 | 15 | | |
| Parentage - SEA | | | | | | | | | | | | |
| 2022 | 12 | 14 | 26 | 18 | 15 | 7 | 9 | 7 | 14 | 12 | 11 | 7 |
| 2023 | 17 | 13 | 7 | 7 | 15 | 10 | 10 | 7 | 13 | 15 | 16 | 8 |
| 2024 | 7 | 16 | 13 | 13 | 22 | 15 | 18 | 13 | 12 | 15 | | |

| MRJC | Jan | Feb | Mar | Apr | May | Jun | Jul | Aug | Sep | Oct | Nov | Dec |
|----------------------------|------|------|------|------|------|------|------|------|------|------|------|------|
| TOTAL - MRJC | | | | | | | | | | | | |
| 2022 | 948 | 869 | 1045 | 898 | 967 | 1012 | 934 | 977 | 993 | 952 | 881 | 935 |
| 2023 | 988 | 959 | 1073 | 1030 | 1069 | 1053 | 1019 | 1221 | 1074 | 1198 | 1057 | 1009 |
| 2024 | 1134 | 1201 | 1292 | 1193 | 1292 | 1176 | 1274 | 1178 | 1303 | 1472 | | |
| Civil - MRJC | | | | | | | | | | | | |
| 2022 | 499 | 442 | 553 | 504 | 487 | 564 | 521 | 544 | 561 | 558 | 470 | 514 |
| 2023 | 501 | 560 | 622 | 589 | 615 | 613 | 624 | 758 | 681 | 768 | 648 | 617 |
| 2024 | 718 | 726 | 871 | 746 | 812 | 753 | 867 | 755 | 881 | 1005 | | |
| Domestic - MRJC | | | | | | | | | | | | |
| 2022 | 222 | 207 | 222 | 177 | 227 | 181 | 197 | 217 | 184 | 173 | 187 | 195 |
| 2023 | 208 | 179 | 202 | 190 | 210 | 208 | 202 | 216 | 189 | 200 | 187 | 188 |
| 2024 | 186 | 198 | 179 | 176 | 198 | 188 | 208 | 177 | 187 | 210 | | |
| Probate - MRJC | | | | | | | | | | | | |
| 2022 | 180 | 160 | 209 | 156 | 185 | 210 | 147 | 165 | 203 | 169 | 167 | 161 |
| 2023 | 214 | 178 | 199 | 186 | 190 | 161 | 143 | 185 | 144 | 178 | 175 | 166 |
| 2024 | 177 | 229 | 192 | 208 | 214 | 188 | 154 | 181 | 187 | 183 | | |
| Guardianship - MRJC | | | | | | | | | | | | |
| 2022 | 24 | 34 | 20 | 34 | 39 | 32 | 47 | 28 | 27 | 33 | 30 | 36 |
| 2023 | 46 | 25 | 31 | 45 | 34 | 44 | 27 | 40 | 32 | 41 | 28 | 30 |
| 2024 | 35 | 29 | 35 | 42 | 46 | 30 | 27 | 34 | 30 | 41 | | |
| Adoption - MRJC | | | | | | | | | | | | |
| 2022 | 5 | 4 | 18 | 4 | 9 | 5 | 7 | 5 | 7 | 7 | 8 | 14 |
| 2023 | 7 | 3 | 2 | 1 | 10 | 17 | 4 | 6 | 12 | 3 | 6 | 4 |
| 2024 | 3 | 4 | 7 | 7 | 2 | 3 | 3 | 7 | 3 | 9 | | |
| Parentage - MRJC | | | | | | | | | | | | |
| 2022 | 18 | 22 | 23 | 23 | 20 | 20 | 15 | 18 | 11 | 12 | 19 | 15 |
| 2023 | 12 | 14 | 17 | 19 | 10 | 10 | 19 | 16 | 16 | 8 | 13 | 4 |
| 2024 | 15 | 15 | 8 | 14 | 19 | 14 | 15 | 24 | 15 | 24 | | |

"Civil" includes all civil actions (including RAL), except "Matters Filed with Clerk" (Petition for Order Granting Judgment on Confession of Judgment, Tax Warrants, Abstract of Judgment, Foreign Judgment, and Transcript of Judgment), Domestic, Probate, Guardianship, Adoption, and Parentage cases.

Table 3. Percentage of Cases Resolved in Specified Time Intervals

| SEA | Oct 2023 | Nov 2023 | Dec 2023 | Jan 2024 | Feb 2024 | Mar 2024 | Apr 2024 | May 2024 | Jun 2024 | Jul 2024 | Aug 2024 | Sep 2024 | Oct 2024 |
|---------------------------|----------|----------|----------|----------|----------|----------|----------|----------|----------|----------|----------|----------|----------|
| Civil - SEA | | | | | | | | | | | | | |
| 90% in 12 months | 94% | 91% | 88% | 83% | 88% | 87% | 89% | 88% | 83% | 89% | 89% | 86% | 87% |
| 98% in 18 months | 99% | 97% | 95% | 91% | 95% | 94% | 95% | 94% | 91% | 96% | 95% | 93% | 94% |
| 100% in 24 months | 99% | 99% | 98% | 95% | 98% | 97% | 98% | 96% | 93% | 99% | 98% | 96% | 97% |
| Domestic - SEA | | | | | | | | | | | | | |
| 90% in 8 months | 61% | 56% | 60% | 56% | 61% | 55% | 59% | 57% | 60% | 60% | 55% | 61% | 56% |
| 98% in 10 months | 67% | 63% | 70% | 64% | 68% | 66% | 69% | 68% | 74% | 69% | 65% | 67% | 67% |
| 100% in 14 months | 85% | 82% | 86% | 84% | 85% | 88% | 87% | 82% | 89% | 87% | 84% | 86% | 83% |
| Probate - SEA | | | | | | | | | | | | | |
| 90% in 8 months | 99% | 100% | 98% | 99% | 99% | 98% | 97% | 99% | 98% | 98% | 99% | 99% | 99% |
| 98% in 18 months | 100% | 100% | 99% | 100% | 100% | 100% | 99% | 99% | 100% | 100% | 100% | 100% | 100% |
| 100% in 36 months | 100% | 100% | 100% | 100% | 100% | 100% | 100% | 100% | 100% | 100% | 100% | 100% | 100% |
| Guardianship - SEA | | | | | | | | | | | | | |
| 90% in 8 months | 98% | 94% | 89% | 93% | 100% | 94% | 96% | 92% | 98% | 95% | 97% | 100% | 100% |
| 98% in 18 months | 100% | 100% | 97% | 100% | 100% | 100% | 98% | 96% | 100% | 100% | 97% | 100% | 100% |
| 100% in 36 months | 100% | 100% | 100% | 100% | 100% | 100% | 100% | 100% | 100% | 100% | 97% | 100% | 100% |
| Adoption - SEA | | | | | | | | | | | | | |
| 90% in 8 months | 90% | 100% | 100% | 67% | 64% | 100% | 88% | 96% | 100% | 90% | 91% | 82% | 93% |
| 98% in 10 months | 90% | 100% | 100% | 67% | 71% | 100% | 88% | 100% | 100% | 95% | 91% | 82% | 93% |
| 100% in 14 months | 90% | 100% | 100% | 67% | 71% | 100% | 96% | 100% | 100% | 100% | 91% | 82% | 93% |
| Parentage - SEA | | | | | | | | | | | | | |
| 90% in 8 months | 87% | 69% | 75% | 86% | 56% | 77% | 62% | 73% | 73% | 72% | 54% | 92% | 80% |
| 98% in 10 months | 87% | 81% | 88% | 86% | 75% | 85% | 69% | 77% | 73% | 94% | 77% | 92% | 87% |
| 100% in 14 months | 100% | 94% | 88% | 86% | 94% | 92% | 92% | 77% | 87% | 100% | 77% | 92% | 93% |

| MRJC | Oct 2023 | Nov 2023 | Dec 2023 | Jan 2024 | Feb 2024 | Mar 2024 | Apr 2024 | May 2024 | Jun 2024 | Jul 2024 | Aug 2024 | Sep 2024 | Oct 2024 |
|----------------------------|----------|----------|----------|----------|----------|----------|----------|----------|----------|----------|----------|----------|----------|
| Civil - MRJC | | | | | | | | | | | | | |
| 90% in 12 months | 94% | 94% | 91% | 89% | 94% | 90% | 93% | 89% | 82% | 95% | 93% | 93% | 93% |
| 98% in 18 months | 99% | 97% | 96% | 92% | 98% | 95% | 96% | 93% | 86% | 98% | 98% | 96% | 98% |
| 100% in 24 months | 99% | 99% | 97% | 96% | 99% | 96% | 99% | 93% | 88% | 99% | 99% | 98% | 99% |
| Domestic - MRJC | | | | | | | | | | | | | |
| 90% in 8 months | 54% | 55% | 49% | 66% | 58% | 51% | 62% | 47% | 55% | 60% | 50% | 52% | 49% |
| 98% in 10 months | 64% | 72% | 65% | 74% | 65% | 61% | 70% | 61% | 62% | 67% | 59% | 58% | 58% |
| 100% in 14 months | 86% | 87% | 86% | 90% | 84% | 83% | 92% | 87% | 83% | 86% | 81% | 75% | 82% |
| Probate - MRJC | | | | | | | | | | | | | |
| 90% in 8 months | 99% | 99% | 98% | 100% | 99% | 98% | 99% | 97% | 98% | 99% | 98% | 99% | 98% |
| 98% in 18 months | 100% | 100% | 100% | 100% | 100% | 100% | 100% | 100% | 100% | 100% | 100% | 100% | 99% |
| 100% in 36 months | 100% | 100% | 100% | 100% | 100% | 100% | 100% | 100% | 100% | 100% | 100% | 100% | 100% |
| Guardianship - MRJC | | | | | | | | | | | | | |
| 90% in 8 months | 95% | 100% | 93% | 97% | 90% | 91% | 93% | 94% | 90% | 93% | 91% | 93% | 85% |
| 98% in 18 months | 100% | 100% | 97% | 100% | 100% | 97% | 100% | 100% | 100% | 96% | 100% | 100% | 95% |
| 100% in 36 months | 100% | 100% | 100% | 100% | 100% | 100% | 100% | 100% | 100% | 100% | 100% | 100% | 100% |
| Adoption - MRJC | | | | | | | | | | | | | |
| 90% in 8 months | 67% | 100% | 75% | 67% | 25% | 86% | 71% | 50% | 100% | 100% | 100% | 100% | 67% |
| 98% in 10 months | 67% | 100% | 75% | 100% | 75% | 86% | 71% | 50% | 100% | 100% | 100% | 100% | 78% |
| 100% in 14 months | 100% | 100% | 75% | 100% | 75% | 86% | 71% | 50% | 100% | 100% | 100% | 100% | 78% |
| Parentage - MRJC | | | | | | | | | | | | | |
| 90% in 8 months | 50% | 46% | 0% | 27% | 47% | 25% | 64% | 37% | 64% | 27% | 21% | 47% | 50% |
| 98% in 10 months | 88% | 54% | 0% | 60% | 67% | 63% | 71% | 53% | 71% | 60% | 58% | 60% | 54% |
| 100% in 14 months | 88% | 62% | 100% | 87% | 80% | 63% | 93% | 79% | 93% | 67% | 79% | 87% | 79% |

Age of resolved cases – the time between filing and resolution, minus any suspense time if applicable.

Court adopted time guideline (based on suggestion from BJA State Advisory Committee, see LCR 4 official comment): (a) Civil - 90% by 360 days (12 months), 98% by 540 days (18 months); (b) Domestic - 90% by 240 days (8 months), 98% by 300 days (10 months); (c) Probate/Guardianship - 90% by 240 days (8 months), 98% by 540 days (18 months); (d) Adoption/Parentage - 90% by 240 days (8 months); 98% by 300 days (10 months).

“Civil” includes all civil actions (including RAL), except “Matters Filed with Clerk” (Petition for Order Granting Judgment on Confession of Judgment, Tax Warrants, Abstract of Judgment, Foreign Judgment, and Transcript of Judgment), Domestic, Probate, Guardianship, Adoption, and Parentage cases.

Table 4. Pending Caseload at the End of the Month

| SEA | Jan | Feb | Mar | Apr | May | Jun | Jul | Aug | Sep | Oct | Nov | Dec |
|----------------------------|-------|-------|-------|-------|-------|-------|-------|-------|-------|-------|-------|-------|
| TOTAL - SEA | | | | | | | | | | | | |
| 2022 | 8138 | 8111 | 8102 | 8036 | 7906 | 8140 | 8099 | 8239 | 8460 | 8567 | 8610 | 8651 |
| 2023 | 8465 | 8659 | 8764 | 8775 | 8815 | 9001 | 9053 | 9251 | 9466 | 9564 | 9815 | 9597 |
| 2024 | 9696 | 9827 | 9825 | 9994 | 10197 | 10285 | 10139 | 10492 | 10554 | 10590 | | |
| Civil - SEA | | | | | | | | | | | | |
| 2022 | 4151 | 4209 | 4177 | 4156 | 4086 | 4230 | 4203 | 4290 | 4428 | 4499 | 4522 | 4593 |
| 2023 | 4420 | 4514 | 4531 | 4563 | 4599 | 4734 | 4801 | 4897 | 5019 | 5121 | 5313 | 5244 |
| 2024 | 5234 | 5306 | 5300 | 5457 | 5663 | 5745 | 5645 | 5865 | 5916 | 5942 | | |
| Domestic - SEA | | | | | | | | | | | | |
| 2022 | 2494 | 2483 | 2522 | 2509 | 2478 | 2555 | 2509 | 2531 | 2580 | 2559 | 2588 | 2544 |
| 2023 | 2491 | 2599 | 2663 | 2638 | 2623 | 2638 | 2635 | 2713 | 2816 | 2781 | 2809 | 2676 |
| 2024 | 2739 | 2751 | 2762 | 2785 | 2785 | 2794 | 2762 | 2844 | 2832 | 2794 | | |
| Probate - SEA | | | | | | | | | | | | |
| 2022 | 960 | 934 | 937 | 864 | 862 | 866 | 876 | 895 | 916 | 972 | 958 | 966 |
| 2023 | 1012 | 991 | 1010 | 1004 | 1024 | 1050 | 1040 | 1058 | 1046 | 1081 | 1122 | 1111 |
| 2024 | 1166 | 1205 | 1188 | 1191 | 1190 | 1196 | 1195 | 1226 | 1260 | 1296 | | |
| Guardianship - SEA | | | | | | | | | | | | |
| 2022 | 270 | 225 | 196 | 260 | 266 | 274 | 279 | 283 | 287 | 294 | 290 | 285 |
| 2023 | 295 | 293 | 297 | 317 | 323 | 313 | 314 | 323 | 334 | 326 | 318 | 314 |
| 2024 | 306 | 305 | 314 | 301 | 303 | 302 | 295 | 302 | 301 | 317 | | |
| Adoption - SEA | | | | | | | | | | | | |
| 2022 | 177 | 182 | 197 | 182 | 158 | 156 | 169 | 175 | 178 | 178 | 181 | 181 |
| 2023 | 179 | 193 | 186 | 180 | 177 | 182 | 178 | 177 | 169 | 172 | 172 | 159 |
| 2024 | 155 | 164 | 165 | 157 | 155 | 152 | 154 | 154 | 148 | 148 | | |
| Parentage - SEA | | | | | | | | | | | | |
| 2022 | 86 | 78 | 73 | 65 | 56 | 56 | 63 | 65 | 71 | 65 | 71 | 82 |
| 2023 | 68 | 69 | 77 | 73 | 69 | 84 | 85 | 83 | 82 | 83 | 81 | 93 |
| 2024 | 96 | 96 | 96 | 103 | 101 | 96 | 88 | 101 | 97 | 93 | | |
| MRJC | | | | | | | | | | | | |
| TOTAL - MRJC | | | | | | | | | | | | |
| 2022 | 4638 | 4544 | 4567 | 4548 | 4528 | 4570 | 4488 | 4616 | 4754 | 4761 | 4837 | 4820 |
| 2023 | 4686 | 4773 | 4873 | 4957 | 5025 | 5117 | 5150 | 5205 | 5358 | 5336 | 5570 | 5485 |
| 2024 | 5678 | 5809 | 5947 | 6143 | 6301 | 6268 | 6372 | 6558 | 6541 | 6504 | | |
| Civil - MRJC | | | | | | | | | | | | |
| 2022 | 2007 | 1990 | 2016 | 2008 | 2026 | 2072 | 2049 | 2112 | 2158 | 2156 | 2218 | 2235 |
| 2023 | 2198 | 2241 | 2267 | 2297 | 2343 | 2428 | 2450 | 2519 | 2640 | 2612 | 2813 | 2831 |
| 2024 | 2947 | 3069 | 3131 | 3228 | 3418 | 3417 | 3478 | 3586 | 3548 | 3504 | | |
| Domestic - MRJC | | | | | | | | | | | | |
| 2022 | 1727 | 1695 | 1748 | 1757 | 1724 | 1739 | 1675 | 1695 | 1779 | 1762 | 1769 | 1737 |
| 2023 | 1670 | 1702 | 1754 | 1800 | 1809 | 1810 | 1799 | 1799 | 1808 | 1787 | 1801 | 1728 |
| 2024 | 1776 | 1768 | 1802 | 1911 | 1891 | 1870 | 1888 | 1920 | 1950 | 1957 | | |
| Probate - MRJC | | | | | | | | | | | | |
| 2022 | 460 | 452 | 418 | 373 | 368 | 350 | 368 | 383 | 386 | 393 | 415 | 422 |
| 2023 | 409 | 411 | 410 | 428 | 433 | 435 | 451 | 453 | 460 | 480 | 484 | 461 |
| 2024 | 492 | 505 | 523 | 532 | 518 | 503 | 530 | 539 | 539 | 551 | | |
| Guardianship - MRJC | | | | | | | | | | | | |
| 2022 | 193 | 158 | 152 | 190 | 197 | 200 | 188 | 211 | 205 | 214 | 204 | 204 |
| 2023 | 184 | 203 | 225 | 213 | 215 | 219 | 222 | 212 | 229 | 229 | 235 | 227 |
| 2024 | 232 | 247 | 259 | 245 | 233 | 235 | 249 | 272 | 274 | 273 | | |
| Adoption - MRJC | | | | | | | | | | | | |
| 2022 | 83 | 82 | 75 | 78 | 74 | 75 | 73 | 80 | 87 | 90 | 87 | 78 |
| 2023 | 79 | 77 | 80 | 87 | 86 | 81 | 84 | 86 | 79 | 85 | 83 | 78 |
| 2024 | 78 | 74 | 73 | 70 | 75 | 77 | 76 | 78 | 75 | 76 | | |
| Parentage - MRJC | | | | | | | | | | | | |
| 2022 | 168 | 167 | 158 | 142 | 139 | 134 | 135 | 135 | 139 | 146 | 144 | 144 |
| 2023 | 146 | 139 | 137 | 132 | 139 | 144 | 144 | 136 | 142 | 143 | 154 | 160 |
| 2024 | 153 | 146 | 159 | 157 | 166 | 166 | 151 | 163 | 155 | 143 | | |
| SEA/MRJC | | | | | | | | | | | | |
| 2022 | 12776 | 12655 | 12669 | 12584 | 12434 | 12710 | 12587 | 12855 | 13214 | 13328 | 13447 | 13471 |
| 2023 | 13151 | 13432 | 13637 | 13732 | 13840 | 14118 | 14203 | 14456 | 14824 | 14900 | 15385 | 15082 |
| 2024 | 15374 | 15636 | 15772 | 16137 | 16498 | 16553 | 16511 | 17050 | 17095 | 17094 | | |

Pending caseload = cases remain active and unresolved at the end of reporting period, excluding cases on suspense status (in arbitration, appeal).

Table 5. Age of Pending Cases

| SEA | Oct 2023 | Nov 2023 | Dec 2023 | Jan 2024 | Feb 2024 | Mar 2024 | Apr 2024 | May 2024 | Jun 2024 | Jul 2024 | Aug 2024 | Sep 2024 | Oct 2024 |
|--|----------|----------|----------|----------|----------|----------|----------|----------|----------|----------|----------|----------|----------|
| Civil - SEA | | | | | | | | | | | | | |
| Median Age (50 th percentile) * | 148 | 142 | 145 | 143 | 142 | 145 | 145 | 143 | 137 | 133 | 136 | 140 | 140 |
| # of Cases in Age Interval | | | | | | | | | | | | | |
| 0 - 120 days (0 - 4 months) | 2253 | 2373 | 2284 | 2332 | 2324 | 2265 | 2423 | 2528 | 2633 | 2662 | 2673 | 2672 | 2654 |
| 121 - 240 days (5 - 8 months) | 1108 | 1140 | 1224 | 1186 | 1295 | 1346 | 1377 | 1457 | 1454 | 1375 | 1508 | 1549 | 1611 |
| 241 - 360 days (9 - 12 months) | 717 | 725 | 709 | 718 | 714 | 744 | 763 | 737 | 803 | 799 | 863 | 872 | 850 |
| 361 - 540 days (13 - 18 months) | 580 | 572 | 522 | 499 | 485 | 468 | 460 | 498 | 497 | 457 | 473 | 493 | 522 |
| 541 - 720 days (19 - 24 months) | 208 | 240 | 255 | 265 | 255 | 242 | 237 | 233 | 206 | 188 | 184 | 185 | 168 |
| > 720 days (> 24 months) | 255 | 263 | 250 | 234 | 233 | 235 | 197 | 210 | 152 | 164 | 164 | 145 | 137 |
| Domestic - SEA | | | | | | | | | | | | | |
| Median Age (50 th percentile) * | 142 | 143 | 152 | 155 | 157 | 154 | 148 | 136 | 139 | 141 | 138 | 144 | 143 |
| # of Cases in Age Interval | | | | | | | | | | | | | |
| 0 - 120 days (0 - 4 months) | 1233 | 1242 | 1109 | 1098 | 1111 | 1157 | 1267 | 1279 | 1274 | 1239 | 1242 | 1257 | 1224 |
| 121 - 240 days (5 - 8 months) | 658 | 648 | 689 | 750 | 744 | 722 | 636 | 610 | 617 | 654 | 737 | 736 | 736 |
| 241 - 360 days (9 - 12 months) | 372 | 413 | 396 | 399 | 393 | 381 | 395 | 422 | 426 | 399 | 378 | 354 | 369 |
| 361 - 540 days (13 - 18 months) | 260 | 246 | 212 | 218 | 229 | 237 | 216 | 217 | 227 | 224 | 235 | 243 | 228 |
| > 540 days (> 18 months) | 258 | 260 | 270 | 274 | 274 | 265 | 271 | 257 | 250 | 246 | 252 | 242 | 237 |
| Probate - SEA | | | | | | | | | | | | | |
| Median Age (50 th percentile) * | 575 | 568 | 605 | 586 | 568 | 621 | 624 | 647 | 663 | 694 | 690 | 679 | 667 |
| # of Cases in Age Interval | | | | | | | | | | | | | |
| 0 - 120 days (0 - 4 months) | 224 | 241 | 212 | 251 | 268 | 233 | 256 | 234 | 232 | 215 | 226 | 237 | 248 |
| 121 - 240 days (5 - 8 months) | 118 | 111 | 114 | 106 | 113 | 119 | 108 | 112 | 105 | 96 | 102 | 104 | 113 |
| 241 - 360 days (9 - 12 months) | 81 | 93 | 101 | 98 | 99 | 89 | 93 | 90 | 88 | 101 | 88 | 94 | 87 |
| 361 - 540 days (13 - 18 months) | 100 | 97 | 89 | 107 | 111 | 116 | 104 | 113 | 117 | 105 | 122 | 120 | 129 |
| > 540 days (> 18 months) | 558 | 580 | 595 | 604 | 614 | 631 | 630 | 641 | 654 | 678 | 688 | 705 | 719 |
| Guardianship - SEA | | | | | | | | | | | | | |
| Median Age (50 th percentile) * | 412 | 461 | 499 | 552 | 581 | 583 | 642 | 673 | 703 | 737 | 762 | 776 | 645 |
| # of Cases in Age Interval | | | | | | | | | | | | | |
| 0 - 120 days (0 - 4 months) | 105 | 100 | 99 | 96 | 89 | 104 | 100 | 103 | 101 | 93 | 94 | 90 | 102 |
| 121 - 240 days (5 - 8 months) | 24 | 23 | 17 | 20 | 25 | 20 | 18 | 14 | 14 | 18 | 20 | 21 | 23 |
| 241 - 360 days (9 - 12 months) | 25 | 20 | 25 | 11 | 9 | 9 | 10 | 11 | 13 | 11 | 12 | 8 | 10 |
| 361 - 540 days (13 - 18 months) | 30 | 29 | 25 | 24 | 23 | 17 | 14 | 13 | 13 | 7 | 8 | 15 | 14 |
| > 540 days (> 18 months) | 142 | 146 | 148 | 155 | 159 | 164 | 159 | 162 | 161 | 166 | 168 | 167 | 168 |
| Adoption - SEA | | | | | | | | | | | | | |
| Median Age (50 th percentile) * | 623 | 653 | 787 | 608 | 539 | 559 | 643 | 674 | 724 | 745 | 778 | 817 | 847 |
| # of Cases in Age Interval | | | | | | | | | | | | | |
| 0 - 120 days (0 - 4 months) | 34 | 35 | 24 | 33 | 45 | 44 | 42 | 37 | 28 | 31 | 31 | 30 | 30 |
| 121 - 240 days (5 - 8 months) | 15 | 11 | 11 | 12 | 14 | 15 | 11 | 11 | 15 | 13 | 15 | 13 | 8 |
| 241 - 360 days (9 - 12 months) | 9 | 10 | 12 | 12 | 8 | 6 | 4 | 6 | 7 | 9 | 8 | 6 | 11 |
| 361 - 540 days (13 - 18 months) | 23 | 20 | 15 | 12 | 15 | 16 | 13 | 12 | 13 | 12 | 6 | 9 | 8 |
| > 540 days (> 18 months) | 91 | 96 | 97 | 86 | 82 | 84 | 87 | 89 | 89 | 89 | 94 | 90 | 91 |
| Parentage - SEA | | | | | | | | | | | | | |
| Median Age (50 th percentile) * | 146 | 157 | 144 | 135 | 141 | 136 | 125 | 136 | 128 | 122 | 111 | 134 | 143 |
| # of Cases in Age Interval | | | | | | | | | | | | | |
| 0 - 120 days (0 - 4 months) | 35 | 32 | 43 | 42 | 45 | 45 | 50 | 47 | 46 | 42 | 51 | 45 | 38 |
| 121 - 240 days (5 - 8 months) | 26 | 22 | 23 | 23 | 21 | 22 | 24 | 26 | 23 | 21 | 21 | 23 | 29 |
| 241 - 360 days (9 - 12 months) | 9 | 13 | 12 | 16 | 18 | 14 | 12 | 14 | 13 | 12 | 14 | 15 | 14 |
| 361 - 540 days (13 - 18 months) | 11 | 12 | 13 | 14 | 8 | 10 | 11 | 10 | 9 | 8 | 11 | 9 | 7 |
| > 540 days (> 18 months) | 2 | 2 | 2 | 1 | 4 | 5 | 6 | 4 | 5 | 5 | 4 | 5 | 5 |

*Age of active pending cases is time elapsed from filing date to the end of the reporting period, minus any suspense time (in appeal, stay, mediation, arbitration) if applicable. The "median age" indicates the age of half (50%) of the pending cases (half are more, half are less) than the number of days indicated in the table.

"Civil" includes all civil actions (including RALJ), except "Matters Filed with Clerk" (Petition for Order Granting Judgment on Confession of Judgment, Tax Warrants, Abstract of Judgment, Foreign Judgment, and Transcript of Judgment), Domestic, Probate, Guardianship, Adoption, and Paternity cases.

Table 5. Age of Pending Cases (cont.)

| MRJC | Oct 2023 | Nov 2023 | Dec 2023 | Jan 2024 | Feb 2024 | Mar 2024 | Apr 2024 | May 2024 | Jun 2024 | Jul 2024 | Aug 2024 | Sep 2024 | Oct 2024 |
|--|----------|----------|----------|----------|----------|----------|----------|----------|----------|----------|----------|----------|----------|
| Civil - MRJC | | | | | | | | | | | | | |
| Median Age (50 th percentile) * | 124 | 116 | 123 | 119 | 116 | 117 | 106 | 115 | 117 | 115 | 128 | 132 | 129 |
| # of Cases in Age Interval | | | | | | | | | | | | | |
| 0 - 120 days (0 - 4 months) | 1292 | 1426 | 1395 | 1490 | 1565 | 1601 | 1727 | 1780 | 1761 | 1790 | 1718 | 1676 | 1647 |
| 121 - 240 days (5 - 8 months) | 501 | 543 | 614 | 678 | 732 | 799 | 788 | 870 | 941 | 943 | 1101 | 1089 | 1044 |
| 241 - 360 days (9 - 12 months) | 269 | 292 | 320 | 297 | 277 | 274 | 317 | 369 | 411 | 444 | 443 | 461 | 496 |
| 361 - 540 days (13 - 18 months) | 210 | 207 | 171 | 175 | 185 | 173 | 168 | 164 | 174 | 180 | 193 | 210 | 219 |
| 541 - 720 days (19 - 24 months) | 92 | 85 | 89 | 87 | 86 | 88 | 78 | 87 | 70 | 63 | 70 | 60 | 51 |
| > 720 days (> 24 months) | 248 | 260 | 242 | 220 | 224 | 196 | 150 | 148 | 60 | 58 | 61 | 52 | 47 |
| Domestic- MRJC | | | | | | | | | | | | | |
| Median Age (50 th percentile) * | 160 | 156 | 164 | 170 | 171 | 167 | 162 | 150 | 157 | 154 | 158 | 160 | 162 |
| # of Cases in Age Interval | | | | | | | | | | | | | |
| 0 - 120 days (0 - 4 months) | 746 | 725 | 667 | 685 | 683 | 720 | 816 | 804 | 790 | 785 | 764 | 798 | 795 |
| 121 - 240 days (5 - 8 months) | 458 | 476 | 451 | 462 | 462 | 420 | 404 | 419 | 417 | 443 | 498 | 489 | 516 |
| 241 - 360 days (9 - 12 months) | 237 | 258 | 273 | 282 | 269 | 307 | 299 | 289 | 287 | 272 | 269 | 286 | 275 |
| 361 - 540 days (13 - 18 months) | 135 | 128 | 118 | 127 | 144 | 148 | 175 | 166 | 164 | 172 | 174 | 174 | 168 |
| > 540 days (> 18 months) | 211 | 214 | 219 | 220 | 210 | 207 | 217 | 213 | 212 | 216 | 215 | 203 | 203 |
| Probate – MRJC | | | | | | | | | | | | | |
| Median Age (50 th percentile) * | 400 | 429 | 490 | 470 | 477 | 479 | 454 | 521 | 581 | 540 | 551 | 581 | 577 |
| # of Cases in Age Interval | | | | | | | | | | | | | |
| 0 - 120 days (0 - 4 months) | 135 | 127 | 100 | 114 | 124 | 138 | 156 | 140 | 119 | 125 | 131 | 129 | 141 |
| 121 - 240 days (5 - 8 months) | 58 | 55 | 48 | 51 | 54 | 47 | 43 | 41 | 44 | 59 | 56 | 51 | 44 |
| 241 - 360 days (9 - 12 months) | 34 | 38 | 47 | 54 | 45 | 43 | 32 | 30 | 34 | 28 | 34 | 31 | 32 |
| 361 - 540 days (13 - 18 months) | 41 | 45 | 47 | 47 | 52 | 53 | 53 | 51 | 47 | 53 | 47 | 48 | 43 |
| > 540 days (> 18 months) | 212 | 219 | 219 | 226 | 230 | 242 | 248 | 256 | 259 | 265 | 271 | 280 | 291 |
| Guardianship - MRJC | | | | | | | | | | | | | |
| Median Age (50 th percentile) * | 223 | 247 | 280 | 257 | 234 | 214 | 237 | 305 | 298 | 267 | 214 | 215 | 228 |
| # of Cases in Age Interval | | | | | | | | | | | | | |
| 0 - 120 days (0 - 4 months) | 89 | 87 | 78 | 89 | 100 | 106 | 95 | 80 | 80 | 93 | 112 | 114 | 106 |
| 121 - 240 days (5 - 8 months) | 32 | 30 | 26 | 26 | 25 | 27 | 28 | 27 | 29 | 29 | 29 | 26 | 33 |
| 241 - 360 days (9 - 12 months) | 16 | 23 | 23 | 19 | 21 | 19 | 17 | 19 | 16 | 15 | 18 | 14 | 16 |
| 361 - 540 days (13 - 18 months) | 21 | 22 | 28 | 14 | 16 | 23 | 20 | 19 | 21 | 22 | 20 | 23 | 19 |
| > 540 days (> 18 months) | 71 | 73 | 72 | 84 | 85 | 84 | 85 | 88 | 89 | 90 | 93 | 97 | 99 |
| Adoption – MRJC | | | | | | | | | | | | | |
| Median Age (50 th percentile) * | 1050 | 1136 | 1389 | 1415 | 1460 | 1473 | 1521 | 1319 | 1293 | 1352 | 1299 | 1385 | 1360 |
| # of Cases in Age Interval | | | | | | | | | | | | | |
| 0 - 120 days (0 - 4 months) | 15 | 12 | 8 | 8 | 5 | 8 | 7 | 11 | 13 | 11 | 12 | 9 | 7 |
| 121 - 240 days (5 - 8 months) | 6 | 7 | 7 | 6 | 7 | 5 | 3 | 3 | 1 | 2 | 3 | 5 | 8 |
| 241 - 360 days (9 - 12 months) | 1 | 1 | 0 | 2 | 3 | 3 | 4 | 4 | 4 | 4 | 3 | 2 | 0 |
| 361 - 540 days (13 - 18 months) | 12 | 11 | 9 | 8 | 6 | 5 | 1 | 2 | 3 | 3 | 4 | 5 | 7 |
| > 540 days (> 18 months) | 51 | 52 | 54 | 54 | 53 | 52 | 55 | 55 | 56 | 56 | 56 | 54 | 54 |
| Parentage – MRJC | | | | | | | | | | | | | |
| Median Age (50 th percentile) * | 155 | 151 | 161 | 170 | 168 | 168 | 175 | 170 | 178 | 139 | 137 | 144 | 154 |
| # of Cases in Age Interval | | | | | | | | | | | | | |
| 0 - 120 days (0 - 4 months) | 57 | 62 | 65 | 57 | 53 | 48 | 47 | 68 | 69 | 64 | 74 | 61 | 56 |
| 121 - 240 days (5 - 8 months) | 39 | 46 | 41 | 44 | 44 | 55 | 53 | 46 | 39 | 37 | 41 | 54 | 55 |
| 241 - 360 days (9 - 12 months) | 20 | 22 | 27 | 25 | 26 | 32 | 31 | 27 | 31 | 27 | 22 | 16 | 14 |
| 361 - 540 days (13 - 18 months) | 14 | 12 | 16 | 15 | 15 | 15 | 16 | 17 | 17 | 16 | 18 | 18 | 12 |
| > 540 days (> 18 months) | 13 | 12 | 11 | 12 | 8 | 9 | 10 | 8 | 10 | 7 | 8 | 6 | 6 |

*Age of active pending cases is time elapsed from filing date to the end of the reporting period, minus any suspense time (in appeal, stay, mediation, arbitration) if applicable. The “median age” indicates the age of half (50%) of the pending cases (half are more, half are less) than the number of days indicated in the table.

“Civil” includes all civil actions (including RALJ), except “Matters Filed with Clerk” (Petition for Order Granting Judgment on Confession of Judgment, Tax Warrants, Abstract of Judgment, Foreign Judgment, and Transcript of Judgment), Domestic, Probate, Guardianship, Adoption, and Parentage cases.

Table 6. SEA/MRJC Filings, Resolutions, and Pending Caseload as a Percentage of All Cases

| | Oct 2023 | Nov 2023 | Dec 2023 | Jan 2024 | Feb 2024 | Mar 2024 | Apr 2024 | May 2024 | Jun 2024 | Jul 2024 | Aug 2024 | Sep 2024 | Oct 2024 |
|----------------------------|--------------|--------------|--------------|--------------|--------------|--------------|--------------|--------------|--------------|--------------|--------------|--------------|--------------|
| Total Filings | 3354 | 3208 | 2822 | 3274 | 3343 | 3397 | 3491 | 3670 | 3243 | 3533 | 3338 | 3471 | 3812 |
| SEA - # of Cases Filed | 2082 | 1964 | 1734 | 1988 | 1961 | 2004 | 2065 | 2243 | 2016 | 2054 | 2049 | 2079 | 2300 |
| MRJC - # of Cases Filed | 1272 | 1244 | 1088 | 1286 | 1382 | 1393 | 1426 | 1427 | 1227 | 1479 | 1289 | 1392 | 1512 |
| SEA % | 62% | 61% | 61% | 61% | 59% | 59% | 59% | 61% | 62% | 58% | 61% | 60% | 60% |
| MRJC % | 38% | 39% | 39% | 39% | 41% | 41% | 41% | 39% | 38% | 42% | 39% | 40% | 40% |
| Total Resolutions | 3006 | 2827 | 2749 | 3068 | 3038 | 3325 | 3047 | 3306 | 2981 | 3308 | 3106 | 3194 | 3596 |
| SEA - # of Cases Resolved | 1808 | 1770 | 1740 | 1934 | 1837 | 2033 | 1854 | 2014 | 1805 | 2034 | 1928 | 1891 | 2124 |
| MRJC - # of Cases Resolved | 1198 | 1057 | 1009 | 1134 | 1201 | 1292 | 1193 | 1292 | 1176 | 1274 | 1178 | 1303 | 1472 |
| SEA % | 60% | 63% | 63% | 63% | 60% | 61% | 61% | 61% | 61% | 61% | 62% | 59% | 59% |
| MRJC % | 40% | 37% | 37% | 37% | 40% | 39% | 39% | 39% | 39% | 39% | 38% | 41% | 41% |
| Total Pending Cases | 14900 | 15385 | 15082 | 15374 | 15636 | 15772 | 16137 | 16498 | 16553 | 16511 | 17050 | 17095 | 17094 |
| SEA - # of Cases Pending | 9564 | 9815 | 9597 | 9696 | 9827 | 9825 | 9994 | 10197 | 10285 | 10139 | 10492 | 10554 | 10590 |
| MRJC - # of Cases Pending | 5336 | 5570 | 5485 | 5678 | 5809 | 5947 | 6143 | 6301 | 6268 | 6372 | 6558 | 6541 | 6504 |
| SEA % | 64% | 64% | 64% | 63% | 63% | 62% | 62% | 62% | 62% | 61% | 62% | 62% | 62% |
| MRJC % | 36% | 36% | 36% | 37% | 37% | 38% | 38% | 38% | 38% | 39% | 38% | 38% | 38% |

All civil actions (including RALJ), except "Matters Filed with Clerk" (Petition for Order Granting Judgment on Confession of Judgment, Tax Warrants, Abstract of Judgment, Foreign Judgment, and Transcript of Judgment), Domestic, Probate, Guardianship, Adoption, and Parentage cases.

Appendix Glossary and Definition

Active Status

A case is active if it is not on suspense status (see Suspense Status).

Adoption and Parentage Cases (case type 5)

ADP - Adoption
CFI - Confidential Intermediary
CHN - Confidential Change of Name
DIP - Disestablishment of Parentage
MDS - Modification/Support Only
MOD - Modification
MSC - Miscellaneous
OAA - Open Adoption Agreement
PAD - De Facto Parentage
PAG - Pre Birth Establish Parentage Genetic
PAS - Establish Parentage Gestational Surrogacy
PAT - Parentage
PPR - Initial Pre Placement Report
PRC - Parentage Rescission/Challenge
PUR - Parentage (URES/UIFSA)
REL - Relinquishment
ROB - Relocation Objection
TER - Termination of Parental Rights

Case

A case is defined as a filing with an assigned case number.

Civil Cases (case type 2, no RALJ)

ALR - Administrative Law Review
ALRLI - L&I Administrative Law Review
AOD - Assurance of Discontinuance
ASB - Asbestos
ASP - Asbestos Personal Injury
ASW - Asbestos Wrongful Death
BAT - Petition to Appeal/Amend Ballot Title
CAA - Motion to Confirm/Compel Arbitration Award
CFJ - Petition for Order Granting Judgment on Confession of Judgment
CHN - Non Confidential Change of Name
COL - Collection
COM - Commercial
CON - Condemnation
CRP - Certificate of Restoration of Opportunity
CRR - Petition for Certificate of Rehabilitation
DOL - Appeal Licensing Revocation
DSF - Notice of Deposit of Surplus Funds from Trustee's Sale of Real Property
DVP - Domestic Violence
ECP - Enforcement of Canadian Protection Order
EOM - Emancipation of Minor
FOR - Foreclosure
FPO - Foreign Protection Order
FVL - Motion to Show Cause /Fruivolous Lien
HAR - Unlawful Harassment
HSI - Application for Health & Safety Inspection
INJ - Injunction
IPL - Complaint for Interpleader
LUP - Land Use Petition
MAL - Other Malpractice
MED - Medical Malpractice
MER - Meretricious Relationships
MHA - Malicious Harassment
MSC - Miscellaneous
MST - Minor Settlement
MWP - Minor Work Permit
NJF - Non Judicial Filing
OSS - Petition to Issue Out of State Subpoena
PBC - Petition for Birth Certificate Change
PBJ - Petition for Justification /Bail Bond Company
PCC - Petition for Civil Commitment

PFA - Property Fairness Act
PIN - Personal Injury
PPT - Petition for Perpetuation of Testimony
PRA - Public Records Act
PRG - Property Damage /Gangs
PRP - Property Damage
PVO - Petition for Vehicle Ownership
QTI - Quiet Title
RCV - Petition to Appoint Receiver
RDR - Relief from Duty to Register
RFR - Restoration of Firearms Rights
RRC - Remove Restricted Covenant
SCA - Small Claims Appeal
SDR - School District /Required Action Plan
SER - Subdivision Election Process Law Review
SPC - Seizure of Property From Commission of a Crime
SPR - Seizure of Property Resulting From a Crime
STK - Stalking Protection
SXP - Sexual Assault Protection
TMV - Tort /Motor Vehicle
TSS - Petition for Approval of Transfer of Structured Settlement
TTO - Tort /Other
UND - Unlawful Detainer
VAP - Vulnerable Adult Protection Order
VEP - Voter Election Process Law Review
VVT - Victims of Motor Vehicle Theft /Civil Action
WDE - Wrongful Death
WHC - Writ of Habeas Corpus
WMW - Miscellaneous Writs
WRM - Writ of Mandamus
WRR - Writ of Restitution
WRV - Writ of Review
XRP - Extreme Risk Protection Order

Completion

A case is completed if dispositive document is filed with the court following resolution.

Domestic Cases (case type 3)

CIR - Committed Intimate Relationship
CUS - Child Custody
DIC - Dissolution w/ Children
DIN - Dissolution no Children
DIS - Dissolution
DPC - Dissolution of Domestic Partnership w/ Children
DPN - Dissolution of Domestic Partnership /No Children
FJU - Out of State Support Registration /Foreign Judgment
INC - Annulment /Inv of Marriage w/ Children
IND - Annulment /Inv of Domestic Partnership w/ Children
INP - Invalidity, Domestic Partnership
INV - Annulment /Invalidity
MDS - Modification/Support Only
MOD - Modification
MSC - Miscellaneous
MWA - Mandatory Wage Assignment
OSC - Out of State Custody
PPS - Parenting Plan / Child Support
PSO - Petition for Entry of KC Support Order
RCV - Relative Child Visitation
RIC - Reciprocal, Resp in County
ROB - Relocation /Objection
ROC - Reciprocal, Resp out of County
RVC - Relative Child Visits
SDC - Legal Separation, Domestic Partnership w/ Children
SEC - Legal Separation w/ Children
SEP - Legal Separation
SPD - Legal Separation, Domestic Partnership /No Children
TSS - Structured Settlement

EFC - Extended Foster Care, Dependency
GFC - Guardianship Foster Children
RPR - Reinstatement of Parental Rights
RVS - Relative Visitation
TRU - Truancy
VYG - Vulnerable Youth Guardianship

Probate and Guardianship Cases (case type 4)

ABS - Absentee
AOS - Affidavit of Successor
ASE - Affidavit of Small Estate
DSC - Disclaimer
EST - Estate
FNW - Foreign Will
G/E - Guardianship/Estate
GDE - Guardianship of the Estate
GDN - Guardianship
GDP - Guardianship of the Person
LGD - Limited Guardianship
LGE - Limited Guardianship of the Estate
LGP - Limited Guardianship of the Person
MGD - Minor Guardianship
MSC - Miscellaneous
MST - Minor Settlement
NJB - Non Judicial Binding/TEDRA Agreement
NNC - Non Probate Notice to Creditor
POA - Petition for Relief (RCW 11.94) /Power of Attorney
RGR - Registration of Guardianship
RTR - Registration of Trust /Trust Situs
SNT - Special Needs Trust
TDR - Trust/Estate Dispute Resolution
TRS - Trust
WLL - Will Only

Resolution

A case is resolved if all issues in the complaint are fully adjudicated.

Suspended Case

A case is placed in suspense status from active status during the reporting period.

Suspense Status

A case is on suspense status if it is on warrant, appeal, stay, mediation, arbitration ("Deferred Prosecution" is not a suspense status, but is treated as a resolution).