



King County

Department of Judicial Administration

Catherine Cornwall

Director and Superior Court Clerk

(206) 296-9300 (206) 296-0100 TTY/TDD

King County Superior Court

Civil Department Statistical Report

November 2024

Department of Judicial Administration

Prepared by: Shiquan Liao, Ph.D., Statistician

December 15, 2024

Report #: CIVIL-2024-11

Seattle Courthouse
516 Third Avenue Room E609
Seattle, WA 98104-2386

Maleng Regional Justice Center
401 Fourth Avenue North Room 2C
Kent, WA 98032-4429

*Clark Children and Family
Justice Center*
1211 East Alder Room 3015
Seattle, WA 98122-5598

Civil Statistics Summary

The civil statistics report provides an overview of the caseload for the Civil and UFC Departments. The report includes the number of filings, number of resolutions, number of pending cases, age of resolved cases, and age of pending cases for both the SEA and MRJC locations.

The following categories are included in this report: **Civil, Domestic, Probate, Guardianship, Adoption, and Parentage**. This report includes all cases in these categories, regardless of whether a judge is assigned at filing or not.

Please note that the category of “civil” in the tables of this report is more narrowly defined. Readers are encouraged to check the Appendix at the end of this report for precise definition of the terminology used in this report.

- **Filings (Table 1, Figures 1)**

In November 2024, the total number of filings was 2,948 cases. Of those cases filed in the month, 38% were MRJC cases, and the remaining 62% were SEA cases. The year-to-date average filings were 3,411 cases per month. In comparison, the average monthly filings in 2019, 2020, 2021, 2022 and 2023 were 3,083, 2,436, 2,429, 2,601, and 2,953 cases respectively.

- **Resolutions (Table 2, Figures 2)**

The total resolutions in November 2024 were 3,036 cases. Of those cases resolved in the month, 39% of the resolutions were MRJC cases. In 2024, the average monthly resolutions were 3,182 cases, a lower volume than the filings. In comparison, the average monthly resolutions in 2019, 2020, 2021, 2022 and 2023 were 3,091, 2,378, 2,450, 2,592, and 2,756 cases, respectively.

- **The Age of Resolved Cases (Table 3)**

Table 3 shows the comparison between the court-adopted timeline standard (as suggested by the State Advisory Committee) with the actual age of resolved cases (time from filing to resolution).

- **Pending Caseload (Table 4, Figures 3) and Age of Pending Cases (Table 5)**

At the end of November 2024, the pending caseload for the civil department was 16,673 cases, 62% being SEA cases and 38% being MRJC cases. The pending caseload is seeing a significant increase, particularly in general civil cases (case type 2) recently. The age breakdown of pending cases is presented in Table 5. SEA had 128 civil cases over 24 months and 230 domestic cases over 18 months. MRJC had 45 general civil cases over 24 months and 204 domestic cases over 18 months.

Conclusions: Filings in recent months have gradually increased from the low volume during the COVID-19. In 2024, the average monthly filings were 3,411 cases. In the same period, the court resolved 3,182 cases per month on average. At the end of November 2024, the total pending caseload in the reporting categories was 16,673 cases. Particularly, there has been an increasing trend in pending civil and probate caseload. In comparison, the pending caseload in the same reporting categories was 15,059, 14,371, 14,085, 12,941, 13,471, and 15,082 at the year end of 2018, 2019, 2020, 2021, 2022 and 2023 respectively.

Figure 1. Monthly Filings for SEA, MRJC and SEA/MRJC Combined

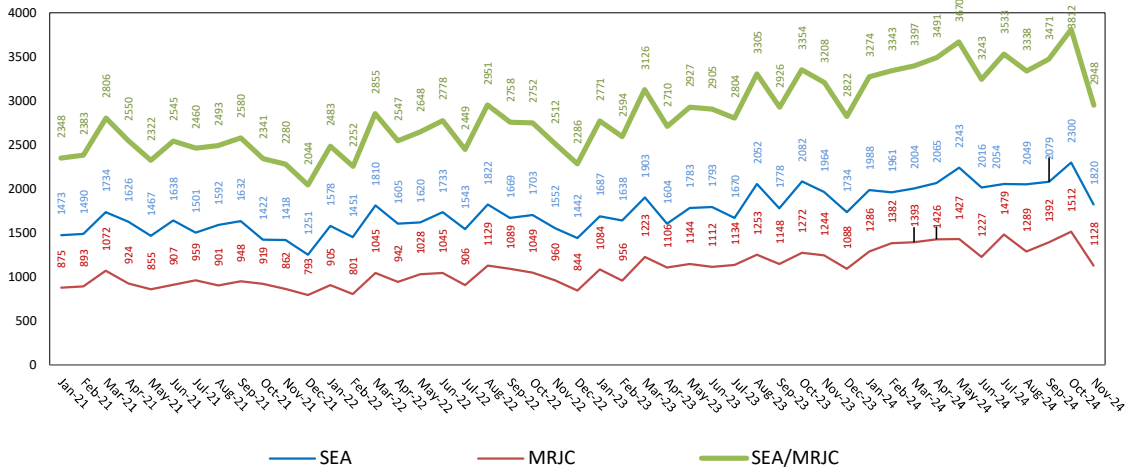


Figure 2. Monthly Resolutions for SEA, MRJC and SEA/MRJC Combined

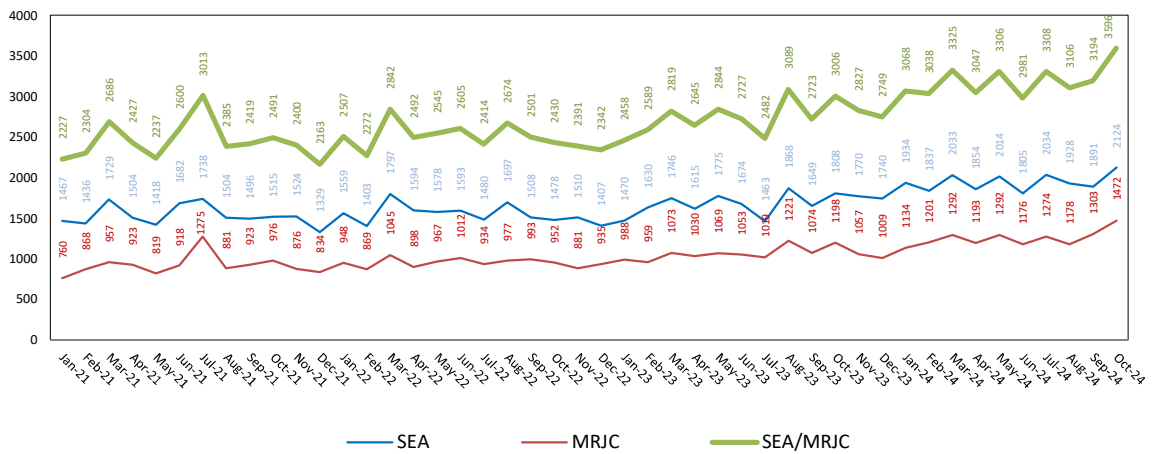


Figure 3. Monthly Pending Caseload for SEA, MRJC and SEA/MRJC Combined

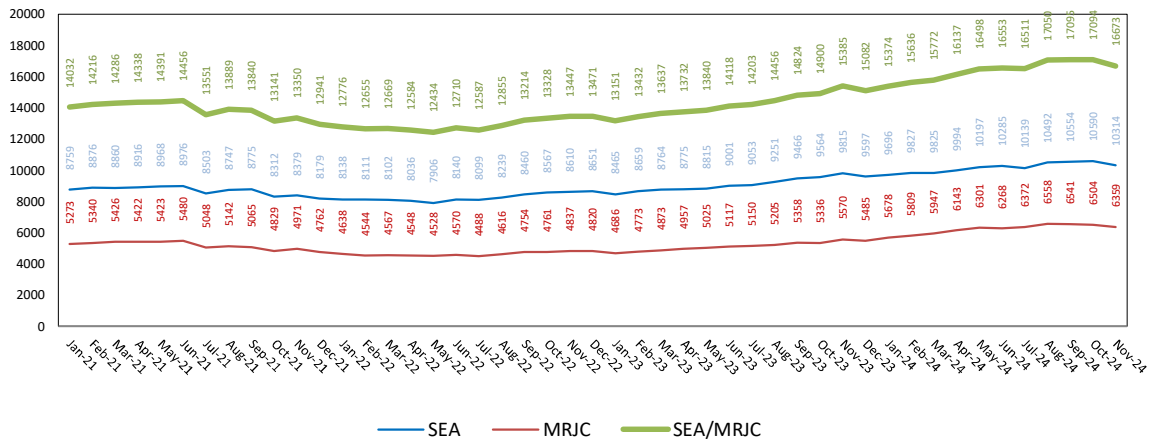


Table 1. Monthly New Filings

SEA	Jan	Feb	Mar	Apr	May	Jun	Jul	Aug	Sep	Oct	Nov	Dec
TOTAL - SEA												
2022	1578	1451	1810	1605	1620	1733	1543	1822	1669	1703	1552	1442
2023	1687	1638	1903	1604	1783	1793	1670	2052	1778	2082	1964	1734
2024	1988	1961	2004	2065	2243	2016	2054	2049	2079	2300	1820	
Civil - SEA												
2022	749	624	804	734	798	861	783	878	781	868	783	686
2023	749	765	918	817	897	932	942	1138	948	1211	1124	1029
2024	1053	1068	1057	1181	1284	1228	1186	1187	1244	1391	1114	
Domestic - SEA												
2022	298	275	326	333	314	343	286	348	327	296	275	262
2023	322	341	377	273	325	325	292	385	373	315	332	251
2024	335	326	355	369	368	335	339	360	367	346	274	
Probate - SEA												
2022	489	507	612	473	433	466	387	507	480	445	413	428
2023	520	467	516	439	483	451	367	445	383	468	453	387
2024	524	479	497	444	500	380	458	427	401	475	369	
Guardianship - SEA												
2022	14	11	12	36	51	38	45	52	44	49	43	33
2023	60	33	52	53	44	44	39	57	52	46	47	37
2024	46	46	56	40	51	43	37	41	39	57	38	
Adoption - SEA												
2022	16	25	39	17	15	18	27	24	22	33	22	16
2023	25	26	24	20	20	19	18	22	9	25	21	10
2024	16	27	25	12	20	13	24	14	16	17	17	
Parentage - SEA												
2022	12	9	17	12	9	7	15	13	15	11	16	17
2023	11	6	16	2	14	22	12	5	13	17	12	20
2024	14	15	14	19	20	17	10	20	12	14	8	

MRJC	Jan	Feb	Mar	Apr	May	Jun	Jul	Aug	Sep	Oct	Nov	Dec
TOTAL - MRJC												
2022	905	801	1045	942	1028	1045	906	1129	1089	1049	960	844
2023	1084	956	1223	1106	1144	1112	1134	1253	1148	1272	1244	1088
2024	1286	1382	1393	1426	1427	1227	1479	1289	1392	1512	1128	
Civil - MRJC												
2022	493	399	567	523	560	603	517	631	594	600	541	473
2023	585	552	691	614	662	669	699	810	746	793	695	729
2024	826	908	877	901	947	817	991	814	929	1024	797	
Domestic - MRJC												
2022	179	165	223	199	214	182	167	237	235	195	176	147
2023	213	187	249	229	221	209	216	203	177	213	209	166
2024	205	172	229	248	206	187	237	203	224	230	161	
Probate - MRJC												
2022	192	201	215	174	182	197	166	185	205	177	191	170
2023	221	170	206	206	196	166	160	188	154	199	186	149
2024	203	243	214	230	198	176	185	188	190	197	127	
Guardianship - MRJC												
2022	15	15	18	29	47	41	33	51	23	45	35	33
2023	38	38	58	36	39	40	34	33	48	45	40	29
2024	42	47	47	30	39	30	49	49	35	41	27	
Adoption - MRJC												
2022	4	9	7	7	6	7	7	10	15	9	3	5
2023	8	1	5	9	10	10	8	9	3	10	7	1
2024	2	2	7	3	7	6	4	8	3	6	6	
Parentage - MRJC												
2022	22	12	15	10	19	15	16	15	17	23	14	16
2023	19	8	14	12	16	18	17	10	20	12	15	14
2024	8	10	19	14	30	12	13	27	11	14	10	

"Civil" includes all civil actions (including RALJ), except "Matters Filed with Clerk" (Petition for Order Granting Judgment on Confession of Judgment, Tax Warrants, Abstract of Judgment, Foreign Judgment, and Transcript of Judgment), Domestic, Probate, Guardianship, Adoption, and Paternity cases.

Table 2. Monthly Resolutions

SEA	Jan	Feb	Mar	Apr	May	Jun	Jul	Aug	Sep	Oct	Nov	Dec
TOTAL - SEA												
2022	1559	1403	1797	1594	1578	1593	1480	1697	1508	1478	1510	1407
2023	1470	1630	1746	1615	1775	1674	1463	1868	1643	1808	1770	1740
2024	1934	1837	2033	1854	2014	1805	2034	1928	1891	2124	1858	
Civil - SEA												
2022	734	622	808	733	783	781	744	808	676	716	764	625
2023	681	801	842	825	897	853	769	1039	893	1000	937	959
2024	1101	1019	1106	984	1074	1077	1146	1125	1116	1267	1094	
Domestic - SEA												
2022	357	276	387	300	308	296	299	342	298	294	252	318
2023	255	283	325	291	350	315	266	322	293	291	340	328
2024	305	309	336	372	347	290	355	327	338	355	320	
Probate - SEA												
2022	418	438	535	467	404	455	380	479	455	386	420	409
2023	454	482	499	435	455	425	366	427	391	433	402	395
2024	464	430	510	417	498	371	454	405	370	435	375	
Guardianship - SEA												
2022	35	37	32	47	38	32	33	42	47	41	37	32
2023	43	36	45	32	36	57	36	47	39	49	50	35
2024	42	49	48	44	49	41	42	36	38	37	39	
Adoption - SEA												
2022	13	16	29	29	30	22	15	19	18	29	26	16
2023	20	15	28	25	22	14	16	26	20	20	25	15
2024	15	14	20	24	24	11	19	22	17	15	24	
Parentage - SEA												
2022	12	14	26	18	15	7	9	7	14	12	11	7
2023	17	13	7	7	15	10	10	7	13	15	16	8
2024	7	16	13	13	22	15	18	13	12	15	6	

MRJC	Jan	Feb	Mar	Apr	May	Jun	Jul	Aug	Sep	Oct	Nov	Dec
TOTAL - MRJC												
2022	948	869	1045	898	967	1012	934	977	993	952	881	935
2023	988	959	1073	1030	1069	1053	1019	1221	1074	1198	1057	1009
2024	1134	1201	1292	1193	1292	1176	1274	1178	1303	1472	1178	
Civil - MRJC												
2022	499	442	553	504	487	564	521	544	561	558	470	514
2023	501	560	622	589	615	613	624	758	681	768	648	617
2024	718	726	871	746	812	753	867	755	881	1005	842	
Domestic - MRJC												
2022	222	207	222	177	227	181	197	217	184	173	187	195
2023	208	179	202	190	210	208	202	216	189	200	187	188
2024	186	198	179	176	198	188	208	177	187	210	171	
Probate - MRJC												
2022	180	160	209	156	185	210	147	165	203	169	167	161
2023	214	178	199	186	190	161	143	185	144	178	175	166
2024	177	229	192	208	214	188	154	181	187	183	119	
Guardianship - MRJC												
2022	24	34	20	34	39	32	47	28	27	33	30	36
2023	46	25	31	45	34	44	27	40	32	41	28	30
2024	35	29	35	42	46	30	27	34	30	41	28	
Adoption - MRJC												
2022	5	4	18	4	9	5	7	5	7	7	8	14
2023	7	3	2	1	10	17	4	6	12	3	6	4
2024	3	4	7	7	2	3	3	7	3	9	5	
Parentage - MRJC												
2022	18	22	23	23	20	20	15	18	11	12	19	15
2023	12	14	17	19	10	10	19	16	16	8	13	4
2024	15	15	8	14	19	14	15	24	15	24	13	

"Civil" includes all civil actions (including RAL), except "Matters Filed with Clerk" (Petition for Order Granting Judgment on Confession of Judgment, Tax Warrants, Abstract of Judgment, Foreign Judgment, and Transcript of Judgment), Domestic, Probate, Guardianship, Adoption, and Parentage cases.

Table 3. Percentage of Cases Resolved in Specified Time Intervals

SEA	Nov 2023	Dec 2023	Jan 2024	Feb 2024	Mar 2024	Apr 2024	May 2024	Jun 2024	Jul 2024	Aug 2024	Sep 2024	Oct 2024	Nov 2024
Civil - SEA													
90% in 12 months	91%	88%	83%	88%	87%	89%	88%	83%	89%	89%	86%	87%	90%
98% in 18 months	97%	95%	91%	95%	94%	95%	94%	91%	96%	95%	93%	94%	96%
100% in 24 months	99%	98%	95%	98%	97%	98%	96%	93%	99%	98%	96%	97%	98%
Domestic - SEA													
90% in 8 months	56%	60%	56%	61%	55%	59%	57%	60%	60%	55%	61%	56%	61%
98% in 10 months	63%	70%	64%	68%	66%	69%	68%	74%	69%	65%	67%	67%	70%
100% in 14 months	82%	86%	84%	85%	88%	87%	82%	89%	87%	84%	86%	83%	84%
Probate - SEA													
90% in 8 months	100%	98%	99%	99%	98%	97%	99%	98%	98%	99%	99%	99%	100%
98% in 18 months	100%	99%	100%	100%	100%	99%	99%	100%	100%	100%	100%	100%	100%
100% in 36 months	100%	100%	100%	100%	100%	100%	100%	100%	100%	100%	100%	100%	100%
Guardianship - SEA													
90% in 8 months	94%	89%	93%	100%	94%	96%	92%	98%	95%	97%	100%	100%	97%
98% in 18 months	100%	97%	100%	100%	100%	98%	96%	100%	100%	97%	100%	100%	100%
100% in 36 months	100%	100%	100%	100%	100%	100%	100%	100%	100%	97%	100%	100%	100%
Adoption - SEA													
90% in 8 months	100%	100%	67%	64%	100%	88%	96%	100%	90%	91%	82%	93%	88%
98% in 10 months	100%	100%	67%	71%	100%	88%	100%	100%	95%	91%	82%	93%	96%
100% in 14 months	100%	100%	67%	71%	100%	96%	100%	100%	100%	91%	82%	93%	100%
Parentage - SEA													
90% in 8 months	69%	75%	86%	56%	77%	62%	73%	73%	72%	54%	92%	80%	83%
98% in 10 months	81%	88%	86%	75%	85%	69%	77%	73%	94%	77%	92%	87%	83%
100% in 14 months	94%	88%	86%	94%	92%	92%	77%	87%	100%	77%	92%	93%	100%

MRJC	Nov 2023	Dec 2023	Jan 2024	Feb 2024	Mar 2024	Apr 2024	May 2024	Jun 2024	Jul 2024	Aug 2024	Sep 2024	Oct 2024	Nov 2024
Civil - MRJC													
90% in 12 months	94%	91%	89%	94%	90%	93%	89%	82%	95%	93%	93%	93%	93%
98% in 18 months	97%	96%	92%	98%	95%	96%	93%	86%	98%	98%	96%	98%	98%
100% in 24 months	99%	97%	96%	99%	96%	99%	93%	88%	99%	99%	98%	99%	99%
Domestic - MRJC													
90% in 8 months	55%	49%	66%	58%	51%	62%	47%	55%	60%	50%	52%	49%	57%
98% in 10 months	72%	65%	74%	65%	61%	70%	61%	62%	67%	59%	58%	58%	68%
100% in 14 months	87%	86%	90%	84%	83%	92%	87%	83%	86%	81%	75%	82%	87%
Probate - MRJC													
90% in 8 months	99%	98%	100%	99%	98%	99%	97%	98%	99%	98%	99%	98%	97%
98% in 18 months	100%	100%	100%	100%	100%	100%	100%	100%	100%	100%	100%	99%	99%
100% in 36 months	100%	100%	100%	100%	100%	100%	100%	100%	100%	100%	100%	100%	100%
Guardianship - MRJC													
90% in 8 months	100%	93%	97%	90%	91%	93%	94%	90%	93%	91%	93%	85%	93%
98% in 18 months	100%	97%	100%	100%	97%	100%	100%	100%	96%	100%	100%	95%	100%
100% in 36 months	100%	100%	100%	100%	100%	100%	100%	100%	100%	100%	100%	100%	100%
Adoption - MRJC													
90% in 8 months	100%	75%	67%	25%	86%	71%	50%	100%	100%	100%	100%	67%	100%
98% in 10 months	100%	75%	100%	75%	86%	71%	50%	100%	100%	100%	100%	78%	100%
100% in 14 months	100%	75%	100%	75%	86%	71%	50%	100%	100%	100%	100%	78%	100%
Parentage - MRJC													
90% in 8 months	46%	0%	27%	47%	25%	64%	37%	64%	27%	21%	47%	50%	31%
98% in 10 months	54%	0%	60%	67%	63%	71%	53%	71%	60%	58%	60%	54%	46%
100% in 14 months	62%	100%	87%	80%	63%	93%	79%	93%	67%	79%	87%	79%	69%

Age of resolved cases – the time between filing and resolution, minus any suspense time if applicable.

Court adopted time guideline (based on suggestion from BJA State Advisory Committee, see LCR 4 official comment): (a) Civil - 90% by 360 days (12 months), 98% by 540 days (18 months); (b) Domestic - 90% by 240 days (8 months), 98% by 300 days (10 months); (c) Probate/Guardianship - 90% by 240 days (8 months), 98% by 540 days (18 months); (d) Adoption/Parentage - 90% by 240 days (8 months); 98% by 300 days (10 months).

“Civil” includes all civil actions (including RAL), except “Matters Filed with Clerk” (Petition for Order Granting Judgment on Confession of Judgment, Tax Warrants, Abstract of Judgment, Foreign Judgment, and Transcript of Judgment), Domestic, Probate, Guardianship, Adoption, and Parentage cases.

Table 4. Pending Caseload at the End of the Month

SEA	Jan	Feb	Mar	Apr	May	Jun	Jul	Aug	Sep	Oct	Nov	Dec
TOTAL - SEA												
2022	8138	8111	8102	8036	7906	8140	8099	8239	8460	8567	8610	8651
2023	8465	8659	8764	8775	8815	9001	9053	9251	9466	9564	9815	9597
2024	9696	9827	9825	9994	10197	10285	10139	10492	10554	10590	10314	
Civil - SEA												
2022	4151	4209	4177	4156	4086	4230	4203	4290	4428	4499	4522	4593
2023	4420	4514	4531	4563	4599	4734	4801	4897	5019	5121	5313	5244
2024	5234	5306	5300	5457	5663	5745	5645	5865	5916	5942	5750	
Domestic - SEA												
2022	2494	2483	2522	2509	2478	2555	2509	2531	2580	2559	2588	2544
2023	2491	2599	2663	2638	2623	2638	2635	2713	2816	2781	2809	2676
2024	2739	2751	2762	2785	2785	2794	2762	2844	2832	2794	2734	
Probate - SEA												
2022	960	934	937	864	862	866	876	895	916	972	958	966
2023	1012	991	1010	1004	1024	1050	1040	1058	1046	1081	1122	1111
2024	1166	1205	1188	1191	1190	1196	1195	1226	1260	1296	1282	
Guardianship - SEA												
2022	270	225	196	260	266	274	279	283	287	294	290	285
2023	295	293	297	317	323	313	314	323	334	326	318	314
2024	306	305	314	301	303	302	295	302	301	317	316	
Adoption - SEA												
2022	177	182	197	182	158	156	169	175	178	178	181	181
2023	179	193	186	180	177	182	178	177	169	172	172	159
2024	155	164	165	157	155	152	154	154	148	148	139	
Parentage - SEA												
2022	86	78	73	65	56	56	63	65	71	65	71	82
2023	68	69	77	73	69	84	85	83	82	83	81	93
2024	96	96	96	103	101	96	88	101	97	93	93	
MRJC	Jan	Feb	Mar	Apr	May	Jun	Jul	Aug	Sep	Oct	Nov	Dec
TOTAL - MRJC												
2022	4638	4544	4567	4548	4528	4570	4488	4616	4754	4761	4837	4820
2023	4686	4773	4873	4957	5025	5117	5150	5205	5358	5336	5570	5485
2024	5678	5809	5947	6143	6301	6268	6372	6558	6541	6504	6359	
Civil - MRJC												
2022	2007	1990	2016	2008	2026	2072	2049	2112	2158	2156	2218	2235
2023	2198	2241	2267	2297	2343	2428	2450	2519	2640	2612	2813	2831
2024	2947	3069	3131	3228	3418	3417	3478	3586	3548	3504	3403	
Domestic - MRJC												
2022	1727	1695	1748	1757	1724	1739	1675	1695	1779	1762	1769	1737
2023	1670	1702	1754	1800	1809	1810	1799	1799	1808	1787	1801	1728
2024	1776	1768	1802	1911	1891	1870	1888	1920	1950	1957	1921	
Probate - MRJC												
2022	460	452	418	373	368	350	368	383	386	393	415	422
2023	409	411	410	428	433	435	451	453	460	480	484	461
2024	492	505	523	532	518	503	530	539	539	551	553	
Guardianship - MRJC												
2022	193	158	152	190	197	200	188	211	205	214	204	204
2023	184	203	225	213	215	219	222	212	229	229	235	227
2024	232	247	259	245	233	235	249	272	274	273	264	
Adoption - MRJC												
2022	83	82	75	78	74	75	73	80	87	90	87	78
2023	79	77	80	87	86	81	84	86	79	85	83	78
2024	78	74	73	70	75	77	76	78	75	76	75	
Parentage - MRJC												
2022	168	167	158	142	139	134	135	135	139	146	144	144
2023	146	139	137	132	139	144	144	136	142	143	154	160
2024	153	146	159	157	166	166	151	163	155	143	143	
SEA/MRJC	Jan	Feb	Mar	Apr	May	Jun	Jul	Aug	Sep	Oct	Nov	Dec
2022	12776	12655	12669	12584	12434	12710	12587	12855	13214	13328	13447	13471
2023	13151	13432	13637	13732	13840	14118	14203	14456	14824	14900	15385	15082
2024	15374	15636	15772	16137	16498	16553	16511	17050	17095	17094	16673	

Pending caseload = cases remain active and unresolved at the end of reporting period, excluding cases on suspense status (in arbitration, appeal).

Table 5. Age of Pending Cases

SEA	Nov 2023	Dec 2023	Jan 2024	Feb 2024	Mar 2024	Apr 2024	May 2024	Jun 2024	Jul 2024	Aug 2024	Sep 2024	Oct 2024	Nov 2024
Civil - SEA													
Median Age (50 th percentile) *	142	145	143	142	145	145	143	137	133	136	140	140	144
# of Cases in Age Interval													
0 - 120 days (0 - 4 months)	2373	2284	2332	2324	2265	2423	2528	2633	2662	2673	2672	2654	2542
121 - 240 days (5 - 8 months)	1140	1224	1186	1295	1346	1377	1457	1454	1375	1508	1549	1611	1562
241 - 360 days (9 - 12 months)	725	709	718	714	744	763	737	803	799	863	872	850	802
361 - 540 days (13 - 18 months)	572	522	499	485	468	460	498	497	457	473	493	522	516
541 - 720 days (19 - 24 months)	240	255	265	255	242	237	233	206	188	184	185	168	200
> 720 days (> 24 months)	263	250	234	233	235	197	210	152	164	164	145	137	128
Domestic - SEA													
Median Age (50 th percentile) *	143	152	155	157	154	148	136	139	141	138	144	143	151
# of Cases in Age Interval													
0 - 120 days (0 - 4 months)	1242	1109	1098	1111	1157	1267	1279	1274	1239	1242	1257	1224	1168
121 - 240 days (5 - 8 months)	648	689	750	744	722	636	610	617	654	737	736	736	717
241 - 360 days (9 - 12 months)	413	396	399	393	381	395	422	426	399	378	354	369	397
361 - 540 days (13 - 18 months)	246	212	218	229	237	216	217	227	224	235	243	228	222
> 540 days (> 18 months)	260	270	274	274	265	271	257	250	246	252	242	237	230
Probate - SEA													
Median Age (50 th percentile) *	568	605	586	568	621	624	647	663	694	690	679	667	717
# of Cases in Age Interval													
0 - 120 days (0 - 4 months)	241	212	251	268	233	256	234	232	215	226	237	248	226
121 - 240 days (5 - 8 months)	111	114	106	113	119	108	112	105	96	102	104	113	97
241 - 360 days (9 - 12 months)	93	101	98	99	89	93	90	88	101	88	94	87	84
361 - 540 days (13 - 18 months)	97	89	107	111	116	104	113	117	105	122	120	129	135
> 540 days (> 18 months)	580	595	604	614	631	630	641	654	678	688	705	719	740
Guardianship - SEA													
Median Age (50 th percentile) *	461	499	552	581	583	642	673	703	737	762	776	645	680
# of Cases in Age Interval													
0 - 120 days (0 - 4 months)	100	99	96	89	104	100	103	101	93	94	90	102	96
121 - 240 days (5 - 8 months)	23	17	20	25	20	18	14	14	18	20	21	23	25
241 - 360 days (9 - 12 months)	20	25	11	9	9	10	11	13	11	12	8	10	13
361 - 540 days (13 - 18 months)	29	25	24	23	17	14	13	13	7	8	15	14	13
> 540 days (> 18 months)	146	148	155	159	164	159	162	161	166	168	167	168	169
Adoption - SEA													
Median Age (50 th percentile) *	653	787	608	539	559	643	674	724	745	778	817	847	1007
# of Cases in Age Interval													
0 - 120 days (0 - 4 months)	35	24	33	45	44	42	37	28	31	31	30	30	26
121 - 240 days (5 - 8 months)	11	11	12	14	15	11	11	15	13	15	13	8	7
241 - 360 days (9 - 12 months)	10	12	12	8	6	4	6	7	9	8	6	11	9
361 - 540 days (13 - 18 months)	20	15	12	15	16	13	12	13	12	6	9	8	8
> 540 days (> 18 months)	96	97	86	82	84	87	89	89	89	94	90	91	89
Parentage - SEA													
Median Age (50 th percentile) *	157	144	135	141	136	125	136	128	122	111	134	143	164
# of Cases in Age Interval													
0 - 120 days (0 - 4 months)	32	43	42	45	45	50	47	46	42	51	45	38	34
121 - 240 days (5 - 8 months)	22	23	23	21	22	24	26	23	21	21	23	29	28
241 - 360 days (9 - 12 months)	13	12	16	18	14	12	14	13	12	14	15	14	17
361 - 540 days (13 - 18 months)	12	13	14	8	10	11	10	9	8	11	9	7	8
> 540 days (> 18 months)	2	2	1	4	5	6	4	5	5	4	5	5	6

*Age of active pending cases is time elapsed from filing date to the end of the reporting period, minus any suspense time (in appeal, stay, mediation, arbitration) if applicable. The "median age" indicates the age of half (50%) of the pending cases (half are more, half are less) than the number of days indicated in the table.

"Civil" includes all civil actions (including RALJ), except "Matters Filed with Clerk" (Petition for Order Granting Judgment on Confession of Judgment, Tax Warrants, Abstract of Judgment, Foreign Judgment, and Transcript of Judgment), Domestic, Probate, Guardianship, Adoption, and Paternity cases.

Table 5. Age of Pending Cases (cont.)

MRJC	Nov 2023	Dec 2023	Jan 2024	Feb 2024	Mar 2024	Apr 2024	May 2024	Jun 2024	Jul 2024	Aug 2024	Sep 2024	Oct 2024	Nov 2024
Civil - MRJC													
Median Age (50 th percentile) *	116	123	119	116	117	106	115	117	115	128	132	129	136
# of Cases in Age Interval													
0 - 120 days (0 - 4 months)	1426	1395	1490	1565	1601	1727	1780	1761	1790	1718	1676	1647	1558
121 - 240 days (5 - 8 months)	543	614	678	732	799	788	870	941	943	1101	1089	1044	1005
241 - 360 days (9 - 12 months)	292	320	297	277	274	317	369	411	444	443	461	496	484
361 - 540 days (13 - 18 months)	207	171	175	185	173	168	164	174	180	193	210	219	253
541 - 720 days (19 - 24 months)	85	89	87	86	88	78	87	70	63	70	60	51	58
> 720 days (> 24 months)	260	242	220	224	196	150	148	60	58	61	52	47	45
Domestic- MRJC													
Median Age (50 th percentile) *	156	164	170	171	167	162	150	157	154	158	160	162	171
# of Cases in Age Interval													
0 - 120 days (0 - 4 months)	725	667	685	683	720	816	804	790	785	764	798	795	751
121 - 240 days (5 - 8 months)	476	451	462	462	420	404	419	417	443	498	489	516	489
241 - 360 days (9 - 12 months)	258	273	282	269	307	299	289	287	272	269	286	275	311
361 - 540 days (13 - 18 months)	128	118	127	144	148	175	166	164	172	174	174	168	166
> 540 days (> 18 months)	214	219	220	210	207	217	213	212	216	215	203	203	204
Probate – MRJC													
Median Age (50 th percentile) *	429	490	470	477	479	454	521	581	540	551	581	577	601
# of Cases in Age Interval													
0 - 120 days (0 - 4 months)	127	100	114	124	138	156	140	119	125	131	129	141	137
121 - 240 days (5 - 8 months)	55	48	51	54	47	43	41	44	59	56	51	44	44
241 - 360 days (9 - 12 months)	38	47	54	45	43	32	30	34	28	34	31	32	36
361 - 540 days (13 - 18 months)	45	47	47	52	53	53	51	47	53	47	48	43	38
> 540 days (> 18 months)	219	219	226	230	242	248	256	259	265	271	280	291	298
Guardianship - MRJC													
Median Age (50 th percentile) *	247	280	257	234	214	237	305	298	267	214	215	228	267
# of Cases in Age Interval													
0 - 120 days (0 - 4 months)	87	78	89	100	106	95	80	80	93	112	114	106	93
121 - 240 days (5 - 8 months)	30	26	26	25	27	28	27	29	29	29	26	33	35
241 - 360 days (9 - 12 months)	23	23	19	21	19	17	19	16	15	18	14	16	16
361 - 540 days (13 - 18 months)	22	28	14	16	23	20	19	21	22	20	23	19	18
> 540 days (> 18 months)	73	72	84	85	84	85	88	89	90	93	97	99	102
Adoption – MRJC													
Median Age (50 th percentile) *	1136	1389	1415	1460	1473	1521	1319	1293	1352	1299	1385	1360	1446
# of Cases in Age Interval													
0 - 120 days (0 - 4 months)	12	8	8	5	8	7	11	13	11	12	9	7	7
121 - 240 days (5 - 8 months)	7	7	6	7	5	3	3	1	2	3	5	8	6
241 - 360 days (9 - 12 months)	1	0	2	3	3	4	4	4	3	3	2	0	1
361 - 540 days (13 - 18 months)	11	9	8	6	5	1	2	3	3	4	5	7	5
> 540 days (> 18 months)	52	54	54	53	52	55	55	56	56	56	54	54	56
Parentage – MRJC													
Median Age (50 th percentile) *	151	161	170	168	168	175	170	178	139	137	144	154	164
# of Cases in Age Interval													
0 - 120 days (0 - 4 months)	62	65	57	53	48	47	68	69	64	74	61	56	57
121 - 240 days (5 - 8 months)	46	41	44	44	55	53	46	39	37	41	54	55	49
241 - 360 days (9 - 12 months)	22	27	25	26	32	31	27	31	27	22	16	14	19
361 - 540 days (13 - 18 months)	12	16	15	15	15	16	17	17	16	18	18	12	13
> 540 days (> 18 months)	12	11	12	8	9	10	8	10	7	8	6	6	5

*Age of active pending cases is time elapsed from filing date to the end of the reporting period, minus any suspense time (in appeal, stay, mediation, arbitration) if applicable. The “median age” indicates the age of half (50%) of the pending cases (half are more, half are less) than the number of days indicated in the table.

“Civil” includes all civil actions (including RALJ), except “Matters Filed with Clerk” (Petition for Order Granting Judgment on Confession of Judgment, Tax Warrants, Abstract of Judgment, Foreign Judgment, and Transcript of Judgment), Domestic, Probate, Guardianship, Adoption, and Parentage cases.

Table 6. SEA/MRJC Filings, Resolutions, and Pending Caseload as a Percentage of All Cases

	Nov 2023	Dec 2023	Jan 2024	Feb 2024	Mar 2024	Apr 2024	May 2024	Jun 2024	Jul 2024	Aug 2024	Sep 2024	Oct 2024	Nov 2024
Total Filings	3208	2822	3274	3343	3397	3491	3670	3243	3533	3338	3471	3812	2948
SEA - # of Cases Filed	1964	1734	1988	1961	2004	2065	2243	2016	2054	2049	2079	2300	1820
MRJC - # of Cases Filed	1244	1088	1286	1382	1393	1426	1427	1227	1479	1289	1392	1512	1128
SEA %	61%	61%	61%	59%	59%	59%	61%	62%	58%	61%	60%	60%	62%
MRJC %	39%	39%	39%	41%	41%	41%	39%	38%	42%	39%	40%	40%	38%
Total Resolutions	2827	2749	3068	3038	3325	3047	3306	2981	3308	3106	3194	3596	3036
SEA - # of Cases Resolved	1770	1740	1934	1837	2033	1854	2014	1805	2034	1928	1891	2124	1858
MRJC - # of Cases Resolved	1057	1009	1134	1201	1292	1193	1292	1176	1274	1178	1303	1472	1178
SEA %	63%	63%	63%	60%	61%	61%	61%	61%	61%	62%	59%	59%	61%
MRJC %	37%	37%	37%	40%	39%	39%	39%	39%	39%	38%	41%	41%	39%
Total Pending Cases	15385	15082	15374	15636	15772	16137	16498	16553	16511	17050	17095	17094	16673
SEA - # of Cases Pending	9815	9597	9696	9827	9825	9994	10197	10285	10139	10492	10554	10590	10314
MRJC - # of Cases Pending	5570	5485	5678	5809	5947	6143	6301	6268	6372	6558	6541	6504	6359
SEA %	64%	64%	63%	63%	62%	62%	62%	62%	61%	62%	62%	62%	62%
MRJC %	36%	36%	37%	37%	38%	38%	38%	38%	39%	38%	38%	38%	38%

All civil actions (including RALJ), except "Matters Filed with Clerk" (Petition for Order Granting Judgment on Confession of Judgment, Tax Warrants, Abstract of Judgment, Foreign Judgment, and Transcript of Judgment), Domestic, Probate, Guardianship, Adoption, and Parentage cases.

Appendix Glossary and Definition

Active Status

A case is active if it is not on suspense status (see Suspense Status).

Adoption and Parentage Cases (case type 5)

ADP - Adoption
CFI - Confidential Intermediary
CHN - Confidential Change of Name
DIP - Disestablishment of Parentage
MDS - Modification/Support Only
MOD - Modification
MSC - Miscellaneous
OAA - Open Adoption Agreement
PAD - De Facto Parentage
PAG - Pre Birth Establish Parentage Genetic
PAS - Establish Parentage Gestational Surrogacy
PAT - Parentage
PPR - Initial Pre Placement Report
PRC - Parentage Rescission/Challenge
PUR - Parentage (URES/AUIFSA)
REL - Relinquishment
ROB - Relocation Objection
TER - Termination of Parental Rights

Case

A case is defined as a filing with an assigned case number.

Civil Cases (case type 2, no RALJ)

ALR - Administrative Law Review
ALRLI - L&I Administrative Law Review
AOD - Assurance of Discontinuance
ASB - Asbestos
ASP - Asbestos Personal Injury
ASW - Asbestos Wrongful Death
BAT - Petition to Appeal/Amend Ballot Title
CAA - Motion to Confirm/Compel Arbitration Award
CFJ - Petition for Order Granting Judgment on Confession of Judgment
CHN - Non Confidential Change of Name
COL - Collection
COM - Commercial
CON - Condemnation
CRP - Certificate of Restoration of Opportunity
CRR - Petition for Certificate of Rehabilitation
DOL - Appeal Licensing Revocation
DSF - Notice of Deposit of Surplus Funds from Trustee's Sale of Real Property
DVP - Domestic Violence
ECP - Enforcement of Canadian Protection Order
EOM - Emancipation of Minor
FOR - Foreclosure
FPO - Foreign Protection Order
FVL - Motion to Show Cause /Fruivolous Lien
HAR - Unlawful Harassment
HSI - Application for Health & Safety Inspection
INJ - Injunction
IPL - Complaint for Interpleader
LUP - Land Use Petition
MAL - Other Malpractice
MED - Medical Malpractice
MER - Meretricious Relationships
MHA - Malicious Harassment
MSC - Miscellaneous
MST - Minor Settlement
MWP - Minor Work Permit
NJF - Non Judicial Filing
OSS - Petition to Issue Out of State Subpoena
PBC - Petition for Birth Certificate Change
PBJ - Petition for Justification /Bail Bond Company
PCC - Petition for Civil Commitment

PFA - Property Fairness Act
PIN - Personal Injury
PPT - Petition for Perpetuation of Testimony
PRA - Public Records Act
PRG - Property Damage /Gangs
PRP - Property Damage
PVO - Petition for Vehicle Ownership
QTI - Quiet Title
RCV - Petition to Appoint Receiver
RDR - Relief from Duty to Register
RFR - Restoration of Firearms Rights
RRC - Remove Restricted Covenant
SCA - Small Claims Appeal
SDR - School District /Required Action Plan
SER - Subdivision Election Process Law Review
SPC - Seizure of Property From Commission of a Crime
SPR - Seizure of Property Resulting From a Crime
STK - Stalking Protection
SXP - Sexual Assault Protection
TMV - Tort /Motor Vehicle
TSS - Petition for Approval of Transfer of Structured Settlement
TTO - Tort /Other
UND - Unlawful Detainer
VAP - Vulnerable Adult Protection Order
VEP - Voter Election Process Law Review
VVT - Victims of Motor Vehicle Theft /Civil Action
WDE - Wrongful Death
WHC - Writ of Habeas Corpus
WMW - Miscellaneous Writs
WRM - Writ of Mandamus
WRR - Writ of Restitution
WRV - Writ of Review
XRP - Extreme Risk Protection Order

Completion

A case is completed if dispositive document is filed with the court following resolution.

Domestic Cases (case type 3)

CIR - Committed Intimate Relationship
CUS - Child Custody
DIC - Dissolution w/ Children
DIN - Dissolution no Children
DIS - Dissolution
DPC - Dissolution of Domestic Partnership w/ Children
DPN - Dissolution of Domestic Partnership /No Children
FJU - Out of State Support Registration /Foreign Judgment
INC - Annulment /Inv of Marriage w/ Children
IND - Annulment /Inv of Domestic Partnership w/ Children
INP - Invalidity, Domestic Partnership
INV - Annulment /Invalidity
MDS - Modification/Support Only
MOD - Modification
MSC - Miscellaneous
MWA - Mandatory Wage Assignment
OSC - Out of State Custody
PPS - Parenting Plan / Child Support
PSO - Petition for Entry of KC Support Order
RCV - Relative Child Visitation
RIC - Reciprocal, Resp in County
ROB - Relocation /Objection
ROC - Reciprocal, Resp out of County
RVC - Relative Child Visits
SDC - Legal Separation, Domestic Partnership w/ Children
SEC - Legal Separation w/ Children
SEP - Legal Separation
SPD - Legal Separation, Domestic Partnership /No Children
TSS - Structured Settlement

EFC - Extended Foster Care, Dependency
GFC - Guardianship Foster Children
RPR - Reinstatement of Parental Rights
RVS - Relative Visitation
TRU - Truancy
VYG - Vulnerable Youth Guardianship

Probate and Guardianship Cases (case type 4)

ABS - Absentee
AOS - Affidavit of Successor
ASE - Affidavit of Small Estate
DSC - Disclaimer
EST - Estate
FNW - Foreign Will
G/E - Guardianship/Estate
GDE - Guardianship of the Estate
GDN - Guardianship
GDP - Guardianship of the Person
LGD - Limited Guardianship
LGE - Limited Guardianship of the Estate
LGP - Limited Guardianship of the Person
MGD - Minor Guardianship
MSC - Miscellaneous
MST - Minor Settlement
NJB - Non Judicial Binding/TEDRA Agreement
NNC - Non Probate Notice to Creditor
POA - Petition for Relief (RCW 11.94) /Power of Attorney
RGR - Registration of Guardianship
RTR - Registration of Trust /Trust Situs
SNT - Special Needs Trust
TDR - Trust/Estate Dispute Resolution
TRS - Trust
WLL - Will Only

Resolution

A case is resolved if all issues in the complaint are fully adjudicated.

Suspended Case

A case is placed in suspense status from active status during the reporting period.

Suspense Status

A case is on suspense status if it is on warrant, appeal, stay, mediation, arbitration (“Deferred Prosecution” is not a suspense status, but is treated as a resolution).