



# King County

Department of Judicial Administration

*Catherine Cornwall*

*Director and Superior Court Clerk*

(206) 296-9300 (206) 296-0100 TTY/TDD

## King County Superior Court

# Quarterly Statistical Report

Third Quarter 2024

Department of Judicial Administration

Prepared by: Shiquan Liao, Ph.D., Statistician

*October 15, 2024*

**Report #: QTR-2024-Q3**

***Seattle:***

516 Third Avenue Room E609  
Seattle, WA 98104-2386

***Regional Justice Center:***

401 Fourth Avenue North Room 2C  
Kent, WA 98032-4429

***Juvenile Division:***

1211 East Alder Room 3015  
Seattle, WA 98122-5598

# Quarterly Report Summary

## King County Superior Court

- **Criminal Cases.** The criminal filings in the first three quarters were 3,907 cases, as the same level as in 2023 (+0.1%). MRJC accounted for 44% of the criminal cases filed in 2024. The resolutions of criminal cases in 2024 matched the filing pace, totaling 3,942 cases. The pending criminal caseload has stayed around 4,000 cases in the last 12 months. At the end of September 2024, 4,010 criminal cases (excluding RALJ) remained active. Of the 4,010 pending criminal cases, 41% were the MRJC cases.
- **Civil Cases.** Filings in civil cases (case type 2) continued an upwards trend in the last 5 quarters. The filings in case type 2 (general civil) in 2024 were significantly higher than in 2023, showing a 31% increase from 2023. The increase in civil filings was primarily due to the rise in unlawful detainer cases and civil protection petitions. MRJC accounted for 43% of the civil cases filed in 2024. The civil resolutions were lower than the filing volume in the same period, resulting an increase in active civil caseload. The pending civil caseload was 9,429 cases at the end of September 2024, 1,814 cases more than a year ago (+23.8%). The MRJC had 37% of the pending civil caseload at the end of September of 2024.
- **Domestic Cases.** Domestic case (case type 3) filings in the first 3 quarters of 2024 were comparable with that in 2023, showing only 3% increase. A total of 5,065 domestic cases were filed in 2024, and 38% were filed in the MRJC. The resolutions of domestic cases fell behind the filing volume in 2024. At the end of September 2024, the pending domestic caseload was 4,782 cases, with 41% being the MRJC cases.
- **ITA Cases.** The filings of ITA cases in 2024 remained at a high level, but seemed to have reached a plateau. A total of 4,115 ITA cases were filed in the 9 months of 2024, just slightly lower than the same period in 2023 (-2.0%). There were 505 ITA cases remaining to be adjudicated at the end of September 2024.
- **Juvenile Dependency/Termination (DEP/TER) and At-risk Youth (ARY)/Child-in-Need of Service (CHINS) Cases.** In 2024, termination filings were down about 37% from 2023. On the other hand, filings in dependency, ARY/CHINS/others were up 34%, and 36% respectively from 2023. At the end of September 2024, the numbers of cases pending disposition in the non-Offense juvenile categories were: 296 dependency cases, 92 termination cases, 157 ARY/CHINS/Other cases, and 1,829 truancy cases.
- **Juvenile Offense Cases.** The juvenile offense filings in 2024 increased significantly from 2023, with 691 juvenile offense cases filed in the 9 months of 2024 and 27% increase from the same time in 2023. The resolution pace for juvenile offense cases did not match the filing pace in the year. At the end of September 2024, there were 408 pending juvenile offense cases.
- **Pro Tem Use.** In the first three quarter of 2024, the daily Pro Tem use by the court was 4.2 FTEs, 5.5 FTEs, and 3.3 FTEs on average, respectively.
- **Post-resolution Modifications (Table 1-A).** In 2024, there were 367 post-resolution modifications filed (both parenting plan and relocation modifications) year-to-date.
- **Active re-opened cases and family law modification cases (Table 4-A).** At the end of September 2024, 931 re-opened cases and 379 family law modification cases remained active.

Table 1. Year-to-Date Filing Activity  
King County Superior Court

| Reporting Category                             | Year-to-Date (Jan – Sep)<br>and Annual Filing Activity <sup>(1)</sup> |       |       |       |       | 2024-2023 change<br>(+ means “increase”) |            | % of<br>2024 Total<br>Filing <sup>(2)</sup> |
|--|---|-------|-------|-------|-------|--|------------|---|
|  | 2020  | 2021  | 2022  | 2023  | 2024  | Cases                                    | Percentage |   |
| <b>Total (incl. RALJ)</b>                      |   |       |       |       |       |  |            |   |
| Year-to-Date Filing                            | 32073   | 30824 | 33545 | 36812 | 41717 | +4905                                    | +13.3%     |   |
| Annual Filing                                  | 43103   | 40249 | 44424 | 49172 |       |  |            |   |
| <b>Criminal (excl. RALJ)</b>                   |   |       |       |       |       |  |            |   |
| Year-to-Date Filing                            | 4356  | 3449  | 3658  | 3903  | 3907  | +4                                       | +0.1%      | 9.4%  |
| Annual Filing                                  | 5877  | 4658  | 4956  | 4896  |       |  |            |   |
| <b>Civil (excl. RALJ)</b>                      |   |       |       |       |       |  |            |   |
| Year-to-Date Filing                            | 11511   | 10550 | 11857 | 14086 | 18446 | +4360                                    | +31.0%     | 44.2%                                       |
| Annual Filing                                  | 15352   | 13624 | 15749 | 19776 |       |  |            |   |
| <b>Domestic</b>                                |   |       |       |       |       |  |            |   |
| Year-to-Date Filing                            | 4589  | 4835  | 4651  | 4917  | 5065  | +148                                     | +3.0%      | 12.1%                                       |
| Annual Filing                                  | 6163  | 6184  | 5999  | 6369  |       |  |            |   |
| <b>Probate</b>                                 |   |       |       |       |       |  |            |   |
| Year-to-Date Filing                            | 4925  | 5876  | 5926  | 5738  | 5937  | +199                                     | +3.5%      | 14.2%                                       |
| Annual Filing                                  | 6766  | 7478  | 7747  | 7565  |       |  |            |   |
| <b>Guardianship</b>                            |   |       |       |       |       |  |            |   |
| Year-to-Date Filing                            | 529   | 600   | 720   | 798   | 767   | -31                                      | -3.9%      | 1.8%  |
| Annual Filing                                  | 706   | 725   | 1057  | 958   |       |  |            |   |
| <b>Adoption</b>                                |   |       |       |       |       |  |            |   |
| Year-to-Date Filing                            | 294   | 267   | 275   | 246   | 208   | -38                                      | -15.4%     | 0.5%  |
| Annual Filing                                  | 431   | 347   | 363   | 318   |       |  |            |   |
| <b>Parentage</b>                               |   |       |       |       |       |  |            |   |
| Year-to-Date Filing                            | 244   | 309   | 250   | 235   | 285   | +50                                      | +21.3%     | 0.7%  |
| Annual Filing                                  | 340   | 401   | 347   | 333   |       |  |            |   |
| <b>ITA – Civil Commitment</b>                  |   |       |       |       |       |  |            |   |
| Year-to-Date Filing                            | 3791  | 3918  | 4277  | 4200  | 4115  | -85                                      | -2.0%      | 9.9%  |
| Annual Filing                                  | 5131  | 5159  | 5665  | 5541  |       |  |            |   |
| <b>Juvenile Dependency (DEP)</b>               |   |       |       |       |       |  |            |   |
| Year-to-Date Filing                            | 344   | 307   | 310   | 239   | 321   | +82                                      | +34.3%     | 0.8%  |
| Annual Filing                                  | 435   | 361   | 377   | 302   |       |  |            |   |
| <b>Juvenile Termination (TER)</b>              |   |       |       |       |       |  |            |   |
| Year-to-Date Filing                            | 194   | 172   | 132   | 145   | 92    | -53                                      | -36.6%     | 0.2%  |
| Annual Filing                                  | 291   | 205   | 188   | 168   |       |  |            |   |
| <b>ARY/CHINS/OTHERS</b>                        |   |       |       |       |       |  |            |   |
| Year-to-Date Filing                            | 94  | 172   | 193   | 340   | 461   | +121                                     | +35.6%     | 1.1%  |
| Annual Filing                                  | 187   | 251   | 301   | 479   |       |  |            |   |
| <b>Juvenile Truancy</b>                        |   |       |       |       |       |  |            |   |
| Year-to-Date Filing                            | 493   | 4     | 871   | 1336  | 1314  | -22                                      | -1.6%      | 3.1%  |
| Annual Filing                                  | 501   | 61    | 1121  | 1560  |       |  |            |   |
| <b>Juvenile Offense</b>                        |   |       |       |       |       |  |            |   |
| Year-to-Date Filing                            | 631   | 278   | 346   | 543   | 691   | +148                                     | +27.3%     | 1.7%  |
| Annual Filing                                  | 788   | 356   | 500   | 723   |       |  |            |   |
| <b>Criminal RALJ</b>                           |   |       |       |       |       |  |            |   |
| Year-to-Date Filing                            | 48  | 37    | 37    | 38    | 56    | +18                                      | +47.4%     | 0.1%  |
| Annual Filing                                  | 63  | 49    | 53    | 58    |       |  |            |   |
| <b>Civil RALJ</b>                              |   |       |       |       |       |  |            |   |
| Year-to-Date Filing                            | 30  | 50    | 42    | 48    | 52    | +4                                       | +8.3%      | 0.1%  |
| Annual Filing                                  | 53  | 58    | 55    | 63    |       |  |            |   |
| <b>Matters Filed with Clerk <sup>(3)</sup></b> |   |       |       |       |       |  |            |   |
| Year-to-Date Filing                            | 2545  | 2130  | 3718  | 4292  | 3511  | -781                                     | -18.2%     |   |
| Annual Filing                                  | 2784  | 2882  | 5169  | 5464  |       |  |            |   |

(1) New filings only (based on filing date). (2) New filings of each reporting category as percentage of “Year-to-Date Filing”.

(3) “Matters Filed with Clerk” not included in the “Total”.

Chart 1-A. Quarterly Filing Activity  
Total Judicial Cases Only ("Matters Filed with Clerk" excluded)

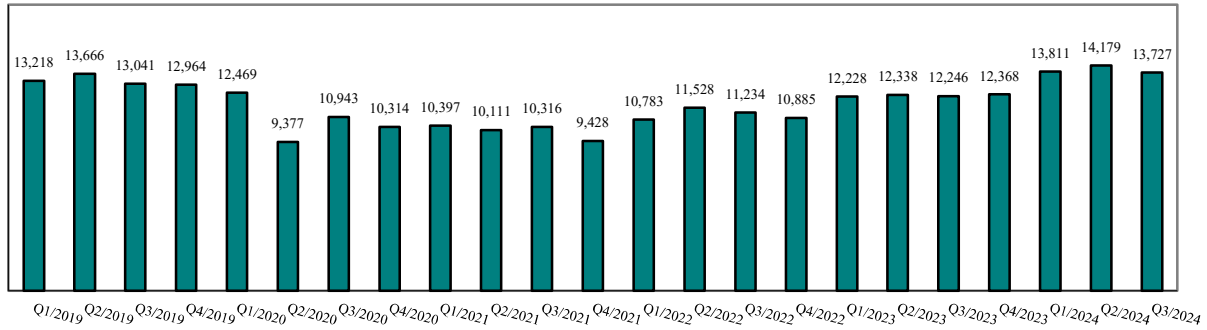


Chart 1-B. Quarterly Filings: Criminal and Juvenile Offense Cases

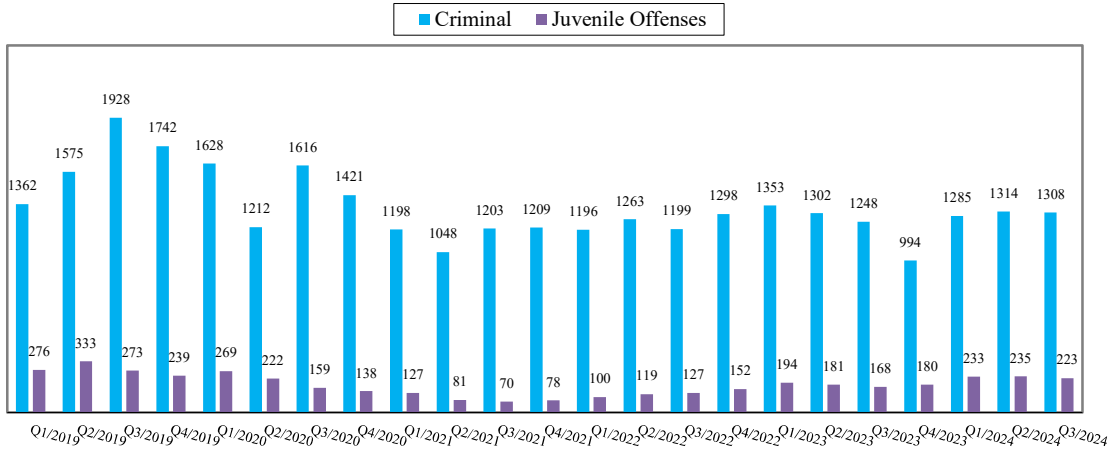
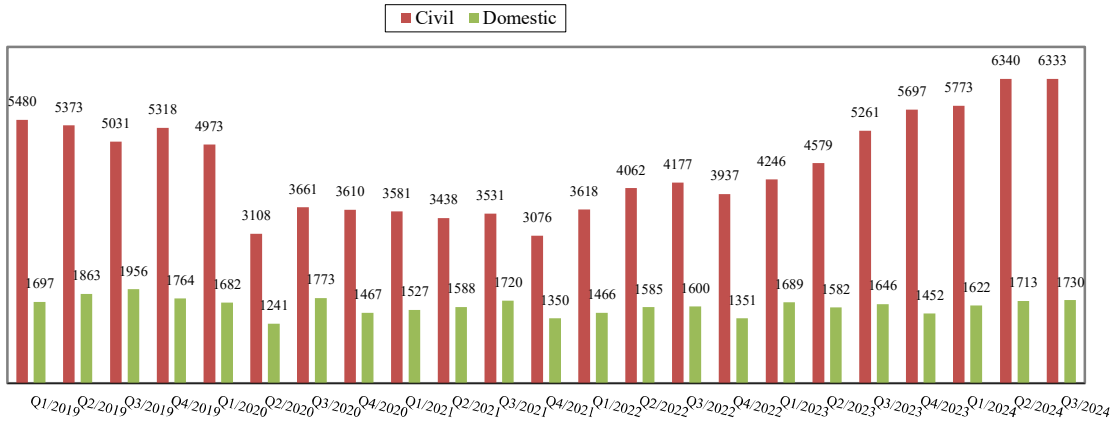


Chart 1-C. Quarterly Filings: Civil and Domestic Cases



\* Note: "Civil" is specifically defined in this report. The category of "Civil" does **not** include the following case types: domestic, probate, guardianship, adoption, Parentage, ITA (civil commitment), juvenile cases (dependency, at-risk youth, child-in-need of service), civil RALJ, and tax filings that don't require judicial resources ("matters filed with clerk").

Table 1-A. Post-Resolution Modifications Filed (Domestic and Parentage Cases)

|                      |           | 2022Q1     |            |            | 2022Q2     |            |            | 2022Q3     |            |            | 2022Q4     |            |            | Year 2022       |            |            |
|----------------------|-----------|------------|------------|------------|------------|------------|------------|------------|------------|------------|------------|------------|------------|-----------------|------------|------------|
| Location             | Case Type | DMOD       | DTBA       | Total      | DMOD       | DTBA       | Total      | DMOD       | DTBA       | Total      | DMOD       | DTBA       | Total      | DMOD            | DTBA       | Total      |
| KNT                  | Domestic  | 12         | 53         | 65         | 10         | 57         | 67         | 11         | 52         | 63         | 5          | 39         | 44         | 38              | 201        | 239        |
|                      | Parentage | 0          | 4          | 4          | 0          | 4          | 4          | 0          | 6          | 6          | 1          | 1          | 2          | 1               | 15         | 16         |
| <b>KNT Total</b>     |           | <b>12</b>  | <b>57</b>  | <b>69</b>  | <b>10</b>  | <b>61</b>  | <b>71</b>  | <b>11</b>  | <b>58</b>  | <b>69</b>  | <b>6</b>   | <b>40</b>  | <b>46</b>  | <b>39</b>       | <b>216</b> | <b>255</b> |
| SEA                  | Domestic  | 19         | 59         | 78         | 24         | 63         | 87         | 14         | 56         | 70         | 10         | 49         | 59         | 67              | 227        | 294        |
|                      | Parentage |            | 3          | 3          | 2          | 3          | 5          | 1          | 3          | 4          | 2          | 2          | 4          | 5               | 11         | 16         |
| <b>SEA Total</b>     |           | <b>19</b>  | <b>62</b>  | <b>81</b>  | <b>26</b>  | <b>66</b>  | <b>92</b>  | <b>15</b>  | <b>59</b>  | <b>74</b>  | <b>12</b>  | <b>51</b>  | <b>63</b>  | <b>72</b>       | <b>238</b> | <b>310</b> |
| <b>KNT/SEA Total</b> |           | <b>31</b>  | <b>119</b> | <b>150</b> | <b>36</b>  | <b>127</b> | <b>163</b> | <b>26</b>  | <b>117</b> | <b>143</b> | <b>18</b>  | <b>91</b>  | <b>109</b> | <b>111</b>      | <b>454</b> | <b>565</b> |
|                      |           | 2023Q1     |            |            | 2023Q2     |            |            | 2023Q3     |            |            | 2023Q4     |            |            | Year 2023       |            |            |
| Location             | Case Type | Relocation | Parent Mod | Total      | Relocation | Parent Mod | Total      | Relocation | Parent Mod | Total      | Relocation | Parent Mod | Total      | Relocation      | Parent Mod | Total      |
| KNT                  | Domestic  | 7          | 52         | 59         | 11         | 45         | 56         | 8          | 55         | 63         | 5          | 45         | 50         | 31              | 197        | 228        |
|                      | Parentage |            | 8          | 8          | 1          | 2          | 3          | 1          | 5          | 6          |            | 4          | 4          | 2               | 19         | 21         |
| <b>KNT Total</b>     |           | <b>7</b>   | <b>60</b>  | <b>67</b>  | <b>12</b>  | <b>47</b>  | <b>59</b>  | <b>9</b>   | <b>60</b>  | <b>69</b>  | <b>5</b>   | <b>49</b>  | <b>54</b>  | <b>33</b>       | <b>216</b> | <b>249</b> |
| SEA                  | Domestic  | 7          | 58         | 65         | 24         | 47         | 71         | 18         | 46         | 64         | 10         | 42         | 52         | 59              | 193        | 252        |
|                      | Parentage |            | 4          | 4          | 1          | 4          | 5          |            | 6          | 6          |            | 3          | 3          | 1               | 17         | 18         |
| <b>SEA Total</b>     |           | <b>7</b>   | <b>62</b>  | <b>69</b>  | <b>25</b>  | <b>51</b>  | <b>76</b>  | <b>18</b>  | <b>52</b>  | <b>70</b>  | <b>10</b>  | <b>45</b>  | <b>55</b>  | <b>60</b>       | <b>210</b> | <b>270</b> |
| <b>KNT/SEA Total</b> |           | <b>14</b>  | <b>122</b> | <b>136</b> | <b>37</b>  | <b>98</b>  | <b>135</b> | <b>27</b>  | <b>112</b> | <b>139</b> | <b>15</b>  | <b>94</b>  | <b>109</b> | <b>93</b>       | <b>426</b> | <b>519</b> |
|                      |           | 2024Q1     |            |            | 2024Q2     |            |            | 2024Q3     |            |            | 2024Q4     |            |            | Year 2024 (YTD) |            |            |
| Location             | Case Type | Relocation | Parent Mod | Total      | Relocation | Parent Mod | Total      | Relocation | Parent Mod | Total      | Relocation | Parent Mod | Total      | Relocation      | Parent Mod | Total      |
| KNT                  | Domestic  | 8          | 31         | 39         | 12         | 40         | 52         | 11         | 47         |            |            |            |            | 31              | 118        | 149        |
|                      | Parentage | 1          |            | 1          |            | 3          | 3          | 0          | 2          |            |            |            |            | 1               | 5          | 6          |
| <b>KNT Total</b>     |           | <b>9</b>   | <b>31</b>  | <b>40</b>  | <b>12</b>  | <b>43</b>  | <b>55</b>  | <b>11</b>  | <b>49</b>  |            |            |            |            | <b>32</b>       | <b>123</b> | <b>155</b> |
| SEA                  | Domestic  | 14         | 51         | 65         | 19         | 59         | 78         | 10         | 44         |            |            |            |            | 43              | 154        | 197        |
|                      | Parentage | 0          | 6          | 6          | 2          | 1          | 3          | 1          | 5          |            |            |            |            | 3               | 12         | 15         |
| <b>SEA Total</b>     |           | <b>14</b>  | <b>57</b>  | <b>71</b>  | <b>21</b>  | <b>60</b>  | <b>81</b>  | <b>11</b>  | <b>49</b>  |            |            |            |            | <b>46</b>       | <b>166</b> | <b>212</b> |
| <b>KNT/SEA Total</b> |           | <b>23</b>  | <b>88</b>  | <b>111</b> | <b>33</b>  | <b>103</b> | <b>136</b> | <b>22</b>  | <b>98</b>  |            |            |            |            | <b>78</b>       | <b>289</b> | <b>367</b> |

Table 2. Number of Cases Resolved and Resolution Category (%)  
King County Superior Court

| Reporting Category  | Q4/22        | Q1/23        | Q2/23        | Q3/23        | Q4/23        | Q1/24        | Q2/24        | Q3/24        |
|---|--------------|--------------|--------------|--------------|--------------|--------------|--------------|--------------|
| <b>Total Resolutions<br/>(excl. "Matters Filed with Clerk")</b> | <b>10218</b> | <b>11192</b> | <b>11564</b> | <b>11615</b> | <b>11720</b> | <b>12808</b> | <b>12909</b> | <b>13202</b> |
| <b>Criminal (excl. RALJ): # Resolved</b>                        | <b>1121</b>  | <b>1273</b>  | <b>1309</b>  | <b>1338</b>  | <b>1205</b>  | <b>1291</b>  | <b>1296</b>  | <b>1355</b>  |
| Resolved by Jury Trial  | 2.9%         | 2.3%         | 1.8%         | 1.4%         | 2.3%         | 2.2%         | 1.5%         | 2.3%         |
| Resolved by Non-Jury Trial                                      | 0.3%         | 0.1%         | 0.4%         | 0.9%         | 0.2%         | 0.1%         | 0.7%         | 0.1%         |
| Resolved by Guilty Plea   | 67.6%        | 65.8%        | 70.7%        | 67.6%        | 66.0%        | 64.4%        | 68.4%        | 72.0%        |
| Dismissal   | 28.7%        | 31.7%        | 26.7%        | 30.0%        | 30.8%        | 32.9%        | 29.2%        | 23.5%        |
| Others  | 0.4%         | 0.2%         | 0.4%         | 0.1%         | 0.7%         | 0.3%         | 0.3%         | 2.1%         |
| <b>Civil: # Resolved</b>  | <b>3637</b>  | <b>4000</b>  | <b>4383</b>  | <b>4747</b>  | <b>4917</b>  | <b>5517</b>  | <b>5427</b>  | <b>5871</b>  |
| Resolved by Jury Trial  | 0.2%         | 0.3%         | 0.4%         | 0.3%         | 0.3%         | 0.3%         | 0.2%         | 0.1%         |
| Resolved by Non-Jury Trial                                      | 0.7%         | 0.5%         | 0.2%         | 0.2%         | 0.3%         | 0.2%         | 0.3%         | 0.2%         |
| Summary Judgment  | 1.4%         | 1.3%         | 1.2%         | 0.7%         | 1.1%         | 1.0%         | 1.0%         | 1.3%         |
| Default/ Uncontested  | 48.0%        | 45.3%        | 46.0%        | 52.8%        | 51.5%        | 49.2%        | 50.7%        | 49.4%        |
| Arbitration   | 3.5%         | 2.7%         | 3.1%         | 1.4%         | 2.3%         | 1.4%         | 1.5%         | 1.3%         |
| Settlement/Dismissal  | 44.4%        | 46.9%        | 43.6%        | 41.3%        | 41.0%        | 40.5%        | 38.9%        | 42.7%        |
| Closure by Clerk  | 1.2%         | 1.9%         | 4.1%         | 2.7%         | 2.6%         | 6.6%         | 6.8%         | 4.2%         |
| Others  | 0.6%         | 1.3%         | 1.3%         | 0.7%         | 0.8%         | 0.8%         | 0.6%         | 0.7%         |
| <b>Domestic: # Resolved</b>                                     | <b>1419</b>  | <b>1452</b>  | <b>1564</b>  | <b>1488</b>  | <b>1534</b>  | <b>1513</b>  | <b>1571</b>  | <b>1592</b>  |
| Resolved by Trial   | 4.8%         | 4.7%         | 3.8%         | 4.2%         | 5.6%         | 4.0%         | 5.9%         | 5.1%         |
| Default/ Uncontested  | 6.8%         | 7.0%         | 8.6%         | 10.2%        | 8.0%         | 8.7%         | 6.5%         | 9.3%         |
| Settlement /Dismissal   | 86.8%        | 86.4%        | 86.6%        | 84.2%        | 85.6%        | 86.3%        | 86.6%        | 83.9%        |
| Closure by Clerk  | 1.3%         | 1.5%         | 0.9%         | 1.1%         | 0.5%         | 0.8%         | 0.8%         | 1.4%         |
| Others  | 0.4%         | 0.4%         | 0.1%         | 0.3%         | 0.3%         | 0.3%         | 0.2%         | 0.3%         |
| <b>Probate: # Resolved</b>                                      | <b>1721</b>  | <b>2026</b>  | <b>1852</b>  | <b>1656</b>  | <b>1749</b>  | <b>2002</b>  | <b>2002</b>  | <b>1751</b>  |
| Personal Rep. Appointed   | 69.2%        | 68.9%        | 68.6%        | 67.3%        | 69.1%        | 68.7%        | 69.1%        | 69.5%        |
| Dismissal   | 0.9%         | 4.6%         | 3.5%         | 4.9%         | 6.1%         | 4.1%         | 3.2%         | 4.6%         |
| Closure by Clerk  | 0.0%         | 0.0%         | 0.1%         | 0.4%         | 0.0%         | 0.0%         | 0.0%         | 0.1%         |
| Others  | 29.9%        | 26.5%        | 27.9%        | 27.4%        | 24.8%        | 27.2%        | 27.8%        | 25.8%        |
| <b>Guardianship: # Resolved</b>                                 | <b>209</b>   | <b>226</b>   | <b>248</b>   | <b>221</b>   | <b>233</b>   | <b>238</b>   | <b>252</b>   | <b>207</b>   |
| Guardian Appointed  | 70.8%        | 55.3%        | 57.3%        | 57.0%        | 52.4%        | 63.4%        | 66.3%        | 66.2%        |
| Dismissal   | 13.9%        | 27.4%        | 24.2%        | 25.3%        | 37.3%        | 27.7%        | 16.3%        | 18.4%        |
| Closure by Clerk  | 0.0%         | 0.0%         | 0.0%         | 0.0%         | 0.0%         | 0.0%         | 0.0%         | 0.0%         |
| Others  | 15.3%        | 17.3%        | 18.5%        | 17.6%        | 10.3%        | 8.8%         | 17.5%        | 15.5%        |
| <b>Adoption: # Resolved</b>                                     | <b>100</b>   | <b>75</b>    | <b>89</b>    | <b>84</b>    | <b>73</b>    | <b>63</b>    | <b>71</b>    | <b>71</b>    |
| Resolved by Trial   | 0.0%         | 0.0%         | 0.0%         | 0.0%         | 1.4%         | 0.0%         | 0.0%         | 0.0%         |
| Uncontested   | 1.0%         | 0.0%         | 2.2%         | 0.0%         | 0.0%         | 0.0%         | 0.0%         | 0.0%         |
| Settlement /Dismissal   | 99.0%        | 100.0%       | 92.1%        | 94.0%        | 98.6%        | 88.9%        | 98.6%        | 94.4%        |
| Closure by Clerk  | 0.0%         | 0.0%         | 4.5%         | 6.0%         | 0.0%         | 11.1%        | 1.4%         | 5.6%         |
| Others  | 0.0%         | 0.0%         | 1.1%         | 0.0%         | 0.0%         | 0.0%         | 0.0%         | 0.0%         |
| <b>Parentage: # Resolved</b>                                    | <b>76</b>    | <b>80</b>    | <b>71</b>    | <b>81</b>    | <b>64</b>    | <b>74</b>    | <b>97</b>    | <b>97</b>    |
| Resolved by Trial   | 5.3%         | 1.3%         | 4.2%         | 3.7%         | 12.5%        | 6.8%         | 7.2%         | 3.1%         |
| Summary Judgment  | 31.6%        | 41.3%        | 32.4%        | 39.5%        | 20.3%        | 31.1%        | 34.0%        | 36.1%        |
| Default/ Uncontested  | 19.7%        | 12.5%        | 15.5%        | 21.0%        | 18.8%        | 17.6%        | 15.5%        | 9.3%         |
| Settlement/Dismissal  | 43.4%        | 41.3%        | 47.9%        | 34.6%        | 46.9%        | 43.2%        | 43.3%        | 45.4%        |
| Closure by Clerk  | 0.0%         | 3.8%         | 0.0%         | 1.2%         | 0.0%         | 0.0%         | 0.0%         | 6.2%         |
| Others  | 0.0%         | 0.0%         | 0.0%         | 0.0%         | 1.6%         | 1.4%         | 0.0%         | 0.0%         |
| <b>ITA(civil commitment): # Resolved</b>                        | <b>1506</b>  | <b>1471</b>  | <b>1386</b>  | <b>1271</b>  | <b>1273</b>  | <b>1437</b>  | <b>1304</b>  | <b>1311</b>  |
| Court Decision to Commit  | 16.7%        | 19.9%        | 22.0%        | 24.7%        | 21.8%        | 20.2%        | 24.4%        | 23.6%        |
| Closed by Court   | 0.2%         | 0.0%         | 0.0%         | 0.0%         | 0.1%         | 0.0%         | 0.0%         | 0.0%         |
| Dismissal   | 12.9%        | 14.1%        | 13.8%        | 13.5%        | 12.6%        | 9.8%         | 8.4%         | 9.0%         |
| Uncontested   | 70.2%        | 66.0%        | 64.2%        | 61.8%        | 65.6%        | 70.0%        | 67.2%        | 67.4%        |
| <b>Juv. Dependency: # Resolved</b>                              | <b>75</b>    | <b>71</b>    | <b>92</b>    | <b>86</b>    | <b>70</b>    | <b>53</b>    | <b>59</b>    | <b>82</b>    |
| Finding of Dependency   | 57.3%        | 60.6%        | 63.0%        | 59.3%        | 64.3%        | 77.4%        | 69.5%        | 73.2%        |
| Dismissal   | 41.3%        | 39.4%        | 35.9%        | 40.7%        | 35.7%        | 22.6%        | 30.5%        | 26.8%        |
| Others  | 1.3%         | 0.0%         | 1.1%         | 0.0%         | 0.0%         | 0.0%         | 0.0%         | 0.0%         |

Table 2 (cont.). Number of Cases Resolved and Resolution Category (%)  
King County Superior Court

| Reporting Category                      | Q4/22      | Q1/23      | Q2/23      | Q3/23      | Q4/23      | Q1/24      | Q2/24      | Q3/24      |
|---|------------|------------|------------|------------|------------|------------|------------|------------|
| <b>Juv. Terminations: # Resolved</b>    | <b>31</b>  | <b>48</b>  | <b>71</b>  | <b>53</b>  | <b>51</b>  | <b>42</b>  | <b>46</b>  | <b>44</b>  |
| Finding of Dependency                   | 80.6%      | 89.6%      | 84.5%      | 88.7%      | 88.2%      | 85.7%      | 87.0%      | 75.0%      |
| Dismissal                               | 19.4%      | 10.4%      | 15.5%      | 11.3%      | 11.8%      | 14.3%      | 13.0%      | 22.7%      |
| Others                                  | 0.0%       | 0.0%       | 0.0%       | 0.0%       | 0.0%       | 0.0%       | 0.0%       | 2.3%       |
| <b>ARY/CHINS/OTHER: # Resolved</b>      | <b>68</b>  | <b>117</b> | <b>103</b> | <b>110</b> | <b>103</b> | <b>129</b> | <b>148</b> | <b>150</b> |
| Approve of Petition                     | 67.6%      | 76.1%      | 79.6%      | 82.7%      | 82.5%      | 79.8%      | 91.2%      | 91.3%      |
| Dismissal                               | 32.4%      | 23.9%      | 20.4%      | 17.3%      | 17.5%      | 20.2%      | 8.8%       | 8.7%       |
| Others                                  | 0.0%       | 0.0%       | 0.0%       | 0.0%       | 0.0%       | 0.0%       | 0.0%       | 0.0%       |
| <b>Juvenile Truancy: # Resolved</b>     | <b>151</b> | <b>179</b> | <b>168</b> | <b>294</b> | <b>236</b> | <b>224</b> | <b>552</b> | <b>370</b> |
| Approve of Petition                     | 7.3%       | 10.6%      | 24.4%      | 5.4%       | 8.1%       | 13.8%      | 19.2%      | 3.5%       |
| Dismissal                               | 92.7%      | 88.8%      | 75.6%      | 94.6%      | 91.9%      | 86.2%      | 80.8%      | 93.2%      |
| Others                                  | 0.0%       | 0.6%       | 0.6%       | 0.0%       | 0.0%       | 0.0%       | 0.0%       | 3.2%       |
| <b>Juvenile Offense: # Resolved</b>     | <b>94</b>  | <b>156</b> | <b>208</b> | <b>161</b> | <b>184</b> | <b>178</b> | <b>158</b> | <b>253</b> |
| Resolved by Trial (Fact Finding)        | 0.0%       | 0.0%       | 0.0%       | 0.6%       | 0.0%       | 0.0%       | 0.6%       | 0.6%       |
| Resolved by Guilty Plea                 | 36.2%      | 47.4%      | 41.8%      | 34.8%      | 44.0%      | 31.5%      | 33.5%      | 37.9%      |
| Dismissal                               | 43.6%      | 34.6%      | 37.0%      | 41.0%      | 35.3%      | 51.1%      | 41.1%      | 45.1%      |
| Deferred Disposition (DDSP)             | 11.7%      | 14.1%      | 11.5%      | 21.7%      | 15.8%      | 12.4%      | 17.1%      | 12.3%      |
| Others (including Deferred Prosecution) | 8.5%       | 3.8%       | 9.6%       | 1.9%       | 4.9%       | 5.1%       | 7.6%       | 4.7%       |
| <b>Criminal RALJ: # Resolved</b>        | <b>9</b>   | <b>11</b>  | <b>11</b>  | <b>8</b>   | <b>16</b>  | <b>23</b>  | <b>12</b>  | <b>29</b>  |
| RALJ Decision                           | 66.7%      | 54.5%      | 54.5%      | 62.5%      | 87.5%      | 60.9%      | 75.0%      | 55.2%      |
| Dismissal                               | 33.3%      | 45.5%      | 36.4%      | 37.5%      | 12.5%      | 39.1%      | 25.0%      | 17.2%      |
| Others                                  | 0.0%       | 0.0%       | 9.1%       | 0.0%       | 0.0%       | 0.0%       | 0.0%       | 27.6%      |
| <b>Civil RALJ: # Resolved</b>           | <b>10</b>  | <b>7</b>   | <b>9</b>   | <b>17</b>  | <b>12</b>  | <b>24</b>  | <b>19</b>  | <b>19</b>  |
| RALJ Decision                           | 20.0%      | 57.1%      | 44.4%      | 35.3%      | 25.0%      | 25.0%      | 26.3%      | 21.1%      |
| Dismissal                               | 70.0%      | 42.9%      | 55.6%      | 64.7%      | 75.0%      | 75.0%      | 68.4%      | 73.7%      |
| Others                                  | 10.0%      | 0.0%       | 0.0%       | 0.0%       | 0.0%       | 0.0%       | 5.3%       | 5.3%       |

Chart 2-A. Quarterly Resolutions  
Total Judicial Cases Only ("Matters Filed with Clerk" excluded)

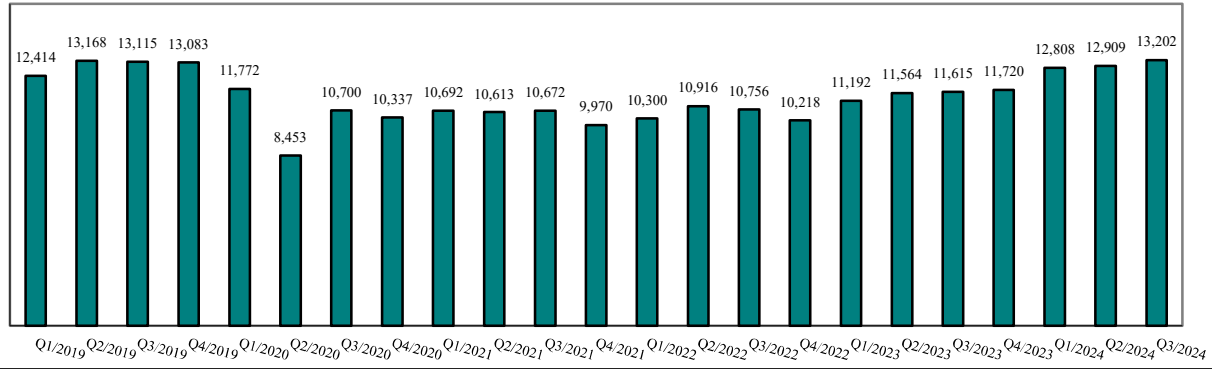


Chart 2-B. Quarterly Resolutions: Criminal and Juvenile Offense Cases

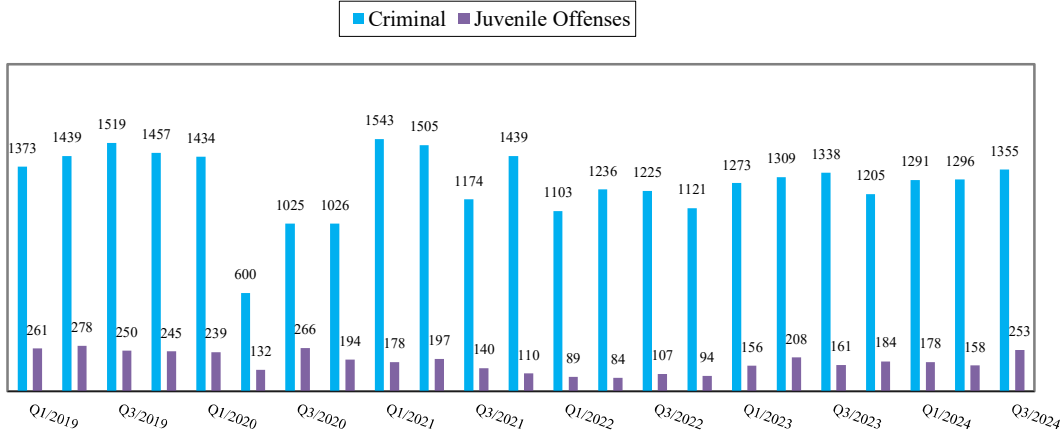
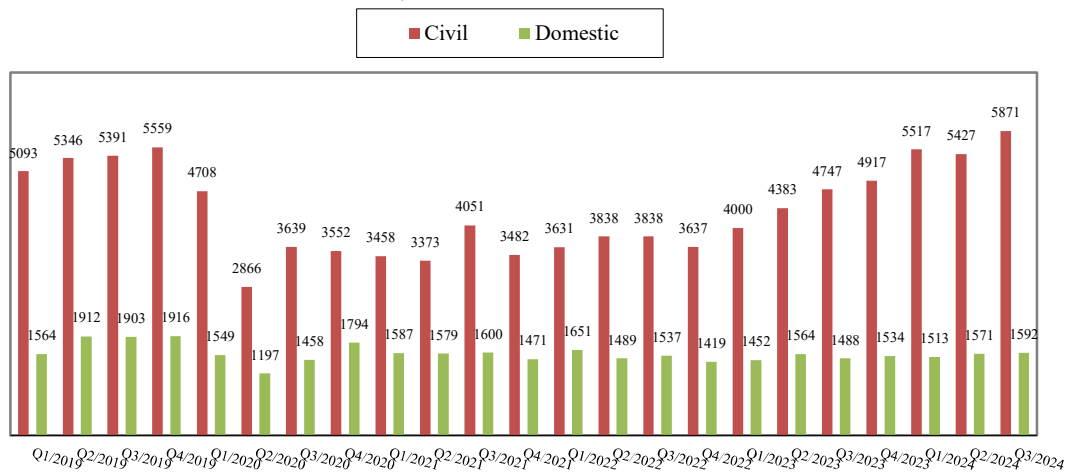


Chart 2-C. Quarterly Resolutions: Civil and Domestic Cases



Note: "Civil" is specifically defined in this report. The category of "Civil" does **not** include the following case types: domestic, probate, guardianship, adoption, Parentage, ITA (civil commitment), juvenile cases (dependency, at-risk youth, child-in-need of service), civil RAL, and tax filings that don't require judicial resources ("matters filed with clerk").



Table 3. Age of Resolved Cases  
King County Superior Court

| Reporting Category                       | Age of Cases at Resolution |       |       |       |       |       |       |       |
|--|----------------------------|-------|-------|-------|-------|-------|-------|-------|
|  | Q4/22                      | Q1/23 | Q2/23 | Q3/23 | Q4/23 | Q1/24 | Q2/24 | Q3/24 |
| <b>Criminal (excl. RALJ)</b>             |                            |       |       |       |       |       |       |       |
| Age (days)                               |                            |       |       |       |       |       |       |       |
| 50% Cases Resolved by Day                | 232                        | 190   | 212   | 193   | 214   | 252   | 230   | 214   |
| 90% Cases Resolved by Day                | 740                        | 799   | 806   | 809   | 842   | 774   | 773   | 709   |
| <b>Comparison with Court Standard of</b> |                            |       |       |       |       |       |       |       |
| 90% in 4 months                          | 32%                        | 38%   | 35%   | 37%   | 36%   | 29%   | 34%   | 33%   |
| 98% in 6 months                          | 42%                        | 49%   | 44%   | 48%   | 46%   | 39%   | 42%   | 45%   |
| 100% in 9 months                         | 56%                        | 60%   | 58%   | 59%   | 59%   | 53%   | 56%   | 58%   |
| <b>Civil (excl. RALJ)</b>                |                            |       |       |       |       |       |       |       |
| Age (days)                               |                            |       |       |       |       |       |       |       |
| 50% Cases Resolved by Day                | 47                         | 56    | 43    | 43    | 38    | 63    | 49    | 57    |
| 90% Cases Resolved by Day                | 371                        | 376   | 371   | 346   | 345   | 399   | 430   | 353   |
| <b>Comparison with Court Standard of</b> |                            |       |       |       |       |       |       |       |
| 90% in 12 months                         | 89%                        | 89%   | 89%   | 91%   | 91%   | 88%   | 87%   | 90%   |
| 98% in 18 months                         | 96%                        | 96%   | 95%   | 97%   | 97%   | 94%   | 92%   | 96%   |
| 100% in 24 months                        | 98%                        | 98%   | 97%   | 98%   | 98%   | 97%   | 94%   | 98%   |
| <b>Domestic</b>                          |                            |       |       |       |       |       |       |       |
| Age (days)                               |                            |       |       |       |       |       |       |       |
| 50% Cases Resolved by Day                | 179                        | 194   | 187   | 188   | 210   | 204   | 197   | 185   |
| 90% Cases Resolved by Day                | 449                        | 457   | 439   | 448   | 488   | 493   | 467   | 512   |
| <b>Comparison with Court Standard of</b> |                            |       |       |       |       |       |       |       |
| 90% in 8 months                          | 60%                        | 56%   | 60%   | 60%   | 56%   | 58%   | 57%   | 57%   |
| 98% in 10 months                         | 71%                        | 67%   | 70%   | 68%   | 67%   | 66%   | 68%   | 65%   |
| 100% in 14 months                        | 88%                        | 88%   | 89%   | 88%   | 85%   | 86%   | 86%   | 84%   |
| <b>Probate</b>                           |                            |       |       |       |       |       |       |       |
| Age (days)                               |                            |       |       |       |       |       |       |       |
| 50% Cases Resolved by Day                | 2                          | 3     | 2     | 3     | 3     | 2     | 3     | 3     |
| 90% Cases Resolved by Day                | 35                         | 44    | 31    | 59    | 33    | 28    | 54    | 50    |
| <b>Comparison with Court Standard of</b> |                            |       |       |       |       |       |       |       |
| 90% in 8 months                          | 99%                        | 98%   | 99%   | 97%   | 99%   | 99%   | 98%   | 99%   |
| 98% in 18 months                         | 100%                       | 100%  | 99%   | 99%   | 100%  | 100%  | 99%   | 100%  |
| 100% in 36 months                        | 100%                       | 100%  | 100%  | 100%  | 100%  | 100%  | 100%  | 100%  |
| <b>Guardianship</b>                      |                            |       |       |       |       |       |       |       |
| Age (days)                               |                            |       |       |       |       |       |       |       |
| 50% Cases Resolved by Day                | 62                         | 62    | 63    | 62    | 63    | 63    | 64    | 66    |
| 90% Cases Resolved by Day                | 177                        | 196   | 135   | 128   | 170   | 140   | 158   | 187   |
| <b>Comparison with Court Standard of</b> |                            |       |       |       |       |       |       |       |
| 90% in 8 months                          | 94%                        | 92%   | 96%   | 96%   | 95%   | 95%   | 94%   | 95%   |
| 98% in 18 months                         | 98%                        | 99%   | 100%  | 100%  | 99%   | 100%  | 99%   | 99%   |
| 100% in 36 months                        | 100%                       | 100%  | 100%  | 100%  | 100%  | 100%  | 100%  | 100%  |
| <b>Adoption</b>                          |                            |       |       |       |       |       |       |       |
| Age (days)                               |                            |       |       |       |       |       |       |       |
| 50% Cases Resolved by Day                | 36                         | 42    | 50    | 47    | 37    | 73    | 56    | 39    |
| 90% Cases Resolved by Day                | 257                        | 209   | 319   | 263   | 222   | 617   | 237   | 225   |
| <b>Comparison with Court Standard of</b> |                            |       |       |       |       |       |       |       |
| 90% in 8 months                          | 87%                        | 95%   | 85%   | 88%   | 95%   | 76%   | 90%   | 90%   |
| 98% in 10 months                         | 92%                        | 97%   | 89%   | 93%   | 95%   | 83%   | 92%   | 92%   |
| 100% in 14 months                        | 94%                        | 99%   | 92%   | 94%   | 96%   | 83%   | 94%   | 93%   |
| <b>Parentage</b>                         |                            |       |       |       |       |       |       |       |
| Age (days)                               |                            |       |       |       |       |       |       |       |
| 50% Cases Resolved by Day                | 149                        | 165   | 208   | 222   | 139   | 226   | 195   | 245   |
| 90% Cases Resolved by Day                | 517                        | 477   | 489   | 495   | 461   | 515   | 539   | 476   |
| <b>Comparison with Court Standard of</b> |                            |       |       |       |       |       |       |       |
| 90% in 8 months                          | 71%                        | 65%   | 59%   | 54%   | 63%   | 51%   | 62%   | 49%   |
| 98% in 10 months                         | 76%                        | 76%   | 75%   | 65%   | 73%   | 72%   | 69%   | 72%   |
| 100% in 14 months                        | 87%                        | 86%   | 89%   | 88%   | 87%   | 85%   | 86%   | 83%   |

Table 3 (cont.) Age of Resolved Cases  
King County Superior Court

| Reporting Category                       | Age of Cases at Resolution |       |       |       |       |       |       |       |
|--|----------------------------|-------|-------|-------|-------|-------|-------|-------|
|  | Q4/22                      | Q1/23 | Q2/23 | Q3/23 | Q4/23 | Q1/24 | Q2/24 | Q3/24 |
| <b>ITA (civil commitment) *</b>          |                            |       |       |       |       |       |       |       |
| Age (days)                               |                            |       |       |       |       |       |       |       |
| 50% Cases Resolved by Day                | 13                         | 10    | 10    | 10    | 10    | 13    | 11    | 13    |
| 90% Cases Resolved by Day                | 92                         | 41    | 40    | 45    | 45    | 64    | 39    | 46    |
| <b>Juvenile Dependency (DEP)</b>         |                            |       |       |       |       |       |       |       |
| Age (days)                               |                            |       |       |       |       |       |       |       |
| 50% Cases Resolved by Day                | 194                        | 160   | 172   | 209   | 200   | 132   | 182   | 160   |
| 90% Cases Resolved by Day                | 523                        | 557   | 556   | 459   | 489   | 433   | 530   | 432   |
| <b>Comparison with Court Standard of</b> |                            |       |       |       |       |       |       |       |
| 90% in 8 months                          | 64%                        | 69%   | 60%   | 58%   | 54%   | 74%   | 68%   | 73%   |
| 98% in 10 months                         | 77%                        | 79%   | 73%   | 72%   | 67%   | 74%   | 73%   | 77%   |
| 100% in 14 months                        | 87%                        | 83%   | 85%   | 86%   | 79%   | 89%   | 81%   | 89%   |
| <b>Juvenile Termination (TER)</b>        |                            |       |       |       |       |       |       |       |
| Age (days)                               |                            |       |       |       |       |       |       |       |
| 50% Cases Resolved by Day                | 224                        | 378   | 238   | 258   | 206   | 258   | 291   | 159   |
| 90% Cases Resolved by Day                | 830                        | 806   | 853   | 504   | 808   | 869   | 717   | 544   |
| <b>Comparison with Court Standard of</b> |                            |       |       |       |       |       |       |       |
| 90% in 8 months                          | 52%                        | 46%   | 52%   | 43%   | 61%   | 48%   | 41%   | 68%   |
| 98% in 10 months                         | 61%                        | 50%   | 62%   | 64%   | 73%   | 52%   | 52%   | 73%   |
| 100% in 14 months                        | 68%                        | 50%   | 79%   | 76%   | 80%   | 67%   | 76%   | 82%   |
| <b>ARY/CHINS/OTHER</b>                   |                            |       |       |       |       |       |       |       |
| Age (days)                               |                            |       |       |       |       |       |       |       |
| 50% Cases Resolved by Day                | 35                         | 39    | 32    | 35    | 34    | 35    | 32    | 32    |
| 90% Cases Resolved by Day                | 181                        | 288   | 123   | 188   | 96    | 243   | 69    | 67    |
| <b>Comparison with Court Standard of</b> |                            |       |       |       |       |       |       |       |
| 90% in 8 months                          | 96%                        | 87%   | 98%   | 94%   | 95%   | 90%   | 98%   | 97%   |
| 98% in 10 months                         | 97%                        | 91%   | 98%   | 97%   | 97%   | 96%   | 100%  | 97%   |
| 100% in 14 months                        | 100%                       | 94%   | 100%  | 97%   | 100%  | 100%  | 100%  | 97%   |
| <b>Juvenile Truancy*</b>                 |                            |       |       |       |       |       |       |       |
| Age (days)                               |                            |       |       |       |       |       |       |       |
| 50% Cases Resolved by Day                | 203                        | 366   | 378   | 414   | 286   | 356   | 399   | 604   |
| 90% Cases Resolved by Day                | 320                        | 421   | 431   | 518   | 517   | 462   | 519   | 929   |
| <b>Juvenile Offense</b>                  |                            |       |       |       |       |       |       |       |
| Age (days)                               |                            |       |       |       |       |       |       |       |
| 50% Cases Resolved by Day                | 118                        | 136   | 116   | 154   | 132   | 126   | 106   | 140   |
| 90% Cases Resolved by Day                | 407                        | 422   | 369   | 385   | 358   | 397   | 331   | 306   |
| <b>Comparison with Court Standard of</b> |                            |       |       |       |       |       |       |       |
| 90% in 4 months                          | 52%                        | 47%   | 51%   | 39%   | 49%   | 48%   | 56%   | 40%   |
| 98% in 6 months                          | 65%                        | 58%   | 68%   | 60%   | 63%   | 70%   | 75%   | 66%   |
| 100% in 9 months                         | 81%                        | 75%   | 78%   | 79%   | 84%   | 83%   | 85%   | 85%   |
| <b>Criminal RALJ</b>                     |                            |       |       |       |       |       |       |       |
| Age (days)                               |                            |       |       |       |       |       |       |       |
| 50% Cases Resolved by Day                | 307                        | 227   | 253   | 202   | 366   | 256   | 175   | 204   |
| 90% Cases Resolved by Day                | 532                        | 490   | 431   | 427   | 504   | 531   | 578   | 471   |
| <b>Civil RALJ</b>                        |                            |       |       |       |       |       |       |       |
| Age (days)                               |                            |       |       |       |       |       |       |       |
| 50% Cases Resolved by Day                | 165                        | 202   | 173   | 165   | 166   | 180   | 164   | 165   |
| 90% Cases Resolved by Day                | 224                        | 292   | 245   | 318   | 243   | 728   | 226   | 325   |

\* No standard yet.

Table 4. Active Pending Caseload Statistics  
King County Superior Court

| Reporting Category            |     | Q4/22        | Q1/23        | Q2/23        | Q3/23        | Q4/23        | Q1/24        | Q2/24        | Q3/24        |
|-------------------------------|-----|--------------|--------------|--------------|--------------|--------------|--------------|--------------|--------------|
| <b>Total (incl. RALJ)</b>     |     |              |              |              |              |              |              |              |              |
| Previous Pending              | (+) | 19684        | 20095        | 20774        | 21357        | 21942        | 21865        | 23044        | 24122        |
| New Filing                    | (+) | 10885        | 12228        | 12338        | 12246        | 12368        | 13811        | 14179        | 13727        |
| Resolved                      | (-) | 10218        | 11192        | 11564        | 11615        | 11720        | 12808        | 12909        | 13202        |
| <b>End Pending</b>            |     | <b>20095</b> | <b>20774</b> | <b>21357</b> | <b>21942</b> | <b>21865</b> | <b>23044</b> | <b>24122</b> | <b>24439</b> |
| <b>Resolution Rate*</b>       |     | <b>0.939</b> | <b>0.915</b> | <b>0.937</b> | <b>0.948</b> | <b>0.948</b> | <b>0.927</b> | <b>0.910</b> | <b>0.962</b> |
| <b>Criminal (excl. RALJ)</b>  |     |              |              |              |              |              |              |              |              |
| Previous Pending              | (+) | 4222         | 4298         | 4635         | 4286         | 4222         | 3919         | 3918         | 4069         |
| New Filing                    | (+) | 1298         | 1353         | 1302         | 1248         | 994          | 1285         | 1314         | 1308         |
| Resolved                      | (-) | 1121         | 1273         | 1309         | 1338         | 1205         | 1291         | 1296         | 1355         |
| <b>End Pending</b>            |     | <b>4298</b>  | <b>4635</b>  | <b>4286</b>  | <b>4222</b>  | <b>3919</b>  | <b>3918</b>  | <b>4069</b>  | <b>4010</b>  |
| <b>Resolution Rate*</b>       |     | <b>0.864</b> | <b>0.941</b> | <b>1.005</b> | <b>1.072</b> | <b>1.212</b> | <b>1.005</b> | <b>0.986</b> | <b>1.036</b> |
| <b>Civil (excl. RALJ)</b>     |     |              |              |              |              |              |              |              |              |
| Previous Pending              | (+) | 6563         | 6799         | 6762         | 7124         | 7615         | 8034         | 8394         | 9125         |
| New Filing                    | (+) | 3937         | 4246         | 4579         | 5261         | 5697         | 5773         | 6340         | 6333         |
| Resolved                      | (-) | 3637         | 4000         | 4383         | 4747         | 4917         | 5517         | 5427         | 5871         |
| <b>End Pending</b>            |     | <b>6799</b>  | <b>6762</b>  | <b>7124</b>  | <b>7615</b>  | <b>8034</b>  | <b>8394</b>  | <b>9125</b>  | <b>9429</b>  |
| <b>Resolution Rate*</b>       |     | <b>0.924</b> | <b>0.942</b> | <b>0.957</b> | <b>0.902</b> | <b>0.863</b> | <b>0.956</b> | <b>0.856</b> | <b>0.927</b> |
| <b>Domestic</b>               |     |              |              |              |              |              |              |              |              |
| Previous Pending              | (+) | 4359         | 4281         | 4417         | 4448         | 4624         | 4404         | 4564         | 4664         |
| New Filing                    | (+) | 1351         | 1689         | 1582         | 1646         | 1452         | 1622         | 1713         | 1730         |
| Resolved                      | (-) | 1419         | 1452         | 1564         | 1488         | 1534         | 1513         | 1571         | 1592         |
| <b>End Pending</b>            |     | <b>4281</b>  | <b>4417</b>  | <b>4448</b>  | <b>4624</b>  | <b>4404</b>  | <b>4564</b>  | <b>4664</b>  | <b>4782</b>  |
| <b>Resolution Rate*</b>       |     | <b>1.050</b> | <b>0.860</b> | <b>0.989</b> | <b>0.904</b> | <b>1.056</b> | <b>0.933</b> | <b>0.917</b> | <b>0.920</b> |
| <b>Probate</b>                |     |              |              |              |              |              |              |              |              |
| Previous Pending              | (+) | 1302         | 1388         | 1420         | 1485         | 1506         | 1572         | 1711         | 1699         |
| New Filing                    | (+) | 1824         | 2100         | 1941         | 1697         | 1825         | 2160         | 1928         | 1849         |
| Resolved                      | (-) | 1712         | 2026         | 1852         | 1656         | 1749         | 2002         | 1897         | 1751         |
| <b>End Pending</b>            |     | <b>1388</b>  | <b>1420</b>  | <b>1485</b>  | <b>1506</b>  | <b>1572</b>  | <b>1711</b>  | <b>1699</b>  | <b>1799</b>  |
| <b>Resolution Rate*</b>       |     | <b>0.939</b> | <b>0.965</b> | <b>0.954</b> | <b>0.976</b> | <b>0.958</b> | <b>0.927</b> | <b>0.984</b> | <b>0.947</b> |
| <b>Guardianship</b>           |     |              |              |              |              |              |              |              |              |
| Previous Pending              | (+) | 492          | 489          | 522          | 532          | 563          | 541          | 573          | 537          |
| New Filing                    | (+) | 238          | 279          | 256          | 263          | 225          | 284          | 233          | 250          |
| Resolved                      | (-) | 209          | 226          | 248          | 221          | 233          | 238          | 252          | 207          |
| <b>End Pending</b>            |     | <b>489</b>   | <b>522</b>   | <b>532</b>   | <b>563</b>   | <b>541</b>   | <b>573</b>   | <b>537</b>   | <b>575</b>   |
| <b>Resolution Rate*</b>       |     | <b>0.878</b> | <b>0.810</b> | <b>0.969</b> | <b>0.840</b> | <b>1.036</b> | <b>0.838</b> | <b>1.082</b> | <b>0.828</b> |
| <b>Adoption</b>               |     |              |              |              |              |              |              |              |              |
| Previous Pending              | (+) | 265          | 259          | 266          | 263          | 248          | 237          | 238          | 229          |
| New Filing                    | (+) | 88           | 89           | 88           | 69           | 72           | 79           | 60           | 69           |
| Resolved                      | (-) | 100          | 75           | 89           | 84           | 73           | 63           | 71           | 71           |
| <b>End Pending</b>            |     | <b>259</b>   | <b>266</b>   | <b>263</b>   | <b>248</b>   | <b>237</b>   | <b>238</b>   | <b>229</b>   | <b>223</b>   |
| <b>Resolution Rate*</b>       |     | <b>1.136</b> | <b>0.843</b> | <b>1.011</b> | <b>1.217</b> | <b>1.014</b> | <b>0.797</b> | <b>1.183</b> | <b>1.029</b> |
| <b>Parentage</b>              |     |              |              |              |              |              |              |              |              |
| Previous Pending              | (+) | 210          | 226          | 214          | 228          | 224          | 253          | 255          | 262          |
| New Filing                    | (+) | 97           | 74           | 84           | 77           | 98           | 80           | 112          | 93           |
| Resolved                      | (-) | 76           | 80           | 71           | 81           | 64           | 74           | 97           | 97           |
| <b>End Pending</b>            |     | <b>226</b>   | <b>214</b>   | <b>228</b>   | <b>224</b>   | <b>253</b>   | <b>255</b>   | <b>262</b>   | <b>252</b>   |
| <b>Resolution Rate*</b>       |     | <b>0.784</b> | <b>1.081</b> | <b>0.845</b> | <b>1.052</b> | <b>0.653</b> | <b>0.925</b> | <b>0.866</b> | <b>1.043</b> |
| <b>ITA (civil commitment)</b> |     |              |              |              |              |              |              |              |              |
| Previous Pending              | (+) | 405          | 282          | 274          | 309          | 356          | 333          | 362          | 414          |
| New Filing                    | (+) | 1388         | 1449         | 1423         | 1328         | 1341         | 1391         | 1356         | 1368         |
| Resolved                      | (-) | 1506         | 1471         | 1386         | 1271         | 1273         | 1437         | 1304         | 1311         |
| <b>End Pending</b>            |     | <b>282</b>   | <b>274</b>   | <b>309</b>   | <b>356</b>   | <b>333</b>   | <b>362</b>   | <b>414</b>   | <b>505</b>   |
| <b>Resolution Rate*</b>       |     | <b>1.085</b> | <b>1.015</b> | <b>0.974</b> | <b>0.957</b> | <b>0.949</b> | <b>1.033</b> | <b>0.962</b> | <b>0.958</b> |

\* A value of "Resolution Rate" less than one indicates the resolution pace is slower than the filing pace.

Table 4 (cont.) Active Pending Caseload Statistics  
King County Superior Court

| Reporting Category                | Q4/22        | Q1/23        | Q2/23        | Q3/23        | Q4/23        | Q1/24        | Q2/24        | Q3/24        |
|-----------------------------------|--------------|--------------|--------------|--------------|--------------|--------------|--------------|--------------|
| <b>Juvenile Dependency (DEP)</b>  |              |              |              |              |              |              |              |              |
| Previous Pending (+)              | 283          | 279          | 247          | 240          | 207          | 217          | 242          | 246          |
| New Filing (+)                    | 75           | 105          | 81           | 53           | 80           | 82           | 103          | 136          |
| Resolved (-)                      | 75           | 71           | 92           | 86           | 70           | 53           | 59           | 82           |
| <b>End Pending</b>                | <b>279</b>   | <b>247</b>   | <b>240</b>   | <b>207</b>   | <b>217</b>   | <b>242</b>   | <b>246</b>   | <b>296</b>   |
| <b>Resolution Rate*</b>           | <b>1.000</b> | <b>0.676</b> | <b>1.136</b> | <b>1.623</b> | <b>0.875</b> | <b>0.646</b> | <b>0.573</b> | <b>0.603</b> |
| <b>Juvenile Termination (TER)</b> |              |              |              |              |              |              |              |              |
| Previous Pending (+)              | 241          | 265          | 205          | 180          | 175          | 137          | 113          | 106          |
| New Filing (+)                    | 56           | 45           | 50           | 50           | 23           | 26           | 36           | 30           |
| Resolved (-)                      | 31           | 48           | 71           | 53           | 51           | 42           | 46           | 44           |
| <b>End Pending</b>                | <b>265</b>   | <b>205</b>   | <b>180</b>   | <b>175</b>   | <b>137</b>   | <b>113</b>   | <b>106</b>   | <b>92</b>    |
| <b>Resolution Rate*</b>           | <b>0.554</b> | <b>1.067</b> | <b>1.420</b> | <b>1.060</b> | <b>2.217</b> | <b>1.615</b> | <b>1.278</b> | <b>1.467</b> |
| <b>ARY/CHINS/OTHERS</b>           |              |              |              |              |              |              |              |              |
| Previous Pending (+)              | 127          | 158          | 121          | 129          | 121          | 143          | 129          | 143          |
| New Filing (+)                    | 100          | 118          | 114          | 108          | 122          | 126          | 161          | 174          |
| Resolved (-)                      | 68           | 117          | 103          | 110          | 103          | 129          | 148          | 150          |
| <b>End Pending</b>                | <b>158</b>   | <b>121</b>   | <b>129</b>   | <b>121</b>   | <b>143</b>   | <b>129</b>   | <b>143</b>   | <b>157</b>   |
| <b>Resolution Rate*</b>           | <b>0.680</b> | <b>0.992</b> | <b>0.904</b> | <b>1.019</b> | <b>0.844</b> | <b>1.024</b> | <b>0.919</b> | <b>0.862</b> |
| <b>Juvenile Truancy</b>           |              |              |              |              |              |              |              |              |
| Previous Pending (+)              | 900          | 999          | 1275         | 1739         | 1689         | 1677         | 2092         | 2081         |
| New Filing (+)                    | 250          | 459          | 633          | 244          | 224          | 638          | 543          | 133          |
| Resolved (-)                      | 151          | 179          | 168          | 294          | 236          | 224          | 552          | 370          |
| <b>End Pending</b>                | <b>999</b>   | <b>1275</b>  | <b>1739</b>  | <b>1689</b>  | <b>1677</b>  | <b>2092</b>  | <b>2081</b>  | <b>1829</b>  |
| <b>Resolution Rate*</b>           | <b>0.604</b> | <b>0.390</b> | <b>0.265</b> | <b>1.205</b> | <b>1.054</b> | <b>0.351</b> | <b>1.017</b> | <b>2.782</b> |
| <b>Juvenile Offense</b>           |              |              |              |              |              |              |              |              |
| Previous Pending (+)              | 256          | 301          | 334          | 309          | 299          | 233          | 233          | 233          |
| New Filing (+)                    | 152          | 194          | 181          | 168          | 180          | 180          | 235          | 223          |
| Resolved (-)                      | 94           | 156          | 208          | 161          | 184          | 178          | 158          | 253          |
| <b>End Pending</b>                | <b>301</b>   | <b>334</b>   | <b>309</b>   | <b>299</b>   | <b>302</b>   | <b>369</b>   | <b>448</b>   | <b>408</b>   |
| <b>Resolution Rate*</b>           | <b>0.618</b> | <b>0.804</b> | <b>1.149</b> | <b>0.958</b> | <b>1.022</b> | <b>0.989</b> | <b>0.672</b> | <b>1.135</b> |
| <b>Criminal RALJ</b>              |              |              |              |              |              |              |              |              |
| Previous Pending (+)              | 36           | 42           | 46           | 47           | 49           | 55           | 47           | 62           |
| New Filing (+)                    | 16           | 14           | 12           | 12           | 20           | 16           | 27           | 13           |
| Resolved (-)                      | 9            | 11           | 11           | 8            | 16           | 23           | 12           | 29           |
| <b>End Pending</b>                | <b>42</b>    | <b>46</b>    | <b>47</b>    | <b>49</b>    | <b>55</b>    | <b>47</b>    | <b>62</b>    | <b>47</b>    |
| <b>Resolution Rate*</b>           | <b>0.563</b> | <b>0.786</b> | <b>0.917</b> | <b>0.667</b> | <b>0.800</b> | <b>1.438</b> | <b>0.444</b> | <b>2.231</b> |
| <b>Civil RALJ</b>                 |              |              |              |              |              |              |              |              |
| Previous Pending (+)              | 23           | 29           | 36           | 38           | 44           | 41           | 37           | 37           |
| New Filing (+)                    | 15           | 14           | 12           | 22           | 15           | 16           | 18           | 18           |
| Resolved (-)                      | 10           | 7            | 9            | 17           | 12           | 24           | 19           | 19           |
| <b>End Pending</b>                | <b>29</b>    | <b>36</b>    | <b>38</b>    | <b>44</b>    | <b>41</b>    | <b>37</b>    | <b>37</b>    | <b>35</b>    |
| <b>Resolution Rate*</b>           | <b>0.667</b> | <b>0.500</b> | <b>0.750</b> | <b>0.773</b> | <b>0.800</b> | <b>1.500</b> | <b>1.056</b> | <b>1.056</b> |

\* A value of "Resolution Rate" less than one indicates the resolution pace is slower than the filing pace.

Table 4-A. Active Re-opened Cases and Modification Cases

| Reporting Category               | Q4/22 | Q1/23 | Q2/23 | Q3/23 | Q4/23 | Q1/24 | Q2/24 | Q3/24 |
|----------------------------------|-------|-------|-------|-------|-------|-------|-------|-------|
| Re-opened without disposition    | 806   | 824   | 851   | 865   | 905   | 903   | 922   | 931   |
| Modification without disposition | 501   | 508   | 552   | 522   | 503   | 506   | 398   | 379   |

Chart 4-A. Pending Caseload at Quarter End:  
Total Judicial Cases Only ("Matters Filed with Clerk" excluded)

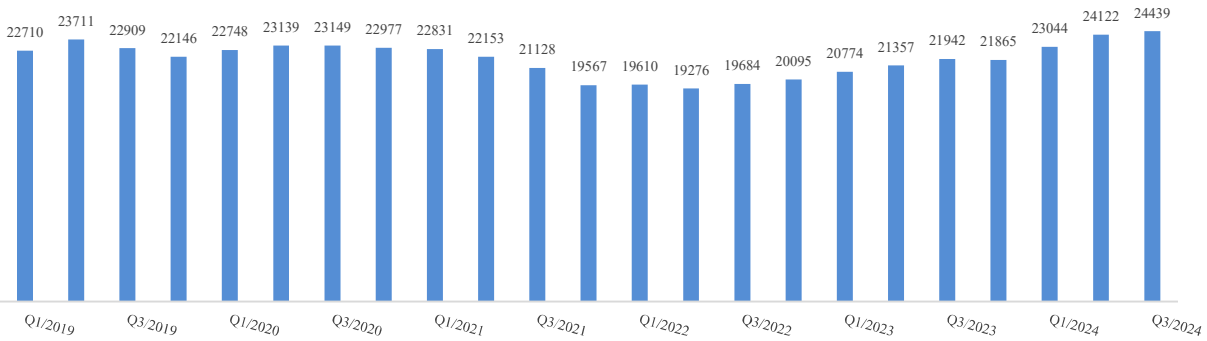


Chart 4-B. Pending Caseload at Quarter End: Criminal, Domestic, and Civil Cases

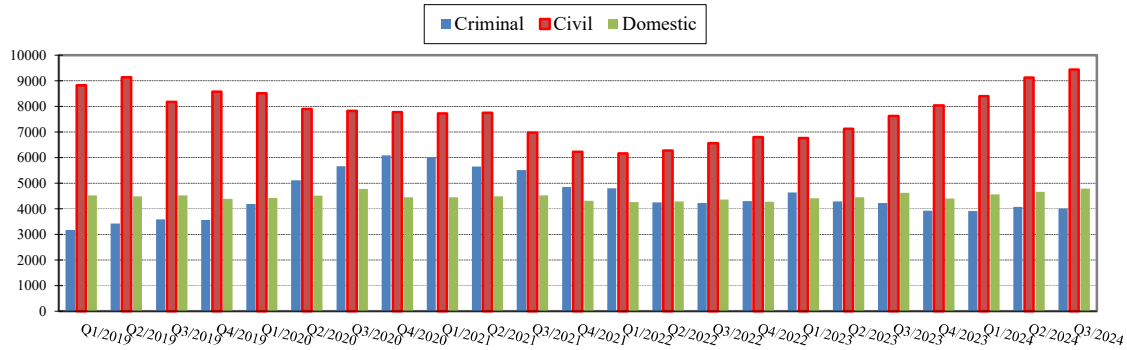
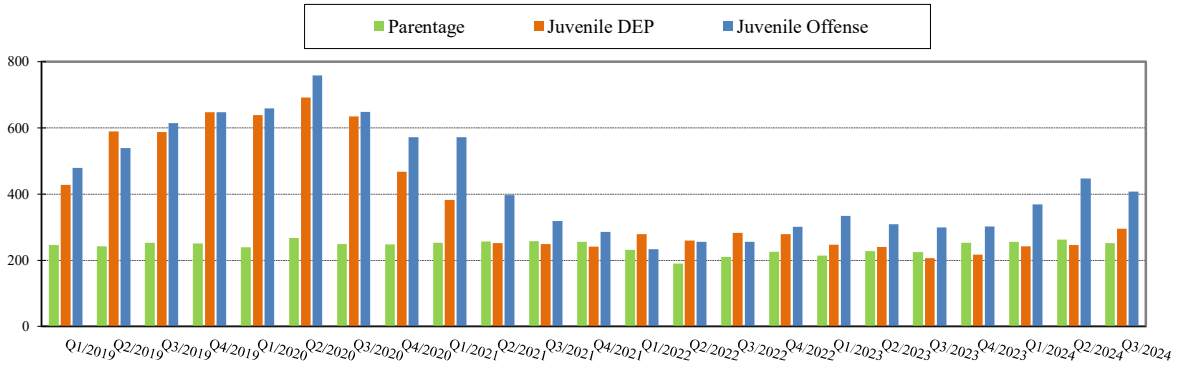


Chart 4-C. Pending Caseload at Quarter End:  
Juvenile Offense, Paternity, and Dependency Cases



Note: "Civil" is specifically defined in this report. The category of "Civil" does **not** include the following case types: domestic, probate, guardianship, adoption, Parentage, ITA (civil commitment), juvenile cases (dependency, at-risk youth, child-in-need of service), civil RAJ, and tax filings that don't require judicial resources ("matters filed with clerk").

**Table 5. Age of Pending Cases**  
*King County Superior Court*

| Reporting Category                       | Age of Pending Cases and # of Cases in Each Age Interval |             |             |             |             |             |             |             |
|--|--|-------------|-------------|-------------|-------------|-------------|-------------|-------------|
|  | Q4/22  | Q1/23       | Q2/23       | Q3/23       | Q4/23       | Q1/24       | Q2/24       | Q3/24       |
| <b>Criminal (excl. RALJ): # of Cases</b> | <b>4298</b>  | <b>4635</b> | <b>4286</b> | <b>4222</b> | <b>3919</b> | <b>3918</b> | <b>4069</b> | <b>4010</b> |
| <b>Age (days)</b>                        |  |             |             |             |             |             |             |             |
| Median (50 percentile)                   | 222  | 198         | 213         | 216         | 236         | 227         | 200         | 203         |
| 90 percentile                            | 796  | 767         | 778         | 745         | 742         | 727         | 696         | 691         |
| <b># of Cases in Age Interval</b>        |  |             |             |             |             |             |             |             |
| 0 - 60 days (0 - 2 months)               | 860  | 1137        | 768         | 762         | 562         | 744         | 746         | 759         |
| 61 - 120 days (3 - 4 months)             | 583  | 595         | 604         | 555         | 532         | 516         | 678         | 606         |
| 121 - 180 days (5 - 6 months)            | 442  | 466         | 551         | 511         | 509         | 401         | 486         | 490         |
| 181 - 270 days (7 - 9 months)            | 522  | 589         | 529         | 634         | 561         | 569         | 507         | 605         |
| > 270 days (> 9 months)                  | 1891   | 1848        | 1834        | 1760        | 1755        | 1688        | 1652        | 1550        |
| <b>Civil (excl. RALJ): # of Cases</b>    | <b>6799</b>  | <b>6762</b> | <b>7124</b> | <b>7615</b> | <b>8034</b> | <b>8394</b> | <b>9125</b> | <b>9429</b> |
| <b>Age (days)</b>                        |  |             |             |             |             |             |             |             |
| Median (50 percentile)                   | 165  | 164         | 150         | 144         | 137         | 137         | 129         | 138         |
| 90 percentile                            | 629  | 597         | 544         | 545         | 550         | 509         | 405         | 390         |
| <b># of Cases in Age Interval</b>        |  |             |             |             |             |             |             |             |
| 0 - 120 days (0 - 4 months)              | 2658   | 2751        | 3054        | 3388        | 3657        | 3843        | 4372        | 4326        |
| 121 - 240 days (5 - 8 months)            | 1675   | 1582        | 1550        | 1659        | 1830        | 2135        | 2385        | 2628        |
| 241 - 360 days (9 - 12 months)           | 1033   | 1074        | 1084        | 968         | 1027        | 1016        | 1211        | 1332        |
| 361 - 540 days (13 - 18 months)          | 606  | 581         | 711         | 821         | 691         | 640         | 670         | 702         |
| 541 - 720 days (19 - 24 months)          | 251  | 253         | 253         | 289         | 340         | 330         | 276         | 244         |
| > 720 days (> 24 months)                 | 576  | 521         | 472         | 490         | 489         | 430         | 211         | 197         |
| <b>Domestic: # of Cases</b>              | <b>4281</b>  | <b>4417</b> | <b>4448</b> | <b>4624</b> | <b>4404</b> | <b>4564</b> | <b>4664</b> | <b>4782</b> |
| <b>Age (days)</b>                        |  |             |             |             |             |             |             |             |
| Median (50 percentile)                   | 159  | 151         | 144         | 151         | 157         | 159         | 145         | 148         |
| 90 percentile                            | 577  | 556         | 544         | 548         | 570         | 556         | 537         | 515         |
| <b># of Cases in Age Interval</b>        |  |             |             |             |             |             |             |             |
| 0 - 120 days (0 - 4 months)              | 1690   | 1918        | 1936        | 1971        | 1776        | 1877        | 2064        | 2055        |
| 121 - 240 days (5 - 8 months)            | 1149   | 1083        | 1013        | 1170        | 1140        | 1142        | 1034        | 1225        |
| 241 - 360 days (9 - 12 months)           | 671  | 665         | 670         | 594         | 669         | 688         | 713         | 640         |
| 361 - 540 days (13 - 18 months)          | 316  | 296         | 380         | 422         | 330         | 385         | 391         | 417         |
| > 540 days (> 18 months)                 | 455  | 455         | 449         | 467         | 489         | 472         | 462         | 445         |
| <b>Probate: # of Cases</b>               | <b>1388</b>  | <b>1420</b> | <b>1485</b> | <b>1506</b> | <b>1572</b> | <b>1711</b> | <b>1699</b> | <b>1799</b> |
| <b>Age (days)</b>                        |  |             |             |             |             |             |             |             |
| Median (50 percentile)                   | 438  | 490         | 486         | 543         | 579         | 558         | 636         | 649         |
| 90 percentile                            | 2070   | 2141        | 2199        | 2260        | 2314        | 2350        | 2442        | 2491        |
| <b># of Cases in Age Interval</b>        |  |             |             |             |             |             |             |             |
| 0 - 120 days (0 - 4 months)              | 354  | 346         | 373         | 320         | 312         | 371         | 351         | 366         |
| 121 - 240 days (5 - 8 months)            | 152  | 163         | 149         | 183         | 162         | 166         | 149         | 155         |
| 241 - 360 days (9 - 12 months)           | 141  | 117         | 116         | 115         | 148         | 132         | 122         | 125         |
| 361 - 540 days (13 - 18 months)          | 119  | 116         | 145         | 132         | 136         | 169         | 164         | 168         |
| > 540 days (> 18 months)                 | 622  | 678         | 702         | 756         | 814         | 873         | 913         | 985         |
| <b>Guardianship: # of Cases</b>          | <b>489</b>   | <b>522</b>  | <b>532</b>  | <b>563</b>  | <b>541</b>  | <b>573</b>  | <b>537</b>  | <b>575</b>  |
| <b>Age (days)</b>                        |  |             |             |             |             |             |             |             |
| Median (50 percentile)                   | 233  | 235         | 262         | 269         | 368         | 369         | 452         | 390         |
| 90 percentile                            | 1382   | 1173        | 1264        | 1354        | 1447        | 1522        | 1629        | 1705        |
| <b># of Cases in Age Interval</b>        |  |             |             |             |             |             |             |             |
| 0 - 120 days (0 - 4 months)              | 180  | 216         | 203         | 203         | 177         | 210         | 181         | 204         |
| 121 - 240 days (5 - 8 months)            | 70   | 50          | 54          | 63          | 43          | 47          | 43          | 47          |
| 241 - 360 days (9 - 12 months)           | 35   | 42          | 49          | 40          | 48          | 28          | 29          | 22          |
| 361 - 540 days (13 - 18 months)          | 56   | 42          | 37          | 49          | 53          | 40          | 34          | 38          |
| > 540 days (> 18 months)                 | 148  | 172         | 189         | 208         | 220         | 248         | 250         | 264         |

Table 5 (cont.). Age of Pending Cases  
King County Superior Court

| Reporting Category                        | Age of Pending Cases and # of Cases in Each Age Interval |            |            |            |            |            |            |            |
|---|--|------------|------------|------------|------------|------------|------------|------------|
|   | Q4/22  | Q1/23      | Q2/23      | Q3/23      | Q4/23      | Q1/24      | Q2/24      | Q3/24      |
| <b>Adoption: # of Cases</b>               | <b>259</b>   | <b>266</b> | <b>263</b> | <b>248</b> | <b>237</b> | <b>238</b> | <b>229</b> | <b>223</b> |
| <b>Age (days)</b>                         |  |            |            |            |            |            |            |            |
| Median (50 percentile)                    | 452  | 509        | 534        | 714        | 921        | 696        | 829        | 956        |
| 90 percentile                             | 1952   | 2028       | 2119       | 2228       | 2320       | 2366       | 2475       | 2567       |
| <b># of Cases in Age Interval</b>         |  |            |            |            |            |            |            |            |
| 0 - 120 days (0 - 4 months)               | 60   | 56         | 57         | 39         | 32         | 52         | 41         | 39         |
| 121 - 240 days (5 - 8 months)             | 39   | 33         | 21         | 25         | 18         | 20         | 16         | 18         |
| 241 - 360 days (9 - 12 months)            | 19   | 25         | 29         | 13         | 12         | 9          | 11         | 8          |
| 361 - 540 days (13 - 18 months)           | 16   | 24         | 25         | 33         | 24         | 21         | 16         | 14         |
| > 540 days (> 18 months)                  | 125  | 128        | 131        | 138        | 151        | 136        | 145        | 144        |
| <b>Parentage: # of Cases</b>              | <b>226</b>   | <b>214</b> | <b>228</b> | <b>224</b> | <b>253</b> | <b>255</b> | <b>262</b> | <b>252</b> |
| <b>Age (days)</b>                         |  |            |            |            |            |            |            |            |
| Median (50 percentile)                    | 115  | 142        | 158        | 147        | 157        | 157        | 157        | 138        |
| 90 percentile                             | 422  | 470        | 473        | 443        | 453        | 447        | 425        | 419        |
| <b># of Cases in Age Interval</b>         |  |            |            |            |            |            |            |            |
| 0 - 120 days (0 - 4 months)               | 116  | 92         | 99         | 94         | 108        | 93         | 115        | 106        |
| 121 - 240 days (5 - 8 months)             | 48   | 61         | 63         | 58         | 64         | 77         | 62         | 77         |
| 241 - 360 days (9 - 12 months)            | 29   | 26         | 33         | 34         | 39         | 46         | 44         | 31         |
| 361 - 540 days (13 - 18 months)           | 20   | 24         | 17         | 23         | 29         | 25         | 26         | 27         |
| > 540 days (> 18 months)                  | 13   | 11         | 16         | 15         | 13         | 14         | 15         | 11         |
| <b>ITA (civil commitment): # of Cases</b> | <b>282</b>   | <b>274</b> | <b>309</b> | <b>356</b> | <b>333</b> | <b>362</b> | <b>414</b> | <b>505</b> |
| <b>Age (days)</b>                         |  |            |            |            |            |            |            |            |
| Median (50 percentile)                    | 25   | 25         | 26         | 38         | 49         | 41         | 44         | 67         |
| 90 percentile                             | 257  | 346        | 414        | 418        | 580        | 598        | 664        | 666        |
| <b># of Cases in Age Interval</b>         |  |            |            |            |            |            |            |            |
| 0 - 120 days (0 - 4 months)               | 228  | 213        | 213        | 213        | 227        | 244        | 270        | 316        |
| 121 - 240 days (5 - 8 months)             | 21   | 22         | 22         | 22         | 40         | 29         | 45         | 65         |
| > 240 days (> 8 months)                   | 33   | 39         | 39         | 39         | 66         | 89         | 99         | 124        |
| <b>Juv Dependency (DEP): # of Cases</b>   | <b>279</b>   | <b>247</b> | <b>240</b> | <b>207</b> | <b>217</b> | <b>242</b> | <b>246</b> | <b>296</b> |
| <b>Age (days)</b>                         |  |            |            |            |            |            |            |            |
| Median (50 percentile)                    | 180  | 136        | 155        | 202        | 199        | 180        | 132        | 123        |
| 90 percentile                             | 681  | 388        | 411        | 480        | 544        | 586        | 601        | 609        |
| <b># of Cases in Age Interval</b>         |  |            |            |            |            |            |            |            |
| 0 - 60 days (0 - 2 months)                | 50   | 70         | 47         | 38         | 42         | 56         | 57         | 94         |
| 61 - 120 days (3 - 4 months)              | 44   | 44         | 53         | 22         | 41         | 24         | 55         | 54         |
| 121 - 180 days (5 - 6 months)             | 46   | 36         | 33         | 31         | 21         | 45         | 39         | 36         |
| 181 - 270 days (7 - 9 months)             | 35   | 43         | 41         | 44         | 26         | 22         | 20         | 41         |
| > 270 days (> 9 months)                   | 104  | 54         | 66         | 72         | 87         | 95         | 75         | 71         |
| <b>Juv Termination (TER): # of Cases</b>  | <b>265</b>   | <b>205</b> | <b>180</b> | <b>175</b> | <b>137</b> | <b>113</b> | <b>106</b> | <b>92</b>  |
| <b>Age (days)</b>                         |  |            |            |            |            |            |            |            |
| Median (50 percentile)                    | 464  | 232        | 220        | 205        | 271        | 269        | 212        | 202        |
| 90 percentile                             | 1866   | 961        | 1013       | 891        | 985        | 1076       | 1130       | 1259       |
| <b># of Cases in Age Interval</b>         |  |            |            |            |            |            |            |            |
| 0 - 60 days (0 - 2 months)                | 36   | 31         | 24         | 28         | 13         | 12         | 18         | 18         |
| 61 - 120 days (3 - 4 months)              | 28   | 30         | 35         | 25         | 14         | 16         | 22         | 19         |
| 121 - 180 days (5 - 6 months)             | 26   | 25         | 15         | 24         | 26         | 5          | 11         | 7          |
| 181 - 270 days (7 - 9 months)             | 25   | 26         | 28         | 22         | 15         | 24         | 3          | 7          |
| > 270 days (> 9 months)                   | 150  | 93         | 78         | 76         | 69         | 56         | 52         | 41         |

Table 5 (cont.). Age of Pending Cases  
King County Superior Court

| Reporting Category                  | Age of Pending Cases and # of Cases in Each Age Interval |             |             |             |             |             |             |             |
|-------------------------------------|--|-------------|-------------|-------------|-------------|-------------|-------------|-------------|
|                                     | Q4/22  | Q1/23       | Q2/23       | Q3/23       | Q4/23       | Q1/24       | Q2/24       | Q3/24       |
| <b>ARY/CHINS/OTHER: # of Cases</b>  | <b>158</b>   | <b>121</b>  | <b>129</b>  | <b>121</b>  | <b>143</b>  | <b>129</b>  | <b>143</b>  | <b>157</b>  |
| <b>Age (days)</b>                   |  |             |             |             |             |             |             |             |
| Median (50 percentile)              | 166  | 116         | 129         | 159         | 168         | 122         | 140         | 111         |
| 90 percentile                       | 1858   | 1921        | 2012        | 2104        | 2124        | 2287        | 2293        | 2384        |
| <b># of Cases in Age Interval</b>   |  |             |             |             |             |             |             |             |
| 0 - 60 days (0 - 2 months)          | 42   | 52          | 49          | 33          | 45          | 49          | 56          | 66          |
| 61 - 120 days (3 - 4 months)        | 25   | 12          | 12          | 18          | 18          | 14          | 14          | 18          |
| 121 - 180 days (5 - 6 months)       | 15   | 6           | 13          | 12          | 13          | 6           | 5           | 6           |
| 181 - 270 days (7 - 9 months)       | 8  | 7           | 8           | 12          | 14          | 9           | 11          | 7           |
| > 270 days (> 9 months)             | 68   | 44          | 47          | 46          | 53          | 51          | 57          | 60          |
| <b>Juvenile Truancy: # of Cases</b> | <b>999</b>   | <b>1275</b> | <b>1739</b> | <b>1689</b> | <b>1677</b> | <b>2092</b> | <b>2081</b> | <b>1829</b> |
| <b>Age (days)</b>                   |  |             |             |             |             |             |             |             |
| Median (50 percentile)              | 235  | 155         | 130         | 185         | 245         | 257         | 171         | 228         |
| 90 percentile                       | 355  | 410         | 459         | 520         | 600         | 662         | 671         | 522         |
| <b># of Cases in Age Interval</b>   |  |             |             |             |             |             |             |             |
| 0 - 60 days (0 - 2 months)          | 183  | 336         | 432         | 5           | 173         | 427         | 377         | 4           |
| 61 - 120 days (3 - 4 months)        | 55   | 188         | 379         | 434         | 45          | 288         | 342         | 330         |
| 121 - 180 days (5 - 6 months)       | 43   | 146         | 257         | 387         | 239         | 110         | 360         | 300         |
| 181 - 270 days (7 - 9 months)       | 378  | 40          | 195         | 400         | 508         | 241         | 170         | 537         |
| > 270 days (> 9 months)             | 340  | 565         | 476         | 463         | 712         | 1026        | 832         | 658         |
| <b>Juvenile Offense: # of Cases</b> | <b>301</b>   | <b>334</b>  | <b>309</b>  | <b>299</b>  | <b>302</b>  | <b>369</b>  | <b>448</b>  | <b>408</b>  |
| <b>Age (days)</b>                   |  |             |             |             |             |             |             |             |
| Median (50 percentile)              | 122  | 81          | 107         | 106         | 90          | 89          | 103         | 105         |
| 90 percentile                       | 424  | 372         | 367         | 374         | 305         | 313         | 315         | 358         |
| <b># of Cases in Age Interval</b>   |  |             |             |             |             |             |             |             |
| 0 - 60 days (0 - 2 months)          | 86   | 138         | 86          | 98          | 104         | 127         | 134         | 115         |
| 61 - 120 days (3 - 4 months)        | 62   | 48          | 86          | 64          | 82          | 98          | 117         | 111         |
| 121 - 180 days (5 - 6 months)       | 36   | 51          | 50          | 50          | 45          | 54          | 85          | 57          |
| 181 - 270 days (7 - 9 months)       | 53   | 39          | 36          | 42          | 34          | 40          | 53          | 52          |
| > 270 days (> 9 months)             | 64   | 58          | 51          | 45          | 37          | 50          | 59          | 73          |
| <b>Criminal RAL: # of Cases</b>     | <b>42</b>  | <b>46</b>   | <b>47</b>   | <b>49</b>   | <b>55</b>   | <b>47</b>   | <b>62</b>   | <b>47</b>   |
| <b>Age (days)</b>                   |  |             |             |             |             |             |             |             |
| Median (50 percentile)              | 109  | 149         | 184         | 243         | 145         | 124         | 110         | 140         |
| 90 percentile                       | 328  | 344         | 355         | 447         | 459         | 528         | 367         | 432         |
| <b># of Cases in Age Interval</b>   |  |             |             |             |             |             |             |             |
| 0 - 60 days (0 - 2 months)          | 11   | 7           | 8           | 9           | 17          | 9           | 21          | 5           |
| 61 - 120 days (3 - 4 months)        | 11   | 9           | 6           | 6           | 7           | 12          | 11          | 13          |
| 121 - 180 days (5 - 6 months)       | 9  | 12          | 8           | 7           | 6           | 11          | 9           | 11          |
| 181 - 270 days (7 - 9 months)       | 4  | 11          | 13          | 5           | 8           | 4           | 10          | 9           |
| > 270 days (> 9 months)             | 7  | 7           | 12          | 22          | 17          | 11          | 11          | 9           |
| <b>Civil RAL: # of Cases</b>        | <b>29</b>  | <b>36</b>   | <b>38</b>   | <b>44</b>   | <b>41</b>   | <b>37</b>   | <b>37</b>   | <b>35</b>   |
| <b>Age (days)</b>                   |  |             |             |             |             |             |             |             |
| Median (50 percentile)              | 80   | 101         | 122         | 90          | 110         | 108         | 97          | 81          |
| 90 percentile                       | 562  | 471         | 562         | 580         | 672         | 243         | 334         | 238         |
| <b># of Cases in Age Interval</b>   |  |             |             |             |             |             |             |             |
| 0 - 60 days (0 - 2 months)          | 12   | 10          | 6           | 16          | 14          | 13          | 9           | 10          |
| 61 - 120 days (3 - 4 months)        | 5  | 11          | 13          | 10          | 8           | 10          | 13          | 12          |
| 121 - 180 days (5 - 6 months)       | 2  | 7           | 5           | 4           | 7           | 7           | 8           | 7           |
| 181 - 270 days (7 - 9 months)       | 4  | 1           | 6           | 5           | 2           | 5           | 2           | 3           |
| > 270 days (> 9 months)             | 6  | 7           | 8           | 9           | 10          | 2           | 5           | 3           |



Table 6. Seattle vs. Regional Justice Center (KNT): Filing, Resolution, Pending Caseload (%)  
King County Superior Court

|                         | Q3/23      |            | Q4/23      |            | Q1/24      |            | Q2/24      |            | Q3/24      |            |
|-------------------------|------------|------------|------------|------------|------------|------------|------------|------------|------------|------------|
|                         | SEA        | KNT        | SEA        | KNT        | SEA        | KNT        | SEA        | KNT        | SEA        | KNT        |
| <b>Filings Total</b>    | <b>65%</b> | <b>35%</b> | <b>66%</b> | <b>34%</b> | <b>63%</b> | <b>37%</b> | <b>64%</b> | <b>36%</b> | <b>64%</b> | <b>36%</b> |
| Criminal (excl. RALJ)   | 65%        | 35%        | 57%        | 43%        | 55%        | 45%        | 57%        | 43%        | 58%        | 42%        |
| Civil (excl. RALJ)      | 57%        | 43%        | 59%        | 41%        | 55%        | 45%        | 58%        | 42%        | 57%        | 43%        |
| Domestic                | 64%        | 36%        | 61%        | 39%        | 63%        | 37%        | 63%        | 37%        | 62%        | 38%        |
| Probate                 | 70%        | 30%        | 71%        | 29%        | 69%        | 31%        | 69%        | 31%        | 70%        | 30%        |
| Guardianship            | 56%        | 44%        | 53%        | 47%        | 52%        | 48%        | 58%        | 43%        | 47%        | 53%        |
| Adoption                | 71%        | 29%        | 81%        | 19%        | 86%        | 14%        | 75%        | 25%        | 78%        | 22%        |
| Parentage               | 39%        | 61%        | 50%        | 50%        | 54%        | 46%        | 50%        | 50%        | 45%        | 55%        |
| ITA (civil commitment)  | 100%       | --         | 100%       | --         | 100%       | --         | 100%       | --         | 100%       | --         |
| Juv. Dependency (DEP)   | 70%        | 30%        | 61%        | 39%        | 79%        | 21%        | 83%        | 17%        | 73%        | 17%        |
| Juv. Termination (TER)  | 82%        | 18%        | 83%        | 17%        | 81%        | 19%        | 47%        | 53%        | 70%        | 30%        |
| ARY/CHINS/Other         | 57%        | 43%        | 60%        | 40%        | 48%        | 52%        | 52%        | 48%        | 47%        | 53%        |
| Juvenile Truancy        | 2%         | 98%        | 62%        | 38%        | 30%        | 70%        | 32%        | 68%        | 3%         | 97%        |
| Juvenile Offense        | 100%       | --         | 100%       | --         | 100%       | --         | 100%       | --         | 100%       | --         |
| Criminal RALJ           | 75%        | 25%        | 80%        | 20%        | 69%        | 31%        | 78%        | 22%        | 62%        | 38%        |
| Civil RALJ              | 100%       | 0%         | 80%        | 20%        | 81%        | 19%        | 83%        | 17%        | 61%        | 39%        |
| <b>Resolution Total</b> | <b>65%</b> | <b>35%</b> | <b>66%</b> | <b>34%</b> | <b>66%</b> | <b>34%</b> | <b>64%</b> | <b>36%</b> | <b>65%</b> | <b>35%</b> |
| Criminal (excl. RALJ)   | 62%        | 38%        | 62%        | 38%        | 62%        | 38%        | 59%        | 41%        | 60%        | 40%        |
| Civil (excl. RALJ)      | 57%        | 43%        | 59%        | 41%        | 58%        | 42%        | 58%        | 42%        | 57%        | 42%        |
| Domestic                | 59%        | 41%        | 63%        | 38%        | 63%        | 37%        | 64%        | 36%        | 64%        | 36%        |
| Probate                 | 72%        | 28%        | 70%        | 30%        | 70%        | 30%        | 68%        | 32%        | 70%        | 30%        |
| Guardianship            | 55%        | 45%        | 58%        | 43%        | 58%        | 43%        | 53%        | 47%        | 56%        | 44%        |
| Adoption                | 74%        | 26%        | 82%        | 18%        | 78%        | 22%        | 83%        | 17%        | 82%        | 18%        |
| Parentage               | 37%        | 63%        | 61%        | 39%        | 49%        | 51%        | 52%        | 48%        | 44%        | 48%        |
| ITA (civil commitment)  | 100%       | --         | 100%       | --         | 100%       | --         | 100%       | --         | 100%       | --         |
| Juv. Dependency (DEP)   | 64%        | 36%        | 59%        | 41%        | 70%        | 30%        | 83%        | 17%        | 70%        | 30%        |
| Juv. Termination (TER)  | 60%        | 40%        | 73%        | 28%        | 83%        | 17%        | 74%        | 26%        | 61%        | 39%        |
| ARY/CHINS/Other         | 51%        | 49%        | 61%        | 39%        | 43%        | 57%        | 59%        | 41%        | 47%        | 53%        |
| Juvenile Truancy        | 35%        | 65%        | 38%        | 62%        | 35%        | 65%        | 32%        | 68%        | 33%        | 67%        |
| Juvenile Offense        | 100%       | --         | 100%       | --         | 100%       | --         | 100%       | --         | 100%       | --         |
| Criminal RALJ           | 38%        | 62%        | 88%        | 13%        | 65%        | 35%        | 58%        | 42%        | 90%        | 10%        |
| Civil RALJ              | 77%        | 23%        | 67%        | 33%        | 88%        | 12%        | 84%        | 16%        | 95%        | 5%         |
| <b>Pending Total</b>    | <b>63%</b> | <b>37%</b> | <b>63%</b> | <b>37%</b> | <b>61%</b> | <b>39%</b> | <b>61%</b> | <b>39%</b> | <b>61%</b> | <b>39%</b> |
| Criminal (excl. RALJ)   | 64%        | 36%        | 63%        | 37%        | 61%        | 39%        | 60%        | 40%        | 59%        | 41%        |
| Civil (excl. RALJ)      | 65%        | 35%        | 65%        | 35%        | 63%        | 37%        | 63%        | 37%        | 63%        | 37%        |
| Domestic                | 61%        | 39%        | 61%        | 39%        | 61%        | 39%        | 60%        | 40%        | 59%        | 41%        |
| Probate                 | 70%        | 30%        | 71%        | 29%        | 69%        | 31%        | 70%        | 30%        | 70%        | 30%        |
| Guardianship            | 59%        | 41%        | 58%        | 42%        | 55%        | 45%        | 56%        | 44%        | 52%        | 48%        |
| Adoption                | 68%        | 32%        | 67%        | 33%        | 69%        | 31%        | 66%        | 34%        | 66%        | 34%        |
| Parentage               | 37%        | 63%        | 37%        | 63%        | 38%        | 62%        | 37%        | 63%        | 39%        | 61%        |
| ITA (civil commitment)  | 100%       | --         | 100%       | --         | 100%       | --         | 100%       | --         | 100%       | --         |
| Juv. Dependency (DEP)   | 68%        | 32%        | 68%        | 32%        | 70%        | 30%        | 70%        | 30%        | 71%        | 29%        |
| Juv. Termination (TER)  | 77%        | 23%        | 81%        | 19%        | 79%        | 21%        | 68%        | 32%        | 71%        | 29%        |
| ARY/CHINS/Other         | 66%        | 34%        | 64%        | 36%        | 70%        | 30%        | 60%        | 40%        | 60%        | 40%        |
| Juvenile Truancy        | 34%        | 66%        | 37%        | 63%        | 35%        | 65%        | 35%        | 65%        | 33%        | 67%        |
| Juvenile Offense        | 100%       | --         | 100%       | --         | 100%       | --         | 100%       | --         | 100%       | --         |
| Criminal RALJ           | 76%        | 24%        | 73%        | 27%        | 75%        | 25%        | 79%        | 21%        | 68%        | 32%        |
| Civil RALJ              | 86%        | 14%        | 88%        | 12%        | 87%        | 13%        | 87%        | 13%        | 69%        | 31%        |

Excluding Cases filed with the Clerk

Table 7. Quarterly Utilization of Pro Tem Judges/Commissioners <sup>(1)</sup>

| Category                             | Q2/22       | Q3/22       | Q4/22       | Q1/23       | Q2/23       | Q3/23       | Q4/23       | Q1/24       | Q2/24       | Q3/24       |
|--------------------------------------|-------------|-------------|-------------|-------------|-------------|-------------|-------------|-------------|-------------|-------------|
| <b>Grand Total</b>                   | <b>2166</b> | <b>2012</b> | <b>1135</b> | <b>1543</b> | <b>1688</b> | <b>1226</b> | <b>1855</b> | <b>1894</b> | <b>2494</b> | <b>1502</b> |
| <b>FTE Equivalent <sup>(2)</sup></b> | <b>4.8</b>  | <b>4.5</b>  | <b>2.5</b>  | <b>3.4</b>  | <b>3.8</b>  | <b>2.7</b>  | <b>4.1</b>  | <b>4.2</b>  | <b>5.5</b>  | <b>3.3</b>  |
| <b>By Work Type</b>                  |             |             |             |             |             |             |             |             |             |             |
| Pro Tem Judge                        | 135         | 126         | 156         | 93          | 114         | 158         | 263         | 26          | 209         | 125         |
| Pro Tem Commissioner                 | 2031        | 1886        | 979         | 1450        | 1574        | 1068        | 1592        | 1868        | 2286        | 1377        |
| <b>By Location</b>                   |             |             |             |             |             |             |             |             |             |             |
| KCCH                                 | 980         | 763         | 446         | 830         | 588         | 453         | 797         | 897         | 960         | 734         |
| MRJC                                 | 468         | 687         | 285         | 480         | 572         | 328         | 632         | 698         | 978         | 427         |
| Juvenile                             | 305         | 391         | 224         | 134         | 295         | 327         | 299         | 188         | 321         | 301         |
| ITA                                  | 376         | 126         | 180         | 98          | 216         | 118         | 127         | 111         | 235         | 40          |
| Other or Unspecified                 | 38          | 46          | 0           | 0           | 18          | 0           | 0           | 0           | 0           | 0           |
| <b>By Calendar Type</b>              |             |             |             |             |             |             |             |             |             |             |
| Criminal                             | 50          | 40          | 51          | 16          | 61          | 30          | 95          | 13          | 77          | 78          |
| Civil                                | 0           | 0           | 0           | 3           | 0           | 3           | 103         | 0           | 31          | 2           |
| Ex Parte                             | 475         | 280         | 253         | 340         | 470         | 308         | 514         | 438         | 347         | 263         |
| Family Law/Domestic                  | 922         | 1129        | 427         | 944         | 629         | 440         | 717         | 1145        | 1483        | 819         |
| Dependency                           | 257         | 351         | 119         | 68          | 259         | 202         | 234         | 175         | 220         | 256         |
| Juvenile Offense                     | 48          | 28          | 102         | 55          | 22          | 115         | 65          | 0           | 25          | 22          |
| BECCA                                | 0           | 12          | 3           | 12          | 15          | 10          | 0           | 13          | 77          | 24          |
| ITA                                  | 376         | 126         | 180         | 98          | 216         | 118         | 127         | 111         | 235         | 40          |
| Juvenile Drug Court                  | 0           | 0           | 0           | 0           | 0           | 0           | 0           | 0           | 0           | 0           |
| Family Treatment Court               | 0           | 0           | 0           | 0           | 0           | 0           | 0           | 0           | 0           | 0           |
| Plea Calendar                        | 0           | 0           | 0           | 0           | 0           | 0           | 0           | 0           | 0           | 0           |
| Status/Non-Compliance                | 0           | 0           | 0           | 0           | 0           | 0           | 0           | 0           | 0           | 0           |
| Other or Unspecified                 | 0           | 46          | 0           | 8           | 18          | 0           | 0           | 0           | 0           | 0           |
| <b>By Reason</b>                     |             |             |             |             |             |             |             |             |             |             |
| Vacation Backfill                    | 14          | 34          | 135         | 82          | 61          | 125         | 117         | 7           | 21          | 2           |
| Medical Backfill                     | 2031        | 1891        | 982         | 1461        | 1580        | 1078        | 1589        | 1881        | 2362        | 1401        |
| Duty Time                            | 83          | 34          | 18          | 0           | 22          | 24          | 145         | 6           | 111         | 99          |
| Conference Coverage                  | 0           | 7           | 0           | 0           | 8           | 0           | 6           | 0           | 0           | 0           |
| Congestion                           | 0           | 0           | 0           | 0           | 0           | 0           | 0           | 0           | 0           | 0           |
| Vacancy Coverage                     | 0           | 0           | 0           | 0           | 0           | 0           | 0           | 0           | 0           | 0           |
| Other or Unspecified                 | 38          | 46          | 0           | 0           | 18          | 0           | 0           | 0           | 0           | 0           |

(1) This table is based on the time sheet for compensation.

(2) Judge FTE Equivalent = # of hours / [7.5 hours/day \* 20 days/month \* 3 months] = # of hours/450.

Data for the most current quarter are incomplete at reporting time and will be updated in next quarterly report.

The Pro Tem hours are provided quarterly by the Administrative Services Department of King County Superior Court.

Table 8. Ex Parte and Family Law Hearings and Documents Signed

| Ex Parte: Hearings Held and Documents Signed   |             |                  |             |                  |             |                  |             |                  |
|--|-------------|------------------|-------------|------------------|-------------|------------------|-------------|------------------|
|  | 2023Q4      |                  | 2024Q1      |                  | 2024Q2      |                  | 2024Q3      |                  |
|  | Hearings    | Documents Signed | Hearings    | Documents Signed | Hearings    | Documents Signed | Hearings    | Documents Signed |
| <b>KNT (EXP04/05)</b>                          |             |                  |             |                  |             |                  |             |                  |
| Civil  | 288         | 754              | 512         | 817              | 468         | 768              | 720         | 1228             |
| Domestic                                       | 16          | 220              | 36          | 343              | 50          | 369              | 42          | 443              |
| Probate/Guardianship                           | 173         | 365              | 377         | 411              | 475         | 502              | 413         | 495              |
| Adoption/Paternity                             | 17          | 43               | 15          | 42               | 14          | 38               | 13          | 34               |
| Ex Parte Judge Panel (EXP08)                   |             | 450              |             | 461              |             | 508              |             | 516              |
| Ex Parte Via Clerk (EXP06)                     |             | 3701             |             | 3786             |             | 3643             |             | 3486             |
| <b>KNT Subtotal</b>                            | <b>494</b>  | <b>5533</b>      | <b>940</b>  | <b>5860</b>      | <b>1007</b> | <b>5828</b>      | <b>1188</b> | <b>6202</b>      |
| <b>SEA (EXP01/02)</b>                          |             |                  |             |                  |             |                  |             |                  |
| Civil  | 353         | 1129             | 594         | 1132             | 607         | 1334             | 915         | 1858             |
| Domestic                                       | 42          | 245              | 99          | 464              | 82          | 605              | 73          | 618              |
| Probate/Guardianship                           | 387         | 752              | 720         | 830              | 761         | 926              | 788         | 930              |
| Adoption/Paternity                             | 49          | 144              | 33          | 109              | 45          | 115              | 57          | 130              |
| Ex Parte Judge Panel (EXP08)                   |             | 1197             |             | 1072             |             | 1362             |             | 1220             |
| Ex Parte Via Clerk (EXP07)                     |             | 7360             |             | 8218             |             | 8057             |             | 6578             |
| <b>SEA Total</b>                               | <b>831</b>  | <b>10827</b>     | <b>1446</b> | <b>11825</b>     | <b>1495</b> | <b>12399</b>     | <b>1833</b> | <b>11334</b>     |
| <b>KNT/SEA Total</b>                           | <b>1325</b> | <b>16360</b>     | <b>2386</b> | <b>17685</b>     | <b>2502</b> | <b>18227</b>     | <b>3021</b> | <b>17536</b>     |
| FAMILY LAW: Hearings Held and Documents Signed |             |                  |             |                  |             |                  |             |                  |
|  | 2023Q4      |                  | 2024Q1      |                  | 2024Q2      |                  | 2024Q3      |                  |
|  | Hearings    | Documents Signed | Hearings    | Documents Signed | Hearings    | Documents Signed | Hearings    | Documents Signed |
| <b>KNT (FAM02)</b>                             |             |                  |             |                  |             |                  |             |                  |
| Civil  | 1239        | 720              | 1331        | 793              | 1343        | 771              | 1288        | 899              |
| Domestic                                       | 292         | 715              | 322         | 765              | 287         | 689              | 294         | 815              |
| Adoption/Paternity                             | 69          | 210              | 75          | 228              | 102         | 284              | 88          | 239              |
| <b>KNT Subtotal</b>                            | <b>1600</b> | <b>1645</b>      | <b>1728</b> | <b>1786</b>      | <b>1732</b> | <b>1744</b>      | <b>1670</b> | <b>1953</b>      |
| <b>SEA (FAM01)</b>                             |             |                  |             |                  |             |                  |             |                  |
| Civil  | 1578        | 1423             | 1335        | 1154             | 1573        | 1409             | 1419        | 1224             |
| Domestic                                       | 411         | 933              | 406         | 963              | 410         | 941              | 464         | 1017             |
| Adoption/Paternity                             | 36          | 212              | 48          | 219              | 42          | 211              | 34          | 179              |
| <b>SEA Total</b>                               | <b>2025</b> | <b>2568</b>      | <b>1789</b> | <b>2336</b>      | <b>2025</b> | <b>2561</b>      | <b>1917</b> | <b>2420</b>      |
| <b>KNT/SEA Total</b>                           | <b>3625</b> | <b>4213</b>      | <b>3517</b> | <b>4122</b>      | <b>3757</b> | <b>4305</b>      | <b>3587</b> | <b>4373</b>      |

## Glossary and Definition

### **Active Status**

A case is active if it is not on suspense status (see Suspense Status).

### **Completion**

A case is completed if dispositive document is filed with the court following resolution.

### **Jury Trial**

A hearing is reported as a jury trial if the jury is impaneled.

### **Non-Jury Trial**

A hearing is reported as a non-jury trial if an opening statement is made, waived, or reserved.

### **Pending Case**

A case is defined as pending if it is unresolved and active (not in suspense).

### **Post-disposition Modifications**

Petition to modify parenting plan after the resolution of the original case, based on the modification schedule.

### **Resolution**

A case is resolved if all issues in the complaint are fully adjudicated.

### **Suspended Case**

A case is placed in suspense status from active status during the reporting period.

### **Suspense Status**

A case is on suspense status if it is on warrant, appeal, stay, mediation, arbitration ("Deferred Prosecution" is not a suspense status, but is treated as a resolution).

### **Trial**

A hearing set before a judge or jury in which all the issues in the case are meant to be resolved. A trial normally includes opening statements to the court or jury stating what evidence will show, introduction of witnesses and exhibits for direct and cross examination, final arguments to the court or jury in which counsel argue both the evidence and the law, and judgment by the court or jury stating what the facts of the case are and what law applies to the facts. In a jury case, it also includes the selection of the jury. A trial can be held for one or more cases. A single trial may be held to adjudicate more than one case (as defined above).