



# King County

Department of Judicial Administration  
*Catherine Cornwall*  
*Director and Superior Court Clerk*  
(206) 296-9300 (206) 296-0100 TTY/TDD

King County Superior Court

## Civil Department Statistical Report

February 2025

Department of Judicial Administration  
Prepared by: Shiquan Liao, Ph.D., Statistician

March 15, 2025

**Report #: CIVIL-2025-02**

*Seattle Courthouse*  
516 Third Avenue Room E609  
Seattle, WA 98104-2386

*Maleng Regional Justice Center*  
401 Fourth Avenue North Room 2C  
Kent, WA 98032-4429

*Clark Children and Family  
Justice Center*  
1211 East Alder Room 3015  
Seattle, WA 98122-5598

## Civil Statistics Summary

The civil statistics report provides an overview of the caseload for the Civil and UFC Departments. The report includes the number of filings, number of resolutions, number of pending cases, age of resolved cases, and age of pending cases for both the SEA and MRJC locations.

The following categories are included in this report: **Civil, Domestic, Probate, Guardianship, Adoption, and Parentage**. This report includes all cases in these categories, regardless of whether a judge is assigned at filing or not.

*Please note that the category of “civil” in the tables of this report is more narrowly defined. Readers are encouraged to check the Appendix at the end of this report for precise definition of the terminology used in this report.*

- **Filings (Table 1, Figures 1)**

In February 2025, the total number of filings was 3,573 cases. Of those cases filed in the month, 39% were MRJC cases, and the remaining 61% were SEA cases. The average filings in 2025 for the reporting categories together were 3,738 cases per month. In comparison, the average monthly filings in 2019, 2020, 2021, 2022, 2023, and 2024 were 3,083, 2,436, 2,429, 2,601, 2,953, and 3,398 cases, respectively.

- **Resolutions (Table 2, Figures 2)**

The total resolutions in February 2025 were 3,405 cases. Of those cases resolved in the month, 40% of the resolutions were MRJC cases. In 2025, the monthly average resolutions were 3,540 cases. In comparison, the average monthly resolutions in 2019, 2020, 2021, 2022, 2023, and 2024 were 3,091, 2,378, 2,450, 2,592, 2,756, and 3,240 cases, respectively.

- **The Age of Resolved Cases (Table 3)**

Table 3 shows the comparison between the court-adopted timeline standard (as suggested by the State Advisory Committee) with the actual age of resolved cases (time from filing to resolution).

- **Pending Caseload (Table 4, Figures 3) and Age of Pending Cases (Table 5)**

At the end of February 2025, the pending caseload for the civil department was 17,455 cases, 62% being SEA cases and 38% being MRJC cases. The pending caseload shows a significant increase in recent months, particularly in general civil cases (case type 2). The age breakdown of pending cases is presented in Table 5. SEA had 142 civil cases over 24 months and 230 domestic cases over 18 months. MRJC had 48 general civil cases over 24 months and 225 domestic cases over 18 months.

**Conclusions: Filings in recent months are increasing from the low volume during the COVID-19. The average filings in 2025 were 3,738 cases. In the same period, the court resolved 3,540 cases per month. At the end of February 2025, the total pending caseload in the reporting categories was 17,455 cases. There has been an increasing trend in pending civil and probate caseload. In comparison, the pending caseload in the same reporting categories was 15,059, 14,371, 14,085, 12,941, 13,471, 15,082, and 16,938 at the year end of 2018, 2019, 2020, 2021, 2022, 2023, and 2024, respectively.**

Figure 1. Monthly Filings for SEA, MRJC and SEA/MRJC Combined

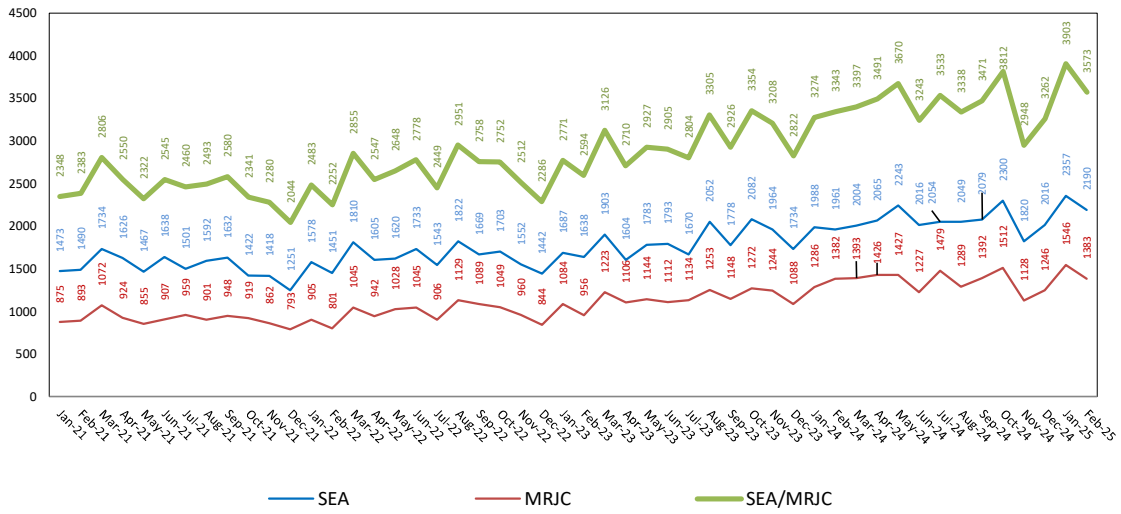


Figure 2. Monthly Resolutions for SEA, MRJC and SEA/MRJC Combined

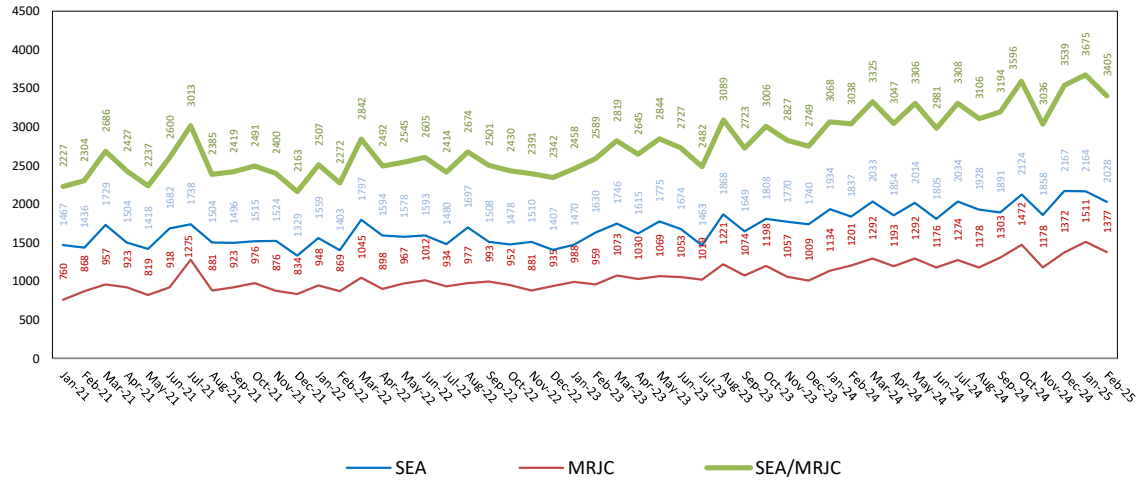


Figure 3. Monthly Pending Caseload for SEA, MRJC and SEA/MRJC Combined

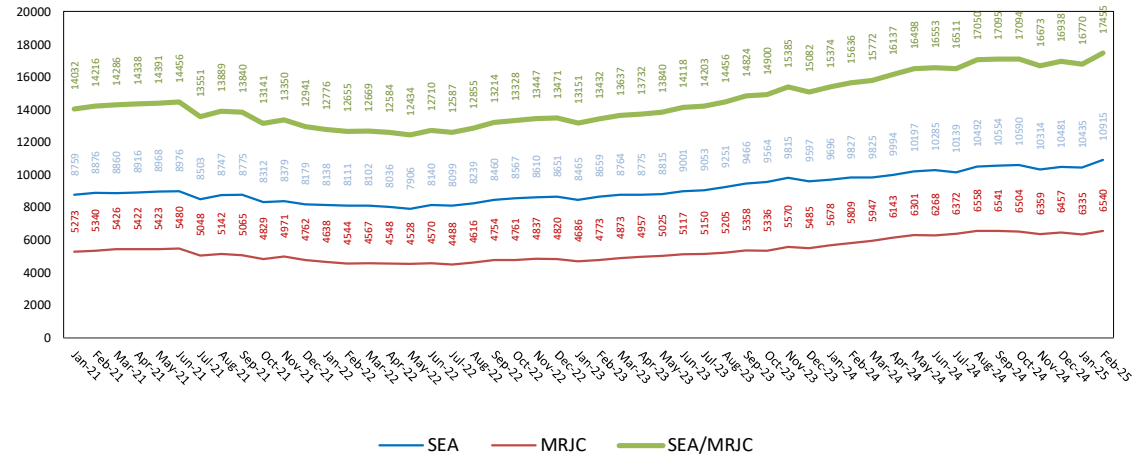


Table 1. Monthly New Filings

SEA	Jan	Feb	Mar	Apr	May	Jun	Jul	Aug	Sep	Oct	Nov	Dec
<b>TOTAL - SEA</b>												
2023	1687	1638	1903	1604	1783	1793	1670	2052	1778	2082	1964	1734
2024	1988	1961	2004	2065	2243	2016	2054	2049	2079	2300	1820	2016
2025	2357	2190										
<b>Civil - SEA</b>												
2023	749	765	918	817	897	932	942	1138	948	1211	1124	1029
2024	1053	1068	1057	1181	1284	1228	1186	1187	1244	1391	1114	1232
2025	1473	1370										
<b>Domestic - SEA</b>												
2023	322	341	377	273	325	325	292	385	373	315	332	251
2024	335	326	355	369	368	335	339	360	367	346	274	280
2025	339	298										
<b>Probate - SEA</b>												
2023	520	467	516	439	483	451	367	445	383	468	453	387
2024	524	479	497	444	500	380	458	427	401	475	369	409
2025	463	445										
<b>Guardianship - SEA</b>												
2023	60	33	52	53	44	44	39	57	52	46	47	37
2024	46	46	56	40	51	43	37	41	39	57	38	67
2025	54	40										
<b>Adoption - SEA</b>												
2023	25	26	24	20	20	19	18	22	9	25	21	10
2024	16	27	25	12	20	13	24	14	16	17	17	14
2025	23	33										
<b>Parentage - SEA</b>												
2023	11	6	16	2	14	22	12	5	13	17	12	20
2024	14	15	14	19	20	17	10	20	12	14	8	14
2025	5	4										

MRJC	Jan	Feb	Mar	Apr	May	Jun	Jul	Aug	Sep	Oct	Nov	Dec
<b>TOTAL - MRJC</b>												
2023	1084	956	1223	1106	1144	1112	1134	1253	1148	1272	1244	1088
2024	1286	1382	1393	1426	1427	1227	1479	1289	1392	1512	1128	1246
2025	1546	1383										
<b>Civil - MRJC</b>												
2023	585	552	691	614	662	669	699	810	746	793	695	729
2024	826	908	877	901	947	817	991	814	929	1024	797	862
2025	1066	945										
<b>Domestic - MRJC</b>												
2023	213	187	249	229	221	209	216	203	177	213	209	166
2024	205	172	229	248	206	187	237	203	224	230	161	182
2025	215	198										
<b>Probate - MRJC</b>												
2023	221	170	206	206	196	166	160	188	154	199	186	149
2024	203	243	214	230	198	176	185	188	190	197	127	156
2025	198	190										
<b>Guardianship - MRJC</b>												
2023	38	38	58	36	39	40	34	33	48	45	40	29
2024	42	47	47	30	39	30	49	49	35	41	27	31
2025	38	34										
<b>Adoption - MRJC</b>												
2023	8	1	5	9	10	10	8	9	3	10	7	1
2024	2	2	7	3	7	6	4	8	3	6	6	6
2025	12	6										
<b>Parentage - MRJC</b>												
2023	19	8	14	12	16	18	17	10	20	12	15	14
2024	8	10	19	14	30	12	13	27	11	14	10	9
2025	17	10										

“Civil” includes all civil actions (including RALJ), except “Matters Filed with Clerk” (Petition for Order Granting Judgment on Confession of Judgment, Tax Warrants, Abstract of Judgment, Foreign Judgment, and Transcript of Judgment), Domestic, Probate, Guardianship, Adoption, and Paternity cases.

Table 2. Monthly Resolutions

SEA	Jan	Feb	Mar	Apr	May	Jun	Jul	Aug	Sep	Oct	Nov	Dec
<b>TOTAL - SEA</b>												
2023	1470	1630	1746	1615	1775	1674	1463	1868	1643	1808	1770	1740
2024	1934	1837	2033	1854	2014	1805	2034	1928	1891	2124	1858	2167
2025	2164	2028										
<b>Civil - SEA</b>												
2023	681	801	842	825	897	853	769	1039	893	1000	937	959
2024	1101	1019	1106	984	1074	1077	1146	1125	1116	1267	1094	1359
2025	1309	1217										
<b>Domestic - SEA</b>												
2023	255	283	325	291	350	315	266	322	293	291	340	328
2024	305	309	336	372	347	290	355	327	338	355	320	354
2025	342	329										
<b>Probate - SEA</b>												
2023	454	482	499	435	455	425	366	427	391	433	402	395
2024	464	430	510	417	498	371	454	405	370	435	375	391
2025	445	404										
<b>Guardianship - SEA</b>												
2023	43	36	45	32	36	57	36	47	39	49	50	35
2024	42	49	48	44	49	41	42	36	38	37	39	39
2025	43	49										
<b>Adoption - SEA</b>												
2023	20	15	28	25	22	14	16	26	20	20	25	15
2024	15	14	20	24	24	11	19	22	17	15	24	15
2025	12	22										
<b>Parentage - SEA</b>												
2023	17	13	7	7	15	10	10	7	13	15	16	8
2024	7	16	13	13	22	15	18	13	12	15	6	9
2025	13	7										

MRJC	Jan	Feb	Mar	Apr	May	Jun	Jul	Aug	Sep	Oct	Nov	Dec
<b>TOTAL - MRJC</b>												
2023	988	959	1073	1030	1069	1053	1019	1221	1074	1198	1057	1009
2024	1134	1201	1292	1193	1292	1176	1274	1178	1303	1472	1178	1372
2025	1511	1377										
<b>Civil - MRJC</b>												
2023	501	560	622	589	615	613	624	758	681	768	648	617
2024	718	726	871	746	812	753	867	755	881	1005	842	944
2025	1105	953										
<b>Domestic - MRJC</b>												
2023	208	179	202	190	210	208	202	216	189	200	187	188
2024	186	198	179	176	198	188	208	177	187	210	171	210
2025	190	185										
<b>Probate - MRJC</b>												
2023	214	178	199	186	190	161	143	185	144	178	175	166
2024	177	229	192	208	214	188	154	181	187	183	119	154
2025	165	188										
<b>Guardianship - MRJC</b>												
2023	46	25	31	45	34	44	27	40	32	41	28	30
2024	35	29	35	42	46	30	27	34	30	41	28	40
2025	31	30										
<b>Adoption - MRJC</b>												
2023	7	3	2	1	10	17	4	6	12	3	6	4
2024	3	4	7	7	2	3	3	7	3	9	5	14
2025	8	6										
<b>Parentage - MRJC</b>												
2023	12	14	17	19	10	10	19	16	16	8	13	4
2024	15	15	8	14	19	14	15	24	15	24	13	10
2025	12	15										

"Civil" includes all civil actions (including RAL), except "Matters Filed with Clerk" (Petition for Order Granting Judgment on Confession of Judgment, Tax Warrants, Abstract of Judgment, Foreign Judgment, and Transcript of Judgment), Domestic, Probate, Guardianship, Adoption, and Parentage cases.

Table 3. Percentage of Cases Resolved in Specified Time Intervals

SEA	Feb 2024	Mar 2024	Apr 2024	May 2024	Jun 2024	Jul 2024	Aug 2024	Sep 2024	Oct 2024	Nov 2024	Dec 2024	Jan 2025	Feb 2025
<b>Civil - SEA</b>													
90% in 12 months	88%	87%	89%	88%	83%	89%	89%	86%	87%	90%	88%	90%	90%
98% in 18 months	95%	94%	95%	94%	91%	96%	95%	93%	94%	96%	95%	97%	97%
100% in 24 months	98%	97%	98%	96%	93%	99%	98%	96%	97%	98%	98%	99%	99%
<b>Domestic - SEA</b>													
90% in 8 months	61%	55%	59%	57%	60%	60%	55%	61%	56%	61%	66%	57%	58%
98% in 10 months	68%	66%	69%	68%	74%	69%	65%	67%	67%	70%	77%	63%	68%
100% in 14 months	85%	88%	87%	82%	89%	87%	84%	86%	83%	84%	89%	85%	86%
<b>Probate - SEA</b>													
90% in 8 months	99%	98%	97%	99%	98%	98%	99%	99%	99%	100%	98%	98%	98%
98% in 18 months	100%	100%	99%	99%	100%	100%	100%	100%	100%	100%	99%	100%	100%
100% in 36 months	100%	100%	100%	100%	100%	100%	100%	100%	100%	100%	100%	100%	100%
<b>Guardianship - SEA</b>													
90% in 8 months	100%	94%	96%	92%	98%	95%	97%	100%	100%	97%	97%	95%	98%
98% in 18 months	100%	100%	98%	96%	100%	100%	97%	100%	100%	100%	100%	100%	100%
100% in 36 months	100%	100%	100%	100%	100%	100%	97%	100%	100%	100%	100%	100%	100%
<b>Adoption - SEA</b>													
90% in 8 months	64%	100%	88%	96%	100%	90%	91%	82%	93%	88%	67%	75%	96%
98% in 10 months	71%	100%	88%	100%	100%	95%	91%	82%	93%	96%	67%	75%	96%
100% in 14 months	71%	100%	96%	100%	100%	100%	91%	82%	93%	100%	67%	83%	100%
<b>Parentage - SEA</b>													
90% in 8 months	56%	77%	62%	73%	73%	72%	54%	92%	80%	83%	78%	69%	43%
98% in 10 months	75%	85%	69%	77%	73%	94%	77%	92%	87%	83%	89%	85%	57%
100% in 14 months	94%	92%	92%	77%	87%	100%	77%	92%	93%	100%	89%	92%	72%

MRJC	Feb 2024	Mar 2024	Apr 2024	May 2024	Jun 2024	Jul 2024	Aug 2024	Sep 2024	Oct 2024	Nov 2024	Dec 2024	Jan 2025	Feb 2025
<b>Civil - MRJC</b>													
90% in 12 months	94%	90%	93%	89%	82%	95%	93%	93%	93%	93%	92%	94%	93%
98% in 18 months	98%	95%	96%	93%	86%	98%	98%	96%	98%	98%	99%	99%	98%
100% in 24 months	99%	96%	99%	93%	88%	99%	99%	98%	99%	99%	99%	99%	99%
<b>Domestic - MRJC</b>													
90% in 8 months	58%	51%	62%	47%	55%	60%	50%	52%	49%	57%	58%	50%	54%
98% in 10 months	65%	61%	70%	61%	62%	67%	59%	58%	58%	68%	68%	60%	62%
100% in 14 months	84%	83%	92%	87%	83%	86%	81%	75%	82%	87%	88%	88%	88%
<b>Probate - MRJC</b>													
90% in 8 months	99%	98%	99%	97%	98%	99%	98%	99%	98%	97%	97%	99%	97%
98% in 18 months	100%	100%	100%	100%	100%	100%	100%	100%	100%	99%	99%	100%	99%
100% in 36 months	100%	100%	100%	100%	100%	100%	100%	100%	100%	100%	99%	100%	100%
<b>Guardianship - MRJC</b>													
90% in 8 months	90%	91%	93%	94%	90%	93%	91%	93%	85%	93%	88%	94%	93%
98% in 18 months	100%	97%	100%	100%	100%	96%	100%	100%	95%	100%	98%	97%	100%
100% in 36 months	100%	100%	100%	100%	100%	100%	100%	100%	100%	100%	100%	100%	100%
<b>Adoption - MRJC</b>													
90% in 8 months	25%	86%	71%	50%	100%	100%	100%	100%	67%	100%	57%	100%	100%
98% in 10 months	75%	86%	71%	50%	100%	100%	100%	100%	78%	100%	57%	100%	100%
100% in 14 months	75%	86%	71%	50%	100%	100%	100%	100%	78%	100%	57%	100%	100%
<b>Parentage - MRJC</b>													
90% in 8 months	47%	25%	64%	37%	64%	27%	21%	47%	50%	31%	40%	42%	53%
98% in 10 months	67%	63%	71%	53%	71%	60%	58%	60%	54%	46%	80%	67%	80%
100% in 14 months	80%	63%	93%	79%	93%	67%	79%	87%	79%	69%	100%	75%	100%

Age of resolved cases – the time between filing and resolution, minus any suspense time if applicable.

Court adopted time guideline (based on suggestion from BJA State Advisory Committee, see LCR 4 official comment): (a) Civil - 90% by 360 days (12 months), 98% by 540 days (18 months); (b) Domestic - 90% by 240 days (8 months), 98% by 300 days (10 months); (c) Probate/Guardianship - 90% by 240 days (8 months), 98% by 540 days (18 months); (d) Adoption/Parentage - 90% by 240 days (8 months); 98% by 300 days (10 months).

“Civil” includes all civil actions (including RAL), except “Matters Filed with Clerk” (Petition for Order Granting Judgment on Confession of Judgment, Tax Warrants, Abstract of Judgment, Foreign Judgment, and Transcript of Judgment), Domestic, Probate, Guardianship, Adoption, and Parentage cases.

Table 4. Pending Caseload at the End of the Month

SEA	Jan	Feb	Mar	Apr	May	Jun	Jul	Aug	Sep	Oct	Nov	Dec
<b>TOTAL - SEA</b>												
2023	8465	8659	8764	8775	8815	9001	9053	9251	9466	9564	9815	9597
2024	9696	9827	9825	9994	10197	10285	10139	10492	10554	10590	10314	10481
2025	10435	10915										
<b>Civil - SEA</b>												
2023	4420	4514	4531	4563	4599	4734	4801	4897	5019	5121	5313	5244
2024	5234	5306	5300	5457	5663	5745	5645	5865	5916	5942	5750	5875
2025	5831	6210										
<b>Domestic - SEA</b>												
2023	2491	2599	2663	2638	2623	2638	2635	2713	2816	2781	2809	2676
2024	2739	2751	2762	2785	2785	2794	2762	2844	2832	2794	2734	2719
2025	2690	2732										
<b>Probate - SEA</b>												
2023	1012	991	1010	1004	1024	1050	1040	1058	1046	1081	1122	1111
2024	1166	1205	1188	1191	1190	1196	1195	1226	1260	1296	1282	1302
2025	1317	1371										
<b>Guardianship - SEA</b>												
2023	295	293	297	317	323	313	314	323	334	326	318	314
2024	306	305	314	301	303	302	295	302	301	317	316	345
2025	354	350										
<b>Adoption - SEA</b>												
2023	179	193	186	180	177	182	178	177	169	172	172	159
2024	155	164	165	157	155	152	154	154	148	148	139	142
2025	155	167										
<b>Parentage - SEA</b>												
2023	68	69	77	73	69	84	85	83	82	83	81	93
2024	96	96	96	103	101	96	88	101	97	93	93	98
2025	88	85										
<b>MRJC</b>												
<b>TOTAL - MRJC</b>												
2023	4686	4773	4873	4957	5025	5117	5150	5205	5358	5336	5570	5485
2024	5678	5809	5947	6143	6301	6268	6372	6558	6541	6504	6359	6457
2025	6335	6540										
<b>Civil - MRJC</b>												
2023	2198	2241	2267	2297	2343	2428	2450	2519	2640	2612	2813	2831
2024	2947	3069	3131	3228	3418	3417	3478	3586	3548	3504	3403	3485
2025	3314	3458										
<b>Domestic - MRJC</b>												
2023	1670	1702	1754	1800	1809	1810	1799	1799	1808	1787	1801	1728
2024	1776	1768	1802	1911	1891	1870	1888	1920	1950	1957	1921	1930
2025	1944	1983										
<b>Probate - MRJC</b>												
2023	409	411	410	428	433	435	451	453	460	480	484	461
2024	492	505	523	532	518	503	530	539	539	551	553	561
2025	589	601										
<b>Guardianship - MRJC</b>												
2023	184	203	225	213	215	219	222	212	229	229	235	227
2024	232	247	259	245	233	235	249	272	274	273	264	269
2025	273	280										
<b>Adoption - MRJC</b>												
2023	79	77	80	87	86	81	84	86	79	85	83	78
2024	78	74	73	70	75	77	76	78	75	76	75	69
2025	73	74										
<b>Parentage - MRJC</b>												
2023	146	139	137	132	139	144	144	136	142	143	154	160
2024	153	146	159	157	166	166	151	163	155	143	143	143
2025	142	144										
<b>SEA/MRJC</b>												
2023	13151	13432	13637	13732	13840	14118	14203	14456	14824	14900	15385	15082
2024	15374	15636	15772	16137	16498	16553	16511	17050	17095	17094	16673	16938
2025	16770	17455										

Pending caseload = cases remain active and unresolved at the end of reporting period, excluding cases on suspense status (in arbitration, appeal).

Table 5. Age of Pending Cases

SEA	Feb 2024	Mar 2024	Apr 2024	May 2024	Jun 2024	Jul 2024	Aug 2024	Sep 2024	Oct 2024	Nov 2024	Dec 2024	Jan 2025	Feb 2025
<b>Civil - SEA</b>													
Median Age (50 <sup>th</sup> percentile) *	142	145	145	143	137	133	136	140	140	144	145	136	130
<b># of Cases in Age Interval</b>													
0 - 120 days (0 - 4 months)	2324	2265	2423	2528	2633	2662	2673	2672	2654	2542	2610	2651	2913
121 - 240 days (5 - 8 months)	1295	1346	1377	1457	1454	1375	1508	1549	1611	1562	1535	1460	1488
241 - 360 days (9 - 12 months)	714	744	763	737	803	799	863	872	850	802	865	879	928
361 - 540 days (13 - 18 months)	485	468	460	498	497	457	473	493	522	516	531	512	541
541 - 720 days (19 - 24 months)	255	242	237	233	206	188	184	185	168	200	193	191	198
> 720 days (> 24 months)	233	235	197	210	152	164	164	145	137	128	141	138	142
<b>Domestic - SEA</b>													
Median Age (50 <sup>th</sup> percentile) *	157	154	148	136	139	141	138	144	143	151	159	158	157
<b># of Cases in Age Interval</b>													
0 - 120 days (0 - 4 months)	1111	1157	1267	1279	1274	1239	1242	1257	1224	1168	1127	1093	1106
121 - 240 days (5 - 8 months)	744	722	636	610	617	654	737	736	736	717	686	687	687
241 - 360 days (9 - 12 months)	393	381	395	422	426	399	378	354	369	397	456	451	476
361 - 540 days (13 - 18 months)	229	237	216	217	227	224	235	243	228	222	222	235	233
> 540 days (> 18 months)	274	265	271	257	250	246	252	242	237	230	228	224	230
<b>Probate - SEA</b>													
Median Age (50 <sup>th</sup> percentile) *	568	621	624	647	663	694	690	679	667	717	722	744	717
<b># of Cases in Age Interval</b>													
0 - 120 days (0 - 4 months)	268	233	256	234	232	215	226	237	248	226	223	230	262
121 - 240 days (5 - 8 months)	113	119	108	112	105	96	102	104	113	97	108	106	107
241 - 360 days (9 - 12 months)	99	89	93	90	88	101	88	94	87	84	85	79	86
361 - 540 days (13 - 18 months)	111	116	104	113	117	105	122	120	129	135	127	124	118
> 540 days (> 18 months)	614	631	630	641	654	678	688	705	719	740	759	778	798
<b>Guardianship - SEA</b>													
Median Age (50 <sup>th</sup> percentile) *	581	583	642	673	703	737	762	776	645	680	497	499	536
<b># of Cases in Age Interval</b>													
0 - 120 days (0 - 4 months)	89	104	100	103	101	93	94	90	102	96	121	123	117
121 - 240 days (5 - 8 months)	25	20	18	14	14	18	20	21	23	25	27	31	30
241 - 360 days (9 - 12 months)	9	9	10	11	13	11	12	8	10	13	12	13	14
361 - 540 days (13 - 18 months)	23	17	14	13	13	7	8	15	14	13	15	17	16
> 540 days (> 18 months)	159	164	159	162	161	166	168	167	168	169	170	170	173
<b>Adoption - SEA</b>													
Median Age (50 <sup>th</sup> percentile) *	539	559	643	674	724	745	778	817	847	1007	944	834	717
<b># of Cases in Age Interval</b>													
0 - 120 days (0 - 4 months)	45	44	42	37	28	31	31	30	30	26	28	40	50
121 - 240 days (5 - 8 months)	14	15	11	11	15	13	15	13	8	7	9	10	12
241 - 360 days (9 - 12 months)	8	6	4	6	7	9	8	6	11	9	10	11	5
361 - 540 days (13 - 18 months)	15	16	13	12	13	12	6	9	8	8	7	7	12
> 540 days (> 18 months)	82	84	87	89	89	89	94	90	91	89	88	87	88
<b>Parentage - SEA</b>													
Median Age (50 <sup>th</sup> percentile) *	141	136	125	136	128	122	111	134	143	164	166	179	193
<b># of Cases in Age Interval</b>													
0 - 120 days (0 - 4 months)	45	45	50	47	46	42	51	45	38	34	35	28	20
121 - 240 days (5 - 8 months)	21	22	24	26	23	21	21	23	29	28	34	31	31
241 - 360 days (9 - 12 months)	18	14	12	14	13	12	14	15	14	17	13	13	18
361 - 540 days (13 - 18 months)	8	10	11	10	9	8	11	9	7	8	11	10	10
> 540 days (> 18 months)	4	5	6	4	5	5	4	5	5	6	5	6	6

\*Age of active pending cases is time elapsed from filing date to the end of the reporting period, minus any suspense time (in appeal, stay, mediation, arbitration) if applicable. The "median age" indicates the age of half (50%) of the pending cases (half are more, half are less) than the number of days indicated in the table.

"Civil" includes all civil actions (including RALJ), except "Matters Filed with Clerk" (Petition for Order Granting Judgment on Confession of Judgment, Tax Warrants, Abstract of Judgment, Foreign Judgment, and Transcript of Judgment), Domestic, Probate, Guardianship, Adoption, and Paternity cases.



Table 5. Age of Pending Cases (cont.)

MRJC	Feb 2024	Mar 2024	Apr 2024	May 2024	Jun 2024	Jul 2024	Aug 2024	Sep 2024	Oct 2024	Nov 2024	Dec 2024	Jan 2025	Feb 2025
<b>Civil - MRJC</b>													
Median Age (50 <sup>th</sup> percentile) *	116	117	106	115	117	115	128	132	129	136	131	128	124
<b># of Cases in Age Interval</b>													
0 - 120 days (0 - 4 months)	1565	1601	1727	1780	1761	1790	1718	1676	1647	1558	1675	1588	1685
121 - 240 days (5 - 8 months)	732	799	788	870	941	943	1101	1089	1044	1005	900	802	831
241 - 360 days (9 - 12 months)	277	274	317	369	411	444	443	461	496	484	559	570	553
361 - 540 days (13 - 18 months)	185	173	168	164	174	180	193	210	219	253	243	243	267
541 - 720 days (19 - 24 months)	86	88	78	87	70	63	70	60	51	58	62	68	74
> 720 days (> 24 months)	224	196	150	148	60	58	61	52	47	45	46	43	48
<b>Domestic- MRJC</b>													
Median Age (50 <sup>th</sup> percentile) *	171	167	162	150	157	154	158	160	162	171	175	177	172
<b># of Cases in Age Interval</b>													
0 - 120 days (0 - 4 months)	683	720	816	804	790	785	764	798	795	751	727	697	726
121 - 240 days (5 - 8 months)	462	420	404	419	417	443	498	489	516	489	488	512	505
241 - 360 days (9 - 12 months)	269	307	299	289	287	272	269	286	275	311	344	351	363
361 - 540 days (13 - 18 months)	144	148	175	166	164	172	174	174	168	166	165	161	164
> 540 days (> 18 months)	210	207	217	213	212	216	215	203	203	204	206	223	225
<b>Probate – MRJC</b>													
Median Age (50 <sup>th</sup> percentile) *	477	479	454	521	581	540	551	581	577	601	622	579	584
<b># of Cases in Age Interval</b>													
0 - 120 days (0 - 4 months)	124	138	156	140	119	125	131	129	141	137	133	152	148
121 - 240 days (5 - 8 months)	54	47	43	41	44	59	56	51	44	44	48	58	72
241 - 360 days (9 - 12 months)	45	43	32	30	34	28	34	31	32	36	41	33	31
361 - 540 days (13 - 18 months)	52	53	53	51	47	53	47	48	43	38	40	39	43
> 540 days (> 18 months)	230	242	248	256	259	265	271	280	291	298	299	307	307
<b>Guardianship - MRJC</b>													
Median Age (50 <sup>th</sup> percentile) *	234	214	237	305	298	267	214	215	228	267	272	277	282
<b># of Cases in Age Interval</b>													
0 - 120 days (0 - 4 months)	100	106	95	80	80	93	112	114	106	93	88	86	92
121 - 240 days (5 - 8 months)	25	27	28	27	29	29	29	26	33	35	40	42	36
241 - 360 days (9 - 12 months)	21	19	17	19	16	15	18	14	16	16	21	23	25
361 - 540 days (13 - 18 months)	16	23	20	19	21	22	20	23	19	18	16	16	17
> 540 days (> 18 months)	85	84	85	88	89	90	93	97	99	102	104	106	110
<b>Adoption – MRJC</b>													
Median Age (50 <sup>th</sup> percentile) *	1460	1473	1521	1319	1293	1352	1299	1385	1360	1446	1772	1564	1564
<b># of Cases in Age Interval</b>													
0 - 120 days (0 - 4 months)	5	8	7	11	13	11	12	9	7	7	9	14	12
121 - 240 days (5 - 8 months)	7	5	3	3	1	2	3	5	8	6	4	2	3
241 - 360 days (9 - 12 months)	3	3	4	4	4	4	3	2	0	1	1	2	4
361 - 540 days (13 - 18 months)	6	5	1	2	3	3	4	5	7	5	4	3	3
> 540 days (> 18 months)	53	52	55	55	56	56	56	54	54	56	51	52	52
<b>Parentage – MRJC</b>													
Median Age (50 <sup>th</sup> percentile) *	168	168	175	170	178	139	137	144	154	164	173	171	192
<b># of Cases in Age Interval</b>													
0 - 120 days (0 - 4 months)	53	48	47	68	69	64	74	61	56	57	40	44	44
121 - 240 days (5 - 8 months)	44	55	53	46	39	37	41	54	55	49	63	54	50
241 - 360 days (9 - 12 months)	26	32	31	27	31	27	22	16	14	19	18	27	31
361 - 540 days (13 - 18 months)	15	15	16	17	17	16	18	18	12	13	14	10	8
> 540 days (> 18 months)	8	9	10	8	10	7	8	6	6	5	8	7	11

\*Age of active pending cases is time elapsed from filing date to the end of the reporting period, minus any suspense time (in appeal, stay, mediation, arbitration) if applicable. The “median age” indicates the age of half (50%) of the pending cases (half are more, half are less) than the number of days indicated in the table.

“Civil” includes all civil actions (including RALJ), except “Matters Filed with Clerk” (Petition for Order Granting Judgment on Confession of Judgment, Tax Warrants, Abstract of Judgment, Foreign Judgment, and Transcript of Judgment), Domestic, Probate, Guardianship, Adoption, and Parentage cases.

Table 6. SEA/MRJC Filings, Resolutions, and Pending Caseload as a Percentage of All Cases

	Feb 2024	Mar 2024	Apr 2024	May 2024	Jun 2024	Jul 2024	Aug 2024	Sep 2024	Oct 2024	Nov 2024	Dec 2024	Jan 2025	Feb 2025
<b>Total Filings</b>	<b>3343</b>	<b>3397</b>	<b>3491</b>	<b>3670</b>	<b>3243</b>	<b>3533</b>	<b>3338</b>	<b>3471</b>	<b>3812</b>	<b>2948</b>	<b>3262</b>	<b>3903</b>	<b>3573</b>
SEA - # of Cases Filed	1961	2004	2065	2243	2016	2054	2049	2079	2300	1820	2016	2357	2190
MRJC - # of Cases Filed	1382	1393	1426	1427	1227	1479	1289	1392	1512	1128	1246	1546	1383
SEA %	59%	59%	59%	61%	62%	58%	61%	60%	60%	62%	62%	60%	61%
MRJC %	41%	41%	41%	39%	38%	42%	39%	40%	40%	38%	38%	40%	39%
<b>Total Resolutions</b>	<b>3038</b>	<b>3325</b>	<b>3047</b>	<b>3306</b>	<b>2981</b>	<b>3308</b>	<b>3106</b>	<b>3194</b>	<b>3596</b>	<b>3036</b>	<b>3539</b>	<b>3675</b>	<b>3405</b>
SEA - # of Cases Resolved	1837	2033	1854	2014	1805	2034	1928	1891	2124	1858	2167	2164	2028
MRJC - # of Cases Resolved	1201	1292	1193	1292	1176	1274	1178	1303	1472	1178	1372	1511	1377
SEA %	60%	61%	61%	61%	61%	61%	62%	59%	59%	61%	61%	59%	60%
MRJC %	40%	39%	39%	39%	39%	39%	38%	41%	41%	39%	39%	41%	40%
<b>Total Pending Cases</b>	<b>15636</b>	<b>15772</b>	<b>16137</b>	<b>16498</b>	<b>16553</b>	<b>16511</b>	<b>17050</b>	<b>17095</b>	<b>17094</b>	<b>16673</b>	<b>16938</b>	<b>16770</b>	<b>17455</b>
SEA - # of Cases Pending	9827	9825	9994	10197	10285	10139	10492	10554	10590	10314	10481	10435	10915
MRJC - # of Cases Pending	5809	5947	6143	6301	6268	6372	6558	6541	6504	6359	6457	6335	6540
SEA %	63%	62%	62%	62%	62%	61%	62%	62%	62%	62%	62%	62%	63%
MRJC %	37%	38%	38%	38%	38%	39%	38%	38%	38%	38%	38%	38%	37%

All civil actions (including RALJ), except "Matters Filed with Clerk" (Petition for Order Granting Judgment on Confession of Judgment, Tax Warrants, Abstract of Judgment, Foreign Judgment, and Transcript of Judgment), Domestic, Probate, Guardianship, Adoption, and Parentage cases.

## Appendix Glossary and Definition

### **Active Status**

A case is active if it is not on suspense status (see Suspense Status).

### **Adoption and Parentage Cases (case type 5)**

ADP - Adoption  
CFI - Confidential Intermediary  
CHN - Confidential Change of Name  
DIP - Disestablishment of Parentage  
MDS - Modification/Support Only  
MOD - Modification  
MSC - Miscellaneous  
OAA - Open Adoption Agreement  
PAD - De Facto Parentage  
PAG - Pre Birth Establish Parentage Genetic  
PAS - Establish Parentage Gestational Surrogacy  
PAT - Parentage  
PPR - Initial Pre Placement Report  
PRC - Parentage Rescission/Challenge  
PUR - Parentage (URES/AUIFSA)  
REL - Relinquishment  
ROB - Relocation Objection  
TER - Termination of Parental Rights

### **Case**

A case is defined as a filing with an assigned case number.

### **Civil Cases (case type 2, no RALJ)**

ALR - Administrative Law Review  
ALRLI - L&I Administrative Law Review  
AOD - Assurance of Discontinuance  
ASB - Asbestos  
ASP - Asbestos Personal Injury  
ASW - Asbestos Wrongful Death  
BAT - Petition to Appeal/Amend Ballot Title  
CAA - Motion to Confirm/Compel Arbitration Award  
CFJ - Petition for Order Granting Judgment on Confession of Judgment  
CHN - Non Confidential Change of Name  
COL - Collection  
COM - Commercial  
CON - Condemnation  
CRP - Certificate of Restoration of Opportunity  
CRR - Petition for Certificate of Rehabilitation  
DOL - Appeal Licensing Revocation  
DSF - Notice of Deposit of Surplus Funds from Trustee's Sale of Real Property  
DVP - Domestic Violence  
ECP - Enforcement of Canadian Protection Order  
EOM - Emancipation of Minor  
FOR - Foreclosure  
FPO - Foreign Protection Order  
FVL - Motion to Show Cause /Fruivolous Lien  
HAR - Unlawful Harassment  
HSI - Application for Health & Safety Inspection  
INJ - Injunction  
IPL - Complaint for Interpleader  
LUP - Land Use Petition  
MAL - Other Malpractice  
MED - Medical Malpractice  
MER - Meretricious Relationships  
MHA - Malicious Harassment  
MSC - Miscellaneous  
MST - Minor Settlement  
MWP - Minor Work Permit  
NJF - Non Judicial Filing  
OSS - Petition to Issue Out of State Subpoena  
PBC - Petition for Birth Certificate Change  
PBJ - Petition for Justification /Bail Bond Company  
PCC - Petition for Civil Commitment

PFA - Property Fairness Act  
PIN - Personal Injury  
PPT - Petition for Perpetuation of Testimony  
PRA - Public Records Act  
PRG - Property Damage /Gangs  
PRP - Property Damage  
PVO - Petition for Vehicle Ownership  
QTI - Quiet Title  
RCV - Petition to Appoint Receiver  
RDR - Relief from Duty to Register  
RFR - Restoration of Firearms Rights  
RRC - Remove Restricted Covenant  
SCA - Small Claims Appeal  
SDR - School District /Required Action Plan  
SER - Subdivision Election Process Law Review  
SPC - Seizure of Property From Commission of a Crime  
SPR - Seizure of Property Resulting From a Crime  
STK - Stalking Protection  
SXP - Sexual Assault Protection  
TMV - Tort /Motor Vehicle  
TSS - Petition for Approval of Transfer of Structured Settlement  
TTO - Tort /Other  
UND - Unlawful Detainer  
VAP - Vulnerable Adult Protection Order  
VEP - Voter Election Process Law Review  
VVT - Victims of Motor Vehicle Theft /Civil Action  
WDE - Wrongful Death  
WHC - Writ of Habeas Corpus  
WMW - Miscellaneous Writs  
WRM - Writ of Mandamus  
WRR - Writ of Restitution  
WRV - Writ of Review  
XRP - Extreme Risk Protection Order

### **Completion**

A case is completed if dispositive document is filed with the court following resolution.

### **Domestic Cases (case type 3)**

CIR - Committed Intimate Relationship  
CUS - Child Custody  
DIC - Dissolution w/ Children  
DIN - Dissolution no Children  
DIS - Dissolution  
DPC - Dissolution of Domestic Partnership w/ Children  
DPN - Dissolution of Domestic Partnership /No Children  
FJU - Out of State Support Registration /Foreign Judgment  
INC - Annulment /Inv of Marriage w/ Children  
IND - Annulment /Inv of Domestic Partnership w/ Children  
INP - Invalidity, Domestic Partnership  
INV - Annulment /Invalidity  
MDS - Modification/Support Only  
MOD - Modification  
MSC - Miscellaneous  
MWA - Mandatory Wage Assignment  
OSC - Out of State Custody  
PPS - Parenting Plan / Child Support  
PSO - Petition for Entry of KC Support Order  
RCV - Relative Child Visitation  
RIC - Reciprocal, Resp in County  
ROB - Relocation /Objection  
ROC - Reciprocal, Resp out of County  
RVC - Relative Child Visits  
SDC - Legal Separation, Domestic Partnership w/ Children  
SEC - Legal Separation w/ Children  
SEP - Legal Separation  
SPD - Legal Separation, Domestic Partnership /No Children  
TSS - Structured Settlement

EFC - Extended Foster Care, Dependency  
GFC - Guardianship Foster Children  
RPR - Reinstatement of Parental Rights  
RVS - Relative Visitation  
TRU - Truancy  
VYG - Vulnerable Youth Guardianship

#### ***Probate and Guardianship Cases (case type 4)***

ABS - Absentee  
AOS - Affidavit of Successor  
ASE - Affidavit of Small Estate  
DSC - Disclaimer  
EST - Estate  
FNW - Foreign Will  
G/E - Guardianship/Estate  
GDE - Guardianship of the Estate  
GDN - Guardianship  
GDP - Guardianship of the Person  
LGD - Limited Guardianship  
LGE - Limited Guardianship of the Estate  
LGP - Limited Guardianship of the Person  
MGD - Minor Guardianship  
MSC - Miscellaneous  
MST - Minor Settlement  
NJB - Non Judicial Binding/TEDRA Agreement  
NNC - Non Probate Notice to Creditor  
POA - Petition for Relief (RCW 11.94) /Power of Attorney  
RGR - Registration of Guardianship  
RTR - Registration of Trust /Trust Situs  
SNT - Special Needs Trust  
TDR - Trust/Estate Dispute Resolution  
TRS - Trust  
WLL - Will Only

#### ***Resolution***

A case is resolved if all issues in the complaint are fully adjudicated.

#### ***Suspended Case***

A case is placed in suspense status from active status during the reporting period.

#### ***Suspense Status***

A case is on suspense status if it is on warrant, appeal, stay, mediation, arbitration ("Deferred Prosecution" is not a suspense status, but is treated as a resolution).