



King County

Department of Judicial Administration

Catherine Cornwall

Director and Superior Court Clerk

(206) 296-9300 (206) 296-0100 TTY/TDD

King County Superior Court

Quarterly Statistical Report

First Quarter 2025

Department of Judicial Administration

Prepared by: Shiquan Liao, Ph.D., Statistician

April 15, 2025

Report #: QTR-2025-Q1

Seattle:

516 Third Avenue Room E609
Seattle, WA 98104-2386

Regional Justice Center:

401 Fourth Avenue North Room 2C
Kent, WA 98032-4429

Juvenile Division:

1211 East Alder Room 3015
Seattle, WA 98122-5598

Quarterly Report Summary

King County Superior Court

- **Criminal Cases.** The criminal filings in the first quarter of 2025 were 1,223 cases, showing a 4.8% decrease from 2024 (-4.8%). MRJC accounted for 39% of the criminal cases filed in 2025. The resolutions of criminal cases in the same period matched the filing pace, totaling 1,421 cases. The pending criminal caseload has stayed just above 4,000 cases in the last 12 months. At the end of March 2025, 4,143 criminal cases (excluding RALJ) remained active. Of the 4,143 pending criminal cases, 39% were the MRJC cases.
- **Civil Cases.** Filings in civil cases (case type 2) continued an upwards trend since the third quarter of 2023. The filings in case type 2 (general civil) in the first quarter of 2025 were significantly higher than that in the same period in 2024, showing a 29% increase from 2024 and totaling 7,454 cases. The increase in civil filings was primarily due to the rise in unlawful detainer cases and civil protection petitions. MRJC accounted for 41% of the civil cases filed in 2025. The overall civil resolutions were lower than the filing volume in the same period, resulting an increase in active civil pending caseload. At the end of March 2025, there were 9,714 civil cases pending disposition, with MRJC having 35% of the pending civil caseload.
- **Domestic Cases.** Domestic case (case type 3) filings in the first quarter of 2025 were comparable with that in 2024, with 2.3% increase only in the same period. A total of 1,660 domestic cases were filed in the first three months of 2025, and 40% were filed in the MRJC. The resolutions of domestic cases fell slightly behind the filing volume in 2025. At the end of March 2025, the pending domestic caseload was 4,810 cases, with 42% being the MRJC cases. The pending domestic cases is showing an upwards trend in recent quarters.
- **ITA Cases.** The filings of ITA cases in 2025 remained at a high level, but seemed to have reached a plateau. A total of 1,332 ITA cases were filed in the first quarter of 2025, just slightly lower than that in the same period of 2024 (-4.2%). The ITA filing volume remains over 5,000 cases in the last 5 years. There were 527 ITA cases remaining to be adjudicated at the end of March 2025.
- **Juvenile Dependency/Termination (DEP/TER) and At-risk Youth (ARY)/Child-in-Need of Service (CHINS) Cases.** In the first quarter of 2025, termination filings were the same as that in the same period of 2024. On the other hand, filings in dependency, ARY/CHINS/others were up 54%, and 83% respectively from 2024. At the end of March 2025, the numbers of cases pending disposition in the non-Offense juvenile categories were: 339 dependency cases, 104 termination cases, 238 ARY/CHINS/Other cases, and 2,063 truancy cases.
- **Juvenile Offense Cases.** The juvenile offense filings in the first quarter of 2025 showed no change from the same period of 2024, with a total of 233 juvenile offense cases filed in 2025 so far. The court disposed 187 juvenile offense cases, a volume behind the filing pace in the year. At the end of March 2025, there were 96 pending juvenile offense cases. The pending volume is increasing noticeably since the beginning of 2024 and has almost doubled from the low level seen in 2022.
- **Pro Tem Use.** In the first quarters of 2025, the daily Pro Tem use by the court was 3.5 FTEs on average.
- **Post-resolution Modifications (Table 1-A).** In the first quarter of 2025, there were 1187 post-resolution modifications filed (both parenting plan and relocation modifications).
- **Active re-opened cases and family law modification cases (Table 4-A).** At the end of March 2025, 968 re-opened cases and 372 family law modification cases remained active.

Table 1. Year-to-Date Filing Activity
King County Superior Court

Reporting Category	Year-to-Date (Jan – Mar) and Annual Filing Activity ⁽¹⁾					2024-2025 change (+ means "increase")		% of 2025 Total Filing ⁽²⁾
	2021	2022	2023	2024	2025	Cases	Percentage	
Total (incl. RALJ)								
Year-to-Date Filing	10397	10783	12228	13811	15255	+1444	+10.5%	
Annual Filing	40249	44424	49172	55336				
Criminal (excl. RALJ)								
Year-to-Date Filing	1198	1196	1353	1285	1223	-62	-4.8%	8.0%
Annual Filing	4658	4956	4896	5169				
Civil (excl. RALJ)								
Year-to-Date Filing	3581	3618	4246	5773	7454	+1681	+29.1%	48.9%
Annual Filing	13624	15749	19776	24855				
Domestic								
Year-to-Date Filing	1527	1466	1689	1622	1660	+38	+2.3%	10.9%
Annual Filing	6184	5999	6369	6533				
Probate								
Year-to-Date Filing	2015	2071	2100	2160	1999	-161	-7.5%	13.1%
Annual Filing	7478	7747	7565	7673				
Guardianship								
Year-to-Date Filing	204	230	279	284	261	-23	-8.1%	1.7%
Annual Filing	725	1057	958	1027				
Adoption								
Year-to-Date Filing	89	100	89	79	99	+20	+25.3%	0.6%
Annual Filing	347	363	318	274				
Parentage								
Year-to-Date Filing	103	87	74	80	67	-13	-16.3%	0.4%
Annual Filing	401	347	333	354				
ITA – Civil Commitment								
Year-to-Date Filing	1313	1337	1449	1391	1332	-59	-4.2%	8.7%
Annual Filing	5159	5665	5541	5438				
Juvenile Dependency (DEP)								
Year-to-Date Filing	111	129	105	82	126	+44	+53.7%	0.8%
Annual Filing	361	377	302	420				
Juvenile Termination (TER)								
Year-to-Date Filing	46	39	45	26	26	0	0%	0.2%
Annual Filing	205	188	168	128				
ARY/CHINS/OTHERS								
Year-to-Date Filing	60	45	118	126	231	+105	+83.3%	1.5%
Annual Filing	251	301	479	709				
Juvenile Truancy								
Year-to-Date Filing	0	336	459	638	510	-128	-20.1%	3.3%
Annual Filing	61	1121	1560	1570				
Juvenile Offense								
Year-to-Date Filing	127	100	194	233	233	0	0%	1.5%
Annual Filing	356	500	723	941				
Criminal RALJ								
Year-to-Date Filing	5	11	14	16	25	+9	+56.3%	0.2%
Annual Filing	49	53	58	72				
Civil RALJ								
Year-to-Date Filing	18	18	14	16	9	-7	-43.8%	0.1%
Annual Filing	58	55	63	63				
Matters Filed with Clerk ⁽³⁾								
Year-to-Date Filing	485	851	1418	1135	1611	+476	+41.9%	
Annual Filing	2882	5169	5464	4745				

(1) New filings only (based on filing date). (2) New filings of each reporting category as percentage of "Year-to-Date Filing".
(3) "Matters Filed with Clerk" not included in the "Total".

Chart 1-A. Quarterly Filing Activity
Total Judicial Cases Only ("Matters Filed with Clerk" excluded)

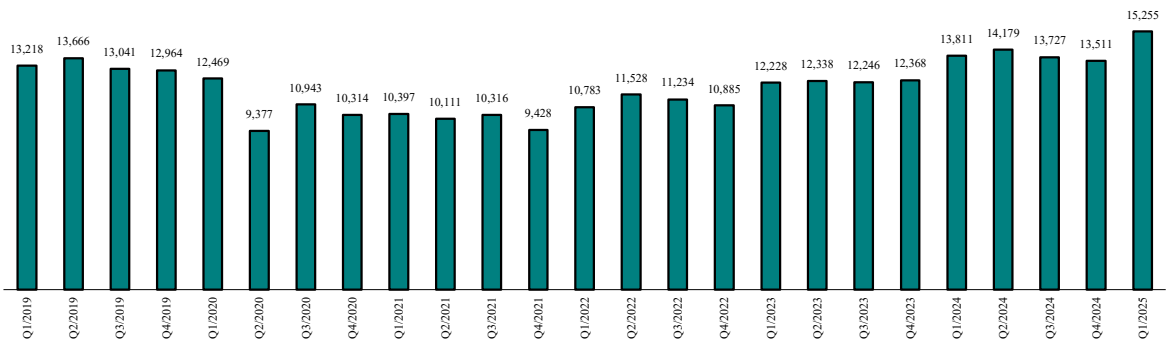


Chart 1-B. Quarterly Filings: Criminal and Juvenile Offense Cases

■ Criminal ■ Juvenile Offenses

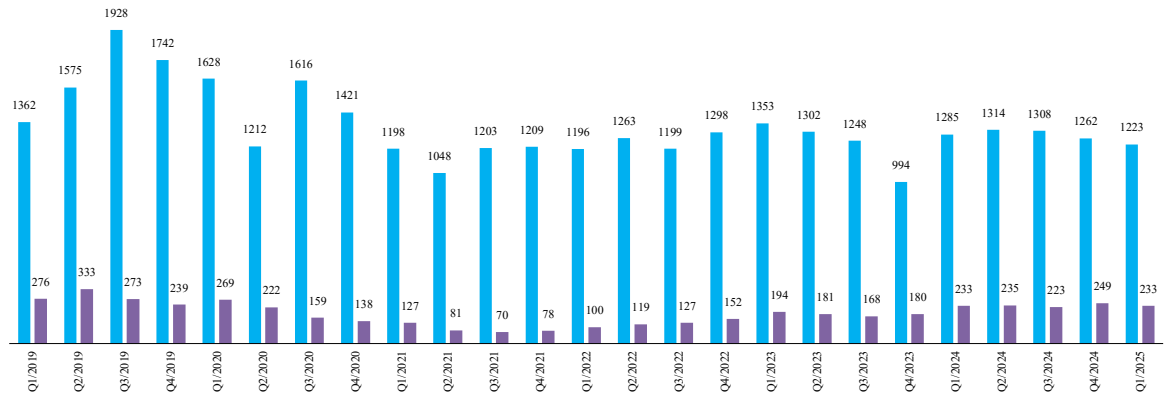
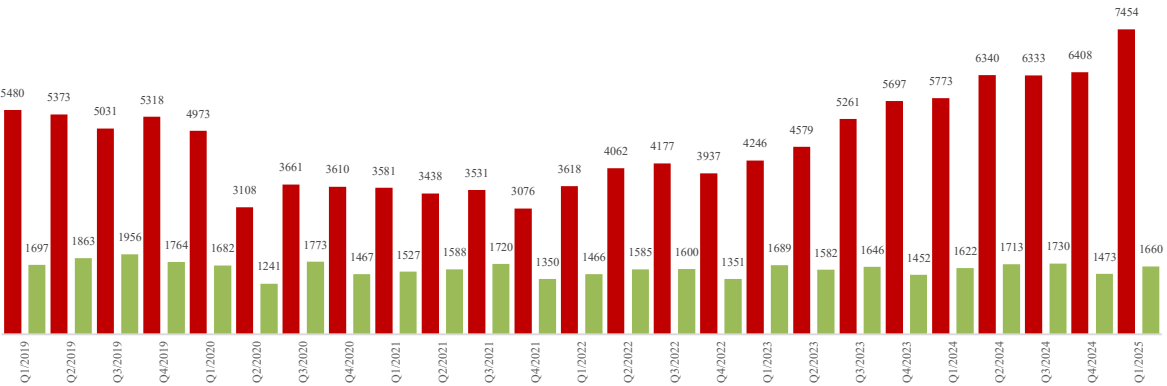


Chart 1-C. Quarterly Filings: Civil and Domestic Cases

■ Civil ■ Domestic



* Note: "Civil" is specifically defined in this report. The category of "Civil" does not include the following case types: domestic, probate, guardianship, adoption, Parentage, ITA (civil commitment), juvenile cases (dependency, at-risk youth, child-in-need of service), civil RAL, and tax filings that don't require judicial resources ("matters filed with clerk").

Table 1-A. Post-Resolution Modifications Filed (Domestic and Parentage Cases)

		2023Q1			2023Q2			2023Q3			2023Q4			Year 2023		
Location	Case Type	DMOD	DTBA	Total	DMOD	DTBA	Total	DMOD	DTBA	Total	DMOD	DTBA	Total	DMOD	DTBA	Total
KNT	Domestic	7	52	59	11	45	56	8	55	63	5	45	50	31	197	228
	Parentage		8	8	1	2	3	1	5	6		4	4	2	19	21
KNT Total		7	60	67	12	47	59	9	60	69	5	49	54	33	216	249
SEA	Domestic	7	58	65	24	47	71	18	46	64	10	42	52	59	193	252
	Parentage		4	4	1	4	5		6	6		3	3	1	17	18
SEA Total		7	62	69	25	51	76	18	52	70	10	45	55	60	210	270
KNT/SEA Total		14	122	136	37	98	135	27	112	139	15	94	109	93	426	519
		2024Q1			2024Q2			2024Q3			2024Q4			Year 2024 (YTD)		
Location	Case Type	Reloc-ation	Parent Mod	Total	Reloc-ation	Parent Mod	Total	Reloc-ation	Parent Mod	Total	Reloc-ation	Parent Mod	Total	Reloc-ation	Parent Mod	Total
KNT	Domestic	8	31	39	12	40	52	11	47	58	5	34	39	36	152	188
	Parentage	1		1		3	3	0	2	2	2	3	5	3	8	11
KNT Total		9	31	40	12	43	55	11	49	60	7	37	44	39	160	199
SEA	Domestic	14	51	65	19	59	78	10	44	54	14	40	54	57	194	251
	Parentage	0	6	6	2	1	3	1	5	6	0	2	2	3	14	17
SEA Total		14	57	71	21	60	81	11	49	60	14	42	56	60	208	268
KNT/SEA Total		23	88	111	33	103	136	22	98	120	21	79	100	99	368	467
		2025Q1			2025Q2			2025Q3			2025Q4			Year 2025 (YTD)		
Location	Case Type	Reloc-ation	Parent Mod	Total	Reloc-ation	Parent Mod	Total	Reloc-ation	Parent Mod	Total	Reloc-ation	Parent Mod	Total	Reloc-ation	Parent Mod	Total
KNT	Domestic	5	35	40										5	35	40
	Parentage	1	3	4										1	3	4
KNT Total		6	38	44										6	38	44
SEA	Domestic	12	58	70										12	58	70
	Parentage	1	3	4										1	3	4
SEA Total		13	61	74										13	61	74
KNT/SEA Total		19	99	118										19	99	118

Table 2. Number of Cases Resolved and Resolution Category (%)
King County Superior Court

Reporting Category	Q2/23	Q3/23	Q4/23	Q1/24	Q2/24	Q3/24	Q4/24	Q1/25
Total Resolutions (excl. "Matters Filed with Clerk")	11564	11615	11720	12808	12909	13202	13511	14465
Criminal (excl. RALJ): # Resolved	1309	1338	1205	1291	1296	1355	1351	1421
Resolved by Jury Trial	1.8%	1.4%	2.3%	2.2%	1.5%	2.3%	2.0%	2.3%
Resolved by Non-Jury Trial	0.4%	0.9%	0.2%	0.1%	0.7%	0.1%	0.1%	0.2%
Resolved by Guilty Plea	70.7%	67.6%	66.0%	64.4%	68.4%	72.0%	72.0%	66.7%
Dismissal	26.7%	30.0%	30.8%	32.9%	29.2%	23.5%	24.7%	28.3%
Others	0.4%	0.1%	0.7%	0.3%	0.3%	2.1%	1.1%	2.5%
Civil: # Resolved	4383	4747	4917	5517	5427	5871	6494	7047
Resolved by Jury Trial	0.4%	0.3%	0.3%	0.3%	0.2%	0.1%	0.2%	0.2%
Resolved by Non-Jury Trial	0.2%	0.2%	0.3%	0.2%	0.3%	0.2%	0.3%	0.3%
Summary Judgment	1.2%	0.7%	1.1%	1.0%	1.0%	1.3%	1.0%	0.9%
Default/ Uncontested	46.0%	52.8%	51.5%	49.2%	50.7%	49.4%	43.4%	43.9%
Arbitration	3.1%	1.4%	2.3%	1.4%	1.5%	1.3%	1.3%	1.0%
Settlement/Dismissal	43.6%	41.3%	41.0%	40.5%	38.9%	42.7%	48.0%	48.0%
Closure by Clerk	4.1%	2.7%	2.6%	6.6%	6.8%	4.2%	5.3%	5.2%
Others	1.3%	0.7%	0.8%	0.8%	0.6%	0.7%	0.5%	0.6%
Domestic: # Resolved	1564	1488	1534	1513	1571	1592	1620	1566
Resolved by Trial	3.8%	4.2%	5.6%	4.0%	5.9%	5.1%	4.4%	4.3%
Default/ Uncontested	8.6%	10.2%	8.0%	8.7%	6.5%	9.3%	6.7%	8.7%
Settlement /Dismissal	86.6%	84.2%	85.6%	86.3%	86.6%	83.9%	85.9%	84.7%
Closure by Clerk	0.9%	1.1%	0.5%	0.8%	0.8%	1.4%	2.8%	1.8%
Others	0.1%	0.3%	0.3%	0.3%	0.2%	0.3%	0.2%	0.5%
Probate: # Resolved	1852	1656	1749	2002	2002	1751	1657	1895
Personal Rep. Appointed	68.6%	67.3%	69.1%	68.7%	69.1%	69.5%	67.6%	67.0%
Dismissal	3.5%	4.9%	6.1%	4.1%	3.2%	4.6%	5.3%	5.1%
Closure by Clerk	0.1%	0.4%	0.0%	0.0%	0.0%	0.1%	0.0%	0.1%
Others	27.9%	27.4%	24.8%	27.2%	27.8%	25.8%	27.2%	27.9%
Guardianship: # Resolved	248	221	233	238	252	207	224	228
Guardian Appointed	57.3%	57.0%	52.4%	63.4%	66.3%	66.2%	65.2%	69.3%
Dismissal	24.2%	25.3%	37.3%	27.7%	16.3%	18.4%	19.2%	17.5%
Closure by Clerk	0.0%	0.0%	0.0%	0.0%	0.0%	0.0%	0.0%	0.0%
Others	18.5%	17.6%	10.3%	8.8%	17.5%	15.5%	15.6%	13.2%
Adoption: # Resolved	89	84	73	63	71	71	82	74
Resolved by Trial	0.0%	0.0%	1.4%	0.0%	0.0%	0.0%	0.0%	0.0%
Uncontested	2.2%	0.0%	0.0%	0.0%	0.0%	0.0%	0.0%	0.0%
Settlement /Dismissal	92.1%	94.0%	98.6%	88.9%	98.6%	94.4%	86.6%	100.0%
Closure by Clerk	4.5%	6.0%	0.0%	11.1%	1.4%	5.6%	13.4%	0.0%
Others	1.1%	0.0%	0.0%	0.0%	0.0%	0.0%	0.0%	0.0%
Parentage: # Resolved	71	81	64	74	97	97	77	71
Resolved by Trial	4.2%	3.7%	12.5%	6.8%	7.2%	3.1%	1.3%	2.8%
Summary Judgment	32.4%	39.5%	20.3%	31.1%	34.0%	36.1%	35.1%	15.5%
Default/ Uncontested	15.5%	21.0%	18.8%	17.6%	15.5%	9.3%	15.6%	32.4%
Settlement/Dismissal	47.9%	34.6%	46.9%	43.2%	43.3%	45.4%	41.6%	47.9%
Closure by Clerk	0.0%	1.2%	0.0%	0.0%	0.0%	6.2%	6.5%	0.0%
Others	0.0%	0.0%	1.6%	1.4%	0.0%	0.0%	0.0%	1.4%
ITA (civil commitment): # Resolved	1386	1271	1273	1437	1304	1311	1424	1295
Court Decision to Commit	22.0%	24.7%	21.8%	20.2%	24.4%	23.6%	23.3%	27.1%
Closed by Court	0.0%	0.0%	0.1%	0.0%	0.0%	0.0%	0.1%	0.0%
Dismissal	13.8%	13.5%	12.6%	9.8%	8.4%	9.0%	10.3%	10.3%
Uncontested	64.2%	61.8%	65.6%	70.0%	67.2%	67.4%	66.3%	62.5%
Juv. Dependency: # Resolved	92	86	70	53	59	82	61	109
Finding of Dependency	63.0%	59.3%	64.3%	77.4%	69.5%	73.2%	72.1%	56.9%
Dismissal	35.9%	40.7%	35.7%	22.6%	30.5%	26.8%	27.9%	43.1%
Others	1.1%	0.0%	0.0%	0.0%	0.0%	0.0%	0.0%	0.0%

Table 2 (cont.). Number of Cases Resolved and Resolution Category (%)
King County Superior Court

Reporting Category	Q2/23	Q3/23	Q4/23	Q1/24	Q2/24	Q3/24	Q4/24	Q1/25
Juv. Terminations: # Resolved	71	53	51	42	46	44	31	16
Finding of Dependency	84.5%	88.7%	88.2%	85.7%	87.0%	75.0%	83.9%	93.8%
Dismissal	15.5%	11.3%	11.8%	14.3%	13.0%	22.7%	16.1%	6.3%
Others	0.0%	0.0%	0.0%	0.0%	0.0%	2.3%	0.0%	0.0%
ARY/CHINS/OTHER: # Resolved	103	110	103	129	148	150	176	216
Approve of Petition	79.6%	82.7%	82.5%	79.8%	91.2%	91.3%	89.2%	92.6%
Dismissal	20.4%	17.3%	17.5%	20.2%	8.8%	8.7%	10.8%	6.9%
Others	0.0%	0.0%	0.0%	0.0%	0.0%	0.0%	0.0%	0.5%
Juvenile Truancy: # Resolved	168	294	236	224	552	370	244	306
Approve of Petition	24.4%	5.4%	8.1%	13.8%	19.2%	3.5%	5.3%	16.3%
Dismissal	75.6%	94.6%	91.9%	86.2%	80.8%	93.2%	94.7%	81.7%
Others	0.6%	0.0%	0.0%	0.0%	0.0%	3.2%	0.0%	2.0%
Juvenile Offense: # Resolved	208	161	184	178	158	253	213	187
Resolved by Trial (Fact Finding)	0.0%	0.6%	0.0%	0.0%	0.6%	0.6%	0.9%	0.0%
Resolved by Guilty Plea	41.8%	34.8%	44.0%	31.5%	33.5%	37.9%	34.7%	39.6%
Dismissal	37.0%	41.0%	35.3%	51.1%	41.1%	45.1%	46.9%	42.2%
Deferred Disposition (DDSP)	11.5%	21.7%	15.8%	12.4%	17.1%	12.3%	11.7%	11.2%
Others (including Deferred Prosecution)	9.6%	1.9%	4.9%	5.1%	7.6%	4.7%	5.6%	7.0%
Criminal RALJ: # Resolved	11	8	16	23	12	29	14	16
RALJ Decision	54.5%	62.5%	87.5%	60.9%	75.0%	55.2%	64.3%	87.5%
Dismissal	36.4%	37.5%	12.5%	39.1%	25.0%	17.2%	35.7%	12.5%
Others	9.1%	0.0%	0.0%	0.0%	0.0%	27.6%	0.0%	0.0%
Civil RALJ: # Resolved	9	17	12	24	19	19	17	18
RALJ Decision	44.4%	35.3%	25.0%	25.0%	26.3%	21.1%	47.1%	22.2%
Dismissal	55.6%	64.7%	75.0%	75.0%	68.4%	73.7%	41.2%	77.8%
Others	0.0%	0.0%	0.0%	0.0%	5.3%	5.3%	11.8%	0.0%

Chart 2-A. Quarterly Resolutions
Total Judicial Cases Only ("Matters Filed with Clerk" excluded)

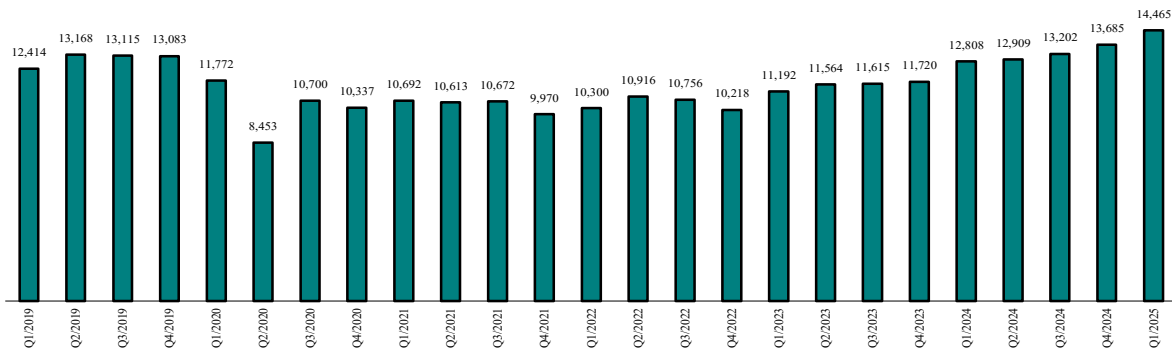


Chart 2-B. Quarterly Resolutions: Criminal and Juvenile Offense Cases

■ Criminal ■ Juvenile Offenses

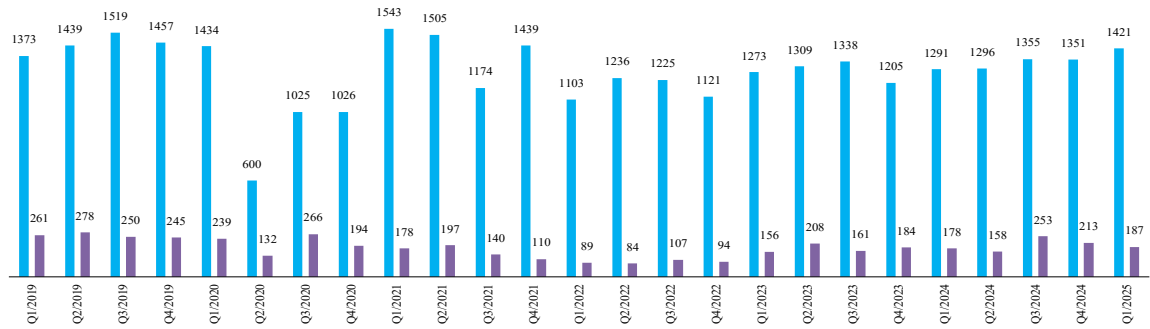
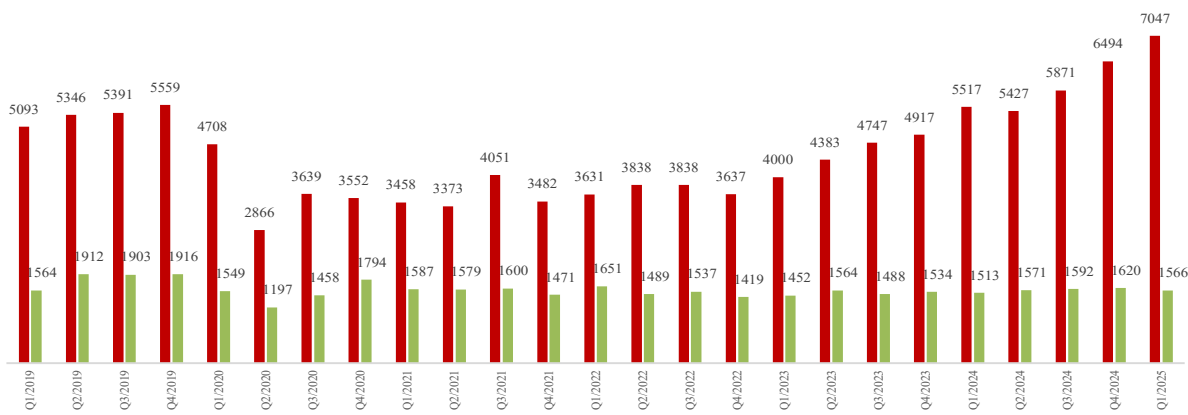


Chart 2-C. Quarterly Resolutions: Civil and Domestic Cases

■ Civil ■ Domestic



Note: "Civil" is specifically defined in this report. The category of "Civil" does **not** include the following case types: domestic, probate, guardianship, adoption, Parentage, ITA (civil commitment), juvenile cases (dependency, at-risk youth, child-in-need of service), civil RAL, and tax filings that don't require judicial resources ("matters filed with clerk").

Table 3. Age of Resolved Cases
King County Superior Court

Reporting Category	Age of Cases at Resolution							
	Q2/23	Q3/23	Q4/23	Q1/24	Q2/24	Q3/24	Q4/24	Q1/25
Criminal (excl. RALJ)								
Age (days)								
50% Cases Resolved by Day	212	193	214	252	230	214	189	220
90% Cases Resolved by Day	806	809	842	774	773	709	686	753
Comparison with Court Standard of								
90% in 4 months	35%	37%	36%	29%	34%	33%	37%	31%
98% in 6 months	44%	48%	46%	39%	42%	45%	49%	43%
100% in 9 months	58%	59%	59%	53%	56%	58%	62%	58%
Civil (excl. RALJ)								
Age (days)								
50% Cases Resolved by Day	43	43	38	63	49	57	67	57
90% Cases Resolved by Day	371	346	345	399	430	353	360	357
Comparison with Court Standard of								
90% in 12 months	89%	91%	91%	88%	87%	90%	90%	90%
98% in 18 months	95%	97%	97%	94%	92%	96%	96%	97%
100% in 24 months	97%	98%	98%	97%	94%	98%	98%	99%
Domestic								
Age (days)								
50% Cases Resolved by Day	187	188	210	204	197	185	180	216
90% Cases Resolved by Day	439	448	488	493	467	512	482	492
Comparison with Court Standard of								
90% in 8 months	60%	60%	56%	58%	57%	57%	59%	54%
98% in 10 months	70%	68%	67%	66%	68%	65%	69%	62%
100% in 14 months	89%	88%	85%	86%	86%	84%	85%	85%
Probate								
Age (days)								
50% Cases Resolved by Day	2	3	3	2	3	3	3	4
90% Cases Resolved by Day	31	59	33	28	54	50	58	56
Comparison with Court Standard of								
90% in 8 months	99%	97%	99%	99%	98%	99%	98%	98%
98% in 18 months	99%	99%	100%	100%	99%	100%	99%	99%
100% in 36 months	100%	100%	100%	100%	100%	100%	100%	100%
Guardianship								
Age (days)								
50% Cases Resolved by Day	63	62	63	63	64	66	63	68
90% Cases Resolved by Day	135	128	170	140	158	187	184	182
Comparison with Court Standard of								
90% in 8 months	96%	96%	95%	95%	94%	95%	93%	93%
98% in 18 months	100%	100%	99%	100%	99%	99%	99%	98%
100% in 36 months	100%	100%	100%	100%	100%	100%	100%	100%
Adoption								
Age (days)								
50% Cases Resolved by Day	50	47	37	73	56	39	50	28
90% Cases Resolved by Day	319	263	222	617	237	225	804	156
Comparison with Court Standard of								
90% in 8 months	85%	88%	95%	76%	90%	90%	78%	95%
98% in 10 months	89%	93%	95%	83%	92%	92%	81%	95%
100% in 14 months	92%	94%	96%	83%	94%	93%	83%	97%
Parentage								
Age (days)								
50% Cases Resolved by Day	208	222	139	226	195	245	208	235
90% Cases Resolved by Day	489	495	461	515	539	476	489	408
Comparison with Court Standard of								
90% in 8 months	59%	54%	63%	51%	62%	49%	57%	51%
98% in 10 months	75%	65%	73%	72%	69%	72%	69%	76%
100% in 14 months	89%	88%	87%	85%	86%	83%	86%	92%

Table 3 (cont.) Age of Resolved Cases
King County Superior Court

Reporting Category	Age of Cases at Resolution							
	Q2/23	Q3/23	Q4/23	Q1/24	Q2/24	Q3/24	Q4/24	Q1/25
ITA (civil commitment) *								
Age (days)								
50% Cases Resolved by Day	10	10	10	13	11	13	14	10
90% Cases Resolved by Day	40	45	45	64	39	46	86	45
Juvenile Dependency (DEP)								
Age (days)								
50% Cases Resolved by Day	172	209	200	132	182	160	183	182
90% Cases Resolved by Day	556	459	489	433	530	432	371	338
Comparison with Court Standard of								
90% in 8 months	60%	58%	54%	74%	68%	73%	56%	73%
98% in 10 months	73%	72%	67%	74%	73%	77%	75%	83%
100% in 14 months	85%	86%	79%	89%	81%	89%	92%	91%
Juvenile Termination (TER)								
Age (days)								
50% Cases Resolved by Day	238	258	206	258	291	159	232	157
90% Cases Resolved by Day	853	504	808	869	717	544	894	283
Comparison with Court Standard of								
90% in 8 months	52%	43%	61%	48%	41%	68%	52%	88%
98% in 10 months	62%	64%	73%	52%	52%	73%	55%	94%
100% in 14 months	79%	76%	80%	67%	76%	82%	55%	94%
ARY/CHINS/OTHER								
Age (days)								
50% Cases Resolved by Day	32	35	34	35	32	32	35	35
90% Cases Resolved by Day	123	188	96	243	69	67	92	127
Comparison with Court Standard of								
90% in 8 months	98%	94%	95%	90%	98%	97%	96%	100%
98% in 10 months	98%	97%	97%	96%	100%	97%	97%	100%
100% in 14 months	100%	97%	100%	100%	100%	97%	98%	100%
Juvenile Truancy*								
Age (days)								
50% Cases Resolved by Day	378	414	286	356	399	604	286	380
90% Cases Resolved by Day	431	518	517	462	519	929	552	726
Juvenile Offense								
Age (days)								
50% Cases Resolved by Day	116	154	132	126	106	140	145	121
90% Cases Resolved by Day	369	385	358	397	331	306	370	329
Comparison with Court Standard of								
90% in 4 months	51%	39%	49%	48%	56%	40%	44%	50%
98% in 6 months	68%	60%	63%	70%	75%	66%	63%	71%
100% in 9 months	78%	79%	84%	83%	85%	85%	81%	86%
Criminal RALJ								
Age (days)								
50% Cases Resolved by Day	253	202	366	256	175	204	189	265
90% Cases Resolved by Day	431	427	504	531	578	471	550	414
Civil RALJ								
Age (days)								
50% Cases Resolved by Day	173	165	166	180	164	165	165	171
90% Cases Resolved by Day	245	318	243	728	226	325	309	204

* No standard yet.

Table 4. Active Pending Caseload Statistics
King County Superior Court

Reporting Category	Q2/23	Q3/23	Q4/23	Q1/24	Q2/24	Q3/24	Q4/24	Q1/25
Total (incl. RALJ)								
Previous Pending	20774	21357	21942	21865	23044	24122	24439	24403
New Filing	12338	12246	12368	13811	14179	13727	13511	15255
Resolved	11564	11615	11720	12808	12909	13202	13685	14465
End Pending	21357	21942	21865	23044	24122	24439	24403	25595
Resolution Rate*	0.937	0.948	0.948	0.927	0.910	0.962	1.013	0.948
Criminal (excl. RALJ)								
Previous Pending	4635	4286	4222	3919	3918	4069	4010	4034
New Filing	1302	1248	994	1285	1314	1308	1262	1223
Resolved	1309	1338	1205	1291	1296	1355	1351	1421
End Pending	4286	4222	3919	3918	4069	4010	4034	4143
Resolution Rate*	1.005	1.072	1.212	1.005	0.986	1.036	1.071	1.162
Civil (excl. RALJ)								
Previous Pending	6762	7124	7615	8034	8394	9125	9429	9332
New Filing	4579	5261	5697	5773	6340	6333	6408	7454
Resolved	4383	4747	4917	5517	5427	5871	6494	7047
End Pending	7124	7615	8034	8394	9125	9429	9332	9714
Resolution Rate*	0.957	0.902	0.863	0.956	0.856	0.927	1.013	0.945
Domestic								
Previous Pending	4417	4448	4624	4404	4564	4664	4782	4649
New Filing	1582	1646	1452	1622	1713	1730	1473	1660
Resolved	1564	1488	1534	1513	1571	1592	1620	1566
End Pending	4448	4624	4404	4564	4664	4782	4649	4810
Resolution Rate*	0.989	0.904	1.056	0.933	0.917	0.920	1.100	0.943
Probate								
Previous Pending	1420	1485	1506	1572	1711	1699	1799	1863
New Filing	1941	1697	1825	2160	1928	1849	1733	1999
Resolved	1852	1656	1749	2002	1897	1751	1657	1895
End Pending	1485	1506	1572	1711	1699	1799	1863	1965
Resolution Rate*	0.954	0.976	0.958	0.927	0.984	0.947	0.956	0.948
Guardianship								
Previous Pending	522	532	563	541	573	537	575	614
New Filing	256	263	225	284	233	250	261	261
Resolved	248	221	233	238	252	207	224	228
End Pending	532	563	541	573	537	575	614	644
Resolution Rate*	0.969	0.840	1.036	0.838	1.082	0.828	0.858	0.874
Adoption								
Previous Pending	266	263	248	237	238	229	223	211
New Filing	88	69	72	79	60	69	66	99
Resolved	89	84	73	63	71	71	82	74
End Pending	263	248	237	238	229	223	211	239
Resolution Rate*	1.011	1.217	1.014	0.797	1.183	1.029	1.242	0.747
Parentage								
Previous Pending	214	228	224	253	255	262	252	241
New Filing	84	77	98	80	112	93	69	67
Resolved	71	81	64	74	97	97	77	71
End Pending	228	224	253	255	262	252	241	234
Resolution Rate*	0.845	1.052	0.653	0.925	0.866	1.043	1.116	1.060
ITA (civil commitment)								
Previous Pending	274	309	356	333	362	414	505	452
New Filing	1423	1328	1341	1391	1356	1368	1323	1332
Resolved	1386	1271	1273	1437	1304	1311	1424	1295
End Pending	309	356	333	362	414	505	452	527
Resolution Rate*	0.974	0.957	0.949	1.033	0.962	0.958	1.076	0.972

* A value of "Resolution Rate" less than one indicates the resolution pace is slower than the filing pace.

Table 4 (cont.) Active Pending Caseload Statistics
King County Superior Court

Reporting Category	Q2/23	Q3/23	Q4/23	Q1/24	Q2/24	Q3/24	Q4/24	Q1/25
Juvenile Dependency (DEP)								
Previous Pending	247	240	207	217	242	246	296	333
New Filing	81	53	80	82	103	136	109	126
Resolved	92	86	70	53	59	82	61	109
End Pending	240	207	217	242	246	296	333	339
Resolution Rate*	1.136	1.623	0.875	0.646	0.573	0.603	0.560	0.865
Juvenile Termination (TER)								
Previous Pending	205	180	175	137	113	106	92	97
New Filing	50	50	23	26	36	30	35	26
Resolved	71	53	51	42	46	44	31	16
End Pending	180	175	137	113	106	92	97	104
Resolution Rate*	1.420	1.060	2.217	1.615	1.278	1.467	0.886	0.615
ARY/CHINS/OTHERS								
Previous Pending	121	129	121	143	129	143	157	219
New Filing	114	108	122	126	161	174	238	231
Resolved	103	110	103	129	148	150	176	216
End Pending	129	121	143	129	143	157	219	238
Resolution Rate*	0.904	1.019	0.844	1.024	0.919	0.862	0.739	0.935
Juvenile Truancy								
Previous Pending	1275	1739	1689	1677	2092	2081	1829	1865
New Filing	633	244	224	638	543	133	257	510
Resolved	168	294	236	224	552	370	244	306
End Pending	1739	1689	1677	2092	2081	1829	1865	2063
Resolution Rate*	0.265	1.205	1.054	0.351	1.017	2.782	0.949	0.600
Juvenile Offense								
Previous Pending	334	309	299	233	233	233	233	233
New Filing	181	168	180	180	235	223	249	233
Resolved	208	161	184	178	158	253	213	187
End Pending	309	299	302	369	448	408	417	496
Resolution Rate*	1.149	0.958	1.022	0.989	0.672	1.135	0.855	0.803
Criminal RALJ								
Previous Pending	46	47	49	55	47	62	47	48
New Filing	12	12	20	16	27	13	16	25
Resolved	11	8	16	23	12	29	14	16
End Pending	47	49	55	47	62	47	48	58
Resolution Rate*	0.917	0.667	0.800	1.438	0.444	2.231	0.875	0.640
Civil RALJ								
Previous Pending	36	38	44	41	37	37	35	28
New Filing	12	22	15	16	18	18	12	9
Resolved	9	17	12	24	19	19	17	18
End Pending	38	44	41	37	37	35	28	21
Resolution Rate*	0.750	0.773	0.800	1.500	1.056	1.056	1.417	2.000

* A value of "Resolution Rate" less than one indicates the resolution pace is slower than the filing pace.

Table 4-A. Active Reopened Cases and Modification Cases

Reporting Category	Q2/23	Q3/23	Q4/23	Q1/24	Q2/24	Q3/24	Q4/24	Q1/25
Re-opened without disposition	851	865	905	903	922	931	939	968
Modification without disposition	552	522	503	506	398	379	362	372

Chart 4-A. Pending Caseload at Quarter End:
Total Judicial Cases Only ("Matters Filed with Clerk" excluded)

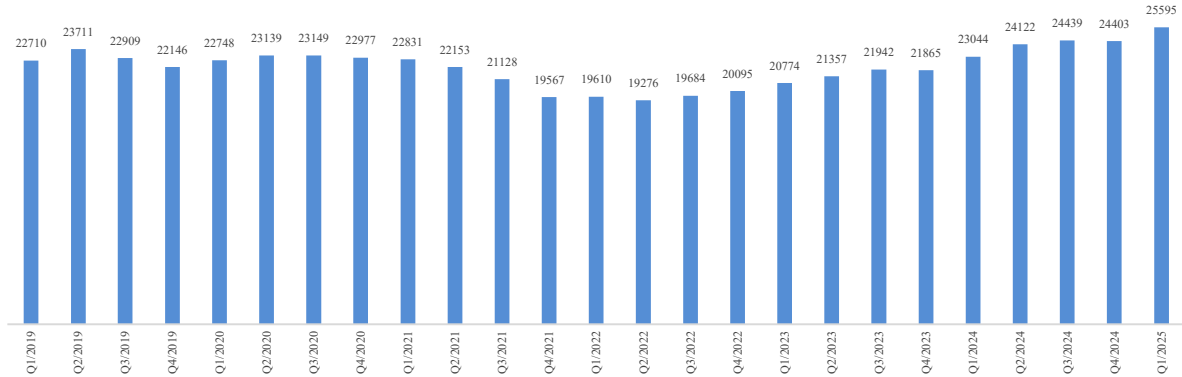


Chart 4-B. Pending Caseload at Quarter End: Criminal, Domestic, and Civil Cases

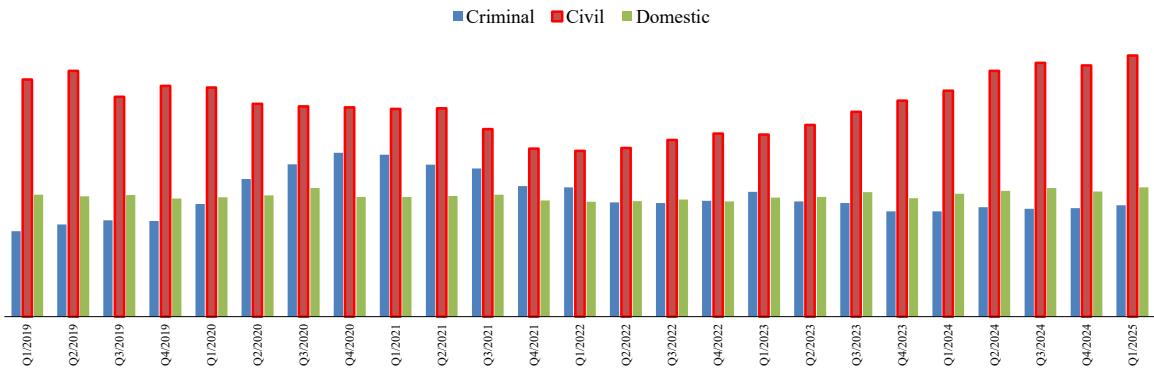
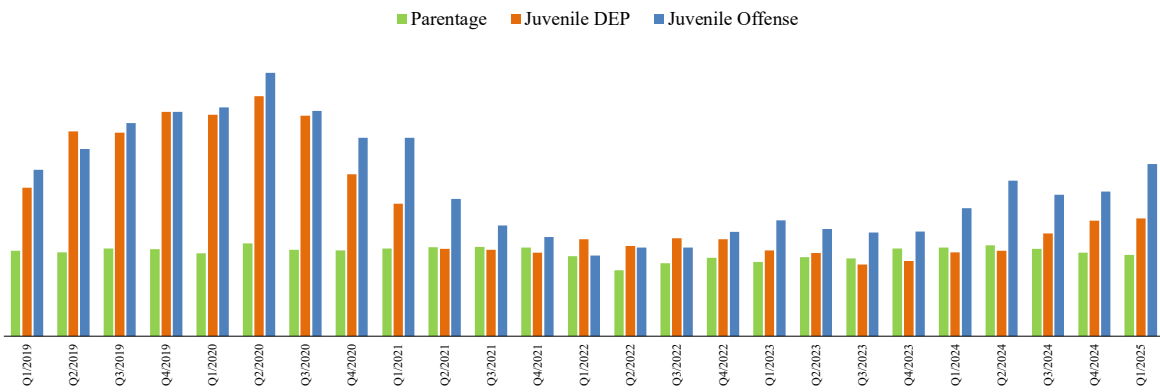


Chart 4-C. Pending Caseload at Quarter End:
Juvenile Offense, Paternity, and Dependency Cases



Note: "Civil" is specifically defined in this report. The category of "Civil" does **not** include the following case types: domestic, probate, guardianship, adoption, Parentage, ITA (civil commitment), juvenile cases (dependency, at-risk youth, child-in-need of service), civil RALJ, and tax filings that don't require judicial resources ("matters filed with clerk").

Table 5. Age of Pending Cases
King County Superior Court

Reporting Category	Age of Pending Cases and # of Cases in Each Age Interval							
	Q2/23	Q3/23	Q4/23	Q1/24	Q2/24	Q3/24	Q4/24	Q1/25
Criminal (excl. RALJ): # of Cases	4286	4222	3919	3918	4069	4010	4034	4143
Age (days)								
Median (50 percentile)	213	216	236	227	200	203	211	199
90 percentile	778	745	742	727	696	691	692	711
# of Cases in Age Interval								
0 - 60 days (0 - 2 months)	768	762	562	744	746	759	693	884
61 - 120 days (3 - 4 months)	604	555	532	516	678	606	609	615
121 - 180 days (5 - 6 months)	551	511	509	401	486	490	522	452
181 - 270 days (7 - 9 months)	529	634	561	569	507	605	603	555
> 270 days (> 9 months)	1834	1760	1755	1688	1652	1550	1607	1637
Civil (excl. RALJ): # of Cases	7124	7615	8034	8394	9125	9429	9332	9714
Age (days)								
Median (50 percentile)	150	144	137	137	129	138	140	119
90 percentile	544	545	550	509	405	390	411	391
# of Cases in Age Interval								
0 - 120 days (0 - 4 months)	3054	3388	3657	3843	4372	4326	4269	4920
121 - 240 days (5 - 8 months)	1550	1659	1830	2135	2385	2628	2425	2186
241 - 360 days (9 - 12 months)	1084	968	1027	1016	1211	1332	1424	1433
361 - 540 days (13 - 18 months)	711	821	691	640	670	702	773	763
541 - 720 days (19 - 24 months)	253	289	340	330	276	244	254	232
> 720 days (> 24 months)	472	490	489	430	211	197	187	180
Domestic: # of Cases	4448	4624	4404	4564	4664	4782	4649	4810
Age (days)								
Median (50 percentile)	144	151	157	159	145	148	163	162
90 percentile	544	548	570	556	537	515	519	519
# of Cases in Age Interval								
0 - 120 days (0 - 4 months)	1936	1971	1776	1877	2064	2055	1854	2010
121 - 240 days (5 - 8 months)	1013	1170	1140	1142	1034	1225	1174	1133
241 - 360 days (9 - 12 months)	670	594	669	688	713	640	800	792
361 - 540 days (13 - 18 months)	380	422	330	385	391	417	387	427
> 540 days (> 18 months)	449	467	489	472	462	445	434	448
Probate: # of Cases	1485	1506	1572	1711	1699	1799	1863	1965
Age (days)								
Median (50 percentile)	486	543	579	558	636	649	695	698
90 percentile	2199	2260	2314	2350	2442	2491	2554	2589
# of Cases in Age Interval								
0 - 120 days (0 - 4 months)	373	320	312	371	351	366	356	397
121 - 240 days (5 - 8 months)	149	183	162	166	149	155	156	171
241 - 360 days (9 - 12 months)	116	115	148	132	122	125	126	116
361 - 540 days (13 - 18 months)	145	132	136	169	164	168	167	165
> 540 days (> 18 months)	702	756	814	873	913	985	1058	1116
Guardianship: # of Cases	532	563	541	573	537	575	614	644
Age (days)								
Median (50 percentile)	262	269	368	369	452	390	353	358
90 percentile	1264	1354	1447	1522	1629	1705	1784	1873
# of Cases in Age Interval								
0 - 120 days (0 - 4 months)	203	203	177	210	181	204	209	223
121 - 240 days (5 - 8 months)	54	63	43	47	43	47	67	62
241 - 360 days (9 - 12 months)	49	40	48	28	29	22	33	38
361 - 540 days (13 - 18 months)	37	49	53	40	34	38	31	29
> 540 days (> 18 months)	189	208	220	248	250	264	274	292

Table 5 (cont.). Age of Pending Cases
King County Superior Court

Reporting Category	Age of Pending Cases and # of Cases in Each Age Interval								
	Q2/23	Q3/23	Q4/23	Q1/24	Q2/24	Q3/24	Q4/24	Q1/25	
Adoption: # of Cases	263	248	237	238	229	223	211	239	
Age (days)									
Median (50 percentile)	534	714	921	696	829	956	1105	978	
90 percentile	2119	2228	2320	2366	2475	2567	2659	2731	
# of Cases in Age Interval									
0 - 120 days (0 - 4 months)	57	39	32	52	41	39	37	63	
121 - 240 days (5 - 8 months)	21	25	18	20	16	18	13	10	
241 - 360 days (9 - 12 months)	29	13	12	9	11	8	11	9	
361 - 540 days (13 - 18 months)	25	33	24	21	16	14	11	14	
> 540 days (> 18 months)	131	138	151	136	145	144	139	143	
Parentage: # of Cases	228	224	253	255	262	252	241	234	
Age (days)									
Median (50 percentile)	158	147	157	157	157	138	173	190	
90 percentile	473	443	453	447	425	419	432	473	
# of Cases in Age Interval									
0 - 120 days (0 - 4 months)	99	94	108	93	115	106	75	77	
121 - 240 days (5 - 8 months)	63	58	64	77	62	77	97	77	
241 - 360 days (9 - 12 months)	33	34	39	46	44	31	31	38	
361 - 540 days (13 - 18 months)	17	23	29	25	26	27	25	24	
> 540 days (> 18 months)	16	15	13	14	15	11	13	18	
ITA (civil commitment): # of Cases	309	356	333	362	414	505	452	527	
Age (days)									
Median (50 percentile)	26	38	49	41	44	67	42	42	
90 percentile	414	418	580	598	664	666	790	833	
# of Cases in Age Interval									
0 - 120 days (0 - 4 months)	213	213	227	244	270	316	316	316	
121 - 240 days (5 - 8 months)	22	22	40	29	45	65	65	65	
> 240 days (> 8 months)	39	39	66	89	99	124	124	124	
Juv Dependency (DEP): # of Cases	240	207	217	242	246	296	333	339	
Age (days)									
Median (50 percentile)	155	202	199	180	132	123	132	147	
90 percentile	411	480	544	586	601	609	616	585	
# of Cases in Age Interval									
0 - 60 days (0 - 2 months)	47	38	42	56	57	94	66	86	
61 - 120 days (3 - 4 months)	53	22	41	24	55	54	88	63	
121 - 180 days (5 - 6 months)	33	31	21	45	39	36	50	49	
181 - 270 days (7 - 9 months)	41	44	26	22	20	41	47	52	
> 270 days (> 9 months)	66	72	87	95	75	71	82	89	
Juv Termination (TER): # of Cases	180	175	137	113	106	92	97	104	
Age (days)									
Median (50 percentile)	220	205	271	269	212	202	156	168	
90 percentile	1013	891	985	1076	1130	1259	1351	1404	
# of Cases in Age Interval									
0 - 60 days (0 - 2 months)	24	28	13	12	18	18	18	19	
61 - 120 days (3 - 4 months)	35	25	14	16	22	19	24	18	
121 - 180 days (5 - 6 months)	15	24	26	5	11	7	14	18	
181 - 270 days (7 - 9 months)	28	22	15	24	3	7	7	11	
> 270 days (> 9 months)	78	76	69	56	52	41	34	38	

Table 5 (cont.). Age of Pending Cases
King County Superior Court

Reporting Category	Age of Pending Cases and # of Cases in Each Age Interval							
	Q2/23	Q3/23	Q4/23	Q1/24	Q2/24	Q3/24	Q4/24	Q1/25
ARY/CHINS/OTHER: # of Cases	129	121	143	129	143	157	219	238
Age (days)								
Median (50 percentile)	129	159	168	122	140	111	75	90
90 percentile	2012	2104	2124	2287	2293	2384	2365	2415
# of Cases in Age Interval								
0 - 60 days (0 - 2 months)	49	33	45	49	56	66	103	105
61 - 120 days (3 - 4 months)	12	18	18	14	14	18	27	23
121 - 180 days (5 - 6 months)	13	12	13	6	5	6	18	27
181 - 270 days (7 - 9 months)	8	12	14	9	11	7	13	15
> 270 days (> 9 months)	47	46	53	51	57	60	58	68
Juvenile Truancy: # of Cases	1739	1689	1677	2092	2081	1829	1865	2063
Age (days)								
Median (50 percentile)	130	185	245	257	171	228	294	312
90 percentile	459	520	600	662	671	522	594	622
# of Cases in Age Interval								
0 - 60 days (0 - 2 months)	432	5	173	427	377	4	195	353
61 - 120 days (3 - 4 months)	379	434	45	288	342	330	60	278
121 - 180 days (5 - 6 months)	257	387	239	110	360	300	95	103
181 - 270 days (7 - 9 months)	195	400	508	241	170	537	453	93
> 270 days (> 9 months)	476	463	712	1026	832	658	1062	1236
Juvenile Offense: # of Cases	309	299	302	369	448	408	417	496
Age (days)								
Median (50 percentile)	107	106	90	89	103	105	97	111
90 percentile	367	374	305	313	315	358	363	379
# of Cases in Age Interval								
0 - 60 days (0 - 2 months)	86	98	104	127	134	115	151	135
61 - 120 days (3 - 4 months)	86	64	82	98	117	111	78	141
121 - 180 days (5 - 6 months)	50	50	45	54	85	57	75	75
181 - 270 days (7 - 9 months)	36	42	34	40	53	52	42	63
> 270 days (> 9 months)	51	45	37	50	59	73	71	82
Criminal RALJ: # of Cases	47	49	55	47	62	47	48	58
Age (days)								
Median (50 percentile)	184	243	145	124	110	140	187	129
90 percentile	355	447	459	528	367	432	343	369
# of Cases in Age Interval								
0 - 60 days (0 - 2 months)	8	9	17	9	21	5	10	19
61 - 120 days (3 - 4 months)	6	6	7	12	11	13	9	9
121 - 180 days (5 - 6 months)	8	7	6	11	9	11	4	11
181 - 270 days (7 - 9 months)	13	5	8	4	10	9	14	4
> 270 days (> 9 months)	12	22	17	11	11	9	11	15
Civil RALJ: # of Cases	38	44	41	37	37	35	28	21
Age (days)								
Median (50 percentile)	122	90	110	108	97	81	107	116
90 percentile	562	580	672	243	334	238	216	306
# of Cases in Age Interval								
0 - 60 days (0 - 2 months)	6	16	14	13	9	10	5	6
61 - 120 days (3 - 4 months)	13	10	8	10	13	12	11	5
121 - 180 days (5 - 6 months)	5	4	7	7	8	7	7	4
181 - 270 days (7 - 9 months)	6	5	2	5	2	3	3	2
> 270 days (> 9 months)	8	9	10	2	5	3	2	4

Table 6. Seattle vs. Regional Justice Center (KNT): Filing, Resolution, Pending Caseload (%)
King County Superior Court

	Q1/24		Q2/24		Q3/24		Q4/24		Q1/25	
	SEA	KNT	SEA	KNT	SEA	KNT	SEA	KNT	SEA	KNT
Filings Total	63%	37%	64%	36%	64%	36%	65%	35%	64%	36%
Criminal (excl. RALJ)	55%	45%	57%	43%	58%	42%	59%	41%	61%	39%
Civil (excl. RALJ)	55%	45%	58%	42%	57%	43%	58%	42%	59%	41%
Domestic	63%	37%	63%	37%	62%	38%	61%	39%	60%	40%
Probate	69%	31%	69%	31%	70%	30%	72%	28%	70%	30%
Guardianship	52%	48%	58%	43%	47%	53%	62%	38%	55%	45%
Adoption	86%	14%	75%	25%	78%	22%	73%	27%	77%	23%
Parentage	54%	46%	50%	50%	45%	55%	52%	48%	39%	61%
ITA (civil commitment)	100%	--	100%	--	100%	--	100%	--	100%	--
Juv. Dependency (DEP)	79%	21%	83%	17%	73%	17%	61%	17%	58%	17%
Juv. Termination (TER)	81%	19%	47%	53%	70%	30%	74%	26%	85%	15%
ARY/CHINS/Other	48%	52%	52%	48%	47%	53%	51%	49%	46%	54%
Juvenile Truancy	30%	70%	32%	68%	3%	97%	41%	59%	38%	62%
Juvenile Offense	100%	--	100%	--	100%	--	100%	--	100%	--
Criminal RALJ	69%	31%	78%	22%	62%	38%	81%	19%	56%	44%
Civil RALJ	81%	19%	83%	17%	61%	39%	67%	33%	78%	22%
Resolution Total	66%	34%	64%	36%	65%	35%	65%	35%	64%	36%
Criminal (excl. RALJ)	62%	38%	59%	41%	60%	40%	64%	36%	62%	38%
Civil (excl. RALJ)	58%	42%	58%	42%	57%	42%	57%	42%	57%	42%
Domestic	63%	37%	64%	36%	64%	36%	64%	36%	63%	37%
Probate	70%	30%	68%	32%	70%	30%	73%	27%	71%	29%
Guardianship	58%	43%	53%	47%	56%	44%	51%	49%	60%	40%
Adoption	78%	22%	83%	17%	82%	18%	66%	34%	73%	27%
Parentage	49%	51%	52%	48%	44%	48%	39%	48%	44%	48%
ITA (civil commitment)	100%	--	100%	--	100%	--	100%	--	100%	--
Juv. Dependency (DEP)	70%	30%	83%	17%	70%	30%	80%	20%	70%	30%
Juv. Termination (TER)	83%	17%	74%	26%	61%	39%	68%	32%	63%	37%
ARY/CHINS/Other	43%	57%	59%	41%	47%	53%	51%	49%	47%	53%
Juvenile Truancy	35%	65%	32%	68%	33%	67%	37%	63%	53%	47%
Juvenile Offense	100%	--	100%	--	100%	--	100%	--	100%	--
Criminal RALJ	65%	35%	58%	42%	90%	10%	50%	50%	56%	44%
Civil RALJ	88%	12%	84%	16%	95%	5%	77%	23%	67%	33%
Pending Total	61%	39%	61%	39%	61%	39%	60%	40%	61%	39%
Criminal (excl. RALJ)	61%	39%	60%	40%	59%	41%	57%	43%	57%	43%
Civil (excl. RALJ)	63%	37%	63%	37%	63%	37%	63%	37%	65%	35%
Domestic	61%	39%	60%	40%	59%	41%	59%	41%	58%	42%
Probate	69%	31%	70%	30%	70%	30%	70%	30%	70%	30%
Guardianship	55%	45%	56%	44%	52%	48%	56%	44%	54%	46%
Adoption	69%	31%	66%	34%	66%	34%	67%	33%	70%	30%
Parentage	38%	62%	37%	63%	39%	61%	41%	59%	39%	61%
ITA (civil commitment)	100%	--	100%	--	100%	--	100%	--	100%	--
Juv. Dependency (DEP)	70%	30%	70%	30%	71%	29%	66%	34%	61%	39%
Juv. Termination (TER)	79%	21%	68%	32%	71%	29%	74%	26%	76%	24%
ARY/CHINS/Other	70%	30%	60%	40%	60%	40%	57%	43%	54%	46%
Juvenile Truancy	35%	65%	35%	65%	33%	67%	33%	67%	32%	68%
Juvenile Offense	100%	--	100%	--	100%	--	100%	--	100%	--
Criminal RALJ	75%	25%	79%	21%	68%	32%	77%	23%	74%	26%
Civil RALJ	87%	13%	87%	13%	69%	31%	68%	32%	71%	29%

Excluding Cases filed with the Clerk

Table 7. Quarterly Utilization of Pro Tem Judges/Commissioners ⁽¹⁾

Category	Q4/22	Q1/23	Q2/23	Q3/23	Q4/23	Q1/24	Q2/24	Q3/24	Q4/24	Q1/25
Grand Total	1135	1543	1688	1226	1855	1894	2494	1502	1989	1514
FTE Equivalent ⁽²⁾	2.5	3.4	3.8	2.7	4.1	4.2	5.5	3.3	4.4	3.4
By Work Type										
Pro Tem Judge	156	93	114	158	263	26	209	125	123	8
Pro Tem Commissioner	979	1450	1574	1068	1592	1868	2286	1377	1866	1506
By Location										
KCCH	446	830	588	453	797	897	960	734	444	465
MRJC	285	480	572	328	632	698	978	427	1054	475
Juvenile	224	134	295	327	299	188	321	301	288	407
ITA	180	98	216	118	127	111	235	40	202	158
Other or Unspecified	0	0	18	0	0	0	0	0	0	9
By Calendar Type										
Criminal	51	16	61	30	95	13	77	78	40	8
Civil	0	3	0	3	103	0	31	2	0	0
Ex Parte	253	340	470	308	514	438	347	263	444	203
Family Law/Domestic	427	944	629	440	717	1145	1483	819	1015	715
Dependency	119	68	259	202	234	175	220	256	205	407
Juvenile Offense	102	55	22	115	65	0	25	22	28	0
BECCA	3	12	15	10	0	13	77	24	55	0
ITA	180	98	216	118	127	111	235	40	202	158
Juvenile Drug Court	0	0	0	0	0	0	0	0	0	0
Family Treatment Court	0	0	0	0	0	0	0	0	0	0
Plea Calendar	0	0	0	0	0	0	0	0	0	0
Status/Non-Compliance	0	0	0	0	0	0	0	0	0	0
Other or Unspecified	0	8	18	0	0	0	0	0	0	24
By Reason										
Vacation Backfill	135	82	61	125	117	7	21	2	2	8
Medical Backfill	982	1461	1580	1078	1589	1881	2362	1401	1921	1482
Duty Time	18	0	22	24	145	6	111	99	66	0
Conference Coverage	0	0	8	0	6	0	0	0	0	0
Congestion	0	0	0	0	0	0	0	0	0	0
Vacancy Coverage	0	0	0	0	0	0	0	0	0	0
Other or Unspecified	0	0	18	0	0	0	0	0	0	24

(1) This table is based on the time sheet for compensation.

(2) Judge FTE Equivalent = # of hours / [7.5 hours/day * 20 days/month * 3 months] = # of hours/450.

Data for the most current quarter are incomplete at reporting time and will be updated in next quarterly report.

The Pro Tem hours are provided quarterly by the Administrative Services Department of King County Superior Court.

Table 8. Ex Parte and Family Law Hearings and Documents Signed

Ex Parte: Hearings Held and Documents Signed								
	2024Q2		2024Q3		2024Q4		2025Q1	
	Hearings	Documents Signed	Hearings	Documents Signed	Hearings	Documents Signed	Hearings	Documents Signed
KNT (EXP04/05)								
Civil	468	768	720	1228	1285	2342	951	2059
Domestic	50	369	42	443	73	508	49	531
Probate/Guardianship	475	502	413	495	414	373	313	284
Adoption/Paternity	14	38	13	34	31	68	18	51
Ex Parte Judge Panel (EXP08)		508		516		915		548
Ex Parte Via Clerk (EXP06)		3643		3486		3806		4847
KNT Subtotal	1007	5828	1188	6202	1803	8012	1331	8320
SEA (EXP01/02)								
Civil	607	1334	915	1858	1272	2377	1195	2627
Domestic	82	605	73	618	80	758	84	810
Probate/Guardianship	761	926	788	930	779	940	758	835
Adoption/Paternity	45	115	57	130	52	143	47	138
Ex Parte Judge Panel (EXP08)		1362		1220		2330		1429
Ex Parte Via Clerk (EXP07)		8057		6578		6854		7637
SEA Total	1495	12399	1833	11334	2183	13402	2084	13476
KNT/SEA Total	2502	18227	3021	17536	3986	21414	3415	21796
FAMILY LAW: Hearings Held and Documents Signed								
	2024Q2		2024Q3		2024Q4		2025Q1	
	Hearings	Documents Signed	Hearings	Documents Signed	Hearings	Documents Signed	Hearings	Documents Signed
KNT (FAM02)								
Civil	1343	771	1288	899	1374	999	1447	932
Domestic	287	689	294	815	235	602	262	734
Adoption/Paternity	102	284	88	239	88	219	82	271
KNT Subtotal	1732	1744	1670	1953	1697	1820	1791	1937
SEA (FAM01)								
Civil	1573	1409	1419	1224	1512	1405	1438	1176
Domestic	410	941	464	1017	463	950	407	825
Adoption/Paternity	42	211	34	179	47	179	49	154
SEA Total	2025	2561	1917	2420	2022	2534	1894	2155
KNT/SEA Total	3757	4305	3587	4373	3719	4354	3685	4092

Glossary and Definition

Active Status

A case is active if it is not on suspense status (see Suspense Status).

Completion

A case is completed if dispositive document is filed with the court following resolution.

Jury Trial

A hearing is reported as a jury trial if the jury is impaneled.

Non-Jury Trial

A hearing is reported as a non-jury trial if an opening statement is made, waived, or reserved.

Pending Case

A case is defined as pending if it is unresolved and active (not in suspense).

Post-disposition Modifications

Petition to modify parenting plan after the resolution of the original case, based on the modification schedule.

Resolution

A case is resolved if all issues in the complaint are fully adjudicated.

Suspended Case

A case is placed in suspense status from active status during the reporting period.

Suspense Status

A case is on suspense status if it is on warrant, appeal, stay, mediation, arbitration ("Deferred Prosecution" is not a suspense status, but is treated as a resolution).

Trial

A hearing set before a judge or jury in which all the issues in the case are meant to be resolved. A trial normally includes opening statements to the court or jury stating what evidence will show, introduction of witnesses and exhibits for direct and cross examination, final arguments to the court or jury in which counsel argue both the evidence and the law, and judgment by the court or jury stating what the facts of the case are and what law applies to the facts. In a jury case, it also includes the selection of the jury. A trial can be held for one or more cases. A single trial may be held to adjudicate more than one case (as defined above).