



King County

Department of Judicial Administration

Catherine Cornwall

Director and Superior Court Clerk

(206) 296-9300 (206) 296-0100 TTY/TDD

King County Superior Court

Quarterly Statistical Report

Second Quarter 2025

Department of Judicial Administration

Prepared by: Shiquan Liao, Ph.D., Statistician

July 15, 2025

Report #: QTR-2025-Q2

Seattle:

516 Third Avenue Room E609
Seattle, WA 98104-2386

Regional Justice Center:

401 Fourth Avenue North Room 2C
Kent, WA 98032-4429

Juvenile Division:

1211 East Alder Room 3015
Seattle, WA 98122-5598

Quarterly Report Summary

King County Superior Court

- **Criminal Cases.** The criminal filings in the first two quarters of 2025 were 2,676 cases, showing a 3% increase from 2024 (+3.0%). MRJC accounted for 39% of the criminal cases filed in 2025. The resolutions of criminal cases in the same period exceeded the filing pace, totaling 2,930 cases. At the end of June 2025, 3,995 criminal cases (excluding RALJ) remained active. Of the 3,995 pending criminal cases, 39% were the MRJC cases.
- **Civil Cases.** Filings in civil cases (case type 2) continued an upwards trend since the third quarter of 2023. The filings in case type 2 (general civil) in the first two quarters of 2025 were significantly higher than that in the same period in 2024, showing a 21% increase from 2024 and totaling 14,694 cases. The increase in civil filings was primarily due to the rise in unlawful detainer cases and civil protection petitions. MRJC accounted for 40% of the civil cases filed in 2025. The overall civil resolutions were lower than the filing volume in the same period, resulting an increase in active civil pending caseload. At the end of June 2025, there were 9,653 civil cases pending disposition, with MRJC having 35% of the pending civil caseload.
- **Domestic Cases.** Domestic case (case type 3) filings in the first two quarters of 2025 were the same as that in 2024, different by 2 cases only in the same period. A total of 3,333 domestic cases were filed in the first half of 2025, and 39% were filed in the MRJC. The resolutions of domestic cases fell slightly behind the filing volume in 2025. At the end of June 2025, the pending domestic caseload was 4,805 cases, with 41% being the MRJC cases. The pending domestic cases is showing an upwards trend in recent quarters.
- **ITA Cases.** The filings of ITA cases in 2025 remained at a high level, but seemed to have reached a plateau. In the past 5 years, the annual ITA filings were over 5,000 cases. A total of 2,756 ITA cases were filed in the first two quarters of 2025, increasing by only 9 cases from the same period of 2024. There were 605 ITA cases remaining to be adjudicated at the end of June 2025.
- **Juvenile Dependency/Termination (DEP/TER) and At-risk Youth (ARY)/Child-in-Need of Service (CHINS) Cases.** In the first two quarters of 2025, termination and truancy filings were lower than that in the same period of 2024. On the other hand, filings in dependency, ARY/CHINS/others were up 39%, and 59% respectively from 2024. At the end of June 2025, the numbers of cases pending disposition in the non-Offense juvenile categories were: 354 dependency cases, 93 termination cases, 217 ARY/CHINS/Other cases, and 2,412 truancy cases.
- **Juvenile Offense Cases.** The juvenile offense filings in the first two quarters of 2025 showed no noticeable change from the same period of 2024, with a total of 451 juvenile offense cases filed in 2025 so far. The court disposed 456 juvenile offense cases, matching the filing pace in the year. At the end of June 2025, there were 448 pending juvenile offense cases. The pending volume is increasing noticeably since the beginning of 2024 and has almost doubled from the low level seen in 2022.
- **Pro Tem Use.** In the first two quarters of 2025, the daily Pro Tem use by the court was 3.4 and 4.7 FTEs on average, respectively.
- **Post-resolution Modifications (Table 1-A).** In the first two quarters of 2025, there were 2,758 post-resolution modifications filed (both parenting plan and relocation modifications).
- **Active re-opened cases and family law modification cases (Table 4-A).** At the end of June 2025, 1,003 re-opened cases and 415 family law modification cases remained active.

Table 1. Year-to-Date Filing Activity
King County Superior Court

Reporting Category	Year-to-Date (Jan – Jun) and Annual Filing Activity ⁽¹⁾					2024-2025 change (+ means “increase”)		% of 2025 Total Filing ⁽²⁾
	2021	2022	2023	2024	2025	Cases	Percentage	
Total (incl. RALJ)								
Year-to-Date Filing	20508	22311	24566	27990	30624	+2634	+9.4%	
Annual Filing	40249	44424	49172	55336				
Criminal (excl. RALJ)								
Year-to-Date Filing	2246	2459	2655	2599	2676	+77	+3.0%	8.7%
Annual Filing	4658	4956	4896	5169				
Civil (excl. RALJ)								
Year-to-Date Filing	7019	7680	8825	12113	14694	+2581	+21.3%	48.0%
Annual Filing	13624	15749	19776	24855				
Domestic								
Year-to-Date Filing	3115	3051	3271	3335	3333	-2	-0.1%	10.9%
Annual Filing	6184	5999	6369	6533				
Probate								
Year-to-Date Filing	4003	3996	4041	4008	3946	-142	-3.5%	12.9%
Annual Filing	7478	7747	7565	7673				
Guardianship								
Year-to-Date Filing	388	472	535	517	553	+36	+7.0%	1.8%
Annual Filing	725	1057	958	1027				
Adoption								
Year-to-Date Filing	191	170	177	139	190	+51	+36.7%	0.6%
Annual Filing	347	363	318	274				
Parentage								
Year-to-Date Filing	205	159	158	192	168	-24	-12.5%	0.5%
Annual Filing	401	347	333	354				
ITA – Civil Commitment								
Year-to-Date Filing	2662	2813	2872	2747	2756	+9	+0.3%	9.0%
Annual Filing	5159	5665	5541	5438				
Juvenile Dependency (DEP)								
Year-to-Date Filing	206	218	186	185	257	+72	+38.9%	0.8%
Annual Filing	361	377	302	420				
Juvenile Termination (TER)								
Year-to-Date Filing	97	88	95	62	37	-25	-40.3%	0.1%
Annual Filing	205	188	168	128				
ARY/CHINS/OTHERS								
Year-to-Date Filing	113	124	232	287	456	+169	+58.9%	1.5%
Annual Filing	251	301	479	709				
Juvenile Truancy								
Year-to-Date Filing	4	807	1092	1181	1034	-147	-12.4%	3.4%
Annual Filing	61	1121	1560	1570				
Juvenile Offense								
Year-to-Date Filing	208	219	375	468	451	-17	-3.6%	1.5%
Annual Filing	356	500	723	941				
Criminal RALJ								
Year-to-Date Filing	18	20	26	43	43	0	0.0%	0.1%
Annual Filing	49	53	58	72				
Civil RALJ								
Year-to-Date Filing	33	35	26	34	30	-4	-11.8%	0.1%
Annual Filing	58	55	63	63				
Matters Filed with Clerk ⁽³⁾								
Year-to-Date Filing	1309	2246	2816	2324	3253	+929	+40.0%	
Annual Filing	2882	5169	5464	4745				

(1) New filings only (based on filing date). (2) New filings of each reporting category as percentage of “Year-to-Date Filing”.

(3) “Matters Filed with Clerk” not included in the “Total”.

Chart 1-A. Quarterly Filing Activity
Total Judicial Cases Only ("Matters Filed with Clerk" excluded)

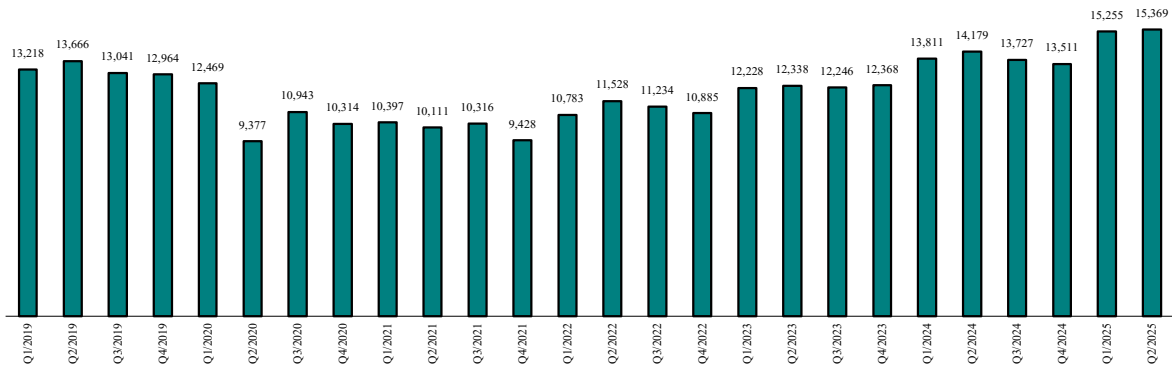


Chart 1-B. Quarterly Filings: Criminal and Juvenile Offense Cases

■ Criminal ■ Juvenile Offenses

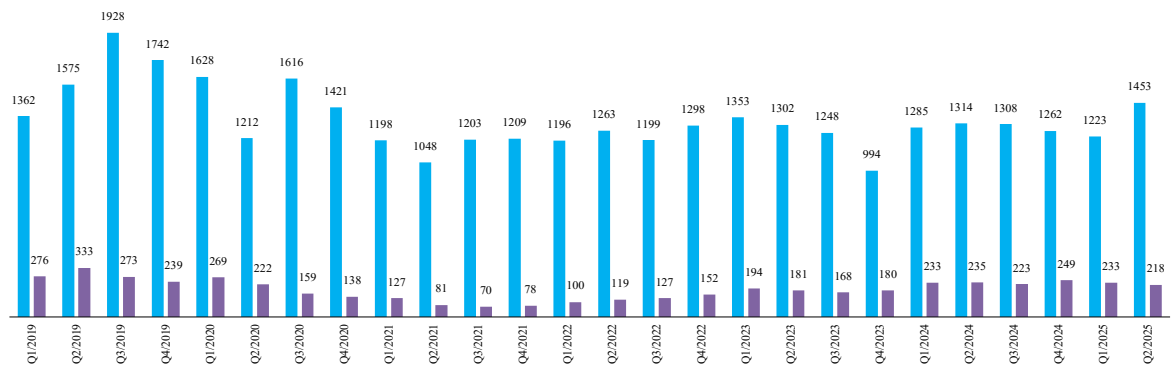
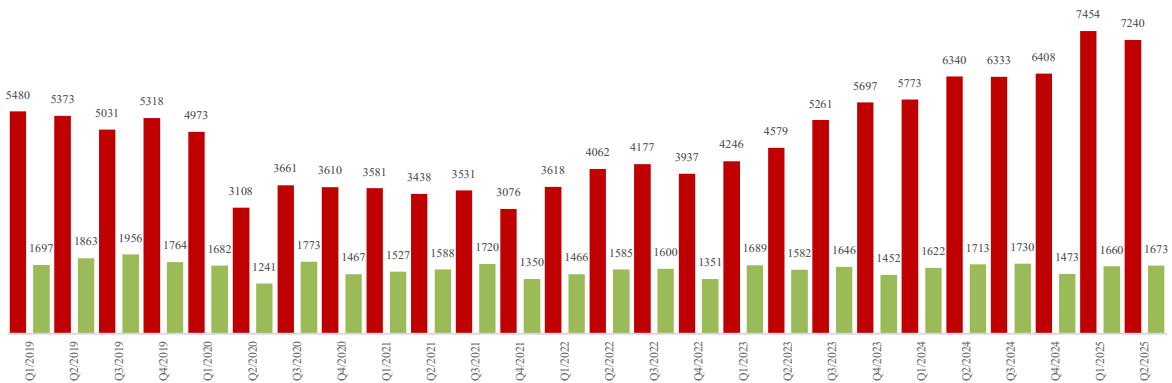


Chart 1-C. Quarterly Filings: Civil and Domestic Cases

■ Civil ■ Domestic



* Note: "Civil" is specifically defined in this report. The category of "Civil" does not include the following case types: domestic, probate, guardianship, adoption, Parentage, ITA (civil commitment), juvenile cases (dependency, at-risk youth, child-in-need of service), civil RAL, and tax filings that don't require judicial resources ("matters filed with clerk").

Table 1-A. Post-Resolution Modifications Filed (Domestic and Parentage Cases)

		2023Q1			2023Q2			2023Q3			2023Q4			Year 2023		
Location	Case Type	DMOD	DTBA	Total	DMOD	DTBA	Total	DMOD	DTBA	Total	DMOD	DTBA	Total	DMOD	DTBA	Total
KNT	Domestic	7	52	59	11	45	56	8	55	63	5	45	50	31	197	228
	Parentage		8	8	1	2	3	1	5	6		4	4	2	19	21
KNT Total		7	60	67	12	47	59	9	60	69	5	49	54	33	216	249
SEA	Domestic	7	58	65	24	47	71	18	46	64	10	42	52	59	193	252
	Parentage		4	4	1	4	5		6	6		3	3	1	17	18
SEA Total		7	62	69	25	51	76	18	52	70	10	45	55	60	210	270
KNT/SEA Total		14	122	136	37	98	135	27	112	139	15	94	109	93	426	519
		2024Q1			2024Q2			2024Q3			2024Q4			Year 2024 (YTD)		
Location	Case Type	Reloc-ation	Parent Mod	Total	Reloc-ation	Parent Mod	Total	Reloc-ation	Parent Mod	Total	Reloc-ation	Parent Mod	Total	Reloc-ation	Parent Mod	Total
KNT	Domestic	8	31	39	12	40	52	11	47	58	5	34	39	36	152	188
	Parentage	1		1		3	3	0	2	2	2	3	5	3	8	11
KNT Total		9	31	40	12	43	55	11	49	60	7	37	44	39	160	199
SEA	Domestic	14	51	65	19	59	78	10	44	54	14	40	54	57	194	251
	Parentage	0	6	6	2	1	3	1	5	6	0	2	2	3	14	17
SEA Total		14	57	71	21	60	81	11	49	60	14	42	56	60	208	268
KNT/SEA Total		23	88	111	33	103	136	22	98	120	21	79	100	99	368	467
		2025Q1			2025Q2			2025Q3			2025Q4			Year 2025 (YTD)		
Location	Case Type	Reloc-ation	Parent Mod	Total	Reloc-ation	Parent Mod	Total	Reloc-ation	Parent Mod	Total	Reloc-ation	Parent Mod	Total	Reloc-ation	Parent Mod	Total
KNT	Domestic	5	35	40	9	53	62							14	88	102
	Parentage	1	3	4	2	2	4							3	5	8
KNT Total		6	38	44	11	55	66							17	93	110
SEA	Domestic	12	58	70	18	63	81							30	121	151
	Parentage	1	3	4		4	4							1	7	8
SEA Total		13	61	74	18	67	85							31	128	159
KNT/SEA Total		19	99	118	29	122	151							48	221	269

Table 2. Number of Cases Resolved and Resolution Category (%)
King County Superior Court

Reporting Category	Q3/23	Q4/23	Q1/24	Q2/24	Q3/24	Q4/24	Q1/25	Q2/25
Total Resolutions (excl. "Matters Filed with Clerk")	11615	11720	12808	12909	13202	13511	14465	14728
Criminal (excl. RALJ): # Resolved	1338	1205	1291	1296	1355	1351	1421	1509
Resolved by Jury Trial	1.4%	2.3%	2.2%	1.5%	2.3%	2.0%	2.3%	1.7%
Resolved by Non-Jury Trial	0.9%	0.2%	0.1%	0.7%	0.1%	0.1%	0.2%	0.2%
Resolved by Guilty Plea	67.6%	66.0%	64.4%	68.4%	72.0%	72.0%	66.7%	70.7%
Dismissal	30.0%	30.8%	32.9%	29.2%	23.5%	24.7%	28.3%	27.3%
Others	0.1%	0.7%	0.3%	0.3%	2.1%	1.1%	2.5%	0.1%
Civil: # Resolved	4747	4917	5517	5427	5871	6494	7047	7045
Resolved by Jury Trial	0.3%	0.3%	0.3%	0.2%	0.1%	0.2%	0.2%	0.1%
Resolved by Non-Jury Trial	0.2%	0.3%	0.2%	0.3%	0.2%	0.3%	0.3%	0.4%
Summary Judgment	0.7%	1.1%	1.0%	1.0%	1.3%	1.0%	0.9%	1.1%
Default/ Uncontested	52.8%	51.5%	49.2%	50.7%	49.4%	43.4%	43.9%	45.6%
Arbitration	1.4%	2.3%	1.4%	1.5%	1.3%	1.3%	1.0%	0.6%
Settlement/Dismissal	41.3%	41.0%	40.5%	38.9%	42.7%	48.0%	48.0%	49.2%
Closure by Clerk	2.7%	2.6%	6.6%	6.8%	4.2%	5.3%	5.2%	2.1%
Others	0.7%	0.8%	0.8%	0.6%	0.7%	0.5%	0.6%	0.8%
Domestic: # Resolved	1488	1534	1513	1571	1592	1620	1566	1661
Resolved by Trial	4.2%	5.6%	4.0%	5.9%	5.1%	4.4%	4.3%	4.3%
Default/ Uncontested	10.2%	8.0%	8.7%	6.5%	9.3%	6.7%	8.7%	7.7%
Settlement /Dismissal	84.2%	85.6%	86.3%	86.6%	83.9%	85.9%	84.7%	86.8%
Closure by Clerk	1.1%	0.5%	0.8%	0.8%	1.4%	2.8%	1.8%	0.7%
Others	0.3%	0.3%	0.3%	0.2%	0.3%	0.2%	0.5%	0.5%
Probate: # Resolved	1656	1749	2002	2002	1751	1657	1895	1873
Personal Rep. Appointed	67.3%	69.1%	68.7%	69.1%	69.5%	67.6%	67.0%	67.4%
Dismissal	4.9%	6.1%	4.1%	3.2%	4.6%	5.3%	5.1%	2.2%
Closure by Clerk	0.4%	0.0%	0.0%	0.0%	0.1%	0.0%	0.1%	0.1%
Others	27.4%	24.8%	27.2%	27.8%	25.8%	27.2%	27.9%	30.2%
Guardianship: # Resolved	221	233	238	252	207	224	228	260
Guardian Appointed	57.0%	52.4%	63.4%	66.3%	66.2%	65.2%	69.3%	79.2%
Dismissal	25.3%	37.3%	27.7%	16.3%	18.4%	19.2%	17.5%	10.4%
Closure by Clerk	0.0%	0.0%	0.0%	0.0%	0.0%	0.0%	0.0%	0.0%
Others	17.6%	10.3%	8.8%	17.5%	15.5%	15.6%	13.2%	10.4%
Adoption: # Resolved	84	73	63	71	71	82	74	95
Resolved by Trial	0.0%	1.4%	0.0%	0.0%	0.0%	0.0%	0.0%	2.1%
Uncontested	0.0%	0.0%	0.0%	0.0%	0.0%	0.0%	0.0%	0.0%
Settlement /Dismissal	94.0%	98.6%	88.9%	98.6%	94.4%	86.6%	100.0%	94.7%
Closure by Clerk	6.0%	0.0%	11.1%	1.4%	5.6%	13.4%	0.0%	1.1%
Others	0.0%	0.0%	0.0%	0.0%	0.0%	0.0%	0.0%	2.1%
Parentage: # Resolved	81	64	74	97	97	77	71	88
Resolved by Trial	3.7%	12.5%	6.8%	7.2%	3.1%	1.3%	2.8%	9.1%
Summary Judgment	39.5%	20.3%	31.1%	34.0%	36.1%	35.1%	15.5%	29.5%
Default/ Uncontested	21.0%	18.8%	17.6%	15.5%	9.3%	15.6%	32.4%	14.8%
Settlement/Dismissal	34.6%	46.9%	43.2%	43.3%	45.4%	41.6%	47.9%	46.6%
Closure by Clerk	1.2%	0.0%	0.0%	0.0%	6.2%	6.5%	0.0%	0.0%
Others	0.0%	1.6%	1.4%	0.0%	0.0%	0.0%	1.4%	0.0%
ITA (civil commitment): # Resolved	1271	1273	1437	1304	1311	1424	1295	1369
Court Decision to Commit	24.7%	21.8%	20.2%	24.4%	23.6%	23.3%	27.1%	25.2%
Closed by Court	0.0%	0.1%	0.0%	0.0%	0.0%	0.1%	0.0%	0.1%
Dismissal	13.5%	12.6%	9.8%	8.4%	9.0%	10.3%	10.3%	12.9%
Uncontested	61.8%	65.6%	70.0%	67.2%	67.4%	66.3%	62.5%	61.9%
Juv. Dependency: # Resolved	86	70	53	59	82	61	109	105
Finding of Dependency	59.3%	64.3%	77.4%	69.5%	73.2%	72.1%	56.9%	65.7%
Dismissal	40.7%	35.7%	22.6%	30.5%	26.8%	27.9%	43.1%	34.3%
Others	0.0%	0.0%	0.0%	0.0%	0.0%	0.0%	0.0%	0.0%

Table 2 (cont.). Number of Cases Resolved and Resolution Category (%)
King County Superior Court

Reporting Category	Q3/23	Q4/23	Q1/24	Q2/24	Q3/24	Q4/24	Q1/25	Q2/25
Juv. Terminations: # Resolved	53	51	42	46	44	31	16	19
Finding of Dependency	88.7%	88.2%	85.7%	87.0%	75.0%	83.9%	93.8%	89.5%
Dismissal	11.3%	11.8%	14.3%	13.0%	22.7%	16.1%	6.3%	10.5%
Others	0.0%	0.0%	0.0%	0.0%	2.3%	0.0%	0.0%	0.0%
ARY/CHINS/OTHER: # Resolved	110	103	129	148	150	176	216	246
Approve of Petition	82.7%	82.5%	79.8%	91.2%	91.3%	89.2%	92.6%	85.4%
Dismissal	17.3%	17.5%	20.2%	8.8%	8.7%	10.8%	6.9%	14.6%
Others	0.0%	0.0%	0.0%	0.0%	0.0%	0.0%	0.5%	0.0%
Juvenile Truancy: # Resolved	294	236	224	552	370	244	306	170
Approve of Petition	5.4%	8.1%	13.8%	19.2%	3.5%	5.3%	16.3%	24.7%
Dismissal	94.6%	91.9%	86.2%	80.8%	93.2%	94.7%	81.7%	75.3%
Others	0.0%	0.0%	0.0%	0.0%	3.2%	0.0%	2.0%	0.0%
Juvenile Offense: # Resolved	161	184	178	158	253	213	187	269
Resolved by Trial (Fact Finding)	0.6%	0.0%	0.0%	0.6%	0.6%	0.9%	0.0%	0.0%
Resolved by Guilty Plea	34.8%	44.0%	31.5%	33.5%	37.9%	34.7%	39.6%	45.0%
Dismissal	41.0%	35.3%	51.1%	41.1%	45.1%	46.9%	42.2%	39.0%
Deferred Disposition (DDSP)	21.7%	15.8%	12.4%	17.1%	12.3%	11.7%	11.2%	10.8%
Others (including Deferred Prosecution)	1.9%	4.9%	5.1%	7.6%	4.7%	5.6%	7.0%	5.2%
Criminal RALJ: # Resolved	8	16	23	12	29	14	16	9
RALJ Decision	62.5%	87.5%	60.9%	75.0%	55.2%	64.3%	87.5%	55.6%
Dismissal	37.5%	12.5%	39.1%	25.0%	17.2%	35.7%	12.5%	44.4%
Others	0.0%	0.0%	0.0%	0.0%	27.6%	0.0%	0.0%	0.0%
Civil RALJ: # Resolved	17	12	24	19	19	17	18	10
RALJ Decision	35.3%	25.0%	25.0%	26.3%	21.1%	47.1%	22.2%	50.0%
Dismissal	64.7%	75.0%	75.0%	68.4%	73.7%	41.2%	77.8%	50.0%
Others	0.0%	0.0%	0.0%	5.3%	5.3%	11.8%	0.0%	0.0%

Chart 2-A. Quarterly Resolutions
Total Judicial Cases Only ("Matters Filed with Clerk" excluded)

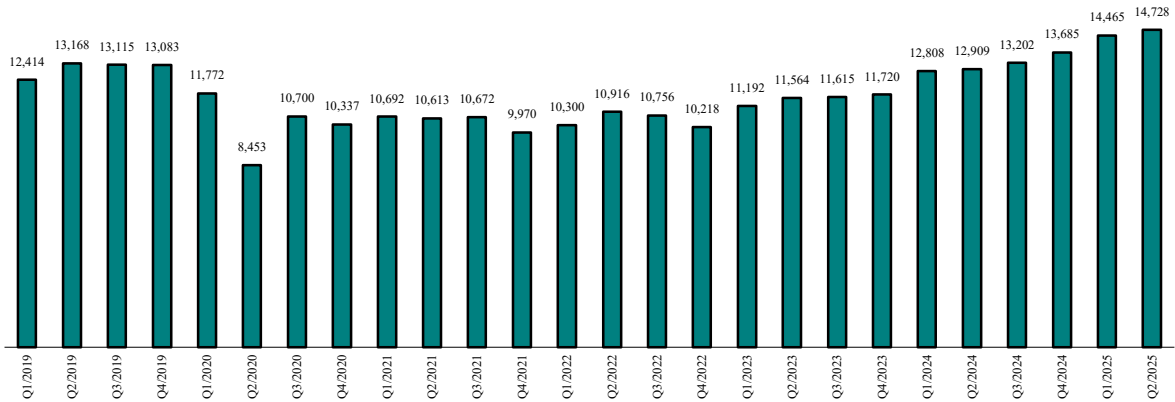


Chart 2-B. Quarterly Resolutions: Criminal and Juvenile Offense Cases

■ Criminal ■ Juvenile Offenses

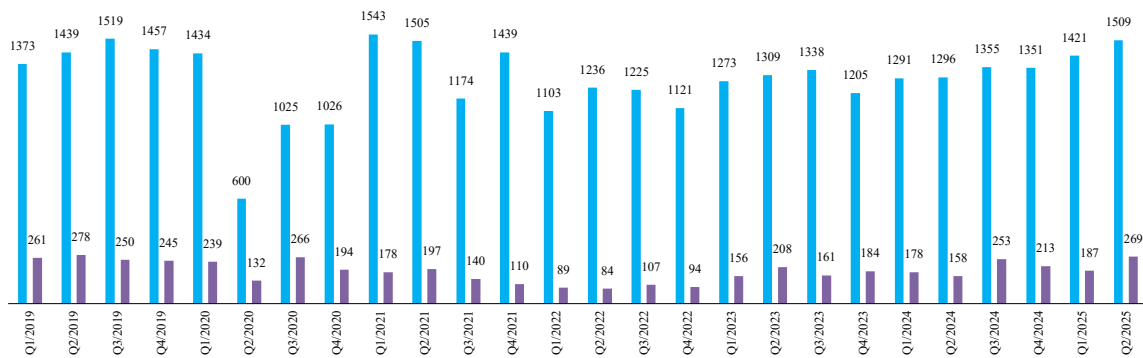
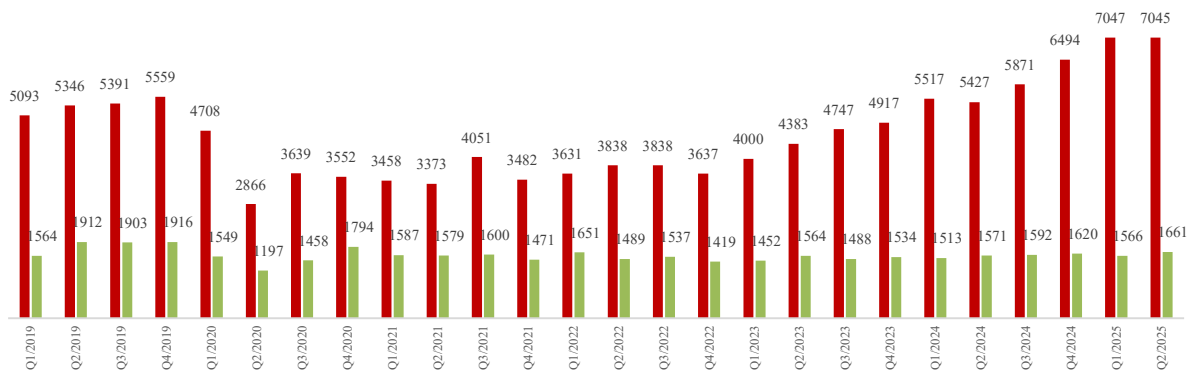


Chart 2-C. Quarterly Resolutions: Civil and Domestic Cases

■ Civil ■ Domestic



Note: "Civil" is specifically defined in this report. The category of "Civil" does **not** include the following case types: domestic, probate, guardianship, adoption, Parentage, ITA (civil commitment), juvenile cases (dependency, at-risk youth, child-in-need of service), civil RAL, and tax filings that don't require judicial resources ("matters filed with clerk").

Table 3. Age of Resolved Cases
King County Superior Court

Reporting Category	Age of Cases at Resolution							
	Q3/23	Q4/23	Q1/24	Q2/24	Q3/24	Q4/24	Q1/25	Q2/25
Criminal (excl. RALJ)								
Age (days)								
50% Cases Resolved by Day	193	214	252	230	214	189	220	204
90% Cases Resolved by Day	809	842	774	773	709	686	753	670
Comparison with Court Standard of								
90% in 4 months	37%	36%	29%	34%	33%	37%	31%	35%
98% in 6 months	48%	46%	39%	42%	45%	49%	43%	47%
100% in 9 months	59%	59%	53%	56%	58%	62%	58%	62%
Civil (excl. RALJ)								
Age (days)								
50% Cases Resolved by Day	43	38	63	49	57	67	57	46
90% Cases Resolved by Day	346	345	399	430	353	360	357	330
Comparison with Court Standard of								
90% in 12 months	91%	91%	88%	87%	90%	90%	90%	92%
98% in 18 months	97%	97%	94%	92%	96%	96%	97%	98%
100% in 24 months	98%	98%	97%	94%	98%	98%	99%	99%
Domestic								
Age (days)								
50% Cases Resolved by Day	188	210	204	197	185	180	216	212
90% Cases Resolved by Day	448	488	493	467	512	482	492	456
Comparison with Court Standard of								
90% in 8 months	60%	56%	58%	57%	57%	59%	54%	57%
98% in 10 months	68%	67%	66%	68%	65%	69%	62%	66%
100% in 14 months	88%	85%	86%	86%	84%	85%	85%	88%
Probate								
Age (days)								
50% Cases Resolved by Day	3	3	2	3	3	3	4	4
90% Cases Resolved by Day	59	33	28	54	50	58	56	65
Comparison with Court Standard of								
90% in 8 months	97%	99%	99%	98%	99%	98%	98%	98%
98% in 18 months	99%	100%	100%	99%	100%	99%	99%	100%
100% in 36 months	100%	100%	100%	100%	100%	100%	100%	100%
Guardianship								
Age (days)								
50% Cases Resolved by Day	62	63	63	64	66	63	68	63
90% Cases Resolved by Day	128	170	140	158	187	184	182	148
Comparison with Court Standard of								
90% in 8 months	96%	95%	95%	94%	95%	93%	93%	96%
98% in 18 months	100%	99%	100%	99%	99%	99%	98%	100%
100% in 36 months	100%	100%	100%	100%	100%	100%	100%	100%
Adoption								
Age (days)								
50% Cases Resolved by Day	47	37	73	56	39	50	28	39
90% Cases Resolved by Day	263	222	617	237	225	804	156	130
Comparison with Court Standard of								
90% in 8 months	88%	95%	76%	90%	90%	78%	95%	95%
98% in 10 months	93%	95%	83%	92%	92%	81%	95%	98%
100% in 14 months	94%	96%	83%	94%	93%	83%	97%	98%
Parentage								
Age (days)								
50% Cases Resolved by Day	222	139	226	195	245	208	235	223
90% Cases Resolved by Day	495	461	515	539	476	489	408	421
Comparison with Court Standard of								
90% in 8 months	54%	63%	51%	62%	49%	57%	51%	52%
98% in 10 months	65%	73%	72%	69%	72%	69%	76%	72%
100% in 14 months	88%	87%	85%	86%	83%	86%	92%	90%

Table 3 (cont.) Age of Resolved Cases

King County Superior Court

Reporting Category	Age of Cases at Resolution							
	Q3/23	Q4/23	Q1/24	Q2/24	Q3/24	Q4/24	Q1/25	Q2/25
ITA (civil commitment) *								
Age (days)								
50% Cases Resolved by Day	10	10	13	11	13	14	10	11
90% Cases Resolved by Day	45	45	64	39	46	86	45	39
Juvenile Dependency (DEP)								
Age (days)								
50% Cases Resolved by Day	209	200	132	182	160	183	182	184
90% Cases Resolved by Day	459	489	433	530	432	371	338	368
Comparison with Court Standard of								
90% in 8 months	58%	54%	74%	68%	73%	56%	73%	70%
98% in 10 months	72%	67%	74%	73%	77%	75%	83%	82%
100% in 14 months	86%	79%	89%	81%	89%	92%	91%	93%
Juvenile Termination (TER)								
Age (days)								
50% Cases Resolved by Day	258	206	258	291	159	232	157	219
90% Cases Resolved by Day	504	808	869	717	544	894	283	458
Comparison with Court Standard of								
90% in 8 months	43%	61%	48%	41%	68%	52%	88%	58%
98% in 10 months	64%	73%	52%	52%	73%	55%	94%	64%
100% in 14 months	76%	80%	67%	76%	82%	55%	94%	84%
ARY/CHINS/OTHER								
Age (days)								
50% Cases Resolved by Day	35	34	35	32	32	35	35	35
90% Cases Resolved by Day	188	96	243	69	67	92	127	192
Comparison with Court Standard of								
90% in 8 months	94%	95%	90%	98%	97%	96%	100%	93%
98% in 10 months	97%	97%	96%	100%	97%	97%	100%	94%
100% in 14 months	97%	100%	100%	100%	97%	98%	100%	97%
Juvenile Truancy*								
Age (days)								
50% Cases Resolved by Day	414	286	356	399	604	286	380	380
90% Cases Resolved by Day	518	517	462	519	929	552	726	697
Juvenile Offense								
Age (days)								
50% Cases Resolved by Day	154	132	126	106	140	145	121	134
90% Cases Resolved by Day	385	358	397	331	306	370	329	398
Comparison with Court Standard of								
90% in 4 months	39%	49%	48%	56%	40%	44%	50%	45%
98% in 6 months	60%	63%	70%	75%	66%	63%	71%	64%
100% in 9 months	79%	84%	83%	85%	85%	81%	86%	79%
Criminal RALJ								
Age (days)								
50% Cases Resolved by Day	202	366	256	175	204	189	265	231
90% Cases Resolved by Day	427	504	531	578	471	550	414	485
Civil RALJ								
Age (days)								
50% Cases Resolved by Day	165	166	180	164	165	165	171	163
90% Cases Resolved by Day	318	243	728	226	325	309	204	485

* No standard yet.

Table 4. Active Pending Caseload Statistics
King County Superior Court

Reporting Category	Q3/23	Q4/23	Q1/24	Q2/24	Q3/24	Q4/24	Q1/25	Q2/25
Total (incl. RALJ)								
Previous Pending	21357	21942	21865	23044	24122	24439	24403	25595
New Filing	12246	12368	13811	14179	13727	13511	15255	15369
Resolved	11615	11720	12808	12909	13202	13685	14465	14728
End Pending	21942	21865	23044	24122	24439	24403	25595	25820
Resolution Rate*	0.948	0.948	0.927	0.910	0.962	1.013	0.948	0.958
Criminal (excl. RALJ)								
Previous Pending	4286	4222	3919	3918	4069	4010	4034	4143
New Filing	1248	994	1285	1314	1308	1262	1223	1453
Resolved	1338	1205	1291	1296	1355	1351	1421	1509
End Pending	4222	3919	3918	4069	4010	4034	4143	3955
Resolution Rate*	1.072	1.212	1.005	0.986	1.036	1.071	1.162	1.039
Civil (excl. RALJ)								
Previous Pending	7124	7615	8034	8394	9125	9429	9332	9714
New Filing	5261	5697	5773	6340	6333	6408	7454	7240
Resolved	4747	4917	5517	5427	5871	6494	7047	7045
End Pending	7615	8034	8394	9125	9429	9332	9714	9653
Resolution Rate*	0.902	0.863	0.956	0.856	0.927	1.013	0.945	0.973
Domestic								
Previous Pending	4448	4624	4404	4564	4664	4782	4649	4810
New Filing	1646	1452	1622	1713	1730	1473	1660	1673
Resolved	1488	1534	1513	1571	1592	1620	1566	1661
End Pending	4624	4404	4564	4664	4782	4649	4810	4805
Resolution Rate*	0.904	1.056	0.933	0.917	0.920	1.100	0.943	0.993
Probate								
Previous Pending	1485	1506	1572	1711	1699	1799	1863	1965
New Filing	1697	1825	2160	1928	1849	1733	1999	1947
Resolved	1656	1749	2002	1897	1751	1657	1895	1873
End Pending	1506	1572	1711	1699	1799	1863	1965	2031
Resolution Rate*	0.976	0.958	0.927	0.984	0.947	0.956	0.948	0.962
Guardianship								
Previous Pending	532	563	541	573	537	575	614	644
New Filing	263	225	284	233	250	261	261	292
Resolved	221	233	238	252	207	224	228	260
End Pending	563	541	573	537	575	614	644	669
Resolution Rate*	0.840	1.036	0.838	1.082	0.828	0.858	0.874	0.890
Adoption								
Previous Pending	263	248	237	238	229	223	211	239
New Filing	69	72	79	60	69	66	99	91
Resolved	84	73	63	71	71	82	74	95
End Pending	248	237	238	229	223	211	239	235
Resolution Rate*	1.217	1.014	0.797	1.183	1.029	1.242	0.747	1.044
Parentage								
Previous Pending	228	224	253	255	262	252	241	234
New Filing	77	98	80	112	93	69	67	101
Resolved	81	64	74	97	97	77	71	88
End Pending	224	253	255	262	252	241	234	245
Resolution Rate*	1.052	0.653	0.925	0.866	1.043	1.116	1.060	0.871
ITA (civil commitment)								
Previous Pending	309	356	333	362	414	505	452	527
New Filing	1328	1341	1391	1356	1368	1323	1332	1424
Resolved	1271	1273	1437	1304	1311	1424	1295	1369
End Pending	356	333	362	414	505	452	527	605
Resolution Rate*	0.957	0.949	1.033	0.962	0.958	1.076	0.972	0.961

* A value of "Resolution Rate" less than one indicates the resolution pace is slower than the filing pace.

Table 4 (cont.) Active Pending Caseload Statistics
King County Superior Court

Reporting Category	Q3/23	Q4/23	Q1/24	Q2/24	Q3/24	Q4/24	Q1/25	Q2/25
Juvenile Dependency (DEP)								
Previous Pending	240	207	217	242	246	296	333	339
New Filing	53	80	82	103	136	109	126	131
Resolved	86	70	53	59	82	61	109	105
End Pending	207	217	242	246	296	333	339	354
Resolution Rate*	1.623	0.875	0.646	0.573	0.603	0.560	0.865	0.802
Juvenile Termination (TER)								
Previous Pending	180	175	137	113	106	92	97	104
New Filing	50	23	26	36	30	35	26	11
Resolved	53	51	42	46	44	31	16	19
End Pending	175	137	113	106	92	97	104	93
Resolution Rate*	1.060	2.217	1.615	1.278	1.467	0.886	0.615	1.727
ARY/CHINS/OTHERS								
Previous Pending	129	121	143	129	143	157	219	238
New Filing	108	122	126	161	174	238	231	225
Resolved	110	103	129	148	150	176	216	246
End Pending	121	143	129	143	157	219	238	217
Resolution Rate*	1.019	0.844	1.024	0.919	0.862	0.739	0.935	1.093
Juvenile Truancy								
Previous Pending	1739	1689	1677	2092	2081	1829	1865	2063
New Filing	244	224	638	543	133	257	510	524
Resolved	294	236	224	552	370	244	306	170
End Pending	1689	1677	2092	2081	1829	1865	2063	2412
Resolution Rate*	1.205	1.054	0.351	1.017	2.782	0.949	0.600	0.324
Juvenile Offense								
Previous Pending	309	299	233	233	233	233	233	233
New Filing	168	180	180	235	223	249	233	218
Resolved	161	184	178	158	253	213	187	269
End Pending	299	302	369	448	408	417	496	448
Resolution Rate*	0.958	1.022	0.989	0.672	1.135	0.855	0.803	1.234
Criminal RALJ								
Previous Pending	47	49	55	47	62	47	48	58
New Filing	12	20	16	27	13	16	25	18
Resolved	8	16	23	12	29	14	16	9
End Pending	49	55	47	62	47	48	58	66
Resolution Rate*	0.667	0.800	1.438	0.444	2.231	0.875	0.640	0.500
Civil RALJ								
Previous Pending	38	44	41	37	37	35	28	21
New Filing	22	15	16	18	18	12	9	21
Resolved	17	12	24	19	19	17	18	10
End Pending	44	41	37	37	35	28	21	32
Resolution Rate*	0.773	0.800	1.500	1.056	1.056	1.417	2.000	0.476

* A value of "Resolution Rate" less than one indicates the resolution pace is slower than the filing pace.

Table 4-A. Active Reopened Cases and Modification Cases

Reporting Category	Q3/23	Q4/23	Q1/24	Q2/24	Q3/24	Q4/24	Q1/25	Q2/25
Re-opened without disposition	865	905	903	922	931	939	968	1003
Modification without disposition	522	503	506	398	379	362	372	415

Chart 4-A. Pending Caseload at Quarter End:
Total Judicial Cases Only ("Matters Filed with Clerk" excluded)

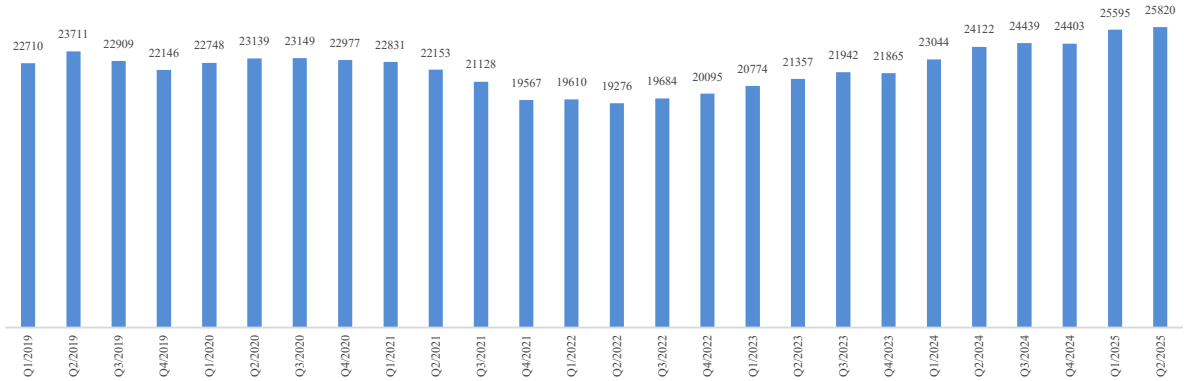


Chart 4-B. Pending Caseload at Quarter End: Criminal, Domestic, and Civil Cases

■ Criminal ■ Civil ■ Domestic

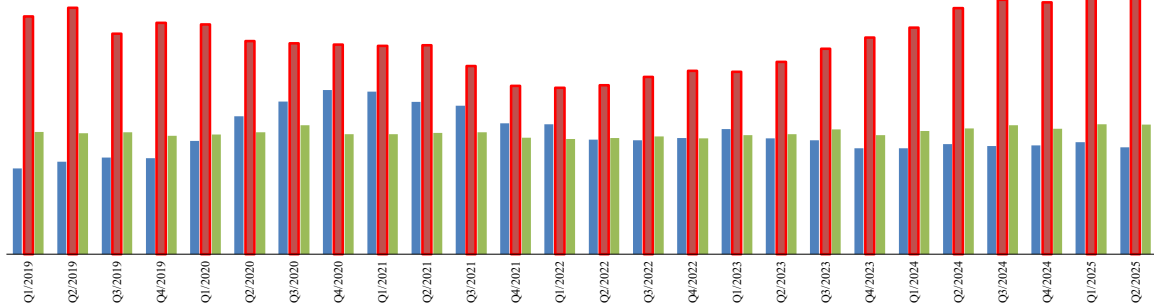
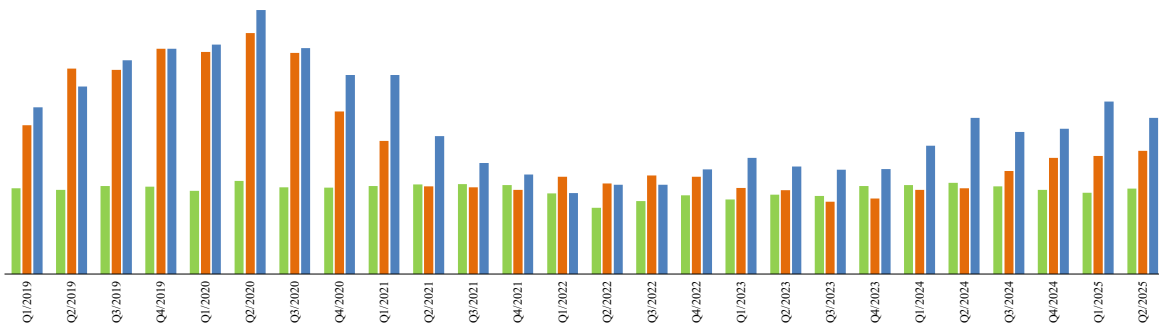


Chart 4-C. Pending Caseload at Quarter End:
Juvenile Offense, Paternity, and Dependency Cases

■ Parentage ■ Juvenile DEP ■ Juvenile Offense



Note: "Civil" is specifically defined in this report. The category of "Civil" does not include the following case types: domestic, probate, guardianship, adoption, Parentage, ITA (civil commitment), juvenile cases (dependency, at-risk youth, child-in-need of service), civil RAL, and tax filings that don't require judicial resources ("matters filed with clerk").

Table 5. Age of Pending Cases
King County Superior Court

Reporting Category	Age of Pending Cases and # of Cases in Each Age Interval							
	Q3/23	Q4/23	Q1/24	Q2/24	Q3/24	Q4/24	Q1/25	Q2/25
Criminal (excl. RALJ): # of Cases	4222	3919	3918	4069	4010	4034	4143	3955
Age (days)								
Median (50 percentile)	216	236	227	200	203	211	199	183
90 percentile	745	742	727	696	691	692	711	678
# of Cases in Age Interval								
0 - 60 days (0 - 2 months)	762	562	744	746	759	693	884	822
61 - 120 days (3 - 4 months)	555	532	516	678	606	609	615	674
121 - 180 days (5 - 6 months)	511	509	401	486	490	522	452	456
181 - 270 days (7 - 9 months)	634	561	569	507	605	603	555	517
> 270 days (> 9 months)	1760	1755	1688	1652	1550	1607	1637	1486
Civil (excl. RALJ): # of Cases	7615	8034	8394	9125	9429	9332	9714	9714
Age (days)								
Median (50 percentile)	144	137	137	129	138	140	119	119
90 percentile	545	550	509	405	390	411	391	391
# of Cases in Age Interval								
0 - 120 days (0 - 4 months)	3388	3657	3843	4372	4326	4269	4920	4779
121 - 240 days (5 - 8 months)	1659	1830	2135	2385	2628	2425	2186	2188
241 - 360 days (9 - 12 months)	968	1027	1016	1211	1332	1424	1433	1419
361 - 540 days (13 - 18 months)	821	691	640	670	702	773	763	862
541 - 720 days (19 - 24 months)	289	340	330	276	244	254	232	227
> 720 days (> 24 months)	490	489	430	211	197	187	180	178
Domestic: # of Cases	4624	4404	4564	4664	4782	4649	4810	4805
Age (days)								
Median (50 percentile)	151	157	159	145	148	163	162	145
90 percentile	548	570	556	537	515	519	519	519
# of Cases in Age Interval								
0 - 120 days (0 - 4 months)	1971	1776	1877	2064	2055	1854	2010	2120
121 - 240 days (5 - 8 months)	1170	1140	1142	1034	1225	1174	1133	1038
241 - 360 days (9 - 12 months)	594	669	688	713	640	800	792	722
361 - 540 days (13 - 18 months)	422	330	385	391	417	387	427	481
> 540 days (> 18 months)	467	489	472	462	445	434	448	444
Probate: # of Cases	1506	1572	1711	1699	1799	1863	1965	2031
Age (days)								
Median (50 percentile)	543	579	558	636	649	695	698	722
90 percentile	2260	2314	2350	2442	2491	2554	2589	2604
# of Cases in Age Interval								
0 - 120 days (0 - 4 months)	320	312	371	351	366	356	397	416
121 - 240 days (5 - 8 months)	183	162	166	149	155	156	171	148
241 - 360 days (9 - 12 months)	115	148	132	122	125	126	116	142
361 - 540 days (13 - 18 months)	132	136	169	164	168	167	165	157
> 540 days (> 18 months)	756	814	873	913	985	1058	1116	1168
Guardianship: # of Cases	563	541	573	537	575	614	644	669
Age (days)								
Median (50 percentile)	269	368	369	452	390	353	358	364
90 percentile	1354	1447	1522	1629	1705	1784	1873	1952
# of Cases in Age Interval								
0 - 120 days (0 - 4 months)	203	177	210	181	204	209	223	227
121 - 240 days (5 - 8 months)	63	43	47	43	47	67	62	60
241 - 360 days (9 - 12 months)	40	48	28	29	22	33	38	47
361 - 540 days (13 - 18 months)	49	53	40	34	38	31	29	40
> 540 days (> 18 months)	208	220	248	250	264	274	292	295

Table 5 (cont.). Age of Pending Cases
King County Superior Court

Reporting Category	Age of Pending Cases and # of Cases in Each Age Interval							
	Q3/23	Q4/23	Q1/24	Q2/24	Q3/24	Q4/24	Q1/25	Q2/25
Adoption: # of Cases	248	237	238	229	223	211	239	235
Age (days)								
Median (50 percentile)	714	921	696	829	956	1105	978	1089
90 percentile	2228	2320	2366	2475	2567	2659	2731	2812
# of Cases in Age Interval								
0 - 120 days (0 - 4 months)	39	32	52	41	39	37	63	46
121 - 240 days (5 - 8 months)	25	18	20	16	18	13	10	20
241 - 360 days (9 - 12 months)	13	12	9	11	8	11	9	8
361 - 540 days (13 - 18 months)	33	24	21	16	14	11	14	15
> 540 days (> 18 months)	138	151	136	145	144	139	143	146
Parentage: # of Cases	224	253	255	262	252	241	234	245
Age (days)								
Median (50 percentile)	147	157	157	157	138	173	190	159
90 percentile	443	453	447	425	419	432	473	473
# of Cases in Age Interval								
0 - 120 days (0 - 4 months)	94	108	93	115	106	75	77	105
121 - 240 days (5 - 8 months)	58	64	77	62	77	97	77	47
241 - 360 days (9 - 12 months)	34	39	46	44	31	31	38	46
361 - 540 days (13 - 18 months)	23	29	25	26	27	25	24	27
> 540 days (> 18 months)	15	13	14	15	11	13	18	20
ITA (civil commitment): # of Cases	356	333	362	414	505	452	527	605
Age (days)								
Median (50 percentile)	38	49	41	44	67	42	42	60
90 percentile	418	580	598	664	666	790	833	826
# of Cases in Age Interval								
0 - 120 days (0 - 4 months)	213	227	244	270	316	316	316	371
121 - 240 days (5 - 8 months)	22	40	29	45	65	65	65	57
> 240 days (> 8 months)	39	66	89	99	124	124	124	177
Juv Dependency (DEP): # of Cases	207	217	242	246	296	333	339	354
Age (days)								
Median (50 percentile)	202	199	180	132	123	132	147	139
90 percentile	480	544	586	601	609	616	585	601
# of Cases in Age Interval								
0 - 60 days (0 - 2 months)	38	42	56	57	94	66	86	86
61 - 120 days (3 - 4 months)	22	41	24	55	54	88	63	75
121 - 180 days (5 - 6 months)	31	21	45	39	36	50	49	56
181 - 270 days (7 - 9 months)	44	26	22	20	41	47	52	39
> 270 days (> 9 months)	72	87	95	75	71	82	89	98
Juv Termination (TER): # of Cases	175	137	113	106	92	97	104	93
Age (days)								
Median (50 percentile)	205	271	269	212	202	156	168	236
90 percentile	891	985	1076	1130	1259	1351	1404	1532
# of Cases in Age Interval								
0 - 60 days (0 - 2 months)	28	13	12	18	18	18	19	8
61 - 120 days (3 - 4 months)	25	14	16	22	19	24	18	18
121 - 180 days (5 - 6 months)	24	26	5	11	7	14	18	8
181 - 270 days (7 - 9 months)	22	15	24	3	7	7	11	22
> 270 days (> 9 months)	76	69	56	52	41	34	38	37

Table 5 (cont.). Age of Pending Cases
King County Superior Court

Reporting Category	Age of Pending Cases and # of Cases in Each Age Interval							
	Q3/23	Q4/23	Q1/24	Q2/24	Q3/24	Q4/24	Q1/25	Q2/25
ARY/CHINS/OTHER: # of Cases	121	143	129	143	157	219	238	217
Age (days)								
Median (50 percentile)	159	168	122	140	111	75	90	109
90 percentile	2104	2124	2287	2293	2384	2365	2415	2546
# of Cases in Age Interval								
0 - 60 days (0 - 2 months)	33	45	49	56	66	103	105	86
61 - 120 days (3 - 4 months)	18	18	14	14	18	27	23	25
121 - 180 days (5 - 6 months)	12	13	6	5	6	18	27	23
181 - 270 days (7 - 9 months)	12	14	9	11	7	13	15	21
> 270 days (> 9 months)	46	53	51	57	60	58	68	62
Juvenile Truancy: # of Cases	1689	1677	2092	2081	1829	1865	2063	2412
Age (days)								
Median (50 percentile)	185	245	257	171	228	294	312	271
90 percentile	520	600	662	671	522	594	622	712
# of Cases in Age Interval								
0 - 60 days (0 - 2 months)	5	173	427	377	4	195	353	387
61 - 120 days (3 - 4 months)	434	45	288	342	330	60	278	291
121 - 180 days (5 - 6 months)	387	239	110	360	300	95	103	317
181 - 270 days (7 - 9 months)	400	508	241	170	537	453	93	207
> 270 days (> 9 months)	463	712	1026	832	658	1062	1236	1210
Juvenile Offense: # of Cases	299	302	369	448	408	417	496	448
Age (days)								
Median (50 percentile)	106	90	89	103	105	97	111	112
90 percentile	374	305	313	315	358	363	379	351
# of Cases in Age Interval								
0 - 60 days (0 - 2 months)	98	104	127	134	115	151	135	122
61 - 120 days (3 - 4 months)	64	82	98	117	111	78	141	119
121 - 180 days (5 - 6 months)	50	45	54	85	57	75	75	54
181 - 270 days (7 - 9 months)	42	34	40	53	52	42	63	77
> 270 days (> 9 months)	45	37	50	59	73	71	82	76
Criminal RALJ: # of Cases	49	55	47	62	47	48	58	66
Age (days)								
Median (50 percentile)	243	145	124	110	140	187	129	132
90 percentile	447	459	528	367	432	343	369	414
# of Cases in Age Interval								
0 - 60 days (0 - 2 months)	9	17	9	21	5	10	19	13
61 - 120 days (3 - 4 months)	6	7	12	11	13	9	9	16
121 - 180 days (5 - 6 months)	7	6	11	9	11	4	11	13
181 - 270 days (7 - 9 months)	5	8	4	10	9	14	4	10
> 270 days (> 9 months)	22	17	11	11	9	11	15	14
Civil RALJ: # of Cases	44	41	37	37	35	28	21	32
Age (days)								
Median (50 percentile)	90	110	108	97	81	107	116	69
90 percentile	580	672	243	334	238	216	306	287
# of Cases in Age Interval								
0 - 60 days (0 - 2 months)	16	14	13	9	10	5	6	14
61 - 120 days (3 - 4 months)	10	8	10	13	12	11	5	9
121 - 180 days (5 - 6 months)	4	7	7	8	7	7	4	3
181 - 270 days (7 - 9 months)	5	2	5	2	3	3	2	2
> 270 days (> 9 months)	9	10	2	5	3	2	4	4

Table 6. Seattle vs. Regional Justice Center (KNT): Filing, Resolution, Pending Caseload (%)
King County Superior Court

	Q2/24		Q3/24		Q4/24		Q1/25		Q2/25	
	SEA	KNT	SEA	KNT	SEA	KNT	SEA	KNT	SEA	KNT
Filings Total	64%	36%	64%	36%	65%	35%	64%	36%	65%	35%
Criminal (excl. RALJ)	57%	43%	58%	42%	59%	41%	61%	39%	61%	39%
Civil (excl. RALJ)	58%	42%	57%	43%	58%	42%	59%	41%	61%	39%
Domestic	63%	37%	62%	38%	61%	39%	60%	40%	62%	38%
Probate	69%	31%	70%	30%	72%	28%	70%	30%	71%	29%
Guardianship	58%	43%	47%	53%	62%	38%	55%	45%	51%	49%
Adoption	75%	25%	78%	22%	73%	27%	77%	23%	79%	21%
Parentage	50%	50%	45%	55%	52%	48%	39%	61%	54%	46%
ITA (civil commitment)	100%	--	100%	--	100%	--	100%	--	100%	--
Juv. Dependency (DEP)	83%	17%	73%	17%	61%	17%	58%	17%	69%	17%
Juv. Termination (TER)	47%	53%	70%	30%	74%	26%	85%	15%	64%	36%
ARY/CHINS/Other	52%	48%	47%	53%	51%	49%	46%	54%	46%	54%
Juvenile Truancy	32%	68%	3%	97%	41%	59%	38%	62%	34%	66%
Juvenile Offense	100%	--	100%	--	100%	--	100%	--	100%	--
Criminal RALJ	78%	22%	62%	38%	81%	19%	56%	44%	72%	28%
Civil RALJ	83%	17%	61%	39%	67%	33%	78%	22%	62%	38%
Resolution Total	64%	36%	65%	35%	65%	35%	64%	36%	66%	34%
Criminal (excl. RALJ)	59%	41%	60%	40%	64%	36%	62%	38%	63%	37%
Civil (excl. RALJ)	58%	42%	57%	42%	57%	42%	57%	42%	60%	42%
Domestic	64%	36%	64%	36%	64%	36%	63%	37%	58%	42%
Probate	68%	32%	70%	30%	73%	27%	71%	29%	71%	29%
Guardianship	53%	47%	56%	44%	51%	49%	60%	40%	55%	45%
Adoption	83%	17%	82%	18%	66%	34%	73%	27%	78%	22%
Parentage	52%	48%	44%	48%	39%	48%	44%	48%	51%	48%
ITA (civil commitment)	100%	--	100%	--	100%	--	100%	--	100%	--
Juv. Dependency (DEP)	83%	17%	70%	30%	80%	20%	70%	30%	56%	44%
Juv. Termination (TER)	74%	26%	61%	39%	68%	32%	63%	37%	58%	42%
ARY/CHINS/Other	59%	41%	47%	53%	51%	49%	47%	53%	41%	59%
Juvenile Truancy	32%	68%	33%	67%	37%	63%	53%	47%	49%	51%
Juvenile Offense	100%	--	100%	--	100%	--	100%	--	100%	--
Criminal RALJ	58%	42%	90%	10%	50%	50%	56%	44%	56%	44%
Civil RALJ	84%	16%	95%	5%	77%	23%	67%	33%	70%	30%
Pending Total	61%	39%	61%	39%	60%	40%	61%	39%	61%	39%
Criminal (excl. RALJ)	60%	40%	59%	41%	57%	43%	57%	43%	56%	44%
Civil (excl. RALJ)	63%	37%	63%	37%	63%	37%	65%	35%	65%	35%
Domestic	60%	40%	59%	41%	59%	41%	58%	42%	59%	41%
Probate	70%	30%	70%	30%	70%	30%	70%	30%	70%	30%
Guardianship	56%	44%	52%	48%	56%	44%	54%	46%	53%	47%
Adoption	66%	34%	66%	34%	67%	33%	70%	30%	70%	30%
Parentage	37%	63%	39%	61%	41%	59%	39%	61%	41%	59%
ITA (civil commitment)	100%	--	100%	--	100%	--	100%	--	100%	--
Juv. Dependency (DEP)	70%	30%	71%	29%	66%	34%	61%	39%	66%	34%
Juv. Termination (TER)	68%	32%	71%	29%	74%	26%	76%	24%	76%	24%
ARY/CHINS/Other	60%	40%	60%	40%	57%	43%	54%	46%	60%	40%
Juvenile Truancy	35%	65%	33%	67%	33%	67%	32%	68%	31%	69%
Juvenile Offense	100%	--	100%	--	100%	--	100%	--	100%	--
Criminal RALJ	79%	21%	68%	32%	77%	23%	74%	26%	76%	24%
Civil RALJ	87%	13%	69%	31%	68%	32%	71%	29%	66%	34%

Excluding Cases filed with the Clerk

Table 7. Quarterly Utilization of Pro Tem Judges/Commissioners ⁽¹⁾

Category	Q1/23	Q2/23	Q3/23	Q4/23	Q1/24	Q2/24	Q3/24	Q4/24	Q1/25	Q2/25
Grand Total	1543	1688	1226	1855	1894	2494	1502	1989	1514	2100
FTE Equivalent ⁽²⁾	3.4	3.8	2.7	4.1	4.2	5.5	3.3	4.4	3.4	4.7
By Work Type										
Pro Tem Judge	93	114	158	263	26	209	125	123	8	94
Pro Tem Commissioner	1450	1574	1068	1592	1868	2286	1377	1866	1506	2006
By Location										
KCCH	830	588	453	797	897	960	734	444	465	1139
MRJC	480	572	328	632	698	978	427	1054	475	546
Juvenile	134	295	327	299	188	321	301	288	407	183
ITA	98	216	118	127	111	235	40	202	158	233
Other or Unspecified	0	18	0	0	0	0	0	0	9	0
By Calendar Type										
Criminal	16	61	30	95	13	77	78	40	8	53
Civil	3	0	3	103	0	31	2	0	0	0
Ex Parte	340	470	308	514	438	347	263	444	203	331
Family Law/Domestic	944	629	440	717	1145	1483	819	1015	715	1280
Dependency	68	259	202	234	175	220	256	205	407	156
Juvenile Offense	55	22	115	65	0	25	22	28	0	27
BECCA	12	15	10	0	13	77	24	55	0	0
ITA	98	216	118	127	111	235	40	202	158	233
Juvenile Drug Court	0	0	0	0	0	0	0	0	0	0
Family Treatment Court	0	0	0	0	0	0	0	0	0	0
Plea Calendar	0	0	0	0	0	0	0	0	0	0
Status/Non-Compliance	0	0	0	0	0	0	0	0	0	0
Other or Unspecified	8	18	0	0	0	0	0	0	24	20
By Reason										
Vacation Backfill	82	61	125	117	7	21	2	2	8	94
Medical Backfill	1461	1580	1078	1589	1881	2362	1401	1921	1482	1986
Duty Time	0	22	24	145	6	111	99	66	0	0
Conference Coverage	0	8	0	6	0	0	0	0	0	0
Congestion	0	0	0	0	0	0	0	0	0	0
Vacancy Coverage	0	0	0	0	0	0	0	0	0	0
Other or Unspecified	0	18	0	0	0	0	0	0	24	20

(1) This table is based on the time sheet for compensation.

(2) Judge FTE Equivalent = # of hours / [7.5 hours/day * 20 days/month * 3 months] = # of hours/450.

Data for the most current quarter are incomplete at reporting time and will be updated in next quarterly report.

The Pro Tem hours are provided quarterly by the Administrative Services Department of King County Superior Court.

Table 8. Ex Parte and Family Law Hearings and Documents Signed

Ex Parte: Hearings Held and Documents Signed								
	2024Q3		2024Q4		2025Q1		2025Q2	
	Hearings	Documents Signed	Hearings	Documents Signed	Hearings	Documents Signed	Hearings	Documents Signed
KNT (EXP04/05)								
Civil	720	1228	1285	2342	951	2059	578	2034
Domestic	42	443	73	508	49	531	53	652
Probate/Guardianship	413	495	414	373	313	284	401	459
Adoption/Paternity	13	34	31	68	18	51	19	45
Ex Parte Judge Panel (EXP08)		516		915		548		742
Ex Parte Via Clerk (EXP06)		3486		3806		4847		4654
KNT Subtotal	1188	6202	1803	8012	1331	8320	1051	8586
SEA (EXP01/02)								
Civil	915	1858	1272	2377	1195	2627	867	2840
Domestic	73	618	80	758	84	810	80	777
Probate/Guardianship	788	930	779	940	758	835	679	824
Adoption/Paternity	57	130	52	143	47	138	75	160
Ex Parte Judge Panel (EXP08)		1220		2330		1429		1533
Ex Parte Via Clerk (EXP07)		6578		6854		7637		8099
SEA Total	1833	11334	2183	13402	2084	13476	1701	14233
KNT/SEA Total	3021	17536	3986	21414	3415	21796	2752	22819
FAMILY LAW: Hearings Held and Documents Signed								
	2024Q3		2024Q4		2025Q1		2025Q2	
	Hearings	Documents Signed	Hearings	Documents Signed	Hearings	Documents Signed	Hearings	Documents Signed
KNT (FAM02)								
Civil	1288	899	1374	999	1447	932	1501	1050
Domestic	294	815	235	602	262	734	293	739
Adoption/Paternity	88	239	88	219	82	271	90	246
KNT Subtotal	1670	1953	1697	1820	1791	1937	1884	2035
SEA (FAM01)								
Civil	1419	1224	1512	1405	1438	1176	1452	1431
Domestic	464	1017	463	950	407	825	497	972
Adoption/Paternity	34	179	47	179	49	154	40	151
SEA Total	1917	2420	2022	2534	1894	2155	1989	2554
KNT/SEA Total	3587	4373	3719	4354	3685	4092	3873	4589

Glossary and Definition

Active Status

A case is active if it is not on suspense status (see Suspense Status).

Completion

A case is completed if dispositive document is filed with the court following resolution.

Jury Trial

A hearing is reported as a jury trial if the jury is impaneled.

Non-Jury Trial

A hearing is reported as a non-jury trial if an opening statement is made, waived, or reserved.

Pending Case

A case is defined as pending if it is unresolved and active (not in suspense).

Post-disposition Modifications

Petition to modify parenting plan after the resolution of the original case, based on the modification schedule.

Resolution

A case is resolved if all issues in the complaint are fully adjudicated.

Suspended Case

A case is placed in suspense status from active status during the reporting period.

Suspense Status

A case is on suspense status if it is on warrant, appeal, stay, mediation, arbitration ("Deferred Prosecution" is not a suspense status, but is treated as a resolution).

Trial

A hearing set before a judge or jury in which all the issues in the case are meant to be resolved. A trial normally includes opening statements to the court or jury stating what evidence will show, introduction of witnesses and exhibits for direct and cross examination, final arguments to the court or jury in which counsel argue both the evidence and the law, and judgment by the court or jury stating what the facts of the case are and what law applies to the facts. In a jury case, it also includes the selection of the jury. A trial can be held for one or more cases. A single trial may be held to adjudicate more than one case (as defined above).