



# King County

Department of Judicial Administration  
*Catherine Cornwall*  
*Director and Superior Court Clerk*  
(206) 296-9300 (206) 296-0100 TTY/TDD

King County Superior Court

## Civil Department Statistical Report

April 2026

Department of Judicial Administration  
Prepared by: Shiquan Liao, Ph.D., Statistician

May 15, 2026

**Report #: CIVIL-2026-04**

*Seattle Courthouse*  
516 Third Avenue Room E609  
Seattle, WA 98104-2386

*Maleng Regional Justice Center*  
401 Fourth Avenue North Room 2C  
Kent, WA 98032-4429

*Clark Children and Family  
Justice Center*  
1211 East Alder Room 3015  
Seattle, WA 98122-5598

## Civil Statistics Summary

The civil statistics report provides an overview of the caseload for the Civil and UFC Departments. The report includes the number of filings, number of resolutions, number of pending cases, age of resolved cases, and age of pending cases for both the SEA and MRJC locations.

The following categories are included in this report: **Civil, Domestic, Probate, Guardianship, Adoption, and Parentage.** This report includes all cases in these categories, regardless of whether a judge is assigned at filing or not.

*Please note that the category of “civil” in the tables of this report is more narrowly defined. Readers are encouraged to check the Appendix at the end of this report for precise definition of the terminology used in this report.*

- **Filings (Table 1, Figures 1)**

In April 2026, the total number of filings was 3,954 cases. Of those cases filed in the month, 34% were MRJC cases, and the remaining 66% were SEA cases. In 2026, the court received an average of 3,814 cases in the reporting categories per month. In comparison, the average monthly filings in 2019, 2020, 2021, 2022, 2023, 2024, and 2025 were 3,083, 2,436, 2,429, 2,601, 2,953, 3,398, and 3,705 cases, respectively.

- **Resolutions (Table 2, Figures 2)**

The total resolutions in April 2026 were 3,742 cases. Of those cases resolved in the month, 36% of the resolutions were MRJC cases. In 2026, on average the court resolved 3,571 cases in the reporting categories per month. In comparison, the average monthly resolutions in 2019, 2020, 2021, 2022, 2023, 2024, and 2025 were 3,091, 2,378, 2,450, 2,592, 2,756, 3,240, and 3,530 cases, respectively.

- **The Age of Resolved Cases (Table 3)**

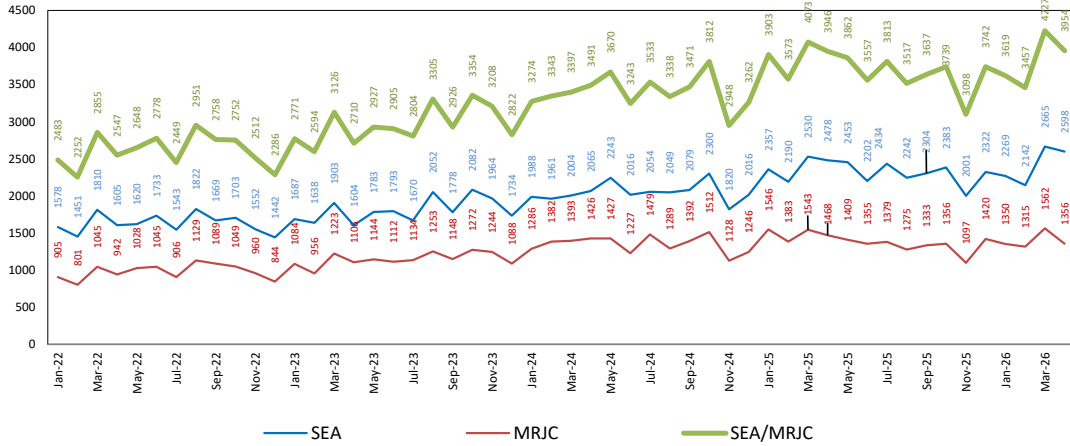
Table 3 shows the comparison between the court-adopted timeline standard (as suggested by the State Advisory Committee) with the actual age of resolved cases (time from filing to resolution).

- **Pending Caseload (Table 4, Figures 3) and Age of Pending Cases (Table 5)**

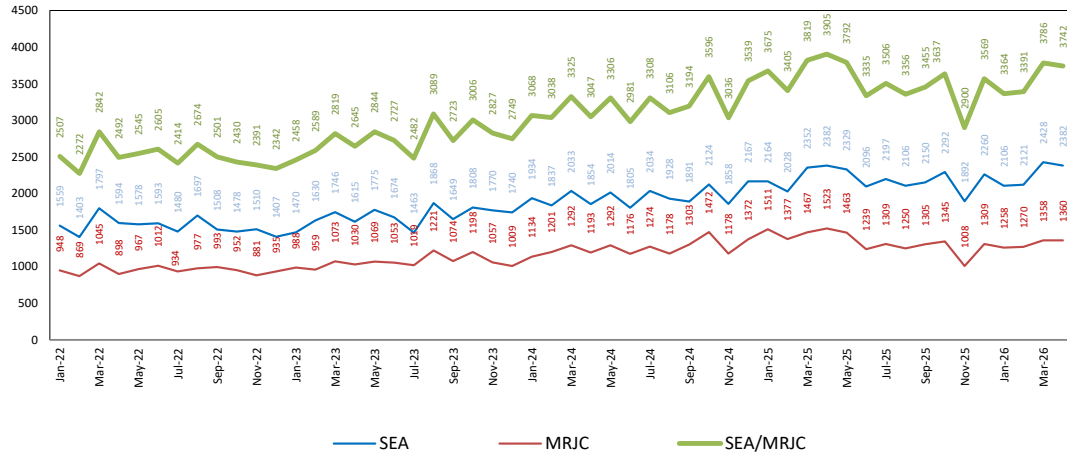
At the end of April 2026, the pending caseload for the civil department was 19,043 cases, 64% being SEA cases and 36% being MRJC cases. The age breakdown of pending cases is presented in Table 5. SEA had 157 civil cases over 24 months and 255 domestic cases over 18 months. MRJC had 67 general civil cases over 24 months and 224 domestic cases over 18 months. In addition, the court has a large number of probate, guardianship, and adoption cases over 18 months without resolution at both locations.

**Conclusions: In 2026, the monthly average filings in the reporting categories were 3,814 cases. In the same month, the court resolved 3,571 cases per month. At the end of April 2026, the total pending caseload in the reporting categories was 19,043 cases. In comparison, the pending caseload in the same reporting categories was 15,059, 14,371, 14,085, 12,941, 13,471, 15,082, and 16,938, and 18,428 at the year end of 2018, 2019, 2020, 2021, 2022, 2023, 2024, and 2025, respectively.**

Figure 1. Monthly Filings for SEA, MRJC and SEA/MRJC Combined



3378%



19297

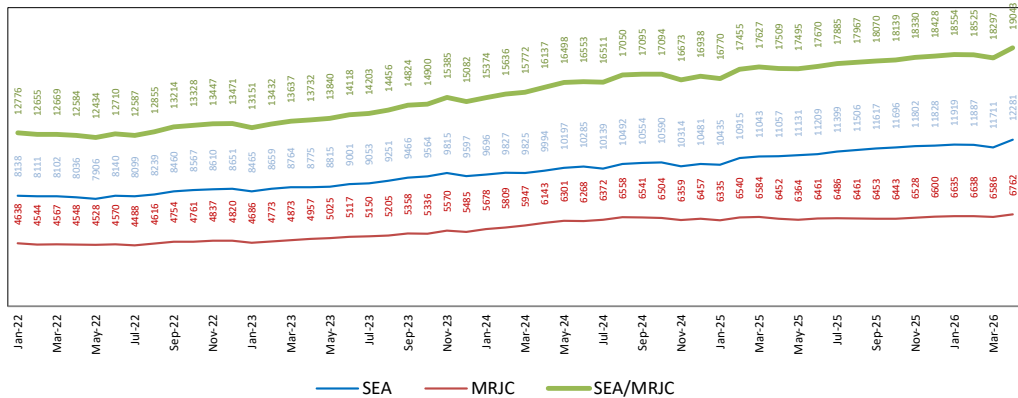


Table 1. Monthly New Filings

SEA	Jan	Feb	Mar	Apr	May	Jun	Jul	Aug	Sep	Oct	Nov	Dec
<b>TOTAL - SEA</b>												
2024	1988	1961	2004	2065	2243	2016	2054	2049	2079	2300	1820	2016
2025	2357	2190	2530	2478	2453	2202	2434	2242	2304	2383	2001	2322
2026	2269	2142	2665	2598								
<b>Civil - SEA</b>												
2024	1053	1068	1057	1181	1284	1228	1186	1187	1244	1391	1114	1232
2025	1473	1370	1587	1524	1544	1373	1496	1364	1415	1500	1227	1503
2026	1356	1341	1668	1679								
<b>Domestic - SEA</b>												
2024	335	326	355	369	368	335	339	360	367	346	274	280
2025	339	298	360	351	370	314	361	354	391	360	296	312
2026	385	308	336	358								
<b>Probate - SEA</b>												
2024	524	479	497	444	500	380	458	427	401	475	369	409
2025	463	445	496	506	456	419	480	445	435	447	369	409
2026	423	397	539	456								
<b>Guardianship - SEA</b>												
2024	46	46	56	40	51	43	37	41	39	57	38	67
2025	54	40	50	49	45	56	66	56	38	45	75	78
2026	84	64	85	72								
<b>Adoption - SEA</b>												
2024	16	27	25	12	20	13	24	14	16	17	17	14
2025	23	33	20	32	21	19	15	9	15	11	22	13
2026	9	20	26	18								
<b>Parentage - SEA</b>												
2024	14	15	14	19	20	17	10	20	12	14	8	14
2025	5	4	17	16	17	21	16	14	10	20	12	7
2026	12	12	11	15								

MRJC	Jan	Feb	Mar	Apr	May	Jun	Jul	Aug	Sep	Oct	Nov	Dec
<b>TOTAL - MRJC</b>												
2024	1286	1382	1393	1426	1427	1227	1479	1289	1392	1512	1128	1246
2025	1546	1383	1543	1468	1409	1355	1379	1275	1333	1356	1097	1420
2026	1350	1315	1562	1356								
<b>Civil - MRJC</b>												
2024	826	908	877	901	947	817	991	814	929	1024	797	862
2025	1066	945	1022	950	947	923	934	841	881	902	717	1024
2026	901	846	1052	888								
<b>Domestic - MRJC</b>												
2024	205	172	229	248	206	187	237	203	224	230	161	182
2025	215	198	250	242	219	177	212	184	221	197	183	175
2026	206	204	226	216								
<b>Probate - MRJC</b>												
2024	203	243	214	230	198	176	185	188	190	197	127	156
2025	198	190	207	202	171	193	173	183	173	204	128	132
2026	161	186	182	178								
<b>Guardianship - MRJC</b>												
2024	42	47	47	30	39	30	49	49	35	41	27	31
2025	38	34	45	47	48	47	41	44	40	35	50	66
2026	65	67	79	57								
<b>Adoption - MRJC</b>												
2024	2	2	7	3	7	6	4	8	3	6	6	6
2025	12	6	5	9	7	3	7	4	3	5	2	1
2026	5	2	8	5								
<b>Parentage - MRJC</b>												
2024	8	10	19	14	30	12	13	27	11	14	10	9
2025	17	10	14	18	17	12	12	19	15	13	17	22
2026	12	10	15	12								

“Civil” includes all civil actions (including RALJ), except “Matters Filed with Clerk” (Petition for Order Granting Judgment on Confession of Judgment, Tax Warrants, Abstract of Judgment, Foreign Judgment, and Transcript of Judgment), Domestic, Probate, Guardianship, Adoption, and Paternity cases.

Table 2. Monthly Resolutions

SEA	Jan	Feb	Mar	Apr	May	Jun	Jul	Aug	Sep	Oct	Nov	Dec
<b>TOTAL - SEA</b>												
2024	1934	1837	2033	1854	2014	1805	2034	1928	1891	2124	1858	2167
2025	2164	2028	2352	2382	2329	2096	2197	2106	2150	2292	1892	2260
2026	2106	2121	2428	2382								
<b>Civil - SEA</b>												
2024	1101	1019	1106	984	1074	1077	1146	1125	1116	1267	1094	1359
2025	1309	1217	1473	1508	1458	1288	1321	1266	1269	1393	1136	1384
2026	1314	1311	1456	1519								
<b>Domestic - SEA</b>												
2024	305	309	336	372	347	290	355	327	338	355	320	354
2025	342	329	312	306	330	330	324	332	378	328	306	354
2026	299	305	339	345								
<b>Probate - SEA</b>												
2024	464	430	510	417	498	371	454	405	370	435	375	391
2025	445	404	491	473	463	388	477	413	397	452	354	414
2026	403	374	510	430								
<b>Guardianship - SEA</b>												
2024	42	49	48	44	49	41	42	36	38	37	39	39
2025	43	49	45	48	40	56	51	70	79	79	63	74
2026	68	93	98	66								
<b>Adoption - SEA</b>												
2024	15	14	20	24	24	11	19	22	17	15	24	15
2025	12	22	20	31	24	19	6	15	10	17	21	21
2026	11	16	16	12								
<b>Parentage - SEA</b>												
2024	7	16	13	13	22	15	18	13	12	15	6	9
2025	13	7	11	16	14	15	18	10	17	23	12	13
2026	11	22	9	10								

MRJC	Jan	Feb	Mar	Apr	May	Jun	Jul	Aug	Sep	Oct	Nov	Dec
<b>TOTAL - MRJC</b>												
2024	1134	1201	1292	1193	1292	1176	1274	1178	1303	1472	1178	1372
2025	1511	1377	1467	1523	1463	1239	1309	1250	1305	1345	1008	1309
2026	1258	1270	1358	1360								
<b>Civil - MRJC</b>												
2024	718	726	871	746	812	753	867	755	881	1005	842	944
2025	1105	953	1008	1043	967	791	807	785	868	827	659	870
2026	867	816	882	913								
<b>Domestic - MRJC</b>												
2024	186	198	179	176	198	188	208	177	187	210	171	210
2025	190	185	208	225	243	227	247	204	214	220	169	221
2026	190	176	217	188								
<b>Probate - MRJC</b>												
2024	177	229	192	208	214	188	154	181	187	183	119	154
2025	165	188	202	188	194	167	184	184	139	212	117	139
2026	143	185	178	175								
<b>Guardianship - MRJC</b>												
2024	35	29	35	42	46	30	27	34	30	41	28	40
2025	31	30	30	43	38	35	52	53	64	73	48	63
2026	48	79	66	65								
<b>Adoption - MRJC</b>												
2024	3	4	7	7	2	3	3	7	3	9	5	14
2025	8	6	6	11	7	3	3	8	7	6	5	3
2026	1	2	2	4								
<b>Parentage - MRJC</b>												
2024	15	15	8	14	19	14	15	24	15	24	13	10
2025	12	15	13	13	14	16	16	16	13	14	10	13
2026	9	12	13	15								

"Civil" includes all civil actions (including RAL), except "Matters Filed with Clerk" (Petition for Order Granting Judgment on Confession of Judgment, Tax Warrants, Abstract of Judgment, Foreign Judgment, and Transcript of Judgment), Domestic, Probate, Guardianship, Adoption, and Parentage cases.

Table 3. Percentage of Cases Resolved in Specified Time Intervals

SEA	Apr 2025	May 2025	Jun 2025	Jul 2025	Aug 2025	Sep 2025	Oct 2025	Nov 2025	Dec 2025	Jan 2026	Feb 2026	Mar 2026	Apr 2026
<b>Civil - SEA</b>													
90% in 12 months	90%	92%	91%	91%	93%	89%	88%	91%	89%	89%	88%	87%	89%
98% in 18 months	96%	98%	97%	97%	98%	95%	96%	96%	96%	96%	96%	96%	96%
100% in 24 months	98%	99%	99%	98%	99%	99%	98%	99%	99%	98%	99%	98%	99%
<b>Domestic - SEA</b>													
90% in 8 months	54%	59%	65%	59%	63%	59%	58%	60%	64%	61%	64%	55%	55%
98% in 10 months	63%	69%	75%	69%	71%	67%	68%	68%	76%	68%	71%	63%	66%
100% in 14 months	84%	87%	91%	85%	89%	85%	84%	85%	88%	84%	88%	80%	86%
<b>Probate - SEA</b>													
90% in 8 months	99%	97%	97%	98%	99%	98%	99%	99%	100%	99%	99%	99%	98%
98% in 18 months	99%	99%	99%	100%	99%	100%	100%	100%	100%	100%	100%	99%	99%
100% in 36 months	99%	100%	100%	100%	99%	100%	100%	100%	100%	100%	100%	100%	99%
<b>Guardianship - SEA</b>													
90% in 8 months	96%	98%	100%	98%	59%	67%	53%	87%	92%	96%	70%	76%	92%
98% in 18 months	100%	100%	100%	100%	60%	68%	60%	99%	99%	100%	75%	85%	98%
100% in 36 months	100%	100%	100%	100%	60%	68%	62%	100%	100%	100%	80%	91%	100%
<b>Adoption - SEA</b>													
90% in 8 months	97%	100%	90%	100%	80%	90%	88%	100%	91%	73%	100%	75%	92%
98% in 10 months	100%	100%	100%	100%	93%	100%	88%	100%	91%	91%	100%	88%	92%
100% in 14 months	100%	100%	100%	100%	100%	100%	94%	100%	91%	100%	100%	94%	92%
<b>Parentage - SEA</b>													
90% in 8 months	63%	79%	67%	89%	60%	65%	65%	83%	85%	46%	73%	78%	70%
98% in 10 months	81%	79%	80%	95%	60%	65%	74%	83%	92%	46%	82%	78%	80%
100% in 14 months	81%	93%	100%	100%	90%	71%	87%	92%	100%	55%	86%	100%	100%

MRJC	Apr 2025	May 2025	Jun 2025	Jul 2025	Aug 2025	Sep 2025	Oct 2025	Nov 2025	Dec 2025	Jan 2026	Feb 2026	Mar 2026	Apr 2026
<b>Civil - MRJC</b>													
90% in 12 months	94%	94%	96%	94%	95%	90%	90%	91%	90%	94%	92%	91%	94%
98% in 18 months	99%	99%	99%	99%	98%	96%	97%	98%	95%	97%	97%	97%	98%
100% in 24 months	99%	99%	99%	100%	100%	99%	99%	100%	99%	99%	99%	99%	99%
<b>Domestic - MRJC</b>													
90% in 8 months	52%	51%	54%	60%	55%	62%	54%	54%	55%	60%	52%	50%	48%
98% in 10 months	60%	59%	64%	67%	62%	68%	61%	65%	68%	68%	59%	59%	60%
100% in 14 months	88%	88%	87%	85%	87%	84%	80%	85%	84%	90%	82%	86%	81%
<b>Probate - MRJC</b>													
90% in 8 months	95%	97%	98%	98%	97%	98%	98%	100%	99%	98%	98%	98%	99%
98% in 18 months	98%	99%	99%	100%	100%	100%	100%	100%	99%	99%	99%	100%	100%
100% in 36 months	100%	100%	100%	100%	100%	100%	100%	100%	100%	100%	100%	100%	100%
<b>Guardianship - MRJC</b>													
90% in 8 months	91%	95%	94%	94%	79%	72%	60%	81%	94%	88%	47%	82%	91%
98% in 18 months	100%	100%	100%	100%	79%	78%	65%	100%	99%	98%	61%	97%	99%
100% in 36 months	100%	100%	100%	100%	81%	78%	70%	100%	100%	100%	86%	100%	100%
<b>Adoption - MRJC</b>													
90% in 8 months	82%	100%	100%	100%	100%	100%	100%	80%	100%	100%	100%	50%	100%
98% in 10 months	82%	100%	100%	100%	100%	100%	100%	80%	100%	100%	100%	50%	100%
100% in 14 months	82%	100%	100%	100%	100%	100%	100%	100%	100%	100%	100%	50%	100%
<b>Parentage - MRJC</b>													
90% in 8 months	46%	29%	31%	38%	44%	46%	55%	60%	69%	22%	8%	62%	40%
98% in 10 months	77%	72%	44%	69%	56%	54%	64%	80%	85%	56%	25%	77%	40%
100% in 14 months	92%	93%	81%	88%	63%	92%	73%	80%	100%	56%	75%	85%	67%

Age of resolved cases – the time between filing and resolution, minus any suspense time if applicable.

Court adopted time guideline (based on suggestion from BJA State Advisory Committee, see LCR 4 official comment): (a) Civil - 90% by 360 days (12 months), 98% by 540 days (18 months); (b) Domestic - 90% by 240 days (8 months), 98% by 300 days (10 months); (c) Probate/Guardianship - 90% by 240 days (8 months), 98% by 540 days (18 months); (d) Adoption/Parentage - 90% by 240 days (8 months); 98% by 300 days (10 months).

“Civil” includes all civil actions (including RAL), except “Matters Filed with Clerk” (Petition for Order Granting Judgment on Confession of Judgment, Tax Warrants, Abstract of Judgment, Foreign Judgment, and Transcript of Judgment), Domestic, Probate, Guardianship, Adoption, and Parentage cases.

Table 4. Pending Caseload at the End of the Month

SEA	Jan	Feb	Mar	Apr	May	Jun	Jul	Aug	Sep	Oct	Nov	Dec
<b>TOTAL - SEA</b>												
2024	9696	9827	9825	9994	10197	10285	10139	10492	10554	10590	10314	10481
2025	10435	10915	11043	11057	11131	11209	11399	11506	11617	11696	11802	11828
2026	11919	11887	11711	12281								
<b>Civil - SEA</b>												
2024	5234	5306	5300	5457	5663	5745	5645	5865	5916	5942	5750	5875
2025	5831	6210	6293	6214	6270	6335	6467	6538	6665	6774	6869	6955
2026	6934	6929	6809	7258								
<b>Domestic - SEA</b>												
2024	2739	2751	2762	2785	2785	2794	2762	2844	2832	2794	2734	2719
2025	2690	2732	2780	2830	2863	2842	2877	2896	2900	2931	2918	2878
2026	2956	2944	2860	2933								
<b>Probate - SEA</b>												
2024	1166	1205	1188	1191	1190	1196	1195	1226	1260	1296	1282	1302
2025	1317	1371	1365	1404	1387	1415	1417	1450	1479	1474	1236	1229
2026	1249	1272	1311	1326								
<b>Guardianship - SEA</b>												
2024	306	305	314	301	303	302	295	302	301	317	316	345
2025	354	350	349	351	353	353	368	354	310	265	524	526
2026	543	513	489	511								
<b>Adoption - SEA</b>												
2024	155	164	165	157	155	152	154	154	148	148	139	142
2025	155	167	166	167	164	164	173	167	172	166	167	159
2026	157	160	164	175								
<b>Parentage - SEA</b>												
2024	96	96	96	103	101	96	88	101	97	93	93	98
2025	88	85	90	91	94	100	97	101	91	86	88	81
2026	80	69	78	78								
<b>MRJC</b>												
<b>TOTAL - MRJC</b>												
2024	5678	5809	5947	6143	6301	6268	6372	6558	6541	6504	6359	6457
2025	6335	6540	6584	6452	6364	6461	6486	6461	6453	6443	6528	6600
2026	6635	6638	6586	6762								
<b>Civil - MRJC</b>												
2024	2947	3069	3131	3228	3418	3417	3478	3586	3548	3504	3403	3485
2025	3314	3458	3442	3278	3229	3350	3438	3453	3440	3500	3558	3676
2026	3659	3659	3614	3735								
<b>Domestic - MRJC</b>												
2024	1776	1768	1802	1911	1891	1870	1888	1920	1950	1957	1921	1930
2025	1944	1983	2030	2040	2017	1963	1926	1902	1900	1833	1894	1848
2026	1863	1882	1848	1912								
<b>Probate - MRJC</b>												
2024	492	505	523	532	518	503	530	539	539	551	553	561
2025	589	601	600	619	592	616	604	598	630	621	408	399
2026	415	415	423	422								
<b>Guardianship - MRJC</b>												
2024	232	247	259	245	233	235	249	272	274	273	264	269
2025	273	280	295	297	306	316	303	294	270	222	447	451
2026	465	451	462	452								
<b>Adoption - MRJC</b>												
2024	78	74	73	70	75	77	76	78	75	76	75	69
2025	73	74	73	71	71	71	75	71	68	70	67	66
2026	70	70	75	77								
<b>Parentage - MRJC</b>												
2024	153	146	159	157	166	166	151	163	155	143	143	143
2025	142	144	144	147	149	145	140	143	145	147	154	160
2026	163	161	164	164								
<b>SEA/MRJC</b>												
2024	15374	15636	15772	16137	16498	16553	16511	17050	17095	17094	16673	16938
2025	16770	17455	17627	17509	17495	17670	17885	17967	18070	18139	18330	18428
2026	18554	18525	18297									

Pending caseload = cases remain active and unresolved at the end of reporting period, excluding cases on suspense status (in arbitration, appeal).

Table 5. Age of Pending Cases

SEA	Apr 2025	May 2025	Jun 2025	Jul 2025	Aug 2025	Sep 2025	Oct 2025	Nov 2025	Dec 2025	Jan 2026	Feb 2026	Mar 2026	Apr 2026
<b>Civil - SEA</b>													
Median Age (50 <sup>th</sup> percentile) *	118	121	127	133	139	138	138	144	146	146	149	146	141
<b># of Cases in Age Interval</b>													
0 - 120 days (0 - 4 months)	3142	3115	3075	3017	2980	3049	3062	2990	3088	2997	2981	3031	3294
121 - 240 days (5 - 8 months)	1405	1458	1480	1690	1737	1738	1765	1748	1752	1732	1677	1561	1655
241 - 360 days (9 - 12 months)	872	871	934	927	926	991	1027	1161	1149	1158	1160	1076	1108
361 - 540 days (13 - 18 months)	475	511	533	511	547	564	601	648	648	714	754	760	765
541 - 720 days (19 - 24 months)	179	168	170	184	207	183	187	195	194	203	223	224	279
> 720 days (> 24 months)	141	147	143	138	141	140	132	127	124	130	134	157	157
<b>Domestic - SEA</b>													
Median Age (50 <sup>th</sup> percentile) *	146	139	145	147	147	146	142	144	150	150	156	156	150
<b># of Cases in Age Interval</b>													
0 - 120 days (0 - 4 months)	1268	1292	1281	1268	1240	1285	1320	1281	1225	1221	1193	1211	1269
121 - 240 days (5 - 8 months)	658	656	628	683	729	722	708	707	715	779	790	709	705
241 - 360 days (9 - 12 months)	428	434	422	411	393	368	382	418	427	433	436	446	441
361 - 540 days (13 - 18 months)	258	263	303	299	309	293	278	254	240	256	256	242	263
> 540 days (> 18 months)	218	218	208	216	225	232	243	258	271	267	269	252	255
<b>Probate - SEA</b>													
Median Age (50 <sup>th</sup> percentile) *	722	759	757	787	791	786	819	898	931	948	950	965	976
<b># of Cases in Age Interval</b>													
0 - 120 days (0 - 4 months)	266	252	273	257	256	277	252	161	143	147	167	193	194
121 - 240 days (5 - 8 months)	111	103	92	102	112	121	127	93	87	75	64	58	62
241 - 360 days (9 - 12 months)	89	86	90	86	84	78	68	68	74	91	93	83	78
361 - 540 days (13 - 18 months)	113	102	115	109	111	111	116	98	93	88	89	94	91
> 540 days (> 18 months)	825	844	845	863	887	892	911	816	832	848	859	883	901
<b>Guardianship - SEA</b>													
Median Age (50 <sup>th</sup> percentile) *	574	522	552	486	357	351	278	299	294	284	258	273	252
<b># of Cases in Age Interval</b>													
0 - 120 days (0 - 4 months)	110	106	102	118	131	109	106	199	200	202	199	188	200
121 - 240 days (5 - 8 months)	33	36	34	30	21	20	21	55	51	61	54	46	49
241 - 360 days (9 - 12 months)	18	20	25	22	25	27	24	27	24	23	23	24	26
361 - 540 days (13 - 18 months)	13	15	13	16	23	26	24	38	45	41	34	31	29
> 540 days (> 18 months)	177	176	179	182	154	128	90	205	206	216	203	200	207
<b>Adoption - SEA</b>													
Median Age (50 <sup>th</sup> percentile) *	778	824	854	781	901	868	966	992	1140	1380	1173	1128	938
<b># of Cases in Age Interval</b>													
0 - 120 days (0 - 4 months)	48	44	35	41	34	36	27	27	24	20	23	32	42
121 - 240 days (5 - 8 months)	12	10	19	21	22	23	18	17	11	12	10	8	10
241 - 360 days (9 - 12 months)	6	7	6	4	4	5	14	16	18	17	9	7	5
361 - 540 days (13 - 18 months)	8	10	11	13	7	7	6	5	5	4	14	12	14
> 540 days (> 18 months)	93	93	93	94	100	101	101	102	101	104	104	105	104
<b>Parentage - SEA</b>													
Median Age (50 <sup>th</sup> percentile) *	199	173	146	140	138	141	143	161	175	219	170	176	181
<b># of Cases in Age Interval</b>													
0 - 120 days (0 - 4 months)	31	38	48	47	48	41	38	35	29	33	25	25	31
121 - 240 days (5 - 8 months)	23	16	12	11	14	18	24	28	25	21	20	22	19
241 - 360 days (9 - 12 months)	23	22	19	18	14	13	6	6	7	13	13	19	16
361 - 540 days (13 - 18 months)	7	10	12	11	14	10	11	10	10	6	4	4	1
> 540 days (> 18 months)	7	8	9	10	11	9	7	9	10	7	7	8	11

\*Age of active pending cases is time elapsed from filing date to the end of the reporting period, minus any suspense time (in appeal, stay, mediation, arbitration) if applicable. The "median age" indicates the age of half (50%) of the pending cases (half are more, half are less) than the number of days indicated in the table.

"Civil" includes all civil actions (including RALJ), except "Matters Filed with Clerk" (Petition for Order Granting Judgment on Confession of Judgment, Tax Warrants, Abstract of Judgment, Foreign Judgment, and Transcript of Judgment), Domestic, Probate, Guardianship, Adoption, and Paternity cases.

Table 5. Age of Pending Cases (cont.)

MRJC	Apr 2025	May 2025	Jun 2025	Jul 2025	Aug 2025	Sep 2025	Oct 2025	Nov 2025	Dec 2025	Jan 2026	Feb 2026	Mar 2026	Apr 2026
<b>Civil - MRJC</b>													
Median Age (50 <sup>th</sup> percentile) *	114	111	117	122	129	132	131	137	133	136	137	135	140
<b># of Cases in Age Interval</b>													
0 - 120 days (0 - 4 months)	1702	1673	1727	1696	1653	1628	1639	1627	1733	1707	1662	1717	1736
121 - 240 days (5 - 8 months)	753	719	713	803	825	864	879	863	882	849	860	775	799
241 - 360 days (9 - 12 months)	466	443	487	479	485	486	495	558	569	571	576	517	557
361 - 540 days (13 - 18 months)	265	310	330	340	344	320	322	325	332	368	383	401	400
541 - 720 days (19 - 24 months)	51	46	57	77	101	102	126	144	120	119	131	148	176
> 720 days (> 24 months)	41	38	36	43	45	40	39	41	40	45	47	56	67
<b>Domestic- MRJC</b>													
Median Age (50 <sup>th</sup> percentile) *	164	149	148	156	161	166	165	168	168	173	170	156	157
<b># of Cases in Age Interval</b>													
0 - 120 days (0 - 4 months)	870	879	839	769	743	751	753	751	723	709	737	772	830
121 - 240 days (5 - 8 months)	438	408	410	483	501	503	477	455	440	443	446	423	424
241 - 360 days (9 - 12 months)	315	311	300	260	238	230	253	292	314	325	311	270	265
361 - 540 days (13 - 18 months)	180	177	178	172	181	175	161	153	133	139	146	153	169
> 540 days (> 18 months)	237	242	236	242	239	241	239	243	238	247	242	230	224
<b>Probate – MRJC</b>													
Median Age (50 <sup>th</sup> percentile) *	580	669	634	676	720	678	745	933	987	975	999	996	1028
<b># of Cases in Age Interval</b>													
0 - 120 days (0 - 4 months)	155	124	143	124	123	149	128	69	60	72	72	73	71
121 - 240 days (5 - 8 months)	67	65	56	58	44	41	49	21	21	23	20	25	24
241 - 360 days (9 - 12 months)	34	40	52	46	46	47	37	23	16	14	18	15	17
361 - 540 days (13 - 18 months)	44	42	42	44	46	45	52	37	42	38	34	31	23
> 540 days (> 18 months)	319	321	323	332	339	348	355	258	260	268	271	279	287
<b>Guardianship - MRJC</b>													
Median Age (50 <sup>th</sup> percentile) *	276	294	290	331	326	322	293	336	350	296	185	184	208
<b># of Cases in Age Interval</b>													
0 - 120 days (0 - 4 months)	105	114	125	112	108	96	86	160	162	168	186	198	190
121 - 240 days (5 - 8 months)	31	26	26	25	23	26	21	44	40	53	55	54	46
241 - 360 days (9 - 12 months)	27	27	22	21	22	18	16	27	26	24	30	21	21
361 - 540 days (13 - 18 months)	19	23	27	27	30	28	27	43	46	39	25	24	28
> 540 days (> 18 months)	115	116	116	118	111	102	72	173	177	181	155	165	167
<b>Adoption – MRJC</b>													
Median Age (50 <sup>th</sup> percentile) *	1653	1684	1714	1576	1776	2039	1950	2106	2143	2042	2070	1819	1772
<b># of Cases in Age Interval</b>													
0 - 120 days (0 - 4 months)	12	12	11	15	8	5	8	7	6	9	6	12	13
121 - 240 days (5 - 8 months)	2	2	1	1	4	4	3	2	0	1	4	4	5
241 - 360 days (9 - 12 months)	3	2	2	2	2	2	0	0	2	2	2	2	0
361 - 540 days (13 - 18 months)	1	2	4	4	4	3	5	3	1	1	1	1	2
> 540 days (> 18 months)	53	53	53	53	53	54	54	55	57	57	57	56	57
<b>Parentage – MRJC</b>													
Median Age (50 <sup>th</sup> percentile) *	185	170	159	155	150	160	170	171	147	160	163	180	184
<b># of Cases in Age Interval</b>													
0 - 120 days (0 - 4 months)	55	56	57	56	56	55	55	62	66	58	60	55	46
121 - 240 days (5 - 8 months)	36	38	35	35	43	46	47	42	41	50	52	58	58
241 - 360 days (9 - 12 months)	32	26	27	25	17	18	17	21	26	28	24	24	32
361 - 540 days (13 - 18 months)	14	18	15	14	19	14	18	18	16	18	11	13	13
> 540 days (> 18 months)	10	11	11	10	8	12	10	11	11	9	14	14	15

\*Age of active pending cases is time elapsed from filing date to the end of the reporting period, minus any suspense time (in appeal, stay, mediation, arbitration) if applicable. The “median age” indicates the age of half (50%) of the pending cases (half are more, half are less) than the number of days indicated in the table.

“Civil” includes all civil actions (including RALJ), except “Matters Filed with Clerk” (Petition for Order Granting Judgment on Confession of Judgment, Tax Warrants, Abstract of Judgment, Foreign Judgment, and Transcript of Judgment), Domestic, Probate, Guardianship, Adoption, and Parentage cases.

Table 6. SEA/MRJC Filings, Resolutions, and Pending Caseload as a Percentage of All Cases

	Apr 2025	May 2025	Jun 2025	Jul 2025	Aug 2025	Sep 2025	Oct 2025	Nov 2025	Dec 2025	Jan 2026	Feb 2026	Mar 2026	Apr 2026
<b>Total Filings</b>	<b>3946</b>	<b>3862</b>	<b>3557</b>	<b>3813</b>	<b>3517</b>	<b>3637</b>	<b>3739</b>	<b>3098</b>	<b>3742</b>	<b>3619</b>	<b>3457</b>	<b>4227</b>	<b>3954</b>
SEA - # of Cases Filed	2478	2453	2202	2434	2242	2304	2383	2001	2322	2269	2142	2665	2598
MRJC - # of Cases Filed	1468	1409	1355	1379	1275	1333	1356	1097	1420	1350	1315	1562	1356
SEA %	63%	64%	62%	64%	64%	63%	64%	65%	62%	63%	62%	63%	66%
MRJC %	37%	36%	38%	36%	36%	37%	36%	35%	38%	37%	38%	37%	34%
<b>Total Resolutions</b>	<b>3905</b>	<b>3792</b>	<b>3335</b>	<b>3506</b>	<b>3356</b>	<b>3455</b>	<b>3637</b>	<b>2900</b>	<b>3569</b>	<b>3364</b>	<b>3391</b>	<b>3786</b>	<b>3742</b>
SEA - # of Cases Resolved	2382	2329	2096	2197	2106	2150	2292	1892	2260	2106	2121	2428	2382
MRJC - # of Cases Resolved	1523	1463	1239	1309	1250	1305	1345	1008	1309	1258	1270	1358	1360
SEA %	61%	61%	63%	63%	63%	62%	63%	65%	63%	63%	63%	64%	64%
MRJC %	39%	39%	37%	37%	37%	38%	37%	35%	37%	37%	37%	36%	36%
<b>Total Pending Cases</b>	<b>17509</b>	<b>17495</b>	<b>17670</b>	<b>17885</b>	<b>17967</b>	<b>18070</b>	<b>18139</b>	<b>18330</b>	<b>18428</b>	<b>18554</b>	<b>18525</b>	<b>18297</b>	<b>19043</b>
SEA - # of Cases Pending	11057	11131	11209	11399	11506	11617	11696	11802	11828	11919	11887	11711	12281
MRJC - # of Cases Pending	6452	6364	6461	6486	6461	6453	6443	6528	6600	6635	6638	6586	6762
SEA %	63%	64%	63%	64%	64%	64%	64%	64%	64%	64%	64%	64%	64%
MRJC %	37%	36%	37%	36%	36%	36%	36%	36%	36%	36%	36%	36%	36%

All civil actions (including RALJ), except "Matters Filed with Clerk" (Petition for Order Granting Judgment on Confession of Judgment, Tax Warrants, Abstract of Judgment, Foreign Judgment, and Transcript of Judgment), Domestic, Probate, Guardianship, Adoption, and Parentage cases.

## Appendix Glossary and Definition

### **Active Status**

A case is active if it is not on suspense status (see Suspense Status).

### **Adoption and Parentage Cases (case type 5)**

ADP - Adoption  
CFI - Confidential Intermediary  
CHN - Confidential Change of Name  
DIP - Disestablishment of Parentage  
MDS - Modification/Support Only  
MOD - Modification  
MSC - Miscellaneous  
OAA - Open Adoption Agreement  
PAD - De Facto Parentage  
PAG - Pre Birth Establish Parentage Genetic  
PAS - Establish Parentage Gestational Surrogacy  
PAT - Parentage  
PPR - Initial Pre Placement Report  
PRC - Parentage Rescission/Challenge  
PUR - Parentage (URESA/UIFSA)  
REL - Relinquishment  
ROB - Relocation Objection  
TER - Termination of Parental Rights

### **Case**

A case is defined as a filing with an assigned case number.

### **Civil Cases (case type 2, no RALI)**

ALR - Administrative Law Review  
ALRLI - L&I Administrative Law Review  
AOD - Assurance of Discontinuance  
ASB - Asbestos  
ASP - Asbestos Personal Injury  
ASW - Asbestos Wrongful Death  
BAT - Petition to Appeal/Amend Ballot Title  
CAA - Motion to Confirm/Compel Arbitration Award  
CFJ - Petition for Order Granting Judgment on Confession of Judgment  
CHN - Non Confidential Change of Name  
COL - Collection  
COM - Commercial  
CON - Condemnation  
CRP - Certificate of Restoration of Opportunity  
CRR - Petition for Certificate of Rehabilitation  
DOL - Appeal Licensing Revocation  
DSF - Notice of Deposit of Surplus Funds from Trustee's Sale of Real Property  
DVP - Domestic Violence  
ECP - Enforcement of Canadian Protection Order  
EOM - Emancipation of Minor  
FOR - Foreclosure  
FPO - Foreign Protection Order  
FVL - Motion to Show Cause /Fruivolous Lien  
HAR - Unlawful Harassment  
HSI - Application for Health & Safety Inspection  
INJ - Injunction  
IPL - Complaint for Interpleader  
LUP - Land Use Petition  
MAL - Other Malpractice  
MED - Medical Malpractice  
MER - Meretricious Relationships  
MHA - Malicious Harassment  
MSC - Miscellaneous  
MST - Minor Settlement  
MWP - Minor Work Permit  
NJF - Non Judicial Filing  
OSS - Petition to Issue Out of State Subpoena  
PBC - Petition for Birth Certificate Change  
PBJ - Petition for Justification /Bail Bond Company  
PCC - Petition for Civil Commitment

PFA - Property Fairness Act  
PIN - Personal Injury  
PPT - Petition for Perpetuation of Testimony  
PRA - Public Records Act  
PRG - Property Damage /Gangs  
PRP - Property Damage  
PVO - Petition for Vehicle Ownership  
QTI - Quiet Title  
RCV - Petition to Appoint Receiver  
RDR - Relief from Duty to Register  
RFR - Restoration of Firearms Rights  
RRC - Remove Restricted Covenant  
SCA - Small Claims Appeal  
SDR - School District /Required Action Plan  
SER - Subdivision Election Process Law Review  
SPC - Seizure of Property From Commission of a Crime  
SPR - Seizure of Property Resulting From a Crime  
STK - Stalking Protection  
SXP - Sexual Assault Protection  
TMV - Tort /Motor Vehicle  
TSS - Petition for Approval of Transfer of Structured Settlement  
TTO - Tort /Other  
UND - Unlawful Detainer  
VAP - Vulnerable Adult Protection Order  
VEP - Voter Election Process Law Review  
VVT - Victims of Motor Vehicle Theft /Civil Action  
WDE - Wrongful Death  
WHC - Writ of Habeas Corpus  
WMW - Miscellaneous Writs  
WRM - Writ of Mandamus  
WRR - Writ of Restitution  
WRV - Writ of Review  
XRP - Extreme Risk Protection Order

### **Completion**

A case is completed if dispositive document is filed with the court following resolution.

### **Domestic Cases (case type 3)**

CIR - Committed Intimate Relationship  
CUS - Child Custody  
DIC - Dissolution w/ Children  
DIN - Dissolution no Children  
DIS - Dissolution  
DPC - Dissolution of Domestic Partnership w/ Children  
DPN - Dissolution of Domestic Partnership /No Children  
FUJ - Out of State Support Registration /Foreign Judgment  
INC - Annulment /Inv of Marriage w/ Children  
IND - Annulment /Inv of Domestic Partnership w/ Children  
INP - Invalidity, Domestic Partnership  
INV - Annulment /Invalidity  
MDS - Modification/Support Only  
MOD - Modification  
MSC - Miscellaneous  
MWA - Mandatory Wage Assignment  
OSC - Out of State Custody  
PPS - Parenting Plan / Child Support  
PSO - Petition for Entry of KC Support Order  
RCV - Relative Child Visitation  
RIC - Reciprocal, Resp in County  
ROB - Relocation /Objection  
ROC - Reciprocal, Resp out of County  
RVC - Relative Child Visits  
SDC - Legal Separation, Domestic Partnership w/ Children  
SEC - Legal Separation w/ Children  
SEP - Legal Separation  
SPD - Legal Separation, Domestic Partnership /No Children  
TSS - Structured Settlement

EFC - Extended Foster Care, Dependency  
GFC - Guardianship Foster Children  
RPR - Reinstatement of Parental Rights  
RVS - Relative Visitation  
TRU - Truancy  
VYG - Vulnerable Youth Guardianship

#### ***Probate and Guardianship Cases (case type 4)***

ABS - Absentee  
AOS - Affidavit of Successor  
ASE - Affidavit of Small Estate  
DSC - Disclaimer  
EST - Estate  
FNW - Foreign Will  
G/E - Guardianship/Estate  
GDE - Guardianship of the Estate  
GDN - Guardianship  
GDP - Guardianship of the Person  
LGD - Limited Guardianship  
LGE - Limited Guardianship of the Estate  
LGP - Limited Guardianship of the Person  
MGD - Minor Guardianship  
MSC - Miscellaneous  
MST - Minor Settlement  
NJB - Non Judicial Binding/TEDRA Agreement  
NNC - Non Probate Notice to Creditor  
POA - Petition for Relief (RCW 11.94) /Power of Attorney  
RGR - Registration of Guardianship  
RTR - Registration of Trust /Trust Situs  
SNT - Special Needs Trust  
TDR - Trust/Estate Dispute Resolution  
TRS - Trust  
WLL - Will Only

#### ***Resolution***

A case is resolved if all issues in the complaint are fully adjudicated.

#### ***Suspended Case***

A case is placed in suspense status from active status during the reporting period.

#### ***Suspense Status***

A case is on suspense status if it is on warrant, appeal, stay, mediation, arbitration ("Deferred Prosecution" is not a suspense status, but is treated as a resolution).