



King County

Department of Judicial Administration

Catherine Cornwall

Director and Superior Court Clerk

(206) 296-9300 (206) 296-0100 TTY/TDD

King County Superior Court

Civil Department Statistical Report

March 2026

Department of Judicial Administration

Prepared by: Shiquan Liao, Ph.D., Statistician

April 15, 2026

Report #: CIVIL-2026-03

Seattle Courthouse
516 Third Avenue Room E609
Seattle, WA 98104-2386

Maleng Regional Justice Center
401 Fourth Avenue North Room 2C
Kent, WA 98032-4429

*Clark Children and Family
Justice Center*
1211 East Alder Room 3015
Seattle, WA 98122-5598

Civil Statistics Summary

The civil statistics report provides an overview of the caseload for the Civil and UFC Departments. The report includes the number of filings, number of resolutions, number of pending cases, age of resolved cases, and age of pending cases for both the SEA and MRJC locations.

The following categories are included in this report: **Civil, Domestic, Probate, Guardianship, Adoption, and Parentage**. This report includes all cases in these categories, regardless of whether a judge is assigned at filing or not.

Please note that the category of “civil” in the tables of this report is more narrowly defined. Readers are encouraged to check the Appendix at the end of this report for precise definition of the terminology used in this report.

- **Filings (Table 1, Figures 1)**

In March 2026, the total number of filings was 4,227 cases. Of those cases filed in the month, 37% were MRJC cases, and the remaining 63% were SEA cases. In 2026, the court received an average of 3,768 cases in the reporting categories per month. In comparison, the average monthly filings in 2019, 2020, 2021, 2022, 2023, 2024, and 2025 were 3,083, 2,436, 2,429, 2,601, 2,953, 3,398, and 3,705 cases, respectively.

- **Resolutions (Table 2, Figures 2)**

The total resolutions in March 2026 were 3,786 cases. Of those cases resolved in the month, 36% of the resolutions were MRJC cases. In 2026, on average the court resolved 3,514 cases in the reporting categories per month. In comparison, the average monthly resolutions in 2019, 2020, 2021, 2022, 2023, 2024, and 2025 were 3,091, 2,378, 2,450, 2,592, 2,756, 3,240, and 3,530 cases, respectively.

- **The Age of Resolved Cases (Table 3)**

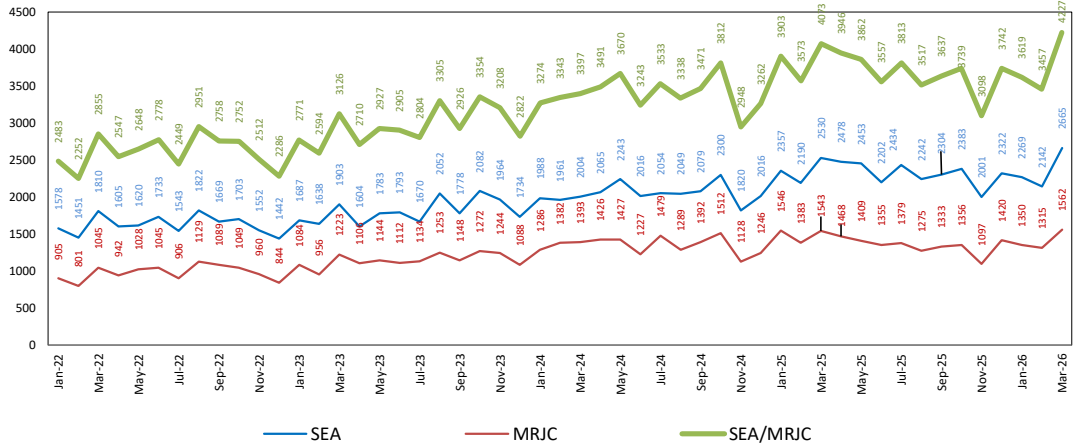
Table 3 shows the comparison between the court-adopted timeline standard (as suggested by the State Advisory Committee) with the actual age of resolved cases (time from filing to resolution).

- **Pending Caseload (Table 4, Figures 3) and Age of Pending Cases (Table 5)**

At the end of March 2026, the pending caseload for the civil department was 18,297 cases, 64% being SEA cases and 36% being MRJC cases. The age breakdown of pending cases is presented in Table 5. SEA had 157 civil cases over 24 months and 252 domestic cases over 18 months. MRJC had 56 general civil cases over 24 months and 230 domestic cases over 18 months. In addition, the court has a large number of probate, guardianship, and adoption cases over 18 months without resolution at both locations.

Conclusions: In 2026, the monthly average filings in the reporting categories were 3,786 cases. In the same month, the court resolved 3,514 cases per month. At the end of March 2026, the total pending caseload in the reporting categories was 18,297 cases. In comparison, the pending caseload in the same reporting categories was 15,059, 14,371, 14,085, 12,941, 13,471, 15,082, and 16,938, and 18,428 at the year end of 2018, 2019, 2020, 2021, 2022, 2023, 2024, and 2025, respectively.

Figure 1. Monthly Filings for SEA, MRJC and SEA/MRJC Combined



3378%

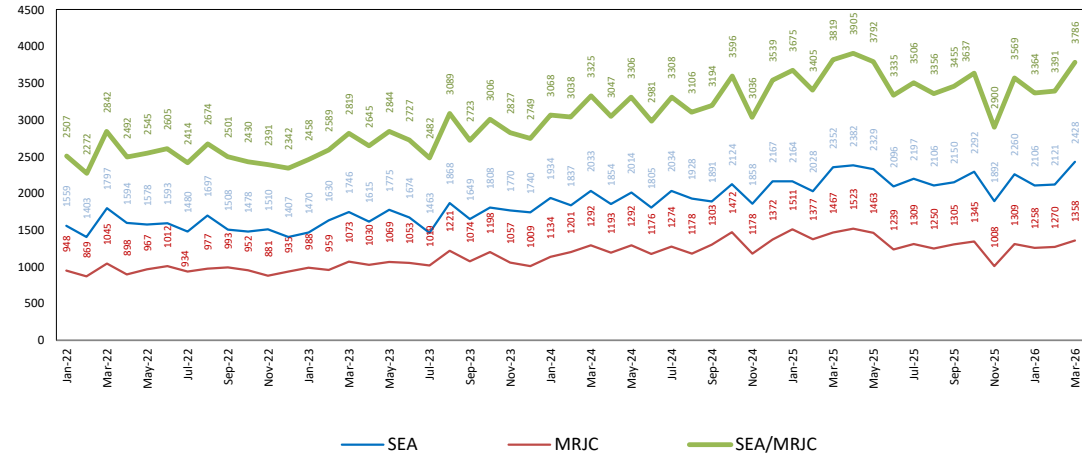


Figure 3. Monthly Pending Caseload for SEA, MRJC and SEA/MRJC Combined

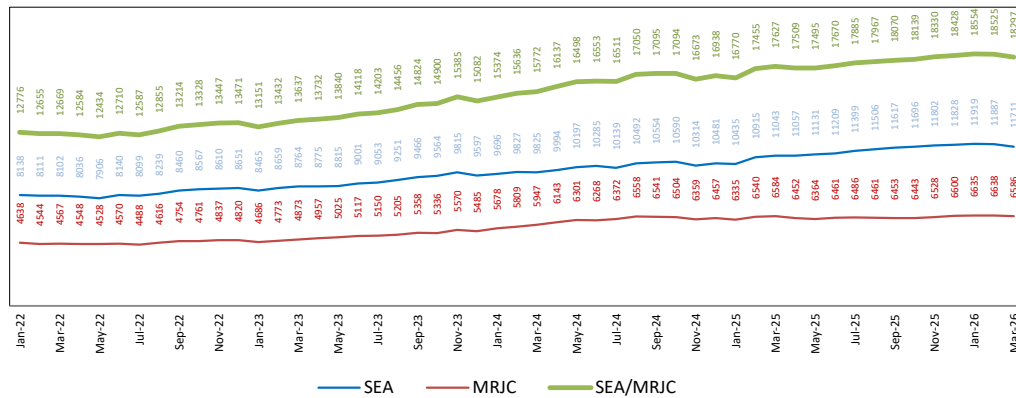


Table 1. Monthly New Filings

SEA	Jan	Feb	Mar	Apr	May	Jun	Jul	Aug	Sep	Oct	Nov	Dec
TOTAL - SEA												
2024	1988	1961	2004	2065	2243	2016	2054	2049	2079	2300	1820	2016
2025	2357	2190	2530	2478	2453	2202	2434	2242	2304	2383	2001	2322
2026	2269	2142	2665									
Civil - SEA												
2024	1053	1068	1057	1181	1284	1228	1186	1187	1244	1391	1114	1232
2025	1473	1370	1587	1524	1544	1373	1496	1364	1415	1500	1227	1503
2026	1356	1341	1668									
Domestic - SEA												
2024	335	326	355	369	368	335	339	360	367	346	274	280
2025	339	298	360	351	370	314	361	354	391	360	296	312
2026	385	308	336									
Probate - SEA												
2024	524	479	497	444	500	380	458	427	401	475	369	409
2025	463	445	496	506	456	419	480	445	435	447	369	409
2026	423	397	539									
Guardianship - SEA												
2024	46	46	56	40	51	43	37	41	39	57	38	67
2025	54	40	50	49	45	56	66	56	38	45	75	78
2026	84	64	85									
Adoption - SEA												
2024	16	27	25	12	20	13	24	14	16	17	17	14
2025	23	33	20	32	21	19	15	9	15	11	22	13
2026	9	20	26									
Parentage - SEA												
2024	14	15	14	19	20	17	10	20	12	14	8	14
2025	5	4	17	16	17	21	16	14	10	20	12	7
2026	12	12	11									

MRJC	Jan	Feb	Mar	Apr	May	Jun	Jul	Aug	Sep	Oct	Nov	Dec
TOTAL - MRJC												
2024	1286	1382	1393	1426	1427	1227	1479	1289	1392	1512	1128	1246
2025	1546	1383	1543	1468	1409	1355	1379	1275	1333	1356	1097	1420
2026	1350	1315	1562									
Civil - MRJC												
2024	826	908	877	901	947	817	991	814	929	1024	797	862
2025	1066	945	1022	950	947	923	934	841	881	902	717	1024
2026	901	846	1052									
Domestic - MRJC												
2024	205	172	229	248	206	187	237	203	224	230	161	182
2025	215	198	250	242	219	177	212	184	221	197	183	175
2026	206	204	226									
Probate - MRJC												
2024	203	243	214	230	198	176	185	188	190	197	127	156
2025	198	190	207	202	171	193	173	183	173	204	128	132
2026	161	186	182									
Guardianship - MRJC												
2024	42	47	47	30	39	30	49	49	35	41	27	31
2025	38	34	45	47	48	47	41	44	40	35	50	66
2026	65	67	79									
Adoption - MRJC												
2024	2	2	7	3	7	6	4	8	3	6	6	6
2025	12	6	5	9	7	3	7	4	3	5	2	1
2026	5	2	8									
Parentage - MRJC												
2024	8	10	19	14	30	12	13	27	11	14	10	9
2025	17	10	14	18	17	12	12	19	15	13	17	22
2026	12	10	15									

“Civil” includes all civil actions (including RALJ), except “Matters Filed with Clerk” (Petition for Order Granting Judgment on Confession of Judgment, Tax Warrants, Abstract of Judgment, Foreign Judgment, and Transcript of Judgment), Domestic, Probate, Guardianship, Adoption, and Paternity cases.

Table 2. Monthly Resolutions

SEA	Jan	Feb	Mar	Apr	May	Jun	Jul	Aug	Sep	Oct	Nov	Dec
TOTAL - SEA												
2024	1934	1837	2033	1854	2014	1805	2034	1928	1891	2124	1858	2167
2025	2164	2028	2352	2382	2329	2096	2197	2106	2150	2292	1892	2260
2026	2106	2121	2428									
Civil - SEA												
2024	1101	1019	1106	984	1074	1077	1146	1125	1116	1267	1094	1359
2025	1309	1217	1473	1508	1458	1288	1321	1266	1269	1393	1136	1384
2026	1314	1311	1456									
Domestic - SEA												
2024	305	309	336	372	347	290	355	327	338	355	320	354
2025	342	329	312	306	330	330	324	332	378	328	306	354
2026	299	305	339									
Probate - SEA												
2024	464	430	510	417	498	371	454	405	370	435	375	391
2025	445	404	491	473	463	388	477	413	397	452	354	414
2026	403	374	510									
Guardianship - SEA												
2024	42	49	48	44	49	41	42	36	38	37	39	39
2025	43	49	45	48	40	56	51	70	79	79	63	74
2026	68	93	98									
Adoption - SEA												
2024	15	14	20	24	24	11	19	22	17	15	24	15
2025	12	22	20	31	24	19	6	15	10	17	21	21
2026	11	16	16									
Parentage - SEA												
2024	7	16	13	13	22	15	18	13	12	15	6	9
2025	13	7	11	16	14	15	18	10	17	23	12	13
2026	11	22	9									

MRJC	Jan	Feb	Mar	Apr	May	Jun	Jul	Aug	Sep	Oct	Nov	Dec
TOTAL - MRJC												
2024	1134	1201	1292	1193	1292	1176	1274	1178	1303	1472	1178	1372
2025	1511	1377	1467	1523	1463	1239	1309	1250	1305	1345	1008	1309
2026	1258	1270	1358									
Civil - MRJC												
2024	718	726	871	746	812	753	867	755	881	1005	842	944
2025	1105	953	1008	1043	967	791	807	785	868	827	659	870
2026	867	816	882									
Domestic - MRJC												
2024	186	198	179	176	198	188	208	177	187	210	171	210
2025	190	185	208	225	243	227	247	204	214	220	169	221
2026	190	176	217									
Probate - MRJC												
2024	177	229	192	208	214	188	154	181	187	183	119	154
2025	165	188	202	188	194	167	184	184	139	212	117	139
2026	143	185	178									
Guardianship - MRJC												
2024	35	29	35	42	46	30	27	34	30	41	28	40
2025	31	30	30	43	38	35	52	53	64	73	48	63
2026	48	79	66									
Adoption - MRJC												
2024	3	4	7	7	2	3	3	7	3	9	5	14
2025	8	6	6	11	7	3	3	8	7	6	5	3
2026	1	2	2									
Parentage - MRJC												
2024	15	15	8	14	19	14	15	24	15	24	13	10
2025	12	15	13	13	14	16	16	16	13	14	10	13
2026	9	12	13									

"Civil" includes all civil actions (including RAL), except "Matters Filed with Clerk" (Petition for Order Granting Judgment on Confession of Judgment, Tax Warrants, Abstract of Judgment, Foreign Judgment, and Transcript of Judgment), Domestic, Probate, Guardianship, Adoption, and Parentage cases.

Table 3. Percentage of Cases Resolved in Specified Time Intervals

SEA	Mar 2025	Apr 2025	May 2025	Jun 2025	Jul 2025	Aug 2025	Sep 2025	Oct 2025	Nov 2025	Dec 2025	Jan 2026	Feb 2026	Mar 2026
Civil - SEA													
90% in 12 months	88%	90%	92%	91%	91%	93%	89%	88%	91%	89%	89%	88%	87%
98% in 18 months	96%	96%	98%	97%	97%	98%	95%	96%	96%	96%	96%	96%	96%
100% in 24 months	98%	98%	99%	99%	98%	99%	99%	98%	99%	99%	98%	99%	98%
Domestic - SEA													
90% in 8 months	50%	54%	59%	65%	59%	63%	59%	58%	60%	64%	61%	64%	55%
98% in 10 months	60%	63%	69%	75%	69%	71%	67%	68%	68%	76%	68%	71%	63%
100% in 14 months	82%	84%	87%	91%	85%	89%	85%	84%	85%	88%	84%	88%	80%
Probate - SEA													
90% in 8 months	97%	99%	97%	97%	98%	99%	98%	99%	99%	100%	99%	99%	99%
98% in 18 months	98%	99%	99%	99%	100%	99%	100%	100%	100%	100%	100%	100%	99%
100% in 36 months	99%	99%	100%	100%	100%	99%	100%	100%	100%	100%	100%	100%	100%
Guardianship - SEA													
90% in 8 months	87%	96%	98%	100%	98%	59%	67%	53%	87%	92%	96%	70%	76%
98% in 18 months	93%	100%	100%	100%	100%	60%	68%	60%	99%	99%	100%	75%	85%
100% in 36 months	100%	100%	100%	100%	100%	60%	68%	62%	100%	100%	100%	80%	91%
Adoption - SEA													
90% in 8 months	100%	97%	100%	90%	100%	80%	90%	88%	100%	91%	73%	100%	75%
98% in 10 months	100%	100%	100%	100%	100%	93%	100%	88%	100%	91%	91%	100%	88%
100% in 14 months	100%	100%	100%	100%	100%	100%	100%	94%	100%	91%	100%	100%	94%
Parentage - SEA													
90% in 8 months	55%	63%	79%	67%	89%	60%	65%	65%	83%	85%	46%	73%	78%
98% in 10 months	91%	81%	79%	80%	95%	60%	65%	74%	83%	92%	46%	82%	78%
100% in 14 months	100%	81%	93%	100%	100%	90%	71%	87%	92%	100%	55%	86%	100%

MRJC	Mar 2025	Apr 2025	May 2025	Jun 2025	Jul 2025	Aug 2025	Sep 2025	Oct 2025	Nov 2025	Dec 2025	Jan 2026	Feb 2026	Mar 2026
Civil - MRJC													
90% in 12 months	87%	94%	94%	96%	94%	95%	90%	90%	91%	90%	94%	92%	91%
98% in 18 months	96%	99%	99%	99%	99%	98%	96%	97%	98%	95%	97%	97%	97%
100% in 24 months	99%	99%	99%	99%	100%	100%	99%	99%	100%	99%	99%	99%	99%
Domestic - MRJC													
90% in 8 months	51%	52%	51%	54%	60%	55%	62%	54%	54%	55%	60%	52%	50%
98% in 10 months	58%	60%	59%	64%	67%	62%	68%	61%	65%	68%	68%	59%	59%
100% in 14 months	85%	88%	88%	87%	85%	87%	84%	80%	85%	84%	90%	82%	86%
Probate - MRJC													
90% in 8 months	99%	95%	97%	98%	98%	97%	98%	98%	100%	99%	98%	98%	98%
98% in 18 months	99%	98%	99%	99%	100%	100%	100%	100%	100%	99%	99%	99%	100%
100% in 36 months	100%	100%	100%	100%	100%	100%	100%	100%	100%	100%	100%	100%	100%
Guardianship - MRJC													
90% in 8 months	93%	91%	95%	94%	94%	79%	72%	60%	81%	94%	88%	47%	82%
98% in 18 months	100%	100%	100%	100%	100%	79%	78%	65%	100%	99%	98%	61%	97%
100% in 36 months	100%	100%	100%	100%	100%	81%	78%	70%	100%	100%	100%	86%	100%
Adoption - MRJC													
90% in 8 months	100%	82%	100%	100%	100%	100%	100%	100%	80%	100%	100%	100%	50%
98% in 10 months	100%	82%	100%	100%	100%	100%	100%	100%	80%	100%	100%	100%	50%
100% in 14 months	100%	82%	100%	100%	100%	100%	100%	100%	100%	100%	100%	100%	50%
Parentage - MRJC													
90% in 8 months	39%	46%	29%	31%	38%	44%	46%	55%	60%	69%	22%	8%	62%
98% in 10 months	69%	77%	72%	44%	69%	56%	54%	64%	80%	85%	56%	25%	77%
100% in 14 months	100%	92%	93%	81%	88%	63%	92%	73%	80%	100%	56%	75%	85%

Age of resolved cases – the time between filing and resolution, minus any suspense time if applicable.

Court adopted time guideline (based on suggestion from BJA State Advisory Committee, see LCR 4 official comment): (a) Civil - 90% by 360 days (12 months), 98% by 540 days (18 months); (b) Domestic - 90% by 240 days (8 months), 98% by 300 days (10 months); (c) Probate/Guardianship - 90% by 240 days (8 months), 98% by 540 days (18 months); (d) Adoption/Parentage - 90% by 240 days (8 months); 98% by 300 days (10 months).

“Civil” includes all civil actions (including RAL), except “Matters Filed with Clerk” (Petition for Order Granting Judgment on Confession of Judgment, Tax Warrants, Abstract of Judgment, Foreign Judgment, and Transcript of Judgment), Domestic, Probate, Guardianship, Adoption, and Parentage cases.

Table 4. Pending Caseload at the End of the Month

SEA	Jan	Feb	Mar	Apr	May	Jun	Jul	Aug	Sep	Oct	Nov	Dec
TOTAL - SEA												
2024	9696	9827	9825	9994	10197	10285	10139	10492	10554	10590	10314	10481
2025	10435	10915	11043	11057	11131	11209	11399	11506	11617	11696	11802	11828
2026	11919	11887	11711									
Civil - SEA												
2024	5234	5306	5300	5457	5663	5745	5645	5865	5916	5942	5750	5875
2025	5831	6210	6293	6214	6270	6335	6467	6538	6665	6774	6869	6955
2026	6934	6929	6809									
Domestic - SEA												
2024	2739	2751	2762	2785	2785	2794	2762	2844	2832	2794	2734	2719
2025	2690	2732	2780	2830	2863	2842	2877	2896	2900	2931	2918	2878
2026	2956	2944	2860									
Probate - SEA												
2024	1166	1205	1188	1191	1190	1196	1195	1226	1260	1296	1282	1302
2025	1317	1371	1365	1404	1387	1415	1417	1450	1479	1474	1236	1229
2026	1249	1272	1311									
Guardianship - SEA												
2024	306	305	314	301	303	302	295	302	301	317	316	345
2025	354	350	349	351	353	353	368	354	310	265	524	526
2026	543	513	489									
Adoption - SEA												
2024	155	164	165	157	155	152	154	154	148	148	139	142
2025	155	167	166	167	164	164	173	167	172	166	167	159
2026	157	160	164									
Parentage - SEA												
2024	96	96	96	103	101	96	88	101	97	93	93	98
2025	88	85	90	91	94	100	97	101	91	86	88	81
2026	80	69	78									
MRJC												
TOTAL - MRJC												
2024	5678	5809	5947	6143	6301	6268	6372	6558	6541	6504	6359	6457
2025	6335	6540	6584	6452	6364	6461	6486	6461	6453	6443	6528	6600
2026	6635	6638	6586									
Civil - MRJC												
2024	2947	3069	3131	3228	3418	3417	3478	3586	3548	3504	3403	3485
2025	3314	3458	3442	3278	3229	3350	3438	3453	3440	3500	3558	3676
2026	3659	3659	3614									
Domestic - MRJC												
2024	1776	1768	1802	1911	1891	1870	1888	1920	1950	1957	1921	1930
2025	1944	1983	2030	2040	2017	1963	1926	1902	1900	1833	1894	1848
2026	1863	1882	1848									
Probate - MRJC												
2024	492	505	523	532	518	503	530	539	539	551	553	561
2025	589	601	600	619	592	616	604	598	630	621	408	399
2026	415	415	423									
Guardianship - MRJC												
2024	232	247	259	245	233	235	249	272	274	273	264	269
2025	273	280	295	297	306	316	303	294	270	222	447	451
2026	465	451	462									
Adoption - MRJC												
2024	78	74	73	70	75	77	76	78	75	76	75	69
2025	73	74	73	71	71	71	75	71	68	70	67	66
2026	70	70	75									
Parentage - MRJC												
2024	153	146	159	157	166	166	151	163	155	143	143	143
2025	142	144	144	147	149	145	140	143	145	147	154	160
2026	163	161	164									
SEA/MRJC												
2024	15374	15636	15772	16137	16498	16553	16511	17050	17095	17094	16673	16938
2025	16770	17455	17627	17509	17495	17670	17885	17967	18070	18139	18330	18428
2026	18554	18525	18297									

Pending caseload = cases remain active and unresolved at the end of reporting period, excluding cases on suspense status (in arbitration, appeal).

Table 5. Age of Pending Cases

SEA	Mar 2025	Apr 2025	May 2025	Jun 2025	Jul 2025	Aug 2025	Sep 2025	Oct 2025	Nov 2025	Dec 2025	Jan 2026	Feb 2026	Mar 2026
Civil - SEA													
Median Age (50 th percentile) *	125	118	121	127	133	139	138	138	144	146	146	149	146
# of Cases in Age Interval													
0 - 120 days (0 - 4 months)	3136	3142	3115	3075	3017	2980	3049	3062	2990	3088	2997	2981	3031
121 - 240 days (5 - 8 months)	1409	1405	1458	1480	1690	1737	1738	1765	1748	1752	1732	1677	1561
241 - 360 days (9 - 12 months)	907	872	871	934	927	926	991	1027	1161	1149	1158	1160	1076
361 - 540 days (13 - 18 months)	517	475	511	533	511	547	564	601	648	648	714	754	760
541 - 720 days (19 - 24 months)	187	179	168	170	184	207	183	187	195	194	203	223	224
> 720 days (> 24 months)	137	141	147	143	138	141	140	132	127	124	130	134	157
Domestic - SEA													
Median Age (50 th percentile) *	154	146	139	145	147	147	146	142	144	150	150	156	156
# of Cases in Age Interval													
0 - 120 days (0 - 4 months)	1196	1268	1292	1281	1268	1240	1285	1320	1281	1225	1221	1193	1211
121 - 240 days (5 - 8 months)	674	658	656	628	683	729	722	708	707	715	779	790	709
241 - 360 days (9 - 12 months)	448	428	434	422	411	393	368	382	418	427	433	436	446
361 - 540 days (13 - 18 months)	244	258	263	303	299	309	293	278	254	240	256	256	242
> 540 days (> 18 months)	218	218	218	208	216	225	232	243	258	271	267	269	252
Probate - SEA													
Median Age (50 th percentile) *	743	722	759	757	787	791	786	819	898	931	948	950	965
# of Cases in Age Interval													
0 - 120 days (0 - 4 months)	254	266	252	273	257	256	277	252	161	143	147	167	193
121 - 240 days (5 - 8 months)	108	111	103	92	102	112	121	127	93	87	75	64	58
241 - 360 days (9 - 12 months)	81	89	86	90	86	84	78	68	68	74	91	93	83
361 - 540 days (13 - 18 months)	120	113	102	115	109	111	111	116	98	93	88	89	94
> 540 days (> 18 months)	802	825	844	845	863	887	892	911	816	832	848	859	883
Guardianship - SEA													
Median Age (50 th percentile) *	550	574	522	552	486	357	351	278	299	294	284	258	273
# of Cases in Age Interval													
0 - 120 days (0 - 4 months)	120	110	106	102	118	131	109	106	199	200	202	199	188
121 - 240 days (5 - 8 months)	25	33	36	34	30	21	20	21	55	51	61	54	46
241 - 360 days (9 - 12 months)	15	18	20	25	22	25	27	24	27	24	23	23	24
361 - 540 days (13 - 18 months)	12	13	15	13	16	23	26	24	38	45	41	34	31
> 540 days (> 18 months)	177	177	176	179	182	154	128	90	205	206	216	203	200
Adoption - SEA													
Median Age (50 th percentile) *	752	778	824	854	781	901	868	966	992	1140	1380	1173	1128
# of Cases in Age Interval													
0 - 120 days (0 - 4 months)	51	48	44	35	41	34	36	27	27	24	20	23	32
121 - 240 days (5 - 8 months)	8	12	10	19	21	22	23	18	17	11	12	10	8
241 - 360 days (9 - 12 months)	6	6	7	6	4	4	5	14	16	18	17	9	7
361 - 540 days (13 - 18 months)	11	8	10	11	13	7	7	6	5	5	4	14	12
> 540 days (> 18 months)	90	93	93	93	94	100	101	101	102	101	104	104	105
Parentage - SEA													
Median Age (50 th percentile) *	190	199	173	146	140	138	141	143	161	175	219	170	176
# of Cases in Age Interval													
0 - 120 days (0 - 4 months)	30	31	38	48	47	48	41	38	35	29	33	25	25
121 - 240 days (5 - 8 months)	27	23	16	12	11	14	18	24	28	25	21	20	22
241 - 360 days (9 - 12 months)	16	23	22	19	18	14	13	6	6	7	13	13	19
361 - 540 days (13 - 18 months)	9	7	10	12	11	14	10	11	10	10	6	4	4
> 540 days (> 18 months)	8	7	8	9	10	11	9	7	9	10	7	7	8

*Age of active pending cases is time elapsed from filing date to the end of the reporting period, minus any suspense time (in appeal, stay, mediation, arbitration) if applicable. The "median age" indicates the age of half (50%) of the pending cases (half are more, half are less) than the number of days indicated in the table.

"Civil" includes all civil actions (including RALJ), except "Matters Filed with Clerk" (Petition for Order Granting Judgment on Confession of Judgment, Tax Warrants, Abstract of Judgment, Foreign Judgment, and Transcript of Judgment), Domestic, Probate, Guardianship, Adoption, and Paternity cases.

Table 5. Age of Pending Cases (cont.)

MRJC	Mar 2025	Apr 2025	May 2025	Jun 2025	Jul 2025	Aug 2025	Sep 2025	Oct 2025	Nov 2025	Dec 2025	Jan 2026	Feb 2026	Mar 2026
Civil - MRJC													
Median Age (50 th percentile) *	112	114	111	117	122	129	132	131	137	133	136	137	135
# of Cases in Age Interval													
0 - 120 days (0 - 4 months)	1795	1702	1673	1727	1696	1653	1628	1639	1627	1733	1707	1662	1717
121 - 240 days (5 - 8 months)	783	753	719	713	803	825	864	879	863	882	849	860	775
241 - 360 days (9 - 12 months)	528	466	443	487	479	485	486	495	558	569	571	576	517
361 - 540 days (13 - 18 months)	246	265	310	330	340	344	320	322	325	332	368	383	401
541 - 720 days (19 - 24 months)	46	51	46	57	77	101	102	126	144	120	119	131	148
> 720 days (> 24 months)	44	41	38	36	43	45	40	39	41	40	45	47	56
Domestic- MRJC													
Median Age (50 th percentile) *	176	164	149	148	156	161	166	165	168	168	173	170	156
# of Cases in Age Interval													
0 - 120 days (0 - 4 months)	814	870	879	839	769	743	751	753	751	723	709	737	772
121 - 240 days (5 - 8 months)	459	438	408	410	483	501	503	477	455	440	443	446	423
241 - 360 days (9 - 12 months)	344	315	311	300	260	238	230	253	292	314	325	311	270
361 - 540 days (13 - 18 months)	183	180	177	178	172	181	175	161	153	133	139	146	153
> 540 days (> 18 months)	230	237	242	236	242	239	241	239	243	238	247	242	230
Probate – MRJC													
Median Age (50 th percentile) *	614	580	669	634	676	720	678	745	933	987	975	999	996
# of Cases in Age Interval													
0 - 120 days (0 - 4 months)	143	155	124	143	124	123	149	128	69	60	72	72	73
121 - 240 days (5 - 8 months)	63	67	65	56	58	44	41	49	21	21	23	20	25
241 - 360 days (9 - 12 months)	35	34	40	52	46	46	47	37	23	16	14	18	15
361 - 540 days (13 - 18 months)	45	44	42	42	44	46	45	52	37	42	38	34	31
> 540 days (> 18 months)	314	319	321	323	332	339	348	355	258	260	268	271	279
Guardianship - MRJC													
Median Age (50 th percentile) *	279	276	294	290	331	326	322	293	336	350	296	185	184
# of Cases in Age Interval													
0 - 120 days (0 - 4 months)	103	105	114	125	112	108	96	86	160	162	168	186	198
121 - 240 days (5 - 8 months)	37	31	26	26	25	23	26	21	44	40	53	55	54
241 - 360 days (9 - 12 months)	23	27	27	22	21	22	18	16	27	26	24	30	21
361 - 540 days (13 - 18 months)	17	19	23	27	27	30	28	27	43	46	39	25	24
> 540 days (> 18 months)	115	115	116	116	118	111	102	72	173	177	181	155	165
Adoption – MRJC													
Median Age (50 th percentile) *	1623	1653	1684	1714	1576	1776	2039	1950	2106	2143	2042	2070	1819
# of Cases in Age Interval													
0 - 120 days (0 - 4 months)	12	12	12	11	15	8	5	8	7	6	9	6	12
121 - 240 days (5 - 8 months)	2	2	2	1	1	4	4	3	2	0	1	4	4
241 - 360 days (9 - 12 months)	3	3	2	2	2	2	2	0	0	2	2	2	2
361 - 540 days (13 - 18 months)	3	1	2	4	4	4	3	5	3	1	1	1	1
> 540 days (> 18 months)	53	53	53	53	53	53	54	54	55	57	57	57	56
Parentage – MRJC													
Median Age (50 th percentile) *	193	185	170	159	155	150	160	170	171	147	160	163	180
# of Cases in Age Interval													
0 - 120 days (0 - 4 months)	47	55	56	57	56	56	55	55	62	66	58	60	55
121 - 240 days (5 - 8 months)	50	36	38	35	35	43	46	47	42	41	50	52	58
241 - 360 days (9 - 12 months)	22	32	26	27	25	17	18	17	21	26	28	24	24
361 - 540 days (13 - 18 months)	15	14	18	15	14	19	14	18	18	16	18	11	13
> 540 days (> 18 months)	10	10	11	11	10	8	12	10	11	11	9	14	14

*Age of active pending cases is time elapsed from filing date to the end of the reporting period, minus any suspense time (in appeal, stay, mediation, arbitration) if applicable. The “median age” indicates the age of half (50%) of the pending cases (half are more, half are less) than the number of days indicated in the table.

“Civil” includes all civil actions (including RALJ), except “Matters Filed with Clerk” (Petition for Order Granting Judgment on Confession of Judgment, Tax Warrants, Abstract of Judgment, Foreign Judgment, and Transcript of Judgment), Domestic, Probate, Guardianship, Adoption, and Parentage cases.

Table 6. SEA/MRJC Filings, Resolutions, and Pending Caseload as a Percentage of All Cases

	Mar 2025	Apr 2025	May 2025	Jun 2025	Jul 2025	Aug 2025	Sep 2025	Oct 2025	Nov 2025	Dec 2025	Jan 2026	Feb 2026	Mar 2026
Total Filings	4073	3946	3862	3557	3813	3517	3637	3739	3098	3742	3619	3457	4227
SEA - # of Cases Filed	2530	2478	2453	2202	2434	2242	2304	2383	2001	2322	2269	2142	2665
MRJC - # of Cases Filed	1543	1468	1409	1355	1379	1275	1333	1356	1097	1420	1350	1315	1562
SEA %	62%	63%	64%	62%	64%	64%	63%	64%	65%	62%	63%	62%	63%
MRJC %	38%	37%	36%	38%	36%	36%	37%	36%	35%	38%	37%	38%	37%
Total Resolutions	3819	3905	3792	3335	3506	3356	3455	3637	2900	3569	3364	3391	3786
SEA - # of Cases Resolved	2352	2382	2329	2096	2197	2106	2150	2292	1892	2260	2106	2121	2428
MRJC - # of Cases Resolved	1467	1523	1463	1239	1309	1250	1305	1345	1008	1309	1258	1270	1358
SEA %	62%	61%	61%	63%	63%	63%	62%	63%	65%	63%	63%	63%	64%
MRJC %	38%	39%	39%	37%	37%	37%	38%	37%	35%	37%	37%	37%	36%
Total Pending Cases	17627	17509	17495	17670	17885	17967	18070	18139	18330	18428	18554	18525	18297
SEA - # of Cases Pending	11043	11057	11131	11209	11399	11506	11617	11696	11802	11828	11919	11887	11711
MRJC - # of Cases Pending	6584	6452	6364	6461	6486	6461	6453	6443	6528	6600	6635	6638	6586
SEA %	63%	63%	64%	63%	64%	64%	64%	64%	64%	64%	64%	64%	64%
MRJC %	37%	37%	36%	37%	36%	36%	36%	36%	36%	36%	36%	36%	36%

All civil actions (including RALJ), except "Matters Filed with Clerk" (Petition for Order Granting Judgment on Confession of Judgment, Tax Warrants, Abstract of Judgment, Foreign Judgment, and Transcript of Judgment), Domestic, Probate, Guardianship, Adoption, and Parentage cases.

Appendix Glossary and Definition

Active Status

A case is active if it is not on suspense status (see Suspense Status).

Adoption and Parentage Cases (case type 5)

ADP - Adoption
CFI - Confidential Intermediary
CHN - Confidential Change of Name
DIP - Disestablishment of Parentage
MDS - Modification/Support Only
MOD - Modification
MSC - Miscellaneous
OAA - Open Adoption Agreement
PAD - De Facto Parentage
PAG - Pre Birth Establish Parentage Genetic
PAS - Establish Parentage Gestational Surrogacy
PAT - Parentage
PPR - Initial Pre Placement Report
PRC - Parentage Rescission/Challenge
PUR - Parentage (URES/AUIFSA)
REL - Relinquishment
ROB - Relocation Objection
TER - Termination of Parental Rights

Case

A case is defined as a filing with an assigned case number.

Civil Cases (case type 2, no RALJ)

ALR - Administrative Law Review
ALRLI - L&I Administrative Law Review
AOD - Assurance of Discontinuance
ASB - Asbestos
ASP - Asbestos Personal Injury
ASW - Asbestos Wrongful Death
BAT - Petition to Appeal/Amend Ballot Title
CAA - Motion to Confirm/Compel Arbitration Award
CFJ - Petition for Order Granting Judgment on Confession of Judgment
CHN - Non Confidential Change of Name
COL - Collection
COM - Commercial
CON - Condemnation
CRP - Certificate of Restoration of Opportunity
CRR - Petition for Certificate of Rehabilitation
DOL - Appeal Licensing Revocation
DSF - Notice of Deposit of Surplus Funds from Trustee's Sale of Real Property
DVP - Domestic Violence
ECP - Enforcement of Canadian Protection Order
EOM - Emancipation of Minor
FOR - Foreclosure
FPO - Foreign Protection Order
FVL - Motion to Show Cause /Fruivolous Lien
HAR - Unlawful Harassment
HSI - Application for Health & Safety Inspection
INJ - Injunction
IPL - Complaint for Interpleader
LUP - Land Use Petition
MAL - Other Malpractice
MED - Medical Malpractice
MER - Meretricious Relationships
MHA - Malicious Harassment
MSC - Miscellaneous
MST - Minor Settlement
MWP - Minor Work Permit
NJF - Non Judicial Filing
OSS - Petition to Issue Out of State Subpoena
PBC - Petition for Birth Certificate Change
PBJ - Petition for Justification /Bail Bond Company
PCC - Petition for Civil Commitment

PFA - Property Fairness Act
PIN - Personal Injury
PPT - Petition for Perpetuation of Testimony
PRA - Public Records Act
PRG - Property Damage /Gangs
PRP - Property Damage
PVO - Petition for Vehicle Ownership
QTI - Quiet Title
RCV - Petition to Appoint Receiver
RDR - Relief from Duty to Register
RFR - Restoration of Firearms Rights
RRC - Remove Restricted Covenant
SCA - Small Claims Appeal
SDR - School District /Required Action Plan
SER - Subdivision Election Process Law Review
SPC - Seizure of Property From Commission of a Crime
SPR - Seizure of Property Resulting From a Crime
STK - Stalking Protection
SXP - Sexual Assault Protection
TMV - Tort /Motor Vehicle
TSS - Petition for Approval of Transfer of Structured Settlement
TTO - Tort /Other
UND - Unlawful Detainer
VAP - Vulnerable Adult Protection Order
VEP - Voter Election Process Law Review
VVT - Victims of Motor Vehicle Theft /Civil Action
WDE - Wrongful Death
WHC - Writ of Habeas Corpus
WMW - Miscellaneous Writs
WRM - Writ of Mandamus
WRR - Writ of Restitution
WRV - Writ of Review
XRP - Extreme Risk Protection Order

Completion

A case is completed if dispositive document is filed with the court following resolution.

Domestic Cases (case type 3)

CIR - Committed Intimate Relationship
CUS - Child Custody
DIC - Dissolution w/ Children
DIN - Dissolution no Children
DIS - Dissolution
DPC - Dissolution of Domestic Partnership w/ Children
DPN - Dissolution of Domestic Partnership /No Children
FJU - Out of State Support Registration /Foreign Judgment
INC - Annulment /Inv of Marriage w/ Children
IND - Annulment /Inv of Domestic Partnership w/ Children
INP - Invalidity, Domestic Partnership
INV - Annulment /Invalidity
MDS - Modification/Support Only
MOD - Modification
MSC - Miscellaneous
MWA - Mandatory Wage Assignment
OSC - Out of State Custody
PPS - Parenting Plan / Child Support
PSO - Petition for Entry of KC Support Order
RCV - Relative Child Visitation
RIC - Reciprocal, Resp in County
ROB - Relocation /Objection
ROC - Reciprocal, Resp out of County
RVC - Relative Child Visits
SDC - Legal Separation, Domestic Partnership w/ Children
SEC - Legal Separation w/ Children
SEP - Legal Separation
SPD - Legal Separation, Domestic Partnership /No Children
TSS - Structured Settlement

EFC - Extended Foster Care, Dependency
GFC - Guardianship Foster Children
RPR - Reinstatement of Parental Rights
RVS - Relative Visitation
TRU - Truancy
VYG - Vulnerable Youth Guardianship

Probate and Guardianship Cases (case type 4)

ABS - Absentee
AOS - Affidavit of Successor
ASE - Affidavit of Small Estate
DSC - Disclaimer
EST - Estate
FNW - Foreign Will
G/E - Guardianship/Estate
GDE - Guardianship of the Estate
GDN - Guardianship
GDP - Guardianship of the Person
LGD - Limited Guardianship
LGE - Limited Guardianship of the Estate
LGP - Limited Guardianship of the Person
MGD - Minor Guardianship
MSC - Miscellaneous
MST - Minor Settlement
NJB - Non Judicial Binding/TEDRA Agreement
NNC - Non Probate Notice to Creditor
POA - Petition for Relief (RCW 11.94) /Power of Attorney
RGR - Registration of Guardianship
RTR - Registration of Trust /Trust Situs
SNT - Special Needs Trust
TDR - Trust/Estate Dispute Resolution
TRS - Trust
WLL - Will Only

Resolution

A case is resolved if all issues in the complaint are fully adjudicated.

Suspended Case

A case is placed in suspense status from active status during the reporting period.

Suspense Status

A case is on suspense status if it is on warrant, appeal, stay, mediation, arbitration (“Deferred Prosecution” is not a suspense status, but is treated as a resolution).