

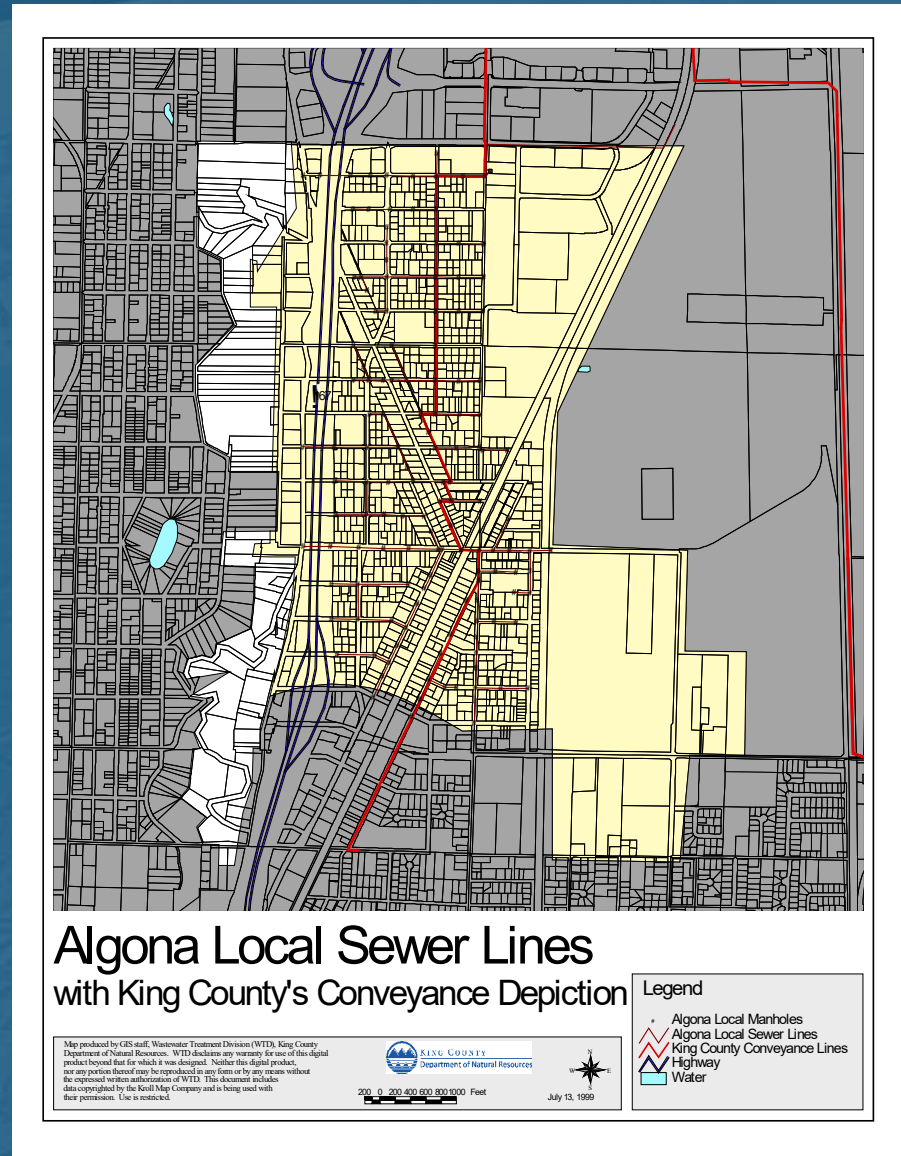


# Mapping Local Public Agency Sewer Systems in the WTD GIS

Shaun O'Neil  
Lead GIS Specialist  
KCWTD  
March 7, 2019

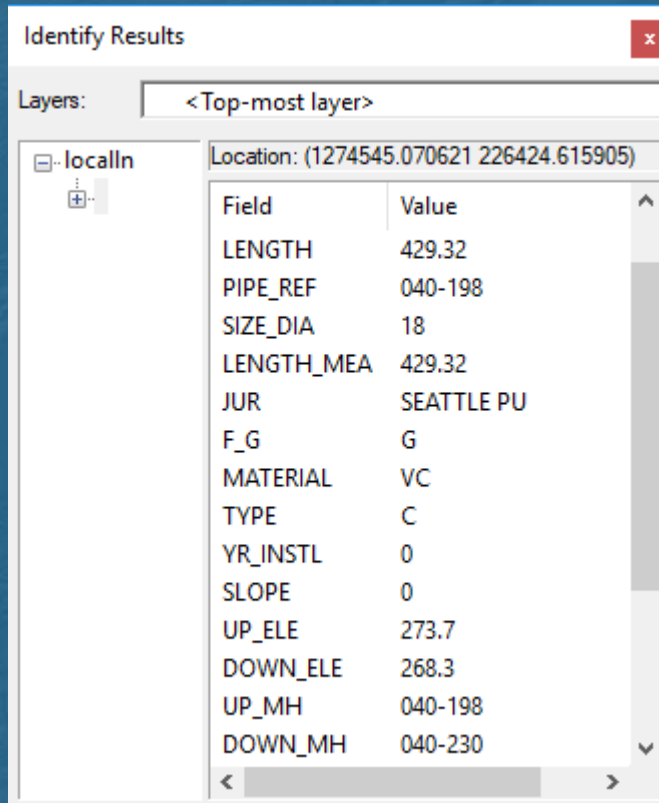
# Background – History

- Started compiling system wide local conveyance dataset in 1999
- Sources included:
  - CAD
  - GIS
  - Paper Maps
  - Hand-drawn sketches



# Background – Attribute Schema

- Developed generalized schema for sewers and maintenance holes



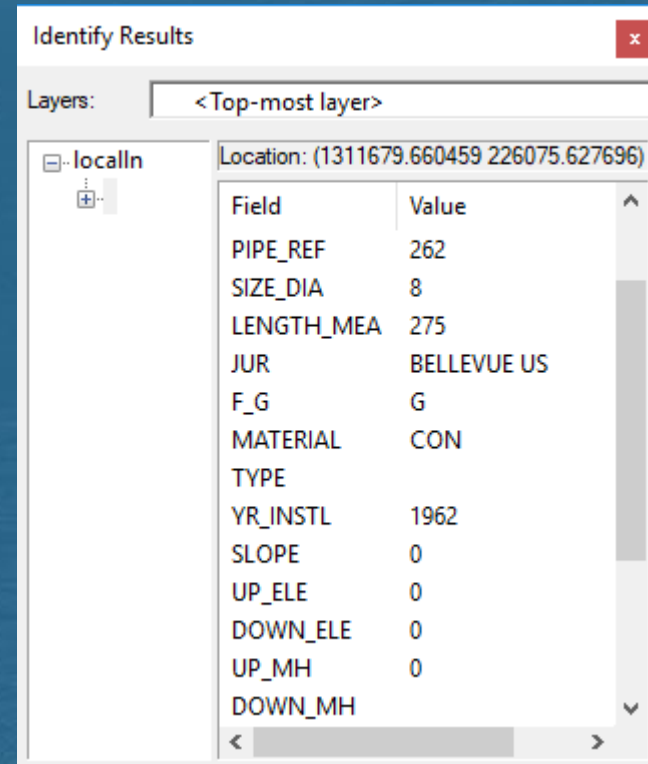
Identify Results

Layers: <Top-most layer>

localln

Location: (1274545.070621 226424.615905)

Field	Value
LENGTH	429.32
PIPE_REF	040-198
SIZE_DIA	18
LENGTH_MEA	429.32
JUR	SEATTLE PU
F_G	G
MATERIAL	VC
TYPE	C
YR_INSTL	0
SLOPE	0
UP_ELE	273.7
DOWN_ELE	268.3
UP_MH	040-198
DOWN_MH	040-230



Identify Results

Layers: <Top-most layer>

localln

Location: (1311679.660459 226075.627696)

Field	Value
PIPE_REF	262
SIZE_DIA	8
LENGTH_MEA	275
JUR	BELLEVUE US
F_G	G
MATERIAL	CON
TYPE	
YR_INSTL	1962
SLOPE	0
UP_ELE	0
DOWN_ELE	0
UP_MH	0
DOWN_MH	

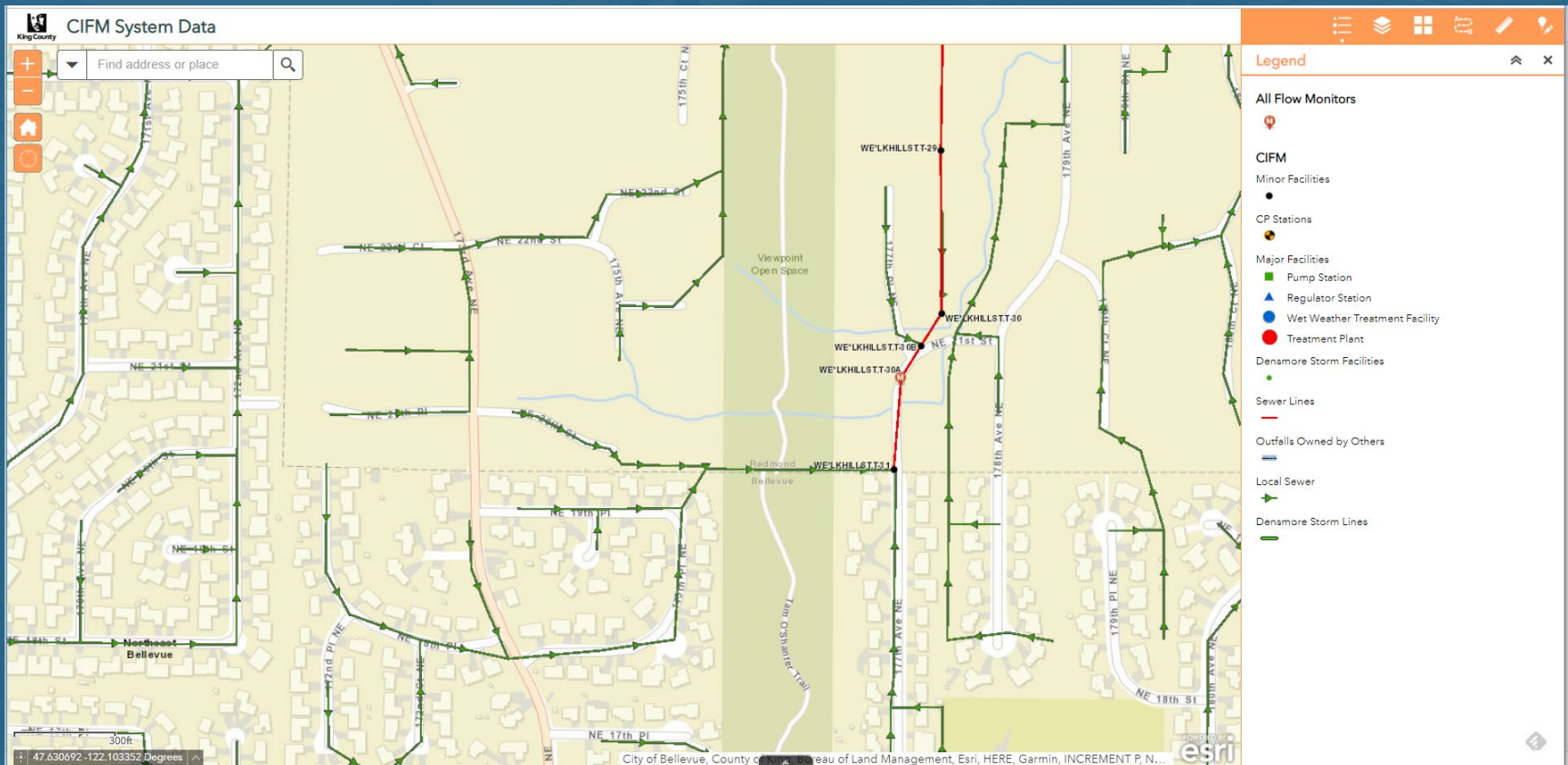
Sewer schema

Maintenance hole  
schema



# Current Use – OneCalls/CIFM

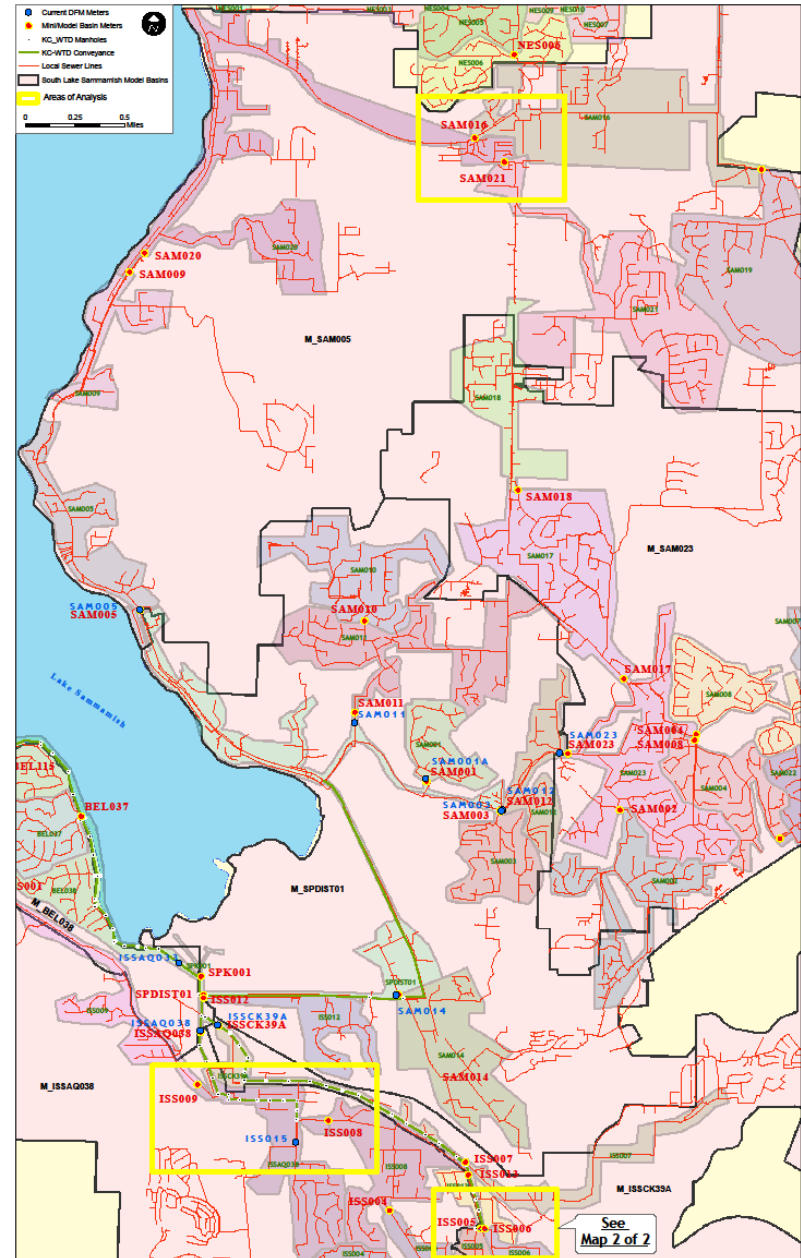
- Call before you dig
- Complaint and Emergency Response



# Current Use – Flow Monitoring/ CSI

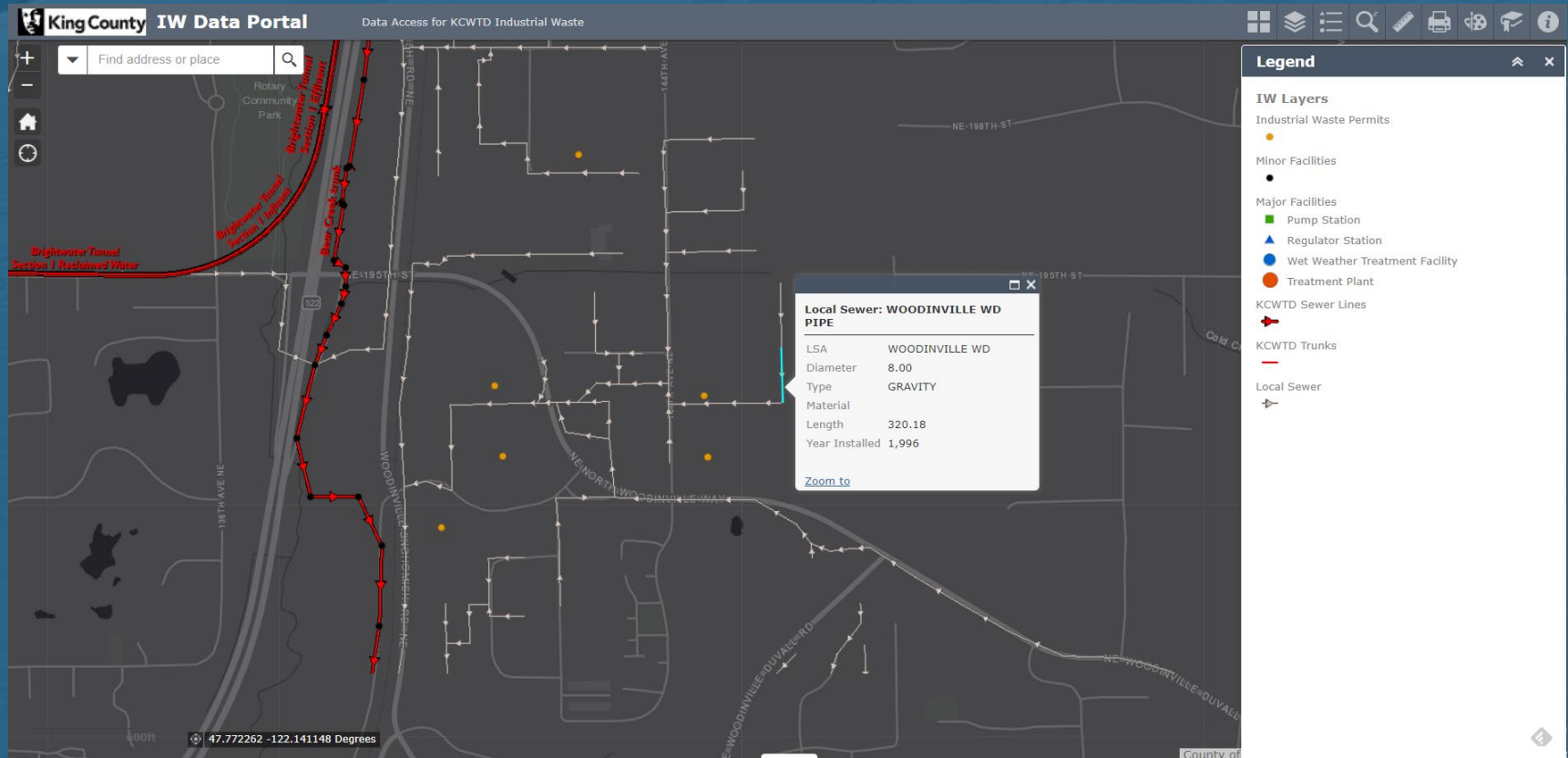
- Basin Delineation
- Flow Monitor Siting

Map 1 of 2: Flow Meter Location Analysis w/ Mini Basin Delineations



# Current Use – Industrial Waste

- Source Tracing



# Opportunities for Expanded Use - Cross agency information sharing

- Identify who to call for service or emergency response and what agency has infrastructure where.

**☰ KC WTD In-Take Call Service Area Look Up**

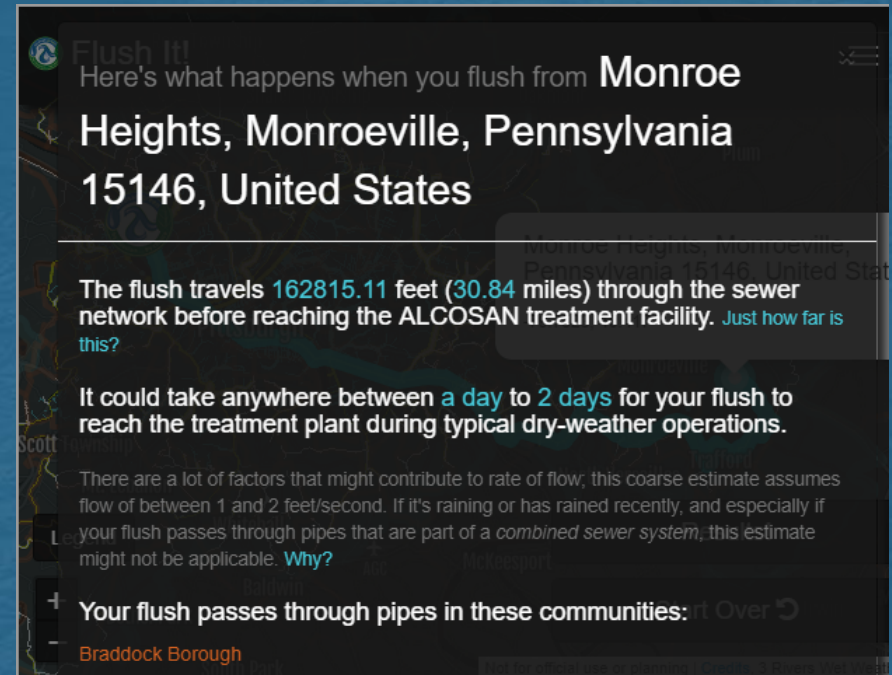
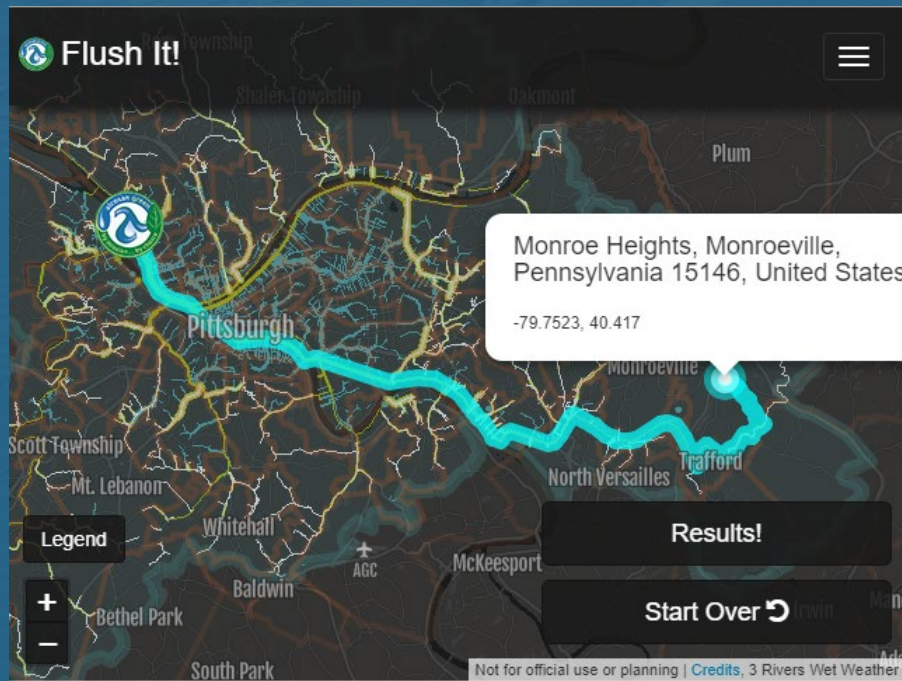
**Sewer Service Information**

KC WTD Service Area Information	
Service Area	KC WTD Service Area
Section Phone Number	East: 206-263-1760
Local Sewer Agency Name	BELLEVUE UTILITY SERVICES
Agency Web Link	<a href="#">More Info</a>

Content may not reflect National Geographic's current map policy. Sources: National Geographic, Esri, G...

# Opportunities for Expanded Use - Emergency Response and Ratepayer Education

- Spill/backup tracing
- Ratepayer tools and education
  - Who do I call?
  - Where does my flow go?





# King County GIS Resources

- **A list of King County GIS Data and associated metadata**
  - <http://www.kingcounty.gov/operations/GIS/GISData/Metadata.aspx>
- **Sites to download King County GIS Data**
  - <https://www.kingcounty.gov/services/gis/GISData.aspx>
- **iMap – A general purpose GIS tool based on King County Thematic Layers**
  - <http://gismaps.kingcounty.gov/iMap/>
- **Parcel Viewer – A tool for accessing King County Assessors' data**
  - <http://gismaps.kingcounty.gov/parcelviewer2/>



# Thank you

Shaun O'Neil

[shaun.oneil@kingcounty.gov](mailto:shaun.oneil@kingcounty.gov)

206.477.4432

...for questions, data, etc.