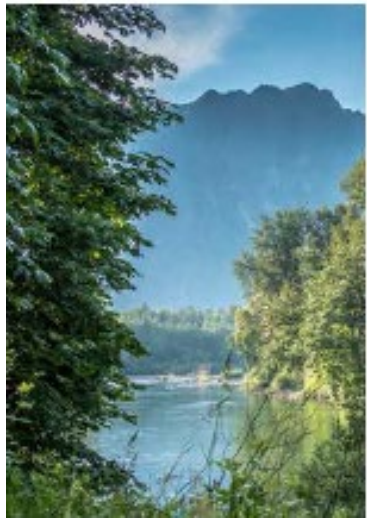
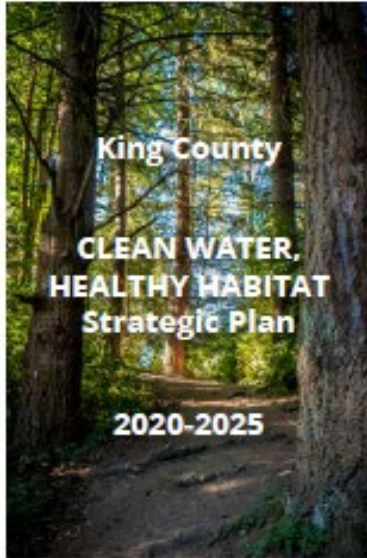




Clean Water Healthy Habitat



Initiative Overview

MWPAAC
May 26, 2021



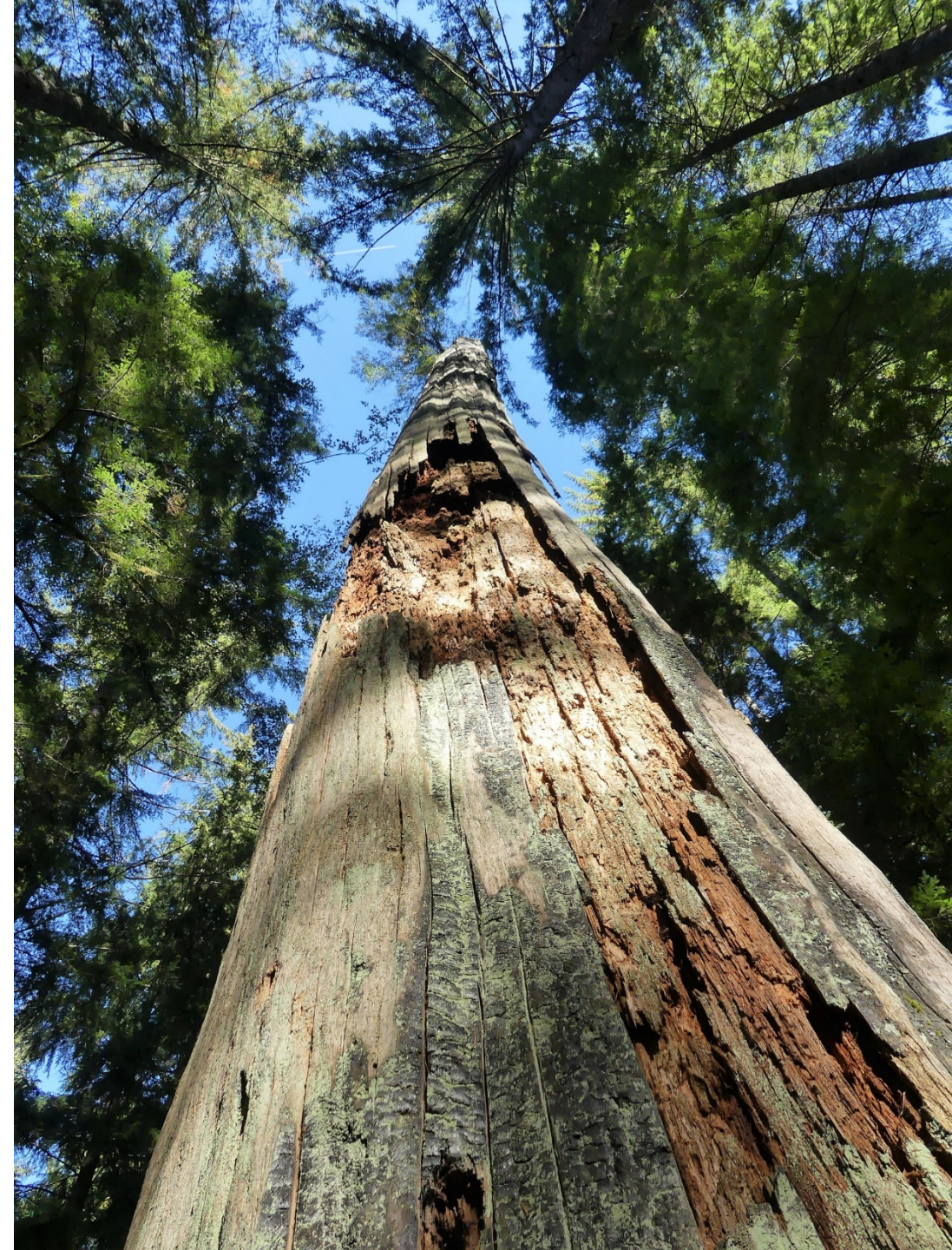
Clean Water
Healthy Habitat

Clean Water, Healthy Habitat Vision:

Protect and restore the water and land that sustains all of us within a generation.

Briefing Objectives:

- Why are we doing this?
- Goals and measures
- Key principles and strategies
- Connection to wastewater system and services



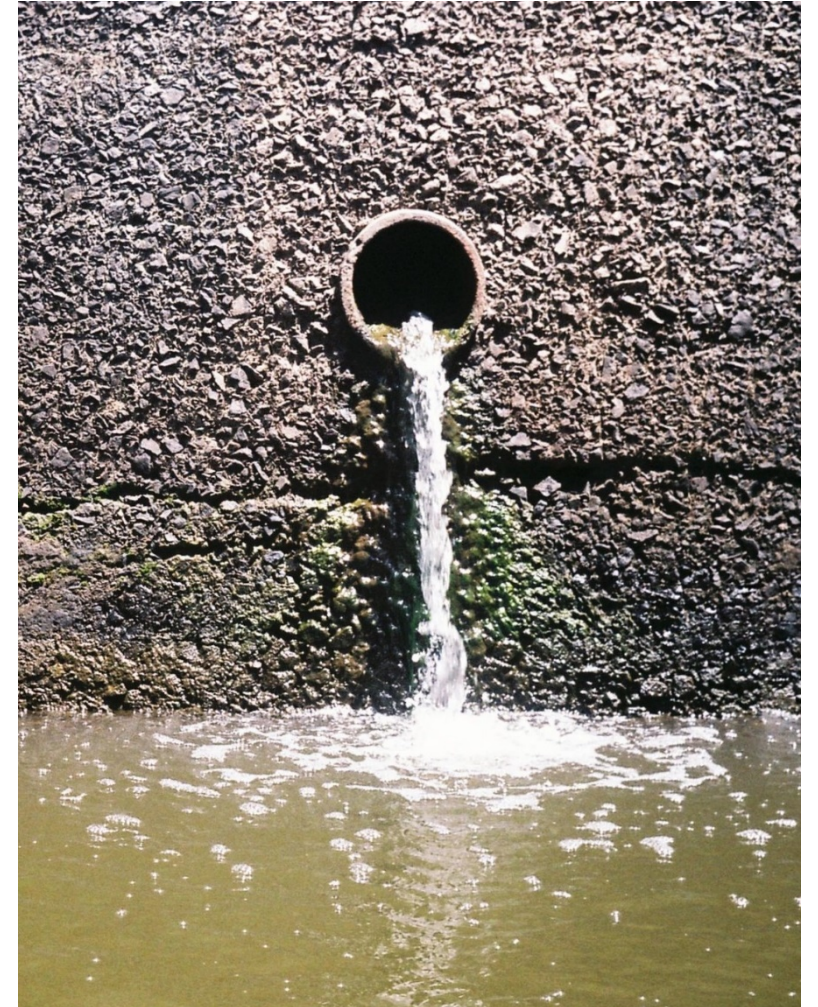
Focus on Outcomes



Clean Water
Healthy Habitat

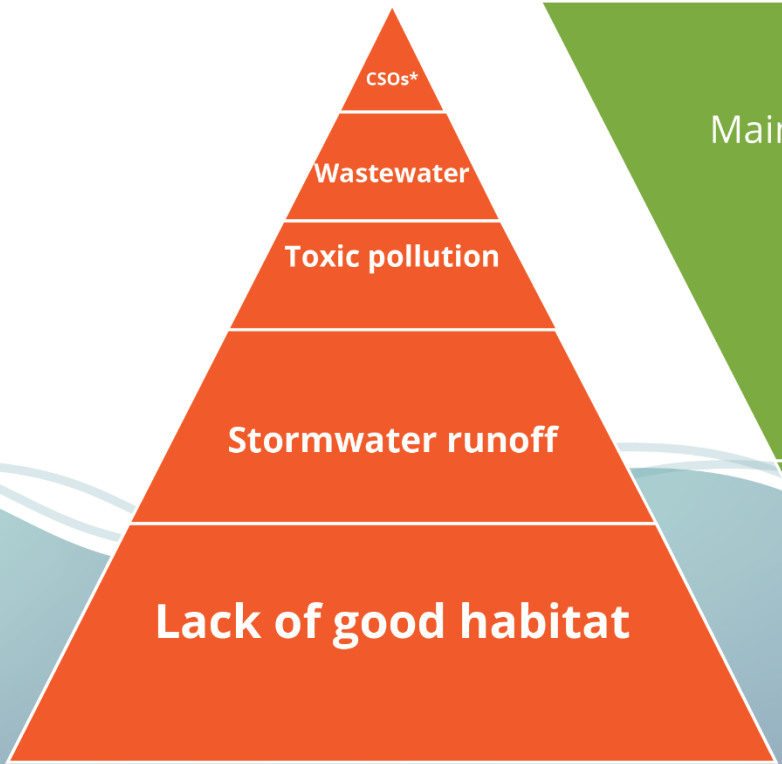
Questions During 2019-20 Budget Development:

- *What are we currently investing in?*
- *What will that get us for outcomes? Are those investments on track to get us to our long-term goals?*
- *Are our investments equitable?*
- *What are we *not* investing in that is a priority?*

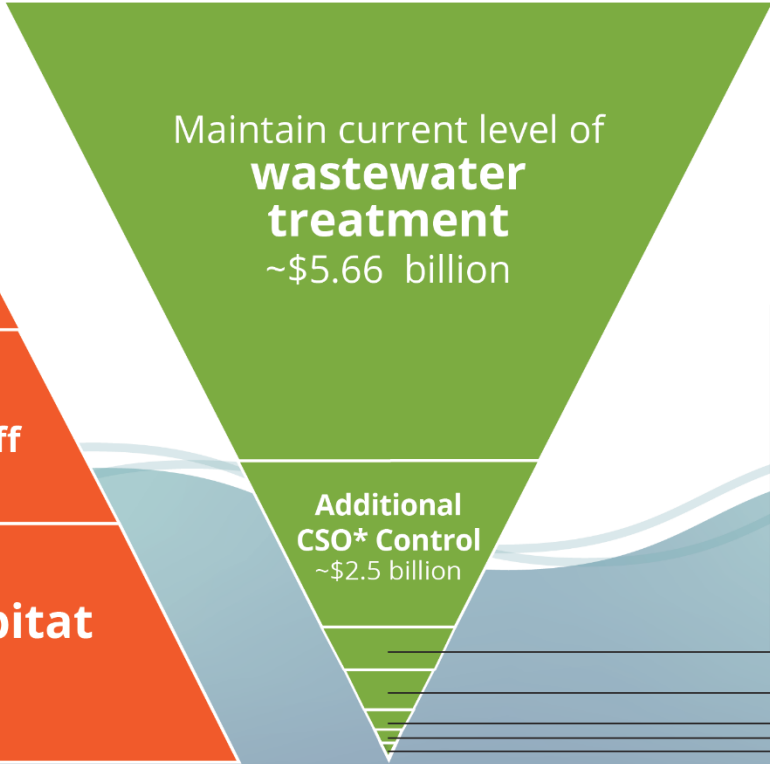


**PROJECTED 10-YEAR INVESTMENTS (\$9.5 Billion)—
LARGEST DRIVEN BY CURRENT REQUIREMENTS**

THREATS



*Combined Sewer Overflow



Habitat
(Restoration, open spaces, forestry/agriculture shorelines, watershed, fish passage, and land protection)
~\$548 Million

Stormwater management
~\$230 Million

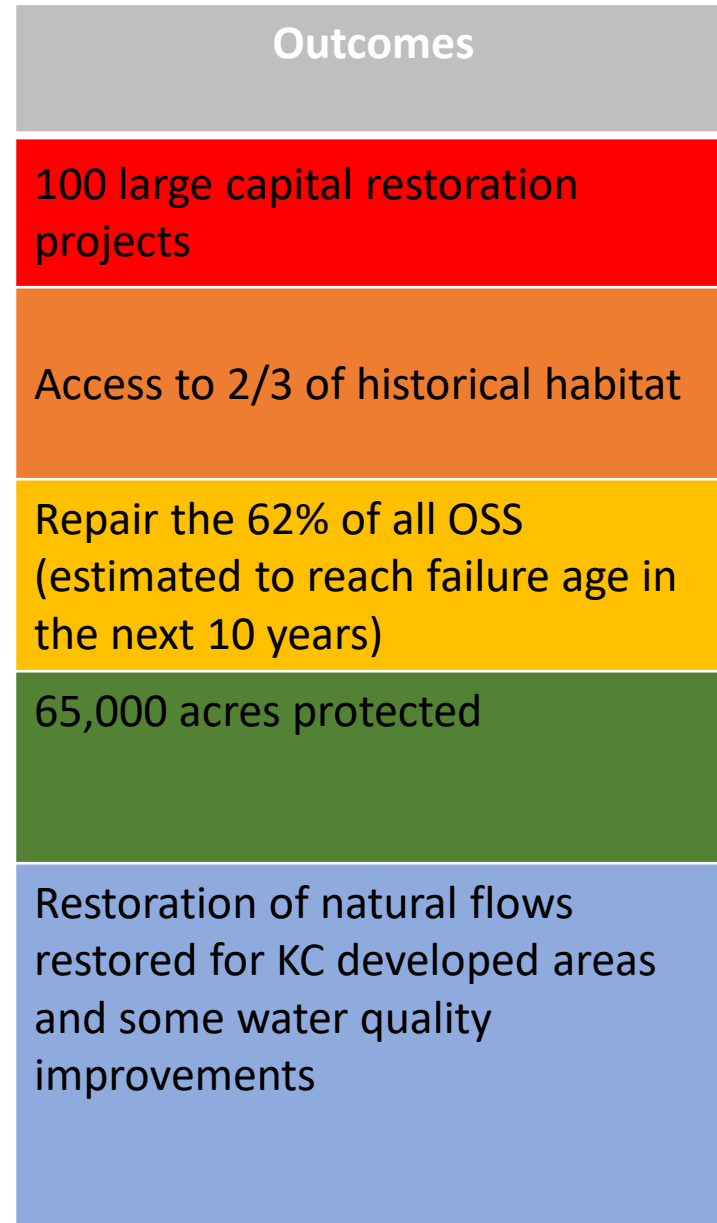
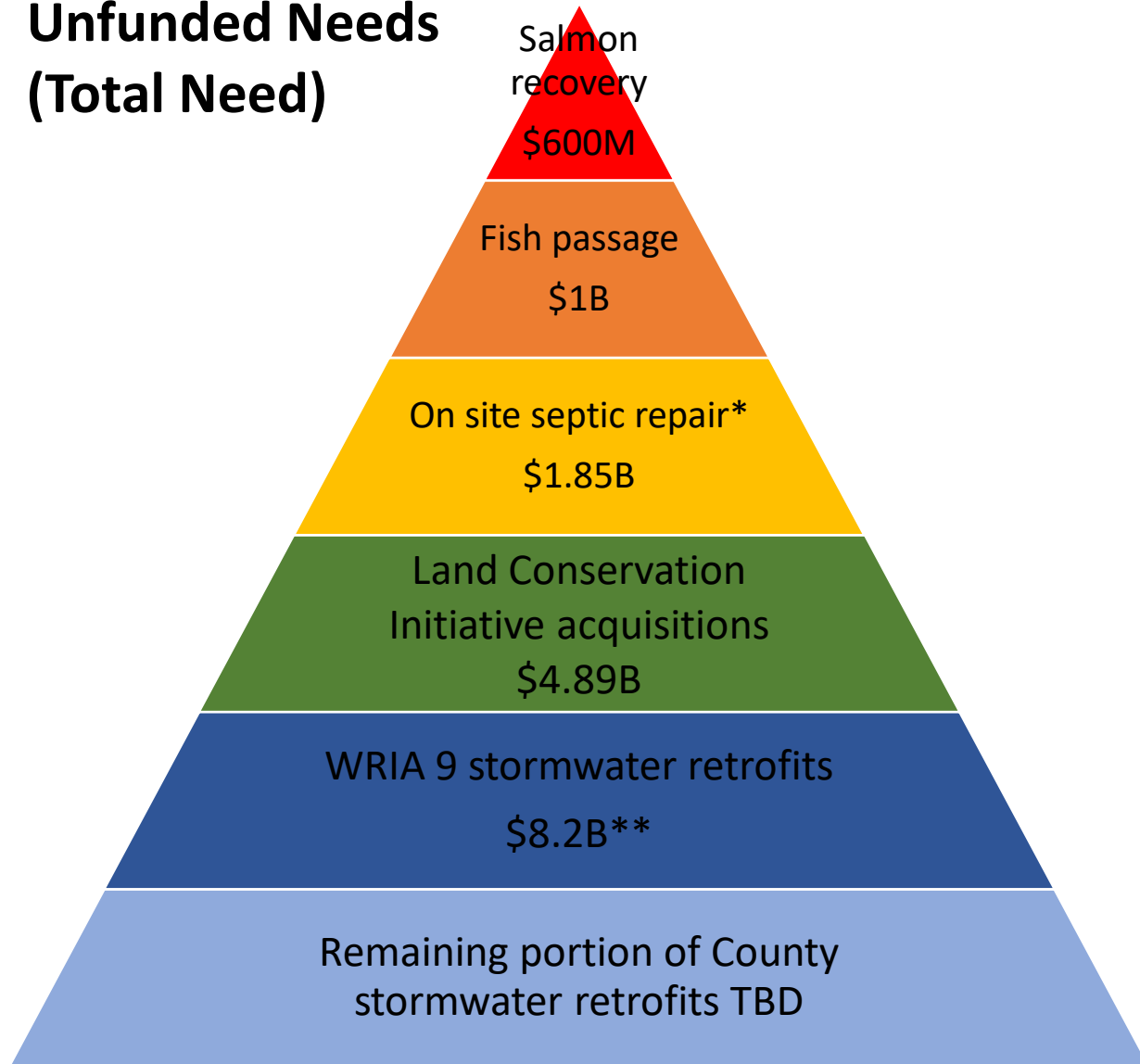
Reduce ongoing sources of toxics
~\$127 Million

Habitat
(Maintenance)
~\$382 Million

Toxics cleanup
~\$36 Million

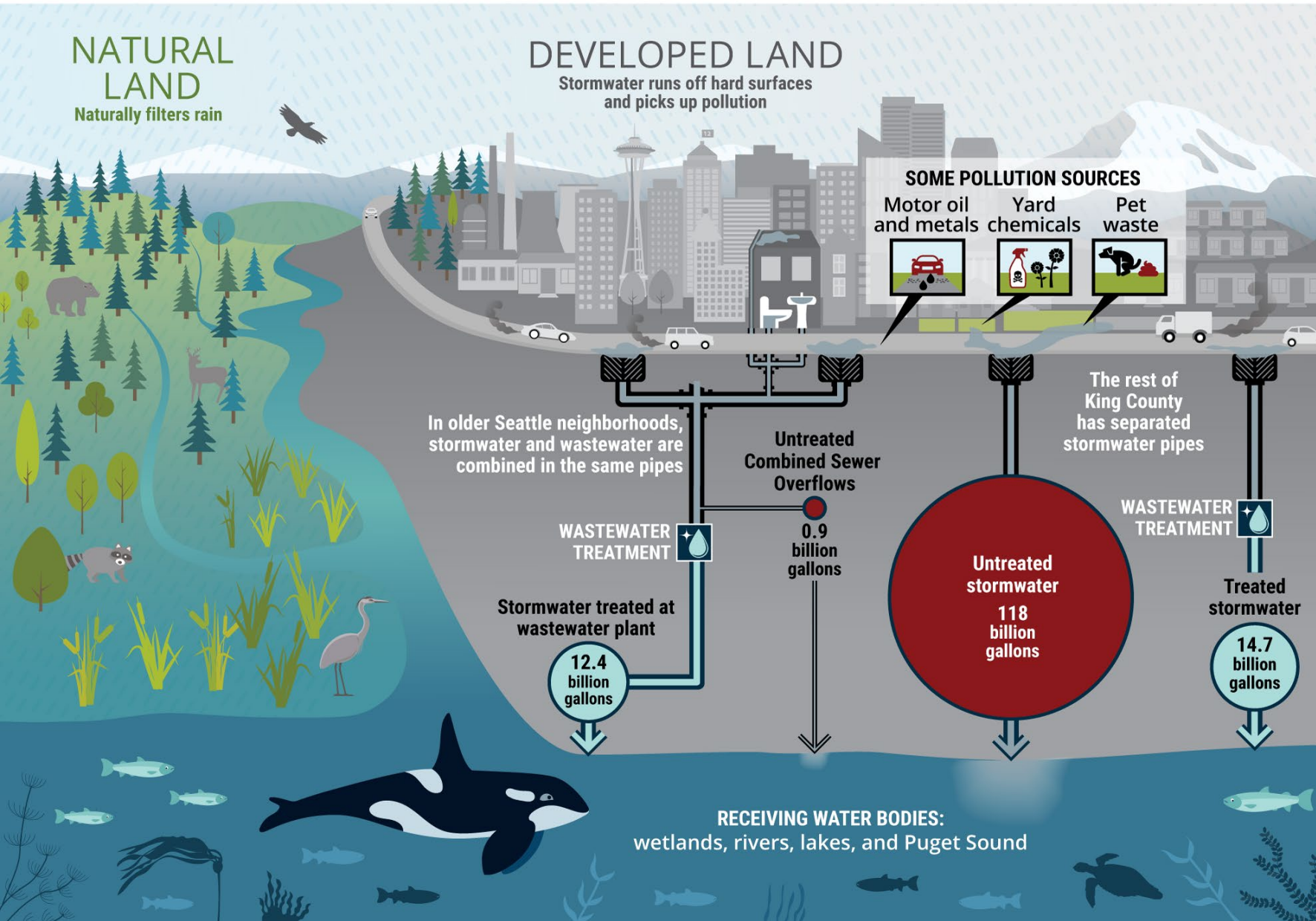
The right investments at the right time in the right places.

Unfunded Needs (Total Need)



*62% of OSS expected to reach failure age in next 10 years, average cost of \$35K to repair systems ** 30-years of O&M

What happens to the rain that falls each year in King County?



Stormwater is the largest threat to WQ in the Puget Sound

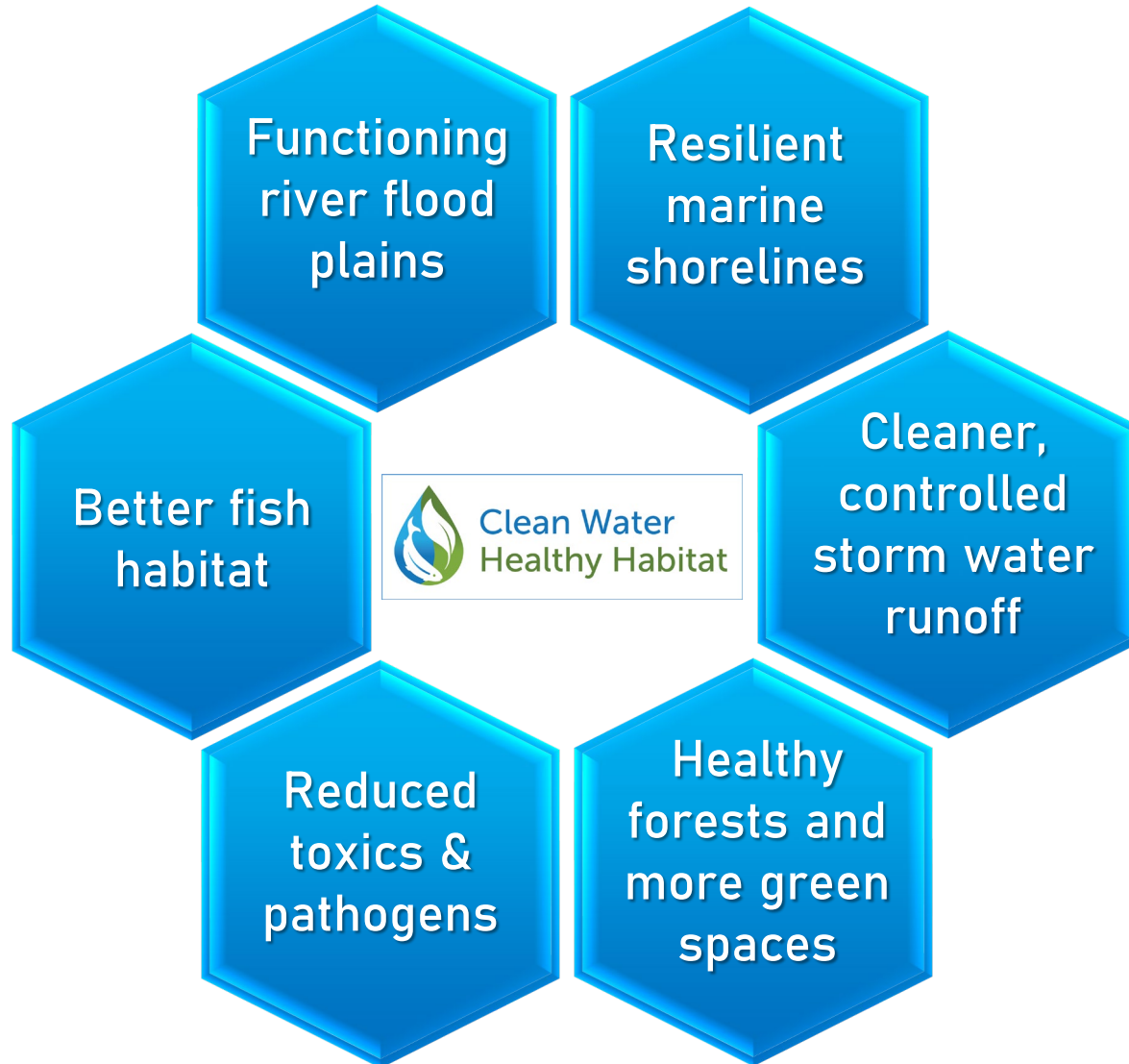
All jurisdictions could be compliant with their NPDES permits, and we still have 118 billion gallons of polluted runoff running into KC waterbodies each year

Asking the question:

What is the most efficient and effective way to accelerate and improve water quality outcomes?

Goal Elements

Achieve the best environmental outcomes
Deliver benefits to people
Eliminate racial inequities in outcomes



- 2 measures for each goal
- Worked closely with Puget Sound Partnership and other existing frameworks
- Over the next 5 years, programs will be asked to articulate their contribution to these goals and deliver on multiple goals where possible
- Changes in status will be reported in 2025

Environmental Work Across the Enterprise



Strategies Overview

Organized by Principles from the Executive Order (LUD-12-2-EO):

- Equitable Investments and Community Engagement
- Integration
- Systems Approach
- Innovation
- Outcome-driven Decision Making



Strategies

Principle: Equitable Investments and Community Engagement

- Community engagement and disparity data collection

Principle: Integration

- Integrated capital planning (CPMWG) +monitoring

Principle: Standardization and Systems Approach

- Add criteria to grants/incentives that reflect CWHH goals

Principle: Innovation

- Innovative funding approaches
 - Adjustments to existing governmental fund sources (CFT lift, bonding changes, etc.)
 - Expansion of ecosystem credit markets (wetlands, stormwater, carbon, etc.)
 - Goal driven private capital models

Principle: Outcome-driven decision making - regulations and policy

- Explore regulatory alternatives for improved water quality and habitat outcomes
 - CSO and stormwater
 - Nutrients

Principles in application: Nutrients

Regulatory programs do not holistically connect actions to outcomes

Current nutrients approach will result in the need a fourth treatment plant that will not be functional for at least 20 years and could be upwards of \$7B

We are concerned about shallow embayment ecosystem condition and resilience

Robust ecosystems depend on improving more than one parameter

Call to action: Engage in the regional conversation

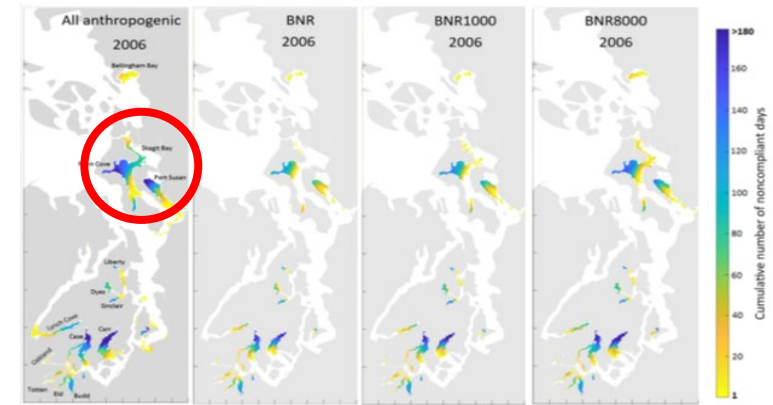


Figure 37. Four scenarios for cumulative number of days with depletions of dissolved oxygen for 2006. Far left, due to all anthropogenic sources. Center left, with biological nitrogen removal (BNR) for all WWTPs discharging into marine waters. Center right, with BNR for WWTPs discharging dissolved inorganic nitrogen (DIN) >1000 kg/day (BNR1000). Far right, with BNR for WWTPs discharging DIN >8000 kg/day (BNR8000).



Implementation 2021



- Supporting information (water quality modeling) developed
- Nutrient offset “proof of concept” at PSP Leadership Council on June 8th
- Draft nutrient permit expected mid-June
- Clean Water Plan development
- Other clean water efforts:
 - Pilot Pollution ID and Correction (PIC)
 - Stormwater Investment Plan underway

Questions?



Abby Hook

ahook@kingcounty.gov