

2020 King County Strategic Climate Action Plan (SCAP)



King County

CLIMATE ACTION

Clean Future. Strong Communities.

MWPAAC

September 22, 2021



SCAP Overview

- SCAP – What & Why
- WTD is a Key Player
- Key WTD Commitments
- Next Steps
- Q&A



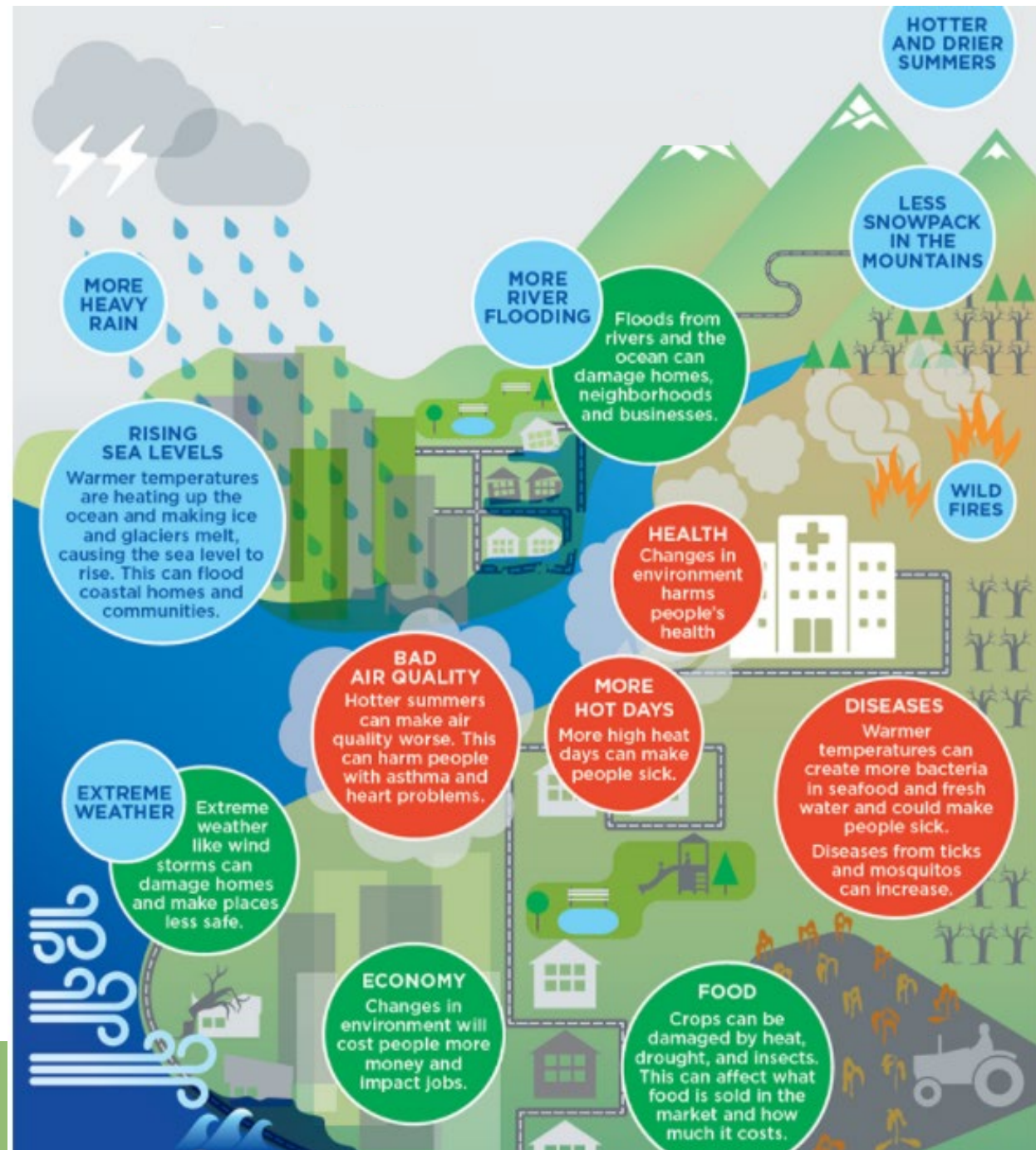
2020 SCAP – A Plan for Climate Action

- 5-year plan
- Updates the 2015 SCAP
- Adopted by Council on May 4th, 2021
- Integrates climate change into the work we do



Why is this important?

- Environmental Impact
- Health Impact
- Economic Impact



Why is WTD a Key Player in the SCAP?

→ Big energy user

→ Large capital program

→ Renewable resource producer

→ Infrastructure susceptible to sea level rise

→ Operations impacted by changes to precipitation patterns and storm intensities

SCAP Architecture

- Focus Areas
- Priority Actions
- Performance Metrics

NEW!



Section I Reducing Greenhouse Gas Emissions



Section II Sustainable & Resilient Frontline Communities



Section III Preparing for Climate Change



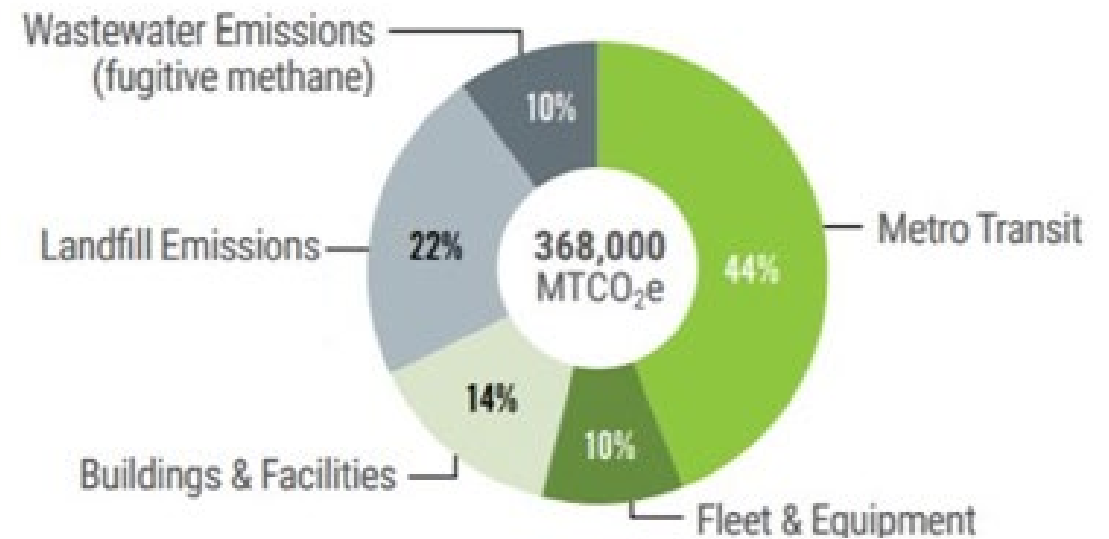
Reducing GHG Emissions Overarching Goal

Reduce total **GHG emissions** from government operations

- 50% by 2025
- 80% by 2030

2020 WTD Operational GHG Emissions:

~50k MTCO₂e



King County Operational GHG Emissions by Sector (2019)



Reducing GHG Emissions

Priority Actions:

- Achieve **carbon-neutral operations** by 2025
- Pursue aggressive **energy efficiency** targets
 - 12% by 2025
 - 17.5% by 2030
- Increase **production of biogas**

Reducing GHG Emissions

Priority Actions:

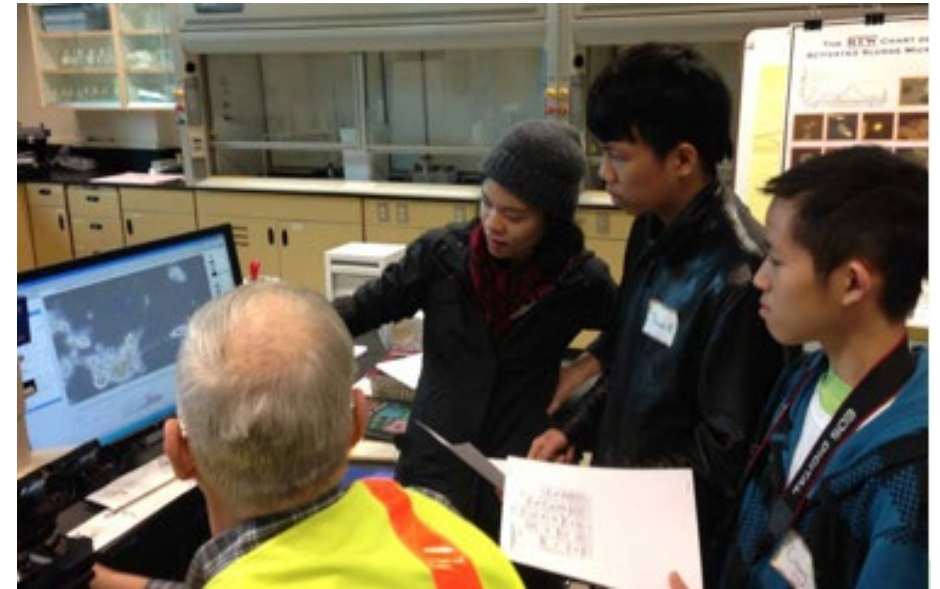
- Reduce **fossil fuel** use
- Increase **renewable energy** production and use
- Establish **water baseline** for WTD facilities and operations and **reduce water use**
- Achieve **Platinum** rating on 100% of WTD projects
- Specify **low-embodied carbon building materials** in capital projects



Sustainable & Resilient Frontline Communities

Priority Actions:

- Build capacity to engage frontline communities
- Cultivate relationships with frontline communities
- Elevate youth voices
- Develop equitable green workforce





Preparing for Climate Change

Priority Actions:

- Conduct **salinity intrusion** study
- Partner with USGS to evaluate **coastal flooding**
- Further assess impact of **heavy rain** events on WTD conveyance system



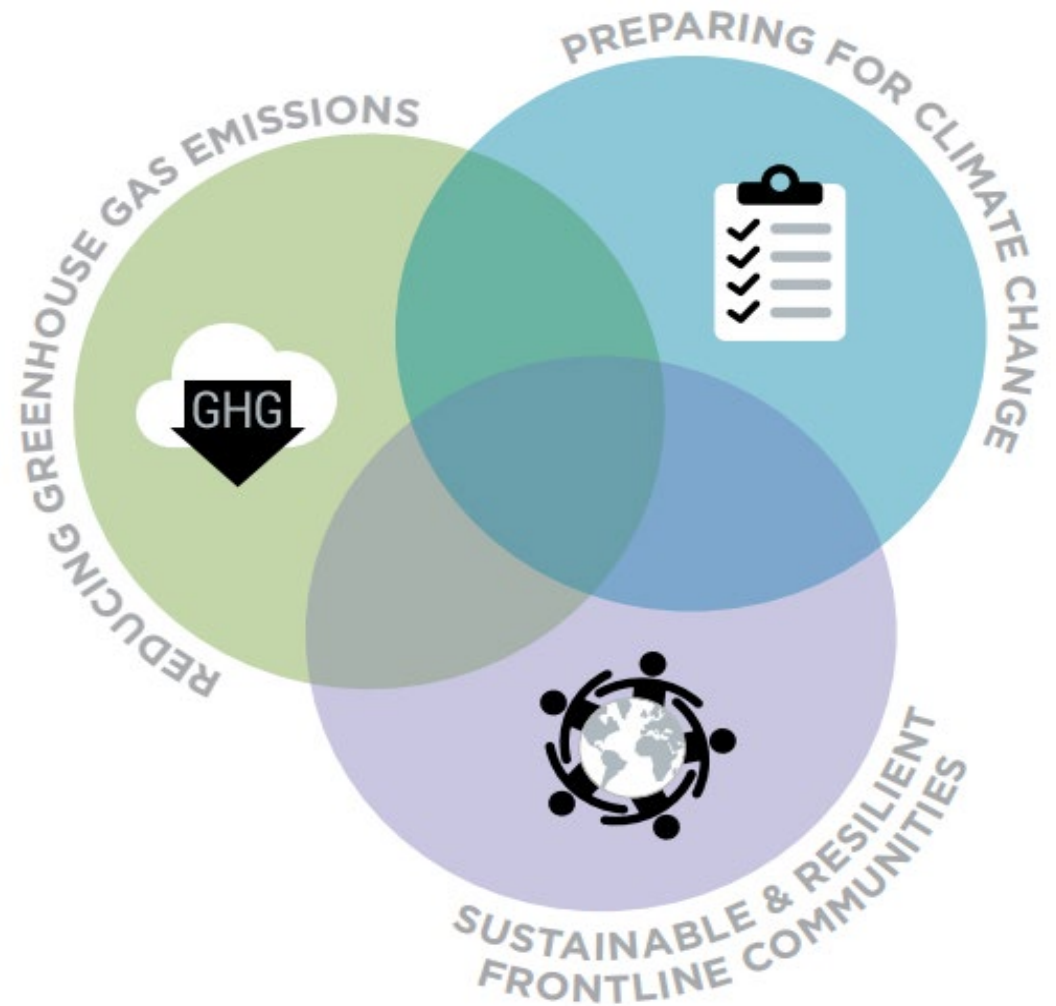
Preparing for Climate Change

Priority Actions:

- Develop guidance for incorporating **climate considerations** into WTD planning/projects
- Expand use of **recycled water** in Sammamish Valley

Next Steps

- Conduct SCAP briefings
- Identify gaps and resource needs
- Develop tools and trainings
- Initiate early action activities
- Track and report compliance



Questions?



King County

CLIMATE ACTION

Clean Future. Strong Communities.

