

# SPU's Wastewater Source Control Programs

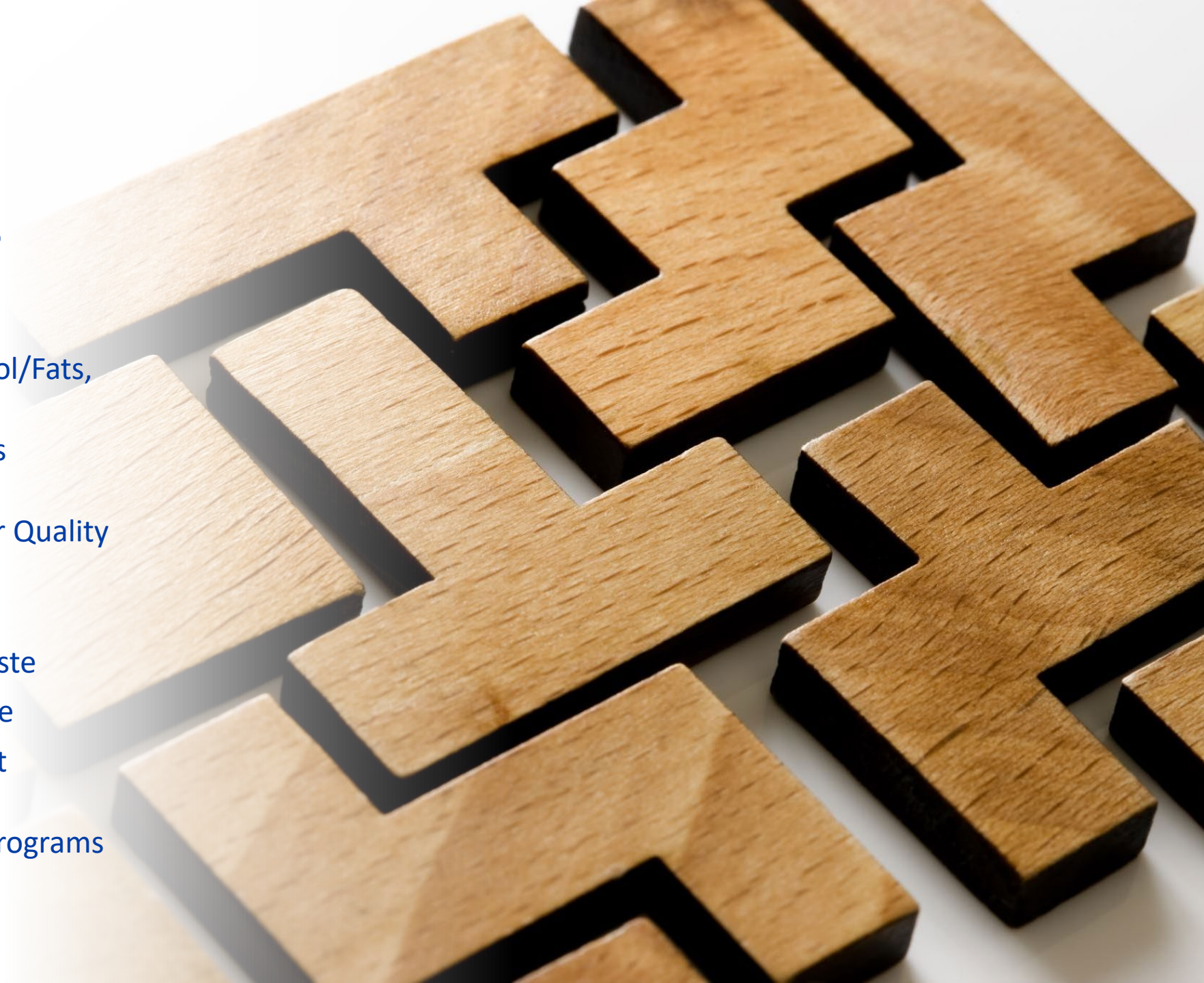
*August 3, 2023*





# Program Components

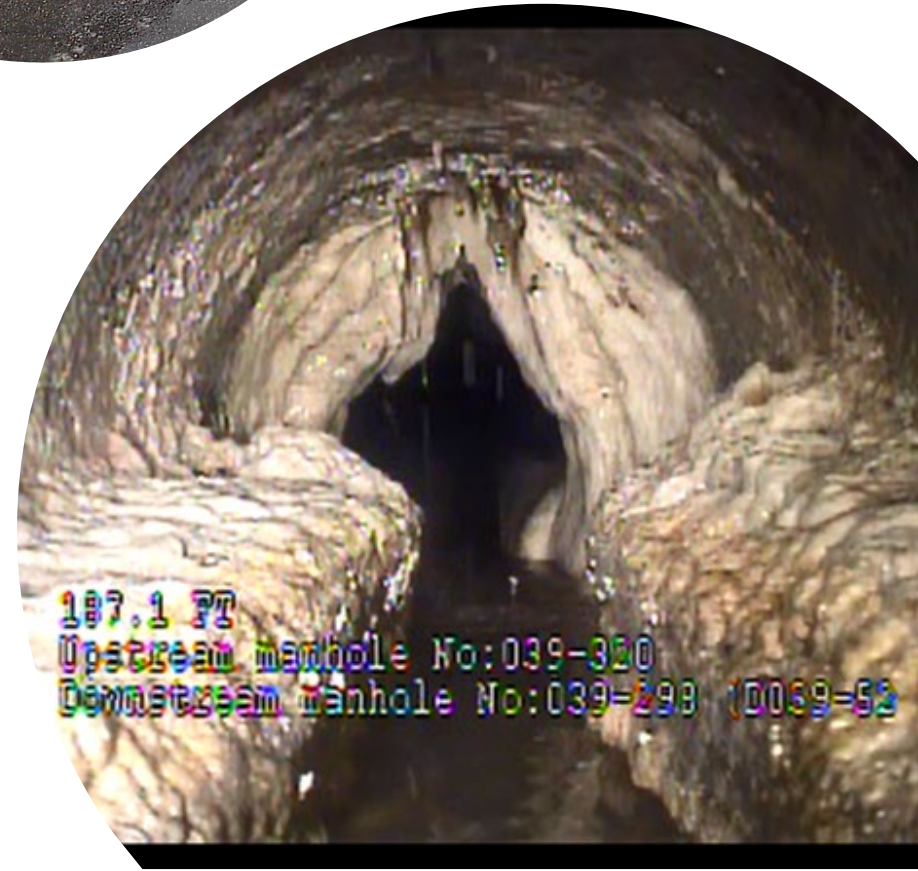
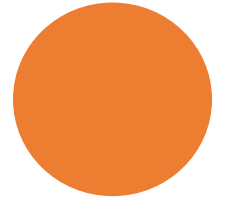
- Wastewater Source Control/Fats, Oils, and Grease
- Spill Response/Complaints Program
- Street Sweeping for Water Quality Program
- Food Waste/Composting
- Household Hazardous Waste
- Organics/Natural Yard Care
- Waste Prevention/Product Stewardship Programs
- Targeted Source Tracing Programs



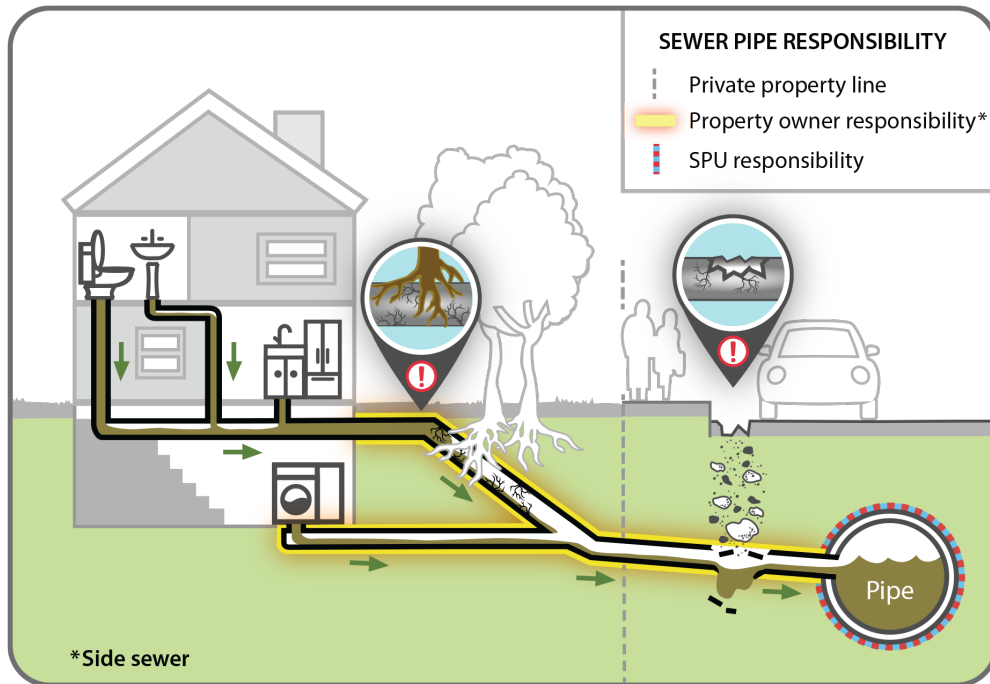


# Wastewater Source Control Team

- Fats, Oils, and Grease Inspections
- Industrial Discharge Permitting Support
- Discharge investigations
- Side Sewers and Drainage Investigations



# Side Sewer Assistance Program



- Pilot Program launched 2022
- Education regarding Side Sewer responsibilities and maintenance.
- Partnered with FOG and What to Flush for outreach and education.
- Field Response crews assist residents in determine responsibility.
- Intended for emergency or urgent repairs.
- 0% interest loan for repairs, no payments due up to 30 years.



# Spill Response and Complaints

- Immediate investigation and cleanup.
- City limits plus owned properties.
- Enforcement program with penalties.
- Coordinated with Federal, State and local responders.



# Street Sweeping for Water Quality

---

- Conducted city-wide, approx. 90% of arterials.
- Focused on industrial and arterial areas, roughly 50% in combined basins.
- Effectiveness sampling every 5 weeks.
- SAM study on emerging contaminant removal
- Percent load reduction in the wash off component varies from 13% (phosphorous), to 23% (copper).





# Food Waste and Composting

- Yard Waste requirement in 1988.
- Food waste collection began in 2005, enforceable by code since 2015.
- Required by code for all solid waste service locations.
- Benefits for energy use, environment, infrastructure.
- Reduces solids and FOG impacts to sewer lines.







# Household Hazardous Waste

- Operation of two drop off locations.
- Education and outreach to support the programs.
- Jointly funded by SPU and KC.
- Residential and Small Quantity business generators.
- Works in conjunction with the product stewardship programs.



# Organics & Natural Yard Care

---

- Countywide work – Joint Funded
- Natural yard care education
- Nutrient, pesticide runoff reduction
- Supporting Rainwise
- Source reduction through health landscapes





A large pile of electronic waste, including televisions, computer monitors, and keyboards, in a storage area. The items are stacked and piled together, with some items like a large CRT monitor and a flat-screen TV in the foreground. The background shows more electronics and a white plastic bag on the floor.

# E-Cycling Program

- Producer funded E-Cycling
- State mandated program
- Free recycling drop locations for key electronics.
- Educate customers through online and distributed materials.
- Pursuing establishment of Directors Rule to ban disposal of electronics and batteries covered by E-Cycle program.



# Pharmaceutical Takeback Program

---

- Extended producer responsibility programs.
- Utility supported education for disposal access.
- Producers obligated to provide locations for takeback program.
- Goal to safely dispose of medications.





# Paint Takeback Program

---

- Producer Responsibility.
- Latex Paint recycling programs.
  - Oil Based can go to Household Hazardous Waste Locations.
- Education and outreach to residents.
- Relationship building with businesses & retailers.



# PaintCare™

## RECYCLING MADE EASY





# Source Tracing Inspections

- Supporting WTD Source Control
- Settled Solids Sampling and sediment traps
  - Sediment Trap Design Piloting
- Ecology and EPA coordination with CERCLA and TSCA sites
  - Supporting LDW and EWW cleanups
- Joint Inspections at target facilities





# PCB Detection Dog



- Ecology Grant to SPU
- Joint UW, FieldLab, and SPU Project
- Two dogs trained over 5 years.
- Screened in Seattle, Tacoma, Spokane
- Featured in a BBC documentary



# PFAS/PFOA Efforts

- Seattle Fire Department began alternatives research in 2003 due to environmental concerns around AFFF.
- Replacement needed to be:
  - Non-toxic, contain no reported hazardous substances
  - Non-Corrosive, compatible with existing equipment
  - Non-reactive with other Department's foams.
- Used LA County's data and field demonstrations
- Switched to Fluorine free foam after trialing a variety of alternatives.
- Uses lower quantities of foaming chemicals for the same use.





# Stormwater Source Control Programs



- Dry Weather Drainage Screening
- Line Cleaning for Water Quality
- RV Pumpout Program
- Business and Facility Inspections
- Stormwater Facility Inspections



Questions?

A decorative white torn paper edge runs horizontally across the bottom of the slide, with a jagged, irregular border that gives the appearance of a cut-out piece of paper. The rest of the slide is a solid, deep blue color.