

# Combined Sewer Overflow Program Briefing

MWPAAC

May 22, 2024



**King County**

**Protecting Our Waters**

*Doing our part on rainy days*

# Presentation topics:

- What are Combined Sewer Overflows (CSOs)?
- Overview of County's CSO System
- King County and Seattle each manage their own CSO systems
- Overview of County's CSO Long Term Control Plan and Consent Decree



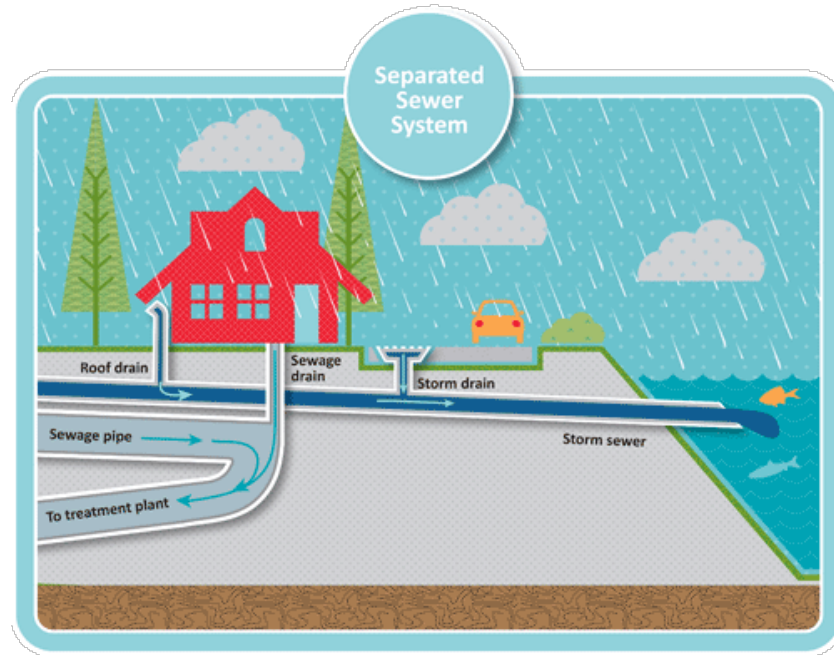
King County

**Protecting Our Waters**

*Doing our part on rainy days*

# Separated sewer system

- Separated sewer systems have separate pipes for sewage and stormwater.



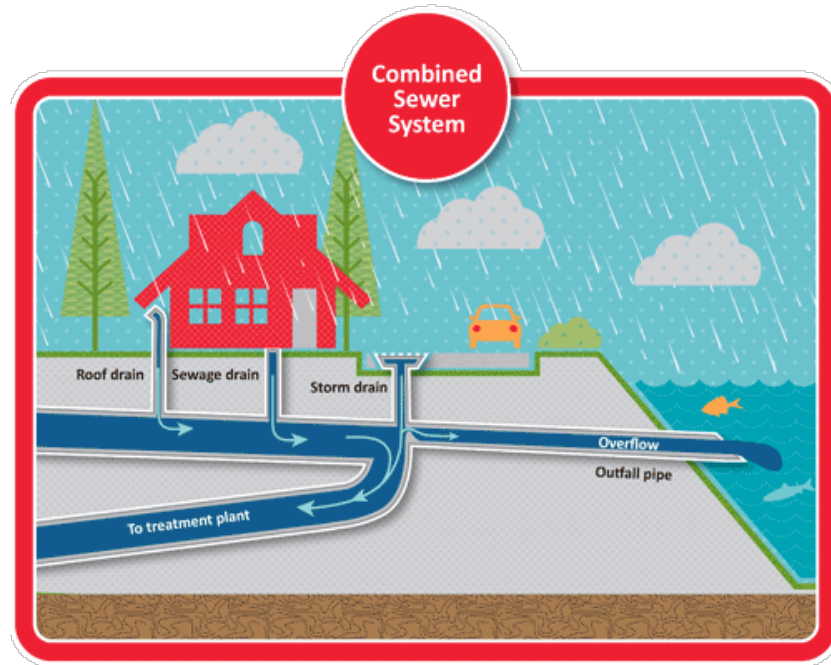
King County

Protecting Our Waters

*Doing our part on rainy days*

# What are Combined Sewer Overflows?

- CSOs are relief points in older sewer systems that carry sewage and stormwater in the same pipe.
- When heavy rains fill the pipes, CSOs protect homes and businesses by overflowing excess sewage and stormwater into local water bodies.



King County

Protecting Our Waters

*Doing our part on rainy days*

# Why is CSO Control important?

- CSOs are a recognized source of water pollution and public health concerns.
- CSOs are regulated under the Federal Clean Water Act
- Washington State requires the “greatest reasonable reduction of combined sewer overflows at the earliest possible date.” (RCW90.48.480)
- Outfalls must be controlled so that no more than one untreated discharge occurs per year on average. (WAC 173-245-20)

**WARNING:**  
Rains can cause pipe overflows and temporary pollution in this area.

To find out if you should use the water here today:

**ADVERTENCIA:**  
las lluvias pueden causar desbordes en las tuberías y contaminación temporal en esta área.  
Investigue las condiciones actuales de la calidad del agua para esta área: (Spanish)

**경고:**  
비가 내리면 이 구역에 배관 범람 및 일시적 오염이 발생할 수 있습니다.  
이 구역의 현재 수질 상태를 파악하십시오: (Korean)

**CẢNH BÁO:**  
mưa có thể gây sự cố tràn ống và ô nhiễm tạm thời trong khu vực này.  
Tìm xem thông tin về tình trạng chất lượng nước hiện tại cho khu vực này: (Vietnamese)

**警告:**  
下雨可能會使水管溢流並且造成這個地區暫時被污染。  
請查看本地區目前的水質情況: (Chinese)

206-386-1800 or TTY: 711  
[www.kingcounty.gov/CSOStatus](http://www.kingcounty.gov/CSOStatus)

CSO #: 007

King County City of Seattle



King County

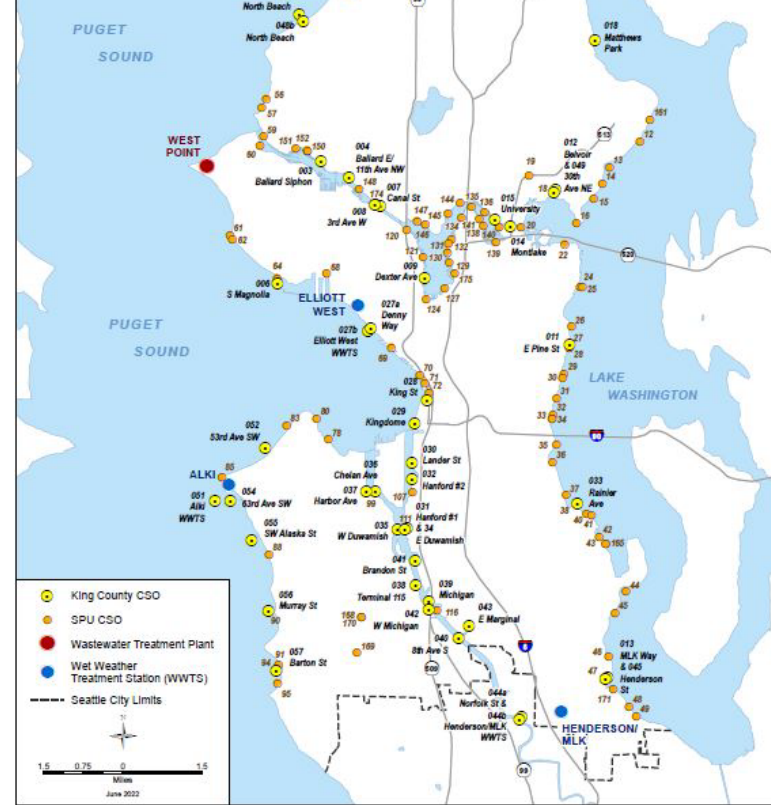
Protecting Our Waters

Doing our part on rainy days



# King County and Seattle each manage their own CSO systems

- King County has 38 CSO outfalls
- Seattle has 82 CSO outfalls
- King County and Seattle are obligated to control their CSOs to meet the state standard of one untreated discharge per year on average



King County

Protecting Our Waters

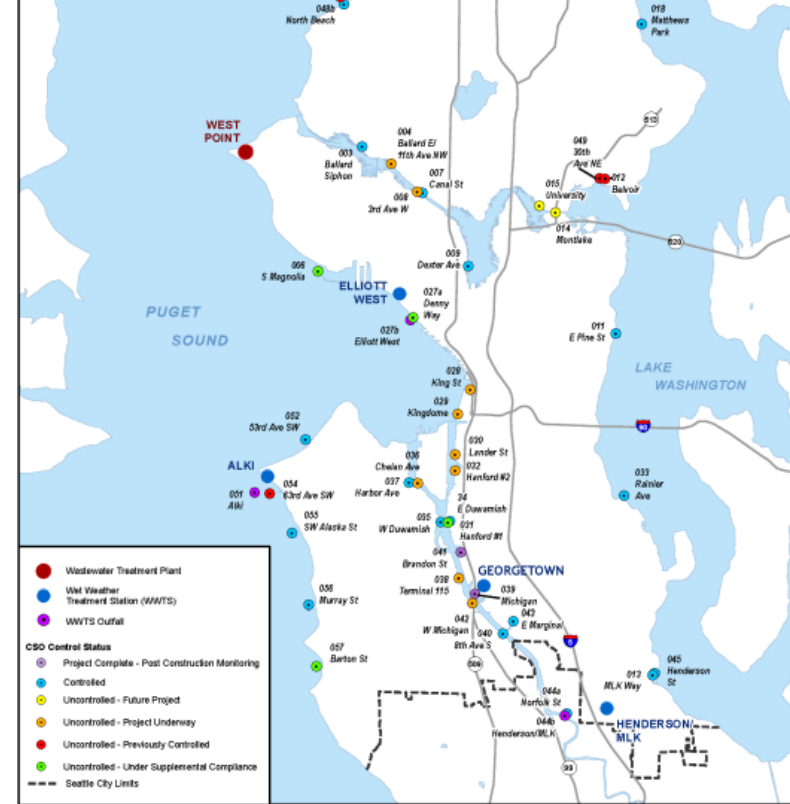
Doing our part on rainy days

# King County CSO Outfalls

- 38 CSO outfalls
  - 17 controlled
  - 10 monitoring /supplemental compliance
  - 11 uncontrolled

As of 2022 CSO Annual Report (July 2023)

- Projects complete or underway for all but 2 outfalls



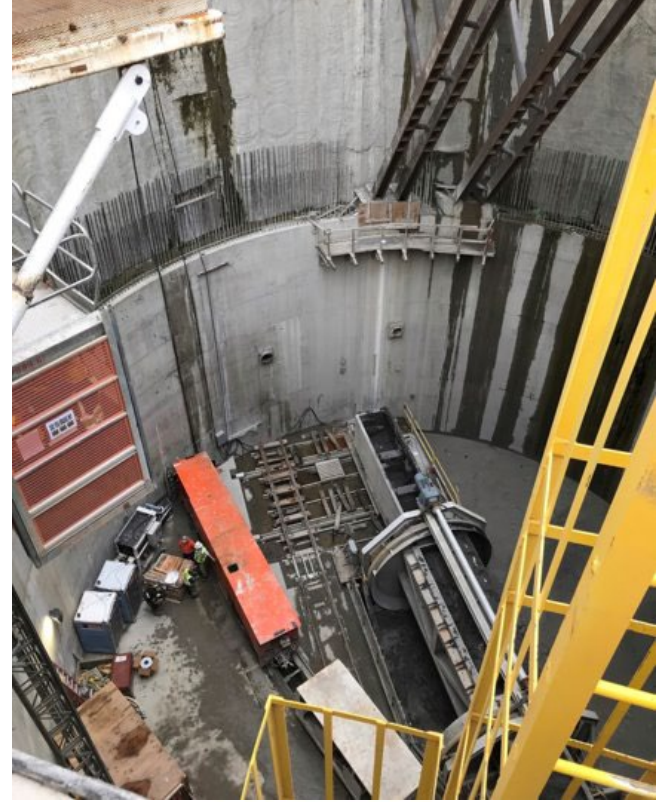
King County

Protecting Our Waters

Doing our part on rainy days

# King County CSO LTCP

- County's Long-term Control Plan (LTCP) describes how the County will meet the state requirement of achieving the greatest reasonable reduction of CSOs at the earliest possible date.
- Seattle has their own plan to control their CSO outfalls. The agencies coordinate closely and determine where collaborations benefit both systems.



King County

**Protecting Our Waters**

*Doing our part on rainy days*



# CSO Consent Decrees

- In 2013, King County and City of Seattle each signed a legal agreement with the state and federal governments to control all CSO outfalls.
  - City to control by 2025
  - County to control by 2030
- **Both County and City are in negotiations to modify the agreements.**



King County

Protecting Our Waters

*Doing our part on rainy days*

# Questions?

Janice Johnson [Janice.johnson@kingcounty.gov](mailto:Janice.johnson@kingcounty.gov)

Faon O'Connor [Faon.oconnor@kingcounty.gov](mailto:Faon.oconnor@kingcounty.gov)



King County

**Protecting Our Waters**

*Doing our part on rainy days*