

Parcel #

Resource Restoration Plan

Objective

The goal of this restoration plan is to restore 1.44 acres of the owner's 2.75 acre property to its natural state, as well as to promote stewardship of the land by providing adequate habitat for animals and birds. To achieve this goal, invasive plants – in particular, Himalayan Blackberries – will be controlled using natural methods, followed by the introduction of indigenous plants. The end result will be a renewed and lush 1.44 acres of open space with diverse native vegetation including: firs, cedars, alders, ash, vine maple, salmon berry and other indigenous species.

Current Conditions

There are multiple snags throughout the property, as well as impenetrable and invasive Himalayan blackberry bushes growing along the northern and western boundaries. Small pockets of debris from the previous owner are located amid the brush.

Maintenance

Steps to restore and maintain the property is scheduled as follows:

Year	Restoration / Maintenance Steps	Plants	Timeline	% Work Completed
1	<ul style="list-style-type: none">• Eradicate blackberry brambles:<ul style="list-style-type: none">○ Install stock fencing to contain the targeted 1.44 acre property○ Introduce five goats to "naturally" eradicate the invasive blackberry brambles (entire forest area)	Not applicable	<ul style="list-style-type: none">○ 6/1/09 – 6/25/09○ 8/1/09	<ul style="list-style-type: none">○ 100%○ 100%
2	<ul style="list-style-type: none">• Continue to eradicate blackberry brambles:<ul style="list-style-type: none">○ Reduce goat herd to three○ Monitor goat's ability to maintain blackberry control○ Plan adjustment: Install temporary cross-fencing to target specific forest areas○ Introduce 3 additional goats in NE cross-fenced area (total 6 goats)	Not applicable	<ul style="list-style-type: none">○ 4/15/10○ 4/16/10 – 8/1/10○ 9/30/10 – 10/30/10○ 10/30/10	<ul style="list-style-type: none">○ 100%○ 100%○ 0%○ 0%

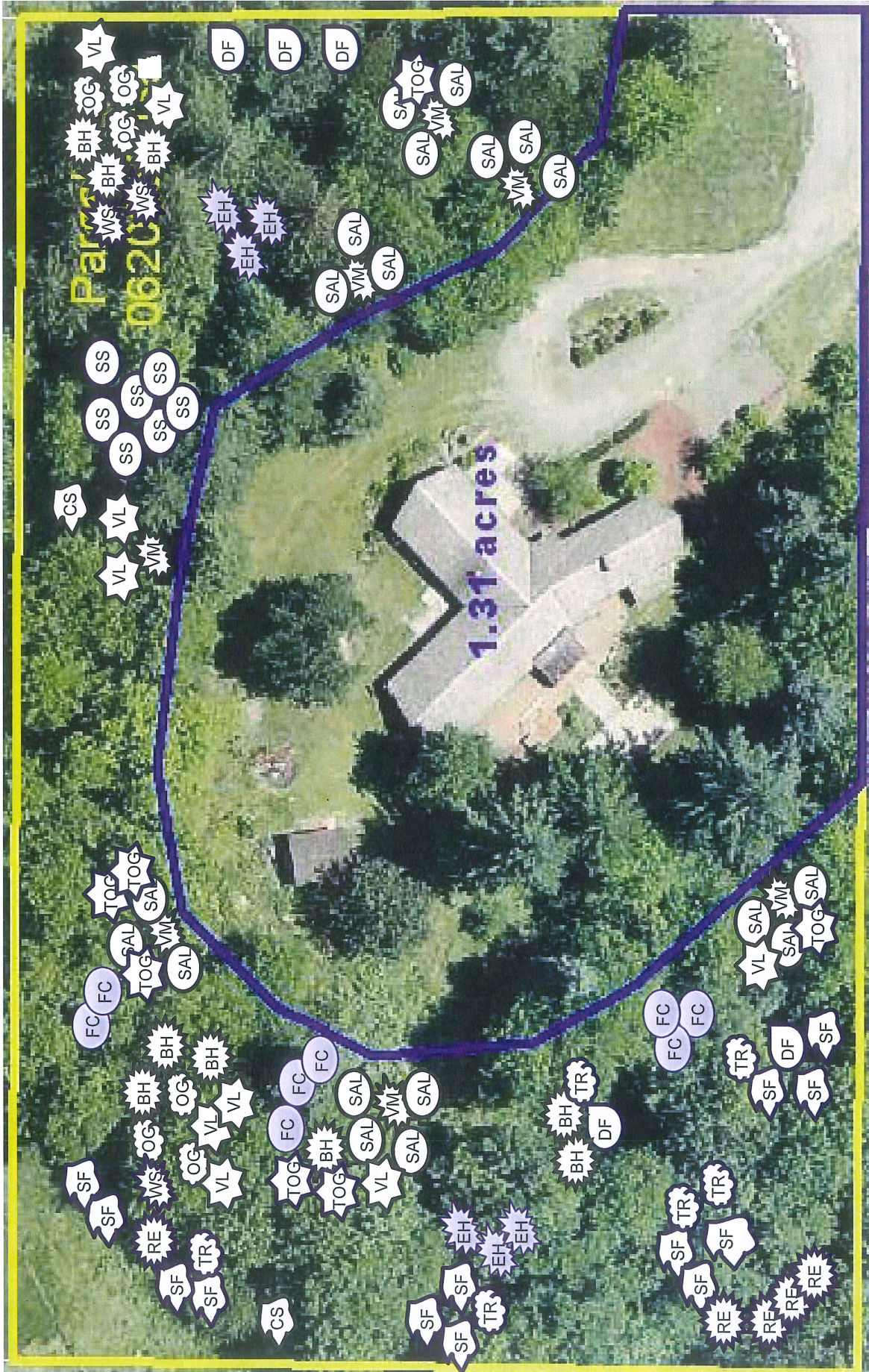
Year	Restoration / Maintenance Steps	Plants	Timeline	% Work Completed
3	• Continue to eradicate blackberry brambles:	Not applicable	○ 1/15/11	○ 0%
	○ Move goat herd to NW cross-fenced area			
	• Begin to replant NE cross-fenced area with native plants	See site map + plant list	○ 4/16/11 – 5/15/11	○ 0%
	○ Protect seedlings with wire fencing/cages		○ 4/16/11 – 5/15/11	○ 0%
	○ Hand water seedlings		○ 4/16/11 – 9/30/11	○ 0%
	• Move goat herd to W cross-fenced area		○ 5/1/11	○ 0%
	• Begin to replant NW cross-fenced area with native plants	See site map + plant list	○ 9/30/11 – 10/30/11	○ 0%
	○ Protect seedlings with wire fencing/cages		○ 9/30/11 – 10/30/11	○ 0%
	○ Hand water seedlings		○ 9/16/11 – 11/1/11	○ 0%
	4	• Begin to replant W cross-fenced area with native plants	See site map + plant list	○ 4/1/12 – 5/1/12
○ Protect seedlings with wire fencing/cages		○ 4/1/12 – 5/1/12		○ 0%
○ Hand water seedlings			○ 4/1/12 – 8/1/12	○ 0%
• Monitor blackberry control			○ 4/1/12 – 12/31/12	○ 0%
• Reduce goat herd to three			○ 10/31/12	○ 0%
5		• Complete planting of native plants – replant as needed	See site map + plant list	○ 1/1/13 – 12/31/13
	• Continue to monitor blackberry control	○ 1/1/13 – 12/31/13		○ 0%
	• Remove goat herd		○ 10/31/13	○ 0%
	• Manage residual blackberry growth manually		○ 10/31/13 – 12/31/13	○ 0%

Site Map

(see attachment – “Planting Site Map”)






Plant List

Plant Name	Type	Exposure	Soil Moisture	Height
Vine maple (<i>Acer circinatum</i>)	Tree	Part shade-shade	Dry-moist	25 ft
Cascara (<i>Rhamnus purshiana</i>)	Tree	Sun-shade	Dry-wet	30 ft
Salal (<i>Gaultheria shallon</i>)	Shrub	Part shade-shade	Dry-moist	5 ft
Low Oregon grape (<i>Mahonia nervosa</i>)	Shrub	Part shade-shade	Dry-moist	5 ft
Snowberry (<i>Symphoricarpos albus</i>)	Shrub	Sun-shade	Dry-moist	5 ft
Vanilla leaf (<i>Achlys triphylla</i>)	Ground cover	Part shade-shade	Dry-moist	1 ft
Bleeding heart (<i>Dicentra formosa</i>)	Ground cover	Part shade-shade	Dry-moist	1.5 ft
Oxalis; wood sorrel (<i>Oxalis oregano</i>)	Ground cover	Part shade-shade	Dry-moist	3 ft
Sword fern (<i>Polystichum munitum</i>)	Ground cover	Part shade-shade	Dry-moist	3 ft
False Solomon's-seal (<i>Smilacina racemosa</i>)	Ground cover	Part shade-shade	Dry-moist	3 ft
Trillium (<i>Trillium ovatum</i>)	Ground cover	Part shade-shade	Dry-moist	1.5 ft
Douglas-fir (<i>Pseudotsuga menziesii</i>)	Tree	Sun-part shade	Dry-moist	250 ft
Tall Oregon grape (<i>Mahonia aquifolium</i>)	Shrub	Sun-shade	Dry-wet	8 ft
Red elderberry (<i>Sambucus racemosa</i>)	Shrub	Sun-shade	Dry-moist	15 ft
Evergreen huckleberry (<i>Vaccinium ovatum</i>)	Shrub	Part shade-shade	Dry-moist	6 ft
Fringecup (<i>Tellima grandiflora</i>)	Ground cover	Part shade-shade	Moist	1 ft



Palm
0020

1.31 acres

-  Vine Maple
-  Cascara
-  Salal
-  Low Oregon Grape
-  Snowberry
-  Vanilla Leaf
-  Bleeding Heart
-  Wood Sorrel
-  Sword Fern
-  Solomon's Seal
-  Trillium
-  Douglas Fir
-  Tall Oregon Grape
-  Red Elderberry
-  Evergreen Huckleberry
-  Fringecup