

# 2020 Strategic Climate Action Plan (SCAP)

King County Agriculture Commission

December 9, 2021

Matt Kuharic, Senior Climate Program Manager

[Matt.Kuharic@kingcounty.gov](mailto:Matt.Kuharic@kingcounty.gov)

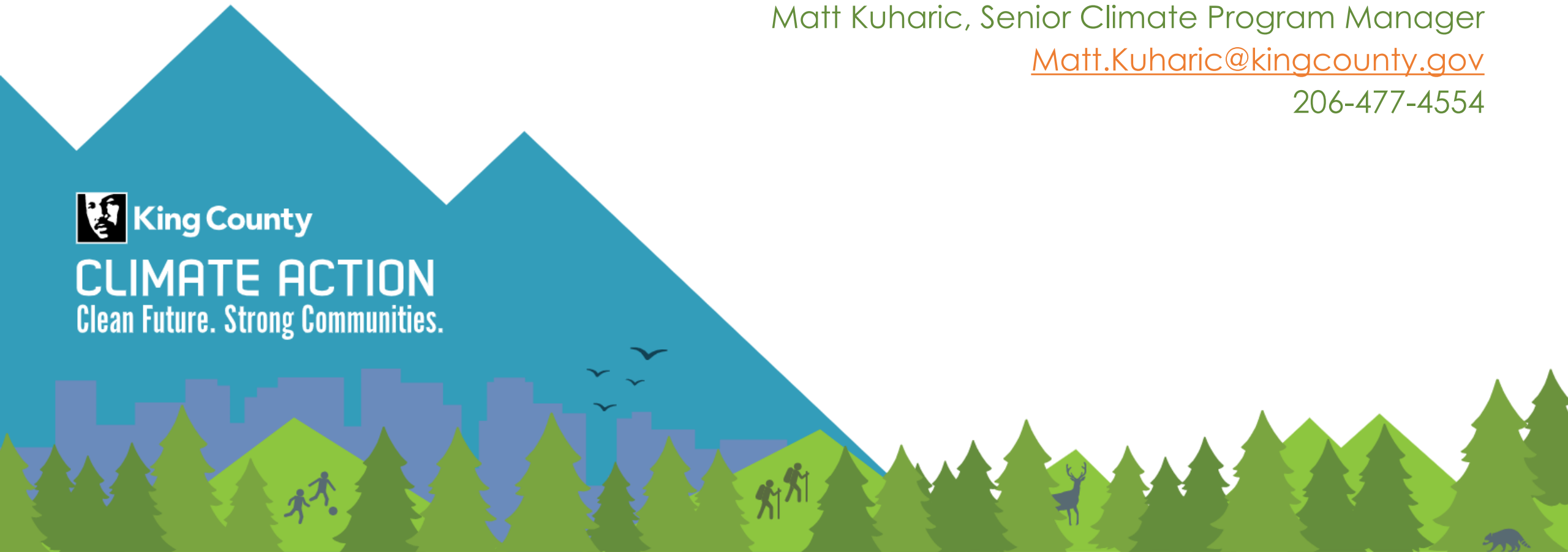
206-477-4554



King County

CLIMATE ACTION

Clean Future. Strong Communities.



# What is the SCAP?

- Developed in 2019 and early 2020 – public input through multiple methods
- Adopted May 2021; next update will occur in 2024 with adoption in 2025
- SCAP is the guiding policy document for County climate action
- Thank you for the letter of support and constructive feedback on the 2020 SCAP!!
- More opportunity for input and partnership in implementing the 2020 SCAP's commitments and in shaping future SCAPs



# SCAP 2020 Goals and Vision

## Reducing GHG Emissions

### GOALS

*Reduce Countywide emissions **50% by 2030;**  
**80% by 2050***

*Reduce King County government operational emissions **50% by 2025;**  
**80% by 2030***

## Sustainable & Resilient Frontline Communities

### VISION

*Frontline communities are centered in developing climate solutions and have the knowledge, skills, resources, capacity, and social political capital to equitably **adapt, lead, and thrive in a changing climate.***

## Preparing for Climate Impacts

### VISION

*King County creates, supports, and implements policies and actions that reduce climate change vulnerabilities equitably and **increase the resilience of King County communities, natural systems, and the built environment.***



# Transportation

- Develop walkable urban centers near transit
- Drive less – sustain and increase transit
- Electrify cars, buses, trucks
- Build electric vehicle charging infrastructure

# The Built Environment

---

- Make buildings efficient and fossil fuel free
- Build high performance homes and facilities that use less energy and provide cleaner indoor air
- Reduce waste in construction
- Increase clean, renewable energy sources
- Implement the highest green building standards in County projects



# The Natural Environment

---

- Plant, Protect and Prepare 3 Million Trees by 2025
- Protect remaining high conservation value lands in King County - for recreation, habitat, equity, and carbon
- Preserve farms and support farmers
- Restore our forests and Implement the 30 Year Forest Plan



# What We Buy and Use

---

- Reduce use and waste of products
- Use products with low(er) carbon impacts
- Eliminate food waste
- Enhance recycling



# Energy and Reliability

The SCAP includes goals and priority actions for a more integrated, resilient power system. However, the County has limited direct roles in the local energy systems.

Local utilities such as Puget Sound Energy are regulated by the Washington State Utilities and Transportation Commission.

However, the SCAP includes the following Priority Actions:

- **Advocate for increased grid reliability through state and utility regulatory rulemaking and legislation** that supports demand response and storage technologies that reduce peak load and provide grid flexibility. (GHG 3.8.2)
- **Partner through the K4C and with utilities to develop a package of local jurisdictional commitments and initiatives that support renewable and distributed energy sources that direct the region toward a robust and resilient utility system.** Actions include supporting community solar development, green power community challenges, streamlined local renewable energy installation permitting, district energy, code development, and renewable energy incentives. (GHG 3.9.1)

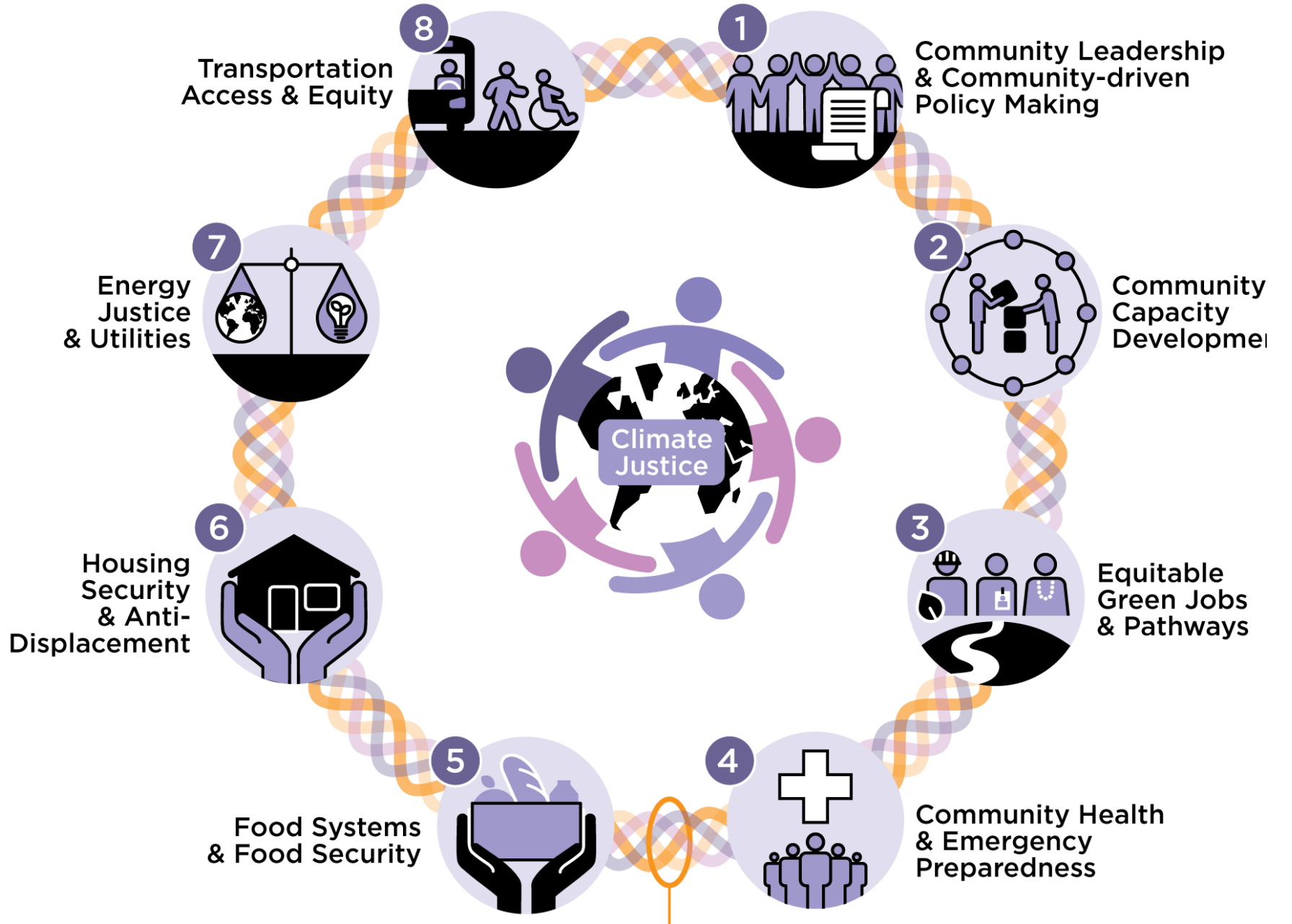


# Clean Fuels

---

- In 2021, a Washington State [Clean Fuels Standard](#) (HB 1091) law was adopted, with a goal to reduce GHGs of transportation fuels (i.e. gasoline and diesel) by 10% by 2028 and 20% by 2035
  - *Dyed special fuel used for agricultural purposes is exempt from these requirements*
- No other clean fuels standards are in development (such as by the Puget Sound Clean Air Agency)

# Sustainable & Resilient Frontline Communities Section



# Preparing for Climate Impacts

---

- Equitably reduce the harmful effects of climate change
- Range of risks addressed: flooding, sea level rise, wildfire, hotter summer temperatures, stormwater



# 2020 Strategic Climate Action Plan (SCAP)

King County Agriculture Commission

December 9, 2021

Matt Kuharic, Senior Climate Program Manager

[Matt.Kuharic@kingcounty.gov](mailto:Matt.Kuharic@kingcounty.gov)

206-477-4554



King County

CLIMATE ACTION

Clean Future. Strong Communities.

