

# Dutchman Road Revetment Repair Project

## SELECTED ALTERNATIVE SUMMARY REPORT

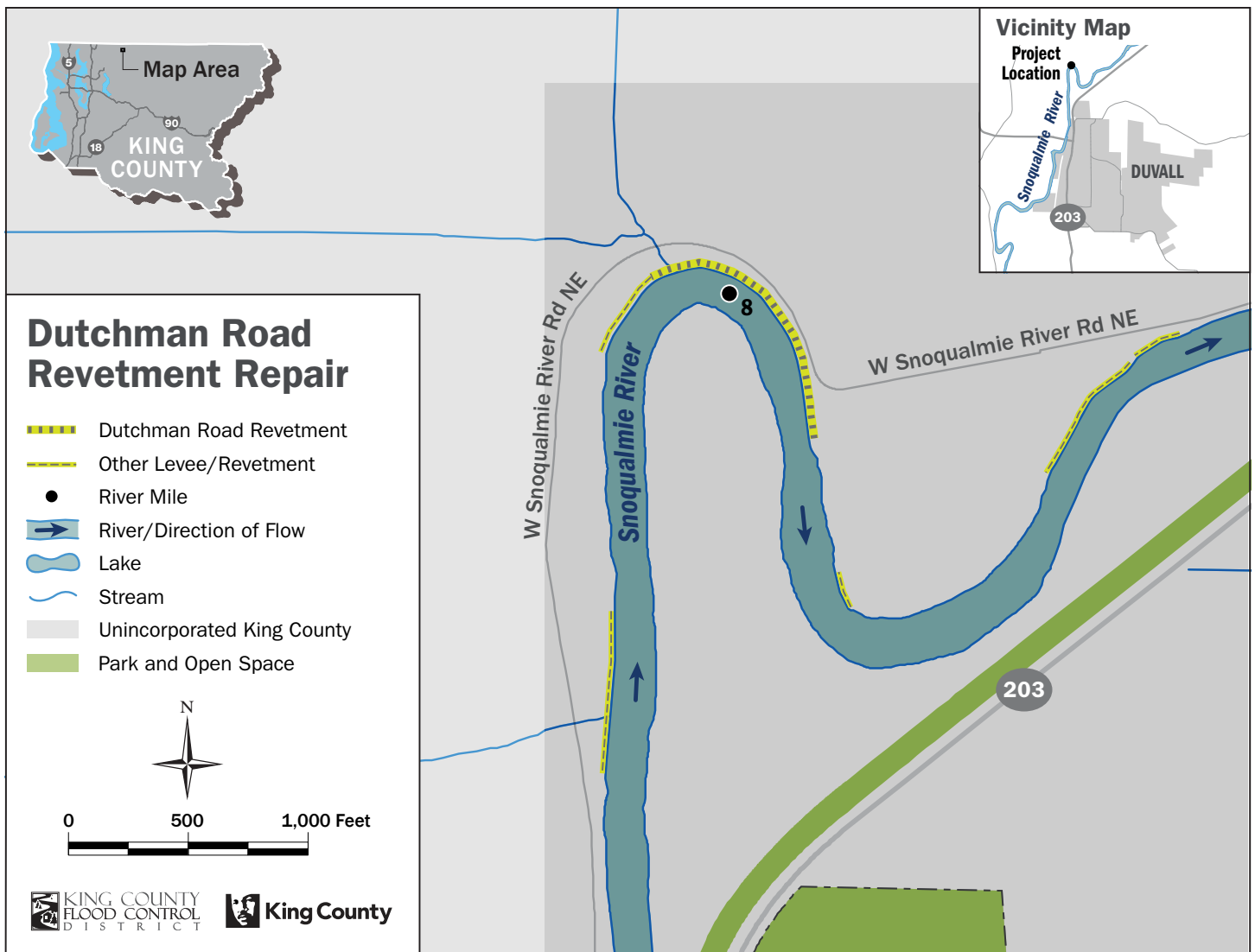
December 2024



# PROJECT OVERVIEW

The Dutchman Road Revetment is located on the north bank of the Snoqualmie River, about one mile downstream of the Northeast Woodinville Duvall Road Bridge. (Figure 1). In recent years, high river flows have damaged parts of the revetment causing a safety risk (Figure 2). The riverbank could erode further and damage West Snoqualmie River Road Northeast.

The King County Flood Control District together with King County, as service provider, plan to repair the damaged areas of the revetment as well as remove a damaged culvert in the summer of 2026. This repair project will reduce flood and riverbank erosion risks to property, local utilities, and West Snoqualmie River Road Northeast.



The use of the information in this map is subject to the terms and conditions found at: [kingcounty.gov/services/gis/Maps/terms-of-use.aspx](http://kingcounty.gov/services/gis/Maps/terms-of-use.aspx). Your access and use is conditioned on your acceptance of these terms and conditions. Data: King County GIS. File: KCIT DCE 2106\_11587w\_RFMS\_dutchman\_map.ai

Figure 1. Dutchman Road Revetment Location and Vicinity Map



Figure 2. Damages to revetment

## SELECTED PROJECT ALTERNATIVE

King County evaluated several conceptual design alternatives that would address the damaged revetment and drainage infrastructure as part of a planning process known as an alternatives analysis. The King County Flood Control District selected an alternative to repair the revetment in December 2023. The selected alternative will repair damages at three locations along the revetment (*Figures 2 and 3*). Additionally, King County will remove a damaged culvert through the revetment that is a barrier to fish passage and construct a small alcove area. The alcove will provide refuge for young salmon and other fish. Rock and logs will protect the alcove from erosion (*Figure 3*).

Additional technical details about the project can be found in the *Dutchman Road Repair Alternatives Analysis Report*, which is available at [kingcounty.gov/dutchmanrepair](http://kingcounty.gov/dutchmanrepair).

## PROJECT GOALS ARE TO:



Repair damage and improve stability of the revetment to reduce bank erosion and flood risks.



*Example of a river revetment.*



Conduct repair in a timely manner to prevent more expensive emergency repairs and long-term maintenance needs.



*2019 revetment repair on the Snoqualmie River downstream from Stossel Bridge.*



Improve habitat for salmon and other fish and wildlife.



*Chinook smolt (juvenile salmon).*

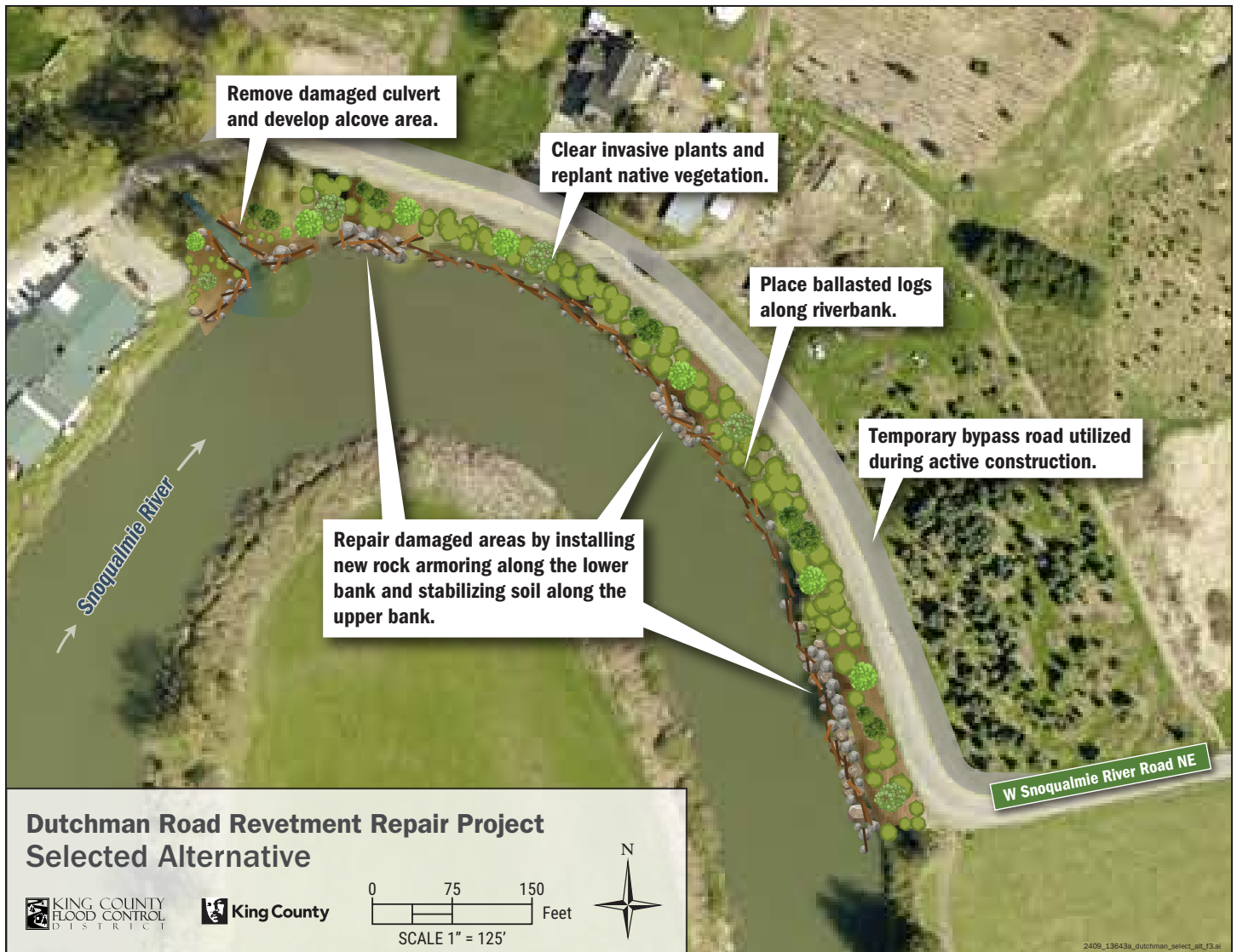


Figure 3. Dutchman Road Revetment Repair Project selected project alternative—key project elements

## CONSTRUCTION IMPACTS

King County is working to limit the impacts of construction. Construction may temporarily impact use of West Snoqualmie River Road Northeast, specifically the portion of road adjacent to the construction areas noted in Figure 3. The road will remain open but may have restricted lane access and a bypass road during construction. Flaggers and signage will be utilized to help with traffic flow and safety. We will update the project webpage as the project moves through design and permitting and we will notify local businesses and residents before construction.



*Looking east and up the Snoqualmie River at the Dutchman Road Revetment Repair Project Site.*

## **NEXT STEPS AND PUBLIC INPUT**

We would like to hear from you. If you would like to provide feedback on the selected alternative or have questions about the project, please contact **Seth Ballhorn**, [sballhorn@kingcounty.gov](mailto:sballhorn@kingcounty.gov), 206-666-0124.

Comments received by Jan. 31, 2025 will be considered during the next phase of design.

The final design is expected to be completed in 2025, and construction is tentatively planned for the summer of 2026.

Translation services and alternate formats available.

Call 206-666-0124 or TTY:711