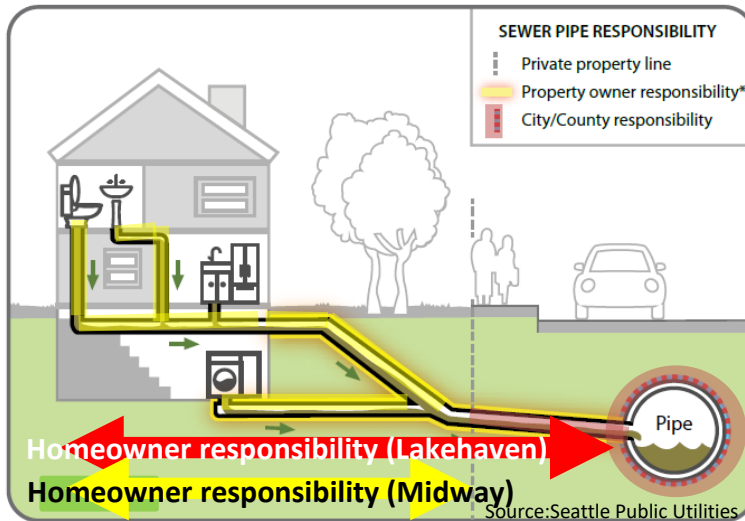


# Poverty Bay Side Sewer Repair Rebate Program



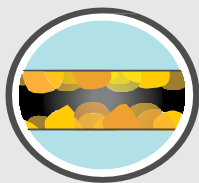
## Where is my side sewer?

A “side sewer” is a privately-owned sewer pipe that carries wastewater from a building’s sinks, drains, and toilets to the public sewer mainline. If you own your home or building, you own your side sewer up until it connects to the sewer pipe.



## Side sewer issues can be a health risk for you and your family

Sewage contains harmful bacteria, viruses, or pathogens that may pose a threat to the health of your family. Properly working side sewers (without cracks or clogging) ensure sewage does not leak outside the pipe. Side sewer issues may be caused by:



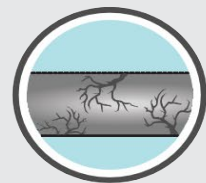
**Cooking oil and grease** from food preparation build-up in pipes.



**Tree and shrub roots** grow into cracks or holes—especially in older pipes.



**Debris**, such as flushed trash or other non-degradable materials, build up to cause clogging.



**Old age** – slumping, shifting joints, or antiquated materials can all result in side sewer issues.

Source: Seattle Public Utilities

## Save up to \$5,000 when you have your side sewer repaired for:

- ✓ **Disconnecting roof downspouts or sump pumps from your side sewer**
- ✓ **Lining leaking side sewer pipes**
- ✓ **Capping a side sewer cleanout**

If you are a customer of Midway or Lakehaven Sewer Districts, apply for the rebate at [www.kingcounty.gov/picrebates](http://www.kingcounty.gov/picrebates)  
Contact [picrebates@kingcounty.gov](mailto:picrebates@kingcounty.gov) for questions