

Molasses Creek Fish Barrier and Habitat Improvement Study



King County


DNRP/WLRD/SWS

Background

- ▶ 1,200-foot pipe system carrying Molasses Creek
- ▶ Pipes located 15-25 feet below ground surface
- ▶ Pipes installed in 1976 or before
- ▶ Piped system is a fish barrier



Problem Statement

- ▶ The pipe in Fairwood is aging and has required maintenance and repairs
 - ▶ State permits require repairs on the pipe to include fish passage, which means repairing the pipe and keeping the creek underground is not permissible
 - ▶ A study was commissioned to explore long-term solutions to replace the pipe system and meet permitting requirements
- 

Feasibility Study

3 Alternatives

- ▶ **Alternative 1: Status Quo Continue Inspection & Monitoring**
- ▶ Alternative 2: Daylight Stream along Current Alignment
- ▶ Alternative 3: Daylight Stream along Historical Alignment

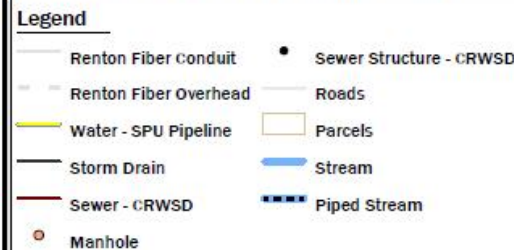
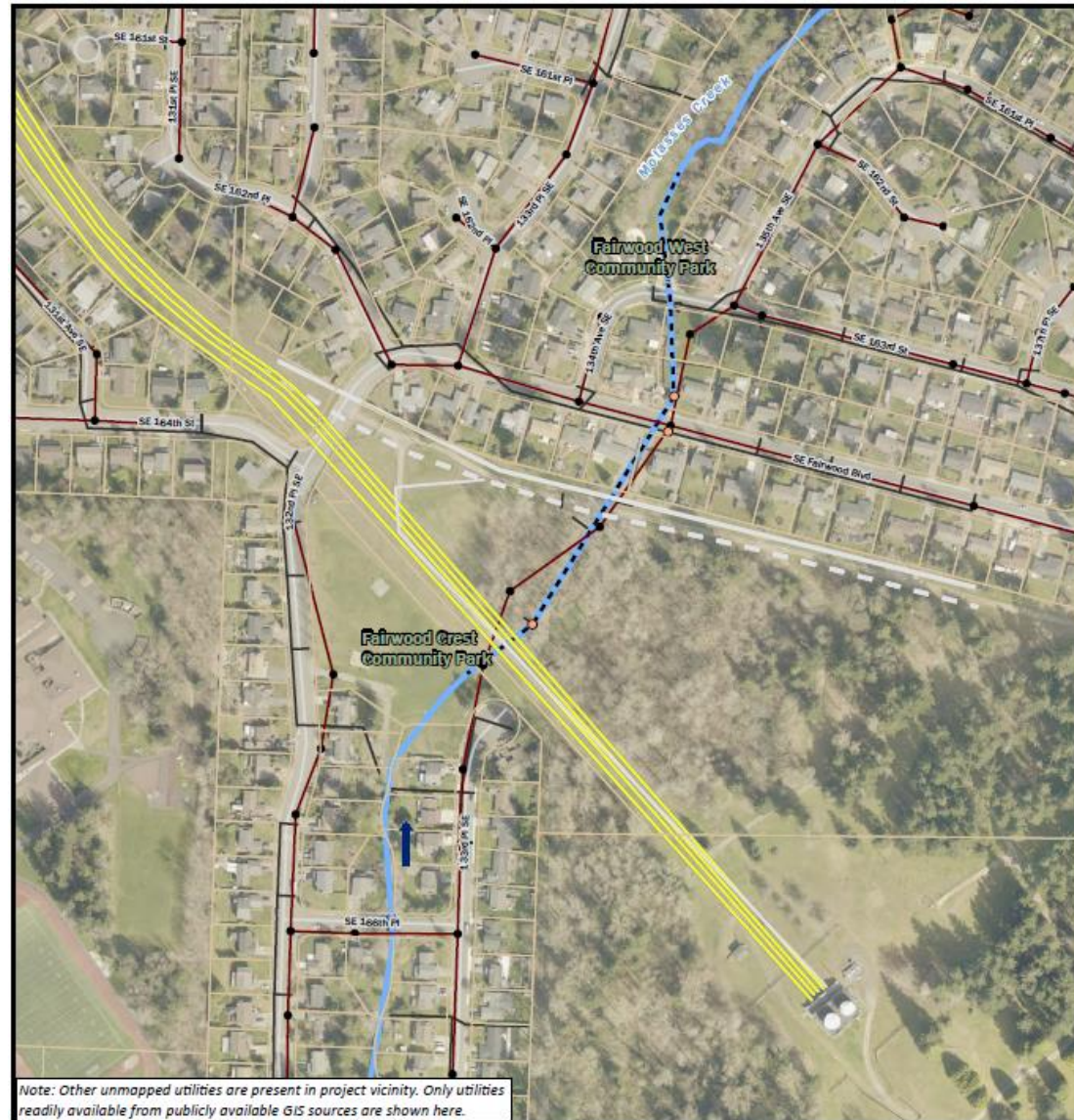


Figure 4.
Alternative 1 - Status Quo Site Plan.

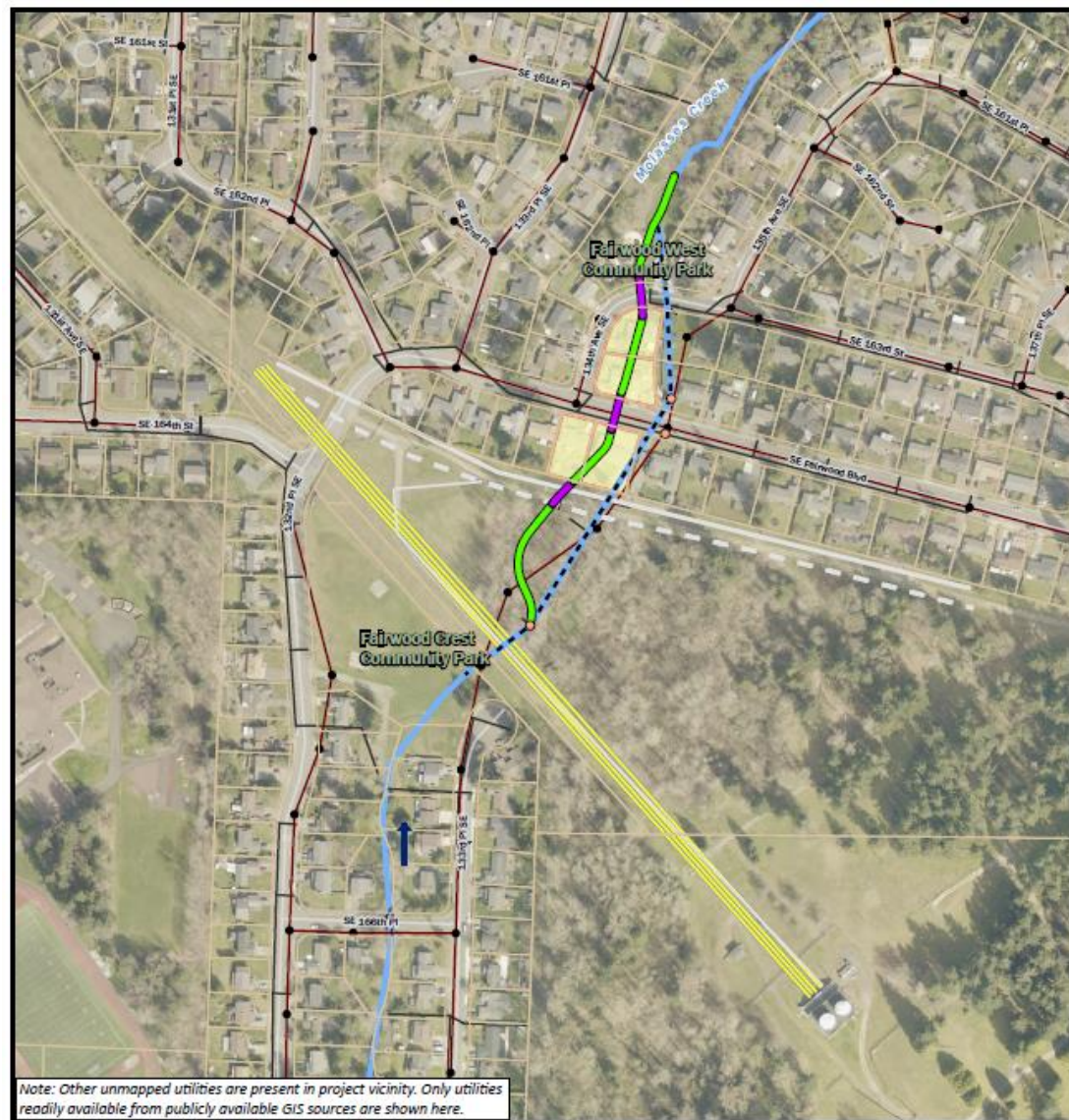


HERRERA
Science + Planning + Design

Feasibility Study

3 Alternatives

- ▶ Alternative 1: Status Quo Continue Inspection & Monitoring
- ▶ **Alternative 2: Daylight Stream along Current Alignment**
- ▶ Alternative 3: Daylight Stream along Historical Alignment



Note: Other unmapped utilities are present in project vicinity. Only utilities readily available from publicly available GIS sources are shown here.

Legend

Renton Fiber Conduit	Roads
Renton Fiber Overhead	Parcels
Water - SPU Pipeline	Potential Parcel Acquisition
Storm Drain	Stream
Sewer - CRWSD	Piped Stream
Manhole	Proposed Fish-passable Crossing
Sewer Structure - CRWSD	Proposed Daylighting

Figure 5.
Alternative 2 - Current Alignment Daylighting
Site Plan.



0 125 250 500
Feet

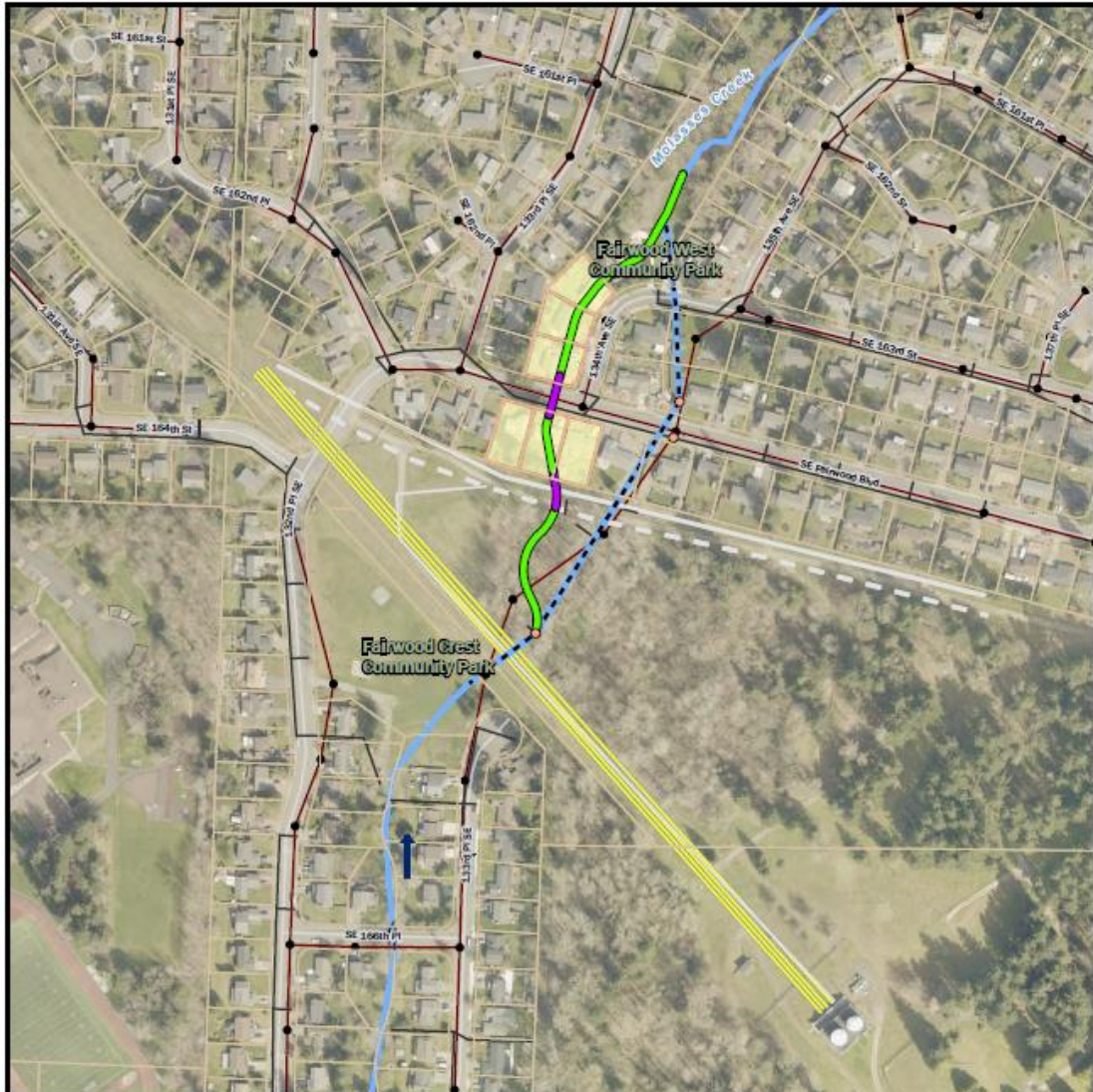


City of Renton 2022 (file; water; sewer; storm); King County 2022 (stream; roads; parcels; sewer) (2022)
K:\Project\73121\2007613\GIS\PRO\Utilities_GIS\water\Utilities_Alt2\alt2_site_plan.aprx | 1/16/2022

Feasibility Study

3 Alternatives

- ▶ Alternative 1: Status Quo Continue Inspection & Monitoring
- ▶ Alternative 2: Daylight Stream along Current Alignment
- ▶ **Alternative 3: Daylight Stream along Historical Alignment**



Note: Other unmapped utilities are present in project vicinity. Only utilities readily available from publicly available GIS sources are shown here.

Legend

Renton Fiber Conduit	Roads
Renton Fiber Overhead	Parcels
Water - SPU Pipeline	Potential Parcel Aquisition
Storm Drain	Stream
Sewer - CRSWD	Piped Stream
Manhole	Proposed Fish-passable Crossing
Sewer Structure - CRWSD	Proposed Daylighting

Figure 6.
Alternative 3 - Historical Alignment
Daylighting Site Plan.

0 125 250 500 Feet

HERRERA
Science • Planning • Design

City of Renton 2022 (DBA, water, sewer, storm); King County 2022 (stream, roads, parcels, aerial) (2021.0)
R:\Projects\73221\2017\153\03\PHD\W\Images_Utilities\W\Images_Utilities.apr\Figure6.dwg

Next Steps

Alternative 1 – Status Quo

- ▶ Proactive inspection and maintenance of pipe system
- ▶ Emergency Response – if needed
- ▶ Work with State, Tribal, and community partners on longer term solution
- ▶ Explore funding source for taking steps toward daylighting creek



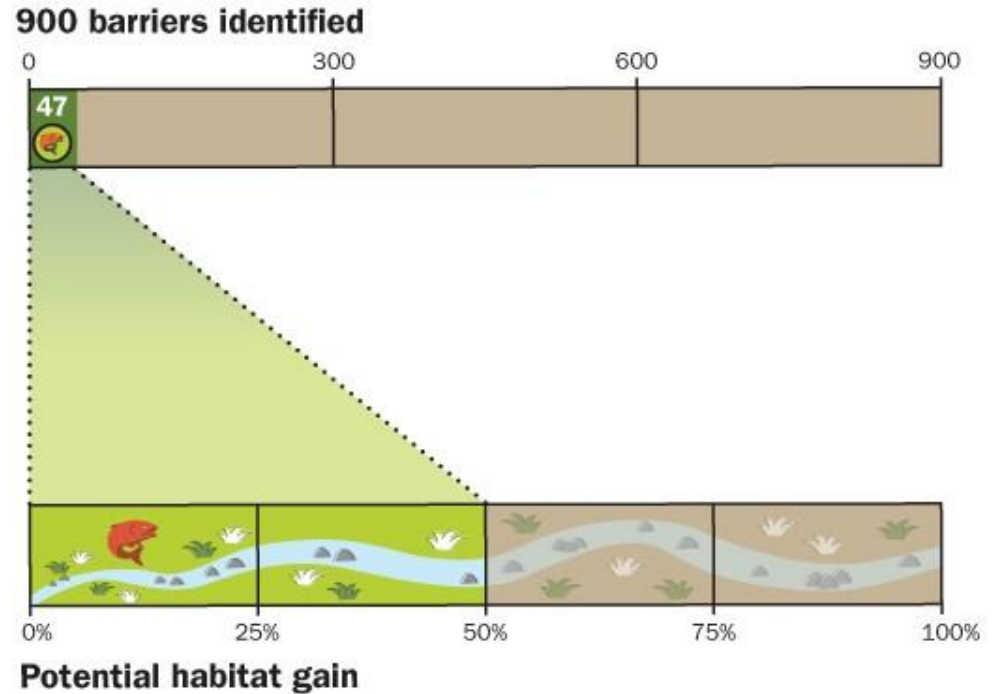
FISH PASSAGE RESTORATION PROGRAM

 **King County**
Department of Natural Resources and Parks
Water and Land Resources Division



Prioritizing fish passage projects to get the most salmon to the best habitat as quickly as possible.

Of the ~900 county barriers the county owns, restoring fish passage at ~5% of them will provide 50% of the total possible habitat gain.



2032 GOAL: Complete enough fish passage projects to restore salmon access to at least half the habitat blocked by county barriers.

Contact Information

King County's Stormwater Services Section

Report problems to:

(206) 477-4811

stormwater@kingcounty.gov

Questions about the report:

Rachel Berryessa (206) 477-4644

rachel.berryessa@kingcounty.gov

Interested in selling your property:

Wes Chin (206) 477-4662

wes.chin@kingcounty.gov