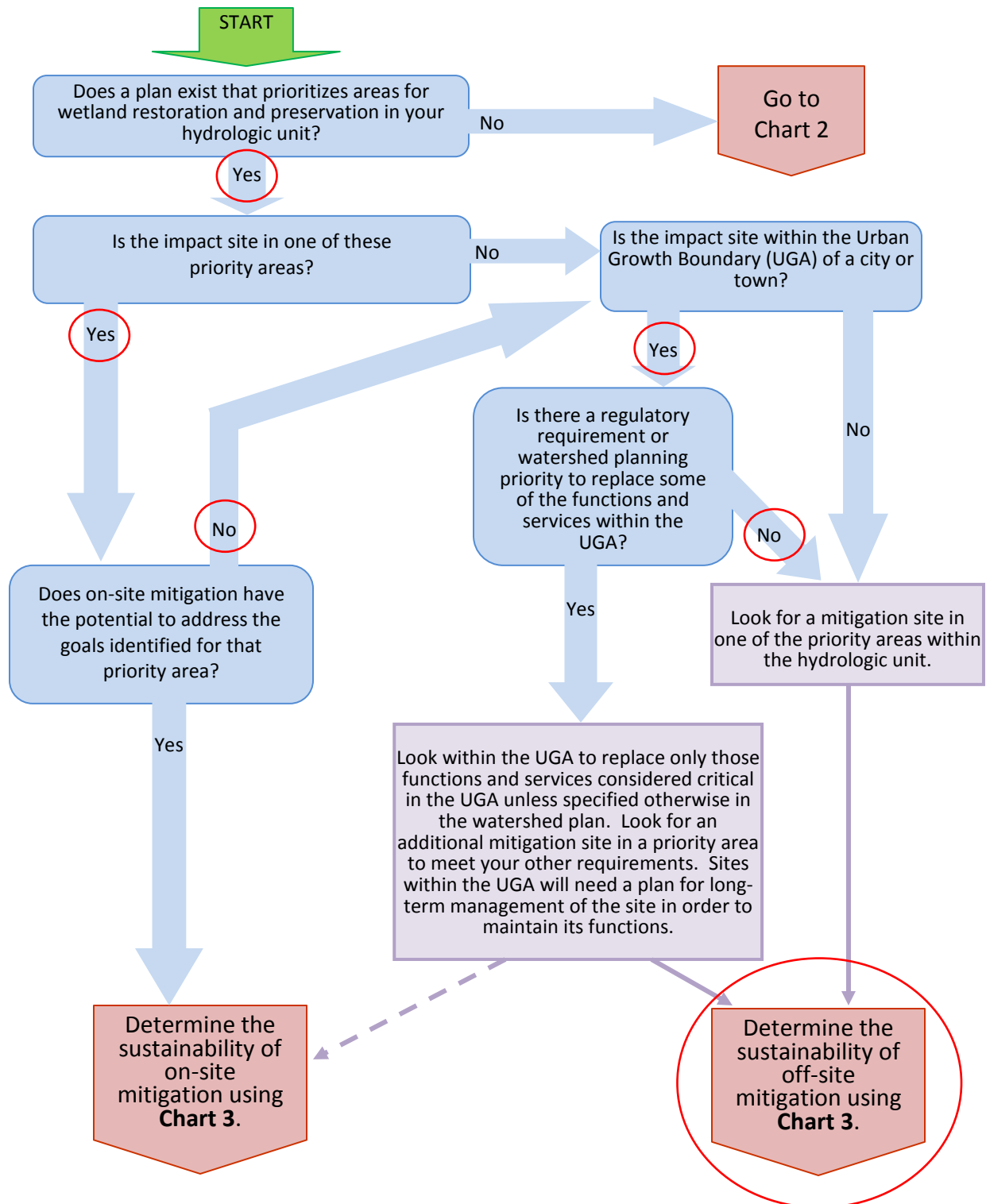
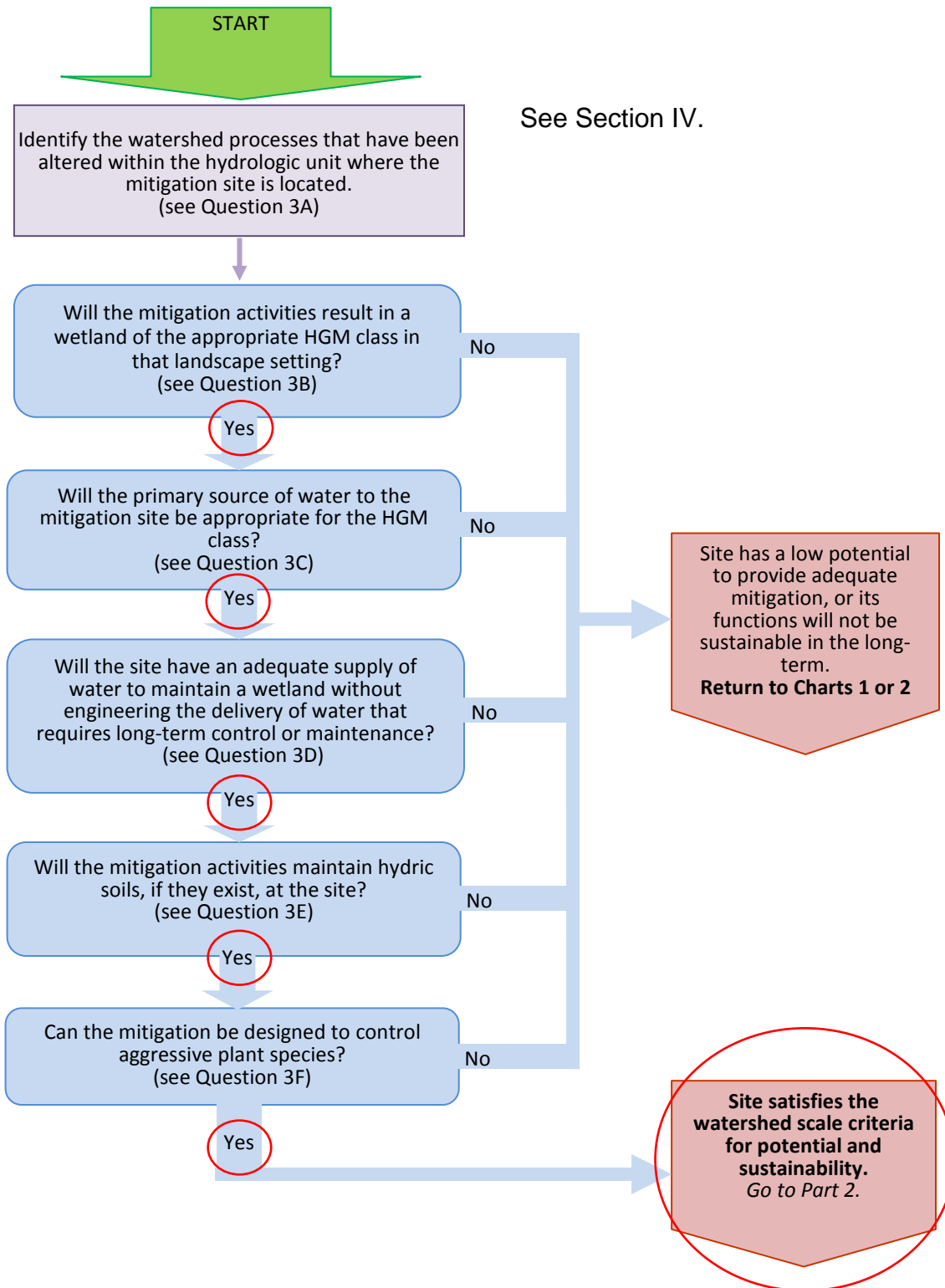


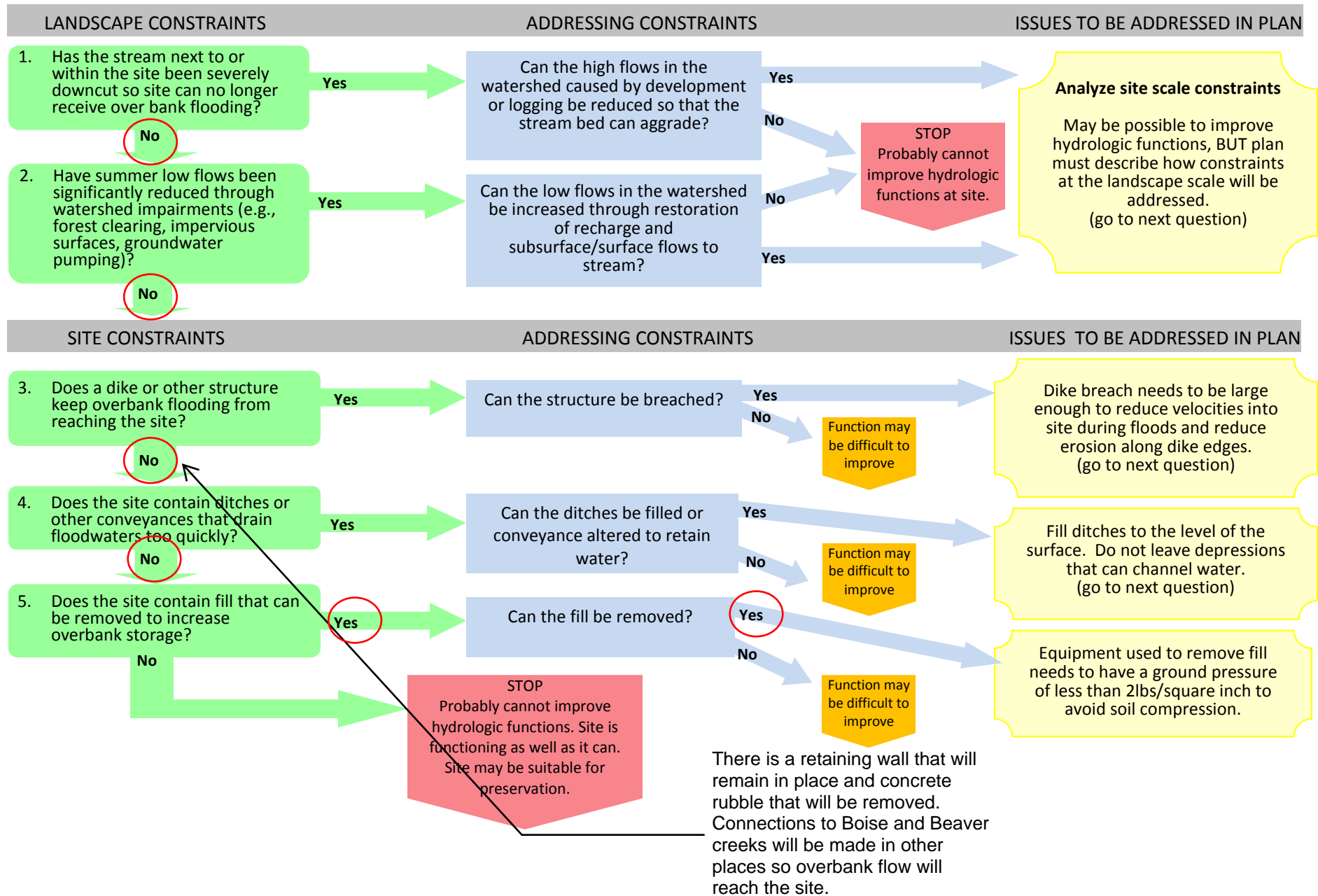
**Chart 1: Analyzing Potential Wetland Mitigation Sites Using Existing Watershed Plans**



**Chart 3: Analyzing the Potential of Sites to Provide Sustainable Mitigation in a Watershed Context**

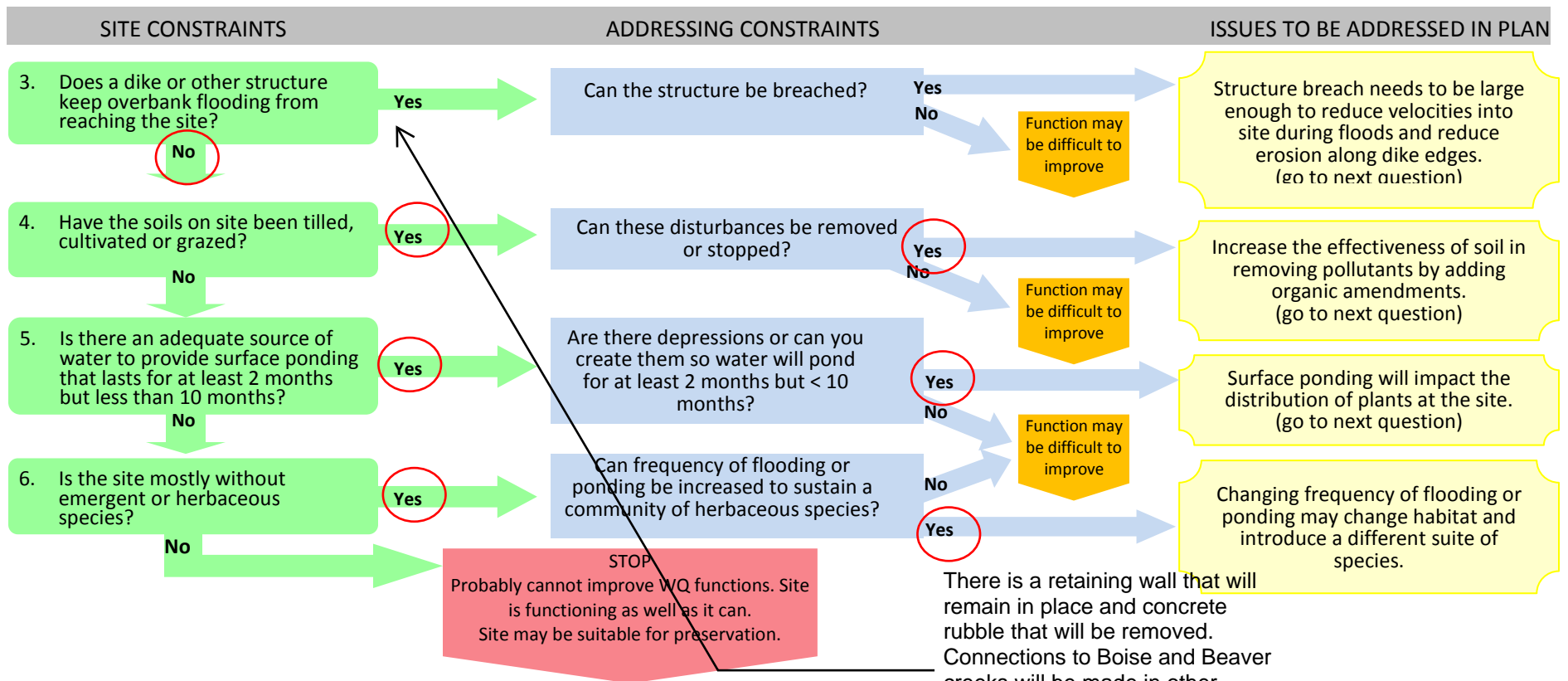
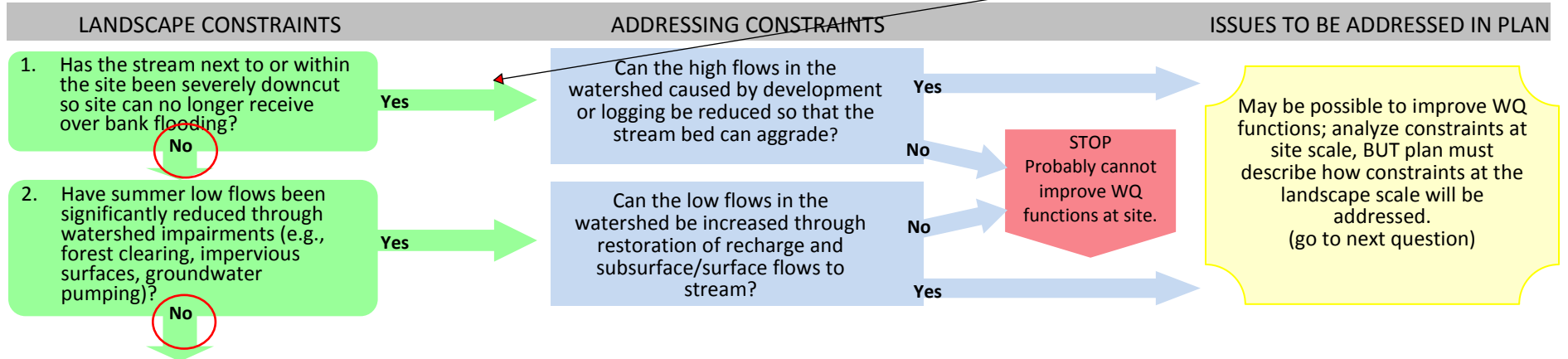


## Chart 4: Goal – Improving Hydrology Functions in Riverine/Floodplain Systems



**Chart 6: Goal - Improving Water Quality (WQ) Functions in Riverine/Floodplain Systems**

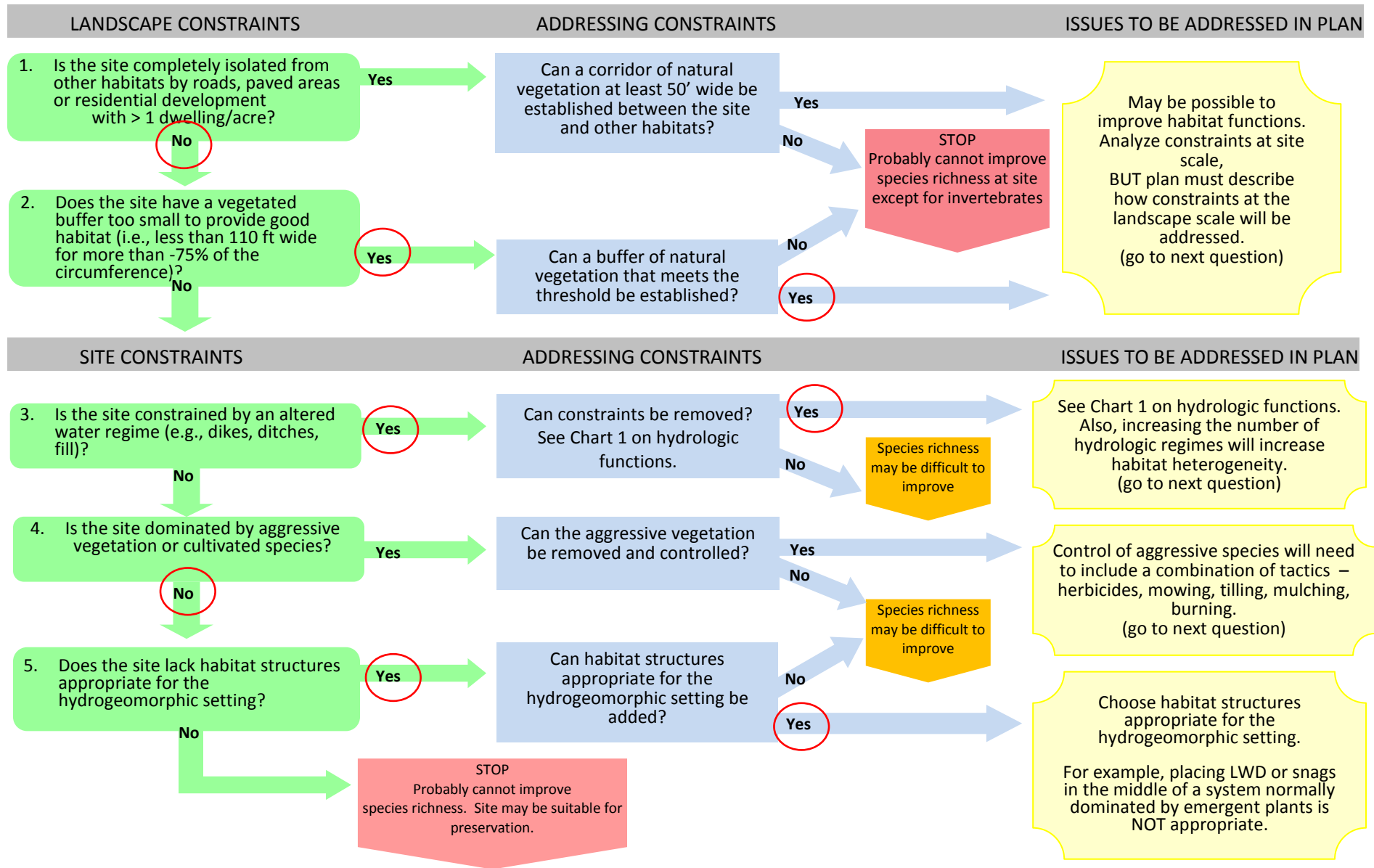
Not severely downcut, but site is upland. Connections will be made and wetland re-established to allow overbank flow. Modeling shows significant overbank flow during 2-year storm.



**STOP**  
Probably cannot improve WQ functions. Site is functioning as well as it can. Site may be suitable for preservation.

There is a retaining wall that will remain in place and concrete rubble that will be removed. Connections to Boise and Beaver creeks will be made in other places so overbank flow will reach the site.

**Chart 10: Goal - Improving Species Richness of Wildlife**



**Chart 11: Goal - Improving Species Richness of Plants**

