



2026-2031 King County Parks Replacement Levy

King County Parks & Recreation Division
Department of Natural Resources & Parks



King County

PARKS

Your Big Backyard

This levy renewal is designed to

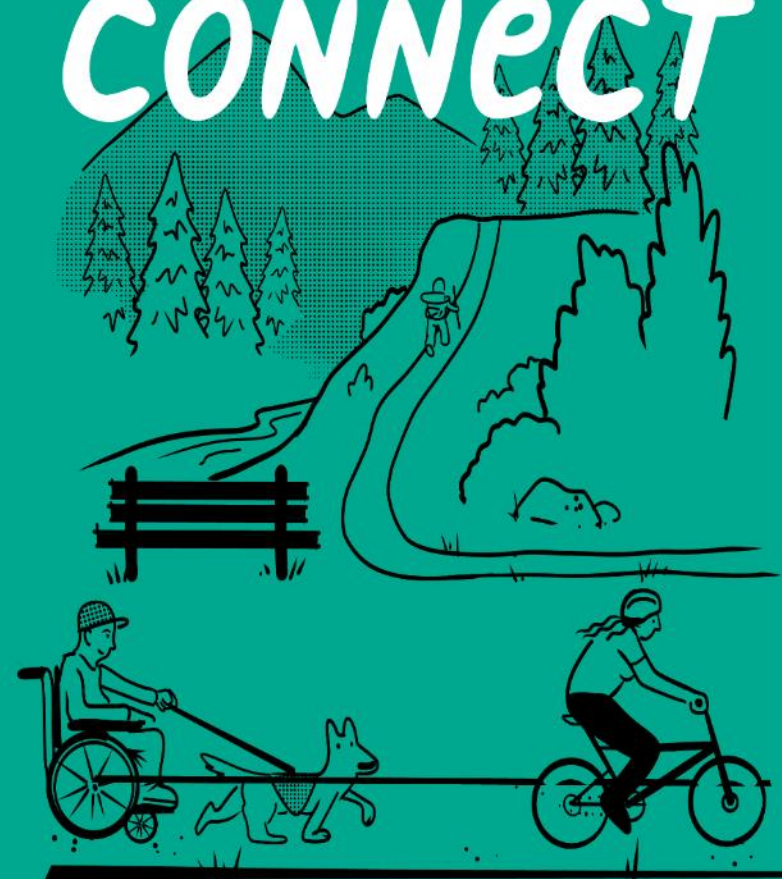
MAINTAIN



ENHANCE



GROW + CONNECT



Parks Levy Rate and Investments

Levy renewal rate

23.29¢ for every \$1,000 of assessed value

What would a homeowner pay?

For a median-valued home (\$844,000):



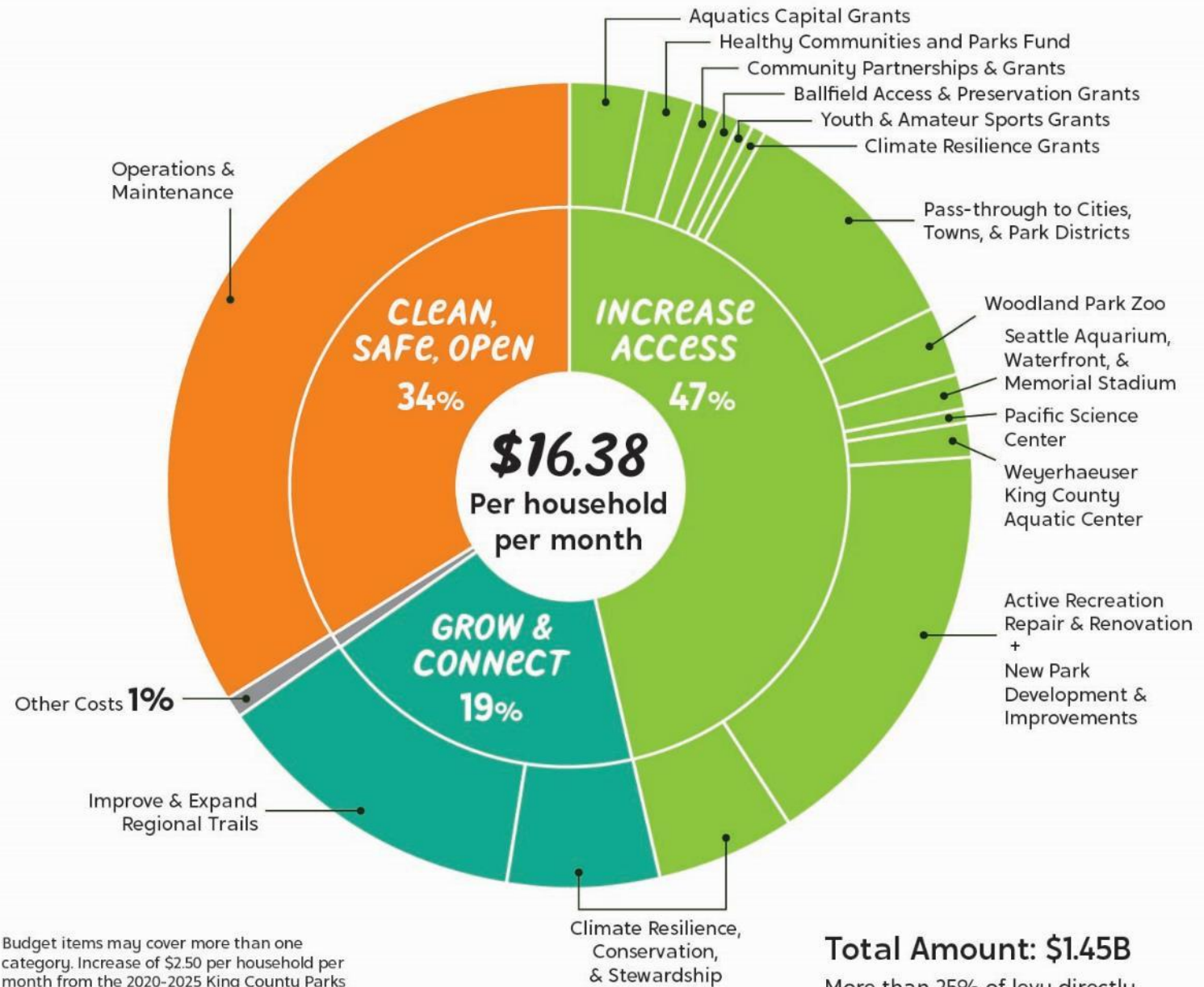
54¢ per day

8¢ more than the current levy



\$16.38 per month

\$2.50 more than current levy



Budget items may cover more than one category. Increase of \$2.50 per household per month from the 2020-2025 King County Parks Levy. Household calculation based on median home value of \$844,000. Budget approved by King County Council on April 15, 2025.

Total Amount: \$1.45B

More than 25% of levy directly allocated to cities, towns, park districts, and partners.



King County Parks Levy Allocation Plan

- Aquatic Facilities
- Ballfields and Sport Courts
- Grants and Community Partnerships
- King County Cities, Towns, and Park Districts
- King County Operations and Maintenance
- Climate Resilience, Conservation, and Stewardship
- Regional and Other Public Trails System
- New Park Development and Improvements
- Active Recreation (and Other) Repair and Renovation



Aquatic Facilities (\$68M)

Weyerhaeuser King County Aquatic Center (\$22M)

- Major maintenance needs
- Energy efficiency upgrades

Aquatic Facilities Grant Program (\$46M)

- For capital needs at new or existing aquatic facilities
- \$15M for specific projects (e.g., Shoreline, Kirkland, Bellevue, Evergreen Aquatic Center, Cottage Lake Pool)



Ballfields and Sport Courts (\$60M)

- New ballfields and sports courts
- Natural grass to synthetic turf field conversions
- Rehabilitation
- Synthetic turf replacement
- Ballfield Preservation and Access Grants (\$13.5M) **New**
To design, build, or program new and enhanced public recreation facilities on County or city-owned lands



Photo Credit: Erik Holsather

Grants and Community Partnerships

Community Partnerships and Grants (\$12.5M)

- For partners to design, build, or program new and enhanced public recreation facilities on County or city-owned lands

Healthy Communities and Parks Fund (\$30M)

- To increase access to and use of recreation facilities in traditionally underserved communities or for people with disabilities.

Youth and Amateur Sports Grants (\$10M)

- To support programs that increase access to sports, play and outdoor recreation

Municipal Parks Capital & Open Space Passthrough (\$25M)



- New funding directed to cities and towns for parks capital and operations

Educational and Civic Venues (\$66.5M)

- Woodland Park Zoo (\$40M)
- Seattle Aquarium (\$12M)
- Seattle Waterfront Park (\$6M)
- Pacific Science Center (\$6M)
- Memorial Stadium Project (\$2.5M)

King County Cities, Towns, and Park Districts (\$144M)

- \$119M directly to cities, towns, and park districts
 - Continues passthrough similar to current levy, doubling the amount (from \$60M)
 - Distributions based on population and assessed value
- \$25M directly to cities and towns
 - Municipal Parks Capital & Open Space Passthrough (*from previous slide*)
 - Distributions based on population and equity considerations



King County Operations & Maintenance (\$490M)

- Operations, Maintenance, Program Delivery, Internal Supports
- Safety & Security Program
- Asset Management
- Land Use Stewardship and Encroachments
- Youth Conservation Corps
- Parks Beautification Program (aka Jobs & Housing)
- Tribal, Indigenous, and Historic Interpretation

Parks' Open Space System by the Numbers:





Climate Resilience, Conservation, Stewardship (\$175M)

Open Space Acquisition / Conservation (\$90M)

Climate Resilience (\$25M)

- Forest stewardship program
- Street tree planting
- Water features and amenities for cooling
- Stormwater Park pilot project
- Climate Resilience Grants (\$5M) **New**

Stewardship of Acquired Lands (\$10M)

- Smaller-scale planning and activation

Fish Passage Program (\$20M)

Environmental Stewardship (\$30M)

- District maintenance facilities
- Securing new property & demolitions
- Natural resource and site planning
- Remediation



Regional and Other Public Trails System (\$182M)

- Eastrail
- Georgetown to South Park Connection
- Green River Trail Extension – North
- Interurban Trail South
- Interurban Trail North
- Kent Regional Trails and Connections
- Kirkland Green Loop
- Lake to Sound Trail
- Maple Valley SR-169 Pedestrian Bridge
- Snoqualmie Valley Trail
- Soos Creek Trail

*And additional project planning to maintain future momentum...
(e.g., Preston-Snoqualmie Trail, Cedar River Trail)*

New Park Development & Improvements

Active Recreation Repair & Renovation

New Park Development & Improvements (\$45.5M)

- County park projects (e.g., off-leash dog parks, park development, community centers)
- City park projects (e.g., skate parks, acquisitions, water access, community gardens)

Active Recreation Repair & Renovation (\$152M)

- ADA and accessibility rehabilitation
- Regional Trails rehabilitation
- County park projects (e.g., Marymoor Park, Sunset Park)
- Major Maintenance of Existing Infrastructure
 - General infrastructure, playgrounds, amenities
 - Water access and dock rehabilitation
 - Backcountry trails, rehabilitation and new
 - Project coordination (e.g., Sound Transit)



Election Day is August 5, 2025

For more information, visit kingcounty.gov/ParksLevy





King County

PARKS

Your Big Backyard

