

King County Parks Replacement Levy

August 5, 2025 Primary Election

The 2026-2031 King County Parks levy ballot measure is a property tax levy lid lift that would replace the current park levy expiring at the end of 2025. It would fund operations and maintenance of King County's parks and trails, support the growth and connection of regional trails, and provide grant programs to expand access to recreation and protect open space for King County residents. Proceeds from the levy would also directly support parks in King County's cities, towns, and park districts, as well as the Woodland Park Zoo, Seattle Aquarium, Pacific Science Center, Seattle Waterfront Park, and Memorial Stadium.

King County Proposition No. 1 Parks Levy

The King County Council adopted Ordinance 19914 replacing the expiring Parks Levy. If approved, this proposition supports county, city, park district, and town parks, open space, and trails; recreation; public pools; and educational and civic venues. It authorizes an additional six-year property tax beginning in 2026 at \$0.2329 per \$1,000 of assessed valuation, uses the 2026 levy amount to compute annual increases in 2027-2031 by the King County inflation plus population index or chapter 84.55 RCW limitation, whichever is greater, and exempts qualifying seniors, veterans, and disabled persons under RCW 84.36.381.



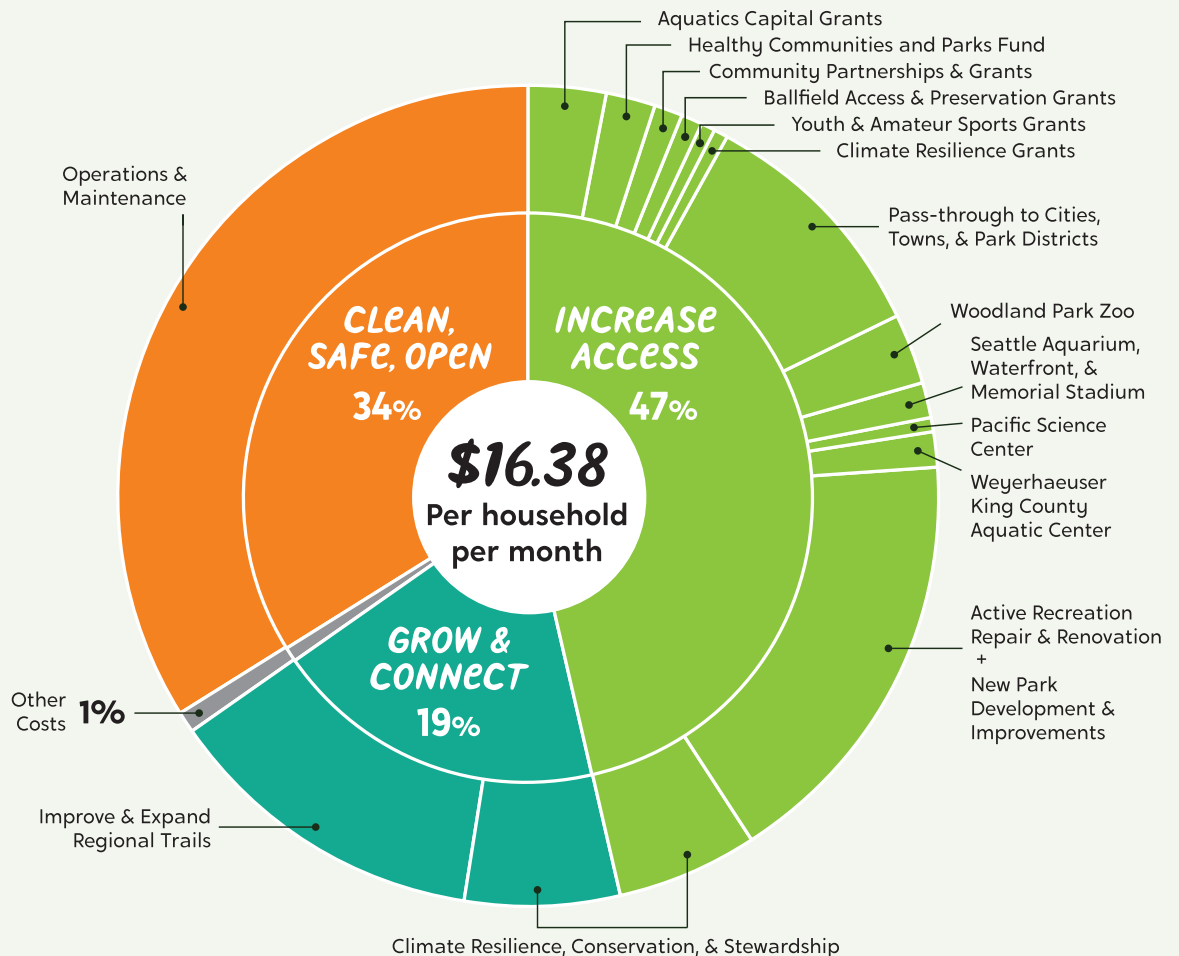
\$0.2329 ¢
per \$1,000
assessed value



\$16.38 PER MONTH
\$2.50 more than
current levy for
owner of home
valued at \$844,000



\$1.45 BILLION
over six years
(2026-2031)




2026
-2031


KING COUNTY PARKS LEVY



LEGEND

-  Backcountry Trail + Forestry
-  Bridge & Trestle
-  Existing Regional Trail
-  Fish Passage
-  Forestry
-  Infrastructure Rehab
-  Regional Trail Improvement
-  Play Area
-  Site with Major Capital Investment
-  Synthetic Turf Replacement

 Pacific Science Center & Memorial Stadium

 Seattle Aquarium & Waterfront Park

 Woodland Park Zoo

 King County

PARKS

Your Big Backyard

For visualization purposes only—locations and details are approximate.



 King County

PARKS

Your Big Backyard

King County Parks
201 S Jackson St., Ste. 6500
Seattle WA 98104

206-477-4527
parksinfo@kingcounty.gov

Election day is August 5, 2025

For more information, visit kingcounty.gov/ParksLevy.



King County Parks Levy Oversight Board

The levy ordinance would continue the nine-member Levy Oversight Board, nominated by King County Council and confirmed by the King County Executive. The board will meet annually to review levy expenditures and report on progress towards levy implementation.

About King County Parks

The mission of King County Parks is to steward, enhance and acquire parks to inspire healthy communities. King County Parks preserves and cares for outdoor spaces, providing places to connect with family, friends, and nature. With hundreds of parks, trails, and natural areas, there's something for everyone in Your Big Backyard.