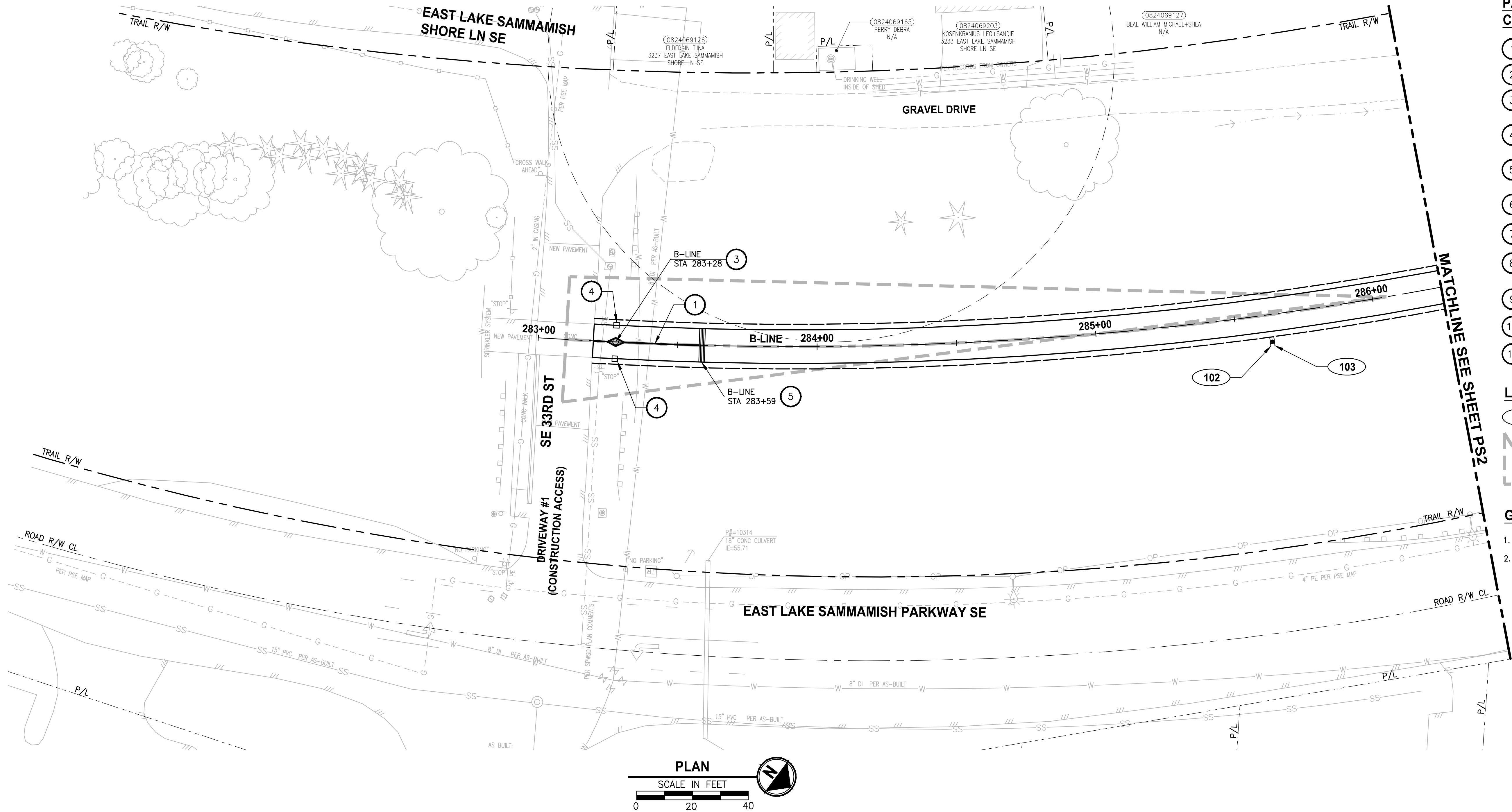


U:\P50\Projects\Clients\1521-KingCo\554-1521-075-ELST\95\ss\CADD\Phase 19\T03_Civil\Draw-Phase1\ PLOTTED BY: purgubut DATE: Friday, November 13, 2020 9:53:19 AM LAYOUT: PSI



PAVEMENT MARKING AND SIGNING
CONSTRUCTION NOTES:

1. INSTALL BOLLARD STRIPING PER DETAIL **1** **MD4** **1** **MD6**
2. INSTALL PET WASTE STATION. SEE APPENDIX B OF SPECIFICATIONS FOR DETAILS.
3. INSTALL TOP LOCKING REMOVABLE BOLLARD PER DETAILS ON SHEET MD5.
4. INSTALL FIXED BOLLARDS PER DETAILS ON SHEET MD7.
5. CONCRETE WARNING BAND PER DETAIL **2** **MD6**
6. NOT USED.
7. NOT USED.
8. NOT USED.
9. INSTALL TRASH RECEPTACLE, SEE APPENDIX B OF SPECIFICATIONS.
10. NOT USED.
11. NOT USED.

LEGEND:

XXX SIGN, SEE SHEET PS13 FOR SIGN SCHEDULE.

14.5' X 295' SIGHT DISTANCE TRIANGLE FOR STOP CONTROLLED INTERSECTION ON DRIVEWAYS PER COS STD FIG 02-19A

GENERAL NOTES:

1. FOR SIGN REMOVAL, SEE SP SHEETS.
2. STATION CALLOUTS ARE MEASURED TO THE CENTER OF WARNING BAND AND BOLLARDS.

CITY OF SAMMAMISH APPROVAL

PLANNING DEPT. APPROVAL
BY: ABaty
DATE: 06/10/2021

Community Development
These drawings have been reviewed for compliance with City of Sammamish Clearing and Grading and Stormwater requirements and also in accordance with the requirements as established in the Settlement Agreement between King County vs. City of Sammamish No. C17-0921 JCC and King County vs. City of Sammamish No. 17-2-28922-7 SEA and have been deemed ACCEPTABLE. The reviewer accepts no responsibility for any errors and/or omissions made by the preparer of these drawings.
10 June 2021

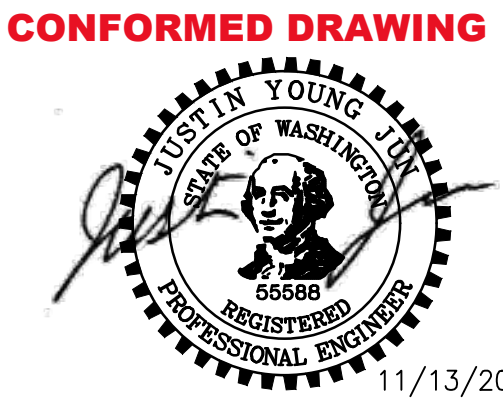
REVISIONS	DATE	BY	DESIGNED
			J. JUN
			DRAWN B. PURGANAN
			CHECKED Y. HO
			APPROVED J. BAILEY

ONE INCH AT FULL SCALE.
IF NOT, SCALE ACCORDINGLY

FILE NAME
BL1521075P19T03PS-01

JOB No.
554-1521-075 P19 T03

DATE
NOVEMBER 2020



Parametrix
ENGINEERING . PLANNING . ENVIRONMENTAL SCIENCES

719 2ND AVENUE, SUITE 200 | SEATTLE, WA 98104
P 206.394.3700
WWW.PARAMETRIX.COM

PROJECT NAME

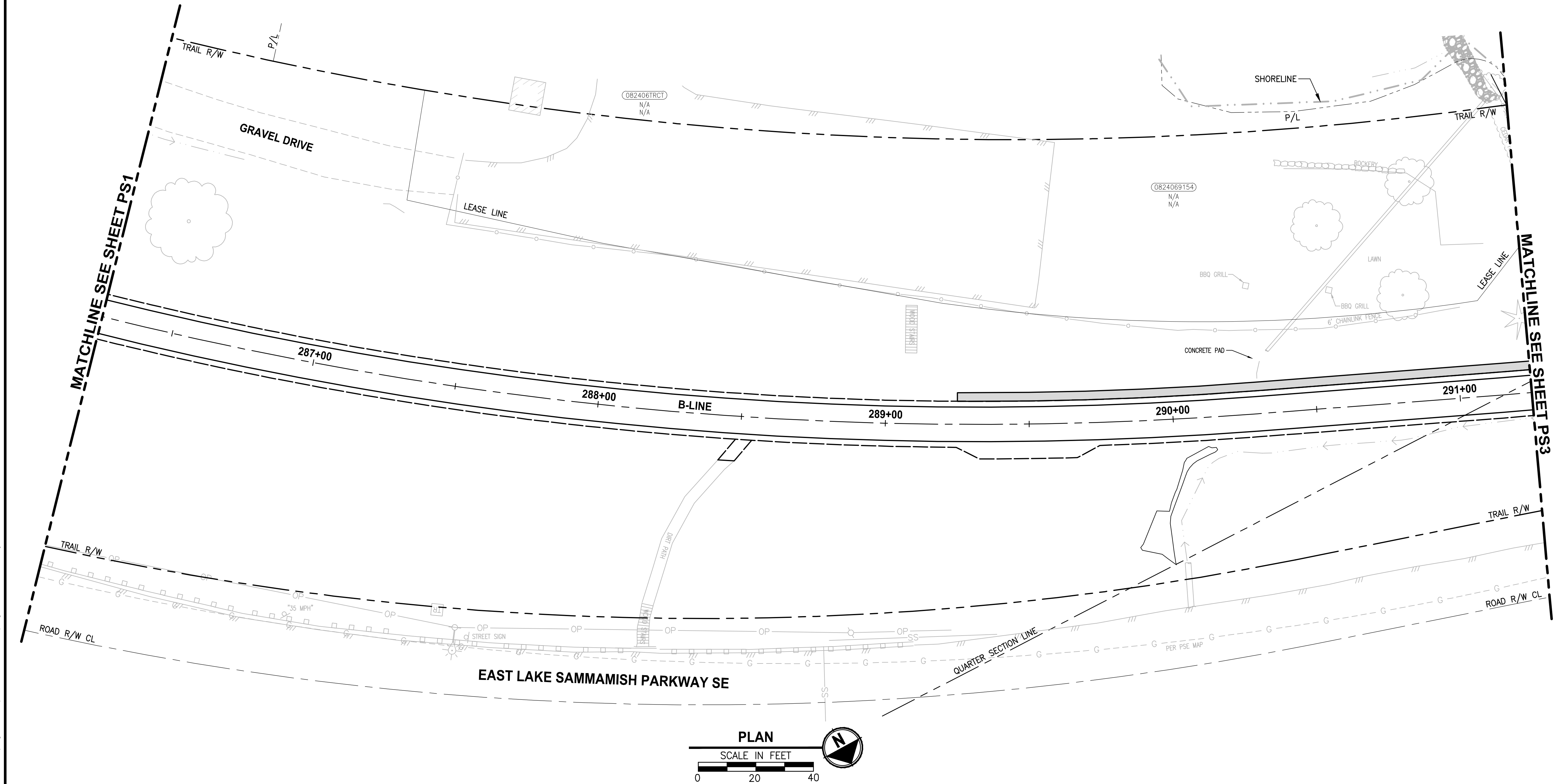
EAST LAKE SAMMAMISH
MASTER PLAN TRAIL
SOUTH SAMMAMISH SEGMENT B - PHASE 1
SAMMAMISH, WA

PAVEMENT MARKING AND
SIGNING PLAN

PS1

SHEET NO.
122 OF 190

PLOTTED BY: purgobut DATE: Friday, November 13, 2020 9:53:29 AM
PATH: U:\PSO\Projects\Clients\1521-KingCo\554-1521-075-ELST\99Sves\CADD\Phase 19\T03 Civil\Draw-Phase1\ LAYOUT: PS2



**PAVEMENT MARKING AND SIGNING
CONSTRUCTION NOTES:**

1. INSTALL BOLLARD STRIPING PER DETAIL 1 1
MD4 MD6
2. INSTALL PET WASTE STATION. SEE APPENDIX B OF SPECIFICATIONS FOR DETAILS.
3. INSTALL TOP LOCKING REMOVABLE BOLLARD PER DETAILS ON SHEET MD5.
4. INSTALL FIXED BOLLARDS PER DETAILS ON SHEET MD7.
5. CONCRETE WARNING BAND PER DETAIL 2
MD6
6. NOT USED.
7. NOT USED.
8. NOT USED.
9. INSTALL TRASH RECEPTACLE, SEE APPENDIX B OF SPECIFICATIONS.
10. NOT USED.
11. NOT USED.

LEGEND:

XXX SIGN, SEE SHEET PS13 FOR SIGN SCHEDULE.

14.5' X 295' SIGHT DISTANCE TRIANGLE FOR STOP CONTROLLED INTERSECTION ON DRIVEWAYS PER COS STD FIG 02-19A

GENERAL NOTES:

1. FOR SIGN REMOVAL, SEE SP SHEETS.
2. STATION CALLOUTS ARE MEASURED TO THE CENTER OF WARNING BAND AND BOLLARDS.

CITY OF SAMMAMISH APPROVAL

PLANNING DEPT. APPROVAL

BY: ABaty

DATE: 06/10/2021

**CITY OF SAMMAMISH PUBLIC WORKS
DEVELOPMENT REVIEW**

These drawings have been reviewed for compliance with City of Sammamish Clearing and Grading and Stormwater requirements and also in accordance with the requirements as established in the Settlement Agreement between King County vs. City of Sammamish No. C17-0921 JCC and King County vs. City of Sammamish No. 17-2-29922-7 SEA and have been deemed ACCEPTABLE. The reviewer accepts no responsibility for any errors and/or omissions made by the preparer of these drawings.

10 June 2021

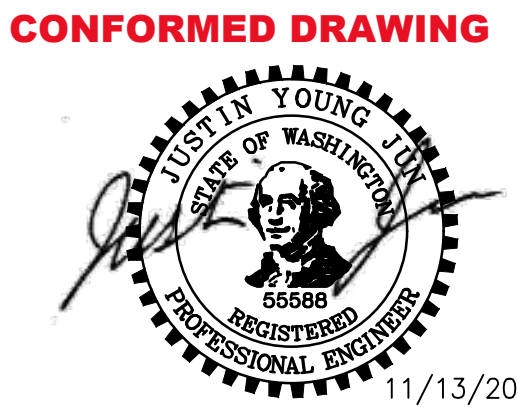
REVISIONS	DATE	BY	DESIGNED
			J. JUN
			DRAWN
			B. PURGANAN
			CHECKED
			Y. HO
			APPROVED
			J. BAILEY

**ONE INCH AT FULL SCALE.
IF NOT, SCALE ACCORDINGLY**

FILE NAME
BL1521075P19T03PS-01

JOB No.
554-1521-075 P19 T03

DATE
NOVEMBER 2020



Parametrix

ENGINEERING · PLANNING · ENVIRONMENTAL SCIENCES

719 2ND AVENUE, SUITE 200 | SEATTLE, WA 98104
P 206.394.3700
WWW.PARAMETRIX.COM

PROJECT NAME

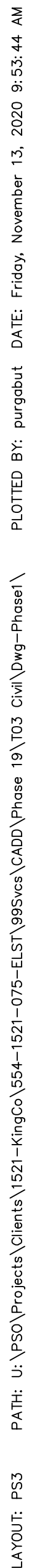
**EAST LAKE SAMMAMISH
MASTER PLAN TRAIL
SOUTH SAMMAMISH SEGMENT B - PHASE 1**

SAMMAMISH, WA

PAVEMENT MARKING AND
SIGNING PLAN

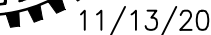
SHEET NO.
123 OF 190

PS2



**ONE INCH AT FULL SCALE.
IF NOT, SCALE ACCORDINGLY**

FILE NAME
BL1521075P19T03PS-01
JOB No.
554-1521-075 P19 T03
DATE
NOVEMBER 2020



719 2ND AVENUE, SUITE 200 | SEATTLE, WA 98104
P 206.394.3700
WWW.PARAMETRIX.COM

PAVEMENT MARKING AND SIGNING PLAN

PS3

- 1 INSTALL BOLLARD STRIPING PER DETAIL  
- 2 INSTALL PET WASTE STATION. SEE APPENDIX B OF SPECIFICATIONS FOR DETAILS.
- 3 INSTALL TOP LOCKING REMOVABLE BOLLARD PER DETAILS ON SHEET MD5.
- 4 INSTALL FIXED BOLLARDS PER DETAILS ON SHEET MD7.
- 5 CONCRETE WARNING BAND PER DETAIL 
- 6 NOT USED.
- 7 NOT USED.
- 8 NOT USED.
- 9 INSTALL TRASH RECEPTACLE, SEE APPENDIX B OF SPECIFICATIONS.
- 10 NOT USED.
- 11 NOT USED.

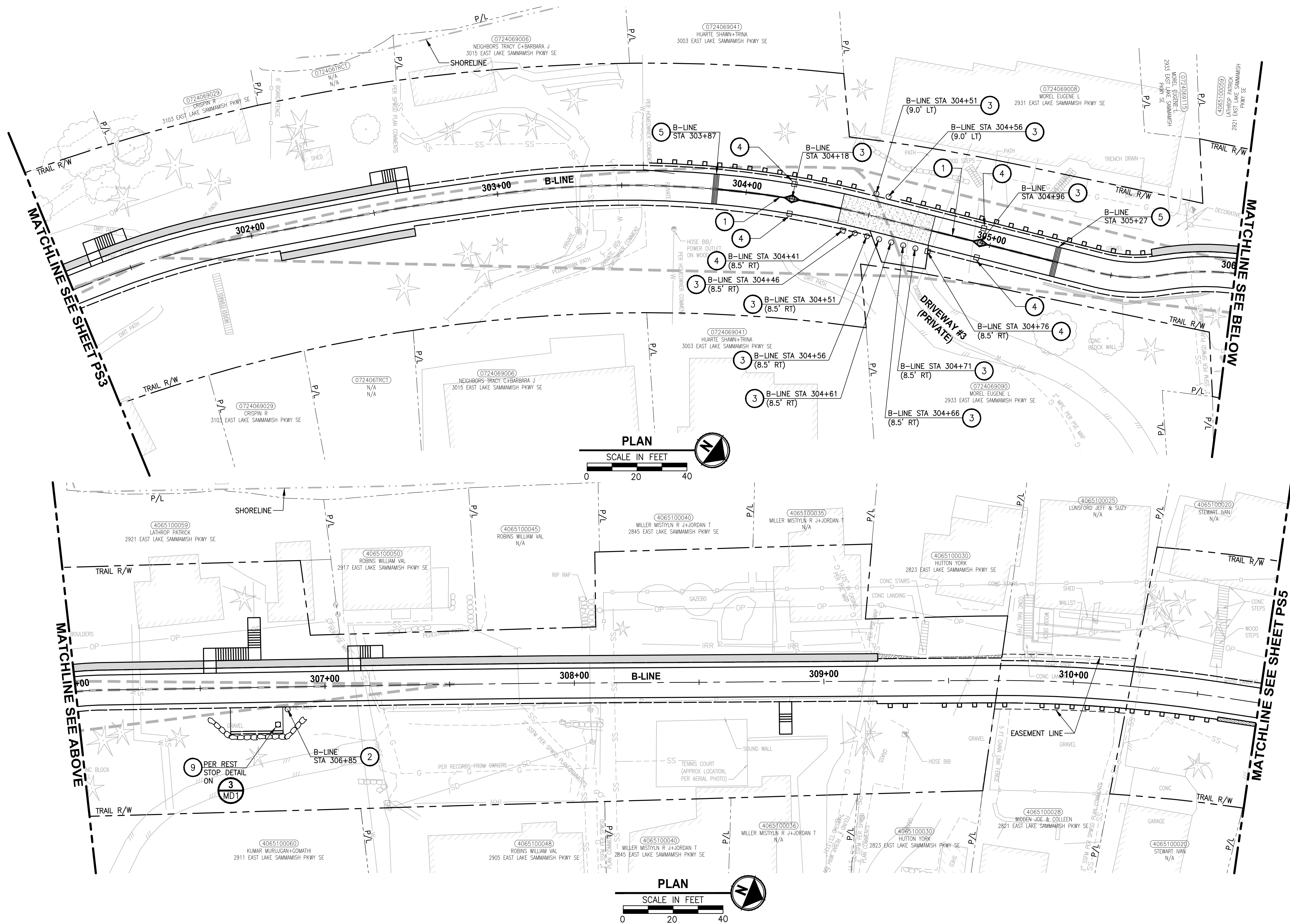
XXX SIGN, SEE SHEET PS13 FOR SIGN SCHEDULE.

GENERAL NOTES:

1. FOR SIGN REMOVAL, SEE SP SHEETS.
2. STATION CALLOUTS ARE MEASURED TO THE CENTER OF WARNING BAND AND BOLLARDS




These drawings have been reviewed for compliance with City of Sammamish Clearing and Grading and Stormwater requirements and also in accordance with the requirements as established in the Settlement Agreement between King County vs. City of Sammamish No. C17-0921 JCC and King County vs. City of Sammamish No. 17-2129922-7 SEA and have been deemed ACCEPTABLE. The reviewer accepts no responsibility for any errors and/or omissions made by the preparer of these drawings.

10 June 2021



PAVEMENT MARKING AND SIGNING

CONSTRUCTION NOTES:

- 1 INSTALL BOLLARD STRIPING PER DETAIL  
- 2 INSTALL PET WASTE STATION. SEE APPENDIX B OF SPECIFICATIONS FOR DETAILS.
- 3 INSTALL TOP LOCKING REMOVABLE BOLLARD PER DETAILS ON SHEET MD5.
- 4 INSTALL FIXED BOLLARDS PER DETAILS ON SHEET MD7.
- 5 CONCRETE WARNING BAND PER DETAIL 
- 6 NOT USED.
- 7 NOT USED.
- 8 NOT USED.
- 9 INSTALL TRASH RECEPTACLE, SEE APPENDIX B OF SPECIFICATIONS.
- 10 NOT USED.
- 11 NOT USED.

LEGEND:

XXX SIGN, SEE SHEET PS13 FOR SIGN SCHEDULE

14.5' X 295' SIGHT DISTANCE TRIANGLE FOR
STOP CONTROLLED INTERSECTION ON DRIVEWAYS
PER COS STD FIG 02-19A

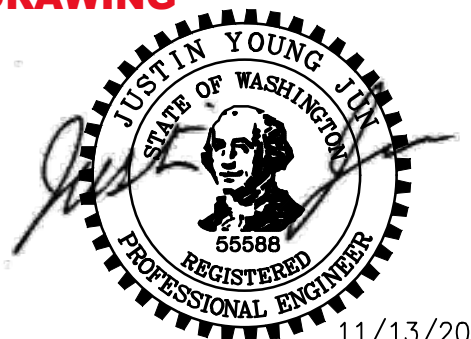
GENERAL NOTES:

1. FOR SIGN REMOVAL, SEE SP SHEETS.
2. STATION CALLOUTS ARE MEASURED TO THE CENTER OF WARNING BAND AND BOLLARDS

<div style="border: 1px solid black; width: 20px; height: 20px; display: flex; align-items: center; justify-content: center;"> <div style="border: 1px solid black; width: 10px; height: 10px; margin: 2px;"></div> </div>	REVIEWS	DATE	BY	DESIGNED J. JUN
				DRAWN B. PURGANAN
				CHECKED Y. HO
				APPROVED J. BAILEY

ONE INCH AT FULL SCALE.
IF NOT, SCALE ACCORDINGLY

FILE NAME
BL1521075P19T03PS-01
JOB No.
554-1521-075 P19 T03
DATE
NOVEMBER 2020



Parametrix
ENGINEERING . PLANNING . ENVIRONMENTAL SCIENCES

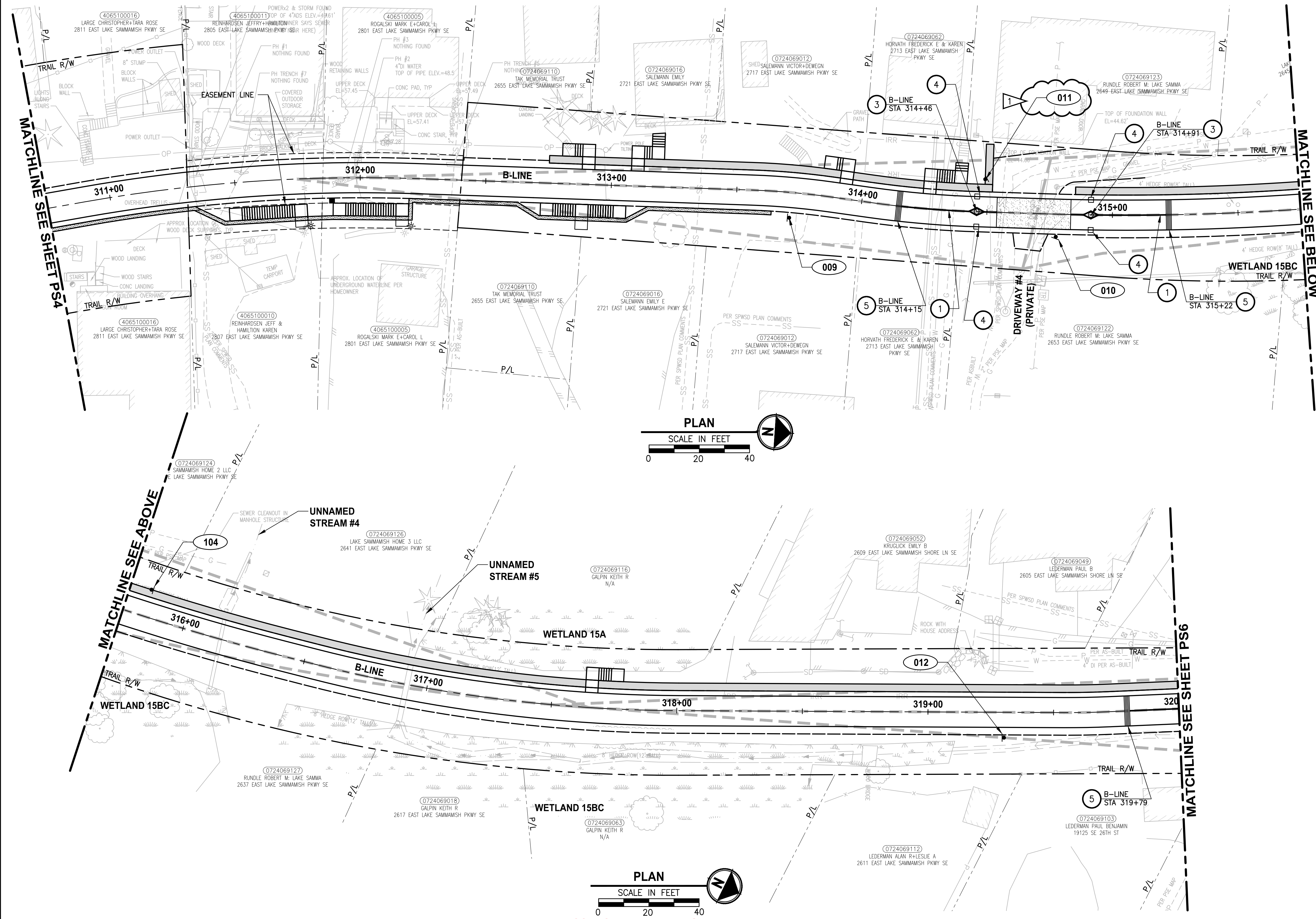
719 2ND AVENUE, SUITE 200 | SEATTLE, WA 98101
P 206.394.3700
WWW.PARAMETRIX.COM

PROJECT NAME
**EAST LAKE SAMMAMISH
MASTER PLAN TRAIL
SOUTH SAMMAMISH SEGMENT B - PHASE 1**
SAMMAMISH, WA

PAVEMENT MARKING AND SIGNING PLAN




SHEET NO.
125 OF 190

PS4



PAVEMENT MARKING AND SIGNING

CONSTRUCTION NOTES:

- 1 INSTALL BOLLARD STRIPING PER DETAIL  
- 2 INSTALL PET WASTE STATION. SEE APPENDIX B OF SPECIFICATIONS FOR DETAILS.
- 3 INSTALL TOP LOCKING REMOVABLE BOLLARD PER DETAILS ON SHEET MD5.
- 4 INSTALL FIXED BOLLARDS PER DETAILS ON SHEET MD7.
- 5 CONCRETE WARNING BAND PER DETAIL 
- 6 NOT USED.
- 7 NOT USED.
- 8 NOT USED.
- 9 INSTALL TRASH RECEPTACLE, SEE APPENDIX B OF SPECIFICATIONS.
- 10 NOT USED.
- 11 NOT USED.

LEGEND:

XXX SIGN, SEE SHEET PS13 FOR SIGN SCHEDULE.



14.5' X 295' SIGHT DISTANCE TRIANGLE FOR
STOP CONTROLLED INTERSECTION ON DRIVEWAYS
PER COS STD FIG 02-19A

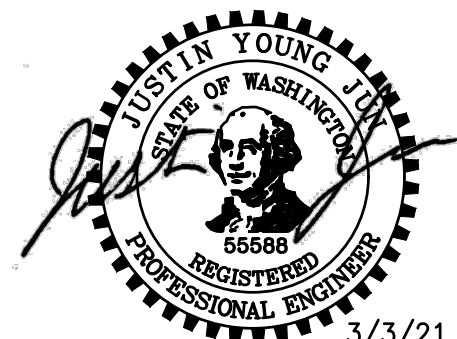
GENERAL NOTES:

1. FOR SIGN REMOVAL, SEE SP SHEETS.
2. STATION CALLOUTS ARE MEASURED TO THE CENTER OF WARNING BAND AND BOLLARDS

➤	REVISIONS	DATE	BY	DESIGNED J. JUN
1	ADDENDUM #6	3/3/21	MT	DRAWN B. PURGANAN
				CHECKED Y. HO
				APPROVED J. BAILEY

**ONE INCH AT FULL SCALE.
IF NOT, SCALE ACCORDINGLY**

FILE NAME
BL1521075P19T03PS-01
JOB No.
554-1521-075 P19 T03
DATE
NOVEMBER 2020



Parametrix
ENGINEERING • PLANNING • ENVIRONMENTAL SCIENCES

719 2ND AVENUE, SUITE 200 | SEATTLE, WA 98104
P 206.394.3700
WWW.PARAMETRIX.COM

PROJECT NAME

**EAST LAKE SAMMAMISH
MASTER PLAN TRAIL
SOUTH SAMMAMISH SEGMENT B - PHASE 1**

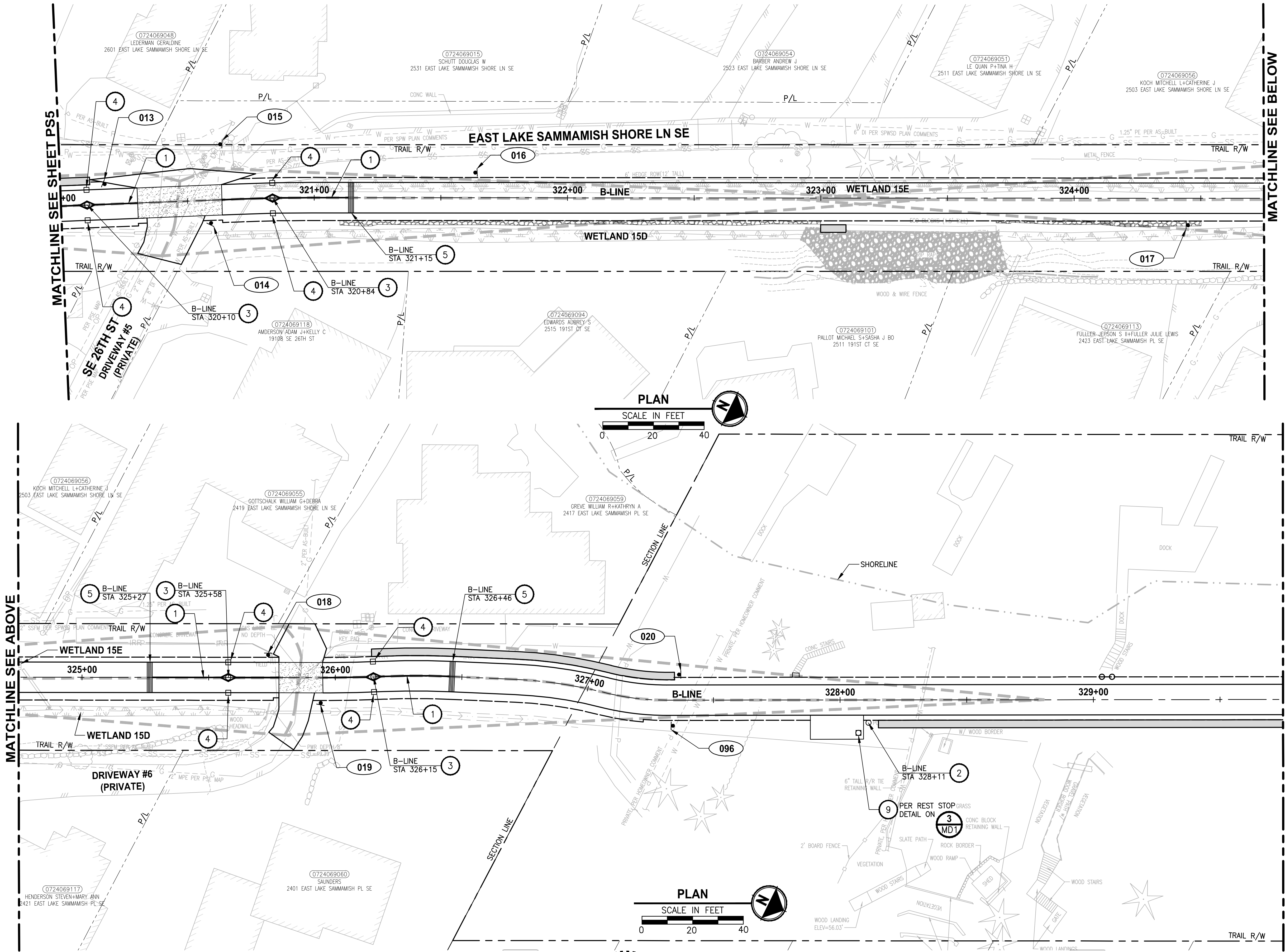
SAMMAMISH, WA

PAVEMENT MARKING AND SIGNING PLAN

SHEET NO.
100 OF 190

PS

PATH: U:\PSO\Projects\Clients\1521-KingCo\554-1521-075-ELST\99Sves\CADD\Phase 19\T03 Civil\Draw-Phase\ PLOTTED BY: purgobut DATE: Friday, November 13, 2020 9:54:29 AM LAYOUT: PS6



PAVEMENT MARKING AND SIGNING CONSTRUCTION NOTES:

1. INSTALL BOLLARD STRIPING PER DETAIL **MD4** **MD6**
2. INSTALL PET WASTE STATION. SEE APPENDIX B OF SPECIFICATIONS FOR DETAILS.
3. INSTALL TOP LOCKING REMOVABLE BOLLARD PER DETAILS ON SHEET MD5.
4. INSTALL FIXED BOLLARDS PER DETAILS ON SHEET MD7.
5. CONCRETE WARNING BAND PER DETAIL **MD6**
6. NOT USED.
7. NOT USED.
8. NOT USED.
9. INSTALL TRASH RECEPTACLE, SEE APPENDIX B OF SPECIFICATIONS.
10. NOT USED.
11. NOT USED.

LEGEND:

XXX SIGN, SEE SHEET PS13 FOR SIGN SCHEDULE.

14.5' X 29.5' SIGHT DISTANCE TRIANGLE FOR STOP CONTROLLED INTERSECTION ON DRIVEWAYS PER COS STD FIG 02-19A

GENERAL NOTES:

1. FOR SIGN REMOVAL, SEE SP SHEETS.
2. STATION CALLOUTS ARE MEASURED TO THE CENTER OF WARNING BAND AND BOLLARDS.

CITY OF SAMMAMISH APPROVAL

PLANNING DEPT. APPROVAL
BY: ABaty
DATE: 06/10/2021

Community Development

CITY OF SAMMAMISH PUBLIC WORKS DEVELOPMENT REVIEW

These drawings have been reviewed for compliance with City of Sammamish Clearing and Grading and Stormwater requirements and also in accordance with the requirements as established in the Settlement Agreement between King County vs. City of Sammamish No. C17-0921 JCC and King County vs. City of Sammamish No. 17-2-28922-7 SEA and have been deemed ACCEPTABLE. The reviewer accepts no responsibility for any errors and/or omissions made by the preparer of these drawings.
10 June 2021

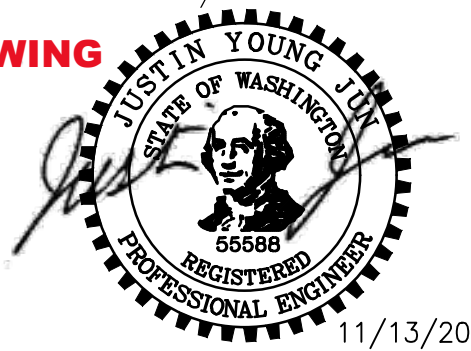
REVISIONS	DATE	BY	DESIGNED
			J. JUN
			DRAWN B. PURGANAN
			CHECKED Y. HO
			APPROVED J. BAILEY

ONE INCH AT FULL SCALE.
IF NOT, SCALE ACCORDINGLY

FILE NAME
BL1521075P19T03PS-01

JOB No.
554-1521-075 P19 T03

DATE
NOVEMBER 2020



Parametrix

ENGINEERING · PLANNING · ENVIRONMENTAL SCIENCES

719 2ND AVENUE, SUITE 200 | SEATTLE, WA 98104
P 206.394.3700
WWW.PARAMETRIX.COM

PROJECT NAME

EAST LAKE SAMMAMISH MASTER PLAN TRAIL SOUTH SAMMAMISH SEGMENT B - PHASE 1

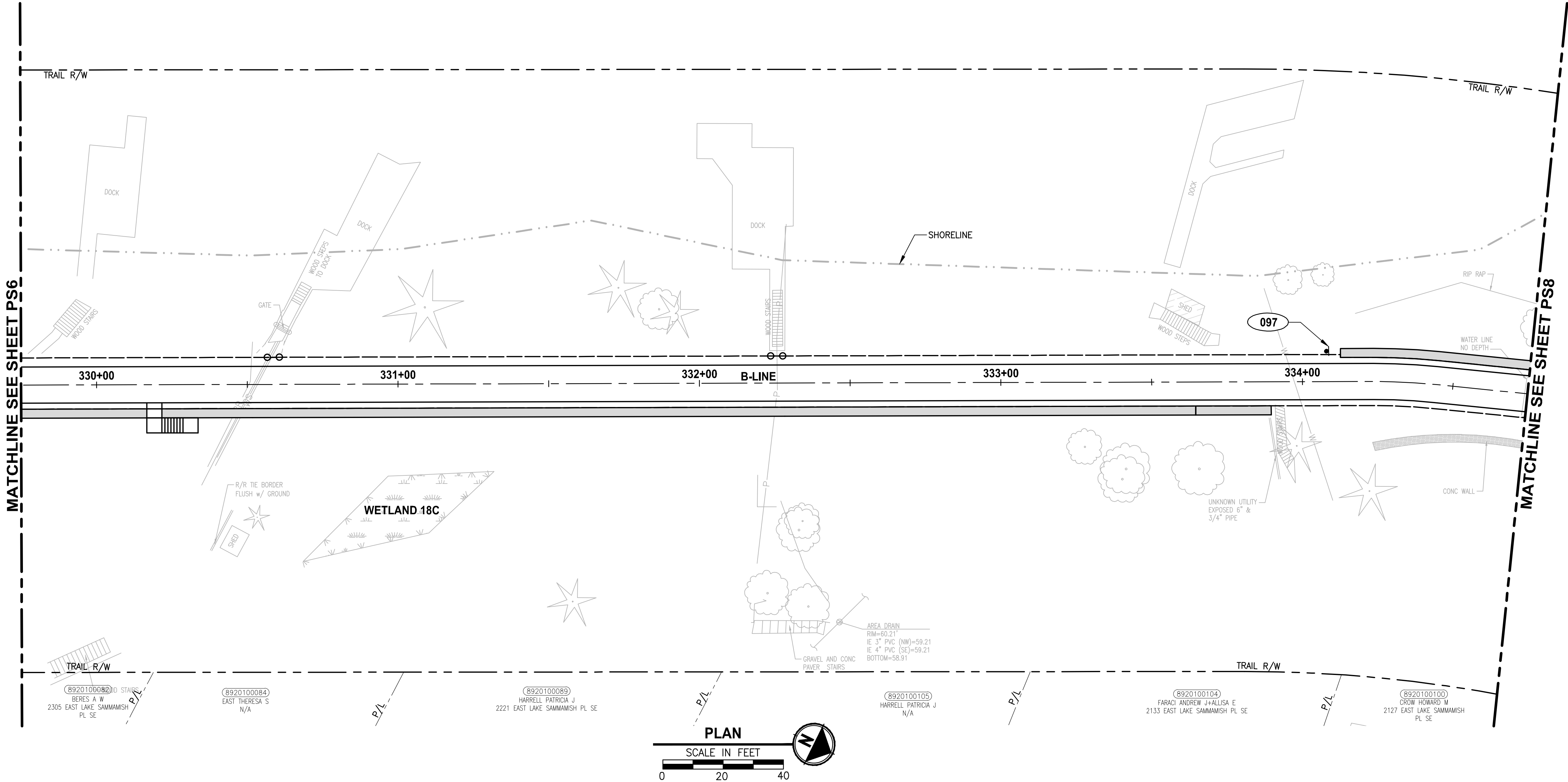
SAMMAMISH, WA

PAVEMENT MARKING AND SIGNING PLAN

SHEET NO.
127 OF 190

PS6

PATH: U:\PSO\Projects\Clients\1521-KingCo\554-1521-075-ELST\99Sves\CADD\Phase 19\T03_Civil\Draw-Phase1 LAYOUT: PS7 PLOTTED BY: purgobut DATE: Friday, November 13, 2020 9:54:51 AM



**PAVEMENT MARKING AND SIGNING
CONSTRUCTION NOTES:**

1. INSTALL BOLLARD STRIPING PER DETAIL **1** MD4 **1** MD6
2. INSTALL PET WASTE STATION. SEE APPENDIX B OF SPECIFICATIONS FOR DETAILS.
3. INSTALL TOP LOCKING REMOVABLE BOLLARD PER DETAILS ON SHEET MD5.
4. INSTALL FIXED BOLLARDS PER DETAILS ON SHEET MD7.
5. CONCRETE WARNING BAND PER DETAIL **2** MD6
6. NOT USED.
7. NOT USED.
8. NOT USED.
9. INSTALL TRASH RECEPTACLE, SEE APPENDIX B OF SPECIFICATIONS.
10. NOT USED.
11. NOT USED.

LEGEND:

XXX SIGN, SEE SHEET PS13 FOR SIGN SCHEDULE.

14.5' X 295' SIGHT DISTANCE TRIANGLE FOR STOP CONTROLLED INTERSECTION ON DRIVEWAYS PER COS STD FIG 02-19A

GENERAL NOTES:

1. FOR SIGN REMOVAL, SEE SP SHEETS.
2. STATION CALLOUTS ARE MEASURED TO THE CENTER OF WARNING BAND AND BOLLARDS.

CITY OF SAMMAMISH APPROVAL

PLANNING DEPT. APPROVAL
BY: ABaty
DATE: 06/10/2021

Community Development

CITY OF SAMMAMISH PUBLIC WORKS
DEVELOPMENT REVIEW

These drawings have been reviewed for compliance with City of Sammamish Clearing and Grading and Stormwater requirements and also in accordance with the requirements as established in the Settlement Agreement between King County vs. City of Sammamish No. C17-0921 JCC and King County vs. City of Sammamish No. 17-2-28922-7 SEA and have been deemed ACCEPTABLE. The reviewer accepts no responsibility for any errors and/or omissions made by the preparer of these drawings.
10 June 2021

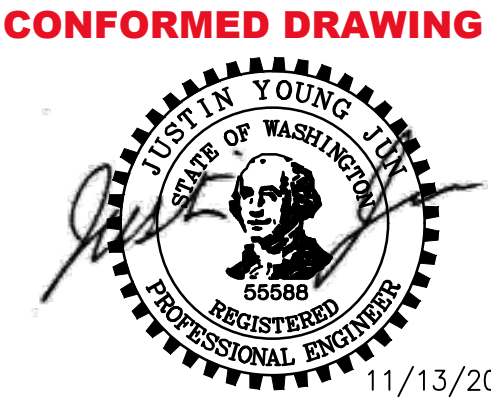
REVISIONS	DATE	BY	DESIGNED
			J. JUN
			DRAWN
			B. PURGANAN
			CHECKED
			Y. HO
			APPROVED
			J. BAILEY

ONE INCH AT FULL SCALE.
IF NOT, SCALE ACCORDINGLY

FILE NAME
BL1521075P19T03PS-02

JOB No.
554-1521-075 P19 T03

DATE
NOVEMBER 2020



Parametrix

ENGINEERING . PLANNING . ENVIRONMENTAL SCIENCES

719 2ND AVENUE, SUITE 200 | SEATTLE, WA 98104
P 206.394.3700
WWW.PARAMETRIX.COM

PROJECT NAME

**EAST LAKE SAMMAMISH
MASTER PLAN TRAIL
SOUTH SAMMAMISH SEGMENT B - PHASE 1**

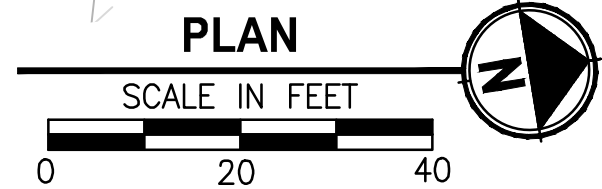
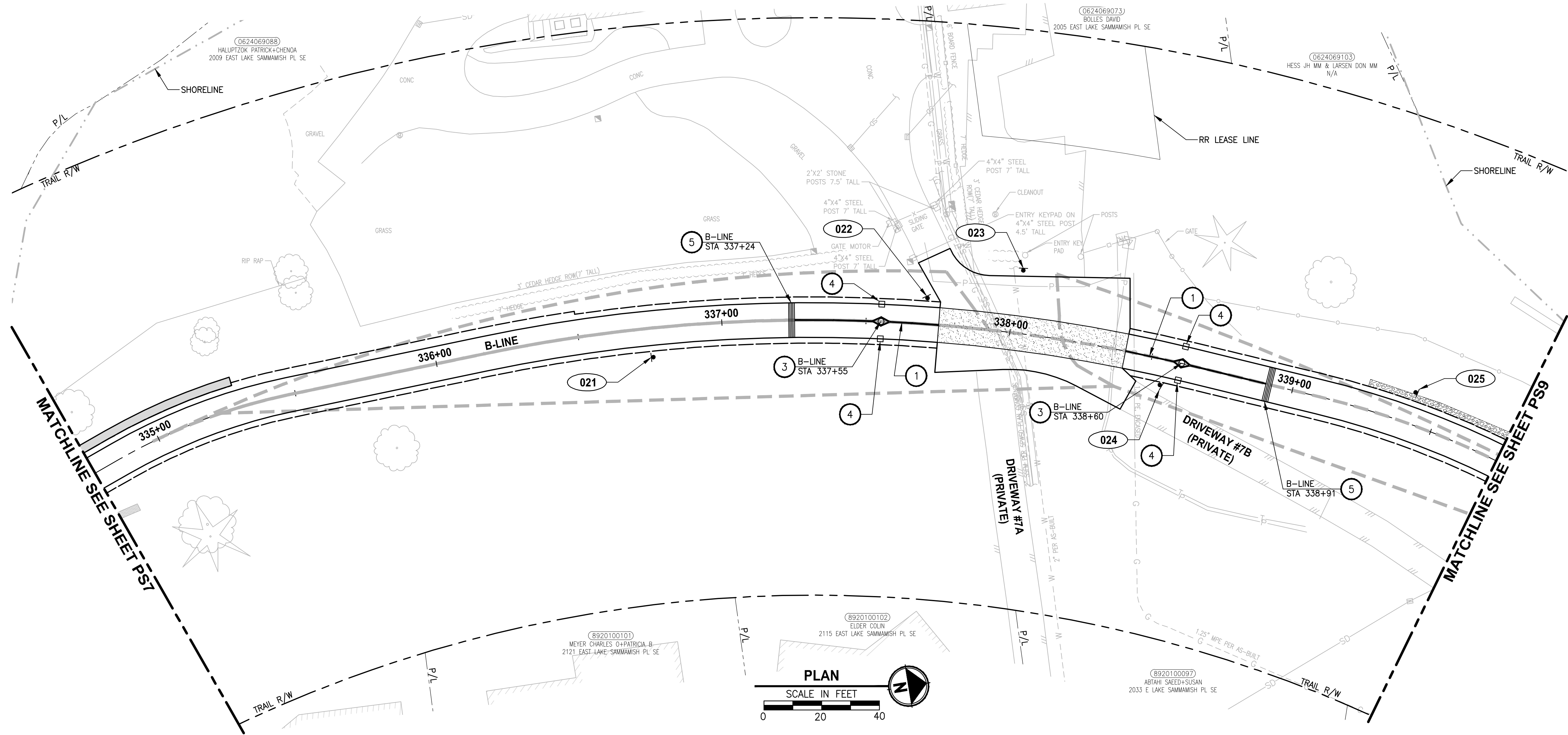
SAMMAMISH, WA

**PAVEMENT MARKING AND
SIGNING PLAN**

SHEET NO.
128 OF 190

PS7

PATH: U:\PSO\Projects\Clients\1521-KingCo\554-1521-075-ELST\99Sves\CADD\Phase 19\T03 Civil\Draw-Phase1\ PLOTTED BY: purgobut DATE: Friday, November 13, 2020 9:54:59 AM LAYOUT: PS8



**PAVEMENT MARKING AND SIGNING
CONSTRUCTION NOTES:**

1. INSTALL BOLLARD STRIPING PER DETAIL **1** **MD4** **1** **MD6**
2. INSTALL PET WASTE STATION. SEE APPENDIX B OF SPECIFICATIONS FOR DETAILS.
3. INSTALL TOP LOCKING REMOVABLE BOLLARD PER DETAILS ON SHEET MD5.
4. INSTALL FIXED BOLLARDS PER DETAILS ON SHEET MD7.
5. CONCRETE WARNING BAND PER DETAIL **2** **MD6**
6. NOT USED.
7. NOT USED.
8. NOT USED.
9. INSTALL TRASH RECEPTACLE, SEE APPENDIX B OF SPECIFICATIONS.
10. NOT USED.
11. NOT USED.

LEGEND:

XXX SIGN, SEE SHEET PS13 FOR SIGN SCHEDULE.

14.5' X 295' SIGHT DISTANCE TRIANGLE FOR STOP CONTROLLED INTERSECTION ON DRIVEWAYS PER COS STD FIG 02-19A

GENERAL NOTES:

1. FOR SIGN REMOVAL, SEE SP SHEETS.
2. STATION CALLOUTS ARE MEASURED TO THE CENTER OF WARNING BAND AND BOLLARDS.

CITY OF SAMMAMISH APPROVAL

PLANNING DEPT. APPROVAL

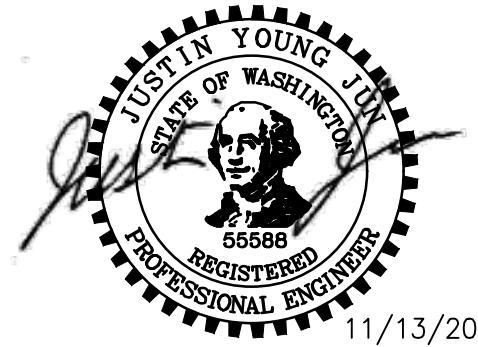
BY: ABaty
DATE: 06/10/2021

Community Development

**CITY OF SAMMAMISH PUBLIC WORKS
DEVELOPMENT REVIEW**

These drawings have been reviewed for compliance with City of Sammamish Clearing and Grading and Stormwater requirements and also in accordance with the requirements as established in the Settlement Agreement between King County vs. City of Sammamish No. C17-0921 JCC and King County vs. City of Sammamish No. 17-2-28922-7 SEA and have been deemed ACCEPTABLE. The reviewer accepts no responsibility for any errors and/or omissions made by the preparer of these drawings.
10 June 2021

CONFORMED DRAWING



Parametrix
ENGINEERING . PLANNING . ENVIRONMENTAL SCIENCES

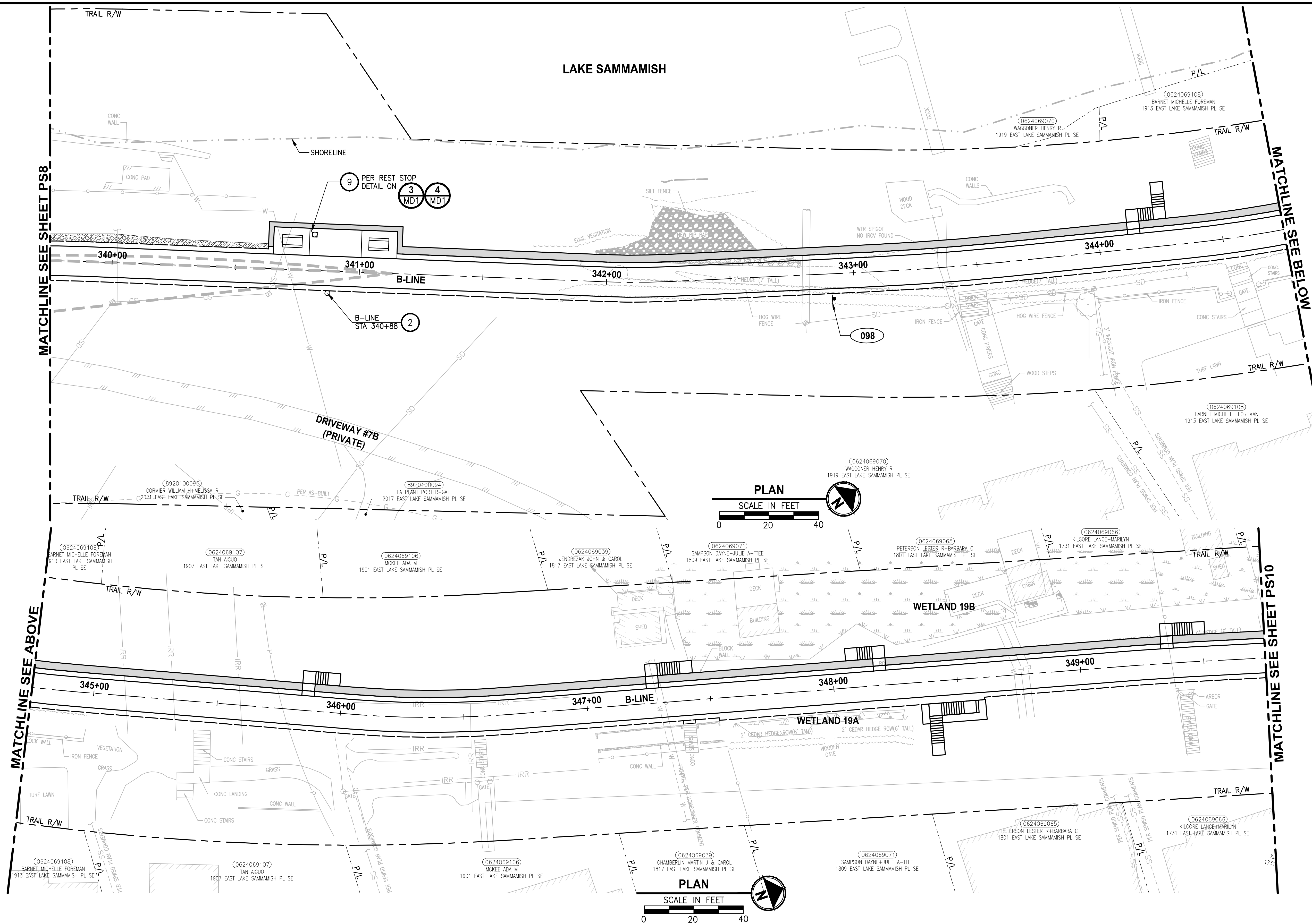
719 2ND AVENUE, SUITE 200 | SEATTLE, WA 98104
P 206.394.3700
WWW.PARAMETRIX.COM

PROJECT NAME
**EAST LAKE SAMMAMISH
MASTER PLAN TRAIL
SOUTH SAMMAMISH SEGMENT B - PHASE 1**
SAMMAMISH, WA

**PAVEMENT MARKING AND
SIGNING PLAN**

SHEET NO.
129 OF 190

PS8



PAVEMENT MARKING AND SIGNING

CONSTRUCTION NOTES:

- 1 INSTALL BOLLARD STRIPING PER DETAIL ~~1~~
MD4 ~~1~~
MD6
- 2 INSTALL PET WASTE STATION. SEE APPENDIX B
OF SPECIFICATIONS FOR DETAILS.
- 3 INSTALL TOP LOCKING REMOVABLE
BOLLARD PER DETAILS ON SHEET MD5.
- 4 INSTALL FIXED BOLLARDS PER DETAILS ON
SHEET MD7.
- 5 CONCRETE WARNING BAND PER DETAIL ~~2~~
MD6
- 6 NOT USED.
- 7 NOT USED.
- 8 NOT USED.
- 9 INSTALL TRASH RECEPTACLE, SEE APPENDIX B
OF SPECIFICATIONS.
- 10 NOT USED.
- 11 NOT USED.

LEGEND:

XXX SIGN, SEE SHEET PS13 FOR SIGN SCHEDULE

14.5' X 295' SIGHT DISTANCE TRIANGLE FOR
STOP CONTROLLED INTERSECTION ON DRIVEWAYS
PER COS STD FIG 02-19A

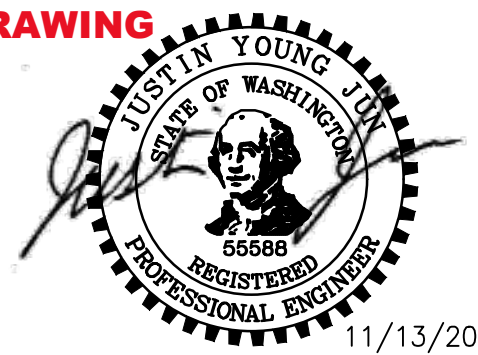
GENERAL NOTES:

1. FOR SIGN REMOVAL, SEE SP SHEETS.
2. STATION CALLOUTS ARE MEASURED TO THE CENTER OF WARNING BAND AND BOLLARDS

CITY OF SAMMAMISH APPROVAL	
PLANNING DEPT. APPROVAL BY: A.Baty DATE: 06/10/2021	CITY OF SAMMAMISH PUBLIC WORKS DEVELOPMENT REVIEW These drawings have been reviewed for compliance with City of Sammamish Clearing and Grading and Stormwater requirements and also in accordance with the requirements as established in the Settlement Agreement between King County vs. City of Sammamish No. 0:07-1211 and King County vs. City of Sammamish No. 17-29922-SEA and have been deemed ACCEPTABLE . The reviewer accepts no responsibility for any errors and/or omissions made by the preparer of these drawings. 10 June 2021

<div style="border: 1px solid black; width: 20px; height: 20px; display: flex; align-items: center; justify-content: center;"> <div style="width: 10px; height: 10px; background-color: black;"></div> </div>	REVISIONS	DATE	BY	DESIGNED J. JUN
				DRAWN B. PURGANAN
				CHECKED Y. HO
				APPROVED J. BAILEY

<div style="border: 1px solid black; width: 100px; height: 20px; margin: 0 auto;"></div> <p>ONE INCH AT FULL SCALE. IF NOT, SCALE ACCORDINGLY</p> <p>FILE NAME BL1521075P19T03PS-02</p> <p>JOB No. 554-1521-075 P19 T03</p> <p>DATE NOVEMBER 2020</p>
--



PROJECT NAME

**EAST LAKE SAMMAMISH
MASTER PLAN TRAIL
SOUTH SAMMAMISH SEGMENT B - PHASE 1**

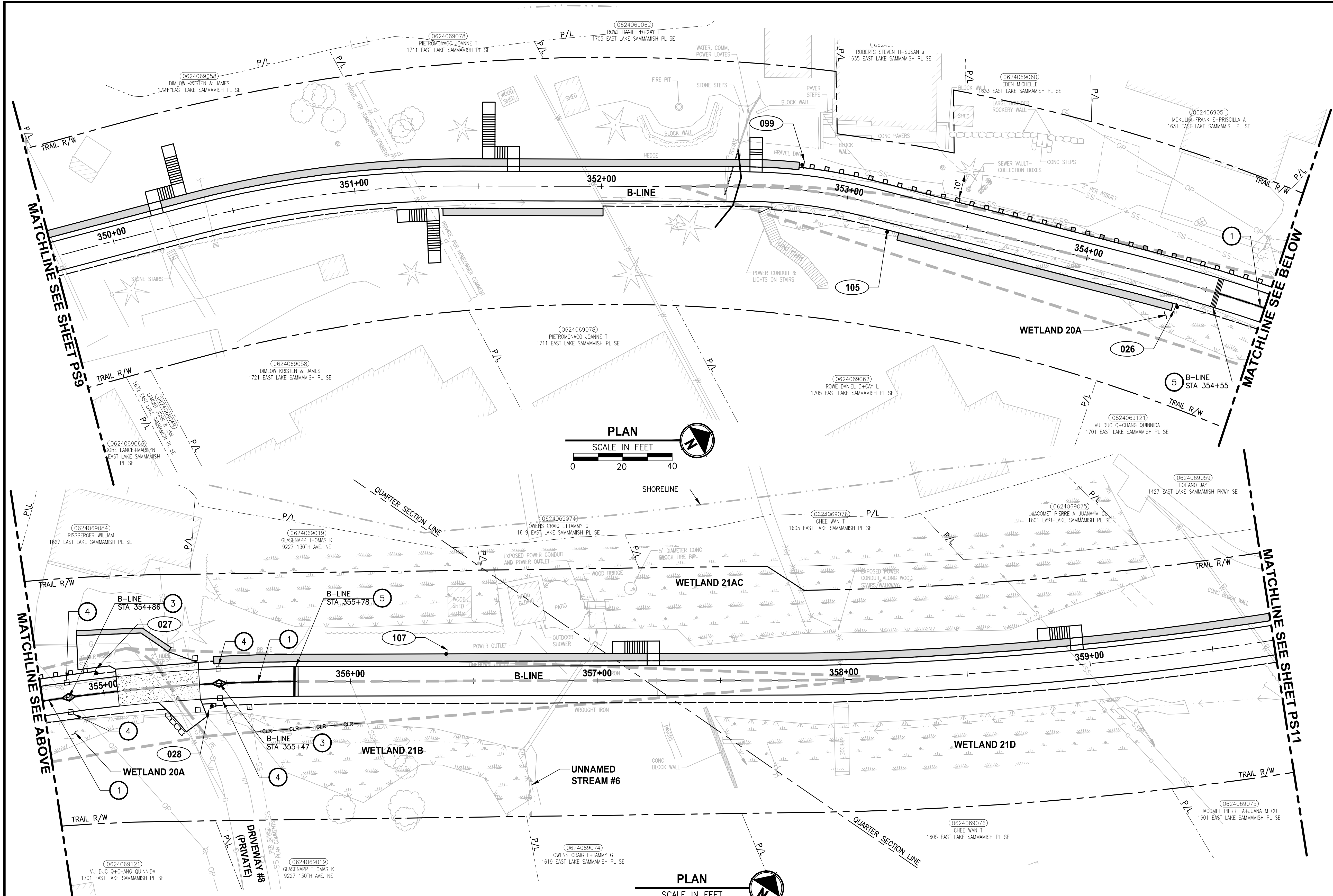
SAMMAMISH, WA

PAVEMENT MARKING AND SIGNING PLAN

SHEET NO.
130 OF 190

PS9

PLOTTED BY: purgubut DATE: Friday, November 13, 2020 9:55:34 AM
PATH: U:\PSO\Projects\Clients\1521-KingCo\554-1521-075-ELST\995vcs\CADD\Phase 19\T03 Civil\Draw-Phase1\



**PAVEMENT MARKING AND SIGNING
CONSTRUCTION NOTES:**

1. INSTALL BOLLARD STRIPING PER DETAIL **1** **MD4** **1** **MD6**
2. INSTALL PET WASTE STATION. SEE APPENDIX B OF SPECIFICATIONS FOR DETAILS.
3. INSTALL TOP LOCKING REMOVABLE BOLLARD PER DETAILS ON SHEET MD5.
4. INSTALL FIXED BOLLARDS PER DETAILS ON SHEET MD7.
5. CONCRETE WARNING BAND PER DETAIL **2** **MD6**
6. NOT USED.
7. NOT USED.
8. NOT USED.
9. INSTALL TRASH RECEPTACLE, SEE APPENDIX B OF SPECIFICATIONS.
10. NOT USED.
11. NOT USED.

LEGEND:

XXX SIGN, SEE SHEET PS13 FOR SIGN SCHEDULE.

14.5' X 295' SIGHT DISTANCE TRIANGLE FOR STOP CONTROLLED INTERSECTION ON DRIVEWAYS PER COS STD FIG 02-19A

GENERAL NOTES:

1. FOR SIGN REMOVAL, SEE SP SHEETS.
2. STATION CALLOUTS ARE MEASURED TO THE CENTER OF WARNING BAND AND BOLLARDS.

CITY OF SAMMAMISH APPROVAL

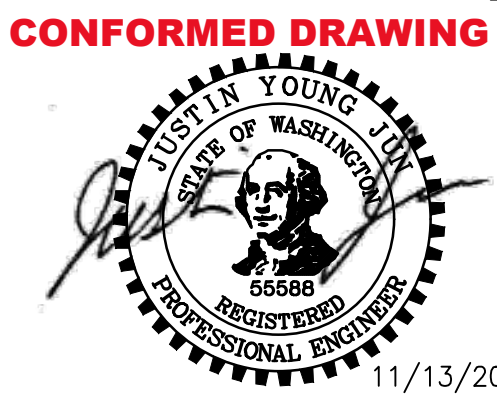
PLANNING DEPT. APPROVAL
BY: ABaty
DATE: 06/10/2021
Community Development

CITY OF SAMMAMISH PUBLIC WORKS DEVELOPMENT REVIEW
These drawings have been reviewed for compliance with City of Sammamish Clearing and Grading and Stormwater requirements and also in accordance with the requirements as established in the Settlement Agreement between King County vs. City of Sammamish No. C17-0921 JCC and King County vs. City of Sammamish No. 17-2-28922-7 SEA and have been deemed ACCEPTABLE. The reviewer accepts no responsibility for any errors and/or omissions made by the preparer of these drawings.
10 June 2021

REVISIONS	DATE	BY	DESIGNED
			J. JUN
			DRAWN B. PURGANAN
			CHECKED Y. HO
			APPROVED J. BAILEY

**ONE INCH AT FULL SCALE.
IF NOT, SCALE ACCORDINGLY.**

FILE NAME
BL1521075P19T03PS-02
JOB No.
554-1521-075 P19 T03
DATE
NOVEMBER 2020



Parametrix
ENGINEERING · PLANNING · ENVIRONMENTAL SCIENCES

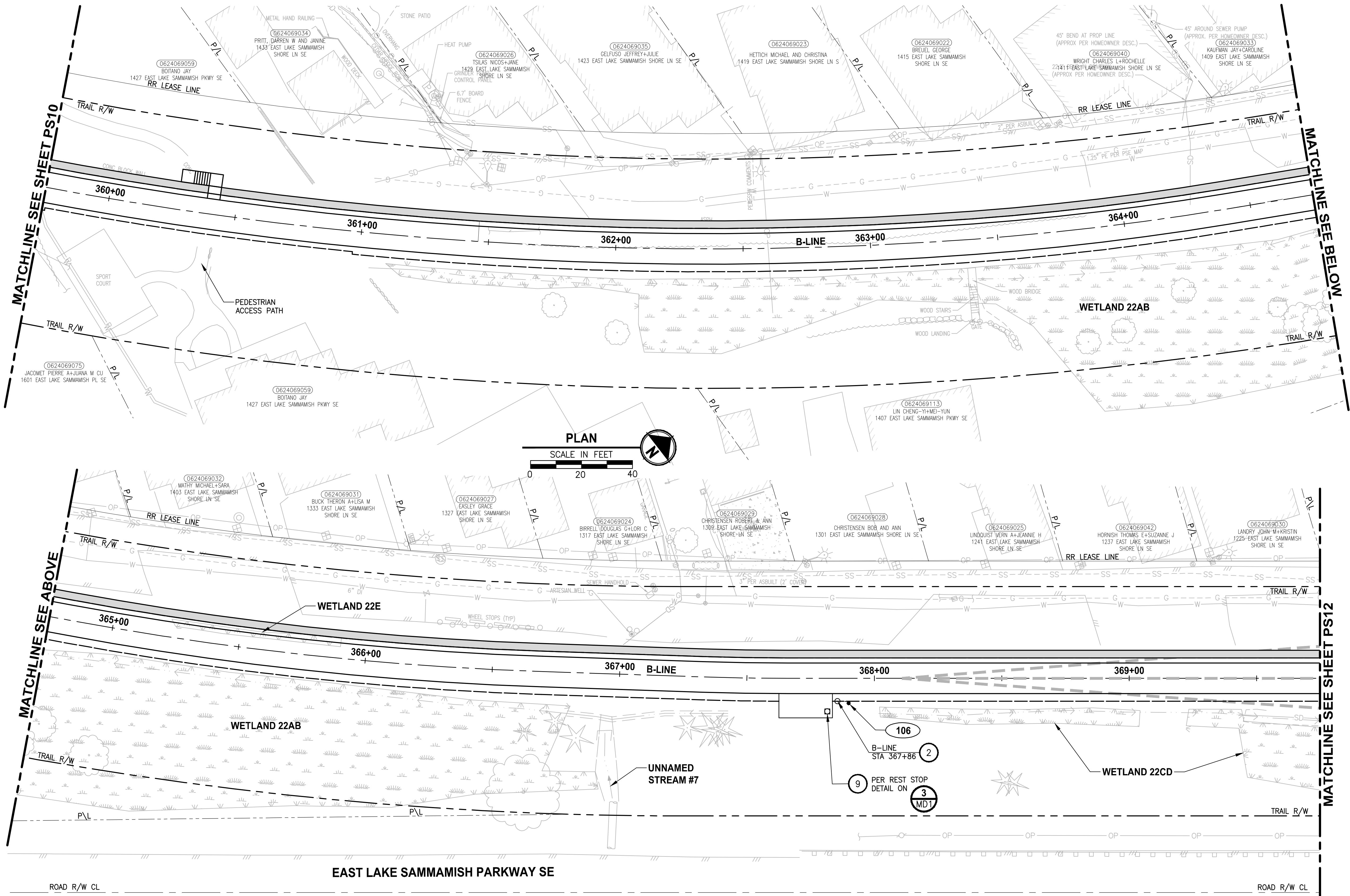
719 2ND AVENUE, SUITE 200 | SEATTLE, WA 98104
P 206.394.3700
WWW.PARAMETRIX.COM

PROJECT NAME
**EAST LAKE SAMMAMISH
MASTER PLAN TRAIL
SOUTH SAMMAMISH SEGMENT B - PHASE 1**
SAMMAMISH, WA

**PAVEMENT MARKING AND
SIGNING PLAN**

SHEET NO.
131 OF 190
PS10

PATH: U:\PSG\Projects\Clients\1521-KingCo\554-1521-075-ELST\99Svcs\CADD\Phase 19\T03_Civil\Draw-Phase1\ PLOTTED BY: purgubut DATE: Friday, November 13, 2020 9:55:49 AM LAYOUT: PS11



PAVEMENT MARKING AND SIGNING CONSTRUCTION NOTES:

1. INSTALL BOLLARD STRIPING PER DETAIL **1** **MD4** **1** **MD6**
2. INSTALL PET WASTE STATION. SEE APPENDIX B OF SPECIFICATIONS FOR DETAILS.
3. INSTALL TOP LOCKING REMOVABLE BOLLARD PER DETAILS ON SHEET MD5.
4. INSTALL FIXED BOLLARDS PER DETAILS ON SHEET MD7.
5. CONCRETE WARNING BAND PER DETAIL **2** **MD6**
6. NOT USED.
7. NOT USED.
8. NOT USED.
9. INSTALL TRASH RECEPTACLE, SEE APPENDIX B OF SPECIFICATIONS.
10. NOT USED.
11. NOT USED.

LEGEND:

XXX SIGN, SEE SHEET PS13 FOR SIGN SCHEDULE.

14.5' X 29.5' SIGHT DISTANCE TRIANGLE FOR STOP CONTROLLED INTERSECTION ON DRIVEWAYS PER COS STD FIG 02-19A

GENERAL NOTES:

1. FOR SIGN REMOVAL, SEE SP SHEETS.
2. STATION CALLOUTS ARE MEASURED TO THE CENTER OF WARNING BAND AND BOLLARDS.

CITY OF SAMMAMISH APPROVAL

PLANNING DEPT. APPROVAL
BY: ABaty
DATE: 06/10/2021

Community Development

CITY OF SAMMAMISH PUBLIC WORKS DEVELOPMENT REVIEW

These drawings have been reviewed for compliance with City of Sammamish Clearing and Grading and Stormwater requirements and also in accordance with the requirements as established in the Settlement Agreement between King County vs. City of Sammamish No. C17-0921 JCC and King County vs. City of Sammamish No. 17-2-28922-7 SEA and have been deemed ACCEPTABLE. The reviewer accepts no responsibility for any errors and/or omissions made by the preparer of these drawings.
10 June 2021

REVISIONS	DATE	BY	DESIGNED
			J. JUN
			DRAWN B. PURGANAN
			CHECKED Y. HO
			APPROVED J. BAILEY

ONE INCH AT FULL SCALE.
IF NOT, SCALE ACCORDINGLY.

FILE NAME
BL1521075P19T03PS-02

JOB No.
554-1521-075 P19 T03

DATE
NOVEMBER 2020

CONFORMED DRAWING

PLANNING DEPT. APPROVAL
BY: ABaty
DATE: 06/10/2021

Community Development

CITY OF SAMMAMISH PUBLIC WORKS DEVELOPMENT REVIEW

These drawings have been reviewed for compliance with City of Sammamish Clearing and Grading and Stormwater requirements and also in accordance with the requirements as established in the Settlement Agreement between King County vs. City of Sammamish No. C17-0921 JCC and King County vs. City of Sammamish No. 17-2-28922-7 SEA and have been deemed ACCEPTABLE. The reviewer accepts no responsibility for any errors and/or omissions made by the preparer of these drawings.
10 June 2021

Parametrix

ENGINEERING · PLANNING · ENVIRONMENTAL SCIENCES

719 2ND AVENUE, SUITE 200 | SEATTLE, WA 98104
P 206.394.3700
WWW.PARAMETRIX.COM

PROJECT NAME

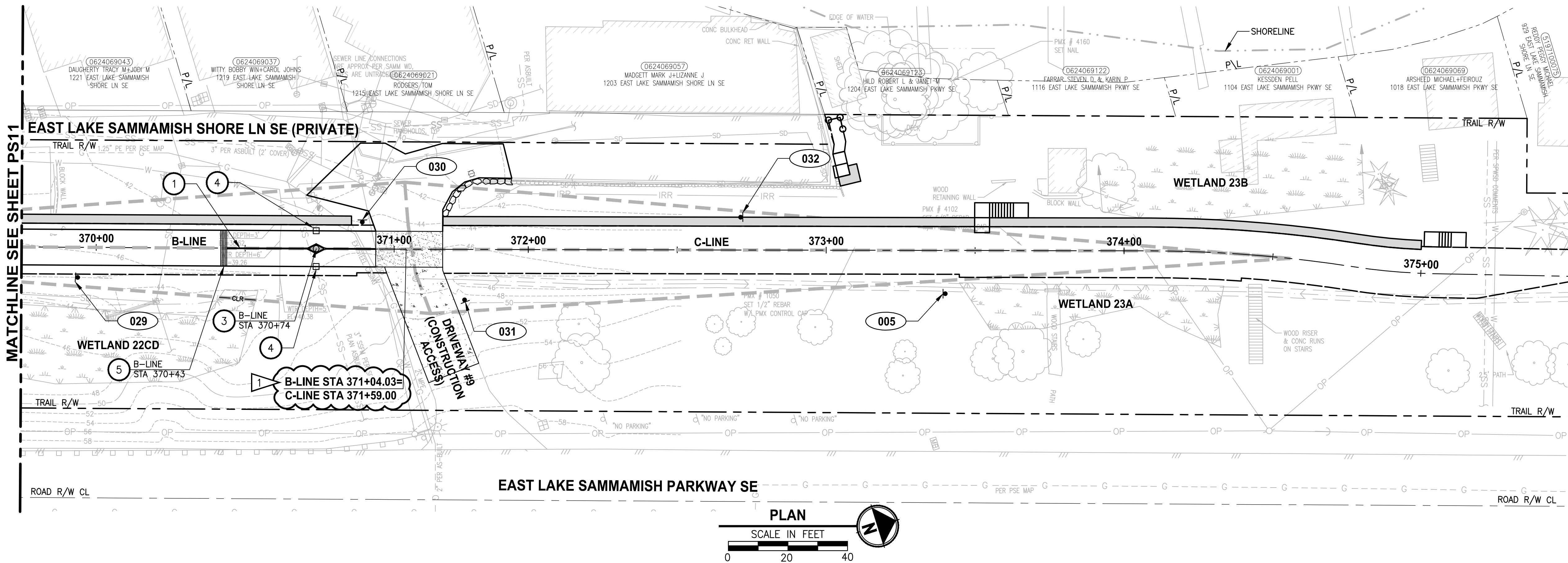
EAST LAKE SAMMAMISH
MASTER PLAN TRAIL
SOUTH SAMMAMISH SEGMENT B - PHASE 1
SAMMAMISH, WA

PAVEMENT MARKING AND
SIGNING PLAN

SHEET NO.
132 OF 190

PS11

PATH: U:\PSO\Projects\Clients\1521-KingCo\1521-075-ELST\99Svcs\CADD\Phase 19\T03_Civil\DWG-Phase1\ LAYOUT: PS12 PLOTTED BY: tsunmic DATE: Tuesday, February 9, 2021 8:50:18 AM



PAVEMENT MARKING AND SIGNING CONSTRUCTION NOTES:

- 1. INSTALL BOLLARD STRIPING PER DETAIL 1 MD4 1 MD6
- 2. INSTALL PET WASTE STATION. SEE APPENDIX B OF SPECIFICATIONS FOR DETAILS.
- 3. INSTALL TOP LOCKING REMOVABLE BOLLARD PER DETAILS ON SHEET MD5.
- 4. INSTALL FIXED BOLLARDS PER DETAILS ON SHEET MD7.
- 5. CONCRETE WARNING BAND PER DETAIL 2 MD6
- 6. NOT USED.
- 7. NOT USED.
- 8. NOT USED.
- 9. INSTALL TRASH RECEPTACLE, SEE APPENDIX B OF SPECIFICATIONS.
- 10. NOT USED.
- 11. NOT USED.

LEGEND:

- XXX SIGN, SEE SHEET PS13 FOR SIGN SCHEDULE.
- 14.5' X 295' SIGHT DISTANCE TRIANGLE FOR STOP CONTROLLED INTERSECTION ON DRIVEWAYS PER COS STD FIG 02-19A

GENERAL NOTES:

- 1. FOR SIGN REMOVAL, SEE SP SHEETS.
- 2. STATION CALLOUTS ARE MEASURED TO THE CENTER OF WARNING BAND AND BOLLARDS.

CITY OF SAMMAMISH APPROVAL

PLANNING DEPT. APPROVAL
BY: ABaty
DATE: 06/10/2021

Community Development
These drawings have been reviewed for compliance with City of Sammamish Clearing and Grading and Stormwater requirements and also in accordance with the requirements as established in the Settlement Agreement between King County vs. City of Sammamish No. C17-0921 JCC and King County vs. City of Sammamish No. 17-2-28922-7 SEA and have been deemed ACCEPTABLE. The reviewer accepts no responsibility for any errors and/or omissions made by the preparer of these drawings.
10 June 2021

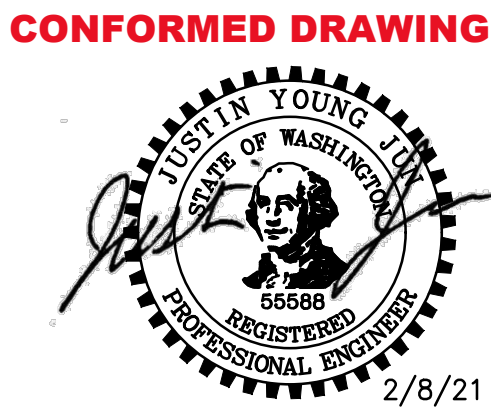
REVISIONS	DATE	BY	DESIGNED
1 ADDENDUM #1	2/8/21	MT	J. JUN
			DRAWN B. PURGANAN
			CHECKED Y. HO
			APPROVED J. BAILEY

ONE INCH AT FULL SCALE. IF NOT, SCALE ACCORDINGLY

FILE NAME
BL1521075P19T03PS-03

JOB No.
554-1521-075 P19 T03

DATE
NOVEMBER 2020



Parametrix

ENGINEERING · PLANNING · ENVIRONMENTAL SCIENCES

719 2ND AVENUE, SUITE 200 | SEATTLE, WA 98104
P 206.394.3700
WWW.PARAMETRIX.COM

PROJECT NAME

EAST LAKE SAMMAMISH
MASTER PLAN TRAIL
SOUTH SAMMAMISH SEGMENT B - PHASE 1
SAMMAMISH, WA

PAVEMENT MARKING AND SIGNING PLAN

SHEET NO.
133 OF 190

PS1

PATH: U:\PSO\Projects\Clients\1521-KingCo\554-1521-075-ELST\99Svcs\CADD\Phase 19\T03 Civil\DWG-Phase1\ LAYOUT: PS13 PLOTTED BY: purgabaut DATE: Friday, March 19, 2021 12:48:15 PM

SIGN SCHEDULE

SIGN NUMBER	LOCATION			DESCRIPTION	MUTCD SIGN	SIGN SIZE	POST SIZE/TYPE	REMARK
	LINE	STATION	OFFSET					
001	B-LINE	294+94	10.1' RT	INTERSECTION WARNING SYMBOL	W2-1	18" X 18"	2" STEEL SQUARE*	NEW SIGN AND POST
002	B-LINE	300+24	10.1' LT	INTERSECTION WARNING SYMBOL	W2-1	18" X 18"	2" STEEL SQUARE*	NEW SIGN AND POST
003	B-LINE	298+97	14.0' RT	STOP	R1-1	30" X 30"	2" STEEL SQUARE*	NEW SIGN AND POST
004	B-LINE	298+41	9.0' LT	STOP	R1-1	30" X 30"	2" STEEL SQUARE*	NEW SIGN AND POST
005	C-LINE	373+40	14.5' RT	PATH NARROWS	W5-4a	18" X 18"	2" STEEL SQUARE*	NEW SIGN AND POST
009	B-LINE	313+72	10.1' RT	INTERSECTION WARNING SYMBOL	W2-1	18" X 18"	2" STEEL SQUARE*	NEW SIGN AND POST
010	B-LINE	314+78	9.0' RT	STOP	R1-1	30" X 30"	2" STEEL SQUARE*	NEW SIGN AND POST
011	B-LINE	314+49	13.0' LT	STOP	R1-1	30" X 30"	2" STEEL SQUARE*	NEW SIGN AND NEW POST MOUNTED ON FACE OF WALL. SEE SIGN WALL MOUNT DETAIL ON THIS SHEET.
012	B-LINE	319+30	10.1' RT	INTERSECTION WARNING SYMBOL	W2-1	18" X 18"	2" STEEL SQUARE*	NEW SIGN AND POST
013	B-LINE	320+18	8.0' LT	STOP	R1-1	30" X 30"	2" STEEL SQUARE*	NEW SIGN AND POST
014	B-LINE	320+59	9.0' RT	STOP	R1-1	30" X 30"	2" STEEL SQUARE*	NEW SIGN AND POST
015	B-LINE	320+64	22.0' LT	STOP	R1-1	30" X 30"	2" STEEL SQUARE*	NEW SIGN AND POST
016	B-LINE	321+64	10.1' LT	INTERSECTION WARNING SYMBOL	W2-1	18" X 18"	2" STEEL SQUARE*	NEW SIGN AND POST
017	B-LINE	324+45	10.1' RT	INTERSECTION WARNING SYMBOL	W2-1	18" X 18"	2" STEEL SQUARE*	NEW SIGN AND POST
018	B-LINE	325+74	9.0' LT	STOP	R1-1	30" X 30"	2" STEEL SQUARE*	NEW SIGN AND POST
019	B-LINE	325+94	10' RT	STOP	R1-1	30" X 30"	2" STEEL SQUARE*	NEW SIGN AND POST
020	B-LINE	327+37	10.1' LT	INTERSECTION WARNING SYMBOL	W2-1	18" X 18"	2" STEEL SQUARE*	NEW SIGN AND POST
021	B-LINE	336+75	10.1' RT	INTERSECTION WARNING SYMBOL	W2-1	18" X 18"	2" STEEL SQUARE*	NEW SIGN AND POST
022	B-LINE	337+71	9.0' LT	STOP	R1-1	30" X 30"	2" STEEL SQUARE*	NEW SIGN AND POST
023	B-LINE	338+02	22.0' LT	STOP	R1-1	30" X 30"	2" STEEL SQUARE*	NEW SIGN AND POST
024	B-LINE	338+55	9.0' RT	STOP	R1-1	30" X 30"	2" STEEL SQUARE*	NEW SIGN AND POST
025	B-LINE	339+41	11.0' LT	INTERSECTION WARNING SYMBOL	W2-1	18" X 18"	2" STEEL SQUARE*	NEW SIGN AND POST
026	B-LINE	354+41	10.0' RT	INTERSECTION WARNING SYMBOL	W2-1	18" X 18"	2" STEEL SQUARE*	NEW SIGN AND POST
027	B-LINE	354+98	8.25' LT	STOP	R1-1	30" X 30"	2" STEEL SQUARE*	NEW SIGN AND POST
028	B-LINE	355+43	9.0' RT	STOP	R1-1	30" X 30"	2" STEEL SQUARE*	NEW SIGN AND POST
029	B-LINE	369+94	10.1' RT	INTERSECTION WARNING SYMBOL	W2-1	18" X 18"	2" STEEL SQUARE*	NEW SIGN AND POST
030	B-LINE	370+89	9.0' LT	STOP	R1-1	30" X 30"	2" STEEL SQUARE*	NEW SIGN AND POST
031	C-LINE	371+78	16.0' RT	STOP	R1-1	30" X 30"	2" STEEL SQUARE*	NEW SIGN AND POST
032	C-LINE	372+71	11.0' LT	INTERSECTION WARNING SYMBOL	W2-1	18" X 18"	2" STEEL SQUARE*	NEW SIGN AND NEW POST MOUNTED ON FACE OF WALL. SEE SIGN WALL MOUNT DETAIL ON THIS SHEET.
094	B-LINE	300+24	10.1' LT	WATCH FOR PEDS	W8-3 (MOD)	18" X 18"	2" STEEL SQUARE*	NEW SIGN AND POST. SEE SIGN DETAIL W8-3 (MOD). SIGN ON BACK OF SIGN 002.
095	B-LINE	298+25	10.1' RT	WATCH FOR PEDS	W8-3 (MOD)	18" X 18"	2" STEEL SQUARE*	NEW SIGN AND POST. SEE SIGN DETAIL W8-3 (MOD)
096	B-LINE	327+34	10.1' RT	WATCH FOR PEDS	W8-3 (MOD)	18" X 18"	2" STEEL SQUARE*	NEW SIGN AND POST. SEE SIGN DETAIL W8-3 (MOD)
097	B-LINE	334+08	10.1' LT	WATCH FOR PEDS	W8-3 (MOD)	18" X 18"	2" STEEL SQUARE*	NEW SIGN AND POST. SEE SIGN DETAIL W8-3 (MOD)
098	B-LINE	342+92	10.1' RT	WATCH FOR PEDS	W8-3 (MOD)	18" X 18"	2" STEEL SQUARE*	NEW SIGN AND POST. SEE SIGN DETAIL W8-3 (MOD)
099	B-LINE	352+80	10.1' LT	WATCH FOR PEDS	W8-3 (MOD)	18" X 18"	2" STEEL SQUARE*	NEW SIGN AND POST. SEE SIGN DETAIL W8-3 (MOD)
102	B-LINE	285+62	9.75' RT	PET LAW	CUSTOM	N/A	2" STEEL SQUARE*	NEW SIGN AND POST. SIGN TO BE PROVIDED BY THE OWNER.
103	B-LINE	285+62	9.75' RT	PET LAW	CUSTOM	N/A	N/A	NEW SIGN. SIGN TO BE PROVIDED BY OWNER. SIGN ON BACK OF SIGN 102.
104	B-LINE	315+83	11.0' LT	INTERSECTION WARNING SYMBOL	W2-1	18" X 18"	2" STEEL SQUARE*	NEW SIGN AND NEW POST MOUNTED ON FACE OF WALL. SEE SIGN WALL MOUNT DETAIL ON THIS SHEET.
105	B-LINE	353+19	9.75' RT	PET LAW	CUSTOM	N/A	2" STEEL SQUARE*	NEW SIGN AND POST. SIGN TO BE PROVIDED BY THE OWNER.
106	B-LINE	367+90	9.75' RT	ELST TRAIL RULES	CUSTOM	N/A	2" STEEL SQUARE*	NEW SIGN AND POST. SIGN TO BE PROVIDED BY THE OWNER.
107	B-LINE	356+39	11.0' LT	INTERSECTION WARNING SYMBOL	W2-1	18" X 18"	2" STEEL SQUARE*	NEW SIGN AND NEW POST MOUNTED ON FACE OF WALL. SEE SIGN WALL MOUNT DETAIL ON THIS SHEET.
117	B-LINE	298+97	14.0' RT	LIMITED SIGHT DISTANCE	CUSTOM	30" X 30"	N/A	NEW SIGN ON SAME POST AS SIGN 003, BELOW SIGN 003. SEE SIGN DETAIL CUSTOM "LIMITED SIGHT DISTANCE"

* SEE DETAILS 3-7 ON SHEET MD8 FOR SIGN SUPPORT DETAILS.

GENERAL NOTE:

- FOR ALL SIGNS NEAR THE WALLS, COORDINATE DURING CONSTRUCTION SEQUENCING TO ENSURE CONSTRUCTION OF THE SIGN FOUNDATIONS DO NOT UNDERMINE THE WALLS.



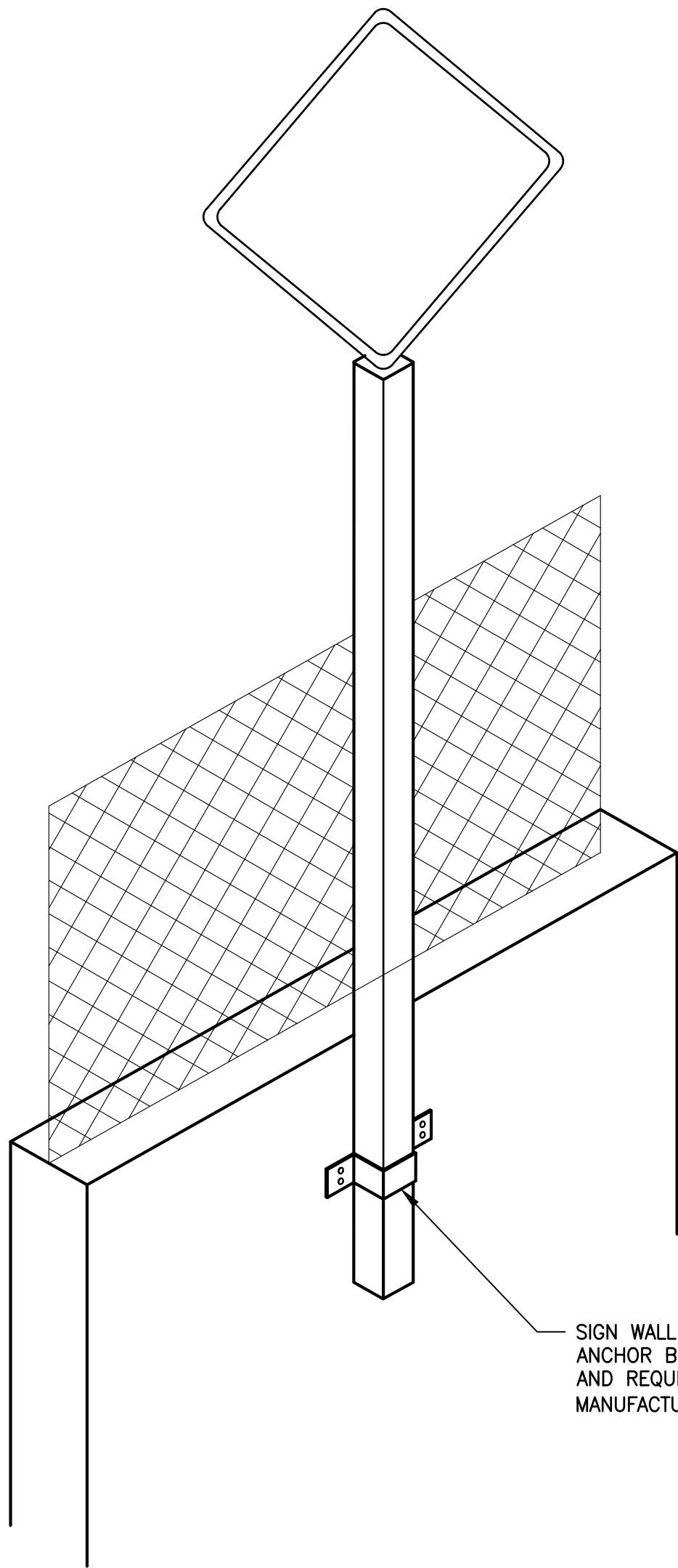
W8-3 (MOD)
B/Y



CUSTOM "LIMITED SIGHT DISTANCE"
B/Y

SIGN DETAILS

NO SCALE

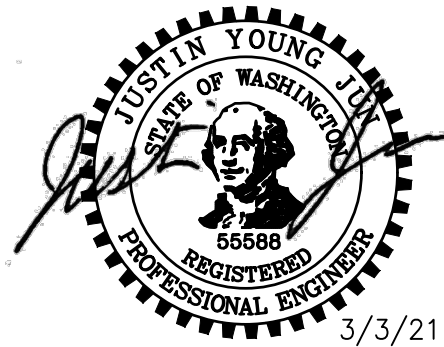


SIGN WALL MOUNT BRACKET AND ANCHOR BOLT MATERIALS, DIMENSIONS, AND REQUIREMENTS SHALL BE PER MANUFACTURER'S RECOMMENDATIONS

SIGN WALL MOUNT
DETAIL

NOT TO SCALE

CONFORMED DRAWING



3/3/21

ONE INCH AT FULL SCALE.
IF NOT, SCALE ACCORDINGLY

FILE NAME
BL1521075P19T03PS-04
JOB No.
554-1521-075 P19 T03
DATE
NOVEMBER 2020

Parametrix

ENGINEERING · PLANNING · ENVIRONMENTAL SCIENCES

719 2ND AVENUE, SUITE 200 | SEATTLE, WA 98104
P 206.394.3700
WWW.PARAMETRIX.COM

PROJECT NAME

EAST LAKE SAMMAMISH
MASTER PLAN TRAIL
SOUTH SAMMAMISH SEGMENT B - PHASE 1
SAMMAMISH, WA

SIGN SCHEDULE

SHEET NO.
134 OF 190

PS13

CITY OF SAMMAMISH APPROVAL

PLANNING DEPT. APPROVAL

BY: ABaty
DATE: 06/10/2021

Community Development

CITY OF SAMMAMISH PUBLIC WORKS
DEVELOPMENT REVIEW

These drawings have been reviewed for compliance with City of Sammamish Clearing and Grading and Stormwater requirements and also in accordance with the requirements as established in the Settlement Agreement between King County vs. City of Sammamish No. C17-0921 JCC and King County vs. City of Sammamish No. 17-2-28922-7 SEA and have been deemed ACCEPTABLE. The reviewer accepts no responsibility for any errors and/or omissions made by the preparer of these drawings.
10 June 2021