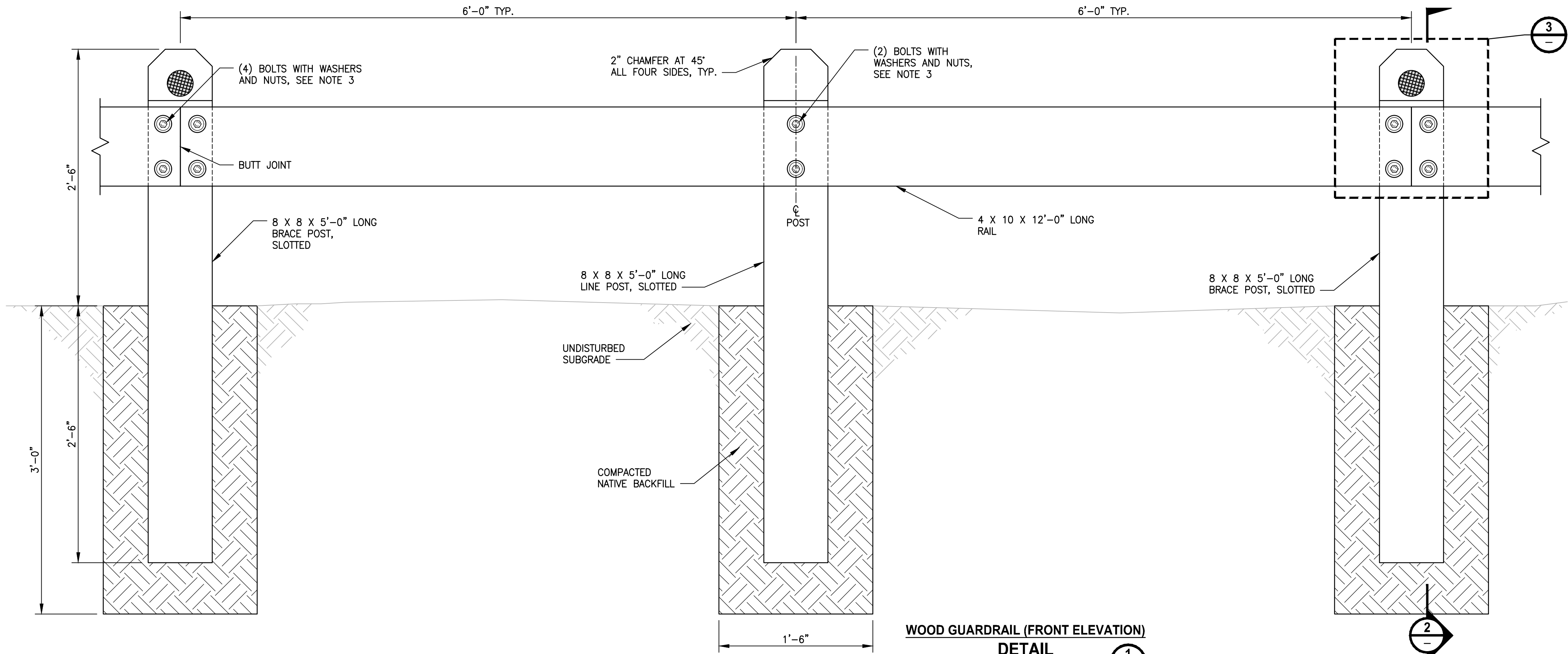




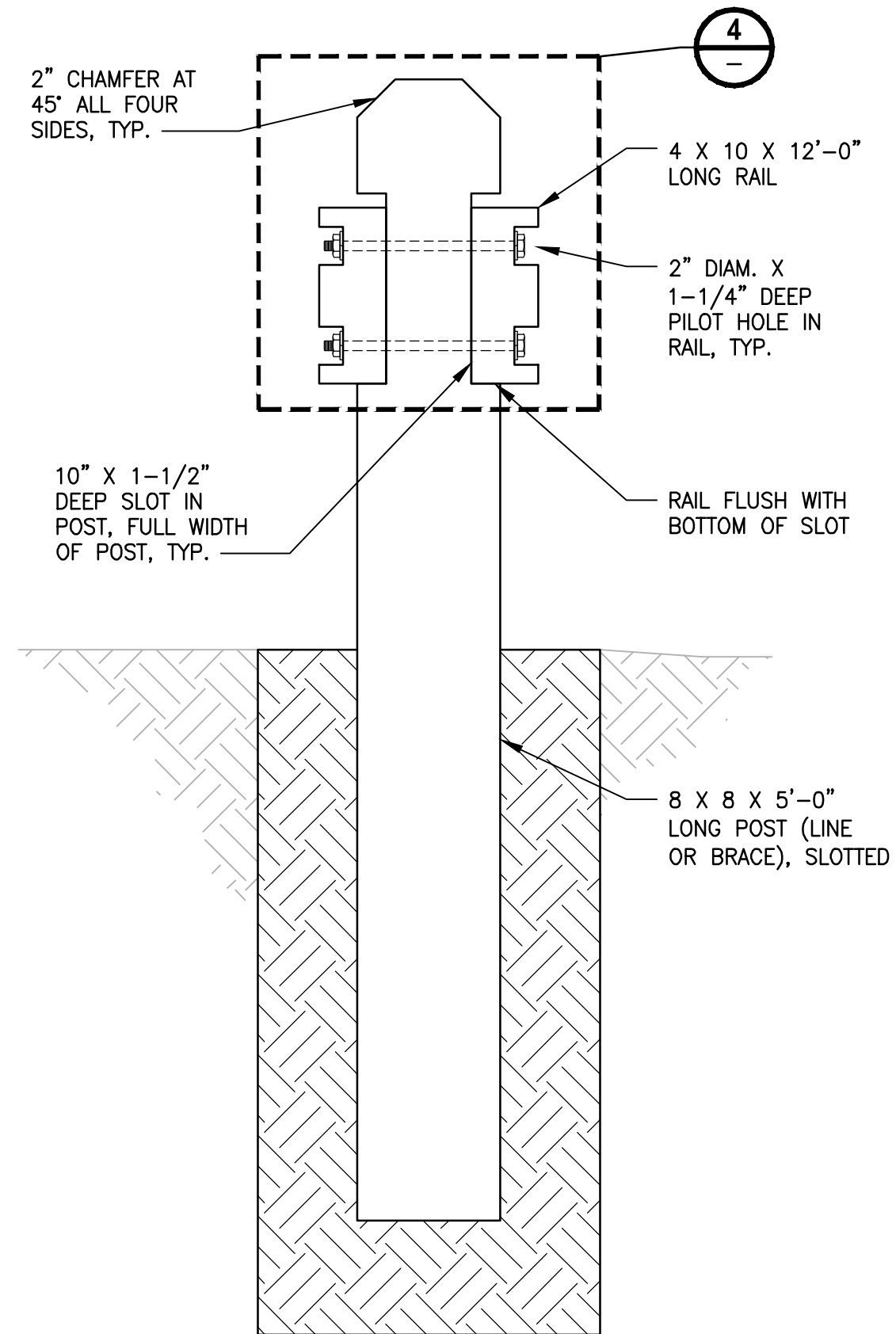
PATH: U:\PSD\Projects\Clients\1521-KingCo\564-1521-075-ELST\98Sves\CADD\Phase 19\T03 Civil\DWG-Phase1\ PLOTTED BY: purgaban DATE: Friday, November 13, 2020 9:56:39 AM LAYOUT: MD2



WOOD GUARDRAIL (FRONT ELEVATION)

DETAIL 1

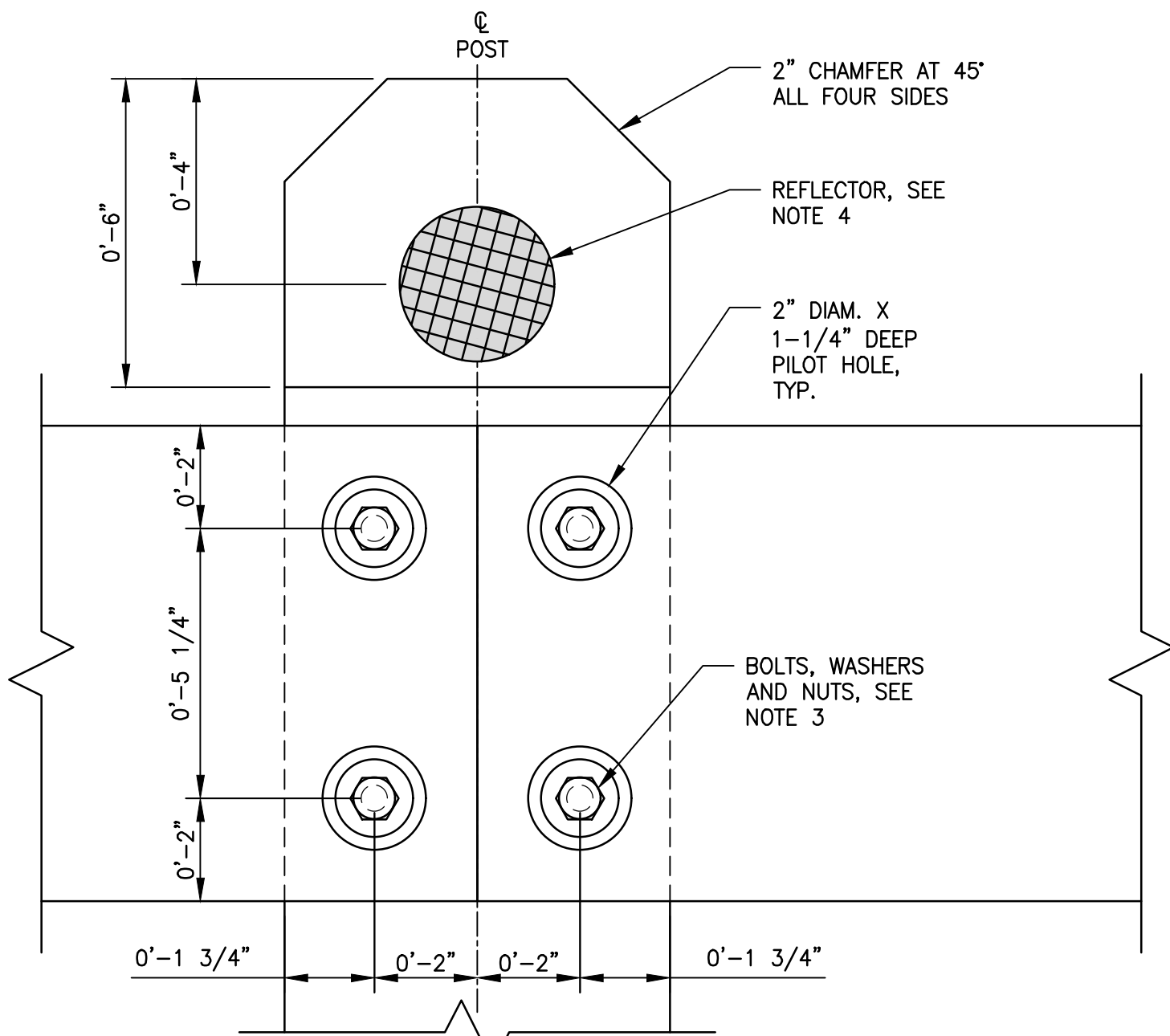
NOT TO SCALE



WOOD GUARDRAIL (SIDE ELEVATION)

DETAIL 2

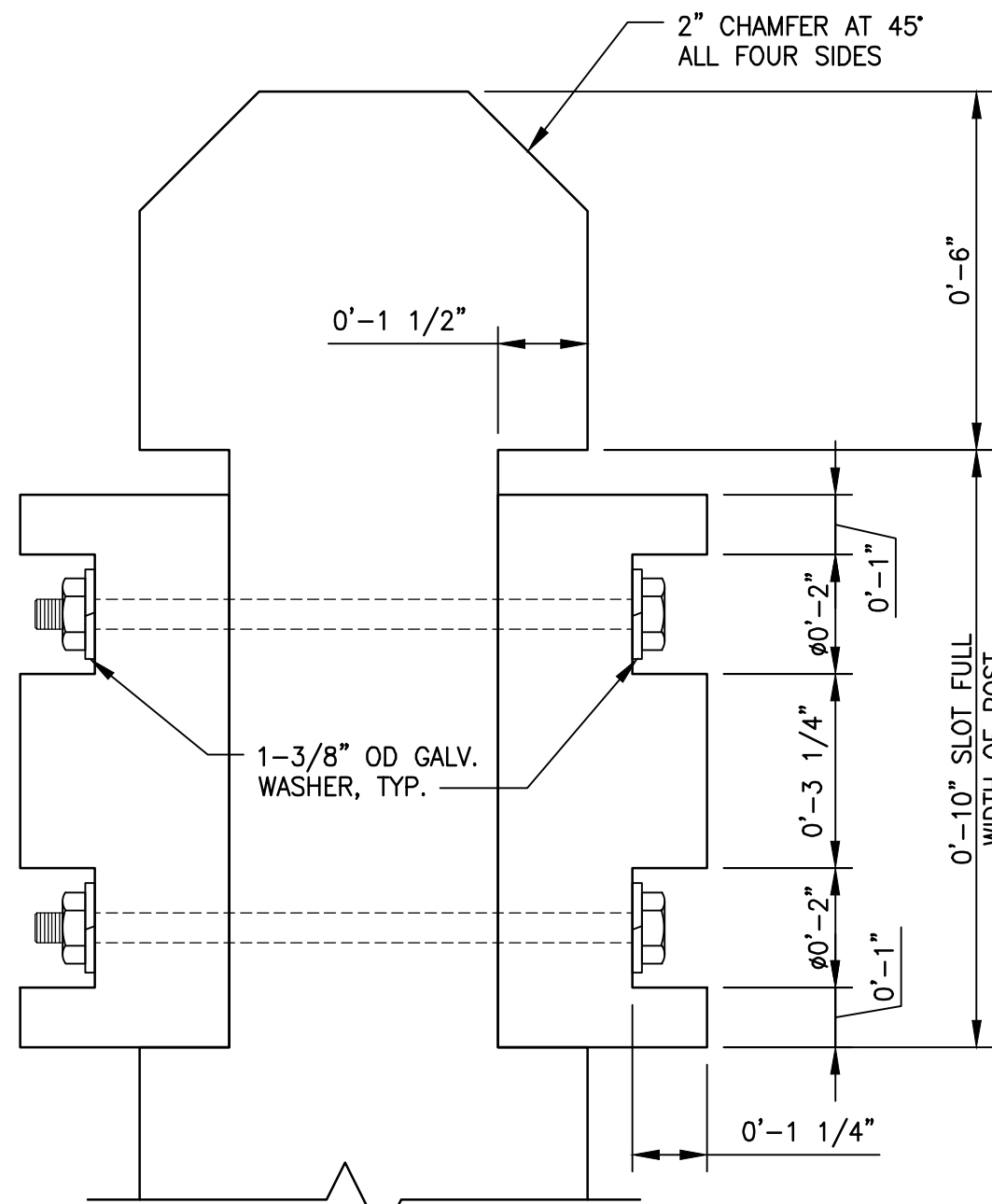
NOT TO SCALE



ASSEMBLY (DETAIL)

DETAIL 3

NOT TO SCALE

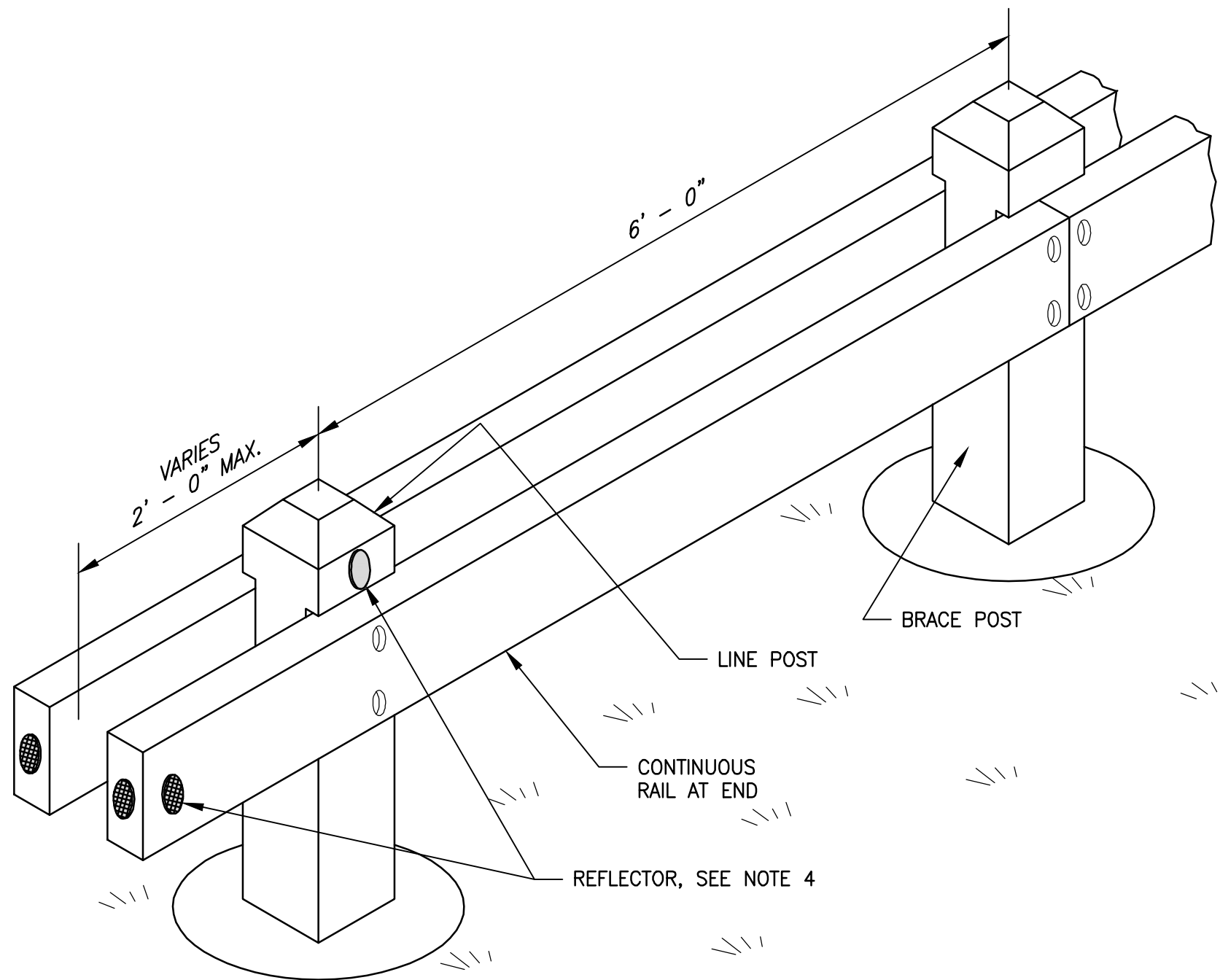


ASSEMBLY (ELEVATION)

DETAIL 4

NOT TO SCALE

CONFORMED DRAWING



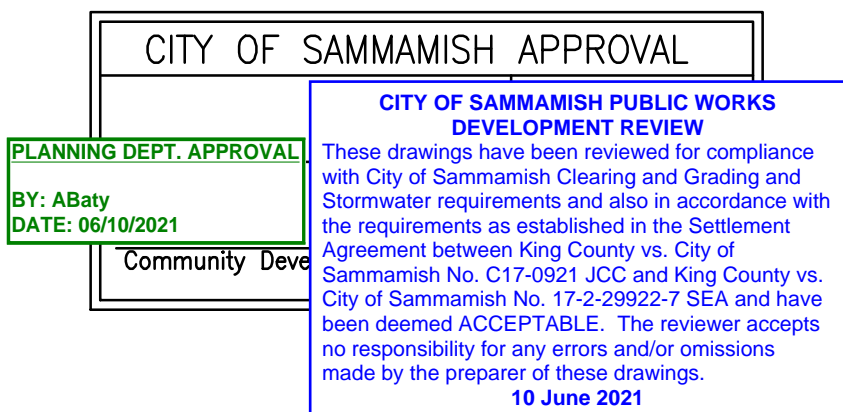
END RAIL (ISOMETRIC)

DETAIL 5

NOT TO SCALE

NOTES:

- ALL BOARDS AND POSTS SHALL BE PRESSURE TREATED HEMLOCK, PRESSURE TREATED DOUGLAS FIR, OR UNTREATED CEDAR LUMBER. TREATMENT SHALL CONFORM TO WSDOT STANDARD SPECIFICATION 9-09.3.
- SET POSTS PLUMB.
- BOLTS SHALL BE 5/8" X 10" LONG GALV. HEX BOLT AND NUT WITH (2) 1-3/8" OUTSIDE DIAMETER GALV. WASHERS, EACH SIDE.
- INSTALL 3" DIAMETER RED REFLECTIVE BUTTONS USING SCREWS AND BOLTS ON FRONT AND BACK OF EVERY OTHER POST AND ON END RAIL AS SHOWN IN PLANS.



REVISIONS	DATE	BY	DESIGNED
			M. TSUN
			DRAWN B. PURGANAN
			CHECKED Y. HO
			APPROVED J. BAILEY

ONE INCH AT FULL SCALE. IF NOT, SCALE ACCORDINGLY
FILE NAME BL1521075P19T03MD-01
JOB No. 554-1521-075 P19 T03
DATE NOVEMBER 2020



<b>Parametrix</b> ENGINEERING · PLANNING · ENVIRONMENTAL SCIENCES
719 2ND AVENUE, SUITE 200   SEATTLE, WA 98104 P 206.394.3700 WWW.PARAMETRIX.COM

PROJECT NAME
<b>EAST LAKE SAMMAMISH MASTER PLAN TRAIL SOUTH SAMMAMISH SEGMENT B - PHASE 1</b>
SAMMAMISH, WA

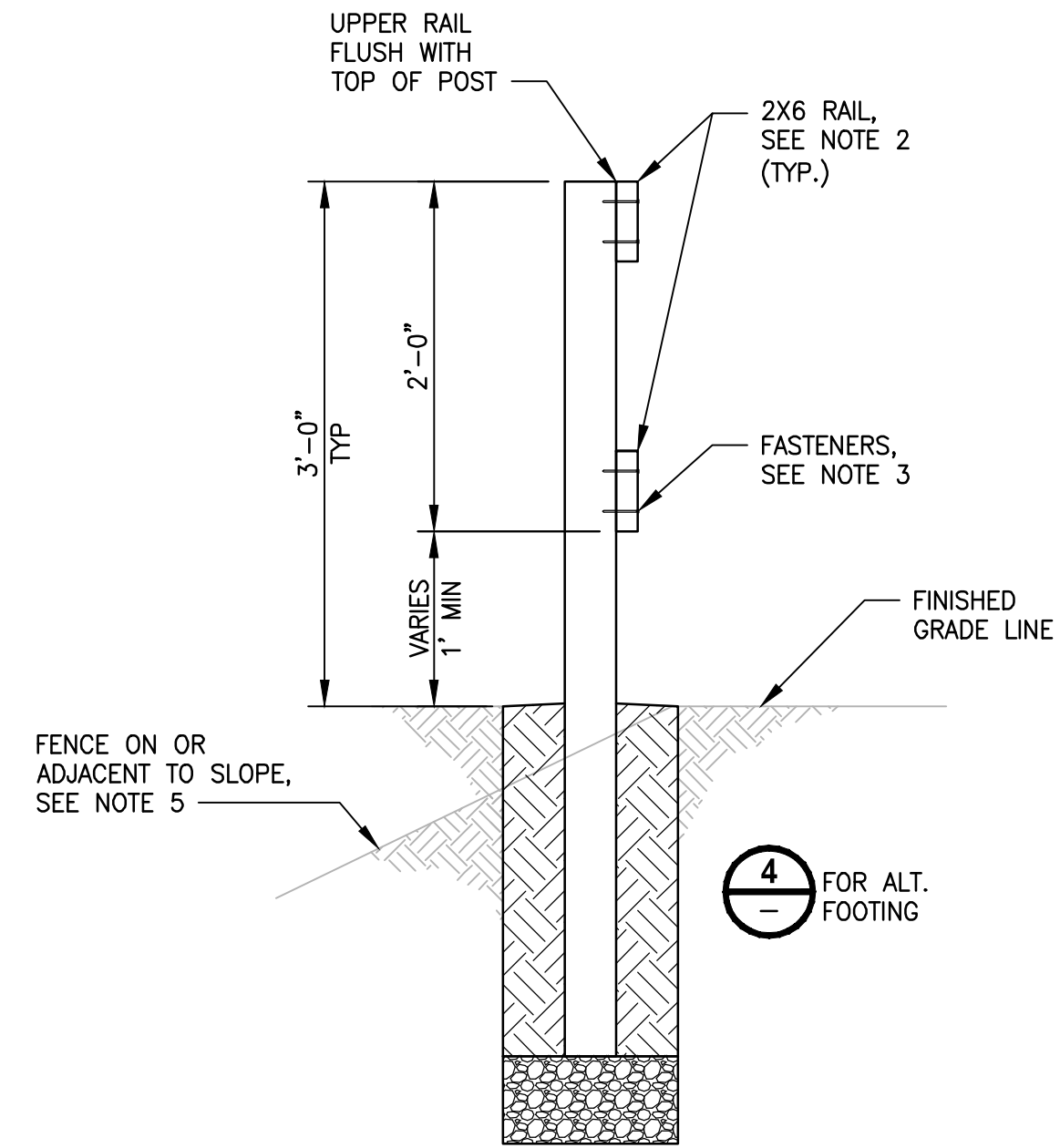
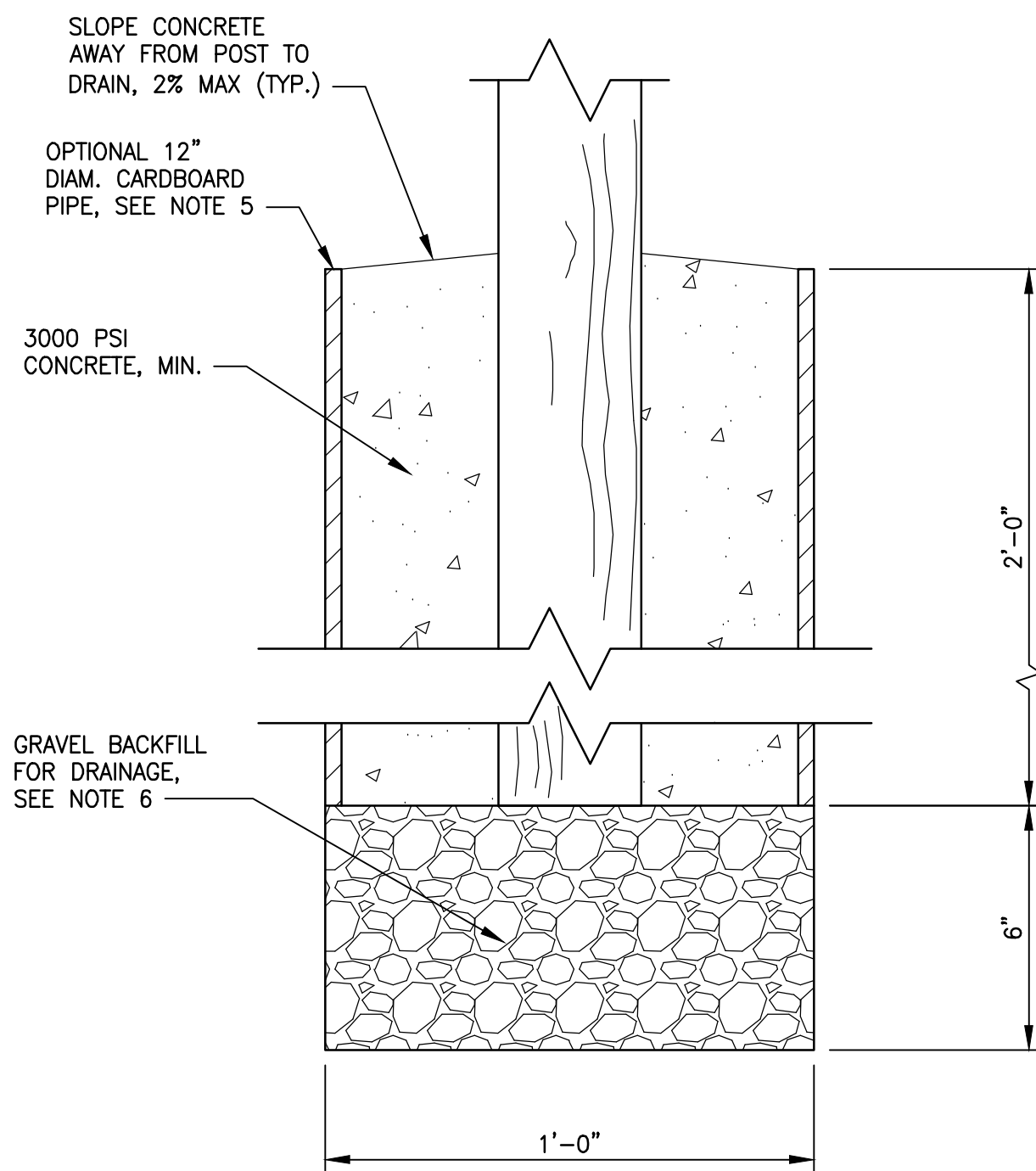
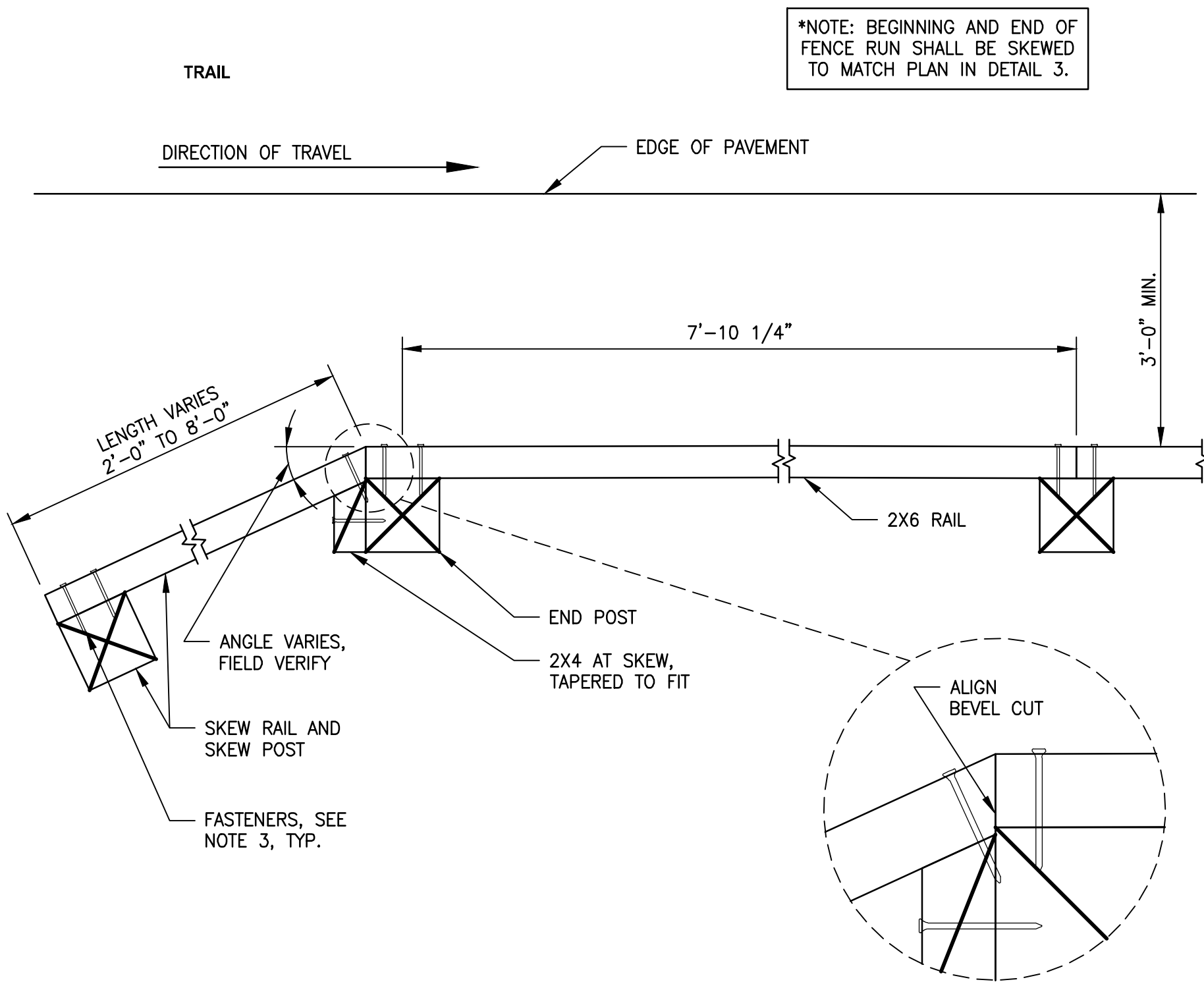
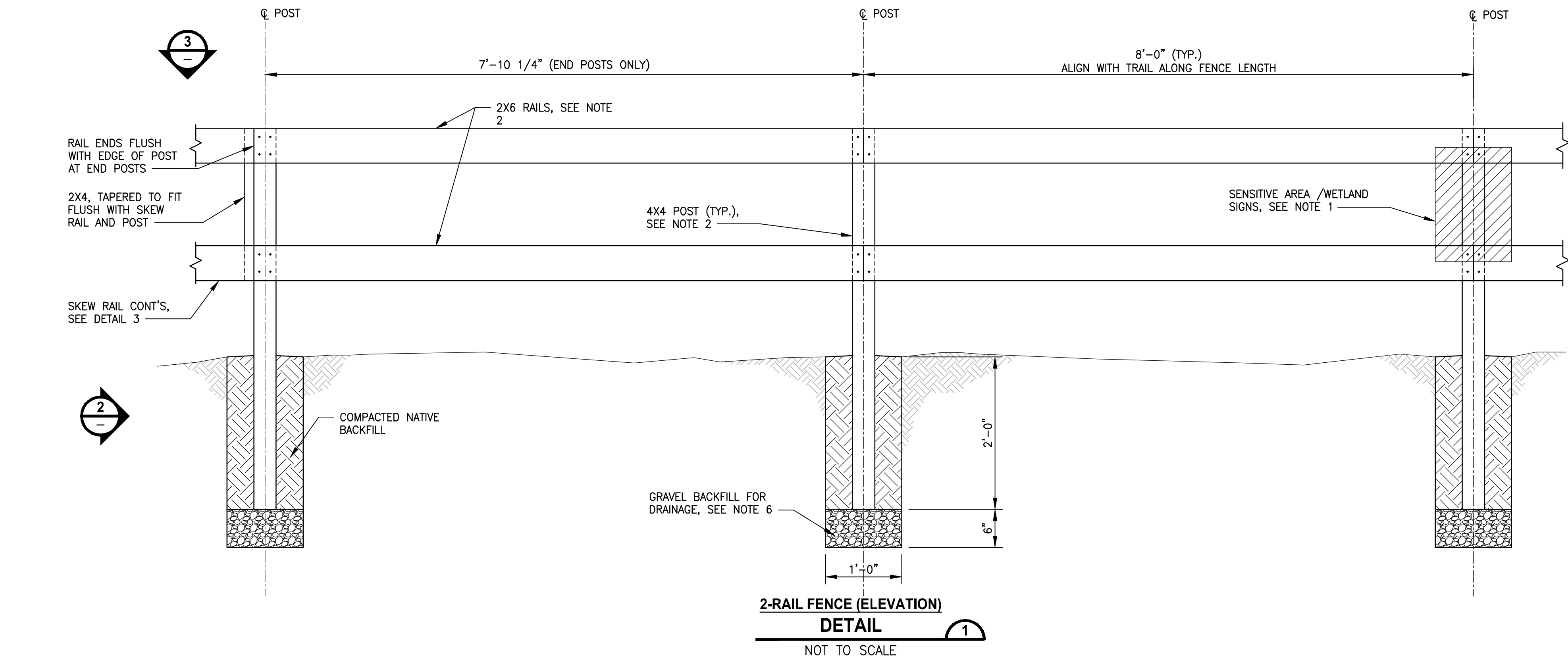
MISCELLANEOUS DETAILS

SHEET NO.  
136 OF 190

MD2



PATH: U:\PSO\Projects\Clients\1521-075-ELST\98Sves\CADD\Phase 19\T03 Civil\Wdg-Phase1\ PLOTTED BY: purgbut DATE: Friday, November 13, 2020 9:56:44 AM LAYOUT: MD3



#### NOTES:

1. SENSITIVE AREA/WETLAND SIGNS SHALL BE MOUNTED ON SAWN LUMBER FENCE POST EVERY 100 FEET. MOUNT SIGN TO POST USING (2) 1/4" x 2" LONG GALVANIZED STEEL LAG SCREWS WITH GALVANIZED STEEL WASHERS. MINIMUM (2) SIGNS PER FENCE RUN.
2. ALL BOARDS AND POSTS SHALL BE UNTREATED CEDAR LUMBER.
3. ALL WOOD FASTENERS SHALL BE 3 1/2" LONG, #9 STAR DRIVE FLAT HEAD STAR DRIVE POLYMER COATED DECK SCREWS.
4. FENCE POST SHALL BE INSTALLED IN CONCRETE FOOTING (DETAIL 4). UNLESS OTHERWISE APPROVED BY THE KC PARKS ENGINEER.
5. FENCE INSTALLED ON OR ADJACENT TO A SLOPE SHALL UTILIZE 12" DIAM. CARDBOARD PIPE.
6. GRAVEL BACKFILL FOR DRAINAGE TO BE USED WHERE ALLOWABLE PER KC PARKS ENGINEERS DECISION. GRAVEL BACKFILL FOR DRAINS SHALL CONFORM TO WSDOT STANDARD SPEC 9-03.12(4).

CITY OF SAMMAMISH APPROVAL	
PLANNING DEPT. APPROVAL	CITY OF SAMMAMISH PUBLIC WORKS DEVELOPMENT REVIEW
BY: ABaty	These drawings have been reviewed for compliance with City of Sammamish Clearing and Grading and Stormwater requirements and also in accordance with the requirements as established in the Settlement Agreement between King County vs. City of Sammamish No. C17-0921 JCC and King County vs. City of Sammamish No. 17-2-28922-7 SEA and have been deemed ACCEPTABLE. The reviewer accepts no responsibility for any errors and/or omissions made by the preparer of these drawings.
DATE: 06/10/2021	10 June 2021

CONFORMED DRAWING



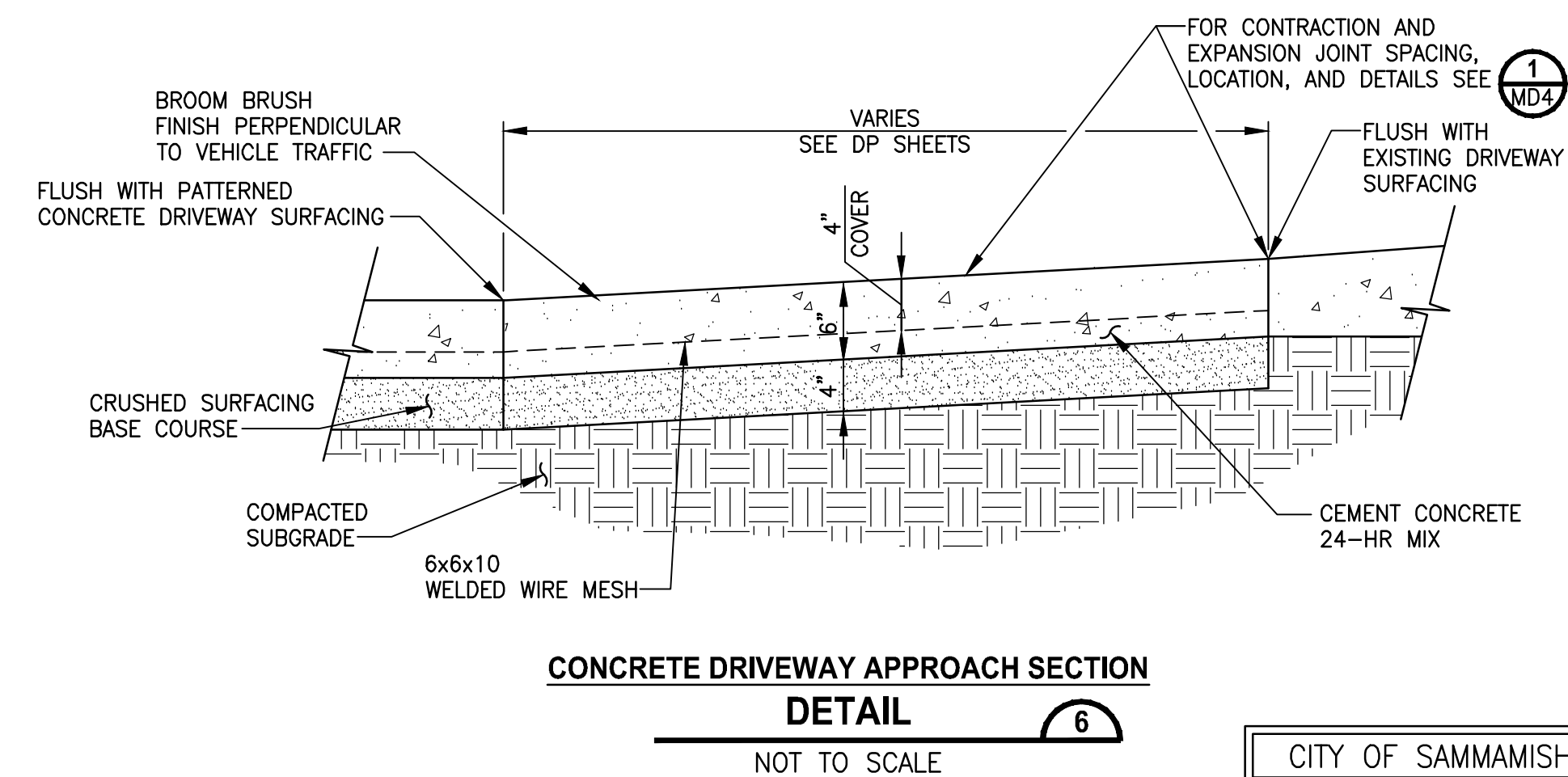
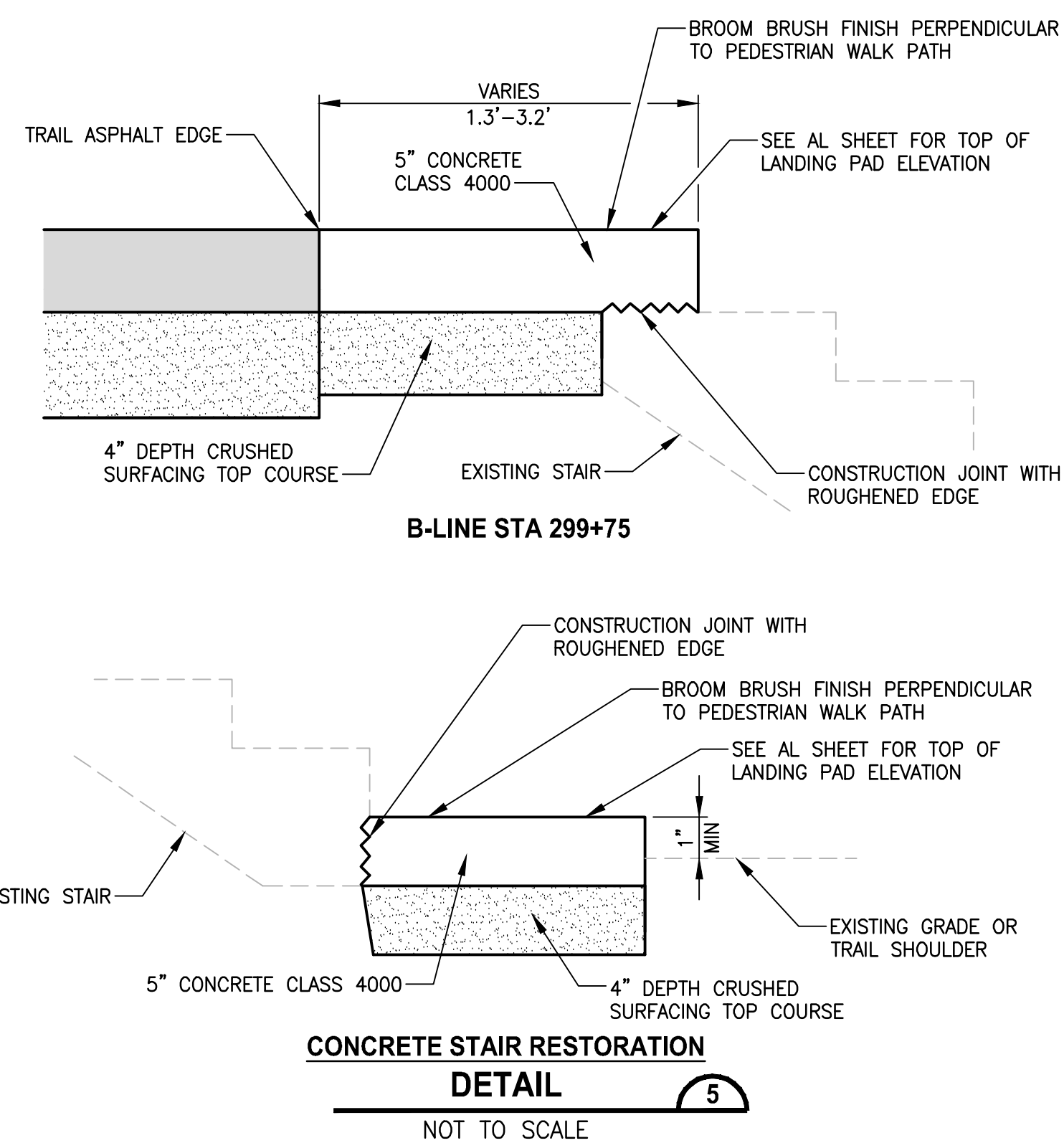
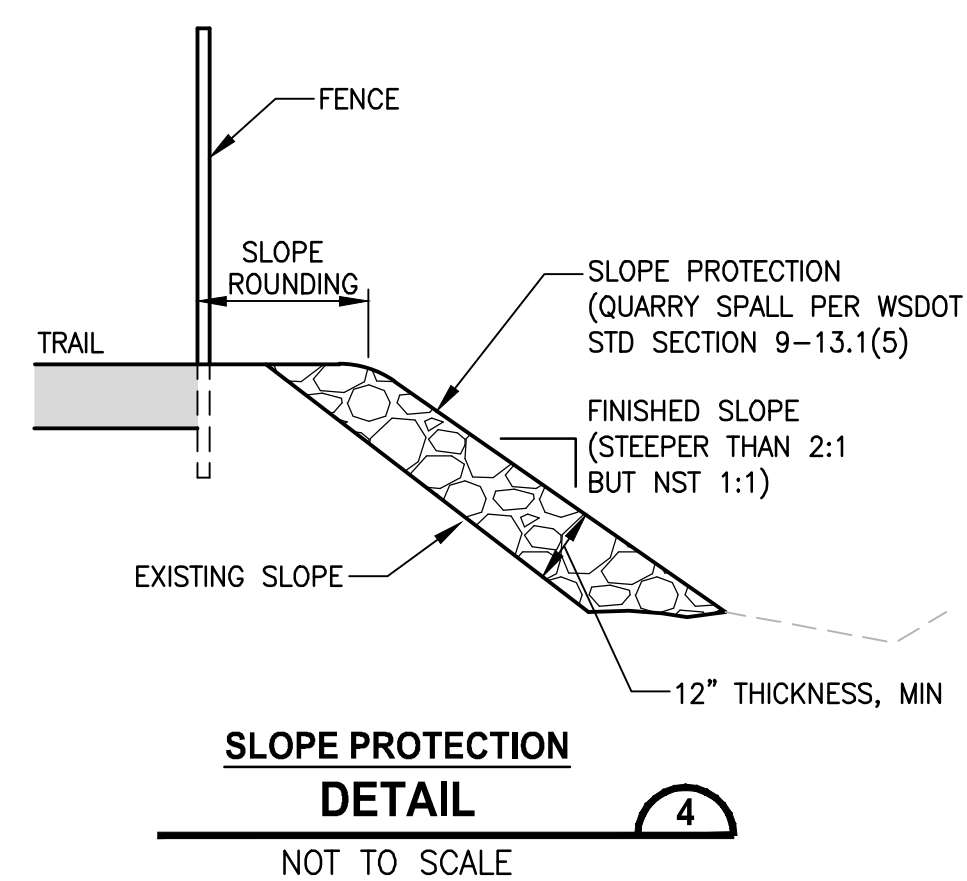
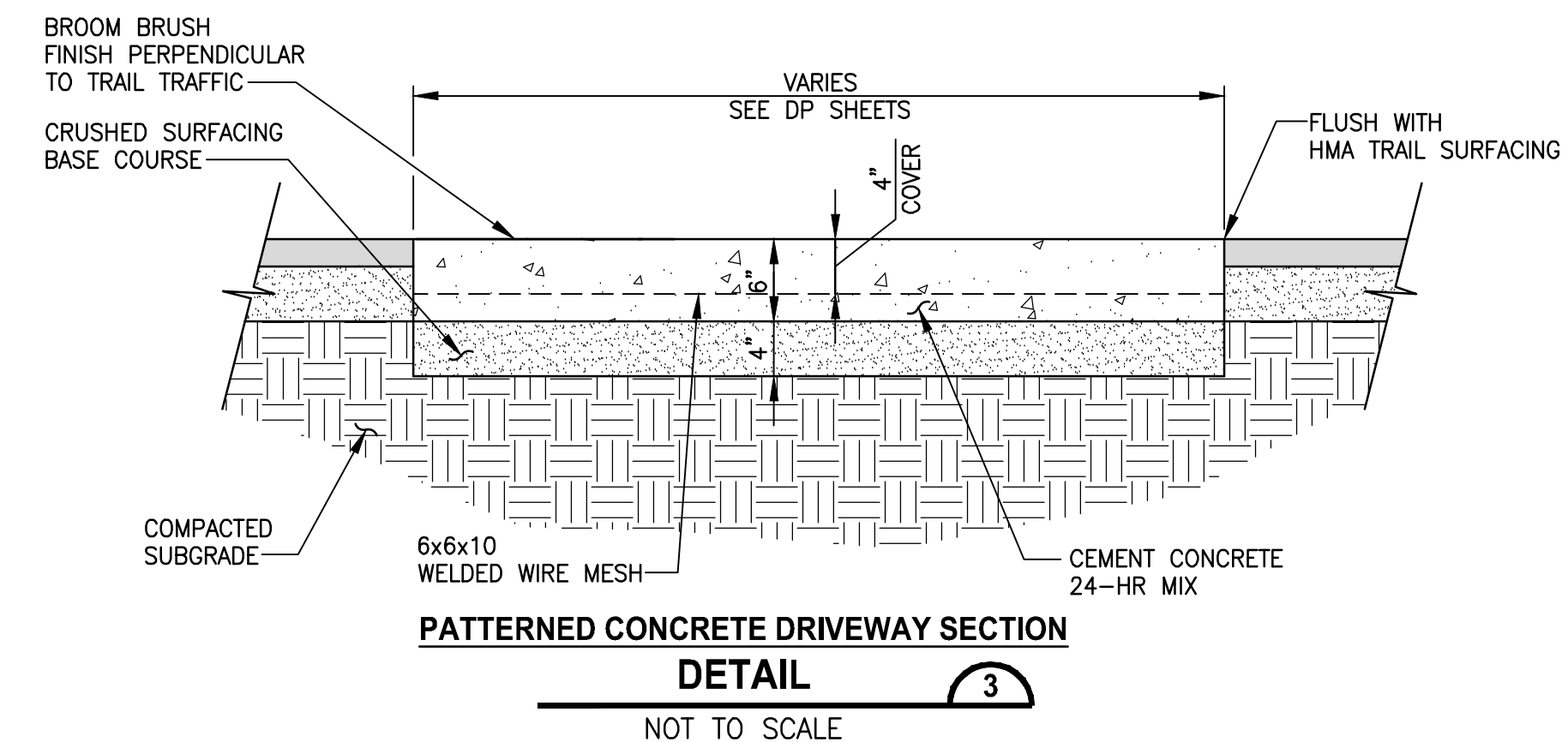
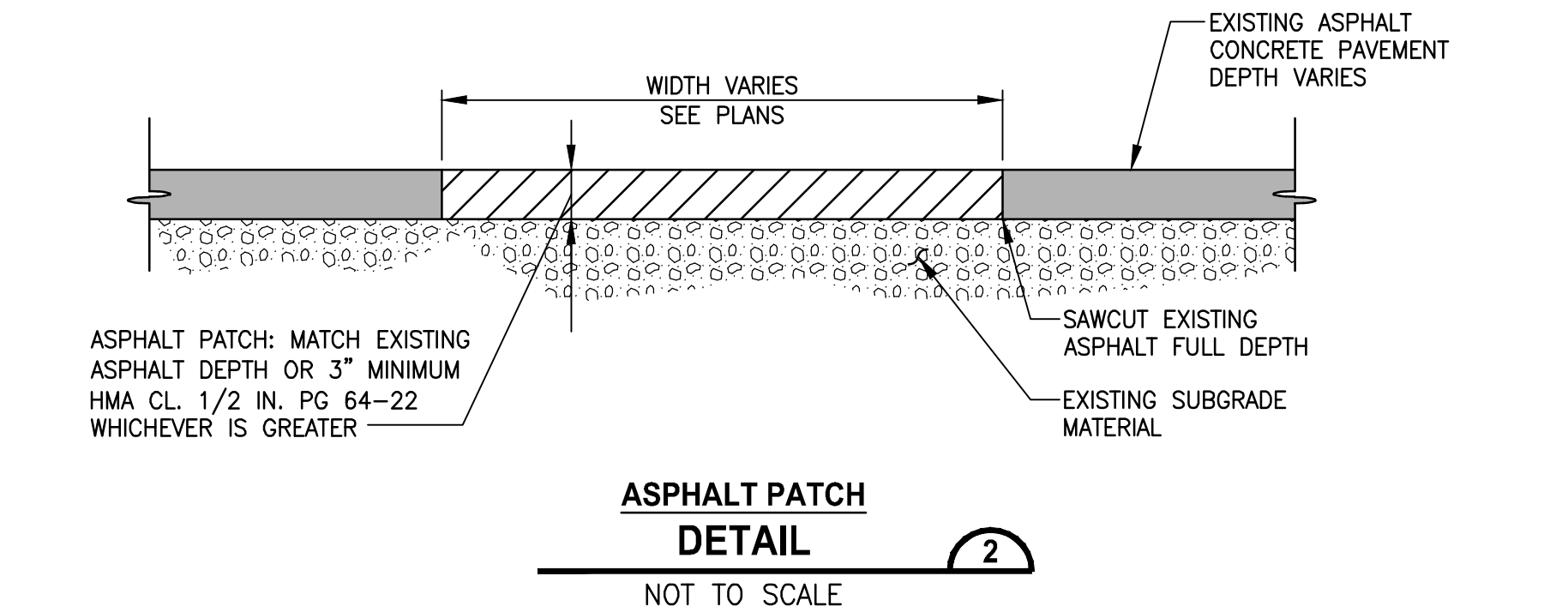
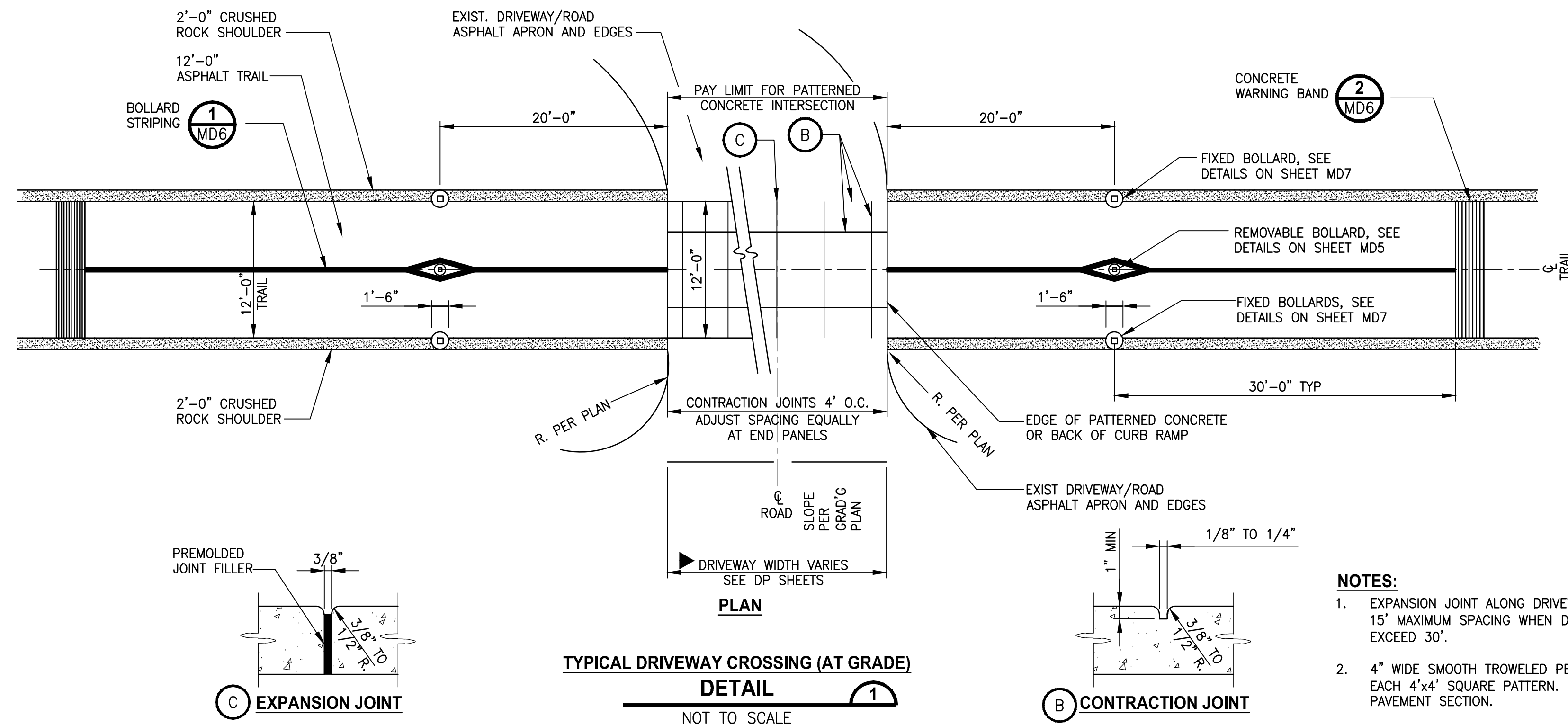
**Parametrix**  
ENGINEERING · PLANNING · ENVIRONMENTAL SCIENCES  
719 2ND AVENUE, SUITE 200 | SEATTLE, WA 98104  
P 206.394.3700  
WWW.PARAMETRIX.COM

PROJECT NAME  
**EAST LAKE SAMMAMISH  
MASTER PLAN TRAIL  
SOUTH SAMMAMISH SEGMENT B - PHASE 1**  
SAMMAMISH, WA

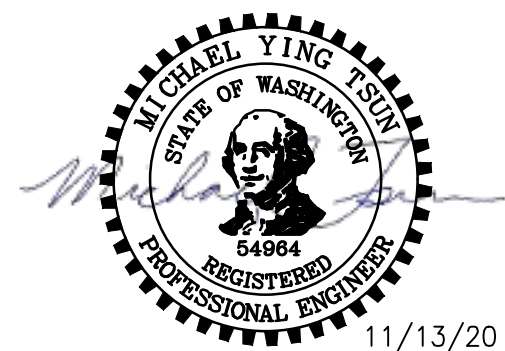
MISCELLANEOUS DETAILS

SHEET NO.  
137 OF 190

MD3



**CONFORMED DRAWING**



**Parametrix**  
ENGINEERING . PLANNING . ENVIRONMENTAL SCIENCES

719 2ND AVENUE, SUITE 200 | SEATTLE, WA 98104  
P 206.394.3700  
WWW.PARAMETRIX.COM

PROJECT NAME

**EAST LAKE SAMMAMISH  
MASTER PLAN TRAIL  
SOUTH SAMMAMISH SEGMENT B - PHASE 1**

SAMMAMISH, WA

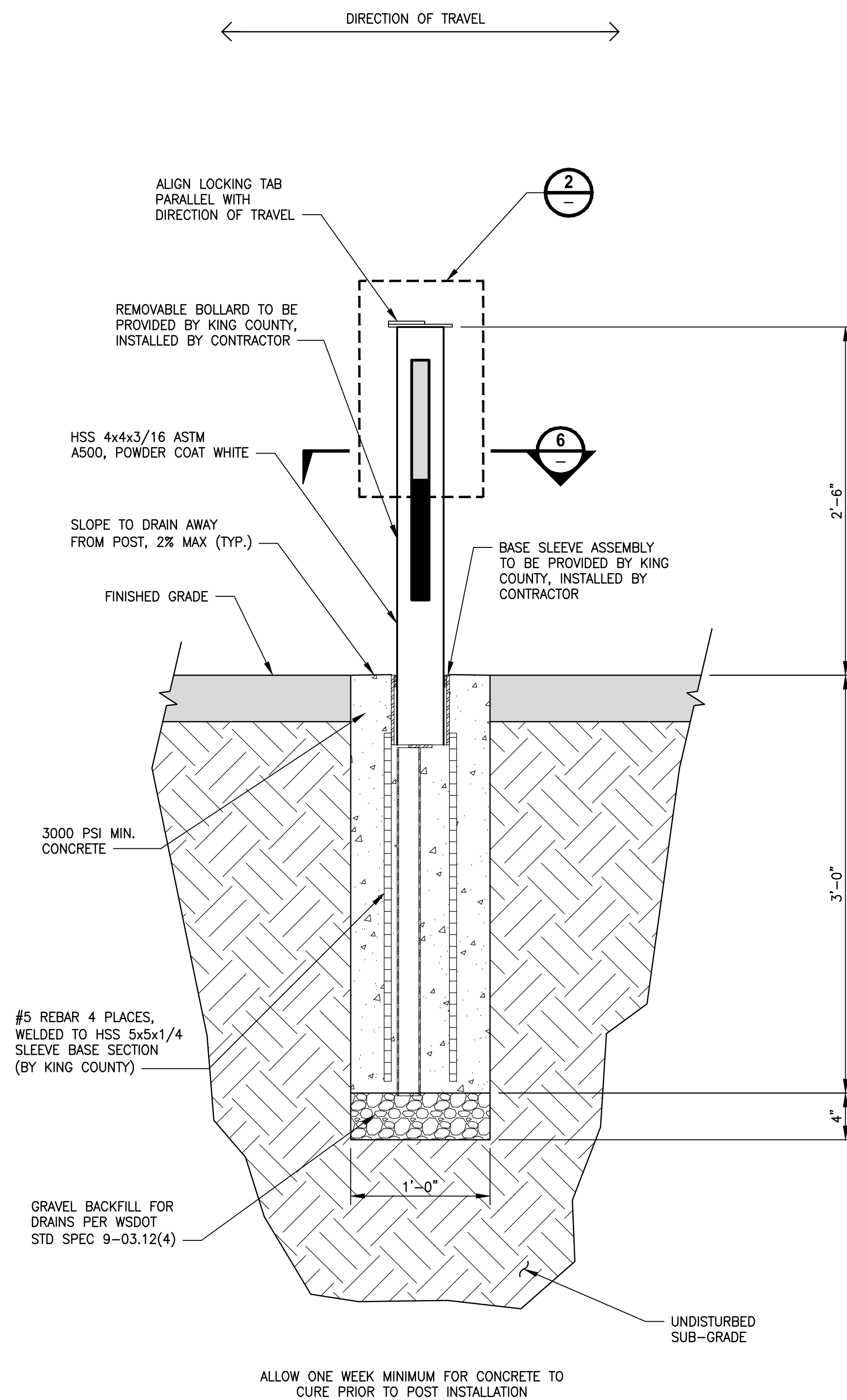
## MISCELLANEOUS DETAILS

SHEET NO.  
138 OF 190

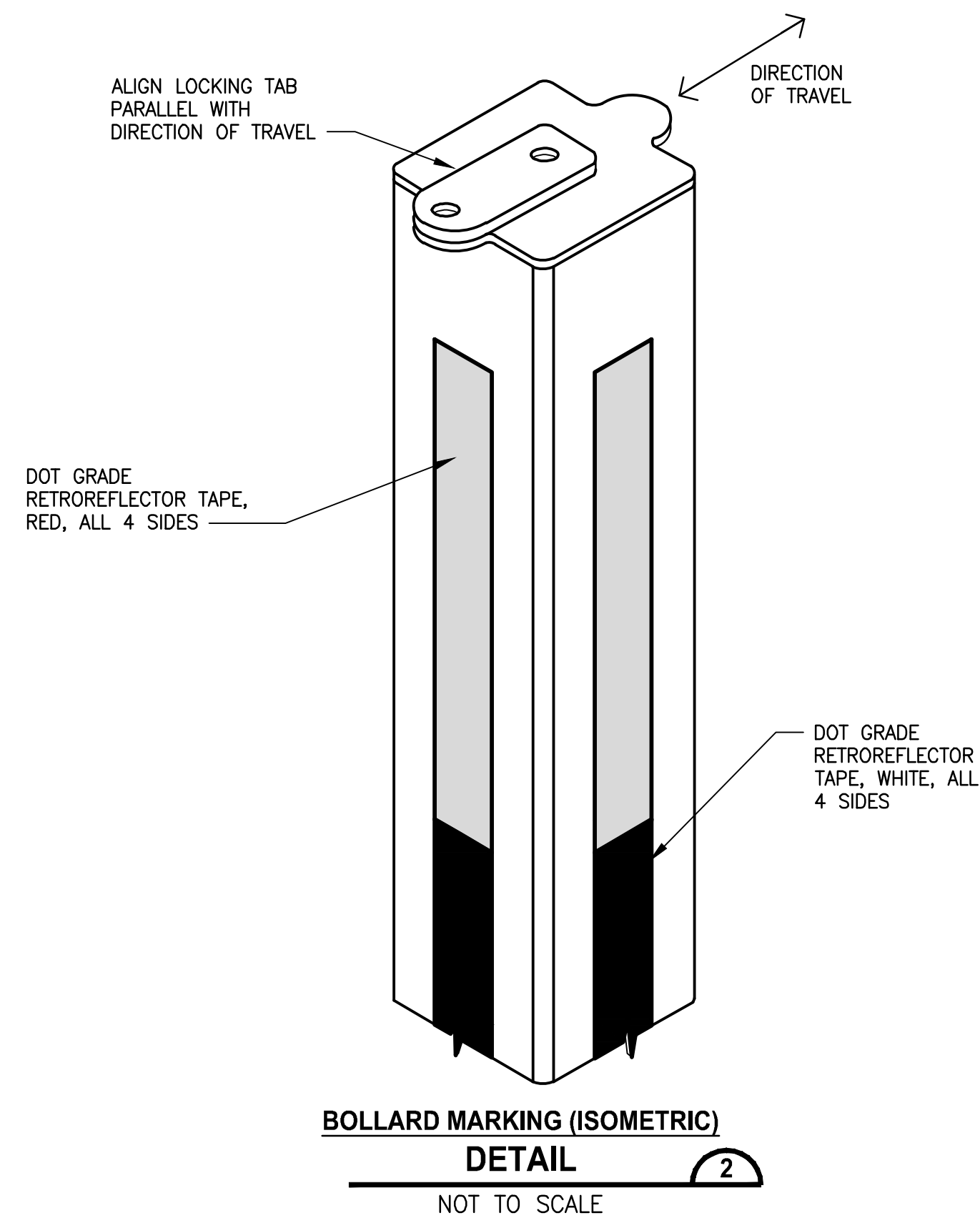
## MD4

CITY OF SAMMAMISH APPROVAL	
<b>PLANNING DEPT. APPROVAL</b>	<b>CITY OF SAMMAMISH PUBLIC WORKS DEPARTMENT REVIEW</b>
By: A-bay DATE: 06/10/2021	<p>These drawings have been reviewed for compliance with City of Sammamish Clearing and Grading and Stormwater requirements and also in accordance with the requirements as established in the Settlement Agreement between King County vs. City of Sammamish No. C17-0521, JCC and King County vs. City of Sammamish No. C17-0772-SEA and have been deemed ACCEPTABLE. The reviewer accepts no responsibility for any errors and/or omissions made by the preparer of these drawings.</p> <p><b>10 June 2021</b></p>
<b>Community Dev.</b>	

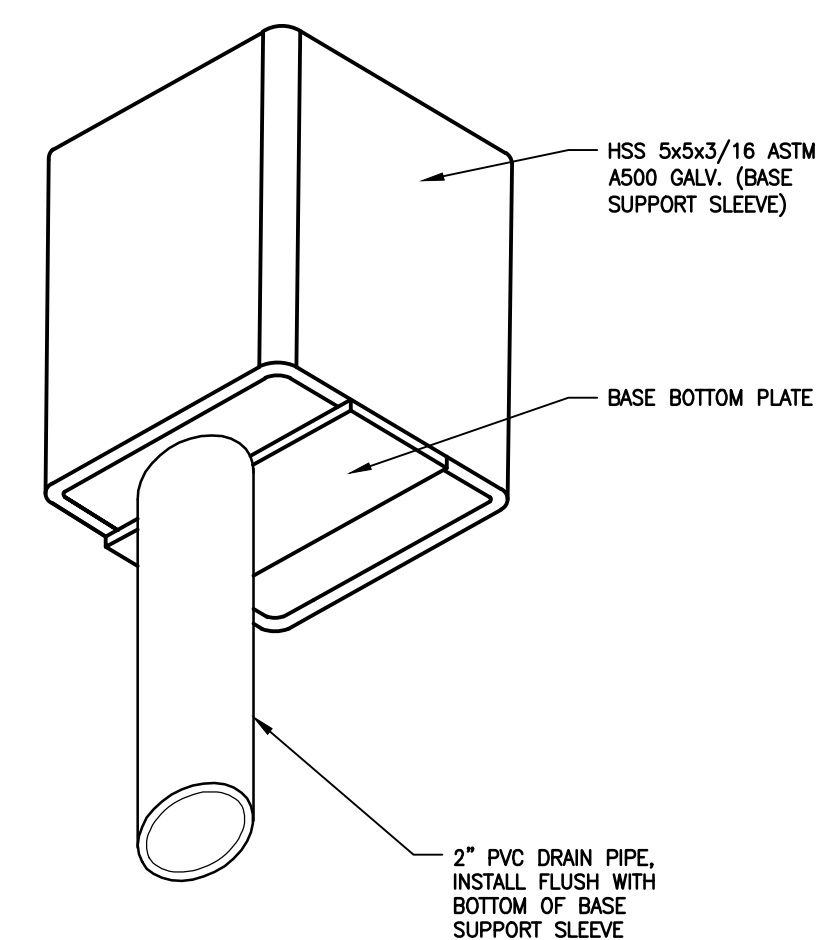




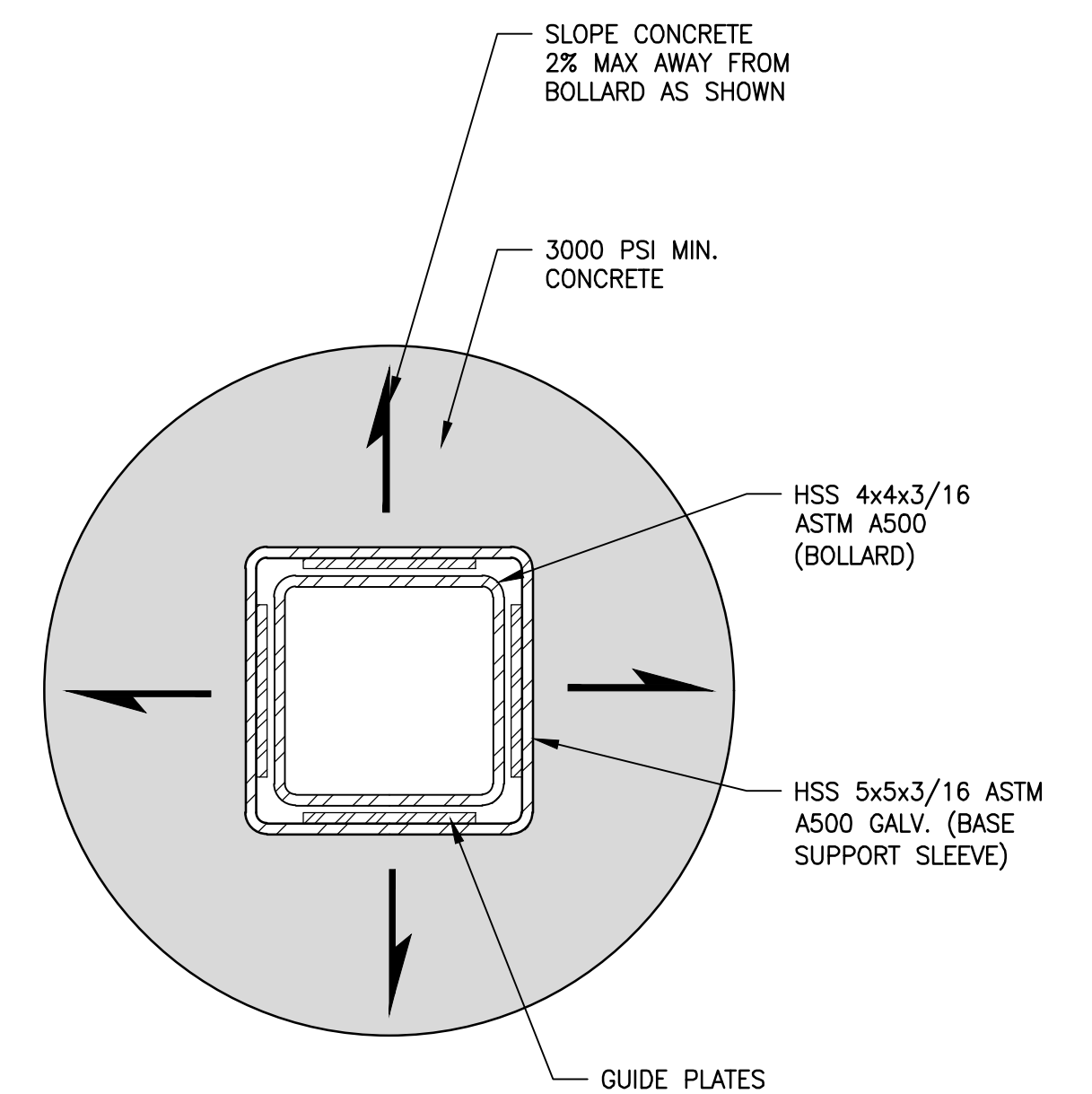
**REMOVABLE BOLLARD (ELEVATION)**  
**DETAIL**   
NOT TO SCALE



**REMOVABLE BOLLARD EMBEDMENT**  
**DETAIL**   
NOT TO SCALE



**BOLLARD BASE DRAINS (ISOMETRIC)**  
**DETAIL**  
NOT TO SCALE



**REMOVABLE BOLLARD (PLAN)**  
**DETAIL**

5

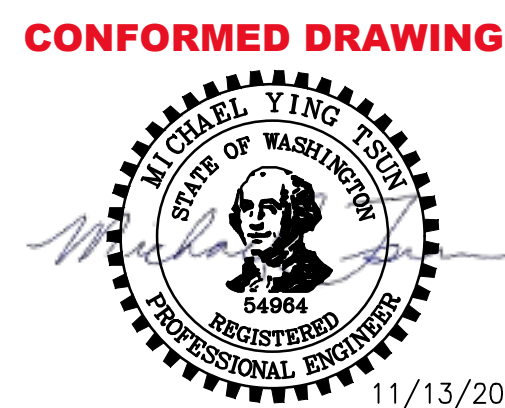
NOT TO SCALE

CITY OF SAMMAMISH APPROVAL	
<b>PLANNING DEPT. APPROVAL</b>  BY: A.Baty DATE: 06/10/2021	<b>CITY OF SAMMAMISH PUBLIC WORKS DEVELOPMENT REVIEW</b>  These drawings have been reviewed for compliance with City of Sammamish Clearing and Grading and Stormwater requirements and also in accordance with the requirements as established in the Settlement Agreement between King County vs. City of Sammamish No. 1:2-25927-2 SEA and have been deemed ACCEPTABLE. The reviewer accepts no responsibility for any errors and/or omissions made by the preparer of these drawings.  <b>10 June 2021</b>

▷	REVISIONS	DATE	BY	DESIGNED M. TSUN
				DRAWN B. PURGANAN
				CHECKED Y. HO
				APPROVED J. BAILEY

ONE INCH AT FULL SCALE.  
IF NOT, SCALE ACCORDINGLY

FILE NAME
BL1521075P19T03MD-01
JOB No.
554-1521-075 P19 T03
DATE
NOVEMBER 2020



PROJECT NAME

**EAST LAKE SAMMAMISH  
MASTER PLAN TRAIL  
SOUTH SAMMAMISH SEGMENT B - PHASE 1**

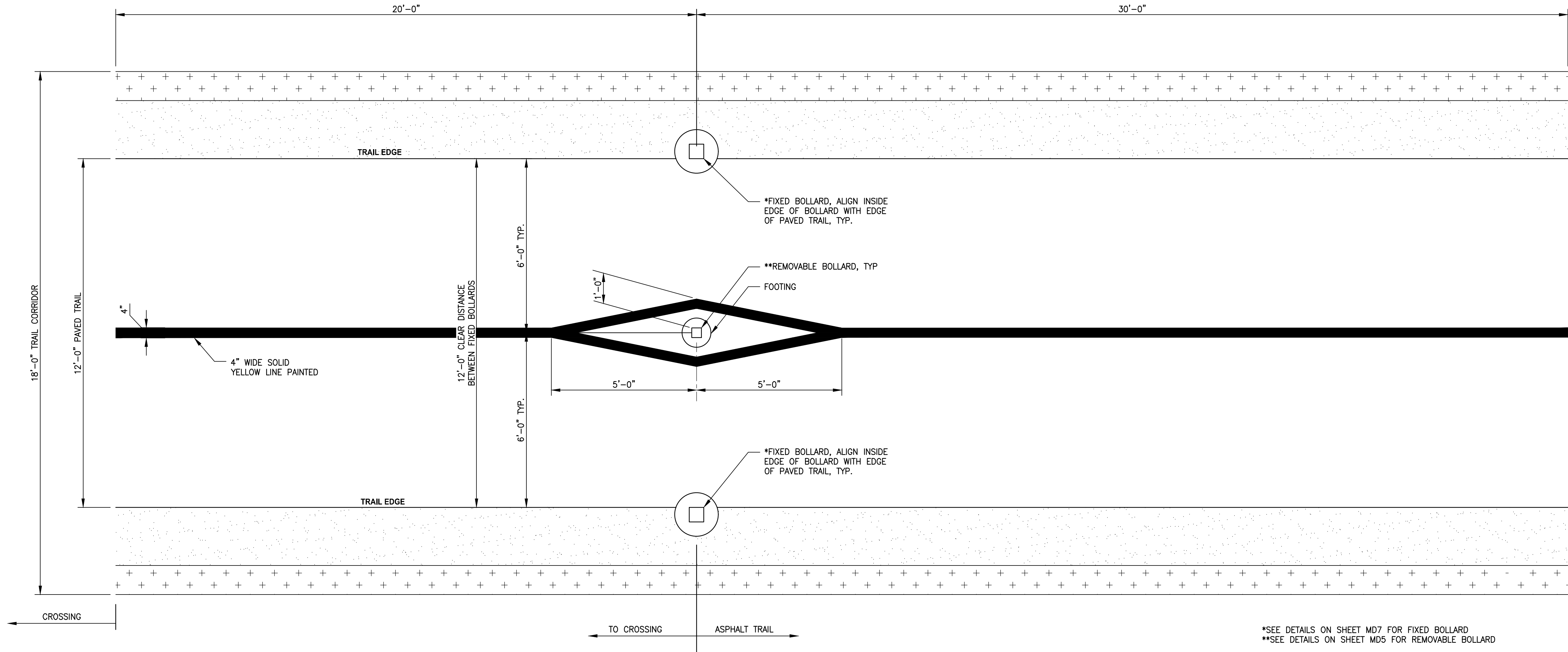
SAMMAMISH, WA

## MISCELLANEOUS DETAILS

SHEET NO.  
39 OF 190

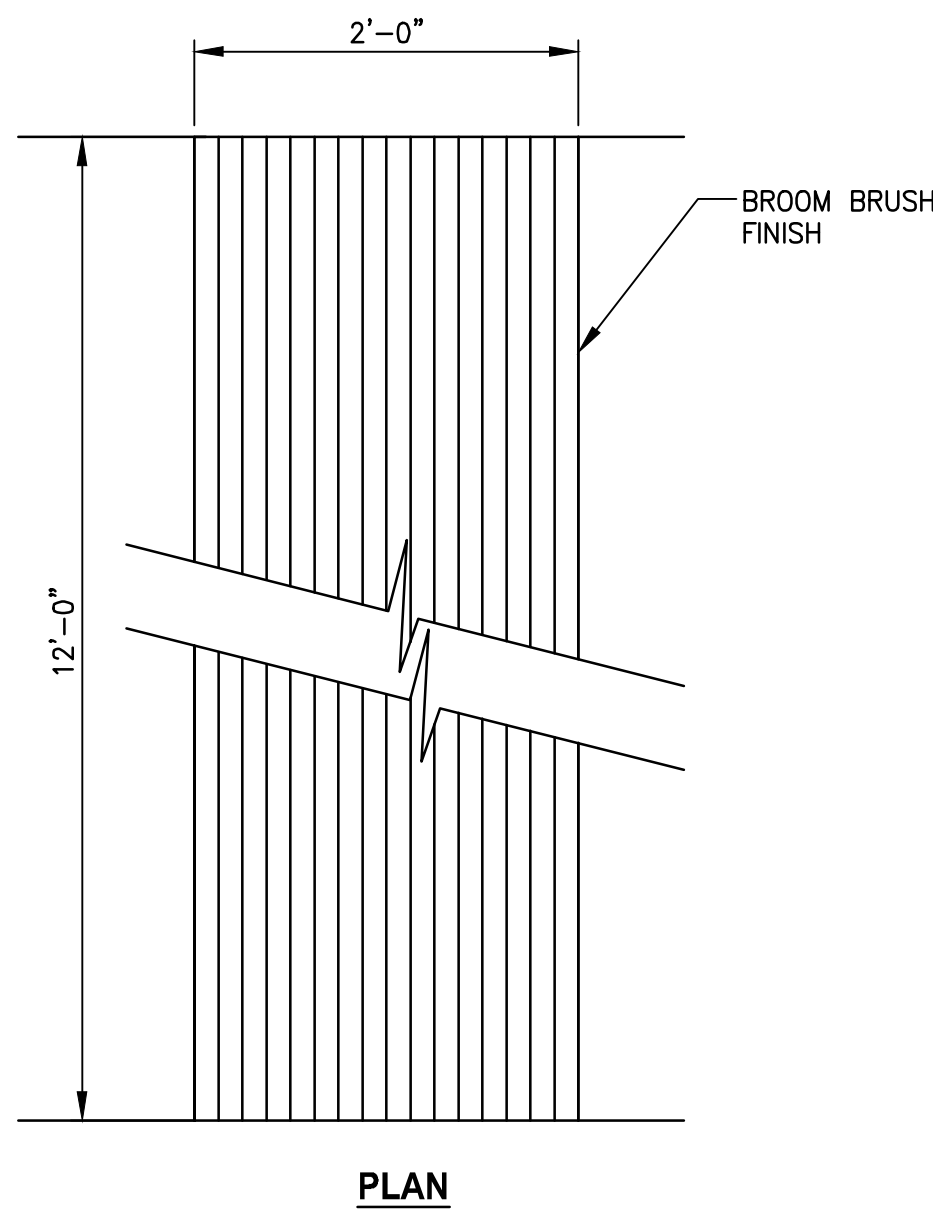
**MD5**

PATH: U:\PSD\Projects\Clients\1521-KingCo\564-1521-075-ELST\98Sves\CADD\Phase 19\T03 Civil\Draw-Phase1\ PLOTTED BY: purgaban DATE: Friday, November 13, 2020 9:56:59 AM LAYOUT: MD6

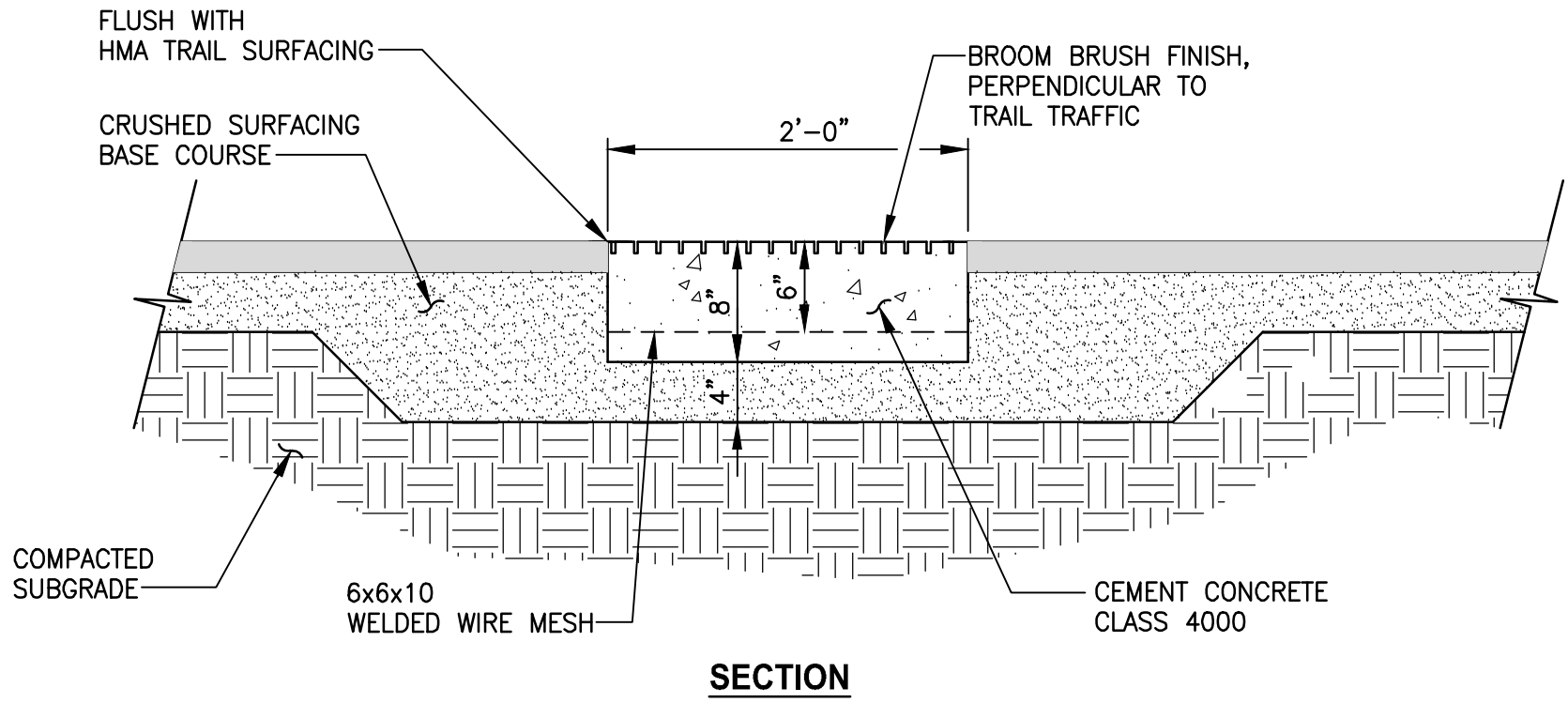


\*SEE DETAILS ON SHEET MD7 FOR FIXED BOLLARD  
\*\*SEE DETAILS ON SHEET MD5 FOR REMOVABLE BOLLARD

BOLLARD LAYOUT AND STRIPING (PLAN)  
DETAIL 1  
NOT TO SCALE



CONCRETE WARNING BAND  
DETAIL 2  
NOT TO SCALE



CONFORMED DRAWING



**Parametrix**  
ENGINEERING · PLANNING · ENVIRONMENTAL SCIENCES

719 2ND AVENUE, SUITE 200 | SEATTLE, WA 98104  
P 206.394.3700  
WWW.PARAMETRIX.COM

PROJECT NAME

**EAST LAKE SAMMAMISH  
MASTER PLAN TRAIL  
SOUTH SAMMAMISH SEGMENT B - PHASE 1**

SAMMAMISH, WA

**MISCELLANEOUS DETAILS**

SHEET NO.  
140 OF 190

**MD6**

**CITY OF SAMMAMISH APPROVAL**

**PLANNING DEPT. APPROVAL**  
BY: ABaty  
DATE: 06/10/2021

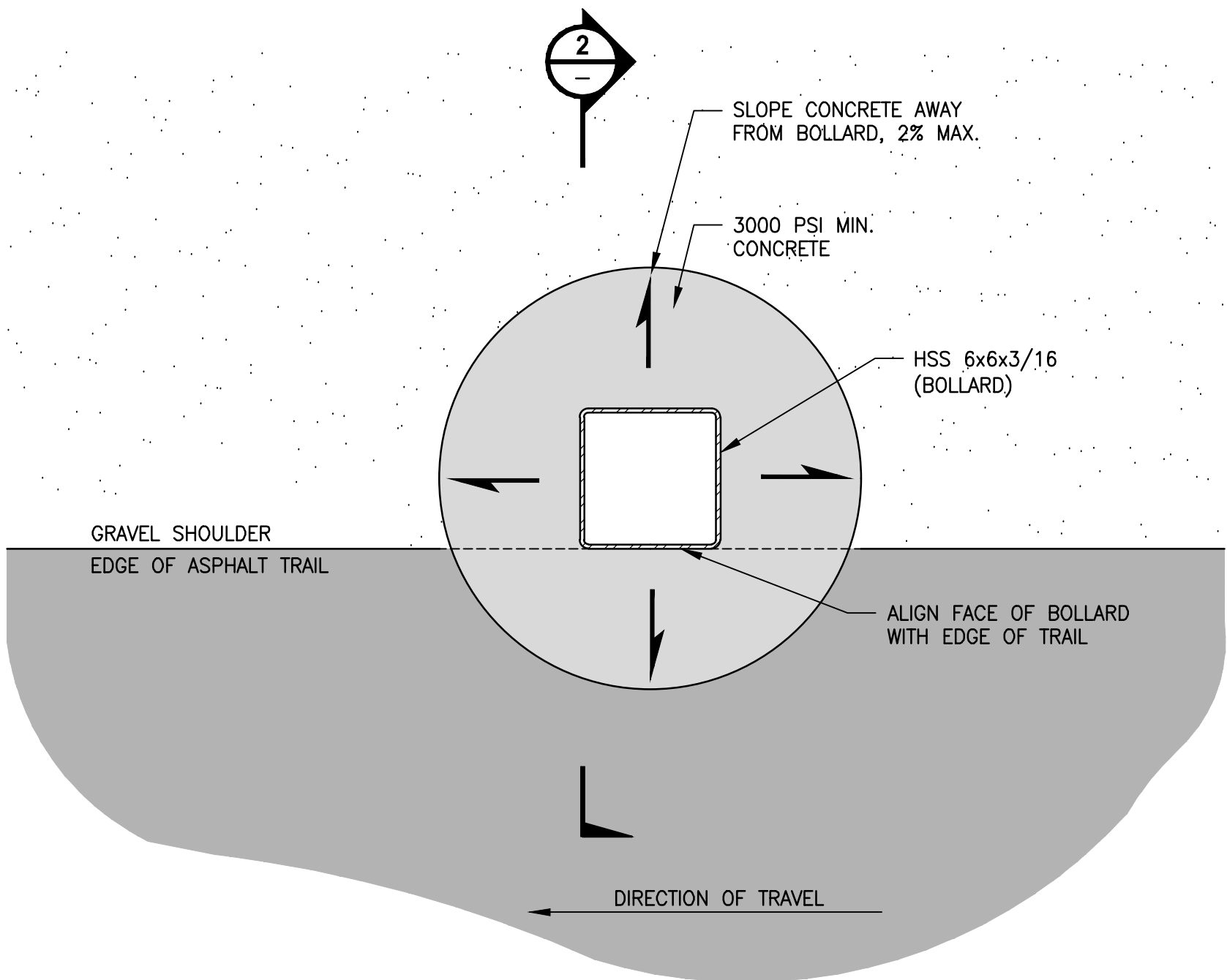
**CITY OF SAMMAMISH PUBLIC WORKS DEVELOPMENT REVIEW**  
These drawings have been reviewed for compliance with City of Sammamish Clearing and Grading and Stormwater requirements and also in accordance with the requirements as established in the Settlement Agreement between King County vs. City of Sammamish No. C17-0921 JCC and King County vs. City of Sammamish No. 17-2-28922-7 SEA and have been deemed ACCEPTABLE. The reviewer accepts no responsibility for any errors and/or omissions made by the preparer of these drawings.  
10 June 2021



PATH: U:\PSO\Projects\Clients\1521-KingCo\564-1521-075-ELST\98Sves\CADD\Phase 19\T03 Civil\Wdg-Phase1\ PLOTTED BY: purgbut DATE: Friday, November 13, 2020 9:57:04 AM LAYOUT: MD7

NOTES:

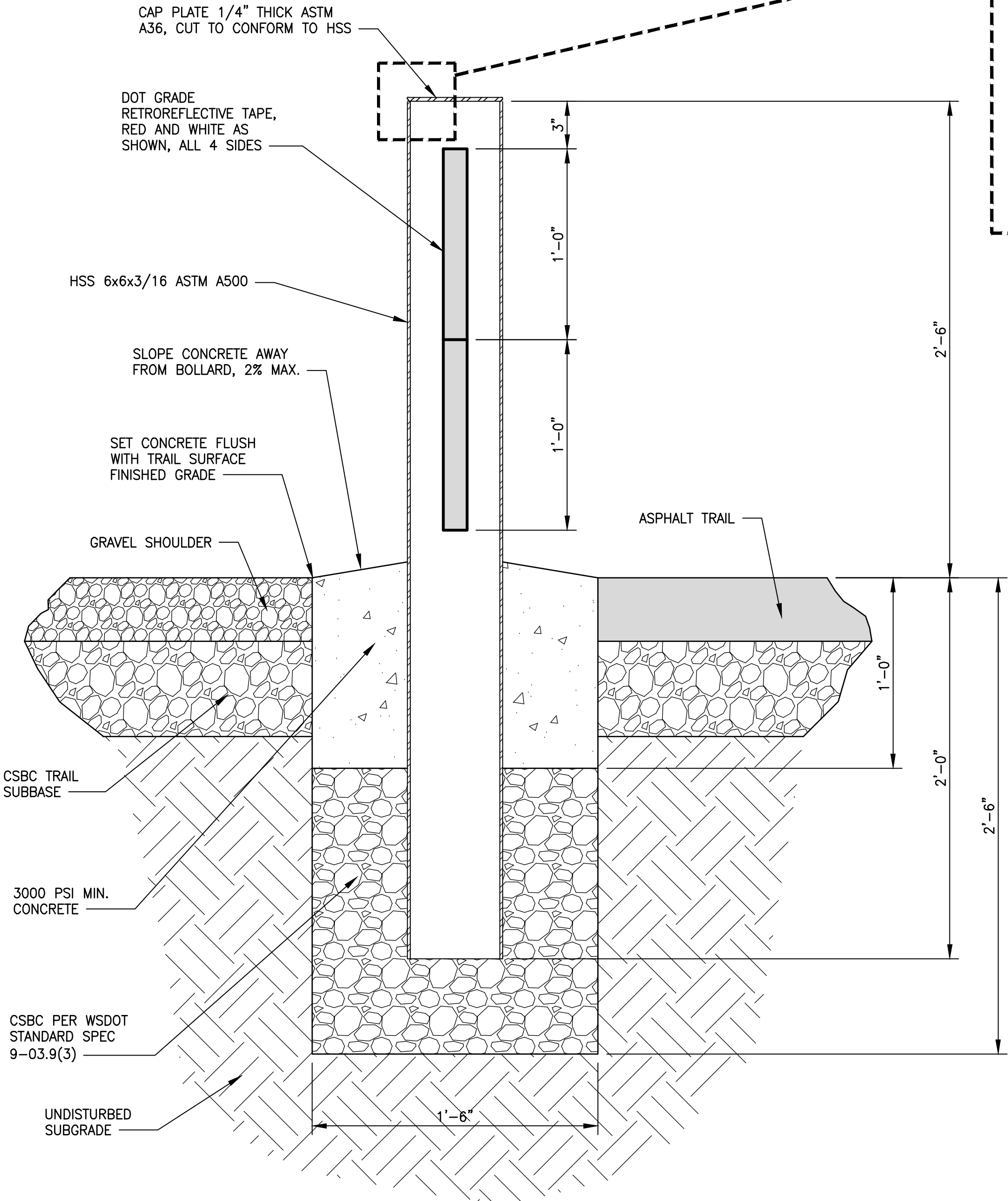
- BOLLARD ASSEMBLY SHALL BE POWDER COATED WHITE AFTER WELDING.
- APPLY RETROREFLECTIVE TAPE PER PLAN AFTER POWDER COATING.
- CONCRETE SHALL ACHIEVE A 28-DAY STRENGTH OF 3,000 PSI MINIMUM.
- ALL WELDS SHALL CONFORM TO THE REQUIREMENTS OF AWS DL4. WLDING SHALL BE PERFORMED BY AWS/WABO CERTIFIED WELDERS QUALIFIED FOR WELDS USING THE APPROVED ELECTRODES.



FIXED STEEL BOLLARD (PLAN VIEW)  
DETAIL

NOT TO SCALE

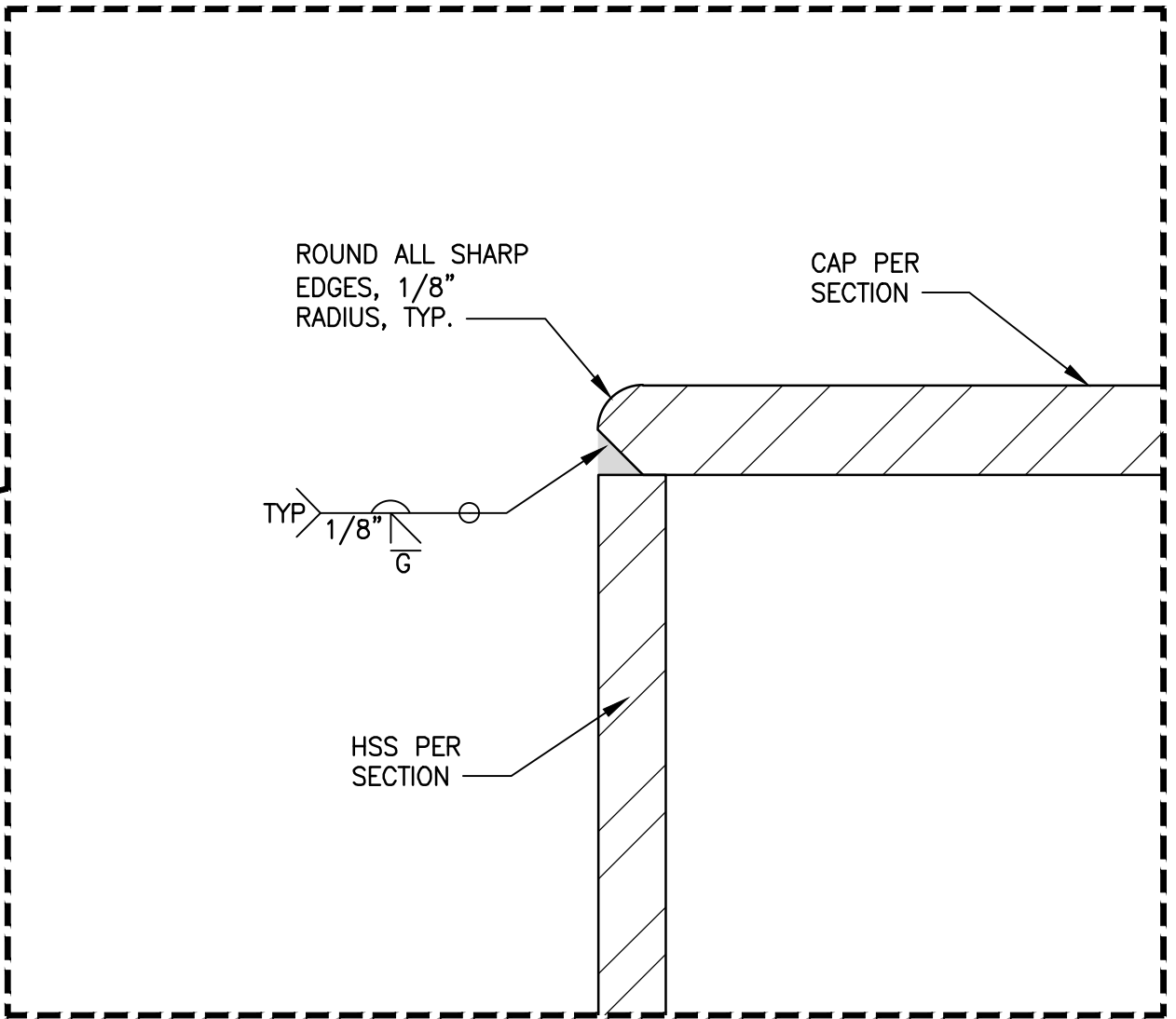
1



FIXED STEEL BOLLARD (ELEVATION)  
DETAIL

NOT TO SCALE

2



CONFORMED DRAWING



**Parametrix**  
ENGINEERING · PLANNING · ENVIRONMENTAL SCIENCES  
719 2ND AVENUE, SUITE 200 | SEATTLE, WA 98104  
P 206.394.3700  
WWW.PARAMETRIX.COM

PROJECT NAME  
**EAST LAKE SAMMAMISH  
MASTER PLAN TRAIL  
SOUTH SAMMAMISH SEGMENT B - PHASE 1**  
SAMMAMISH, WA

MISCELLANEOUS DETAILS

SHEET NO.  
141 OF 190

MD7

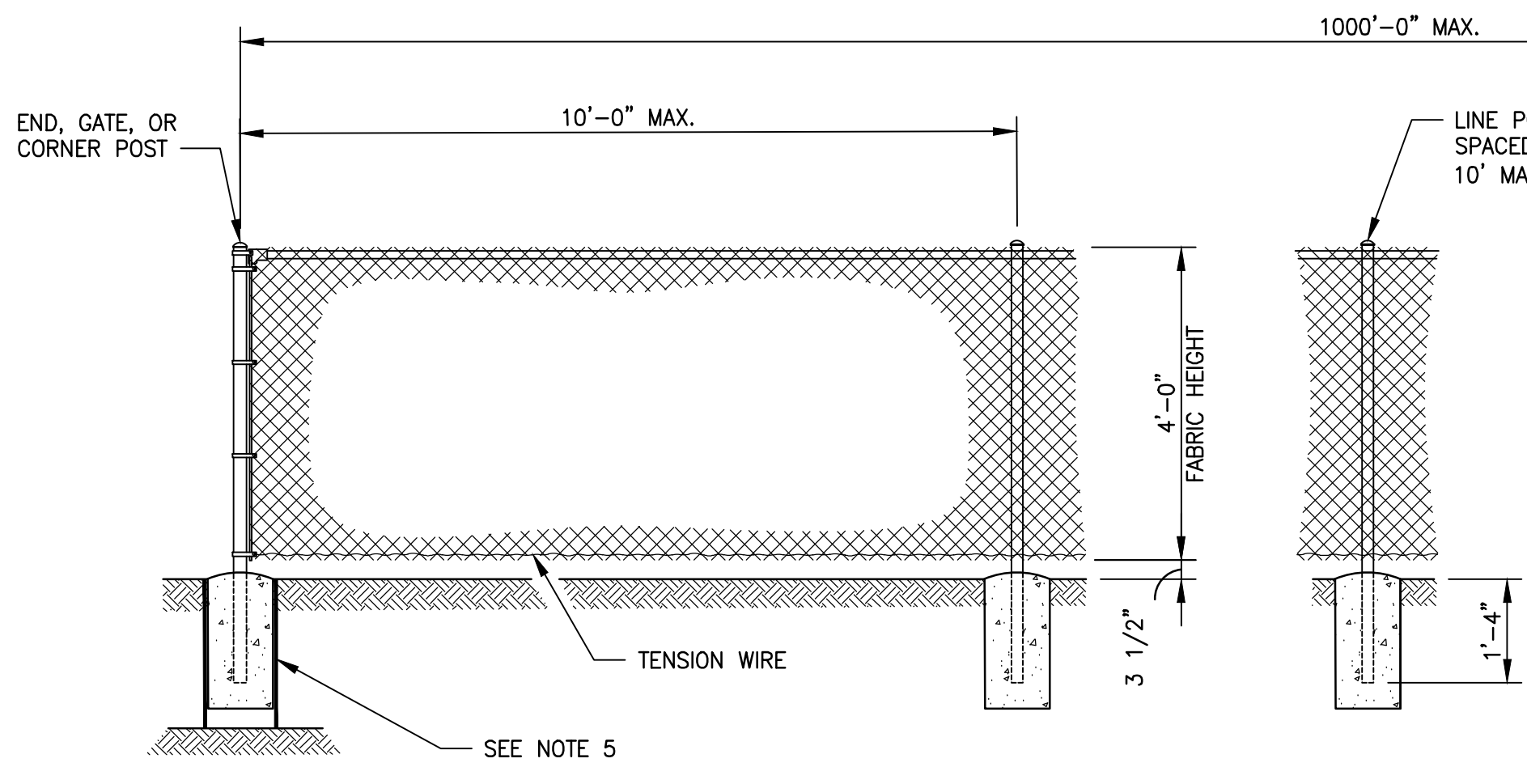
**CITY OF SAMMAMISH APPROVAL**

**PLANNING DEPT. APPROVAL**  
BY: ABaty  
DATE: 06/10/2021

**CITY OF SAMMAMISH PUBLIC WORKS  
DEVELOPMENT REVIEW**  
These drawings have been reviewed for compliance with City of Sammamish Clearing and Grading and Stormwater requirements and also in accordance with the requirements as established in the Settlement Agreement between King County vs. City of Sammamish No. C17-0921 JCC and King County vs. City of Sammamish No. 17-2-29922-7 SEA and have been deemed ACCEPTABLE. The reviewer accepts no responsibility for any errors and/or omissions made by the preparer of these drawings.  
10 June 2021



PATH: U:\PSO\Projects\Clients\1521-KingCo\564-1521-075-ELST\98Sves\CADD\Phase 19\T03 Civil\DWG-Phase1\ PLOTTED BY: purgbut DATE: Friday, November 13, 2020 9:57:10 AM LAYOUT: MD8



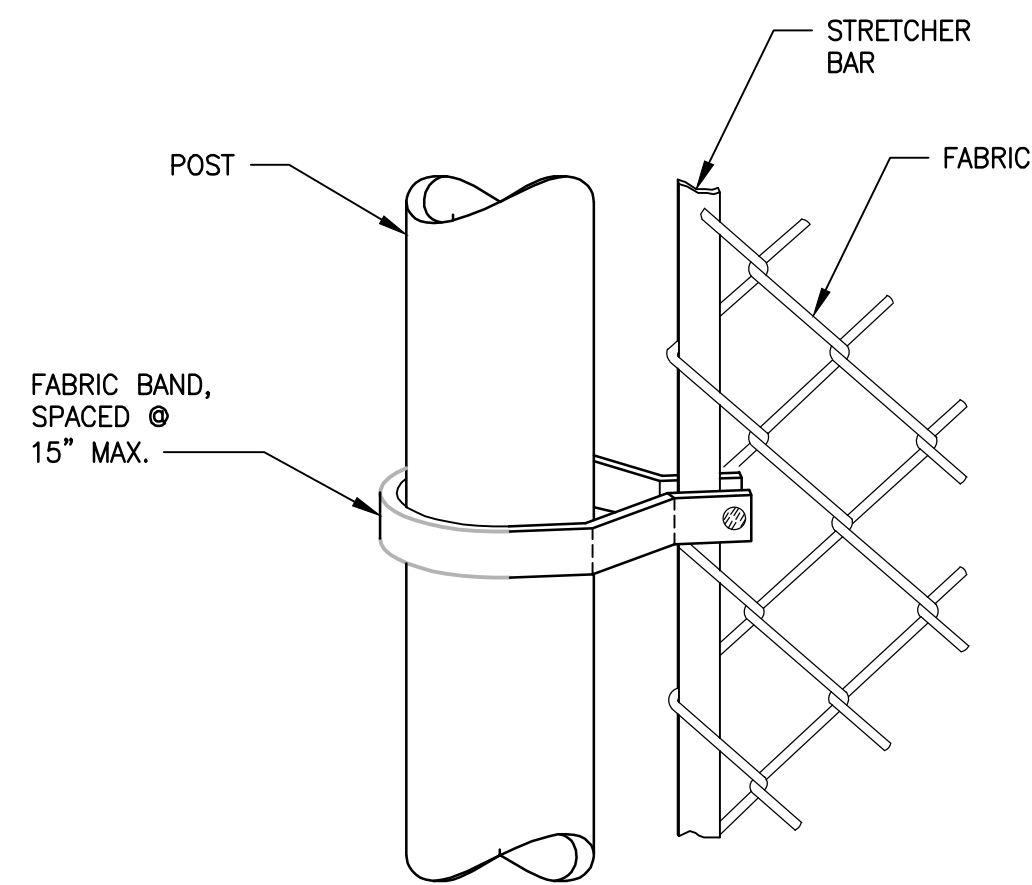
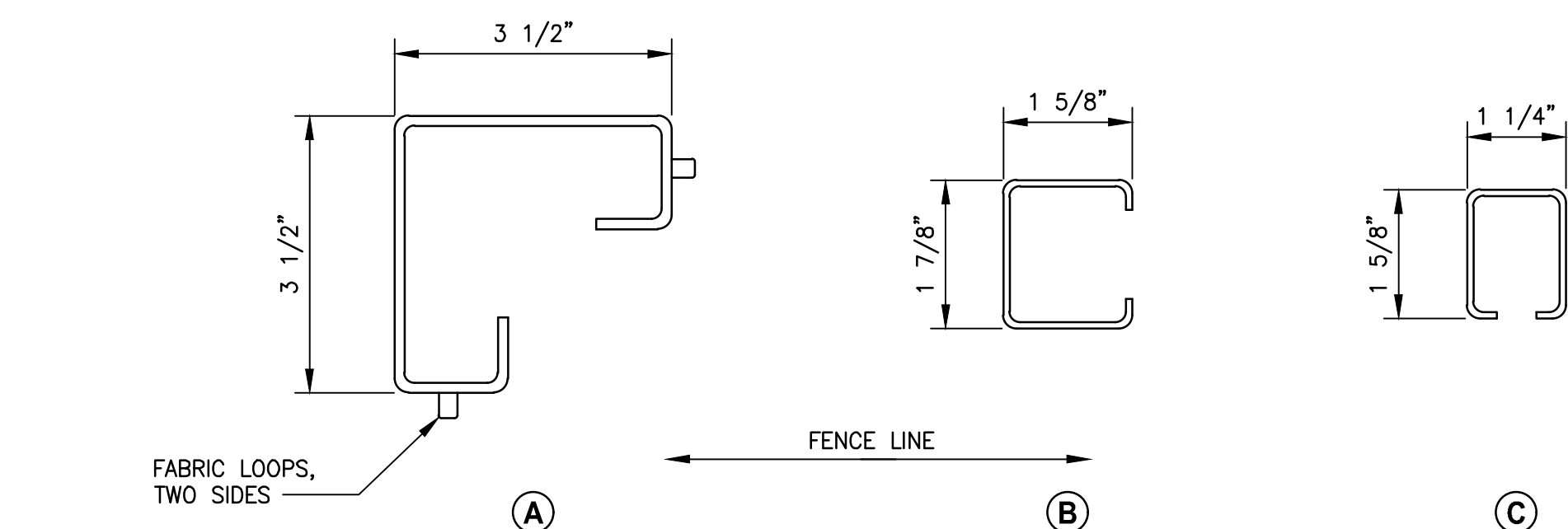
#### POST AND RAIL SPECIFICATIONS

MEMBER	PIPE	CONC.	
	NOM. SIZE (SCH 40)	SECTION	WEIGHT (LB/FT)
END, CORNER, OR PULL POST	2 1/2" DIAM.	(A)	5.10
LINE OR BRACE POST	2" DIAM.	(B)	2.40
BRACE OR TOP RAIL	1 1/4" DIAM.	(C)	1.35
GATE POST	3 1/2" DIAM.		

#### 4 FOOT COATED CHAIN LINK FENCE (ELEVATION)

##### DETAIL 1

NOT TO SCALE



#### STRETCHER BAR DETAIL 2

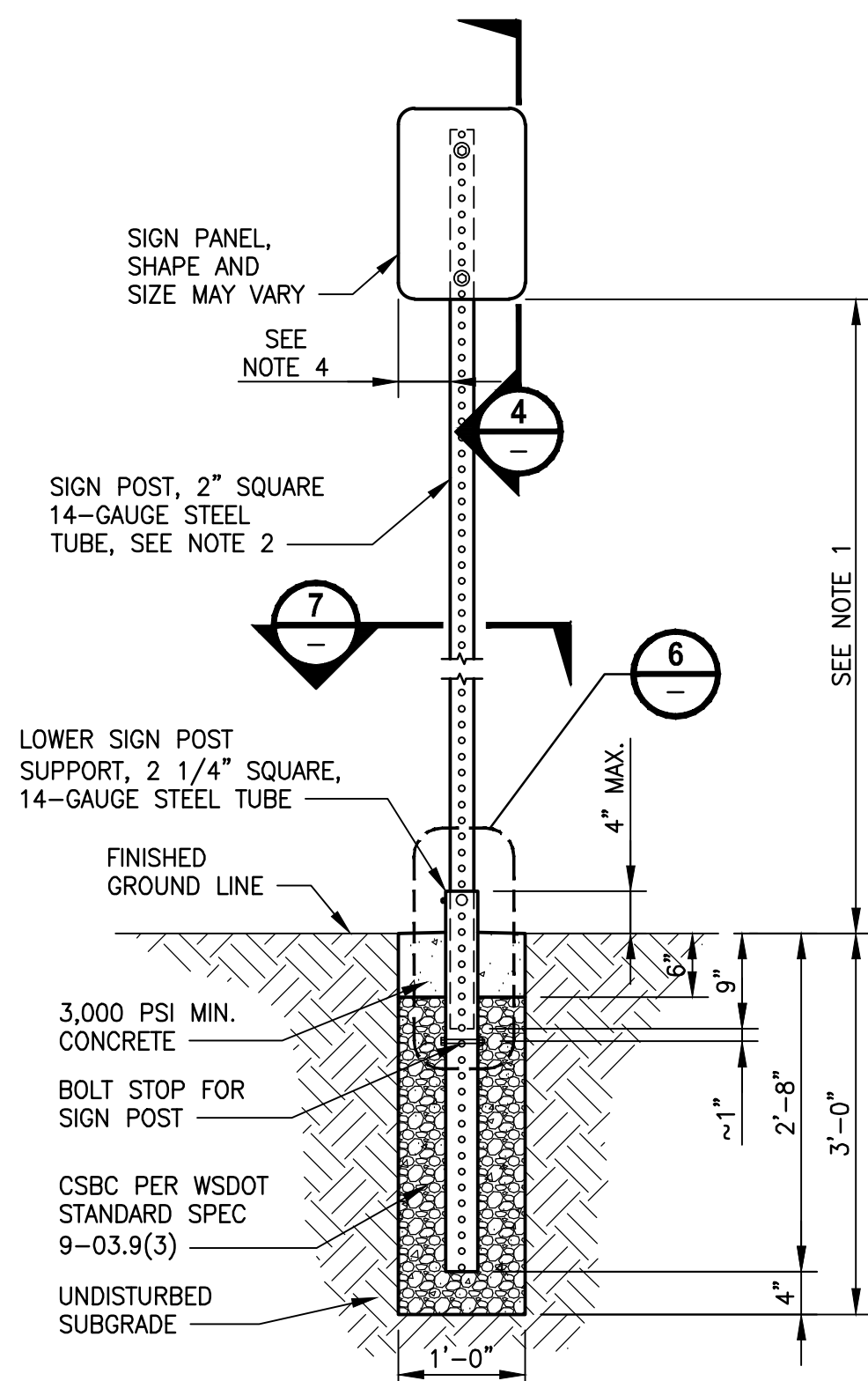
NOT TO SCALE

#### NOTES:

- CHAIN LINK FENCE FABRIC SHALL BE HOT-DIP GALVANIZED WITH A MINIMUM OF 0.8 OUNCE PER SQUARE FOOT OF SURFACE AREA.
- FENCING MATERIAL SHALL BE COATED WITH AN ULTRAVIOLET-SENSITIVE PLASTIC OR OTHER INERT MATERIAL AT LEAST 2 MILS IN THICKNESS. ANY PRETREATMENT OR COATING SHALL BE APPLIED IN ACCORDANCE WITH THE MANUFACTURER'S WRITTEN INSTRUCTIONS. THE COLOR SHALL MATCH FEDERAL STANDARD NUMBER \*\*\* 595 B 27038 BLACK \*\*\*, OR BE AS APPROVED BY THE ENGINEER.
- TENSION WIRE SHALL BE PLACED WITHIN THE LIMITS OF THE FIRST FULL FABRIC WEAVE.
- DETAILS ARE ILLUSTRATIVE AND SHALL NOT LIMIT HARDWARE DESIGN OR POST SELECTION OF ANY PARTICULAR FENCE TYPE, PER MANUFACTURER'S RECOMMENDATIONS.
- SONOTUBE OR EQUIVALENT SHALL ONLY BE USED IN SLOPE PROTECTION OR STEEPER SLOPED AREAS AS NOTED ON THE CS SHEETS. SONOTUBES SHALL BE INSTALLED AT EVERY OTHER POST LOCATION PER PLAN LENGTH SHOWN ON THE AL SHEETS.
- FOR POST CONNECTIONS AT THE SOLDIER PILE WALLS, SEE DETAIL 8 ON S9.

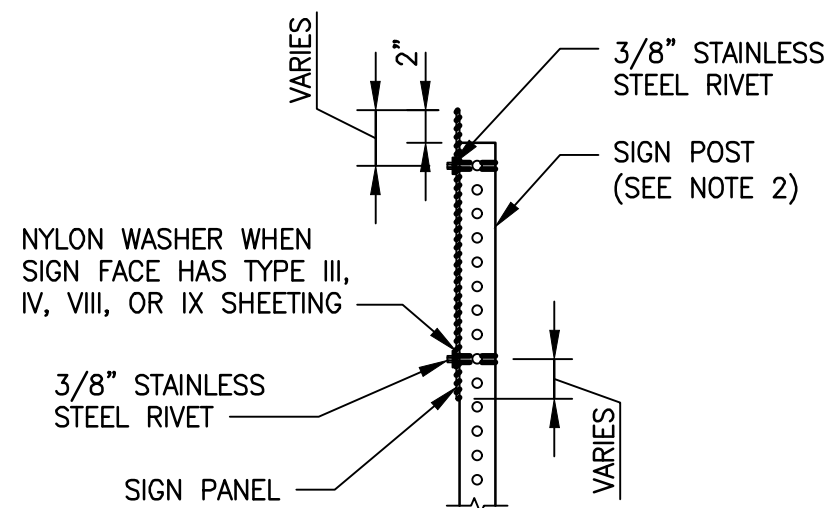
#### NOTES:

- USE 7 FOOT MIN. MOUNTING HEIGHT FOR TRAFFIC SIGNS. USE 5 FOOT MIN. MOUNTING HEIGHT FOR TRAIL SIGNS.
- PERFORATED SQUARE STEEL POST SHALL MEET REQUIREMENTS OF STANDARD SPECIFICATION 9-06.
- USE ONLY BASE CONNECTION HARDWARE THAT MEET THE REQUIREMENTS OF STANDARD SPECIFICATIONS 9-06 AND 9-28.
- USE OF CONCRETE FOOTING SIGN SUPPORT (DETAIL 1) UNLESS OTHERWISE APPROVED BY THE KC PARKS ENGINEERS.
- LATERAL CLEARANCE DISTANCES FOR TRAIL AND TRAFFIC SIGNS SHALL BE PER KC PARKS STANDARDS, MUTCD OR WSDOT REQUIREMENTS, LOCAL JURISDICTION, OR AS APPROVED BY THE ENGINEER.
- REFLECTOR ADDED TO SIGN POST PER KC PARKS ENGINEER'S DETERMINATION.
- DIMENSIONS FOR THE PARTS USED TO ASSEMBLE THE BASE CONNECTIONS ARE INTENTIONALLY NOT SHOWN. BASE CONNECTIONS ARE PATENTED, MANUFACTURED PRODUCTS THAT ARE IN COMPLIANCE WITH NCHRP 350 CRASH TEST CRITERIA. BASE CONNECTION DETAILS ARE SHOWN ONLY TO ILLUSTRATE ASSEMBLY OF PARTS.



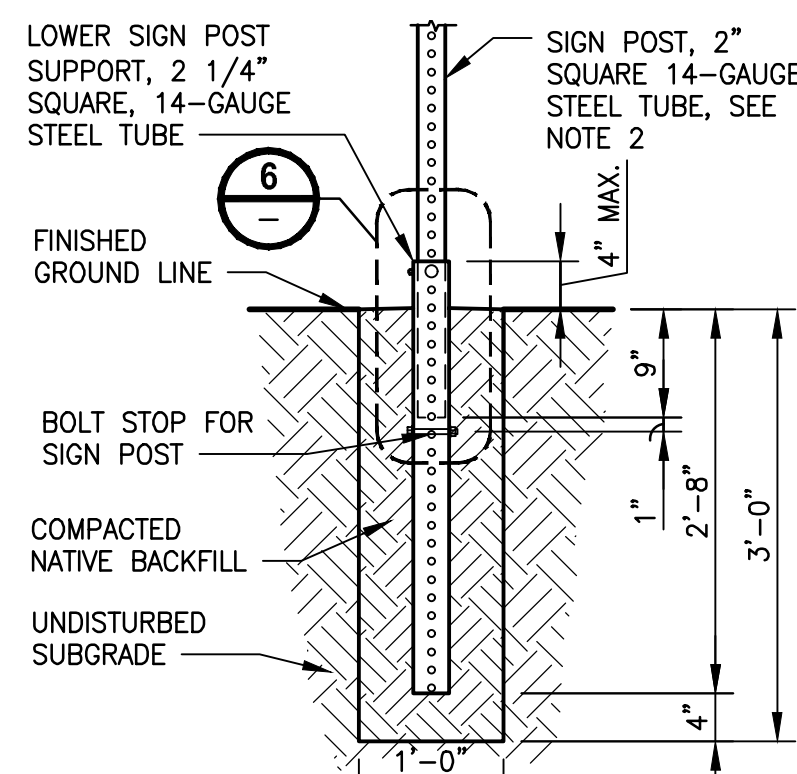
#### ELEVATION CONCRETE SIGN SUPPORT DETAIL 3

NOT TO SCALE



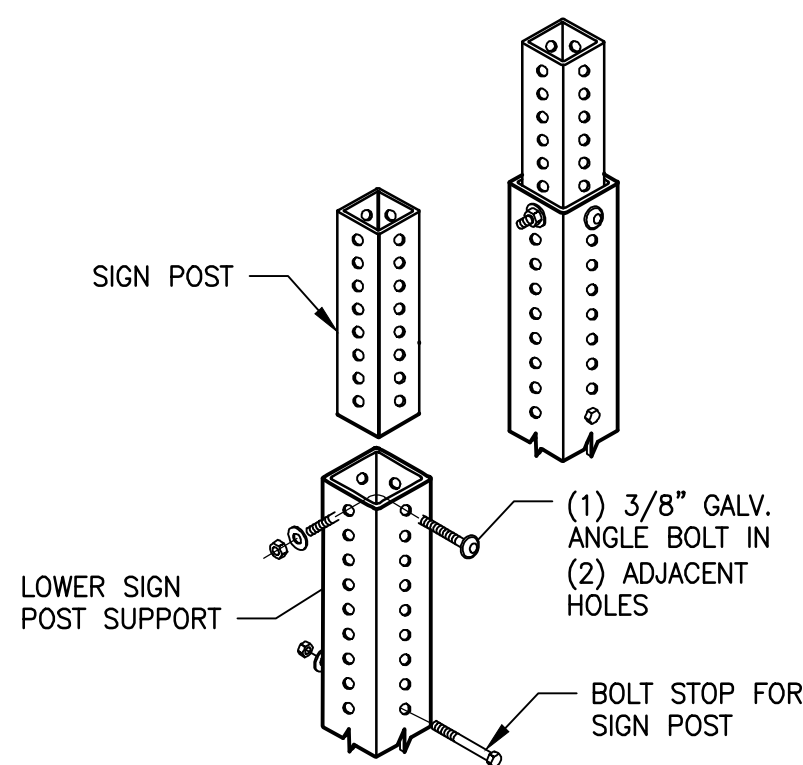
#### ELEVATION SIGN PANEL ATTACHMENT DETAIL 4

NOT TO SCALE



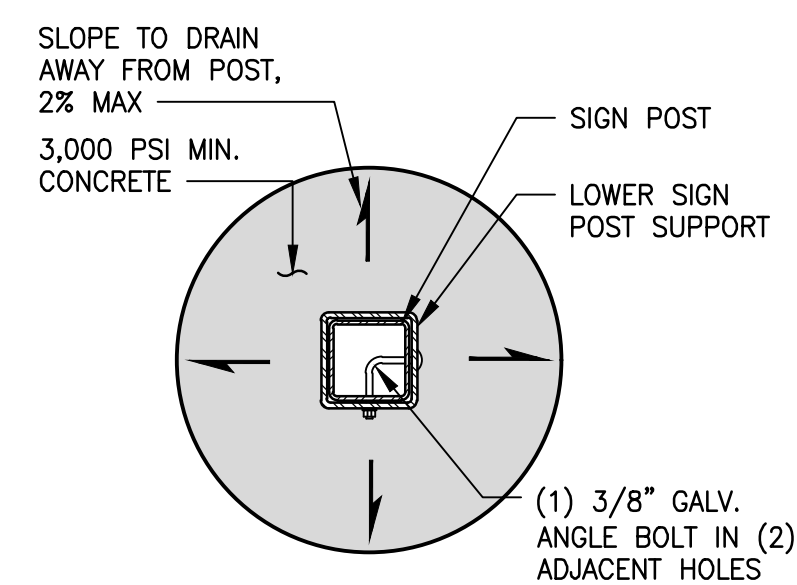
#### ELEVATION NATIVE BACKFILL SIGN SUPPORT DETAIL 5

NOT TO SCALE



#### ISOMETRIC LOWER SIGN POST SUPPORT ASSEMBLY DETAIL 6

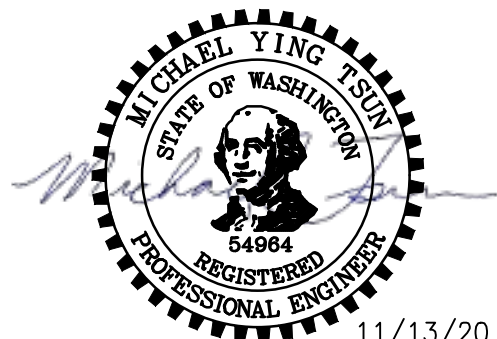
NOT TO SCALE



#### PLAN VIEW SIGN SUPPORT BASE DETAIL 7

NOT TO SCALE

CONFORMED DRAWING



**Parametrix**  
ENGINEERING · PLANNING · ENVIRONMENTAL SCIENCES

719 2ND AVENUE, SUITE 200 | SEATTLE, WA 98104  
P 206.394.3700  
WWW.PARAMETRIX.COM

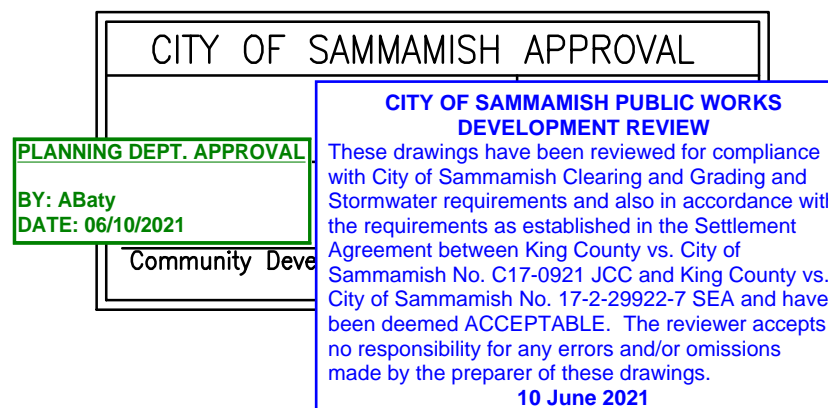
PROJECT NAME

**EAST LAKE SAMMAMISH  
MASTER PLAN TRAIL  
SOUTH SAMMAMISH SEGMENT B - PHASE 1**  
SAMMAMISH, WA

**MISCELLANEOUS DETAILS**

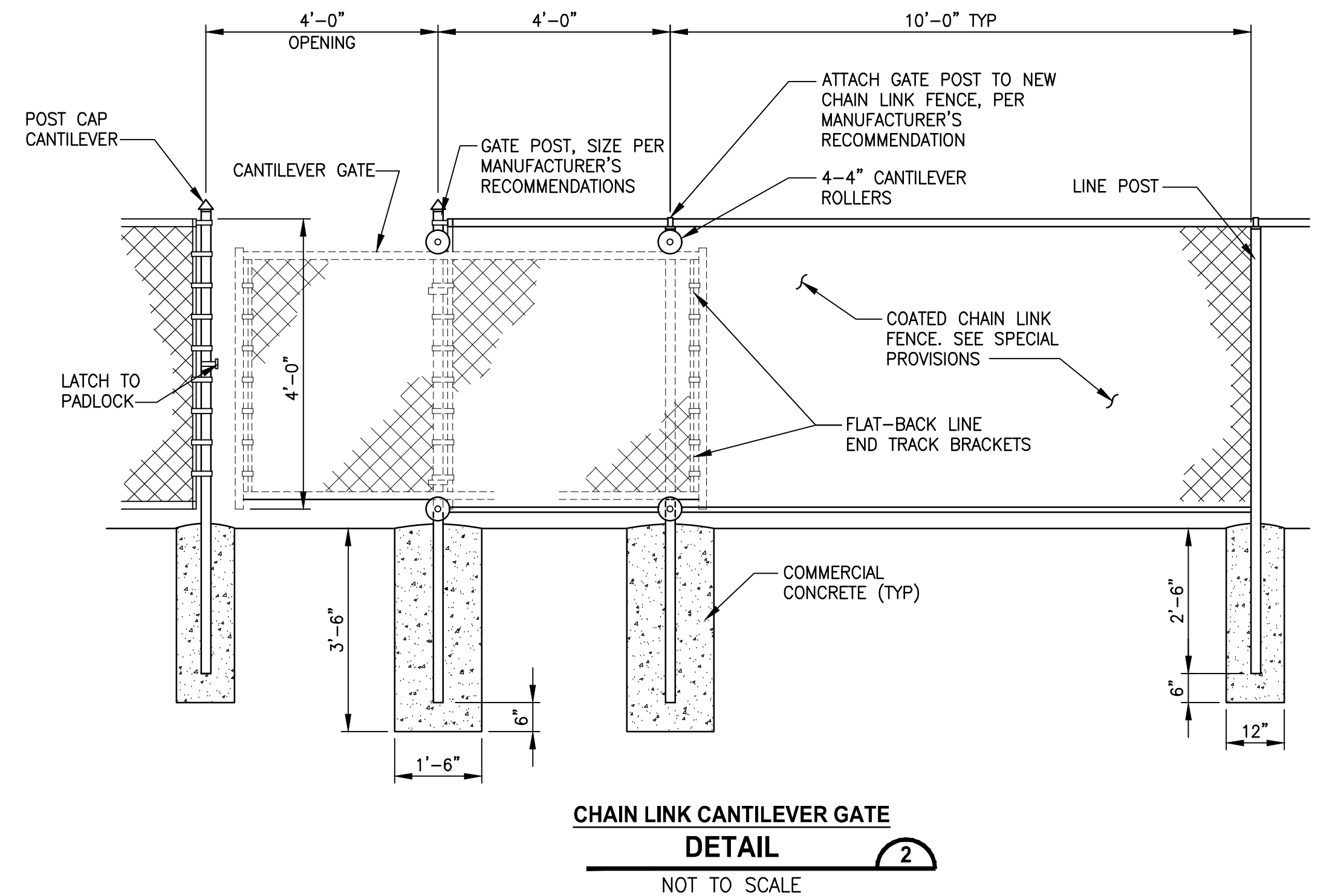
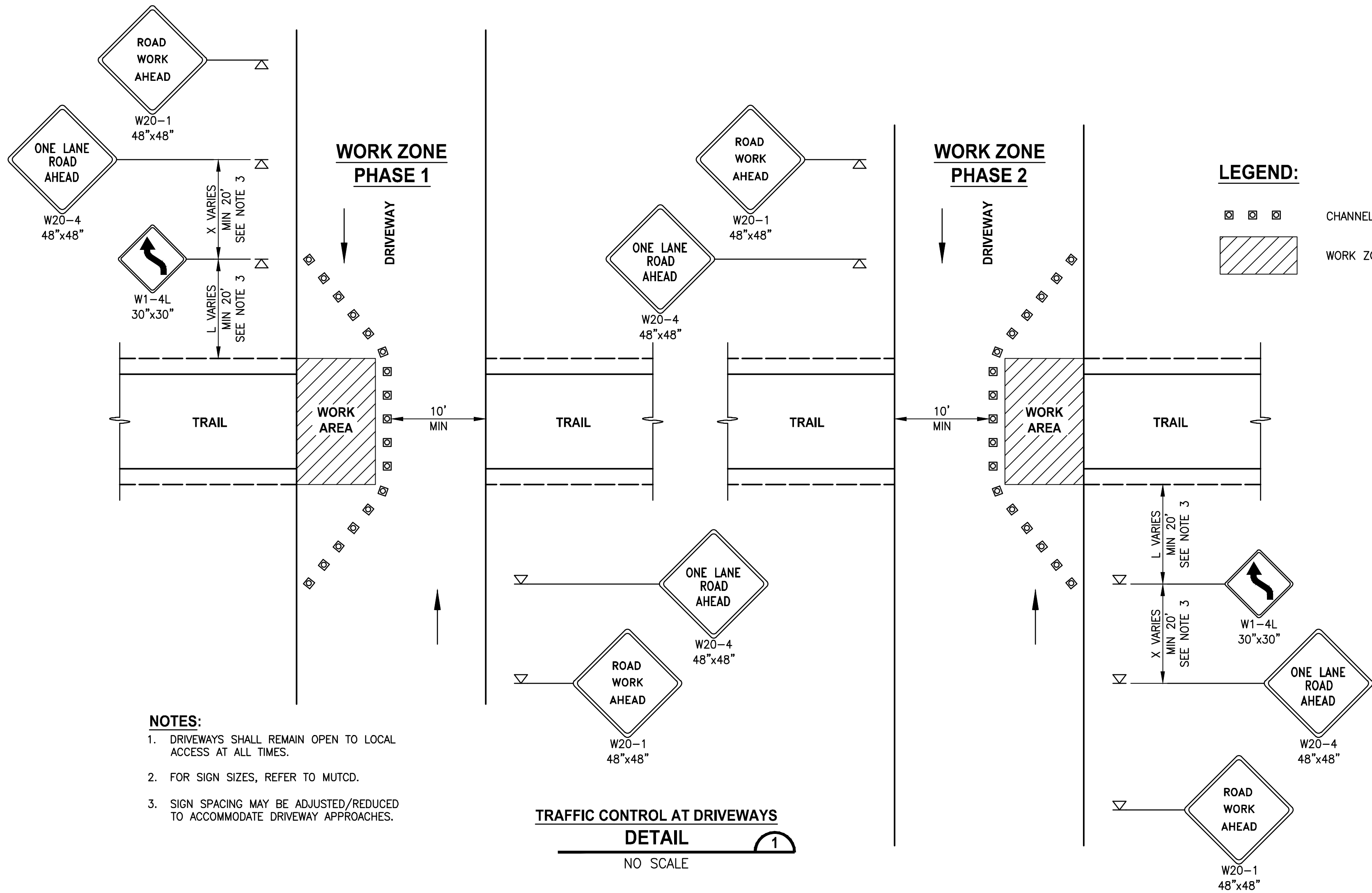
SHEET NO.  
142 OF 190

**MD8**





PATH: U:\PSO\Projects\clients\1521-KingCo\564-1521-075-ELST\98Sves\CADD\Phase 19\T03 Civil\Wdg-Phase1\ PLOTTED BY: purgbut DATE: Friday, November 13, 2020 9:57:14 AM LAYOUT: MD9



CONFORMED DRAWING



**Parametrix**  
ENGINEERING · PLANNING · ENVIRONMENTAL SCIENCES  
719 2ND AVENUE, SUITE 200 | SEATTLE, WA 98104  
P 206.394.3700  
WWW.PARAMETRIX.COM

PROJECT NAME  
**EAST LAKE SAMMAMISH  
MASTER PLAN TRAIL  
SOUTH SAMMAMISH SEGMENT B - PHASE 1**  
SAMMAMISH, WA

**MISCELLANEOUS DETAILS**

SHEET NO.  
143 OF 190  
**MD9**

