









DRIVEWAY #2 POINT TABLE				
POINT #	B—LINE STATION	OFFSET	ELEVATION	DESCRIPTION
1	298+42.89	6.00' LT	49.57	CONC—ASPH
2	298+42.93	11.65' LT	48.84	ME—ASPH
3	298+75.81	11.47' LT	49.11	ME—ASPH
4	298+75.77	6.01' LT	49.52	CONC—ASPH
5	298+75.66	5.99' RT	49.76	CONC—ASPH
6	298+78.47	8.08' RT	49.80	GRADE BREAK
7	298+85.85	13.56' RT	51.81	ME—ASPH
8	298+74.46	13.51' RT	51.18	ME—ASPH
9	298+59.37	13.43' RT	50.67	ME—ASPH
10	298+69.20	11.17' RT	50.45	CONTROL POINT
11	298+65.66	9.59' RT	50.11	CONTROL POINT
12	298+51.08	9.72' RT	50.37	ME—ASPH
13	298+42.79	5.97' RT	49.81	CONC—ASPH
14	298+68.65	5.99' RT	49.77	CONC—ASPH

DRIVEWAY #2 LINE TABLE						
LINE	LENGTH	BEARING	BEGIN EASTING	BEGIN NORTHING	END EASTING	END NORTHING
L200	15.90	N8° 29' 02"W	1332461.11	214708.41	1332458.77	214724.13
L201	19.55	N30° 31' 58"E	1332458.77	214724.13	1332468.70	214740.97
L202	22.18	N35° 27' 25"W	1332468.70	214740.97	1332455.83	214759.04
L203	34.82	N27° 49' 18"W	1332455.83	214759.04	1332439.58	214789.84

CONSTRUCTION NOTES:

- 1 HMA DRIVEWAY PAVEMENT SECTION SHALL BE 4" HMA CL 1/2 PG 64-22 OVER 8" CRUSHED SURFACING BASE COURSE.
- 2 PATTERNED CONCRETE INTERSECTION, SEE 
- 3 ROCK WALL, SEE 
- 4 CONCRETE DRIVEWAY APPROACH, SEE 
- 5 INSTALL STRUCTURAL EARTH WALL. SEE WALL DETAILS ON SHEET WD1.

LEGEND:

- | | | |
|---|-----------------------------|---|
|  | PATTERNED CONCRETE DRIVEWAY |  |
|  | CONCRETE DRIVEWAY APPROACH | |
|  | HMA | |
|  | GRAVEL DRIVEWAY | |

LAYOUT: DPI PATH: U:\PSO\Projects\Clients\1521-KingCo\554-1521-075-ELST\99Svcs\CADD\Phase 19\T03 Civil\Dwg-Phase1\ PLOTTED BY: purgabut DATE: Friday, November 13, 2020 9:43:00 AM

▷	REVISIONS	DATE	BY	DESIGNED M. TSUN
				DRAWN B. PURGANAN
				CHECKED Y. HO
				APPROVED J. BAILEY

**ONE INCH AT FULL SCALE.
IF NOT, SCALE ACCORDINGLY**

FILE NAME
BL1521075P19T03DP-01
JOB No.
554-1521-075 P19 T03
DATE
NOVEMBER 2020



PROJECT NAME

**EAST LAKE SAMMAMISH
MASTER PLAN TRAIL
SOUTH SAMMAMISH SEGMENT B - PHASE 1**

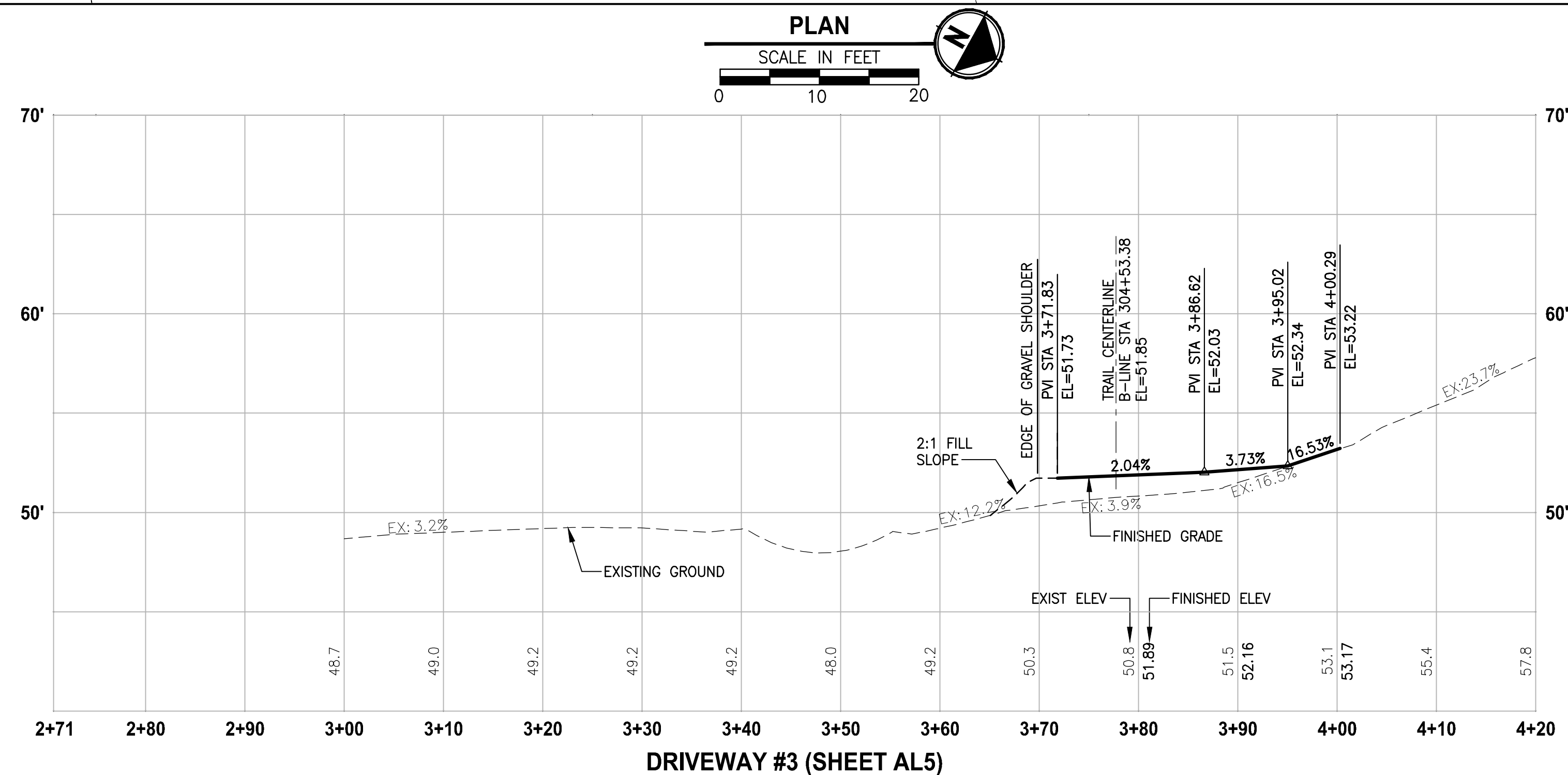
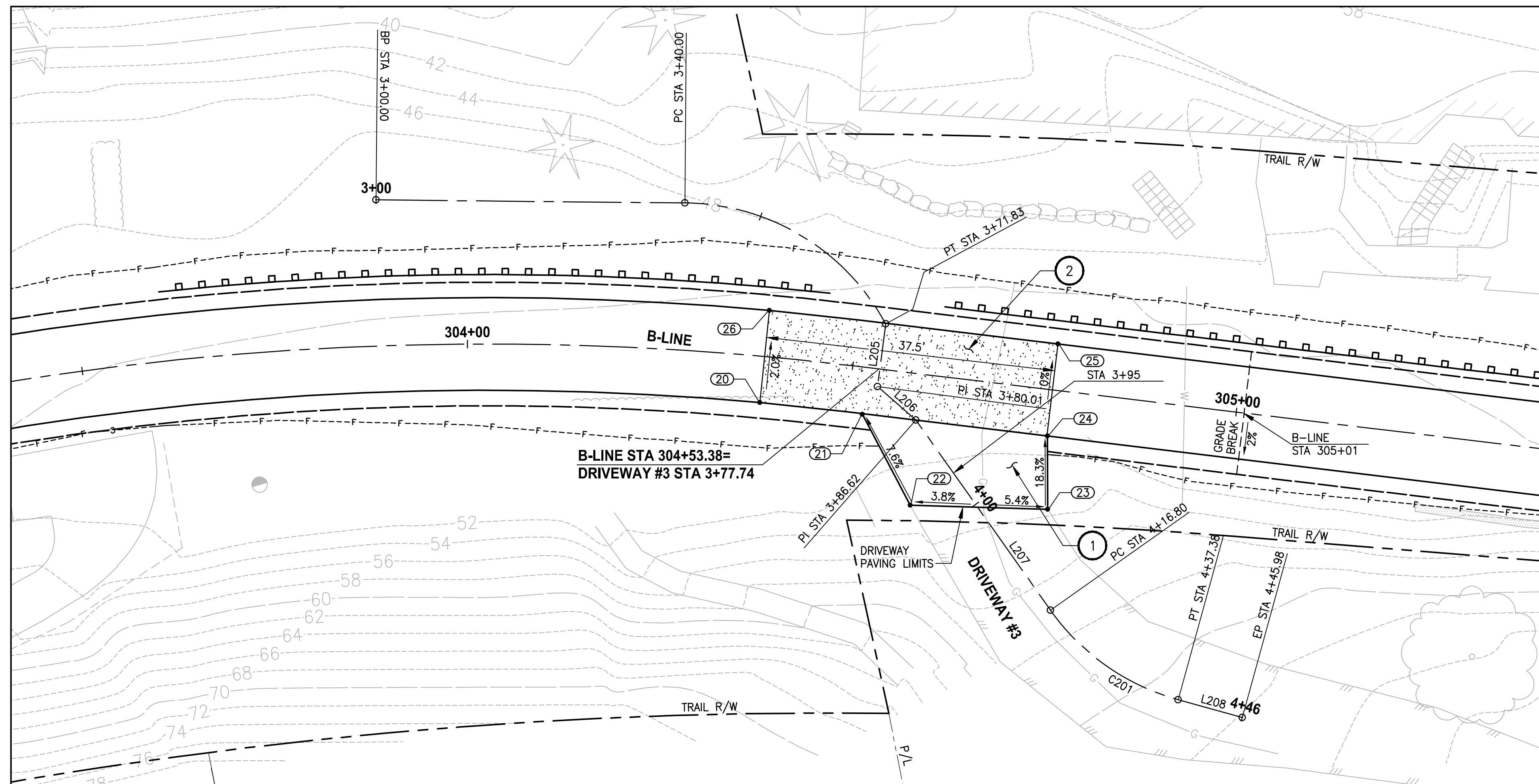
SAMMAMISH, WA

DRIVEWAY PLAN AND PROFILE

SHEET NO.
94 OF 190

DP1

City of Sammamish Page 95 of 191



CONFORMED DRAWING



11/13/20

Parametrix
ENGINEERING . PLANNING . ENVIRONMENTAL SCIENCES

719 2ND AVENUE, SUITE 200 | SEATTLE, WA 98104
P 206.394.3700
WWW.PARAMETRIX.COM

PROJECT NAME

**EAST LAKE SAMMAMISH
MASTER PLAN TRAIL
SOUTH SAMMAMISH SEGMENT B - PHASE 1**




SAMMAMISH, WA

DRIVEWAY PLAN AND PROFILE

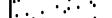



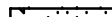

SHEET NO.
5 OF 190

DP2

CONSTRUCTION NOTES:

- 1 HMA DRIVEWAY PAVEMENT SECTION SHALL BE 4" HMA CL 1/2 PG 64-22 OVER 8" CRUSHED SURFACING BASE COURSE.
- 2 PATTERNED CONCRETE INTERSECTION, SEE 
- 3 ROCK WALL, SEE 
- 4 CONCRETE DRIVEWAY APPROACH, SEE 
- 5 INSTALL STRUCTURAL EARTH WALL. SEE WALL DETAILS ON SHEET WD1.

LEGEND:

- | | | |
|---|-----------------------------|---|
|  | PATTERNED CONCRETE DRIVEWAY |  |
|  | CONCRETE DRIVEWAY APPROACH | |
|  | HMA | |
|  | GRAVEL DRIVEWAY | |
|  | | |

DRIVEWAY #3 POINT TABLE

POINT #	B-LINE STATION	OFFSET	ELEVATION	DESCRIPTION
20	304+38.46	6.00' RT	51.71	CONC-ASPH
21	304+51.98	6.09' RT	51.93	AP-CONC-ASPH
22	304+59.53	17.02' RT	52.91	ME-ASPH
23	304+77.28	15.43' RT	53.70	ME-ASPH
24	304+76.11	6.00' RT	51.94	AP-CONC-ASPH
25	304+76.03	6.00' LT	51.95	CONC-ASPH
26	304+38.61	6.00' LT	51.47	CONC-ASPH

DRIVEWAY #3 LINE TABLE

LINE	LENGTH	BEARING	BEGIN EASTING	BEGIN NORTHING	END EASTING	END NORTHING
L205	8.17	N68° 42' 11"E	1332020.40	215110.58	1332028.02	215113.55
L206	6.62	N12° 22' 01"E	1332028.02	215113.55	1332029.43	215120.01
L207	30.17	N25° 55' 07"E	1332029.43	215120.01	1332042.62	215147.01
L208	8.60	N13° 22' 47"W	1332044.83	215167.21	1332042.83	215175.57

DRIVEWAY #3 CURVE TABLE

CURVE	LENGTH	RADIUS	DELTA	BEGIN EASTING	BEGIN NORTHING	END EASTING	END NORTHING
C201	20.58	30.00	39°17'54"	1332042.62	215147.15	1332044.83	215167.21

CITY OF SAMMAMISH APPROVAL

PLANNING DEPT. APPROVAL

BY: ABaty
DATE: 06/10/2021

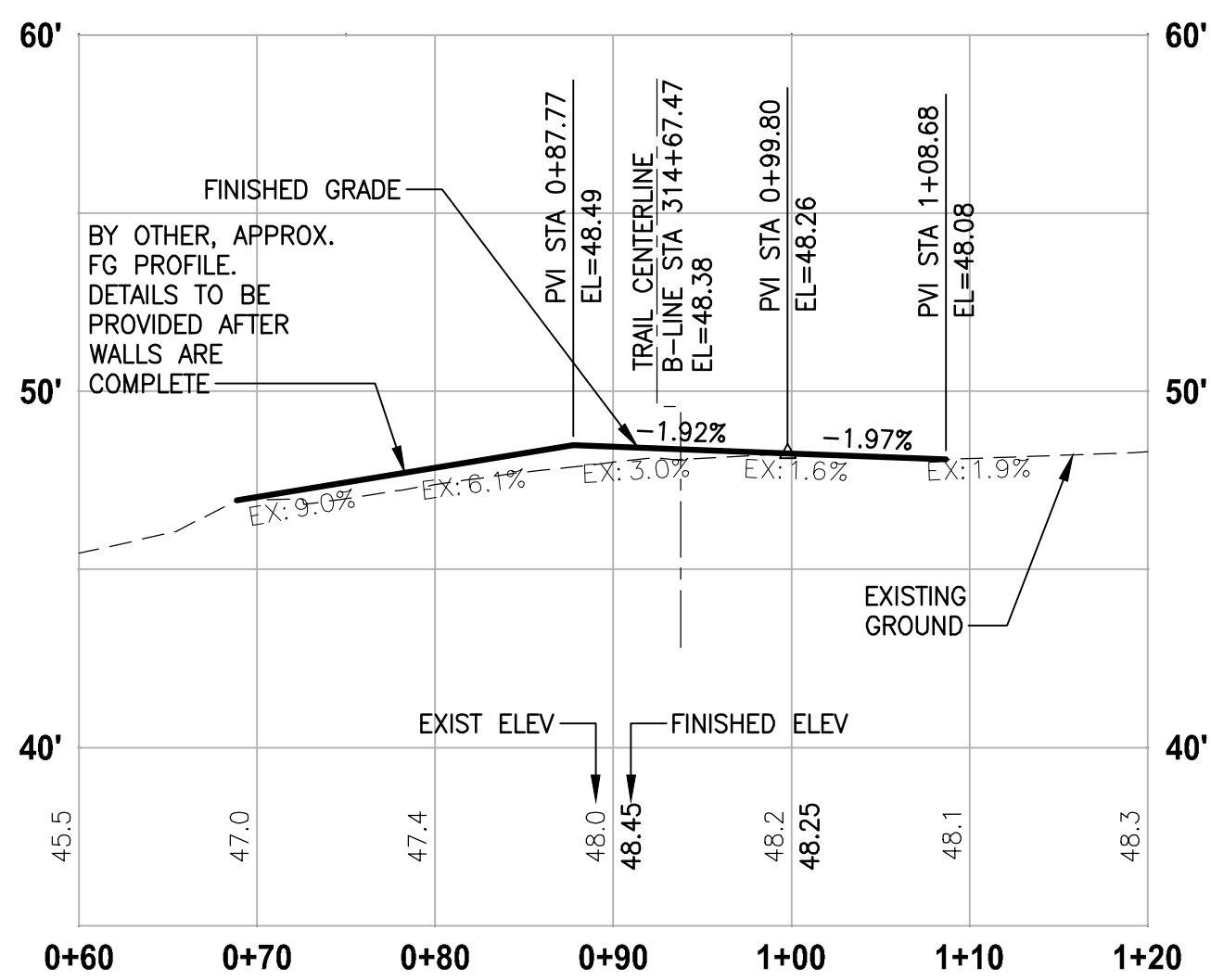
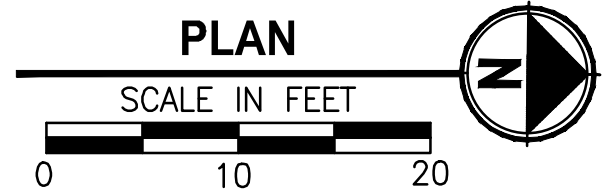
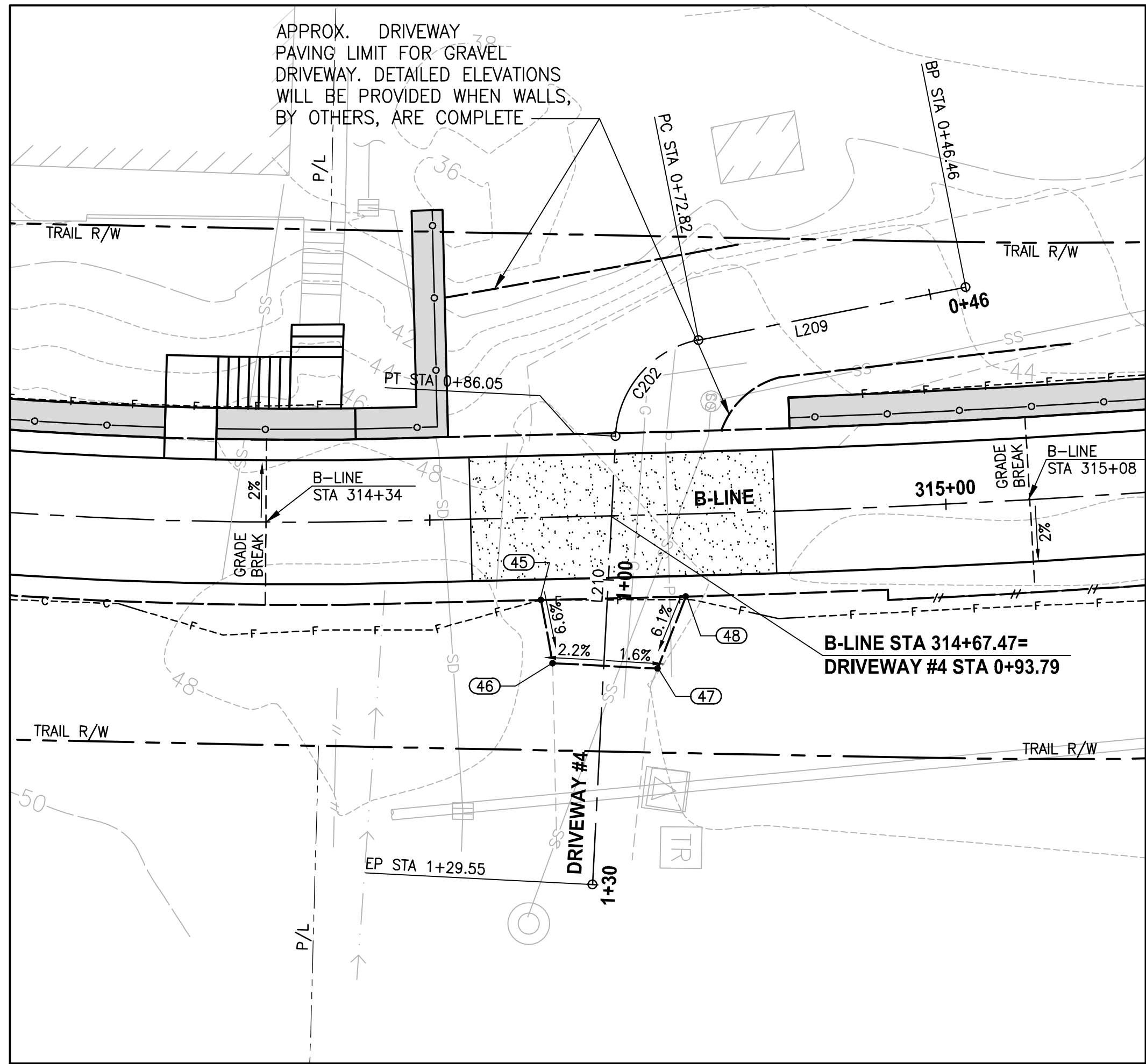
Community Deve

CITY OF SAMMAMISH PUBLIC WORKS
DEVELOPMENT REVIEW

These drawings have been reviewed for compliance with City of Sammamish Clearing and Grading and Stormwater requirements and also in accordance with the requirements as established in the Settlement Agreement between King County vs. City of Sammamish No. C17-0921 JCC and King County vs. City of Sammamish No. 17-2-29922-7 SEA and have been deemed ACCEPTABLE. The reviewer accepts no responsibility for any errors and/or omissions made by the preparer of these drawings.

10 June 2021

PATH: U:\PSO\Projects\01521-075-ELST\99Sves\CADD\Phase 19\T03 Civil\Draw-Phase1\ PLOTTED BY: purgabut DATE: Friday, November 13, 2020 9:43:23 AM LAYOUT: DP3



DRIVEWAY #4 (SHEET AL7)

HORIZ: 1"=10'

VERT: 1"=5'

DRIVEWAY #4 POINT TABLE				
POINT #	B-LINE STATION	OFFSET	ELEVATION	DESCRIPTION
45	314+60.58	8.00' RT	48.61	GRAVEL-AP
46	314+61.57	14.14' RT	48.20	ME-GRAVEL
47	314+71.70	14.91' RT	48.01	ME-GRAVEL
48	314+74.60	8.00' RT	48.47	GRAVEL-AP

DRIVEWAY #4 LINE TABLE						
LINE	LENGTH	BEARING	BEGIN EASTING	BEGIN NORTHING	END EASTING	END NORTHING
L209	26.36	S11° 56' 57"E	1331734.97	216106.46	1331740.43	216080.67
L210	43.50	S87° 45' 05"E	1331749.82	216072.75	1331793.29	216071.04

DRIVEWAY #4 CURVE TABLE						
CURVE	LENGTH	RADIUS	DELTA	BEGIN EASTING	BEGIN NORTHING	END EASTING
C202	13.23	10.00	75°48'08"	1331740.43	216080.67	1331749.82

CONSTRUCTION NOTES:

- 1 HMA DRIVEWAY PAVEMENT SECTION SHALL BE 4" HMA CL 1/2 PG 64-22 OVER 8" CRUSHED SURFACING BASE COURSE.
- 2 PATTERNED CONCRETE INTERSECTION, SEE 1 MD4
- 3 ROCK WALL, SEE 1 MD1
- 4 CONCRETE DRIVEWAY APPROACH, SEE 6 MD4
- 5 INSTALL STRUCTURAL EARTH WALL. SEE WALL DETAILS ON SHEET WD1.

LEGEND:

- PATTERNED CONCRETE DRIVEWAY 3 MD4
- CONCRETE DRIVEWAY APPROACH
- HMA
- GRAVEL DRIVEWAY

CONFORMED DRAWING



Parametrix
ENGINEERING · PLANNING · ENVIRONMENTAL SCIENCES

719 2ND AVENUE, SUITE 200 | SEATTLE, WA 98104
P 206.394.3700
WWW.PARAMETRIX.COM

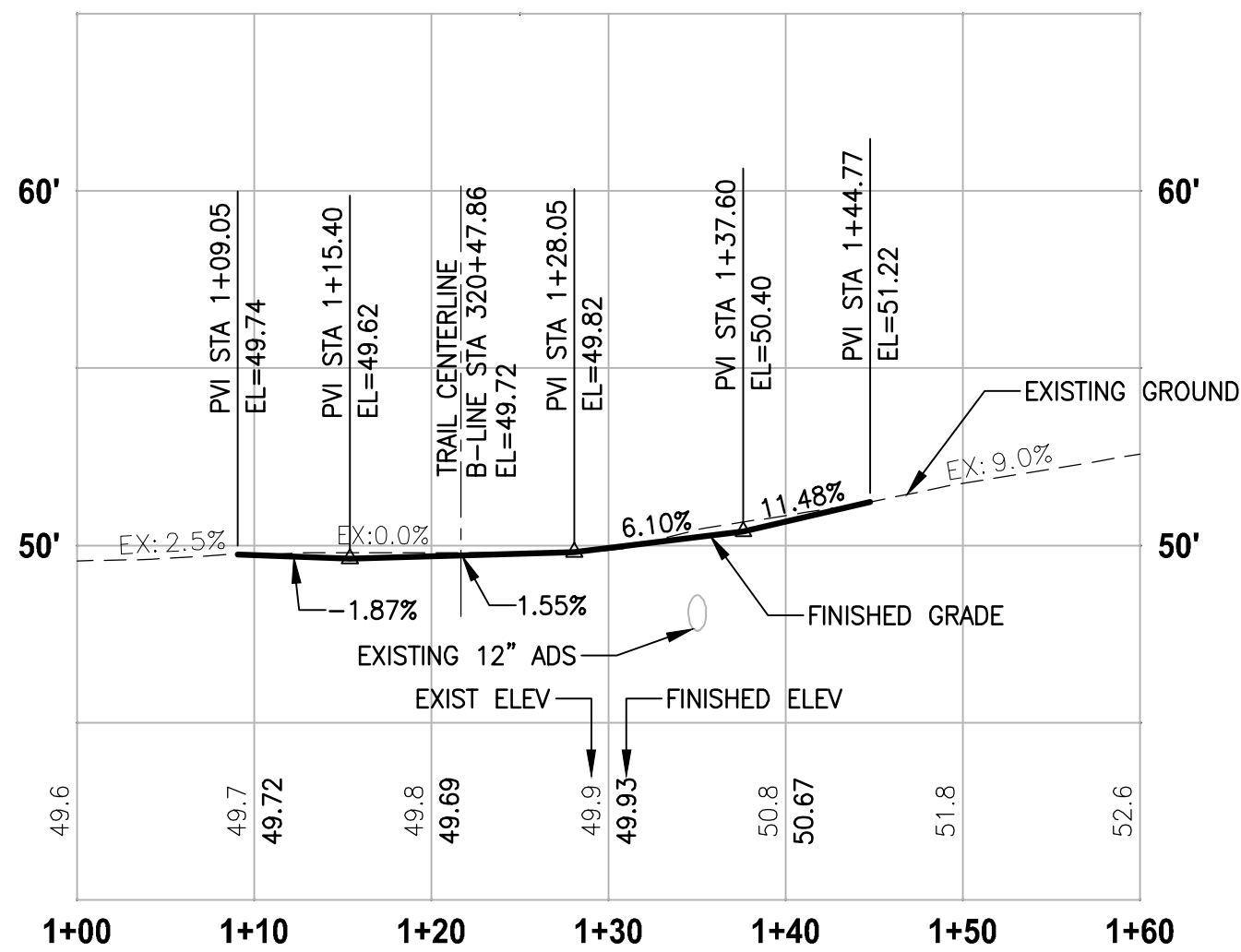
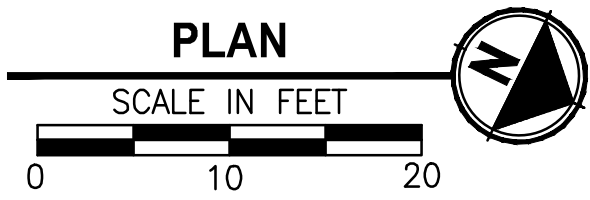
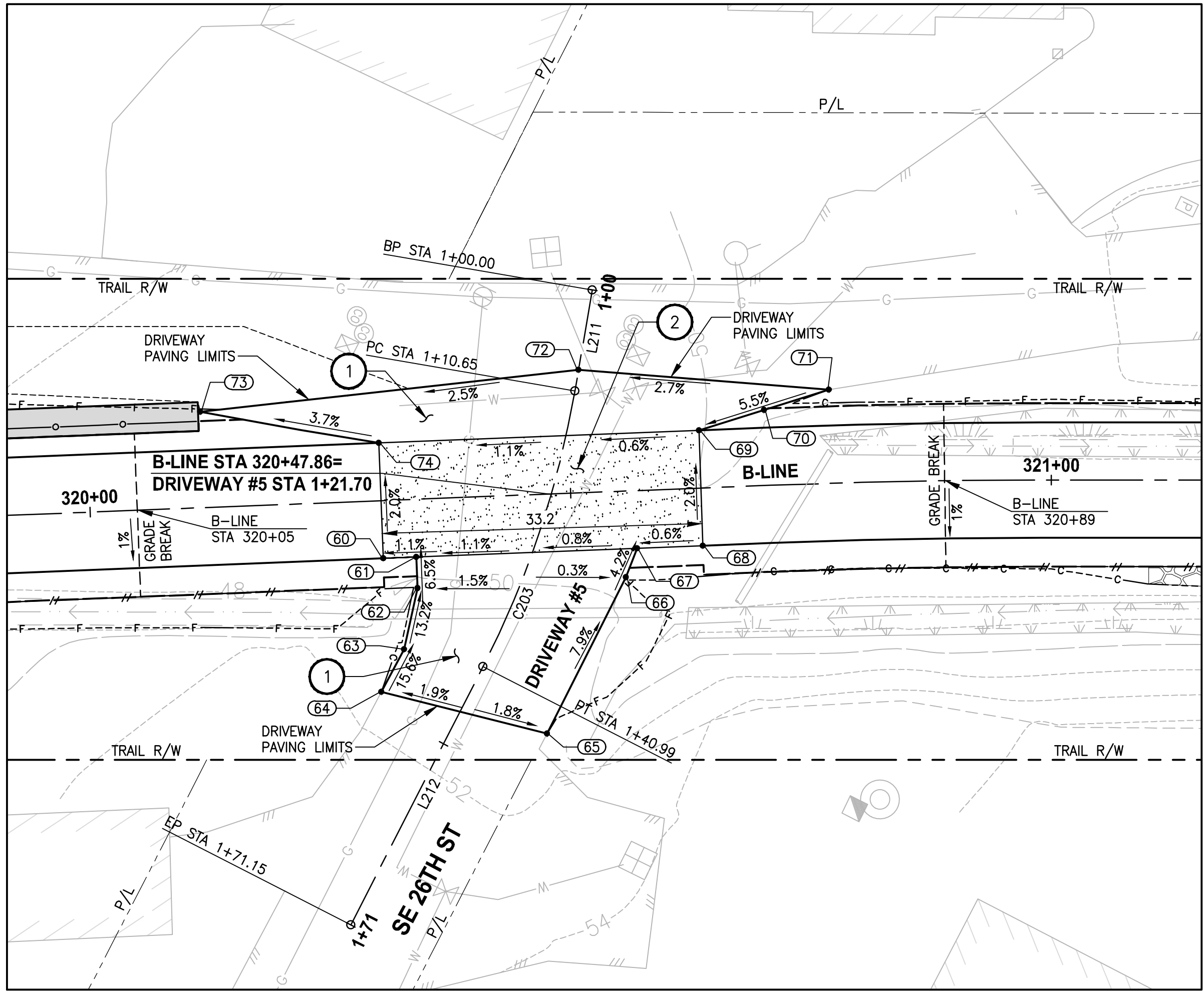
PROJECT NAME
**EAST LAKE SAMMAMISH
MASTER PLAN TRAIL
SOUTH SAMMAMISH SEGMENT B - PHASE 1**
SAMMAMISH, WA

DRIVEWAY PLAN AND PROFILE

SHEET NO.
96 OF 190

DP3

U:\PSO\Projects\Clients\1521-KingCo\554-1521-075-ELST\99Sves\CADD\Phase 19\T03 Civil\Draw-Phase1\ PLOTTED BY: purgaban DATE: Friday, November 13, 2020 9:43:35 AM LAYOUT: DP4



DRIVEWAY #5 (SHEET AL9)
HORIZ: 1"=10'
VERT: 1"=5'

DRIVEWAY #5 POINT TABLE				
POINT #	B-LINE STATION	OFFSET	ELEVATION	DESCRIPTION
60	320+30.29	6.00' RT	49.65	CONC-ASPH
61	320+33.72	6.00' RT	49.69	CONC-ASPH
62	320+33.72	9.23' RT	49.90	AP
63	320+32.06	15.53' RT	50.78	AP
64	320+29.54	19.86' RT	51.56	ME-ASPH
65	320+46.56	24.89' RT	51.22	ME-ASPH
66	320+55.40	8.96' RT	50.00	AP
67	320+56.69	6.00' RT	49.86	CONC-ASPH
68	320+63.51	6.00' RT	49.85	CONC-ASPH
69	320+63.61	6.00' LT	49.67	CONC-ASPH
70	320+70.44	7.86' LT	50.06	MIDPOINT
71	320+77.18	9.74' LT	50.45	ME-ASPH
72	320+51.33	12.80' LT	49.74	ME-ASPH
73	320+11.87	9.99' LT	48.71	ME-ASPH
74	320+30.29	6.00' LT	49.41	CONC-ASPH

DRIVEWAY #5 LINE TABLE						
LINE	LENGTH	BEARING	BEGIN EASTING	BEGIN NORTHING	END EASTING	END NORTHING
L211	10.65	N73° 30' 09"E	1331555.85	216611.13	1331566.07	216614.15
L212	30.17	S89° 06' 59"E	1331596.01	216618.26	1331626.17	216617.79

DRIVEWAY #5 CURVE TABLE							
CURVE	LENGTH	RADIUS	DELTA	BEGIN EASTING	BEGIN NORTHING	END EASTING	END NORTHING
C203	30.34	100.00	17°22'52"	1331566.07	216614.15	1331596.01	216618.26

CONSTRUCTION NOTES:

- 1 HMA DRIVEWAY PAVEMENT SECTION SHALL BE 4" HMA CL 1/2 PG 64-22 OVER 8" CRUSHED SURFACING BASE COURSE.
- 2 PATTERNED CONCRETE INTERSECTION, SEE 1 MD4
- 3 ROCK WALL, SEE 1 MD1
- 4 CONCRETE DRIVEWAY APPROACH, SEE 6 MD4
- 5 INSTALL STRUCTURAL EARTH WALL. SEE WALL DETAILS ON SHEET WD1.

LEGEND:

- PATTERNED CONCRETE DRIVEWAY 3 MD4
- CONCRETE DRIVEWAY APPROACH
- HMA
- GRAVEL DRIVEWAY

CITY OF SAMMAMISH APPROVAL

PLANNING DEPT. APPROVAL
BY: ABaty
DATE: 06/10/2021

Community Development
CITY OF SAMMAMISH PUBLIC WORKS DEVELOPMENT REVIEW
These drawings have been reviewed for compliance with City of Sammamish Clearing and Grading and Stormwater requirements and also in accordance with the requirements as established in the Settlement Agreement between King County vs. City of Sammamish No. C17-0921 JCC and King County vs. City of Sammamish No. 17-2-28922-7 SEA and have been deemed ACCEPTABLE. The reviewer accepts no responsibility for any errors and/or omissions made by the preparer of these drawings.
10 June 2021

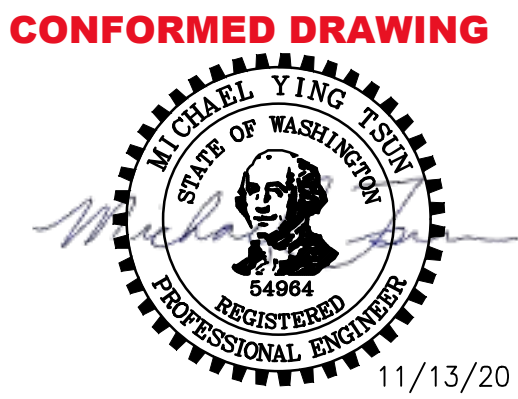
REVISIONS	DATE	BY	DESIGNED
			M. TSUN
			DRAWN
			B. PURGANAN
			CHECKED
			Y. HO
			APPROVED
			J. BAILEY

ONE INCH AT FULL SCALE.
IF NOT, SCALE ACCORDINGLY

FILE NAME
BL1521075P19T03DP-01

JOB No.
554-1521-075 P19 T03

DATE
NOVEMBER 2020



11/13/20

Parametrix
ENGINEERING · PLANNING · ENVIRONMENTAL SCIENCES

719 2ND AVENUE, SUITE 200 | SEATTLE, WA 98104
P 206.394.3700
WWW.PARAMETRIX.COM

PROJECT NAME

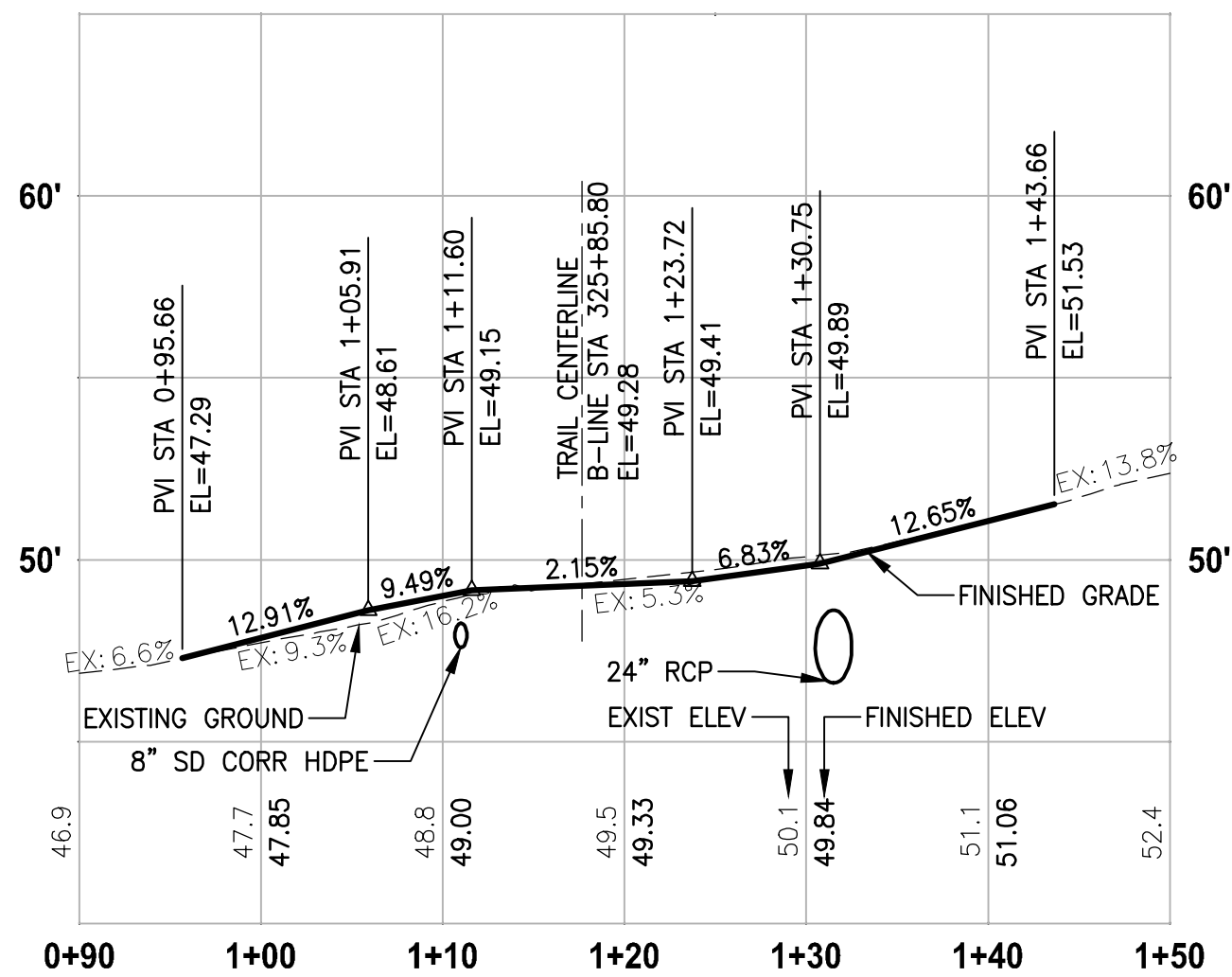
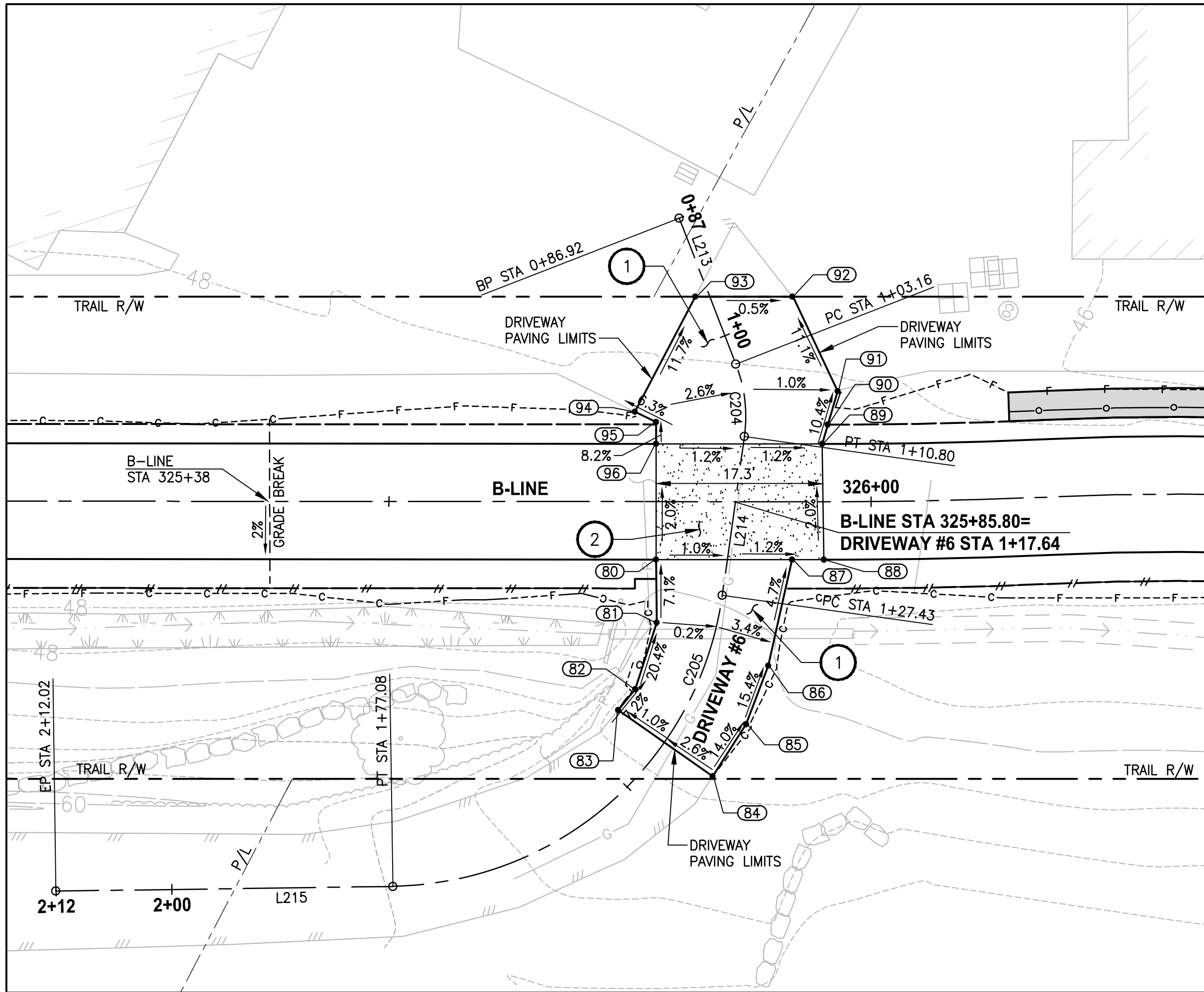
EAST LAKE SAMMAMISH
MASTER PLAN TRAIL
SOUTH SAMMAMISH SEGMENT B - PHASE 1
SAMMAMISH, WA

DRIVEWAY PLAN AND PROFILE

SHEET NO.
97 OF 190

DP4

PATH: U:\PSO\Projects\1521-KingCo\554-1521-075-ELST\99Sves\CADD\Phase 19\T03 Civil\Draw-Phase\ PLOTTED BY: purgabut DATE: Friday, November 13, 2020 9:43:48 AM LAYOUT: DP5



DRIVEWAY #6 POINT TABLE				
POINT #	B-LINE STATION	OFFSET	ELEVATION	DESCRIPTION
80	325+77.72	6.00' RT	???	CONC-ASPH
81	325+77.77	12.56' RT	49.88	AP
82	325+75.56	19.45' RT	51.36	AP
83	325+73.79	21.62' RT	51.56	ME-ASPH
84	325+83.59	28.47' RT	51.70	ME-ASPH
85	325+87.07	23.08' RT	50.80	AP
86	325+89.36	17.01' RT	49.80	AP
87	325+91.82	6.00' RT	49.27	CONC-ASPH
88	325+95.13	6.00' RT	49.24	CONC-ASPH
89	325+94.93	6.00' LT	49.05	CONC-ASPH
90	325+95.52	8.00' LT	48.83	ASPH
91	325+96.54	11.46' LT	48.46	ME-ASPH
92	325+91.82	21.26' LT	47.25	ME-ASPH
93	325+81.76	21.25' LT	47.28	ME-ASPH
94	325+75.50	9.31' LT	48.85	ME-ASPH
95	325+77.71	8.24' LT	49.00	AP
96	325+77.72	6.00' LT	49.18	CONC-ASPH

DRIVEWAY #6 LINE TABLE						
LINE	LENGTH	BEARING	BEGIN EASTING	BEGIN NORTHING	END EASTING	END NORTHING
L213	16.23	N42° 30' 31"E	1331314.29	217080.53	1331325.26	217092.50
L214	16.63	N71° 41' 53"E	1331331.60	217096.60	1331347.39	217101.82
L215	34.94	S27° 01' 24"E	1331389.56	217084.50	1331405.44	217053.37

DRIVEWAY #6 CURVE TABLE						
CURVE	LENGTH	RADIUS	DELTA	BEGIN EASTING	BEGIN NORTHING	END EASTING
C204	7.64	15.00	29°11'22"	1331325.26	217092.50	1331331.60
C205	49.65	35.00	81°16'43"	1331347.39	217101.82	1331389.56

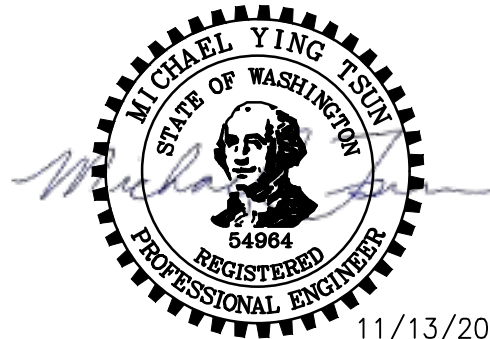
CONSTRUCTION NOTES:

- 1 HMA DRIVEWAY PAVEMENT SECTION SHALL BE 4" HMA CL 1/2 PG 64-22 OVER 8" CRUSHED SURFACING BASE COURSE.
- 2 PATTERNED CONCRETE INTERSECTION, SEE 1 MD4
- 3 ROCK WALL, SEE 1 MD1
- 4 CONCRETE DRIVEWAY APPROACH, SEE 6 MD4
- 5 INSTALL STRUCTURAL EARTH WALL. SEE WALL DETAILS ON SHEET WD1.

LEGEND:

- PATTERNED CONCRETE DRIVEWAY 3 MD4
- CONCRETE DRIVEWAY APPROACH
- HMA
- GRAVEL DRIVEWAY

CONFORMED DRAWING



11/13/20

Parametrix

ENGINEERING · PLANNING · ENVIRONMENTAL SCIENCES

719 2ND AVENUE, SUITE 200 | SEATTLE, WA 98104
P 206.394.3700
WWW.PARAMETRIX.COM

PROJECT NAME

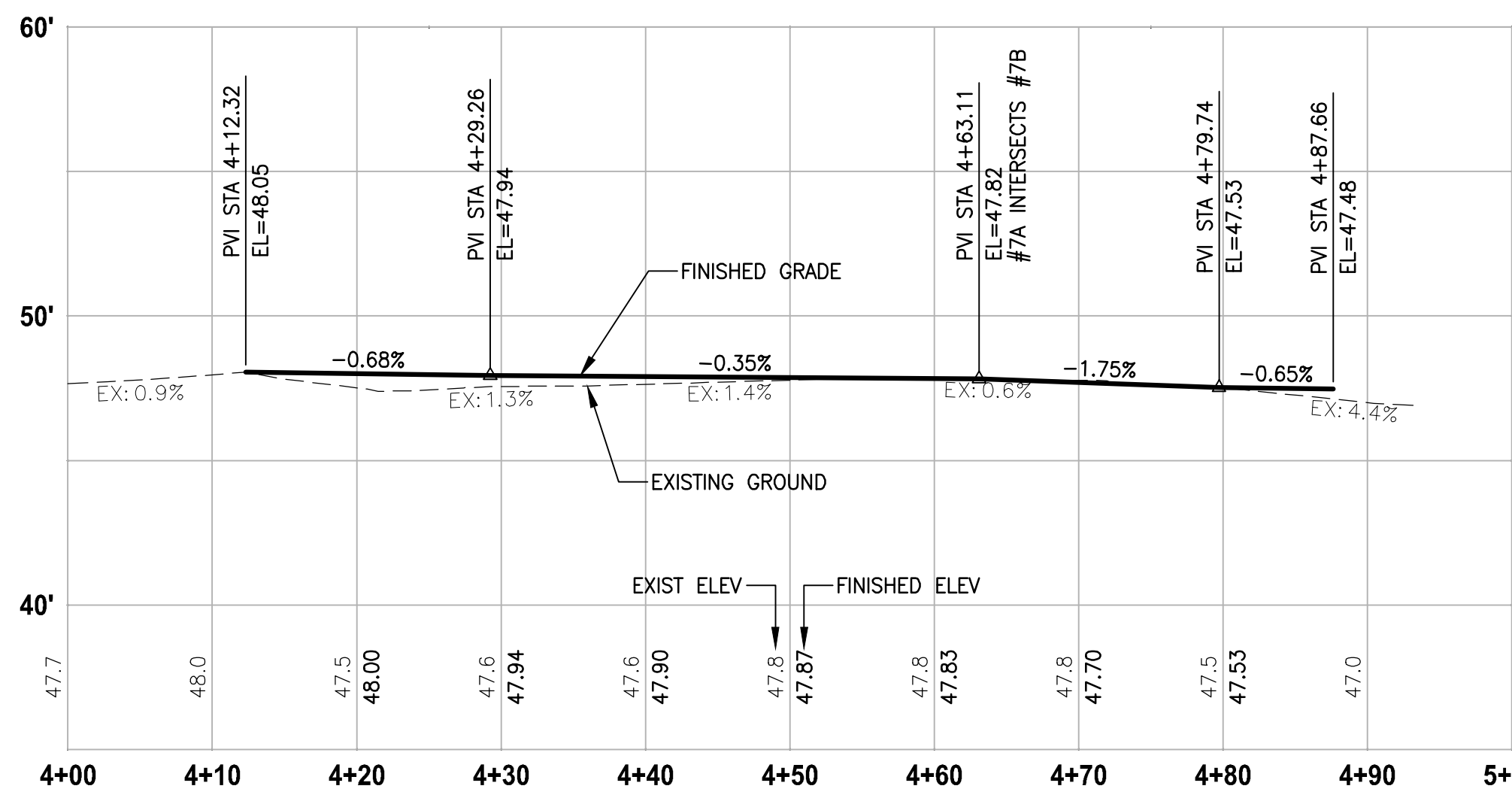
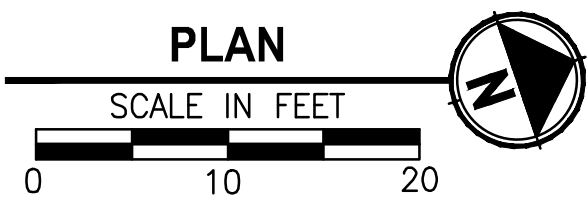
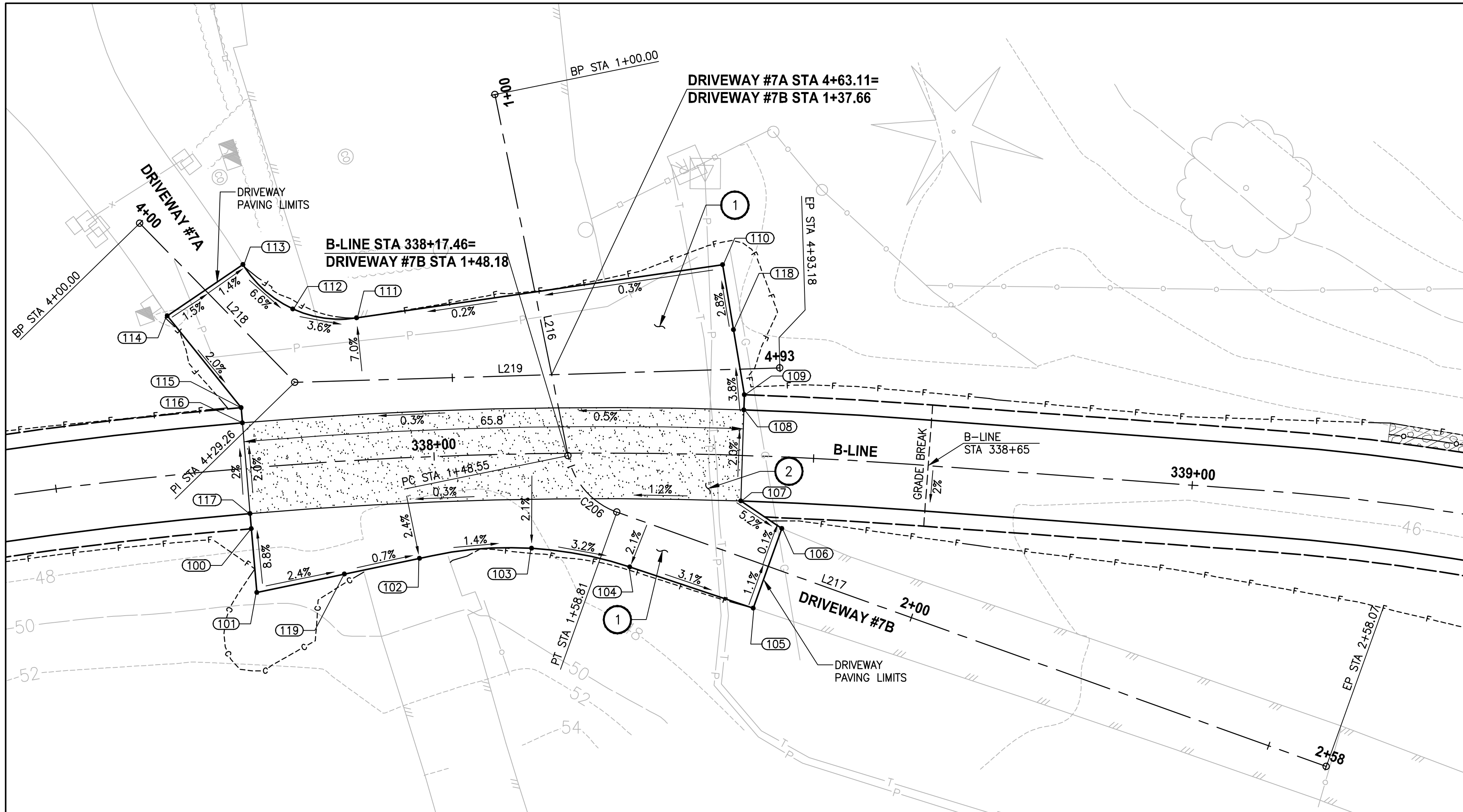
EAST LAKE SAMMAMISH
MASTER PLAN TRAIL
SOUTH SAMMAMISH SEGMENT B - PHASE 1
SAMMAMISH, WA

DRIVEWAY PLAN AND PROFILE

SHEET NO.
98 OF 190

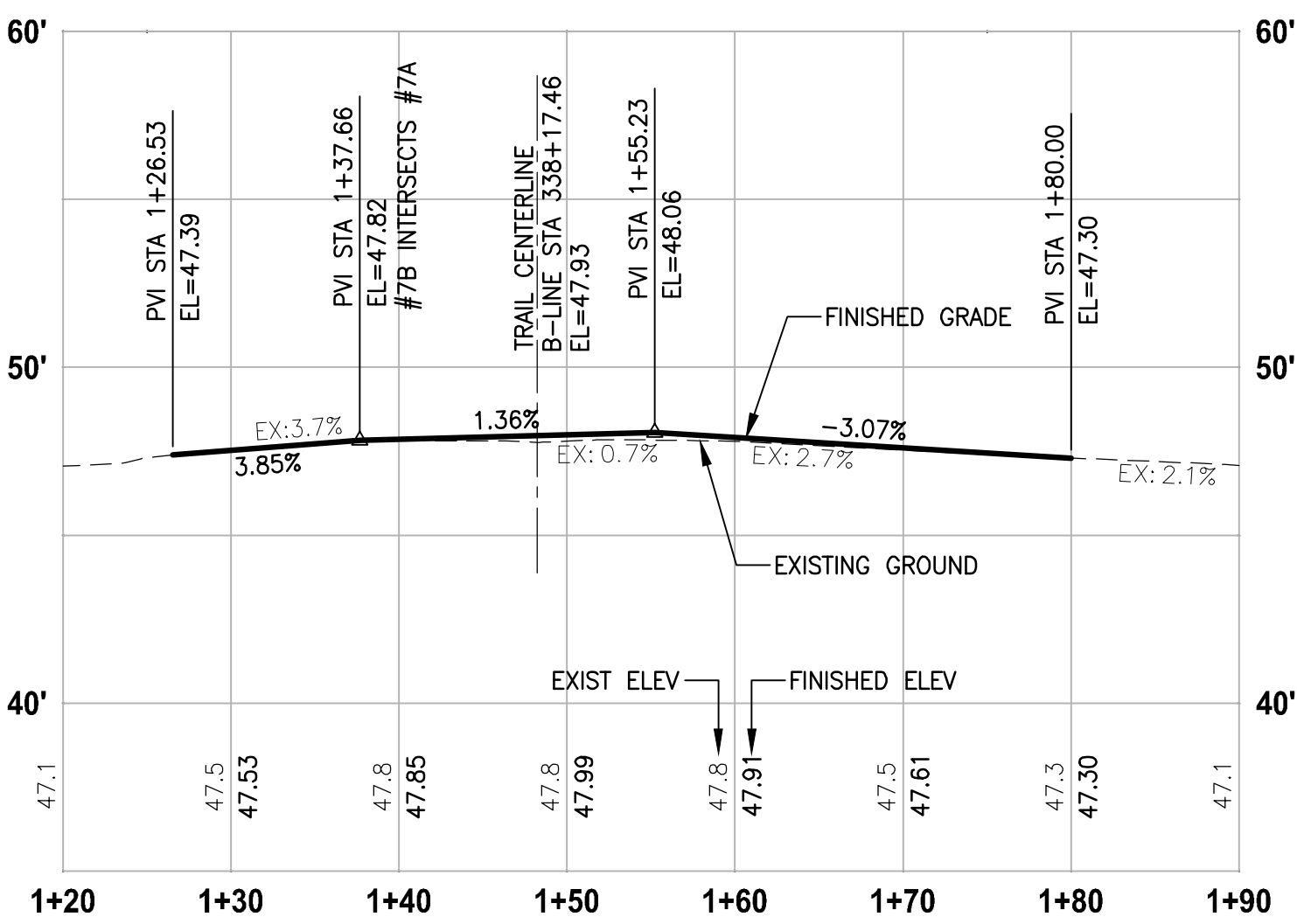
DP5

PATH: U:\PSO\Projects\1521-KingCo\554-1521-075-ELST\99Sves\CADD\Phase 19\T03 Civil\Draw-Phase1\ PLOTTED BY: purgaban DATE: Friday, November 13, 2020 9:44:06 AM LAYOUT: DP6



DRIVEWAY #7A (SHEET AL12)

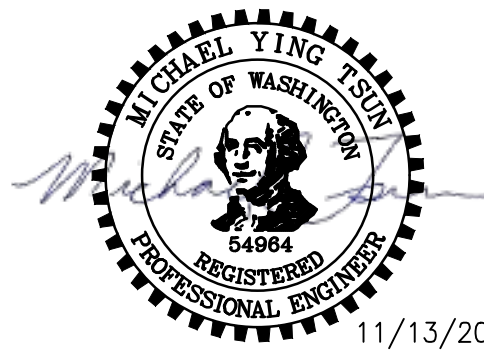
HORIZ: 1"=10'
VERT: 1"=5'



DRIVEWAY #7B (SHEET AL12)

HORIZ: 1"=10'
VERT: 1"=5'

CONFORMED DRAWING



ONE INCH AT FULL SCALE.
IF NOT, SCALE ACCORDINGLY
FILE NAME
BL1521075P19T03DP-01
JOB No.
554-1521-075 P19 T03
DATE
NOVEMBER 2020

REVISIONS	DATE	BY	DESIGNED
			M. TSUN
			DRAWN
			B. PURGANAN
			CHECKED
			Y. HO
			APPROVED
			J. BAILEY

DRIVEWAY #7A AND #7B POINT TABLE				
POINT #	B-LINE STATION	OFFSET	ELEVATION	DESCRIPTION
100	337+75.20	8.00' RT	48.00	AP-ASPH
101	337+75.20	16.44' RT	48.70	AP-ASPH
102	337+97.49	13.33' RT	48.42	CURVE PC
103	338+12.64	12.46' RT	48.29	CURVE MIDPOINT
104	338+25.88	15.01' RT	47.95	CURVE PT
105	338+42.81	20.07' RT	47.36	ME-ASPH
106	338+46.24	9.43' RT	47.29	ME-ASPH
107	338+40.61	6.00' RT	47.63	CONC-ASPH
108	338+40.61	6.00' LT	47.69	CONC-ASPH
109	338+40.61	8.00' LT	47.65	AP-ASPH
110	338+37.34	25.04' LT	47.52	AP-ASPH
111	337+90.84	18.72' LT	47.33	CURVE PC
112	337+82.82	20.43' LT	47.67	CURVE MIDPOINT
113	337+76.96	26.76' LT	48.00	ME-CURVE PT
114	337+66.85	20.94' LT	48.11	ME-ASPH
115	337+75.20	8.00' LT	47.78	AP-ASPH
116	337+75.20	6.00' LT	47.70	AP-CONC
117	337+75.20	6.00' RT	47.94	AP-CONC
118	338+38.95	16.52' LT	47.28	ASPH-MIDPOINT
119	337+87.23	14.87' RT	48.43	ASPH-MIDPOINT

DRIVEWAY #7A LINE TABLE						
LINE	LENGTH	BEARING	BEGIN EASTING	BEGIN NORTHING	END EASTING	END NORTHING
L218	29.26	N64° 32' 29"E	1330918.06	218194.45	1330944.48	218207.03
L219	63.92	N17° 05' 16"E	1330944.48	218207.03	1330963.26	218268.12

DRIVEWAY #7B LINE TABLE						
LINE	LENGTH	BEARING	BEGIN EASTING	BEGIN NORTHING	END EASTING	END NORTHING
L216	48.55	S82° 41' 02"E	1330917.08	218244.18	1330965.23	218238.00
L217	99.26	N38° 30' 20"E	1330974.33	218241.69	1331036.13	218319.36

DRIVEWAY #7B CURVE TABLE						
CURVE	LENGTH	RADIUS	DELTA	BEGIN EASTING	BEGIN NORTHING	END EASTING
C206	10.26	10.00	58°48'38"	1330965.23	218238.00	1330974.33

CONSTRUCTION NOTES:

- HMA DRIVEWAY PAVEMENT SECTION SHALL BE 4" HMA CL 1/2 PG 64-22 OVER 8" CRUSHED SURFACING BASE COURSE.
- PATTERNED CONCRETE INTERSECTION, SEE 1 MD4
- ROCK WALL, SEE 1 MD1
- CONCRETE DRIVEWAY APPROACH, SEE 6 MD4
- INSTALL STRUCTURAL EARTH WALL. SEE WALL DETAILS ON SHEET WD1.

LEGEND:

- PATTERNED CONCRETE DRIVEWAY 3 MD4
- CONCRETE DRIVEWAY APPROACH
- HMA
- GRAVEL DRIVEWAY

CITY OF SAMMAMISH APPROVAL

PLANNING DEPT. APPROVAL
BY: ABaty
DATE: 06/10/2021
Community Development

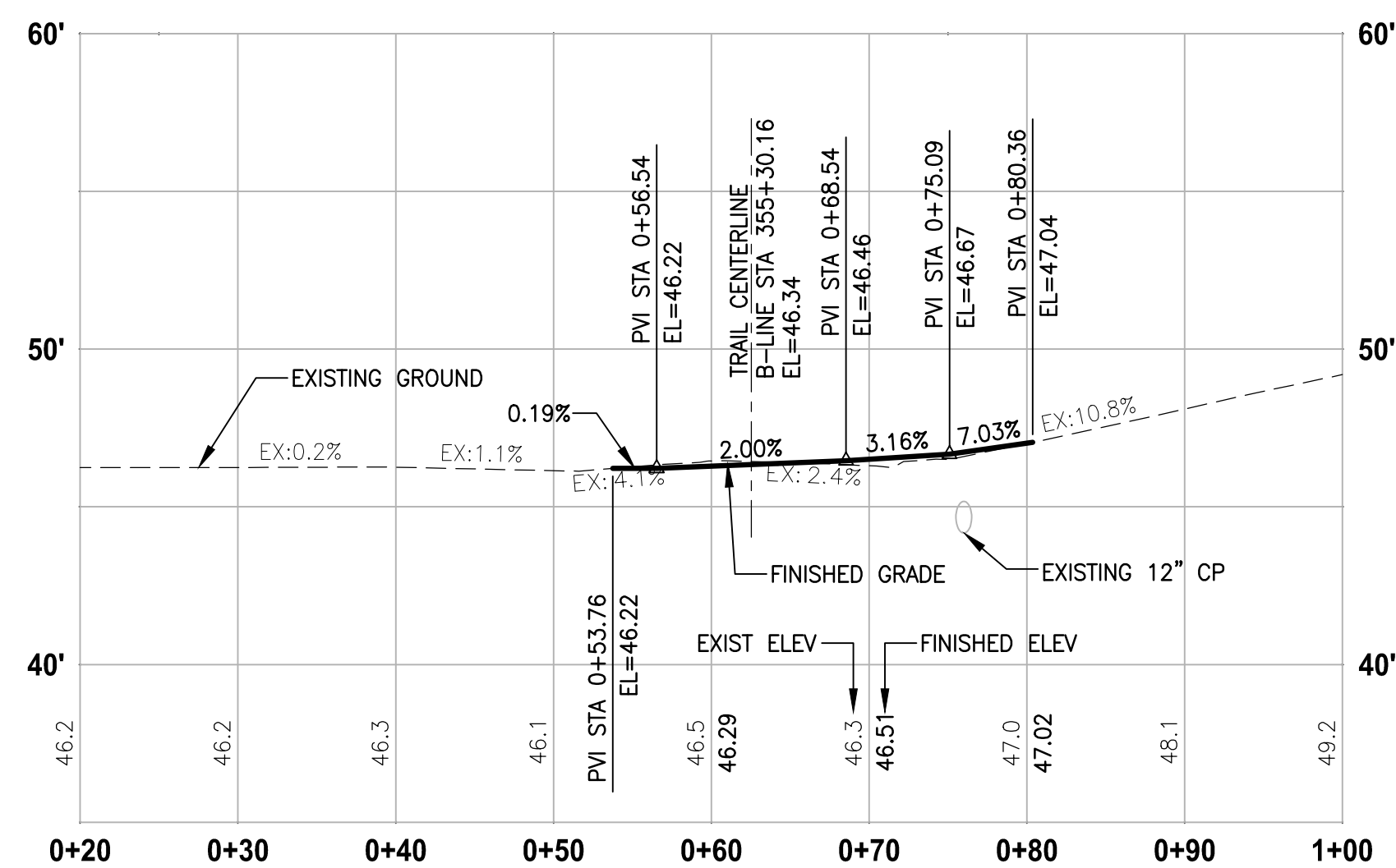
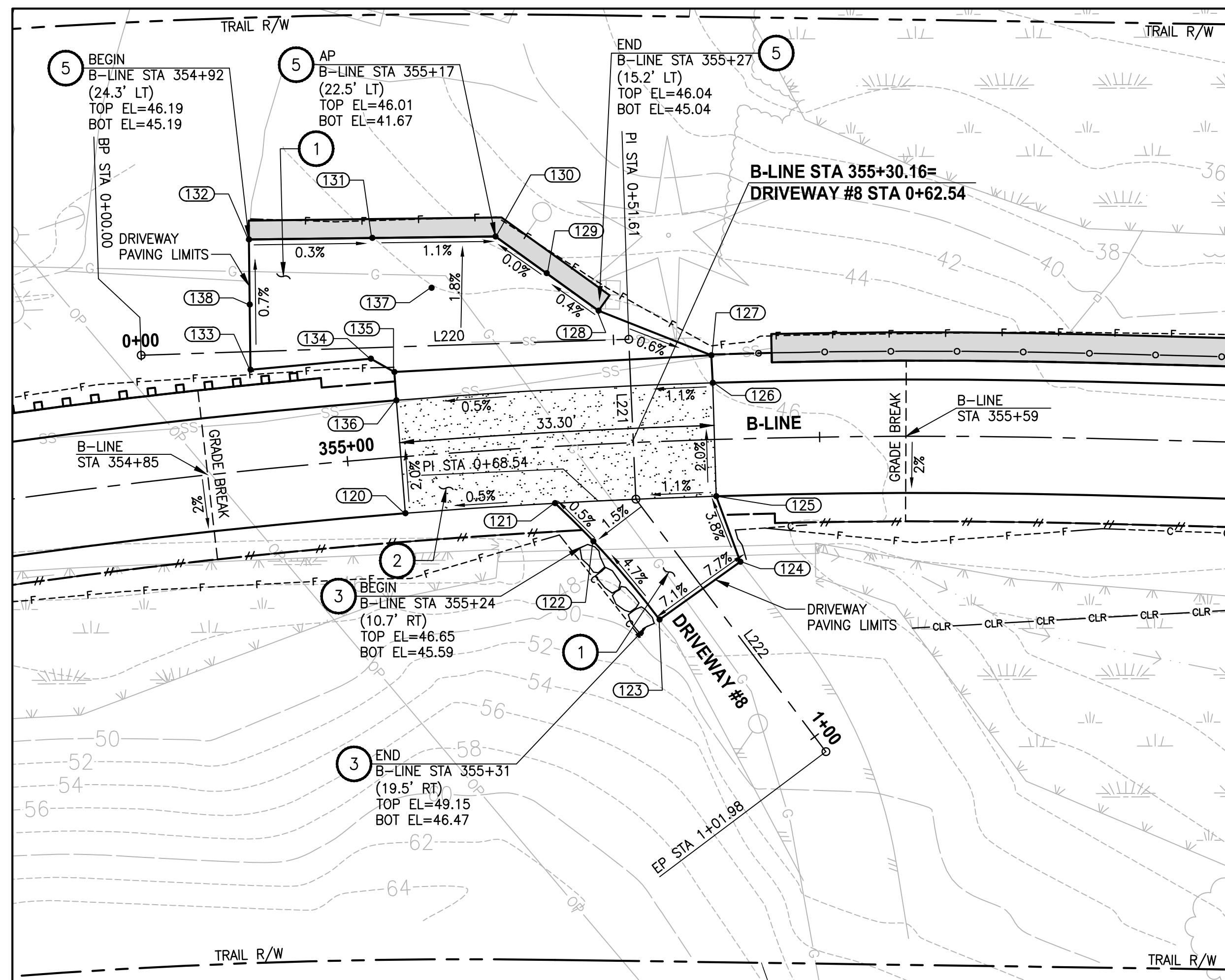
CITY OF SAMMAMISH PUBLIC WORKS DEVELOPMENT REVIEW
These drawings have been reviewed for compliance with City of Sammamish Clearing and Grading and Stormwater requirements and also in accordance with the requirements as established in the Settlement Agreement between King County vs. City of Sammamish No. C17-0921 JCC and King County vs. City of Sammamish No. 17-2-28922-7 SEA and have been deemed ACCEPTABLE. The reviewer accepts no responsibility for any errors and/or omissions made by the preparer of these drawings.
10 June 2021

PROJECT NAME
EAST LAKE SAMMAMISH
MASTER PLAN TRAIL
SOUTH SAMMAMISH SEGMENT B - PHASE 1
SAMMAMISH, WA

DRIVEWAY PLAN AND PROFILE

SHEET NO.
99 OF 190

DP6



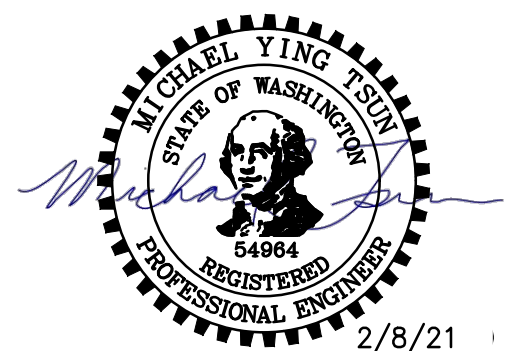
DRIVEWAY #8 POINT TABLE				
POINT #	B—LINE STATION	OFFSET	ELEVATION	DESCRIPTION
120	355+05.65	6.00' RT	46.54	CONC—ASPH
121	355+21.66	6.00' RT	46.56	CONC—ASPH
122	355+25.54	10.23' RT	46.59	GRADE BREAK
123	355+32.30	18.84' RT	47.47	ME—ASPH
124	355+41.25	13.02' RT	46.65	ME—ASPH
125	355+38.88	6.00' RT	46.43	CONC—ASPH
126	355+38.88	6.00' LT	46.26	CONC—ASPH
127	355+38.82	8.92' LT	46.01	AP—ASPH
128	355+27.28	14.11' LT	46.03	AP—ASPH
129	355+22.12	18.34' LT	46.00	ARC PT
130	355+17.10	22.55' LT	46.00	MIDPOINT
131	355+04.49	23.32' LT	46.14	ARC PC
132	354+91.92	24.32' LT	46.18	ME—ASPH
133	354+90.75	10.60' LT	46.29	ME—ASPH
134	355+03.35	10.60' LT	46.30	AP—ASPH
135	355+05.68	9.00' LT	46.32	ASPH
136	355+05.65	6.00' LT	46.41	CONC—ASPH
137	355+10.18	17.58' LT	46.14	ASPH
138	354+91.34	17.46' LT	46.10	ME—ASPH

DRIVEWAY #8 LINE TABLE						
LINE	LENGTH	BEARING	BEGIN EASTING	BEGIN NORTHING	END EASTING	END NORTHING
L220	51.61	N53° 33' 41"E	1331712.38	219699.13	1331753.89	219729.78
L221	16.93	S37° 08' 09"E	1331753.89	219729.78	1331764.12	219716.28
L222	33.44	S71° 31' 03"E	1331764.12	219716.28	1331795.83	219705.68

CONSTRUCTION NOTES:

LEGEND:

CONFORMED DRAWING



Parametrix
ENGINEERING . PLANNING . ENVIRONMENTAL SCIENCES

PROJECT NAME

**EAST LAKE SAMMAMISH
MASTER PLAN TRAIL
SOUTH SAMMAMISH SEGMENT B - PHASE 1**

SAMMAMISH, WA

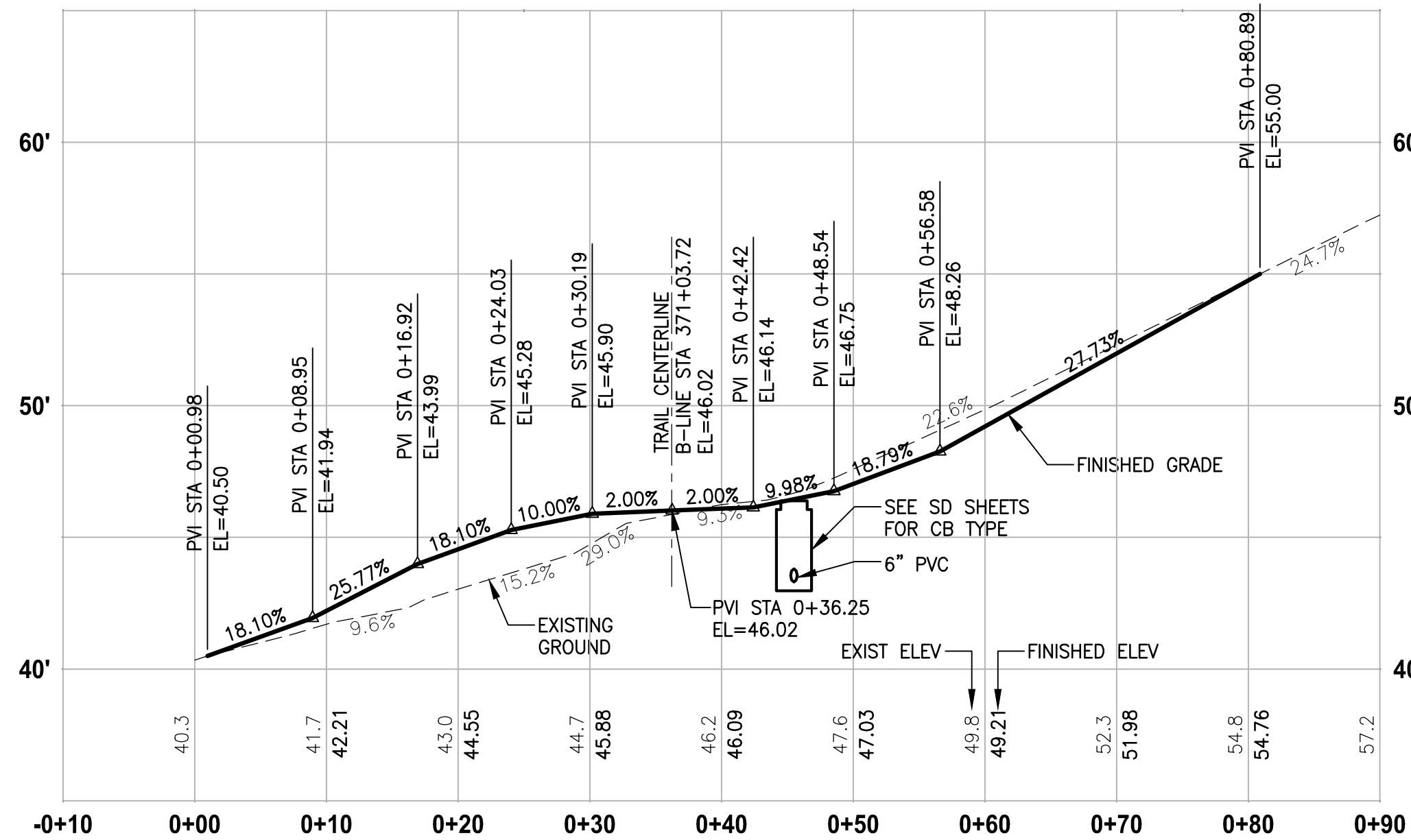
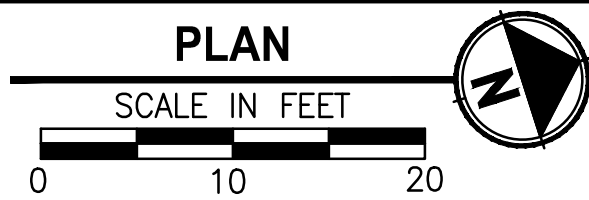
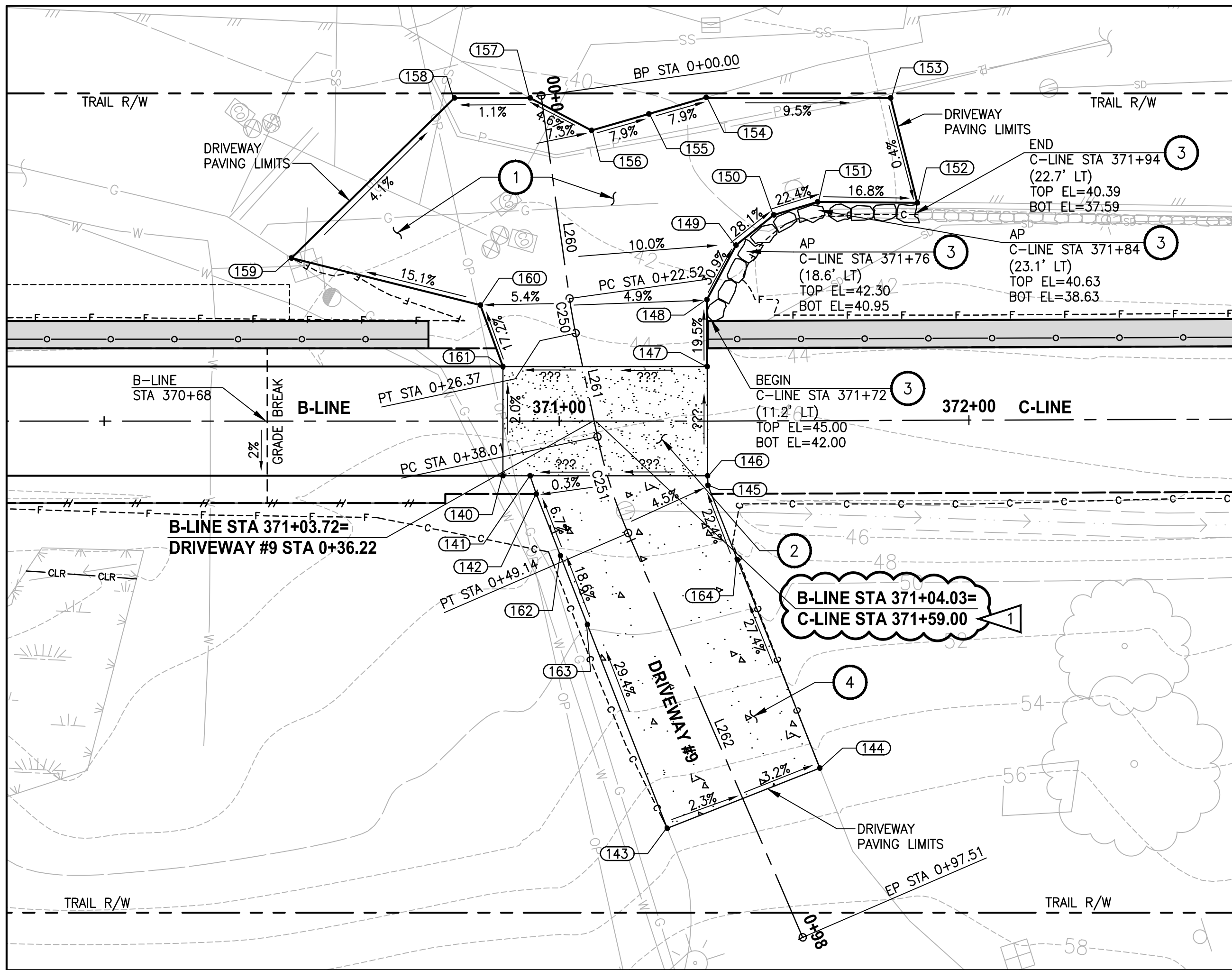
DRIVEWAY PLAN AND PROFILE

SHEET NO.
100 OF 190

DP7

City of Sammamish Page 101 of 191

PATH: U:\PSO\Projects\Clients\1521-075-ELST\99Sves\CADD\Phase 19\T03 Civil\Wdg-Phase1\ PLOTTED BY: tsunmic DATE: Tuesday, February 9, 2021 9:33:37 AM LAYOUT: DP8



DRIVEWAY #9 (SHEET AL19)

HORIZ: 1"=10'
VERT: 1"=5'

CONFORMED DRAWING



REVISIONS	DATE	BY	DESIGNED
1	ADDENDUM #1	2/8/21	MT
			M. TSUN
			B. PURGANAN
			Y. HO
			J. BAILEY

ONE INCH AT FULL SCALE. IF NOT, SCALE ACCORDINGLY
FILE NAME BL1521075P19T03DP-02
JOB No. 5521-1521-075 P19 T03
DATE NOVEMBER 2020

DRIVEWAY #9 POINT TABLE				
POINT #	B-LINE STATION	OFFSET	ELEVATION	DESCRIPTION
140	370+93.82	6.00' RT	46.11	CONC-ASPH
141	370+96.82	6.00' RT	46.12	CONC-ASPH
142	370+97.50	8.00' RT	46.26	AP
156	371+03.56	31.93' LT	40.79	ME-AP
157	370+96.82	35.50' LT	40.42	ME-ASPH
158	370+88.49	35.50' LT	40.32	ME-ASPH
159	370+70.60	17.91' LT	41.35	ME-ASPH
160	370+91.35	12.75' LT	44.57	AP-ASPH
161	370+93.82	6.00' LT	45.88	CONC-ASPH
162	371+00.14	14.78' RT	46.75	GRADE BREAK
163	371+03.10	22.35' RT	48.26	GRADE BREAK

DRIVEWAY #9 POINT TABLE				
POINT #	C-LINE STATION	OFFSET	ELEVATION	DESCRIPTION
143	371+66.84	44.73' RT	55.29	ME-ASPH
144	371+83.47	38.17' RT	54.71	ME-ASPH
145	371+71.32	7.07' RT	46.25	AP
146	371+71.28	6.00' RT	46.17	CONC-ASPH
147	371+71.24	6.00' LT	45.93	CONC-ASPH
148	371+71.21	13.34' LT	44.40	AP-GRADE BREAK
149	371+74.47	19.33' LT	42.30	AP-GRADE BREAK
150	371+78.65	22.63' LT	40.80	AP-GRADE BREAK
151	371+83.45	24.03' LT	39.63	AP-GRADE BREAK
152	371+94.42	23.89' LT	37.76	ME-ASPH
153	371+91.52	35.43' LT	37.84	ME-ASPH
154	371+71.13	35.56' LT	39.75	ME-ASPH
155	371+64.83	33.75' LT	40.27	ME-MIDPOINT
164	371+74.50	15.24' RT	48.10	GRADE BREAK

DRIVEWAY #9 LINE TABLE						
LINE	LENGTH	BEARING	BEGIN EASTING	BEGIN NORTHING	END EASTING	END NORTHING
L260	22.52	S80° 13' 17"E	1332607.32	220965.44	1332629.51	220961.61
L261	11.64	S84° 10' 56"E	1332633.33	220961.09	1332644.91	220959.91
L262	48.37	N84° 23' 01"E	1332656.01	220959.89	1332704.15	220964.62

DRIVEWAY #9 CURVE TABLE						
CURVE	LENGTH	RADIUS	DELTA	BEGIN EASTING	BEGIN NORTHING	END EASTING
C250	3.85	55.75	3°57'39"	1332629.51	220961.61	1332633.33
C251	11.13	55.75	11°26'03"	1332644.91	220959.91	1332656.01

CONSTRUCTION NOTES:

- 1 HMA DRIVEWAY PAVEMENT SECTION SHALL BE 4" HMA CL 1/2 PG 64-22 OVER 8" CRUSHED SURFACING BASE COURSE.
- 2 PATTERNED CONCRETE INTERSECTION, SEE 1 MD4
- 3 ROCK WALL, SEE 1 MD1
- 4 CONCRETE DRIVEWAY APPROACH, SEE 7 MD4

LEGEND:

- PATTERNED CONCRETE DRIVEWAY
- CONCRETE DRIVEWAY APPROACH
- HMA
- GRAVEL DRIVEWAY

CITY OF SAMMAMISH APPROVAL

PLANNING DEPT. APPROVAL
BY: ABaty
DATE: 06/10/2021
Community Development
CITY OF SAMMAMISH PUBLIC WORKS
DEVELOPMENT REVIEW
These drawings have been reviewed for compliance with City of Sammamish Clearing and Grading and Stormwater requirements and also in accordance with the requirements as established in the Settlement Agreement between King County vs. City of Sammamish No. C17-0921 JCC and King County vs. City of Sammamish No. 17-2-28922-7 SEA and have been deemed ACCEPTABLE. The reviewer accepts no responsibility for any errors and/or omissions made by the preparer of these drawings.
10 June 2021

PROJECT NAME
EAST LAKE SAMMAMISH
MASTER PLAN TRAIL
SOUTH SAMMAMISH SEGMENT B - PHASE 1
SAMMAMISH, WA

DRIVEWAY PLAN AND PROFILE

SHEET NO.
101 OF 190

DP8